

# V&V Reference Report

## L2 ASCDS Version : 7.6.8.1

Observation 4423 - L2 Version 001  
Chandra X-Ray Center

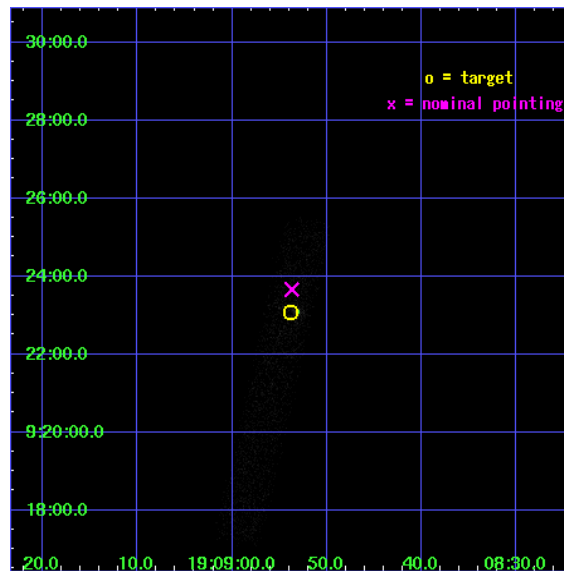
L2 Processing Date : Aug 4 2006

## Contents

<b>1</b>	<b>Front</b>	<b>2</b>
<b>2</b>	<b>OBI</b>	<b>3</b>
2.1	OBI . . . . .	3
2.1.1	Images . . . . .	3
2.1.2	Bias . . . . .	3
2.1.3	Parameters . . . . .	4
2.1.4	Events . . . . .	4
2.2	Compared Parameters . . . . .	5
2.3	Aspect . . . . .	6
2.4	Star Slots . . . . .	9
2.4.1	Slot 3 . . . . .	9
2.4.2	Slot 4 . . . . .	10
2.4.3	Slot 5 . . . . .	11
2.4.4	Slot 6 . . . . .	12
2.4.5	Slot 7 . . . . .	13
2.5	FID Slots . . . . .	14
2.5.1	Slot 0 . . . . .	14
2.5.2	Slot 1 . . . . .	15
2.5.3	Slot 2 . . . . .	16
<b>3</b>	<b>Point Sources</b>	<b>17</b>
<b>A</b>	<b>Summary</b>	<b>18</b>
A.1	Status . . . . .	18
A.2	Comments . . . . .	18

# 1 Front

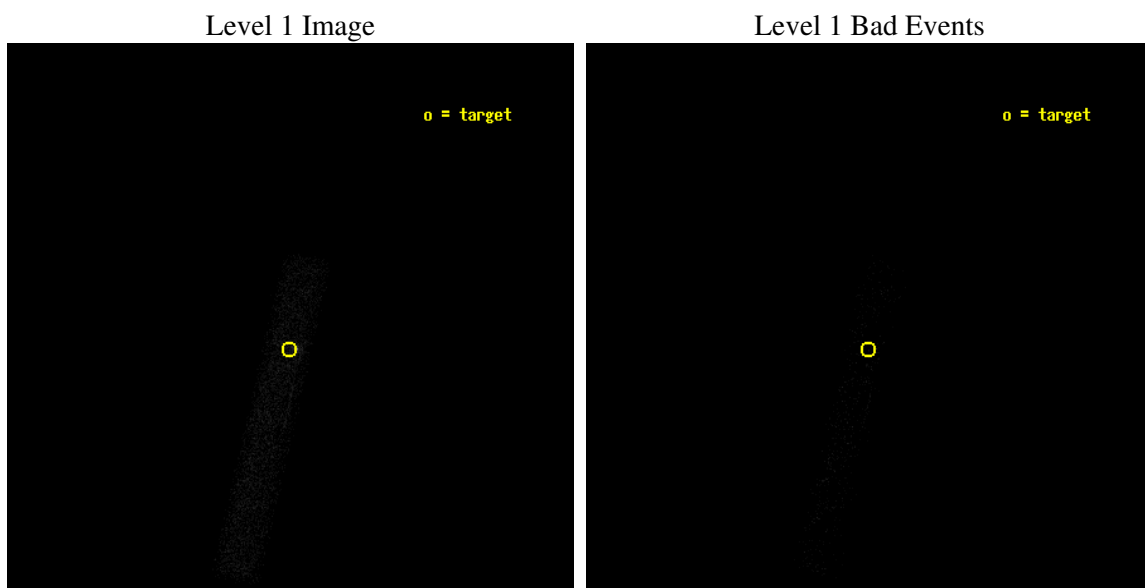
seq_num	400320
obs_id	4423
title	THE BHC SOFT X-RAY TRANSIENT XTE J1908+094 RETURNING TO QUIESCENCE
observer	Dr Peter Jonker
object	XTE J1908+094
dtcycle	0
cycle	P
ra_targ	287.224167
dec_targ	9.384694
ra_nom	287.22378554676
dec_nom	9.3942842687995
roll_nom	102.8475444863
revision	2
ontime	5150.8000767529
livetime	4671.5037880944
ontime7	5150.8000767529
l2events	5290



## 2 OBI

### 2.1 OBI

#### 2.1.1 Images



#### 2.1.2 Bias

Chip 7



### 2.1.3 Parameters

obi_num	1
ascdsver	7.6.8.1
caldbver	3.2.2
date	2006-08-04T21:37:11
revision	2

sched_exp_time	5000.000000
ontime	5998.9642136693
ontime7	5998.9642136693
l1events	9824

### 2.1.4 Events

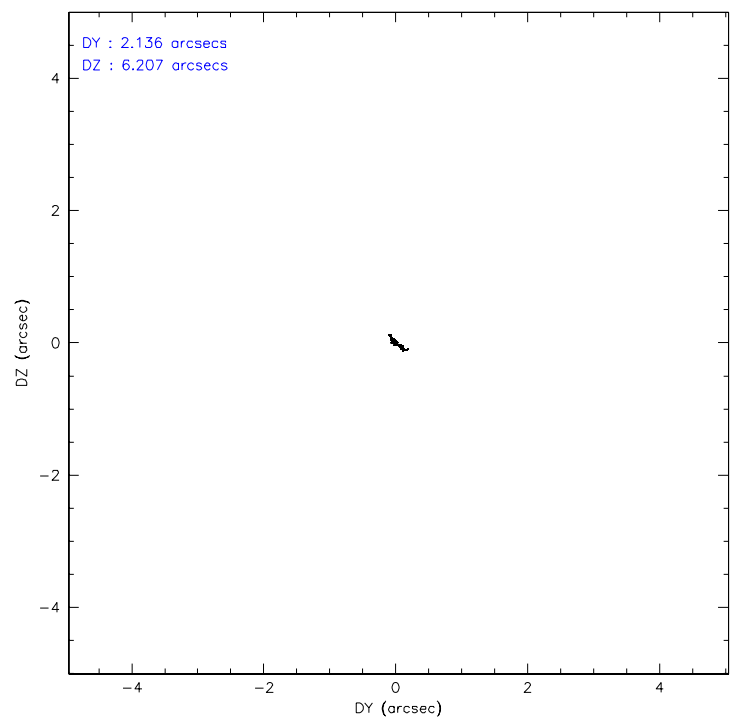
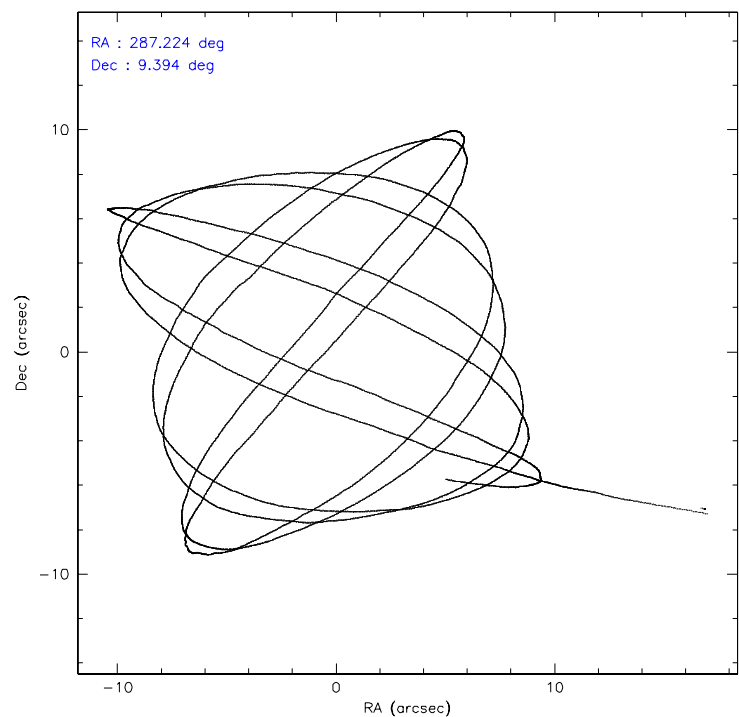
	<b>ccd 7</b>
level 1 events	9824
rejected events	4432
rejected %	45%

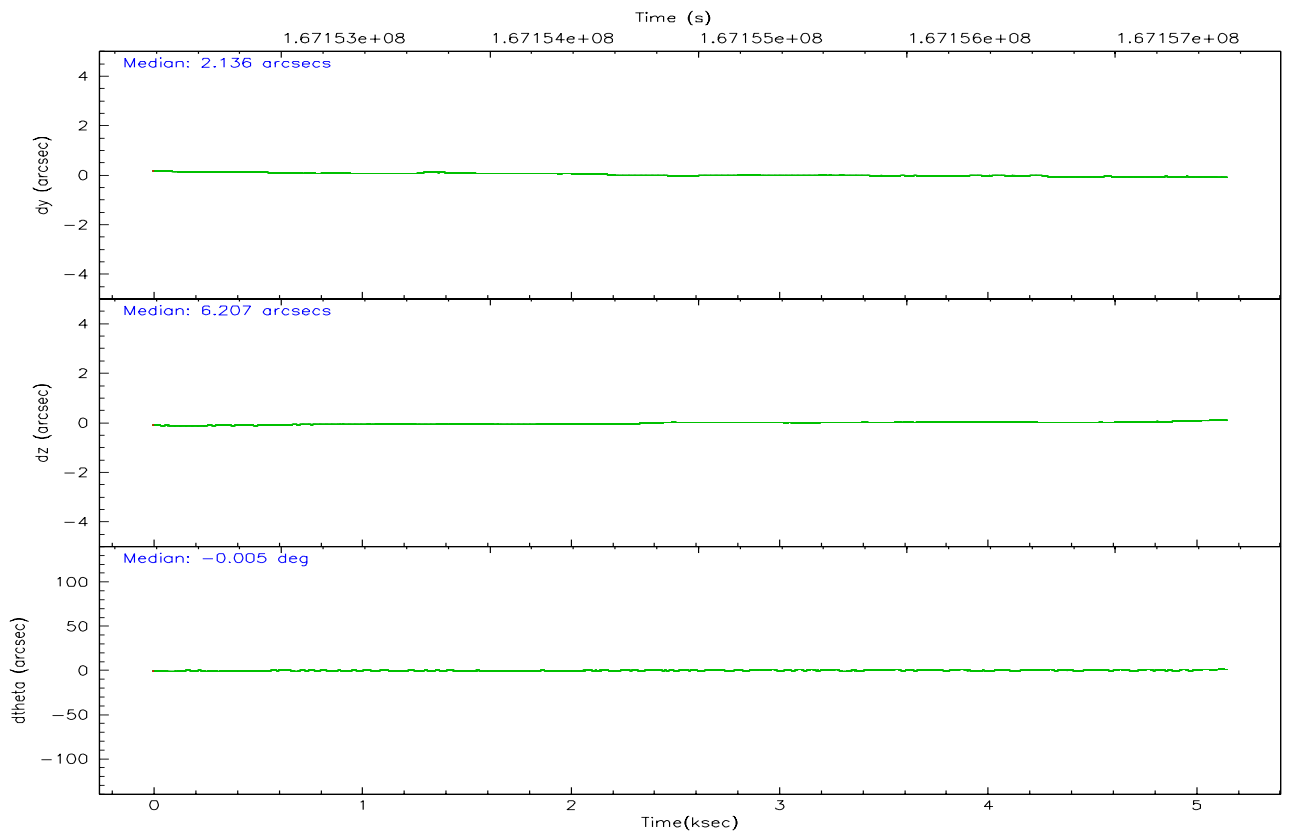
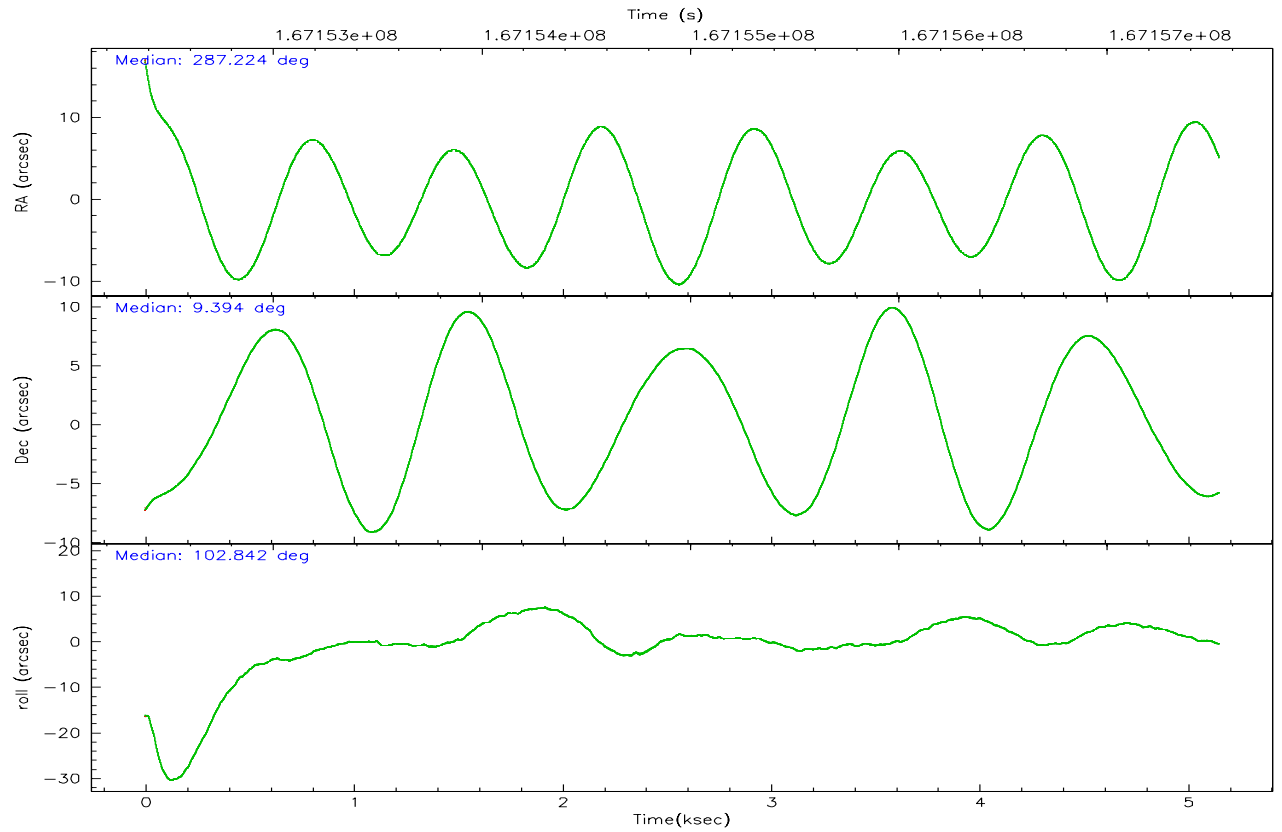
	<b>ccd 7</b>
grade 0 events	784
	7%
grade 1 events	26
	0%
grade 2 events	1343
	13%
grade 3 events	653
	6%
grade 4 events	566
	5%
grade 5 events	520
	5%
grade 6 events	2486
	25%
grade 7 events	3446
	35%

## 2.2 Compared Parameters

Parameter	Planned	Actual	Parameter	Planned	Actual
Instrument	ACIS	ACIS	Obspar format version number	6	6
Detector	ACIS-7	ACIS-7	Obspar file type	PREDICTED	ACTUAL
Grating	NONE	NONE	Obspar update status	NONE	UPDATED
Data mode	FAINT	FAINT	On-chip summing requested	N	N
Observation mode	POINTING	POINTING	Subarray requested	1/8	1/8
Pointing RA	287.242732	287.2237855467581	Subarray start row	0	449
Pointing Dec	9.374643	9.394284268799513	Subarray row count	1024	128
Pointing Roll	102.687791	102.8475444862977	Alternating exposures requested	N	N
SIM focus pos (mm)	-0.684267	-0.6828225247311905	Primary exposure time	0.000000	0.4
SIM defocus (mm)	0	0.001444936568705701			
SIM translation stage pos (mm)	-190.132523	-190.1425803651734			
SIM translation stage offset (mm)	0	0.01005778216563158			
Observation start time	167152531.184000	167151500.92429			
Observation start date	2003-04-19T15:14:27	2003-04-19T14:58:20			
Observation end time	167157531.184000	167158051.18707			
Observation end date	2003-04-19T16:37:47	2003-04-19T16:47:31			
Read mode	TIMED	TIMED			

### 2.3 Aspect





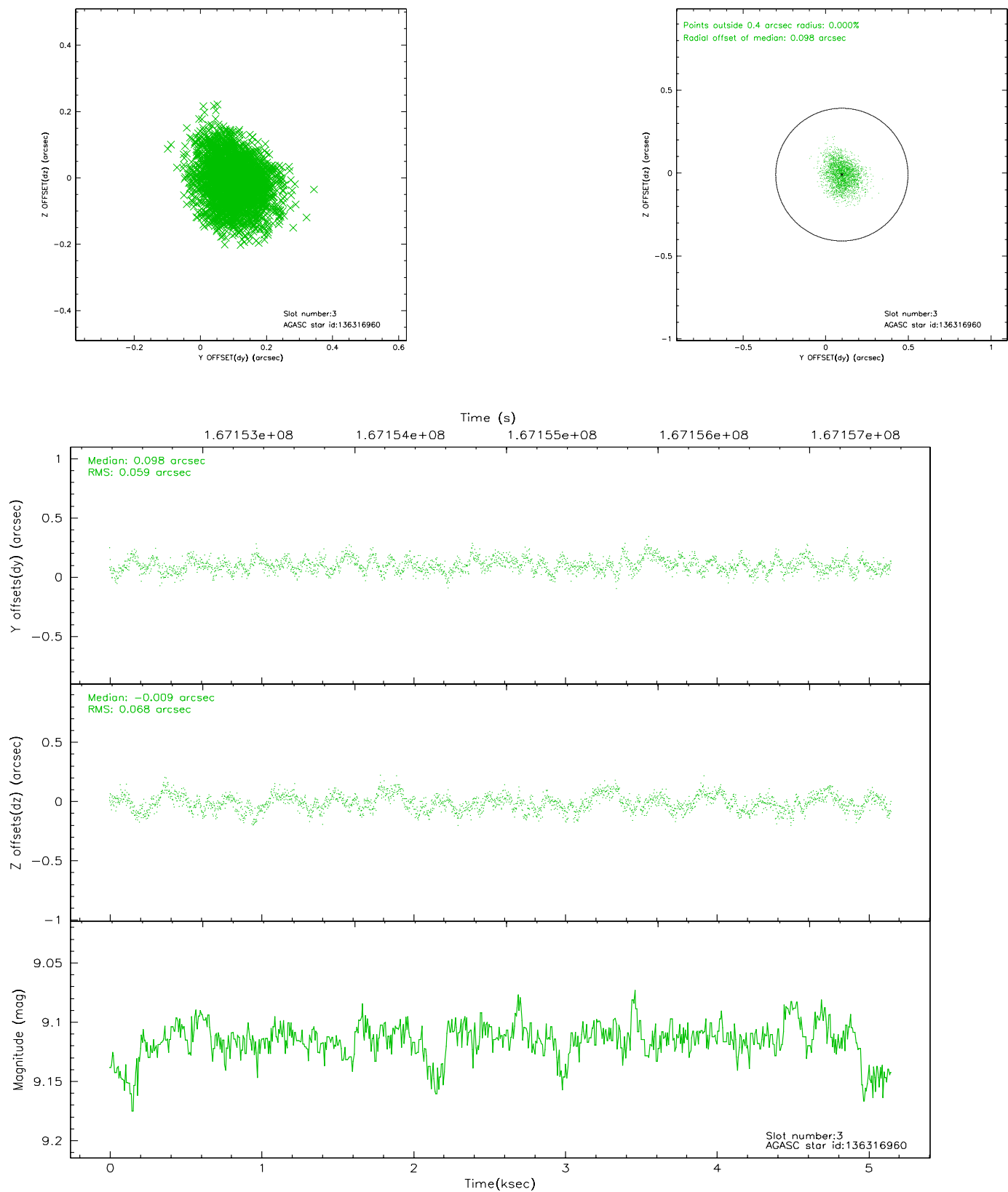
### Slot Statistics

slot	status	id	mag	n_pts	med_dy	med_dz	dr1	dr2	ra	dec	mean_y	mean_z
0	FID	ACIS-S-2	7.12	1257	-0.043	0.021	0.006	0.010	0.000000	0.000000	-754.78	-1727.28
1	FID	ACIS-S-4	7.21	1257	-0.034	0.015	0.005	0.009	0.000000	0.000000	2157.93	180.05
2	FID	ACIS-S-5	7.24	1257	0.046	-0.027	0.006	0.010	0.000000	0.000000	-1806.06	174.92
3	GUIDE	136316960	9.11	2506	0.098	-0.009	0.097	0.154	287.104881	9.133555	-738.48	669.02
4	GUIDE	136317344	9.25	2510	0.180	-0.028	0.091	0.148	287.032148	8.921467	-1426.63	1089.50
5	GUIDE	136450552	9.24	2512	0.127	0.192	0.088	0.148	287.756963	9.197020	-1023.68	-1641.67
6	GUIDE	136979696	9.39	2514	-0.110	0.197	0.097	0.157	287.607746	9.703592	871.66	-1523.85
7	GUIDE	136844448	7.81	2513	-0.302	-0.354	0.070	0.109	286.569231	9.582775	1258.69	2167.01

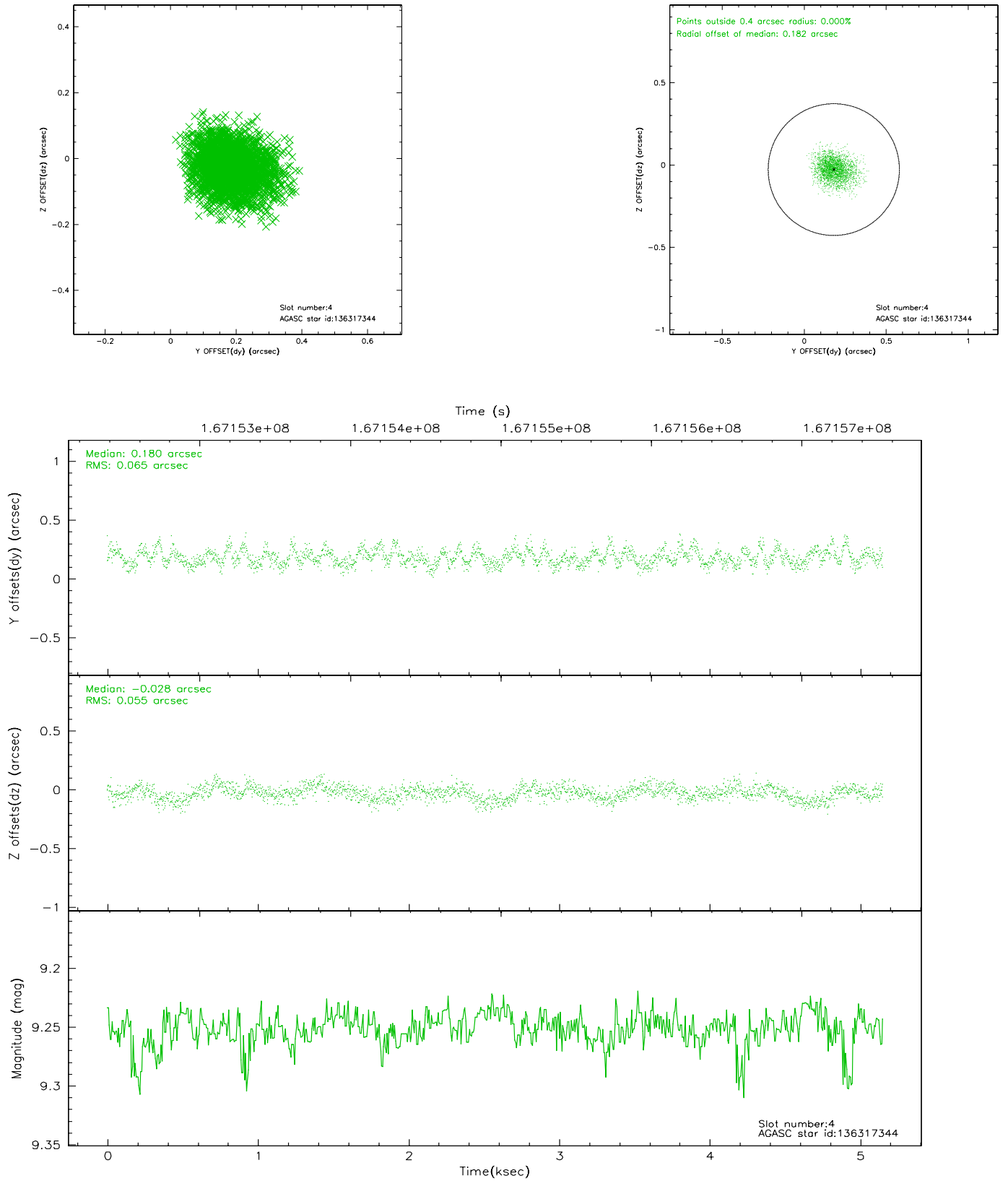


## 2.4 Star Slots

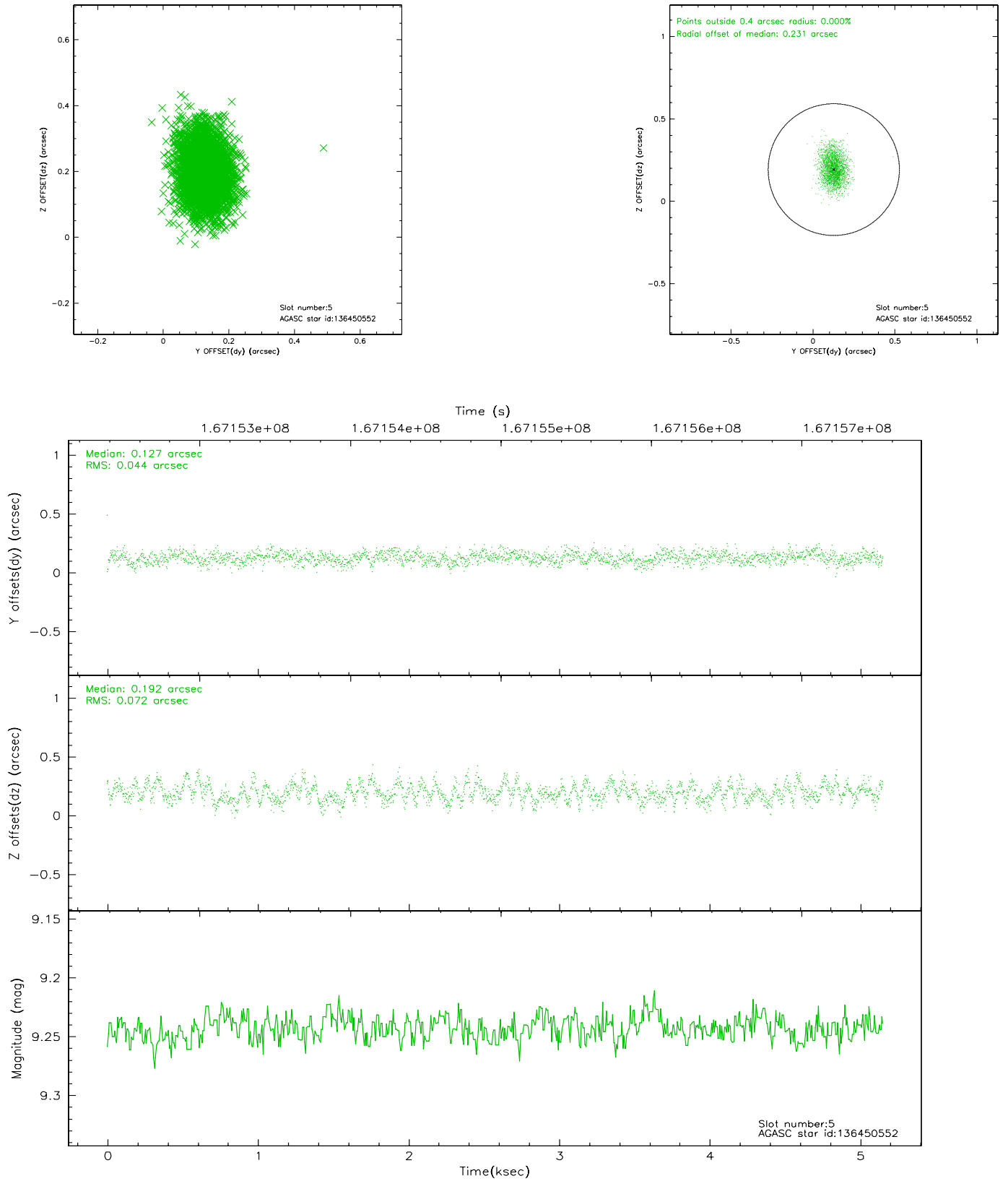
### 2.4.1 Slot 3



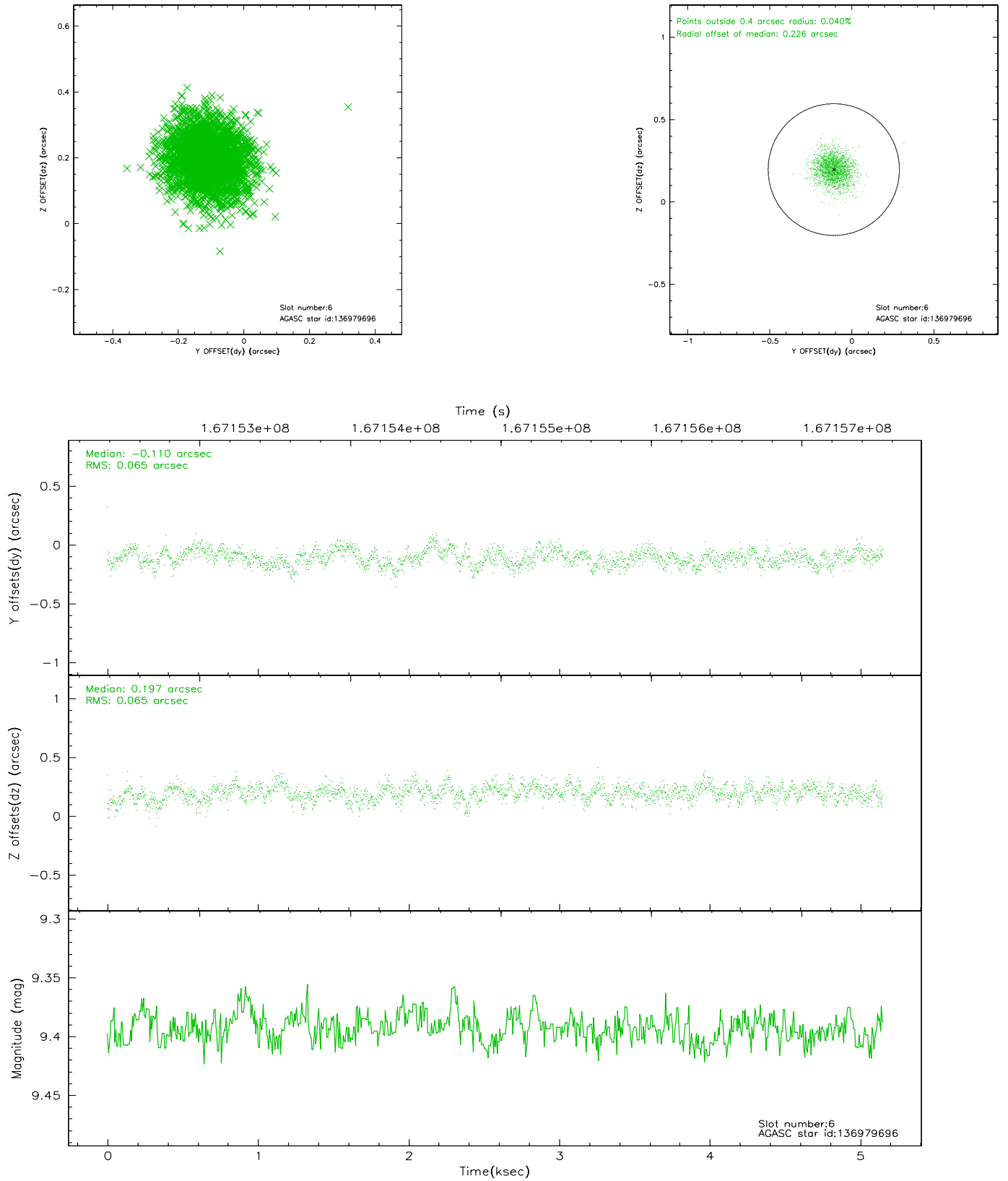
## 2.4.2 Slot 4



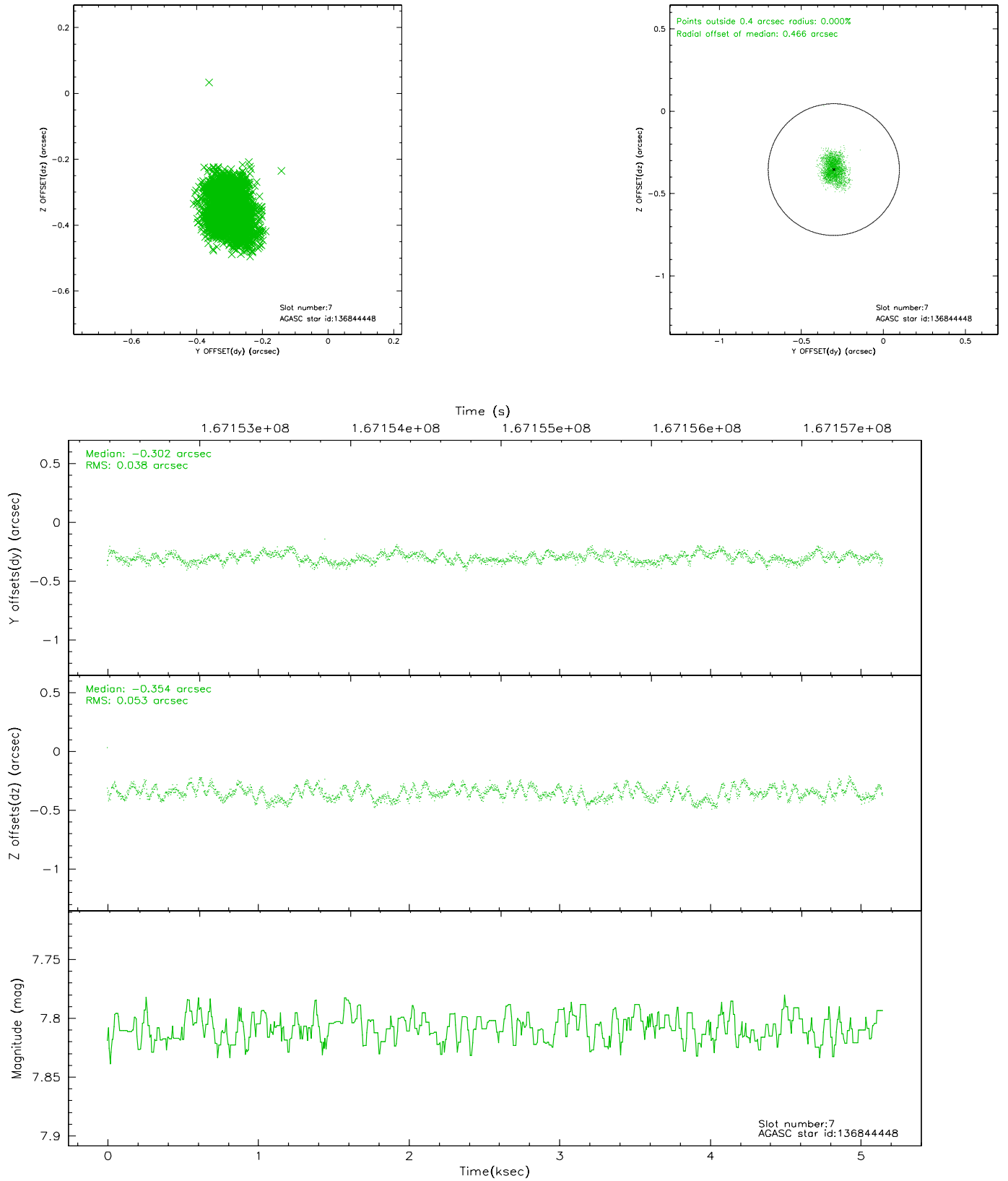
### 2.4.3 Slot 5



## 2.4.4 Slot 6

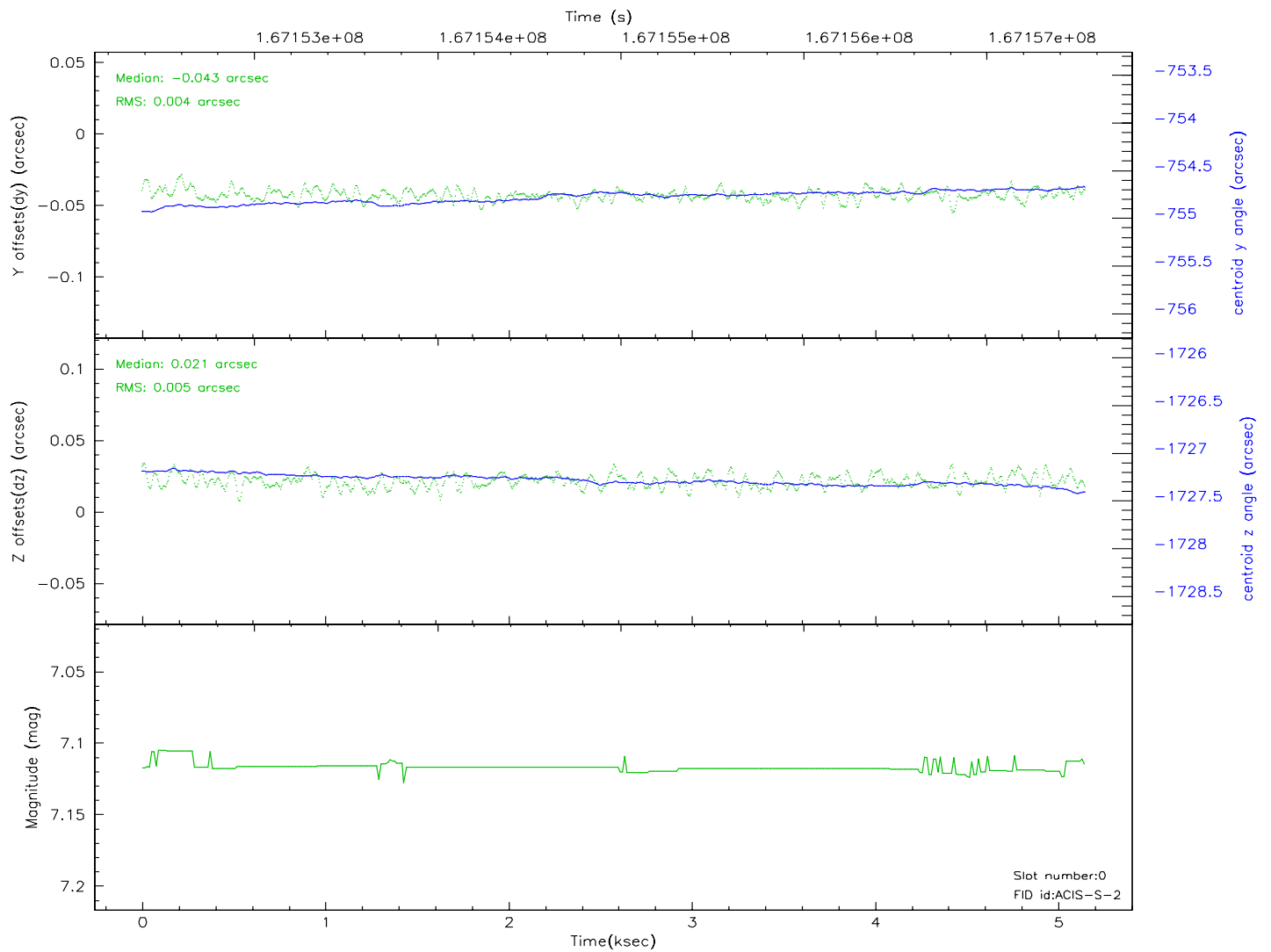
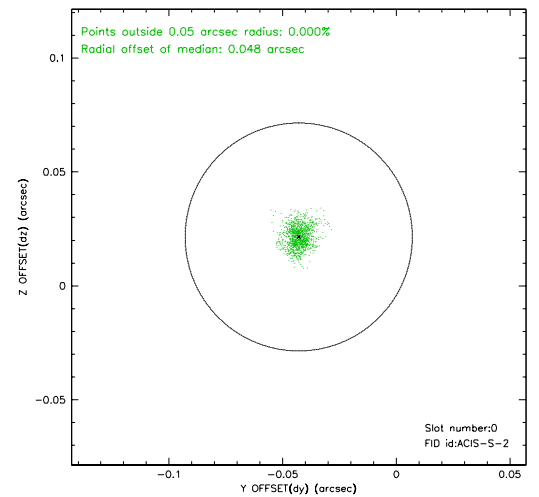
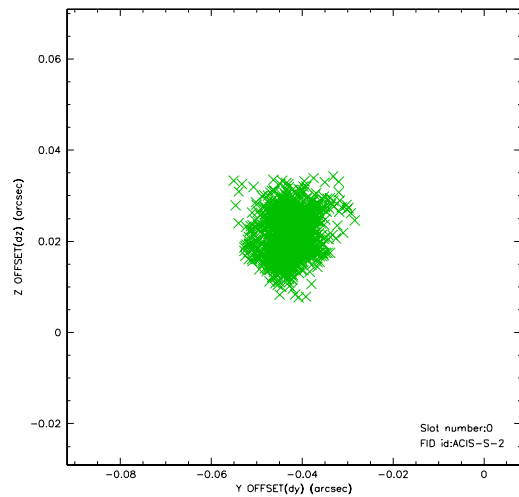


## 2.4.5 Slot 7

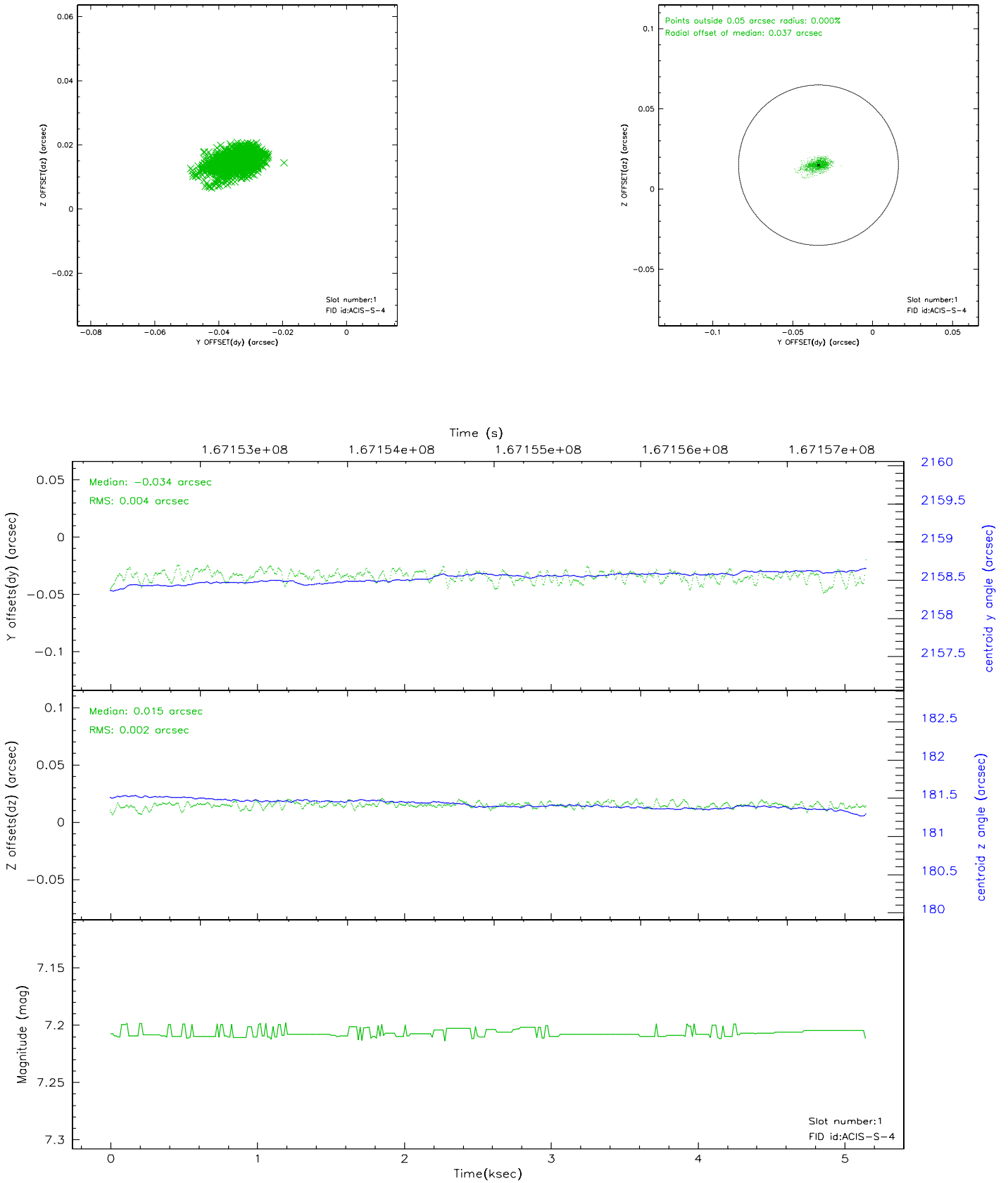


## 2.5 FID Slots

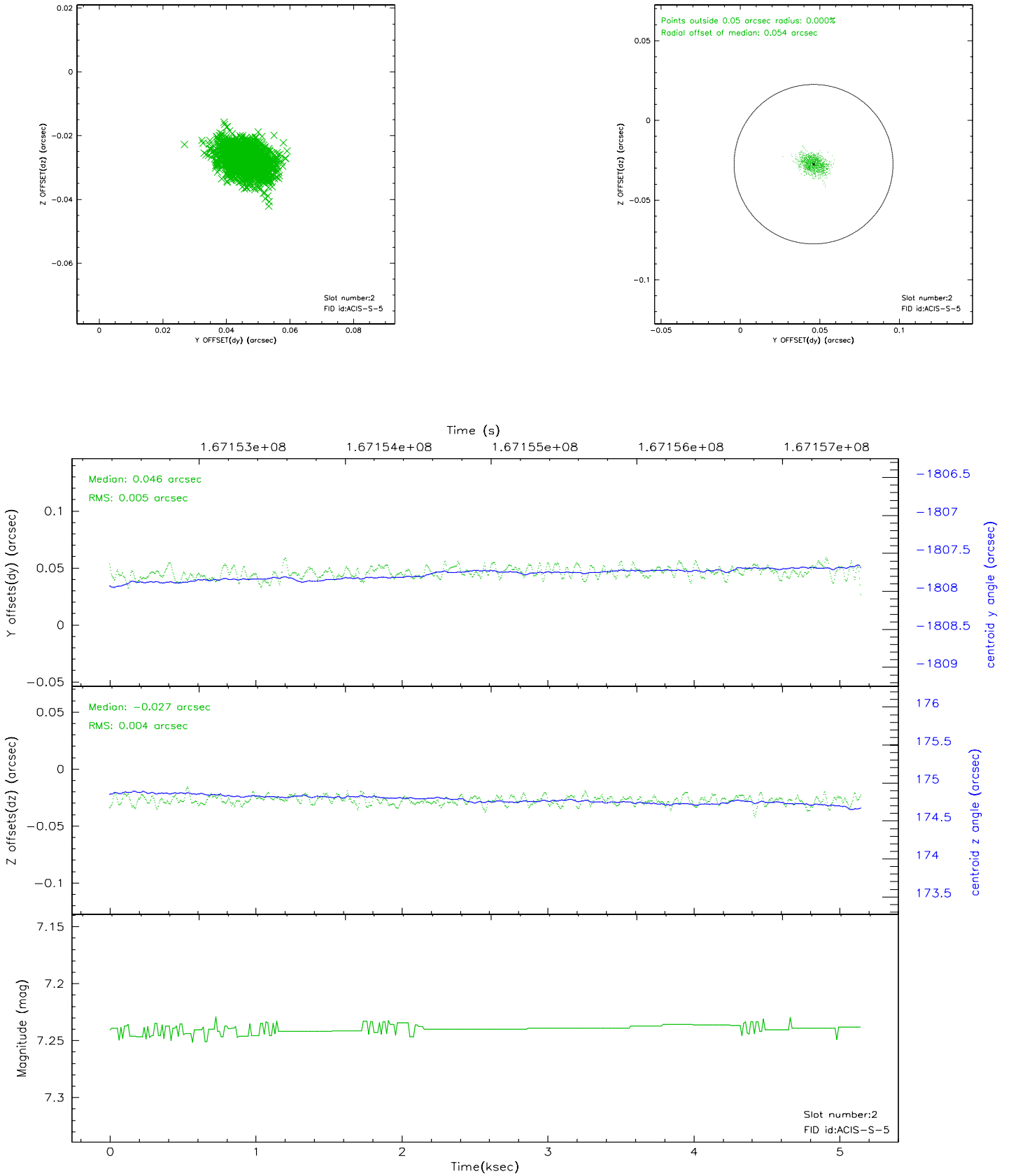
### 2.5.1 Slot 0



## 2.5.2 Slot 1



### 2.5.3 Slot 2





### 3 Point Sources

## A Summary

### A.1 Status

V&V Scientist	Beth Sundheim
V&V Date (YYYY-MM-DD)	2006.08.06
V&V Edition	1
V&V Disposition and Status	OK
V&V Charge Time	5.15

### A.2 Comments