

V&V Reference Report

L2 ASCDS Version : 7.6.9

Observation 4373 - L2 Version 001
Chandra X-Ray Center

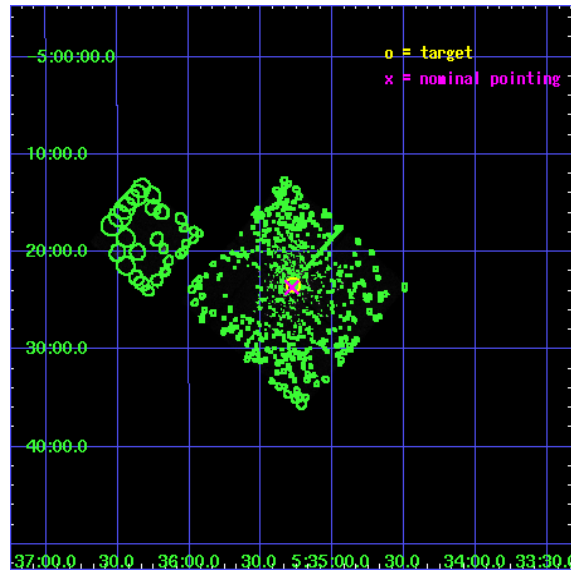
L2 Processing Date : Oct 19 2006

Contents

1	Front	2
2	OBI	3
2.1	OBI	3
2.1.1	Images	3
2.1.2	Bias	3
2.1.3	Parameters	4
2.1.4	Events	4
2.2	Compared Parameters	5
2.3	Aspect	6
2.4	Star Slots	9
2.4.1	Slot 3	9
2.4.2	Slot 4	10
2.4.3	Slot 5	11
2.4.4	Slot 6	12
2.4.5	Slot 7	13
2.5	FID Slots	14
2.5.1	Slot 0	14
2.5.2	Slot 1	15
2.5.3	Slot 2	16
3	Point Sources	17
A	Summary	18
A.1	Status	18
A.2	Comments	18

1 Front

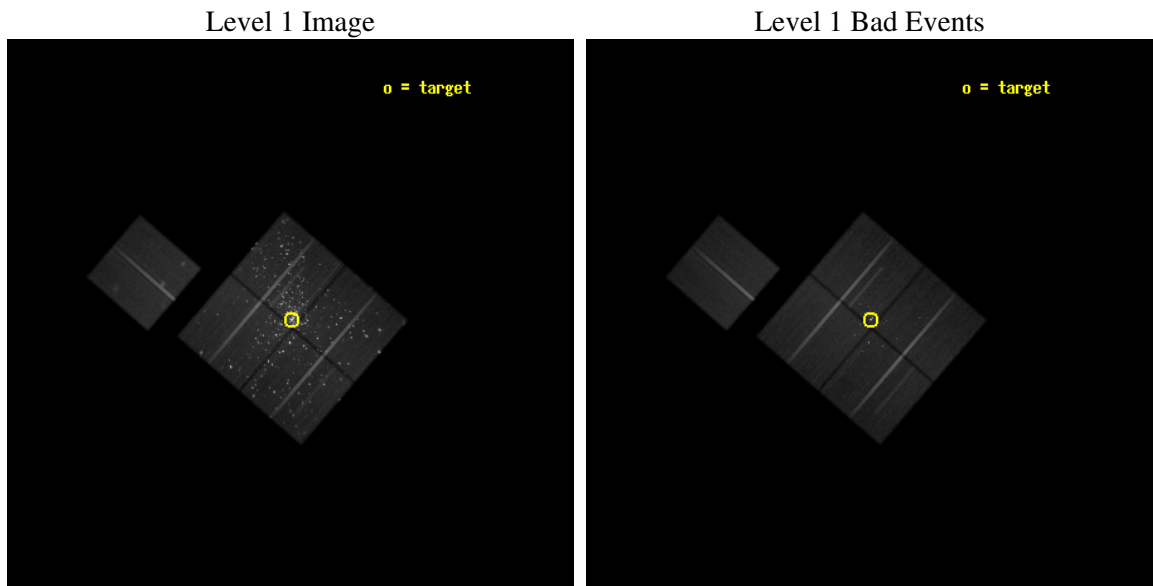
seq_num	200214
obs_id	4373
title	AN ULTRADEEP CHANDRA STUDY OF THE ORION NEBULA (GUEST OBSERVER PORTION)
observer	Prof. Eric Feigelson
object	ORION NEBULA CLUSTER
dtcycle	0
cycle	P
ra_targ	83.819583
dec_targ	-5.39
ra_nom	83.821009812145
dec_nom	-5.394402775937
roll_nom	310.90882385688
revision	2
ontime	173735.70284253
livetime	171465.71798253
ontime0	173751.40779343
ontime1	173729.42083225
ontime2	173748.26658428
ontime3	173735.70284253
ontime6	173757.68957475
l2events	1526785



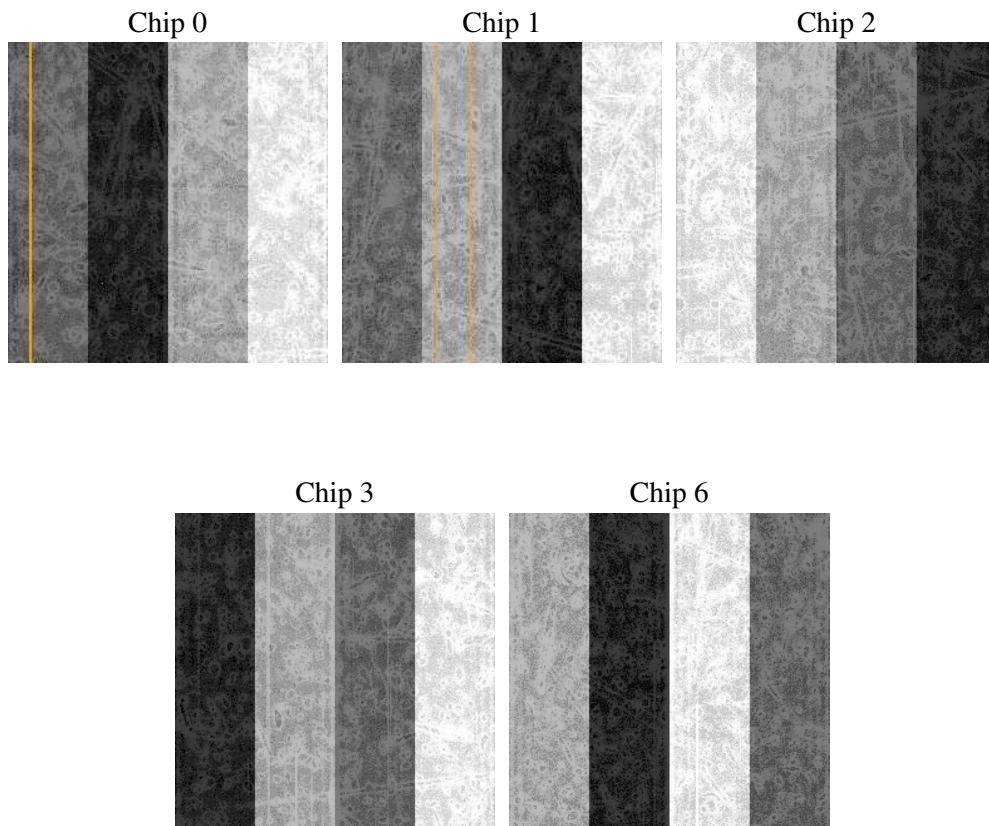
2 OBI

2.1 OBI

2.1.1 Images



2.1.2 Bias



2.1.3 Parameters

obi_num	0
ascdsver	7.6.9
caldbver	3.2.3
date	2006-10-19T08:15:45
revision	2

sched_exp_time	173670.873000
ontime	173738.6363481
ontime0	173754.34131894
ontime1	173732.35433781
ontime2	173751.20010978
ontime3	173738.6363481
ontime6	173760.62310025
l1events	5693331

2.1.4 Events

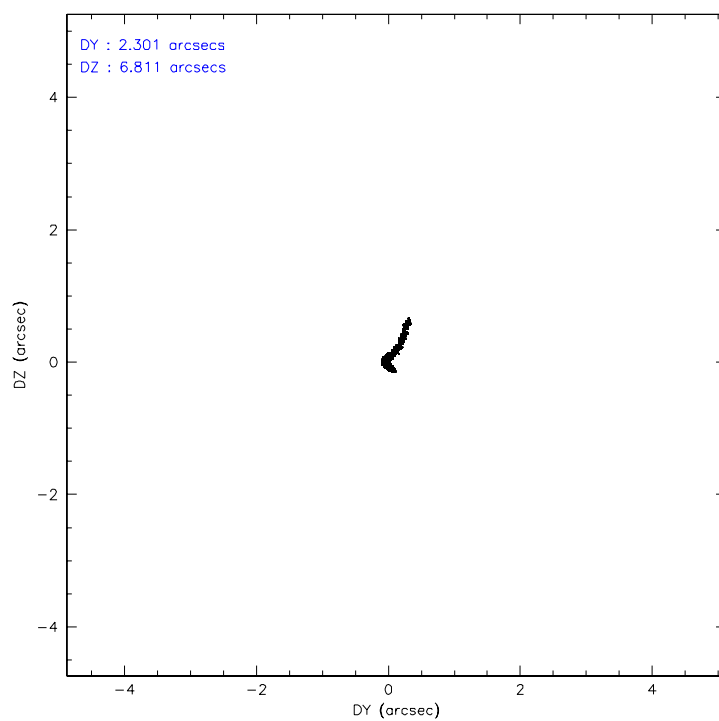
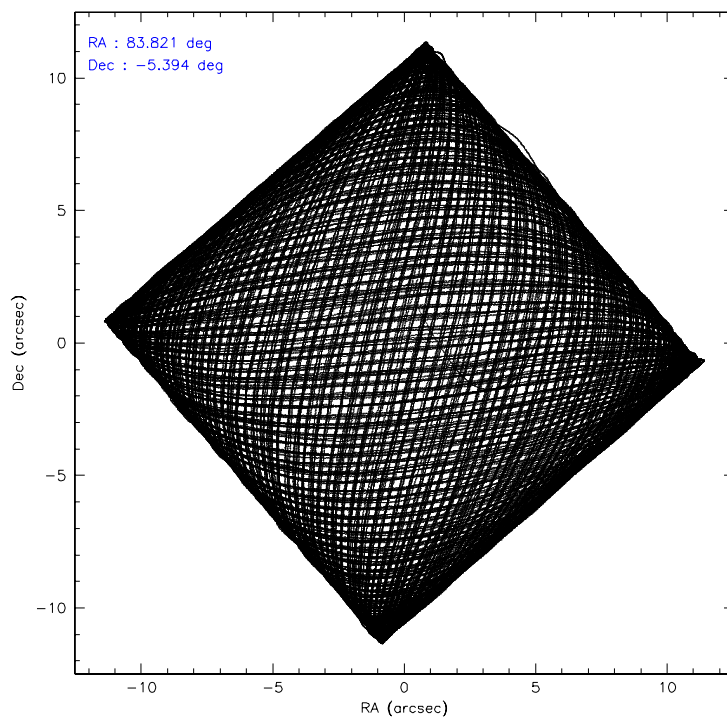
	ccd 0	ccd 1	ccd 2	ccd 3	ccd 6
level 1 events	1051792	1043117	1113361	1580205	904856
rejected events	753755	745488	871543	860391	800005
rejected %	71%	71%	78%	54%	88%

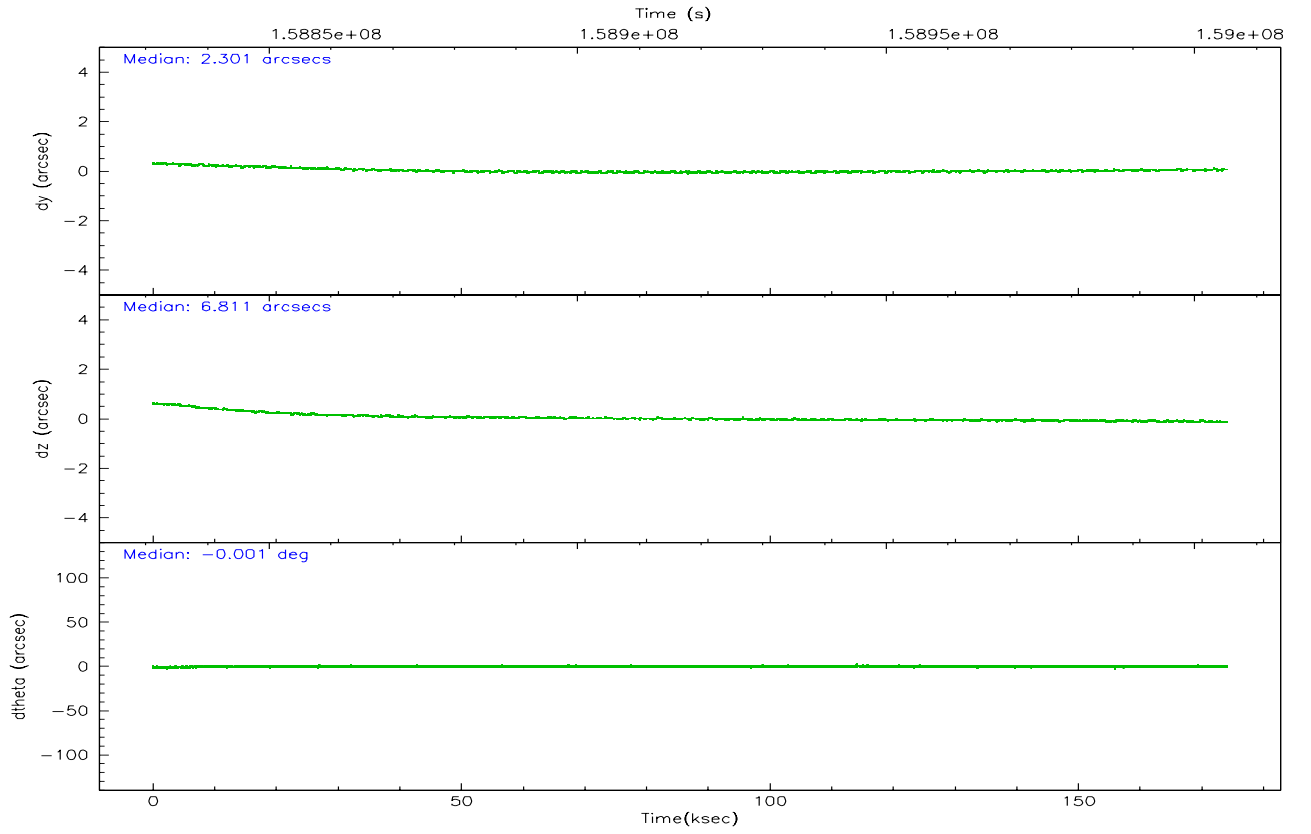
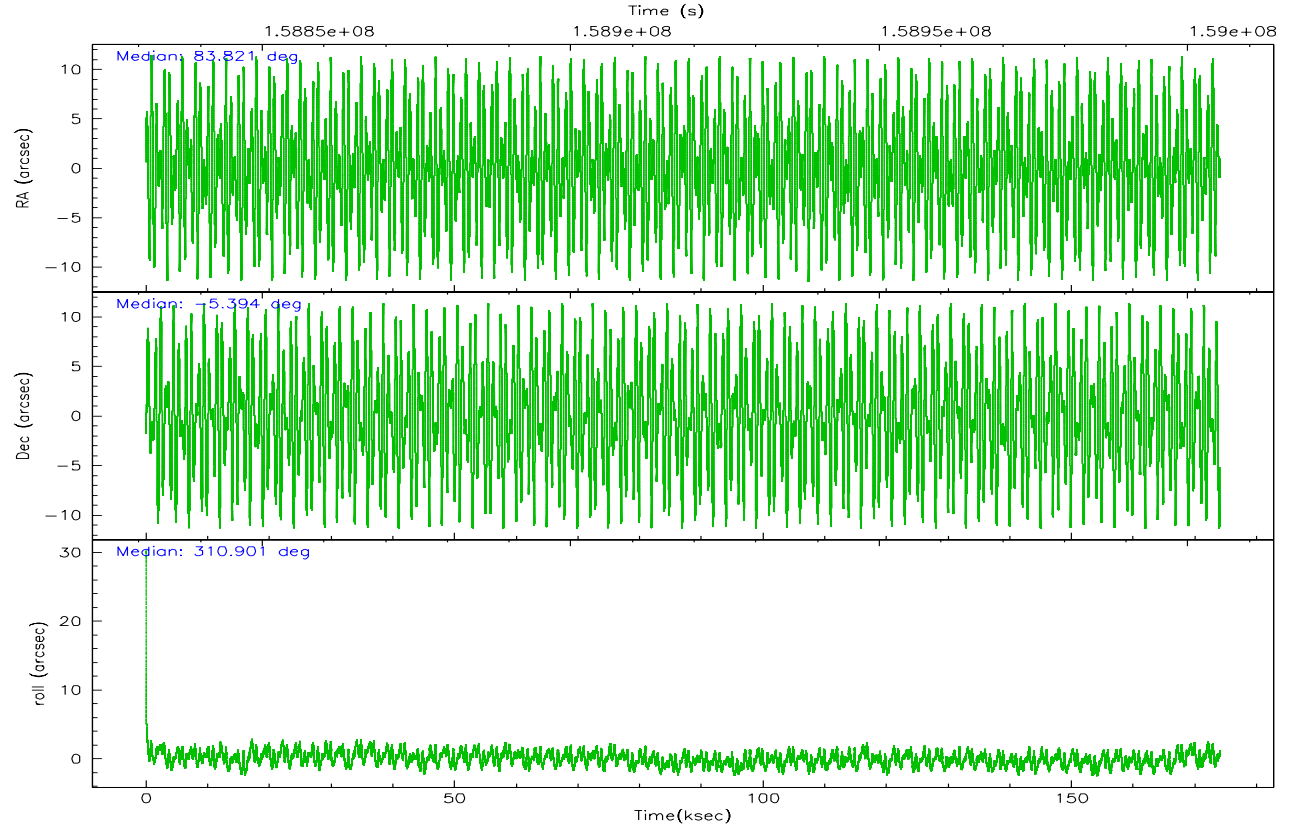
	ccd 0	ccd 1	ccd 2	ccd 3	ccd 6
grade 0 events	198546	202064	162636	518340	47354
	18%	19%	14%	32%	5%
grade 1 events	6047	2280	2167	21972	439
	0%	0%	0%	1%	0%
grade 2 events	42586	39345	34110	90933	19786
	4%	3%	3%	5%	2%
grade 3 events	17906	17242	13916	34813	10471
	1%	1%	1%	2%	1%
grade 4 events	17135	16826	13863	34321	10205
	1%	1%	1%	2%	1%
grade 5 events	28764	28197	24346	47457	28195
	2%	2%	2%	3%	3%
grade 6 events	21867	22158	17299	41425	17037
	2%	2%	1%	2%	1%
grade 7 events	718941	715005	845024	790944	771369
	68%	68%	75%	50%	85%

2.2 Compared Parameters

Parameter	Planned	Actual	Parameter	Planned	Actual
Instrument	ACIS	ACIS	Obspar format version number	6	6
Detector	ACIS-01236	ACIS-01236	Obspar file type	PREDICTED	ACTUAL
Grating	NONE	NONE	Obspar update status	NONE	UPDATED
Data mode	VFAINT	VFAINT	Number of optional ACIS chips dropped	0	0
Observation mode	POINTING	POINTING	On-chip summing requested	N	N
Pointing RA	83.794989	83.82100981214506	Subarray requested	NONE	NONE
Pointing Dec	-5.385556	-5.394402775937047	Alternating exposures requested	N	N
Pointing Roll	310.697693	310.9088238568823	Primary exposure time	0.000000	3.1
SIM focus pos (mm)	-0.782348	-0.7809083437167272			
SIM defocus (mm)	0	0.001439871863259334			
SIM translation stage pos (mm)	-233.592463	-233.5874344608287			
SIM translation stage offset (mm)	0	-0.005018542100998502			
Observation start time	158831584.184000	158830484.46177			
Observation start date	2003-01-13T07:52:00	2003-01-13T07:34:44			
Observation end time	159005255.184000	159005569.8441			
Observation end date	2003-01-15T08:06:31	2003-01-15T08:12:49			
Read mode	TIMED	TIMED			

2.3 Aspect



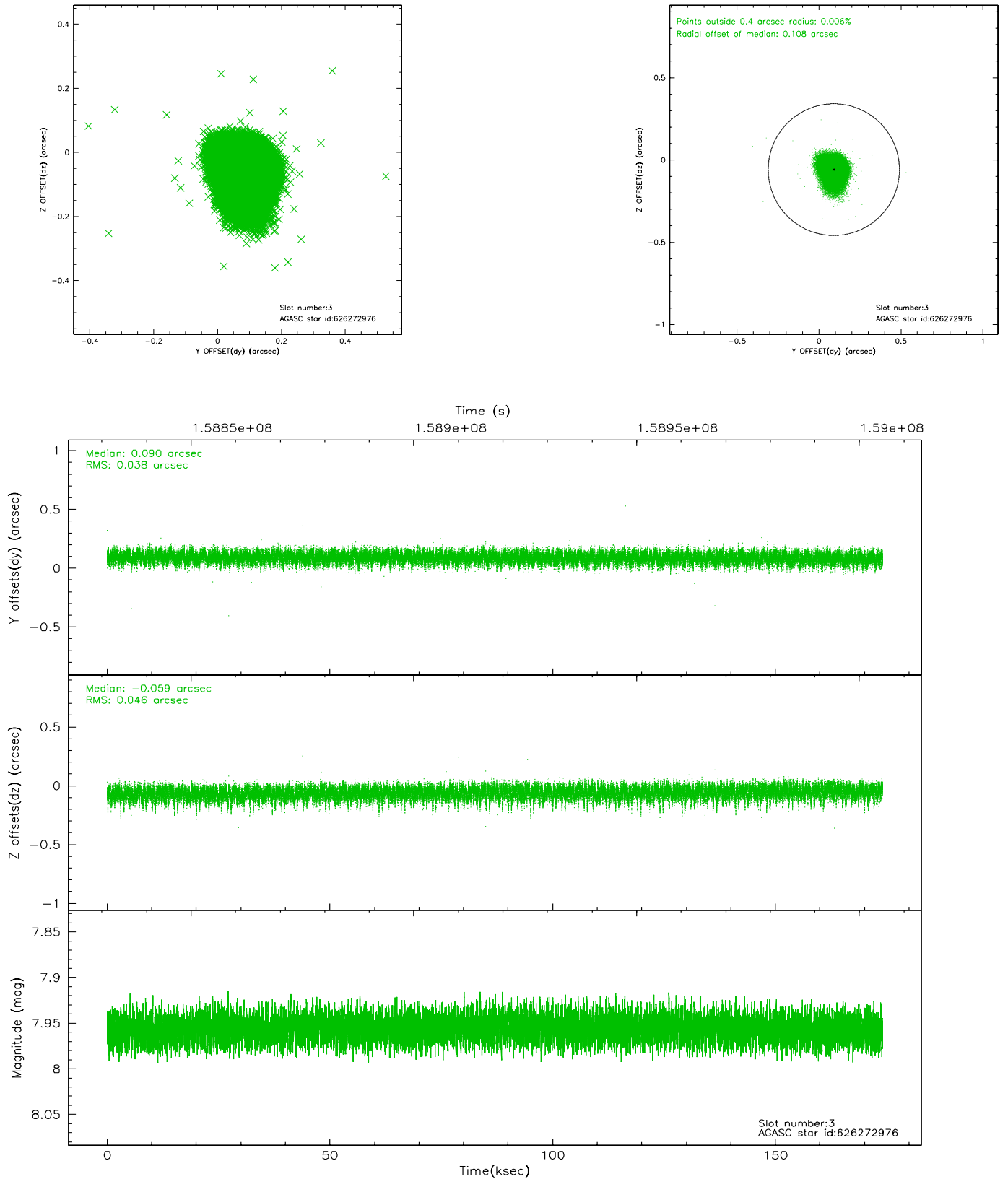


Slot Statistics

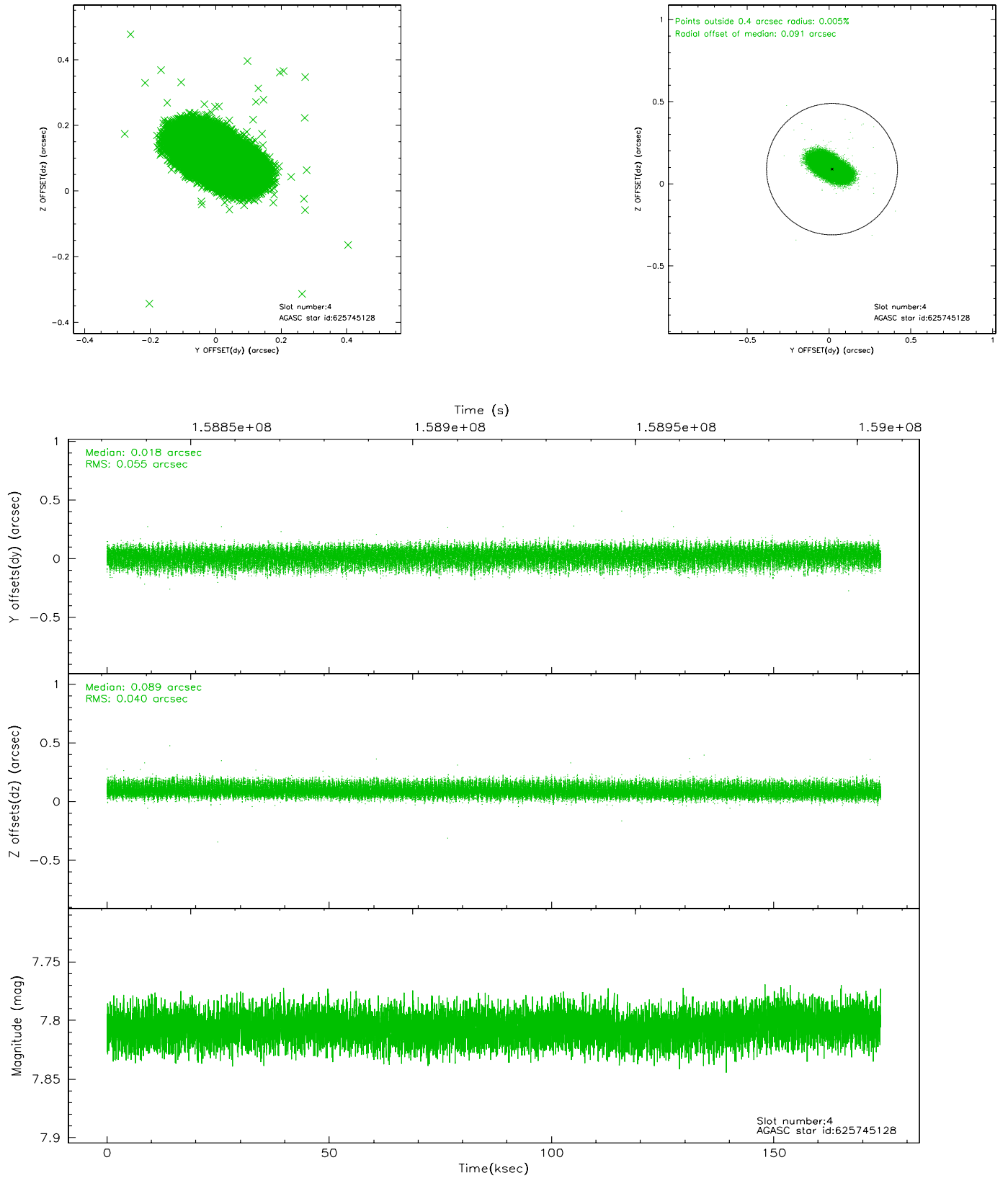
slot	status	id	mag	n_pts	med_dy	med_dz	dr1	dr2	ra	dec	mean_y	mean_z
0	FID	ACIS-I-1	7.25	42456	-0.012	0.030	0.007	0.013	0.000000	0.000000	937.45	-830.24
1	FID	ACIS-I-5	7.24	42453	-0.039	0.045	0.006	0.011	0.000000	0.000000	-1810.71	1067.38
2	FID	ACIS-I-6	7.26	42455	-0.040	-0.005	0.008	0.015	0.000000	0.000000	403.14	1711.66
3	GUIDE	626272976	7.96	84894	0.090	-0.059	0.063	0.104	83.795875	-5.926912	1480.18	-1267.94
4	GUIDE	625745128	7.80	84901	0.018	0.089	0.071	0.122	83.769930	-4.731835	-1842.82	1466.60
5	GUIDE	625745104	7.11	84906	-0.234	0.111	0.091	0.153	83.841109	-4.494168	-2325.38	2218.20
6	GUIDE	626273032	9.20	84855	0.076	-0.111	0.108	0.182	83.765167	-5.983575	1563.14	-1484.33
7	GUIDE	626272880	7.69	84895	0.046	-0.029	0.064	0.104	83.815609	-6.032748	1815.13	-1462.77

2.4 Star Slots

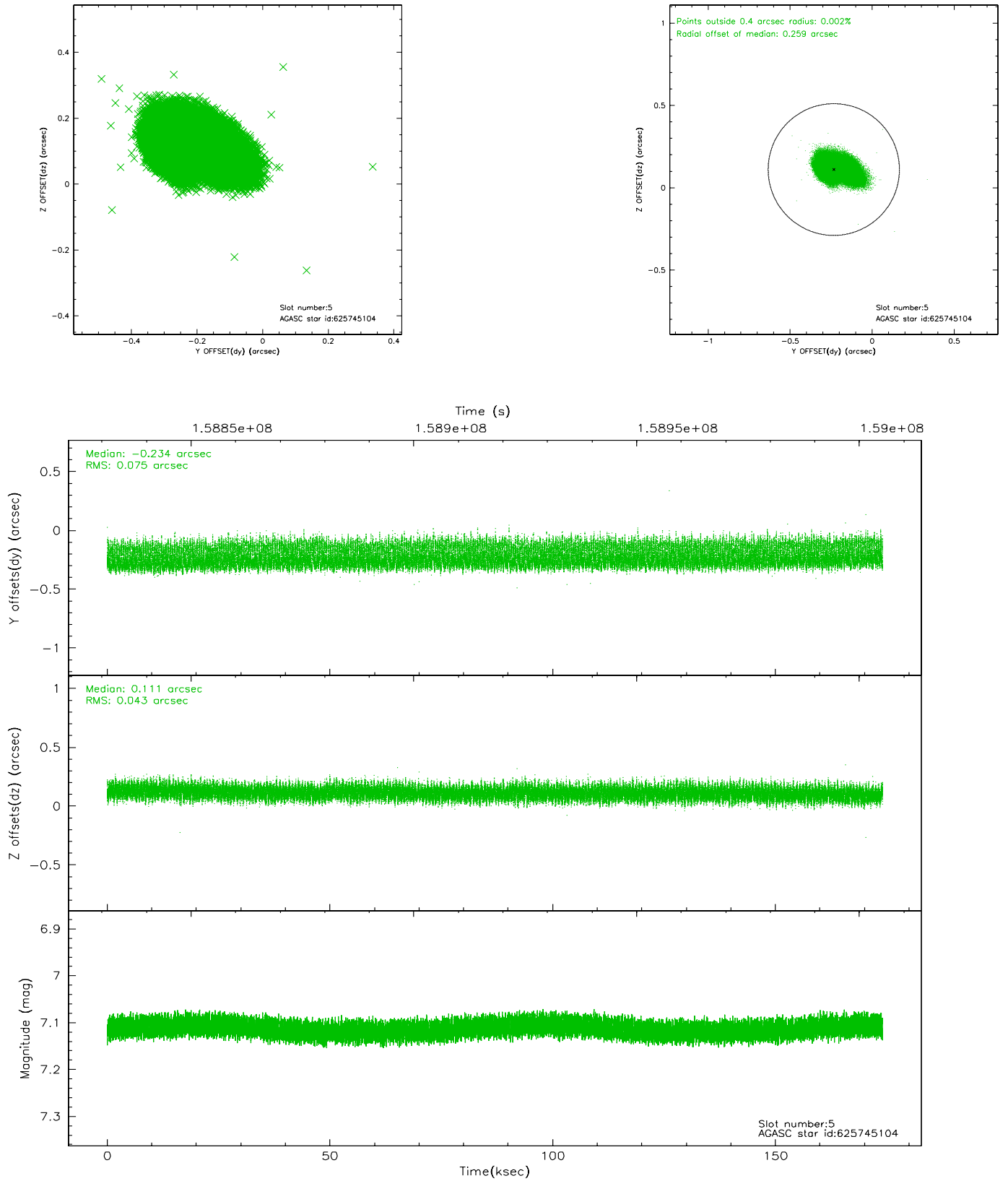
2.4.1 Slot 3



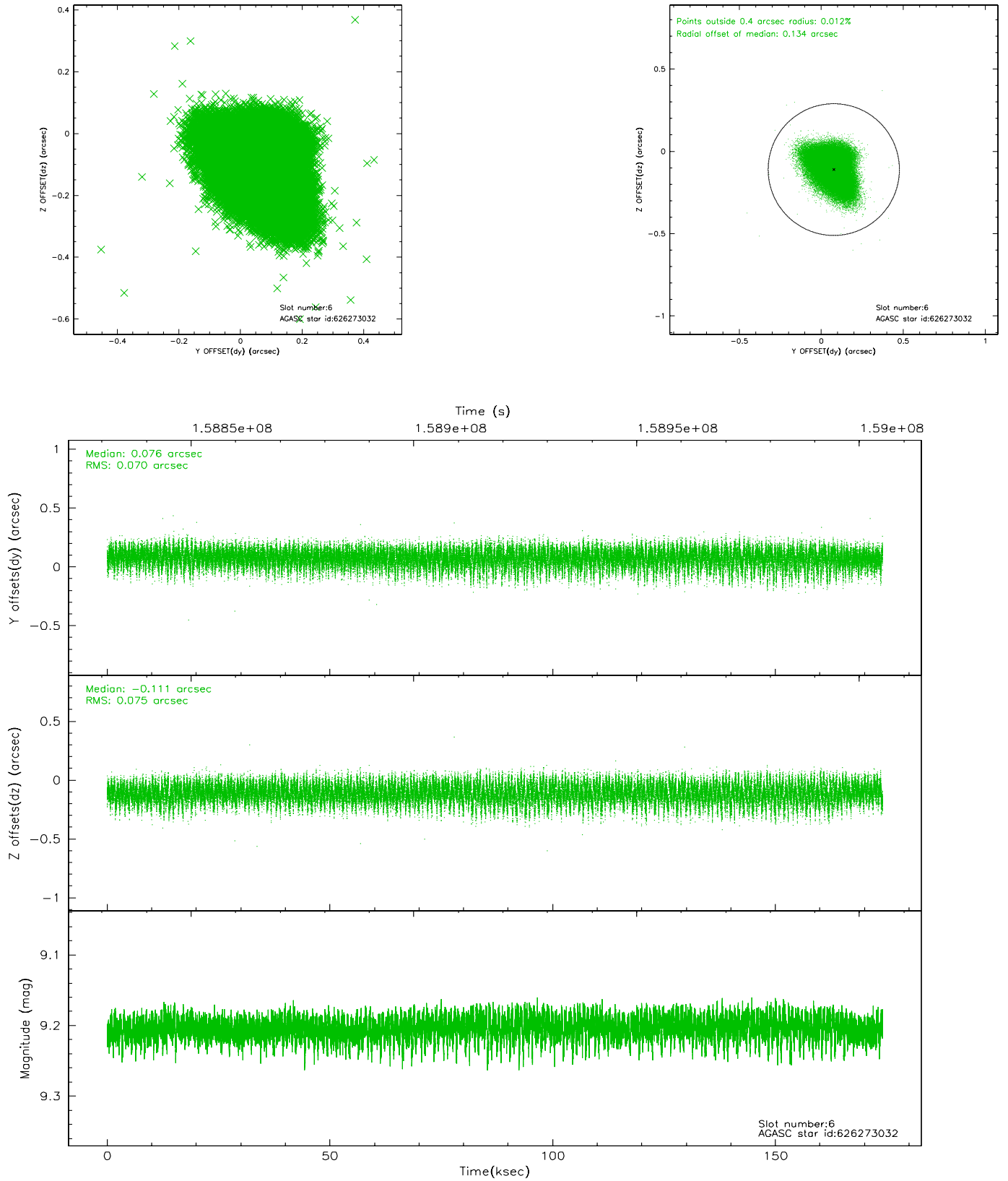
2.4.2 Slot 4



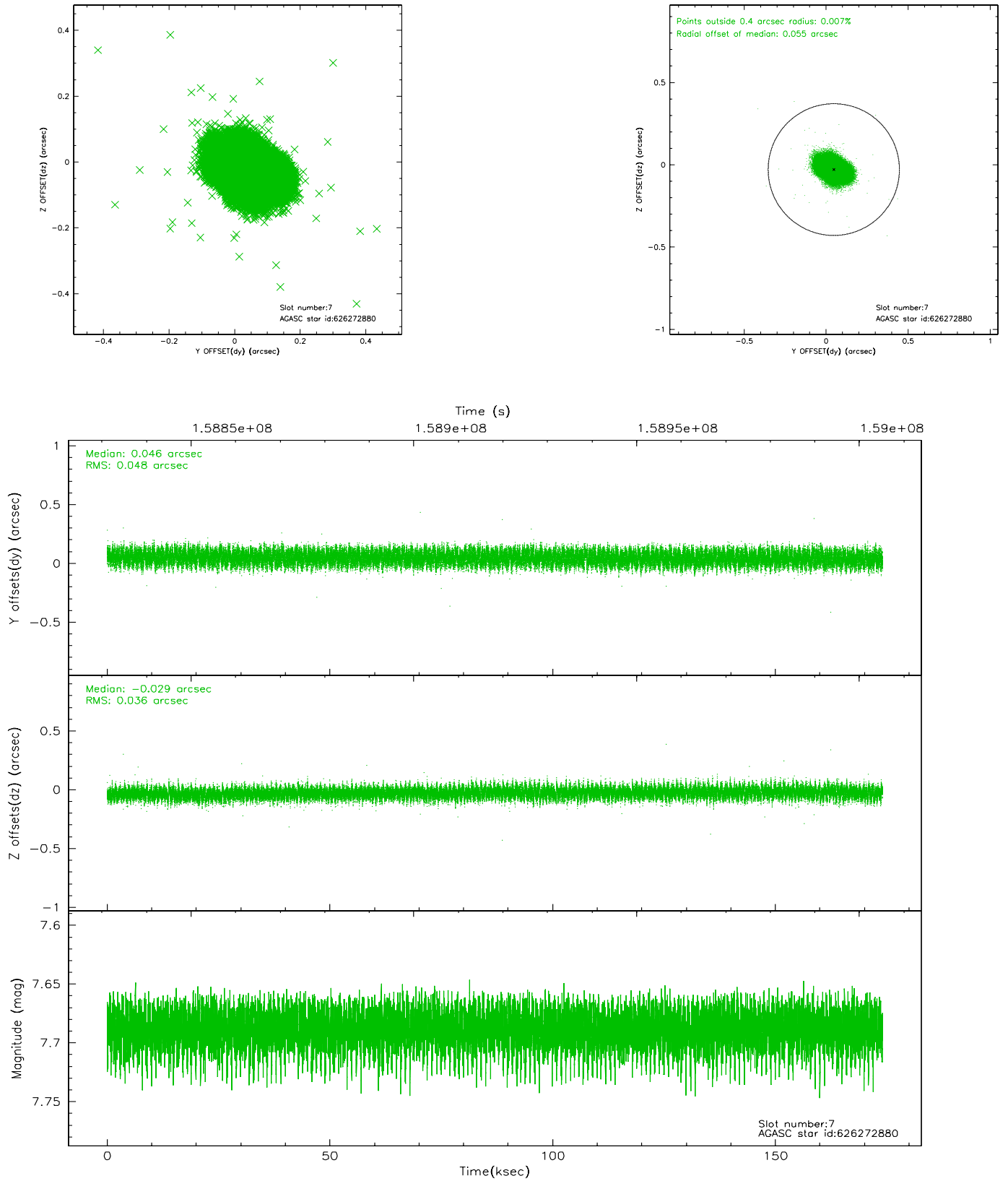
2.4.3 Slot 5



2.4.4 Slot 6

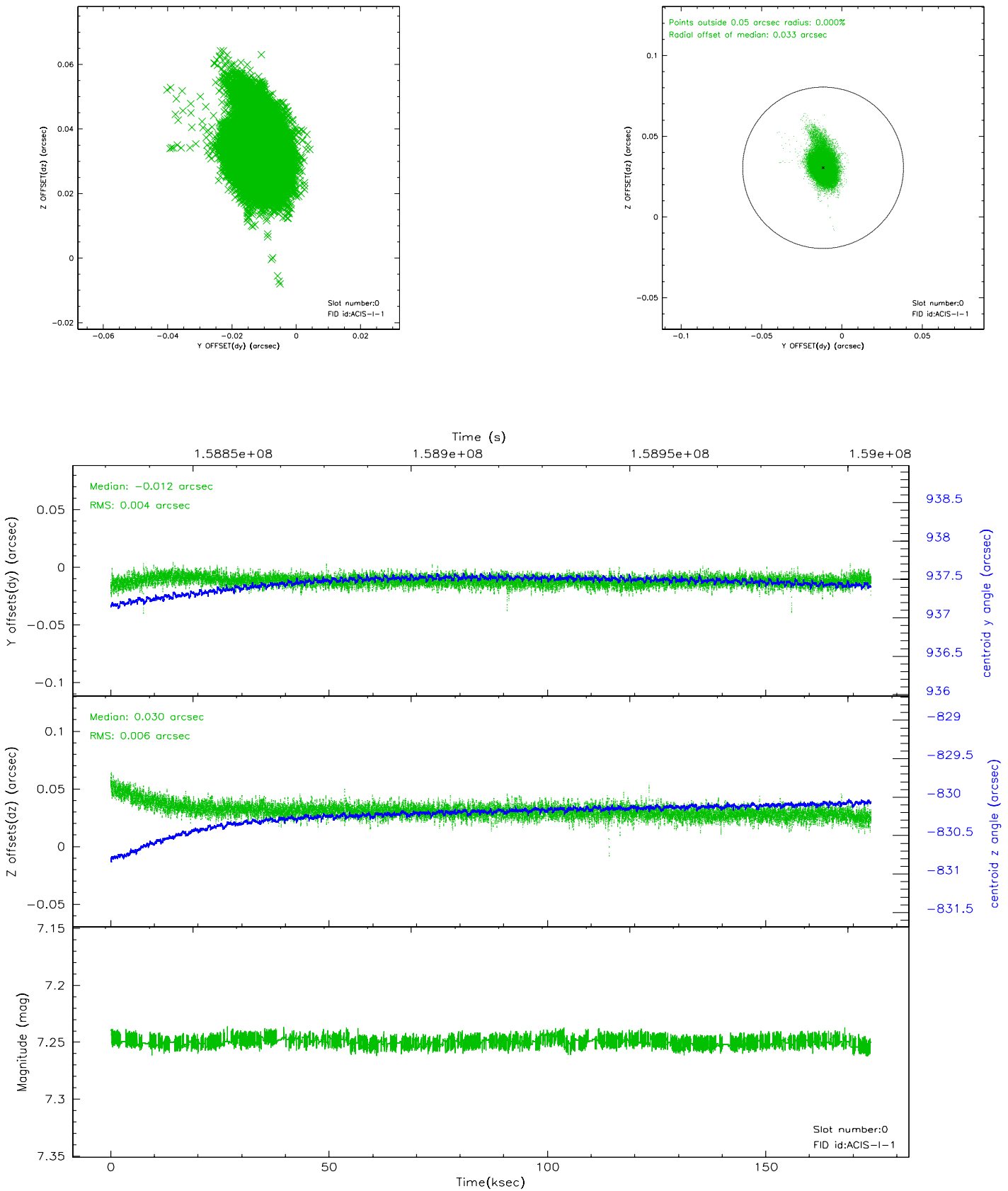


2.4.5 Slot 7

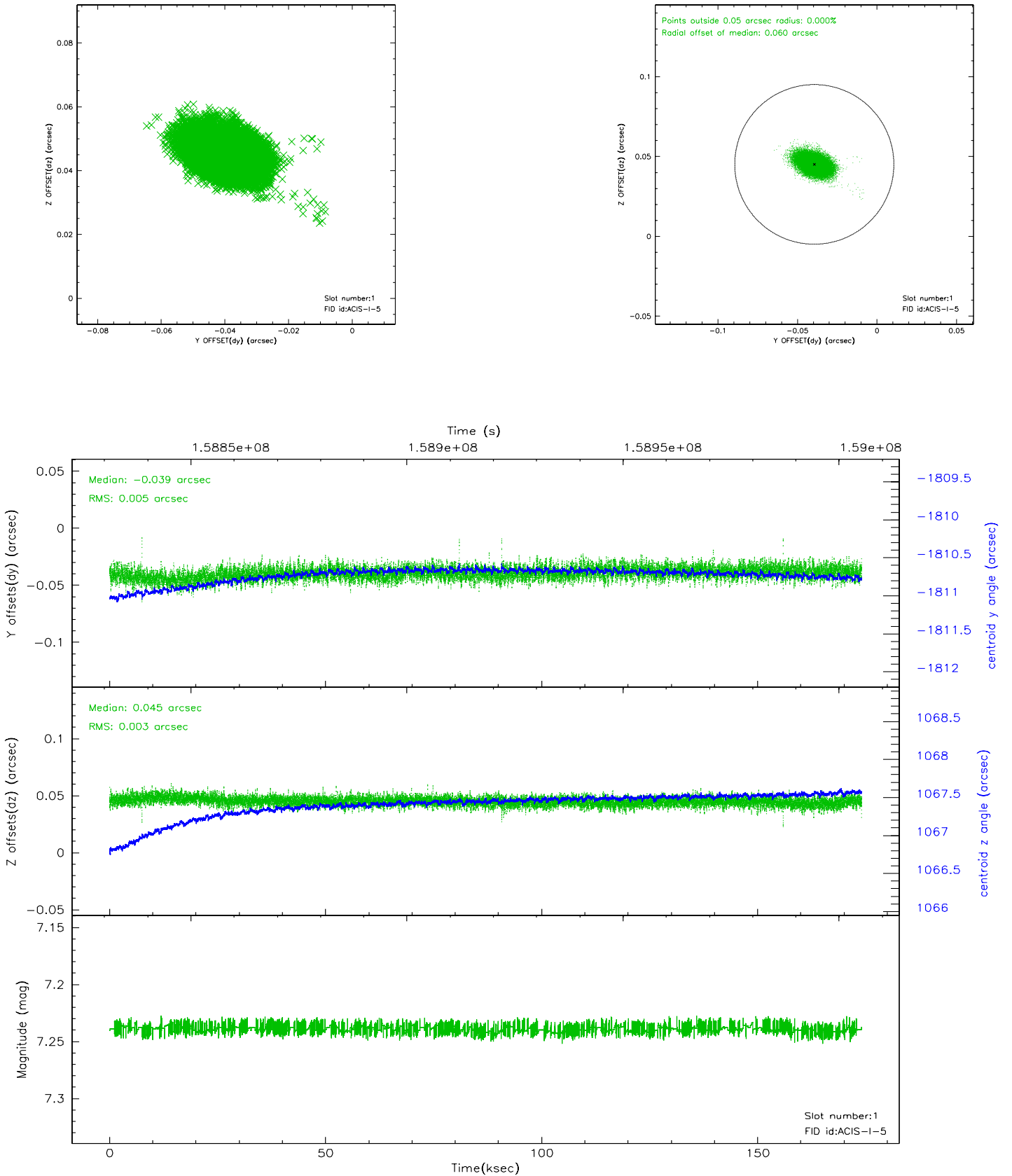


2.5 FID Slots

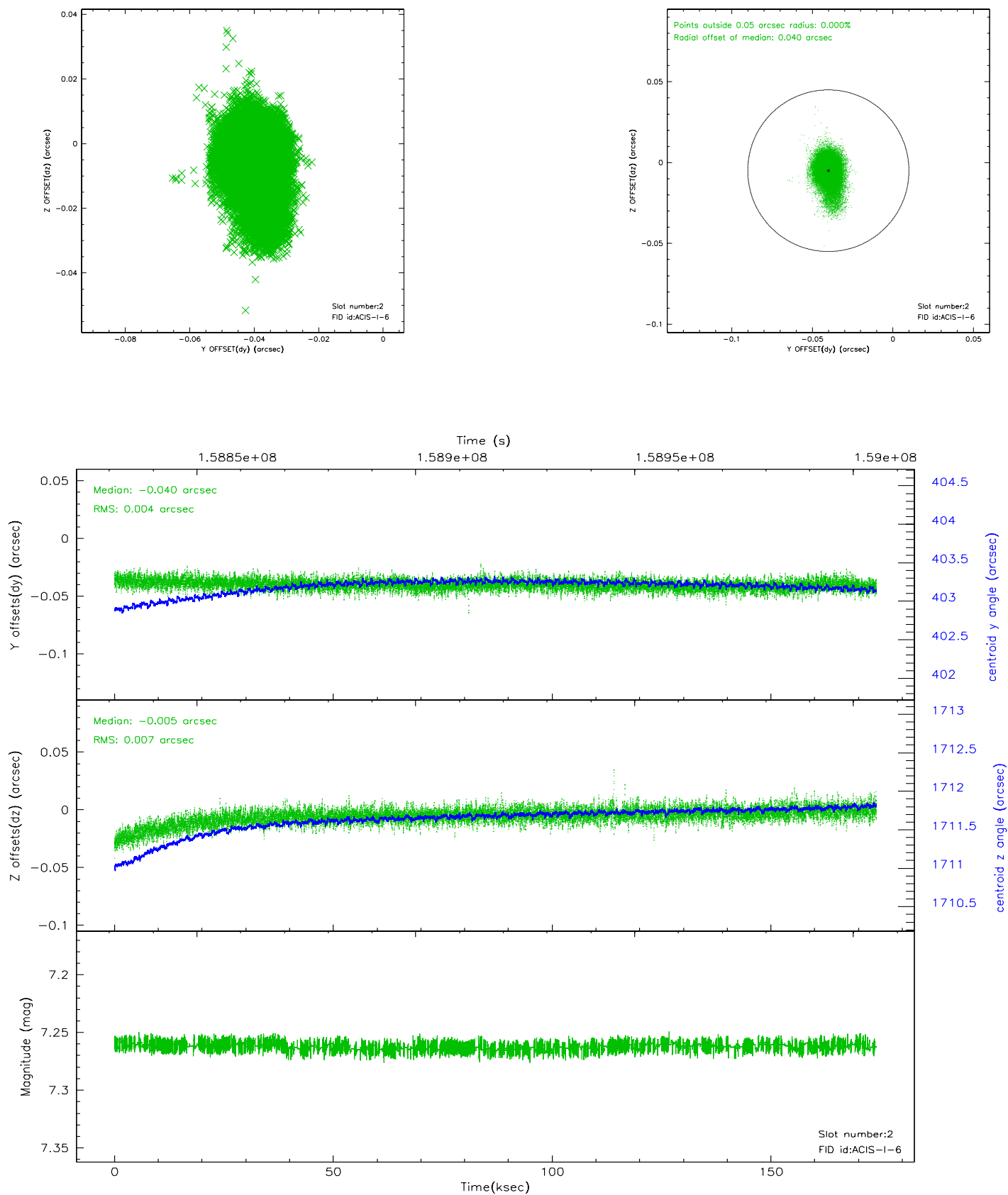
2.5.1 Slot 0



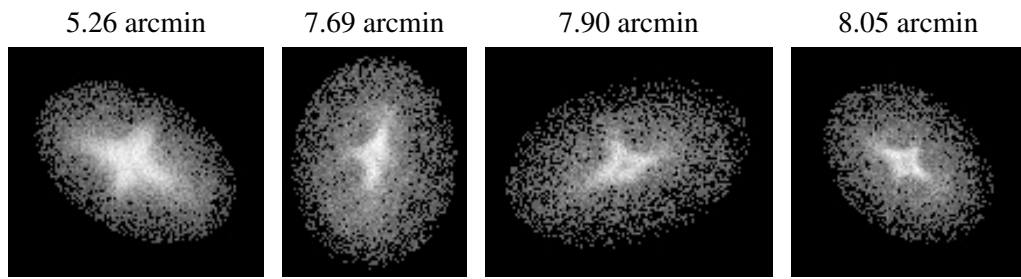
2.5.2 Slot 1



2.5.3 Slot 2



3 Point Sources



A Summary

A.1 Status

V&V Scientist	Beth Sundheim
V&V Date (YYYY-MM-DD)	2006.10.19
V&V Edition	1
V&V Disposition and Status	OK
V&V Charge Time	173.726

A.2 Comments