

V&V Reference Report

L2 ASCDS Version : 7.6.8.1

Observation 4353 - L2 Version 001
Chandra X-Ray Center

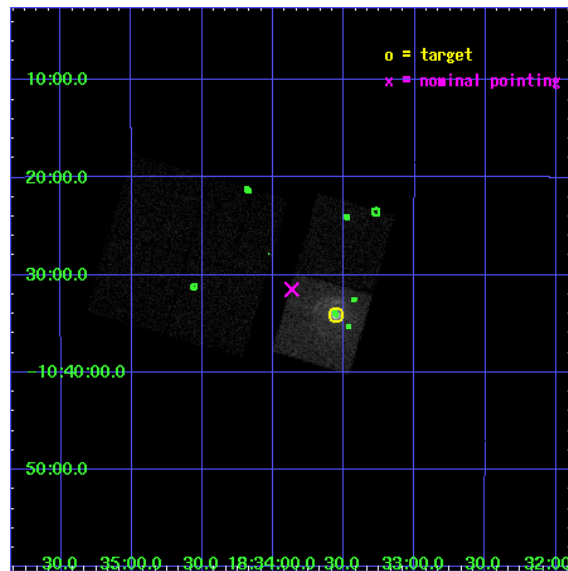
L2 Processing Date : Aug 11 2006

Contents

1	Front	2
2	OBI	3
2.1	OBI	3
2.1.1	Images	3
2.1.2	Bias	3
2.1.3	Parameters	4
2.1.4	Events	4
2.2	Compared Parameters	5
2.3	Aspect	6
2.4	Star Slots	9
2.4.1	Slot 3	9
2.4.2	Slot 4	10
2.4.3	Slot 5	11
2.4.4	Slot 6	12
2.4.5	Slot 7	13
2.5	FID Slots	14
2.5.1	Slot 0	14
2.5.2	Slot 1	15
2.5.3	Slot 2	16
3	Point Sources	17
A	Summary	18
A.1	Status	18
A.2	Comments	18

1 Front

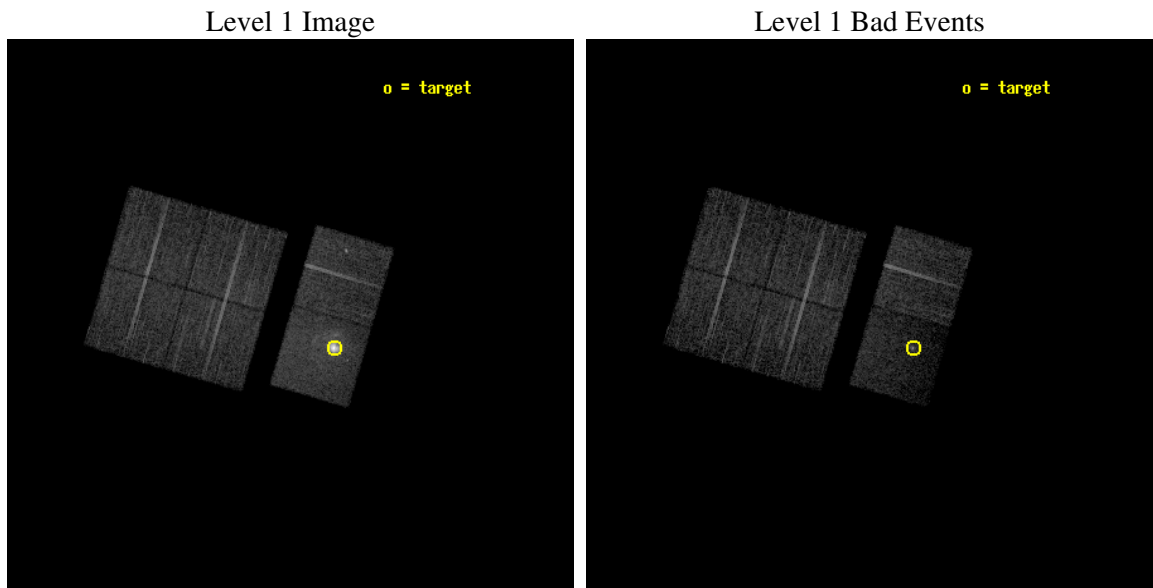
seq_num	590318
obs_id	4353
title	AO4 CALIBRATION OBSERVATIONS TO MEASURE THE MIRROR VIGNETTING
observer	Dr. CXC Calibration
object	G21.5-0.9[Chip S3, T=120, Offsets=-1,5,11.7]
dtcycle	0
cycle	P
ra_targ	278.389583
dec_targ	-10.568528
ra_nom	278.46678899229
dec_nom	-10.525108298503
roll_nom	106.28407314678
revision	2
ontime	9478.3180141747
livetime	9358.2978443213
ontime0	9484.7999646664
ontime1	9484.7999646664
ontime2	9484.7999646664
ontime3	9484.7999646664
ontime6	9484.7999646664
ontime7	9478.3180141747
l2events	72911



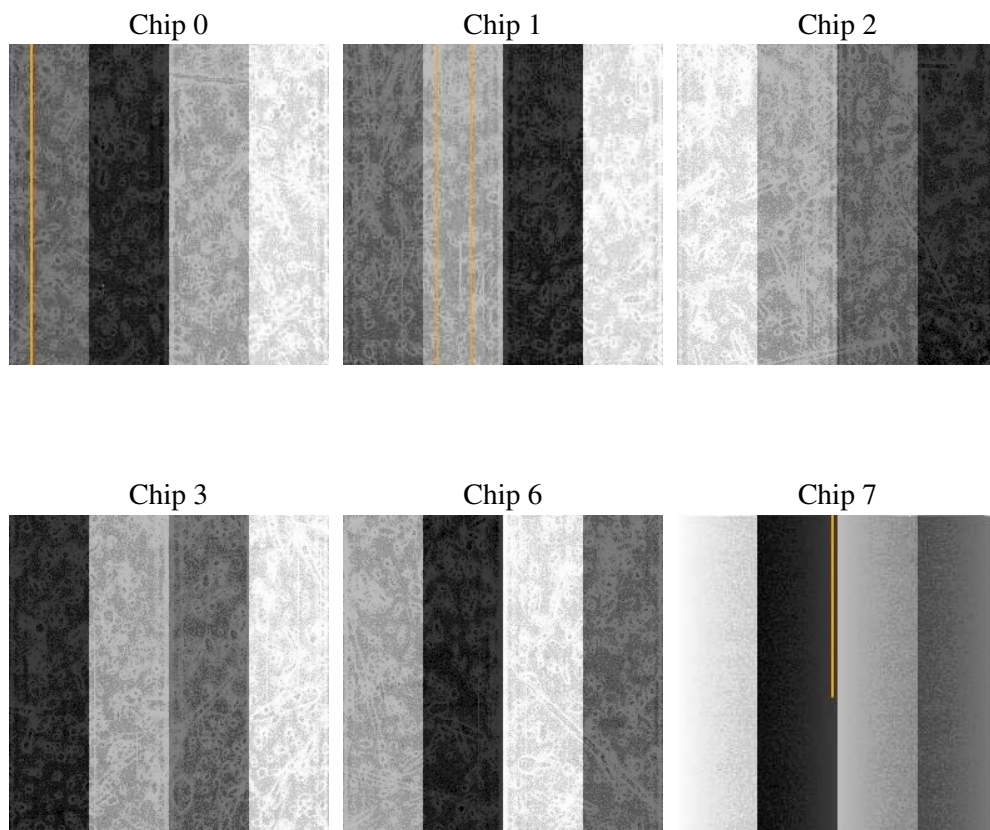
2 OBI

2.1 OBI

2.1.1 Images



2.1.2 Bias



2.1.3 Parameters

obi_num	1
ascdsver	7.6.8.1
caldsver	3.2.3
date	2006-08-11T22:01:07
revision	2

sched_exp_time	9520.000000
ontime	9483.1875514686
ontime0	9489.6695019603
ontime1	9489.6694720387
ontime2	9489.6694720387
ontime3	9489.6694720387
ontime6	9489.6695019603
ontime7	9483.1875514686
l1events	301037

2.1.4 Events

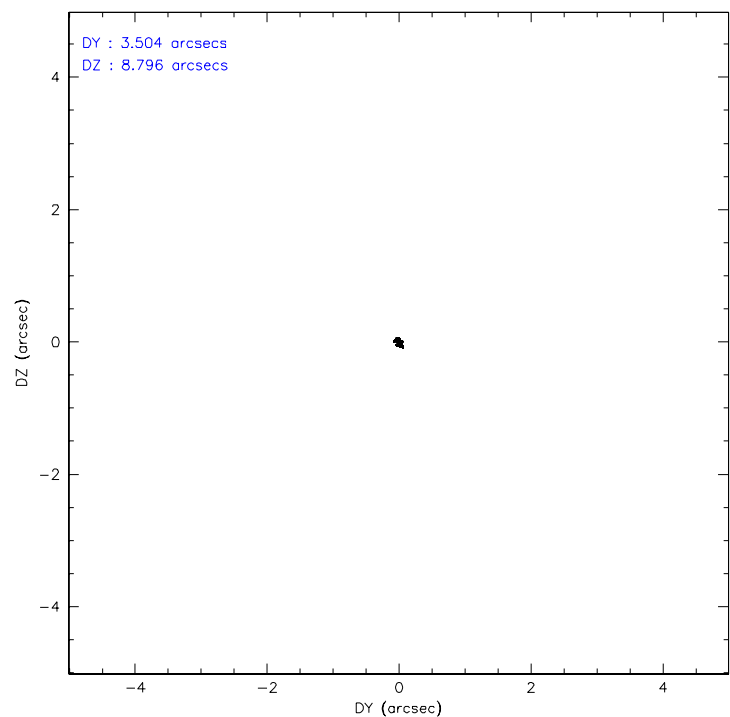
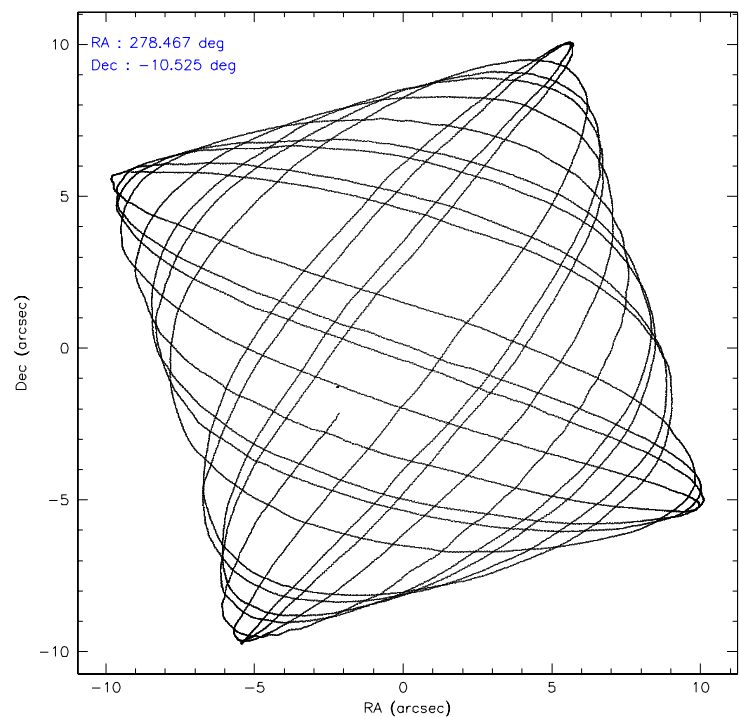
	ccd 0	ccd 1	ccd 2	ccd 3	ccd 6	ccd 7
level 1 events	43762	41790	46916	44672	46643	77254
rejected events	39043	37113	42237	40182	40428	24223
rejected %	89%	88%	90%	89%	86%	31%

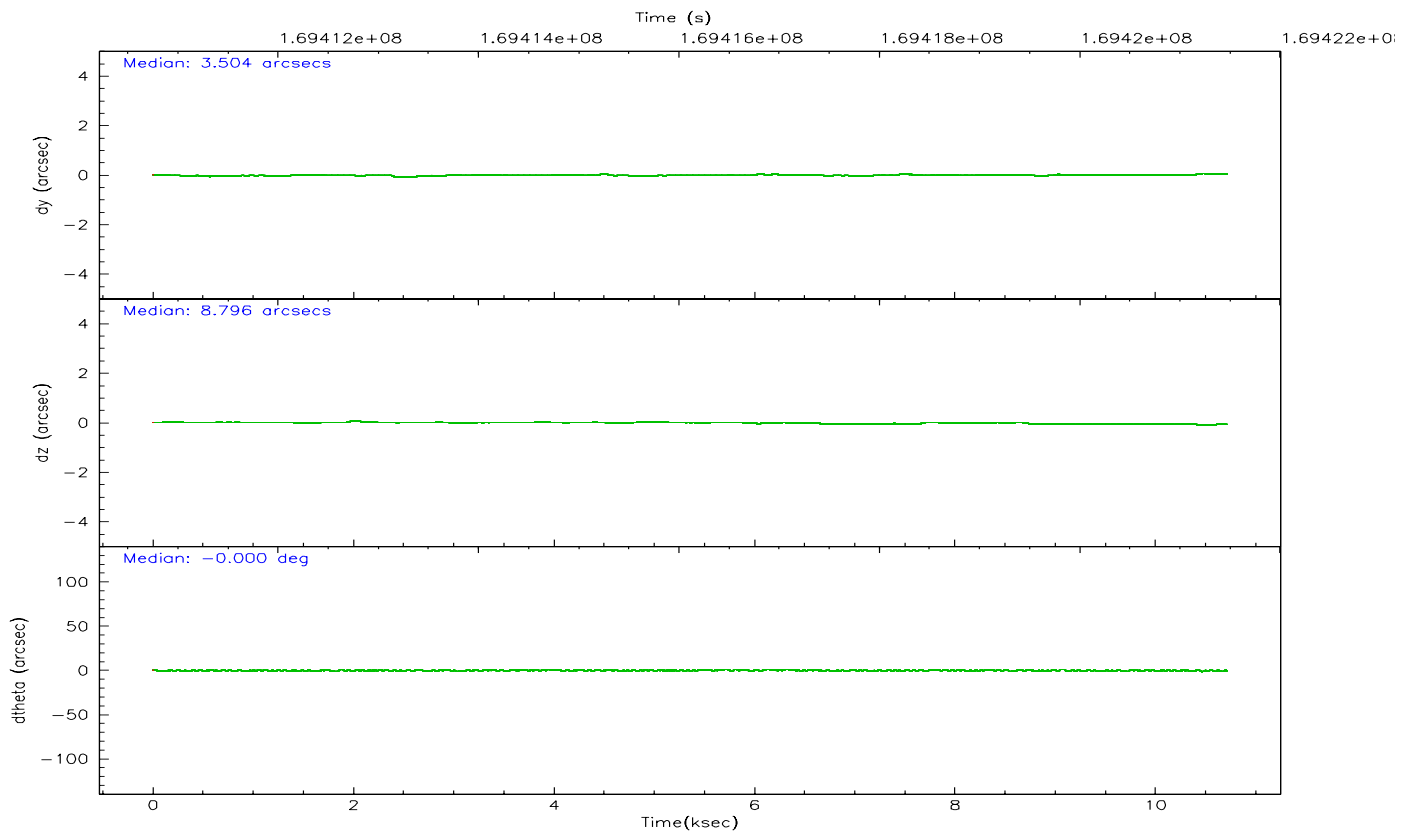
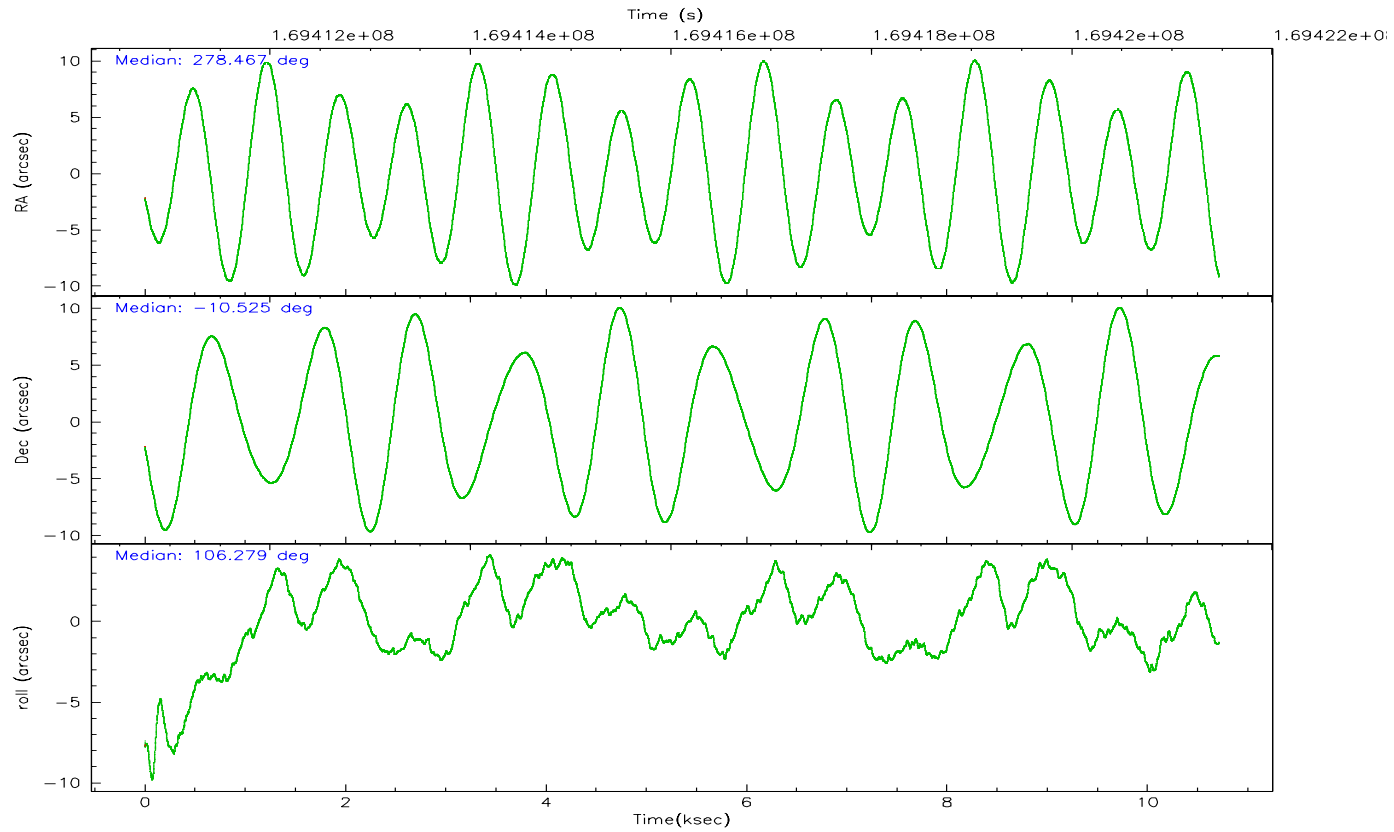
	ccd 0	ccd 1	ccd 2	ccd 3	ccd 6	ccd 7
grade 0 events	1698	1680	1787	1823	2900	8017
	3%	4%	3%	4%	6%	10%
grade 1 events	23	28	33	31	18	73
	0%	0%	0%	0%	0%	0%
grade 2 events	1073	958	1049	913	1178	14169
	2%	2%	2%	2%	2%	18%
grade 3 events	547	588	507	521	578	4843
	1%	1%	1%	1%	1%	6%
grade 4 events	556	550	518	484	558	4601
	1%	1%	1%	1%	1%	5%
grade 5 events	1375	1438	1287	1527	1613	3849
	3%	3%	2%	3%	3%	4%
grade 6 events	848	907	822	751	1004	21435
	1%	2%	1%	1%	2%	27%
grade 7 events	37642	35641	40913	38622	38794	20267
	86%	85%	87%	86%	83%	26%

2.2 Compared Parameters

Parameter	Planned	Actual	Parameter	Planned	Actual
Instrument	ACIS	ACIS	Obspar format version number	6	6
Detector	ACIS-012367	ACIS-012367	Obspar file type	PREDICTED	ACTUAL
Grating	NONE	NONE	Obspar update status	NONE	UPDATED
Data mode	VFAINT	VFAINT	On-chip summing requested	N	N
Observation mode	POINTING	POINTING	Subarray requested	NONE	NONE
Pointing RA	278.487085	278.4667889922861	Alternating exposures requested	N	N
Pointing Dec	-10.543601	-10.525108298503	Primary exposure time	0.000000	3.2
Pointing Roll	106.131154	106.2840731467751			
Window start time	168134464.184000	168134464.184000			
Window stop time	170640064.184000	170640064.184000			
SIM focus pos (mm)	-0.684267	-0.6828225247311905			
SIM defocus (mm)	0	0.001444936568705701			
SIM translation stage pos (mm)	-201.840523	-201.8467180939352			
SIM translation stage offset (mm)	11.708	11.71419551092742			
Observation start time	169411946.184000	169410483.14482			
Observation start date	2003-05-15T18:51:22	2003-05-15T18:28:03			
Observation end time	169421466.184000	169423094.74535			
Observation end date	2003-05-15T21:30:02	2003-05-15T21:58:14			
Read mode	TIMED	TIMED			

2.3 Aspect



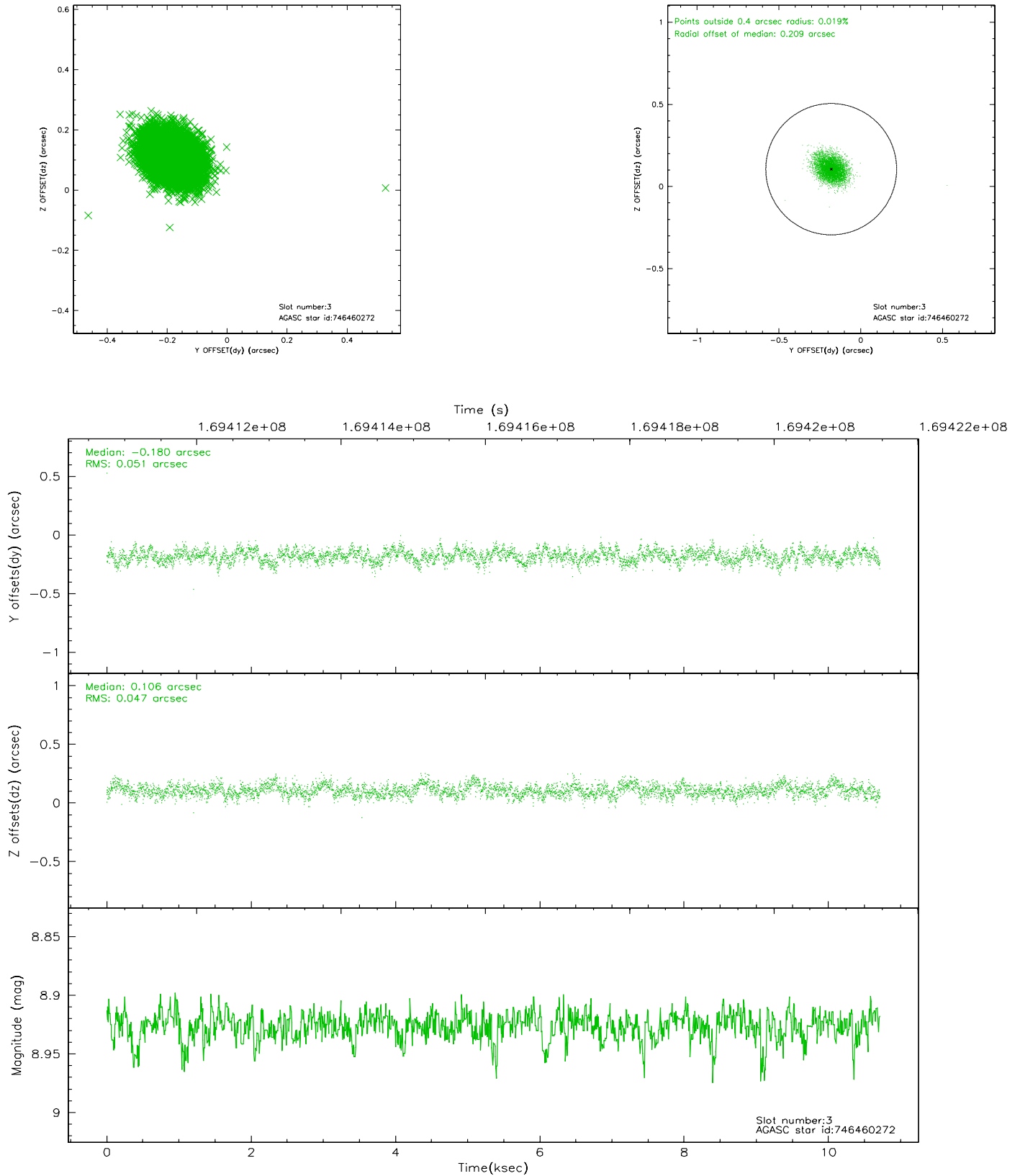


Slot Statistics

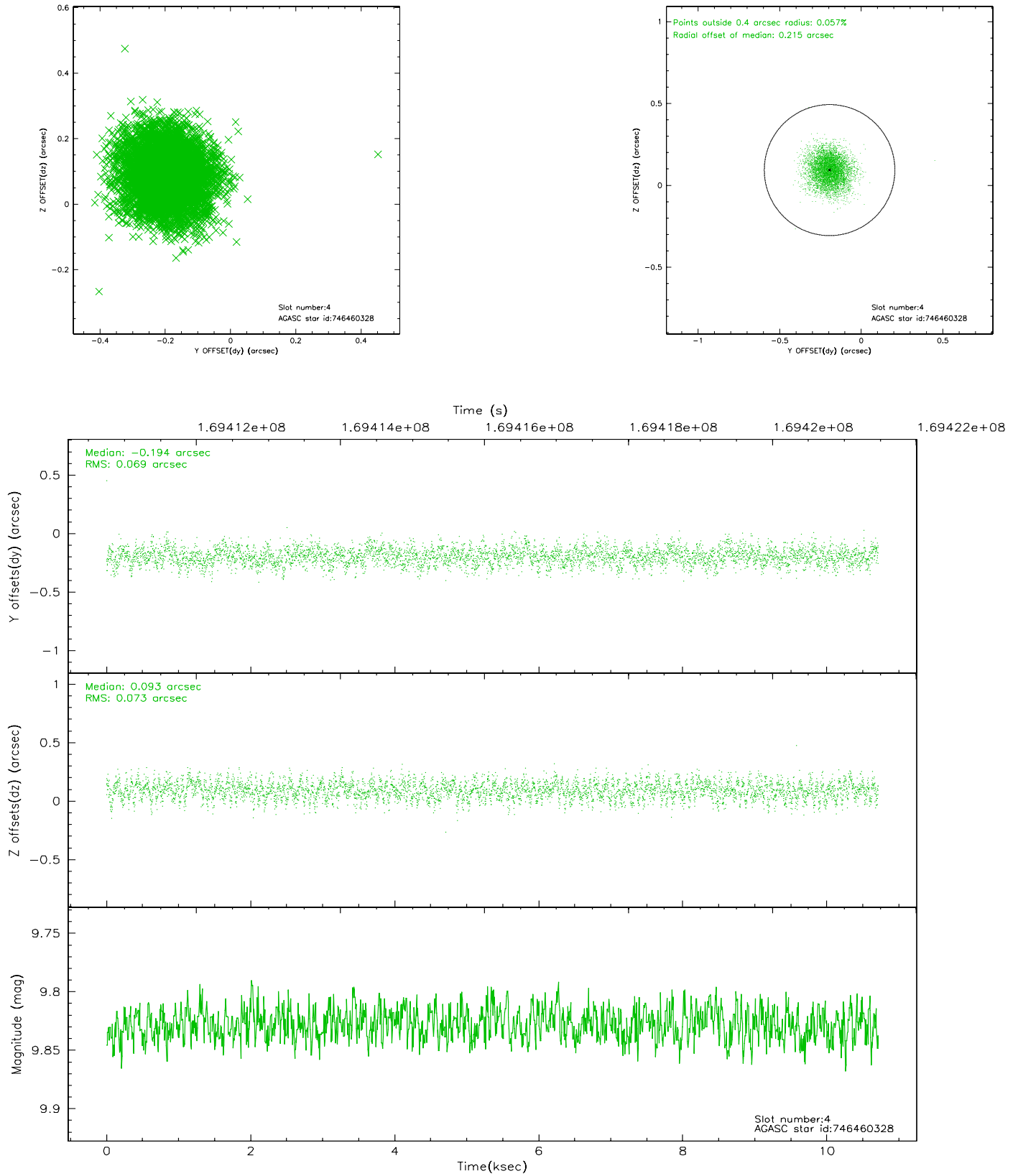
slot	status	id	mag	n_pts	med_dy	med_dz	dr1	dr2	ra	dec	mean_y	mean_z
0	FID	ACIS-S-2	7.15	2612	0.118	0.175	0.007	0.012	0.000000	0.000000	-756.83	-1488.22
1	FID	ACIS-S-4	7.23	2611	-0.028	-0.103	0.006	0.011	0.000000	0.000000	2156.21	419.39
2	FID	ACIS-S-5	7.22	2611	-0.121	-0.061	0.007	0.011	0.000000	0.000000	-1809.16	413.93
3	GUIDE	746460272	8.93	5223	-0.180	0.106	0.073	0.120	278.847488	-10.152127	998.64	-1617.82
4	GUIDE	746460328	9.83	5219	-0.194	0.093	0.108	0.170	278.603974	-9.898096	2117.31	-1043.58
5	GUIDE	746462392	8.53	5222	0.110	0.067	0.090	0.137	279.038421	-10.890715	-1743.36	-1525.02
6	GUIDE	746462456	8.39	5222	0.049	0.006	0.060	0.098	278.652171	-10.530173	-116.38	-574.74
7	GUIDE	746995400	9.61	5220	0.222	-0.270	0.112	0.188	278.078957	-11.289885	-2181.16	2130.55

2.4 Star Slots

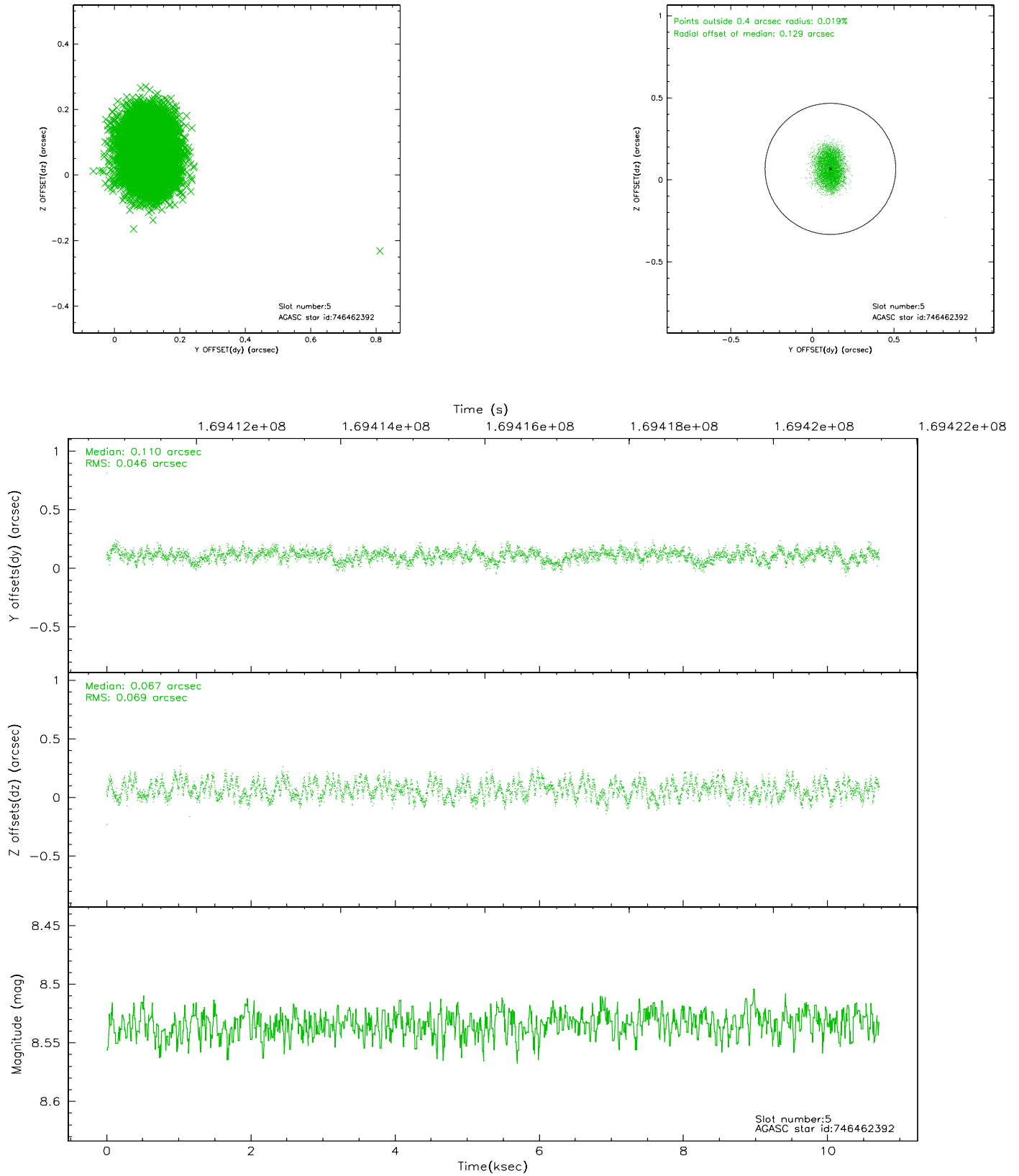
2.4.1 Slot 3



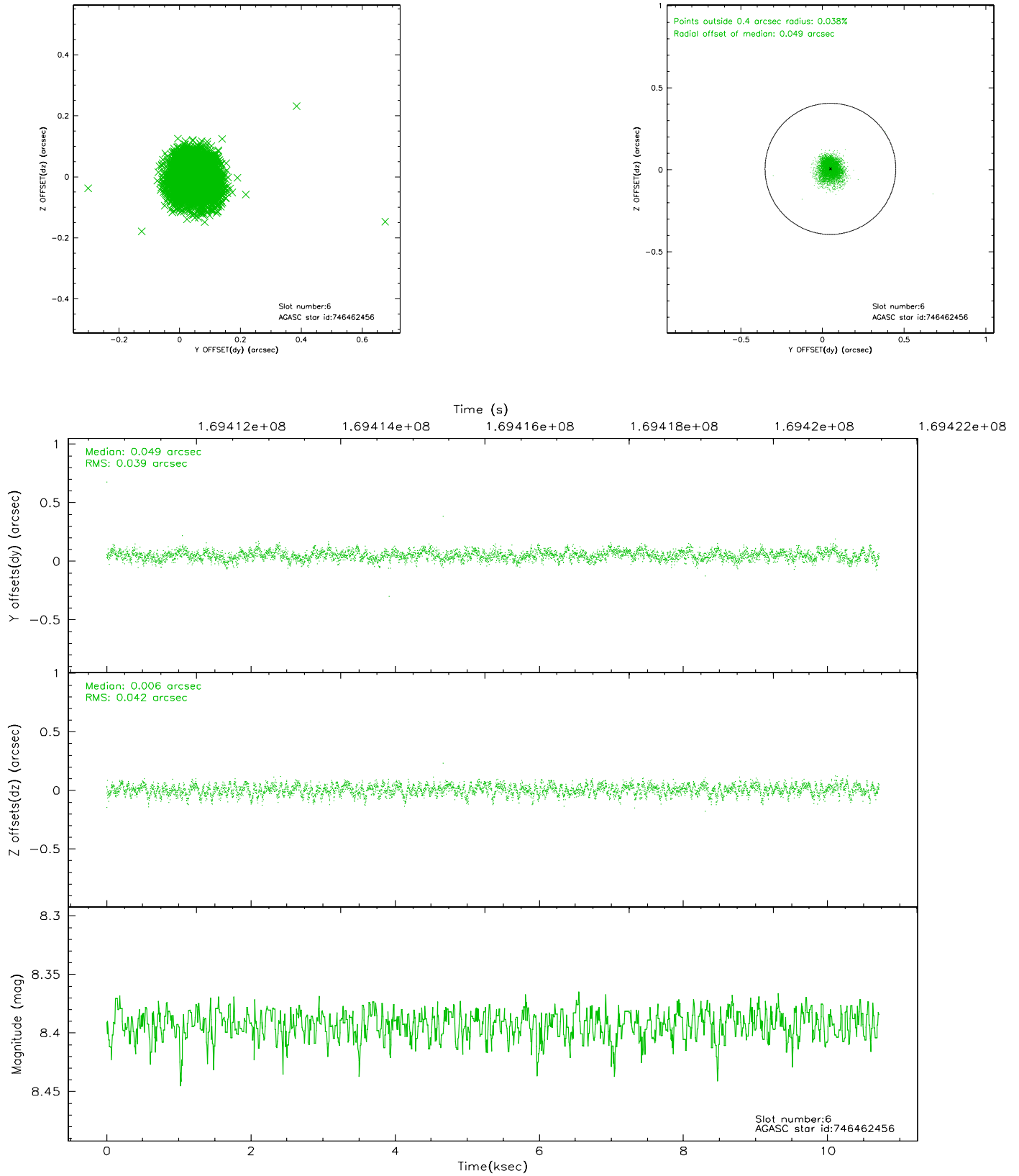
2.4.2 Slot 4



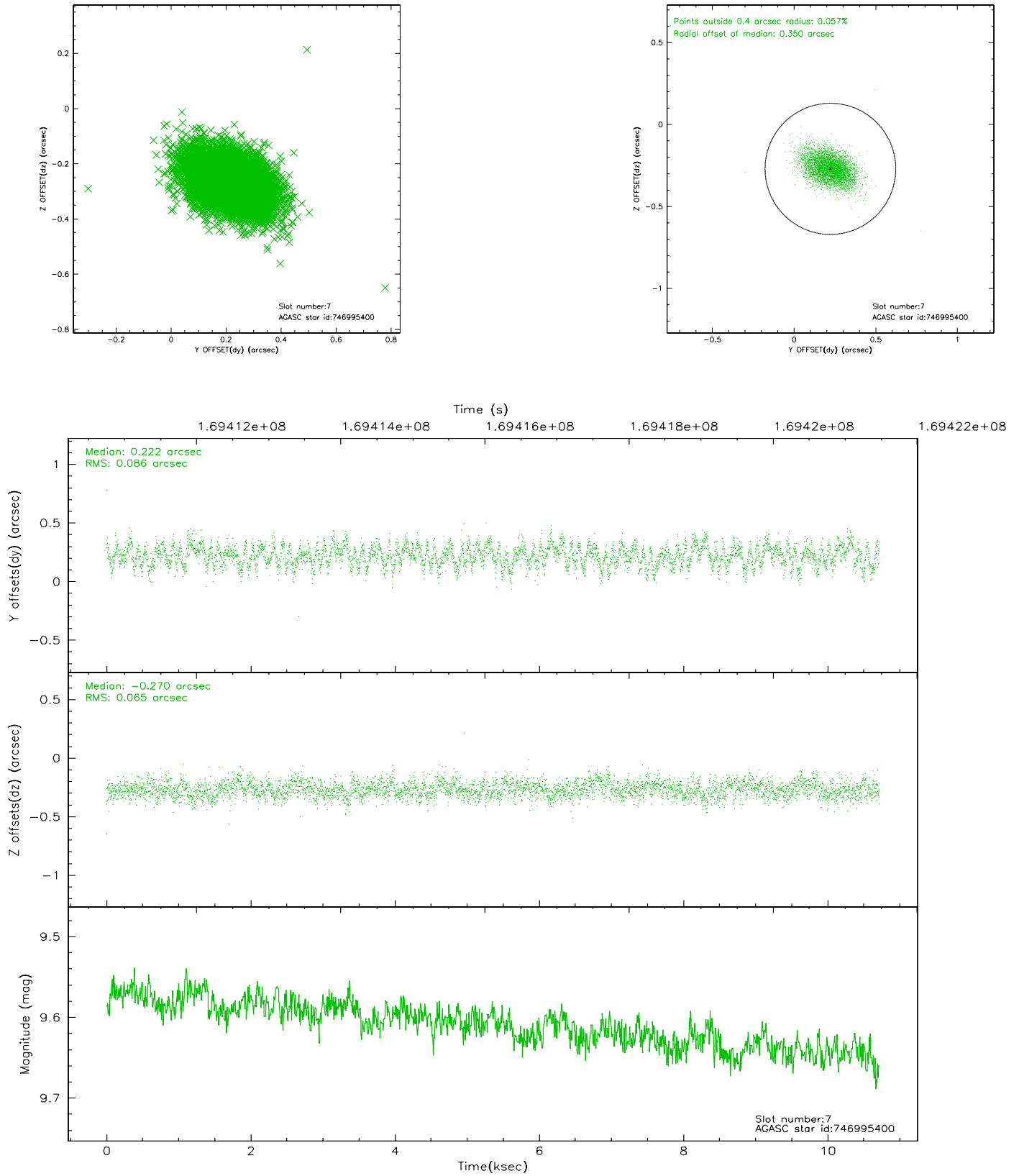
2.4.3 Slot 5



2.4.4 Slot 6

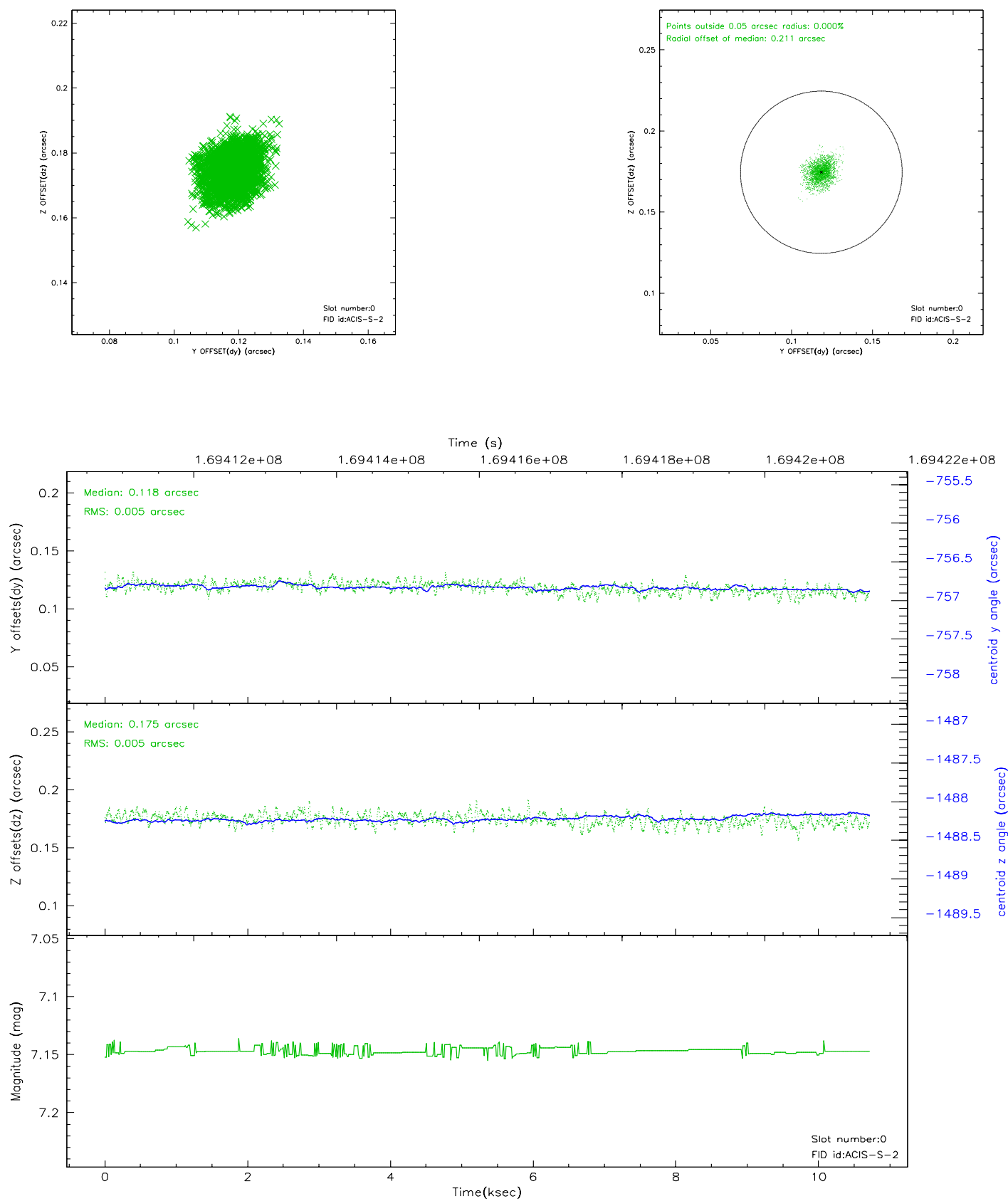


2.4.5 Slot 7

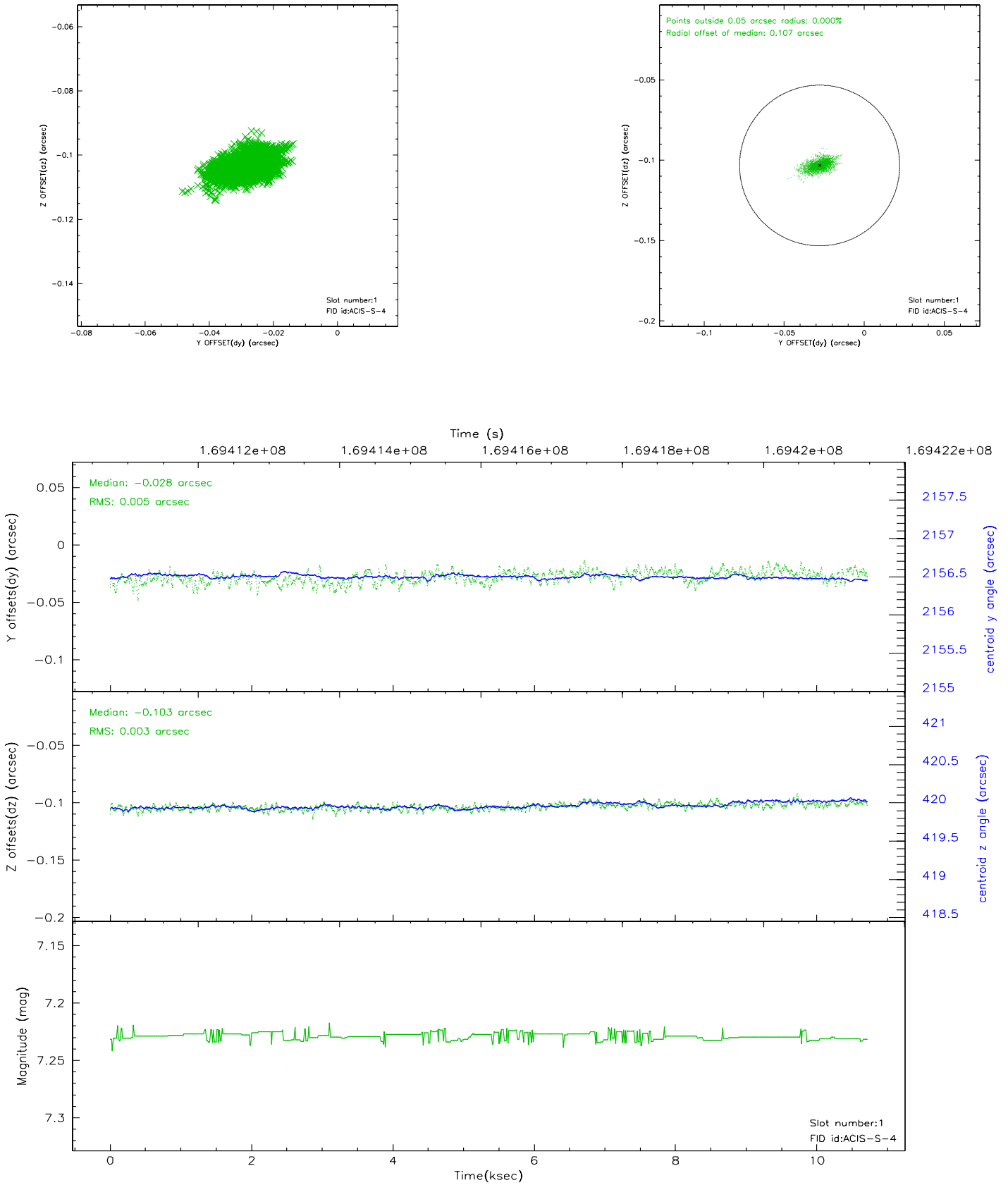


2.5 FID Slots

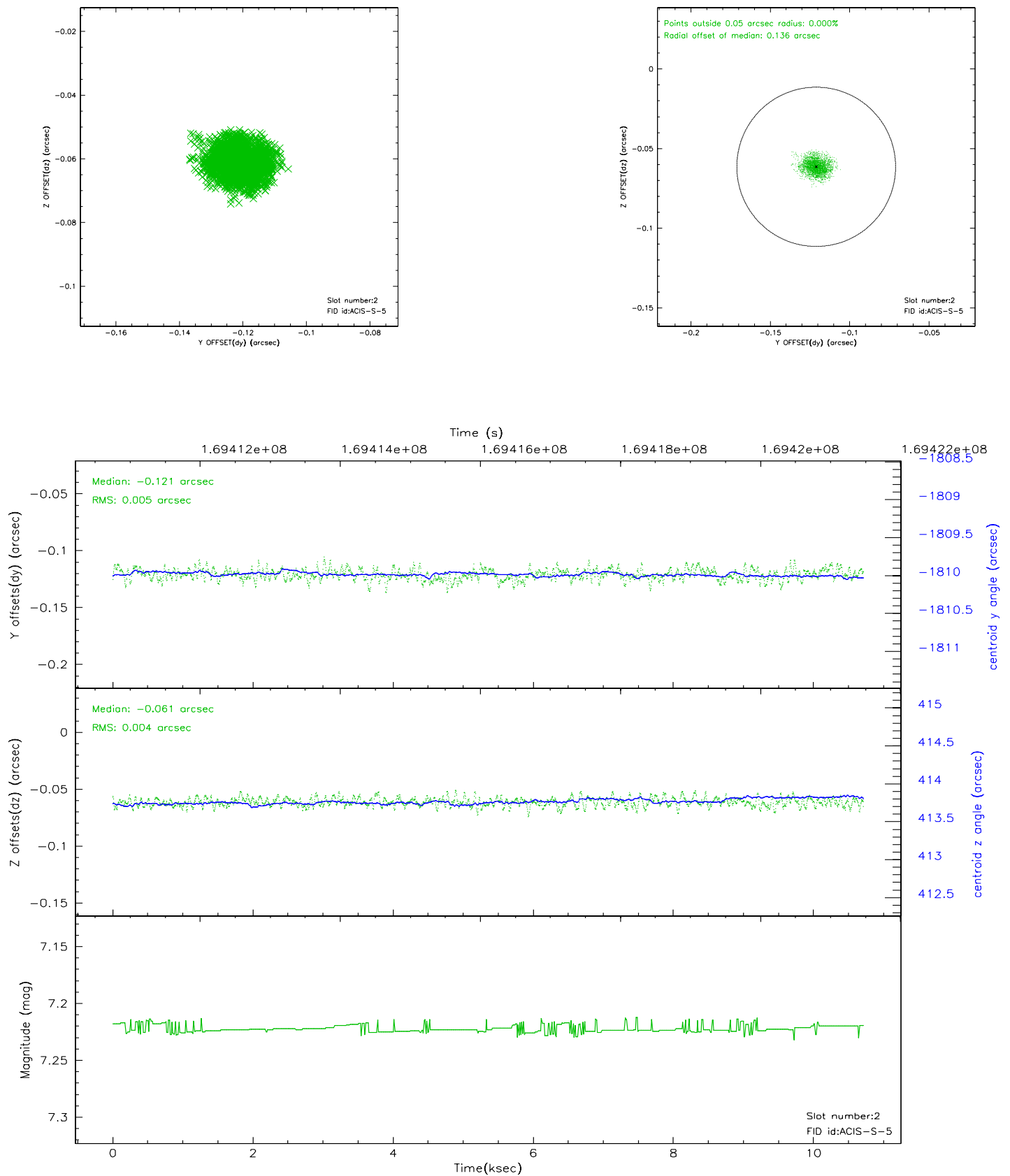
2.5.1 Slot 0



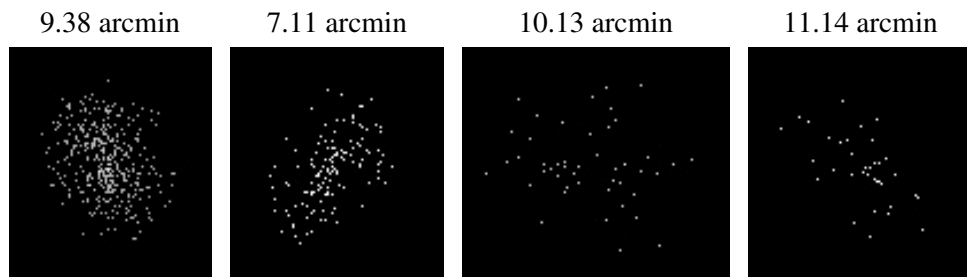
2.5.2 Slot 1



2.5.3 Slot 2



3 Point Sources



A Summary

A.1 Status

V&V Scientist	Jen Lauer
V&V Date (YYYY-MM-DD)	2006.08.13
V&V Edition	1
V&V Disposition and Status	OK
V&V Charge Time	9.48

A.2 Comments

Window constraint met.