

V&V Reference Report

L2 ASCDS Version : 7.6.8

Observation 4073 - L2 Version 001
Chandra X-Ray Center

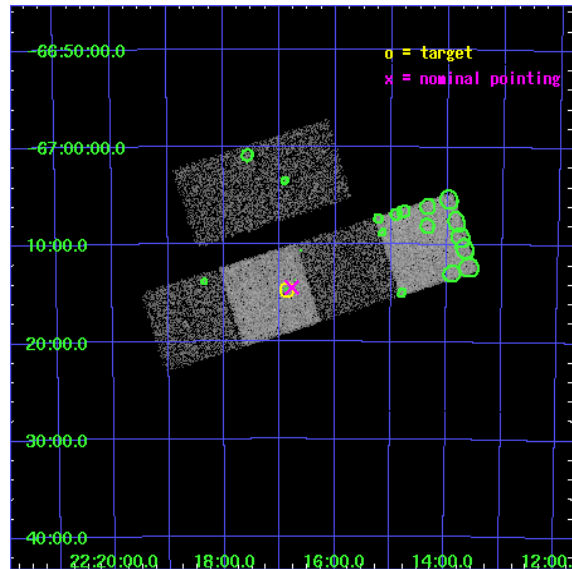
L2 Processing Date : Jul 22 2006

Contents

1	Front	2
2	OBI	3
2.1	OBI	3
2.1.1	Images	3
2.1.2	Bias	3
2.1.3	Parameters	4
2.1.4	Events	4
2.2	Compared Parameters	5
2.3	Aspect	6
2.4	Star Slots	9
2.4.1	Slot 3	9
2.4.2	Slot 4	10
2.4.3	Slot 5	11
2.4.4	Slot 6	12
2.4.5	Slot 7	13
2.5	FID Slots	14
2.5.1	Slot 0	14
2.5.2	Slot 1	15
2.5.3	Slot 2	16
3	Point Sources	17
A	Summary	18
A.1	Status	18
A.2	Comments	18

1 Front

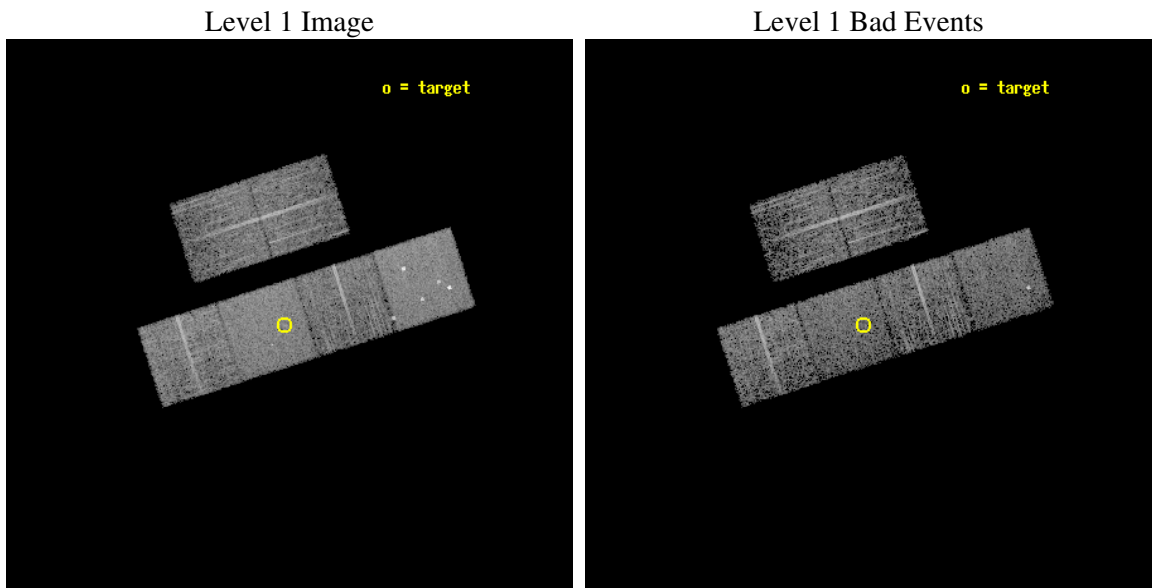
seq_num	700752
obs_id	4073
title	A CHANDRA SURVEY OF THE MOST LUMINOUS QUASARS AT $Z > 4$
observer	Dr. Cristian Vignali
object	BR 2213-6729
dtcycle	0
cycle	P
ra_targ	334.21625
dec_targ	-67.245389
ra_nom	334.19424555879
dec_nom	-67.240978470888
roll_nom	162.2929501382
revision	2
ontime	4959.9999815226
livetime	4897.1934752031
ontime2	4959.9999815226
ontime3	4959.9999815226
ontime5	4959.9999815226
ontime6	4959.9999815226
ontime7	4959.9999815226
ontime8	4959.9999815226
l2events	47761



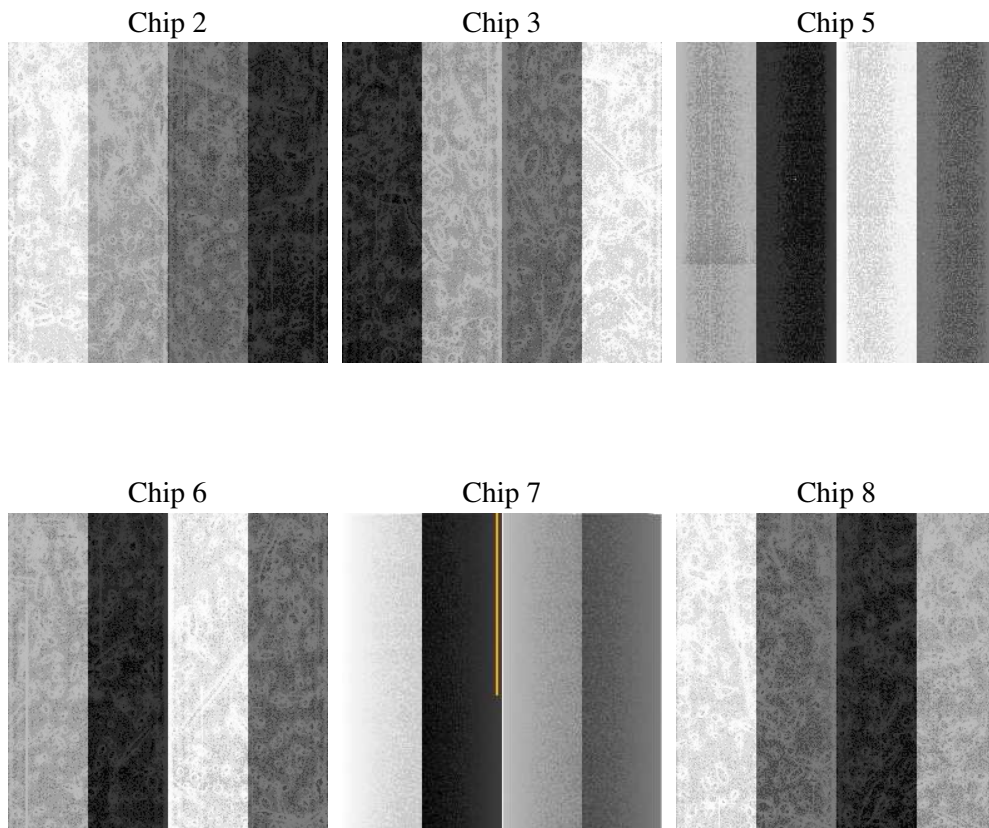
2 OBI

2.1 OBI

2.1.1 Images



2.1.2 Bias



2.1.3 Parameters

obi_num	1
ascdsver	7.6.8
caldsver	3.2.2
date	2006-07-22T18:29:42
revision	2

sched_exp_time	5000.000000
ontime	4965.2121292055
ontime2	4965.2121292055
ontime3	4965.2121292055
ontime5	4965.2121292055
ontime6	4965.2121292055
ontime7	4965.2121292055
ontime8	4965.2121292055
l1events	222401

2.1.4 Events

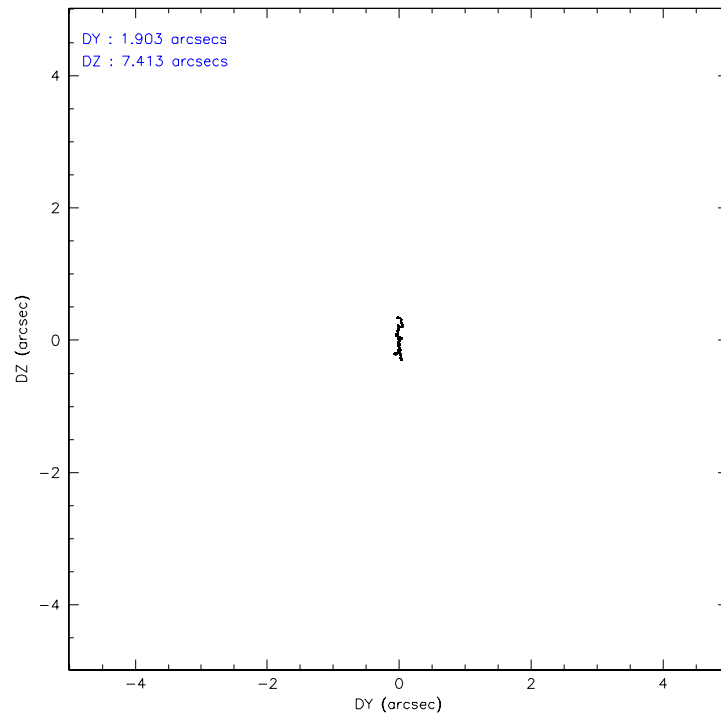
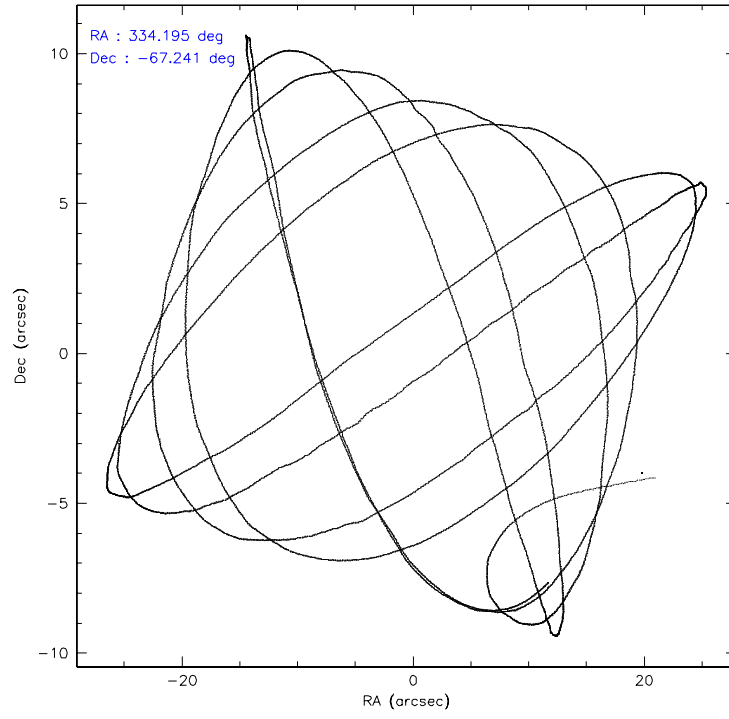
	ccd 2	ccd 3	ccd 5	ccd 6	ccd 7	ccd 8
level 1 events	31716	30716	47785	31873	41585	38726
rejected events	27861	27185	25677	28060	25439	31054
rejected %	87%	88%	53%	88%	61%	80%

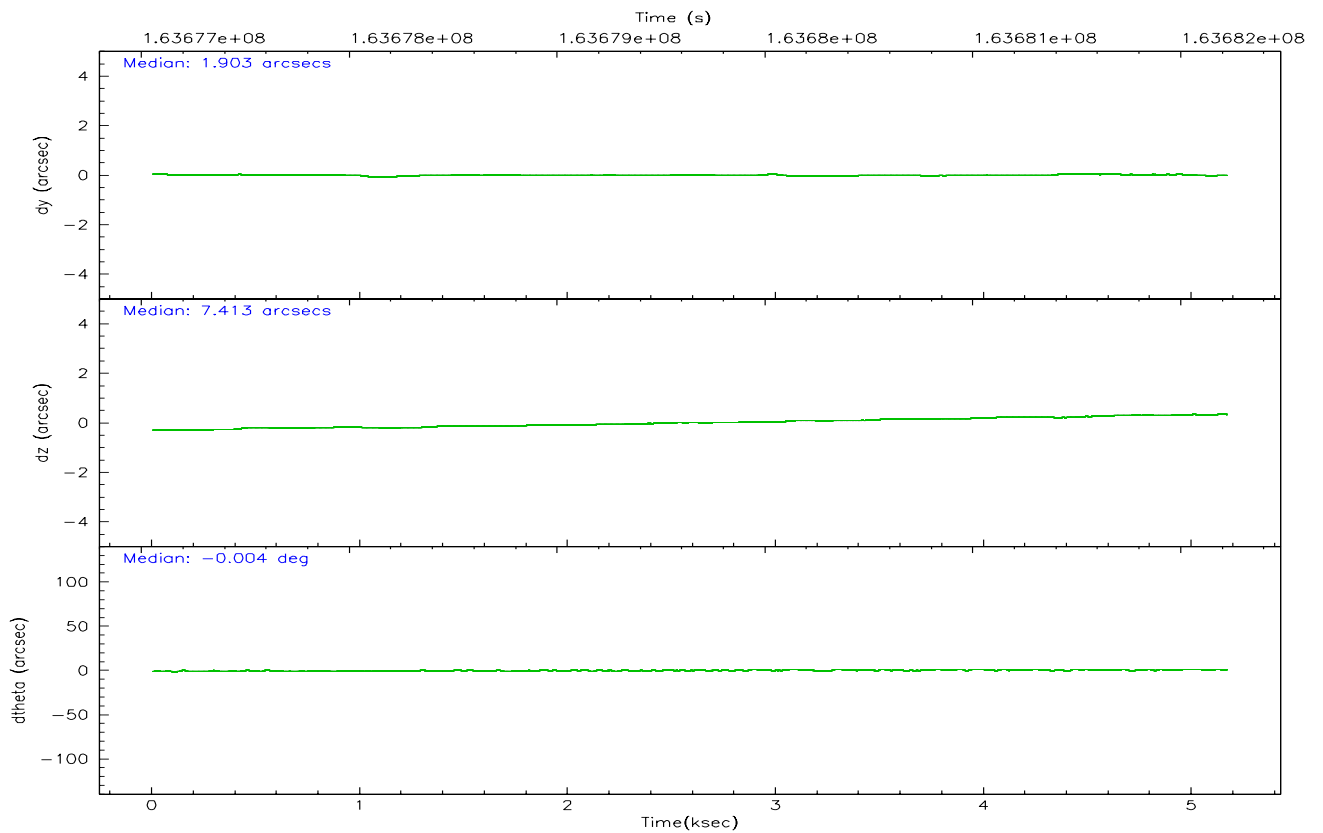
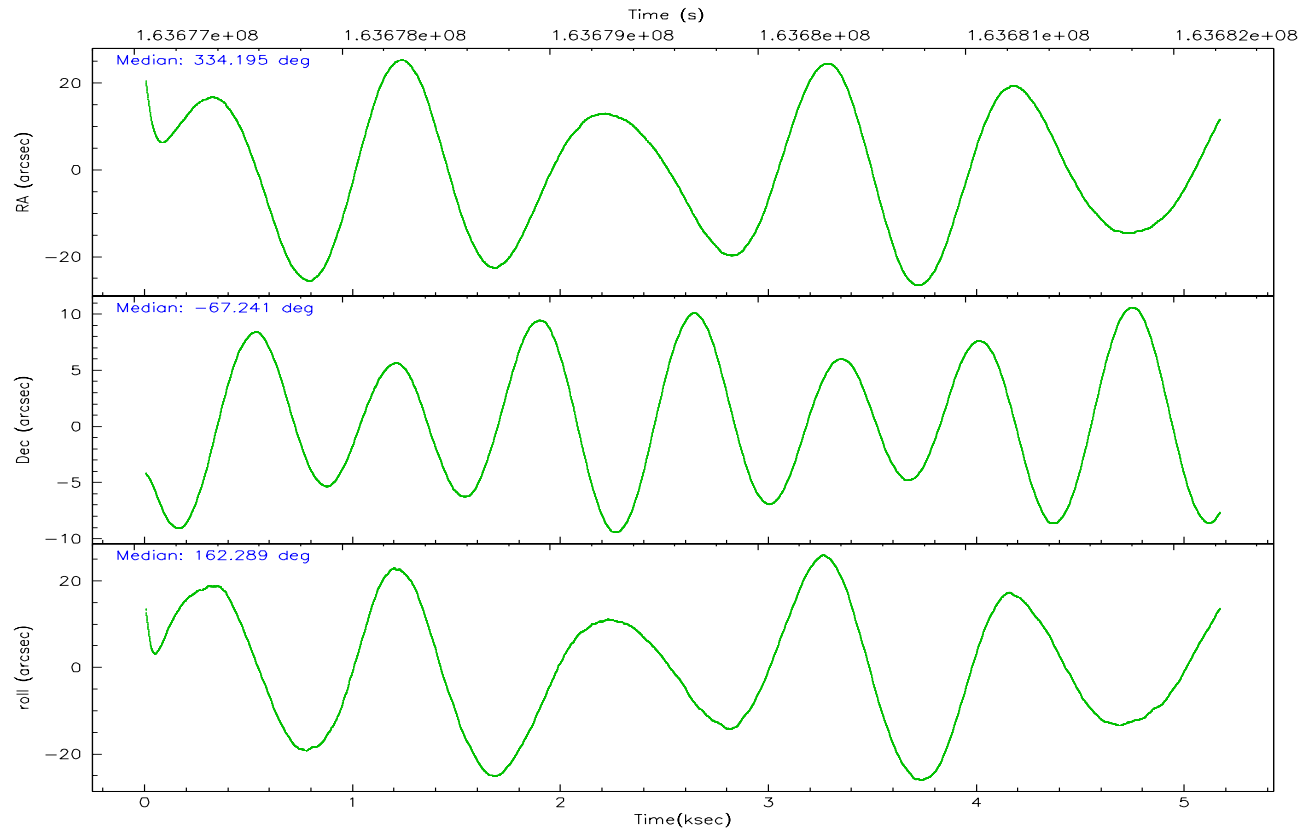
	ccd 2	ccd 3	ccd 5	ccd 6	ccd 7	ccd 8
grade 0 events	1718	1662	3324	1617	1042	2500
	5%	5%	6%	5%	2%	6%
grade 1 events	22	23	67	19	25	28
	0%	0%	0%	0%	0%	0%
grade 2 events	778	648	6554	727	3955	1705
	2%	2%	13%	2%	9%	4%
grade 3 events	410	333	456	380	868	795
	1%	1%	0%	1%	2%	2%
grade 4 events	351	338	457	350	846	778
	1%	1%	0%	1%	2%	2%
grade 5 events	1259	1332	2119	1353	2749	1762
	3%	4%	4%	4%	6%	4%
grade 6 events	602	554	11337	744	9442	1897
	1%	1%	23%	2%	22%	4%
grade 7 events	26576	25826	23471	26683	22658	29261
	83%	84%	49%	83%	54%	75%

2.2 Compared Parameters

Parameter	Planned	Actual	Parameter	Planned	Actual
Instrument	ACIS	ACIS	Obspar format version number	6	6
Detector	ACIS-235678	ACIS-235678	Obspar file type	PREDICTED	ACTUAL
Grating	NONE	NONE	Obspar update status	NONE	UPDATED
Data mode	FAINT	FAINT	On-chip summing requested	N	N
Observation mode	POINTING	POINTING	Subarray requested	NONE	NONE
Pointing RA	334.262692	334.1942455587865	Alternating exposures requested	N	N
Pointing Dec	-67.234699	-67.24097847088832	Primary exposure time	0.000000	3.2
Pointing Roll	162.199475	162.2929501381991			
SIM focus pos (mm)	-0.684267	-0.6828225247311905			
SIM defocus (mm)	0	0.001444936568705701			
SIM translation stage pos (mm)	-190.132523	-190.1400660498719			
SIM translation stage offset (mm)	0	0.00754346686406393			
Observation start time	163677230.184000	163676264.9277			
Observation start date	2003-03-10T09:52:46	2003-03-10T09:37:44			
Observation end time	163682230.184000	163683095.52799			
Observation end date	2003-03-10T11:16:06	2003-03-10T11:31:35			
Read mode	TIMED	TIMED			

2.3 Aspect



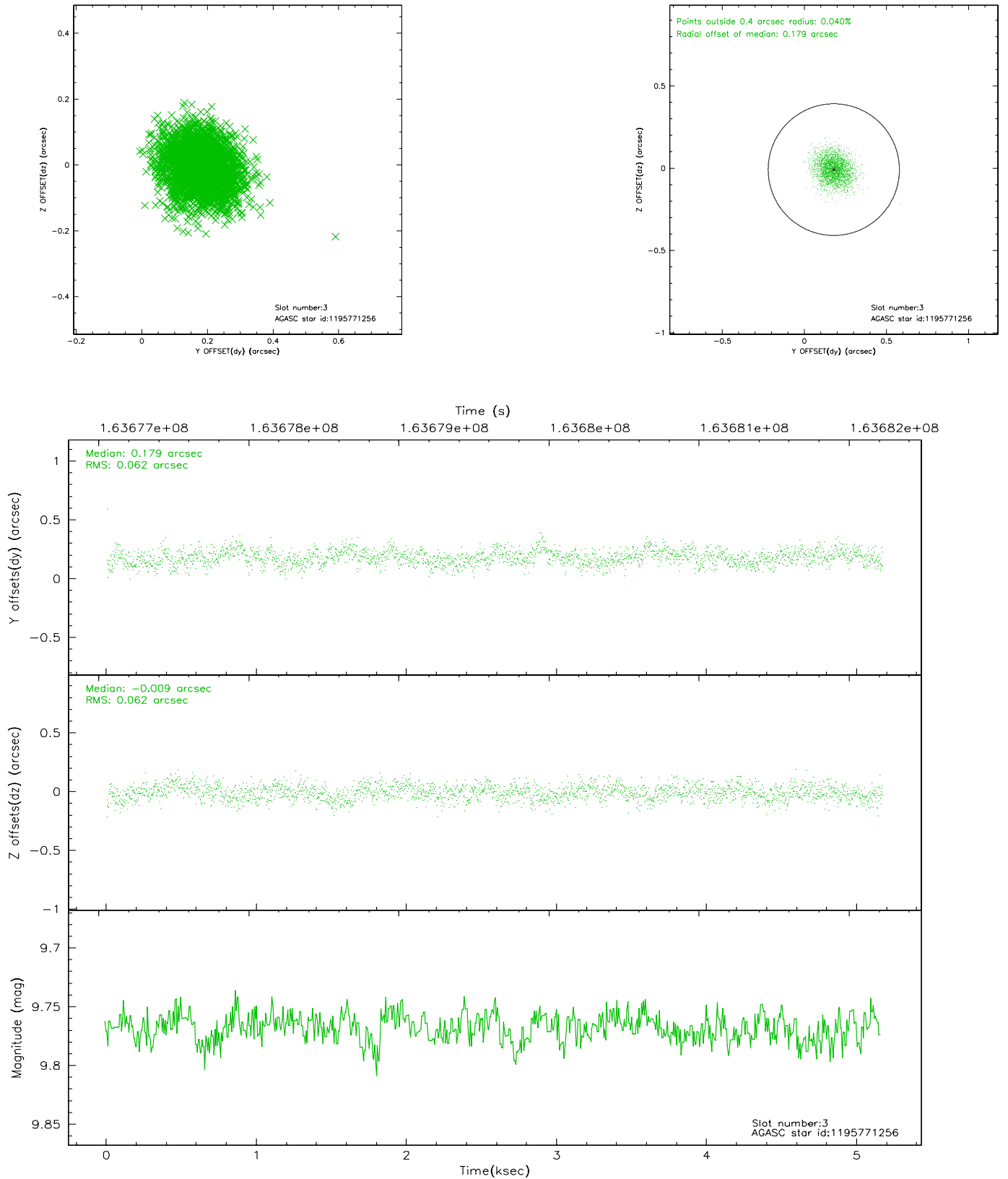


Slot Statistics

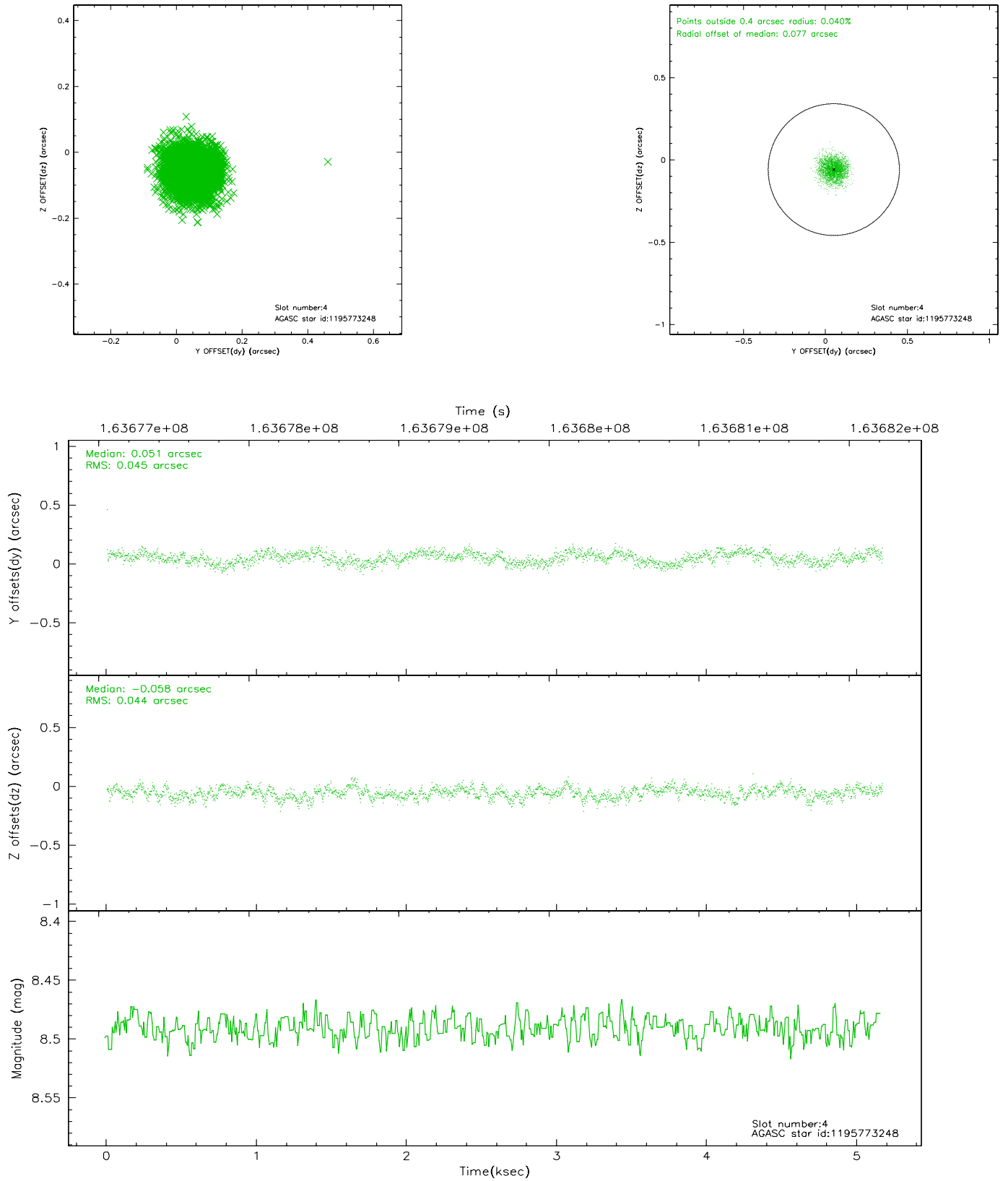
slot	status	id	mag	n_pts	med_dy	med_dz	dr1	dr2	ra	dec	mean_y	mean_z
0	FID	ACIS-S-2	7.11	1261	-0.033	0.001	0.007	0.013	0.000000	0.000000	-754.55	-1728.59
1	FID	ACIS-S-4	7.20	1261	-0.031	0.016	0.005	0.008	0.000000	0.000000	2158.20	178.69
2	FID	ACIS-S-5	7.24	1261	0.033	-0.008	0.007	0.011	0.000000	0.000000	-1805.81	173.67
3	GUIDE	1195771256	9.77	2520	0.179	-0.009	0.094	0.150	335.697094	-67.039322	-1709.29	-1263.84
4	GUIDE	1195773248	8.49	2522	0.051	-0.058	0.068	0.105	334.476070	-67.192157	-236.76	-237.23
5	GUIDE	1195781040	9.52	2519	-0.033	0.071	0.104	0.168	333.549389	-66.448874	1840.79	-2374.57
6	GUIDE	1195783176	7.27	2522	-0.067	0.004	0.050	0.085	333.406348	-66.782155	1654.13	-1172.82
7	GUIDE	1195783088	8.94	2520	-0.129	-0.006	0.071	0.115	333.405234	-66.593006	1872.61	-1817.25

2.4 Star Slots

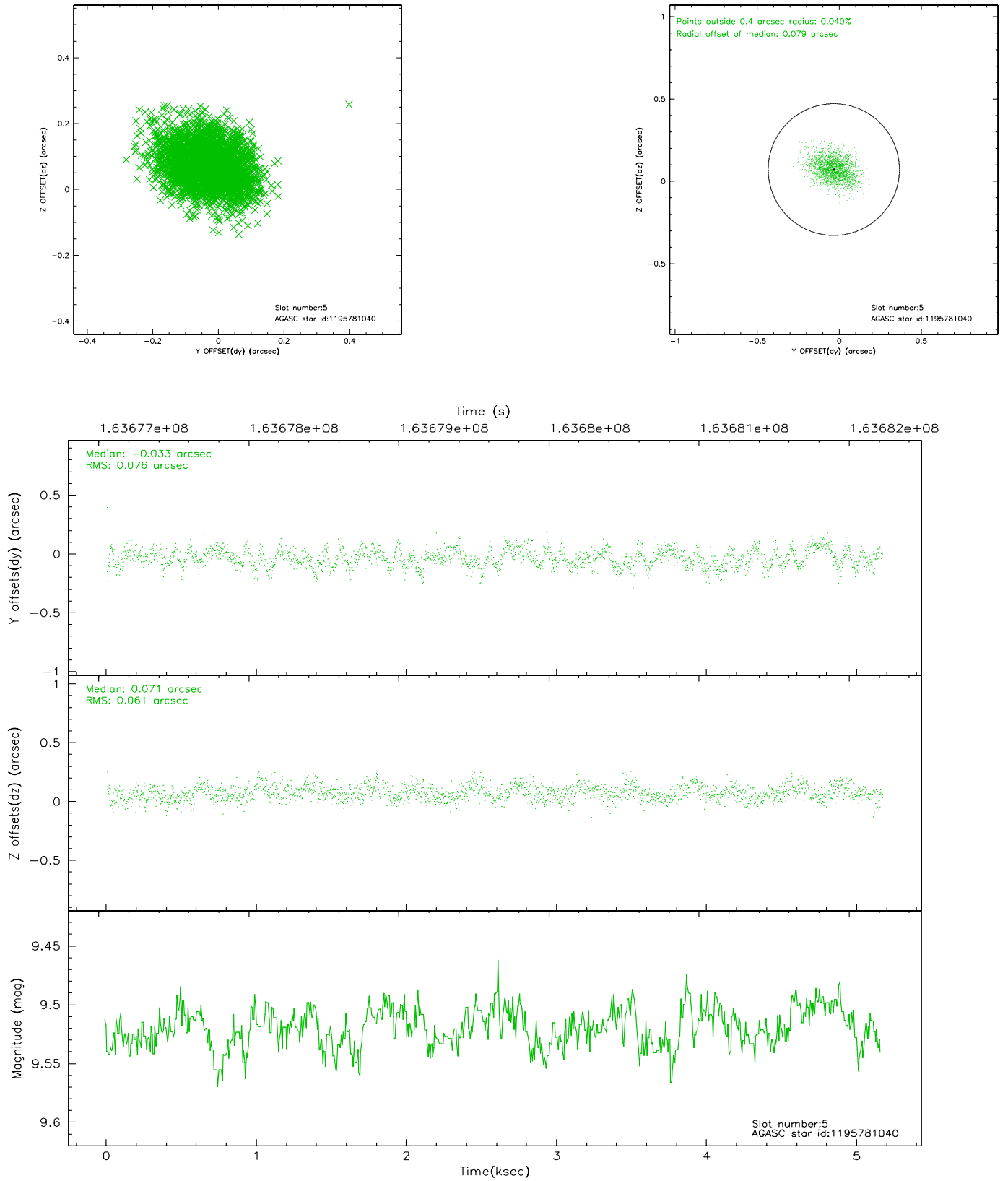
2.4.1 Slot 3



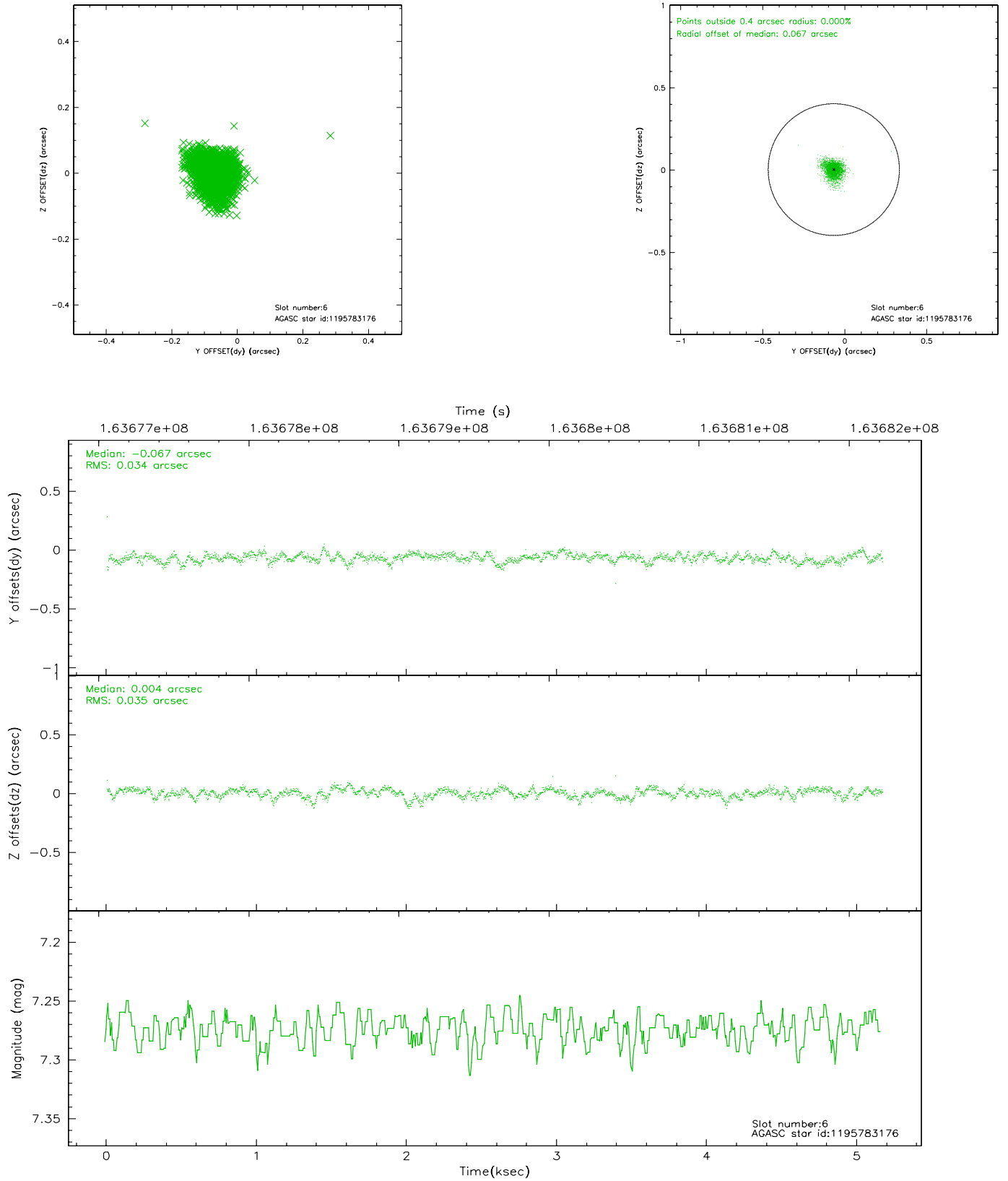
2.4.2 Slot 4



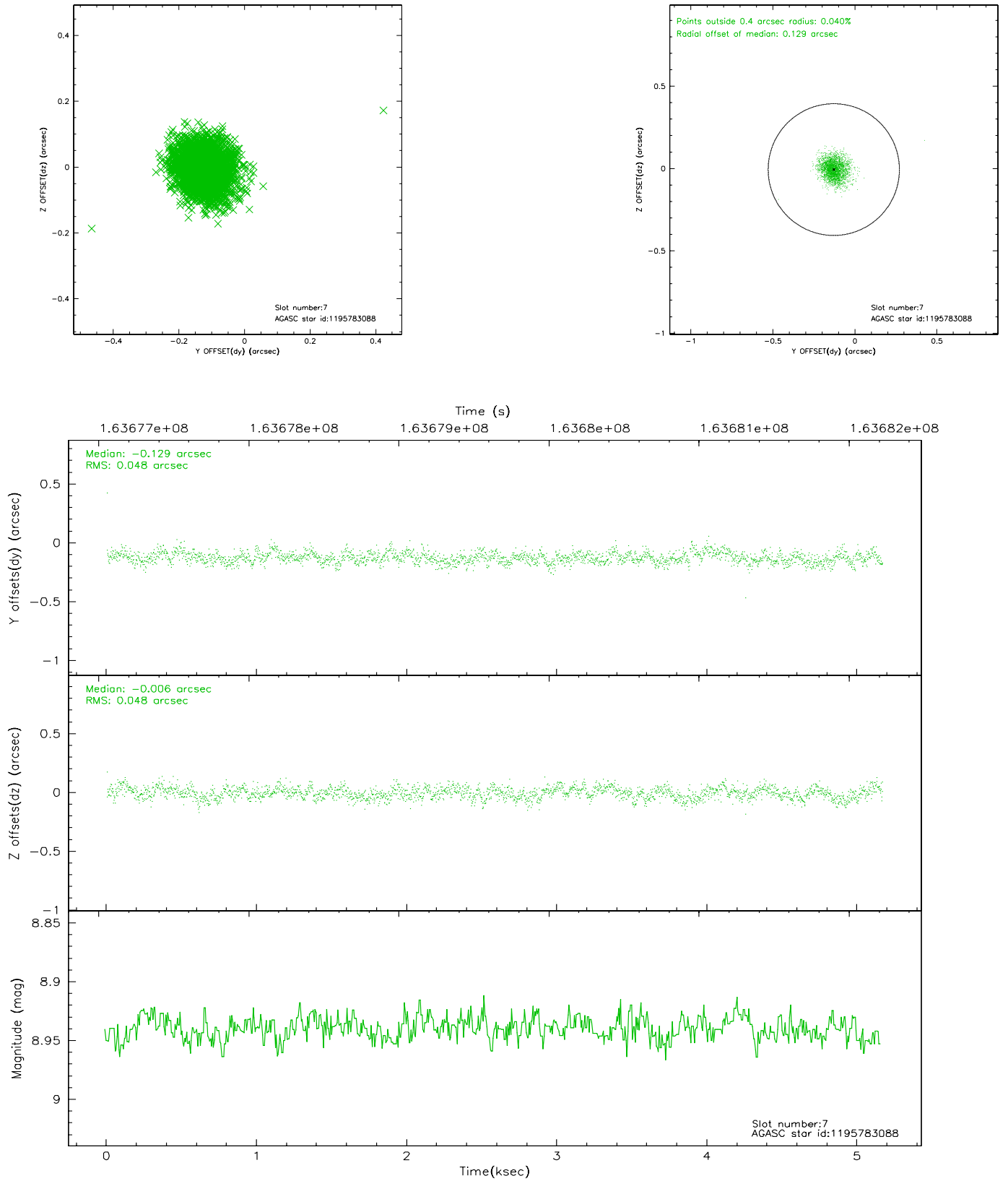
2.4.3 Slot 5



2.4.4 Slot 6

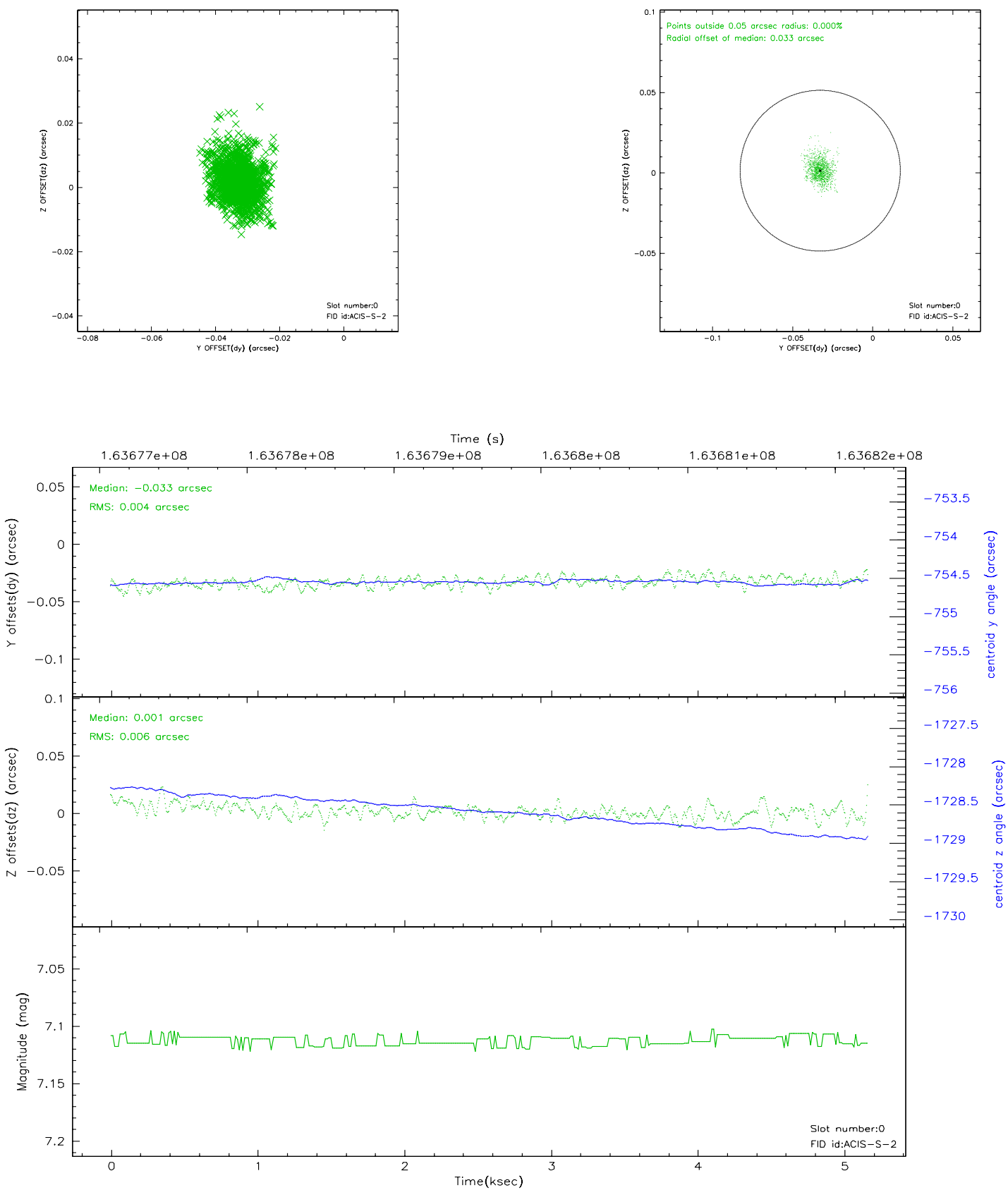


2.4.5 Slot 7

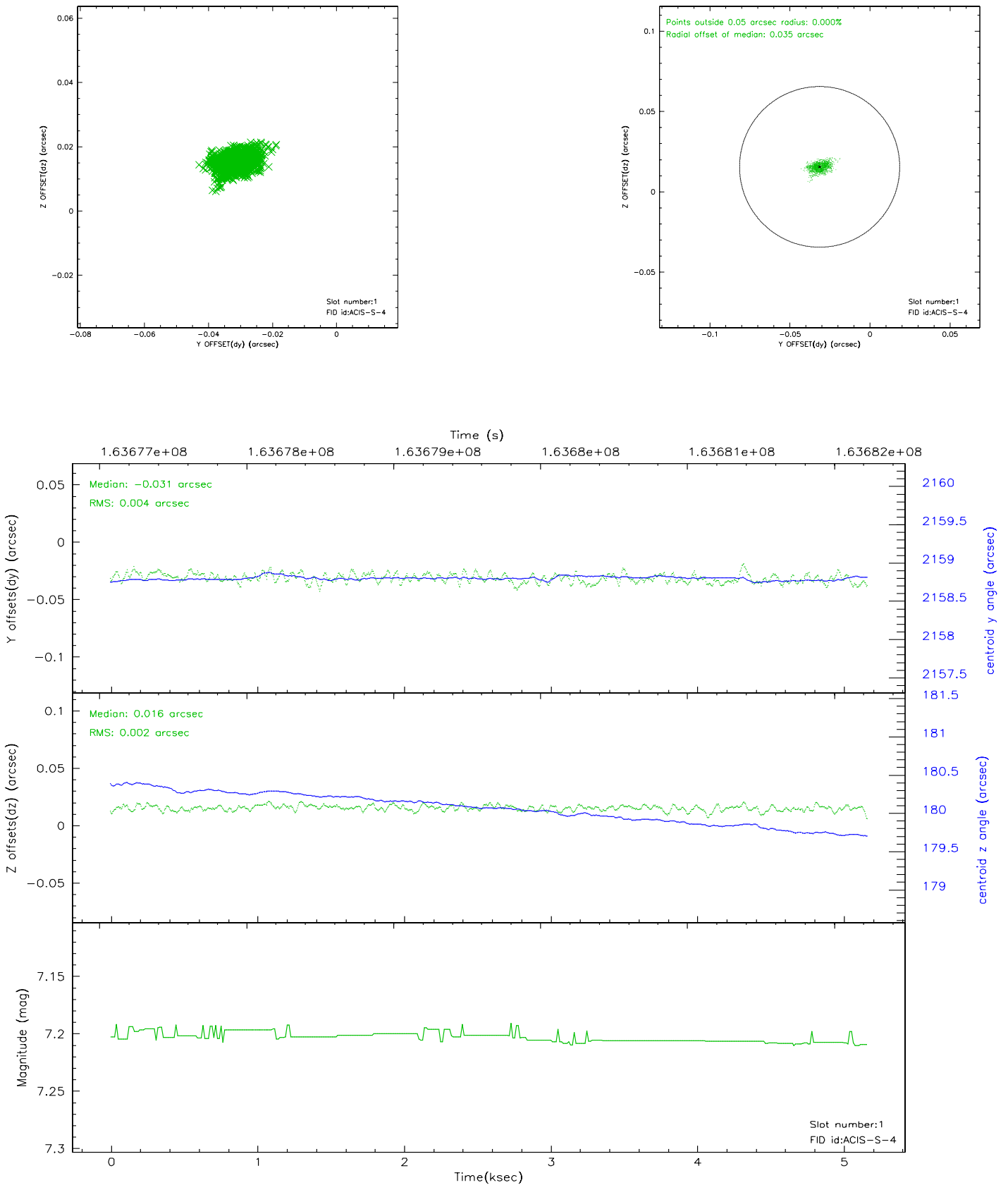


2.5 FID Slots

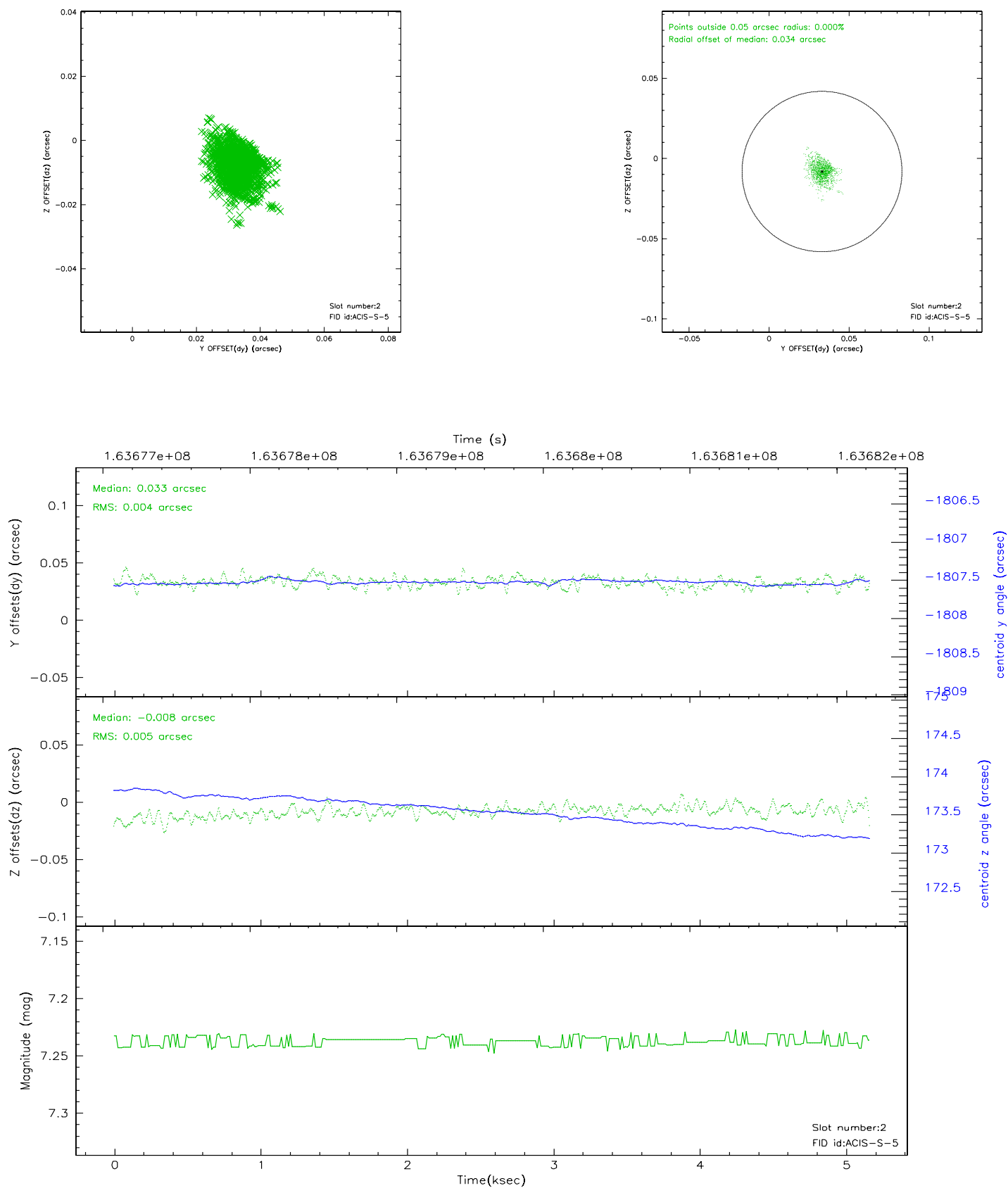
2.5.1 Slot 0



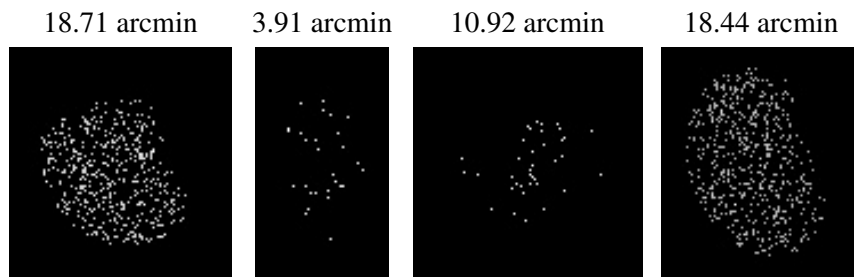
2.5.2 Slot 1



2.5.3 Slot 2



3 Point Sources



A Summary

A.1 Status

V&V Scientist	Beth Sundheim
V&V Date (YYYY-MM-DD)	2006.07.23
V&V Edition	1
V&V Disposition and Status	OK
V&V Charge Time	4.959

A.2 Comments