

# V&V Reference Report

## L2 ASCDS Version : 7.6.8

Observation 4003 - L2 Version 001  
Chandra X-Ray Center

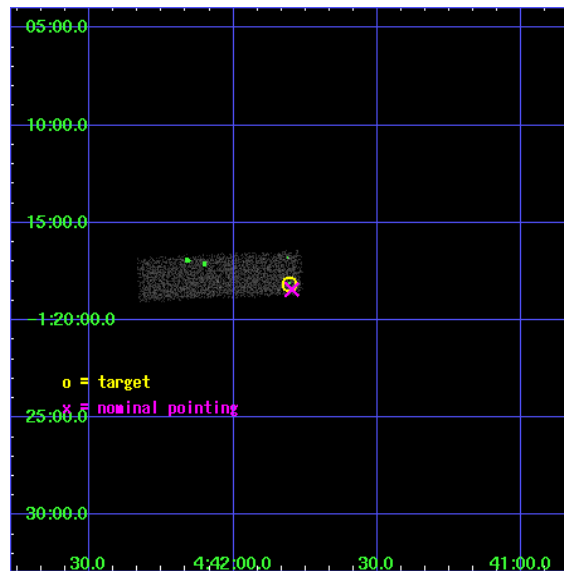
L2 Processing Date : Jul 25 2006

## Contents

<b>1</b>	<b>Front</b>	<b>2</b>
<b>2</b>	<b>OBI</b>	<b>3</b>
2.1	OBI . . . . .	3
2.1.1	Images . . . . .	3
2.1.2	Bias . . . . .	3
2.1.3	Parameters . . . . .	4
2.1.4	Events . . . . .	4
2.2	Compared Parameters . . . . .	5
2.3	Aspect . . . . .	6
2.4	Star Slots . . . . .	9
2.4.1	Slot 3 . . . . .	9
2.4.2	Slot 4 . . . . .	10
2.4.3	Slot 5 . . . . .	11
2.4.4	Slot 6 . . . . .	12
2.4.5	Slot 7 . . . . .	13
2.5	FID Slots . . . . .	14
2.5.1	Slot 0 . . . . .	14
2.5.2	Slot 1 . . . . .	15
2.5.3	Slot 2 . . . . .	16
<b>3</b>	<b>Point Sources</b>	<b>17</b>
<b>A</b>	<b>Summary</b>	<b>18</b>
A.1	Status . . . . .	18
A.2	Comments . . . . .	18

# 1 Front

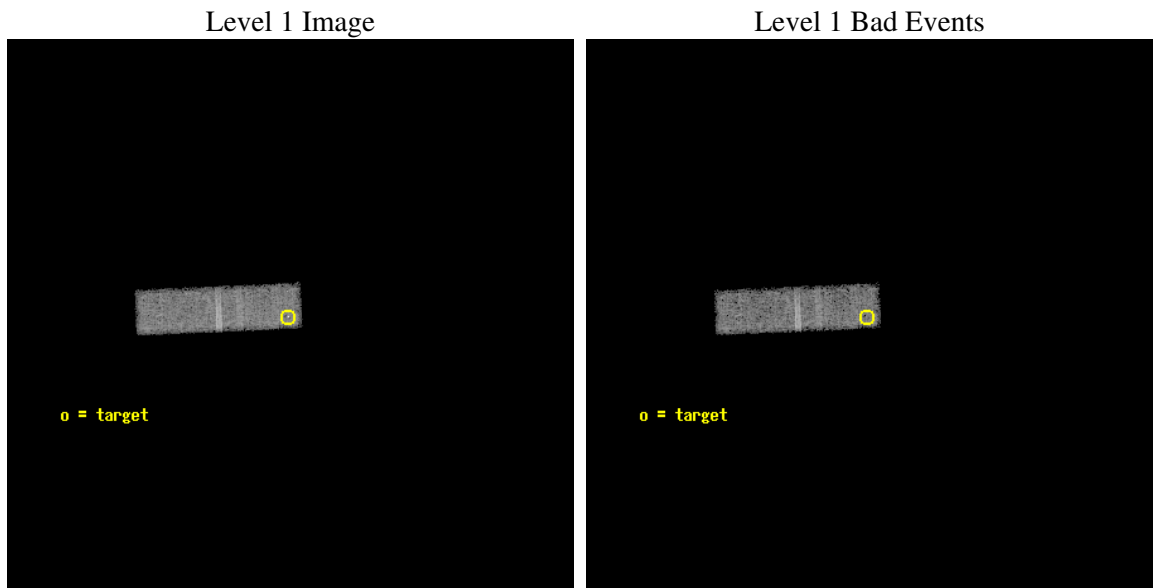
seq_num	700682
obs_id	4003
title	THE NATURE OF THE ``COMPOSITE" SEYFERT/STAR-FORMING GALAXIES
observer	Dr. Anna Wolter
object	IRAS04392-0123
dtcycle	0
cycle	P
ra_targ	70.45125
dec_targ	-1.302944
ra_nom	70.449270577505
dec_nom	-1.3071241336183
roll_nom	267.65276452557
revision	3
ontime	24798.400369525
liveltime	23588.319575312
ontime3	24798.400369525
l2events	5395



## 2 OBI

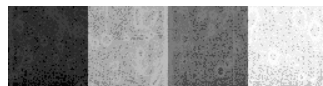
### 2.1 OBI

#### 2.1.1 Images



#### 2.1.2 Bias

Chip 3



### 2.1.3 Parameters

obi_num	0
ascdsver	7.6.8
caldbver	3.2.2
date	2006-07-25T23:36:44
revision	3

sched_exp_time	24200.000000
ontime	25030.723684996
ontime3	25030.723684996
l1events	54416

### 2.1.4 Events

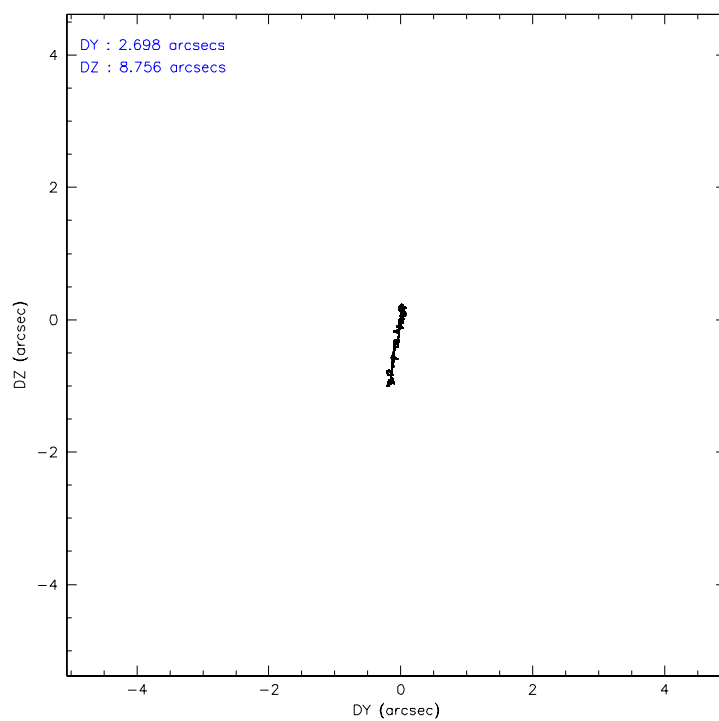
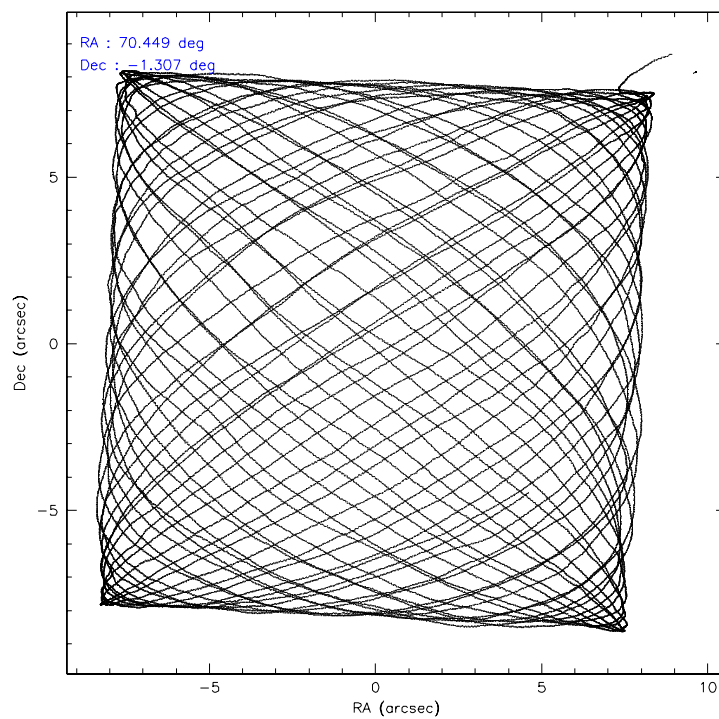
	<b>ccd 3</b>
level 1 events	54416
rejected events	48124
rejected %	88%

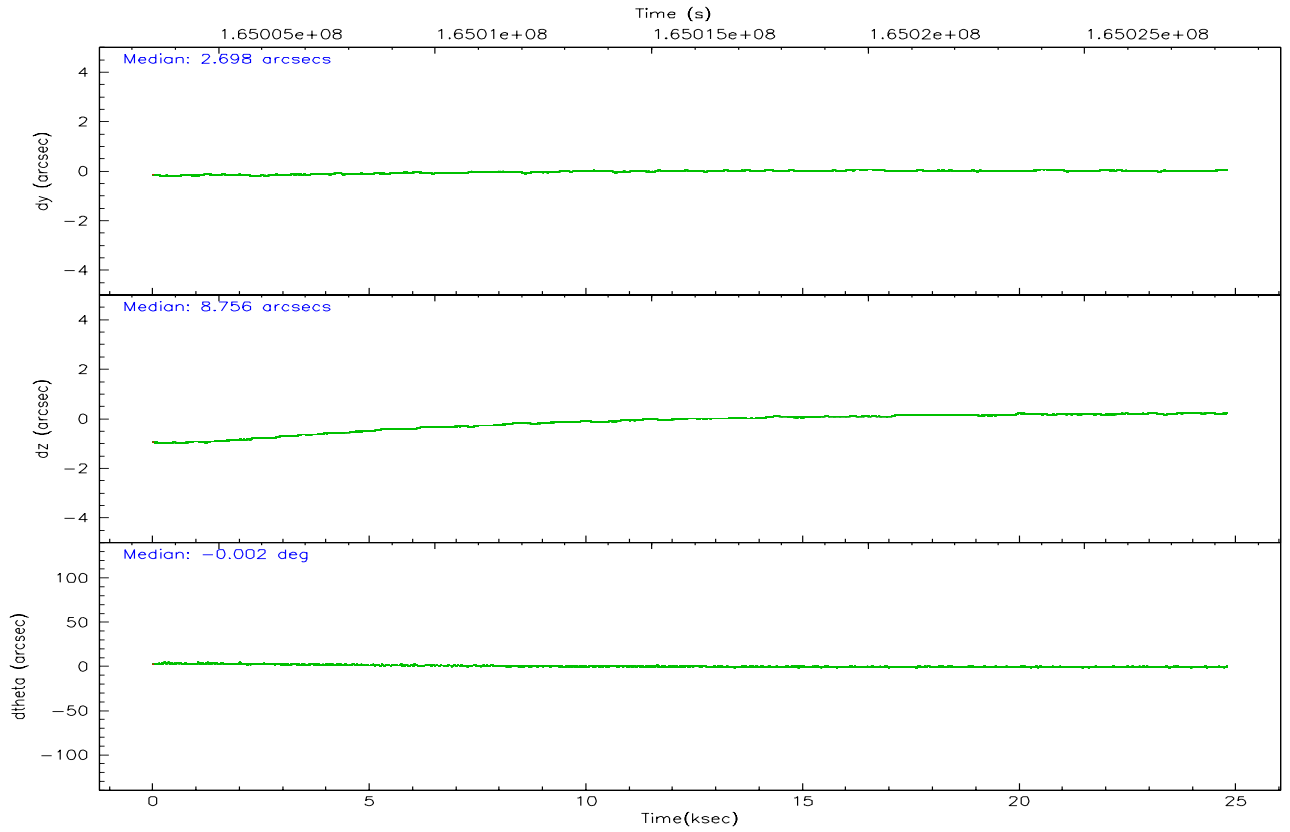
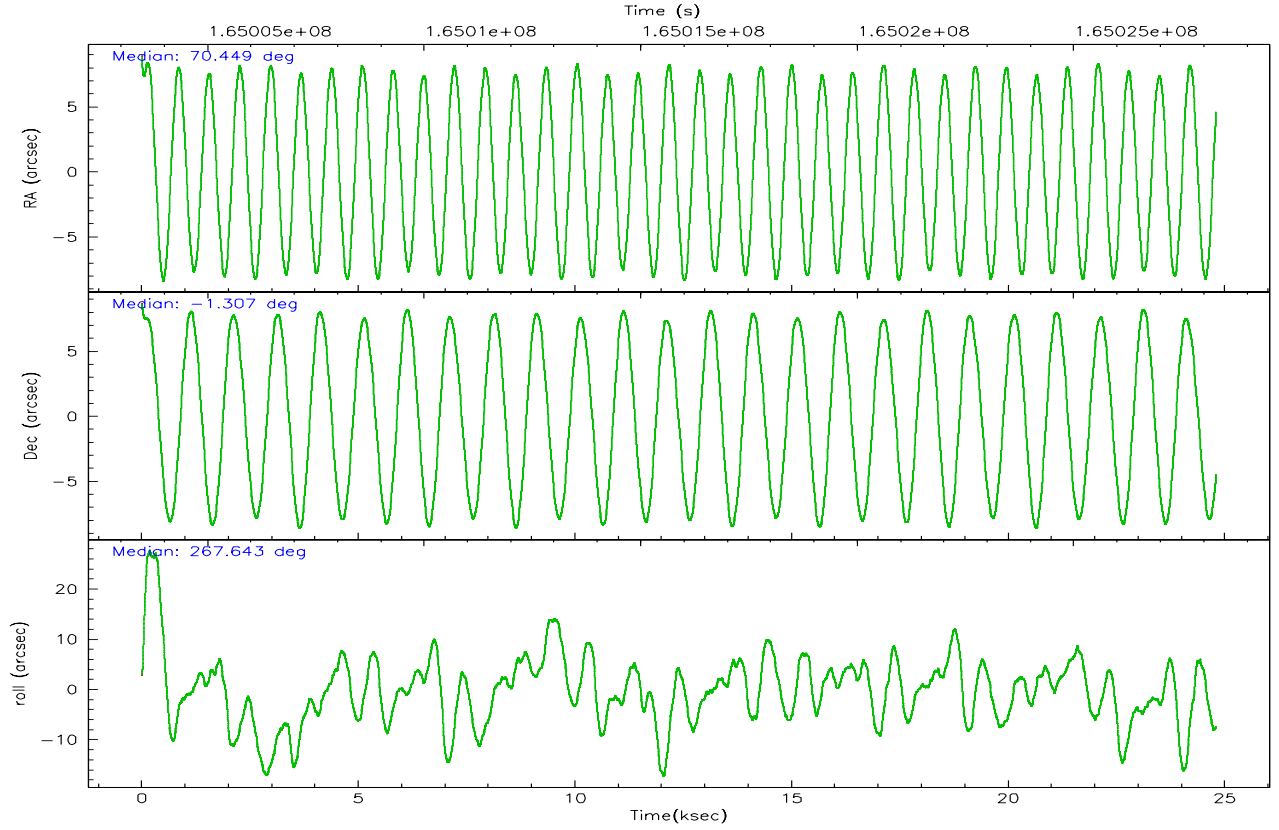
	<b>ccd 3</b>
grade 0 events	2615
	4%
grade 1 events	30
	0%
grade 2 events	944
	1%
grade 3 events	954
	1%
grade 4 events	913
	1%
grade 5 events	1960
	3%
grade 6 events	930
	1%
grade 7 events	46070
	84%

## 2.2 Compared Parameters

Parameter	Planned	Actual	Parameter	Planned	Actual
Instrument	ACIS	ACIS	Obspar format version number	6	6
Detector	ACIS-3	ACIS-3	Obspar file type	PREDICTED	ACTUAL
Grating	NONE	NONE	Obspar update status	NONE	UPDATED
Data mode	FAINT	FAINT	On-chip summing requested	N	N
Observation mode	POINTING	POINTING	Subarray requested	1/4	1/4
Pointing RA	70.436455	70.44927057750544	Subarray start row	0	769
Pointing Dec	-1.282933	-1.307124133618301	Subarray row count	1024	256
Pointing Roll	267.443795	267.6527645255733	Alternating exposures requested	N	N
SIM focus pos (mm)	-0.782348	-0.7809083437167272	Primary exposure time	0.000000	0.8
SIM defocus (mm)	0	0.001439871863259334			
SIM translation stage pos (mm)	-233.592463	-233.5874344608287			
SIM translation stage offset (mm)	0	-0.005018542100998502			
Observation start time	165004095.184000	165002929.1461			
Observation start date	2003-03-25T18:27:11	2003-03-25T18:08:49			
Observation end time	165028295.184000	165029134.29721			
Observation end date	2003-03-26T01:10:31	2003-03-26T01:25:34			
Read mode	TIMED	TIMED			

## 2.3 Aspect



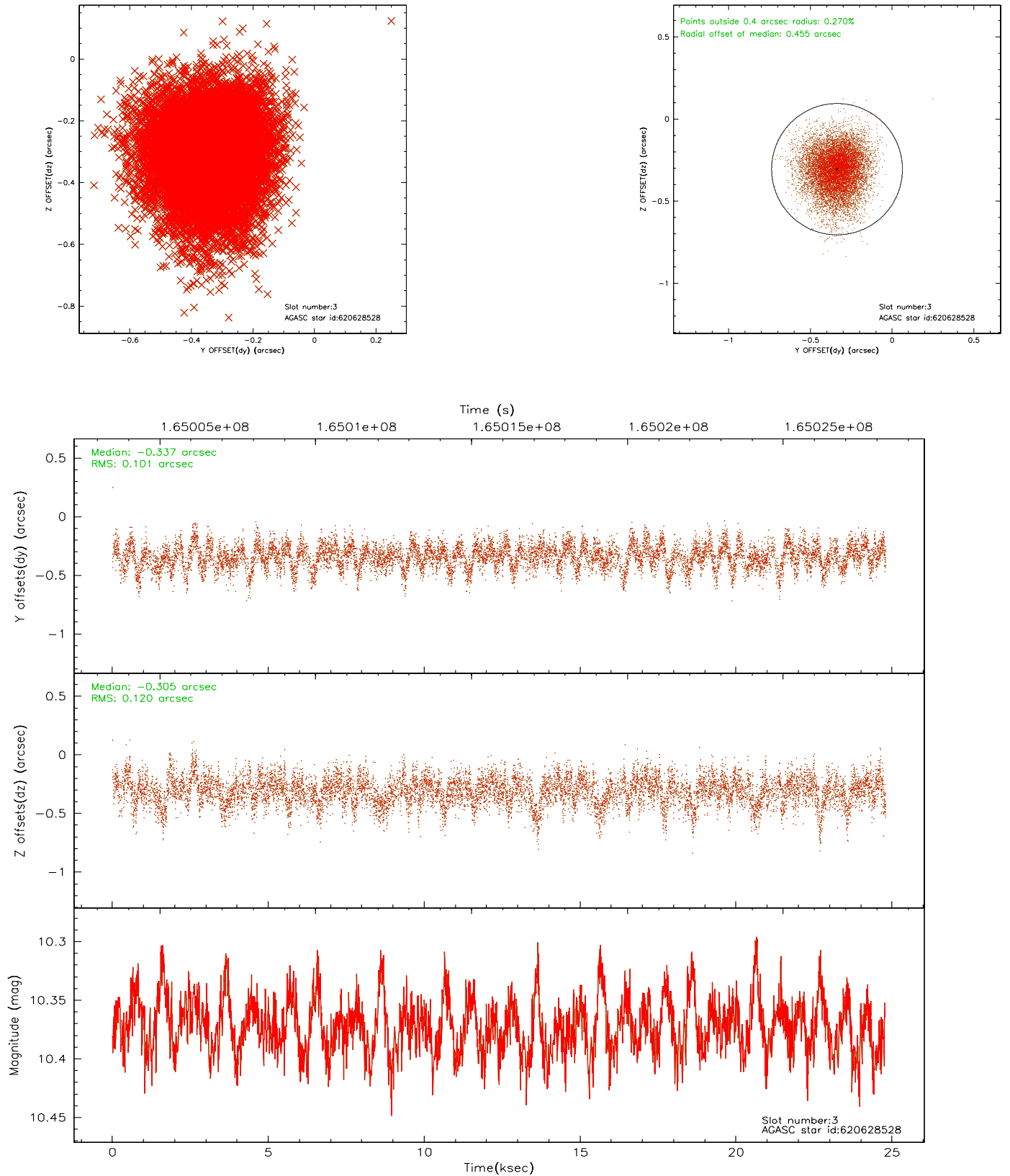


### Slot Statistics

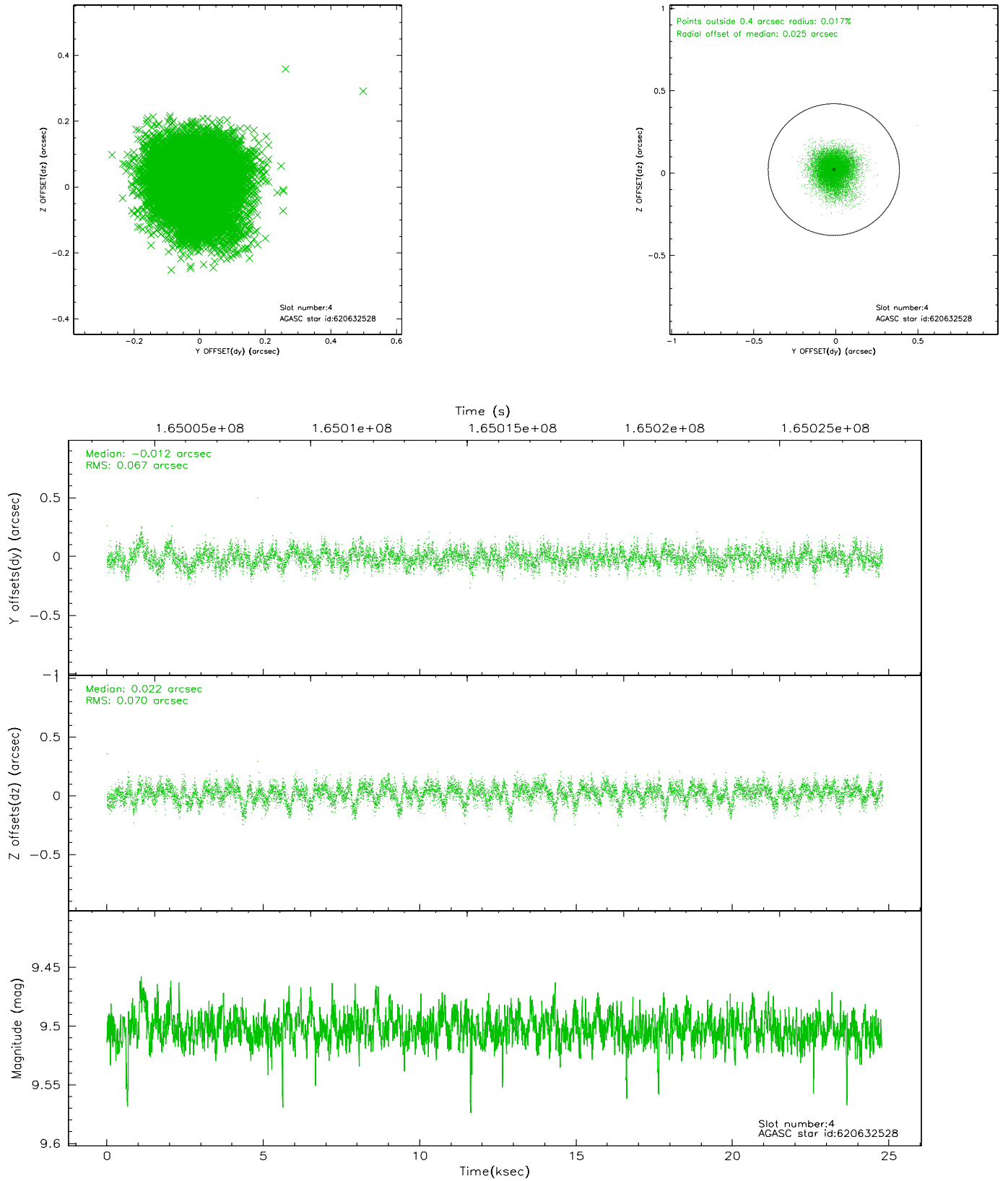
slot	status	id	mag	n_pts	med_dy	med_dz	dr1	dr2	ra	dec	mean_y	mean_z
0	FID	ACIS-I-1	7.24	6049	-0.047	0.089	0.011	0.032	0.000000	0.000000	937.09	-831.96
1	FID	ACIS-I-5	7.23	6048	-0.038	0.019	0.009	0.020	0.000000	0.000000	-1810.95	1065.40
2	FID	ACIS-I-6	7.26	6049	-0.006	-0.038	0.010	0.020	0.000000	0.000000	402.54	1709.99
3	BAD	620628528	10.37	11111	-0.337	-0.305	0.168	0.274	69.820993	-0.850639	-1455.38	-2283.04
4	GUIDE	620632528	9.50	12080	-0.012	0.022	0.102	0.168	70.573597	-1.016236	-980.95	450.18
5	GUIDE	620634840	9.90	11817	0.187	0.057	0.168	0.281	70.068280	-1.456025	682.43	-1295.44
6	GUIDE	620635144	8.15	12097	-0.080	0.150	0.072	0.111	70.877923	-1.111347	-687.75	1559.96
7	GUIDE	620636208	9.18	12075	0.228	0.077	0.199	0.280	70.536222	-1.664967	1358.49	420.66

## 2.4 Star Slots

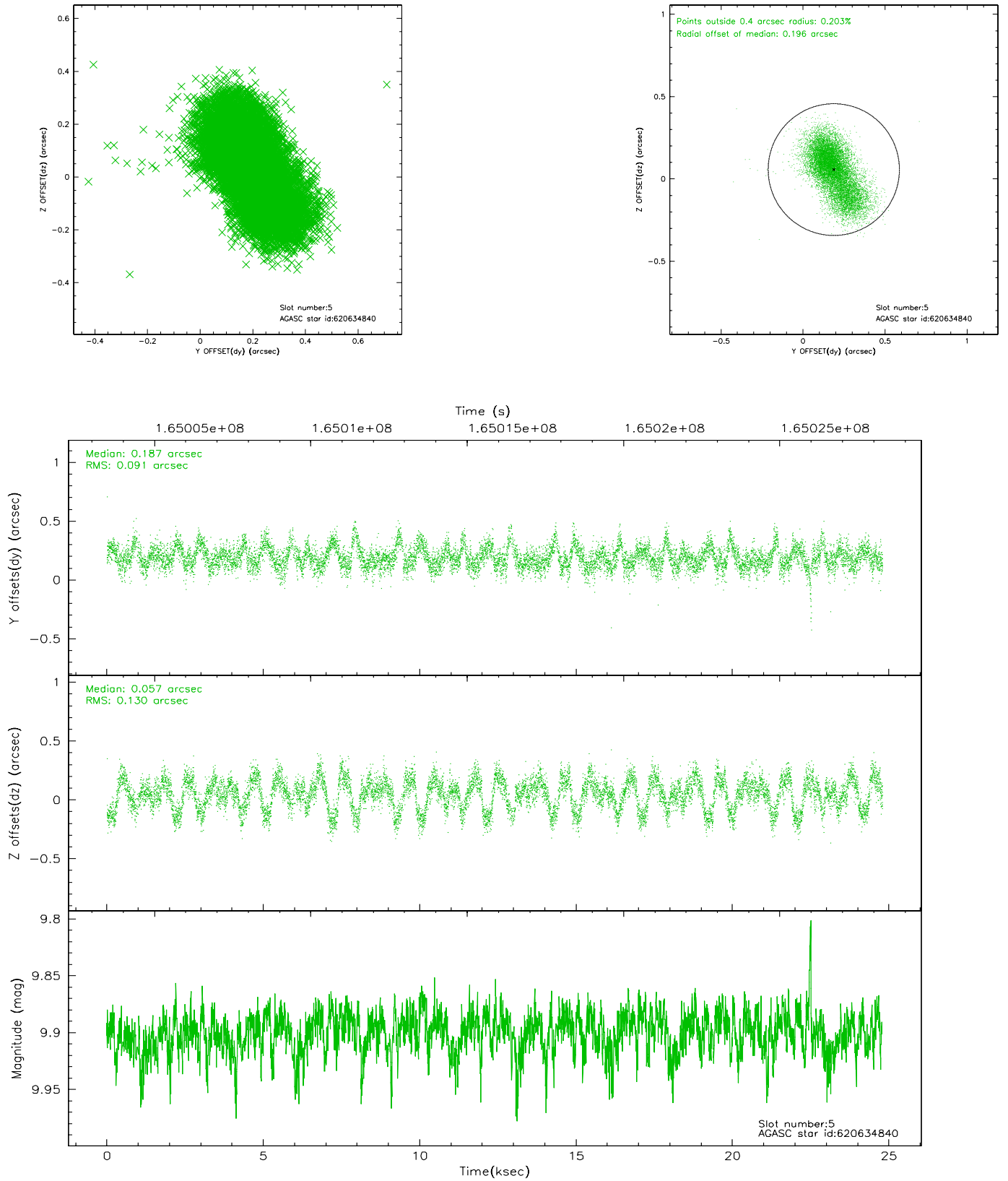
### 2.4.1 Slot 3



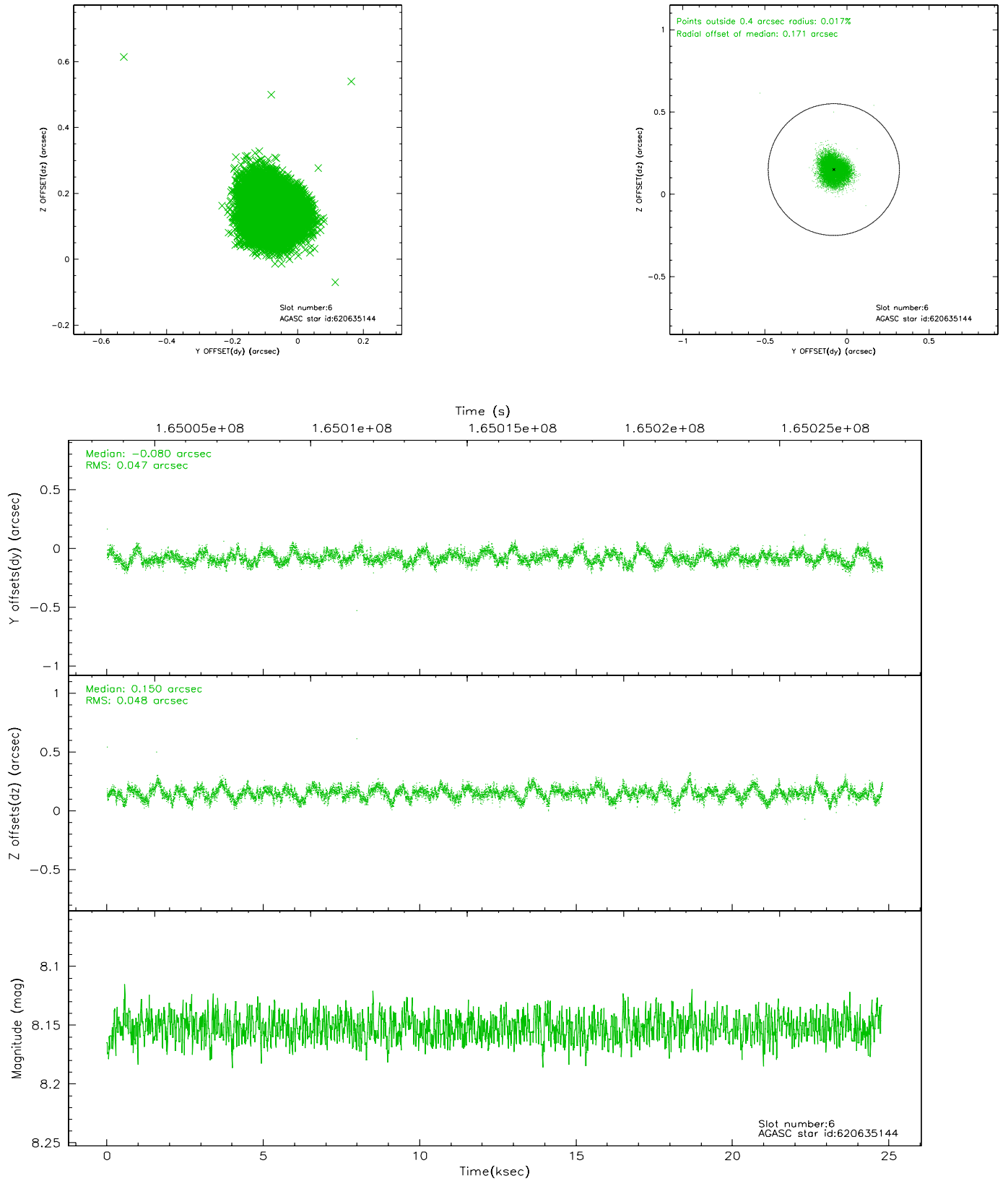
## 2.4.2 Slot 4



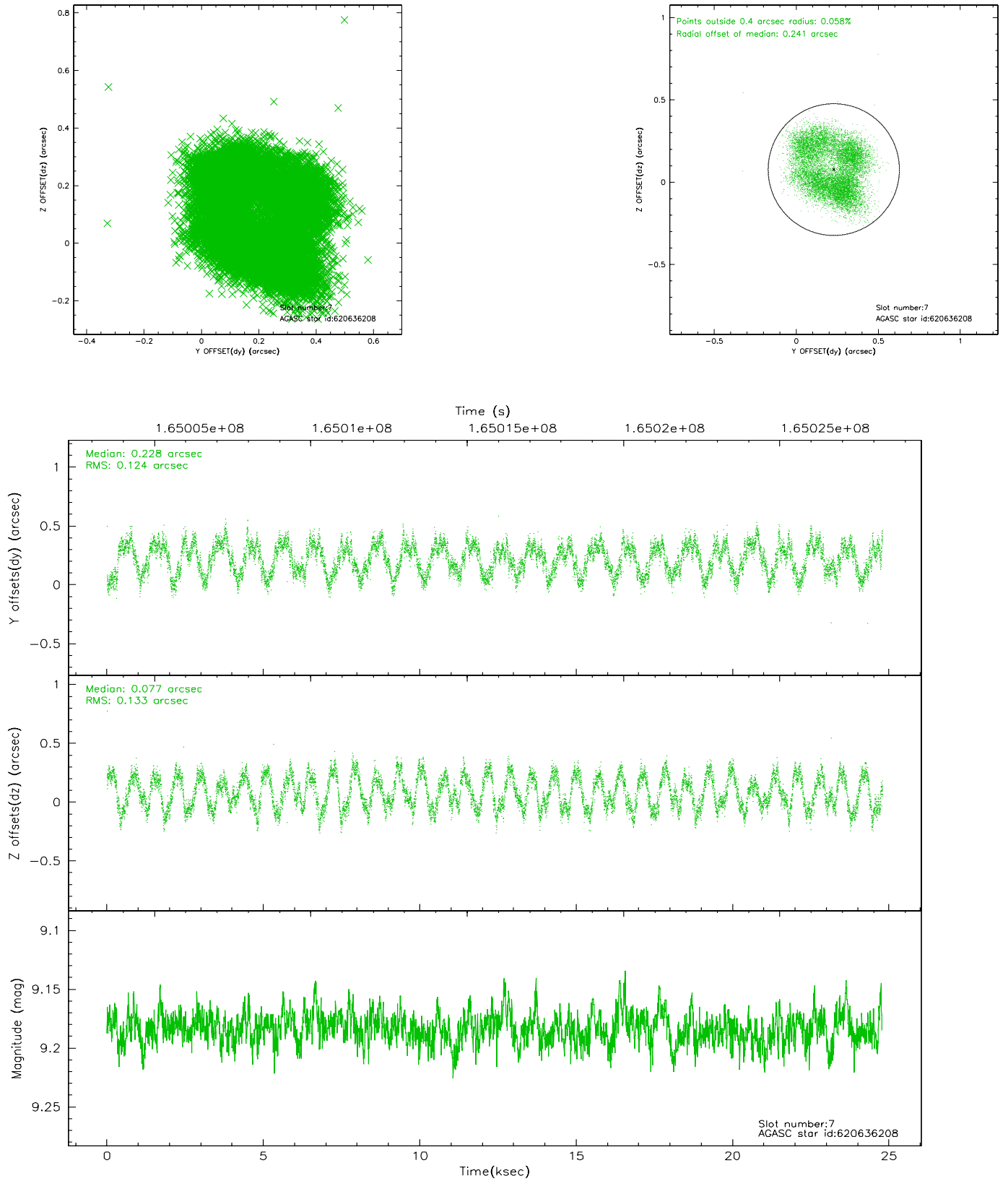
### 2.4.3 Slot 5



## 2.4.4 Slot 6

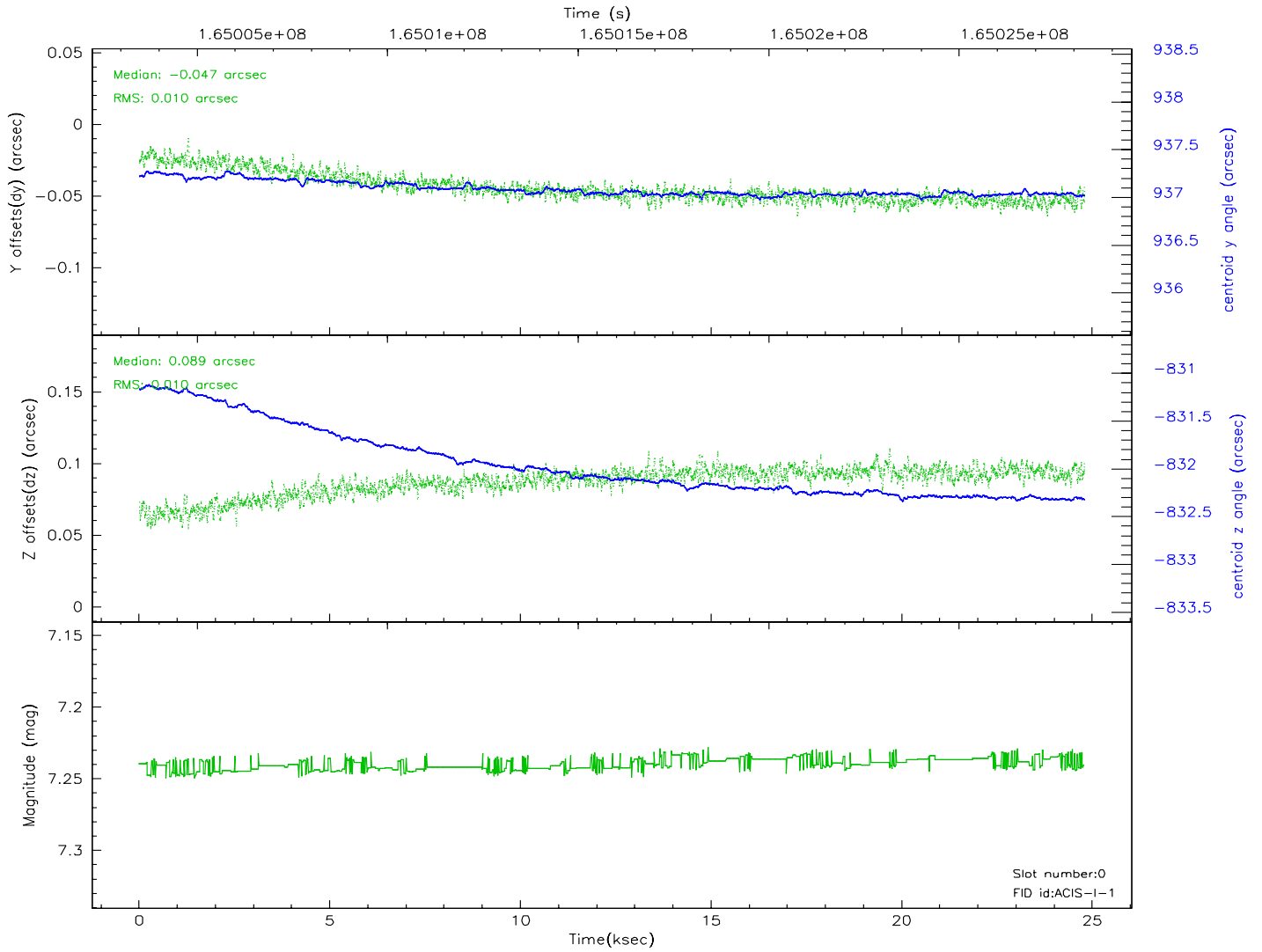
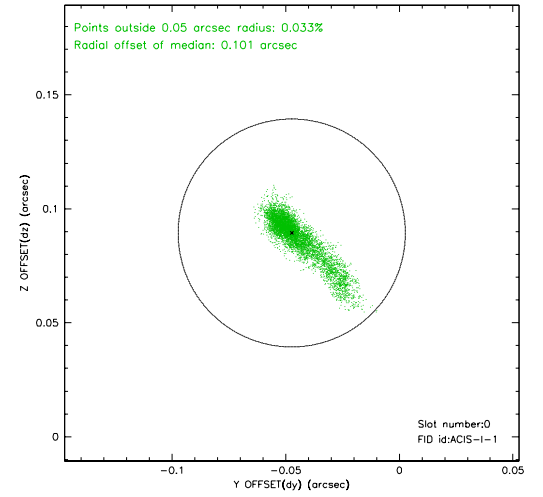
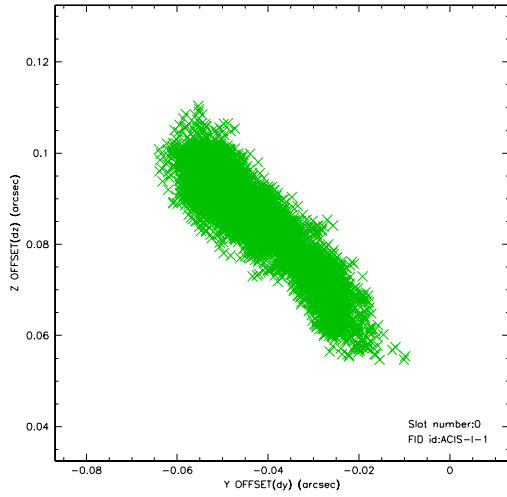


## 2.4.5 Slot 7

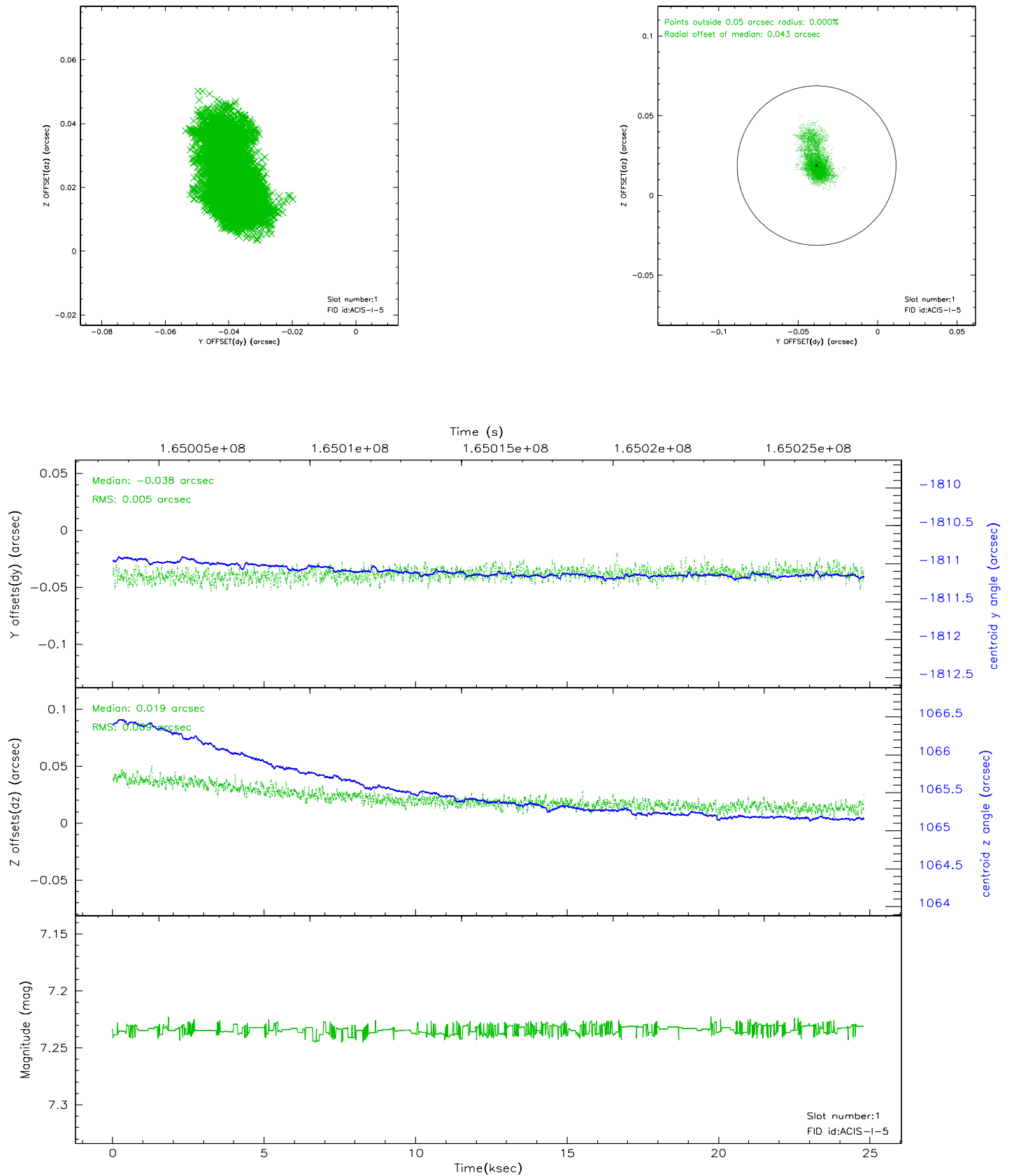


## 2.5 FID Slots

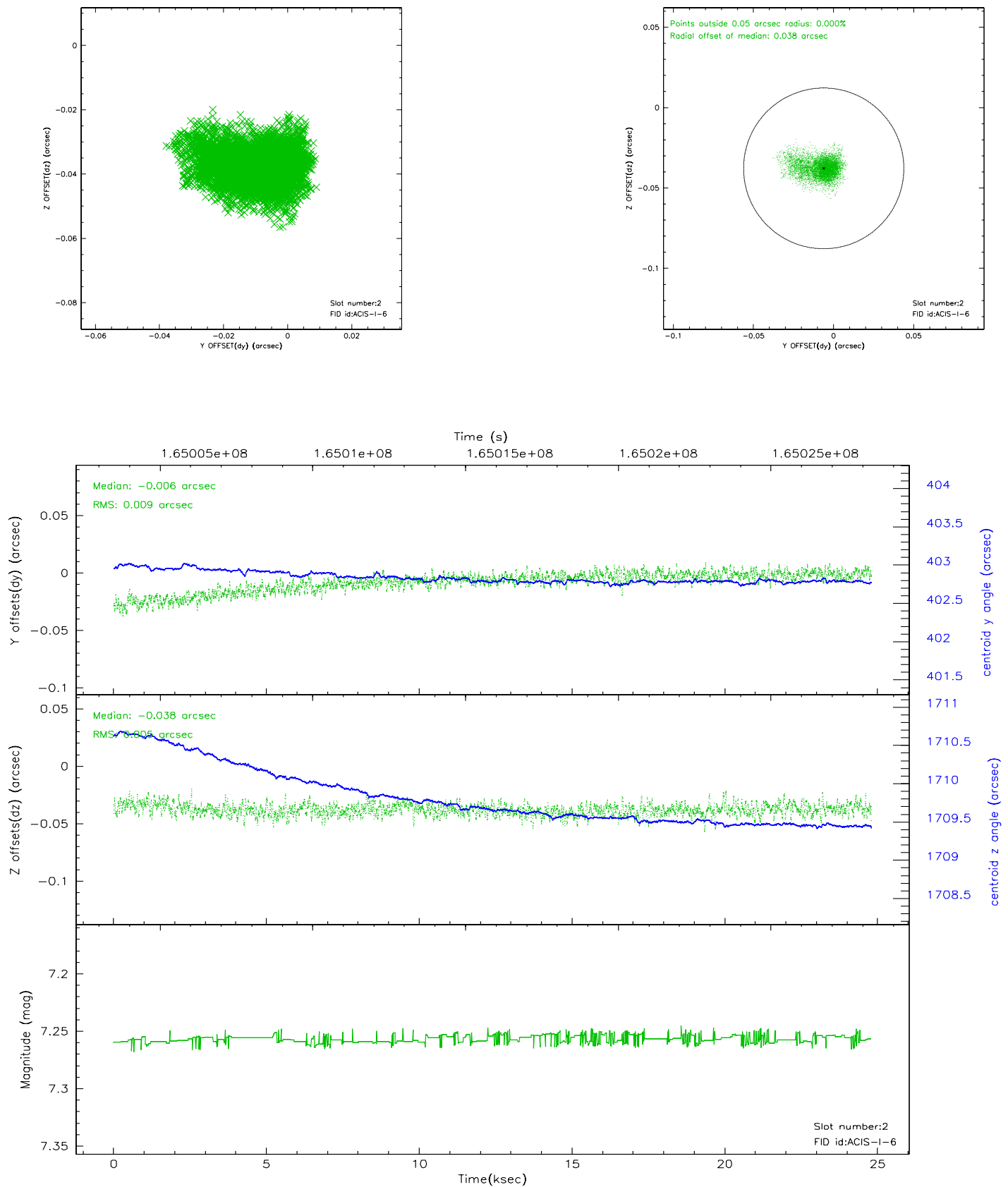
### 2.5.1 Slot 0



## 2.5.2 Slot 1



### 2.5.3 Slot 2

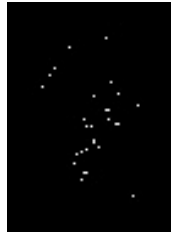


### 3 Point Sources

5.62 arcmin



4.70 arcmin



## A Summary

### A.1 Status

V&V Scientist	Beth Sundheim
V&V Date (YYYY-MM-DD)	2006.07.26
V&V Edition	1
V&V Disposition and Status	OK
V&V Charge Time	24.796

### A.2 Comments

Slot 3 was excluded from aspect solution.