

V&V Reference Report

L2 ASCDS Version : 8.4.5

Observation 3893 - L2 Version 3
Chandra X-Ray Center

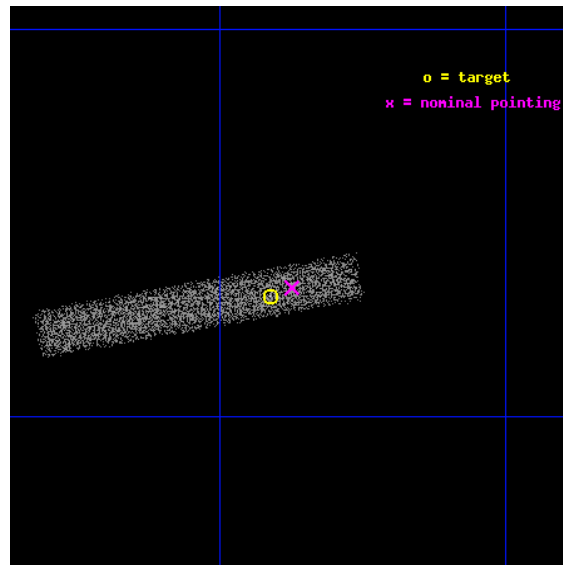
L2 Processing Date : Oct 31 2012

Contents

1	Front	2
2	OBI	3
2.1	OBI	3
2.1.1	Images	3
2.1.2	Bias	3
2.1.3	Parameters	4
2.1.4	Events	4
2.2	Compared Parameters	5
2.3	Aspect	6
2.4	Star Slots	9
2.4.1	Slot 3	9
2.4.2	Slot 4	10
2.4.3	Slot 5	11
2.4.4	Slot 6	12
2.4.5	Slot 7	13
2.5	FID Slots	14
2.5.1	Slot 0	14
2.5.2	Slot 1	15
2.5.3	Slot 2	16
A	Summary	17
A.1	Status	17
A.2	Comments	17

1 Front

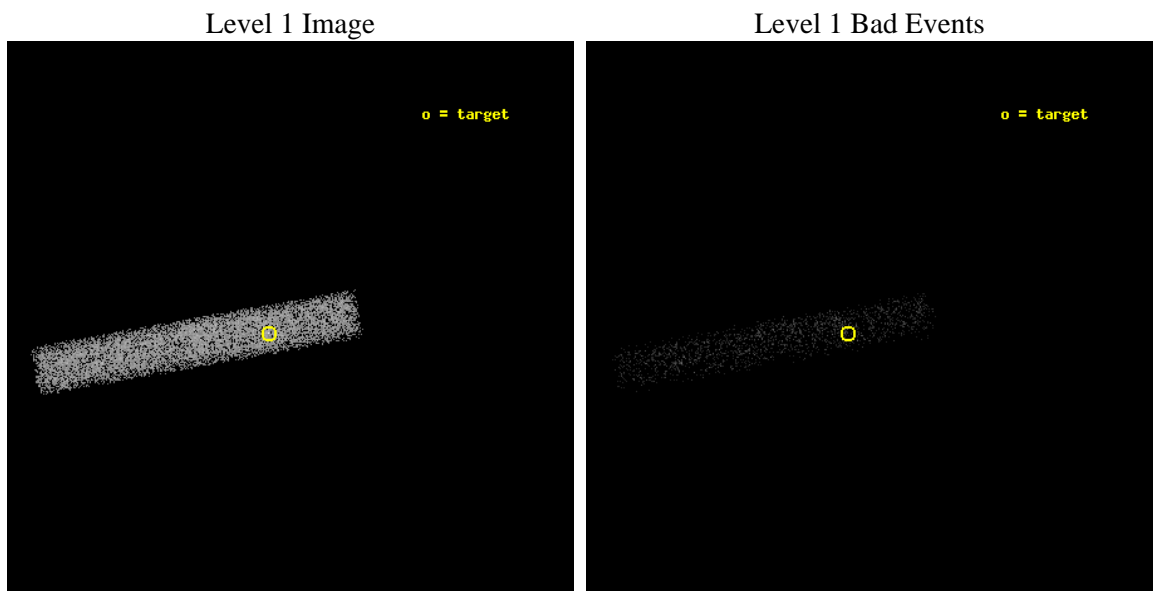
seq_num	500372	Sequence number
obs_id	3893	Observation id
title	IS AX J1845-0258 AN ANOMALOUS X-RAY PULSAR?	Proposal title
observer	Dr. Victoria Kaspi	Principal investigator
object	AX J1845-0258	Source name
dtcycle	0	
cycle	P	events from which exps? Prim/Second/Both
ra_targ	281.2275	Observer's specified target RA [deg]
dec_targ	-2.948056	Observer's specified target Dec [deg]
ra_nom	281.21840723468	Nominal RA [deg]
dec_nom	-2.9447047836159	Nominal Dec [deg]
roll_nom	169.88754704457	Nominal Roll [deg]
revision	3	Processing version of data
ontime	12857.200191557	Sum of GTIs [s]
livetime	11660.801915071	Livetime [s]
ontime7	12857.200191557	Sum of GTIs [s]
l2events	6936	Number of level 2 events



2 OBI

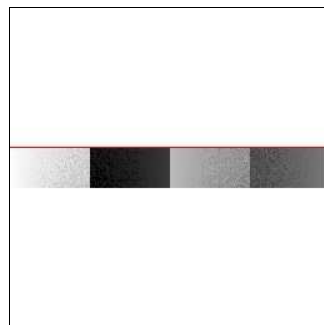
2.1 OBI

2.1.1 Images



2.1.2 Bias

Chip 7



2.1.3 Parameters

obi_num	1	Obi number	sched_exp_time	12000.000000	[s] Scheduled observation exposure time
ascdsver	8.4.5	Processing system revision	ontime	12857.200191557	Sum of GTIs [s]
caldsver	4.5.2	 	ontime7	12857.200191557	Sum of GTIs [s]
date	2012-10-31T03:45:22	Date and time of file creation	l1events	14484	Number of level 1 events
revision	3	Processing version of data			

2.1.4 Events

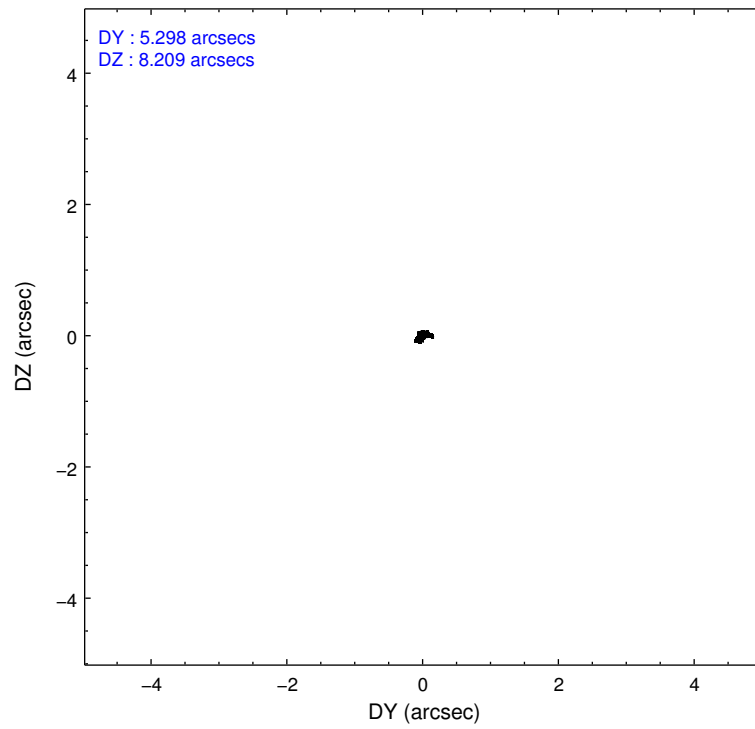
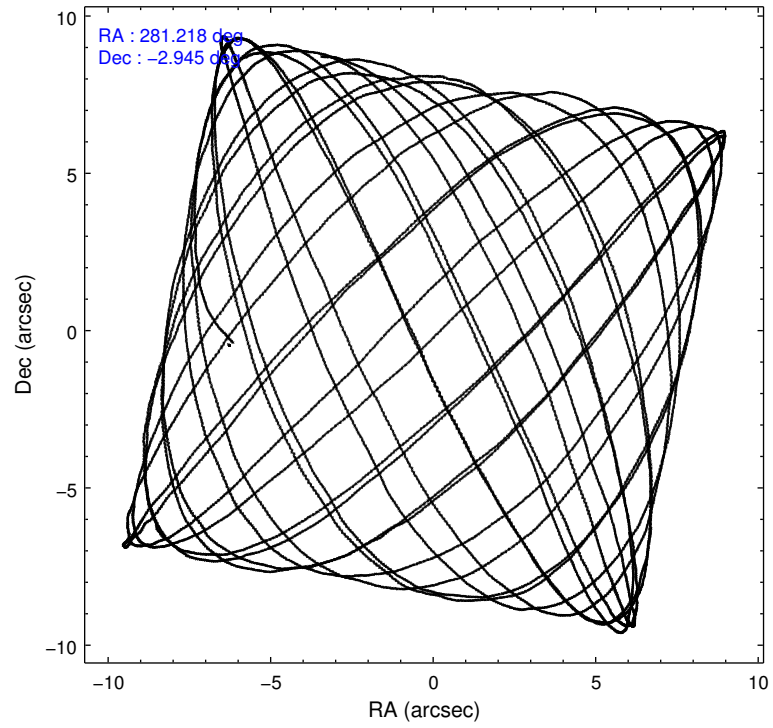
	ccd 7
level 1 events	14484
rejected events	7217
rejected %	49%

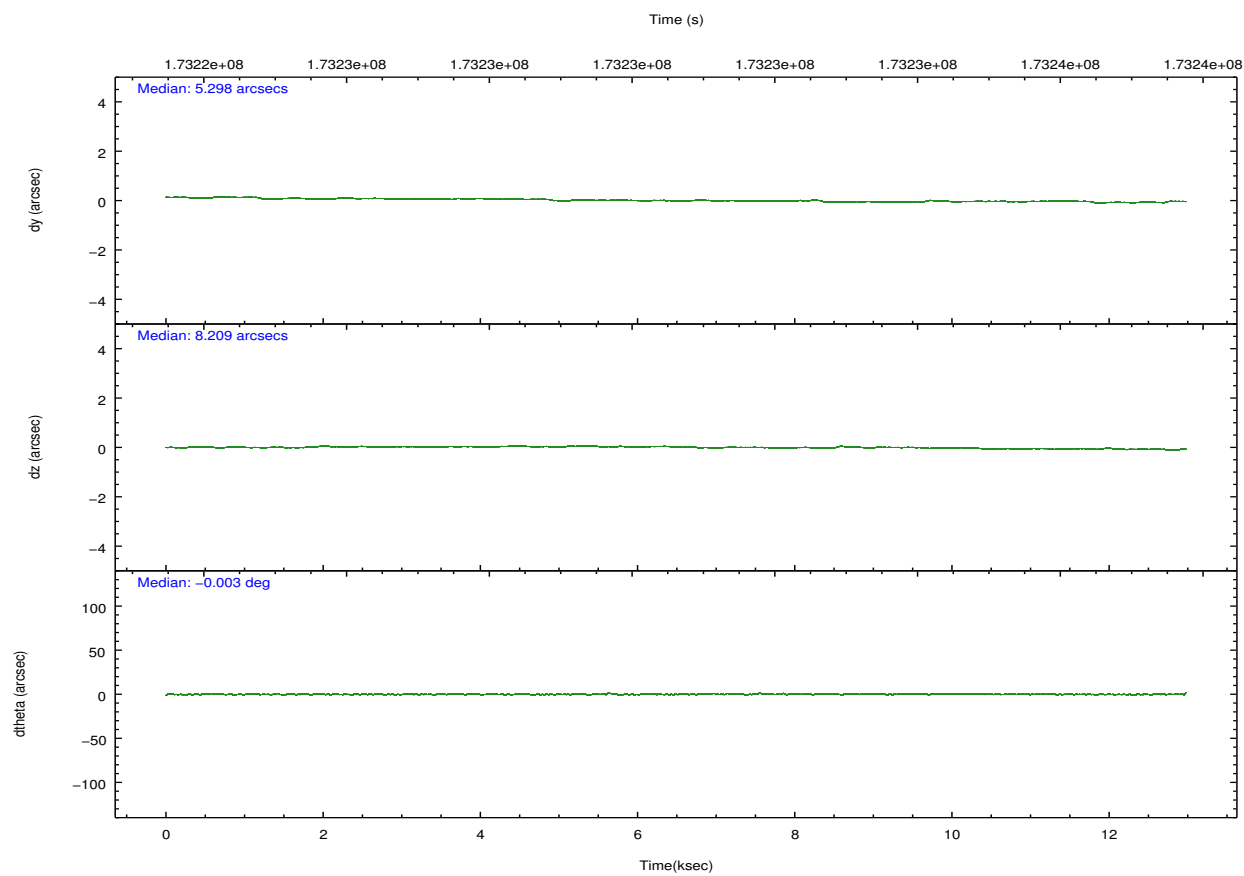
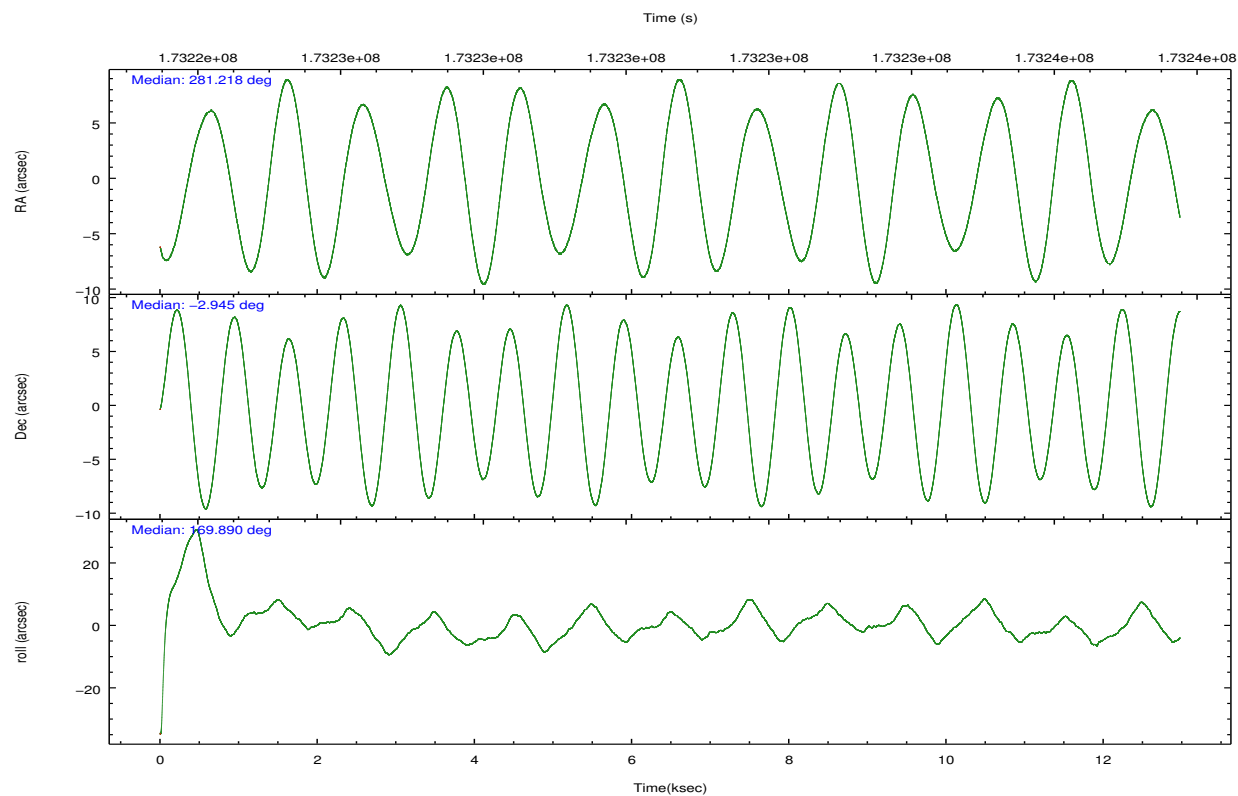
	ccd 7
grade 0 events	830
	5%
grade 1 events	15
	0%
grade 2 events	1347
	9%
grade 3 events	881
	6%
grade 4 events	928
	6%
grade 5 events	1244
	8%
grade 6 events	3281
	22%
grade 7 events	5958
	41%

2.2 Compared Parameters

Parameter	Planned	Actual	Parameter	Planned	Actual
Instrument	ACIS	ACIS	Obspar format version number	7	7
Detector	ACIS-7	ACIS-7	Obspar file type	PREDICTED	ACTUAL
Grating	NONE	NONE	Obspar update status	NONE	UPDATED
Data mode	VFAINT	VFAINT	Number of optional ACIS chips dropped	0	0
Observation mode	POINTING	POINTING	On-chip summing requested	N	N
[deg] Pointing RA	281.243924	281.2184072346839	Subarray requested	CUSTOM	1/8
[deg] Pointing Dec	-2.935103	-2.944704783615943	Subarray start row	449	449
[deg] Pointing Roll	169.732270	169.8875470445662	Subarray row count	128	128
[mm] SIM focus pos	-0.684267	-0.6828225247311905	Alternating exposures requested	N	N
[mm] SIM defocus	0	0.001444936568705701	[s] Primary exposure time	0.000000	0.4
[mm] SIM translation stage pos	-190.132523	-190.1400660498719			
[mm] SIM translation stage offset	0	0.00754346686406393			
[s] Observation start time (MET)	173225106.184000	173223747.24417			
Observation start date	2003-06-28T22:04:02	2003-06-28T21:42:27			
[s] Observation end time (MET)	173237106.184000	173237948.10728			
Observation end date	2003-06-29T01:24:02	2003-06-29T01:39:08			
Read mode	TIMED	TIMED			

2.3 Aspect



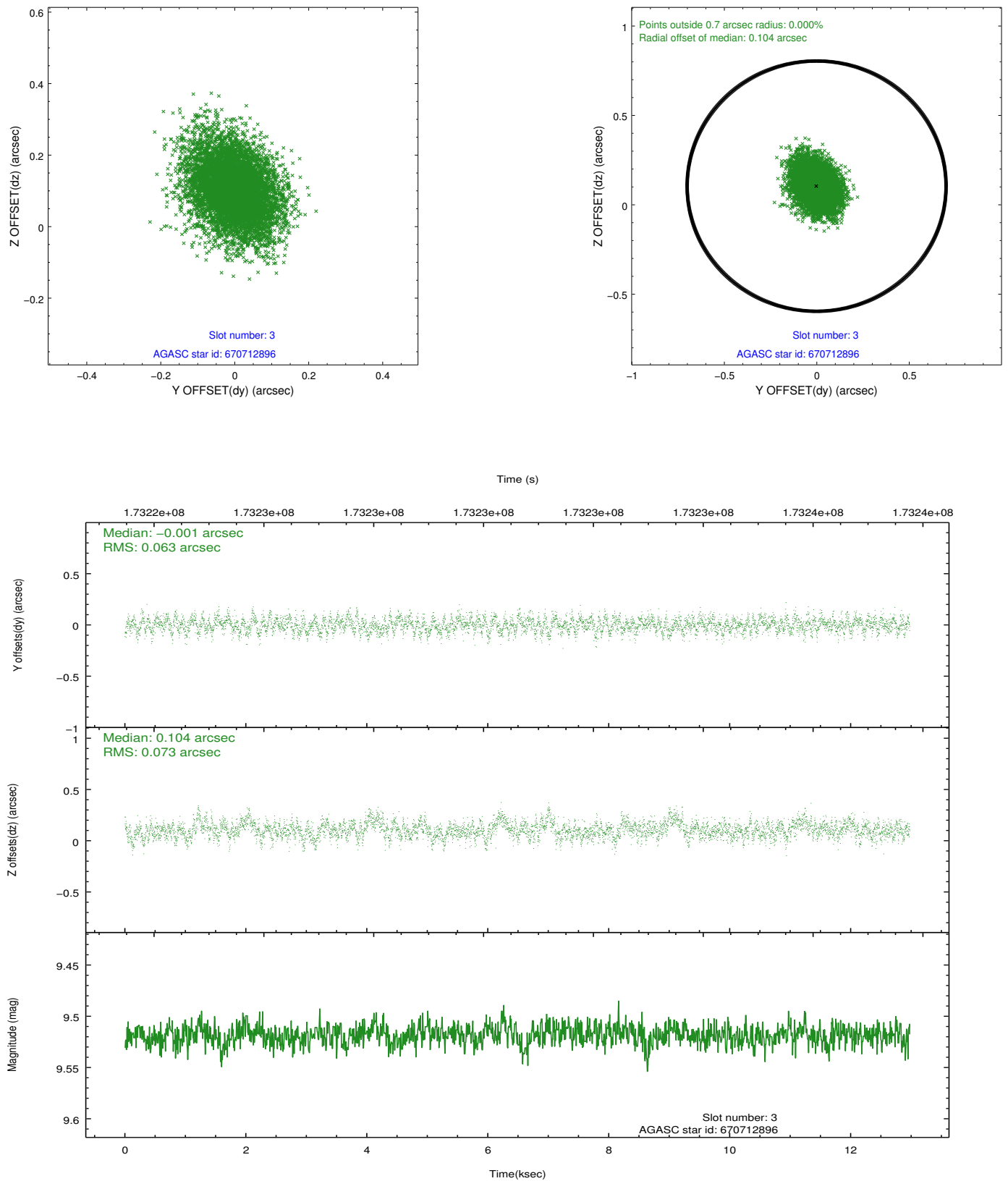


Slot Statistics

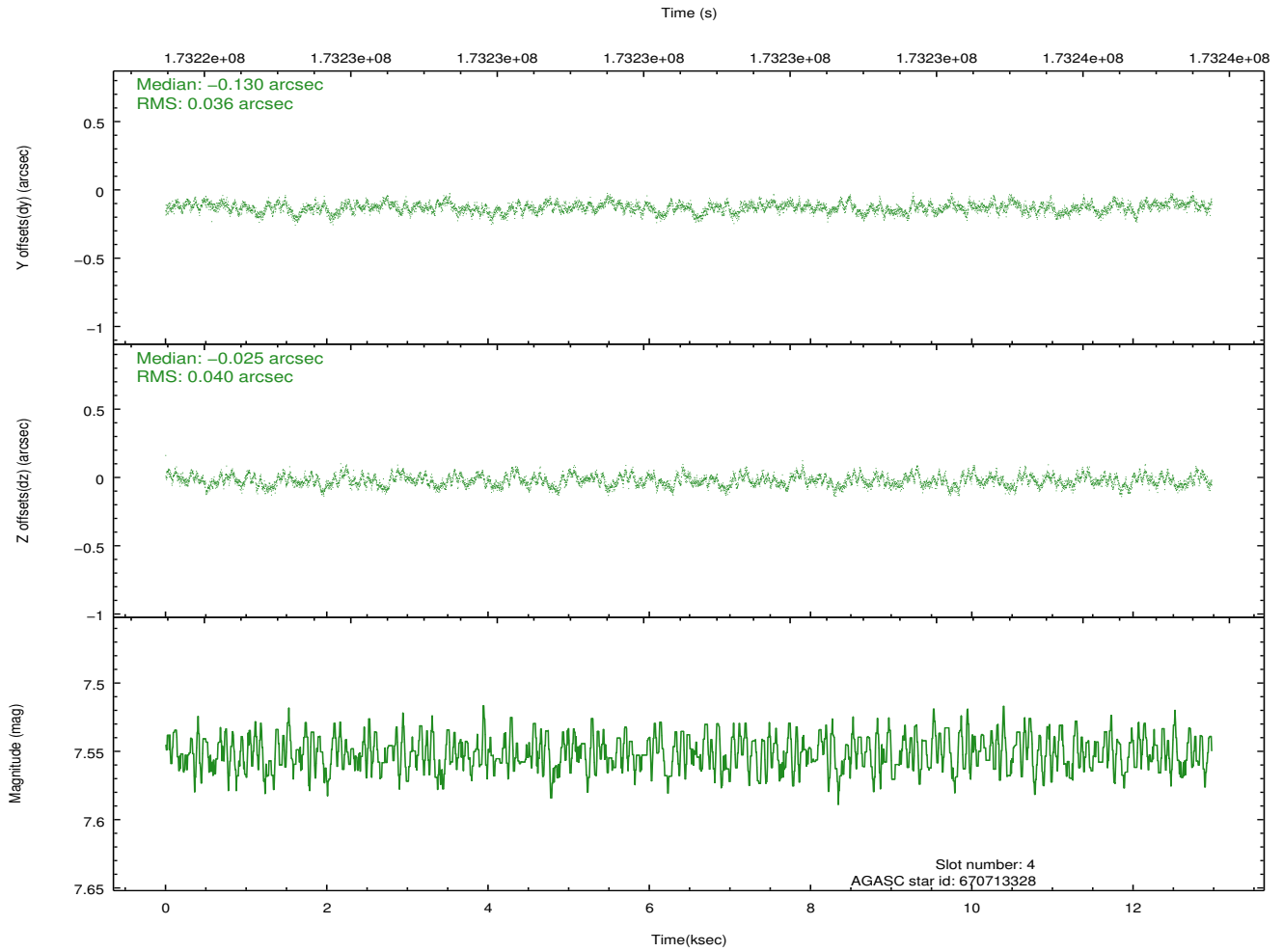
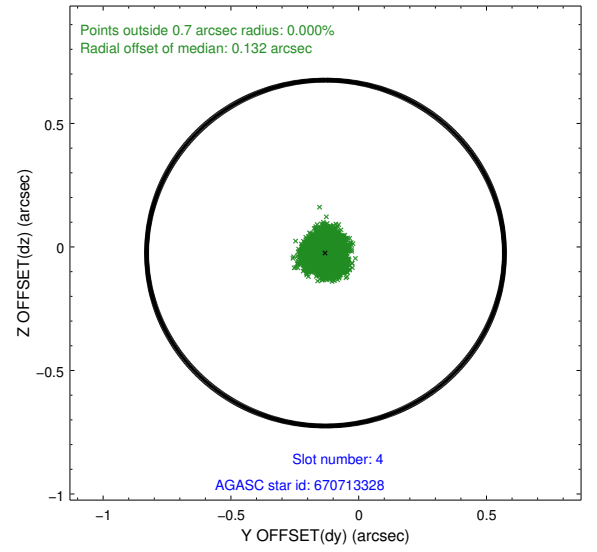
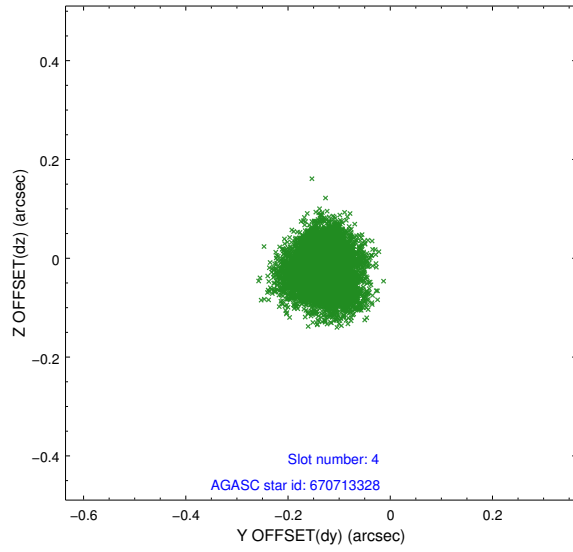
slot	status	id	mag	n_pts	med_dy	med_dz	dr1	dr2	ra	dec	mean_y	mean_z
0	FID	ACIS-S-2	7.11	3165	-0.032	-0.037	0.008	0.017	0.000000	0.000000	-758.07	-1729.43
1	FID	ACIS-S-4	7.21	3165	0.064	0.025	0.008	0.025	0.000000	0.000000	2155.16	178.70
2	FID	ACIS-S-5	7.23	3165	-0.065	0.021	0.008	0.018	0.000000	0.000000	-1810.44	172.84
3	GUIDE	670712896	9.52	6325	-0.001	0.104	0.102	0.169	281.136637	-3.286600	154.09	1314.71
4	GUIDE	670713328	7.55	6330	-0.130	-0.025	0.059	0.091	280.824681	-3.187771	1320.68	1164.17
5	GUIDE	670714008	9.02	6323	-0.007	0.036	0.079	0.128	281.129237	-3.153193	265.99	846.45
6	GUIDE	670830264	8.75	6328	0.096	-0.037	0.070	0.111	281.361536	-3.231556	-605.97	975.12
7	GUIDE	670713072	9.00	6325	0.046	-0.077	0.101	0.160	281.205407	-3.604132	-293.05	2394.88

2.4 Star Slots

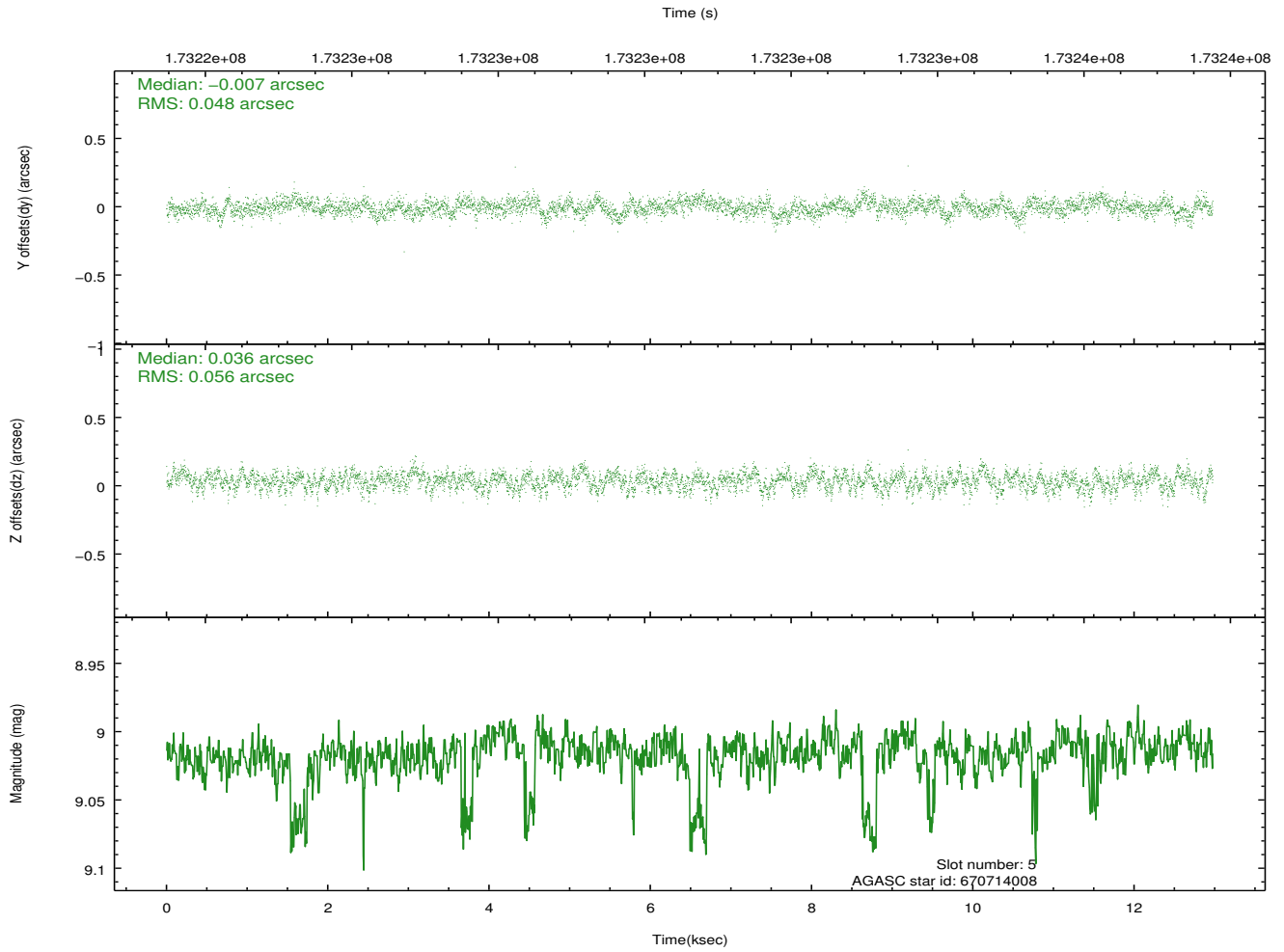
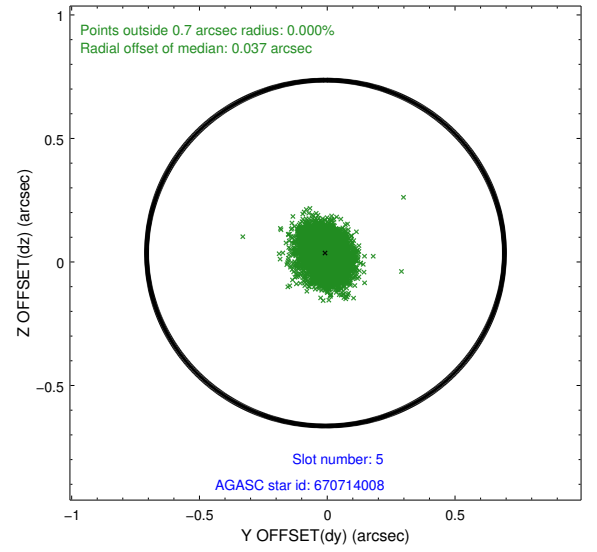
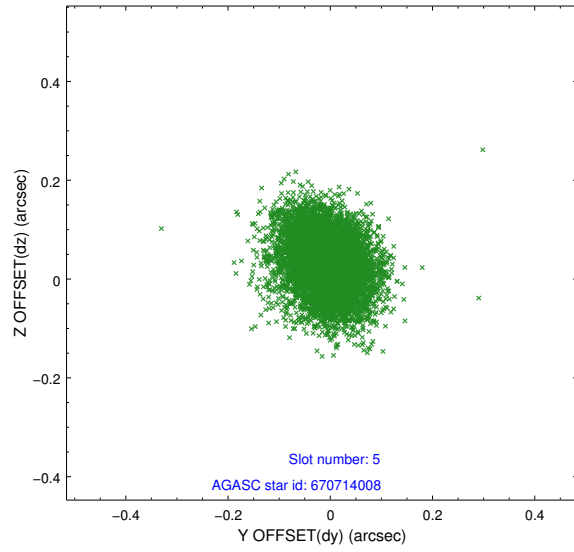
2.4.1 Slot 3



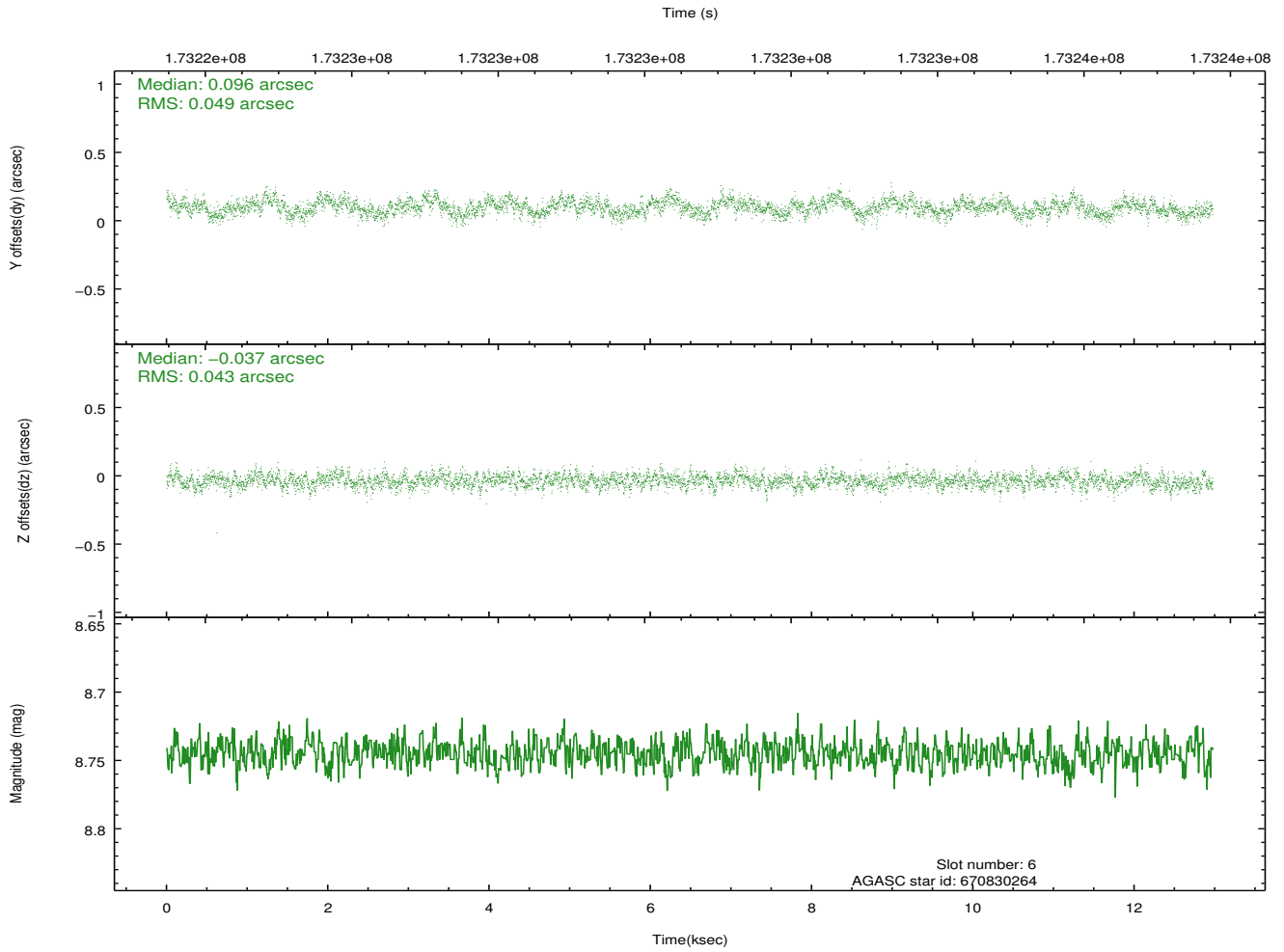
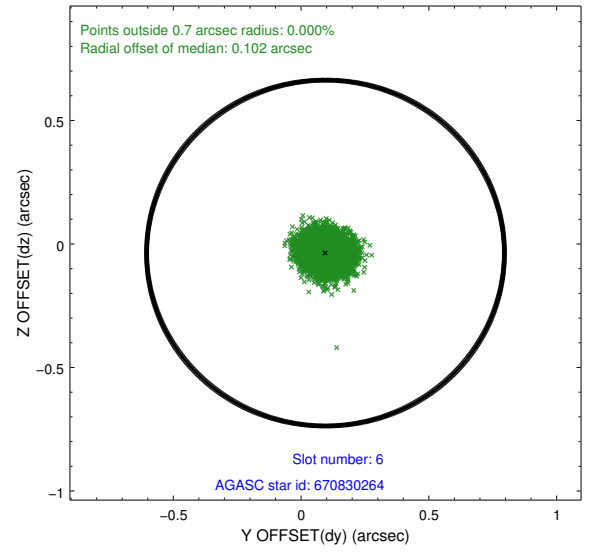
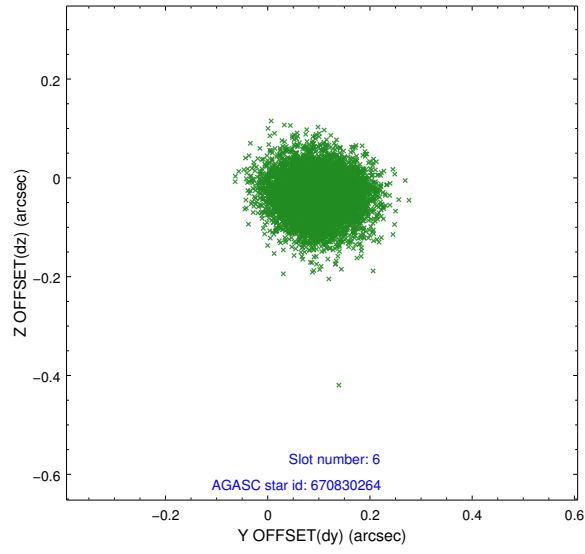
2.4.2 Slot 4



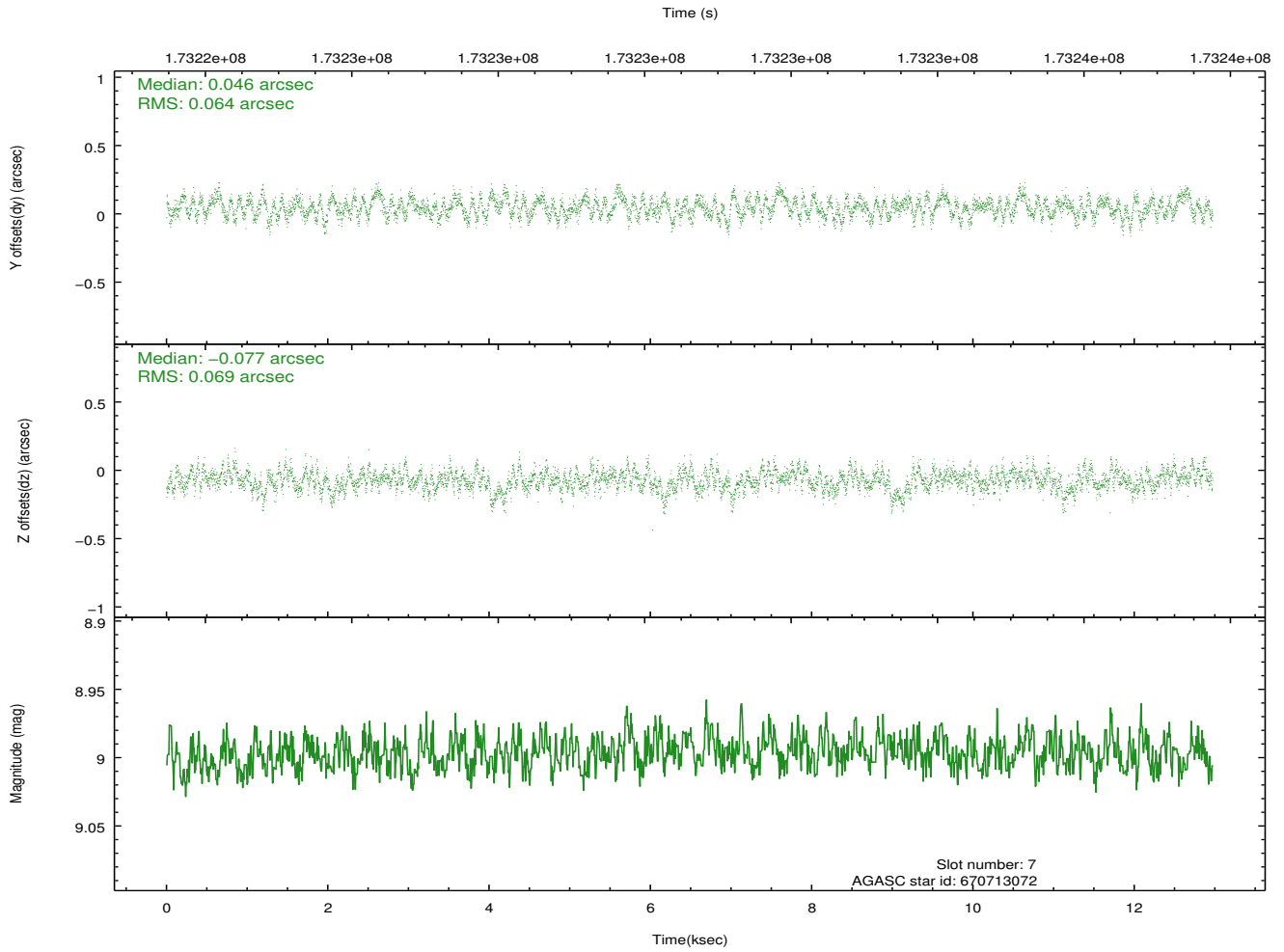
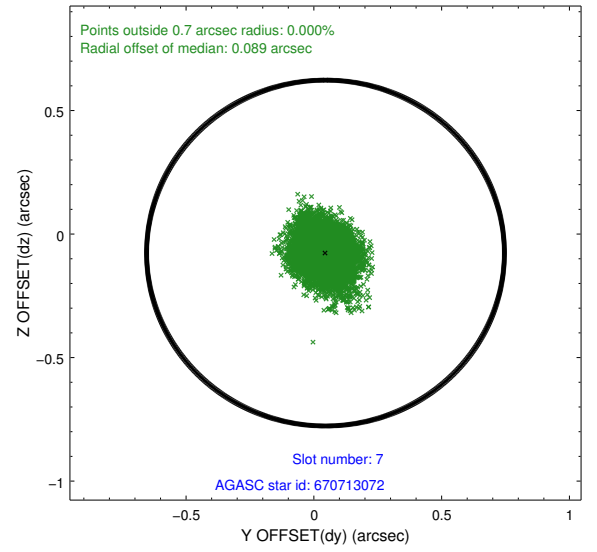
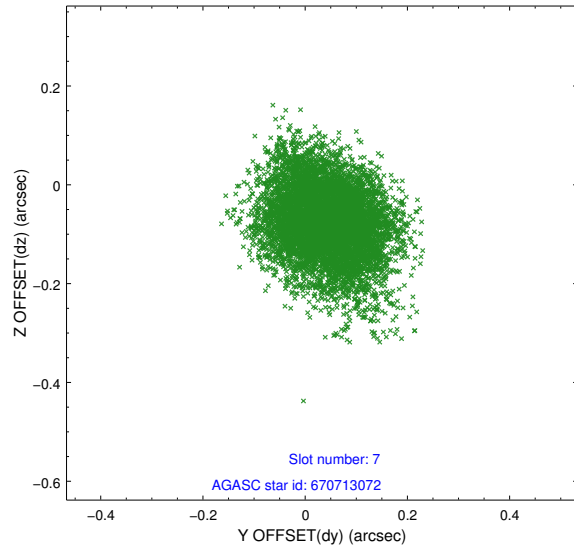
2.4.3 Slot 5



2.4.4 Slot 6

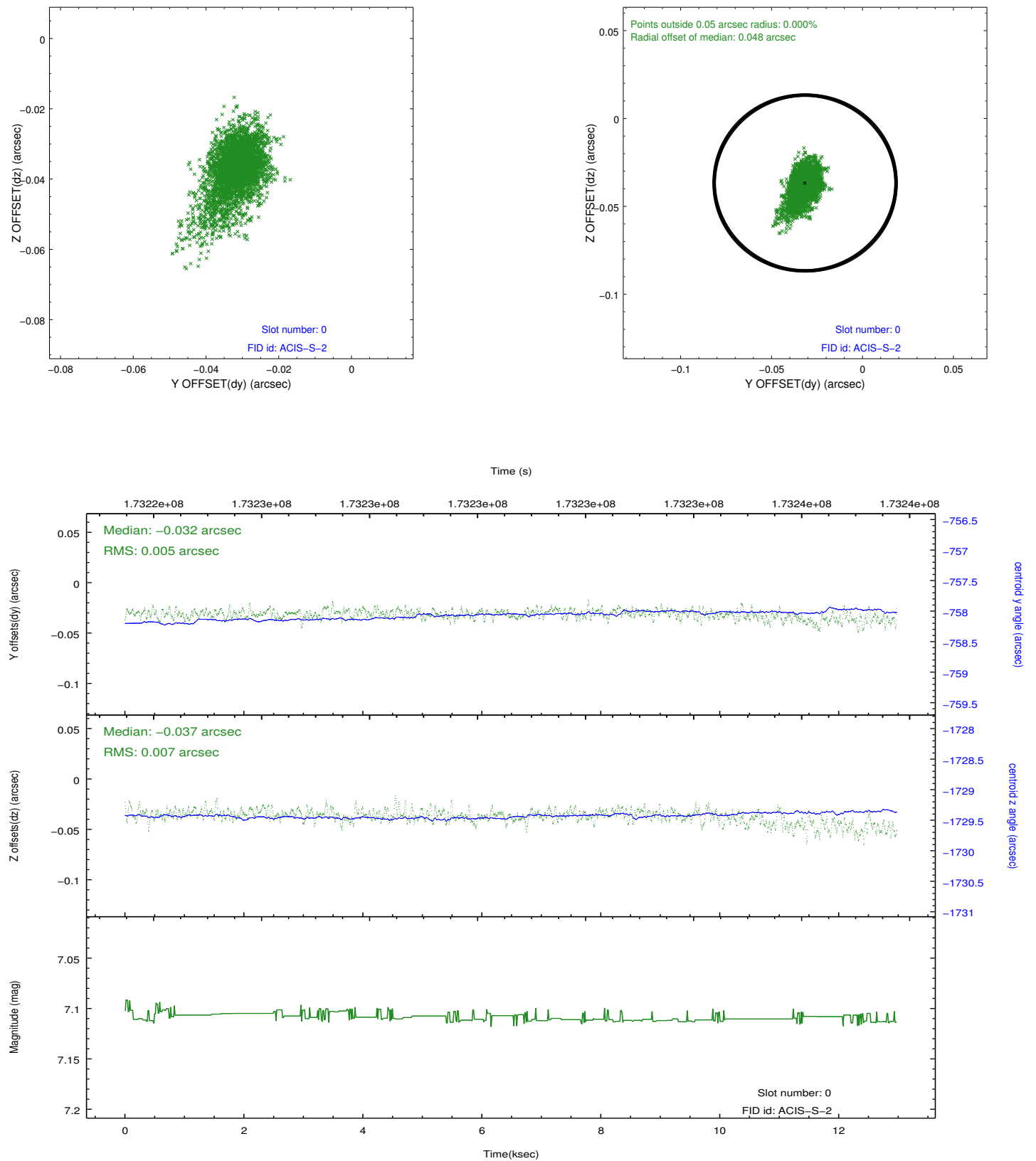


2.4.5 Slot 7

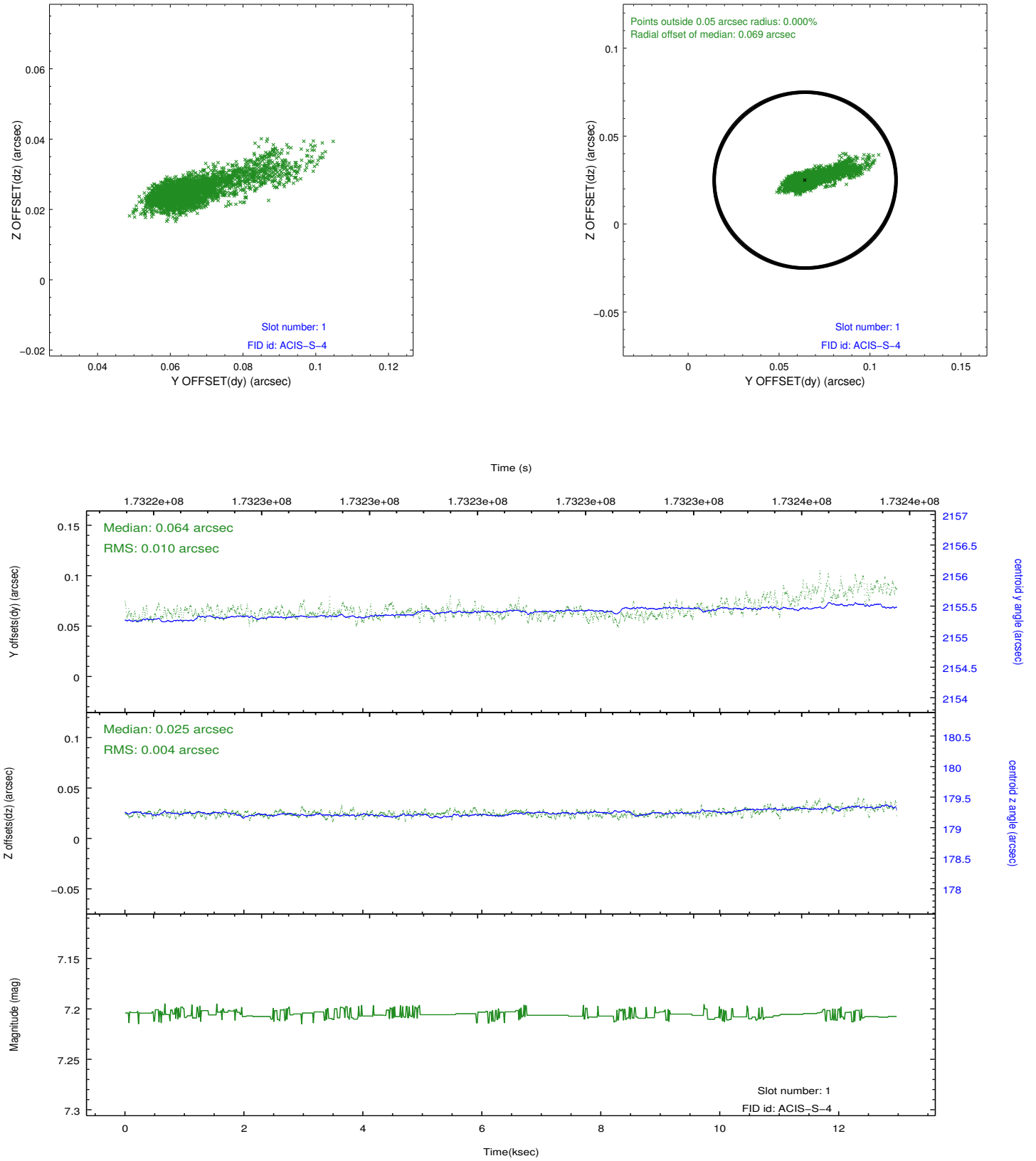


2.5 FID Slots

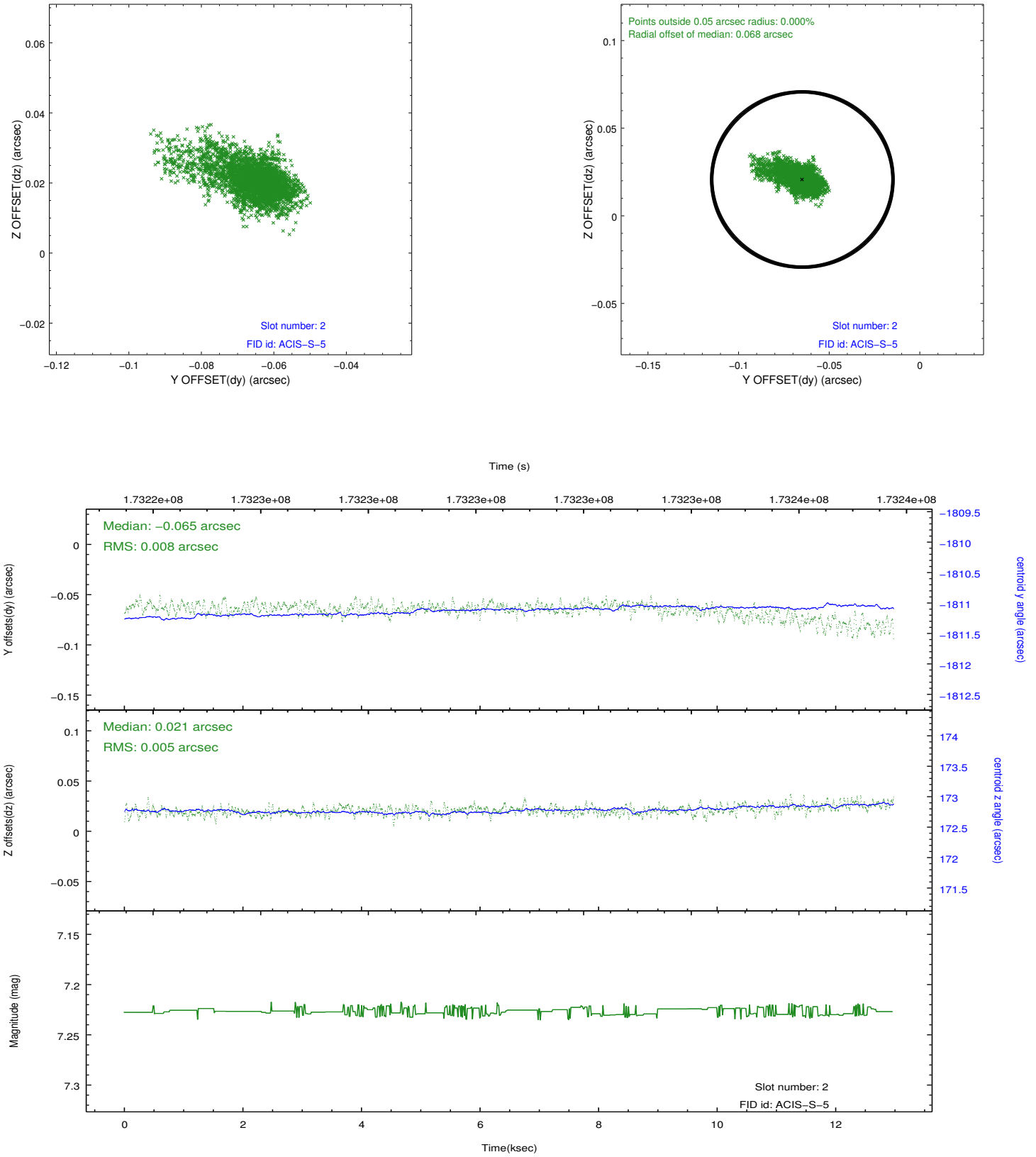
2.5.1 Slot 0



2.5.2 Slot 1



2.5.3 Slot 2



A Summary

A.1 Status

V&V Scientist	Jen Lauer
V&V Date (YYYY-MM-DD)	2012.11.16
V&V Edition	1
V&V Disposition and Status	OK
V&V Charge Time	12.86

A.2 Comments

Monitor constraint met.