

# V&V Reference Report

## L2 ASCDS Version : 8.4.5

Observation 3793 - L2 Version 3  
Chandra X-Ray Center

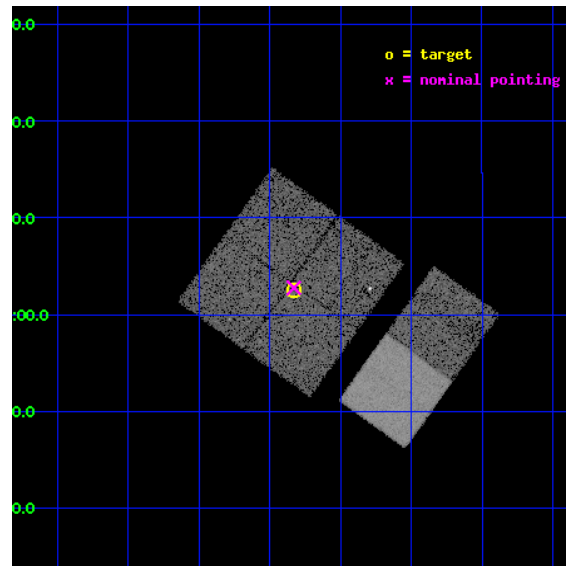
L2 Processing Date : Oct 28 2012

## Contents

<b>1</b>	<b>Front</b>	<b>2</b>
<b>2</b>	<b>OBI</b>	<b>3</b>
2.1	OBI . . . . .	3
2.1.1	Images . . . . .	3
2.1.2	Bias . . . . .	3
2.1.3	Parameters . . . . .	4
2.1.4	Events . . . . .	4
2.2	Compared Parameters . . . . .	5
2.3	Aspect . . . . .	6
2.4	Star Slots . . . . .	9
2.4.1	Slot 3 . . . . .	9
2.4.2	Slot 4 . . . . .	10
2.4.3	Slot 5 . . . . .	11
2.4.4	Slot 6 . . . . .	12
2.4.5	Slot 7 . . . . .	13
2.5	FID Slots . . . . .	14
2.5.1	Slot 0 . . . . .	14
2.5.2	Slot 1 . . . . .	15
2.5.3	Slot 2 . . . . .	16
<b>A</b>	<b>Summary</b>	<b>17</b>
A.1	Status . . . . .	17
A.2	Comments . . . . .	17

# 1 Front

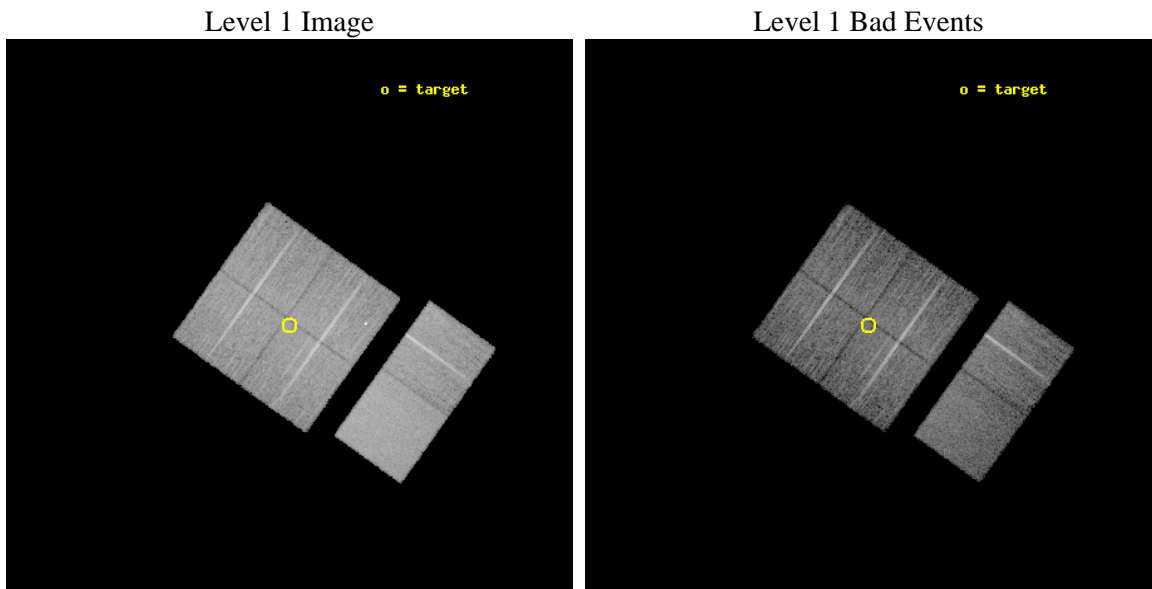
seq_num	400280	Sequence number
obs_id	3793	Observation id
title	LOCALIZING THE TRANSIENT 89 SECOND PULSAR XTE J1906+09	Proposal ti
observer	Dr. Richard Rothschild	Principal investigator
object	XTE J1906+09	Source name
dtcycle	0	&#160
cycle	P	events from which exps? Prim/Second/Both
ra_targ	286.333333	Observer's specified target RA [deg]
dec_targ	9.041667	Observer's specified target Dec [deg]
ra_nom	286.33235402868	Nominal RA [deg]
dec_nom	9.046179157986	Nominal Dec [deg]
roll_nom	125.55149976122	Nominal Roll [deg]
revision	3	Processing version of data
ontime	13465.599949837	Sum of GTIs [s]
livetime	13295.090415261	Livetime [s]
ontime0	13462.358949631	Sum of GTIs [s]
ontime1	13465.599949837	Sum of GTIs [s]
ontime2	13465.599949837	Sum of GTIs [s]
ontime3	13465.599949837	Sum of GTIs [s]
ontime6	13465.599949837	Sum of GTIs [s]
ontime7	13465.599949837	Sum of GTIs [s]
l2events	91297	Number of level 2 events



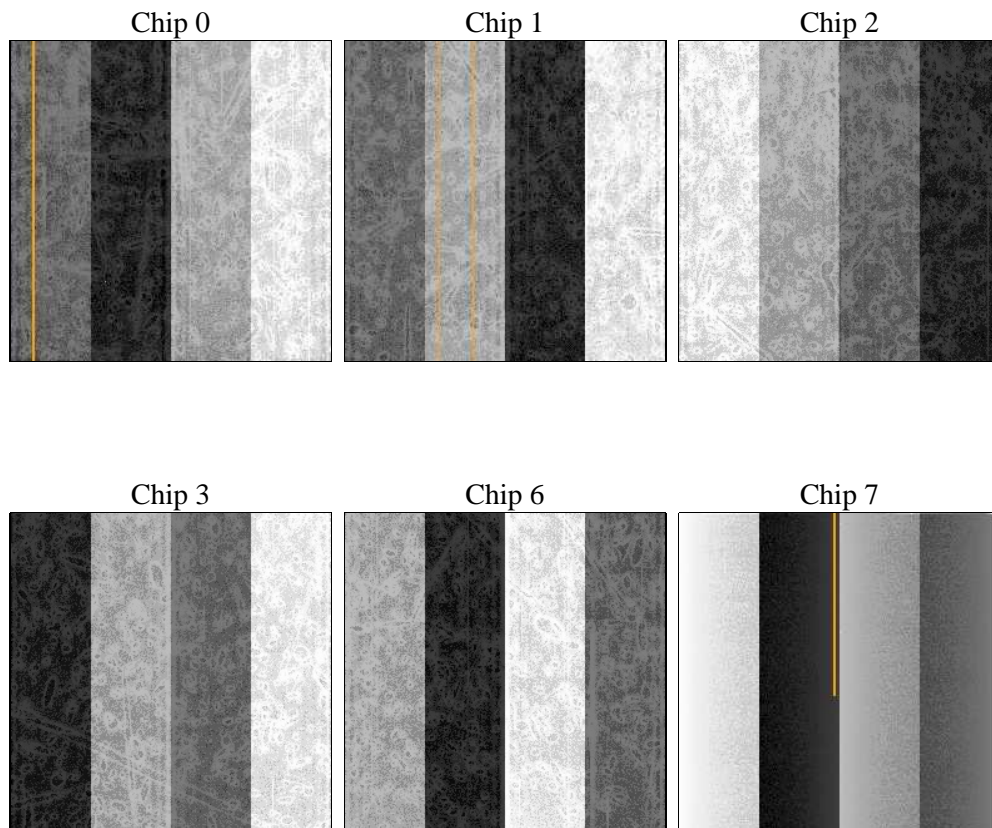
## 2 OBI

### 2.1 OBI

#### 2.1.1 Images



#### 2.1.2 Bias



### 2.1.3 Parameters

obi_num	0	Obi number	sched_exp_time	13500.000000	[s] Scheduled observation exposure time
ascdsver	8.4.5	Processing system revision	ontime	13465.599949837	Sum of GTIs [s]
caldsver	4.5.2	&#160	ontime0	13462.358949631	Sum of GTIs [s]
date	2012-10-28T13:35:18	Date and time of file creation	ontime1	13465.599949837	Sum of GTIs [s]
revision	3	Processing version of data	ontime2	13465.599949837	Sum of GTIs [s]
			ontime3	13465.599949837	Sum of GTIs [s]
			ontime6	13465.599949837	Sum of GTIs [s]
			ontime7	13465.599949837	Sum of GTIs [s]
			l1events	533526	Number of level 1 events

### 2.1.4 Events

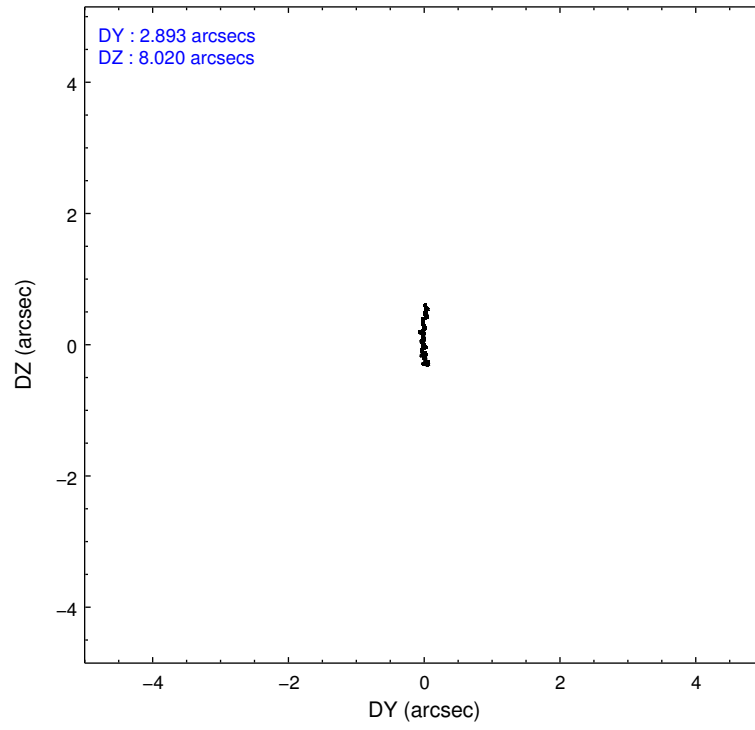
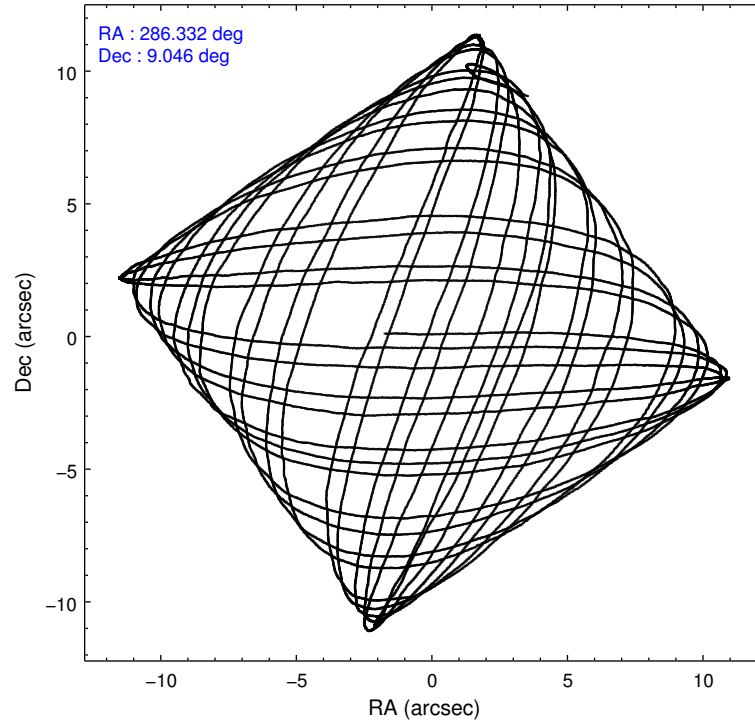
	ccd 0	ccd 1	ccd 2	ccd 3	ccd 6	ccd 7		ccd 0	ccd 1	ccd 2	ccd 3	ccd 6	ccd 7
level 1 events	79281	81338	86837	82682	89711	113677	grade 0 events	4453	4408	5283	4456	4168	4055
rejected events	68923	70443	75598	72558	79418	67035		5%	5%	6%	5%	4%	3%
rejected %	86%	86%	87%	87%	88%	58%	grade 1 events	39	55	53	58	43	86
								0%	0%	0%	0%	0%	0%
							grade 2 events	2140	2235	2080	1873	2095	9200
								2%	2%	2%	2%	2%	8%
							grade 3 events	1056	1062	1025	980	1007	4186
								1%	1%	1%	1%	1%	3%
							grade 4 events	938	1122	1004	1022	935	4177
								1%	1%	1%	1%	1%	3%
							grade 5 events	3272	3441	3269	3800	4052	10992
								4%	4%	3%	4%	4%	9%
							grade 6 events	1774	2070	1848	1793	2092	25030
								2%	2%	2%	2%	2%	22%
							grade 7 events	65609	66945	72275	68700	75319	55951
								82%	82%	83%	83%	83%	49%

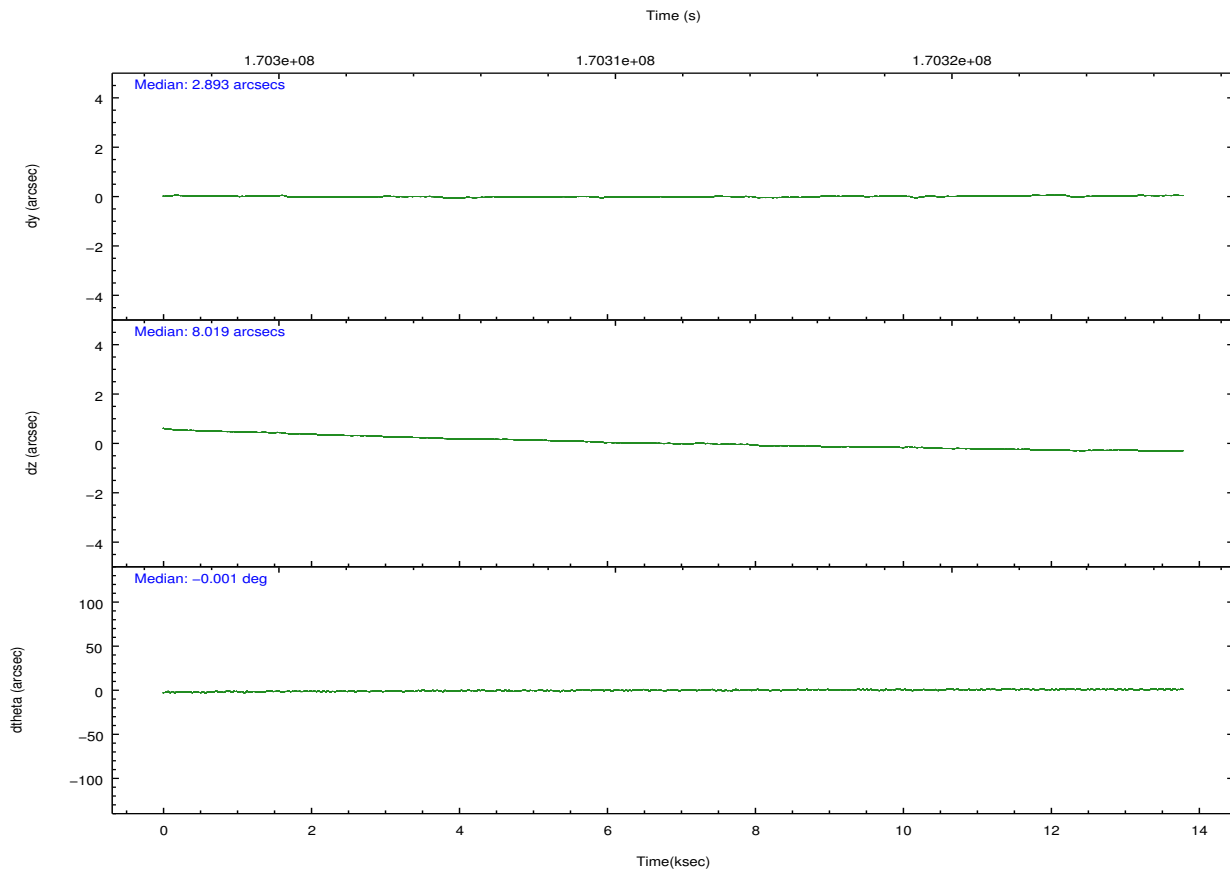
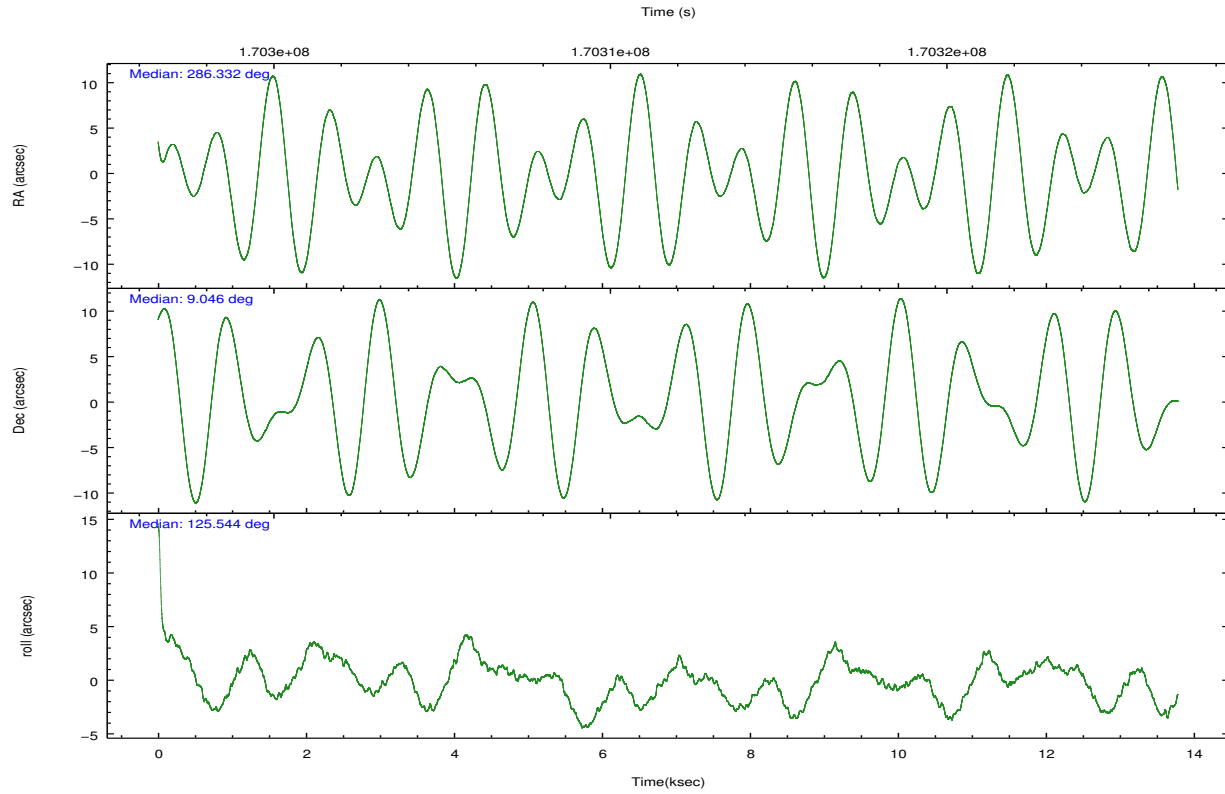


## 2.2 Compared Parameters

Parameter	Planned	Actual	Parameter	Planned	Actual
Instrument	ACIS	ACIS	Obspar format version number	7	7
Detector	ACIS-012367	ACIS-012367	Obspar file type	PREDICTED	ACTUAL
Grating	NONE	NONE	Obspar update status	NONE	UPDATED
Data mode	FAINT	FAINT	Number of optional ACIS chips dropped	0	0
Observation mode	POINTING	POINTING	On-chip summing requested	N	N
[deg] Pointing RA	286.357599	286.3323540286832	Subarray requested	NONE	NONE
[deg] Pointing Dec	9.034955	9.046179157985963	Alternating exposures requested	N	N
[deg] Pointing Roll	125.338834	125.5514997612158	[s] Primary exposure time	0.000000	3.2
[mm] SIM focus pos	-0.782348	-0.7809083437167272			
[mm] SIM defocus	0	0.001439871863259334			
[mm] SIM translation stage pos	-233.592463	-233.5874344608287			
[mm] SIM translation stage offset	0	-0.005018542100998502			
[s] Observation start time (MET)	170304247.184000	170303239.22016			
Observation start date	2003-05-26T02:43:03	2003-05-26T02:27:19			
[s] Observation end time (MET)	170317747.184000	170319562.34585			
Observation end date	2003-05-26T06:28:03	2003-05-26T06:59:22			
Read mode	TIMED	TIMED			

## 2.3 Aspect



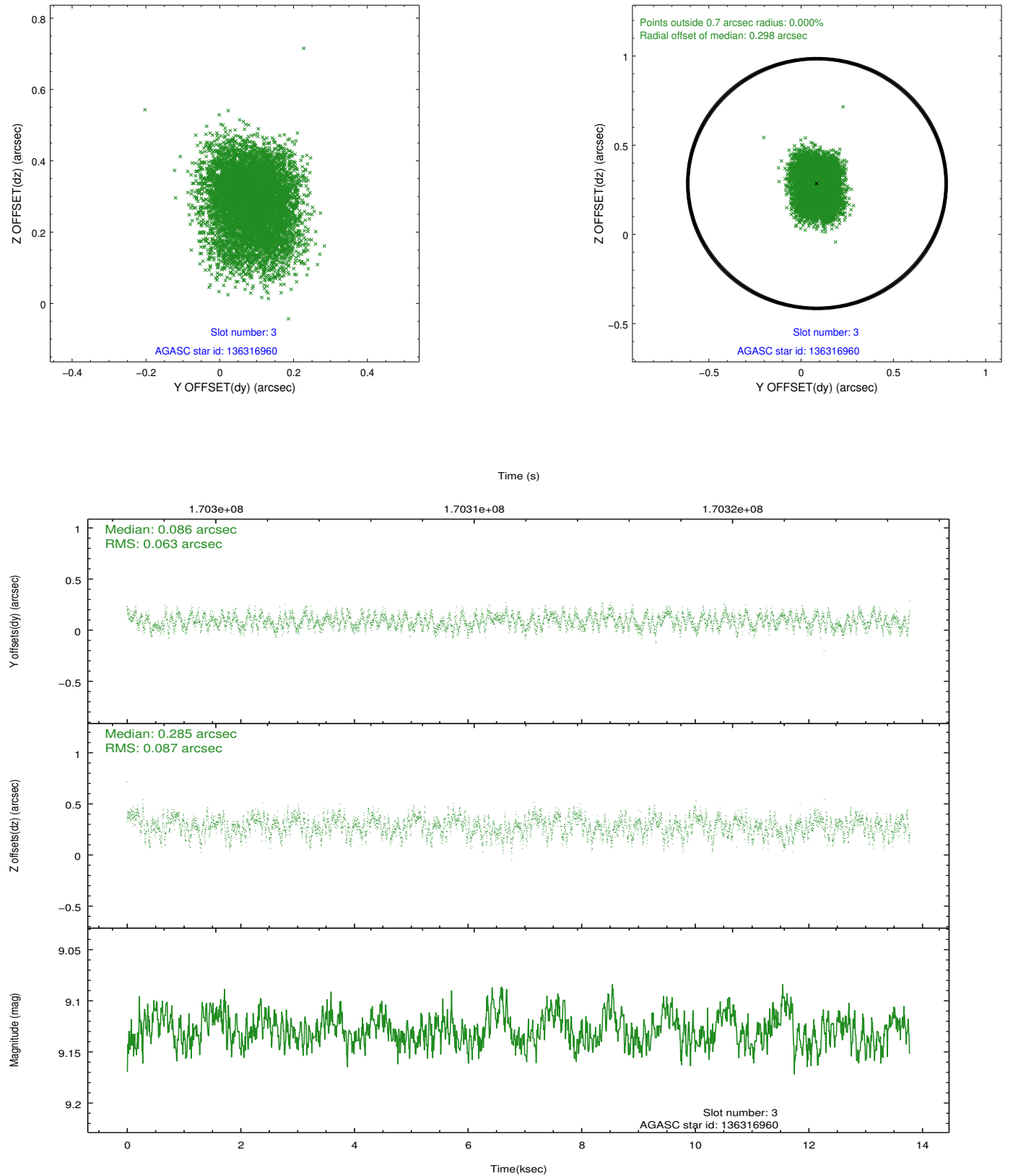


### Slot Statistics

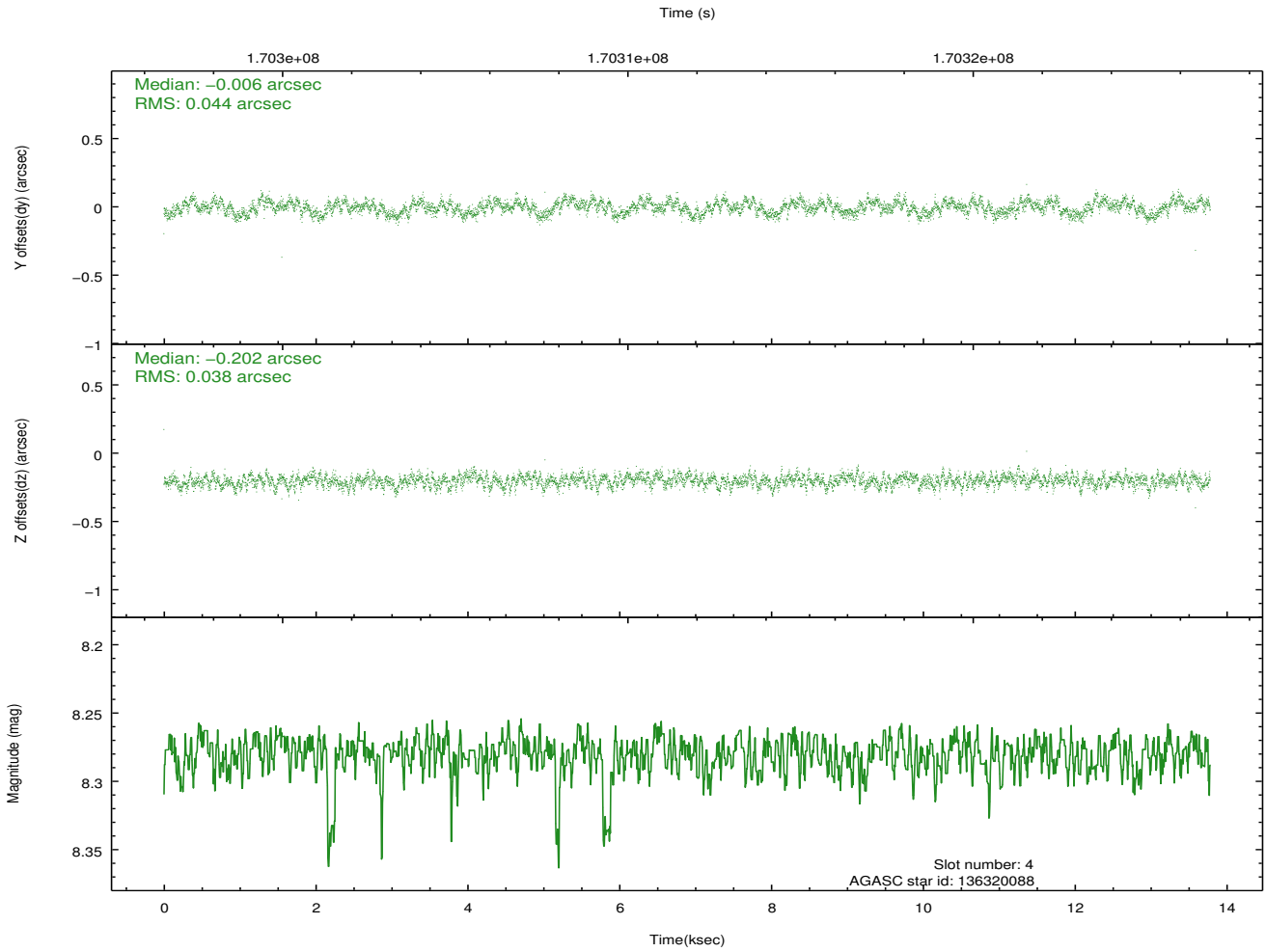
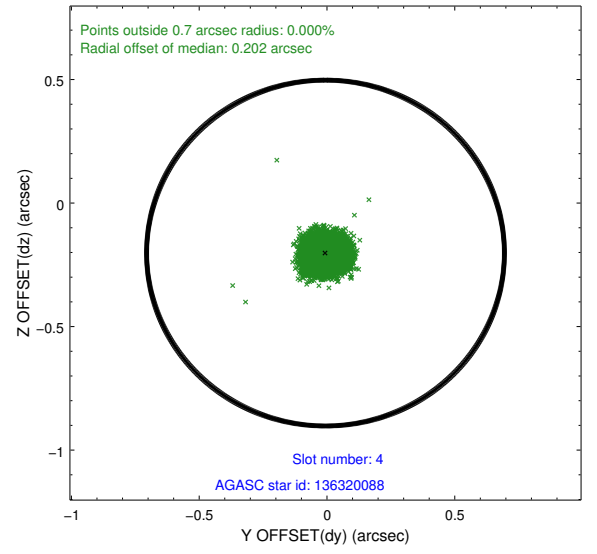
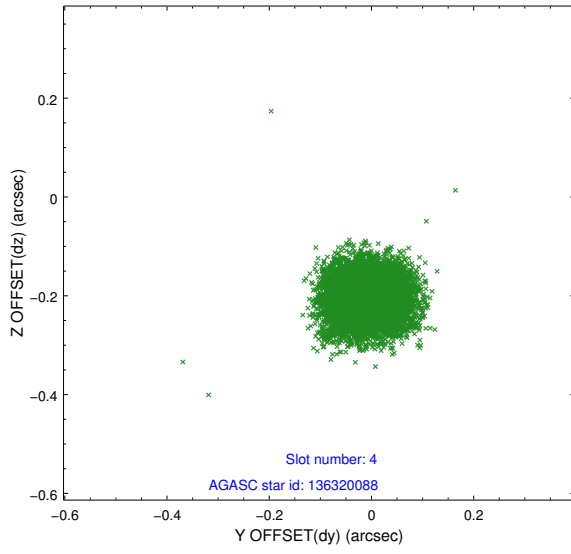
slot	status	id	mag	n_pts	med_dy	med_dz	dr1	dr2	ra	dec	mean_y	mean_z
0	FID	ACIS-I-1	7.24	3362	-0.004	0.046	0.014	0.023	0.000000	0.000000	936.89	-831.44
1	FID	ACIS-I-5	7.24	3362	-0.079	0.046	0.009	0.015	0.000000	0.000000	-1811.08	1065.90
2	FID	ACIS-I-6	7.26	3362	-0.009	-0.021	0.010	0.015	0.000000	0.000000	402.08	1710.70
3	GUIDE	136316960	9.13	6720	0.086	0.285	0.115	0.181	287.104881	9.133555	-1243.95	-2373.16
4	GUIDE	136320088	8.28	6713	-0.006	-0.202	0.063	0.098	285.930295	8.779864	130.75	1770.64
5	GUIDE	136323816	8.11	6725	0.228	-0.347	0.072	0.109	286.124291	8.296375	-1687.95	2215.94
6	GUIDE	136845920	7.29	6725	-0.121	0.101	0.075	0.113	286.285607	9.642131	1930.92	-1054.87
7	GUIDE	136844512	7.40	6723	-0.181	0.174	0.080	0.127	286.436543	9.770401	1998.40	-1759.21

## 2.4 Star Slots

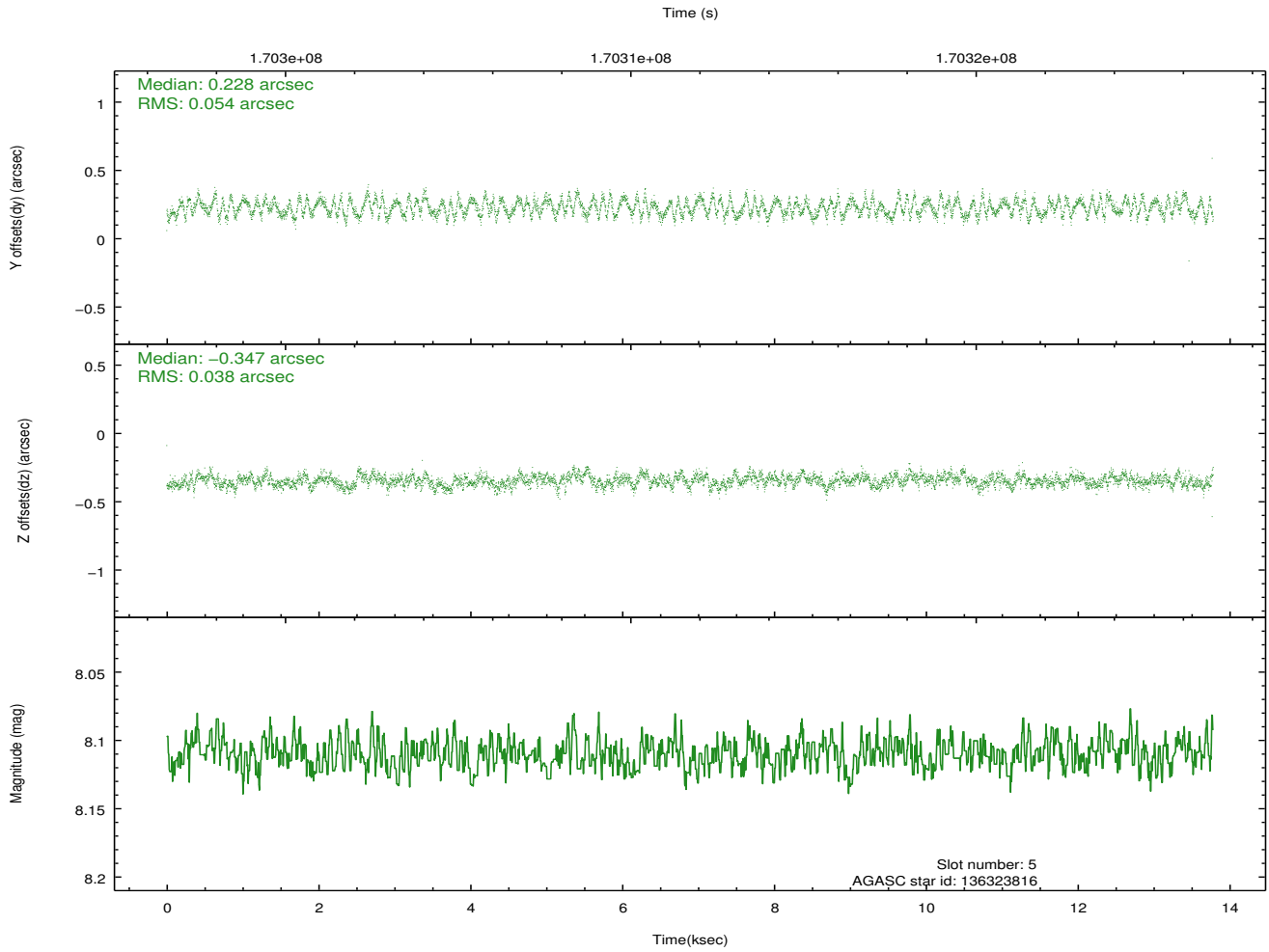
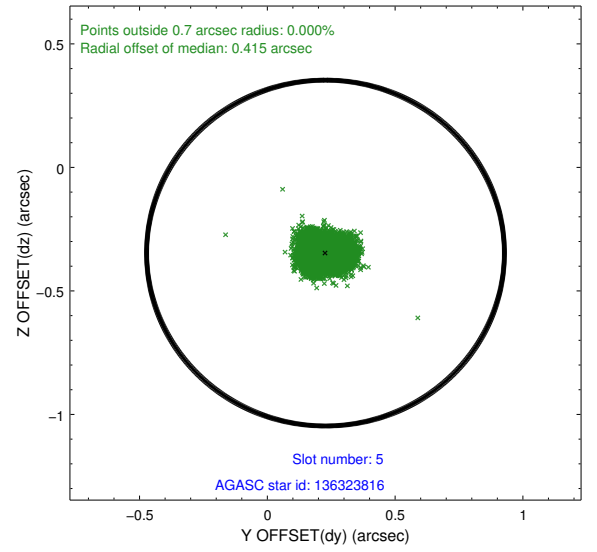
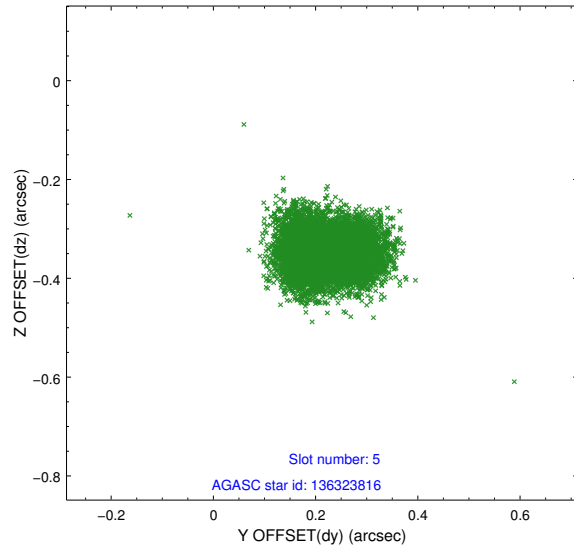
### 2.4.1 Slot 3



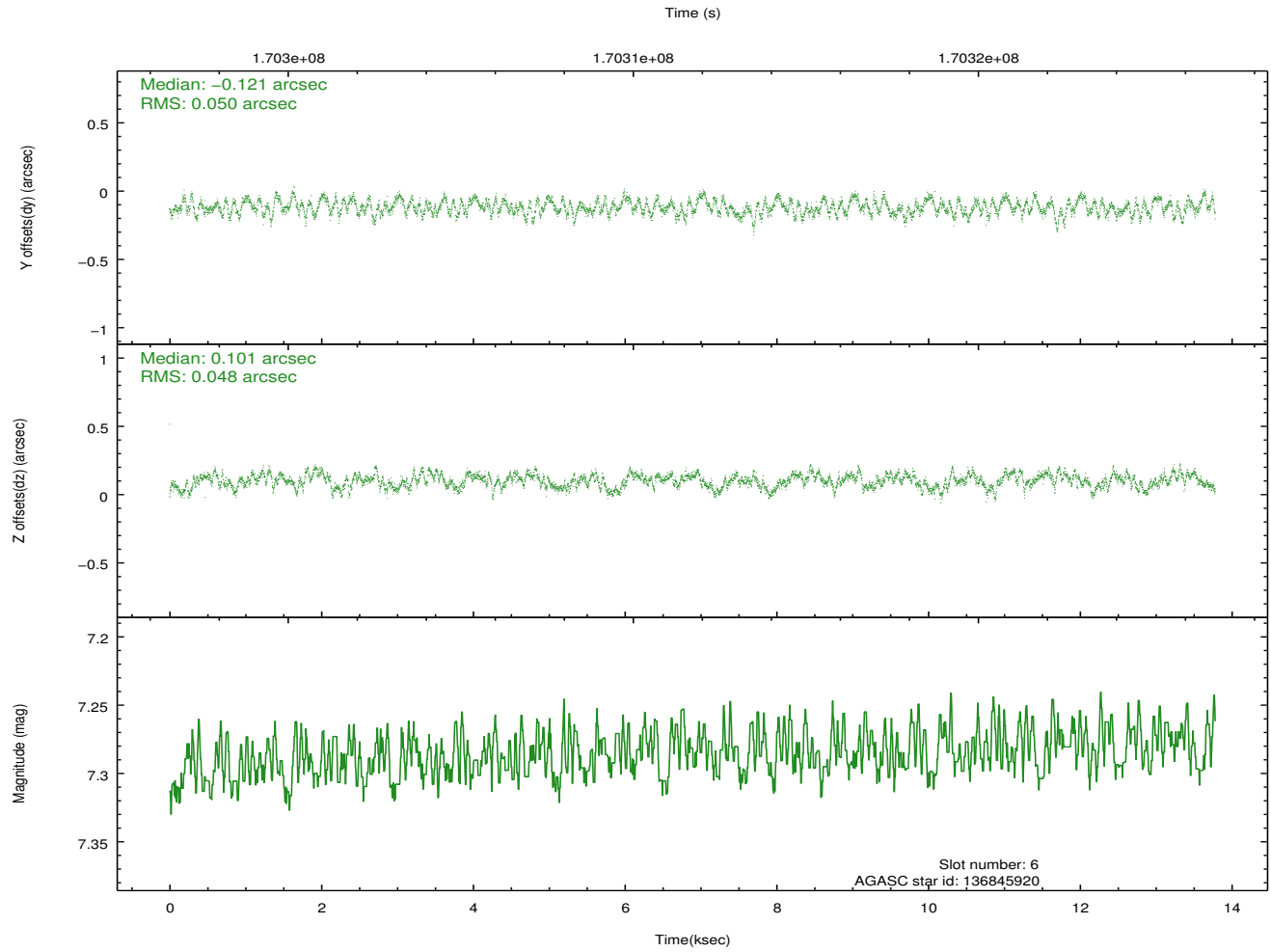
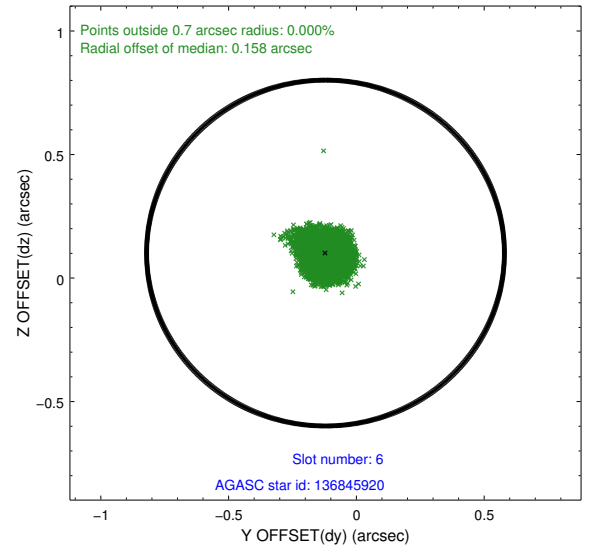
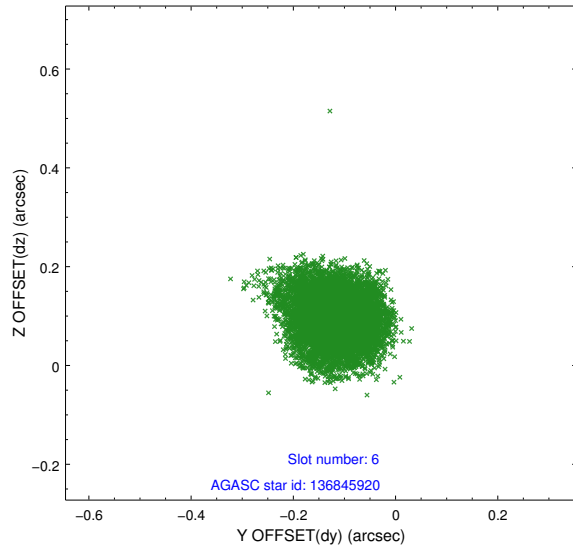
## 2.4.2 Slot 4



### 2.4.3 Slot 5

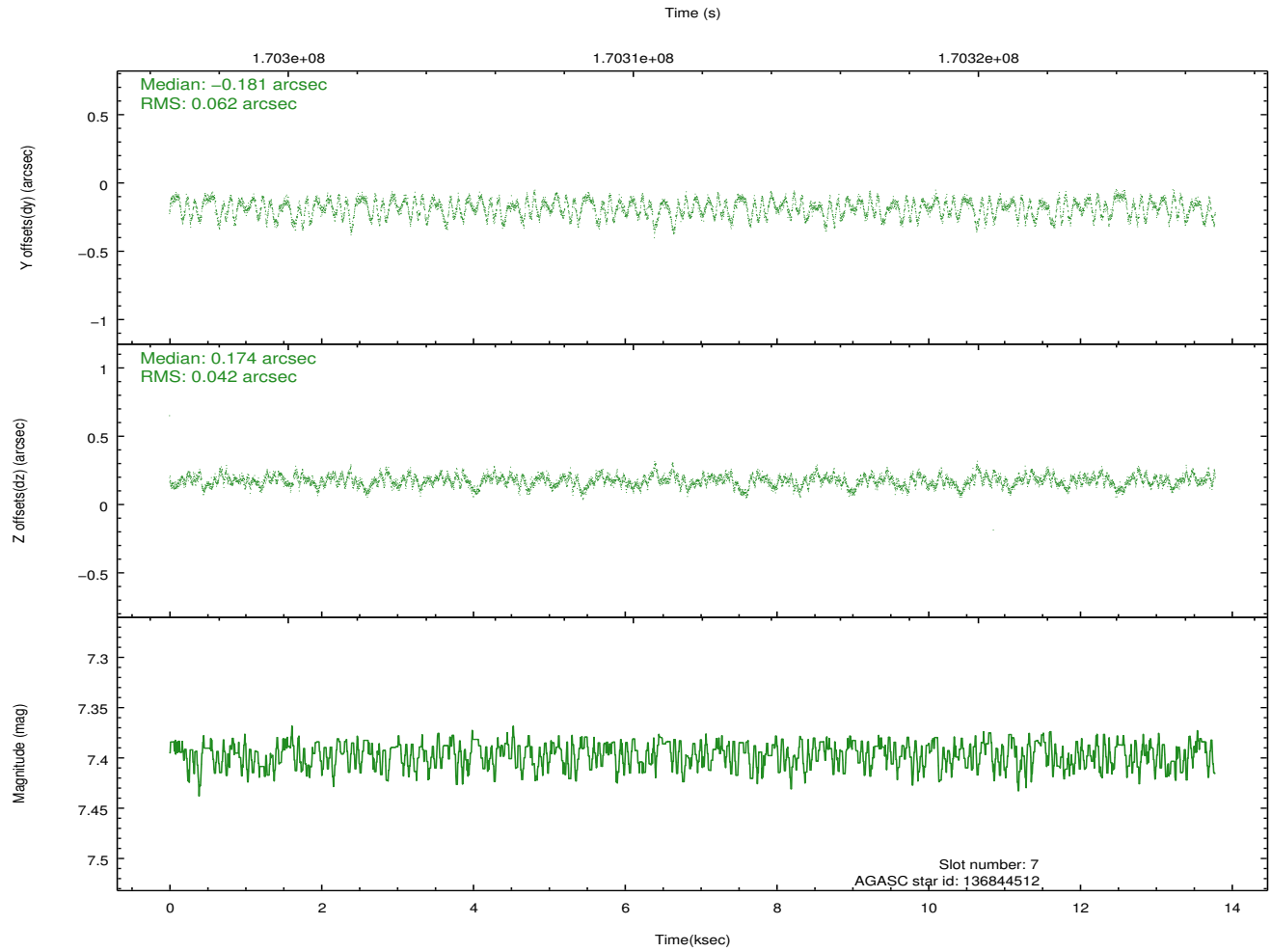
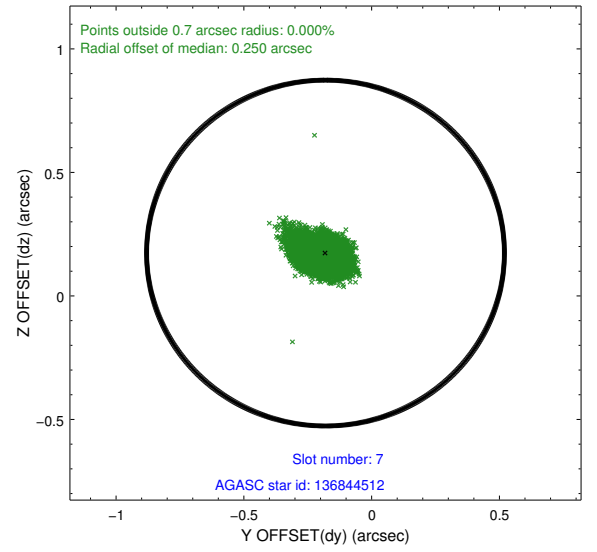
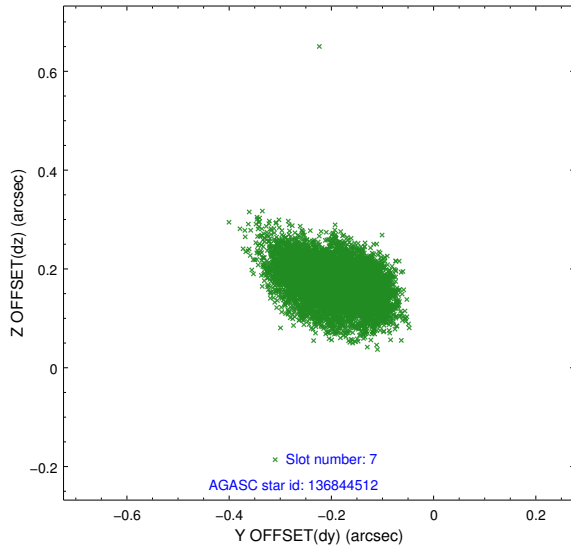


## 2.4.4 Slot 6



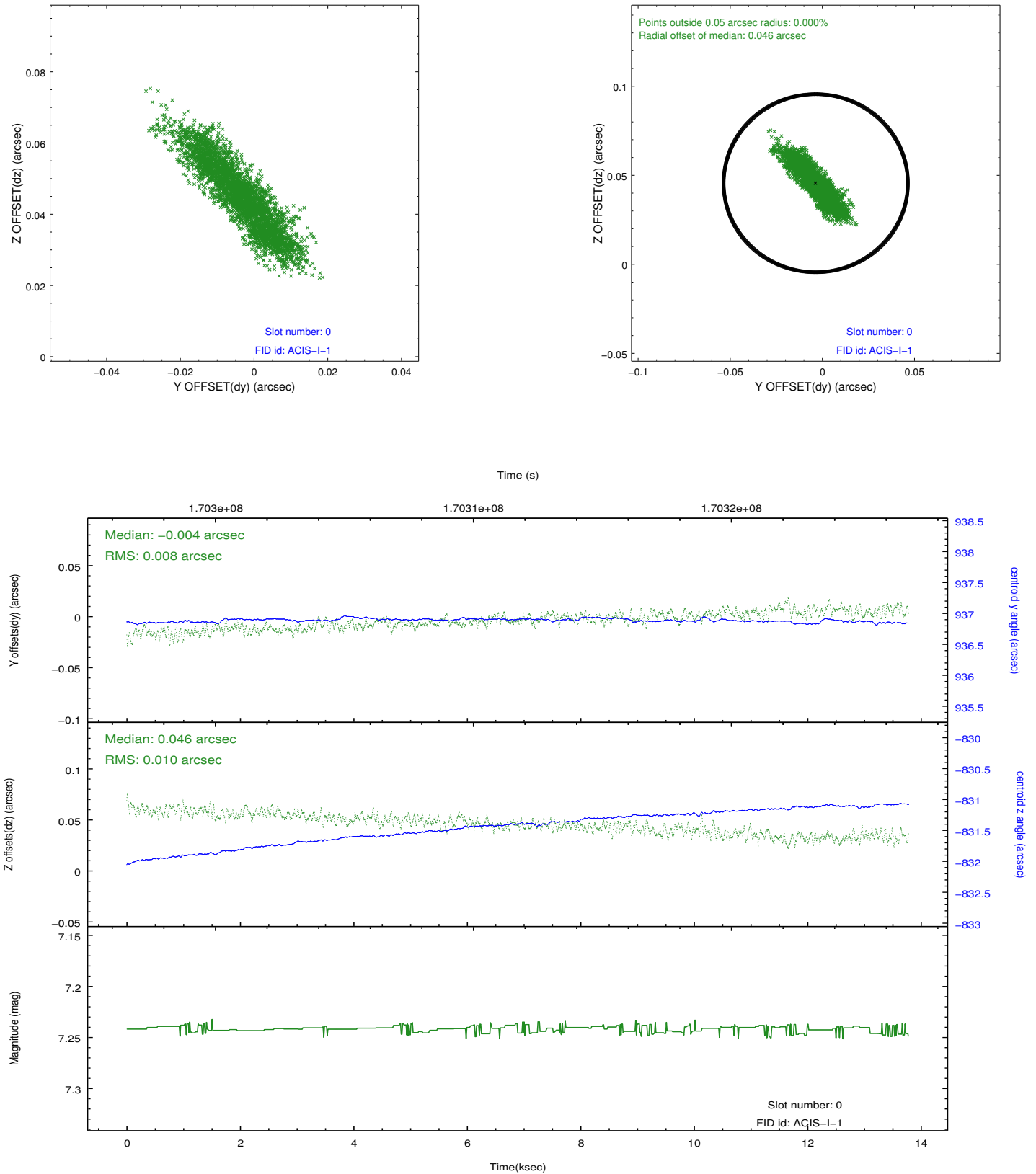


## 2.4.5 Slot 7

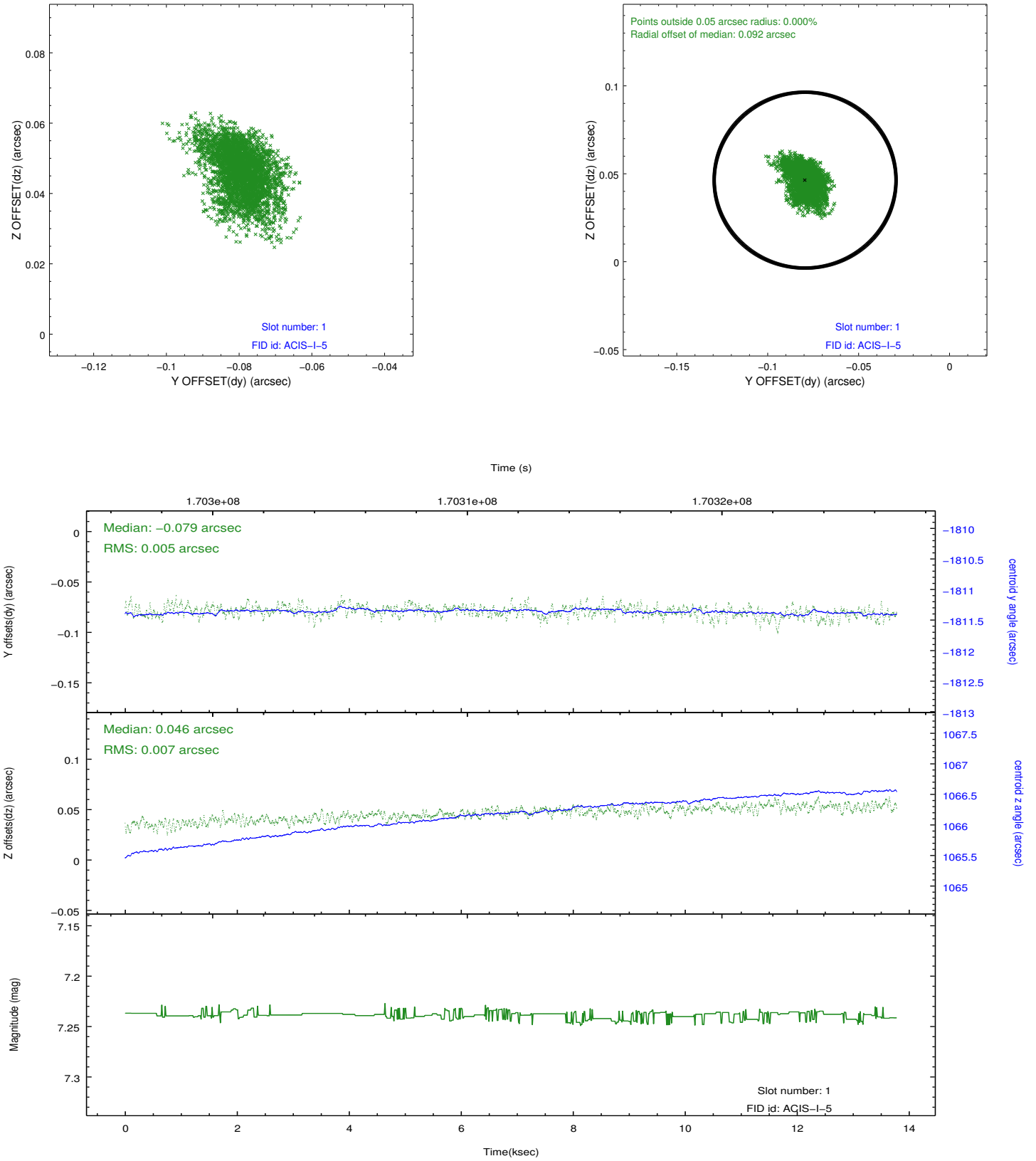


## 2.5 FID Slots

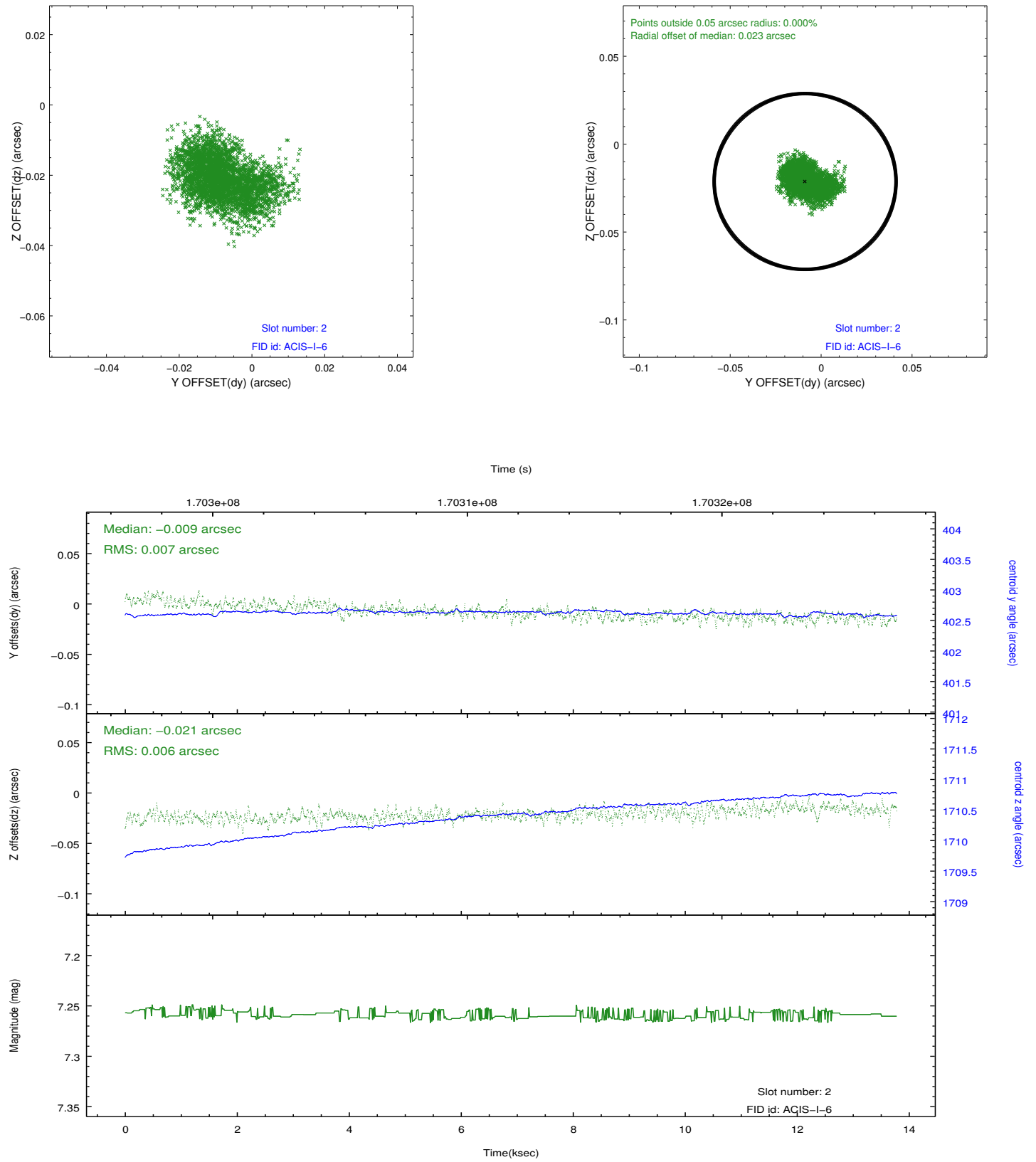
### 2.5.1 Slot 0



## 2.5.2 Slot 1



### 2.5.3 Slot 2



## A Summary

### A.1 Status

V&V Scientist	Jen Lauer
V&V Date (YYYY-MM-DD)	2012.11.15
V&V Edition	1
V&V Disposition and Status	OK
V&V Charge Time	13.468

### A.2 Comments