

V&V Reference Report

L2 ASCDS Version : 7.6.8

Observation 3793 - L2 Version 001
Chandra X-Ray Center

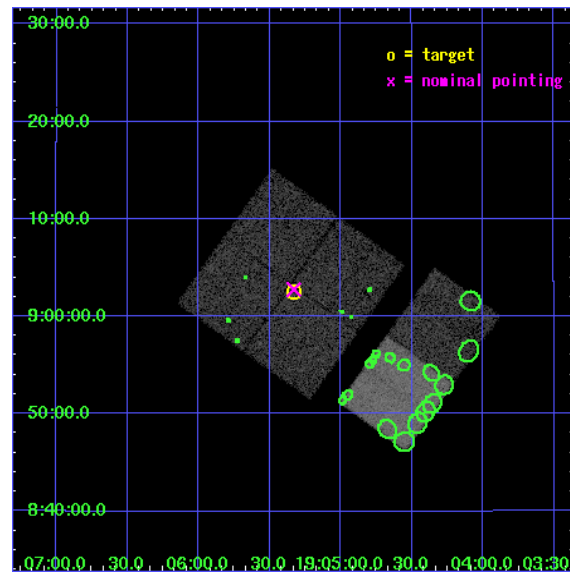
L2 Processing Date : Aug 2 2006

Contents

1	Front	2
2	OBI	3
2.1	OBI	3
2.1.1	Images	3
2.1.2	Bias	3
2.1.3	Parameters	4
2.1.4	Events	4
2.2	Compared Parameters	5
2.3	Aspect	6
2.4	Star Slots	9
2.4.1	Slot 3	9
2.4.2	Slot 4	10
2.4.3	Slot 5	11
2.4.4	Slot 6	12
2.4.5	Slot 7	13
2.5	FID Slots	14
2.5.1	Slot 0	14
2.5.2	Slot 1	15
2.5.3	Slot 2	16
3	Point Sources	17
A	Summary	18
A.1	Status	18
A.2	Comments	18

1 Front

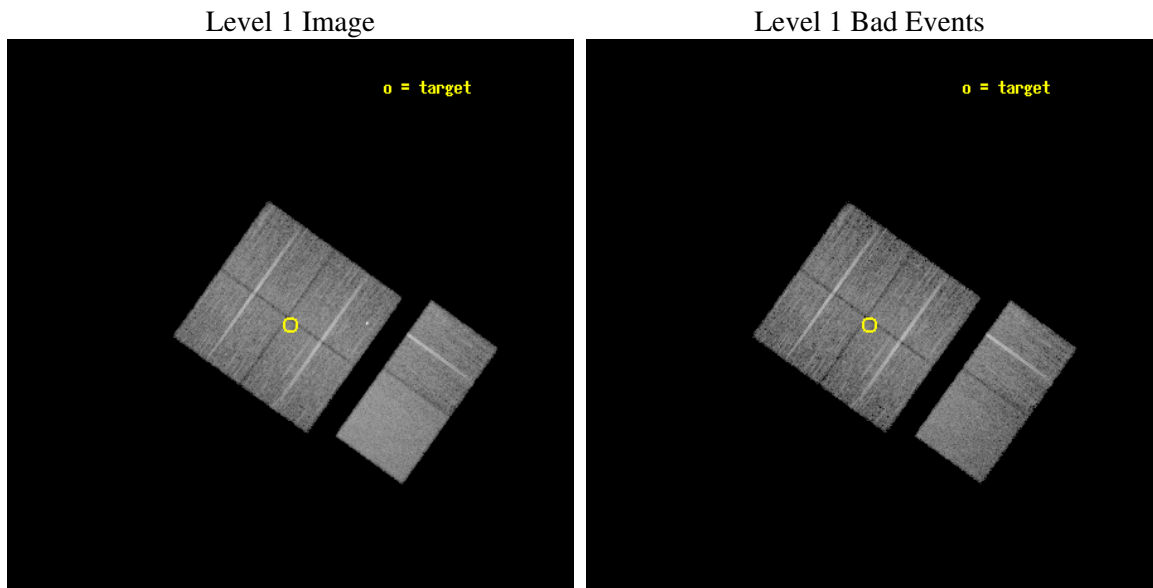
seq_num	400280
obs_id	3793
title	LOCALIZING THE TRANSIENT 89 SECOND PULSAR XTE J1906+09
observer	Dr. Richard Rothschild
object	XTE J1906+09
dtcycle	0
cycle	P
ra_targ	286.333333
dec_targ	9.041667
ra_nom	286.33235403878
dec_nom	9.0461791560035
roll_nom	125.55149976643
revision	2
ontime	13465.599949837
livetime	13295.090415261
ontime0	13462.358949631
ontime1	13465.599949837
ontime2	13465.599949837
ontime3	13465.599949837
ontime6	13465.599949837
ontime7	13465.599949837
l2events	87706



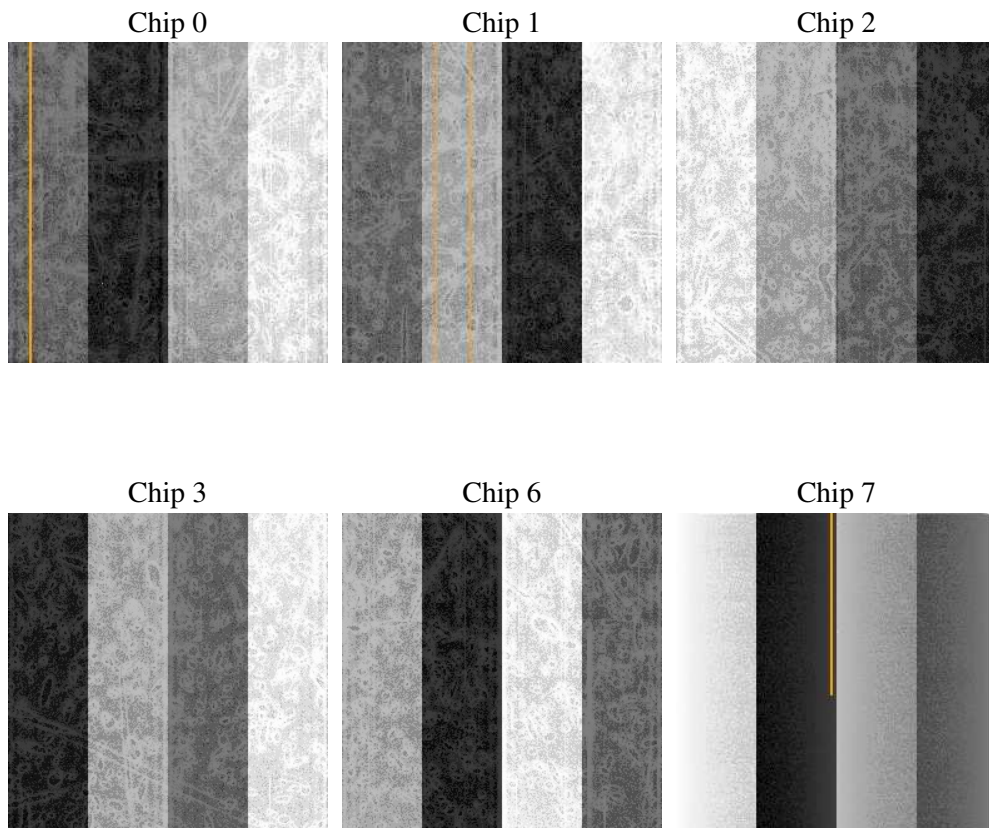
2 OBI

2.1 OBI

2.1.1 Images



2.1.2 Bias



2.1.3 Parameters

obi_num	0
ascdsver	7.6.8
caldbver	3.2.2
date	2006-08-03T02:14:22
revision	2

sched_exp_time	13500.000000
ontime	13469.618751436
ontime0	13466.377751231
ontime1	13469.618751436
ontime2	13469.618751436
ontime3	13469.618751436
ontime6	13469.618751436
ontime7	13469.618751436
l1events	533526

2.1.4 Events

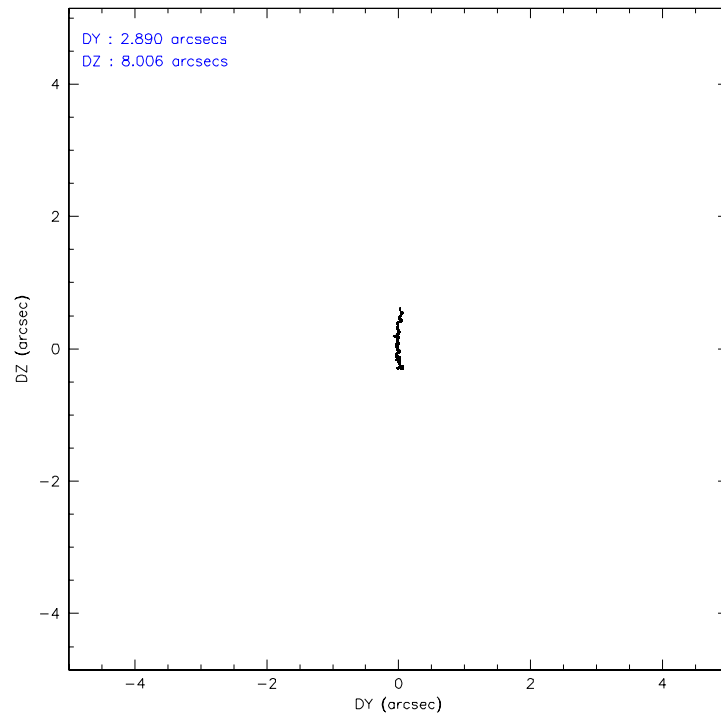
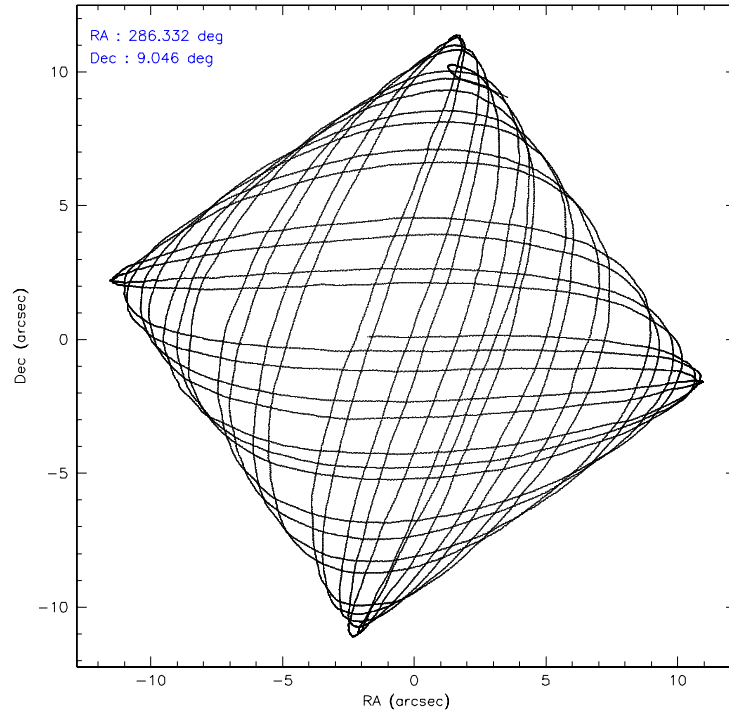
	ccd 0	ccd 1	ccd 2	ccd 3	ccd 6	ccd 7
level 1 events	79281	81338	86837	82682	89711	113677
rejected events	68924	70444	75599	72560	79421	70727
rejected %	86%	86%	87%	87%	88%	62%

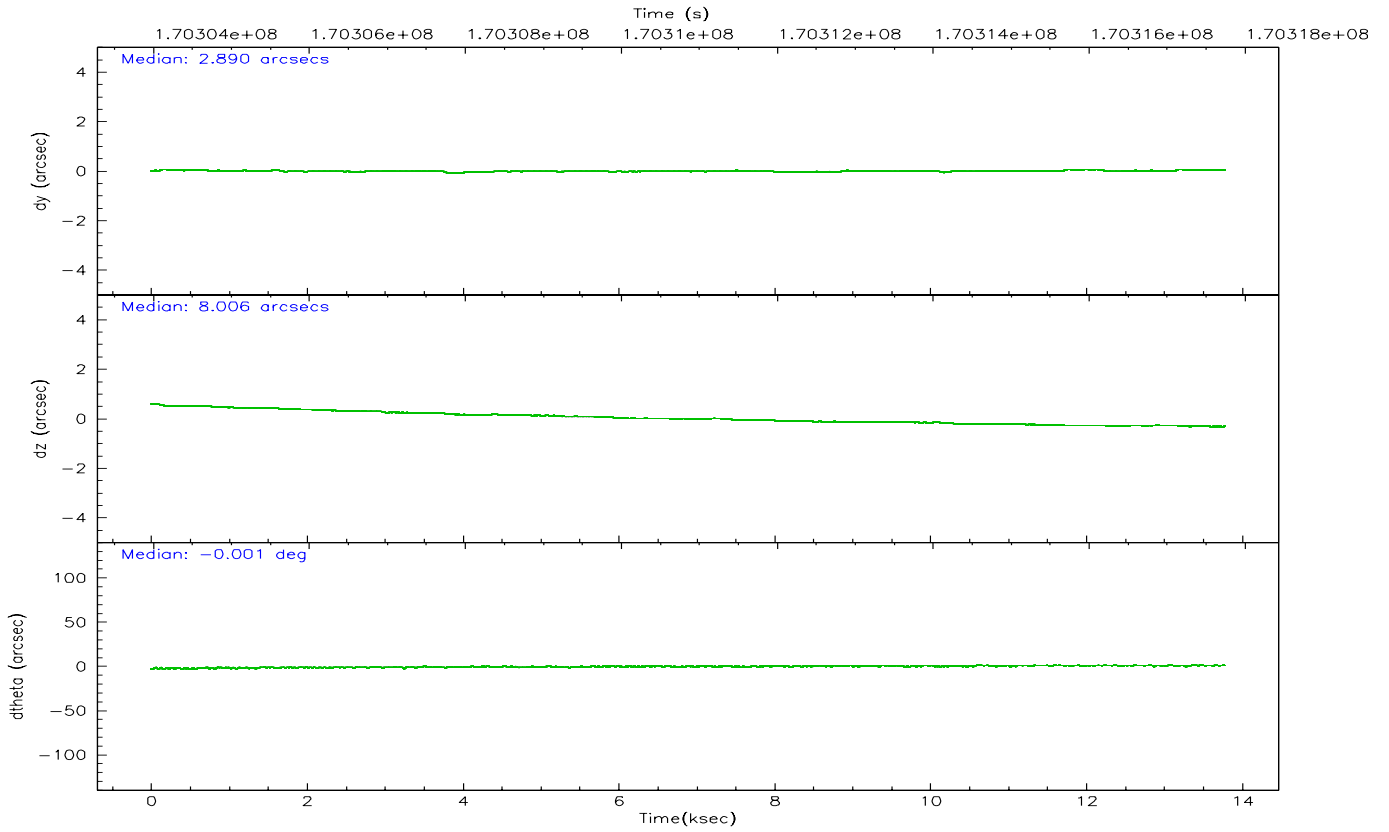
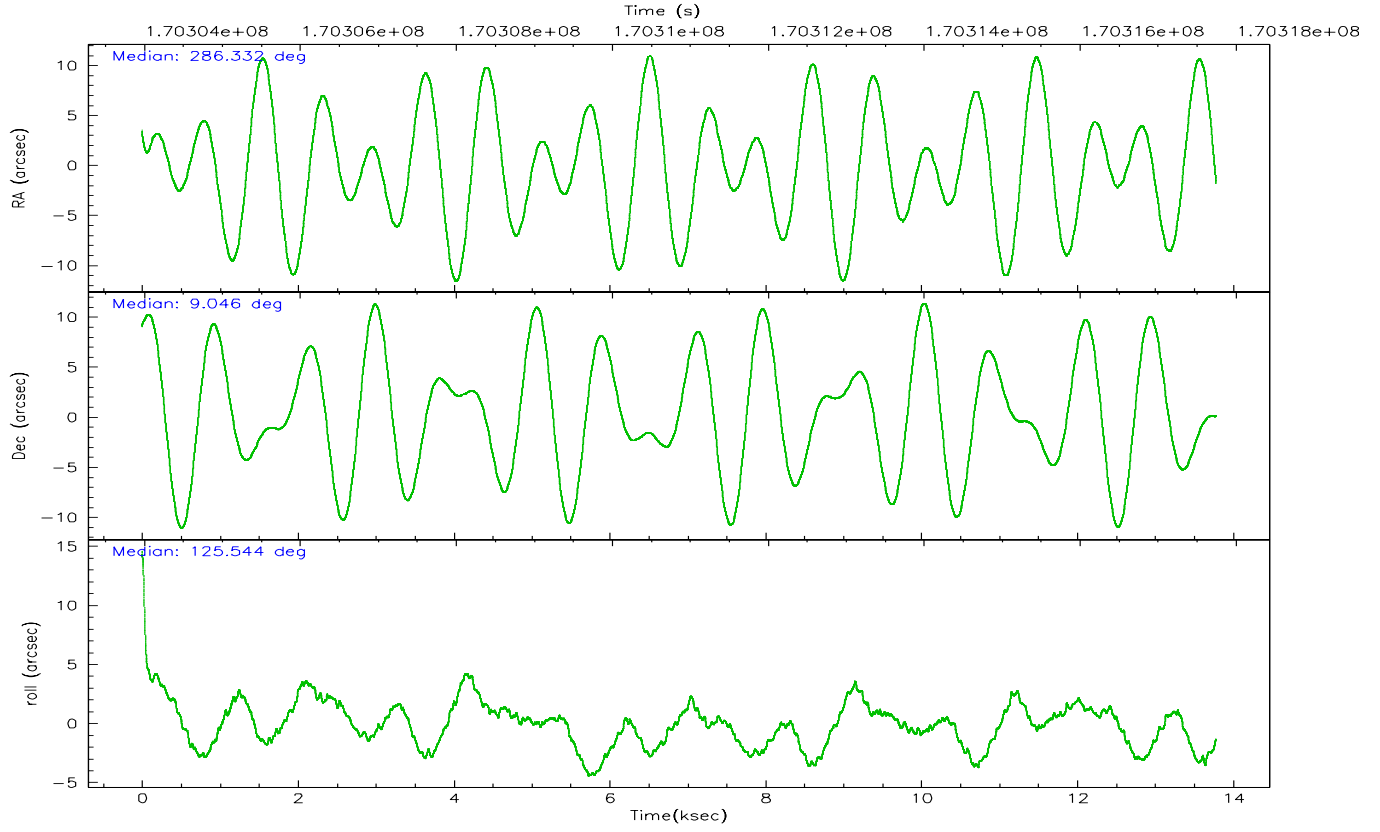
	ccd 0	ccd 1	ccd 2	ccd 3	ccd 6	ccd 7
grade 0 events	4453	4408	5283	4456	4168	2298
	5%	5%	6%	5%	4%	2%
grade 1 events	39	55	53	58	43	54
	0%	0%	0%	0%	0%	0%
grade 2 events	2140	2235	2080	1873	2095	10602
	2%	2%	2%	2%	2%	9%
grade 3 events	1056	1062	1025	980	1007	2245
	1%	1%	1%	1%	1%	1%
grade 4 events	938	1122	1004	1022	935	2157
	1%	1%	1%	1%	1%	1%
grade 5 events	3272	3441	3269	3800	4052	7683
	4%	4%	3%	4%	4%	6%
grade 6 events	1774	2070	1848	1793	2092	25661
	2%	2%	2%	2%	2%	22%
grade 7 events	65609	66945	72275	68700	75319	62977
	82%	82%	83%	83%	83%	55%

2.2 Compared Parameters

Parameter	Planned	Actual	Parameter	Planned	Actual
Instrument	ACIS	ACIS	Obspar format version number	6	6
Detector	ACIS-012367	ACIS-012367	Obspar file type	PREDICTED	ACTUAL
Grating	NONE	NONE	Obspar update status	NONE	UPDATED
Data mode	FAINT	FAINT	On-chip summing requested	N	N
Observation mode	POINTING	POINTING	Subarray requested	NONE	NONE
Pointing RA	286.357599	286.3323540387846	Alternating exposures requested	N	N
Pointing Dec	9.034955	9.046179156003525	Primary exposure time	0.000000	3.2
Pointing Roll	125.338834	125.5514997664345			
SIM focus pos (mm)	-0.782348	-0.7809083437167272			
SIM defocus (mm)	0	0.001439871863259334			
SIM translation stage pos (mm)	-233.592463	-233.5874344608287			
SIM translation stage offset (mm)	0	-0.005018542100998502			
Observation start time	170304247.184000	170303239.22016			
Observation start date	2003-05-26T02:43:03	2003-05-26T02:27:19			
Observation end time	170317747.184000	170319562.34585			
Observation end date	2003-05-26T06:28:03	2003-05-26T06:59:22			
Read mode	TIMED	TIMED			

2.3 Aspect



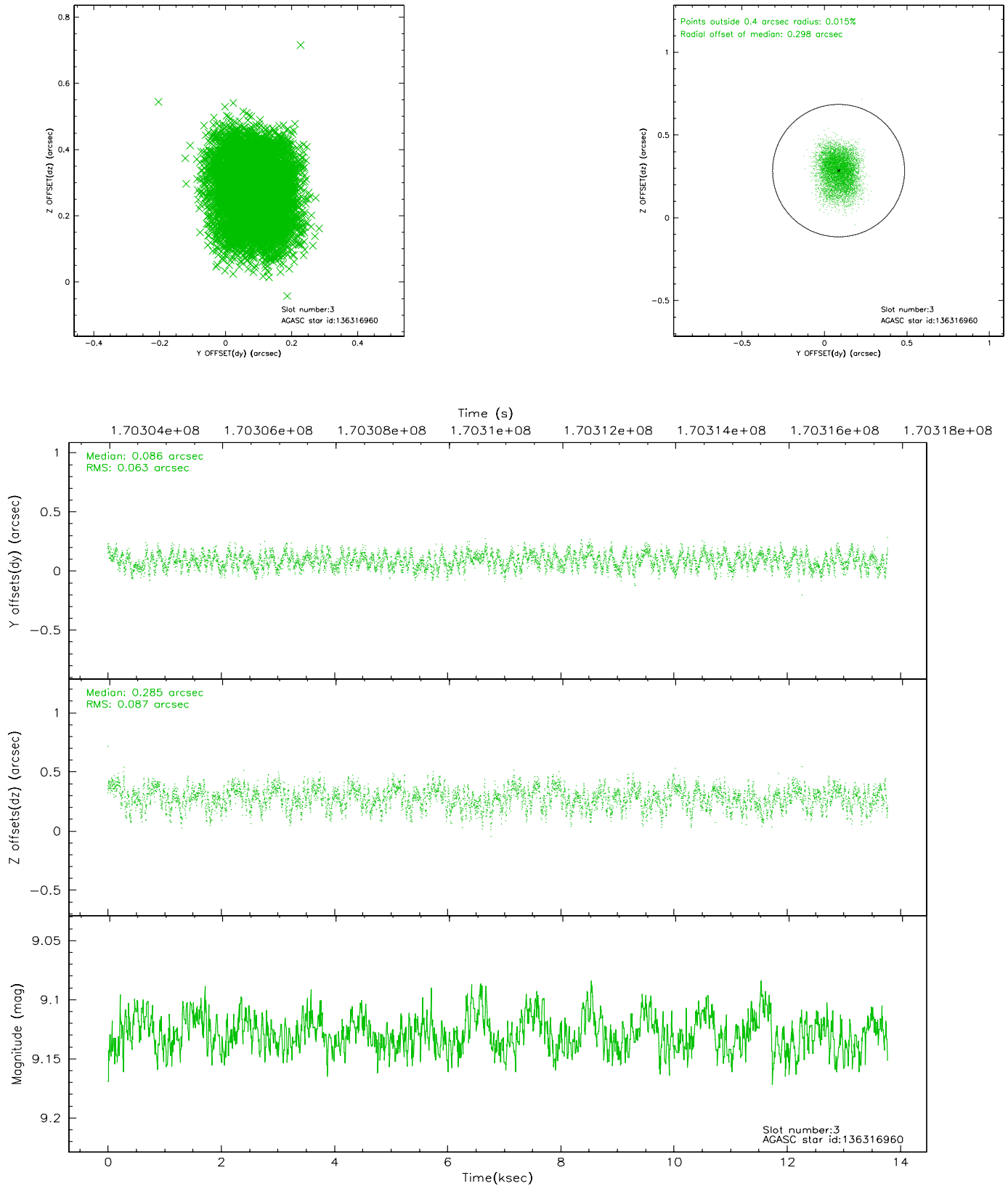


Slot Statistics

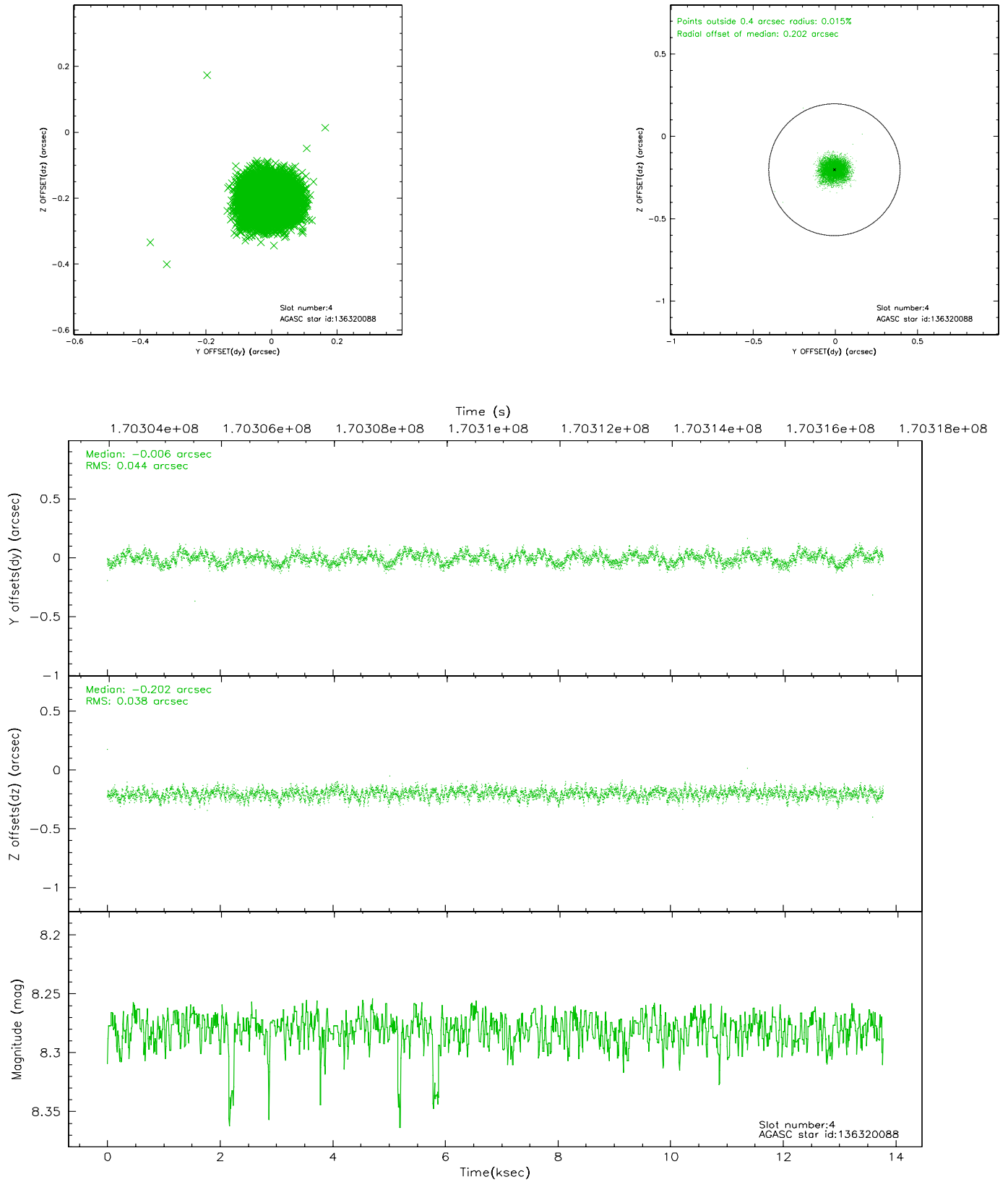
slot	status	id	mag	n_pts	med_dy	med_dz	dr1	dr2	ra	dec	mean_y	mean_z
0	FID	ACIS-I-1	7.24	3362	-0.024	0.072	0.014	0.023	0.000000	0.000000	936.87	-831.40
1	FID	ACIS-I-5	7.24	3362	-0.049	0.039	0.009	0.015	0.000000	0.000000	-1811.05	1065.91
2	FID	ACIS-I-6	7.26	3362	-0.019	-0.041	0.009	0.015	0.000000	0.000000	402.08	1710.70
3	GUIDE	136316960	9.13	6720	0.086	0.285	0.115	0.181	287.104881	9.133555	-1243.95	-2373.16
4	GUIDE	136320088	8.28	6713	-0.006	-0.202	0.063	0.098	285.930295	8.779864	130.75	1770.64
5	GUIDE	136323816	8.11	6725	0.228	-0.347	0.072	0.109	286.124291	8.296375	-1687.95	2215.94
6	GUIDE	136845920	7.29	6725	-0.121	0.101	0.075	0.113	286.285607	9.642131	1930.92	-1054.87
7	GUIDE	136844512	7.40	6723	-0.181	0.174	0.080	0.127	286.436543	9.770401	1998.40	-1759.21

2.4 Star Slots

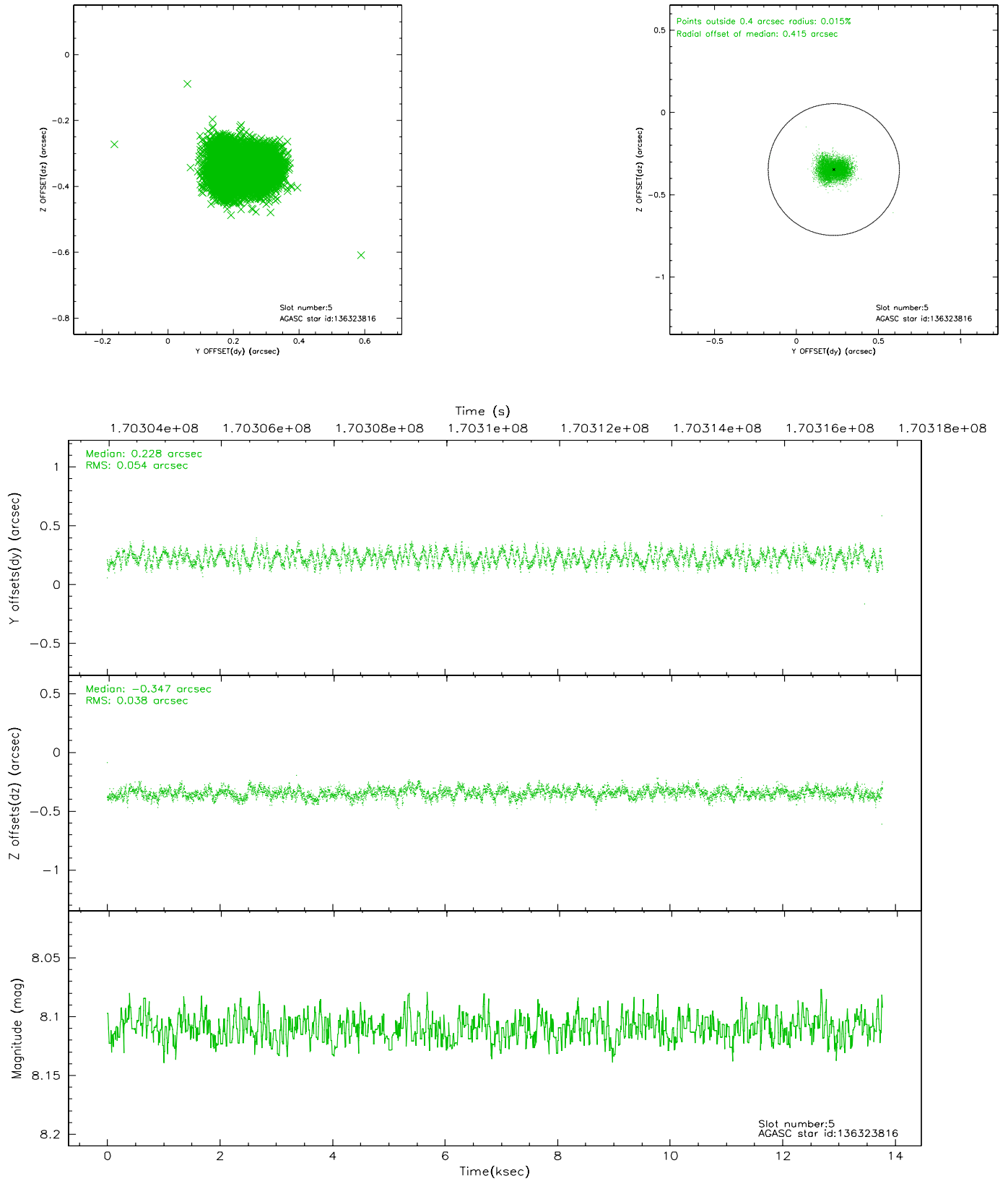
2.4.1 Slot 3



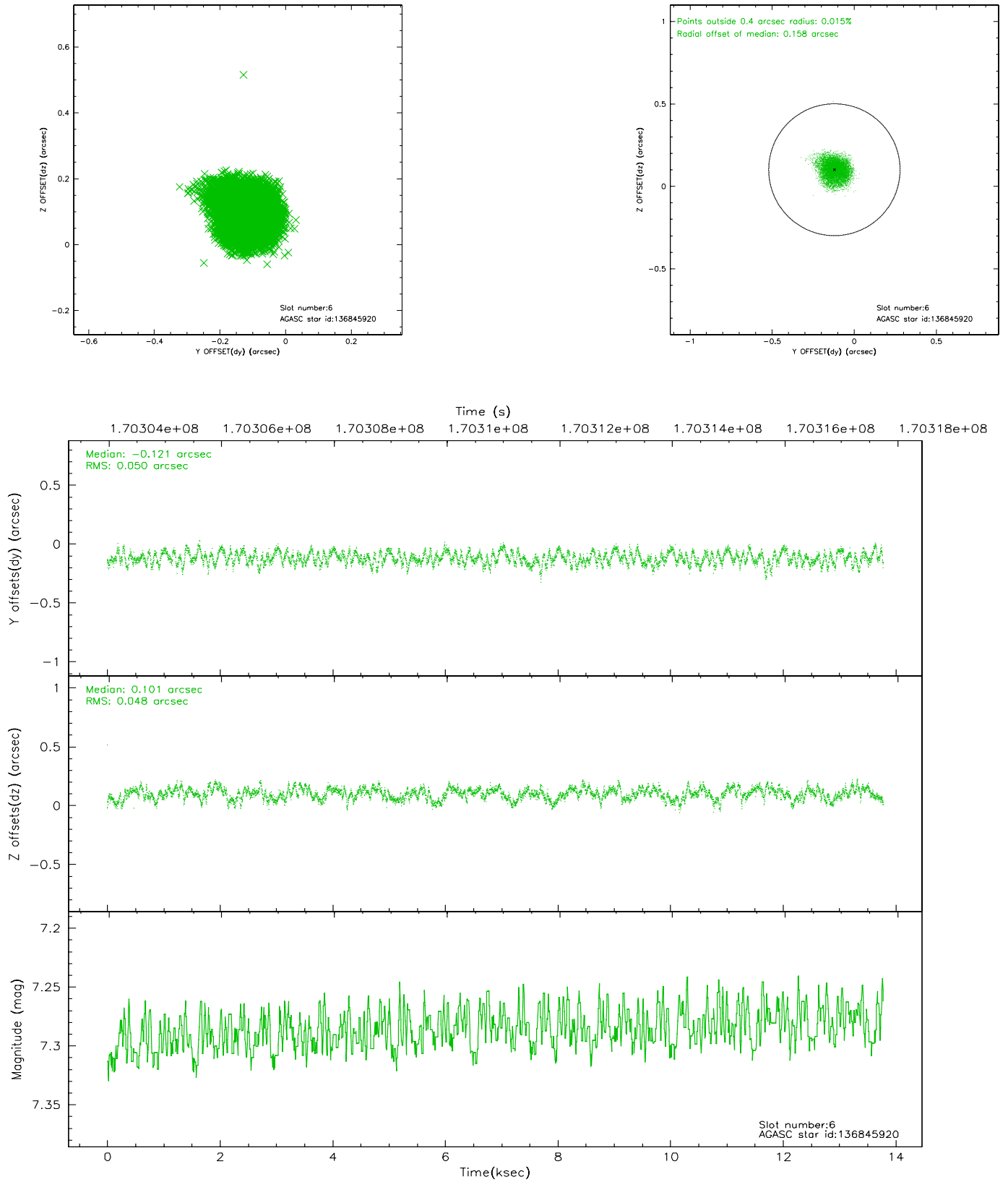
2.4.2 Slot 4



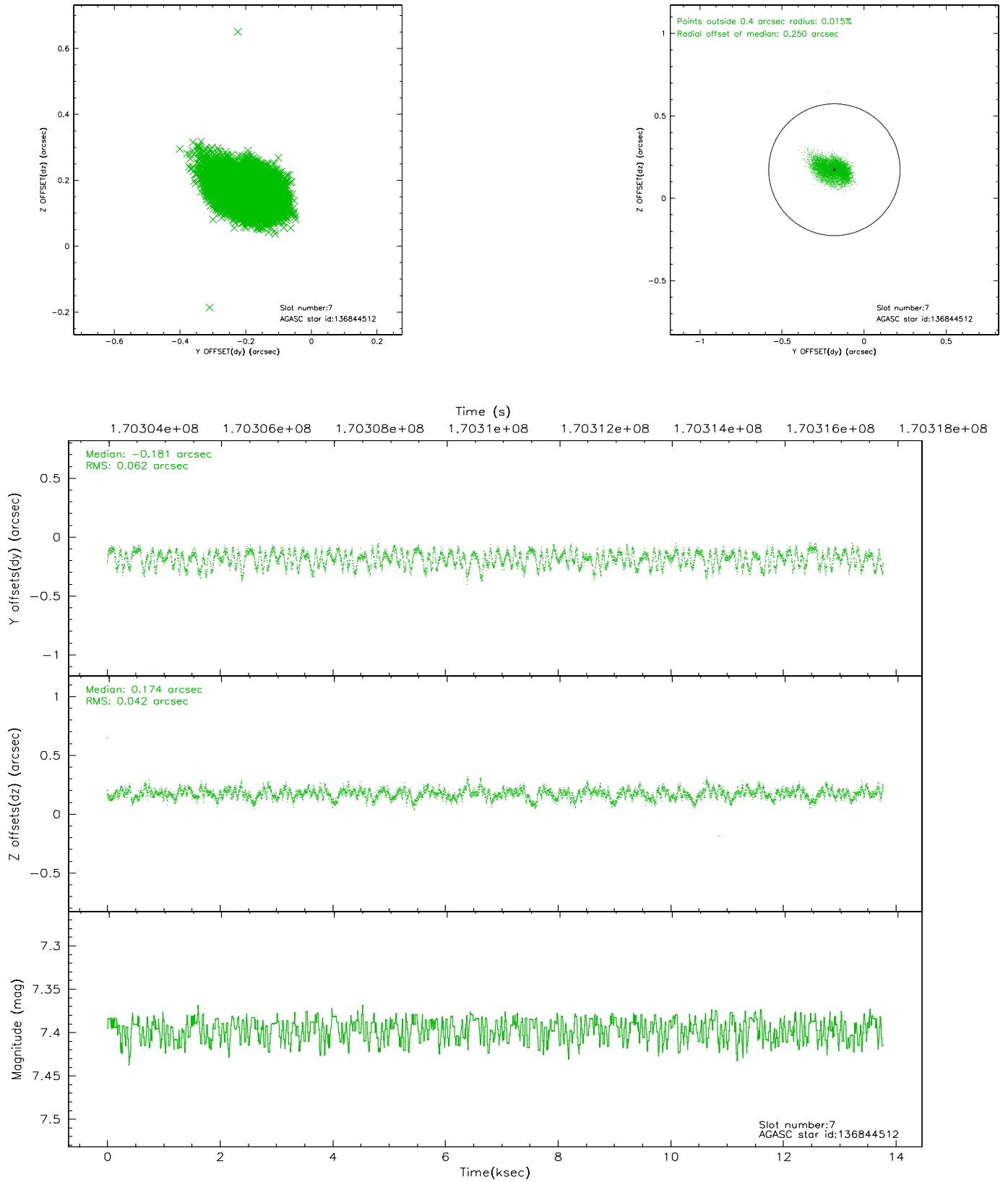
2.4.3 Slot 5



2.4.4 Slot 6

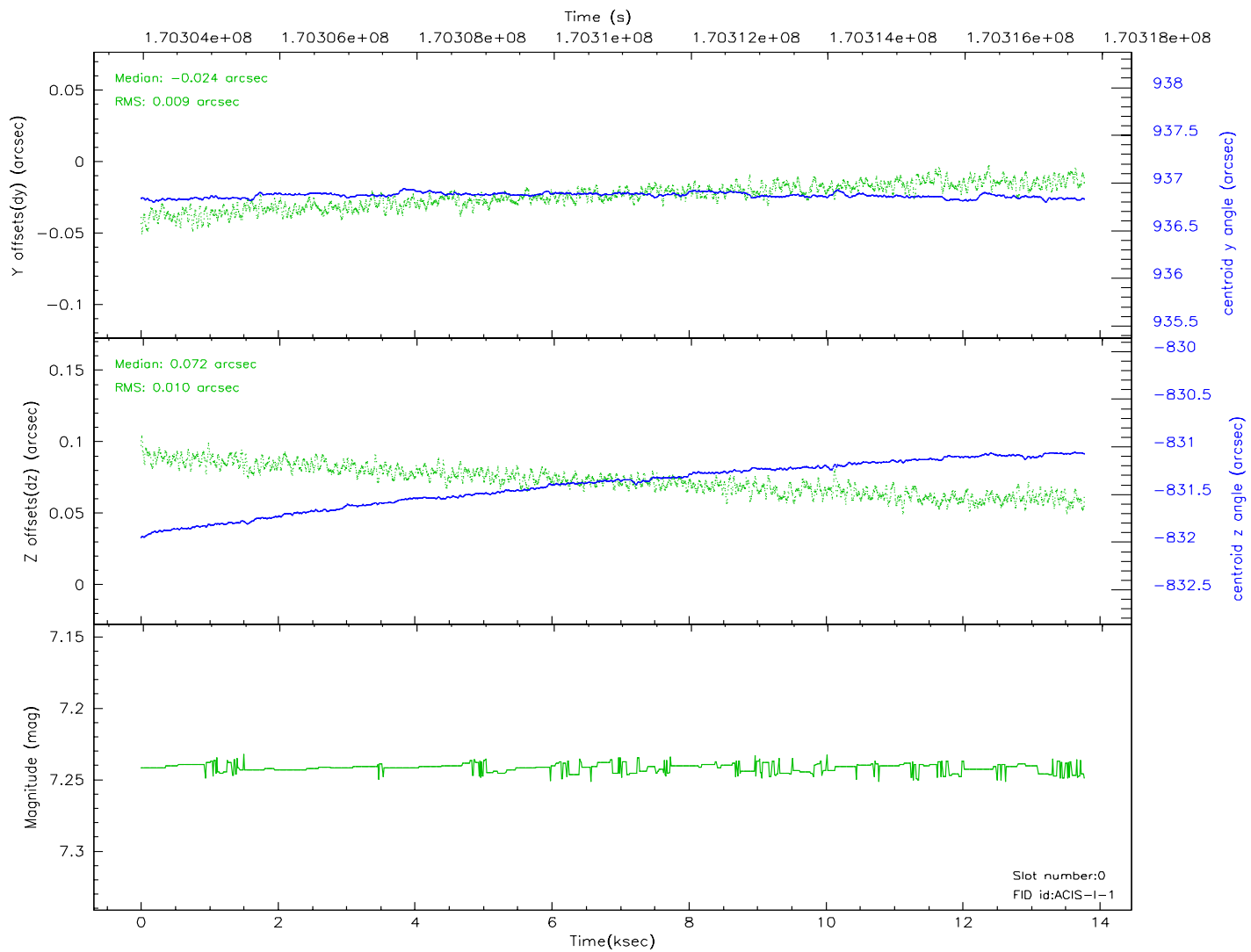
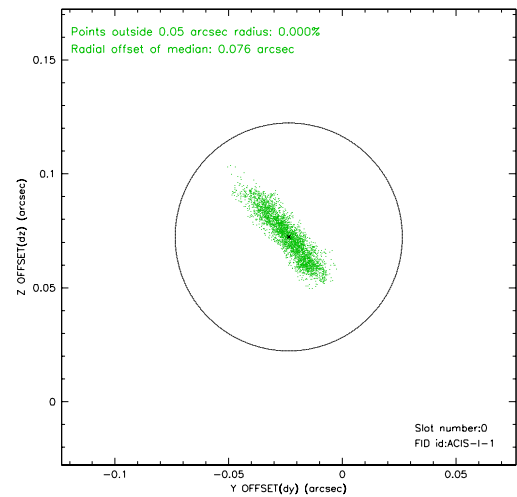
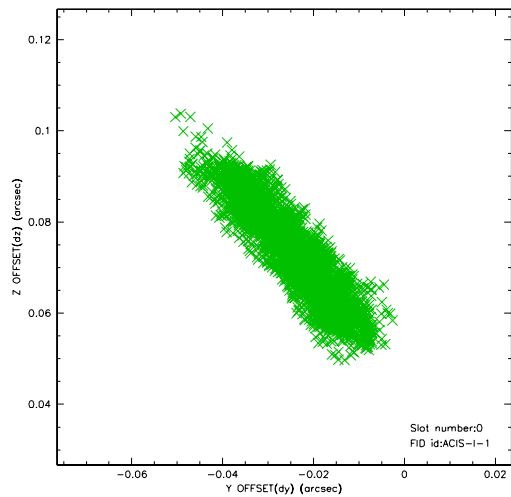


2.4.5 Slot 7

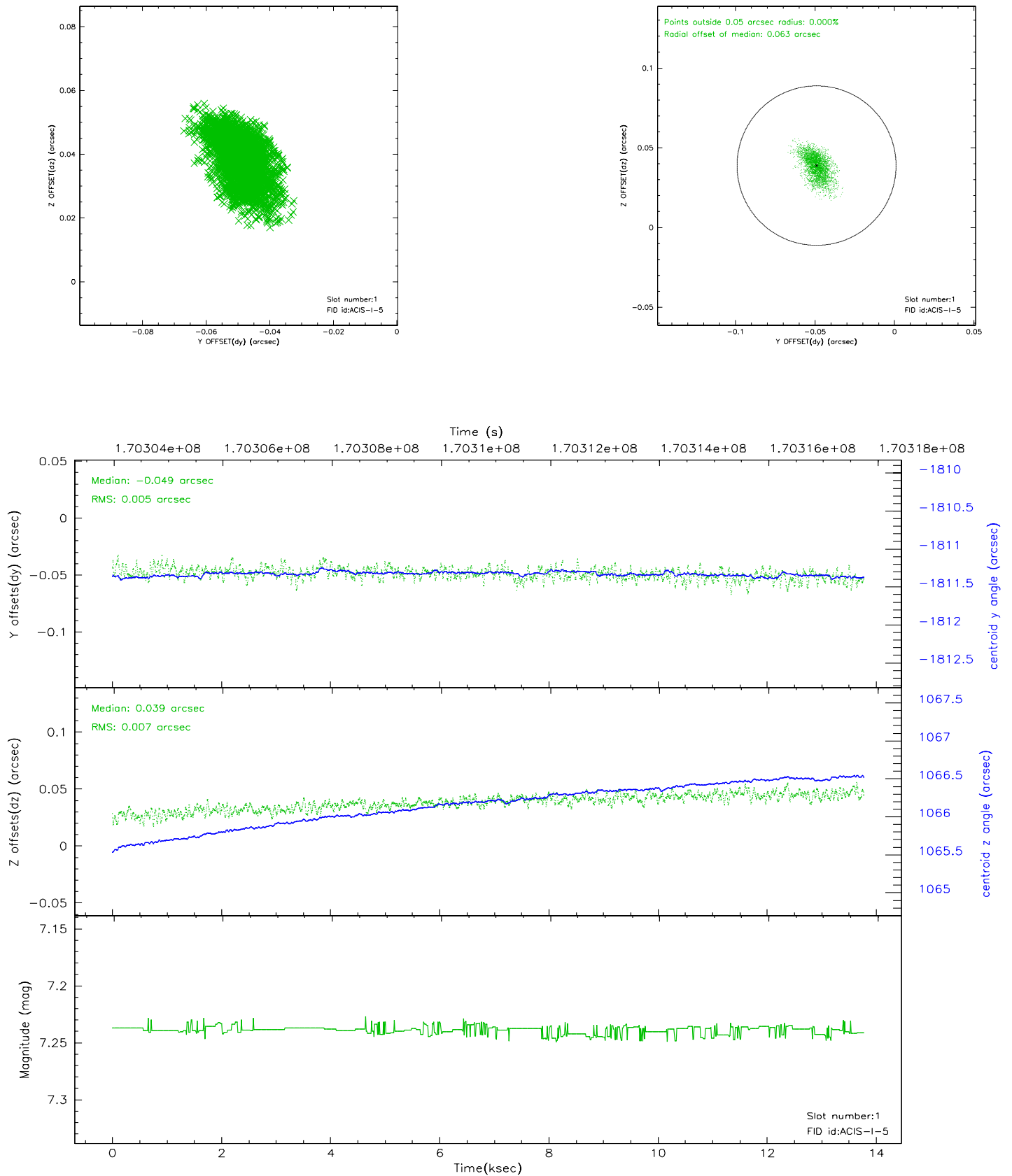


2.5 FID Slots

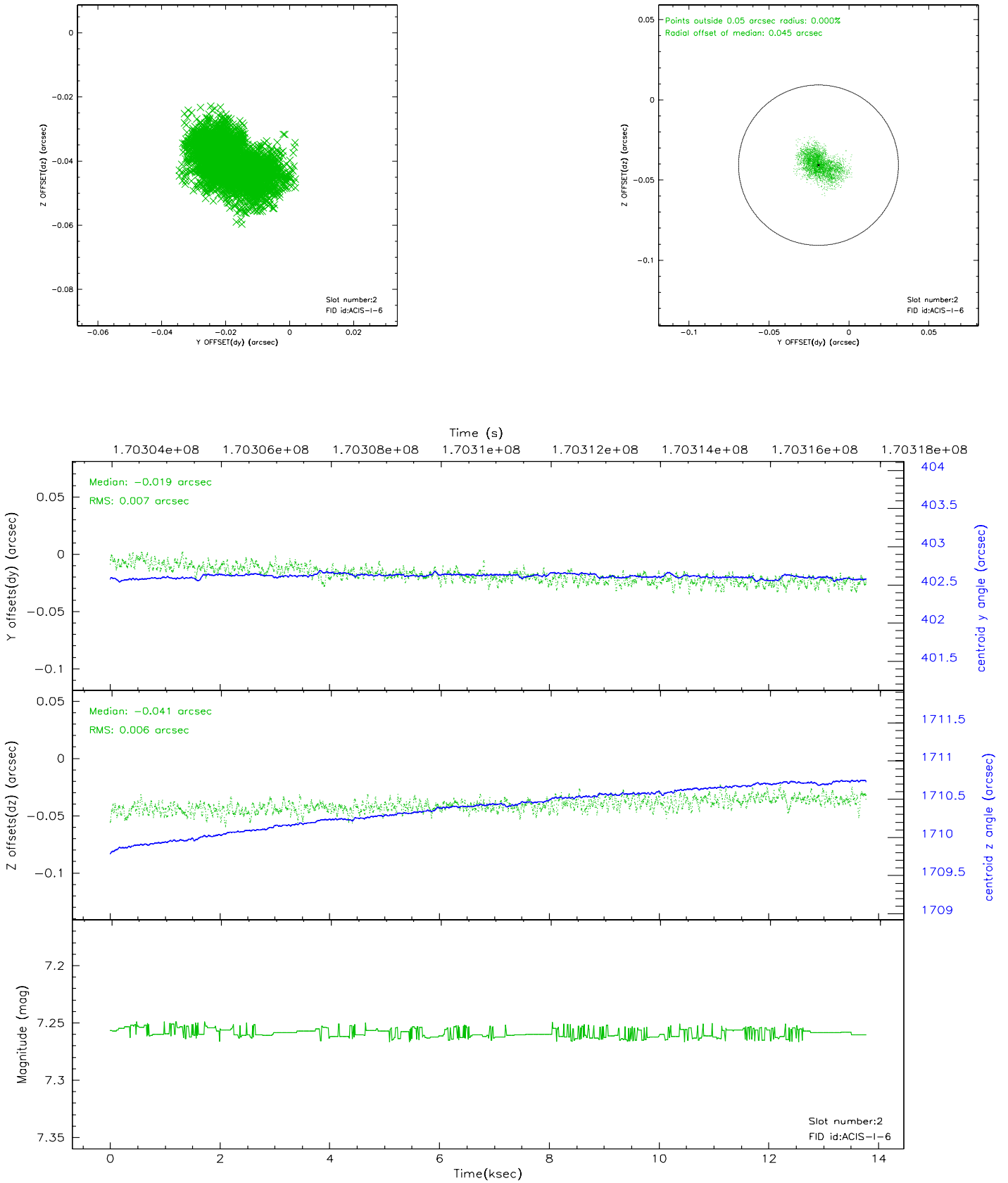
2.5.1 Slot 0



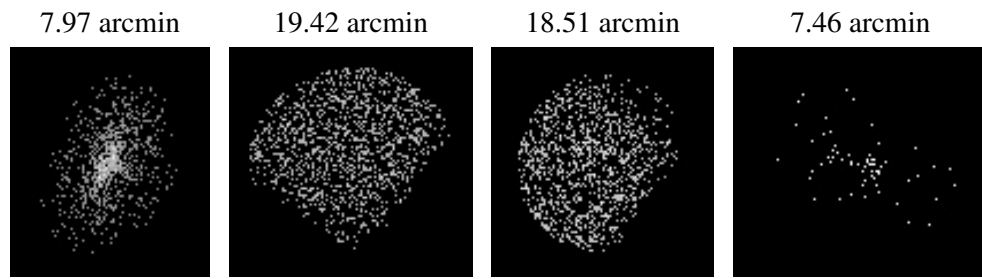
2.5.2 Slot 1



2.5.3 Slot 2



3 Point Sources



A Summary

A.1 Status

V&V Scientist	Beth Sundheim
V&V Date (YYYY-MM-DD)	2006.08.03
V&V Edition	1
V&V Disposition and Status	OK
V&V Charge Time	13.468

A.2 Comments