

# V&V Reference Report

## L2 ASCDS Version : 7.6.8

Observation 3683 - L2 Version 001  
Chandra X-Ray Center

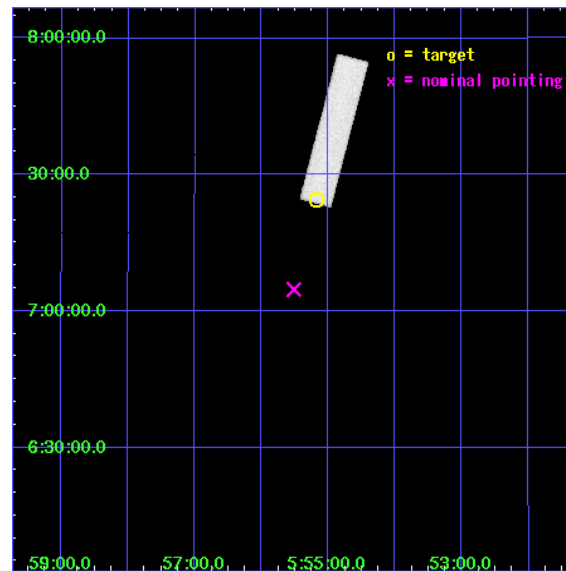
L2 Processing Date : Jul 20 2006

## Contents

<b>1</b>	<b>Front</b>	<b>2</b>
<b>2</b>	<b>OBI</b>	<b>3</b>
2.1	OBI . . . . .	3
2.1.1	Images . . . . .	3
2.1.2	Parameters . . . . .	4
2.1.3	Events . . . . .	4
2.2	Compared Parameters . . . . .	5
2.3	Aspect . . . . .	6
2.4	Star Slots . . . . .	9
2.4.1	Slot 3 . . . . .	9
2.4.2	Slot 4 . . . . .	10
2.4.3	Slot 5 . . . . .	11
2.4.4	Slot 6 . . . . .	12
2.4.5	Slot 7 . . . . .	13
2.5	FID Slots . . . . .	14
2.5.1	Slot 0 . . . . .	14
2.5.2	Slot 1 . . . . .	15
2.5.3	Slot 2 . . . . .	16
<b>3</b>	<b>Point Sources</b>	<b>17</b>
<b>A</b>	<b>Summary</b>	<b>18</b>
A.1	Status . . . . .	18
A.2	Comments . . . . .	18

# 1 Front

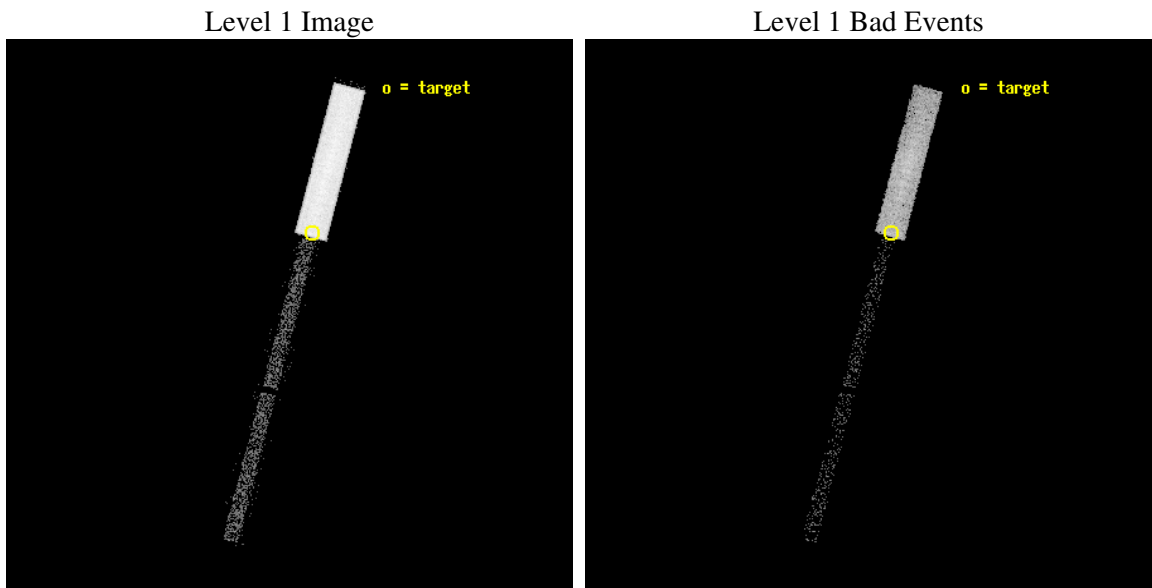
seq_num	290237
obs_id	3683
title	AO4 MEASUREMENTS OF THE OPTICAL/UV TRANSMISSION OF THE HRC AND ACIS FILTERS
observer	Dr. CXC Calibration
object	BETELGEUSE
ra_targ	88.792917
dec_targ	7.407056
ra_nom	88.878929630062
dec_nom	7.0799986561218
roll_nom	284.71332590419
revision	2
ontime	2143.5313399732
livetime	2132.873096809
l2events	72028



## 2 OBI

### 2.1 OBI

#### 2.1.1 Images



### 2.1.2 Parameters

obi_num	0
ascdsver	7.6.8
caldbver	3.2.2
date	2006-07-20T19:50:25
revision	2

sched_exp_time	2000.000000
ontime	2189.6563419104
l1events	115537

### 2.1.3 Events

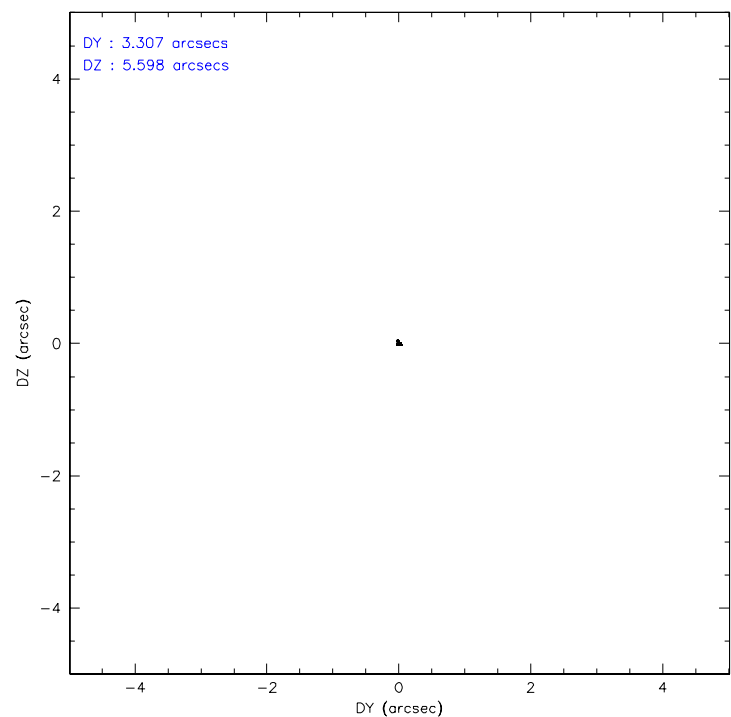
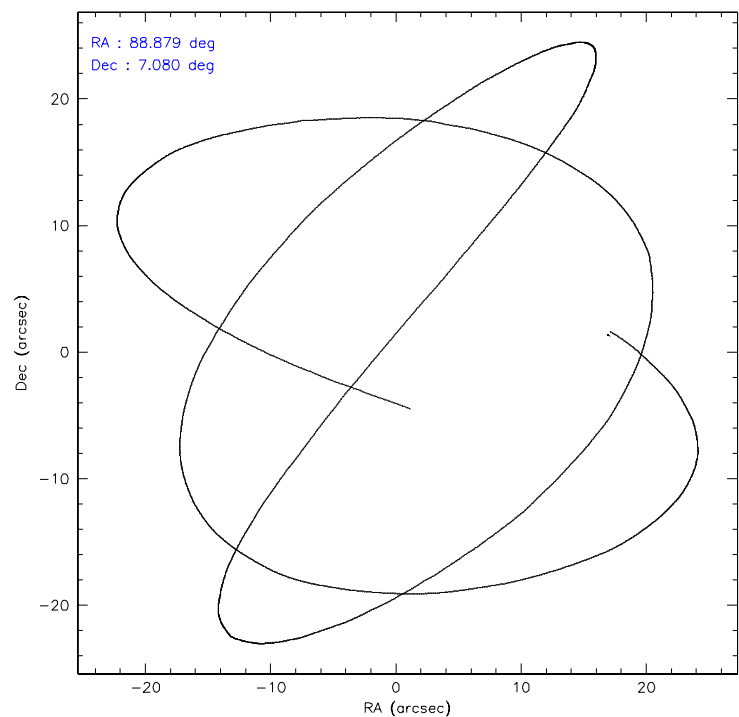
Level 1 Events

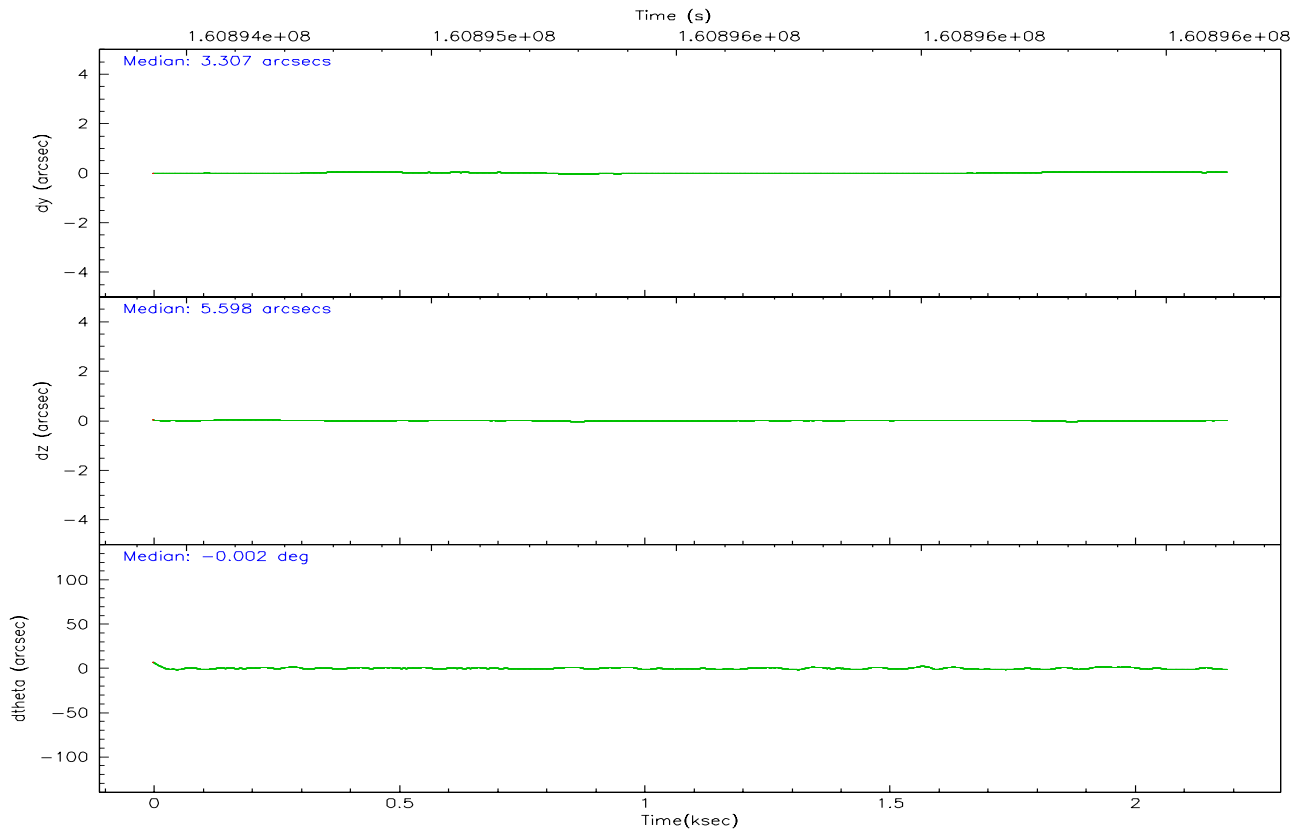
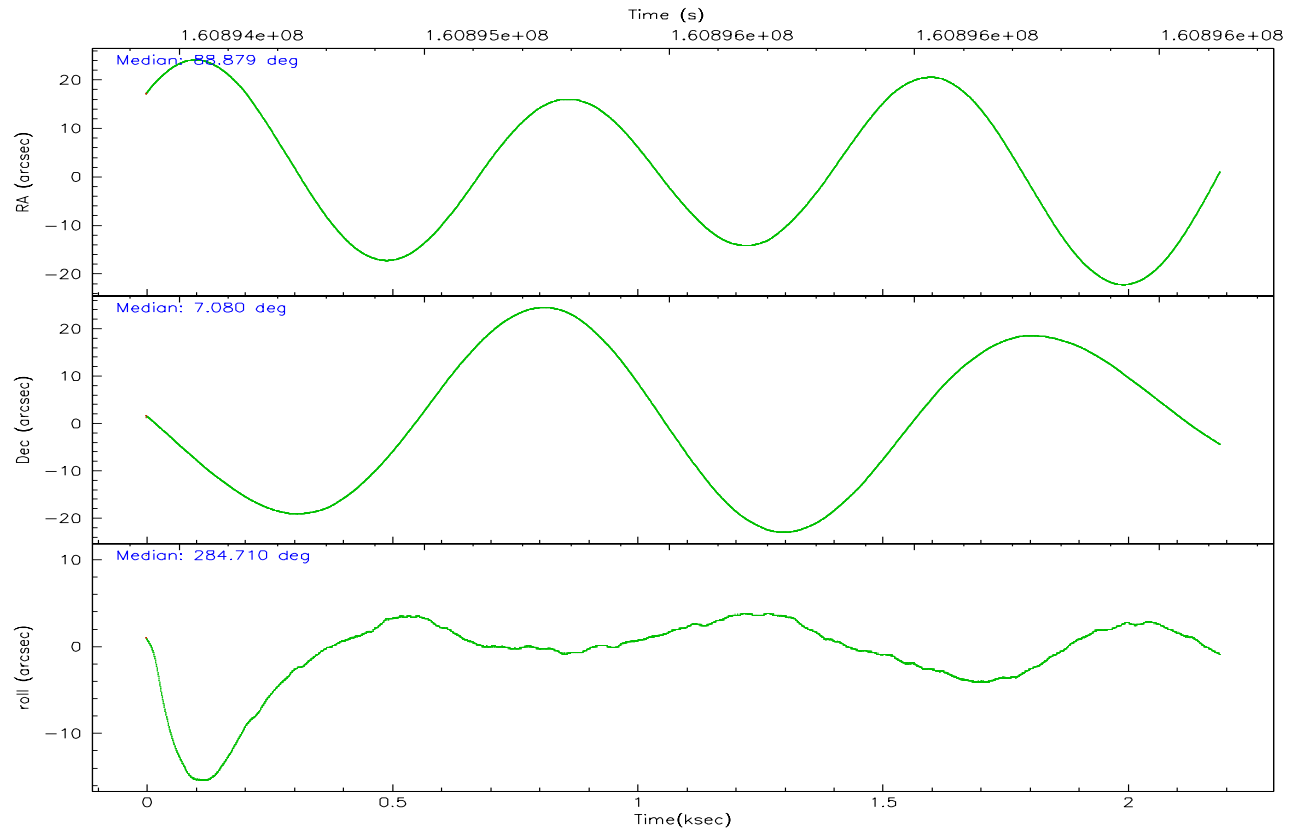
	<b>segment 1</b>	<b>segment 2</b>	<b>segment 3</b>
level 1 events	105300	8957	1280
rejected events	24240	8916	1280
rejected %	23%	99%	100%

## 2.2 Compared Parameters

Parameter	Planned	Actual	Parameter	Planned	Actual
Instrument	HRC	HRC	Obspar format version number	6	6
Detector	HRC-S	HRC-S	Obspar file type	PREDICTED	ACTUAL
Grating	NONE	NONE	Obspar update status	NONE	UPDATED
Data mode	OBSERVING	OBSERVING			
Observation mode	POINTING	POINTING			
Pointing RA	88.857706	88.87892963006183			
Pointing Dec	7.099302	7.079998656121839			
Pointing Roll	284.648537	284.7133259041893			
Window start time	160488064.184000	160488064.184000			
Window stop time	162820864.184000	162820864.184000			
SIM focus pos (mm)	-1.429586	-1.428180813131781			
SIM defocus (mm)	0.1037507710433287	0.1051558262725154			
SIM translation stage pos (mm)	250.455976	250.466033080201			
SIM translation stage offset (mm)	0	-0.01005468664627074			
Observation start time	160894620.184000	160894243.63577			
Observation start date	2003-02-06T04:55:56	2003-02-06T04:50:43			
Observation end time	160896620.184000	160896753.86087			
Observation end date	2003-02-06T05:29:16	2003-02-06T05:32:33			

2.3 Aspect





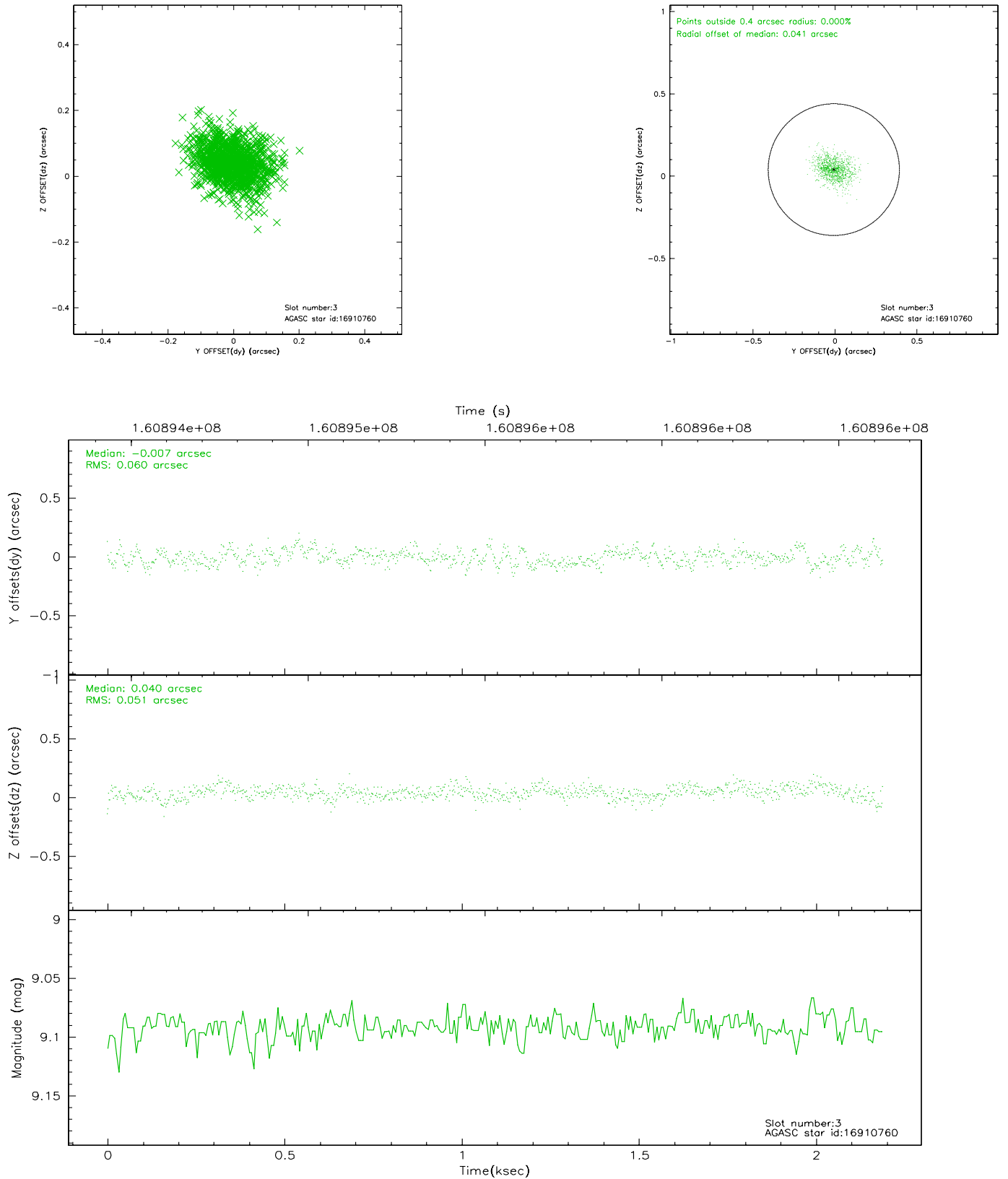
### Slot Statistics

slot	status	id	mag	n_pts	med_dy	med_dz	dr1	dr2	ra	dec	mean_y	mean_z
0	FID	HRC-S-2	7.01	535	0.112	-0.155	0.008	0.014	0.000000	0.000000	1242.28	-446.80
1	FID	HRC-S-3	7.02	534	0.142	-0.108	0.006	0.012	0.000000	0.000000	-1157.74	574.62
2	FID	HRC-S-4	6.96	535	0.151	-0.032	0.009	0.016	0.000000	0.000000	1238.75	579.12
3	GUIDE	16910760	9.09	1069	-0.007	0.040	0.082	0.137	89.059695	7.486642	-1166.91	1050.55
4	GUIDE	16917248	8.71	1068	0.138	0.138	0.066	0.104	89.306967	6.774731	1534.95	1260.17
5	GUIDE	93852536	9.63	1069	0.045	-0.076	0.099	0.167	88.414730	7.576698	-2061.66	-1093.30
6	GUIDE	93856056	7.98	1069	-0.188	-0.084	0.064	0.104	88.147460	7.547925	-2207.45	-2044.39
7	GUIDE	16918456	9.57	1068	0.013	-0.007	0.127	0.197	89.526896	7.059699	738.82	2275.98

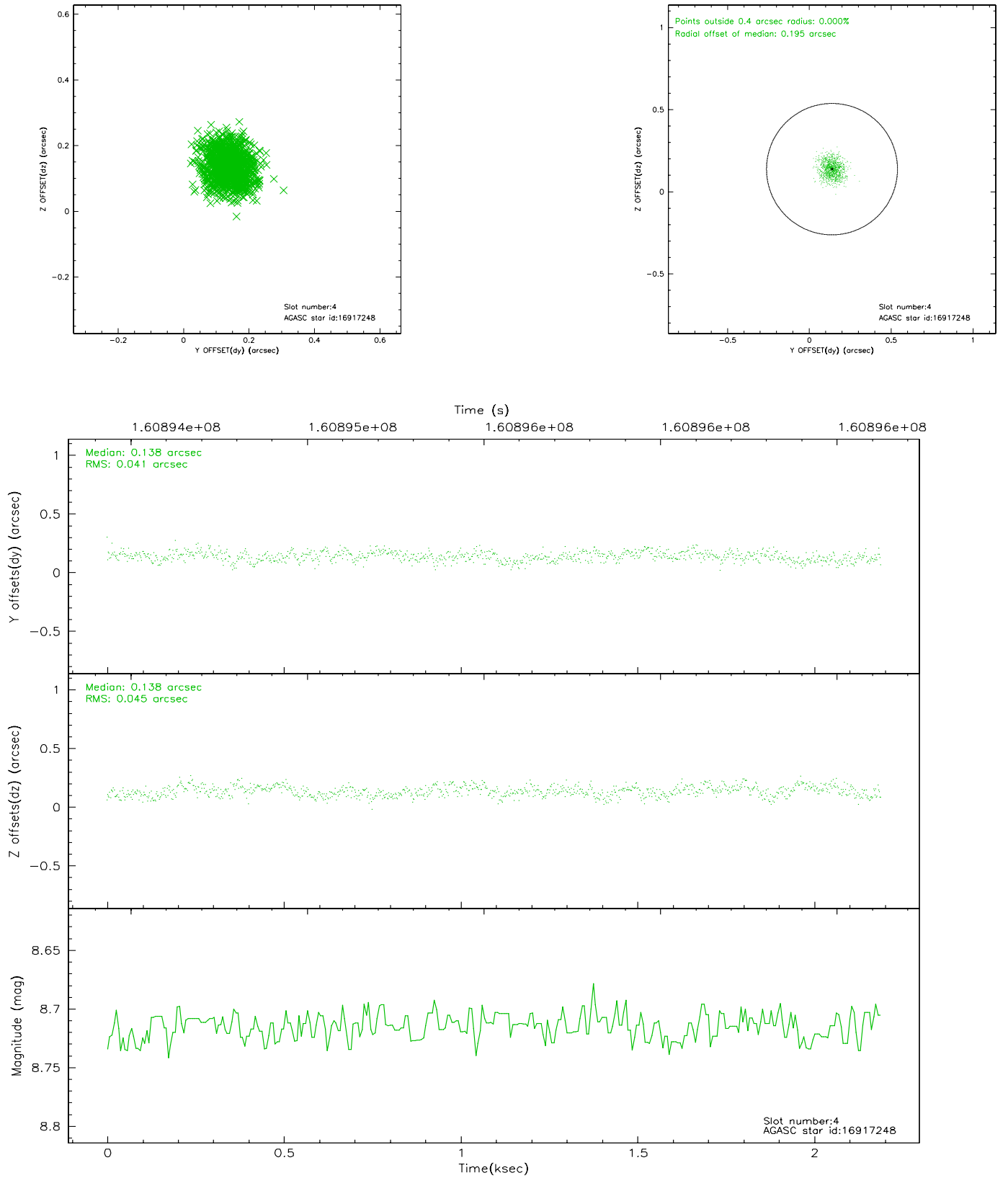


## 2.4 Star Slots

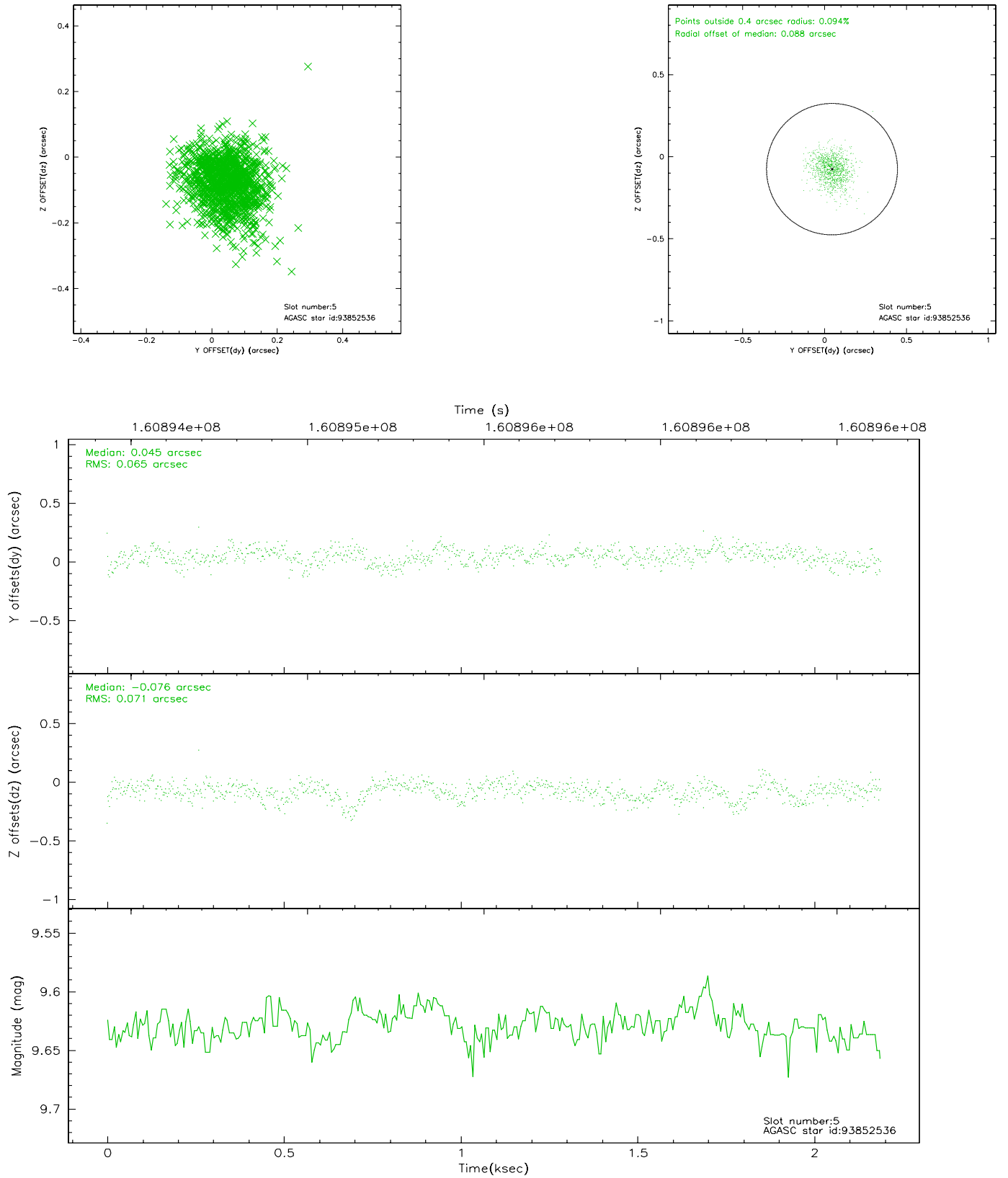
### 2.4.1 Slot 3



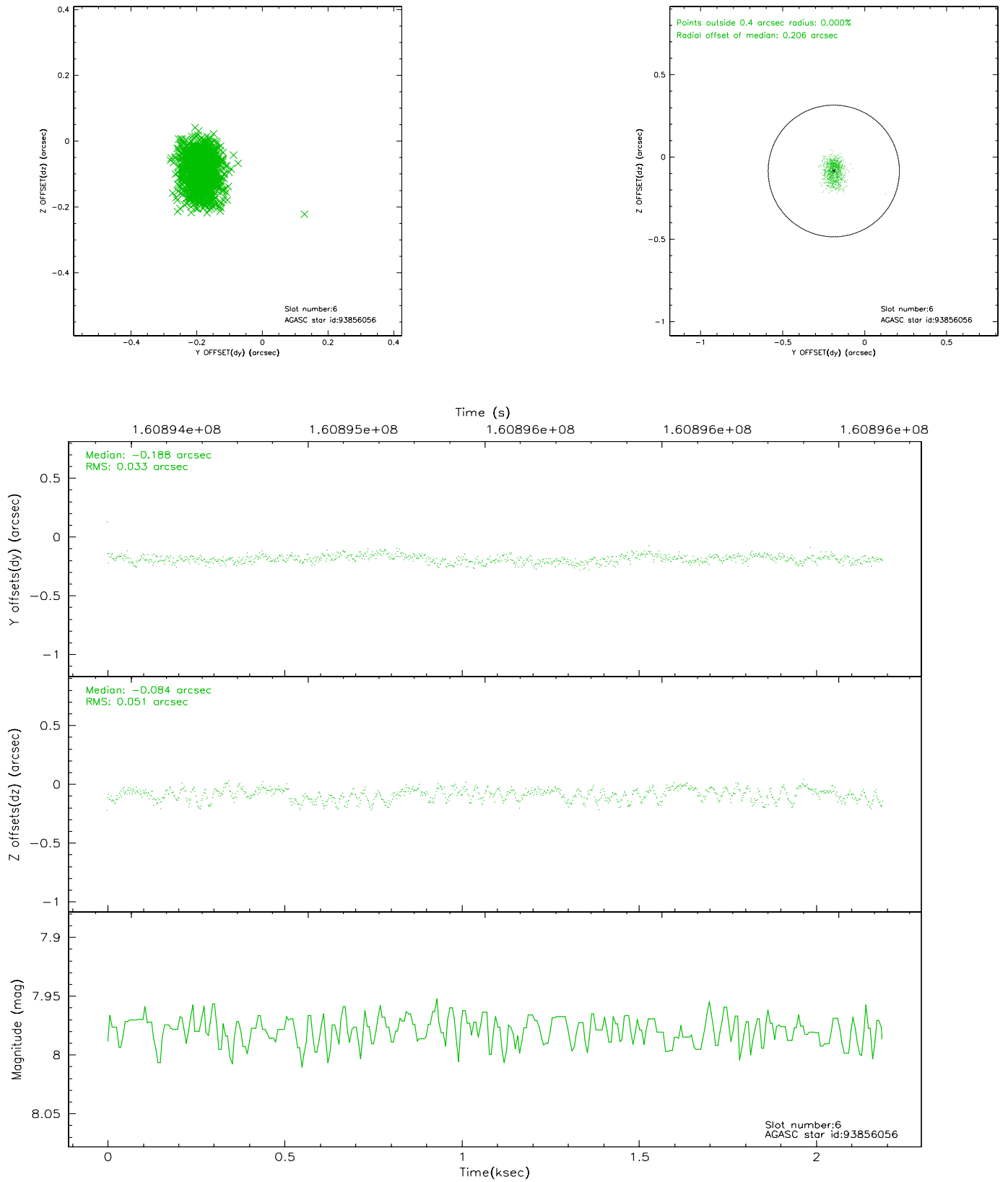
## 2.4.2 Slot 4



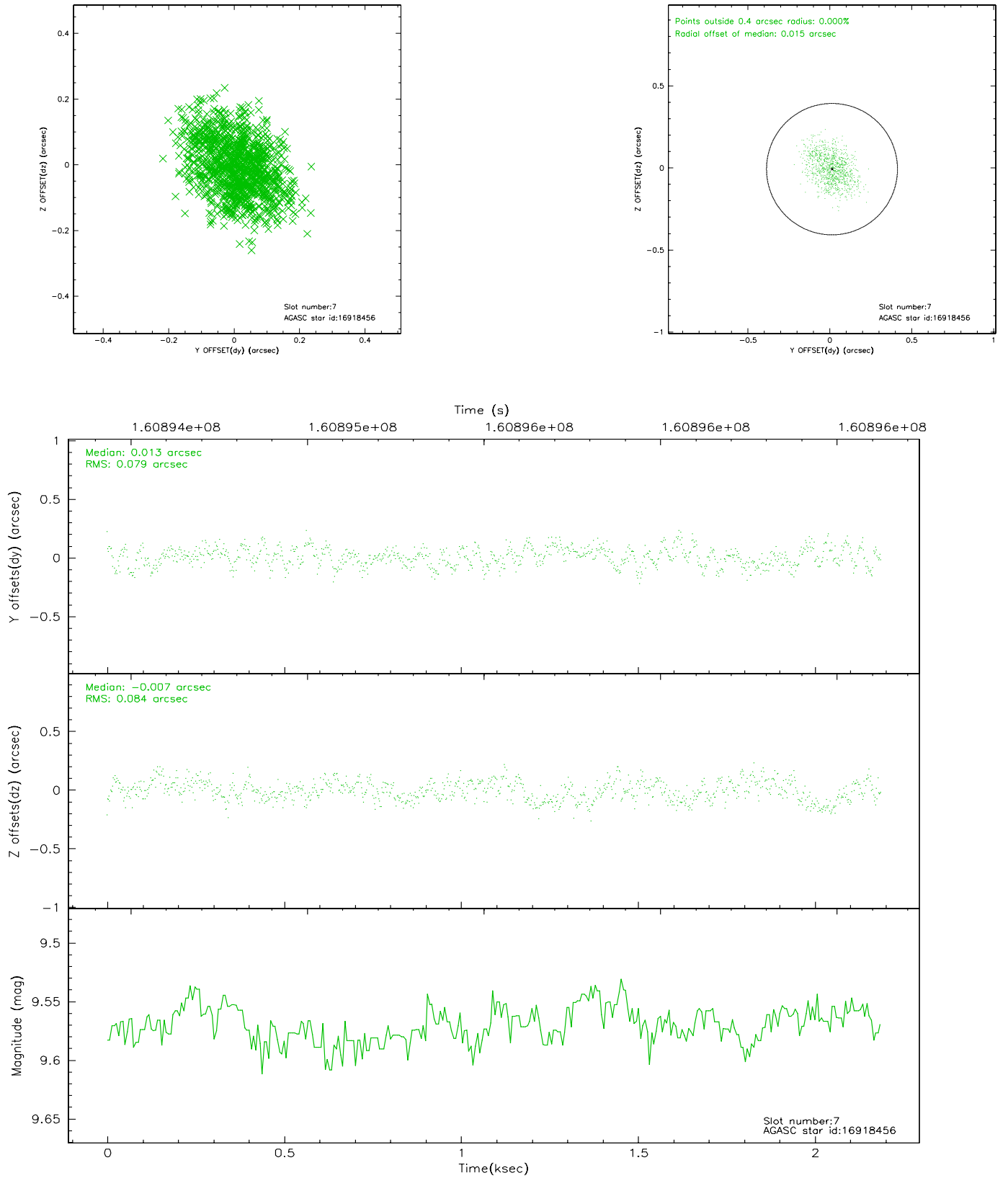
### 2.4.3 Slot 5



## 2.4.4 Slot 6

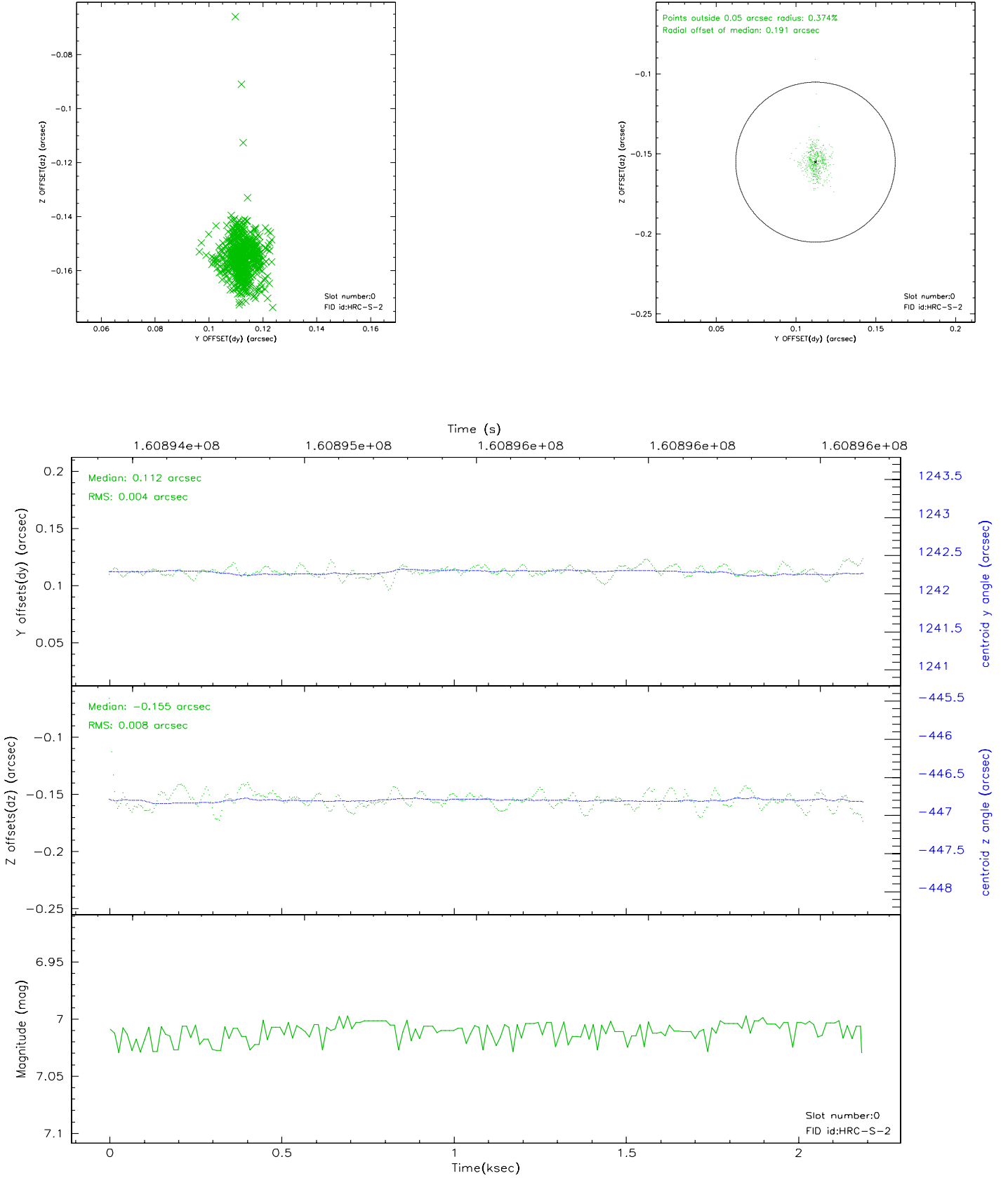


## 2.4.5 Slot 7

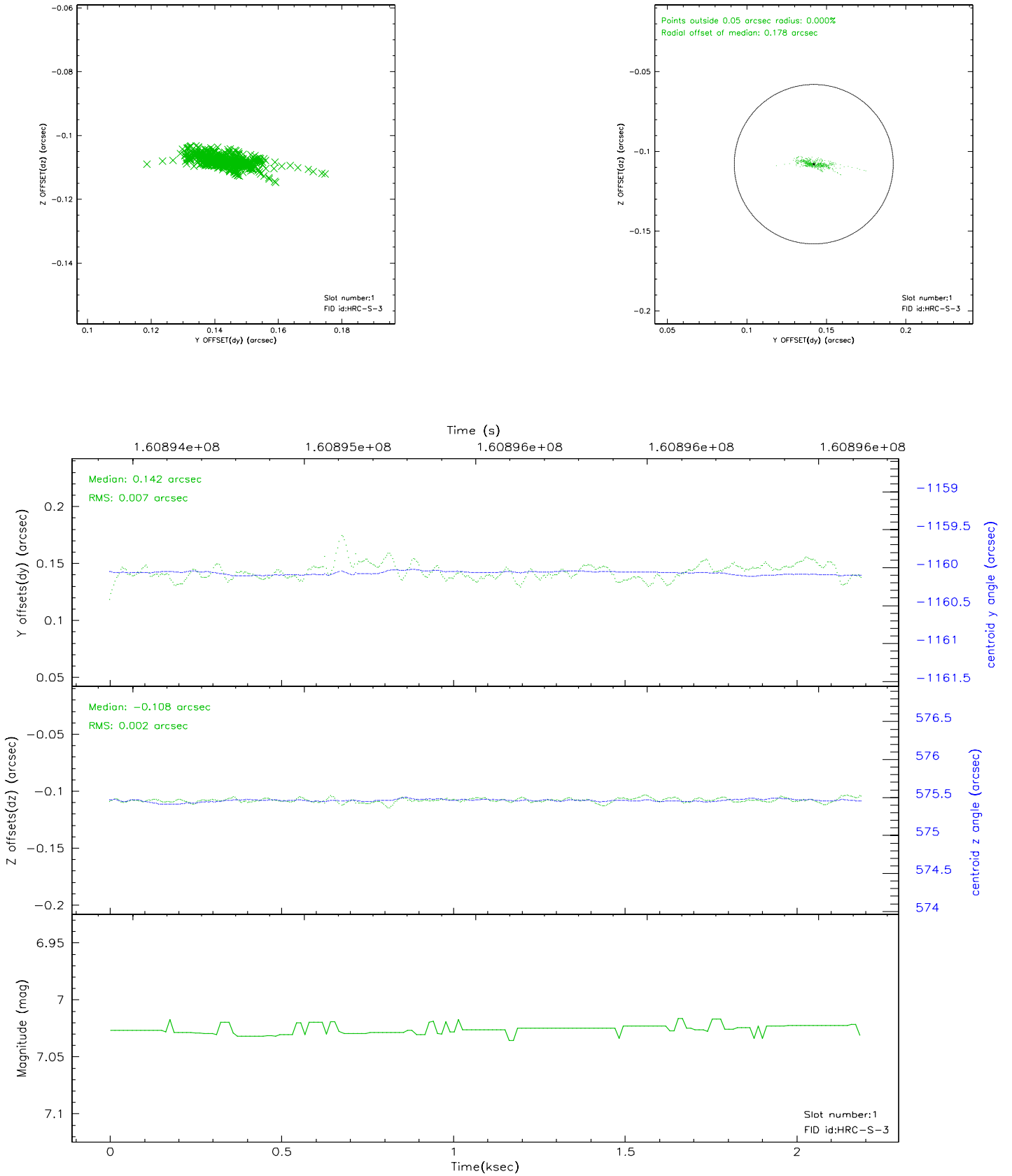


## 2.5 FID Slots

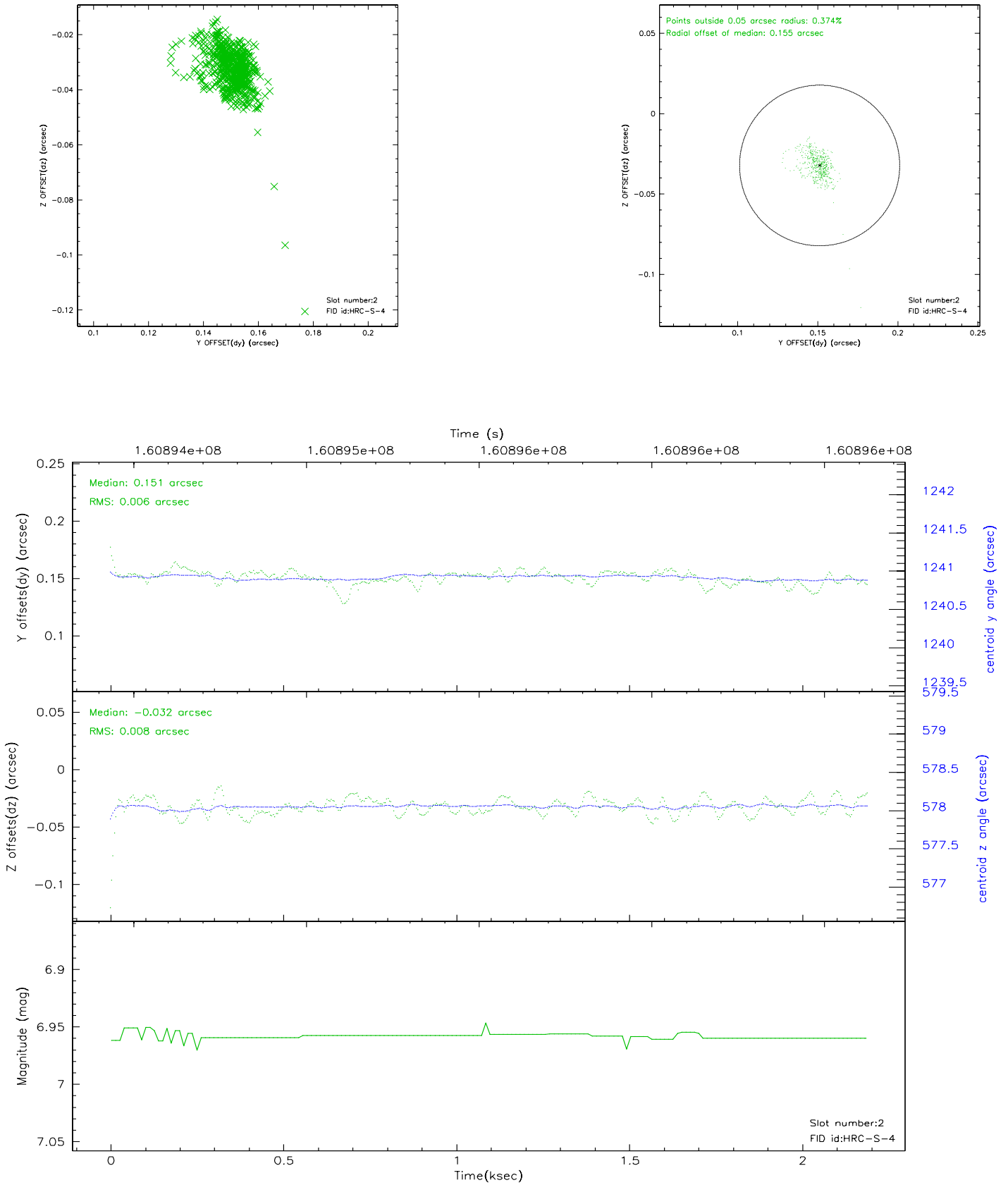
### 2.5.1 Slot 0



## 2.5.2 Slot 1



### 2.5.3 Slot 2





### 3 Point Sources

## A Summary

### A.1 Status

V&V Scientist	Beth Sundheim
V&V Date (YYYY-MM-DD)	2006.07.21
V&V Edition	1
V&V Disposition and Status	OK
V&V Charge Time	2.143

### A.2 Comments

Window constraint satisfied.