

V&V Reference Report

L2 ASCDS Version : 7.6.9

Observation 3663 - L2 Version 001
Chandra X-Ray Center

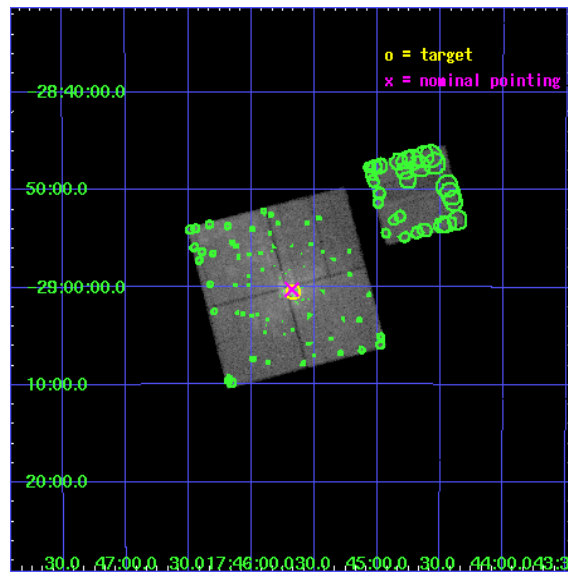
L2 Processing Date : Sep 17 2006

Contents

1	Front	2
2	OBI	3
2.1	OBI	3
2.1.1	Images	3
2.1.2	Bias	3
2.1.3	Parameters	4
2.1.4	Events	4
2.2	Compared Parameters	5
2.3	Aspect	6
2.4	Star Slots	9
2.4.1	Slot 3	9
2.4.2	Slot 4	10
2.4.3	Slot 5	11
2.4.4	Slot 6	12
2.4.5	Slot 7	13
2.5	FID Slots	14
2.5.1	Slot 0	14
2.5.2	Slot 1	15
2.5.3	Slot 2	16
3	Point Sources	17
A	Summary	18
A.1	Status	18
A.2	Comments	18

1 Front

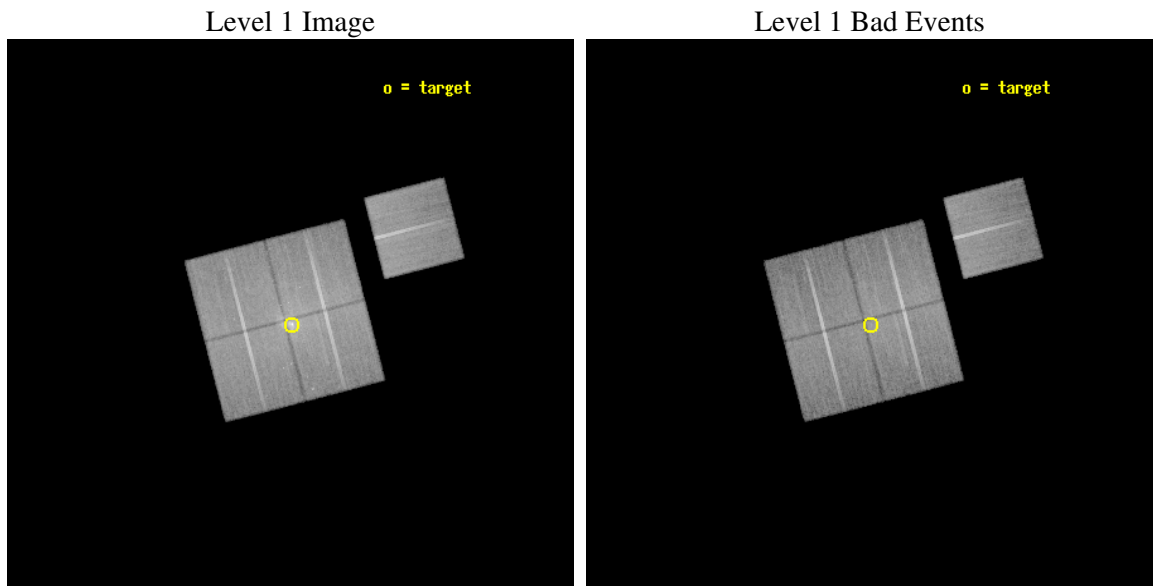
seq_num	600280
obs_id	3663
title	MONITORING THE EXTREME X-RAY FLARING OF SAGITTARIUS A* AND A DEEP SURVEY OF THE CENTRAL 40 PC OF THE GALAXY
observer	Dr. Frederick Baganoff
object	SGR A*
dtcycle	0
cycle	P
ra_targ	266.416667
dec_targ	-29.007778
ra_nom	266.41993001194
dec_nom	-29.00406499586
roll_nom	75.510272098361
revision	2
ontime	38461.658955812
livetime	37959.129066493
ontime0	38464.799926043
ontime1	38461.658945829
ontime2	38464.799926043
ontime3	38461.658955812
ontime6	38464.799926043
l2events	335794



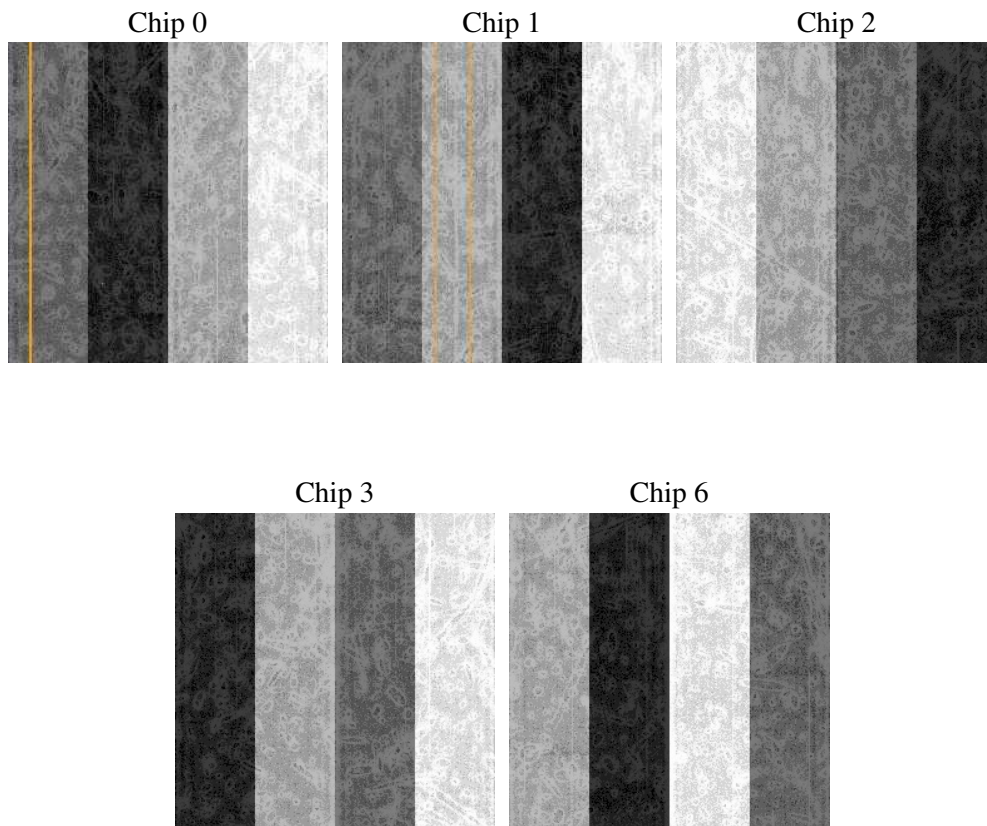
2 OBI

2.1 OBI

2.1.1 Images



2.1.2 Bias



2.1.3 Parameters

obi_num	0
ascdsver	7.6.9
caldbver	3.2.3
date	2006-09-17T23:28:35
revision	2

sched_exp_time	38347.680000
ontime	38464.753729373
ontime0	38471.035699785
ontime1	38467.894719571
ontime2	38471.035699785
ontime3	38464.753729373
ontime6	38471.035699785
l1events	1531993

2.1.4 Events

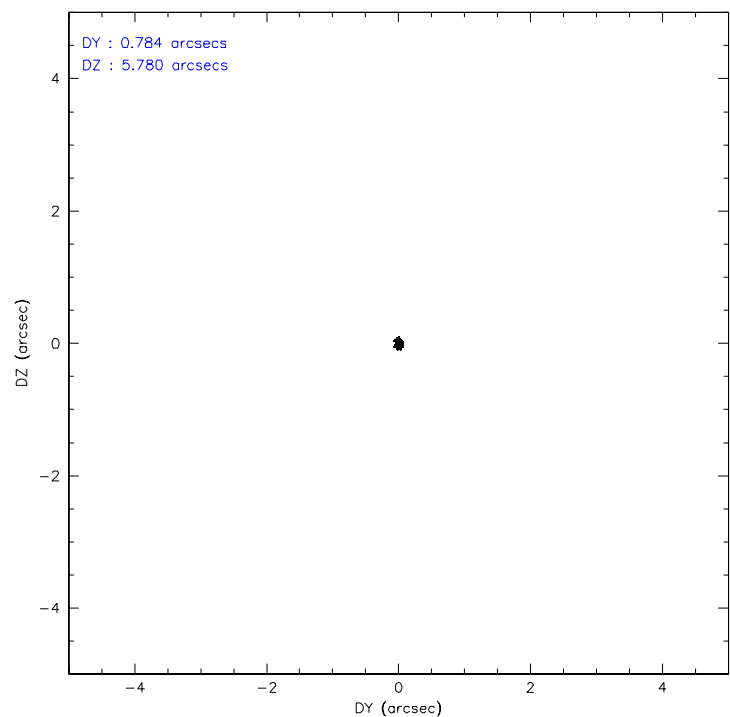
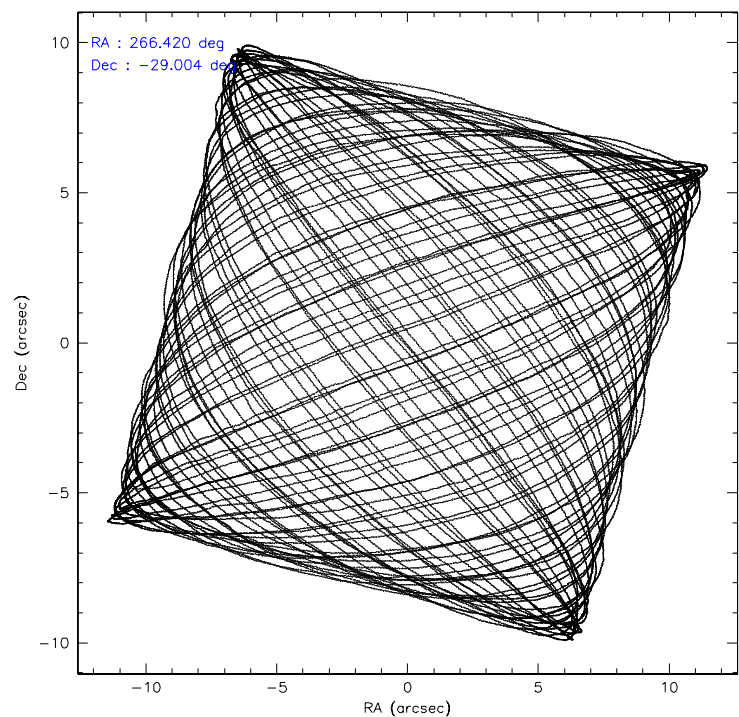
	ccd 0	ccd 1	ccd 2	ccd 3	ccd 6
level 1 events	306045	293199	315510	323154	294085
rejected events	209780	217132	241137	239669	244208
rejected %	68%	74%	76%	74%	83%

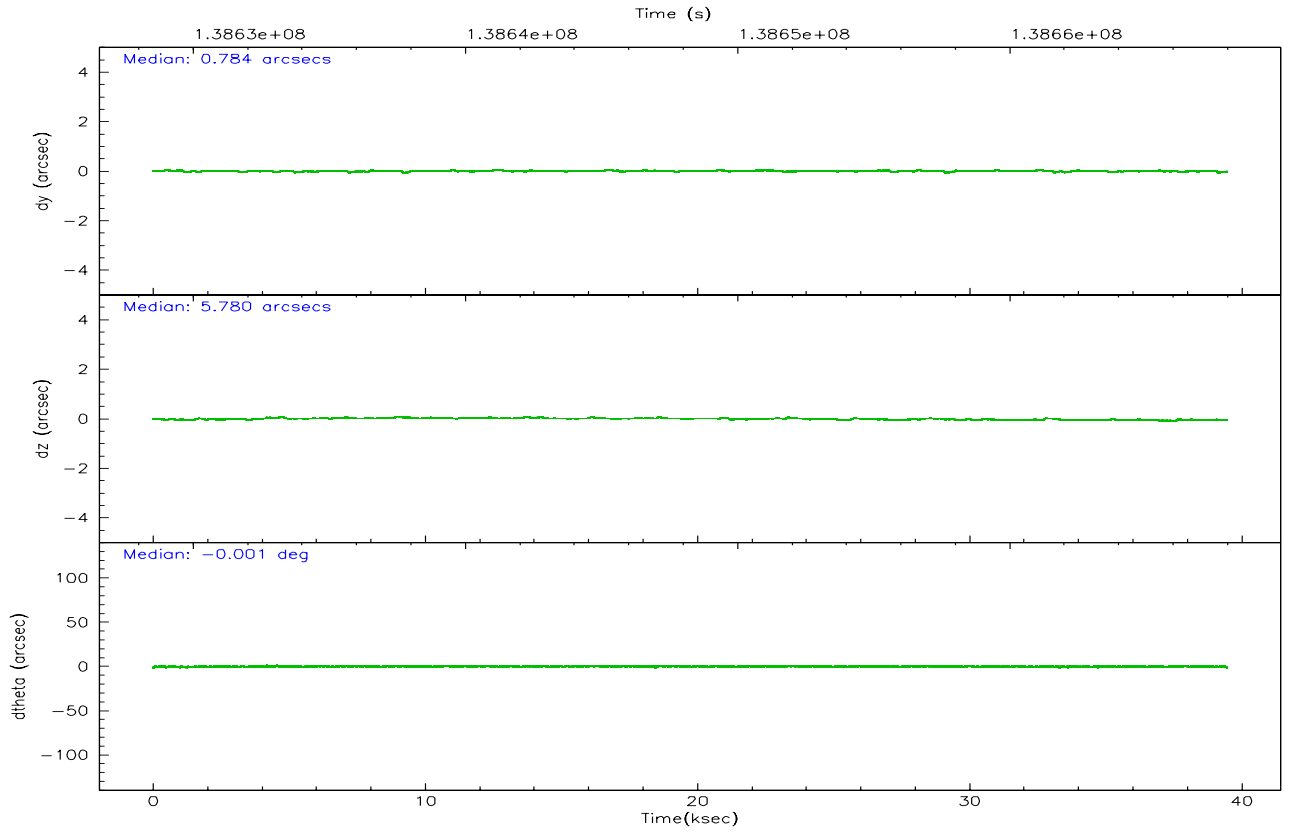
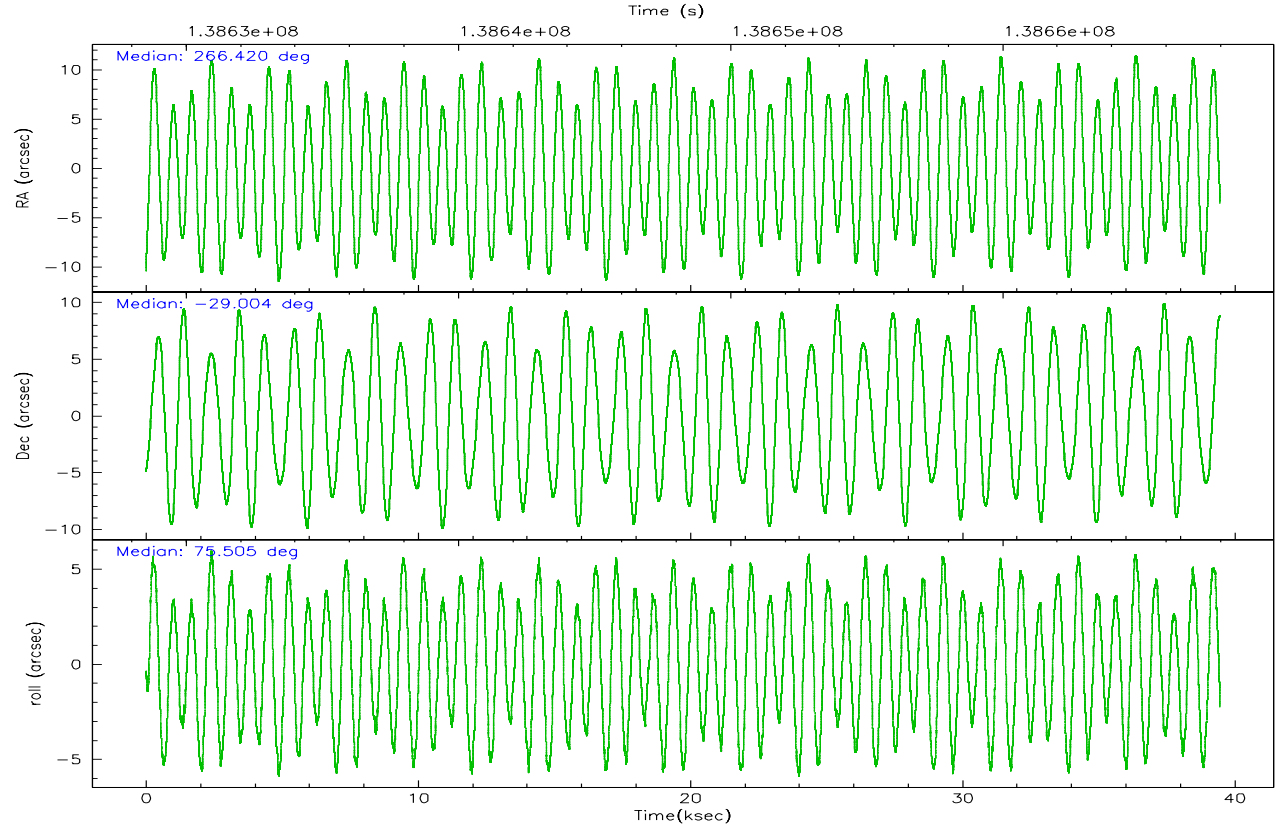
	ccd 0	ccd 1	ccd 2	ccd 3	ccd 6
grade 0 events	55259	39586	40216	45849	23243
	18%	13%	12%	14%	7%
grade 1 events	355	253	243	254	166
	0%	0%	0%	0%	0%
grade 2 events	18331	15737	15200	16308	11818
	5%	5%	4%	5%	4%
grade 3 events	5544	4832	4333	4940	3304
	1%	1%	1%	1%	1%
grade 4 events	5402	4843	4780	4986	3210
	1%	1%	1%	1%	1%
grade 5 events	9368	9672	8715	9817	10174
	3%	3%	2%	3%	3%
grade 6 events	11743	11089	9855	11410	8308
	3%	3%	3%	3%	2%
grade 7 events	200043	207187	232168	229590	233862
	65%	70%	73%	71%	79%

2.2 Compared Parameters

Parameter	Planned	Actual	Parameter	Planned	Actual
Instrument	ACIS	ACIS	Obspar format version number	6	6
Detector	ACIS-01236	ACIS-01236	Obspar file type	PREDICTED	ACTUAL
Grating	NONE	NONE	Obspar update status	NONE	UPDATED
Data mode	FAINT	FAINT	Number of optional ACIS chips dropped	0	0
Observation mode	POINTING	POINTING	On-chip summing requested	N	N
Pointing RA	266.428394	266.4199300119439	Subarray requested	NONE	NONE
Pointing Dec	-29.030450	-29.00406499586028	Alternating exposures requested	N	N
Pointing Roll	75.305690	75.51027209836116	Primary exposure time	0.000000	3.1
Window start time	138505804.184000	138505804.184000			
Window stop time	138662224.184000	138662224.184000			
SIM focus pos (mm)	-0.782348	-0.7809083437167272			
SIM defocus (mm)	0	0.001439871863259334			
SIM translation stage pos (mm)	-233.592463	-233.5874344608287			
SIM translation stage offset (mm)	0	-0.005018542100998502			
Observation start time	138629644.184000	138628213.83894			
Observation start date	2002-05-24T12:13:00	2002-05-24T11:50:13			
Observation end time	138667991.184000	138668306.20307			
Observation end date	2002-05-24T22:52:07	2002-05-24T22:58:26			
Read mode	TIMED	TIMED			

2.3 Aspect



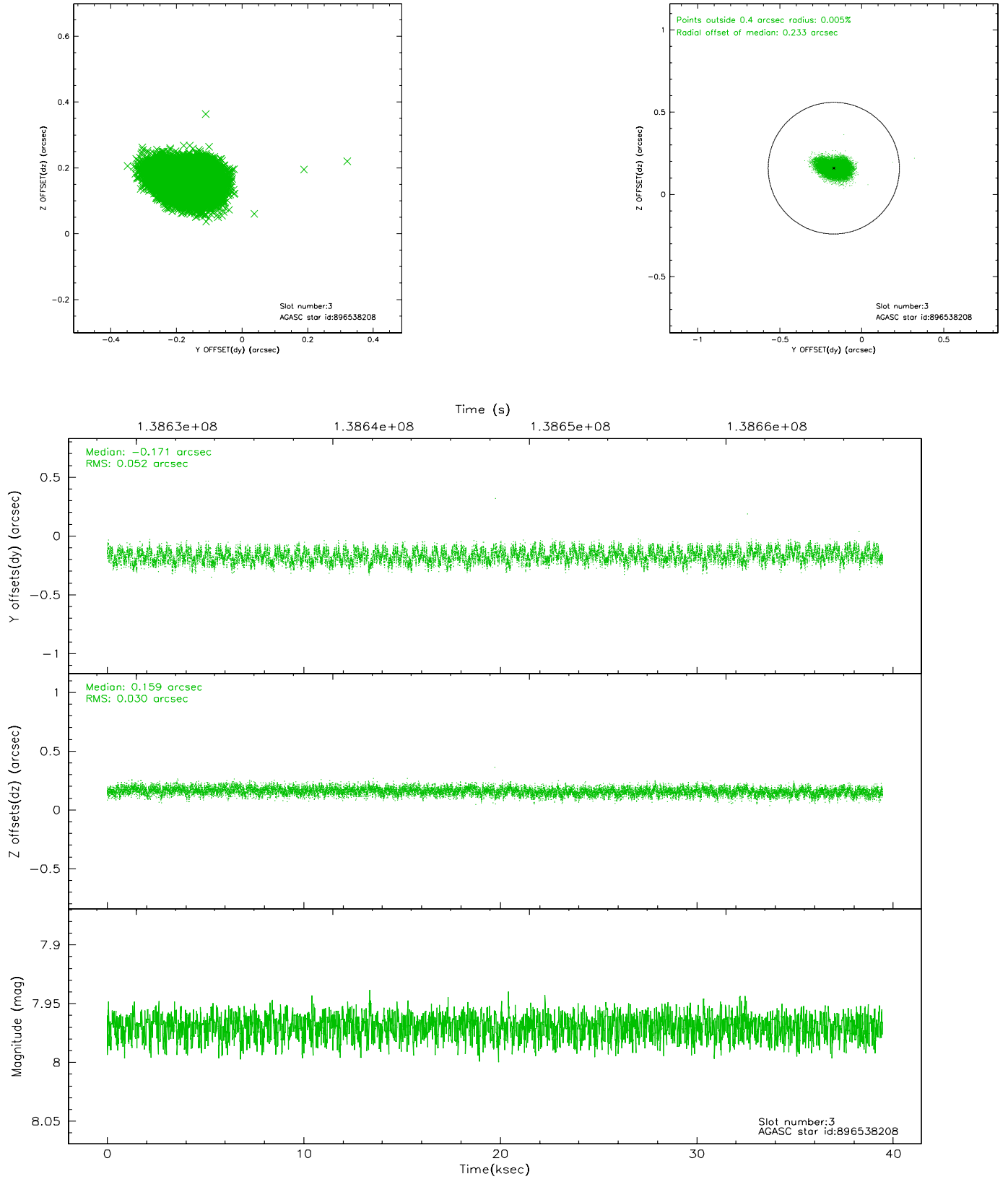


Slot Statistics

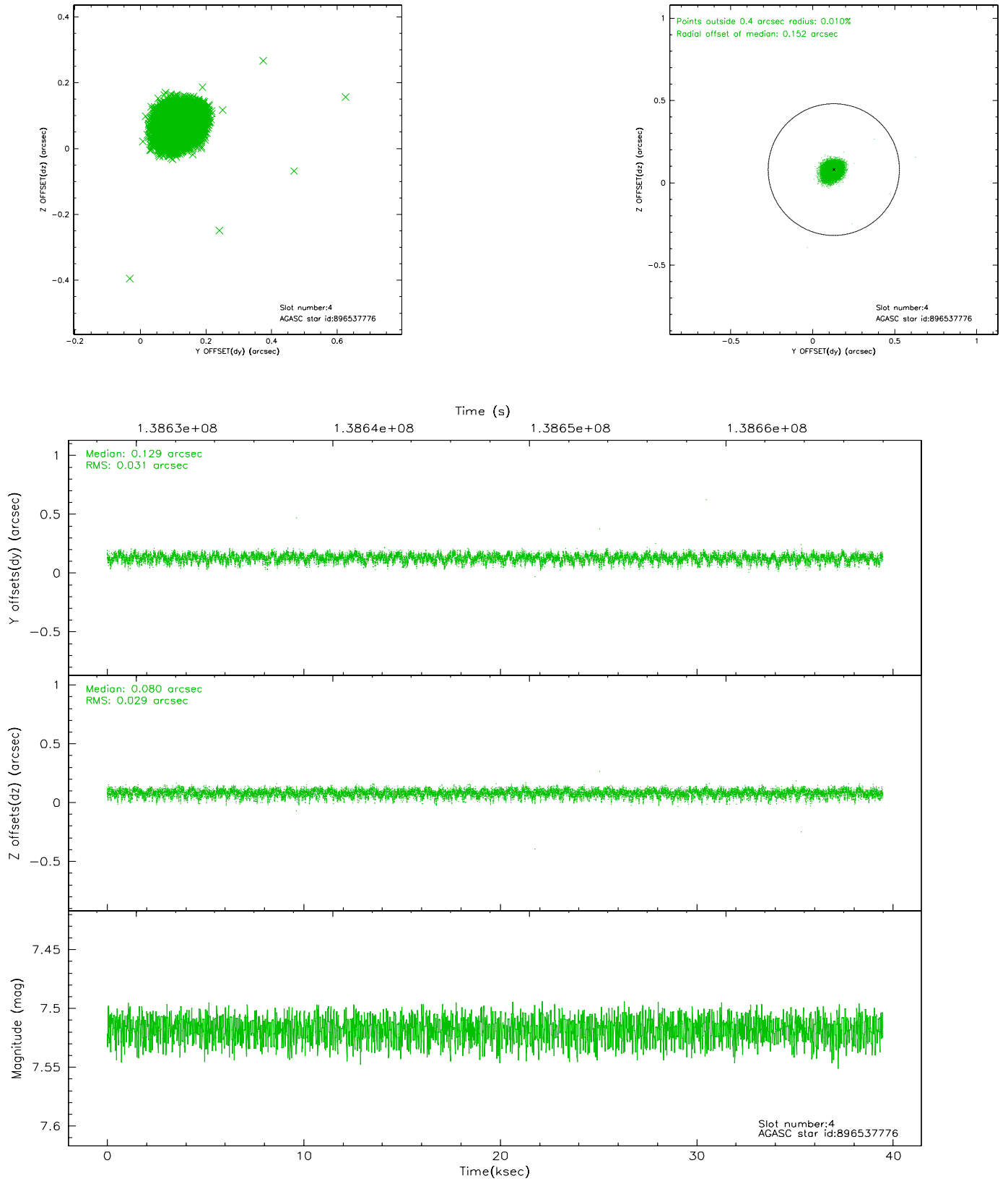
slot	status	id	mag	n_pts	med_dy	med_dz	dr1	dr2	ra	dec	mean_y	mean_z
0	FID	ACIS-I-1	7.25	9625	-0.037	0.049	0.006	0.011	0.000000	0.000000	939.02	-829.10
1	FID	ACIS-I-5	7.24	9624	-0.038	0.021	0.006	0.010	0.000000	0.000000	-1809.06	1068.38
2	FID	ACIS-I-6	7.26	9626	-0.016	0.000	0.007	0.011	0.000000	0.000000	404.60	1712.86
3	GUIDE	896538208	7.97	19252	-0.171	0.159	0.065	0.103	267.176969	-28.671626	1841.36	-1961.41
4	GUIDE	896537776	7.52	19253	0.129	0.080	0.044	0.074	266.655684	-29.665673	-2032.77	-1268.59
5	GUIDE	896541360	7.71	19251	0.087	0.038	0.049	0.081	266.684478	-29.453744	-1271.93	-1163.77
6	GUIDE	896403224	8.29	19249	0.150	-0.179	0.078	0.121	265.612825	-29.438915	-2080.53	2097.34
7	GUIDE	896534664	8.20	19245	-0.196	-0.093	0.068	0.113	266.405570	-28.407461	2149.96	638.69

2.4 Star Slots

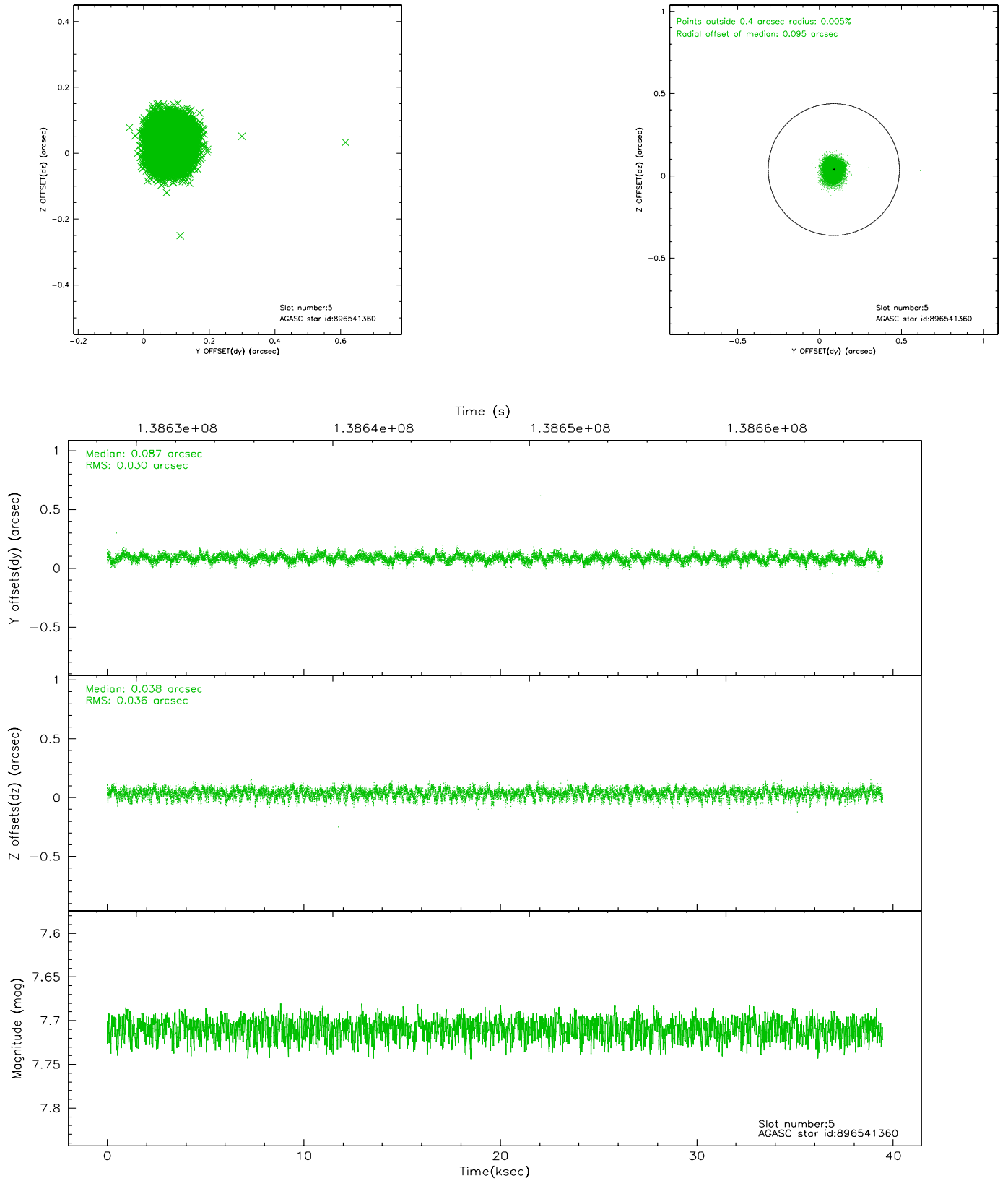
2.4.1 Slot 3



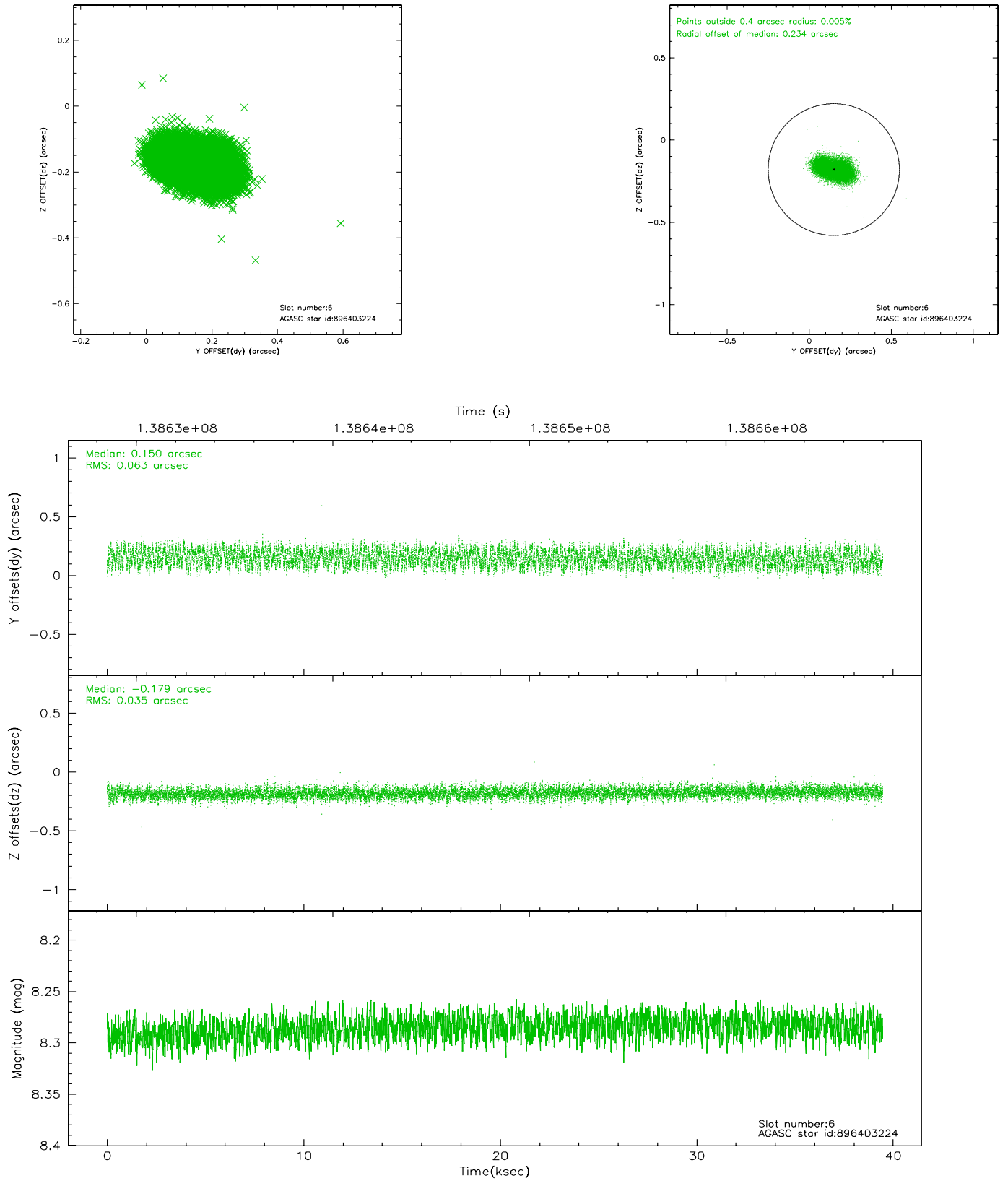
2.4.2 Slot 4



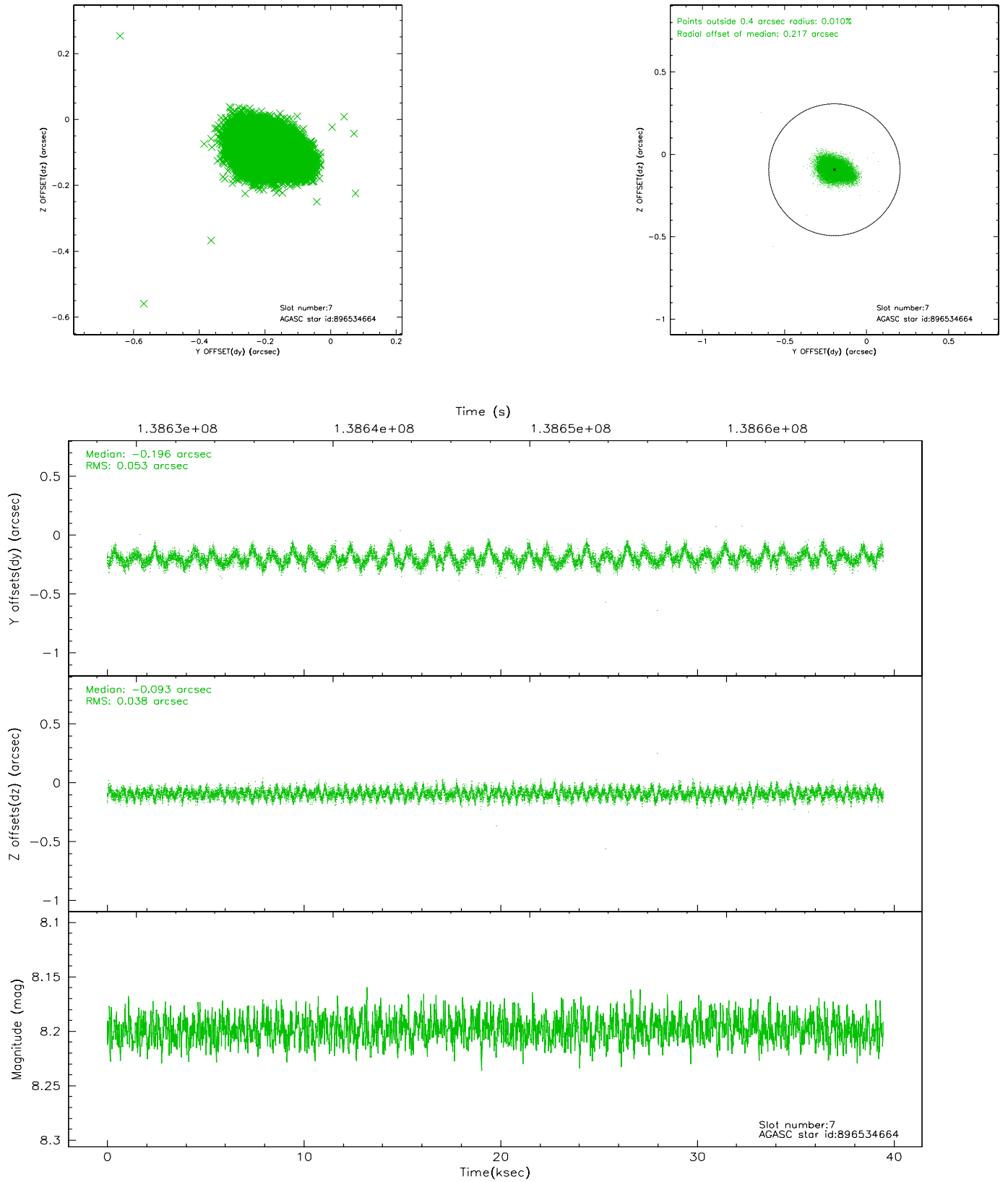
2.4.3 Slot 5



2.4.4 Slot 6

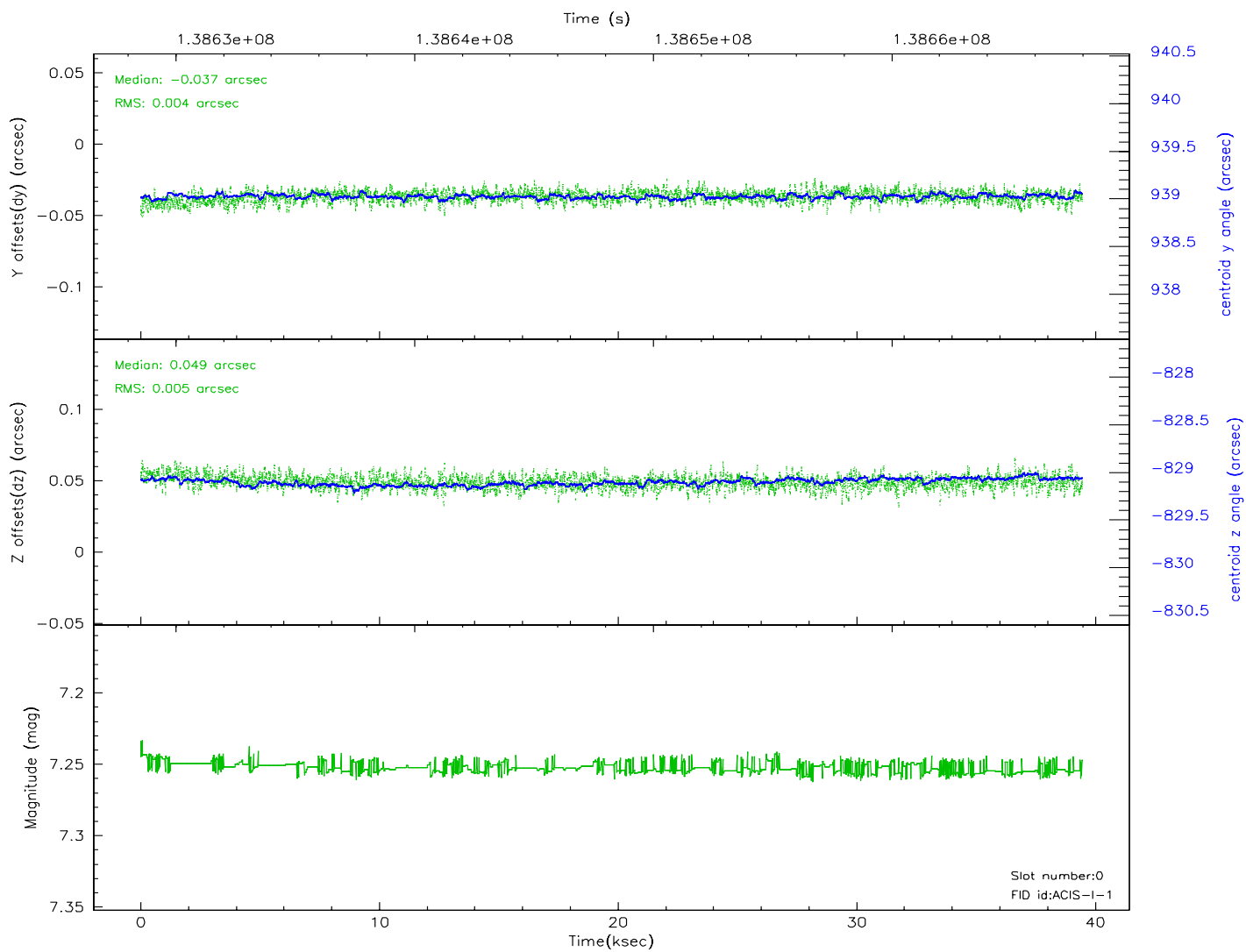
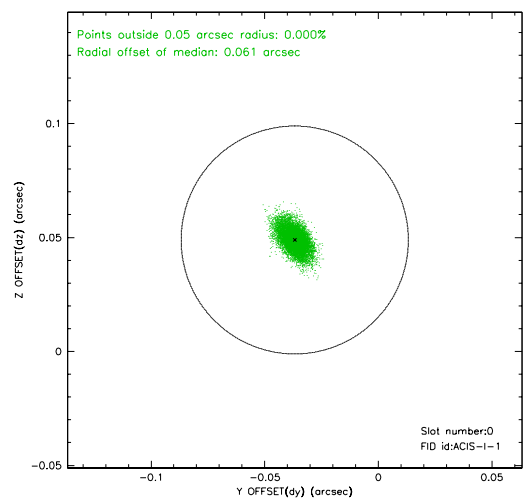
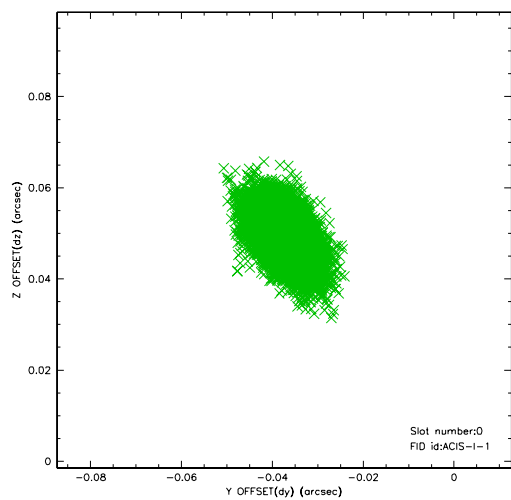


2.4.5 Slot 7

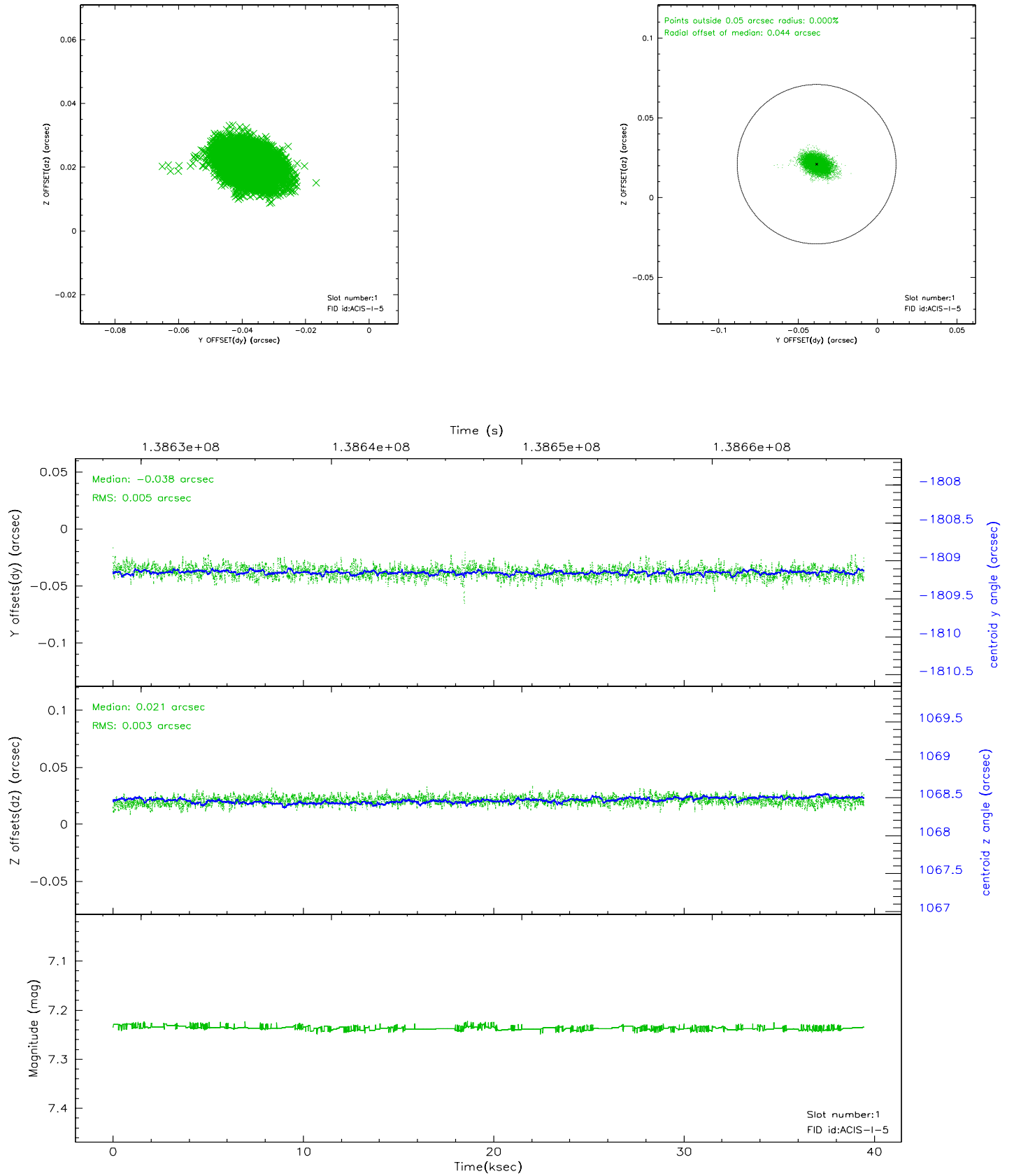


2.5 FID Slots

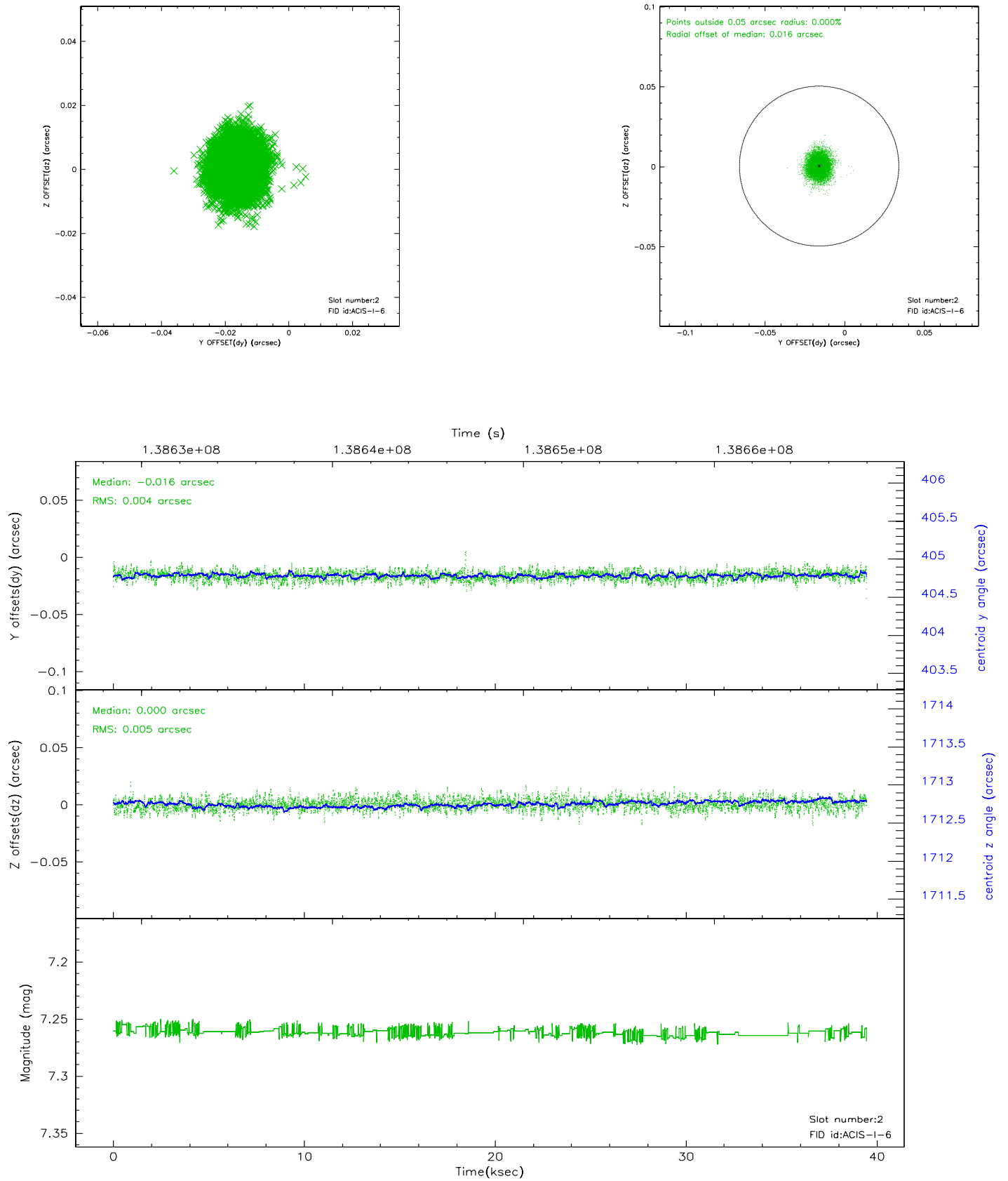
2.5.1 Slot 0



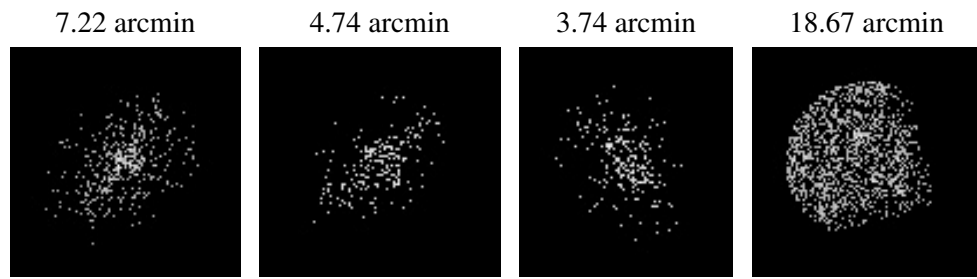
2.5.2 Slot 1



2.5.3 Slot 2



3 Point Sources



A Summary

A.1 Status

V&V Scientist	Jen Lauer
V&V Date (YYYY-MM-DD)	2006.09.18
V&V Edition	1
V&V Disposition and Status	OK
V&V Charge Time	38.461

A.2 Comments

Observation extends ~2 hours past the window constraint stop time.
Observation falls in 2nd half of window stop request = 21:17, actual = 22:58 start request = 01:50:04, actual = 11:50:13 difference deemed acceptable