

V&V Reference Report

L2 ASCDS Version : 7.6.8

Observation 3643 - L2 Version 001
Chandra X-Ray Center

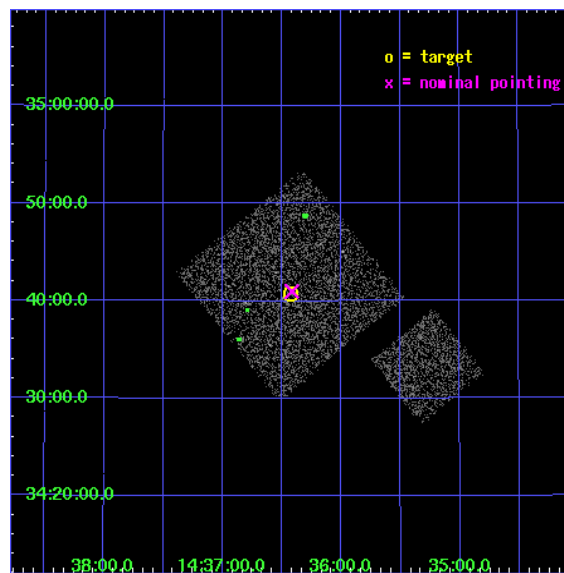
L2 Processing Date : Jul 30 2006

Contents

1	Front	2
2	OBI	3
2.1	OBI	3
2.1.1	Images	3
2.1.2	Bias	3
2.1.3	Parameters	4
2.1.4	Events	4
2.2	Compared Parameters	5
2.3	Aspect	6
2.4	Star Slots	9
2.4.1	Slot 3	9
2.4.2	Slot 4	10
2.4.3	Slot 5	11
2.4.4	Slot 6	12
2.4.5	Slot 7	13
2.5	FID Slots	14
2.5.1	Slot 0	14
2.5.2	Slot 1	15
2.5.3	Slot 2	16
3	Point Sources	17
A	Summary	18
A.1	Status	18
A.2	Comments	18

1 Front

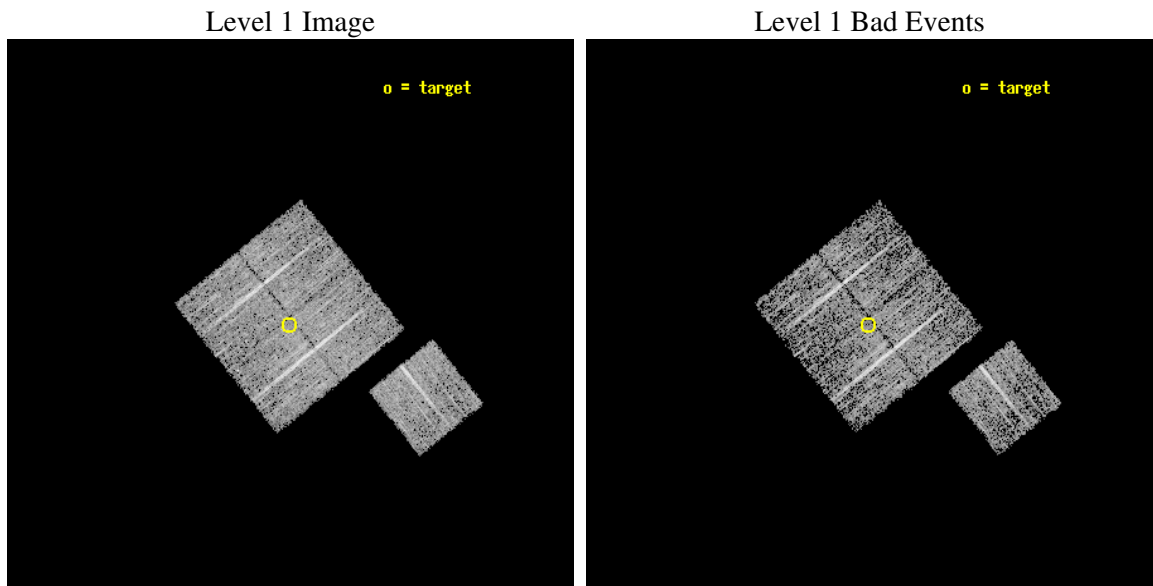
seq_num	900243
obs_id	3643
title	CHANDRA LARGE SCALE SURVEY OF THE NOAO BOOTES DEEP FIELD
observer	Dr. Stephen Murray
object	NOAO FIELD F9
dtcycle	0
cycle	P
ra_targ	219.106748
dec_targ	34.679082
ra_nom	219.10411604119
dec_nom	34.683095600923
roll_nom	141.0101803676
revision	2
ontime	4773.959030509
livetime	4711.5837412379
ontime0	4777.0999908149
ontime1	4777.0999908149
ontime2	4777.0999908149
ontime3	4773.959030509
ontime6	4777.0999908149
l2events	9814



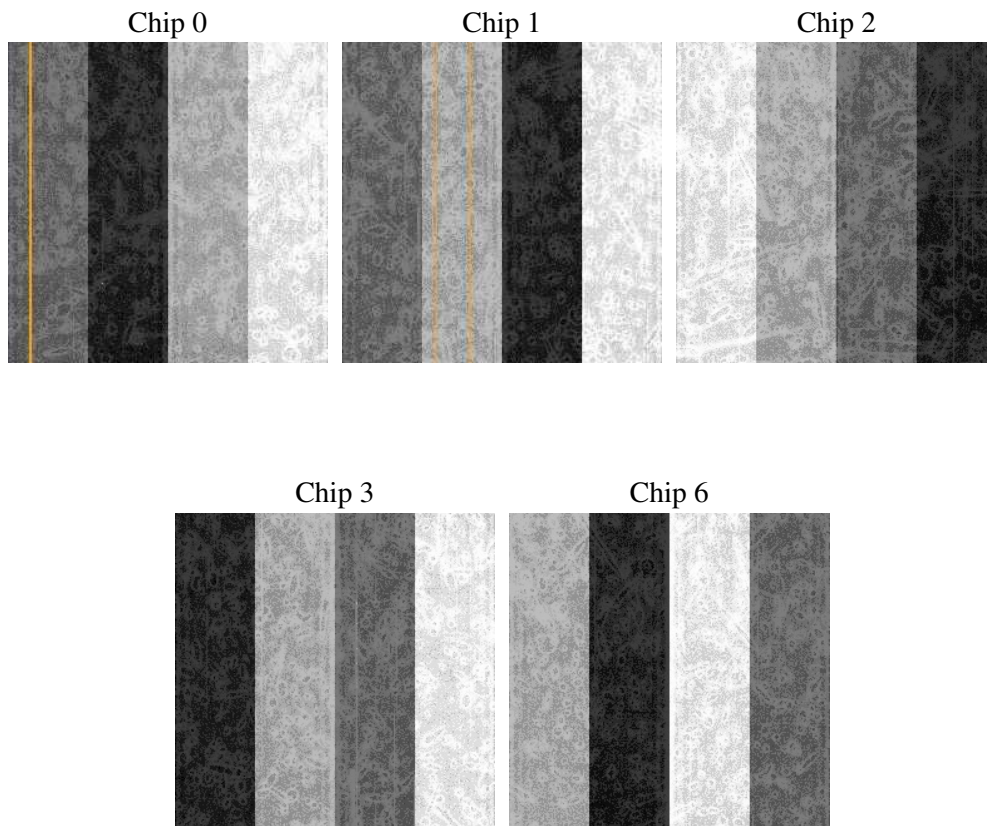
2 OBI

2.1 OBI

2.1.1 Images



2.1.2 Bias



2.1.3 Parameters

obi_num	1
ascdsver	7.6.8
caldsver	3.2.2
date	2006-07-30T04:06:48
revision	2

sched_exp_time	5000.000000
ontime	4777.4721713066
ontime0	4780.6131316125
ontime1	4780.6131316125
ontime2	4780.6131316125
ontime3	4777.4721713066
ontime6	4780.6131017208
l1events	118915

2.1.4 Events

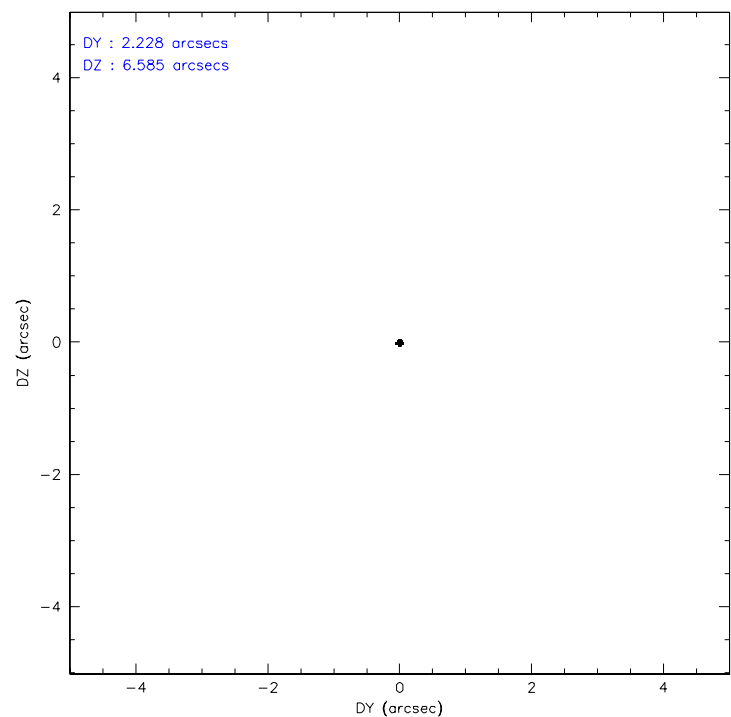
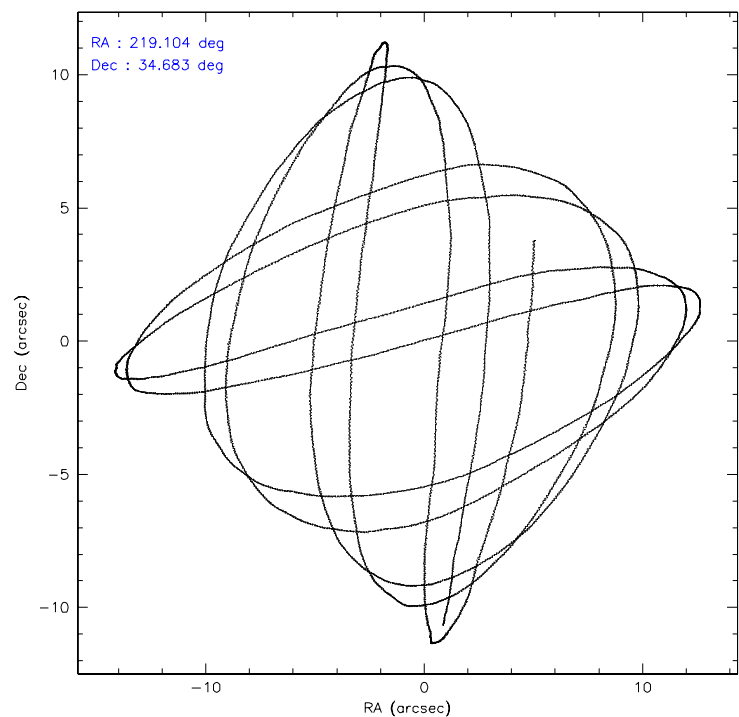
	ccd 0	ccd 1	ccd 2	ccd 3	ccd 6
level 1 events	22483	22500	24862	25160	23910
rejected events	20067	20073	22565	22822	21524
rejected %	89%	89%	90%	90%	90%

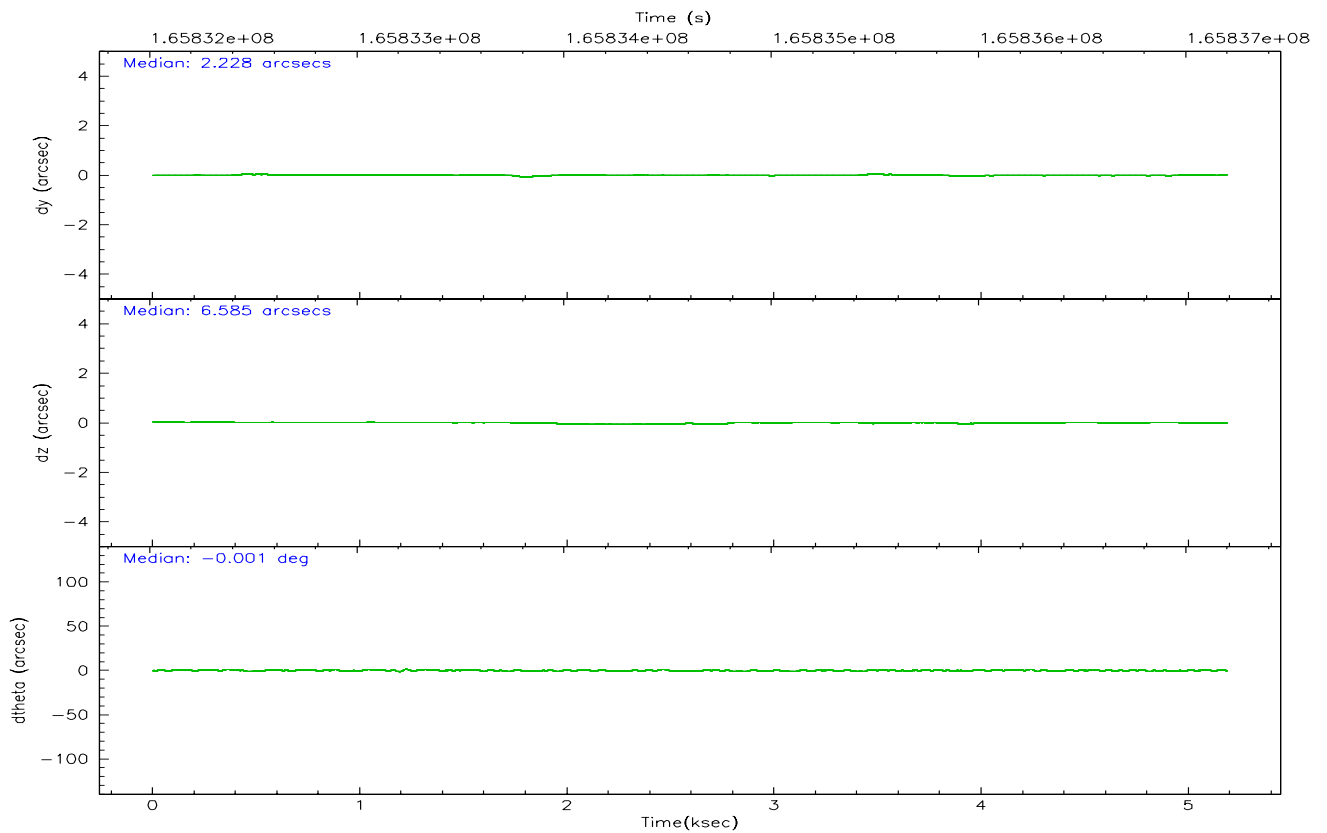
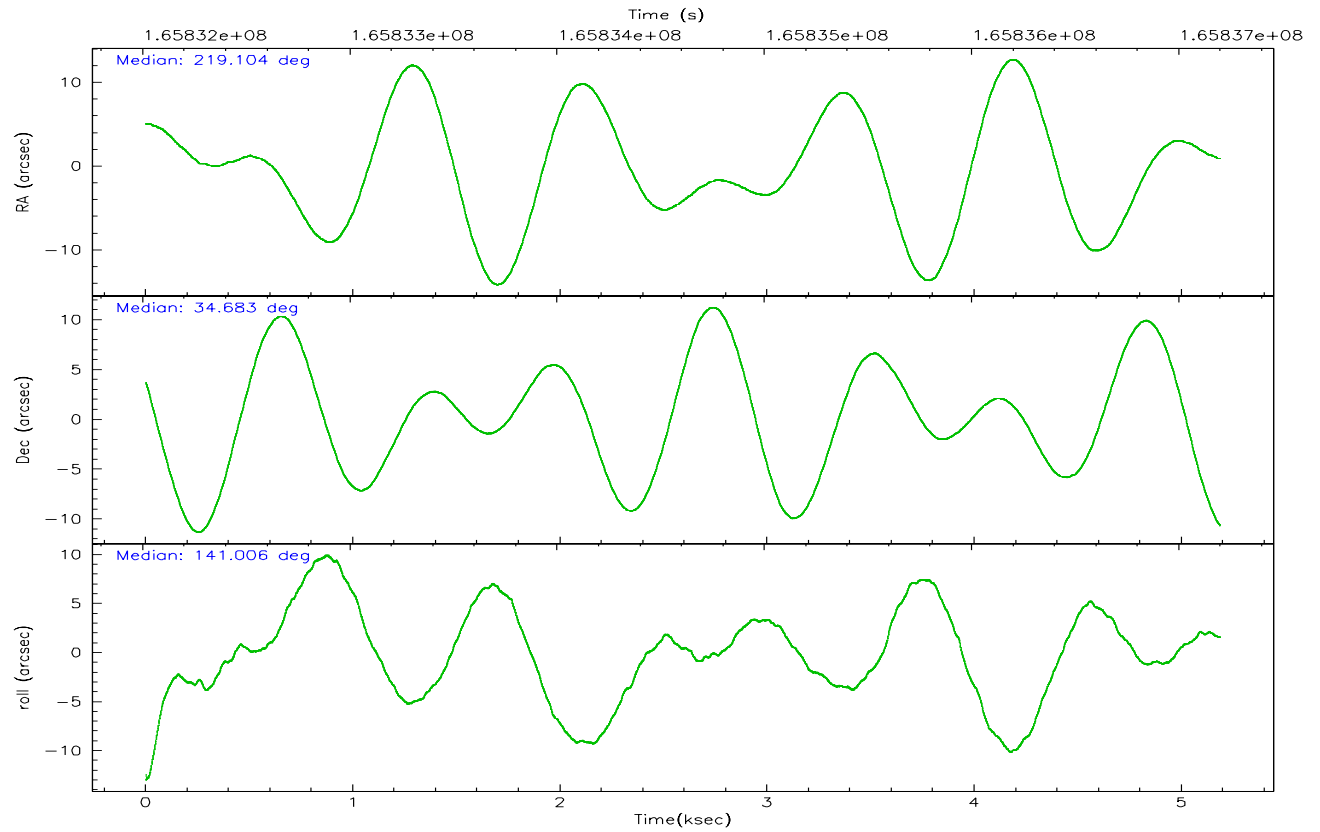
	ccd 0	ccd 1	ccd 2	ccd 3	ccd 6
grade 0 events	908	888	920	884	881
	4%	3%	3%	3%	3%
grade 1 events	8	12	5	6	18
	0%	0%	0%	0%	0%
grade 2 events	519	487	523	465	508
	2%	2%	2%	1%	2%
grade 3 events	301	289	222	277	263
	1%	1%	0%	1%	1%
grade 4 events	274	289	258	265	253
	1%	1%	1%	1%	1%
grade 5 events	672	755	646	781	779
	2%	3%	2%	3%	3%
grade 6 events	416	475	376	447	482
	1%	2%	1%	1%	2%
grade 7 events	19385	19305	21912	22035	20726
	86%	85%	88%	87%	86%

2.2 Compared Parameters

Parameter	Planned	Actual	Parameter	Planned	Actual
Instrument	ACIS	ACIS	Obspar format version number	6	6
Detector	ACIS-01236	ACIS-01236	Obspar file type	PREDICTED	ACTUAL
Grating	NONE	NONE	Obspar update status	NONE	UPDATED
Data mode	VFAINT	VFAINT	On-chip summing requested	N	N
Observation mode	POINTING	POINTING	Subarray requested	NONE	NONE
Pointing RA	219.137001	219.1041160411867	Alternating exposures requested	N	N
Pointing Dec	34.679001	34.68309560092317	Primary exposure time	0.000000	3.1
Pointing Roll	140.782786	141.0101803675952			
SIM focus pos (mm)	-0.782348	-0.7809083437167272			
SIM defocus (mm)	0	0.001439871863259334			
SIM translation stage pos (mm)	-233.592463	-233.5874344608287			
SIM translation stage offset (mm)	0	-0.005018542100998502			
Observation start time	165832205.184000	165831829.25605			
Observation start date	2003-04-04T08:29:01	2003-04-04T08:23:49			
Observation end time	165837205.184000	165837339.14378			
Observation end date	2003-04-04T09:52:21	2003-04-04T09:55:39			
Read mode	TIMED	TIMED			

2.3 Aspect



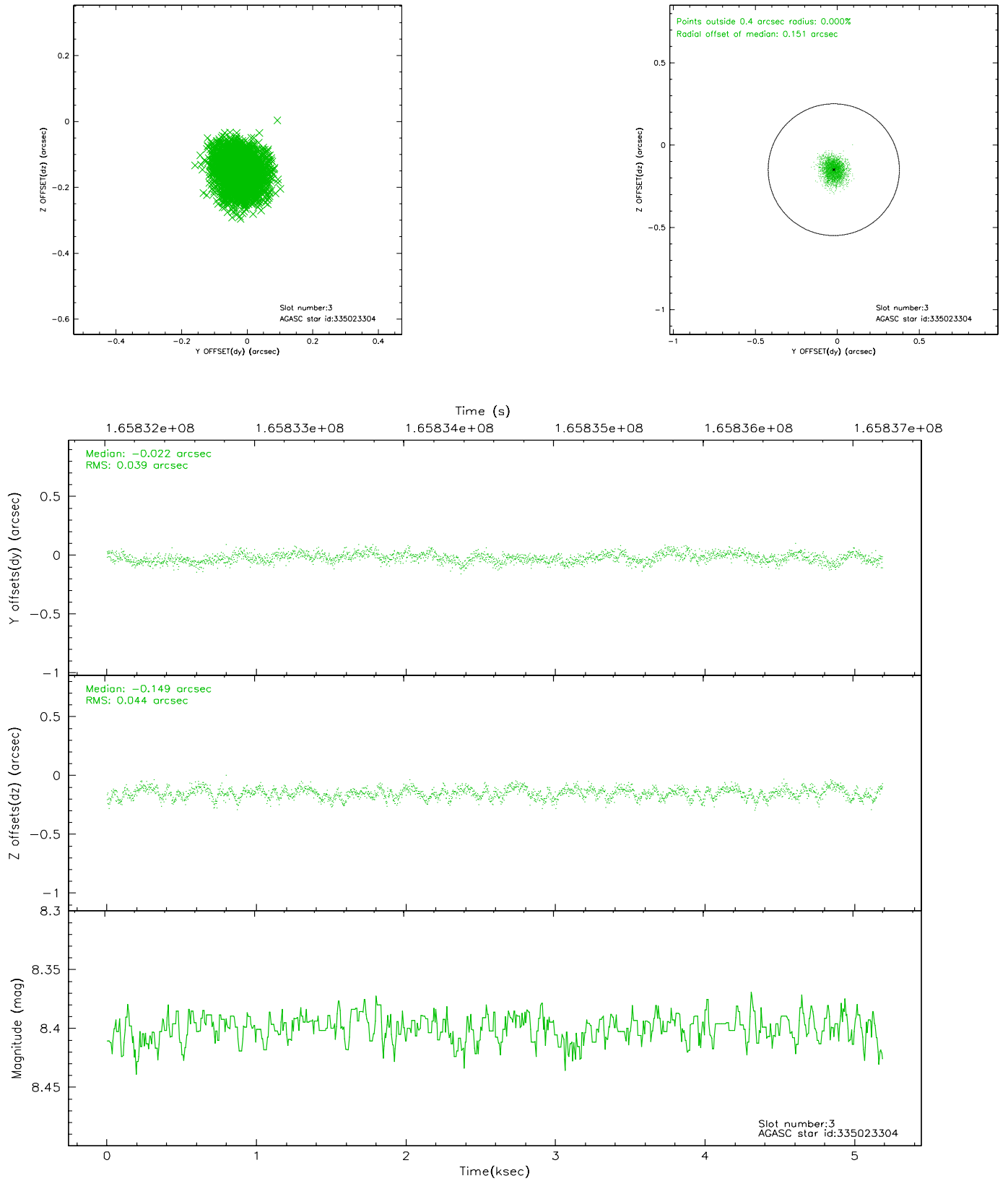


Slot Statistics

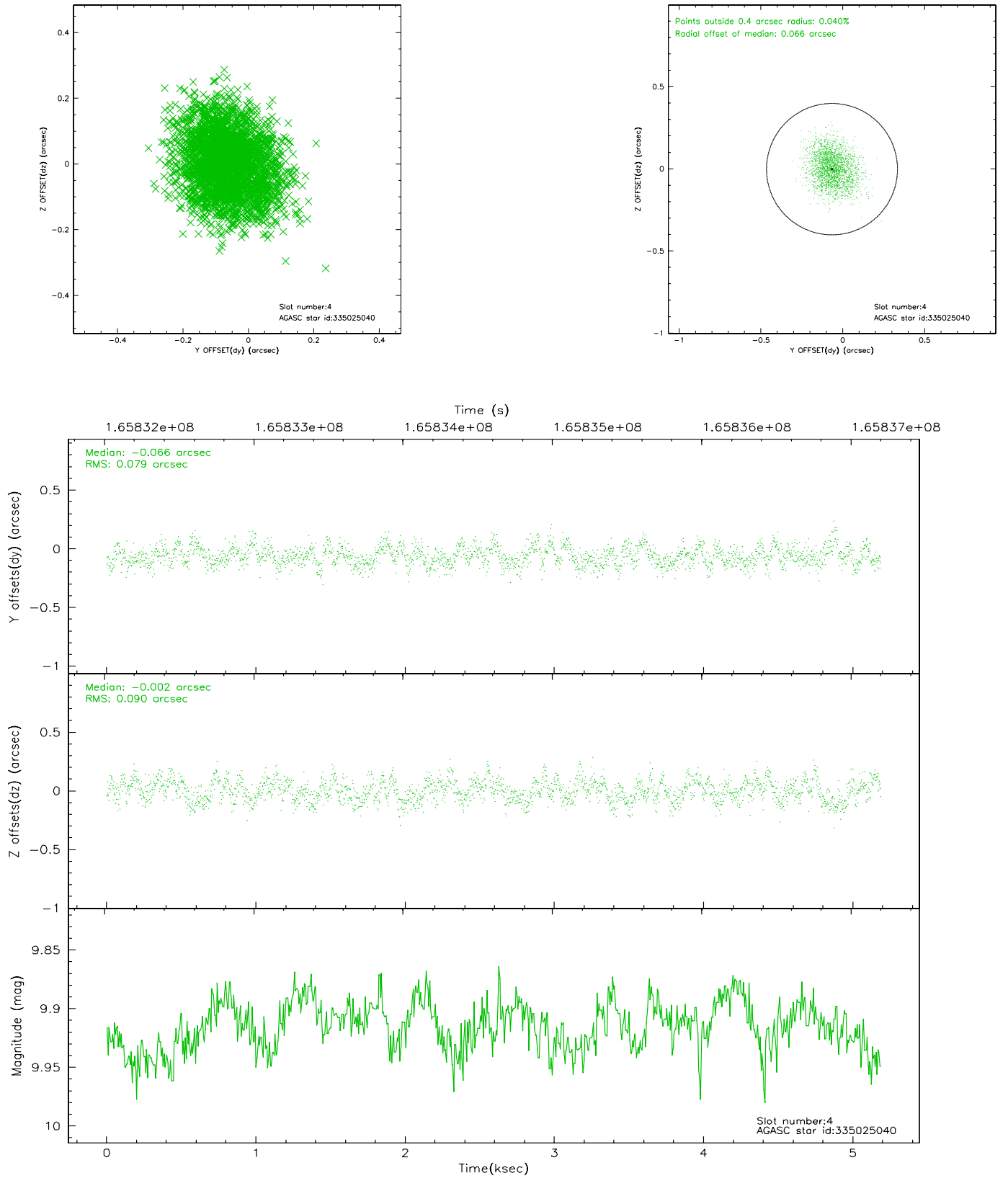
slot	status	id	mag	n_pts	med_dy	med_dz	dr1	dr2	ra	dec	mean_y	mean_z
0	FID	ACIS-I-1	7.25	1265	-0.008	0.023	0.006	0.010	0.000000	0.000000	937.56	-829.96
1	FID	ACIS-I-5	7.24	1265	-0.047	0.045	0.006	0.011	0.000000	0.000000	-1809.89	1067.03
2	FID	ACIS-I-6	7.26	1265	-0.036	0.003	0.007	0.011	0.000000	0.000000	401.87	1712.77
3	GUIDE	335023304	8.40	2531	-0.022	-0.149	0.063	0.101	218.883608	34.686545	599.30	452.39
4	GUIDE	335025040	9.91	2528	-0.066	-0.002	0.128	0.202	218.601670	34.305240	385.80	2045.95
5	GUIDE	335152968	9.77	2521	0.189	-0.035	0.112	0.181	219.446087	34.867883	-275.78	-1104.26
6	GUIDE	335414336	8.96	2531	-0.070	0.071	0.069	0.114	218.979022	35.090910	1298.68	-855.19
7	GUIDE	335153184	8.62	2530	-0.032	0.119	0.073	0.122	220.141256	34.877917	-1834.67	-2441.89

2.4 Star Slots

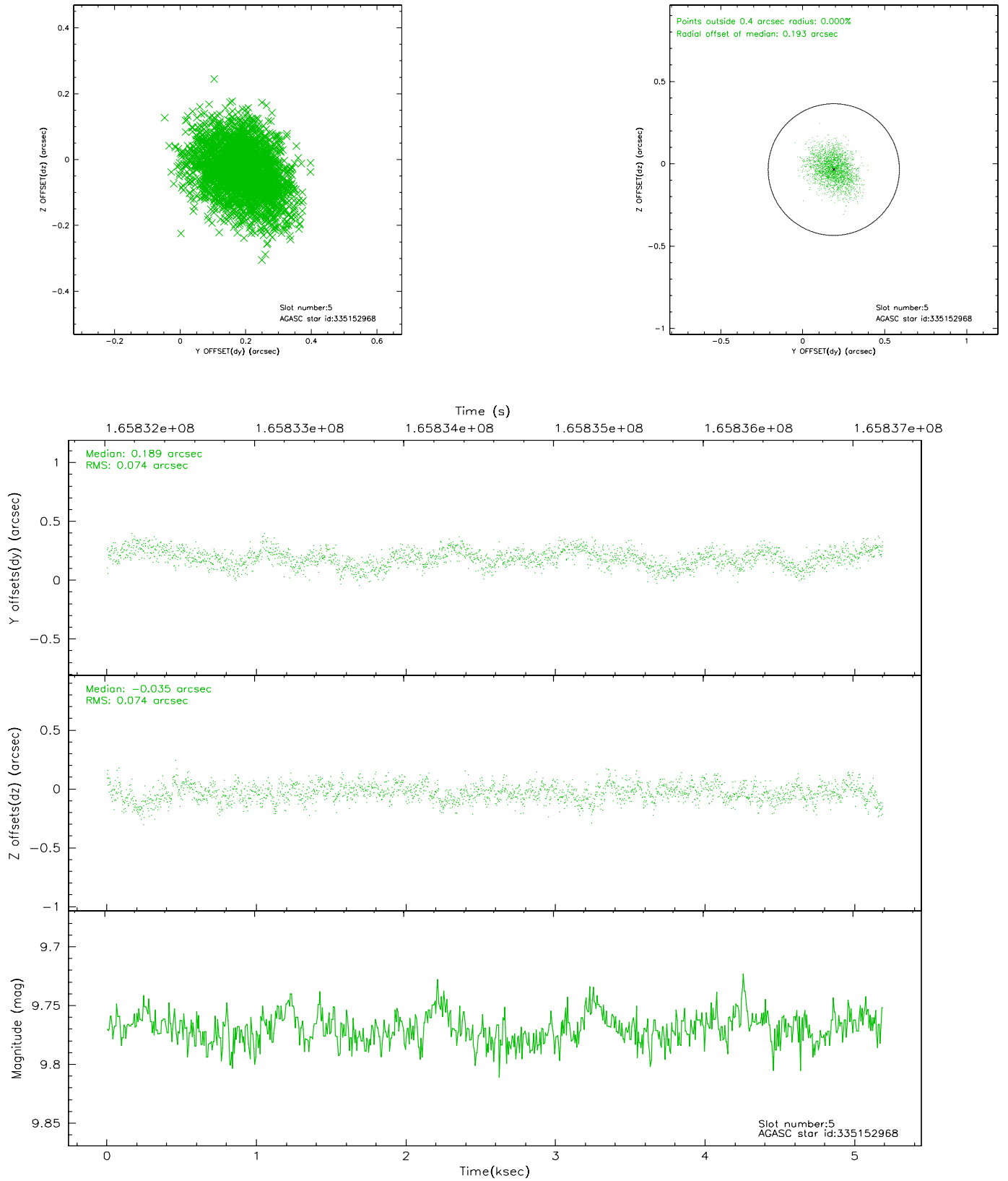
2.4.1 Slot 3



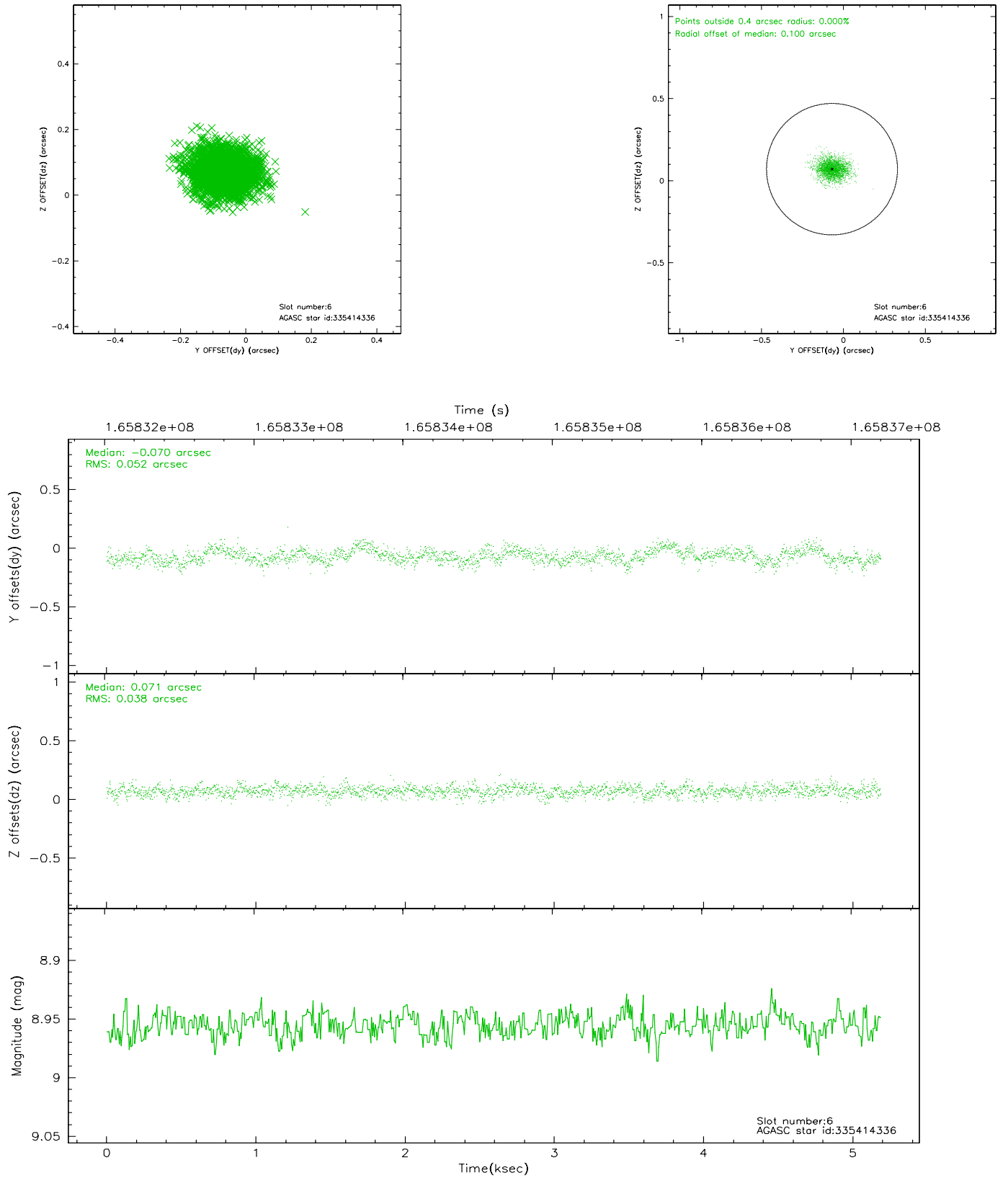
2.4.2 Slot 4



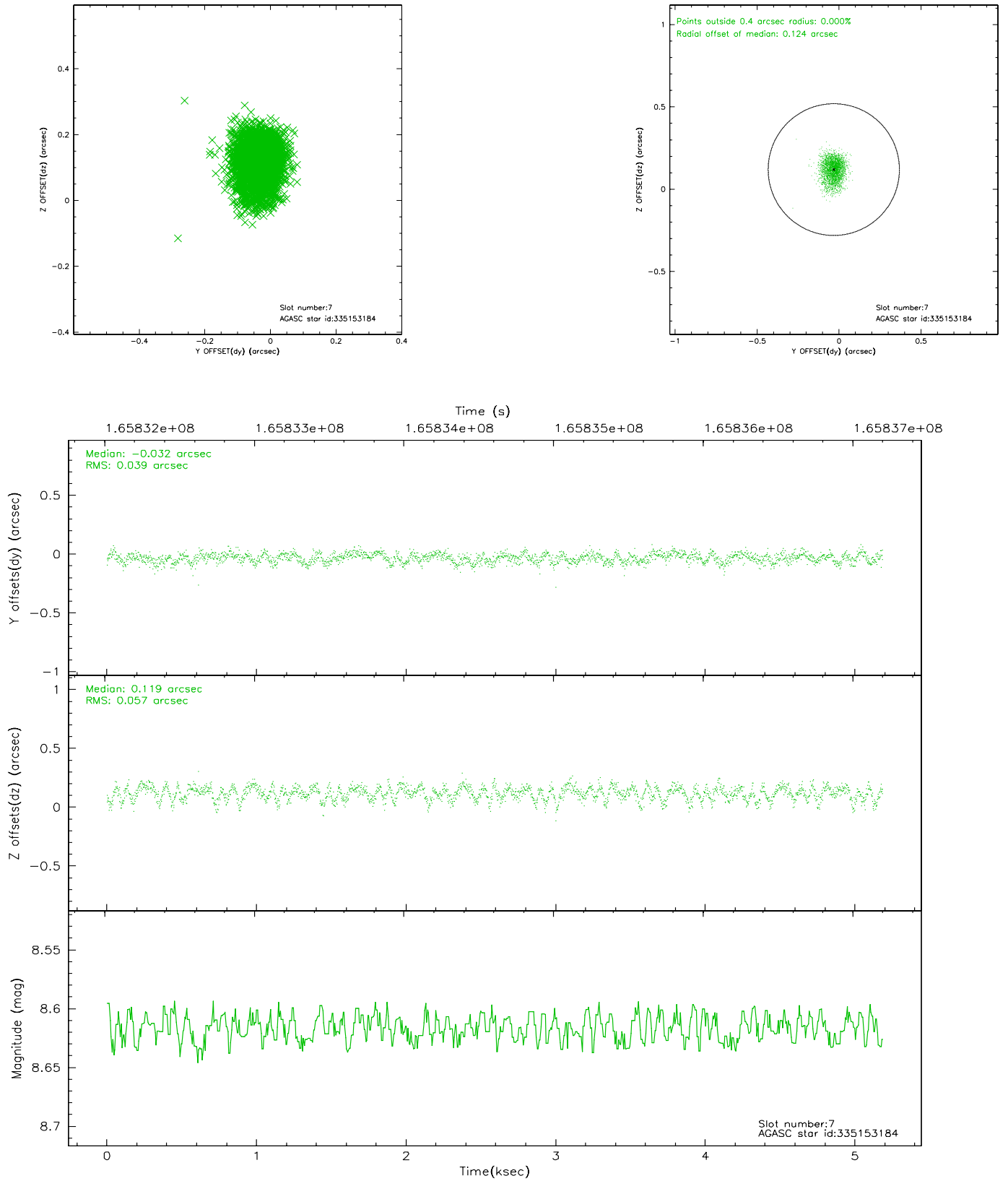
2.4.3 Slot 5



2.4.4 Slot 6

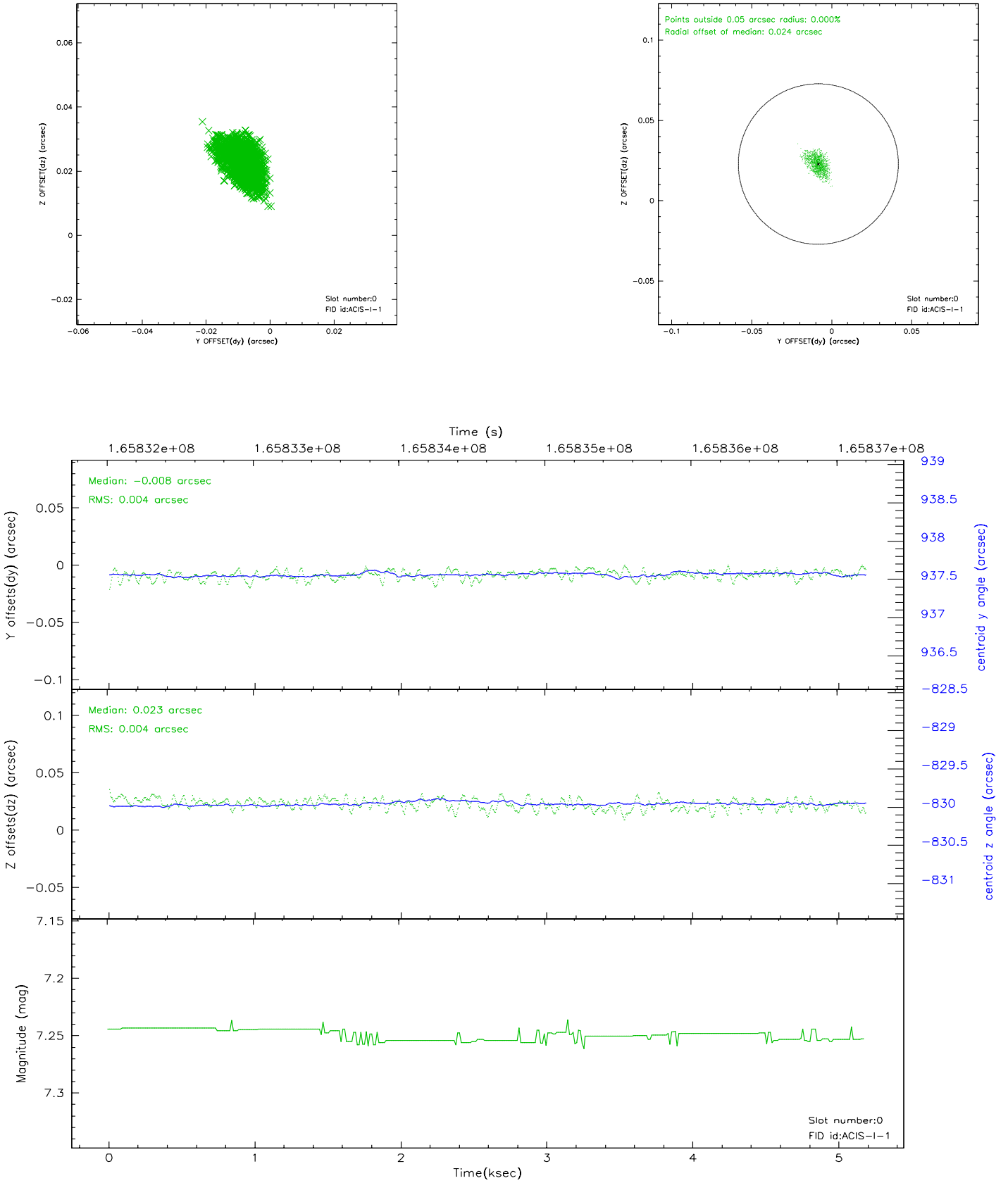


2.4.5 Slot 7

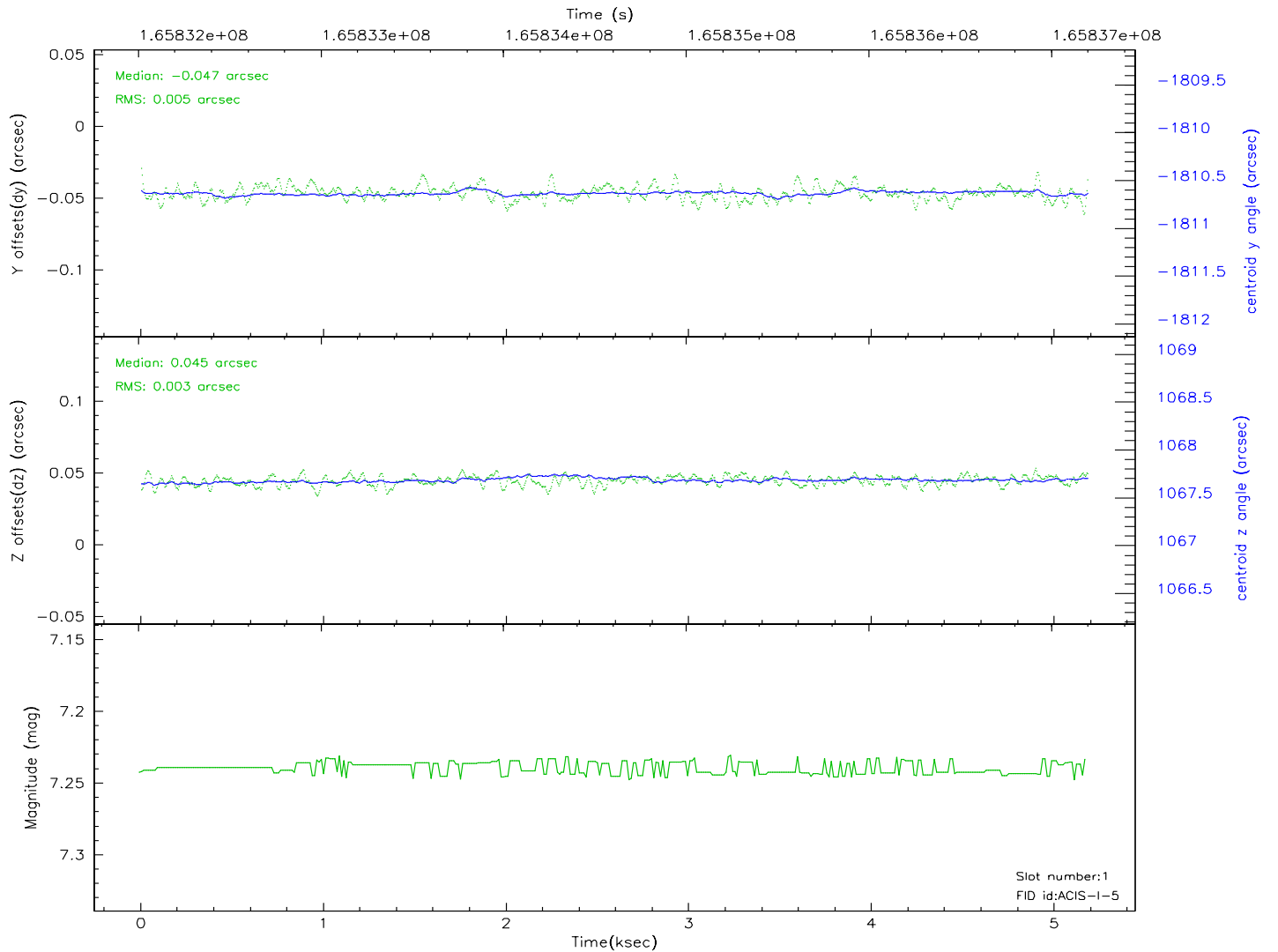
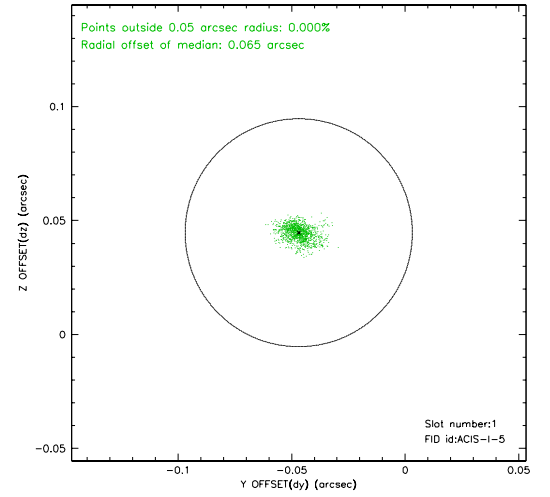
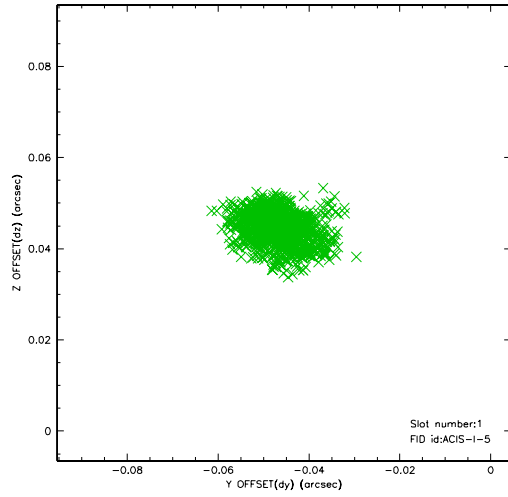


2.5 FID Slots

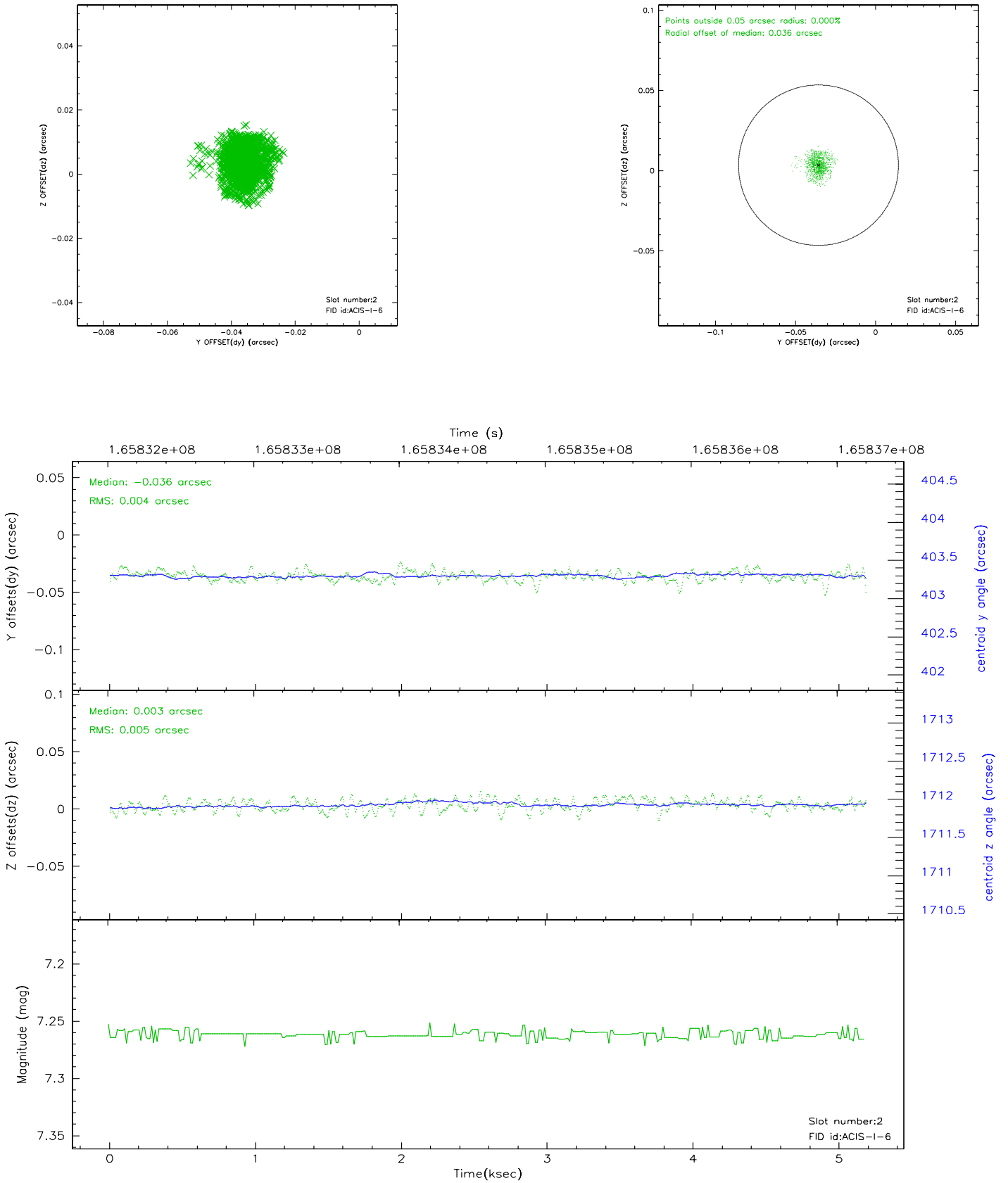
2.5.1 Slot 0



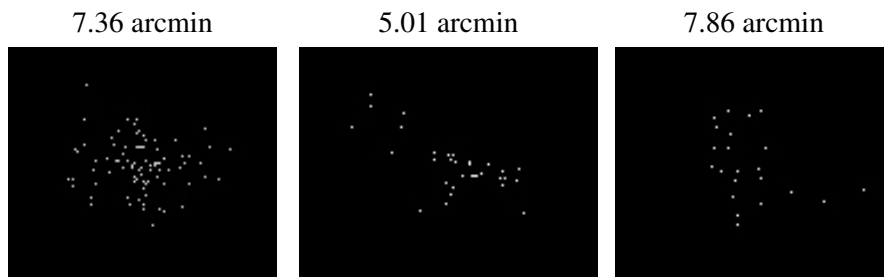
2.5.2 Slot 1



2.5.3 Slot 2



3 Point Sources



A Summary

A.1 Status

V&V Scientist	Jen Lauer
V&V Date (YYYY-MM-DD)	2006.07.30
V&V Edition	1
V&V Disposition and Status	OK
V&V Charge Time	4.773

A.2 Comments