

# V&V Reference Report

## L2 ASCDS Version : 7.6.8

Observation 3593 - L2 Version 001  
Chandra X-Ray Center

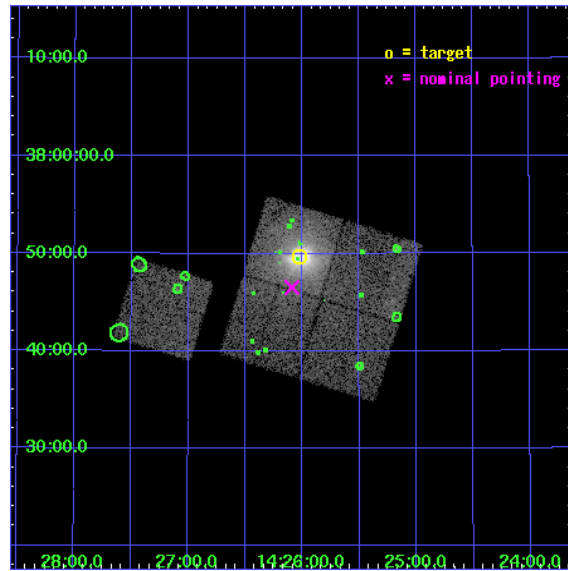
L2 Processing Date : Jul 7 2006

## Contents

<b>1</b>	<b>Front</b>	<b>2</b>
<b>2</b>	<b>OBI</b>	<b>3</b>
2.1	OBI . . . . .	3
2.1.1	Images . . . . .	3
2.1.2	Bias . . . . .	3
2.1.3	Parameters . . . . .	4
2.1.4	Events . . . . .	4
2.2	Compared Parameters . . . . .	5
2.3	Aspect . . . . .	6
2.4	Star Slots . . . . .	9
2.4.1	Slot 3 . . . . .	9
2.4.2	Slot 4 . . . . .	10
2.4.3	Slot 5 . . . . .	11
2.4.4	Slot 6 . . . . .	12
2.4.5	Slot 7 . . . . .	13
2.5	FID Slots . . . . .	14
2.5.1	Slot 0 . . . . .	14
2.5.2	Slot 1 . . . . .	15
2.5.3	Slot 2 . . . . .	16
<b>3</b>	<b>Point Sources</b>	<b>17</b>
<b>A</b>	<b>Summary</b>	<b>18</b>
A.1	Status . . . . .	18
A.2	Comments . . . . .	18

# 1 Front

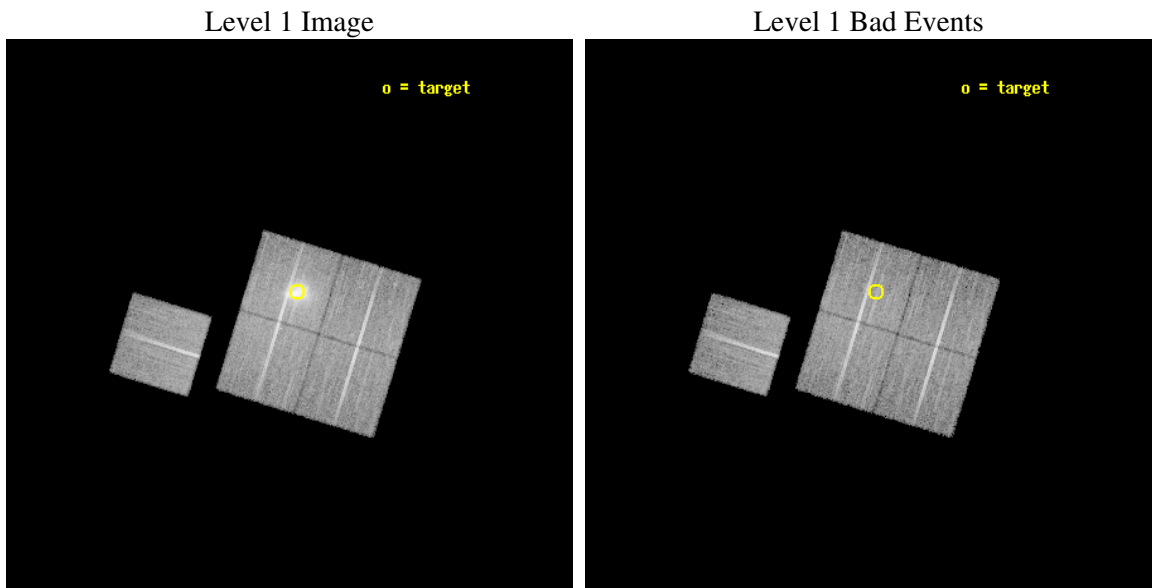
seq_num	800314
obs_id	3593
title	X-RAY/SZ DETERMINATION OF COSMOLOGICAL PARAMETERS
observer	DR. LEON VANSPEYBROECK
object	A1914
dtcycle	0
cycle	P
ra_targ	216.505
dec_targ	37.828
ra_nom	216.52269972395
dec_nom	37.775542519678
roll_nom	287.03663415415
revision	2
ontime	19120.759003013
livetime	18870.932210141
ontime0	19117.618012875
ontime1	19117.618042797
ontime2	19123.89996323
ontime3	19120.759003013
ontime6	19120.758993
l2events	87180



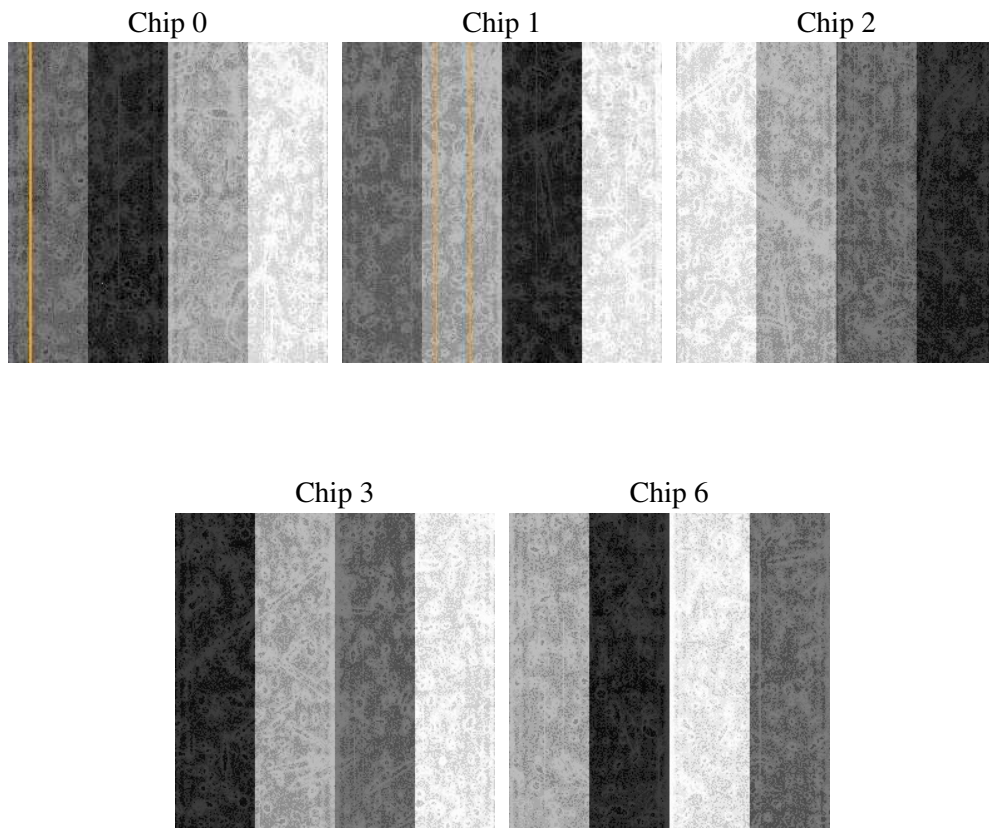
## 2 OBI

### 2.1 OBI

#### 2.1.1 Images



#### 2.1.2 Bias



### 2.1.3 Parameters

obi_num	0
ascdsver	7.6.8
caldbver	3.2.2
date	2006-07-08T01:36:51
revision	2

sched_exp_time	19000.000000
ontime	19125.554749191
ontime0	19122.413759053
ontime1	19122.413788974
ontime2	19128.695709407
ontime3	19125.554749191
ontime6	19125.554739177
l1events	539382

### 2.1.4 Events

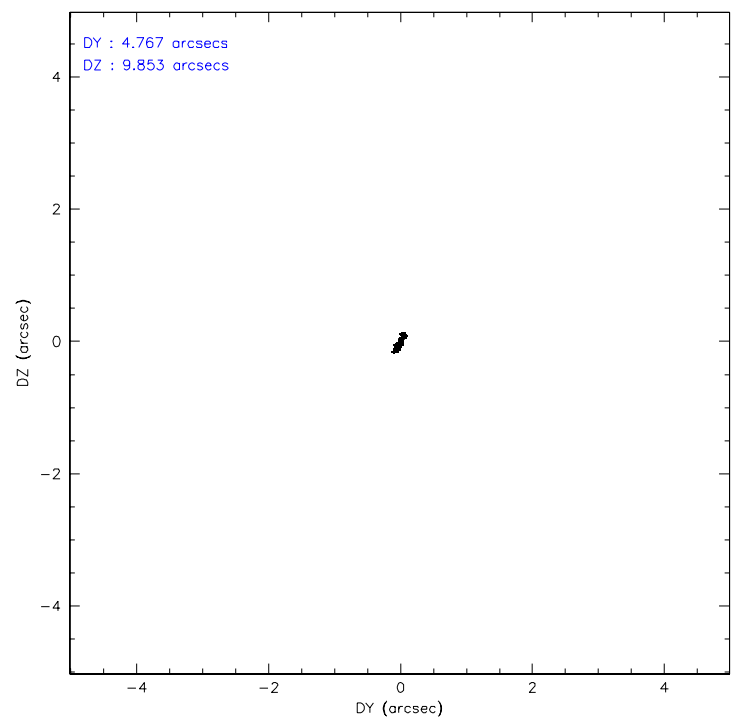
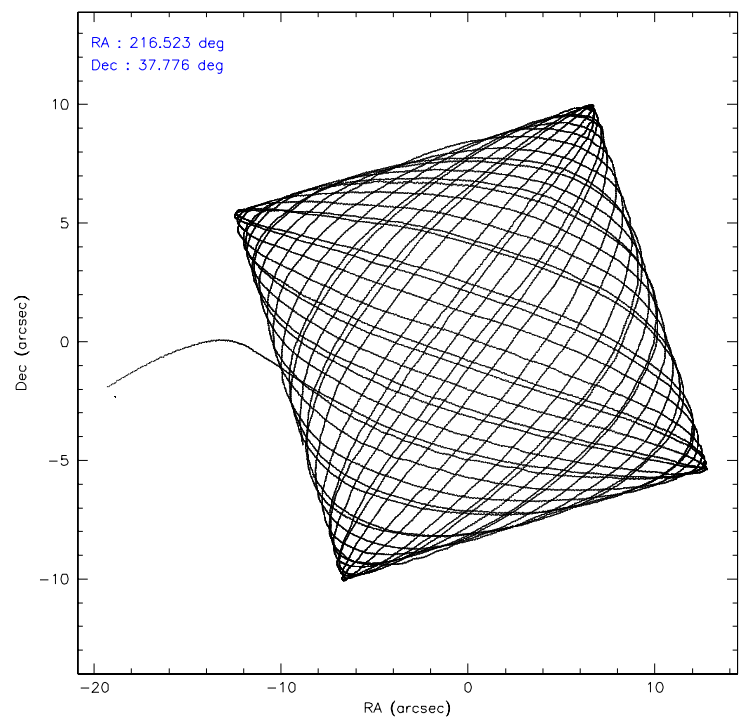
	ccd 0	ccd 1	ccd 2	ccd 3	ccd 6
level 1 events	92066	95098	103589	147757	100872
rejected events	82122	83187	92608	93449	90772
rejected %	89%	87%	89%	63%	89%

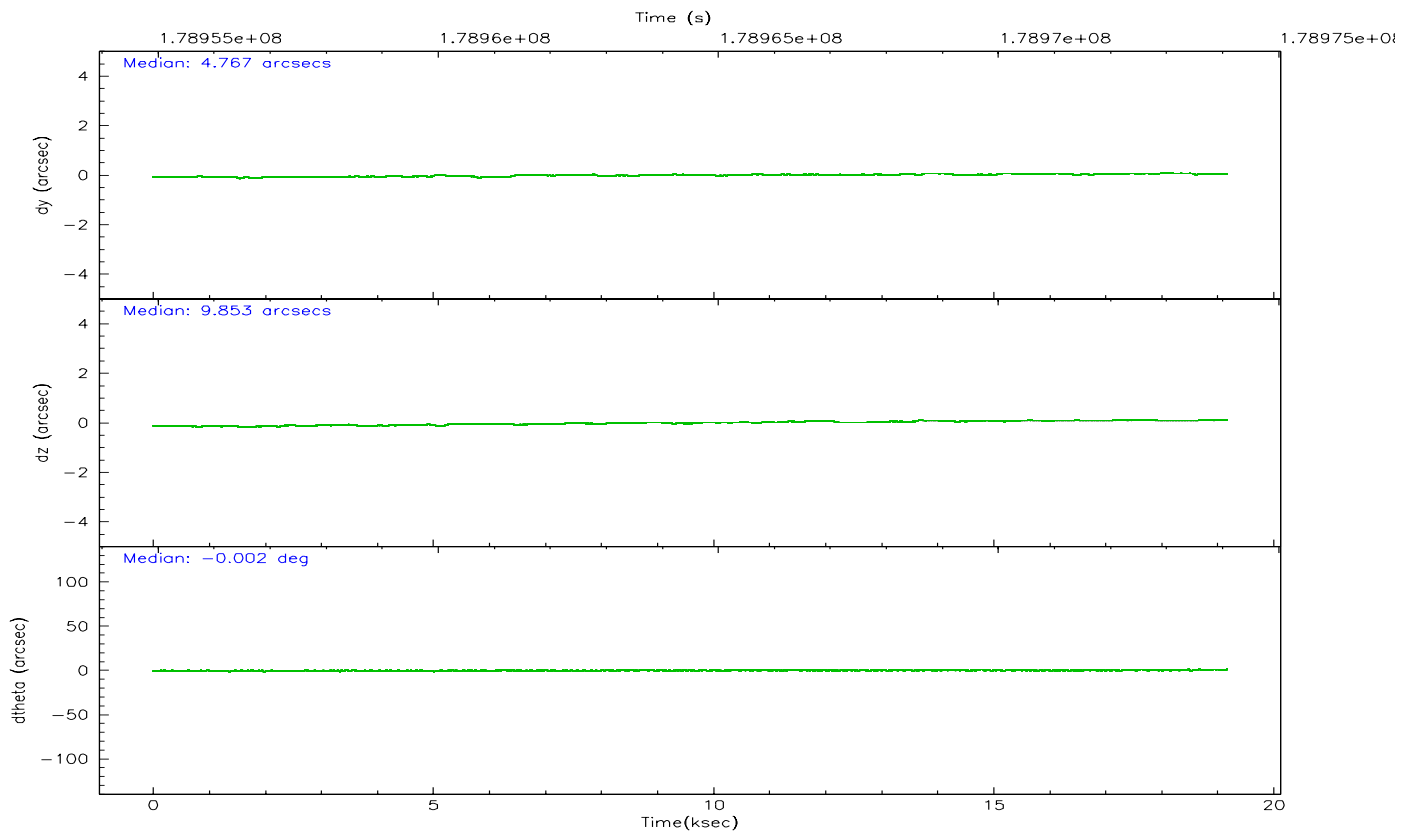
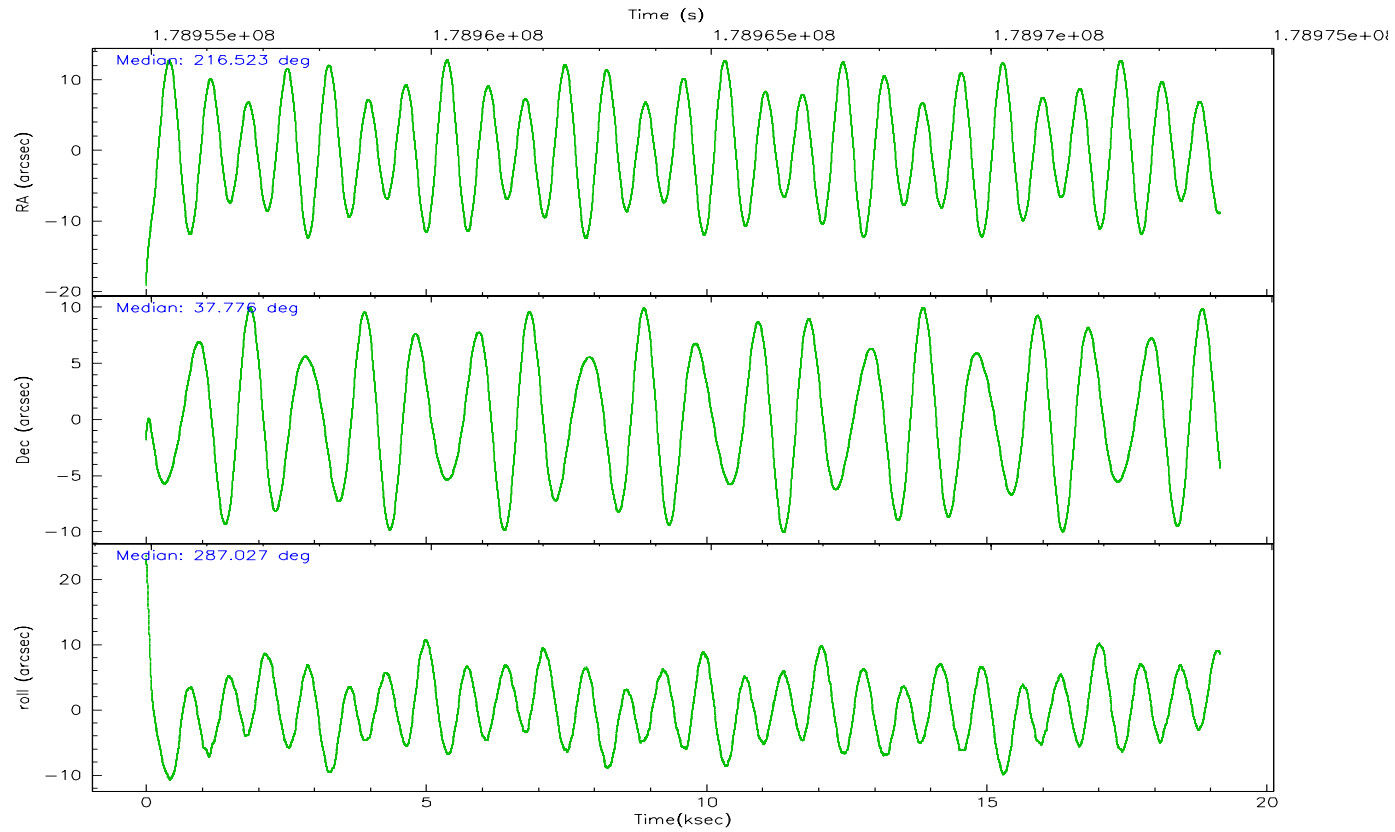
	ccd 0	ccd 1	ccd 2	ccd 3	ccd 6
grade 0 events	3559	4676	4572	40036	3518
	3%	4%	4%	27%	3%
grade 1 events	37	38	51	234	39
	0%	0%	0%	0%	0%
grade 2 events	2249	2454	2323	6335	2164
	2%	2%	2%	4%	2%
grade 3 events	1153	1314	1138	2429	1185
	1%	1%	1%	1%	1%
grade 4 events	1109	1278	1087	2521	1170
	1%	1%	1%	1%	1%
grade 5 events	3450	3834	3337	4068	3862
	3%	4%	3%	2%	3%
grade 6 events	1878	2194	1862	3001	2064
	2%	2%	1%	2%	2%
grade 7 events	78631	79310	89219	89133	86870
	85%	83%	86%	60%	86%

## 2.2 Compared Parameters

Parameter	Planned	Actual	Parameter	Planned	Actual
Instrument	ACIS	ACIS	Obspar format version number	6	6
Detector	ACIS-01236	ACIS-01236	Obspar file type	PREDICTED	ACTUAL
Grating	NONE	NONE	Obspar update status	NONE	UPDATED
Data mode	VFAINT	VFAINT	On-chip summing requested	N	N
Observation mode	POINTING	POINTING	Subarray requested	NONE	NONE
Pointing RA	216.497266	216.5226997239496	Alternating exposures requested	N	N
Pointing Dec	37.794110	37.77554251967791	Primary exposure time	0.000000	3.1
Pointing Roll	286.843524	287.0366341541532			
SIM focus pos (mm)	-0.782348	-0.7809083437167272			
SIM defocus (mm)	0	0.001439871863259334			
SIM translation stage pos (mm)	-225.840463	-225.8433433320239			
SIM translation stage offset (mm)	-7.752	-7.749109670905796			
Observation start time	178955078.184000	178954106.85123			
Observation start date	2003-09-03T05:43:34	2003-09-03T05:28:26			
Observation end time	178974078.184000	178974824.15212			
Observation end date	2003-09-03T11:00:14	2003-09-03T11:13:44			
Read mode	TIMED	TIMED			

2.3 Aspect





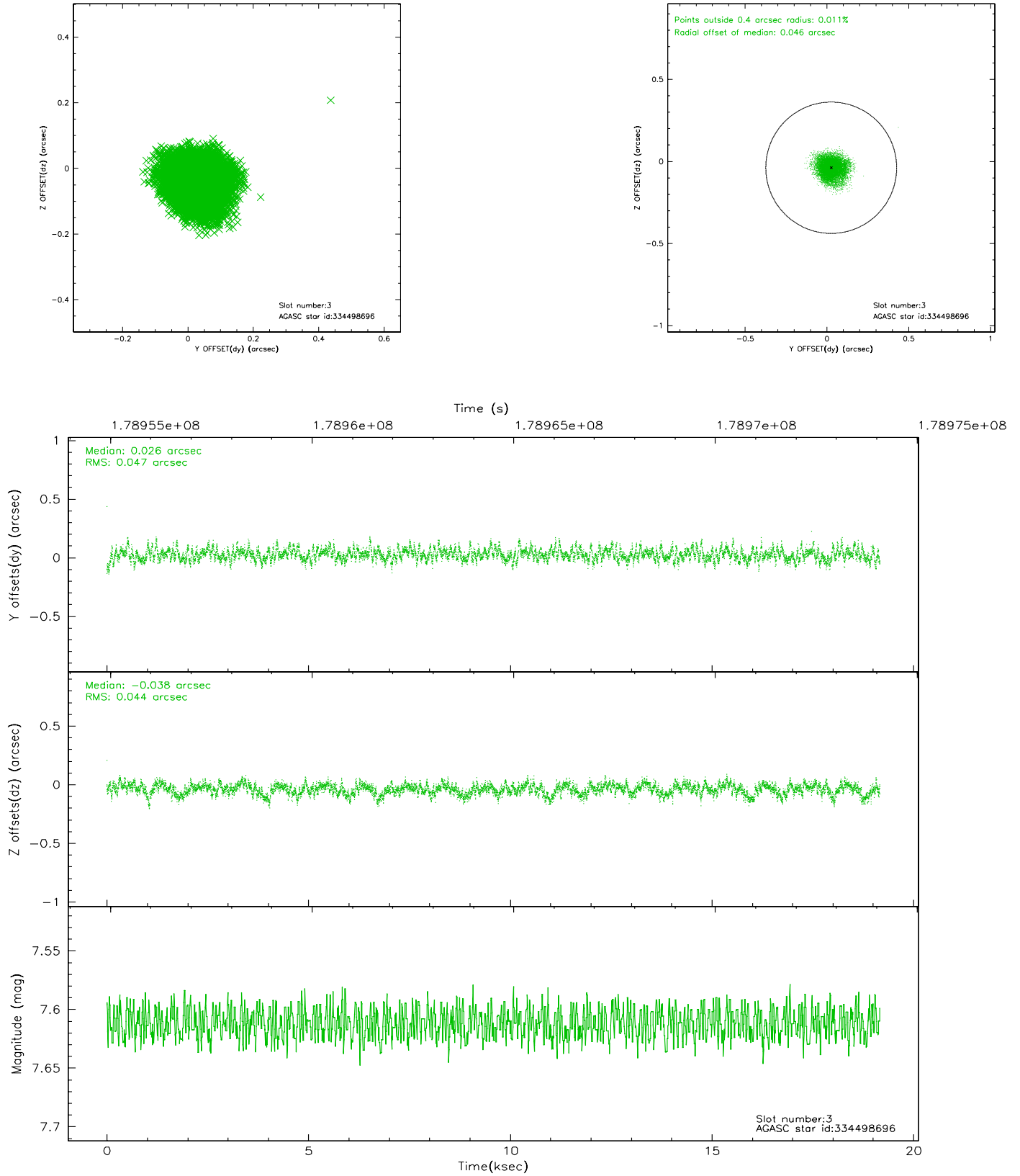
### Slot Statistics

slot	status	id	mag	n_pts	med_dy	med_dz	dr1	dr2	ra	dec	mean_y	mean_z
0	FID	ACIS-I-1	7.22	4675	0.060	-0.042	0.007	0.012	0.000000	0.000000	934.89	-992.44
1	FID	ACIS-I-5	7.22	4675	-0.208	0.061	0.007	0.011	0.000000	0.000000	-1813.36	905.03
2	FID	ACIS-I-6	7.25	4674	0.056	0.053	0.006	0.011	0.000000	0.000000	400.22	1549.75
3	GUIDE	334498696	7.61	9347	0.026	-0.038	0.069	0.112	215.863981	37.206551	1493.04	-2348.88
4	GUIDE	397807608	10.29	9343	-0.054	0.077	0.142	0.235	215.666147	37.953309	-1241.39	-2089.06
5	GUIDE	397808560	9.87	9344	0.072	0.001	0.113	0.184	216.564463	37.977903	-577.77	373.99
6	GUIDE	397940208	9.75	9345	-0.022	-0.090	0.097	0.156	217.129334	38.261499	-1098.66	2199.36
7	GUIDE	397943760	7.94	9350	-0.023	0.055	0.065	0.107	217.039857	37.556695	1262.44	1236.49

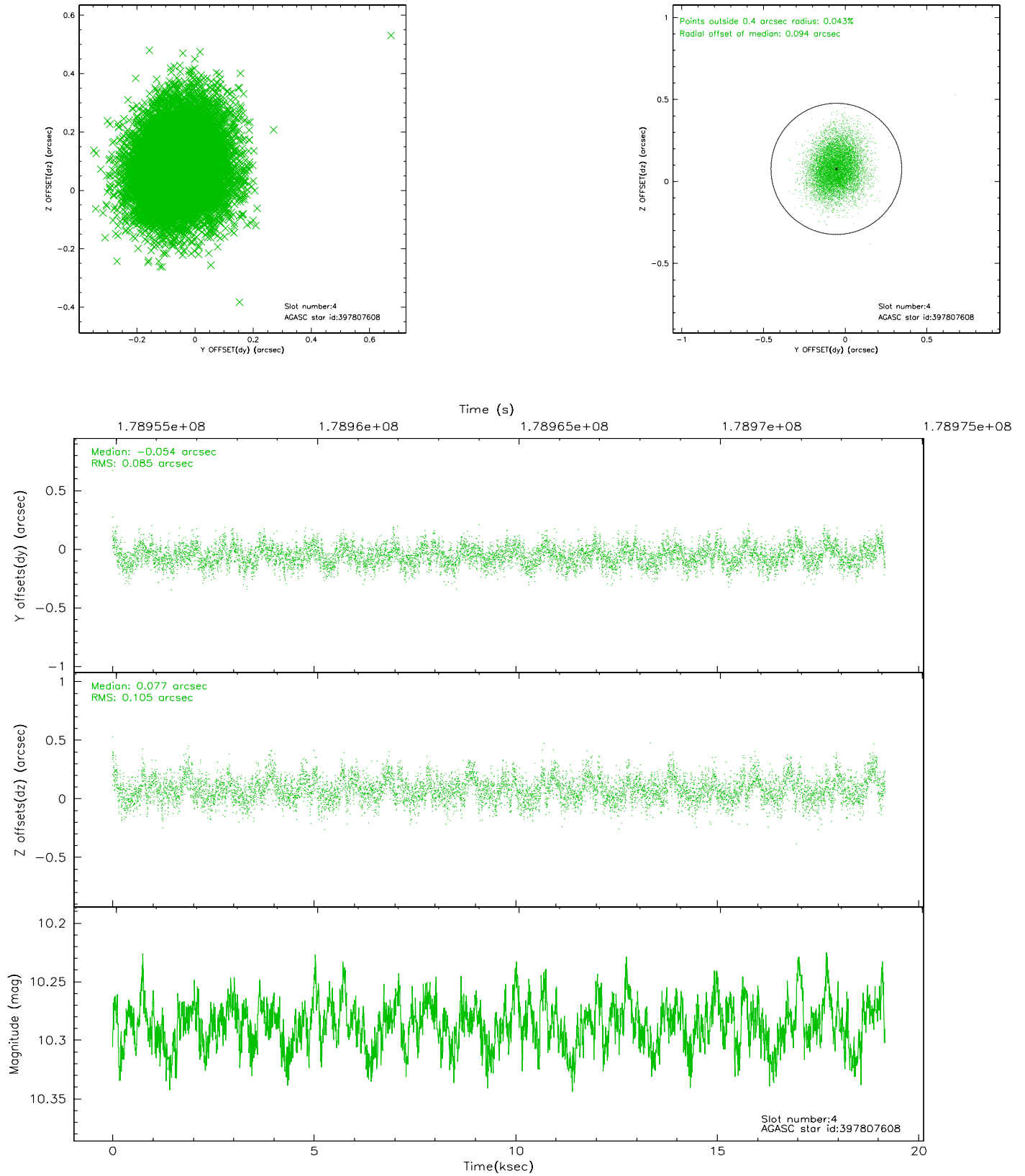


## 2.4 Star Slots

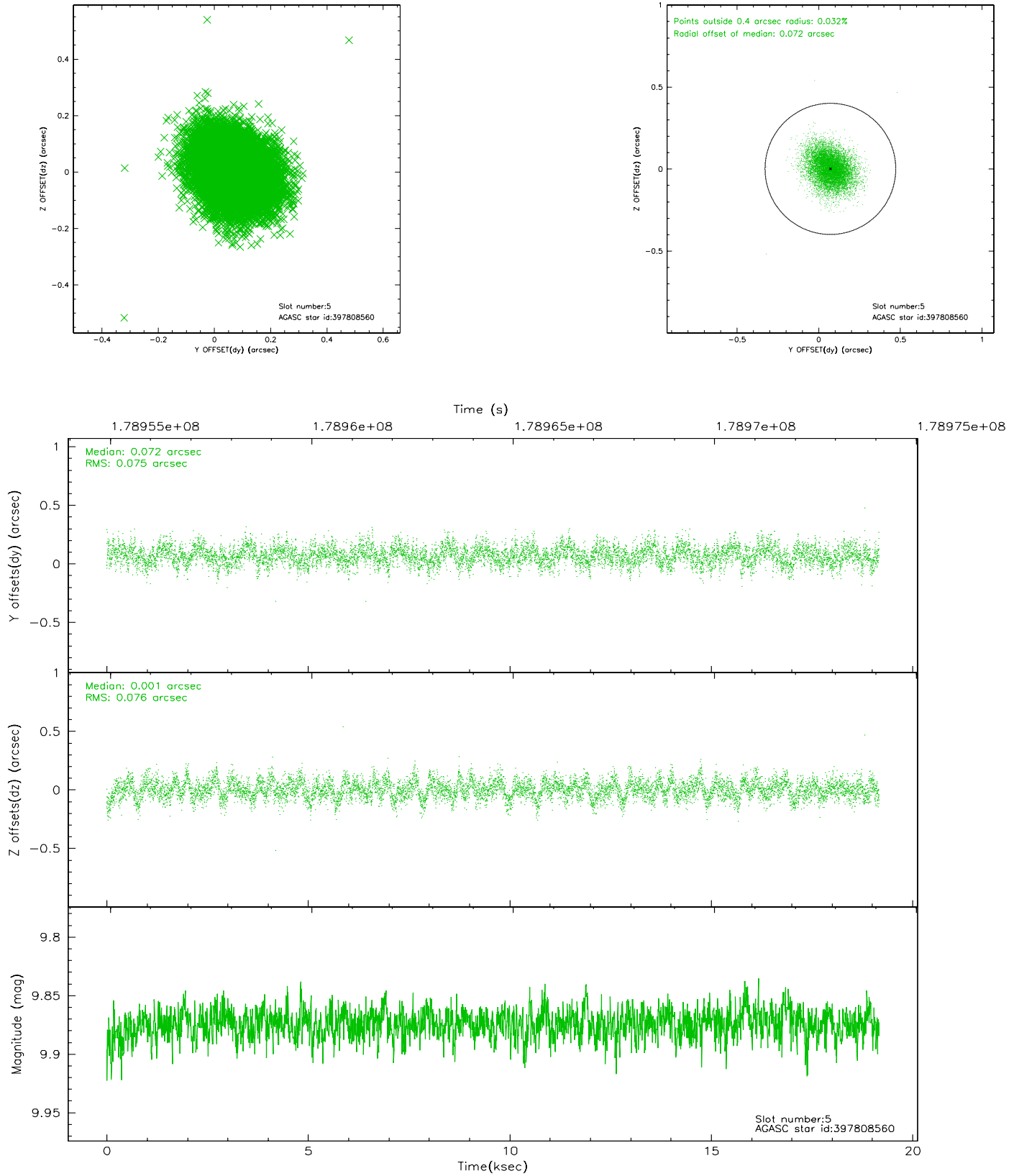
### 2.4.1 Slot 3



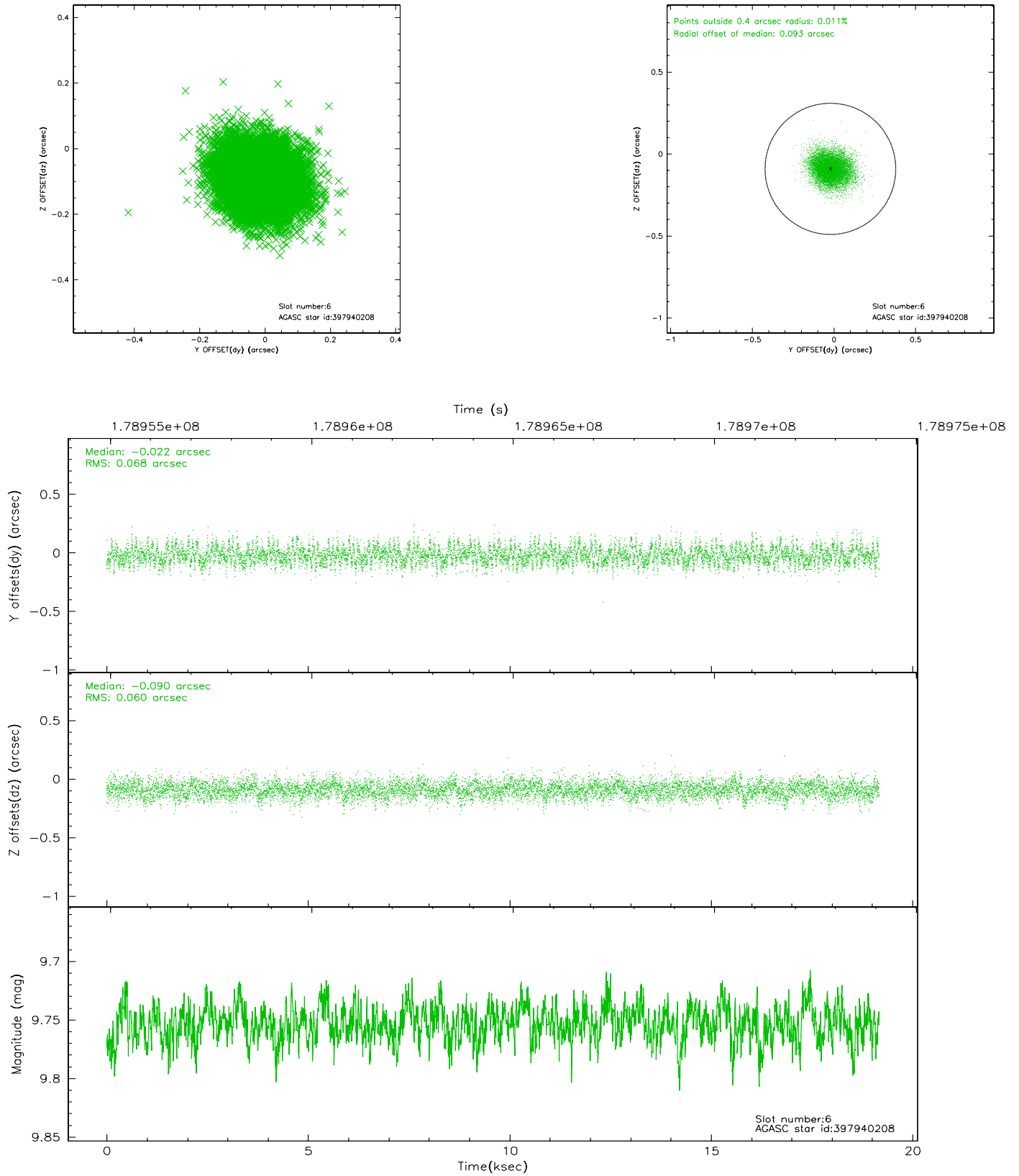
## 2.4.2 Slot 4



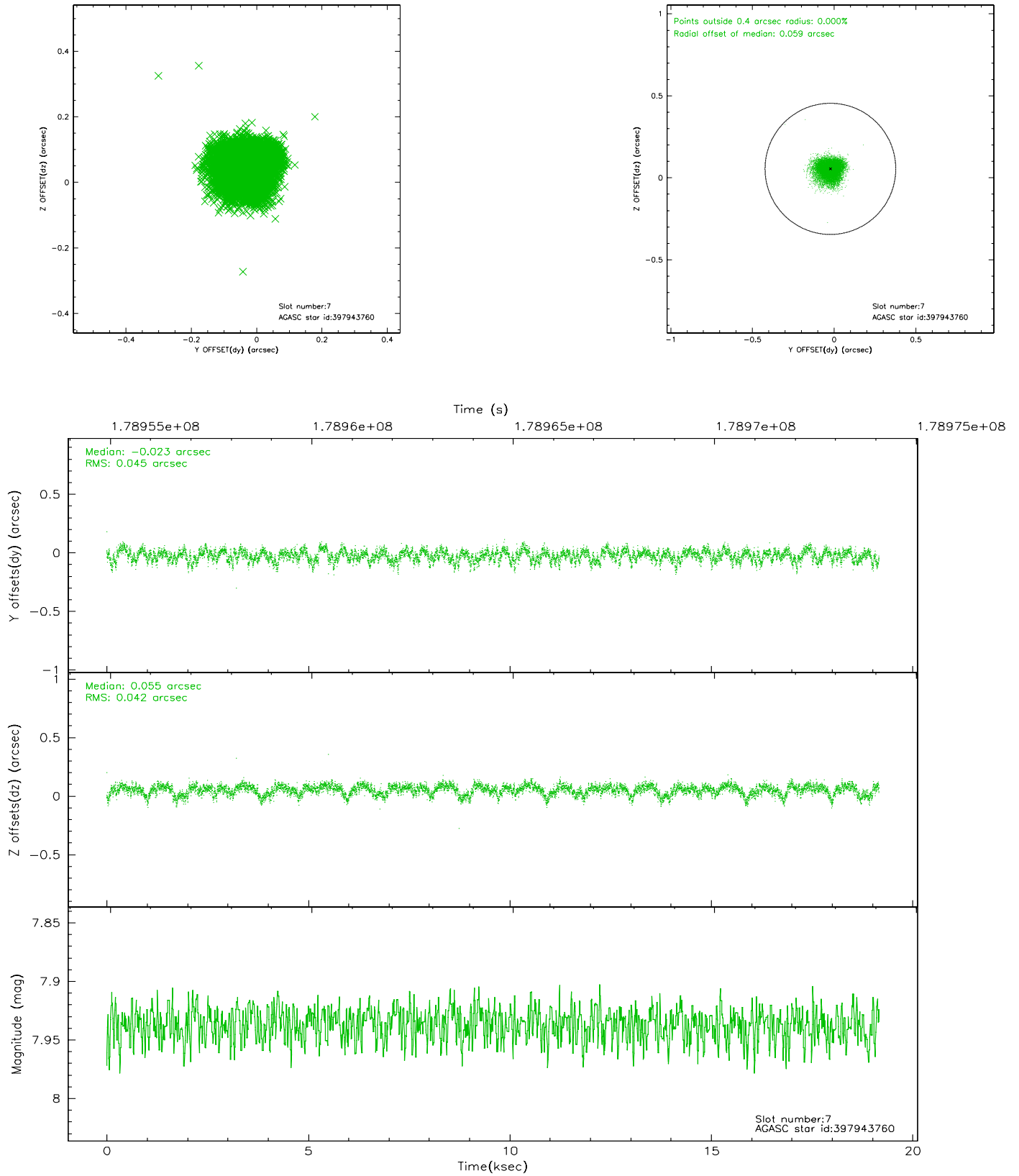
### 2.4.3 Slot 5



## 2.4.4 Slot 6

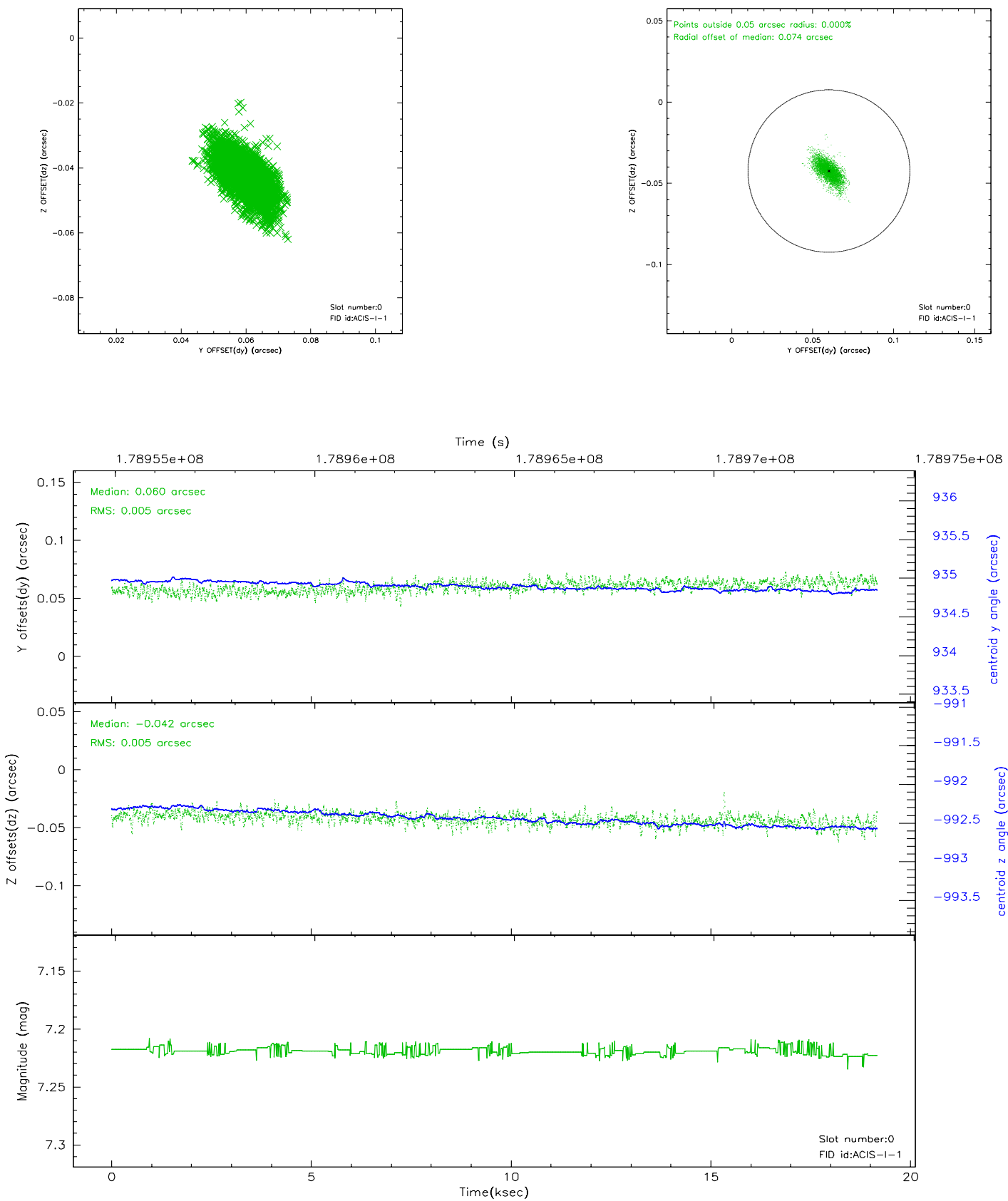


## 2.4.5 Slot 7

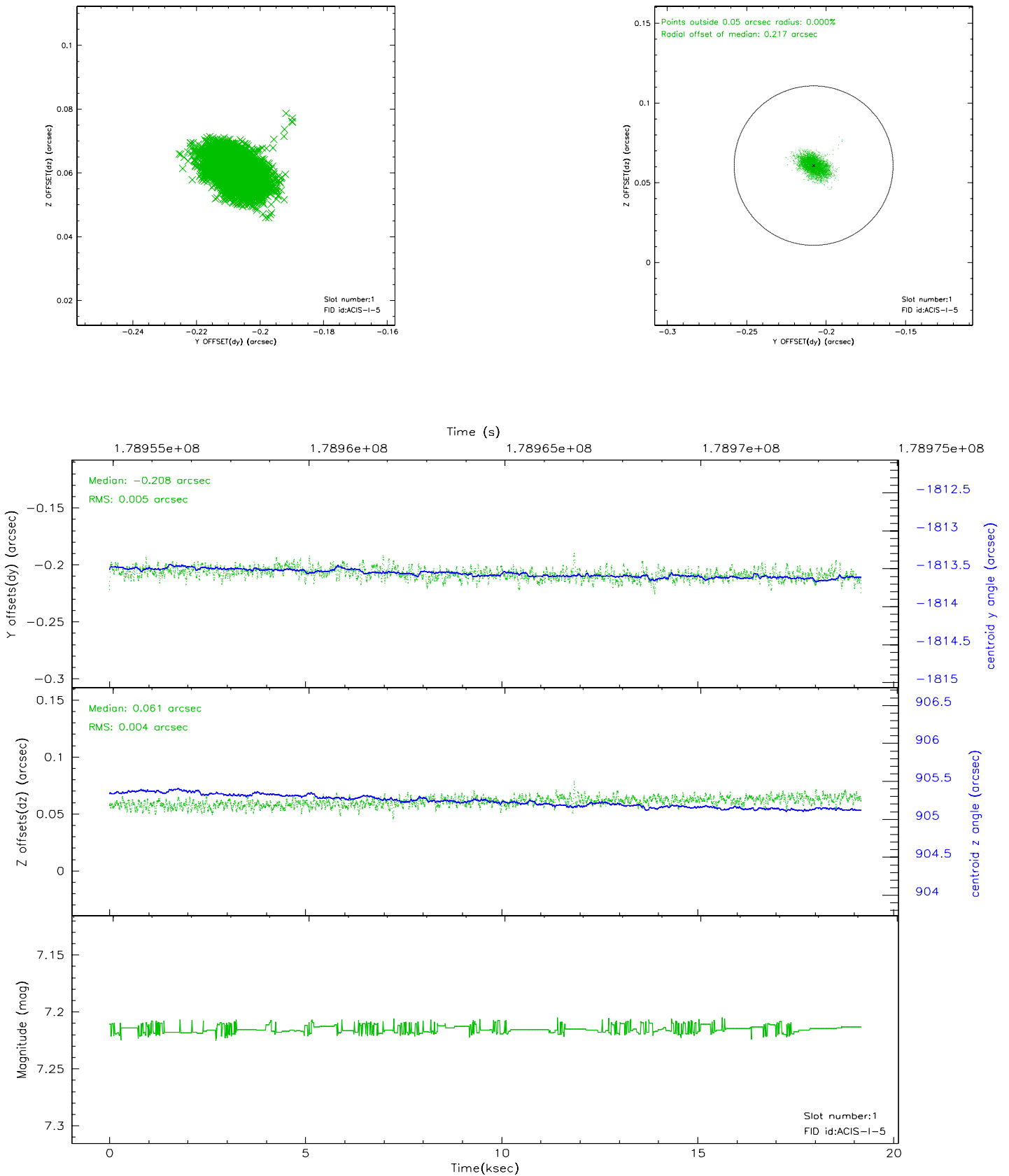


## 2.5 FID Slots

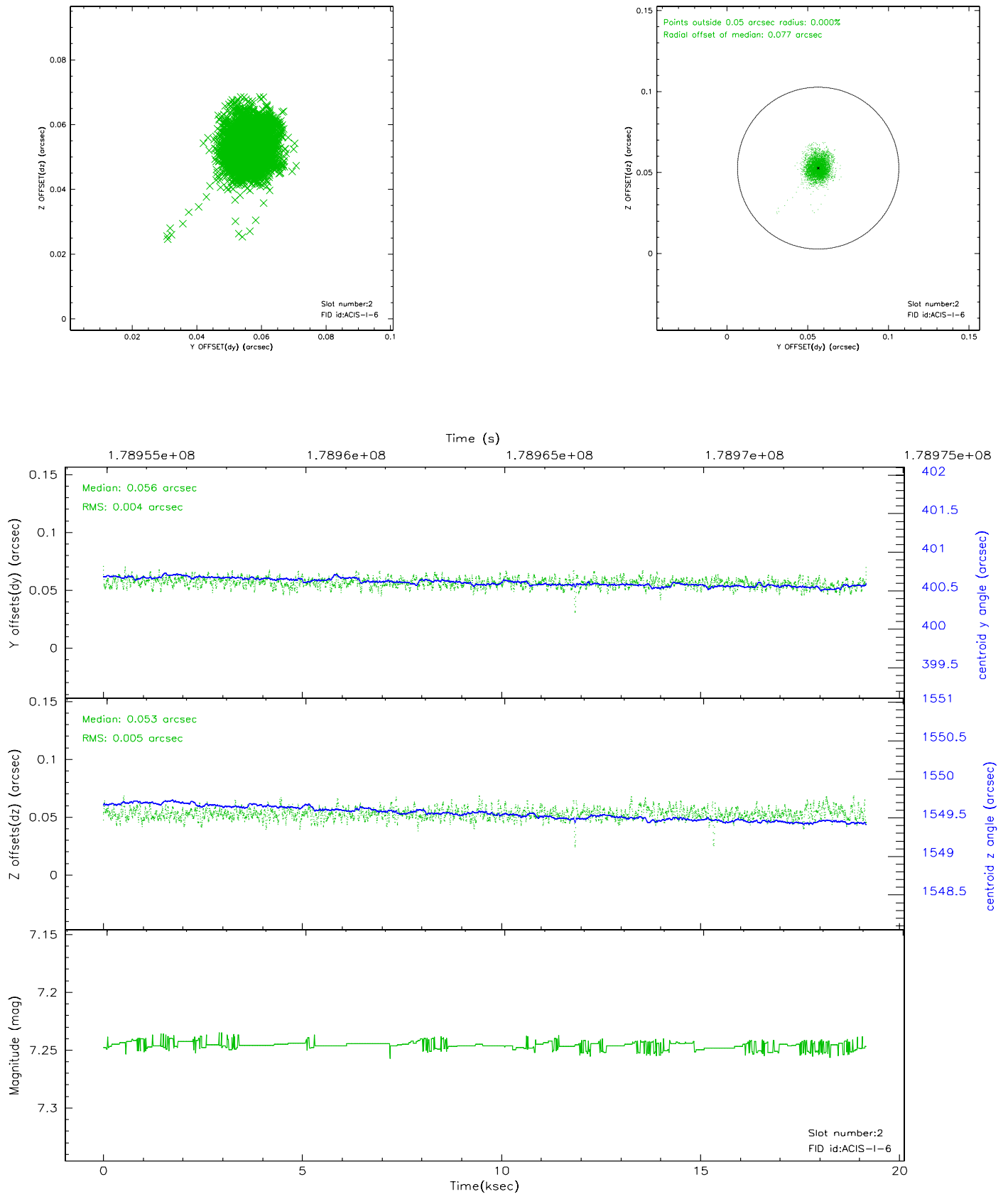
### 2.5.1 Slot 0



## 2.5.2 Slot 1

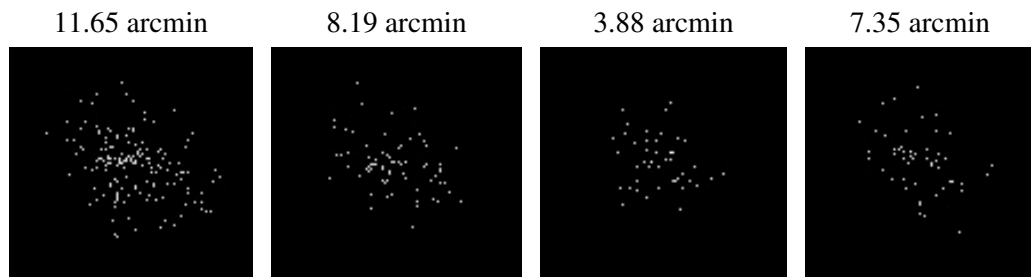


### 2.5.3 Slot 2





### 3 Point Sources



## A Summary

### A.1 Status

V&V Scientist	Jen Lauer
V&V Date (YYYY-MM-DD)	2006.07.10
V&V Edition	1
V&V Disposition and Status	OK
V&V Charge Time	19.123

### A.2 Comments