

V&V Reference Report

L2 ASCDS Version : 8.4.5

Observation 3583 - L2 Version 3
Chandra X-Ray Center

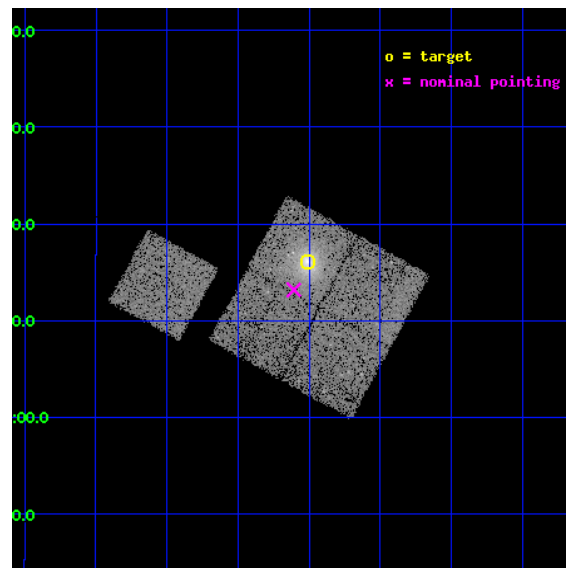
L2 Processing Date : Oct 20 2012

Contents

1	Front	2
2	OBI	3
2.1	OBI	3
2.1.1	Images	3
2.1.2	Bias	3
2.1.3	Parameters	4
2.1.4	Events	4
2.2	Compared Parameters	5
2.3	Aspect	6
2.4	Star Slots	9
2.4.1	Slot 3	9
2.4.2	Slot 4	10
2.4.3	Slot 5	11
2.4.4	Slot 6	12
2.4.5	Slot 7	13
2.5	FID Slots	14
2.5.1	Slot 0	14
2.5.2	Slot 1	15
2.5.3	Slot 2	16
A	Summary	17
A.1	Status	17
A.2	Comments	17

1 Front

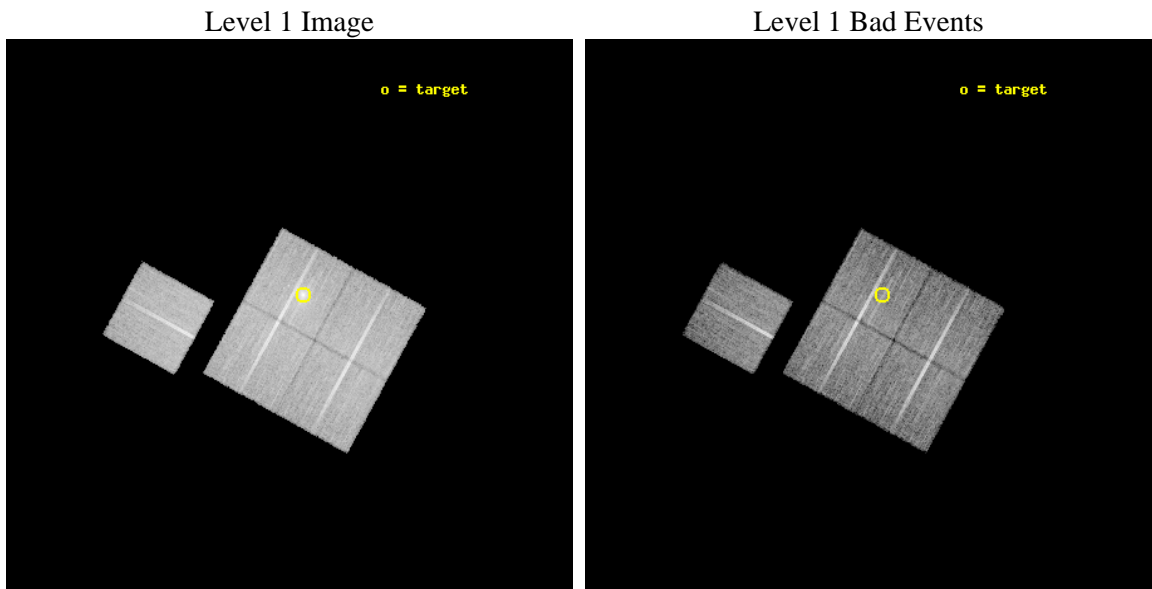
seq_num	800304	Sequence number
obs_id	3583	Observation id
title	X-RAY/SZ DETERMINATION OF COSMOLOGICAL PARAMETERS	Proposal title
observer	DR. LEON VANSPEYBROECK	Principal investigator
object	RXJ0439.0+0715	Source name
dtcycle	0	
cycle	P	events from which exps? Prim/Second/Both
ra_targ	69.752083	Observer's specified target RA [deg]
dec_targ	7.268333	Observer's specified target Dec [deg]
ra_nom	69.77672656798	Nominal RA [deg]
dec_nom	7.2198453816183	Nominal Dec [deg]
roll_nom	298.83039646945	Nominal Roll [deg]
revision	3	Processing version of data
ontime	19467.999962538	Sum of GTIs [s]
livetime	19213.636210895	Livetime [s]
ontime0	19467.999962538	Sum of GTIs [s]
ontime1	19467.999962538	Sum of GTIs [s]
ontime2	19461.718002111	Sum of GTIs [s]
ontime3	19467.999962538	Sum of GTIs [s]
ontime6	19467.999962538	Sum of GTIs [s]
l2events	56247	Number of level 2 events



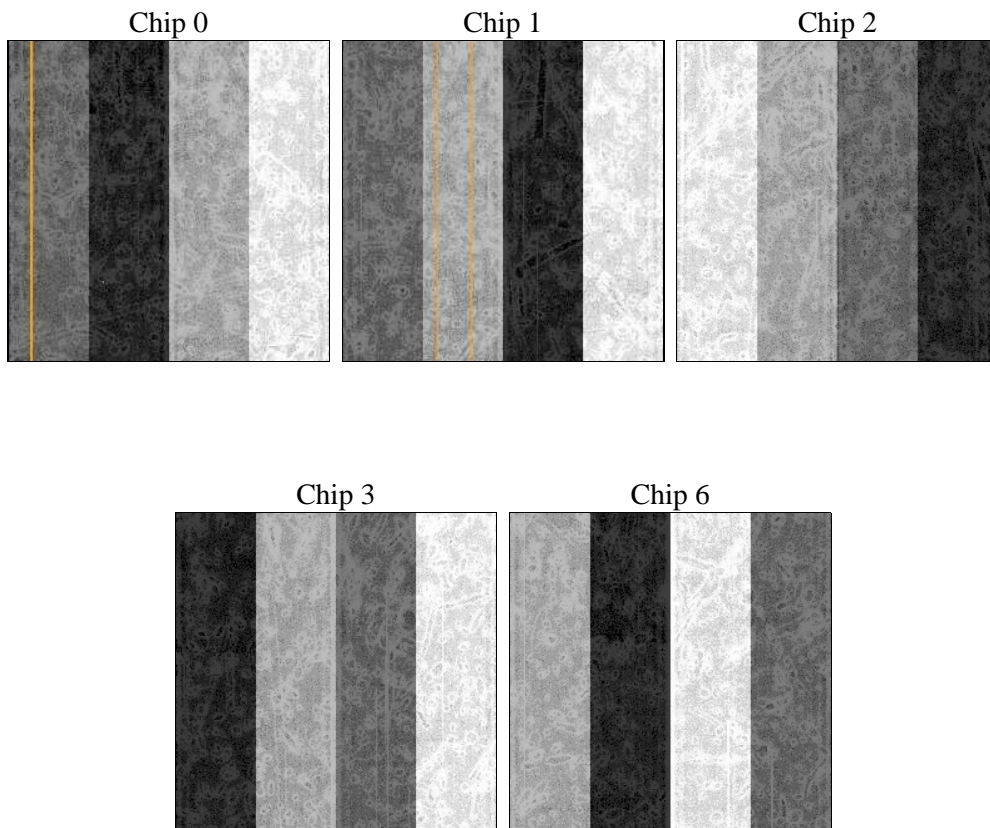
2 OBI

2.1 OBI

2.1.1 Images



2.1.2 Bias



2.1.3 Parameters

obi_num	1	Obi number	sched_exp_time	19289.847000	[s] Scheduled observation exposure time
ascdsver	8.4.5	Processing system revision	ontime	19467.999962538	Sum of GTIs [s]
caldsver	4.5.2	 	ontime0	19467.999962538	Sum of GTIs [s]
date	2012-10-20T16:54:28	Date and time of file creation	ontime1	19467.999962538	Sum of GTIs [s]
revision	3	Processing version of data	ontime2	19461.718002111	Sum of GTIs [s]
			ontime3	19467.999962538	Sum of GTIs [s]
			ontime6	19467.999962538	Sum of GTIs [s]
			l1events	525908	Number of level 1 events

2.1.4 Events

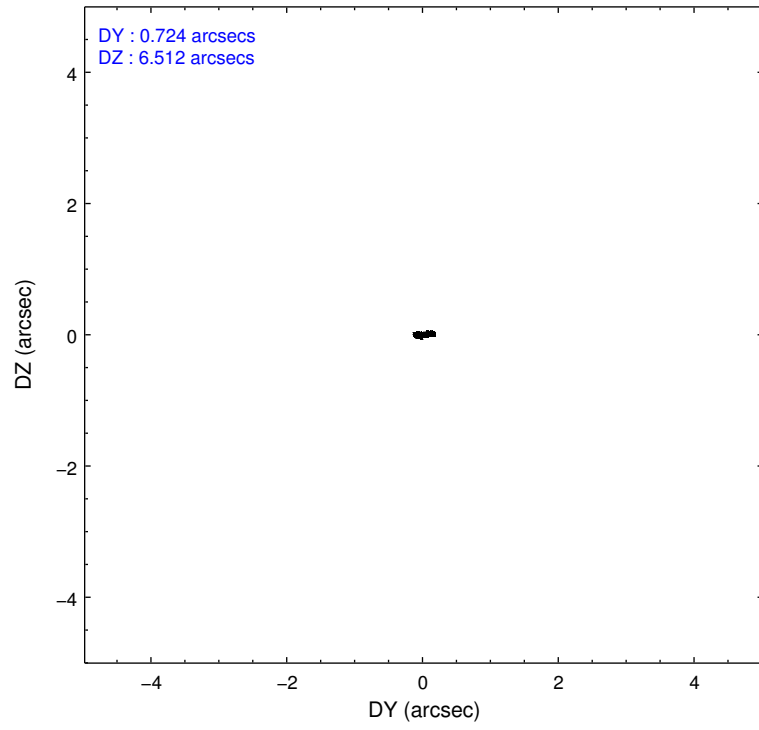
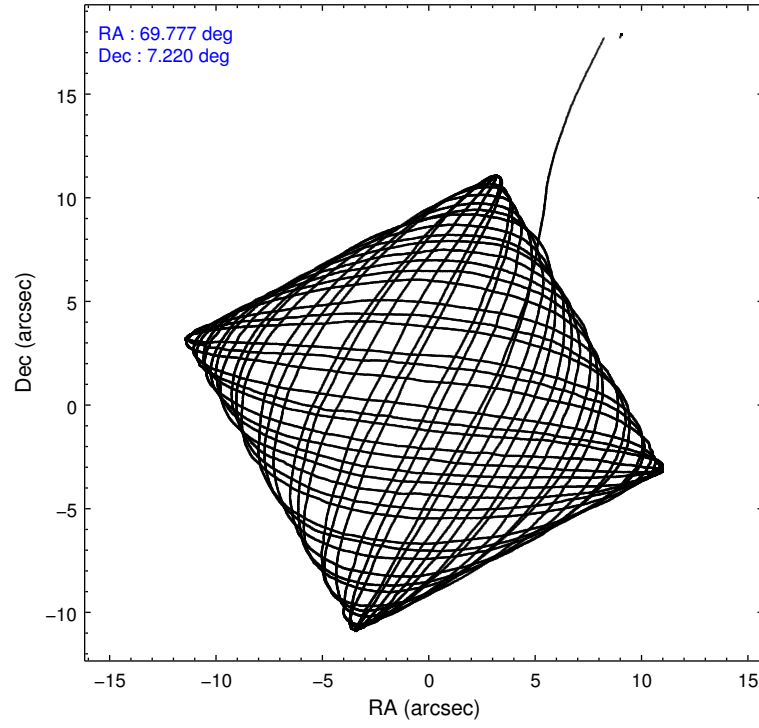
	ccd 0	ccd 1	ccd 2	ccd 3	ccd 6
level 1 events	96748	98807	107933	117715	104705
rejected events	86509	87151	97772	94920	93996
rejected %	89%	88%	90%	80%	89%

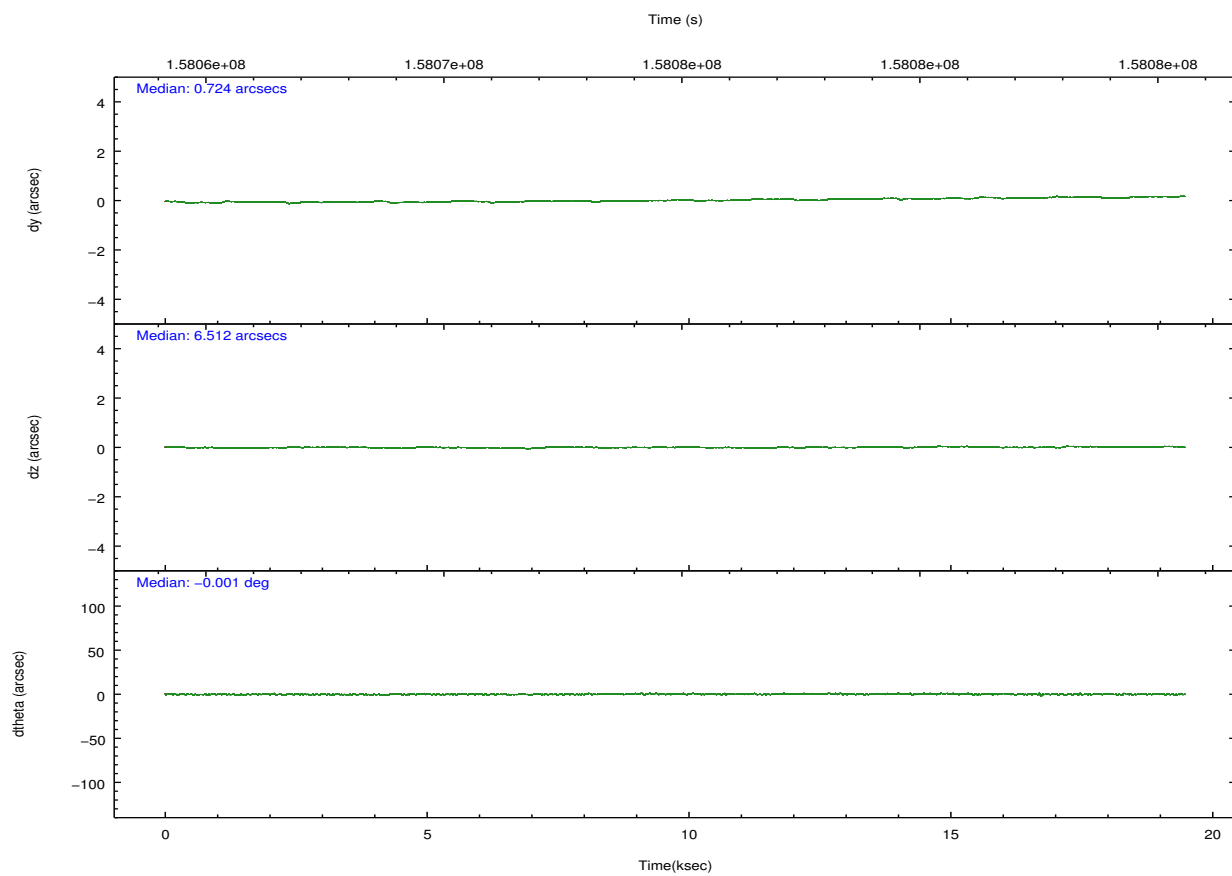
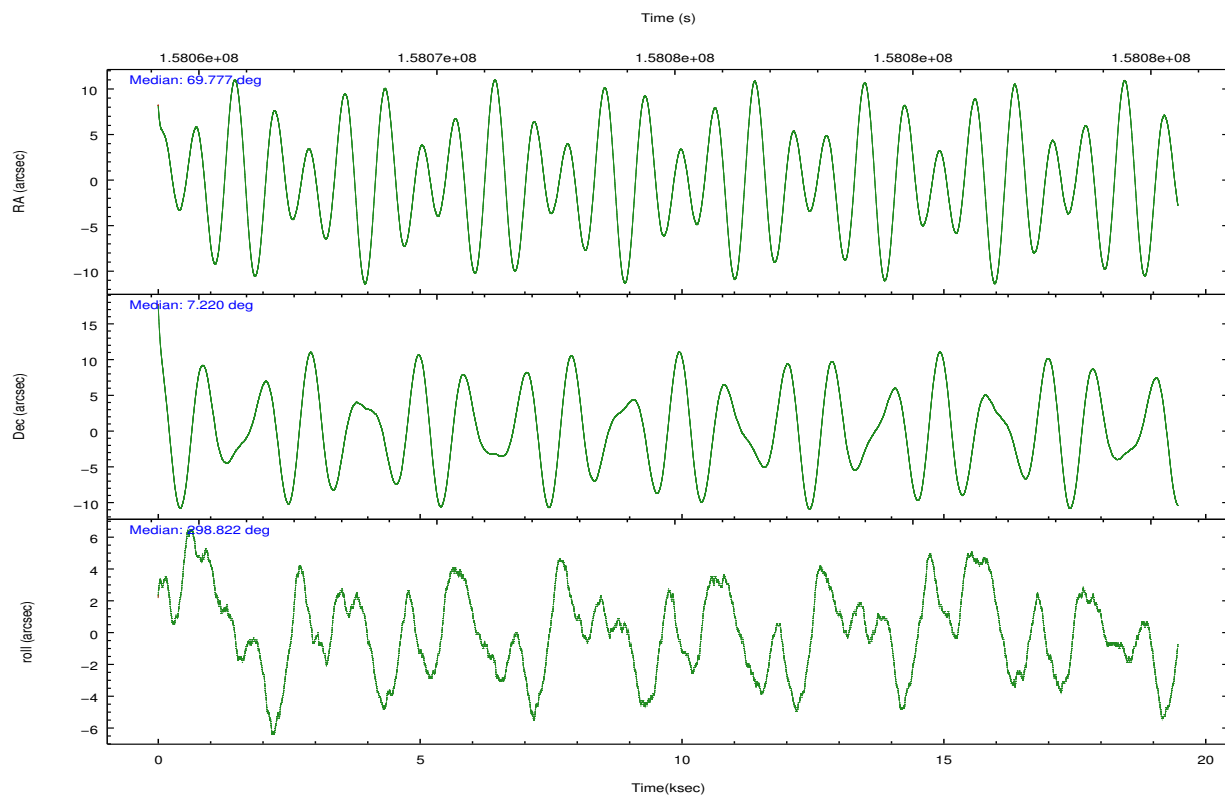
	ccd 0	ccd 1	ccd 2	ccd 3	ccd 6
grade 0 events	3774	4437	3791	14357	4040
	3%	4%	3%	12%	3%
grade 1 events	49	52	65	75	48
	0%	0%	0%	0%	0%
grade 2 events	2223	2479	2253	3271	2210
	2%	2%	2%	2%	2%
grade 3 events	1189	1348	1172	1586	1229
	1%	1%	1%	1%	1%
grade 4 events	1145	1245	1169	1524	1112
	1%	1%	1%	1%	1%
grade 5 events	3538	3807	3363	3983	3955
	3%	3%	3%	3%	3%
grade 6 events	1969	2224	1835	2203	2168
	2%	2%	1%	1%	2%
grade 7 events	82861	83215	94285	90716	89943
	85%	84%	87%	77%	85%

2.2 Compared Parameters

Parameter	Planned	Actual	Parameter	Planned	Actual
Instrument	ACIS	ACIS	Obspar format version number	7	7
Detector	ACIS-01236	ACIS-01236	Obspar file type	PREDICTED	ACTUAL
Grating	NONE	NONE	Obspar update status	NONE	UPDATED
Data mode	VFAINT	VFAINT	Number of optional ACIS chips dropped	0	0
Observation mode	POINTING	POINTING	On-chip summing requested	N	N
[deg] Pointing RA	69.753031	69.77672656797969	Subarray requested	NONE	NONE
[deg] Pointing Dec	7.233914	7.219845381618271	Alternating exposures requested	N	N
[deg] Pointing Roll	298.624694	298.8303964694489	[s] Primary exposure time	0.000000	3.1
[mm] SIM focus pos	-0.782348	-0.7809083437167272			
[mm] SIM defocus	0	0.001439871863259334			
[mm] SIM translation stage pos	-225.840463	-225.8433433320239			
[mm] SIM translation stage offset	-7.752	-7.749109670905796			
[s] Observation start time (MET)	158065300.184000	158064251.82973			
Observation start date	2003-01-04T11:00:36	2003-01-04T10:44:11			
[s] Observation end time (MET)	158084590.184000	158084904.0431			
Observation end date	2003-01-04T16:22:06	2003-01-04T16:28:24			
Read mode	TIMED	TIMED			

2.3 Aspect



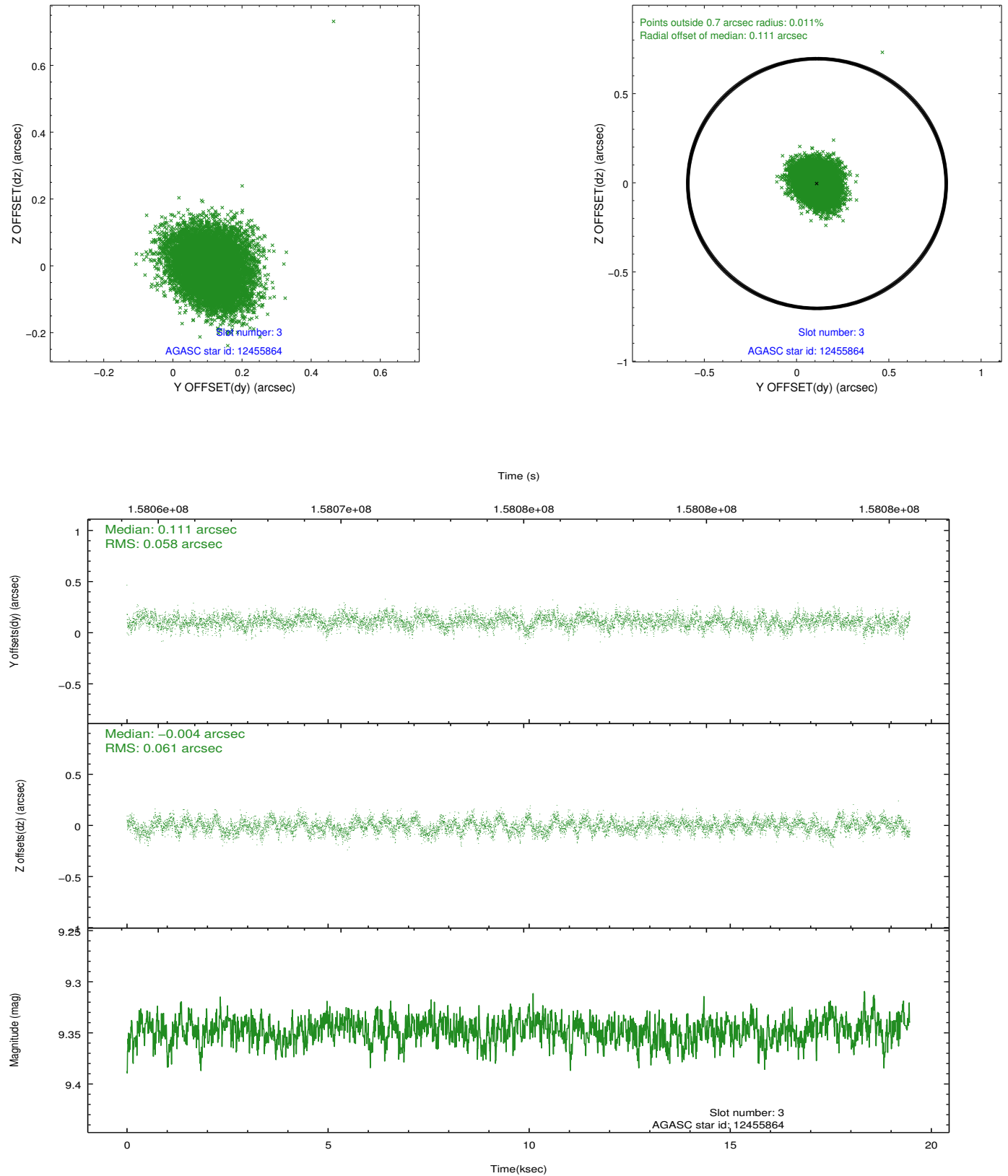


Slot Statistics

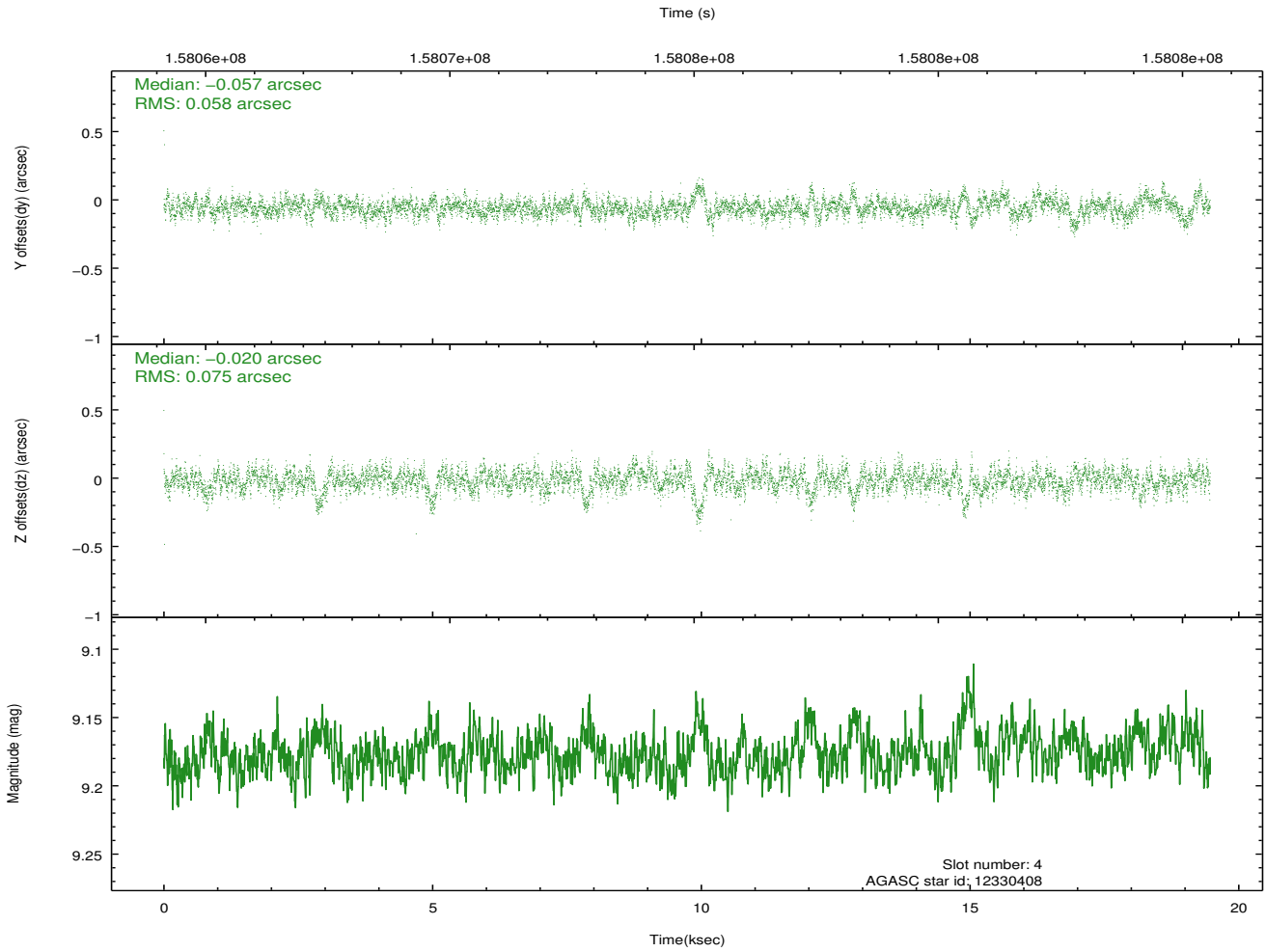
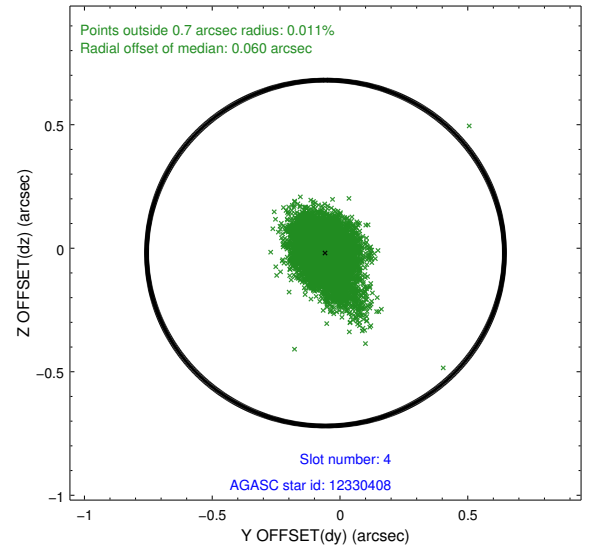
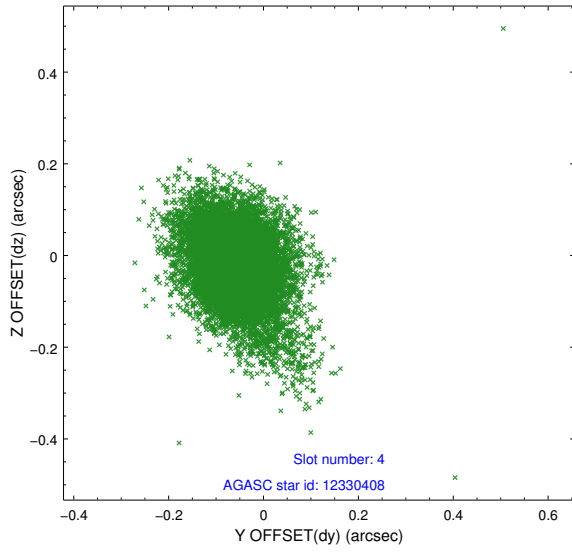
slot	status	id	mag	n_pts	med_dy	med_dz	dr1	dr2	ra	dec	mean_y	mean_z
0	FID	ACIS-I-1	7.23	4750	0.105	-0.066	0.007	0.012	0.000000	0.000000	939.05	-989.06
1	FID	ACIS-I-5	7.22	4749	-0.218	0.103	0.007	0.014	0.000000	0.000000	-1809.23	908.52
2	FID	ACIS-I-6	7.26	4750	0.022	0.033	0.007	0.013	0.000000	0.000000	404.35	1553.14
3	GUIDE	12455864	9.35	9491	0.111	-0.004	0.090	0.144	69.547712	6.609739	1621.04	-1720.40
4	GUIDE	12330408	9.18	9498	-0.057	-0.020	0.095	0.170	69.191517	6.828920	317.75	-2459.57
5	GUIDE	12451872	9.61	9495	0.040	-0.024	0.094	0.155	70.002213	7.321573	149.05	932.32
6	GUIDE	89400416	9.18	9498	-0.036	0.012	0.095	0.157	69.717208	7.929078	-2257.70	1086.90
7	GUIDE	89403544	7.90	9498	-0.061	0.038	0.077	0.114	69.809992	7.987097	-2283.25	1477.39

2.4 Star Slots

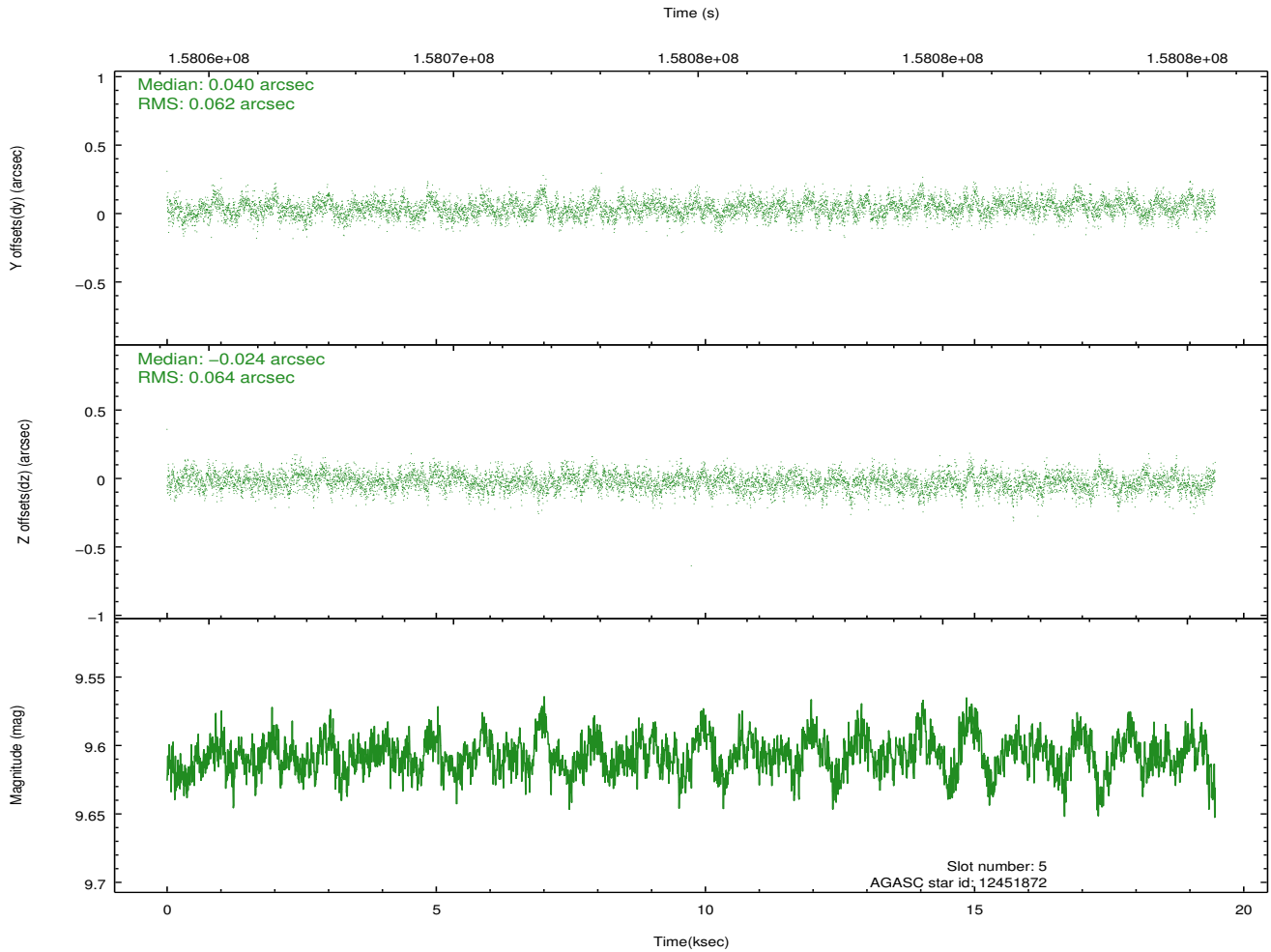
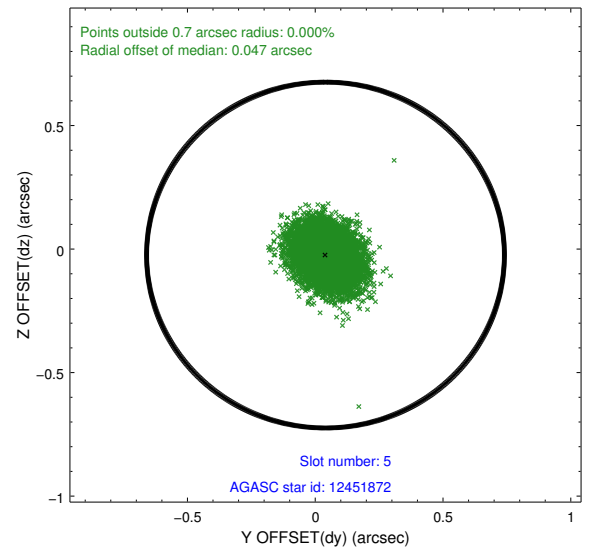
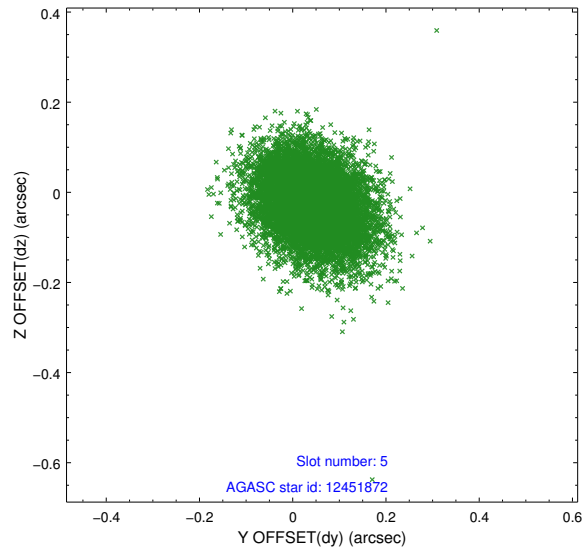
2.4.1 Slot 3



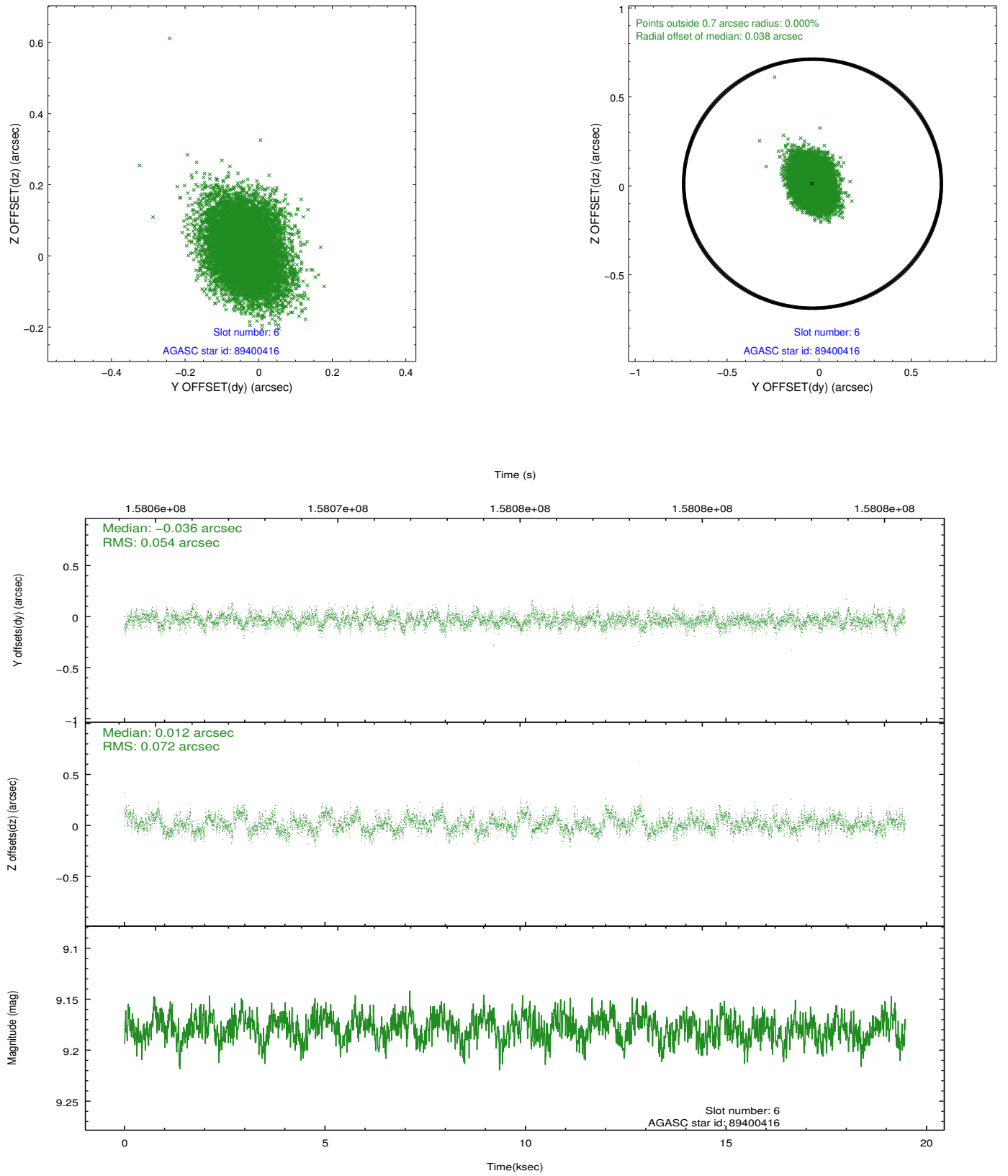
2.4.2 Slot 4



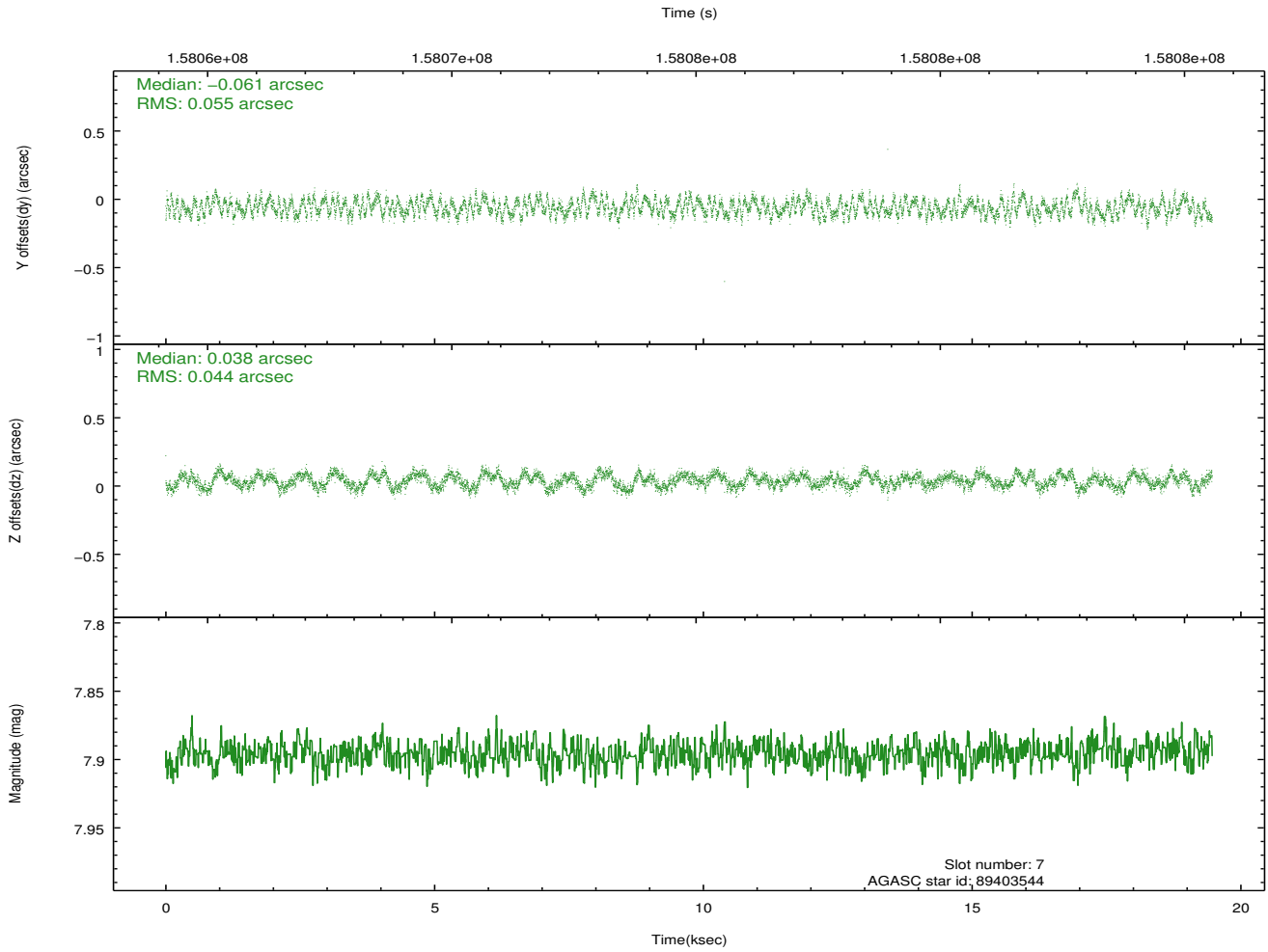
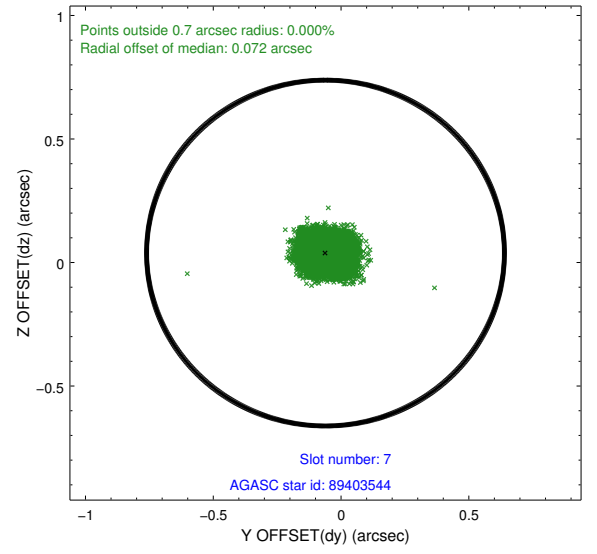
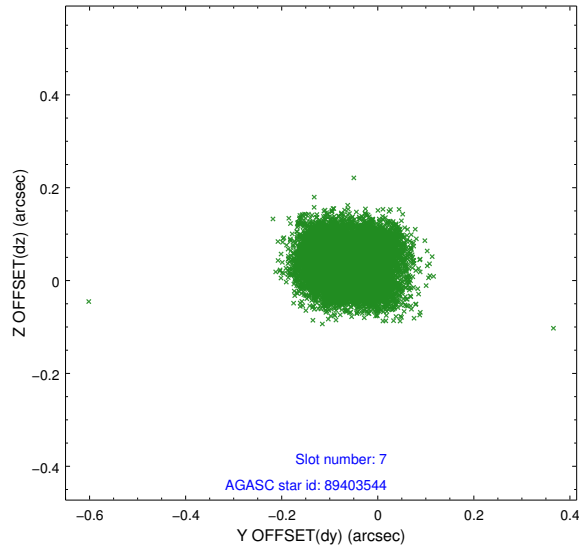
2.4.3 Slot 5



2.4.4 Slot 6

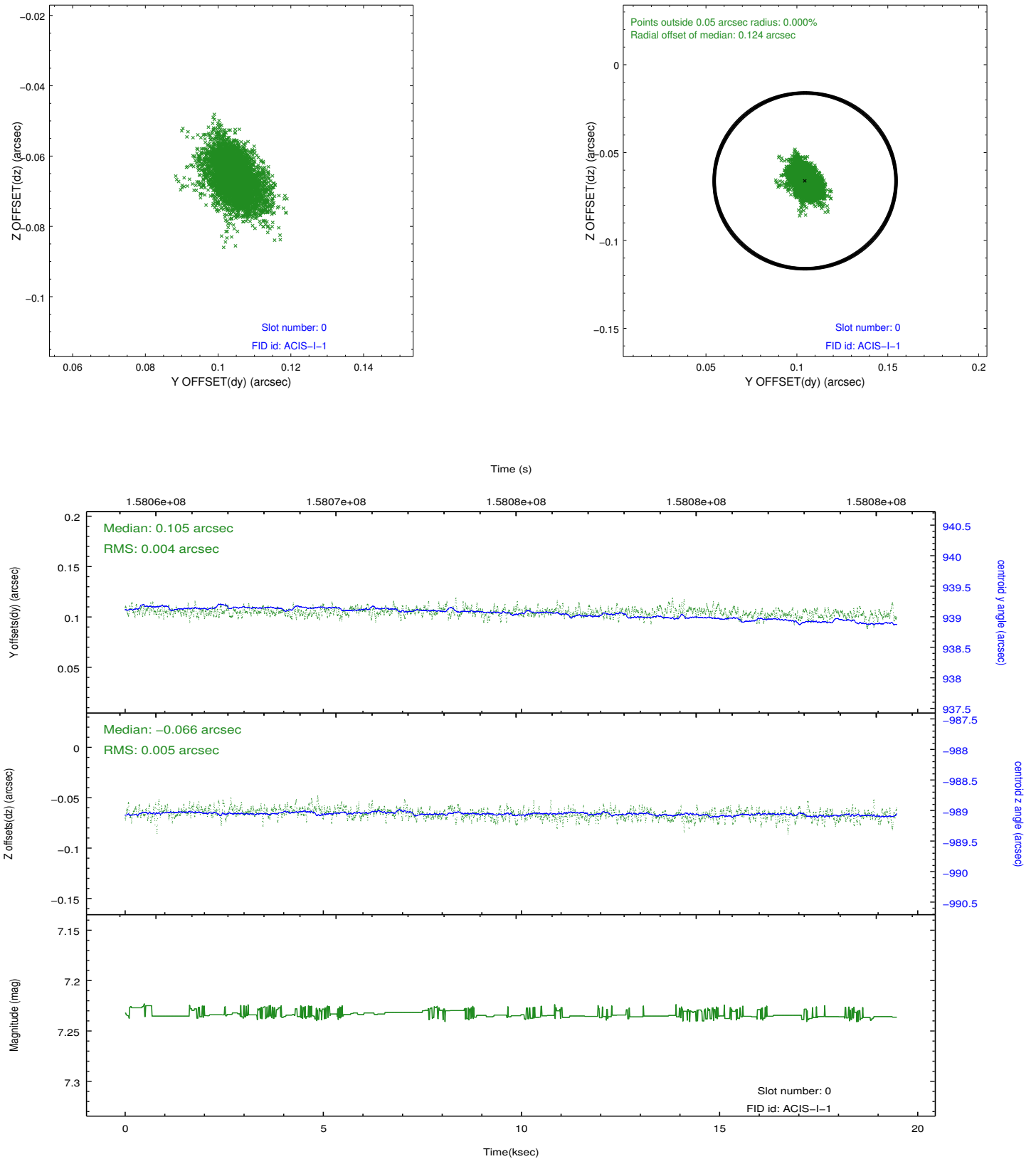


2.4.5 Slot 7

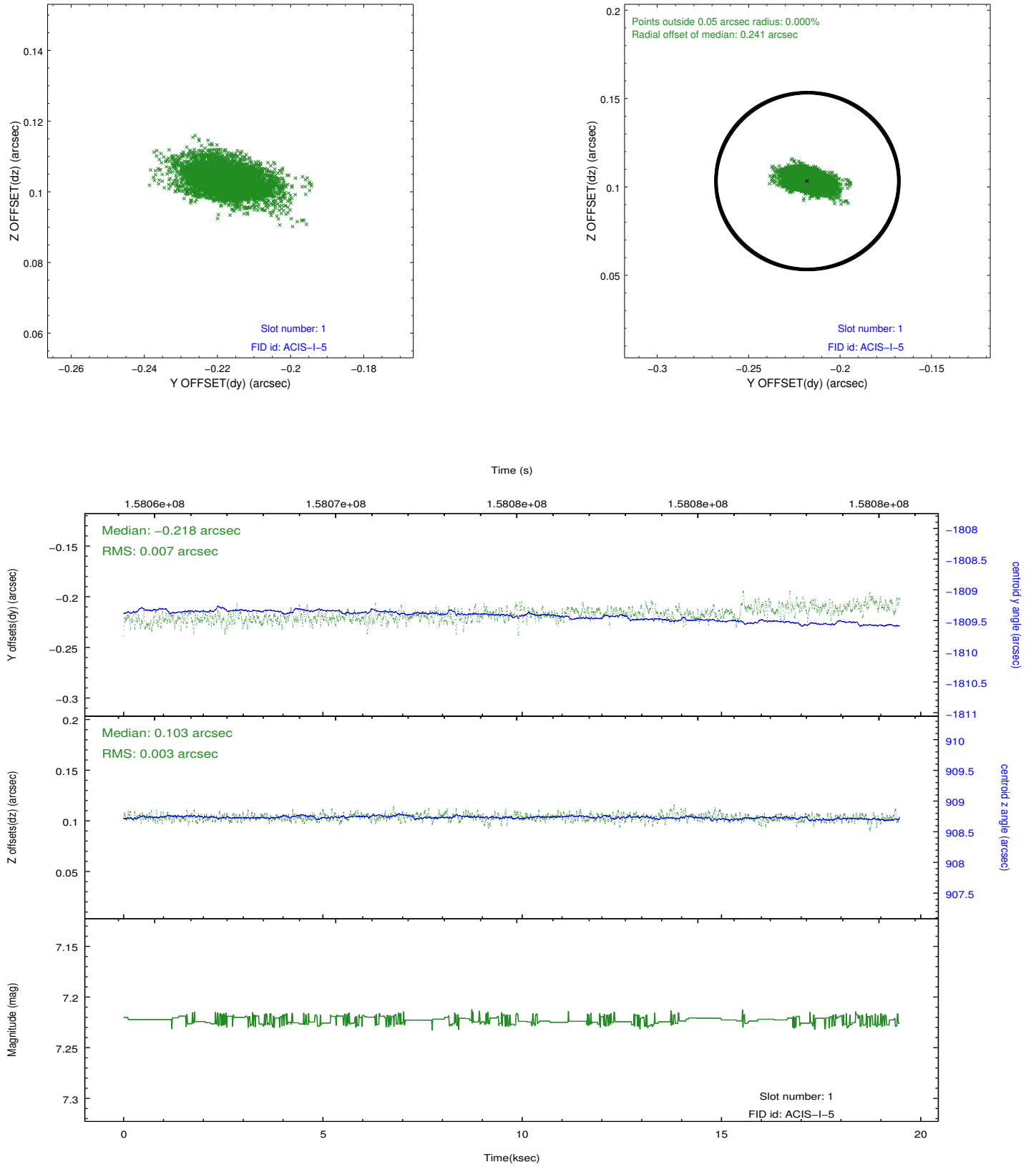


2.5 FID Slots

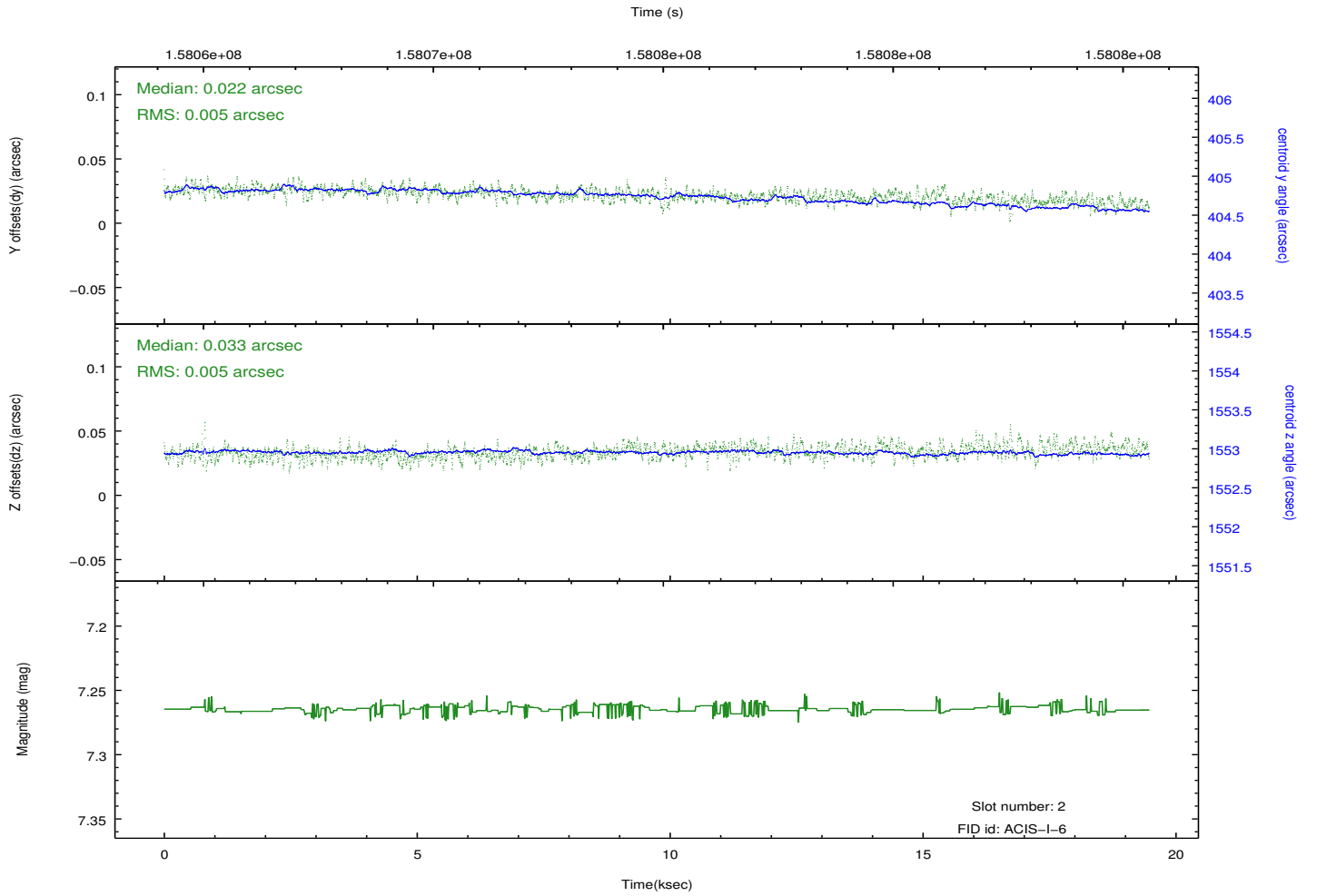
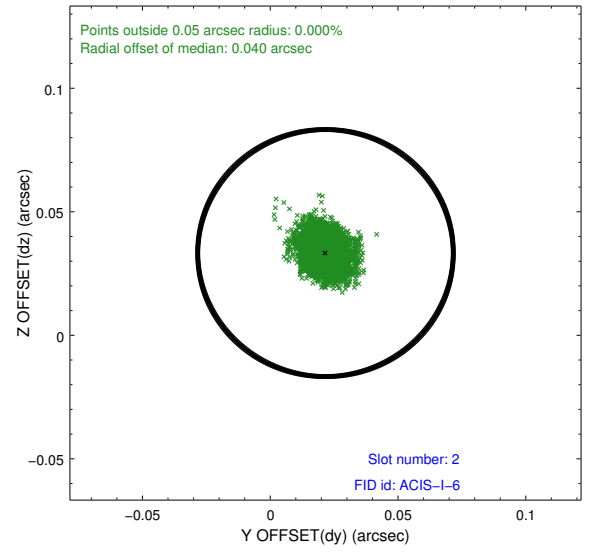
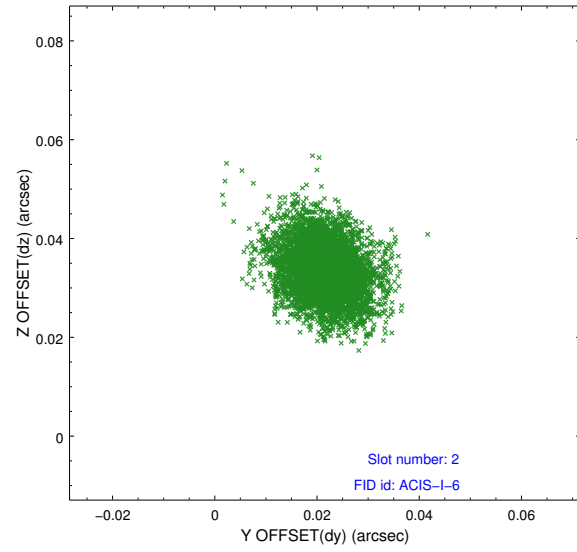
2.5.1 Slot 0



2.5.2 Slot 1



2.5.3 Slot 2



A Summary

A.1 Status

V&V Scientist	Jen Lauer
V&V Date (YYYY-MM-DD)	2012.11.01
V&V Edition	1
V&V Disposition and Status	OK
V&V Charge Time	19.468

A.2 Comments