

V&V Reference Report

L2 ASCDS Version : 8.4.5

Observation 3563 - L2 Version 3
Chandra X-Ray Center

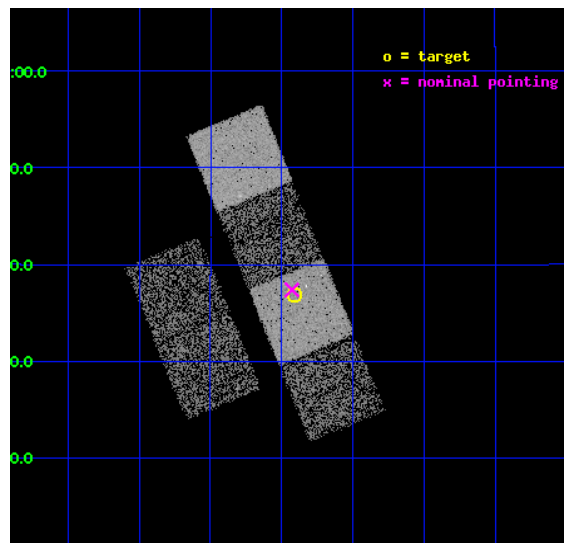
L2 Processing Date : Oct 19 2012

Contents

1	Front	2
2	OBI	3
2.1	OBI	3
2.1.1	Images	3
2.1.2	Bias	3
2.1.3	Parameters	4
2.1.4	Events	4
2.2	Compared Parameters	5
2.3	Aspect	6
2.4	Star Slots	9
2.4.1	Slot 3	9
2.4.2	Slot 4	10
2.4.3	Slot 5	11
2.4.4	Slot 6	12
2.5	FID Slots	13
2.5.1	Slot 0	13
2.5.2	Slot 1	14
2.5.3	Slot 2	15
A	Summary	16
A.1	Status	16
A.2	Comments	16

1 Front

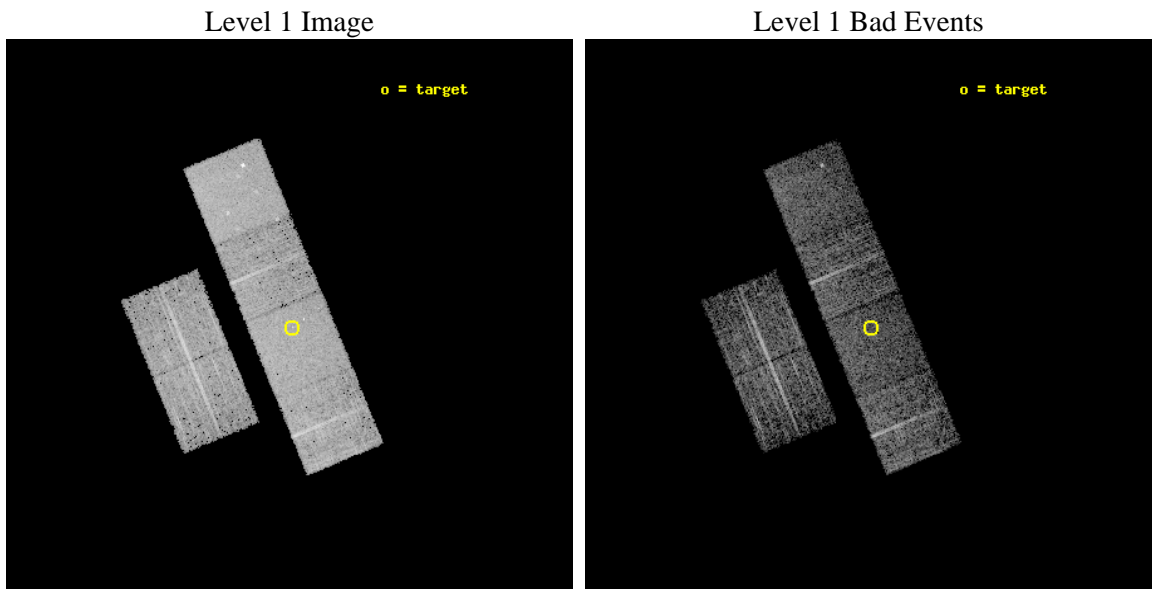
seq_num	700625	Sequence number
obs_id	3563	Observation id
title	A CHANDRA SURVEY OF LUMINOUS, RADIO-DETECTED QUASARS AT $Z > 4$	Prop
observer	Professor Gordon Garmire	Principal investigator
object	J 091824+063653	Source name
dtcycle	0	
cycle	P	events from which exps? Prim/Second/Both
ra_targ	139.601667	Observer's specified target RA [deg]
dec_targ	6.614833	Observer's specified target Dec [deg]
ra_nom	139.6069657336	Nominal RA [deg]
dec_nom	6.62307787364	Nominal Dec [deg]
roll_nom	67.692981007121	Nominal Roll [deg]
revision	3	Processing version of data
ontime	4959.9999815226	Sum of GTIs [s]
livetime	4897.1934752031	Livetime [s]
ontime2	4959.9999815226	Sum of GTIs [s]
ontime3	4959.9999815226	Sum of GTIs [s]
ontime5	4959.9999815226	Sum of GTIs [s]
ontime6	4959.9999815226	Sum of GTIs [s]
ontime7	4959.9999815226	Sum of GTIs [s]
ontime8	4959.9999815226	Sum of GTIs [s]
l2events	47989	Number of level 2 events



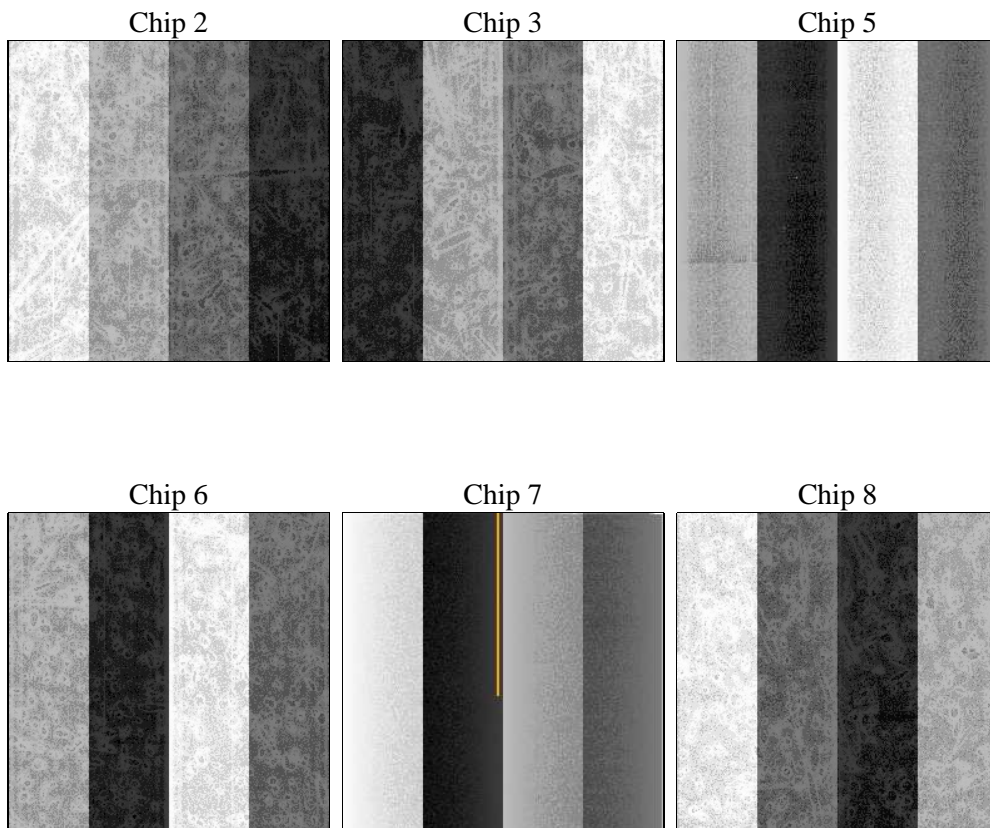
2 OBI

2.1 OBI

2.1.1 Images



2.1.2 Bias



2.1.3 Parameters

obi_num	0	Obi number	sched_exp_time	5000.000000	[s] Scheduled observation exposure time
ascdsver	8.4.5	Processing system revision	ontime	4959.9999815226	Sum of GTIs [s]
caldsver	4.5.2	 	ontime2	4959.9999815226	Sum of GTIs [s]
date	2012-10-19T04:54:48	Date and time of file creation	ontime3	4959.9999815226	Sum of GTIs [s]
revision	3	Processing version of data	ontime5	4959.9999815226	Sum of GTIs [s]
			ontime6	4959.9999815226	Sum of GTIs [s]
			ontime7	4959.9999815226	Sum of GTIs [s]
			ontime8	4959.9999815226	Sum of GTIs [s]
			l1events	218639	Number of level 1 events

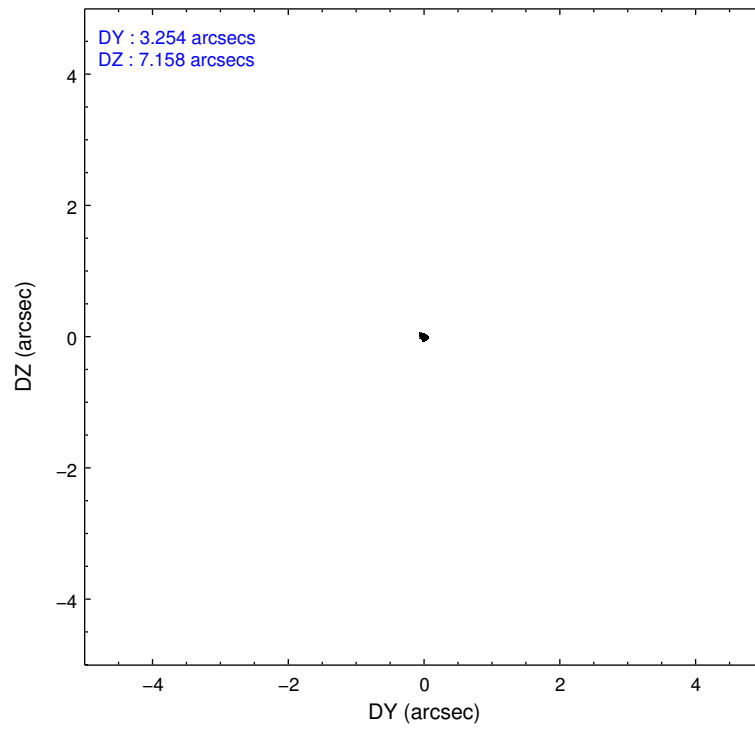
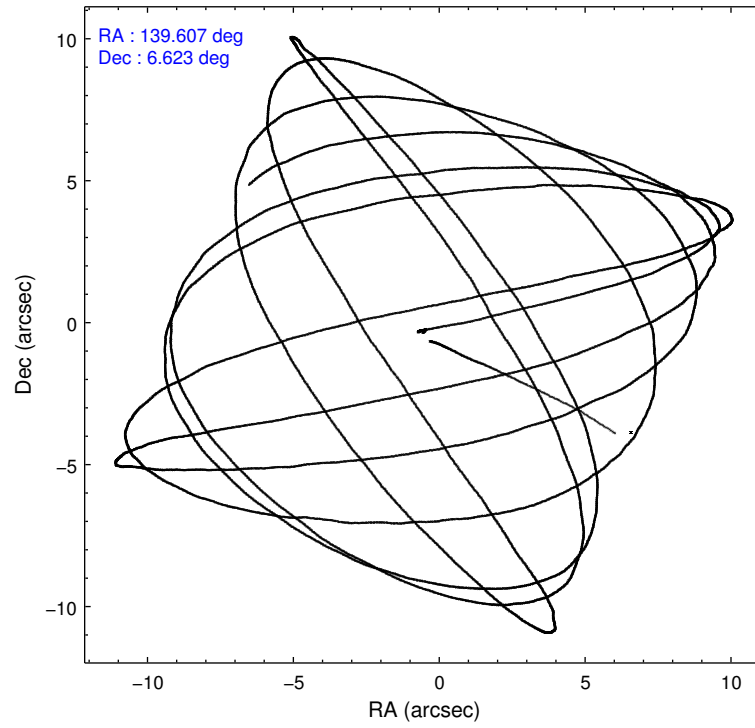
2.1.4 Events

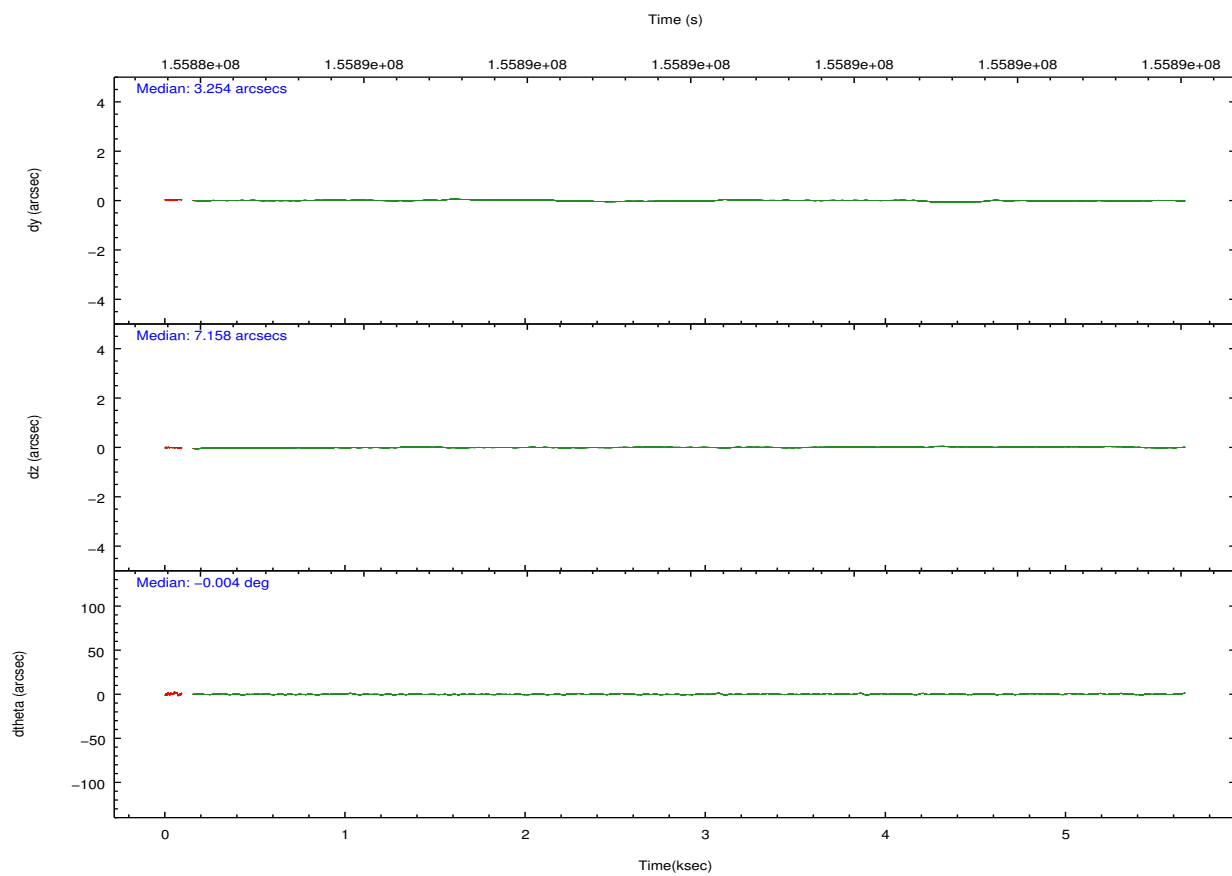
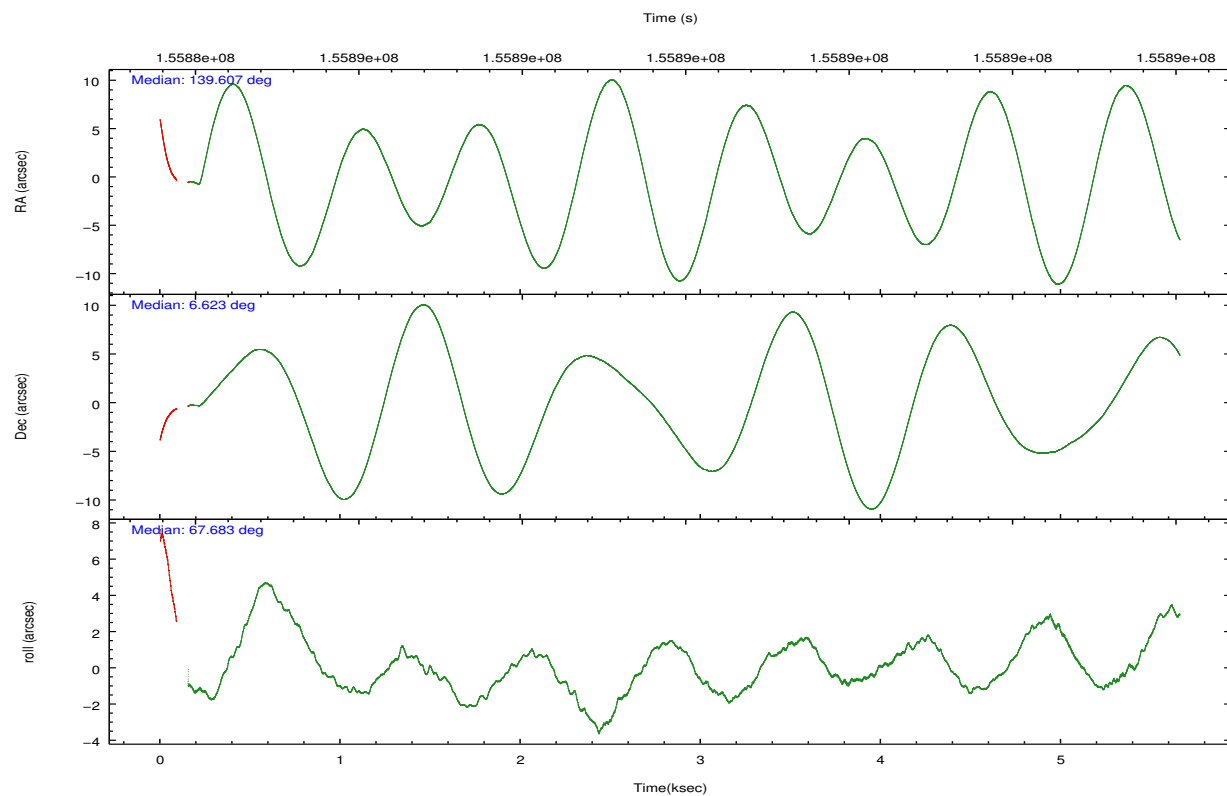
	ccd 2	ccd 3	ccd 5	ccd 6	ccd 7	ccd 8		ccd 2	ccd 3	ccd 5	ccd 6	ccd 7	ccd 8
level 1 events	31726	30853	45023	31619	40477	38941	grade 0 events	1484	1505	2203	1454	1590	2537
rejected events	28221	27390	24519	28009	23595	30927		4%	4%	4%	4%	3%	6%
rejected %	88%	88%	54%	88%	58%	79%	grade 1 events	18	15	230	12	38	20
								0%	0%	0%	0%	0%	0%
							grade 2 events	721	643	6185	748	3347	1659
								2%	2%	13%	2%	8%	4%
							grade 3 events	340	332	858	378	1499	896
								1%	1%	1%	1%	3%	2%
							grade 4 events	336	379	765	344	1477	801
								1%	1%	1%	1%	3%	2%
							grade 5 events	1237	1264	3237	1365	3871	1807
								3%	4%	7%	4%	9%	4%
							grade 6 events	628	617	10538	694	8992	2127
								1%	1%	23%	2%	22%	5%
							grade 7 events	26962	26098	21007	26624	19663	29094
								84%	84%	46%	84%	48%	74%

2.2 Compared Parameters

Parameter	Planned	Actual	Parameter	Planned	Actual
Instrument	ACIS	ACIS	Obspar format version number	7	7
Detector	ACIS-235678	ACIS-235678	Obspar file type	PREDICTED	ACTUAL
Grating	NONE	NONE	Obspar update status	NONE	UPDATED
Data mode	FAINT	FAINT	Number of optional ACIS chips dropped	0	0
Observation mode	POINTING	POINTING	On-chip summing requested	N	N
[deg] Pointing RA	139.610923	139.6069657336007	Subarray requested	NONE	NONE
[deg] Pointing Dec	6.596061	6.623077873640042	Alternating exposures requested	N	N
[deg] Pointing Roll	67.535872	67.69298100712143	[s] Primary exposure time	0.000000	3.2
[mm] SIM focus pos	-0.684267	-0.6828225247311905			
[mm] SIM defocus	0	0.001444936568705701			
[mm] SIM translation stage pos	-190.132523	-190.1425803651734			
[mm] SIM translation stage offset	0	0.01005778216563158			
[s] Observation start time (MET)	155885736.184000	155884535.42622			
Observation start date	2002-12-10T05:34:32	2002-12-10T05:15:35			
[s] Observation end time (MET)	155890736.184000	155891493.63901			
Observation end date	2002-12-10T06:57:52	2002-12-10T07:11:33			
Read mode	TIMED	TIMED			

2.3 Aspect



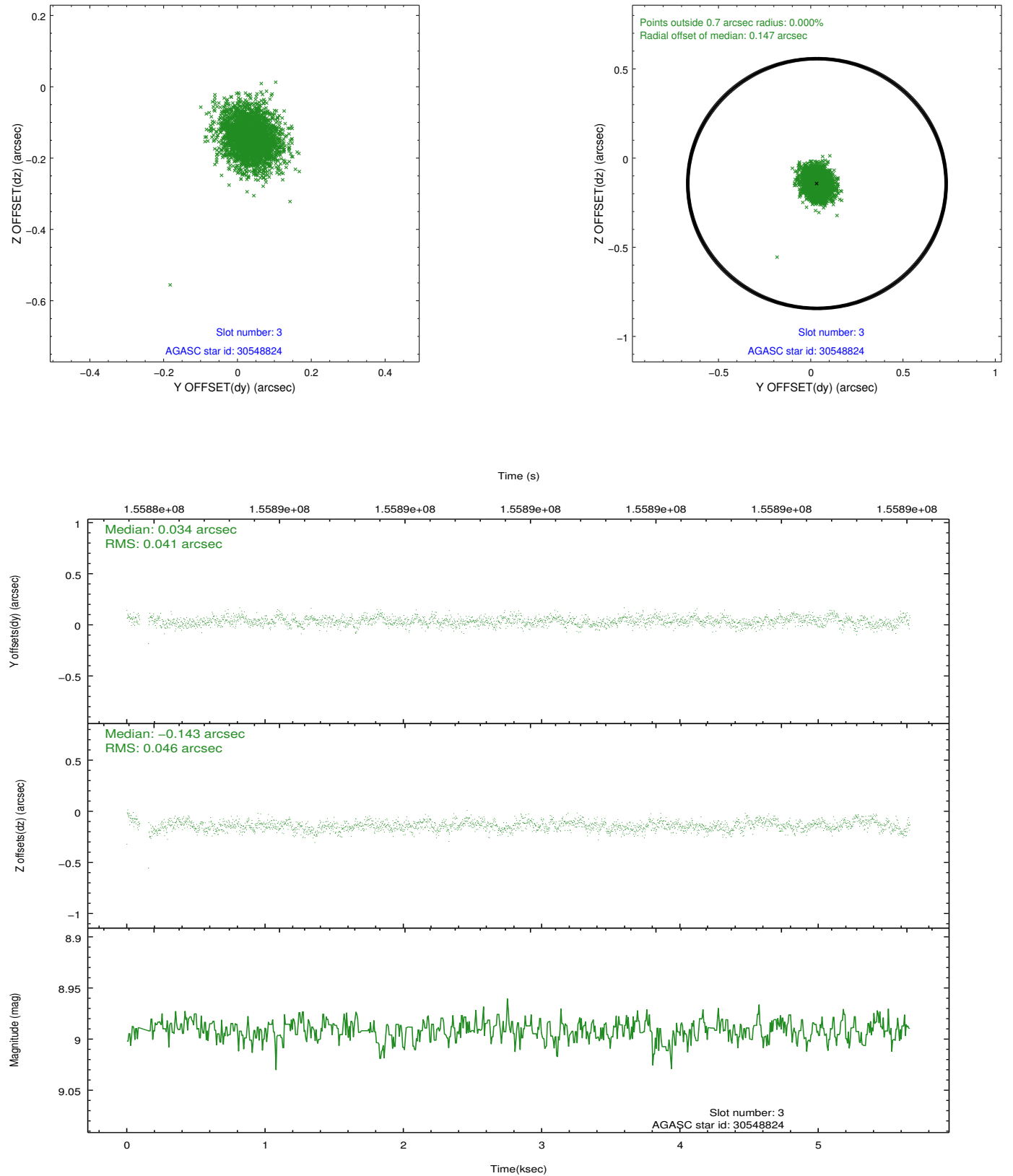


Slot Statistics

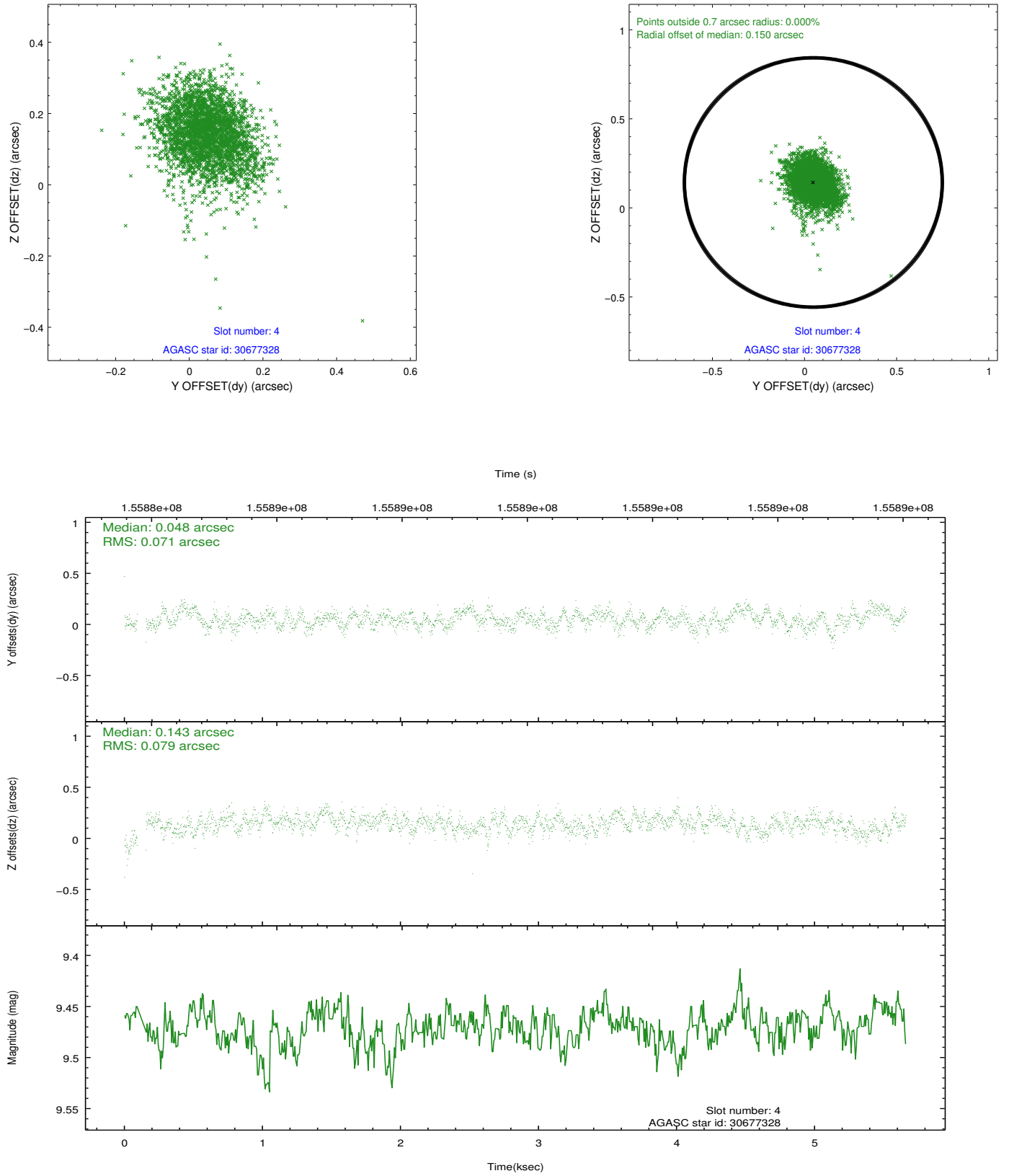
	status	id	mag	n_pts	med_dy	med_dz	drl
	FID	ACIS-S-2	7.12	1366	-0.023	-0.006	0.007
	FID	ACIS-S-4	7.20	1366	0.016	0.013	0.006
	FID	ACIS-S-5	7.24	1367	-0.024	0.002	0.007
	GUIDE	30548824	8.99	2733	0.034	-0.143	0.065
	GUIDE	30677328	9.47	2731	0.048	0.143	0.109
	GUIDE	30542632	8.41	2733	-0.023	-0.267	0.059
	GUIDE	30683936	8.47	2733	-0.060	0.270	0.070
0.0000.0000.0000.0000000.00000000.000.00							

2.4 Star Slots

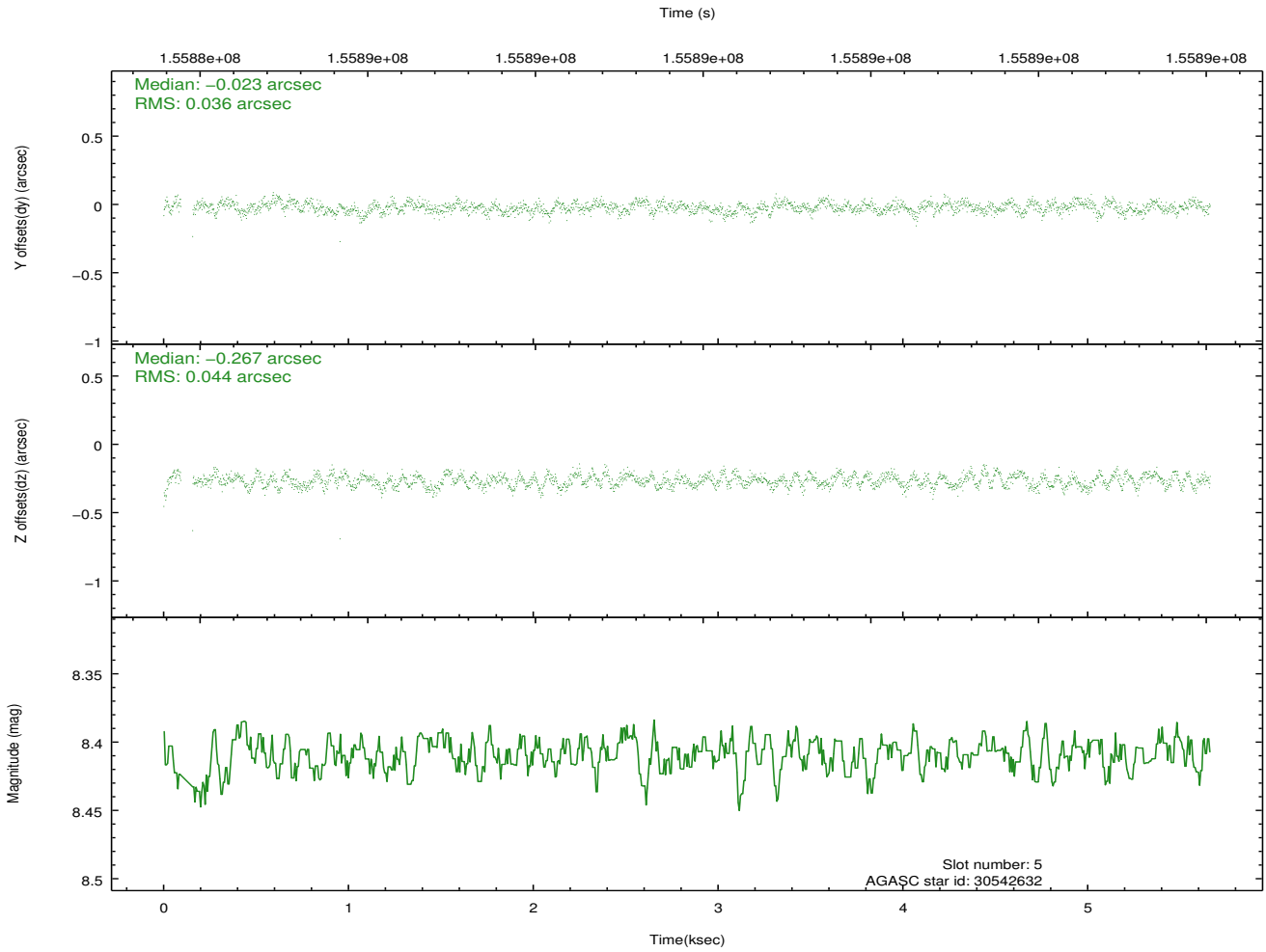
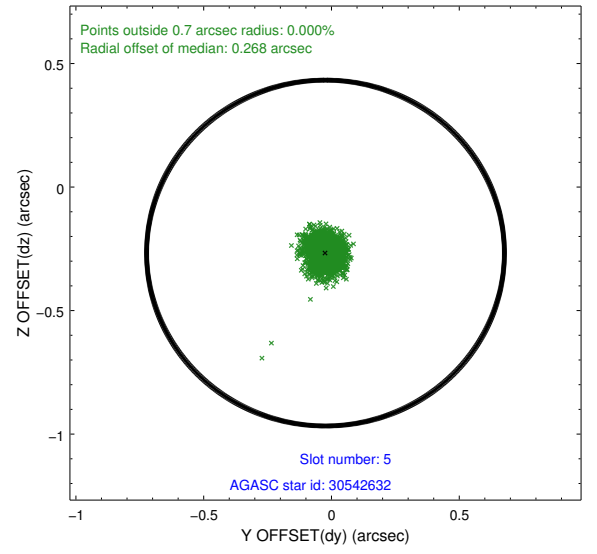
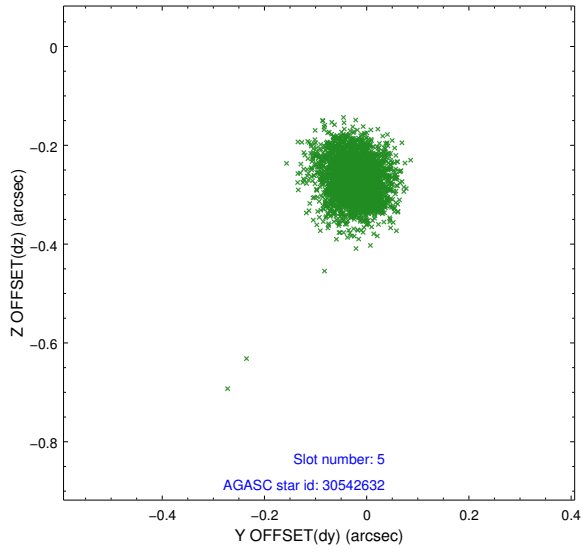
2.4.1 Slot 3



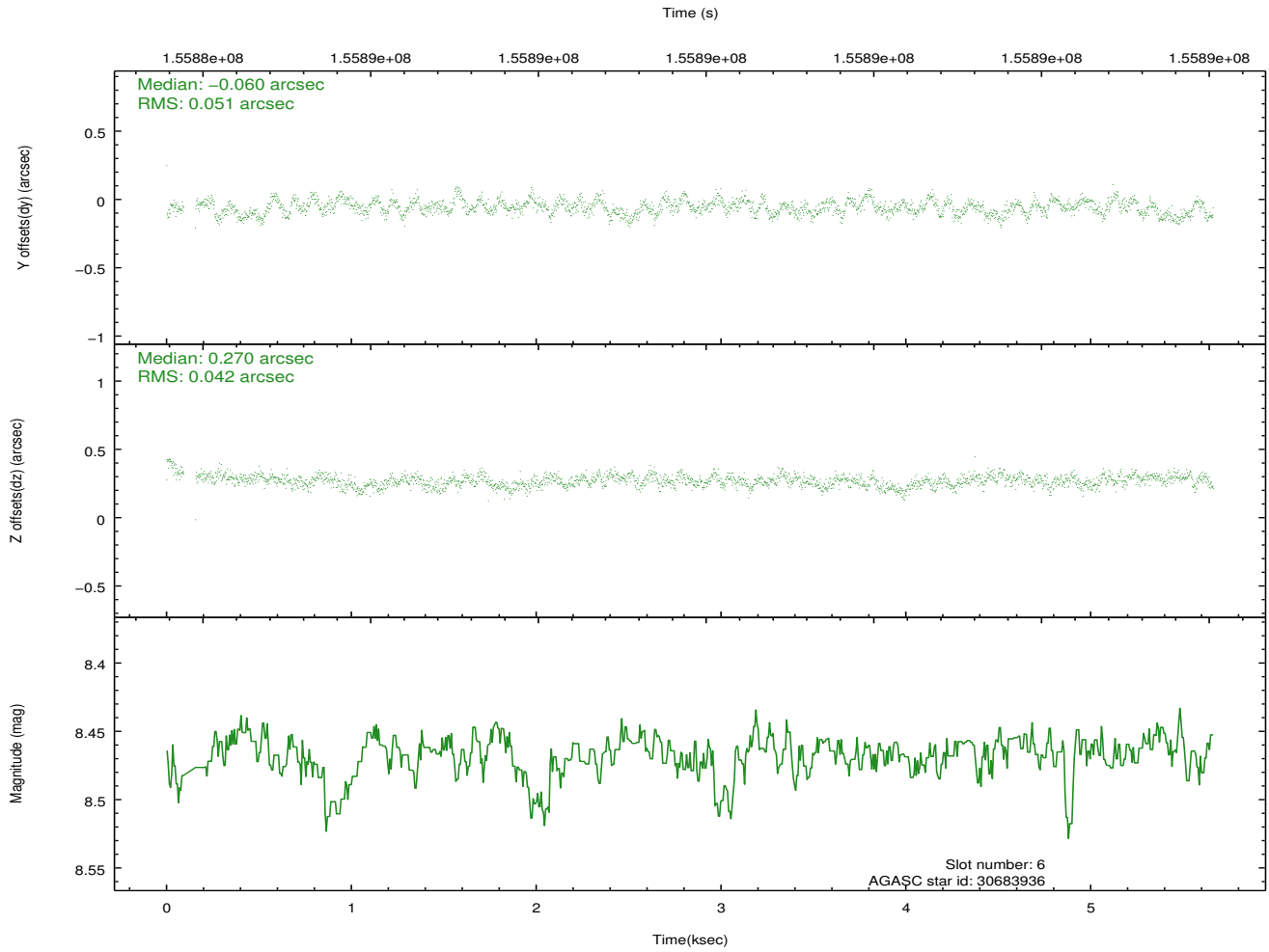
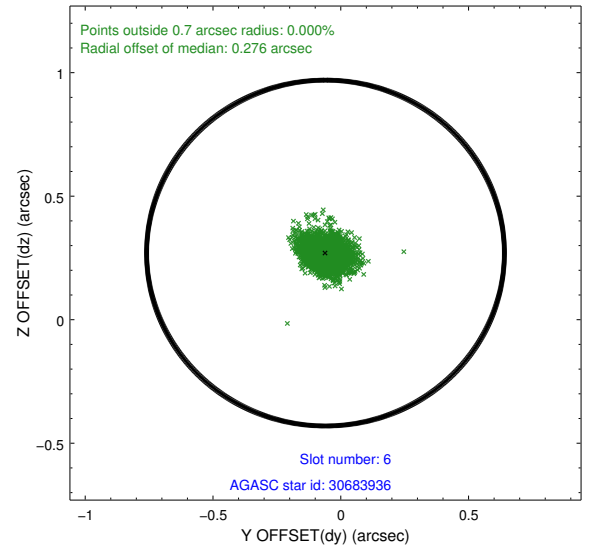
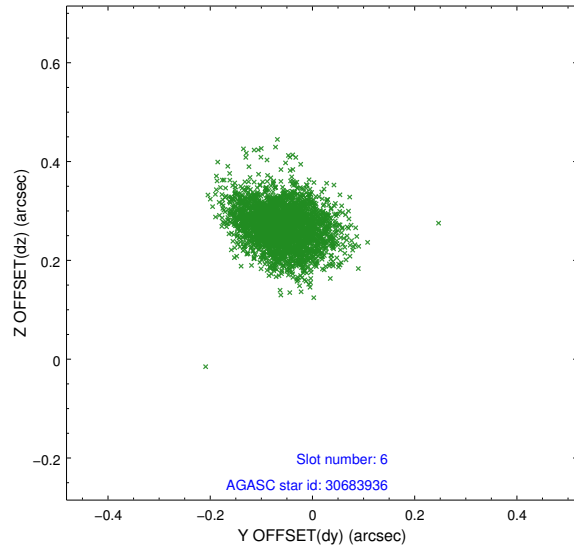
2.4.2 Slot 4



2.4.3 Slot 5

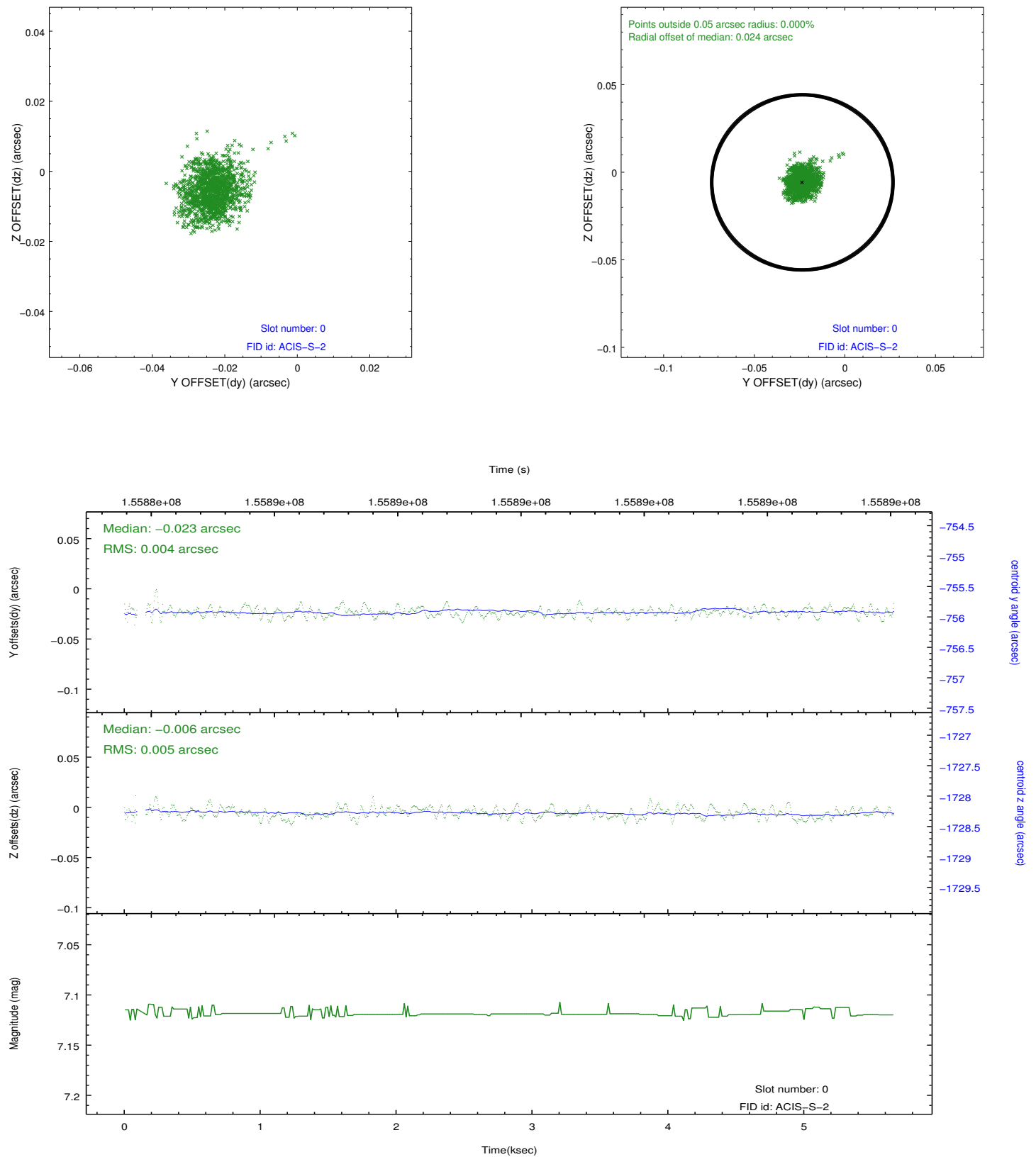


2.4.4 Slot 6

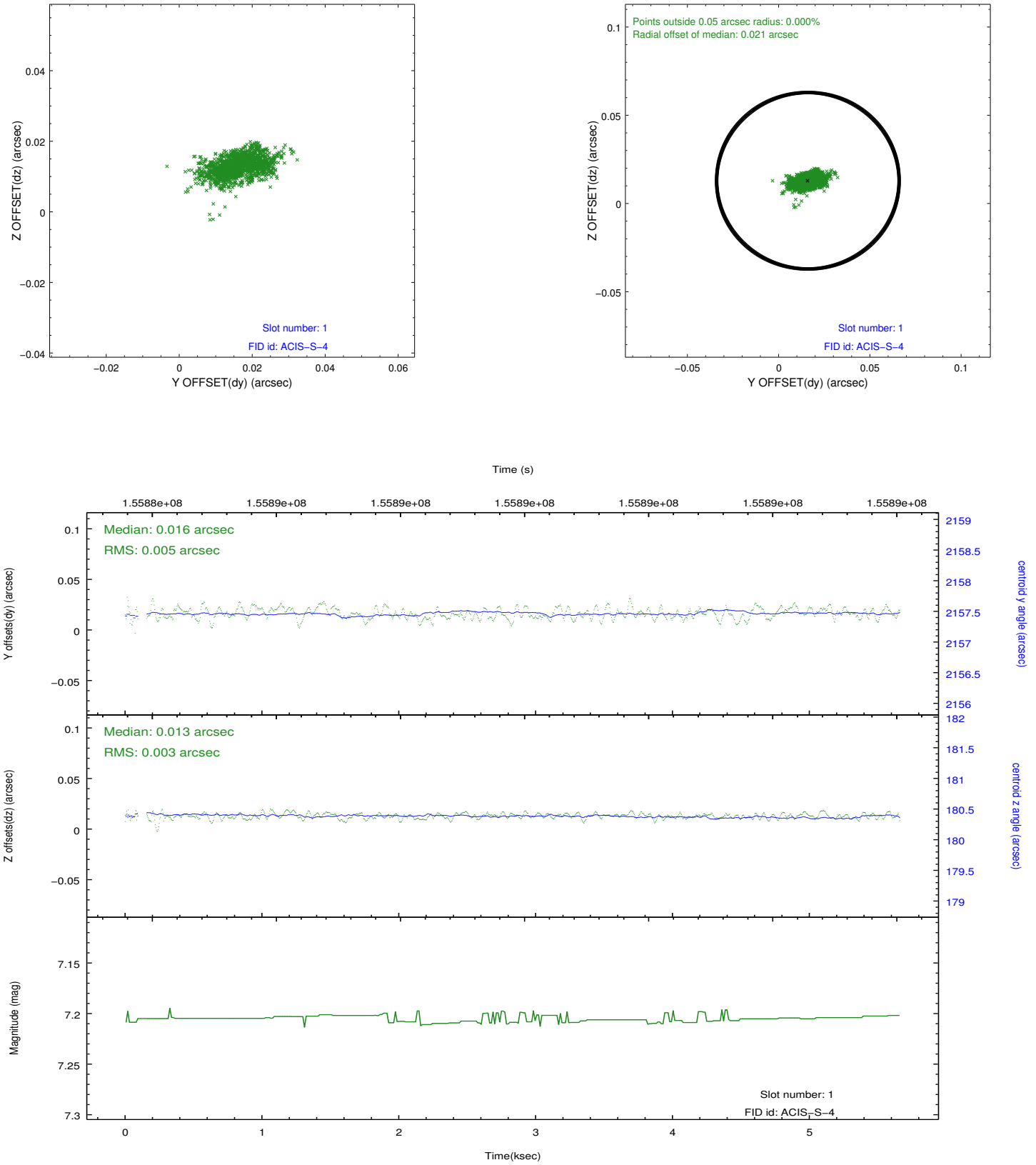


2.5 FID Slots

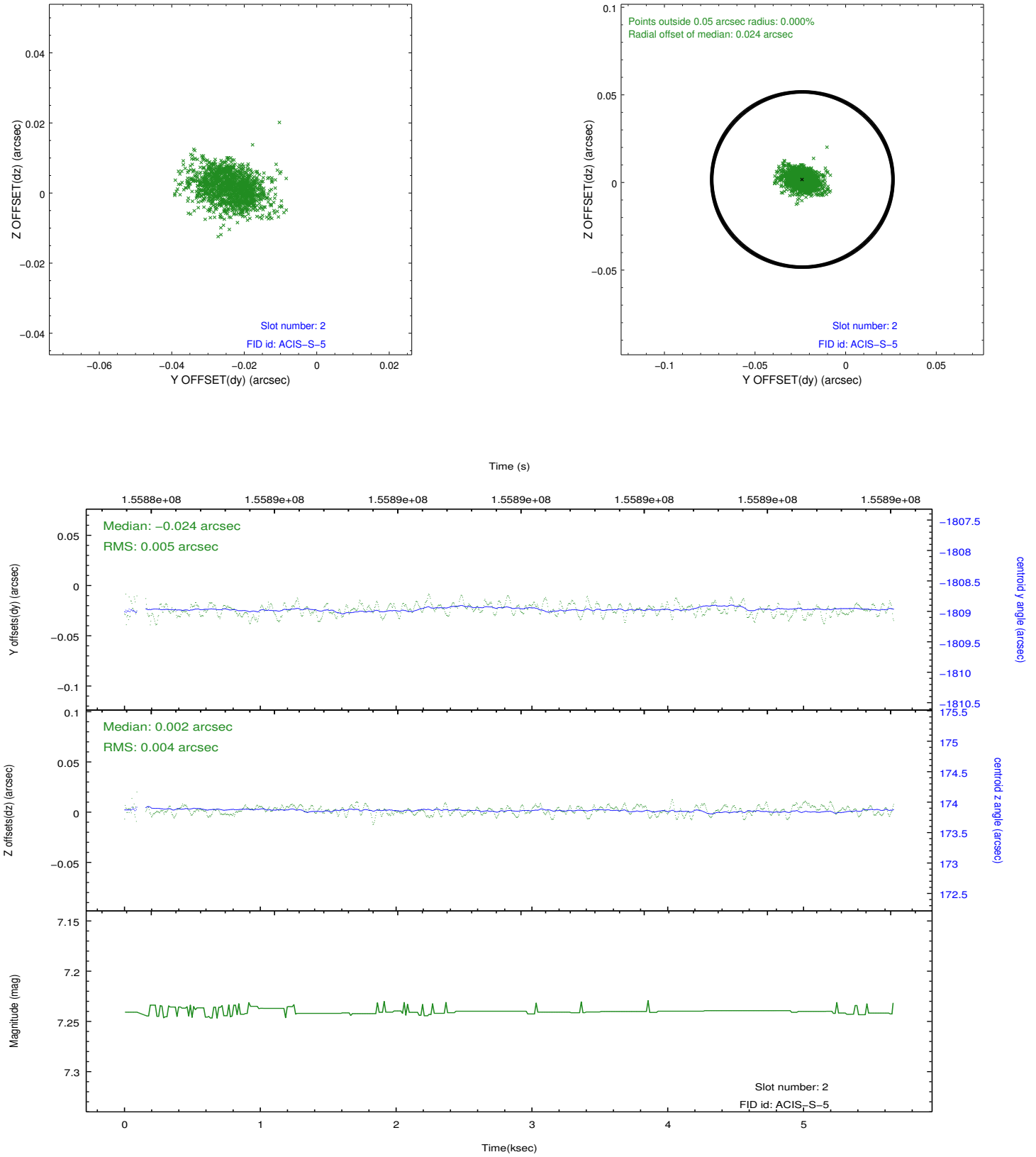
2.5.1 Slot 0



2.5.2 Slot 1



2.5.3 Slot 2



A Summary

A.1 Status

V&V Scientist	Jen Lauer
V&V Date (YYYY-MM-DD)	2012.10.30
V&V Edition	1
V&V Disposition and Status	OK
V&V Charge Time	4.963

A.2 Comments