

V&V Reference Report

L2 ASCDS Version : 7.6.9

Observation 3563 - L2 Version 001
Chandra X-Ray Center

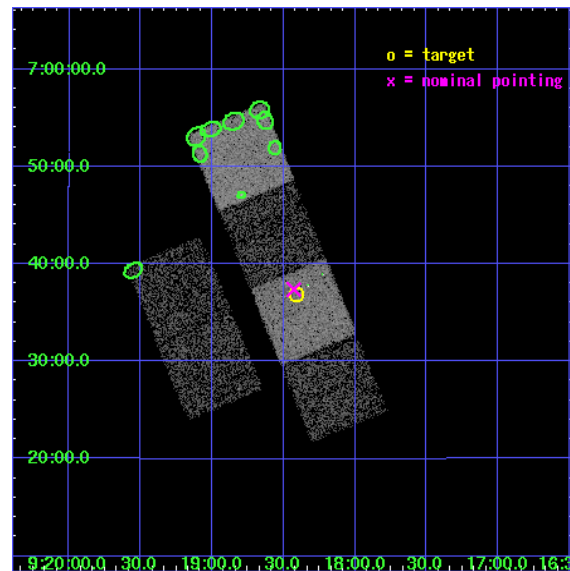
L2 Processing Date : Oct 14 2006

Contents

1	Front	2
2	OBI	3
2.1	OBI	3
2.1.1	Images	3
2.1.2	Bias	3
2.1.3	Parameters	4
2.1.4	Events	4
2.2	Compared Parameters	5
2.3	Aspect	6
2.4	Star Slots	9
2.4.1	Slot 3	9
2.4.2	Slot 4	10
2.4.3	Slot 5	11
2.4.4	Slot 6	12
2.5	FID Slots	13
2.5.1	Slot 0	13
2.5.2	Slot 1	14
2.5.3	Slot 2	15
3	Point Sources	16
A	Summary	17
A.1	Status	17
A.2	Comments	17

1 Front

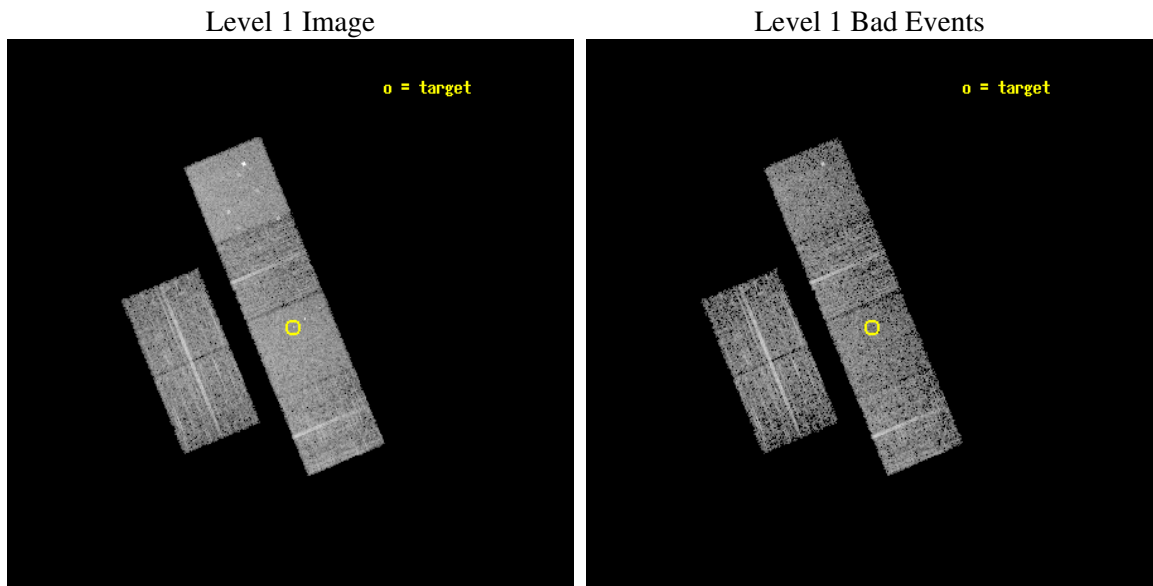
seq_num	700625
obs_id	3563
title	A CHANDRA SURVEY OF LUMINOUS, RADIO-DETECTED QUASARS AT $Z > 4$
observer	Professor Gordon Garmire
object	J 091824+063653
dtcycle	0
cycle	P
ra_targ	139.601667
dec_targ	6.614833
ra_nom	139.6069657336
dec_nom	6.62307787364
roll_nom	67.692981007121
revision	2
ontime	4959.9999815226
livetime	4897.1934752031
ontime2	4959.9999815226
ontime3	4959.9999815226
ontime5	4959.9999815226
ontime6	4959.9999815226
ontime7	4959.9999815226
ontime8	4959.9999815226
l2events	46172



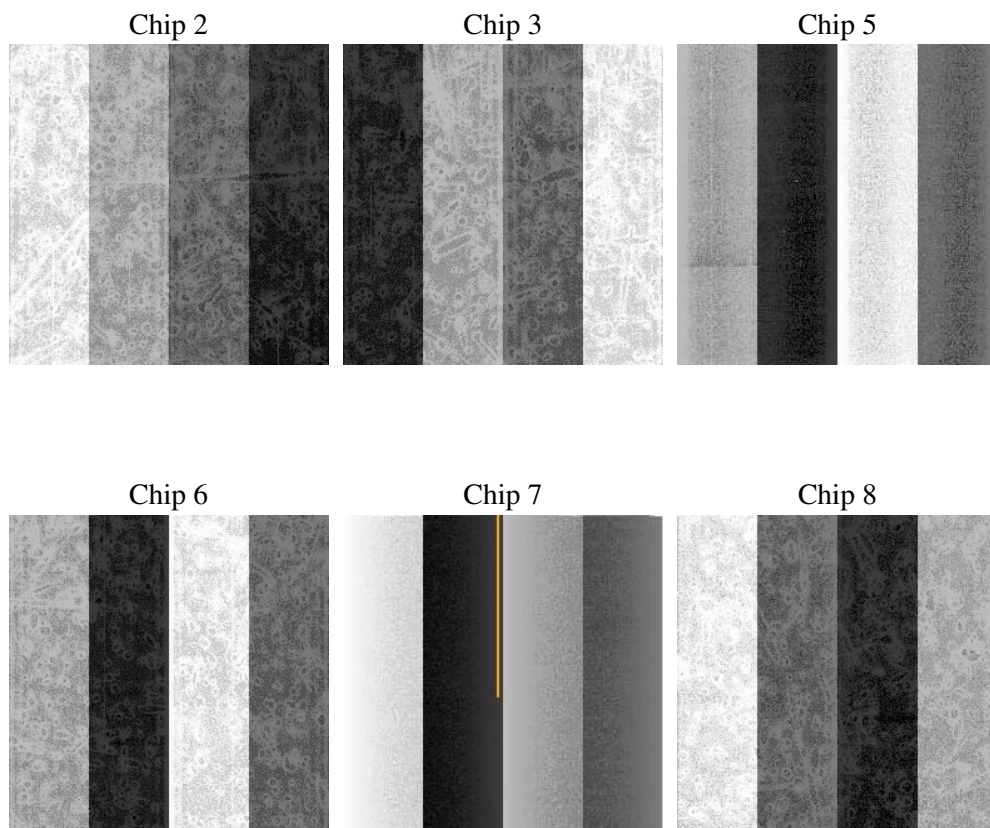
2 OBI

2.1 OBI

2.1.1 Images



2.1.2 Bias



2.1.3 Parameters

obi_num	0
ascdsver	7.6.9
caldsver	3.2.3
date	2006-10-14T21:54:22
revision	2

sched_exp_time	5000.000000
ontime	4965.2250572443
ontime2	4965.2250572443
ontime3	4968.4660773277
ontime5	4968.4660773277
ontime6	4968.4660773277
ontime7	4965.2250572443
ontime8	4968.4660773277
l1events	218639

2.1.4 Events

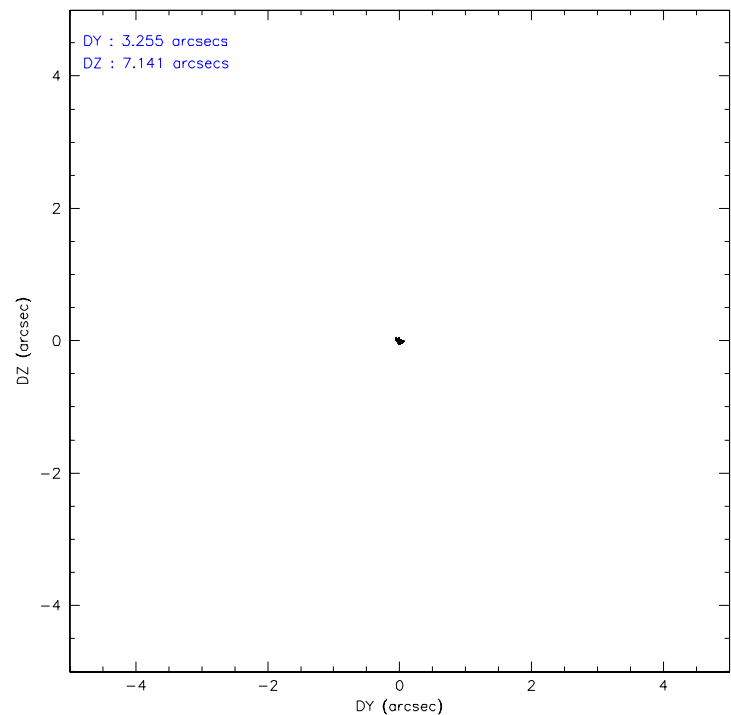
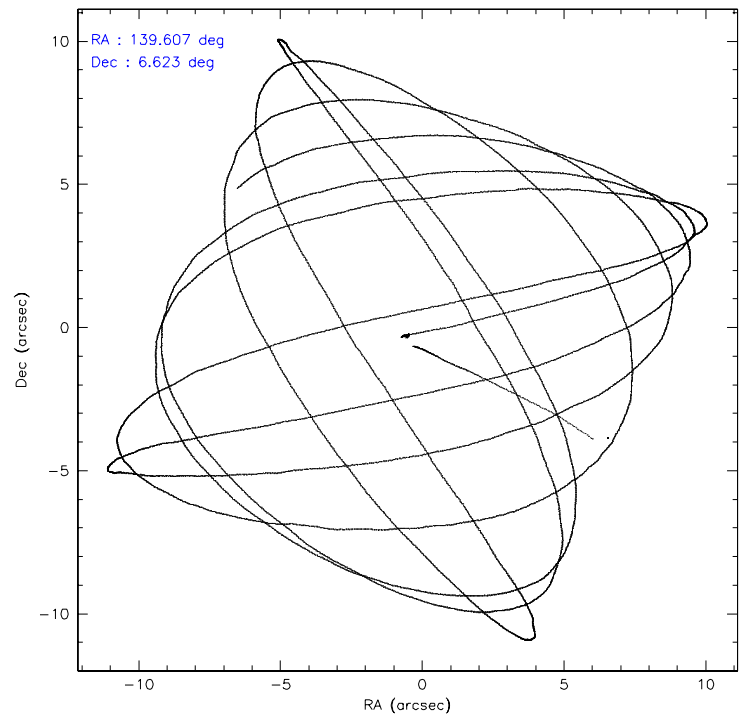
	ccd 2	ccd 3	ccd 5	ccd 6	ccd 7	ccd 8
level 1 events	31726	30853	45023	31619	40477	38941
rejected events	28221	27386	25155	28013	24869	30933
rejected %	88%	88%	55%	88%	61%	79%

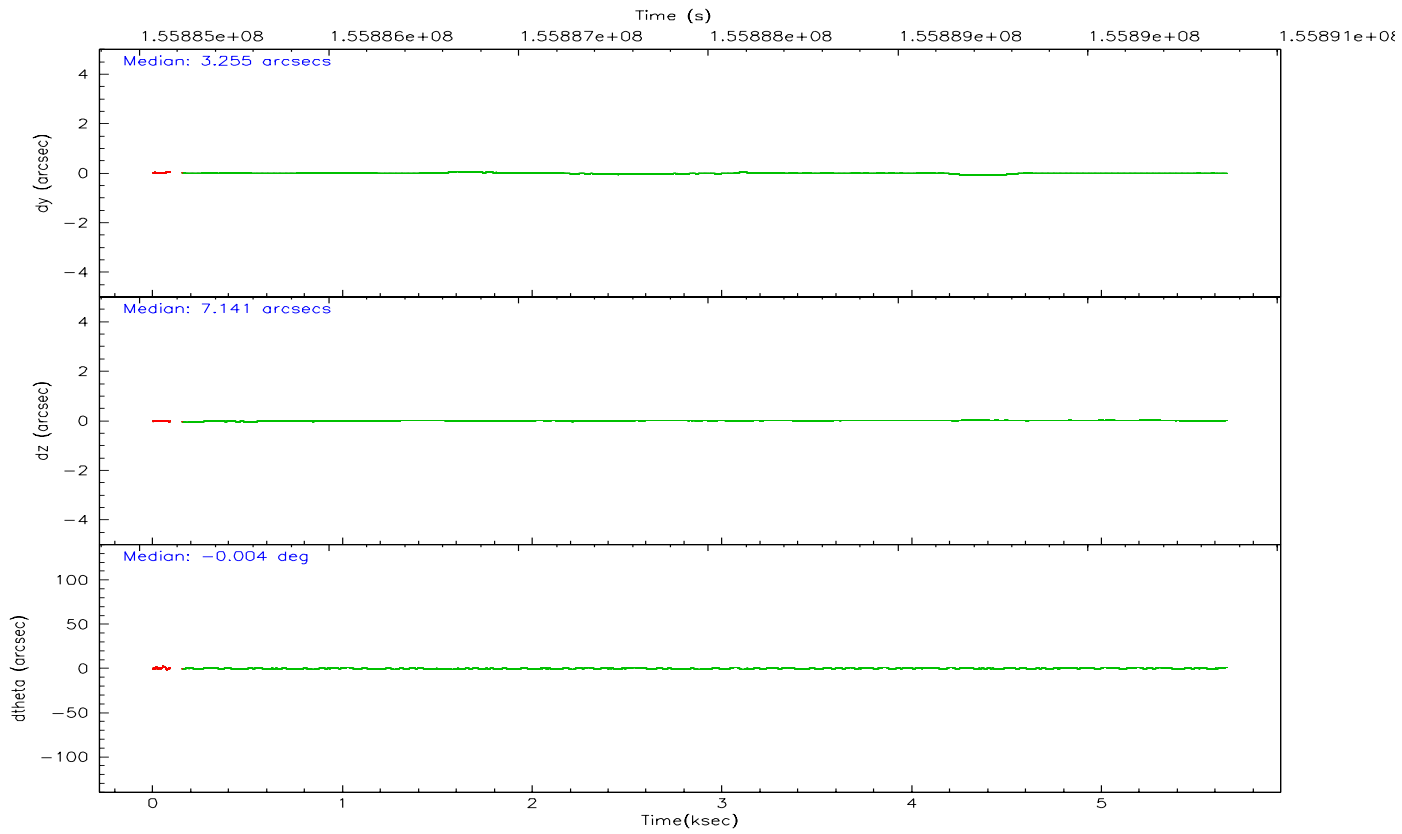
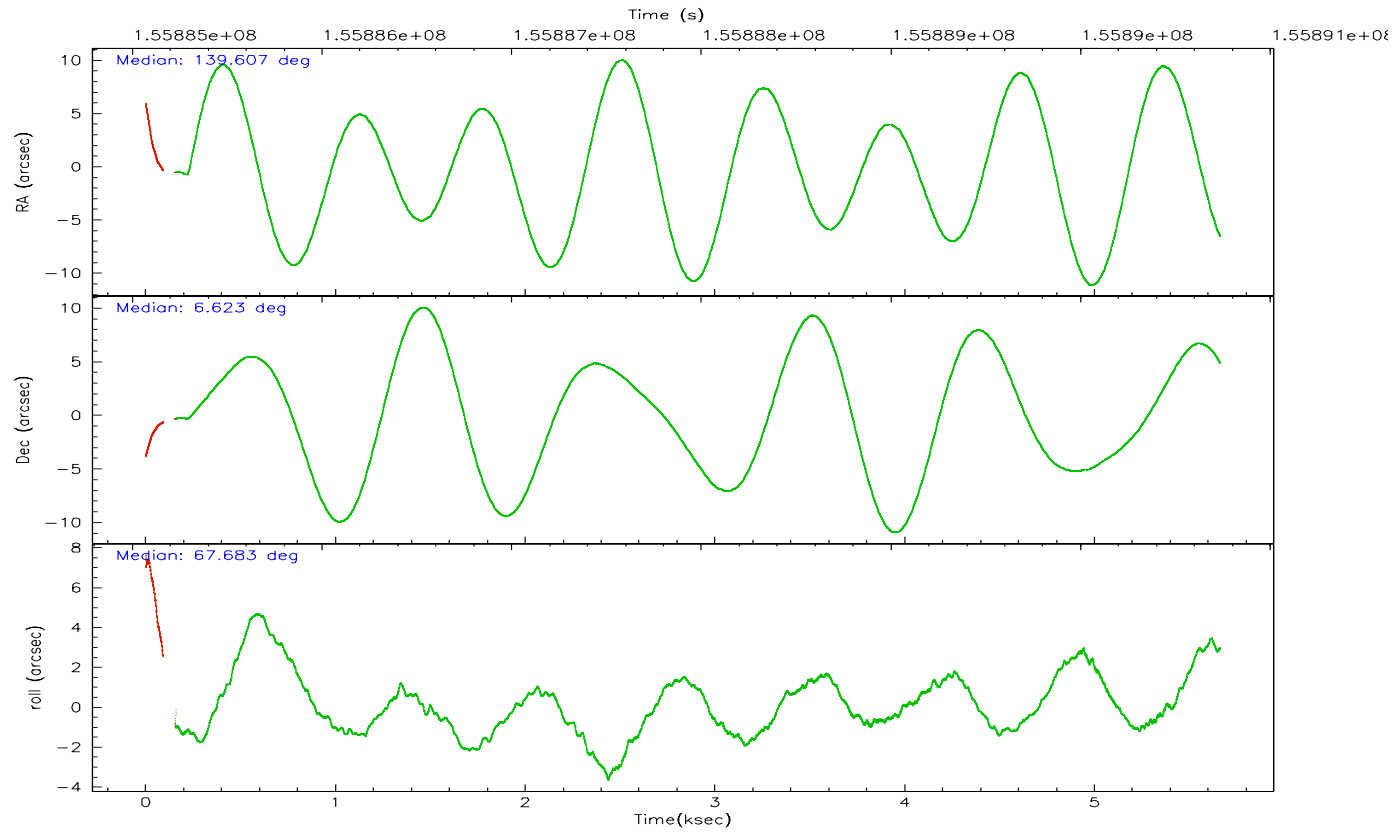
	ccd 2	ccd 3	ccd 5	ccd 6	ccd 7	ccd 8
grade 0 events	1483	1504	1684	1451	969	2534
	4%	4%	3%	4%	2%	6%
grade 1 events	18	15	218	12	25	20
	0%	0%	0%	0%	0%	0%
grade 2 events	722	644	6188	751	3856	1662
	2%	2%	13%	2%	9%	4%
grade 3 events	340	332	482	377	787	895
	1%	1%	1%	1%	1%	2%
grade 4 events	334	378	415	343	789	801
	1%	1%	0%	1%	1%	2%
grade 5 events	1237	1264	2057	1365	2691	1805
	3%	4%	4%	4%	6%	4%
grade 6 events	629	618	11145	696	9231	2127
	1%	2%	24%	2%	22%	5%
grade 7 events	26963	26098	22834	26624	22129	29097
	84%	84%	50%	84%	54%	74%

2.2 Compared Parameters

Parameter	Planned	Actual	Parameter	Planned	Actual
Instrument	ACIS	ACIS	Obspar format version number	6	6
Detector	ACIS-235678	ACIS-235678	Obspar file type	PREDICTED	ACTUAL
Grating	NONE	NONE	Obspar update status	NONE	UPDATED
Data mode	FAINT	FAINT	Number of optional ACIS chips dropped	0	0
Observation mode	POINTING	POINTING	On-chip summing requested	N	N
Pointing RA	139.610923	139.6069657336007	Subarray requested	NONE	NONE
Pointing Dec	6.596061	6.623077873640013	Alternating exposures requested	N	N
Pointing Roll	67.535872	67.69298100712142	Primary exposure time	0.000000	3.2
SIM focus pos (mm)	-0.684267	-0.6828225247311905			
SIM defocus (mm)	0	0.001444936568705701			
SIM translation stage pos (mm)	-190.132523	-190.1425803651734			
SIM translation stage offset (mm)	0	0.01005778216563158			
Observation start time	155885736.184000	155884535.42622			
Observation start date	2002-12-10T05:34:32	2002-12-10T05:15:35			
Observation end time	155890736.184000	155891493.63901			
Observation end date	2002-12-10T06:57:52	2002-12-10T07:11:33			
Read mode	TIMED	TIMED			

2.3 Aspect



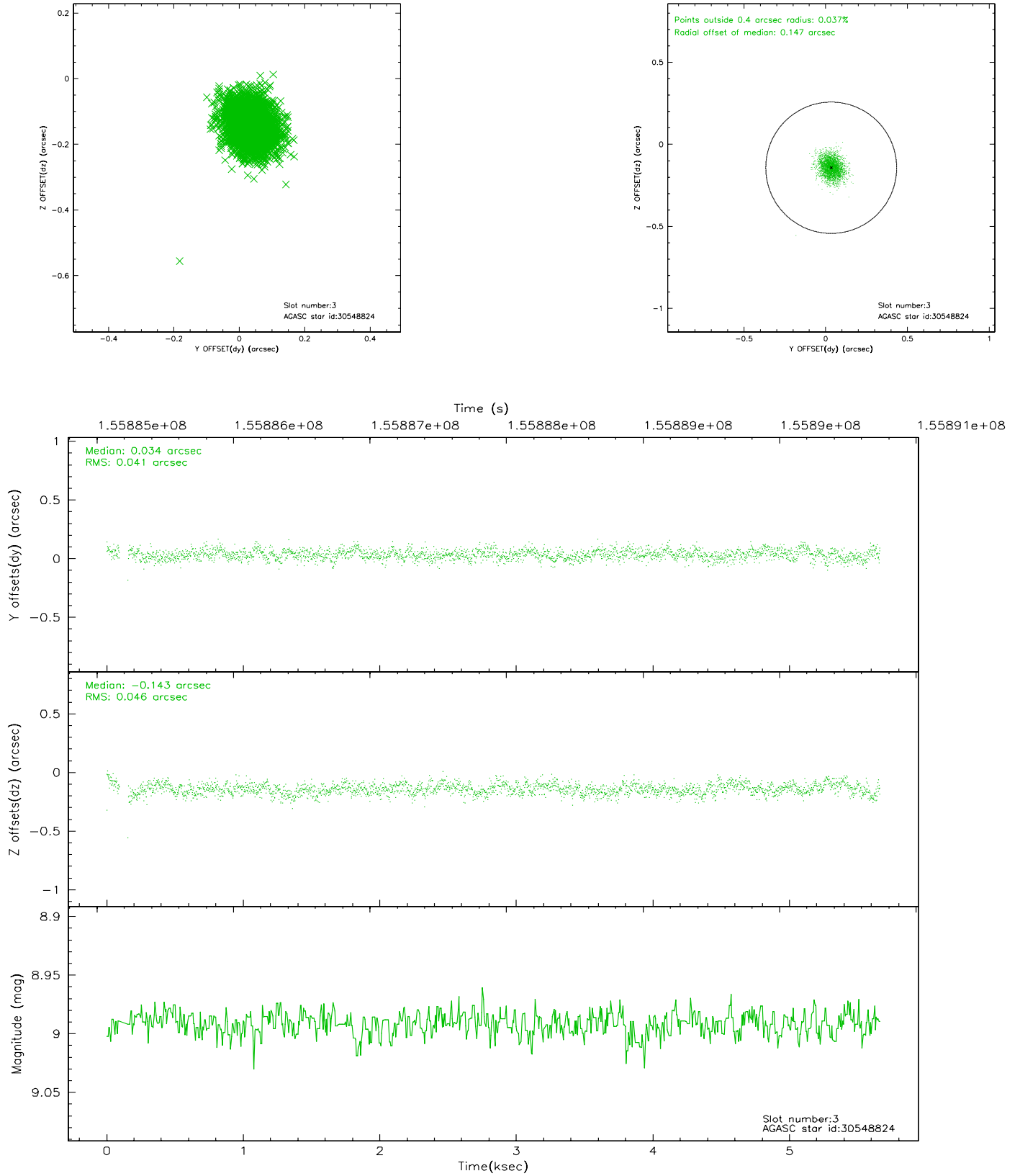


Slot Statistics

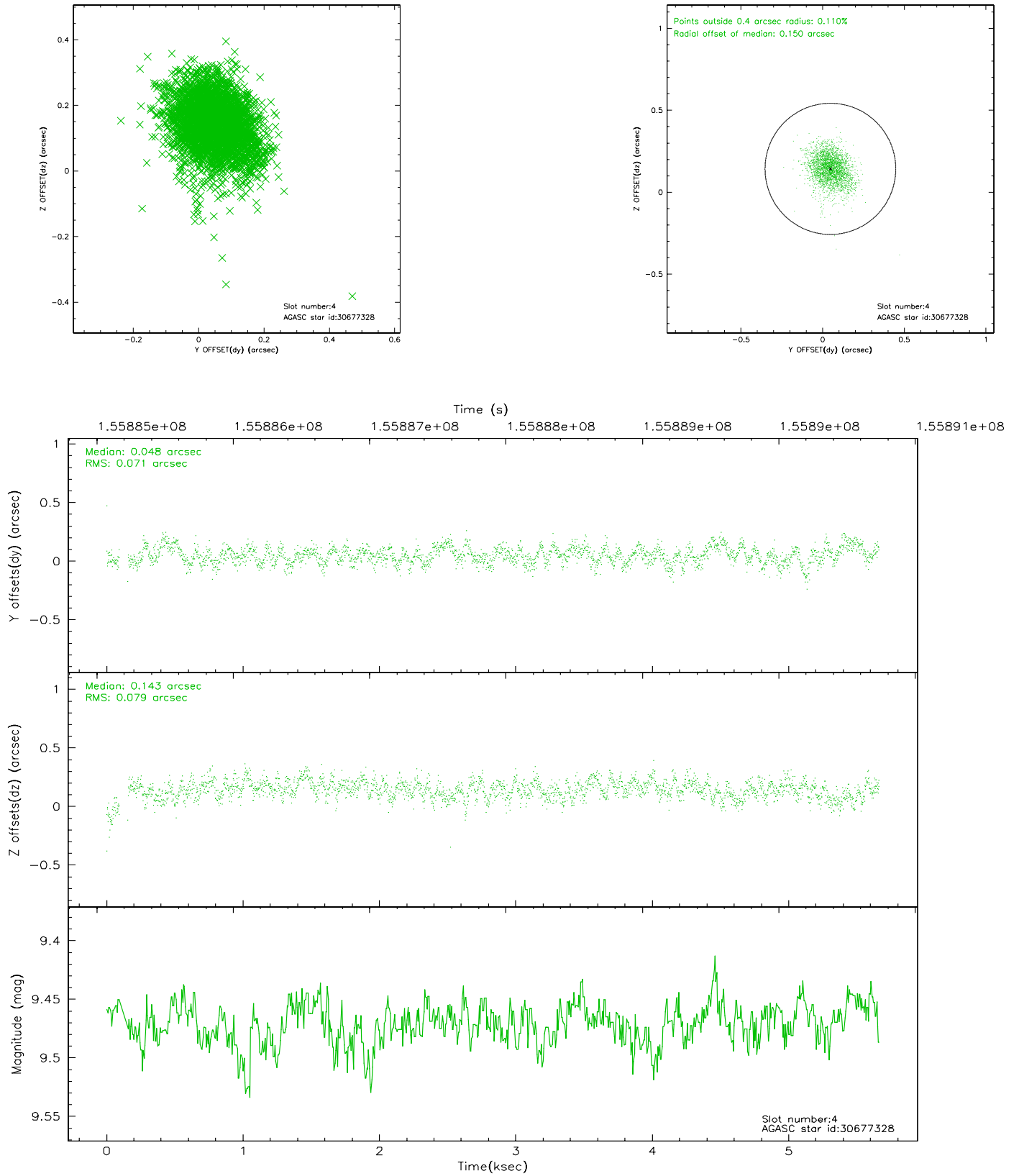
slot	status	id	mag	n_pts	med_dy	med_dz	dr1	dr2	ra	dec	mean_y	mean_z
0	FID	ACIS-S-2	7.12	1366	-0.012	0.018	0.007	0.011	0.000000	0.000000	-755.91	-1728.24
1	FID	ACIS-S-4	7.20	1366	-0.026	0.001	0.005	0.009	0.000000	0.000000	2156.87	179.12
2	FID	ACIS-S-5	7.24	1367	0.007	-0.010	0.006	0.011	0.000000	0.000000	-1807.36	174.00
3	GUIDE	30548824	8.99	2733	0.034	-0.143	0.065	0.107	139.310758	6.777745	195.15	1241.19
4	GUIDE	30677328	9.47	2731	0.048	0.143	0.109	0.183	140.179729	6.452544	302.11	-2076.97
5	GUIDE	30542632	8.41	2733	-0.023	-0.267	0.059	0.093	139.282477	7.275186	1811.75	2017.19
6	GUIDE	30683936	8.47	2733	-0.060	0.270	0.070	0.113	140.373288	6.835255	1840.61	-2187.48
7	MONITOR		0.00	0	0.000	0.000	0.000	0.000	0.000000	0.000000	0.00	0.00

2.4 Star Slots

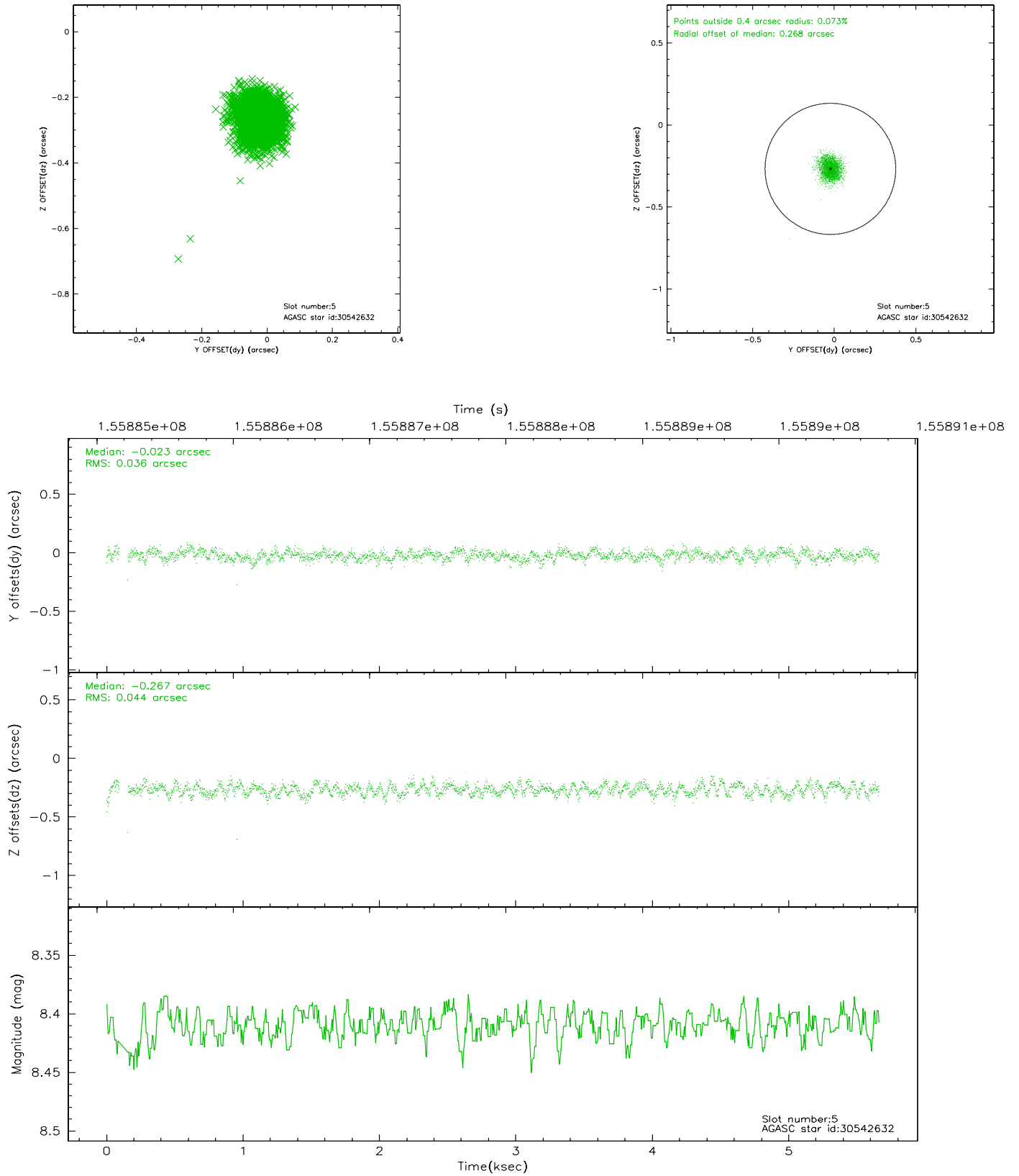
2.4.1 Slot 3



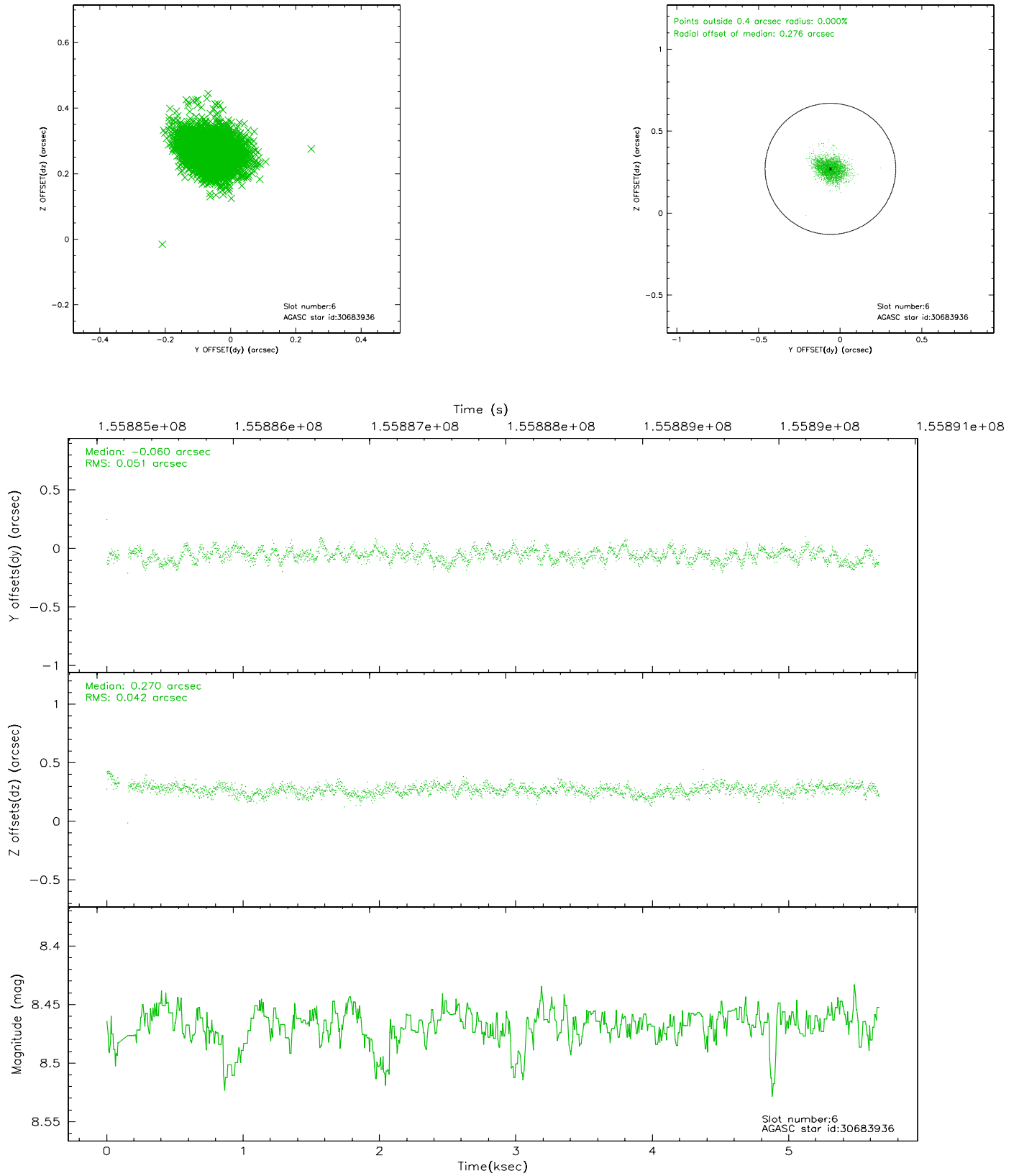
2.4.2 Slot 4



2.4.3 Slot 5

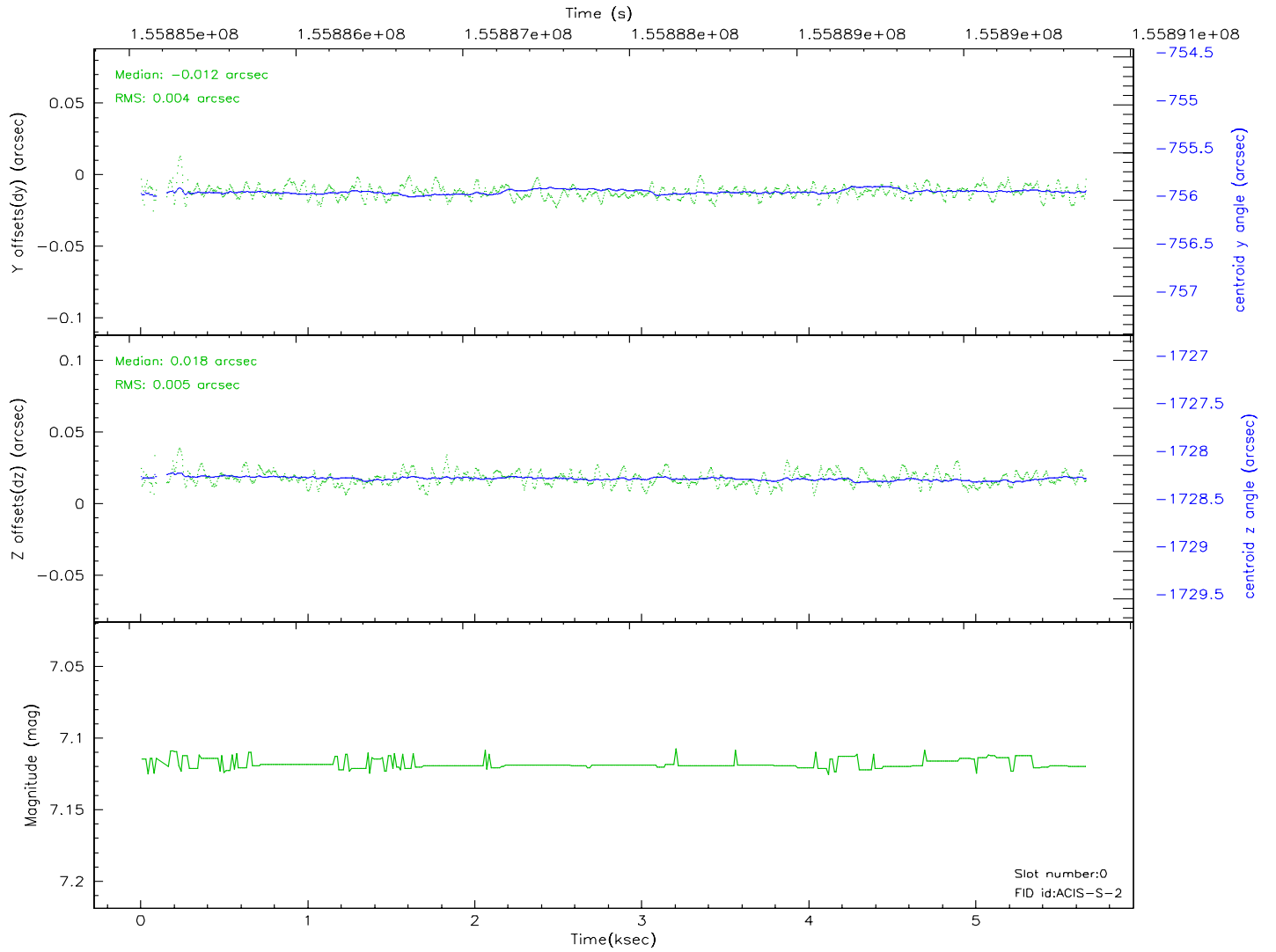
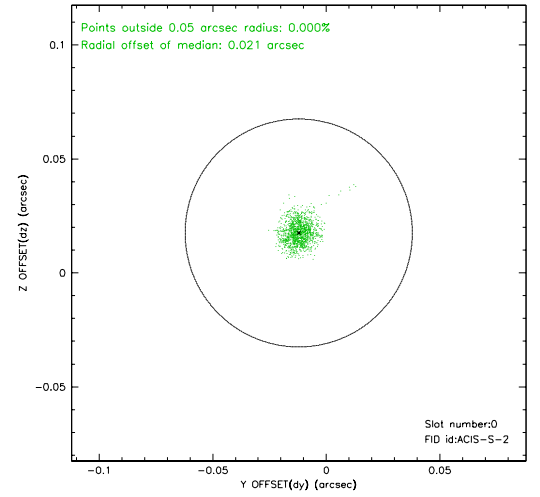
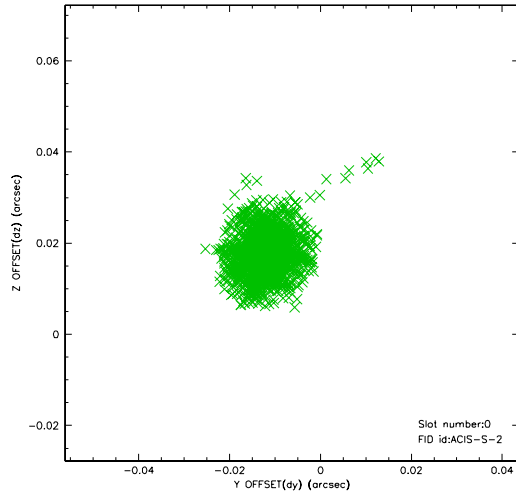


2.4.4 Slot 6

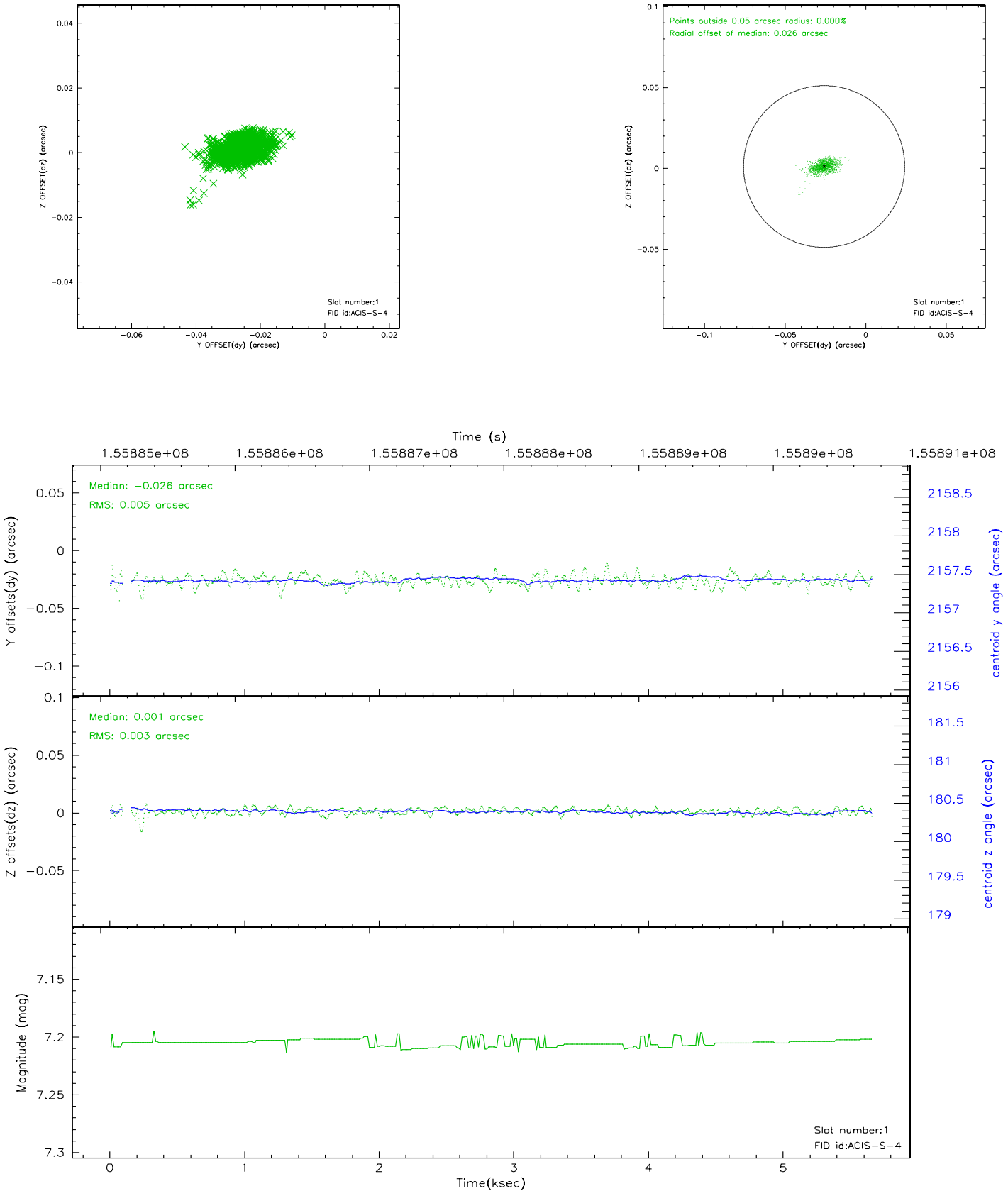


2.5 FID Slots

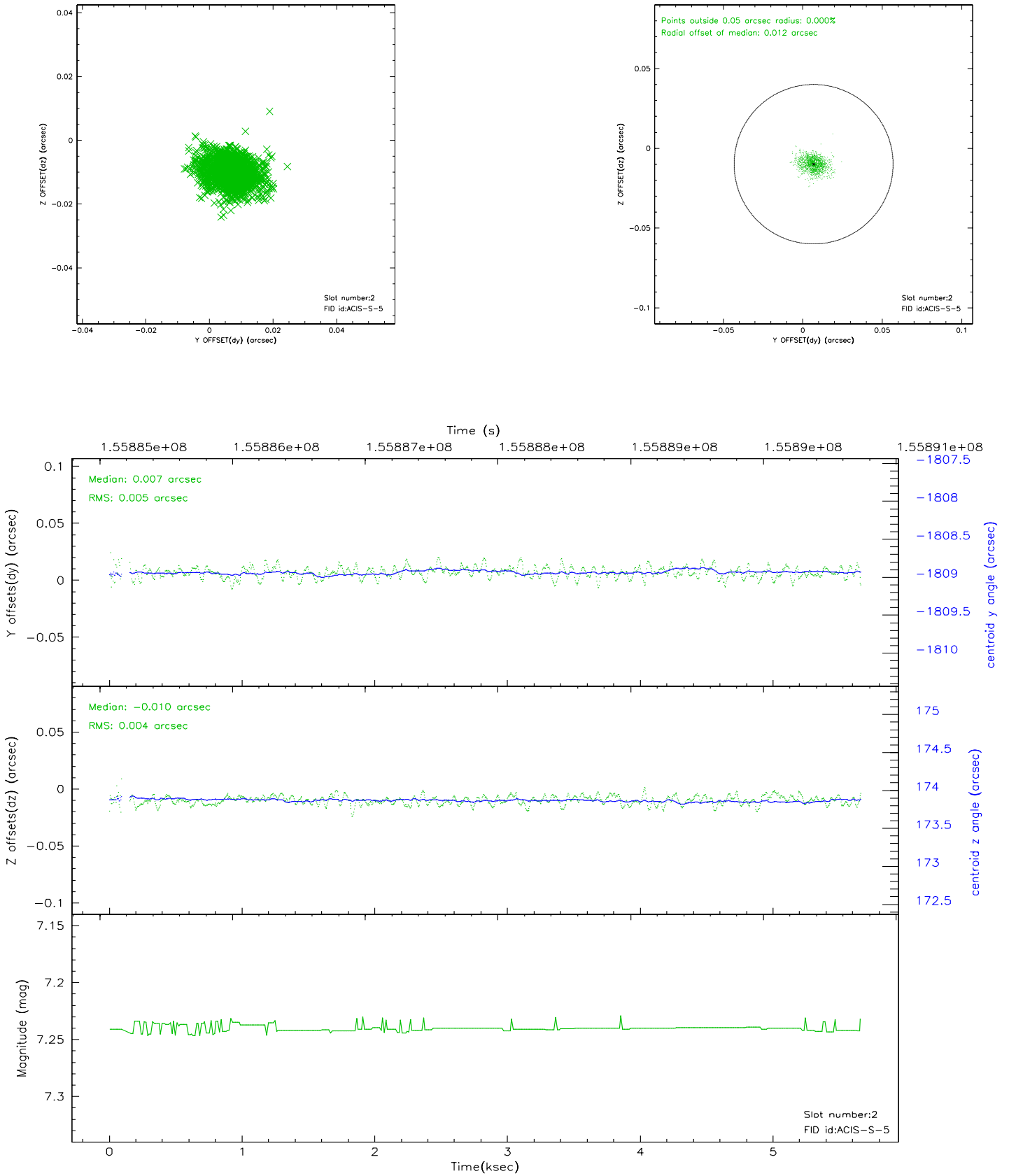
2.5.1 Slot 0



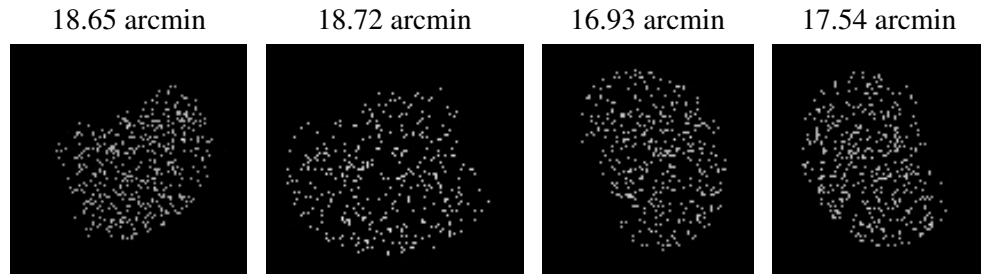
2.5.2 Slot 1



2.5.3 Slot 2



3 Point Sources



A Summary

A.1 Status

V&V Scientist	Beth Sundheim
V&V Date (YYYY-MM-DD)	2006.10.15
V&V Edition	1
V&V Disposition and Status	OK
V&V Charge Time	4.963

A.2 Comments