

V&V Reference Report

L2 ASCDS Version : 7.6.9

Observation 3473 - L2 Version 001
Chandra X-Ray Center

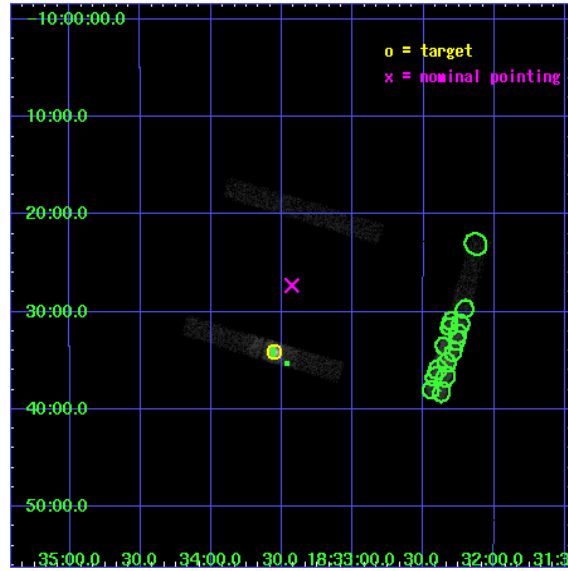
L2 Processing Date : Sep 16 2006

Contents

1	Front	2
2	OBI	3
2.1	OBI	3
2.1.1	Images	3
2.1.2	Bias	3
2.1.3	Parameters	4
2.1.4	Events	4
2.2	Compared Parameters	5
2.3	Aspect	6
2.4	Star Slots	9
2.4.1	Slot 3	9
2.4.2	Slot 4	10
2.4.3	Slot 5	11
2.4.4	Slot 6	12
2.4.5	Slot 7	13
2.5	FID Slots	14
2.5.1	Slot 0	14
2.5.2	Slot 1	15
2.5.3	Slot 2	16
3	Point Sources	17
A	Summary	18
A.1	Status	18
A.2	Comments	18

1 Front

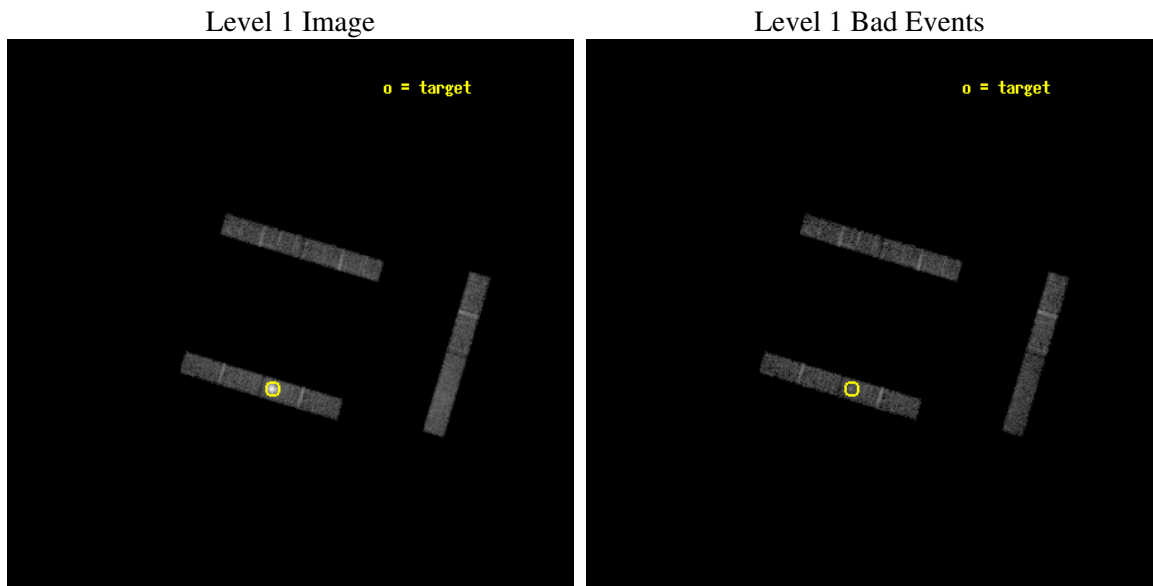
seq_num	590272
obs_id	3473
title	AO3A CALIBRATION OBSERVATIONS THE STANDARD CANDLES CAS A AND G21.5-09
observer	Dr. CXC Calibration
object	G21.5-0.9 [Chip I3, T=120, Offsets=-2,2,0]
dtcycle	0
cycle	P
ra_targ	278.389583
dec_targ	-10.568528
ra_nom	278.35743753994
dec_nom	-10.455153463126
roll_nom	106.67246038631
revision	2
ontime	9671.1999475956
livetime	9323.354082552
ontime0	9670.0589275658
ontime1	9671.1999475956
ontime2	9671.1999475956
ontime3	9671.1999475956
ontime6	9670.0589275658
ontime7	9670.0589275658
l2events	42525



2 OBI

2.1 OBI

2.1.1 Images



2.1.2 Bias

Chip 0

Chip 1

Chip 2



Chip 3

Chip 6

Chip 7



2.1.3 Parameters

obi_num	1
ascdsver	7.6.9
caldbver	3.2.3
date	2006-09-16T13:37:33
revision	2

sched_exp_time	9500.000000
ontime	10177.971635342
ontime0	10176.830615312
ontime1	10177.971635342
ontime2	10177.971635342
ontime3	10177.971635342
ontime6	10176.830615312
ontime7	10176.830615312
l1events	139261

2.1.4 Events

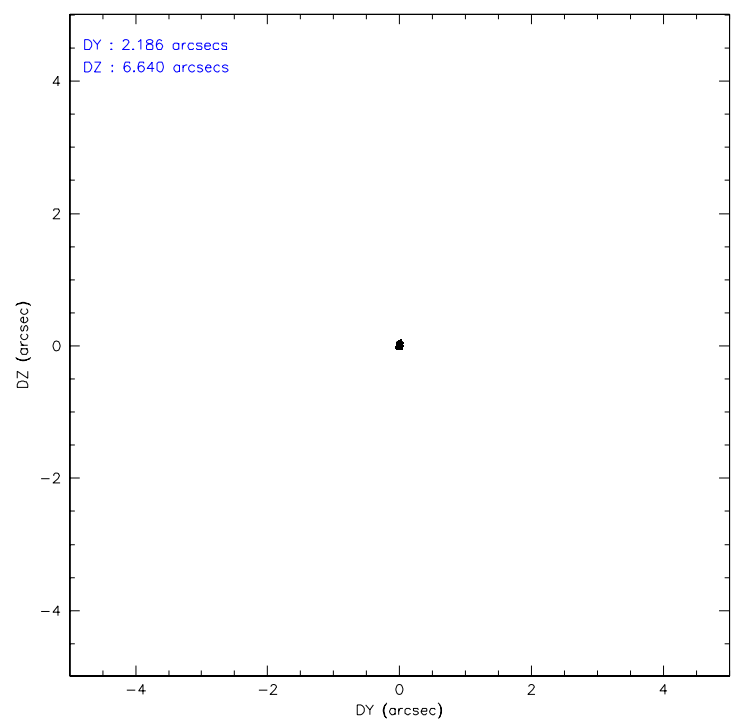
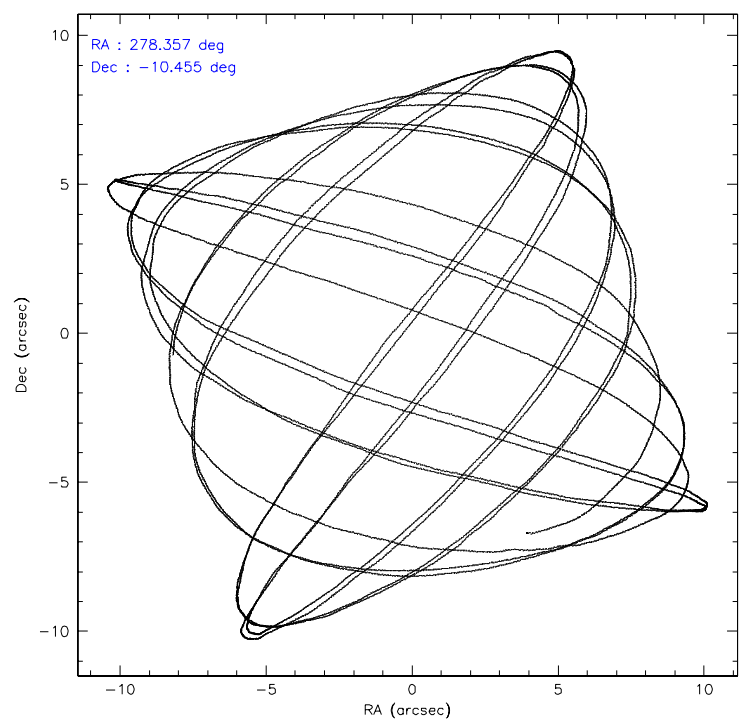
	ccd 0	ccd 1	ccd 2	ccd 3	ccd 6	ccd 7
level 1 events	17144	17974	18924	43266	19899	22054
rejected events	14958	14974	16790	17124	17737	12730
rejected %	87%	83%	88%	39%	89%	57%

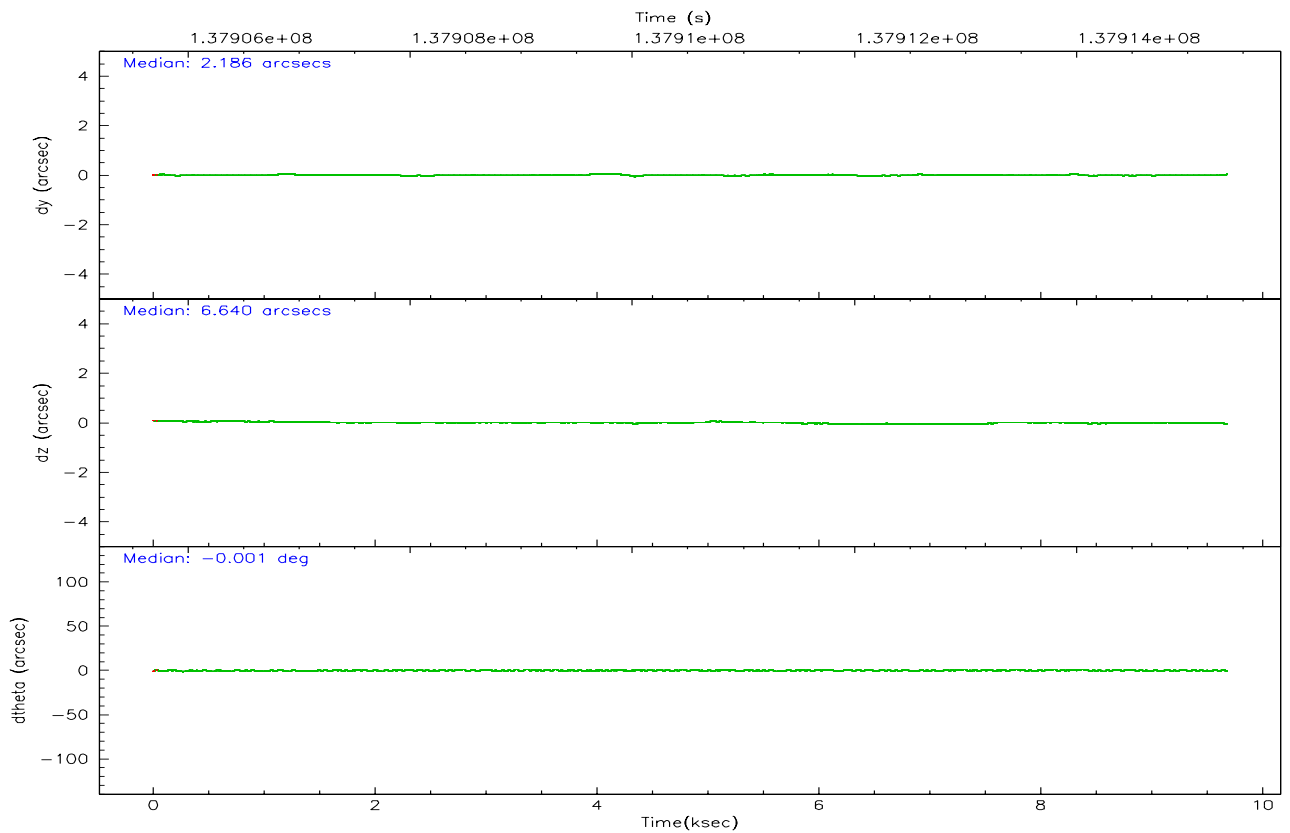
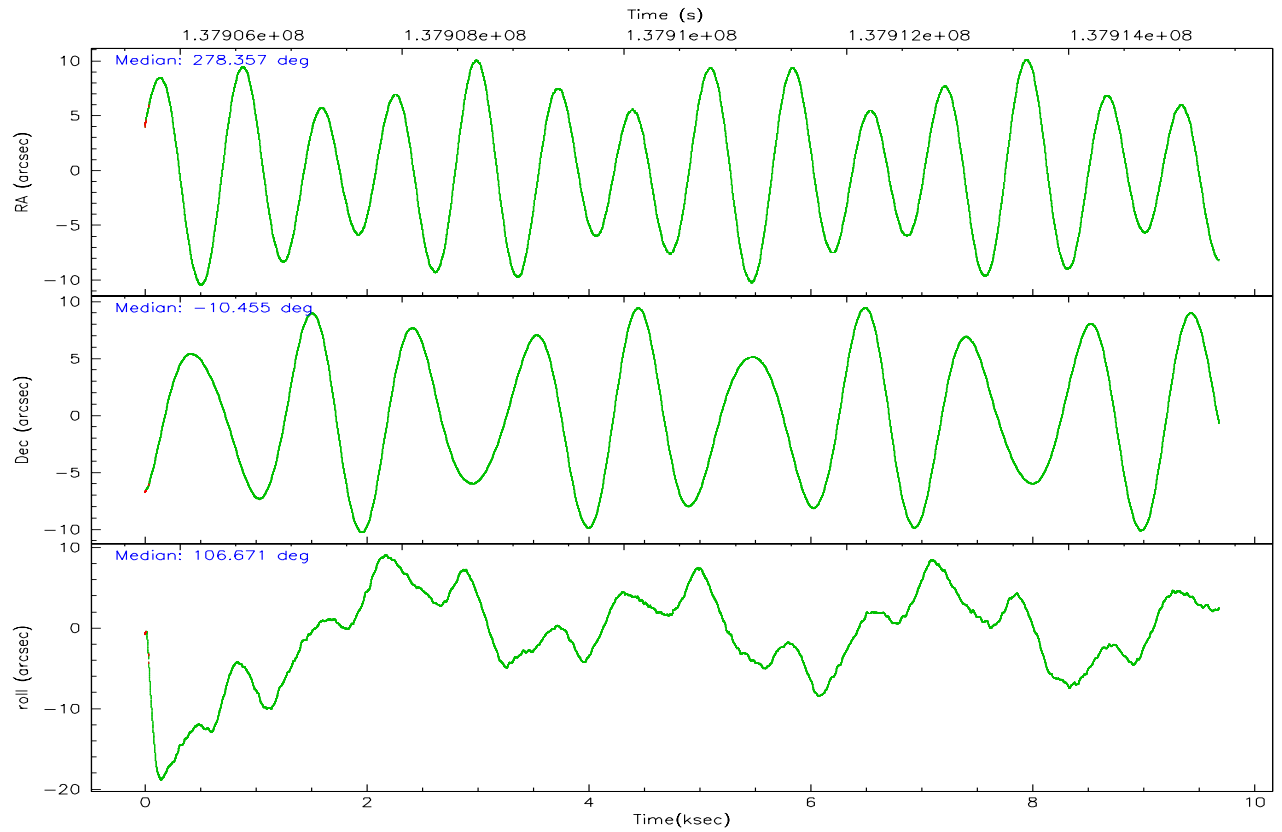
	ccd 0	ccd 1	ccd 2	ccd 3	ccd 6	ccd 7
grade 0 events	899	1410	928	18533	845	781
	5%	7%	4%	42%	4%	3%
grade 1 events	1	11	9	80	7	16
	0%	0%	0%	0%	0%	0%
grade 2 events	400	484	379	3584	417	2211
	2%	2%	2%	8%	2%	10%
grade 3 events	337	399	284	1362	314	878
	1%	2%	1%	3%	1%	3%
grade 4 events	297	347	309	1429	320	838
	1%	1%	1%	3%	1%	3%
grade 5 events	590	607	534	655	657	1636
	3%	3%	2%	1%	3%	7%
grade 6 events	383	484	344	1678	399	5093
	2%	2%	1%	3%	2%	23%
grade 7 events	14237	14232	16137	15945	16940	10601
	83%	79%	85%	36%	85%	48%

2.2 Compared Parameters

Parameter	Planned	Actual	Parameter	Planned	Actual
Instrument	ACIS	ACIS	Obspar format version number	6	6
Detector	ACIS-012367	ACIS-012367	Obspar file type	PREDICTED	ACTUAL
Grating	NONE	NONE	Obspar update status	NONE	UPDATED
Data mode	FAINT	FAINT	Number of optional ACIS chips dropped	0	0
Observation mode	POINTING	POINTING	On-chip summing requested	N	N
Pointing RA	278.377756	278.3574375399389	Subarray requested	CUSTOM	1/4
Pointing Dec	-10.473939	-10.45515346312581	Subarray start row	1	1
Pointing Roll	106.467468	106.6724603863105	Subarray row count	256	256
Window start time	135216064.184000	135216064.184000	Alternating exposures requested	N	N
Window stop time	139190464.184000	139190464.184000	Primary exposure time	0.000000	1.1
SIM focus pos (mm)	-0.782348	-0.7809083437167272			
SIM defocus (mm)	0	0.001439871863259334			
SIM translation stage pos (mm)	-232.092463	-232.0989598023052			
SIM translation stage offset (mm)	-1.5	-1.493493200624528			
Observation start time	137905863.184000	137904836.97191			
Observation start date	2002-05-16T03:09:59	2002-05-16T02:53:56			
Observation end time	137915363.184000	137916240.60988			
Observation end date	2002-05-16T05:48:19	2002-05-16T06:04:00			
Read mode	TIMED	TIMED			

2.3 Aspect



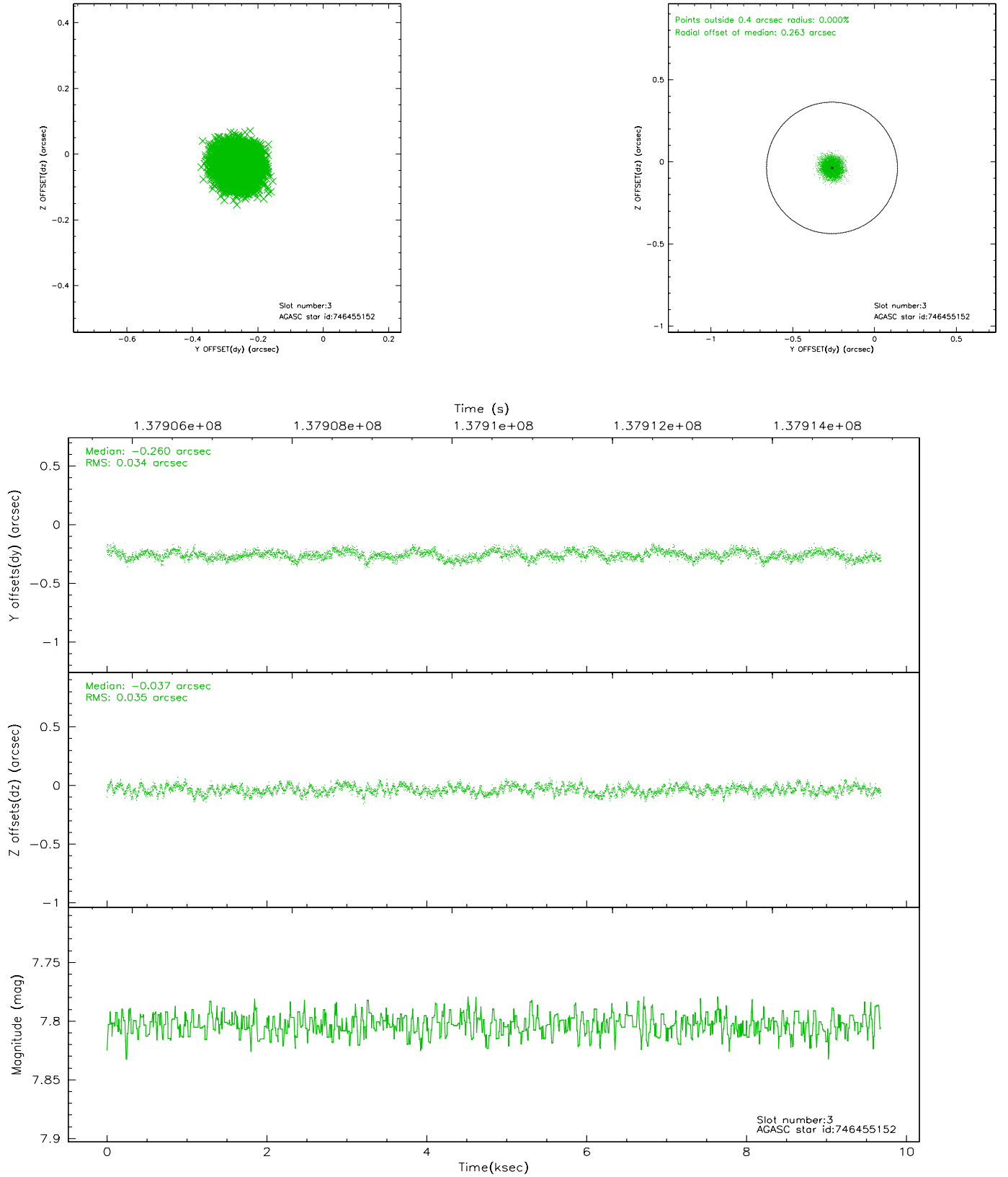


Slot Statistics

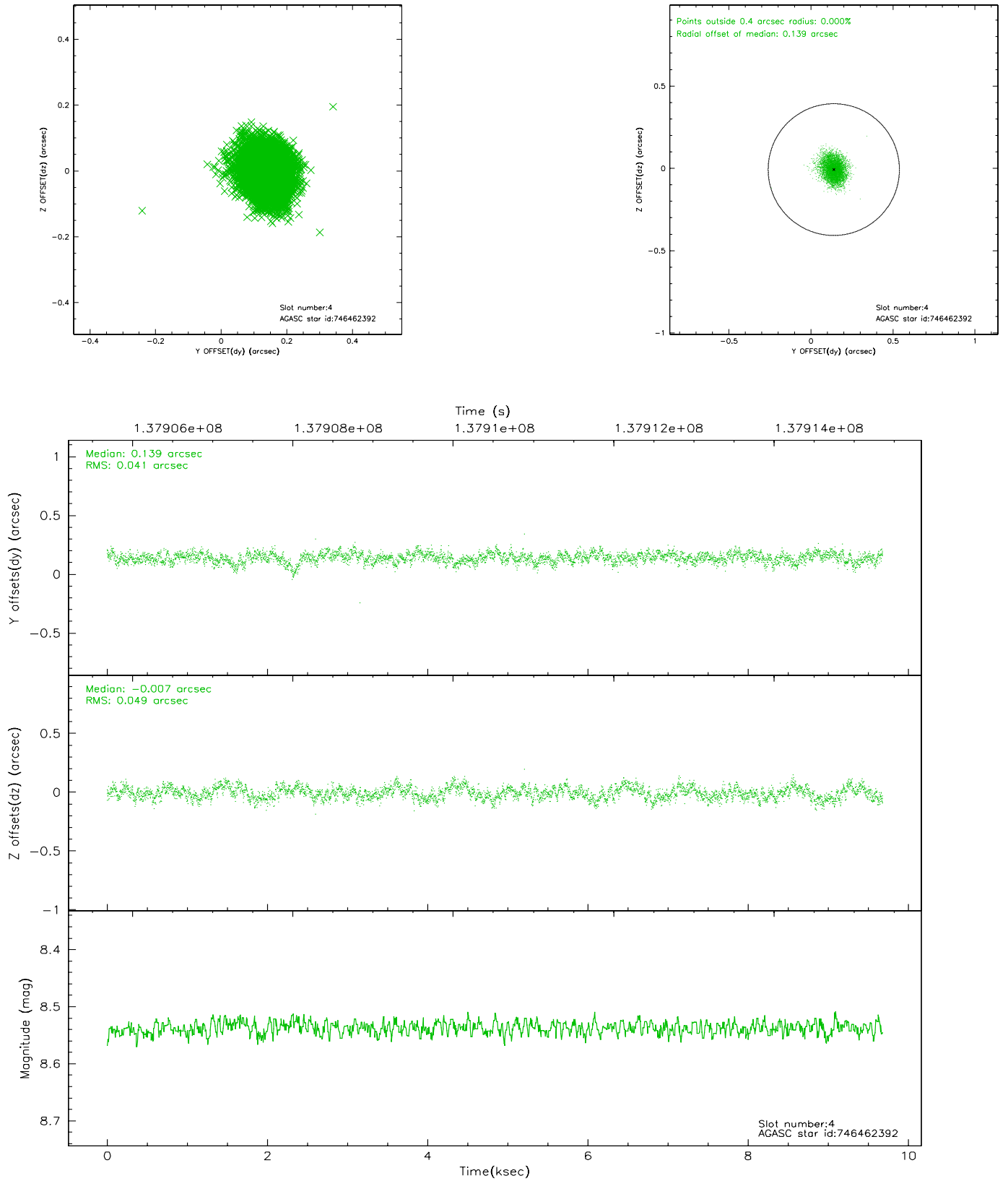
slot	status	id	mag	n_pts	med_dy	med_dz	dr1	dr2	ra	dec	mean_y	mean_z
0	FID	ACIS-I-1	7.25	2361	-0.000	0.083	0.006	0.011	0.000000	0.000000	937.58	-860.54
1	FID	ACIS-I-5	7.24	2361	-0.063	0.064	0.006	0.010	0.000000	0.000000	-1810.24	1036.70
2	FID	ACIS-I-6	7.26	2361	-0.028	-0.076	0.007	0.013	0.000000	0.000000	402.55	1681.65
3	GUIDE	746455152	7.80	4722	-0.260	-0.037	0.053	0.081	278.447893	-9.976732	1645.65	-746.18
4	GUIDE	746462392	8.54	4723	0.139	-0.007	0.069	0.109	279.038421	-10.890715	-2103.45	-1814.54
5	GUIDE	746455112	8.94	4719	0.139	-0.011	0.078	0.125	278.266531	-10.703234	-680.59	610.42
6	GUIDE	746460328	9.80	4636	-0.124	0.015	0.182	0.272	278.603974	-9.898096	1759.83	-1356.88
7	GUIDE	746461728	9.77	4717	0.115	0.032	0.132	0.210	278.986921	-10.530755	-808.93	-2009.67

2.4 Star Slots

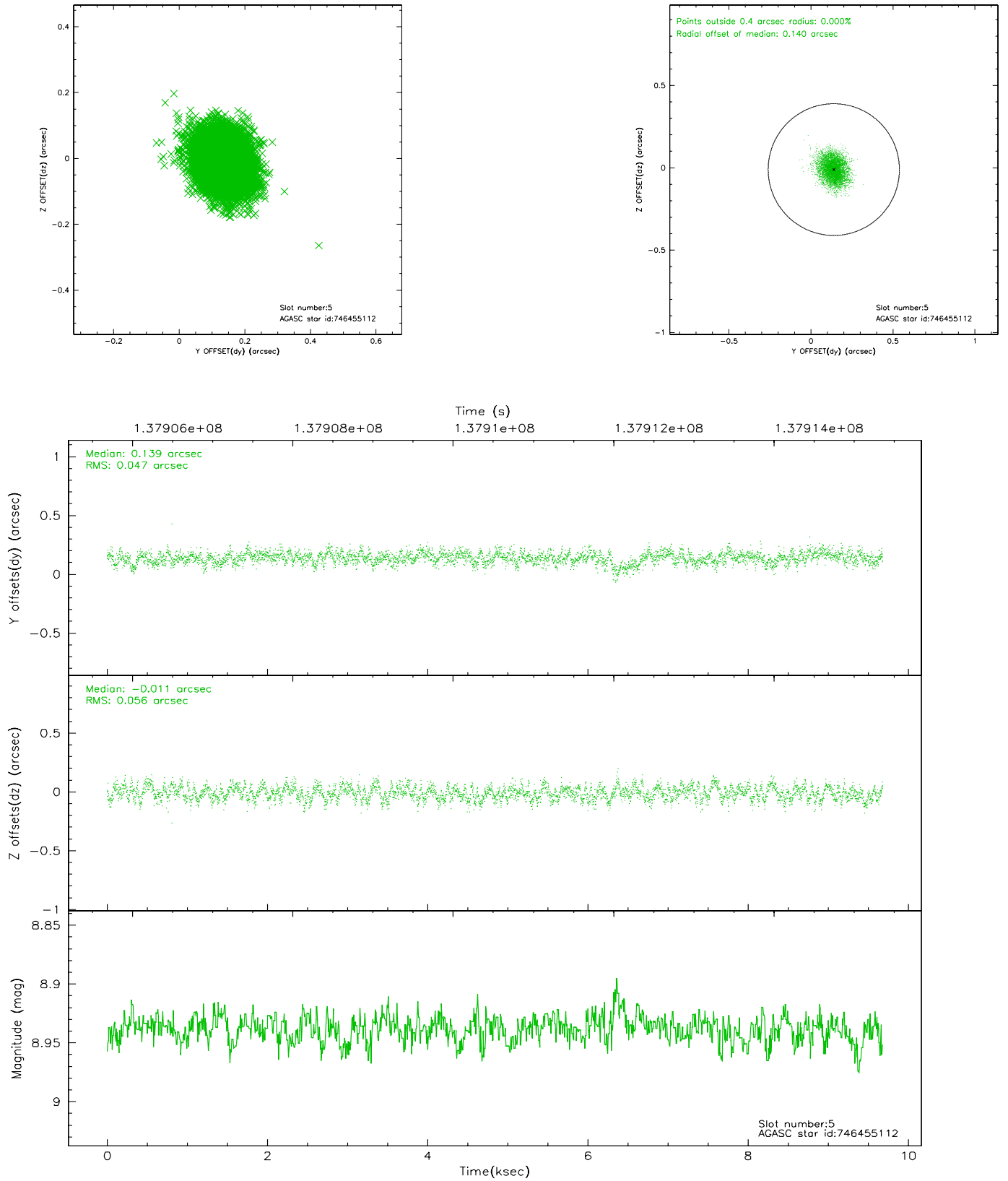
2.4.1 Slot 3



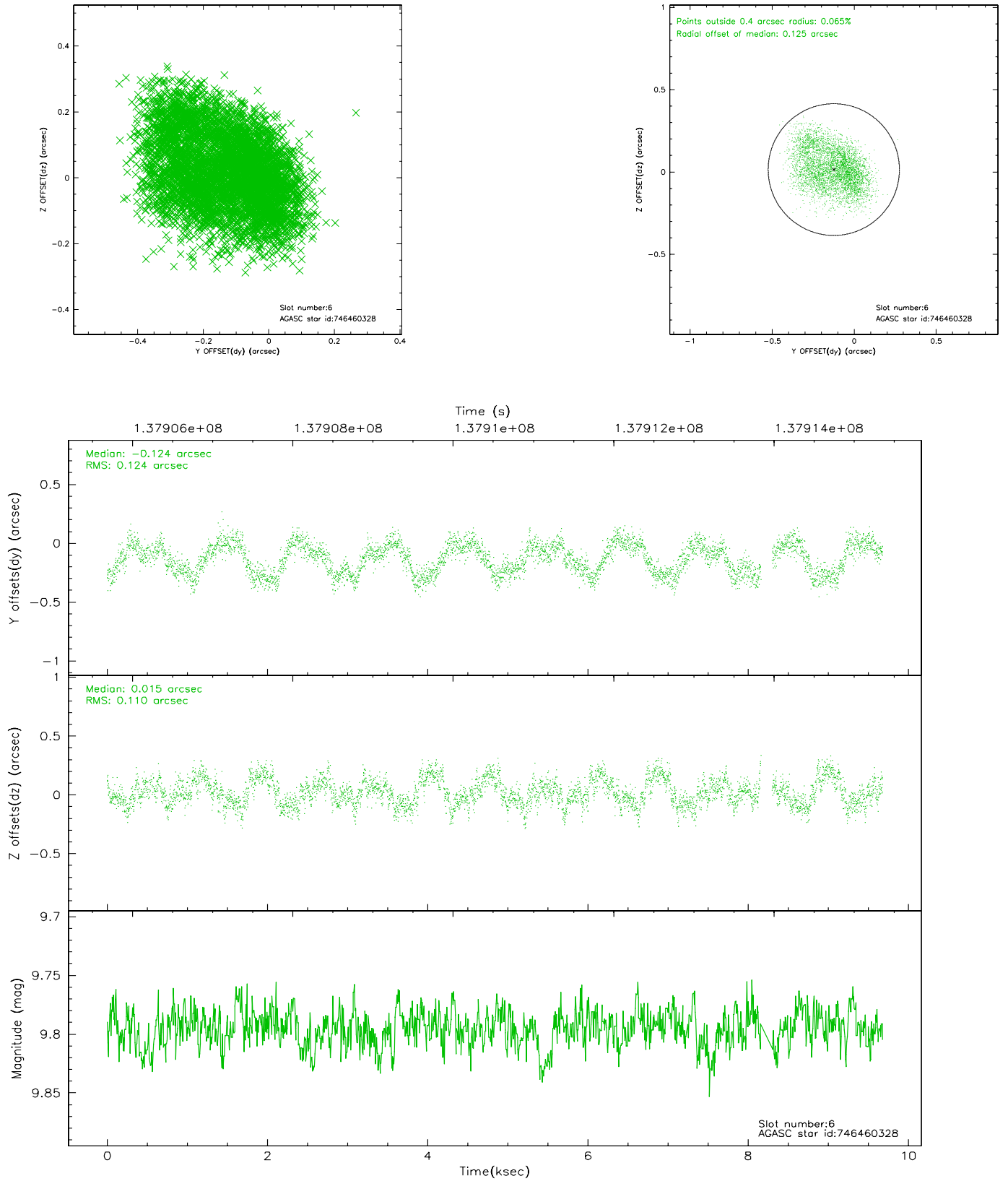
2.4.2 Slot 4



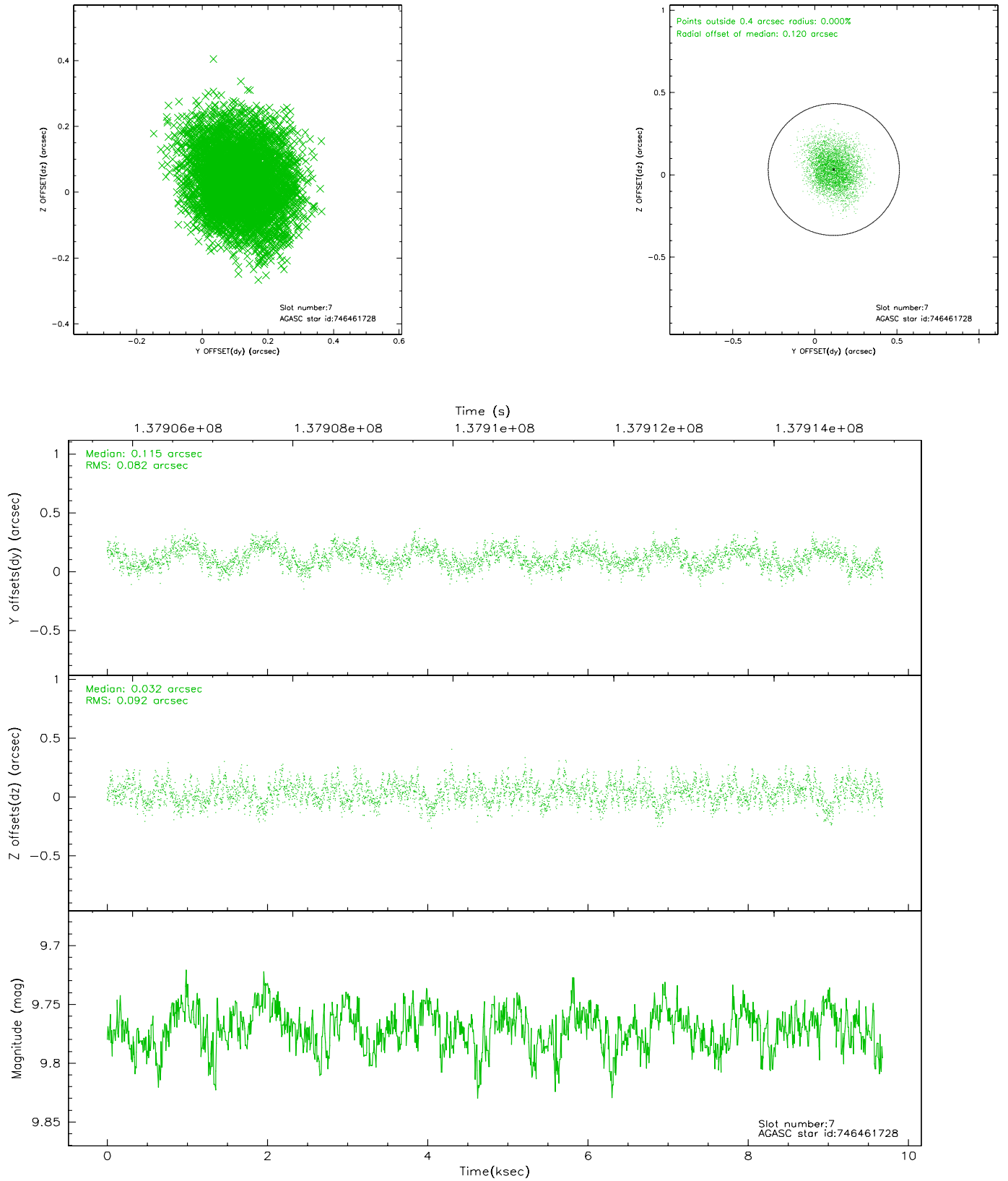
2.4.3 Slot 5



2.4.4 Slot 6

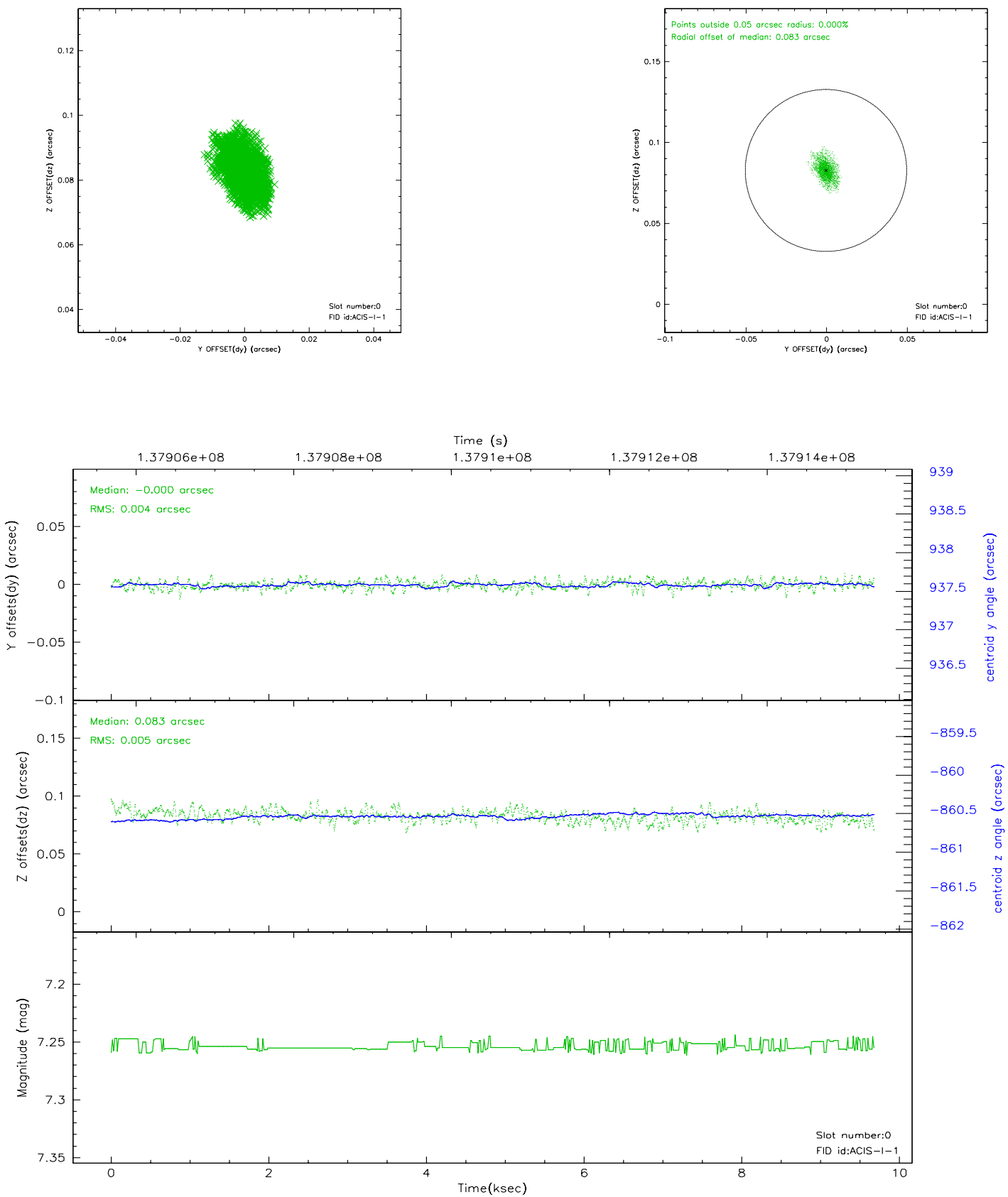


2.4.5 Slot 7

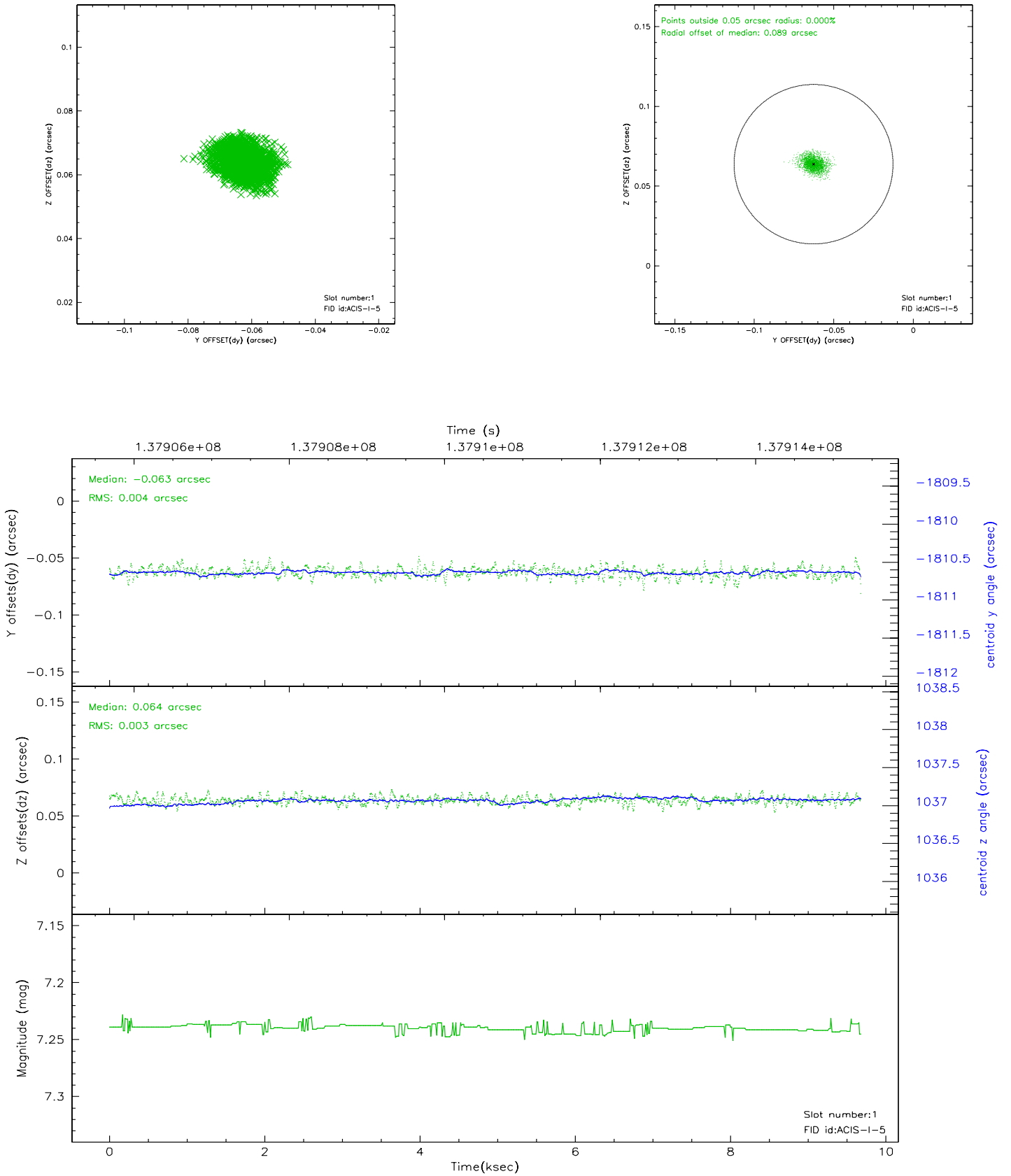


2.5 FID Slots

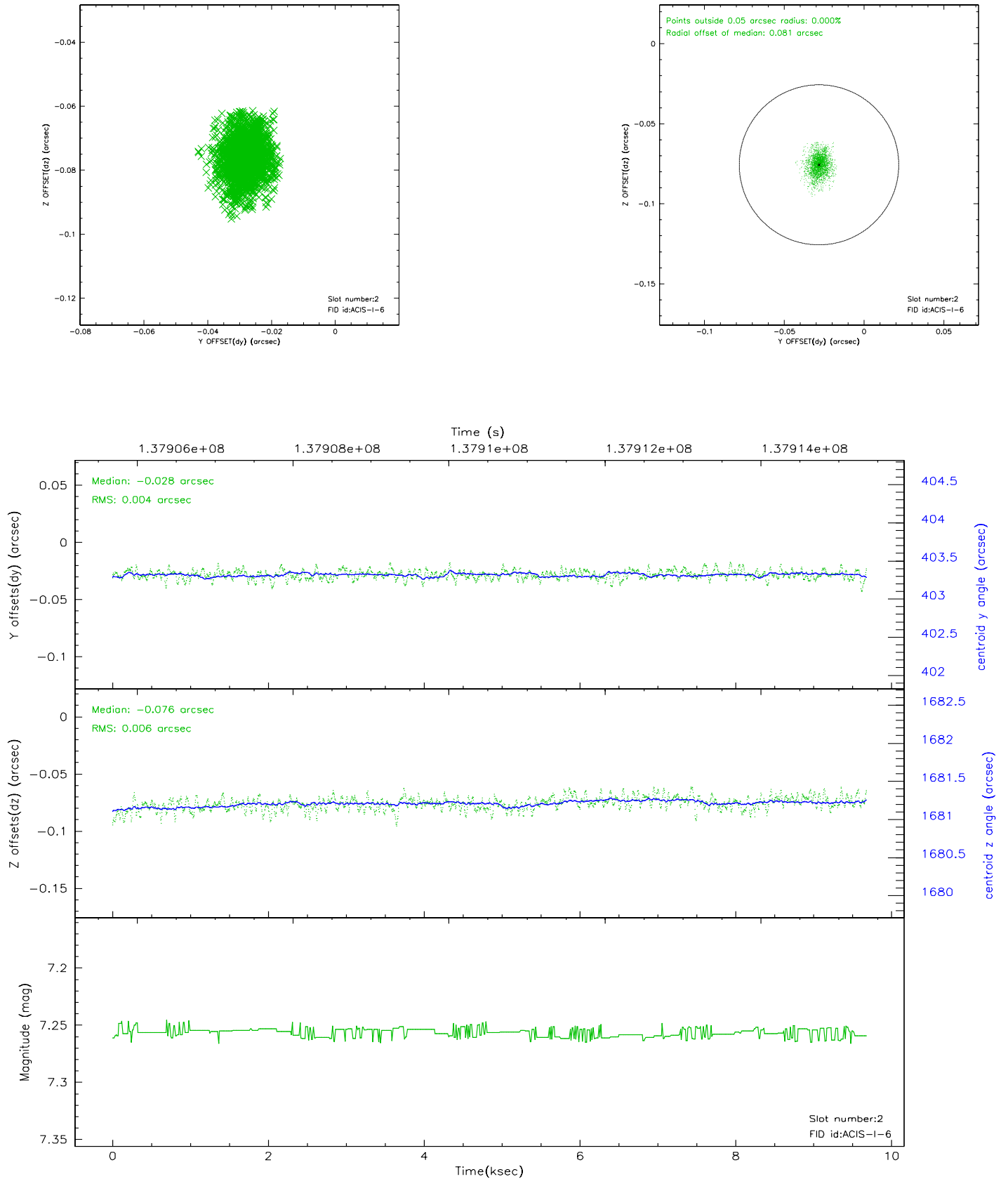
2.5.1 Slot 0



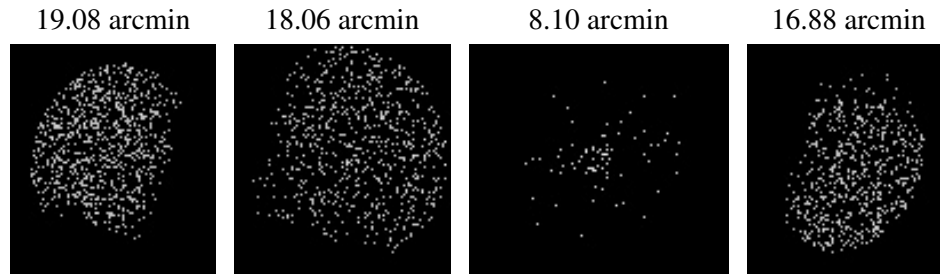
2.5.2 Slot 1



2.5.3 Slot 2



3 Point Sources



A Summary

A.1 Status

V&V Scientist	Jen Lauer
V&V Date (YYYY-MM-DD)	2006.09.18
V&V Edition	1
V&V Disposition and Status	OK
V&V Charge Time	9.672

A.2 Comments

Window constraint met.