

V&V Reference Report

L2 ASCDS Version : 7.6.8.1

Observation 3463 - L2 Version 001
Chandra X-Ray Center

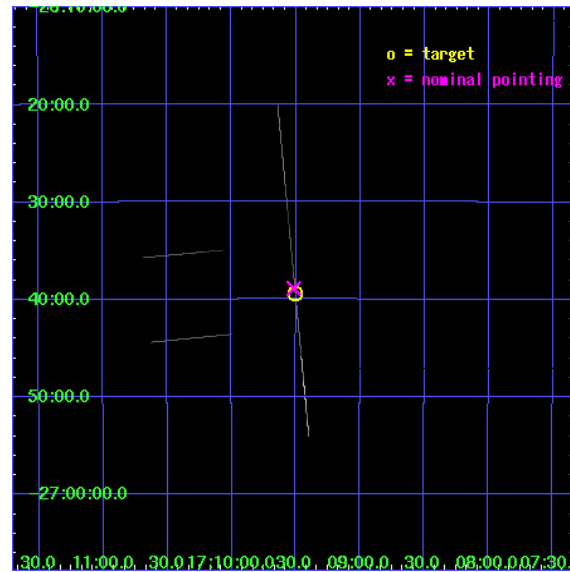
L2 Processing Date : Sep 8 2006

Contents

1	Front	2
2	OBI	3
2.1	OBI	3
2.1.1	Images	3
2.1.2	Bias	3
2.1.3	Parameters	4
2.1.4	Events	4
2.2	Compared Parameters	5
2.3	Aspect	6
2.4	Star Slots	9
2.4.1	Slot 3	9
2.4.2	Slot 4	10
2.4.3	Slot 5	11
2.4.4	Slot 6	12
2.4.5	Slot 7	13
2.5	FID Slots	14
2.5.1	Slot 0	14
2.5.2	Slot 1	15
2.5.3	Slot 2	16
A	Summary	17
A.1	Status	17
A.2	Comments	17

1 Front

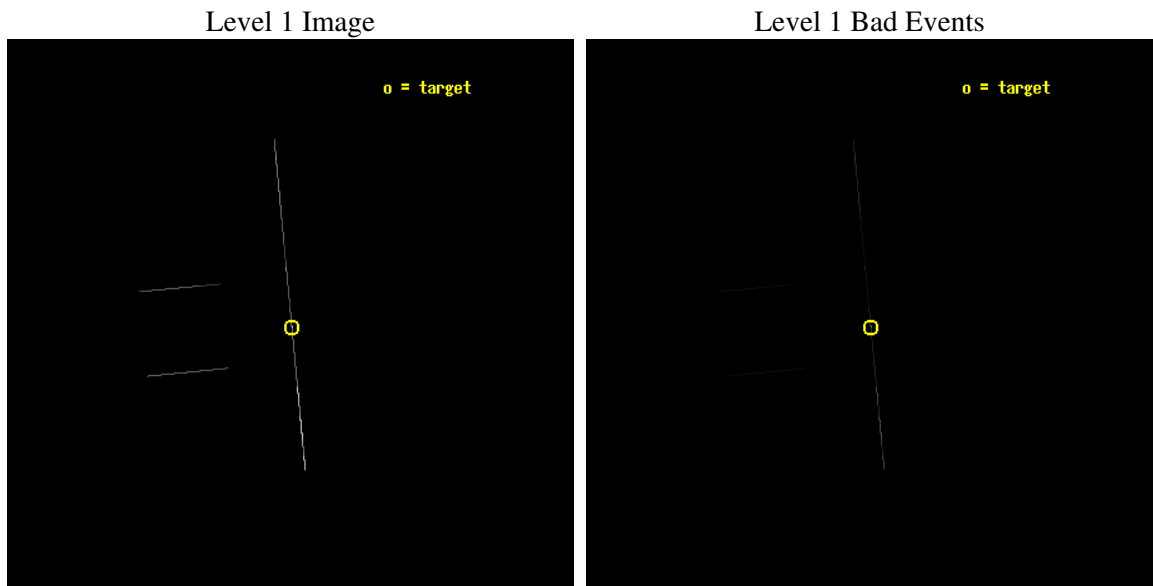
seq_num	400238
obs_id	3463
title	A FAINT NEUTRON STAR SOFT X-RAY TRANSIENT RETURNING TO QUIESCENCE
observer	Dr Peter Jonker
object	RX J170930.2-263927
ra_targ	257.375833
dec_targ	-26.6575
ra_nom	257.37874203411
dec_nom	-26.648196066845
roll_nom	84.529909821919
revision	2
ontime	8493.5778008252
livetime	8460.3997625408
ontime2	8255.709072575
ontime3	8273.276992321
ontime5	8480.4354549497
ontime6	8144.8377230018
ontime7	8493.5778008252
ontime8	6470.9348536134
l2events	937437



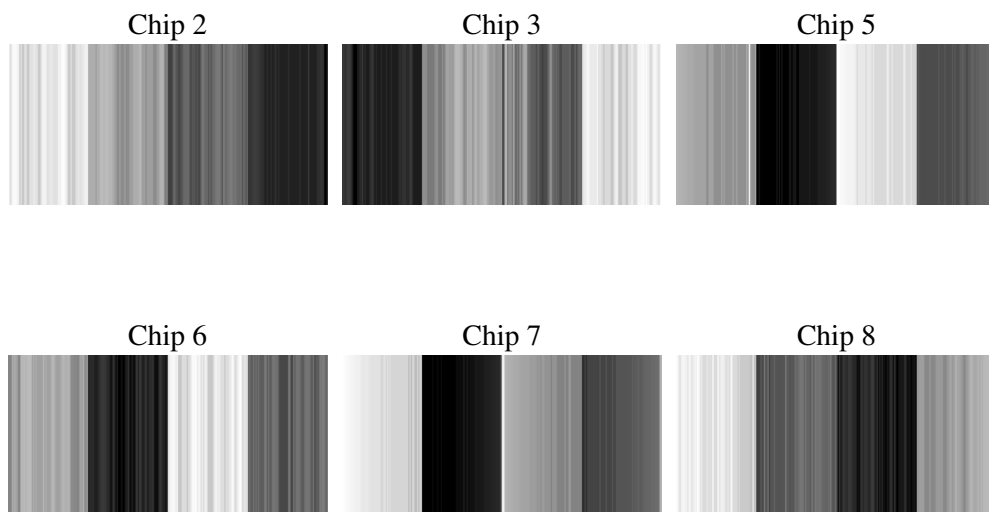
2 OBI

2.1 OBI

2.1.1 Images



2.1.2 Bias



2.1.3 Parameters

obi_num	0
ascdsver	7.6.8.1
caldbver	3.2.3
date	2006-09-08T05:51:17
revision	2

sched_exp_time	15000.000000
ontime	8669.0026822835
ontime2	8431.0869708508
ontime3	8448.7383843064
ontime5	8655.8610167652
ontime6	8320.2629512548
ontime7	8669.0026822835
ontime8	6618.8420940936
l1events	1382624

2.1.4 Events

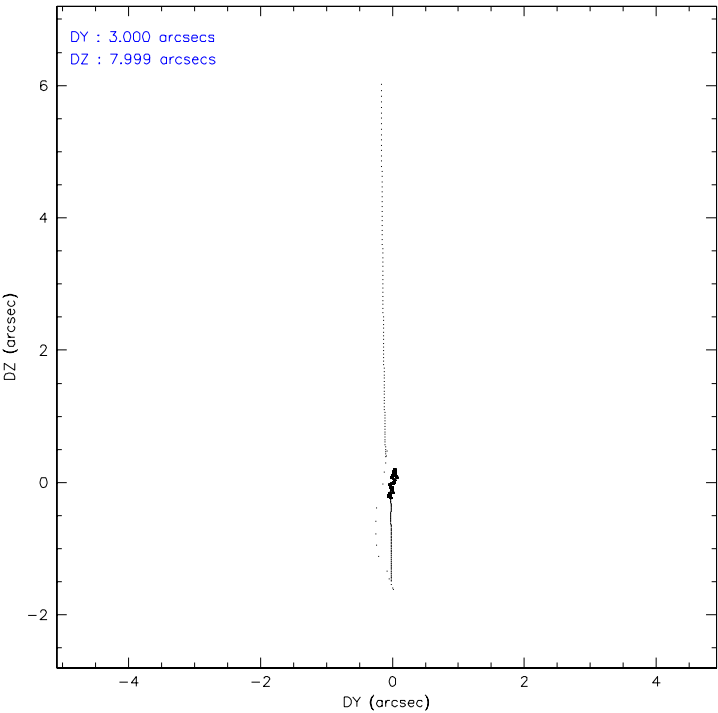
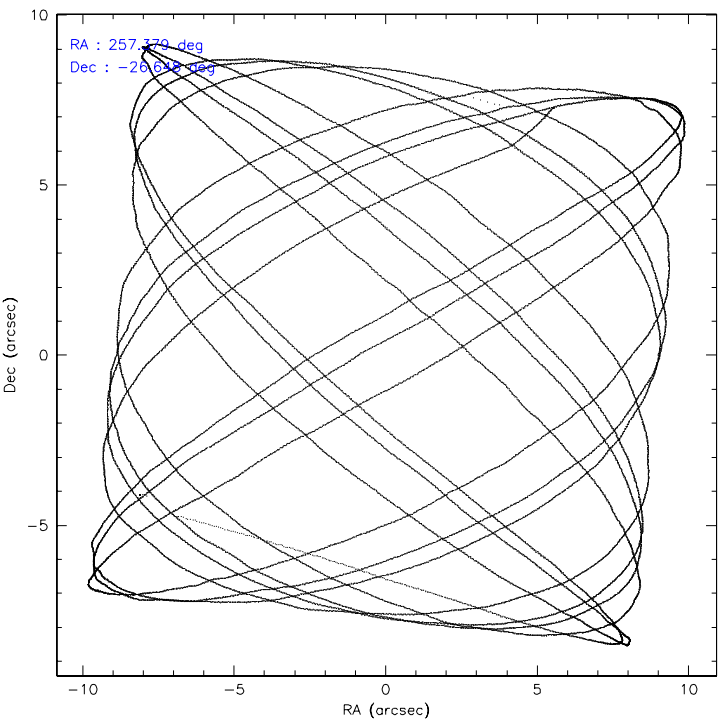
	ccd 2	ccd 3	ccd 5	ccd 6	ccd 7	ccd 8
level 1 events	54702	66506	137867	71915	190318	861316
rejected events	2830	3164	10536	3758	11972	27106
rejected %	5%	4%	7%	5%	6%	3%

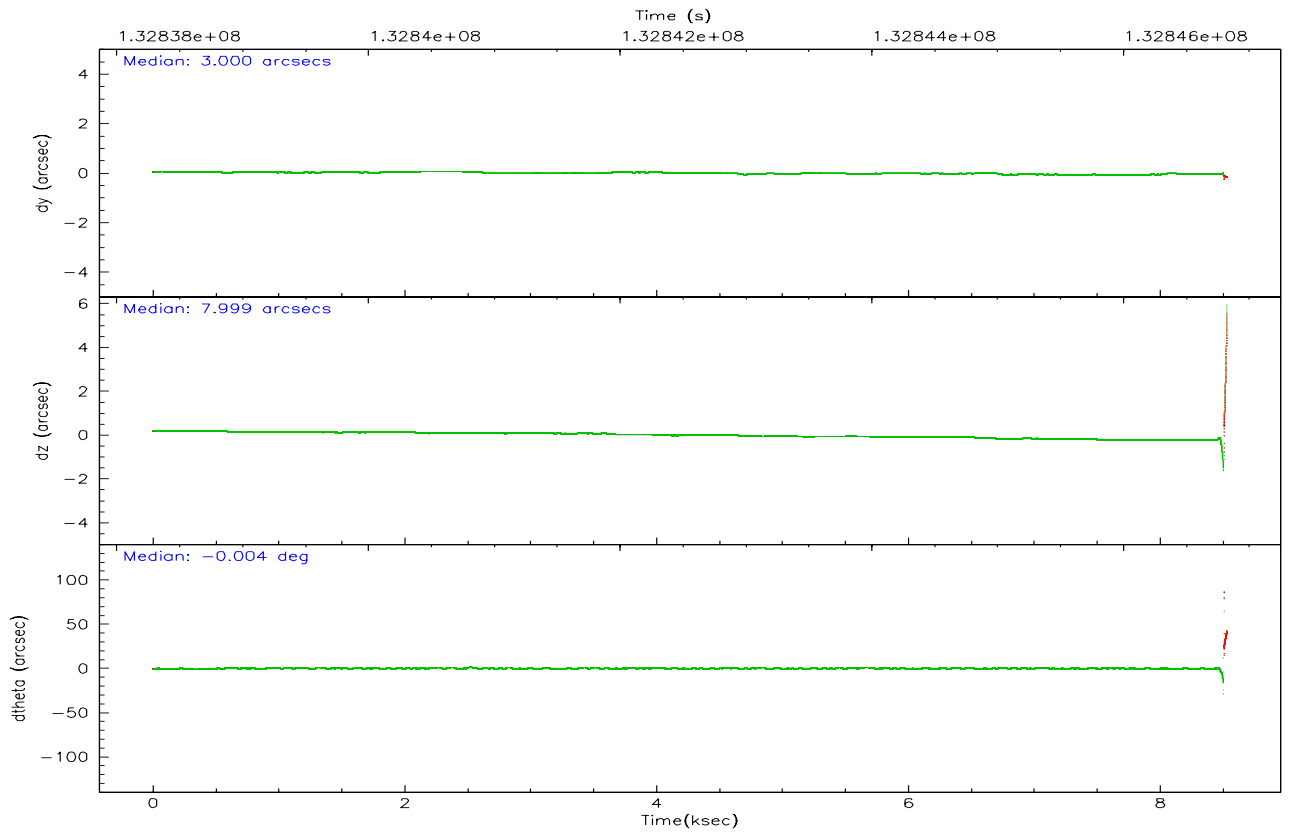
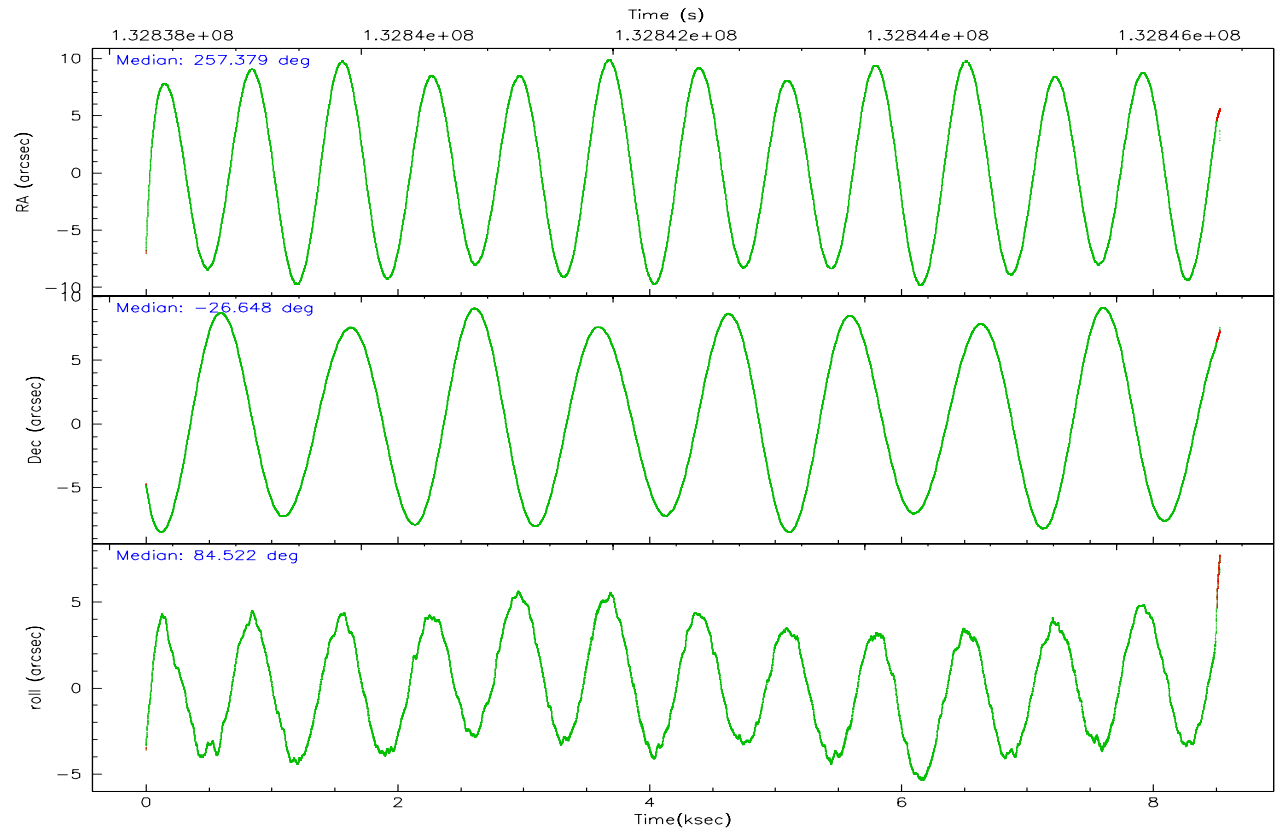
	ccd 2	ccd 3	ccd 5	ccd 6	ccd 7	ccd 8
grade 0 events	4826	4823	20649	15554	31465	360659
	8%	7%	14%	21%	16%	41%
grade 1 events	39	56	725	175	624	3660
	0%	0%	0%	0%	0%	0%
grade 2 events	38208	49454	38947	44614	53164	72852
	69%	74%	28%	62%	27%	8%
grade 3 events	1354	1667	12746	1349	16468	186696
	2%	2%	9%	1%	8%	21%
grade 4 events	1460	1500	12137	1418	16200	174096
	2%	2%	8%	1%	8%	20%
grade 5 events	1968	2106	7670	2427	8296	8093
	3%	3%	5%	3%	4%	0%
grade 6 events	6847	6900	44993	6378	64101	55260
	12%	10%	32%	8%	33%	6%
grade 7 events	0	0	0	0	0	0
	0%	0%	0%	0%	0%	0%

2.2 Compared Parameters

Parameter	Planned	Actual	Parameter	Planned	Actual
Instrument	ACIS	ACIS	Obspar format version number	6	6
Detector	ACIS-235678	ACIS-235678	Obspar file type	PREDICTED	ACTUAL
Grating	NONE	NONE	Obspar update status	NONE	UPDATED
Data mode	CC33_FAINT	CC33_FAINT	On-chip summing requested	N	N
Observation mode	POINTING	POINTING	Subarray requested	NONE	NONE
Pointing RA	257.391763	257.3787420341128	Alternating exposures requested	N	N
Pointing Dec	-26.672796	-26.64819606684486	Primary exposure time	0.000000	0
Pointing Roll	84.379120	84.52990982191922			
SIM focus pos (mm)	-0.684267	-0.6828225247311905			
SIM defocus (mm)	0	0.001444936568705701			
SIM translation stage pos (mm)	-190.132523	-190.1400660498719			
SIM translation stage offset (mm)	0	0.00754346686406393			
Observation start time	132839225.184000	132837895.32839			
Observation start date	2002-03-18T11:46:01	2002-03-18T11:24:55			
Observation end time	132854225.184000	132846844.09126			
Observation end date	2002-03-18T15:56:01	2002-03-18T13:54:04			
Read mode	CONTINUOUS	CONTINUOUS			

2.3 Aspect



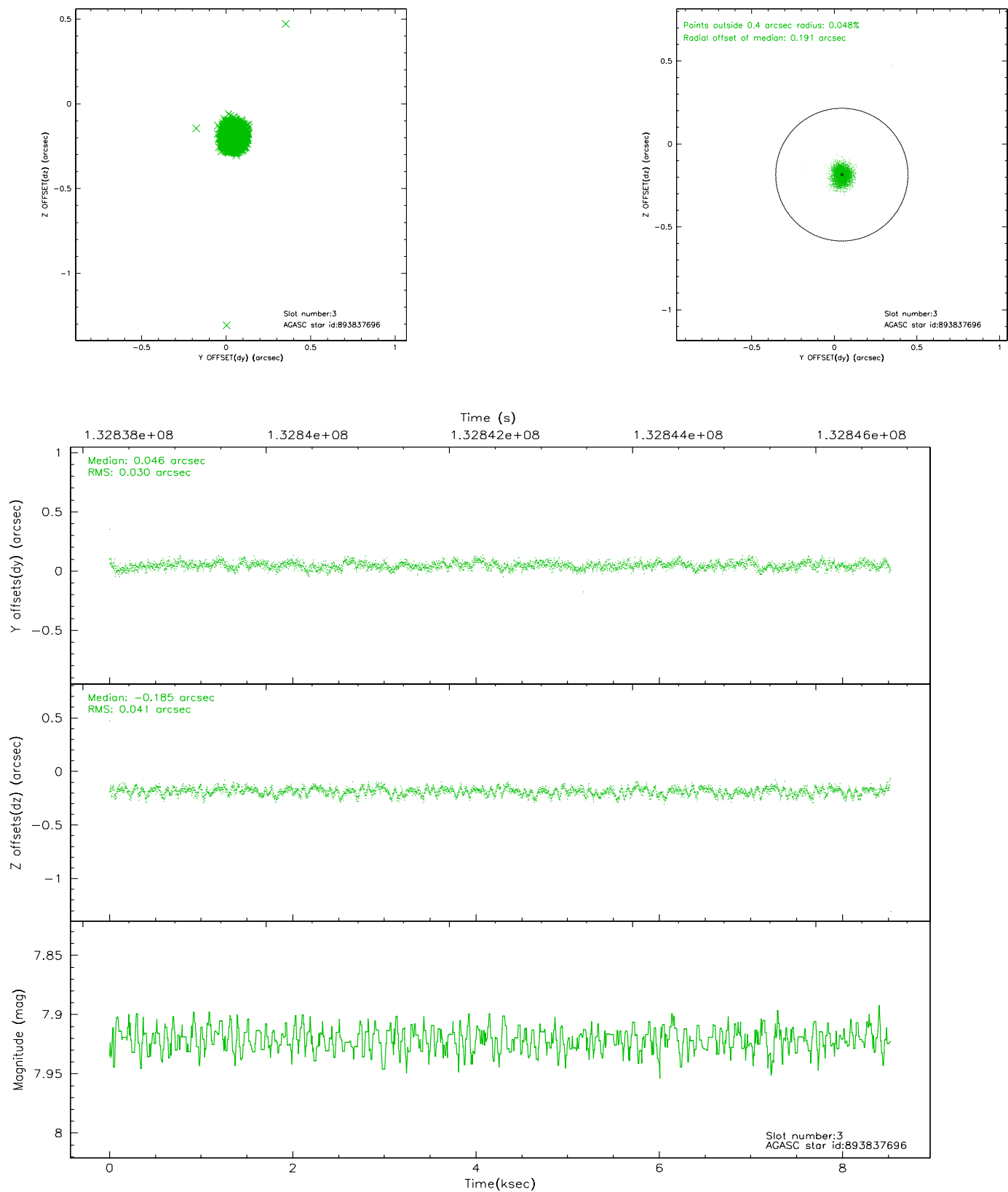


Slot Statistics

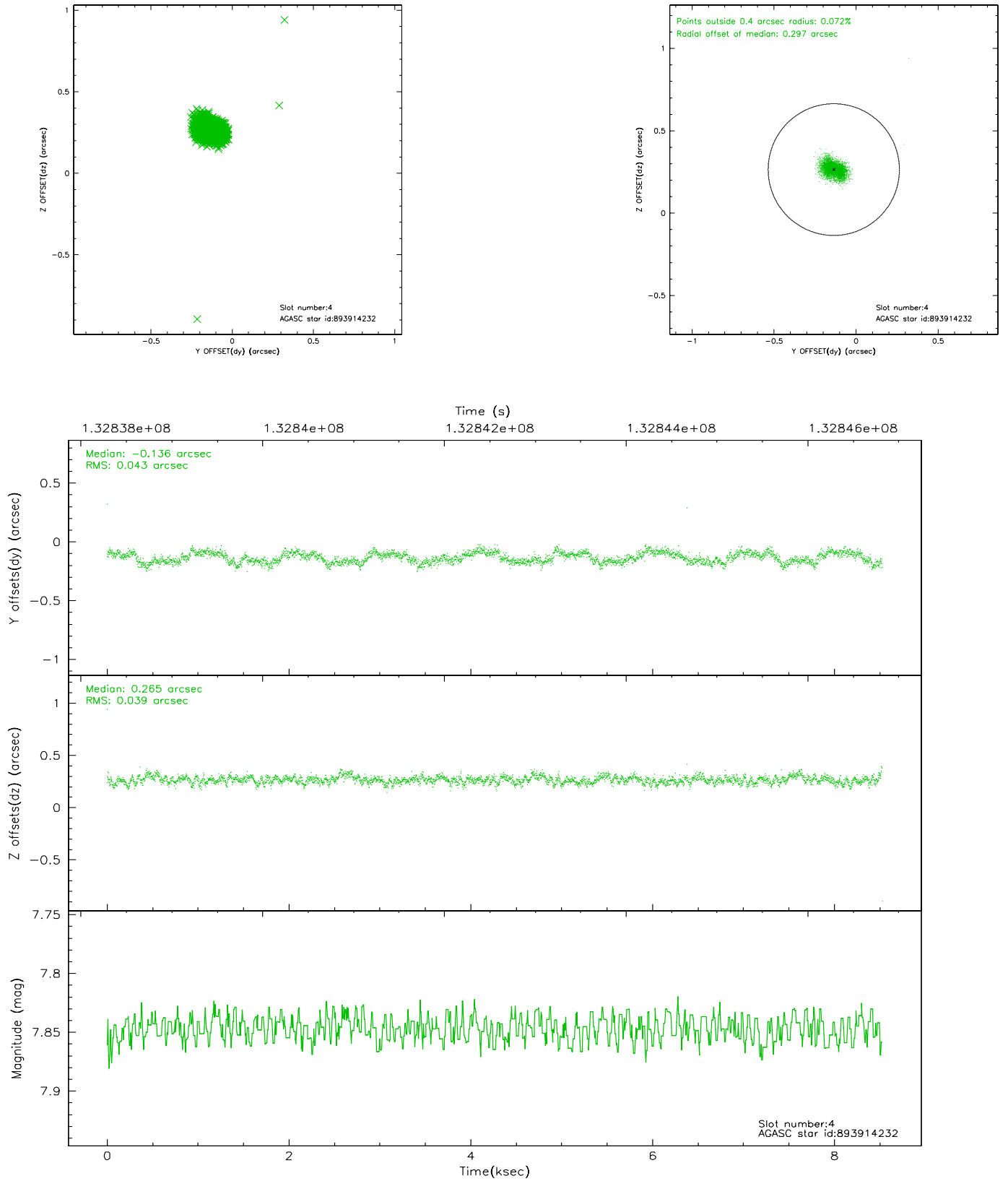
slot	status	id	mag	n_pts	med_dy	med_dz	dr1	dr2	ra	dec	mean_y	mean_z
0	FID	ACIS-S-2	7.11	2067	0.006	0.020	0.007	0.013	0.000000	0.000000	-755.65	-1729.16
1	FID	ACIS-S-4	7.20	2066	-0.079	-0.008	0.006	0.010	0.000000	0.000000	2157.26	178.60
2	FID	ACIS-S-5	7.24	2067	0.042	-0.003	0.007	0.013	0.000000	0.000000	-1807.60	173.04
3	GUIDE	893837696	7.92	4152	0.046	-0.185	0.049	0.079	257.277958	-26.423720	856.91	452.19
4	GUIDE	893914232	7.85	4151	-0.136	0.265	0.058	0.091	257.948003	-26.439334	1009.15	-1702.65
5	GUIDE	893913752	8.70	4152	0.188	0.094	0.055	0.091	257.717246	-26.451689	894.81	-967.08
6	GUIDE	893837592	9.30	4152	-0.061	-0.202	0.080	0.130	256.924631	-26.316123	1128.08	1624.69
7	GUIDE	893835576	8.92	4149	-0.038	0.033	0.089	0.141	257.152526	-26.836742	-662.56	706.57

2.4 Star Slots

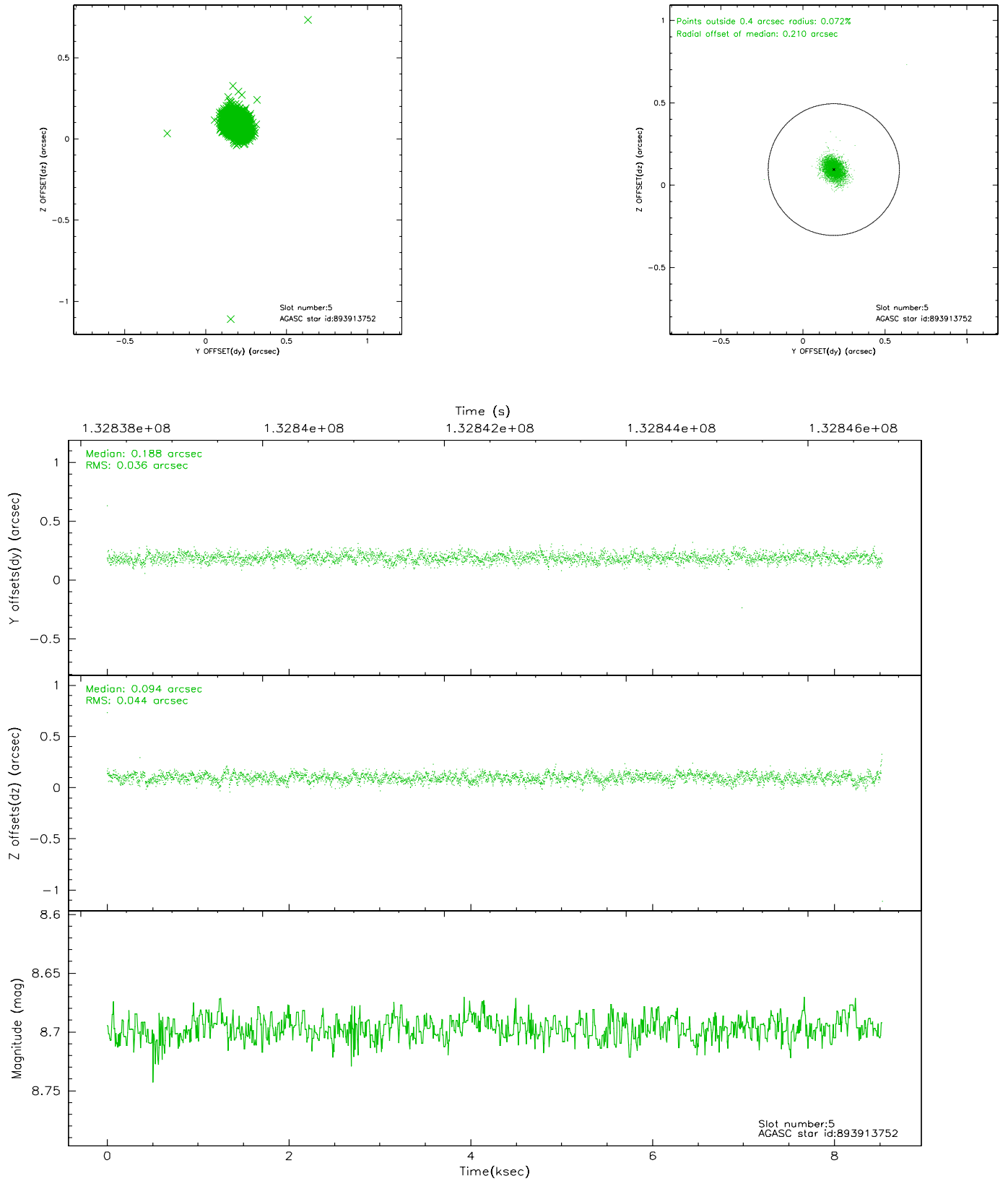
2.4.1 Slot 3



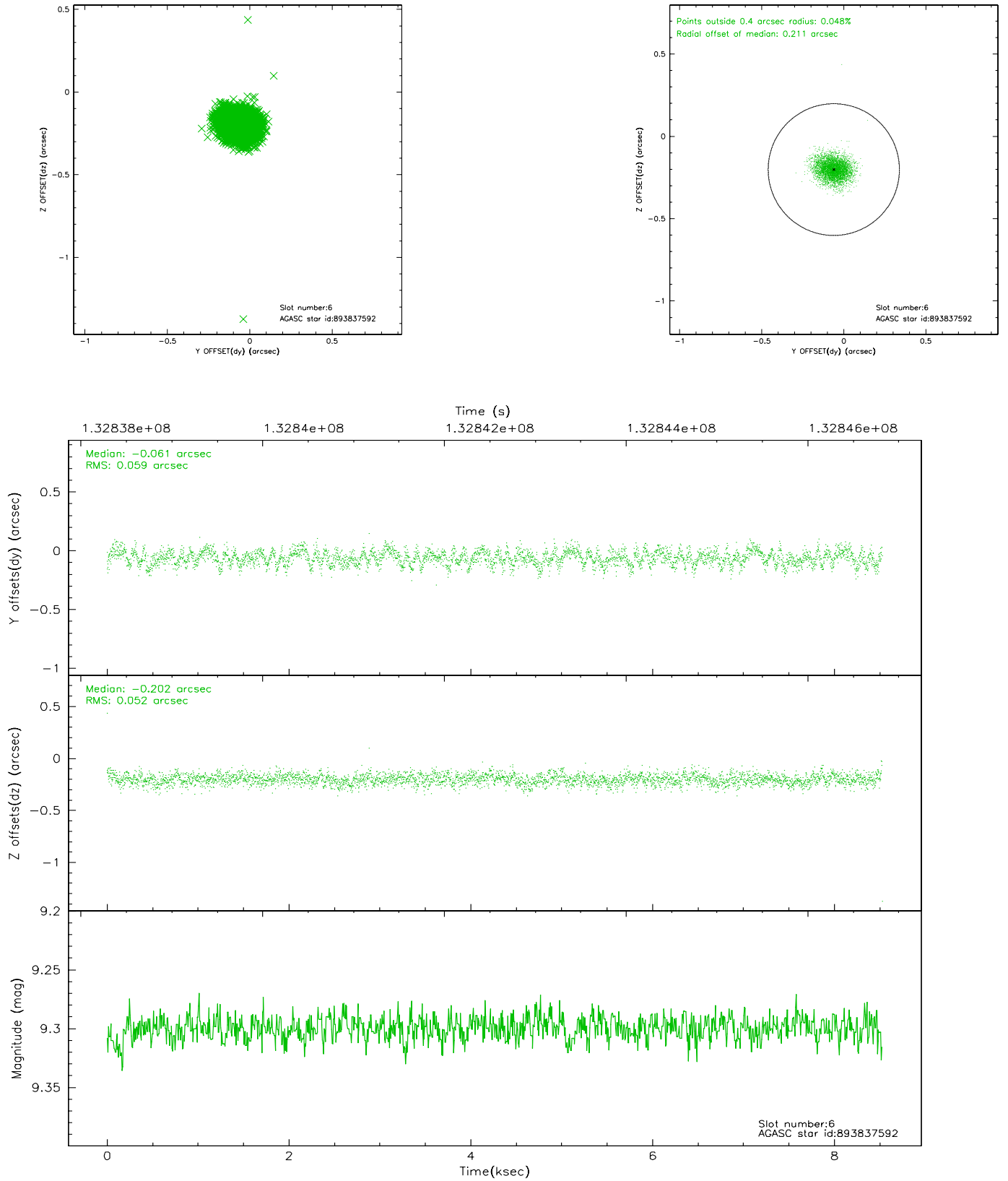
2.4.2 Slot 4



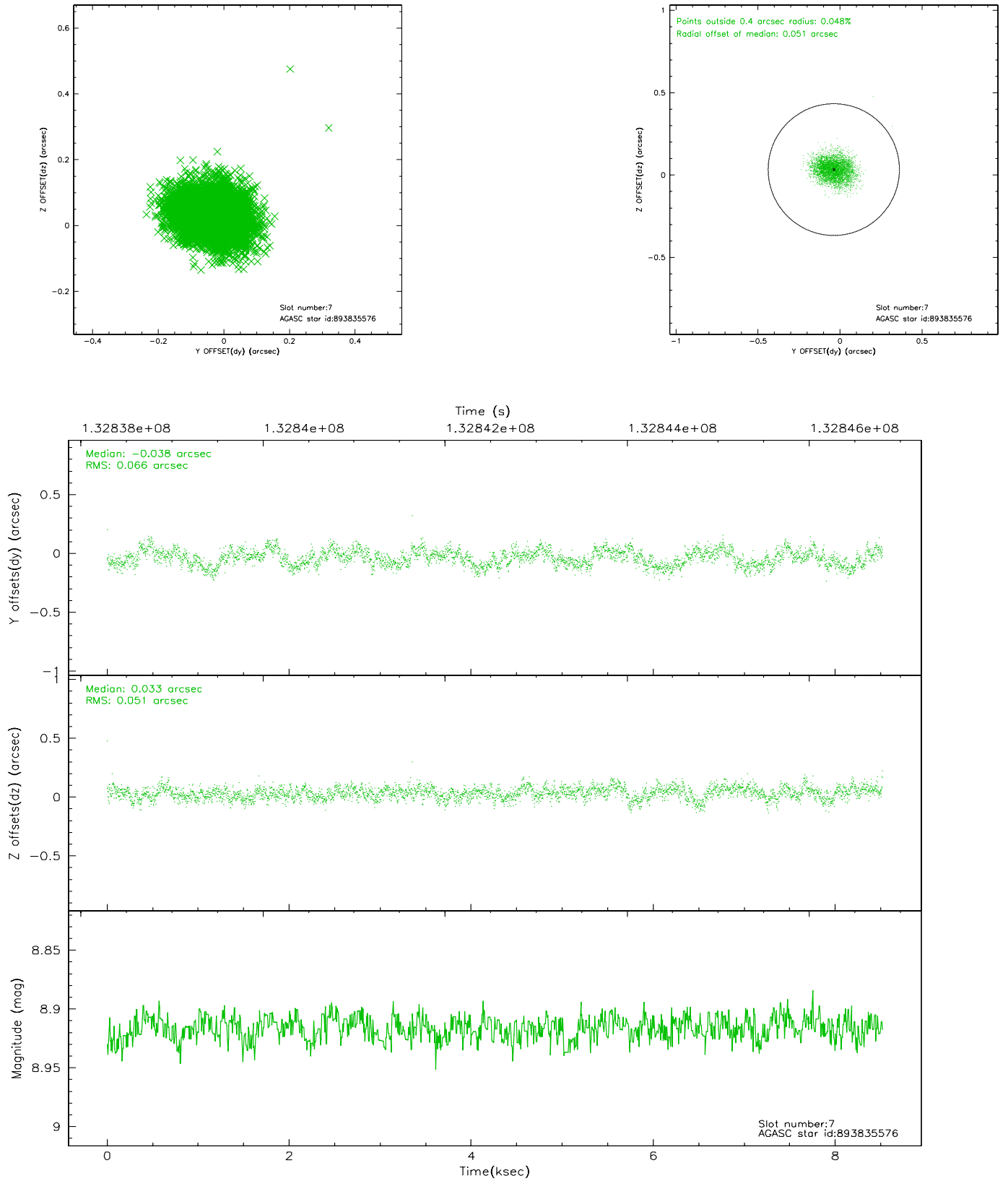
2.4.3 Slot 5



2.4.4 Slot 6

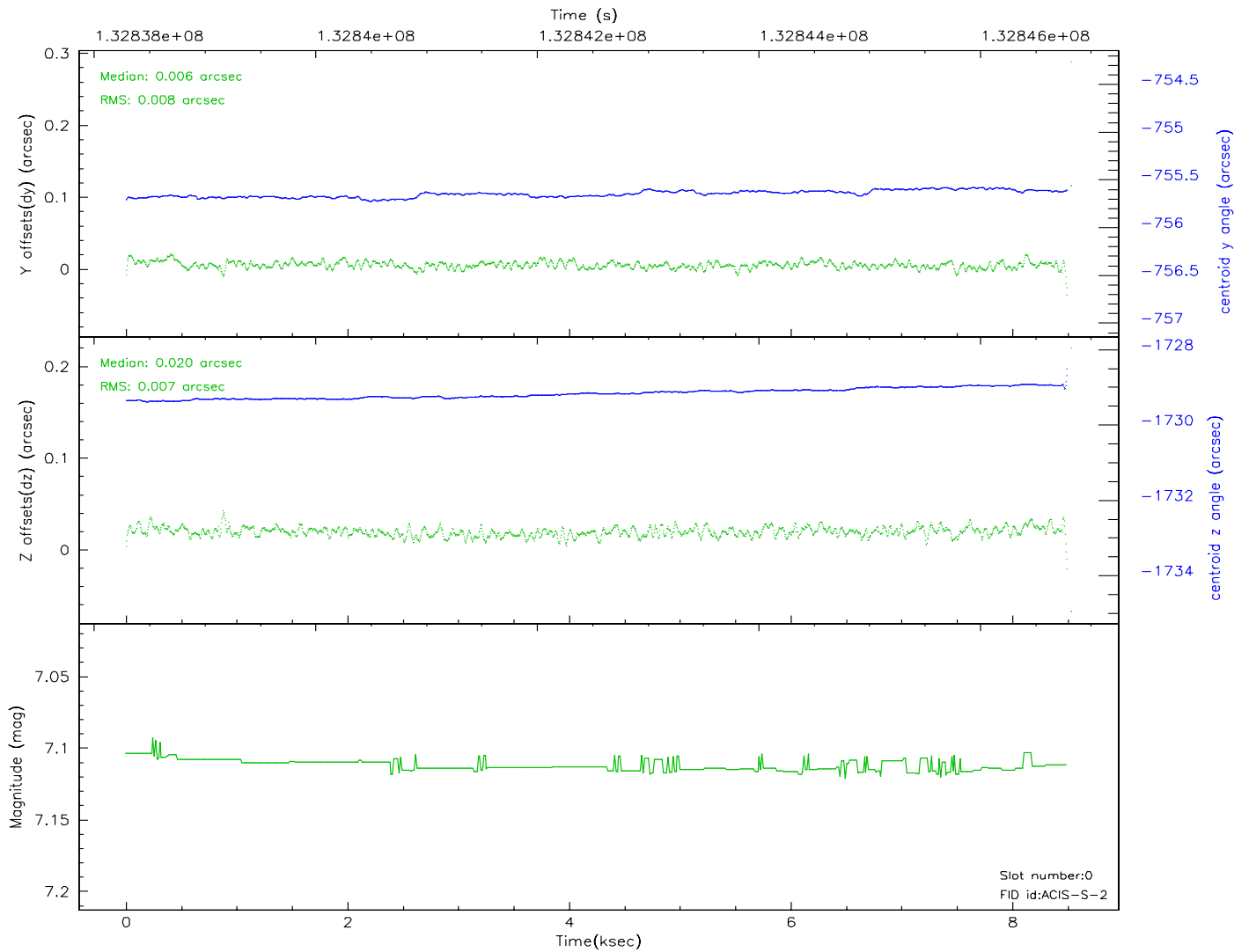
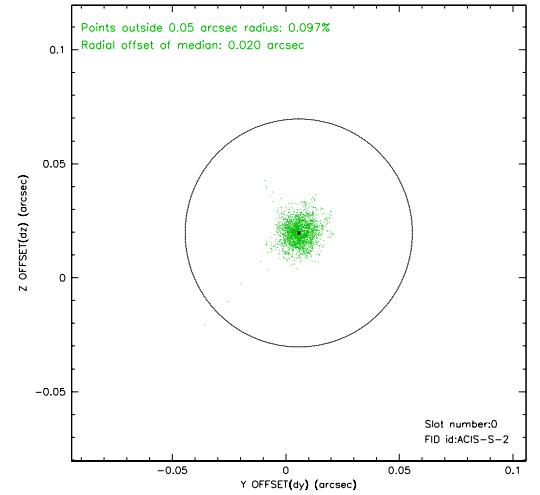
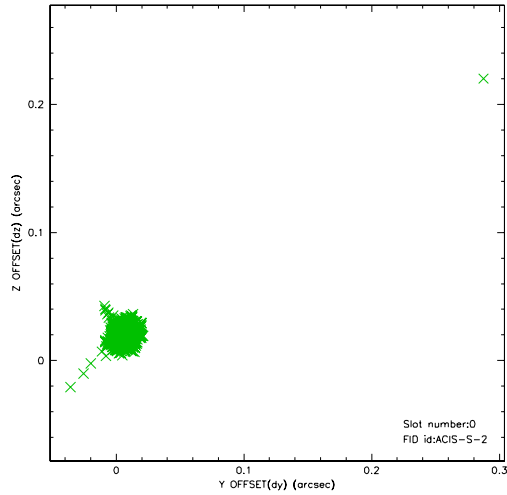


2.4.5 Slot 7

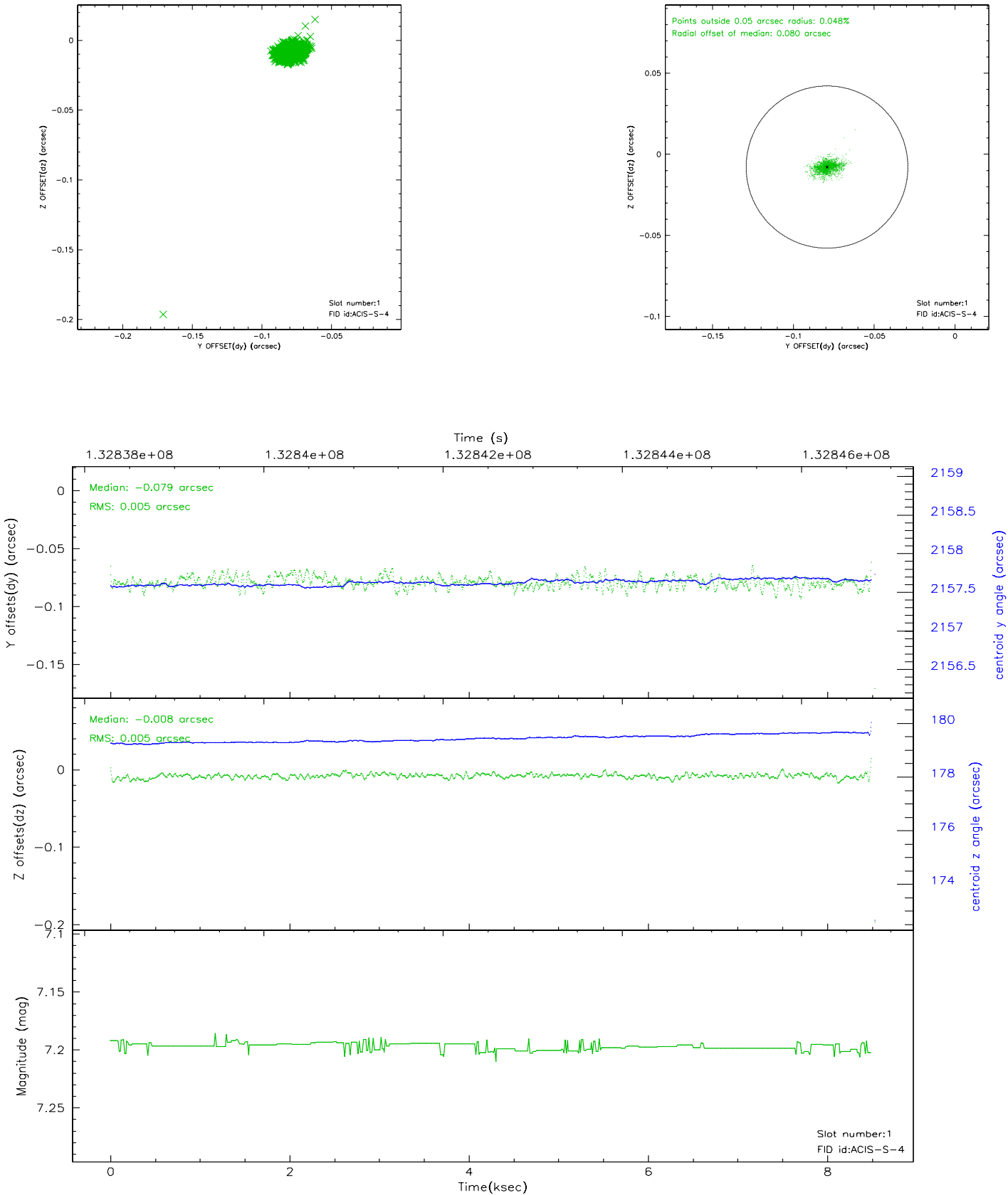


2.5 FID Slots

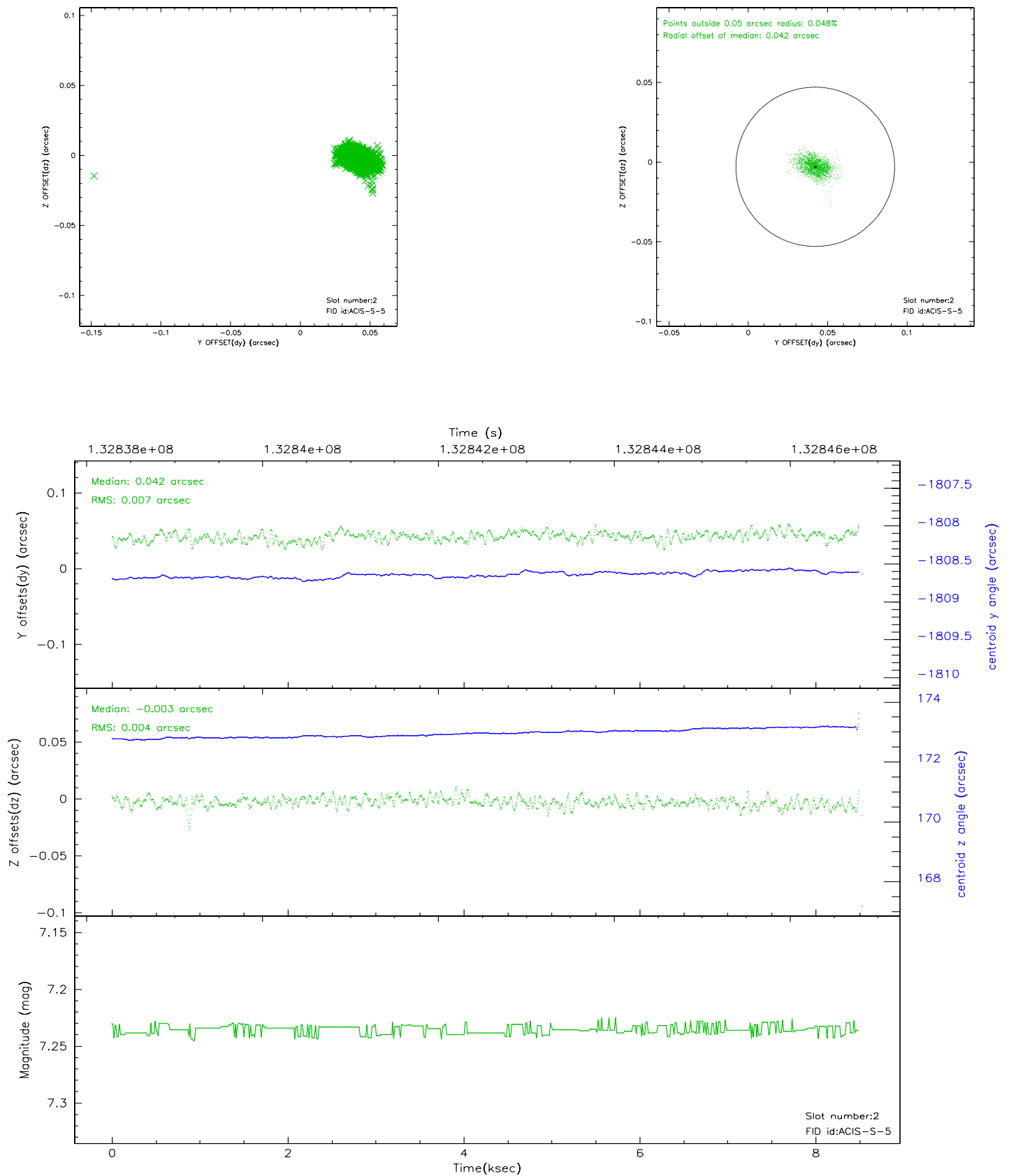
2.5.1 Slot 0



2.5.2 Slot 1



2.5.3 Slot 2



A Summary

A.1 Status

V&V Scientist	David Huenemoerder
V&V Date (YYYY-MM-DD)	2006.09.08
V&V Edition	1
V&V Disposition and Status	OK
V&V Charge Time	8.477

A.2 Comments

Observation cut short due to high radiation. S1 looks clean and could be used for background for S3. Background increases significantly about 6500s into the observation.

The source events on S3 look reasonable (aspect corrected); note that the source dithers across a node boundary, which will introduce spurious periodic features into the light curve.

Chip S4 has elevated 'streaking' with dropped frames. Running destreak will clean up data.

Comments for Obi 0
SIM dz has 163 discontinuities > 0.200 arcsec
SIM dz drift > 5.000 arcsec

Charge time:
Charge time for this ObsId remains at previous value of 8.477 ks.