

# V&V Reference Report

## L2 ASCDS Version : 7.6.8.1

Observation 3313 - L2 Version 001  
Chandra X-Ray Center

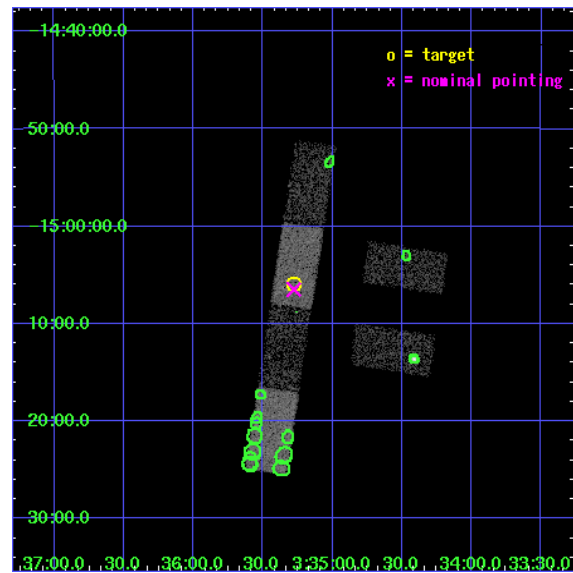
L2 Processing Date : Sep 2 2006

## Contents

<b>1</b>	<b>Front</b>	<b>2</b>
<b>2</b>	<b>OBI</b>	<b>3</b>
2.1	OBI . . . . .	3
2.1.1	Images . . . . .	3
2.1.2	Bias . . . . .	3
2.1.3	Parameters . . . . .	4
2.1.4	Events . . . . .	4
2.2	Compared Parameters . . . . .	5
2.3	Aspect . . . . .	6
2.4	Star Slots . . . . .	9
2.4.1	Slot 3 . . . . .	9
2.4.2	Slot 4 . . . . .	10
2.4.3	Slot 5 . . . . .	11
2.4.4	Slot 6 . . . . .	12
2.4.5	Slot 7 . . . . .	13
2.5	FID Slots . . . . .	14
2.5.1	Slot 0 . . . . .	14
2.5.2	Slot 1 . . . . .	15
2.5.3	Slot 2 . . . . .	16
<b>3</b>	<b>Point Sources</b>	<b>17</b>
<b>A</b>	<b>Summary</b>	<b>18</b>
A.1	Status . . . . .	18
A.2	Comments . . . . .	18

# 1 Front

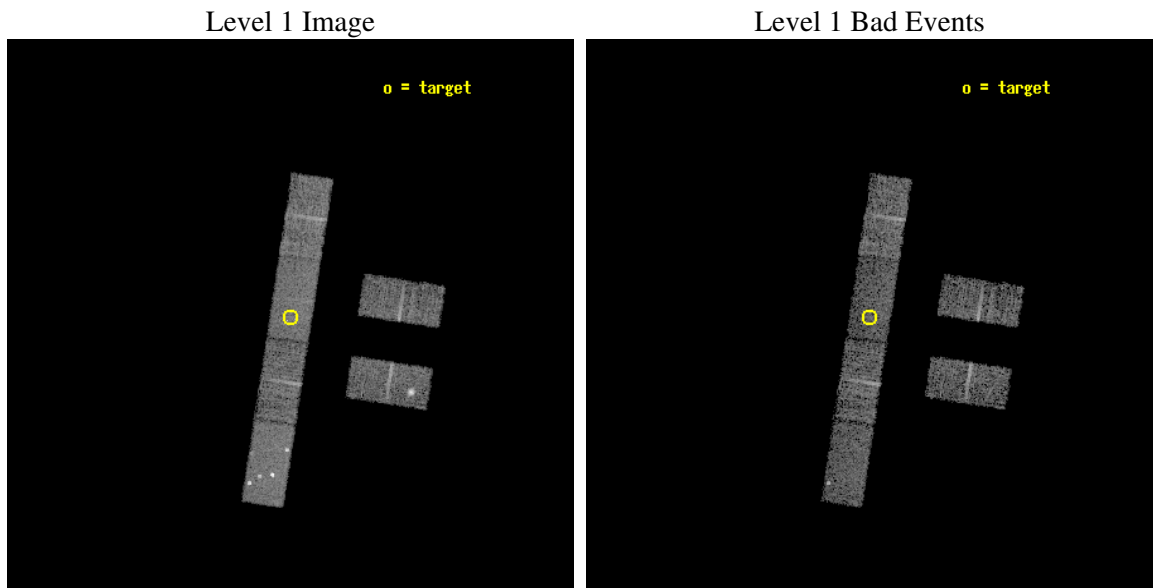
seq_num	900152
obs_id	3313
title	THE SHEEP SURVEY: WHAT KIND OF OBJECTS MAKE THE X-RAY BACKGROUND?
observer	Professor Kirpal Nandra
object	AX J0335.2-1505
dtcycle	0
cycle	P
ra_targ	53.819583
dec_targ	-15.098611
ra_nom	53.819319841337
dec_nom	-15.108305940247
roll_nom	278.76128249756
revision	2
ontime	5065.1999916136
livetime	4952.2878291099
ontime2	5065.1999916136
ontime3	5065.1999916136
ontime5	5065.1999916136
ontime6	5065.1999916136
ontime7	5065.1999916136
ontime8	5065.1999916136
l2events	28531



## 2 OBI

### 2.1 OBI

#### 2.1.1 Images

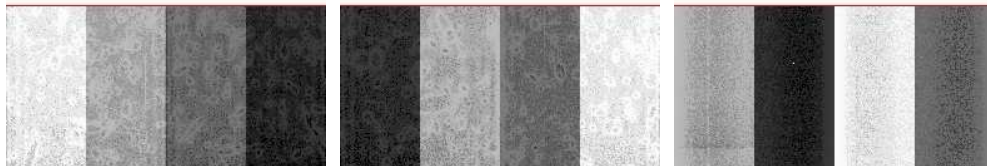


#### 2.1.2 Bias

Chip 2

Chip 3

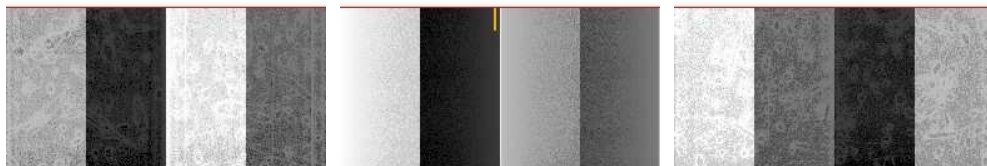
Chip 5



Chip 6

Chip 7

Chip 8



### 2.1.3 Parameters

obi_num	0
ascdsver	7.6.8.1
caldsver	3.2.3
date	2006-09-02T13:19:39
revision	2

sched_exp_time	4900.000000
ontime	6408.5782488734
ontime2	6408.5782488734
ontime3	6408.5782488734
ontime5	6408.5782488734
ontime6	6408.5782488734
ontime7	6408.5782488734
ontime8	6408.5782488734
l1events	167572

### 2.1.4 Events

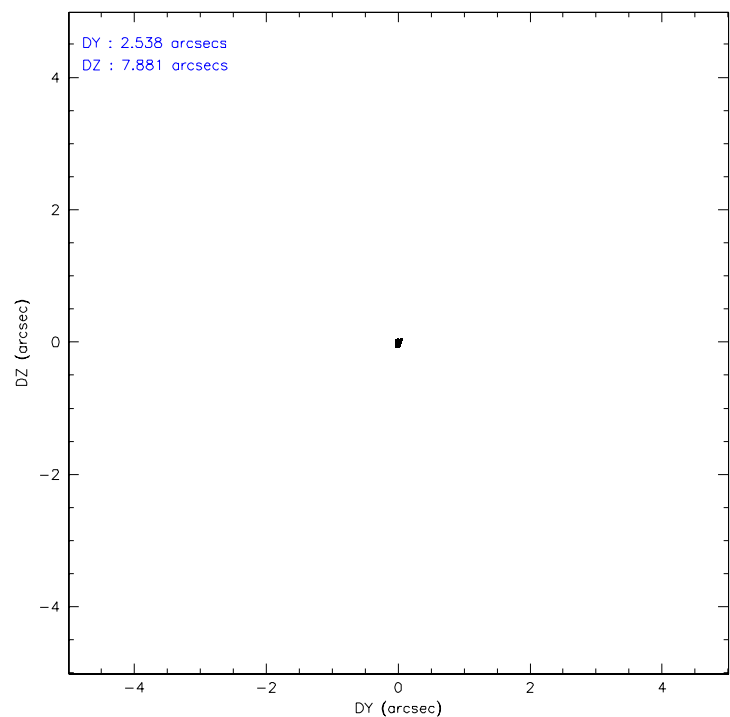
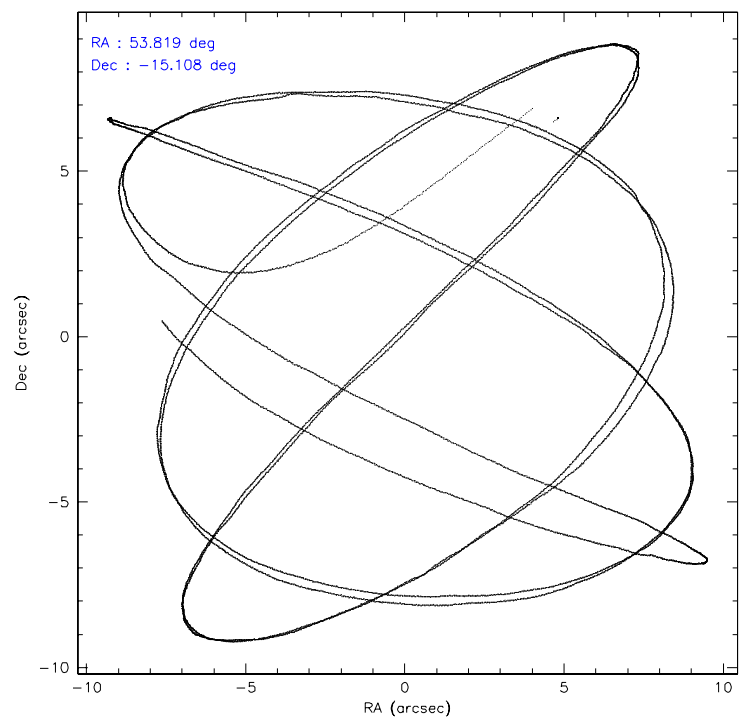
	ccd 2	ccd 3	ccd 5	ccd 6	ccd 7	ccd 8
level 1 events	25577	22287	36949	23470	28584	30705
rejected events	21261	20233	21884	21351	19285	25861
rejected %	83%	90%	59%	90%	67%	84%

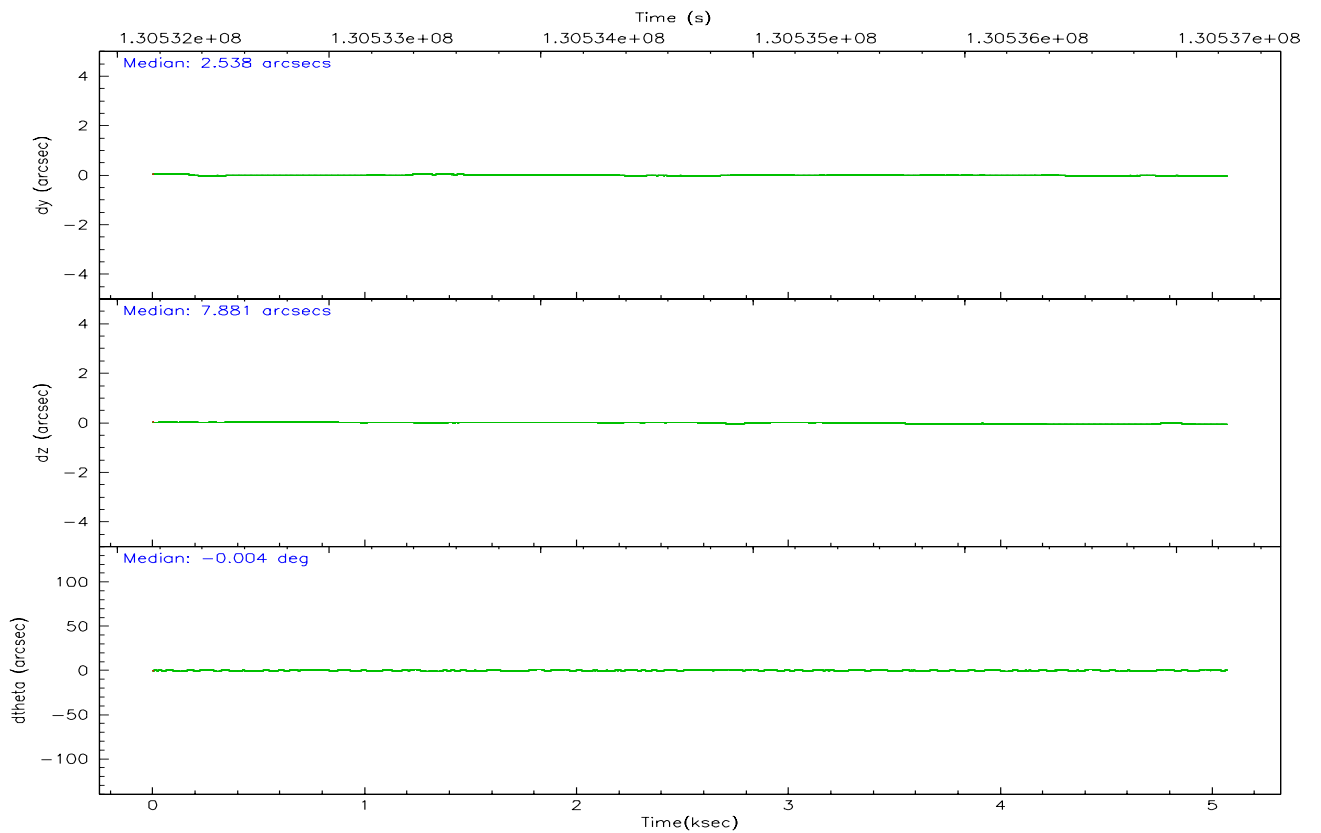
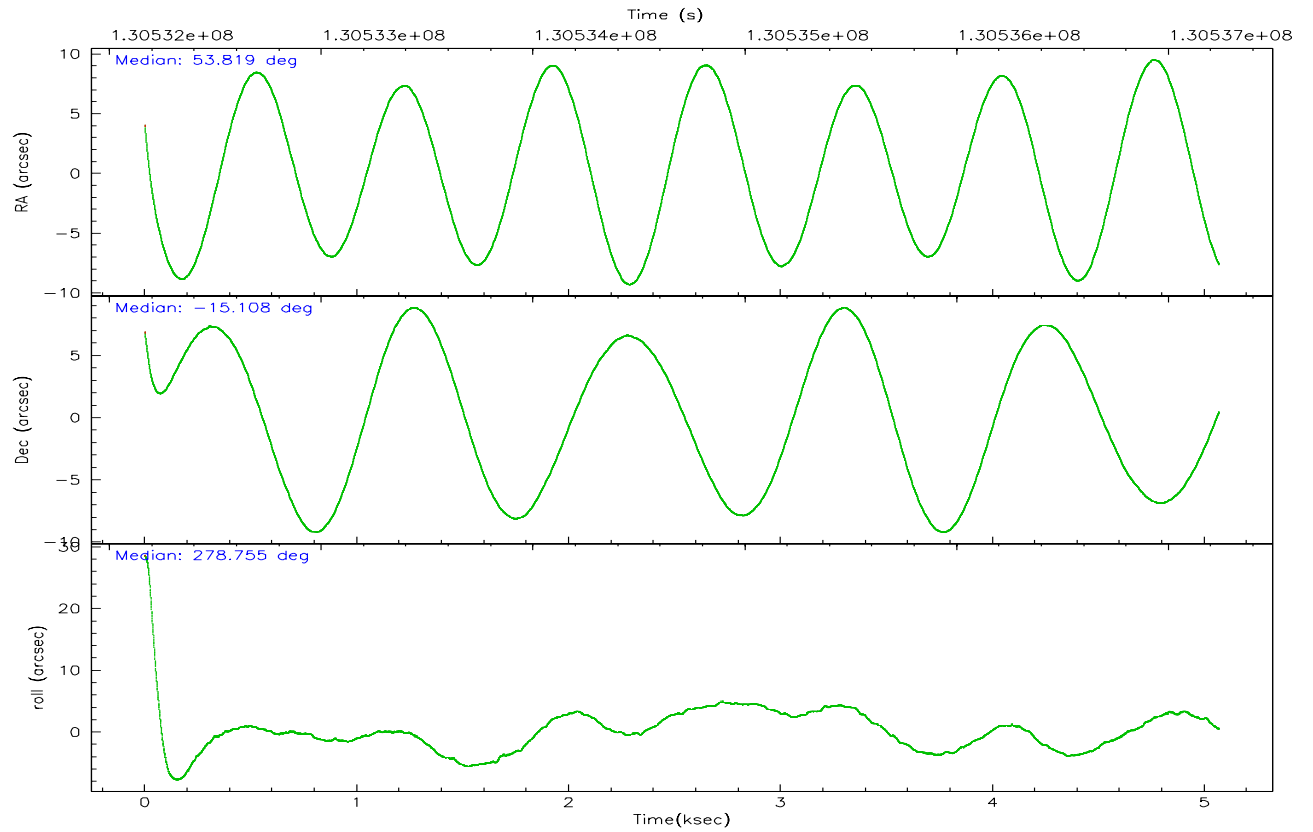
	ccd 2	ccd 3	ccd 5	ccd 6	ccd 7	ccd 8
grade 0 events	2941	1073	5447	1028	855	1901
	11%	4%	14%	4%	2%	6%
grade 1 events	13	12	37	9	21	10
	0%	0%	0%	0%	0%	0%
grade 2 events	785	468	5134	531	2814	1352
	3%	2%	13%	2%	9%	4%
grade 3 events	358	268	411	312	762	700
	1%	1%	1%	1%	2%	2%
grade 4 events	325	310	357	301	738	689
	1%	1%	0%	1%	2%	2%
grade 5 events	817	891	1826	914	2067	1190
	3%	3%	4%	3%	7%	3%
grade 6 events	537	452	7861	475	6466	1670
	2%	2%	21%	2%	22%	5%
grade 7 events	19801	18813	15876	19900	14861	23193
	77%	84%	42%	84%	51%	75%

## 2.2 Compared Parameters

Parameter	Planned	Actual	Parameter	Planned	Actual
Instrument	ACIS	ACIS	Obspar format version number	6	6
Detector	ACIS-235678	ACIS-235678	Obspar file type	PREDICTED	ACTUAL
Grating	NONE	NONE	Obspar update status	NONE	UPDATED
Data mode	FAINT	FAINT	On-chip summing requested	N	N
Observation mode	POINTING	POINTING	Subarray requested	1/2	1/2
Pointing RA	53.801391	53.81931984133703	Subarray start row	0	257
Pointing Dec	-15.087273	-15.10830594024744	Subarray row count	1024	512
Pointing Roll	278.599915	278.7612824975565	Alternating exposures requested	N	N
SIM focus pos (mm)	-0.684267	-0.6828225247311905	Primary exposure time	0.000000	1.8
SIM defocus (mm)	0	0.001444936568705701			
SIM translation stage pos (mm)	-190.132523	-190.1425803651734			
SIM translation stage offset (mm)	0	0.01005778216563158			
Observation start time	130532339.184000	130530819.59756			
Observation start date	2002-02-19T18:57:55	2002-02-19T18:33:39			
Observation end time	130537239.184000	130537782.42284			
Observation end date	2002-02-19T20:19:35	2002-02-19T20:29:42			
Read mode	TIMED	TIMED			

## 2.3 Aspect





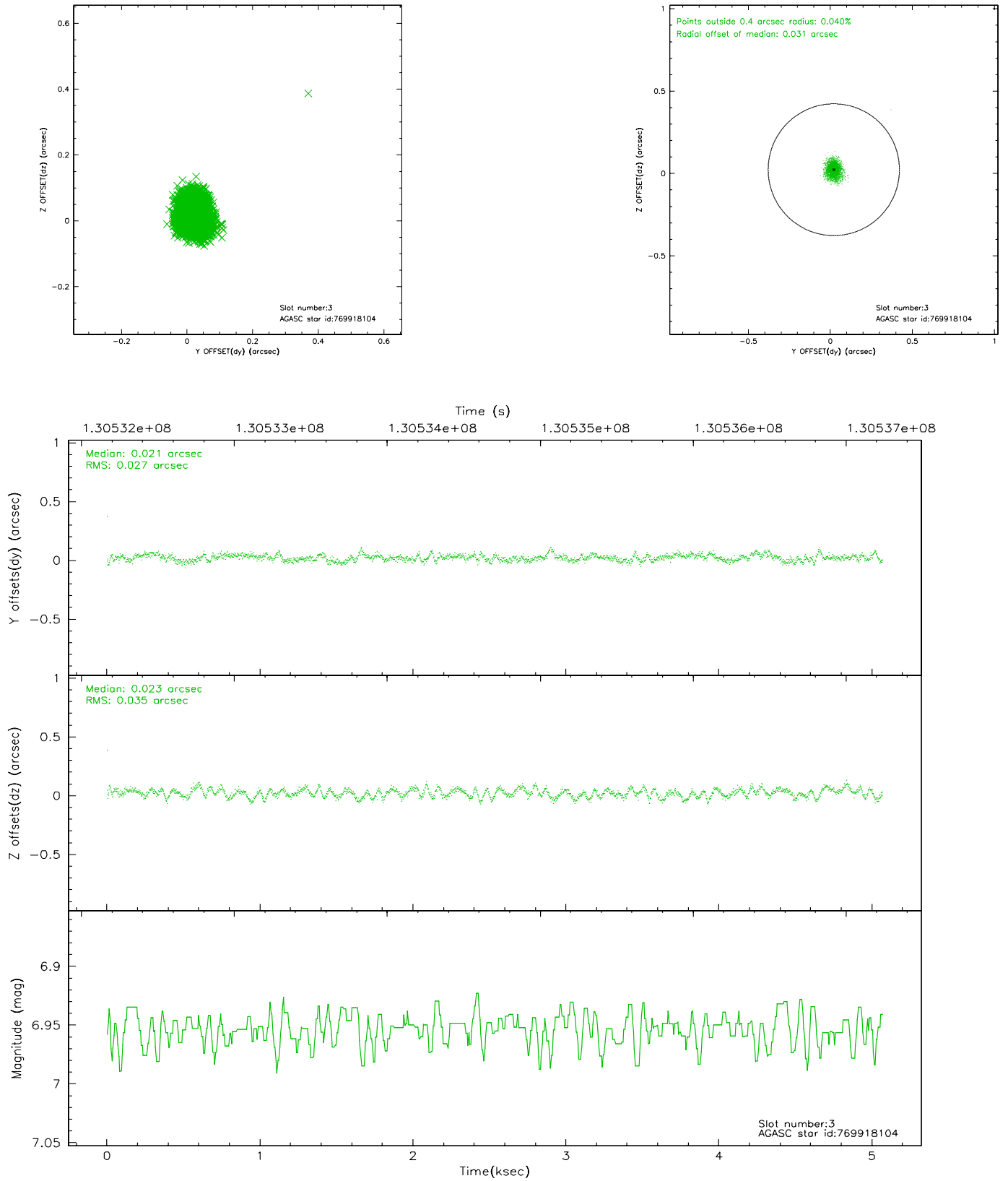
### Slot Statistics

slot	status	id	mag	n_pts	med_dy	med_dz	dr1	dr2	ra	dec	mean_y	mean_z
0	FID	ACIS-S-2	7.11	1237	0.009	0.032	0.006	0.010	0.000000	0.000000	-755.17	-1728.97
1	FID	ACIS-S-4	7.19	1237	-0.106	-0.013	0.005	0.009	0.000000	0.000000	2157.46	178.21
2	FID	ACIS-S-5	7.23	1237	0.066	-0.010	0.006	0.010	0.000000	0.000000	-1806.40	173.27
3	GUIDE	769918104	6.95	2474	0.021	0.023	0.046	0.073	54.439345	-15.484930	1749.50	1973.50
4	GUIDE	769787208	8.33	2474	0.021	0.000	0.063	0.103	53.303878	-15.548215	1385.57	-1954.22
5	GUIDE	694947000	7.83	2474	-0.085	-0.016	0.055	0.086	53.583820	-14.710453	-1453.73	-547.86
6	GUIDE	695869464	9.62	2474	0.019	-0.022	0.089	0.143	53.839613	-14.822210	-924.10	273.19
7	GUIDE	695869632	9.60	2471	0.022	0.016	0.100	0.164	53.983344	-14.771263	-1030.36	795.74

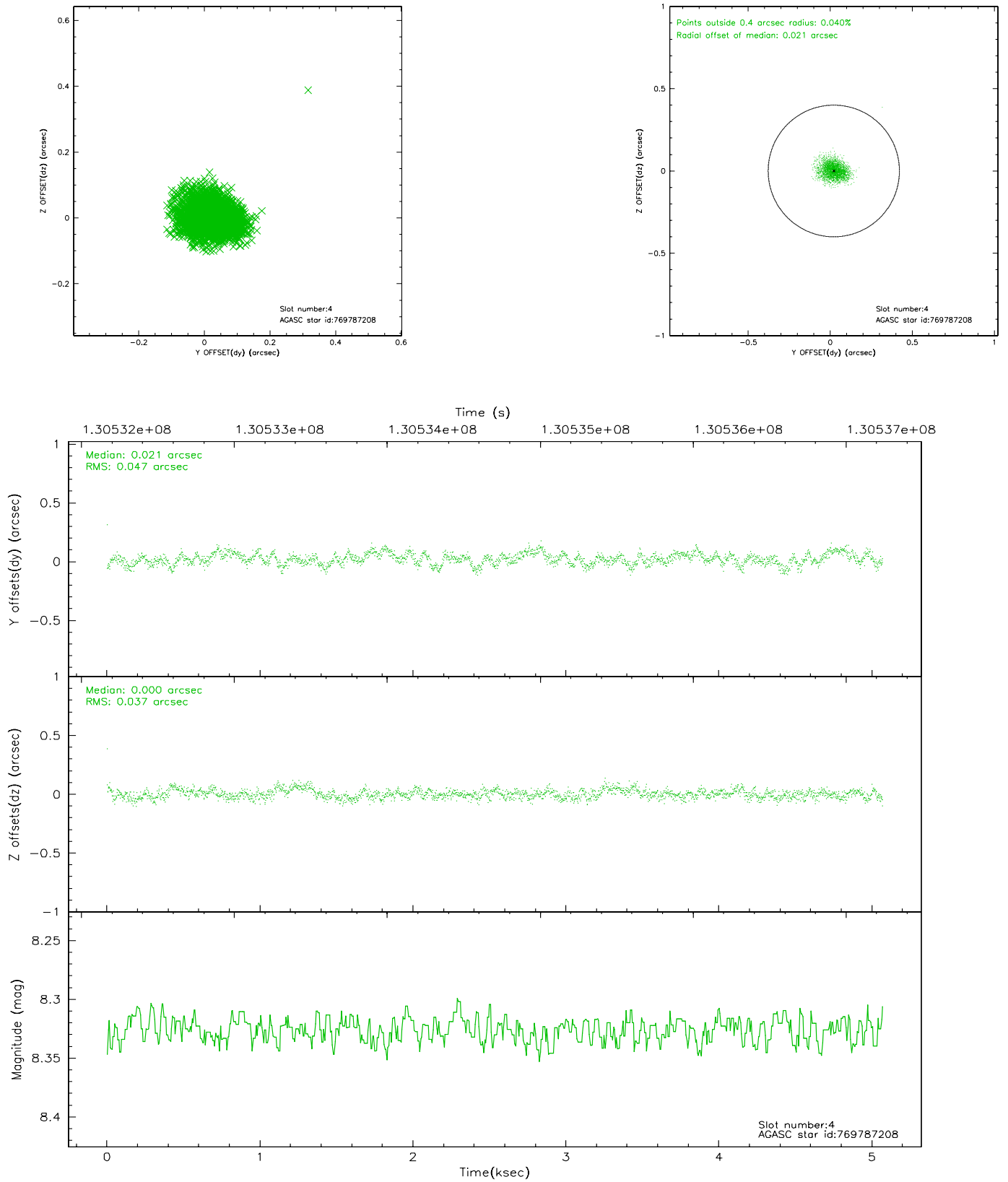


## 2.4 Star Slots

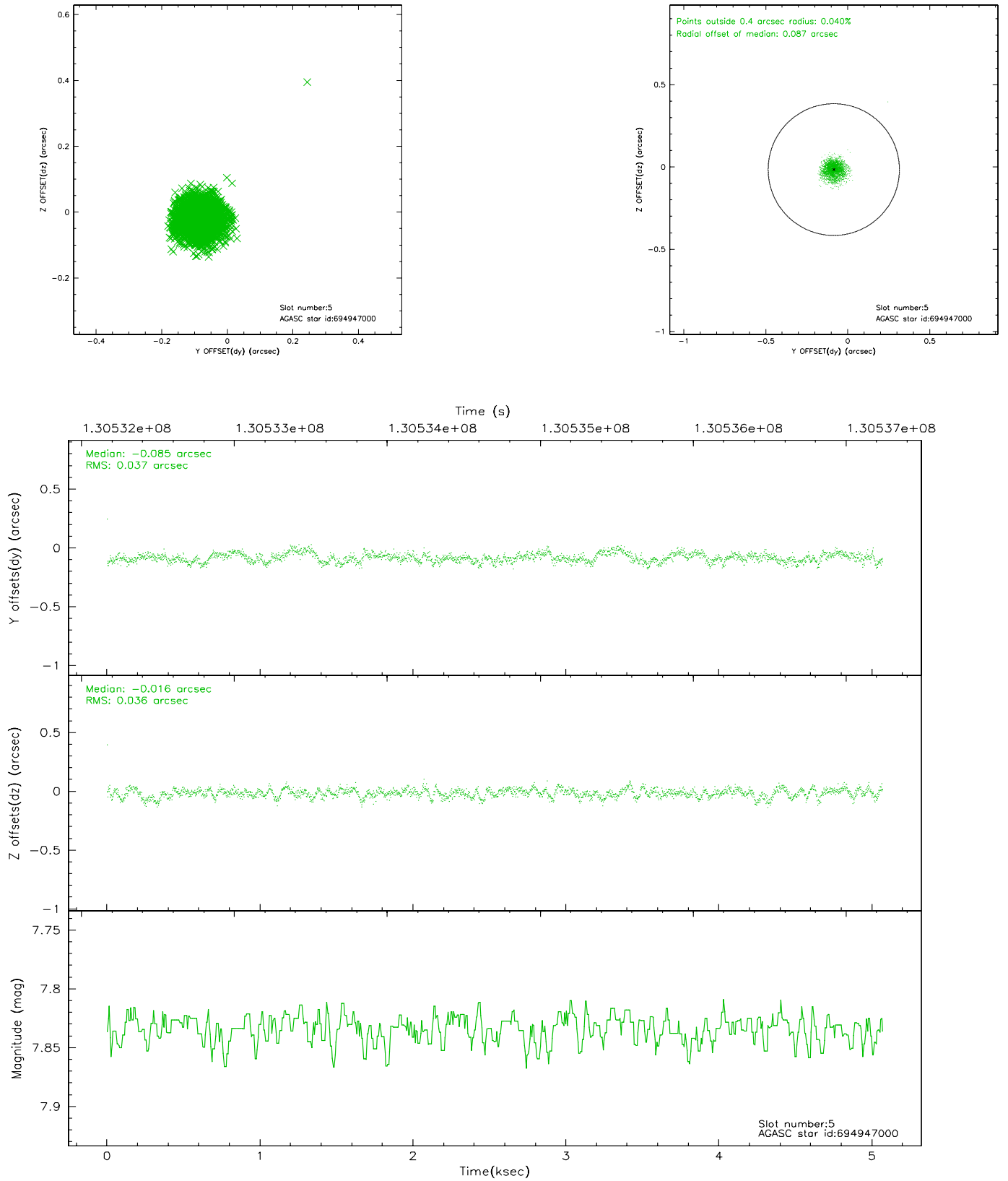
### 2.4.1 Slot 3



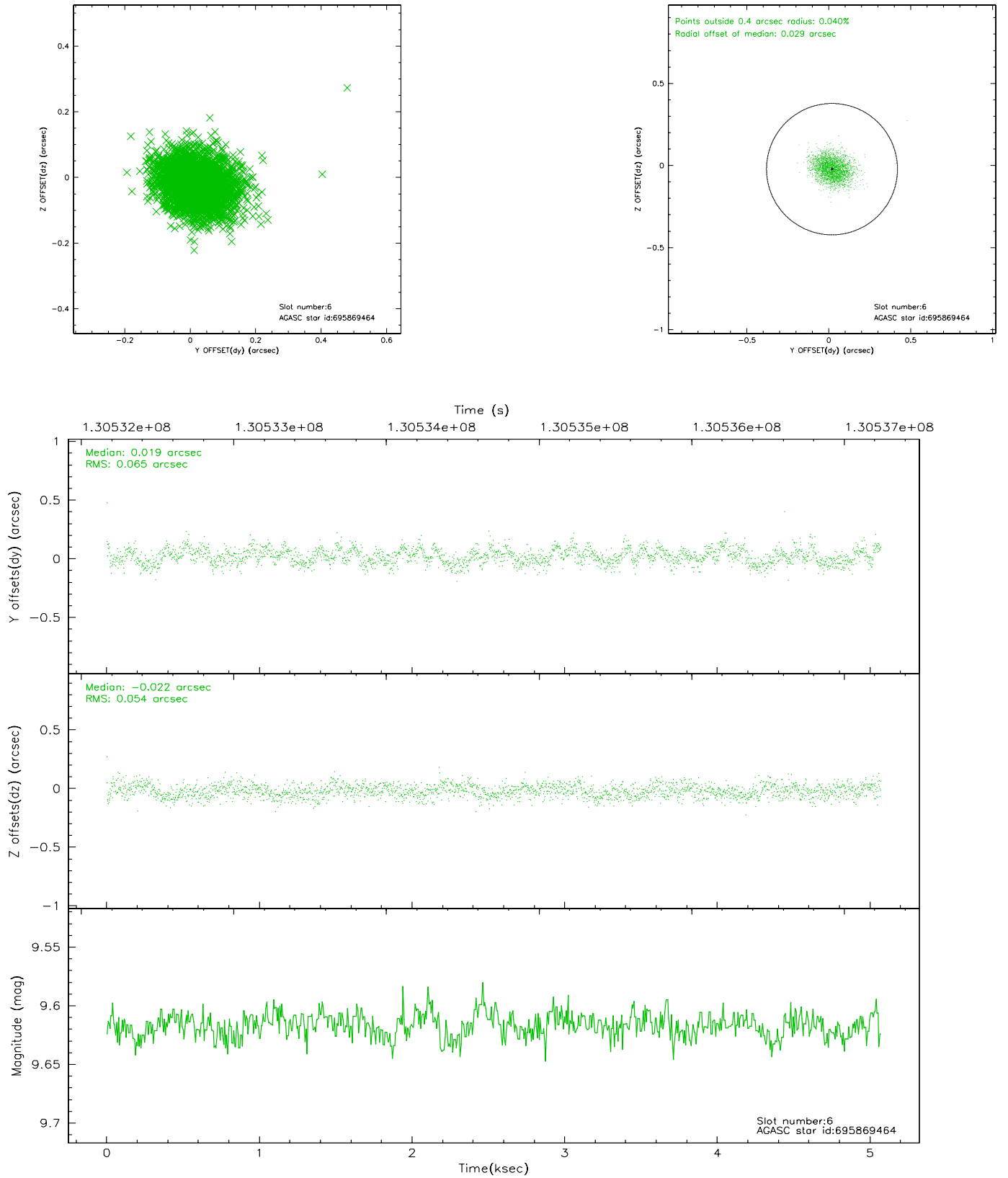
## 2.4.2 Slot 4



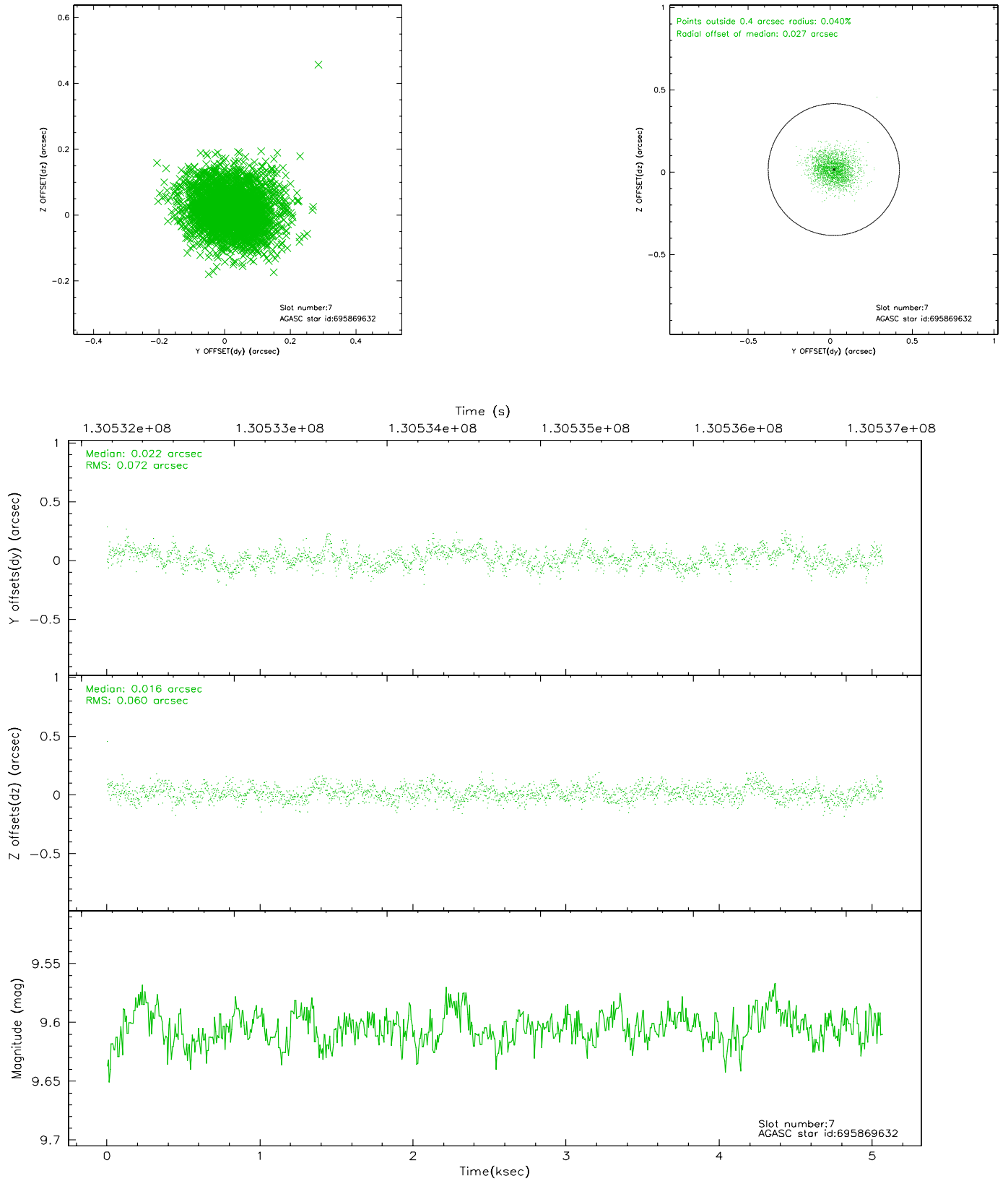
### 2.4.3 Slot 5



## 2.4.4 Slot 6

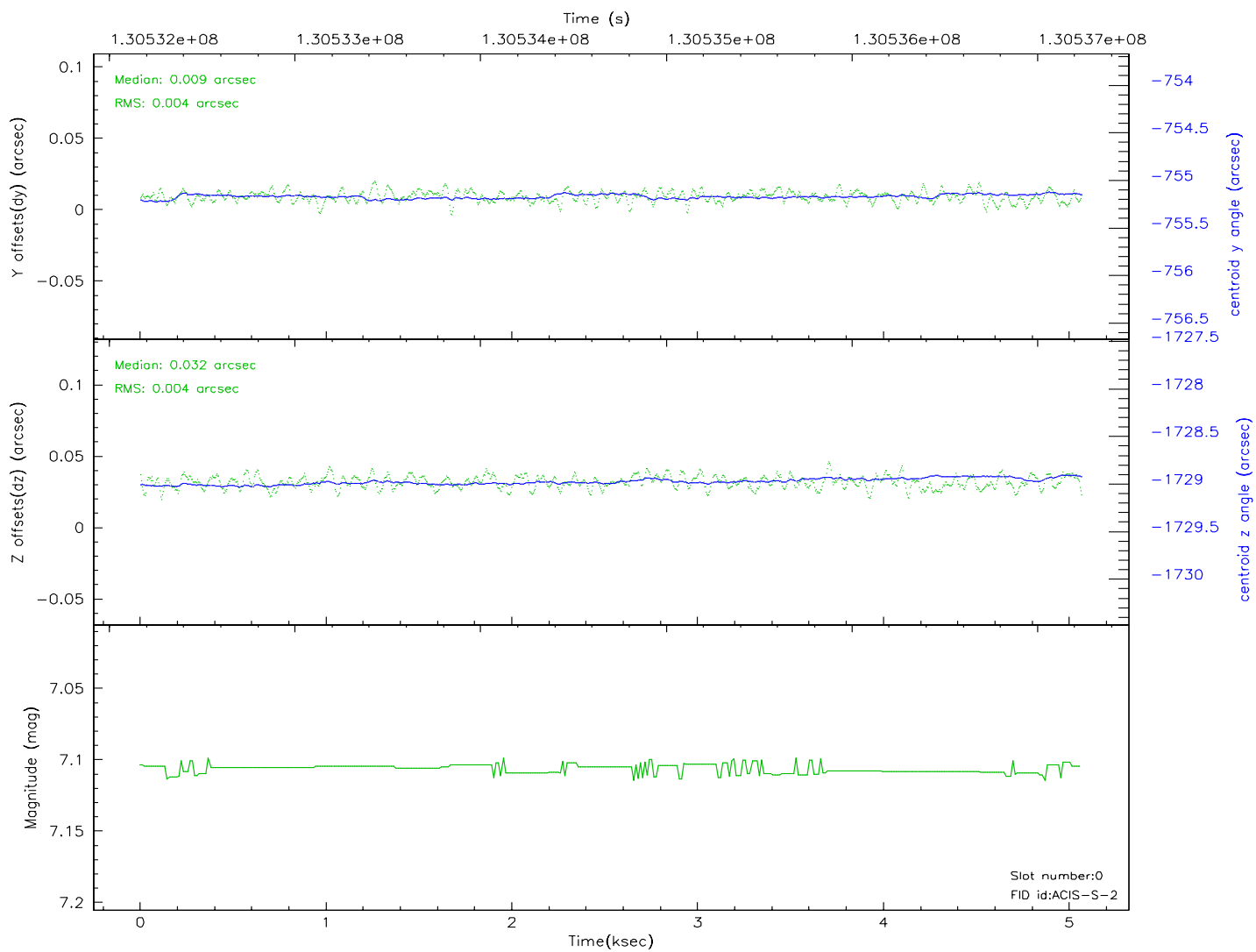
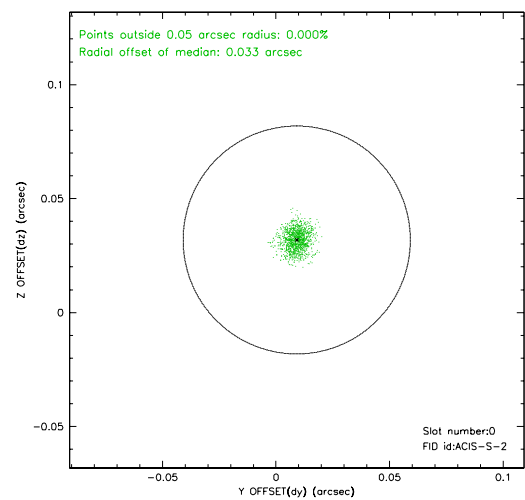
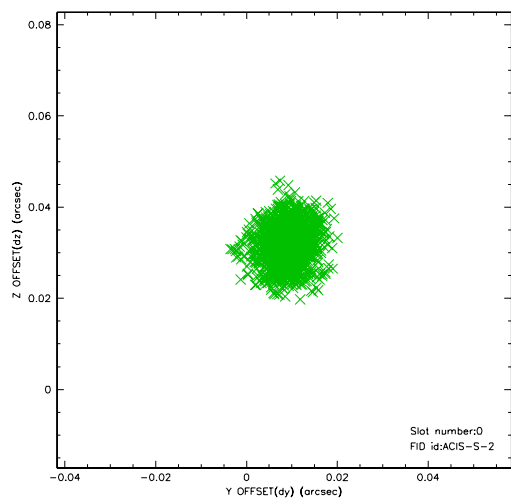


## 2.4.5 Slot 7

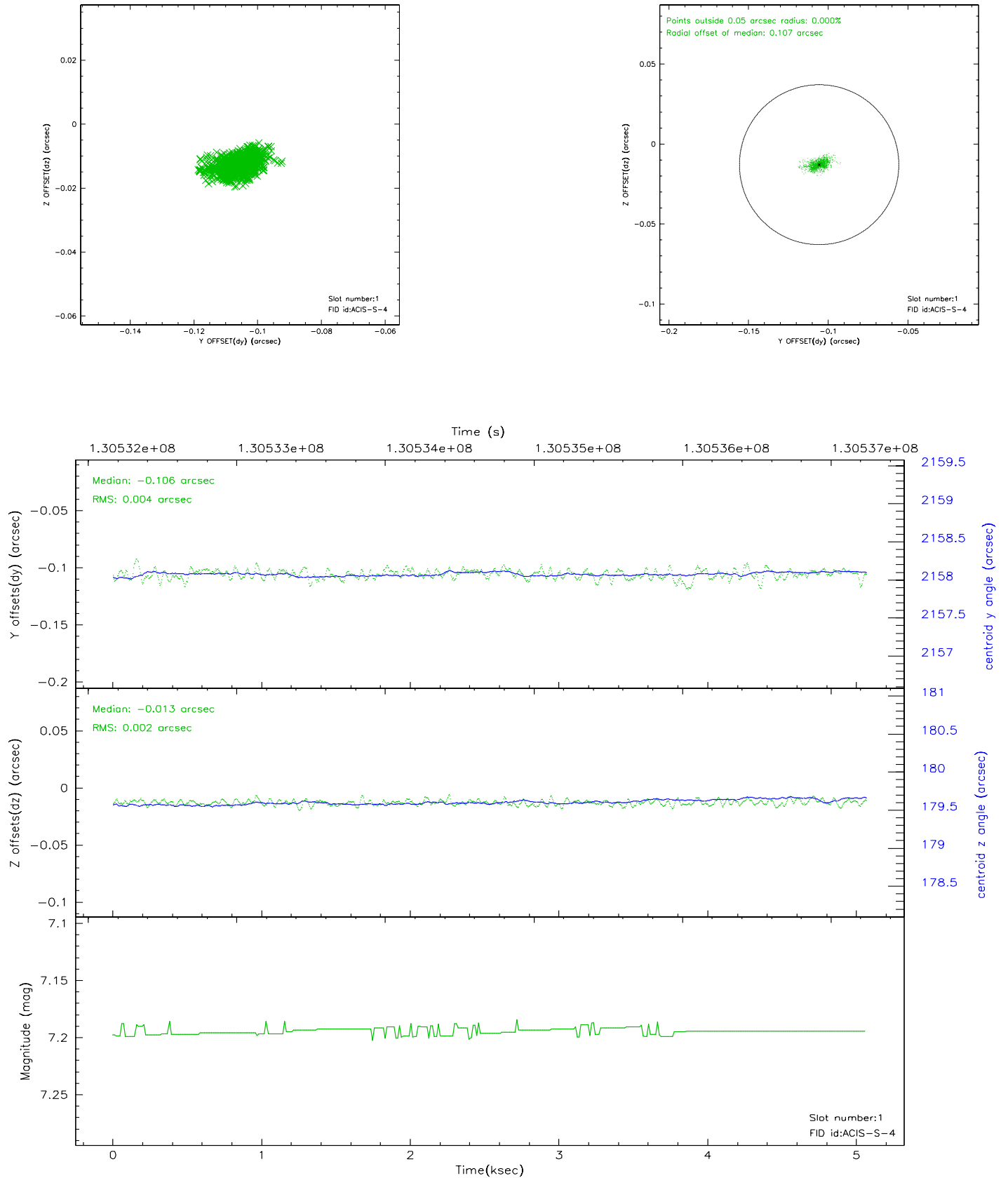


## 2.5 FID Slots

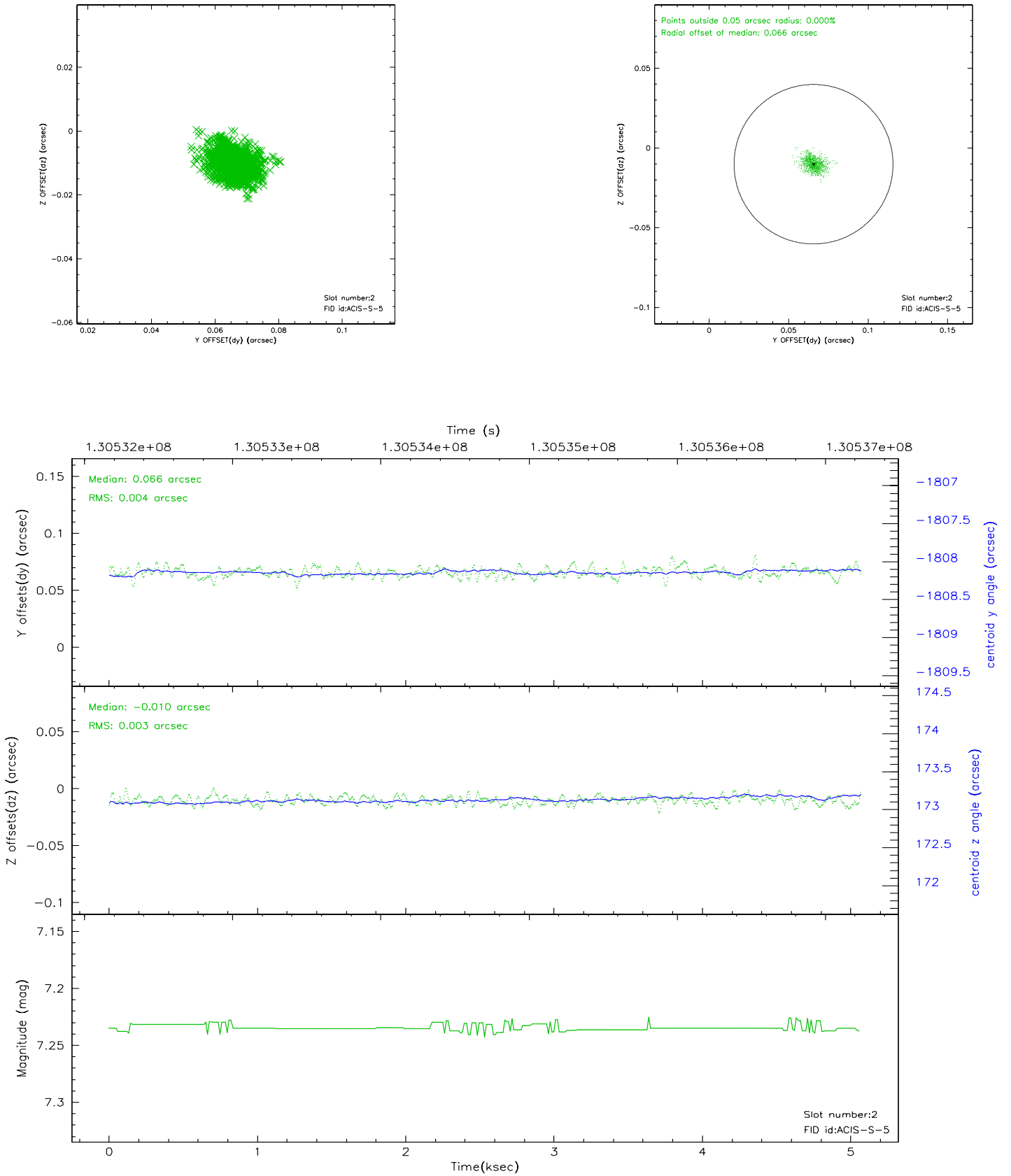
### 2.5.1 Slot 0



## 2.5.2 Slot 1

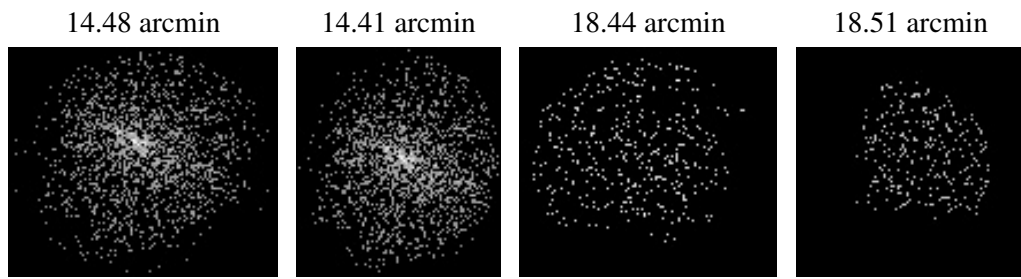


### 2.5.3 Slot 2





### 3 Point Sources



## A Summary

### A.1 Status

V&V Scientist	Jen Lauer
V&V Date (YYYY-MM-DD)	2006.09.05
V&V Edition	1
V&V Disposition and Status	OK
V&V Charge Time	5.065

### A.2 Comments