

V&V Reference Report

L2 ASCDS Version : 7.6.9

Observation 3243 - L2 Version 001
Chandra X-Ray Center

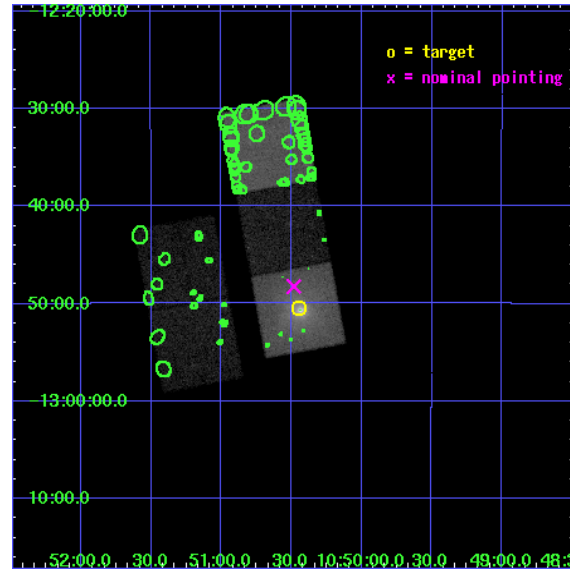
L2 Processing Date : Oct 12 2006

Contents

1	Front	2
2	OBI	3
2.1	OBI	3
2.1.1	Images	3
2.1.2	Bias	3
2.1.3	Parameters	4
2.1.4	Events	4
2.2	Compared Parameters	5
2.3	Aspect	6
2.4	Star Slots	9
2.4.1	Slot 3	9
2.4.2	Slot 4	10
2.4.3	Slot 5	11
2.4.4	Slot 6	12
2.4.5	Slot 7	13
2.5	FID Slots	14
2.5.1	Slot 0	14
2.5.2	Slot 1	15
2.5.3	Slot 2	16
3	Point Sources	17
A	Summary	18
A.1	Status	18
A.2	Comments	18

1 Front

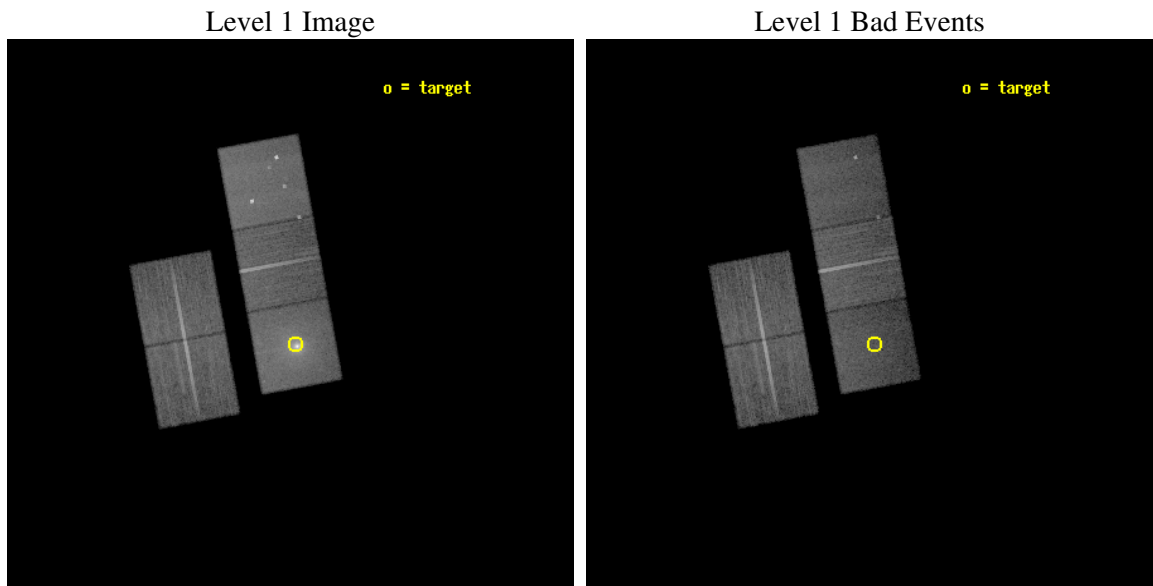
seq_num	800243
obs_id	3243
title	THE INTRAGROUP MEDIUM IN X-RAY LUMINOUS GALAXY GROUPS: RADIO SOURCES AND THE DISTRIBUTION OF HEAVY ELEMENTS
observer	DR. JAN VRTILEK
object	SS2B153
dtcycle	0
cycle	P
ra_targ	162.612083
dec_targ	-12.840556
ra_nom	162.62084241494
dec_nom	-12.804140654203
roll_nom	79.555642035131
revision	2
ontime	29905.699942499
livetime	29514.959956495
ontime2	29902.558982253
ontime3	29899.418002099
ontime5	29905.699942499
ontime6	29905.699942499
ontime7	29905.699942499
l2events	248237



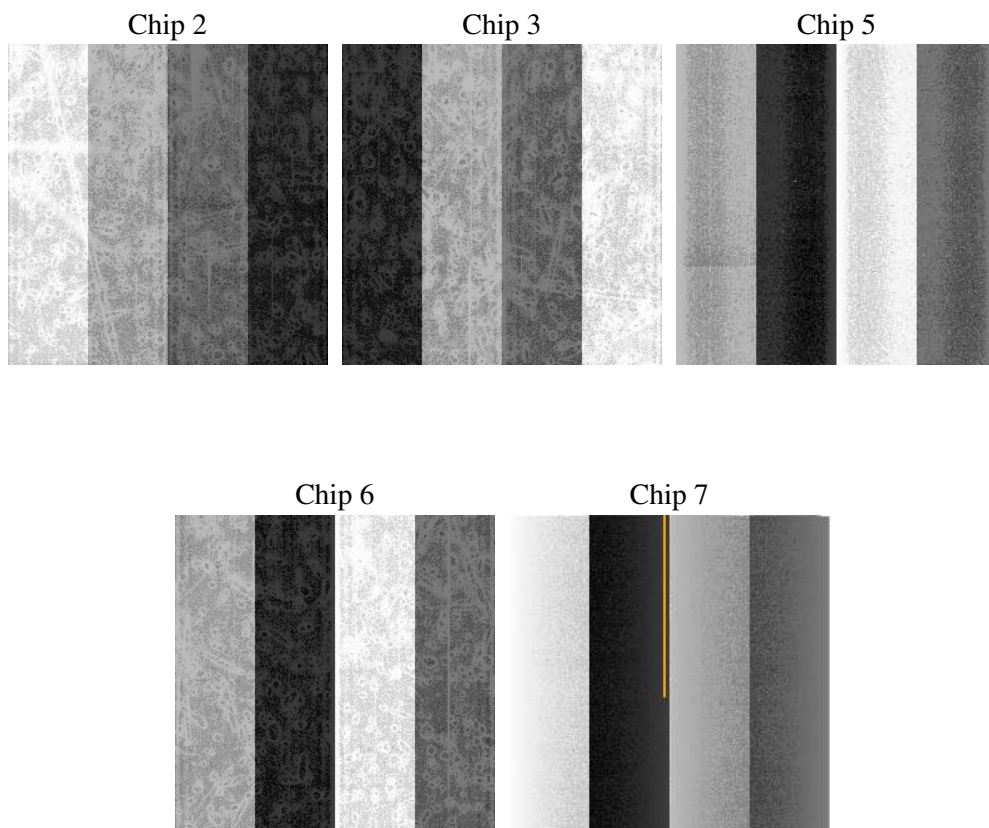
2 OBI

2.1 OBI

2.1.1 Images



2.1.2 Bias



2.1.3 Parameters

obi_num	0
ascdsver	7.6.9
caldsver	3.2.3
date	2006-10-12T03:24:29
revision	2

sched_exp_time	29800.000000
ontime	29911.748584241
ontime2	29908.607623994
ontime3	29905.46664384
ontime5	29911.748584241
ontime6	29911.748584241
ontime7	29911.748584241
l1events	875918

2.1.4 Events

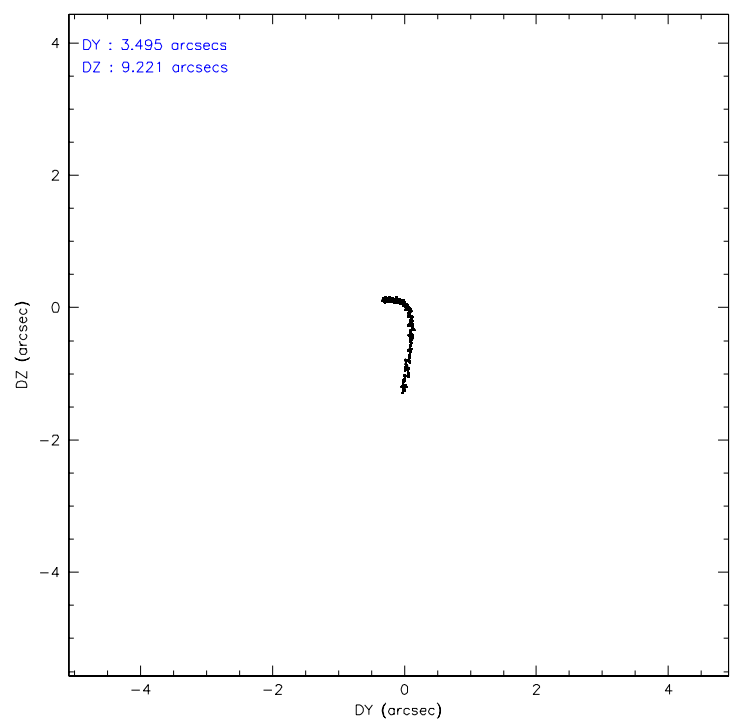
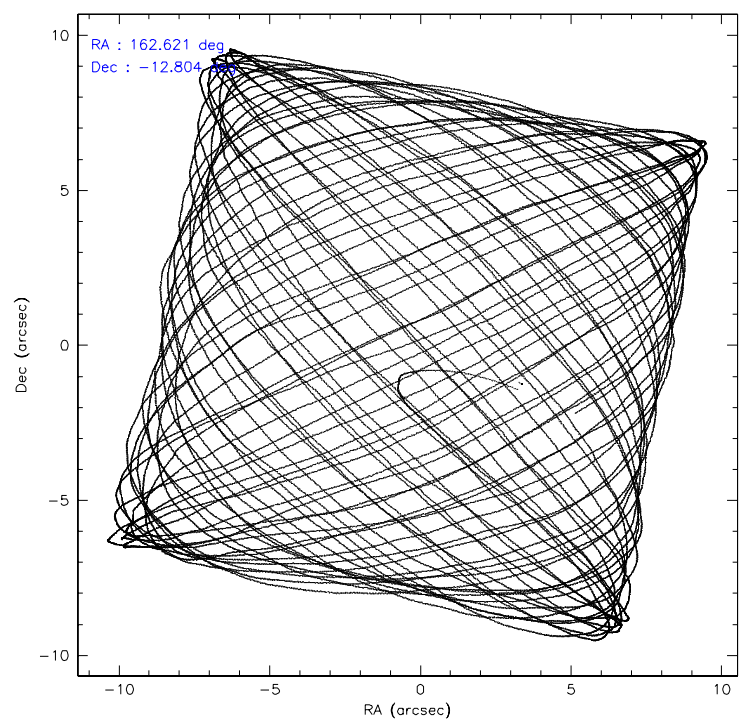
	ccd 2	ccd 3	ccd 5	ccd 6	ccd 7
level 1 events	152681	151922	204036	150364	216915
rejected events	138113	137774	103738	133880	93162
rejected %	90%	90%	50%	89%	42%

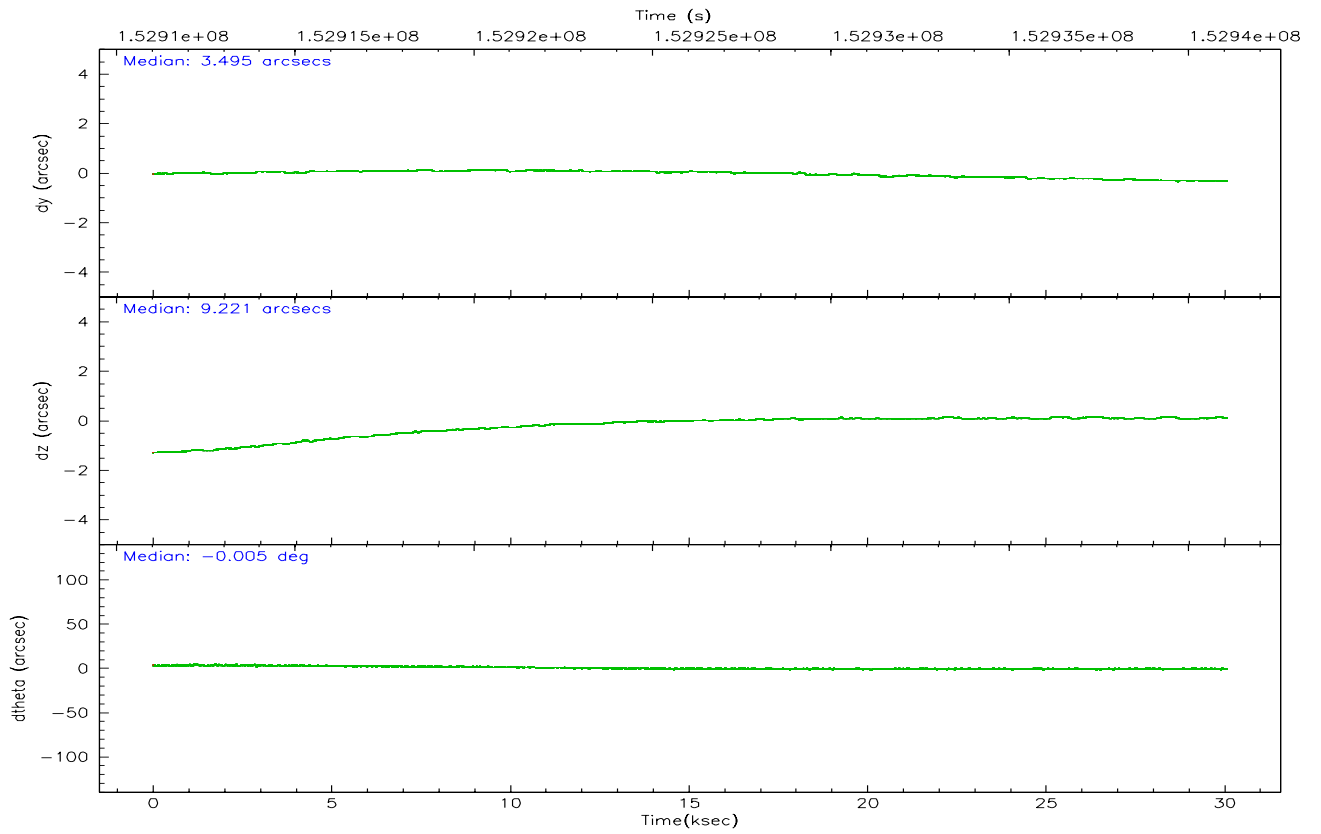
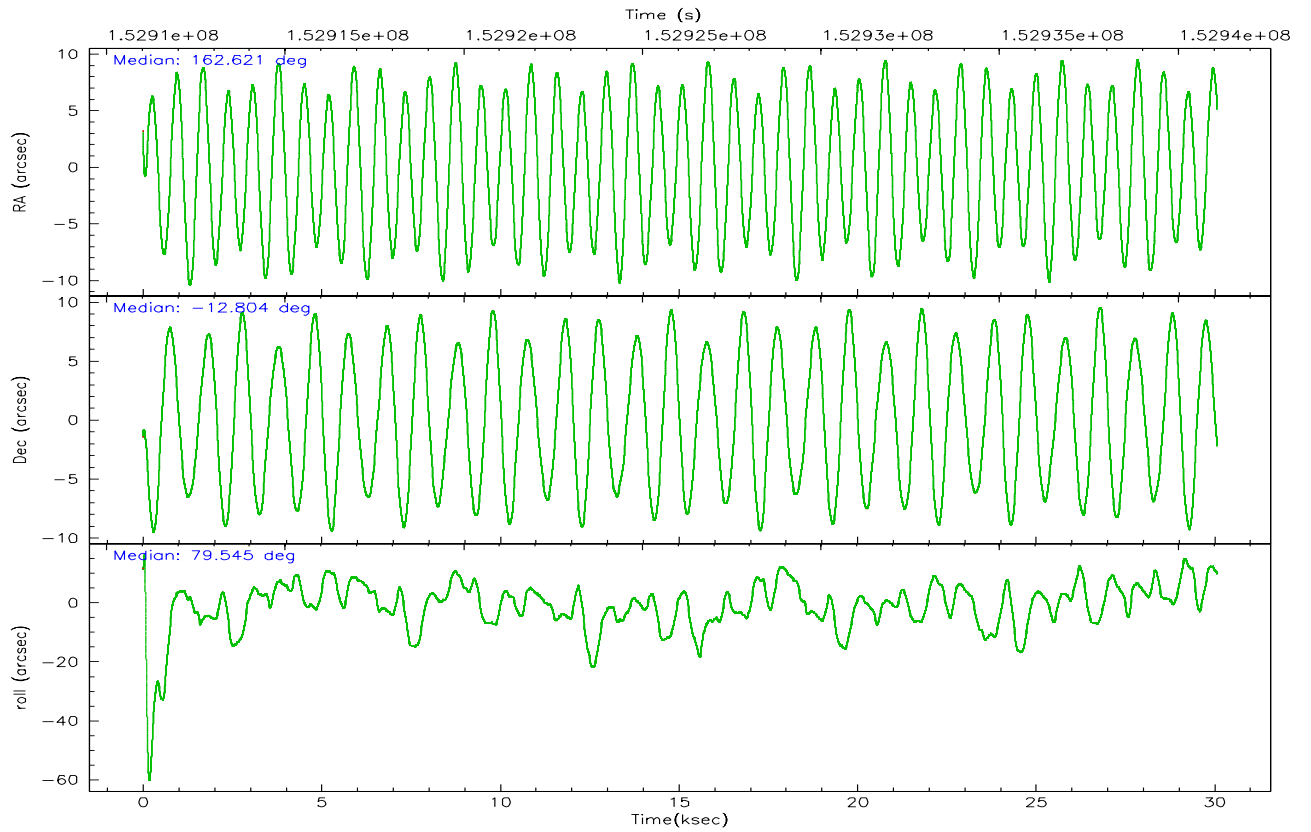
	ccd 2	ccd 3	ccd 5	ccd 6	ccd 7
grade 0 events	5386	5226	12286	6318	22316
	3%	3%	6%	4%	10%
grade 1 events	75	84	1402	67	87
	0%	0%	0%	0%	0%
grade 2 events	3225	2879	29665	3352	32317
	2%	1%	14%	2%	14%
grade 3 events	1717	1687	2667	1791	10524
	1%	1%	1%	1%	4%
grade 4 events	1636	1691	2609	1739	10421
	1%	1%	1%	1%	4%
grade 5 events	4751	5709	10644	5916	13106
	3%	3%	5%	3%	6%
grade 6 events	2606	2667	53091	3292	48202
	1%	1%	26%	2%	22%
grade 7 events	133285	131979	91672	127889	79942
	87%	86%	44%	85%	36%

2.2 Compared Parameters

Parameter	Planned	Actual	Parameter	Planned	Actual
Instrument	ACIS	ACIS	Obspar format version number	6	6
Detector	ACIS-23567	ACIS-23567	Obspar file type	PREDICTED	ACTUAL
Grating	NONE	NONE	Obspar update status	NONE	UPDATED
Data mode	VFAINT	VFAINT	Number of optional ACIS chips dropped	0	0
Observation mode	POINTING	POINTING	On-chip summing requested	N	N
Pointing RA	162.630522	162.6208424149355	Subarray requested	NONE	NONE
Pointing Dec	-12.829675	-12.80414065420303	Alternating exposures requested	N	N
Pointing Roll	79.401133	79.5556420351308	Primary exposure time	0.000000	3.1
SIM focus pos (mm)	-0.684267	-0.6828225247311905			
SIM defocus (mm)	0	0.001444936568705701			
SIM translation stage pos (mm)	-190.132523	-190.1400660498719			
SIM translation stage offset (mm)	0	0.00754346686406393			
Observation start time	152911291.184000	152910271.27735			
Observation start date	2002-11-05T19:20:27	2002-11-05T19:04:31			
Observation end time	152941091.184000	152941665.49115			
Observation end date	2002-11-06T03:37:07	2002-11-06T03:47:45			
Read mode	TIMED	TIMED			

2.3 Aspect



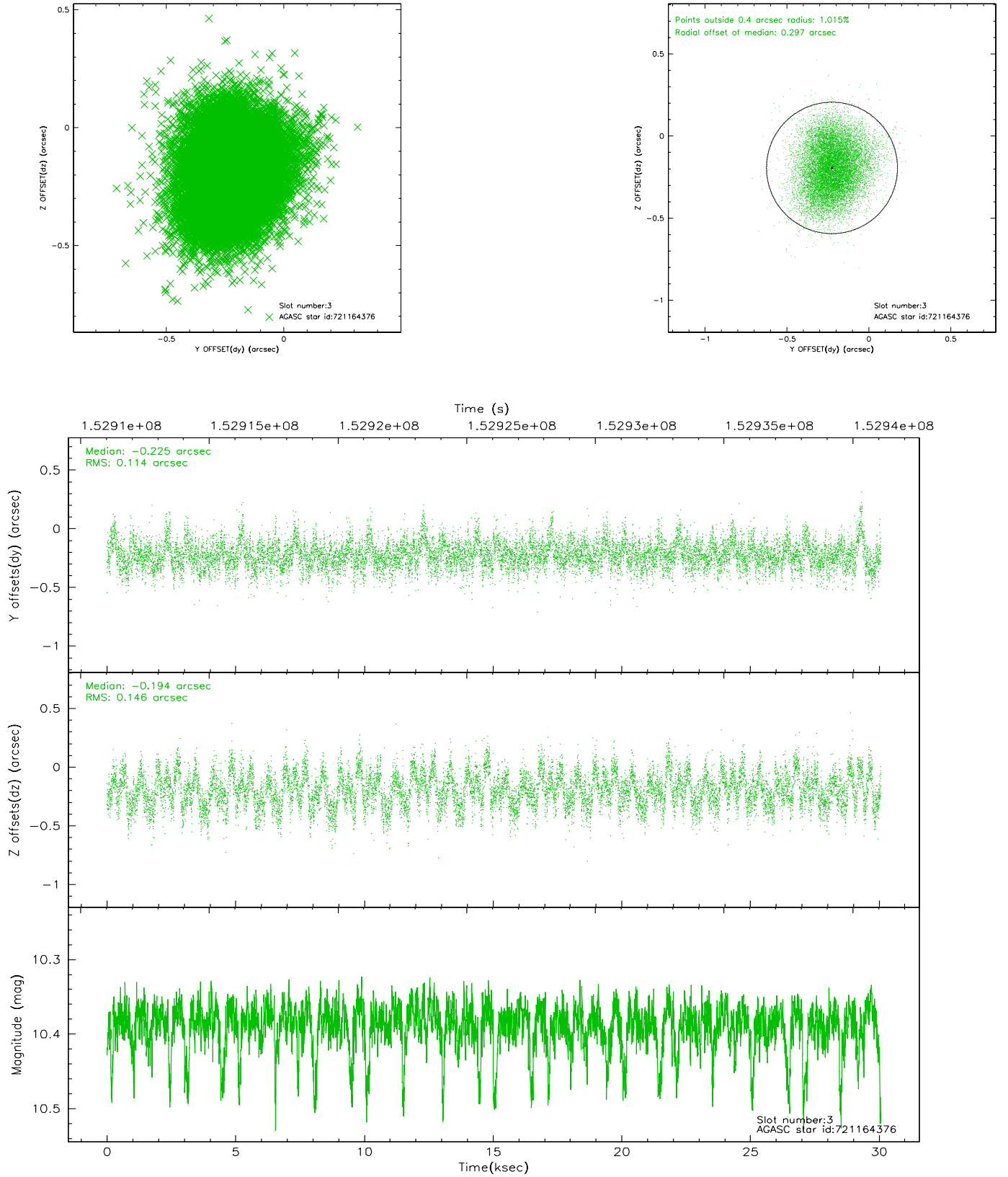


Slot Statistics

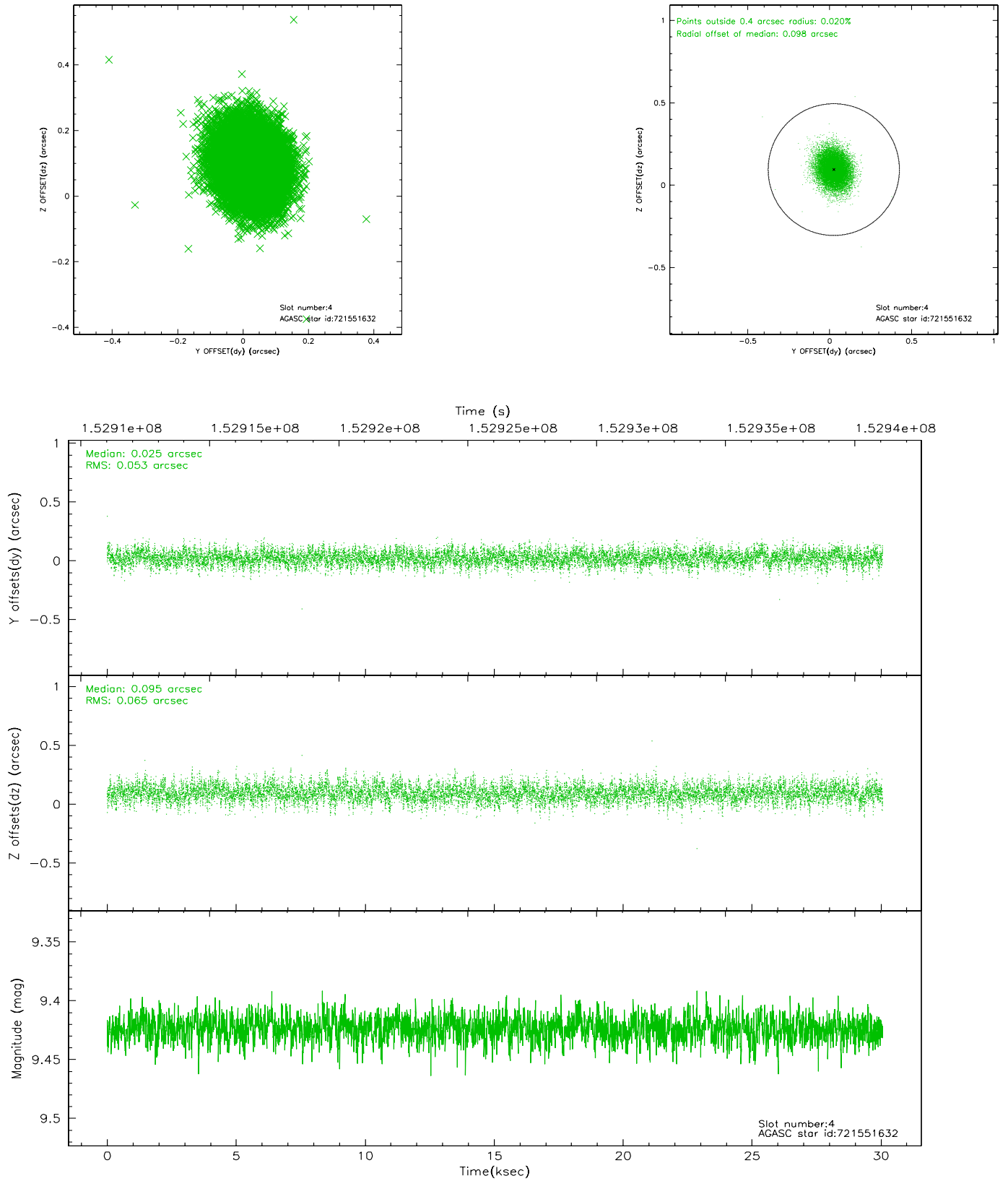
slot	status	id	mag	n_pts	med_dy	med_dz	dr1	dr2	ra	dec	mean_y	mean_z
0	FID	ACIS-S-2	7.11	7335	-0.017	0.016	0.015	0.031	0.000000	0.000000	-756.12	-1730.20
1	FID	ACIS-S-4	7.20	7336	-0.020	0.005	0.021	0.038	0.000000	0.000000	2157.11	178.21
2	FID	ACIS-S-5	7.24	7336	0.007	-0.009	0.010	0.016	0.000000	0.000000	-1808.86	171.93
3	GUIDE	721164376	10.39	14481	-0.225	-0.194	0.198	0.317	162.237638	-12.107781	2298.89	1837.03
4	GUIDE	721551632	9.42	14665	0.025	0.095	0.089	0.145	162.970801	-13.021309	-458.56	-1300.55
5	GUIDE	721551544	10.06	14382	0.153	-0.254	0.127	0.208	162.508073	-13.351836	-1926.09	74.62
6	GUIDE	721555464	9.63	14658	0.197	0.153	0.121	0.199	162.593427	-13.435328	-2166.32	-273.45
7	GUIDE	721551960	9.61	14662	-0.149	0.186	0.134	0.215	163.377327	-12.617125	1231.51	-2438.83

2.4 Star Slots

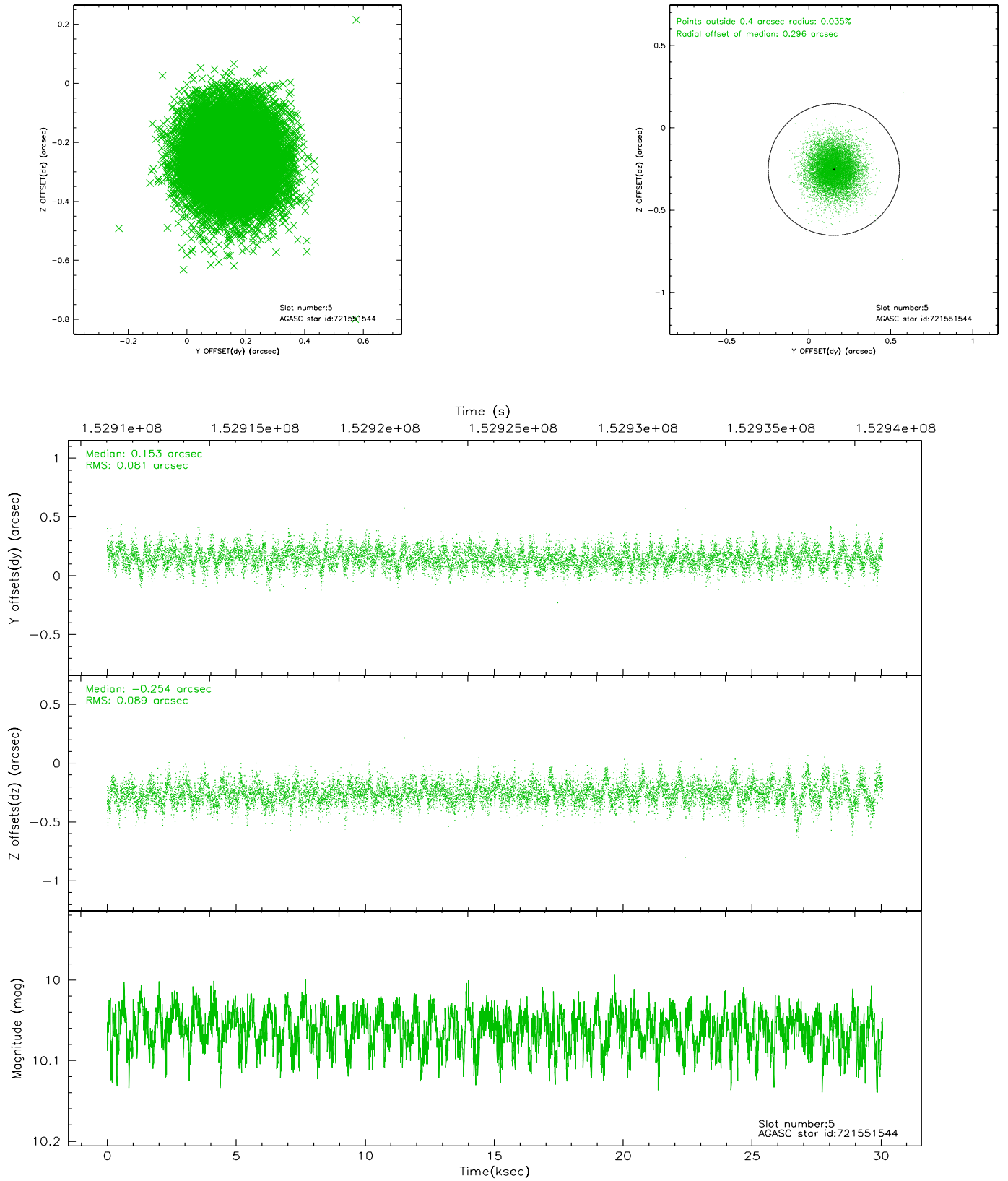
2.4.1 Slot 3



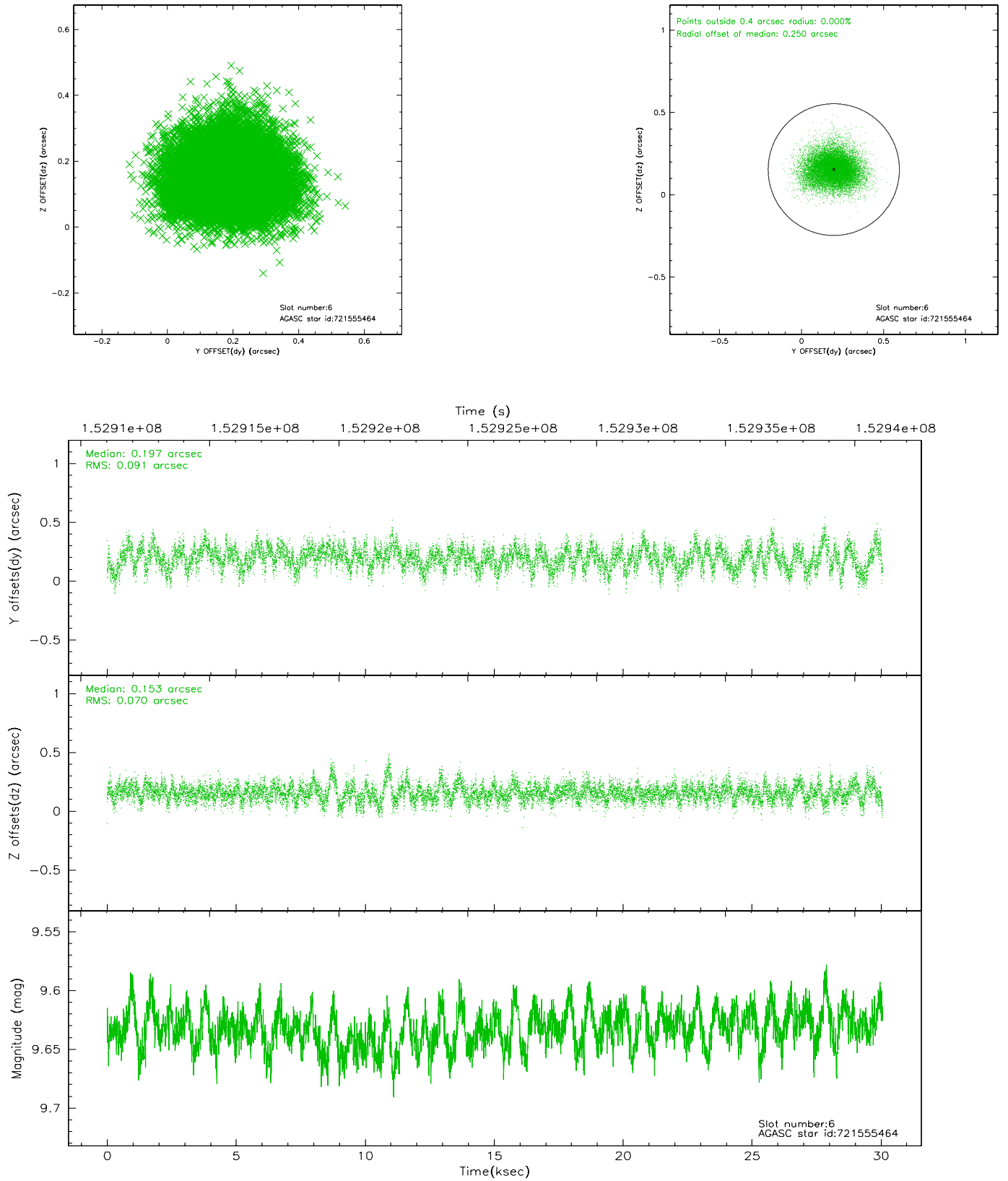
2.4.2 Slot 4



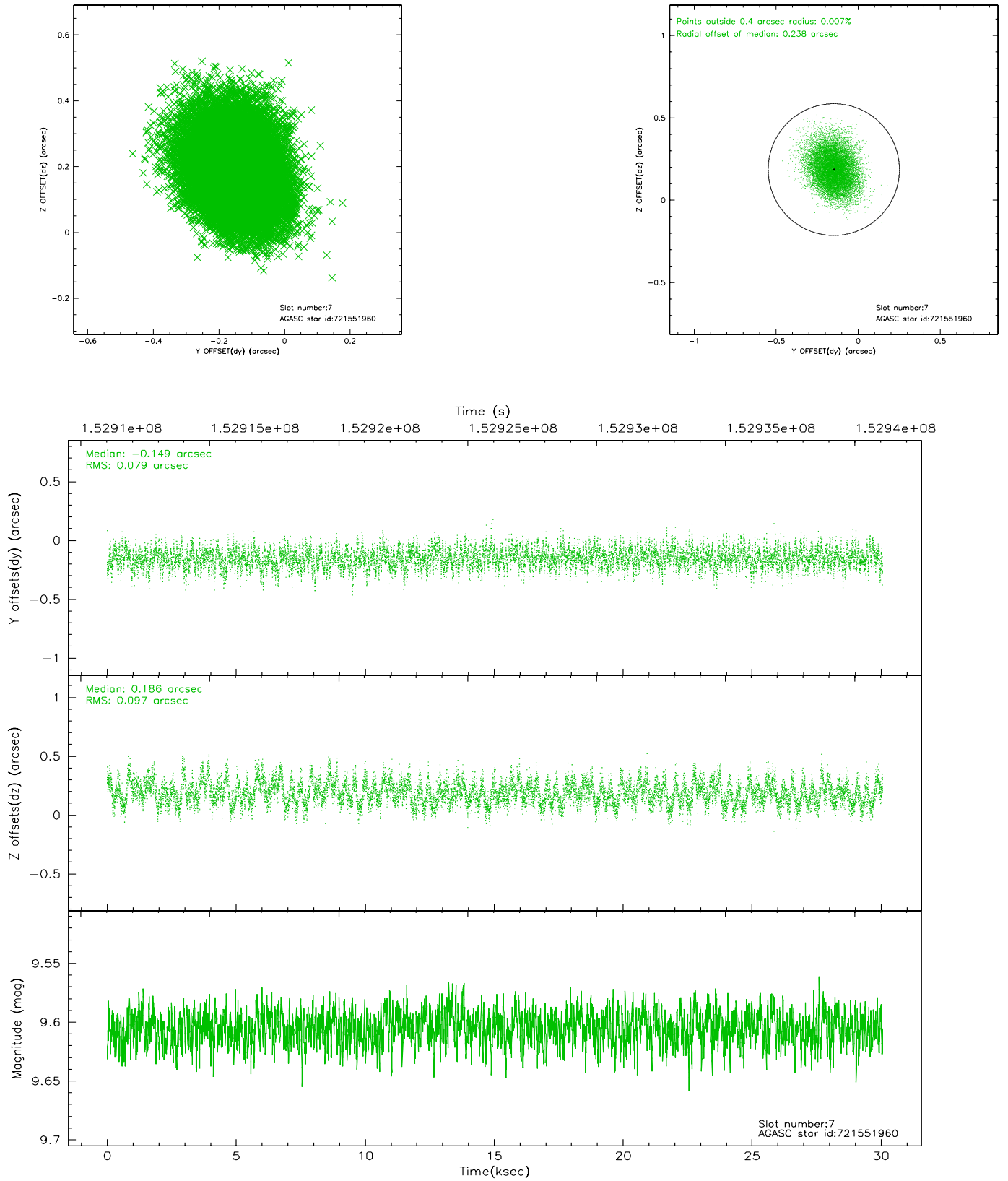
2.4.3 Slot 5



2.4.4 Slot 6

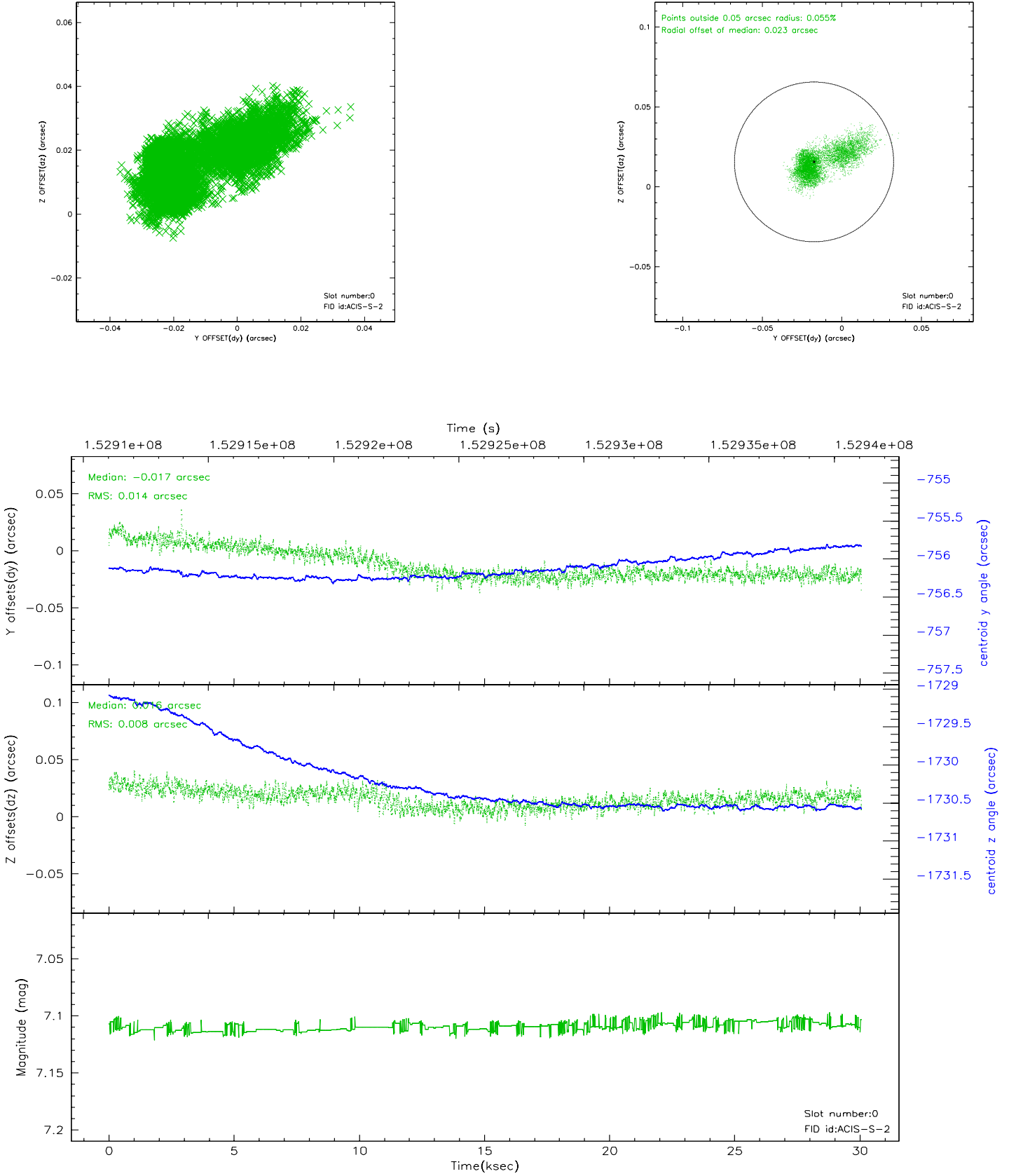


2.4.5 Slot 7

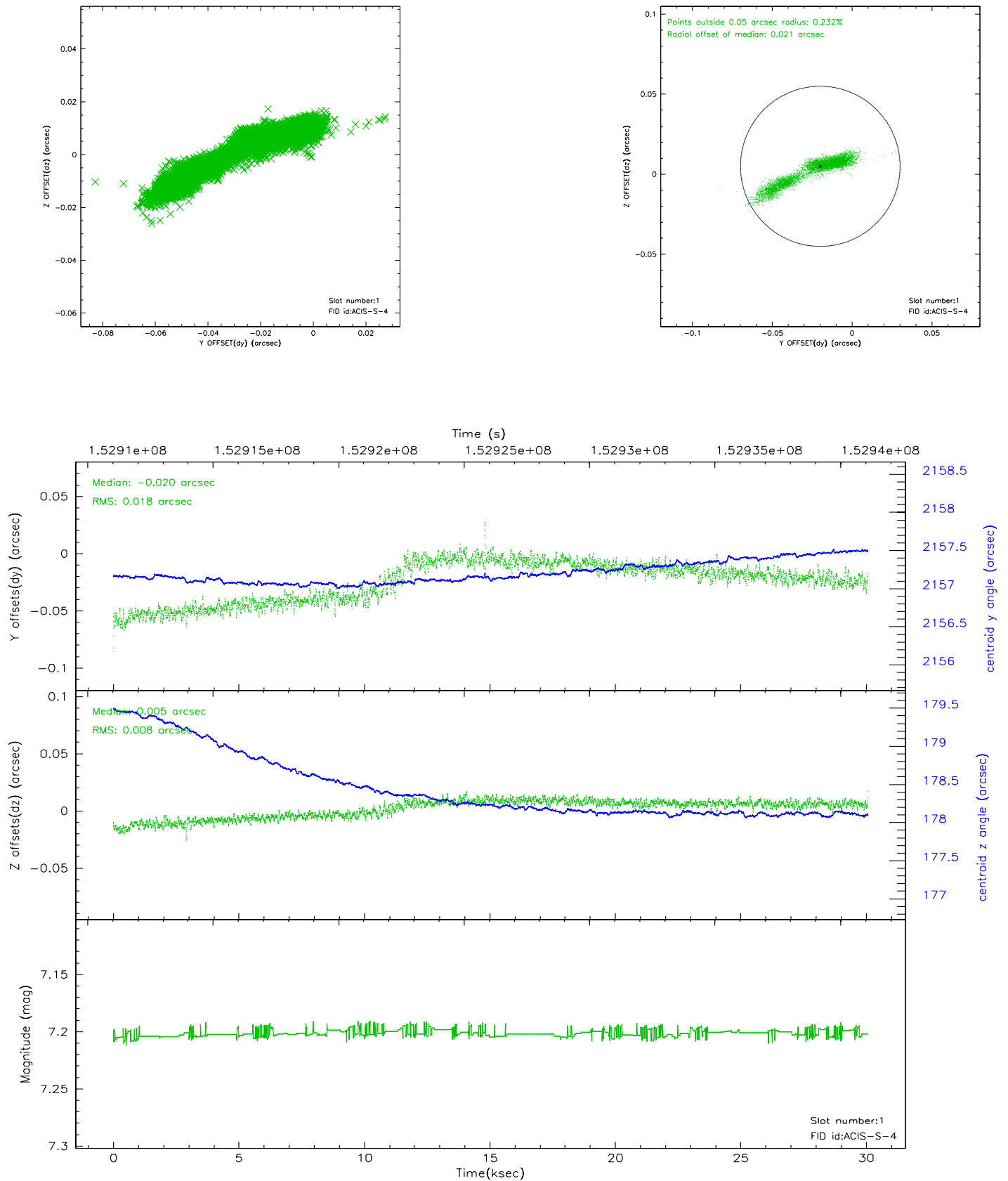


2.5 FID Slots

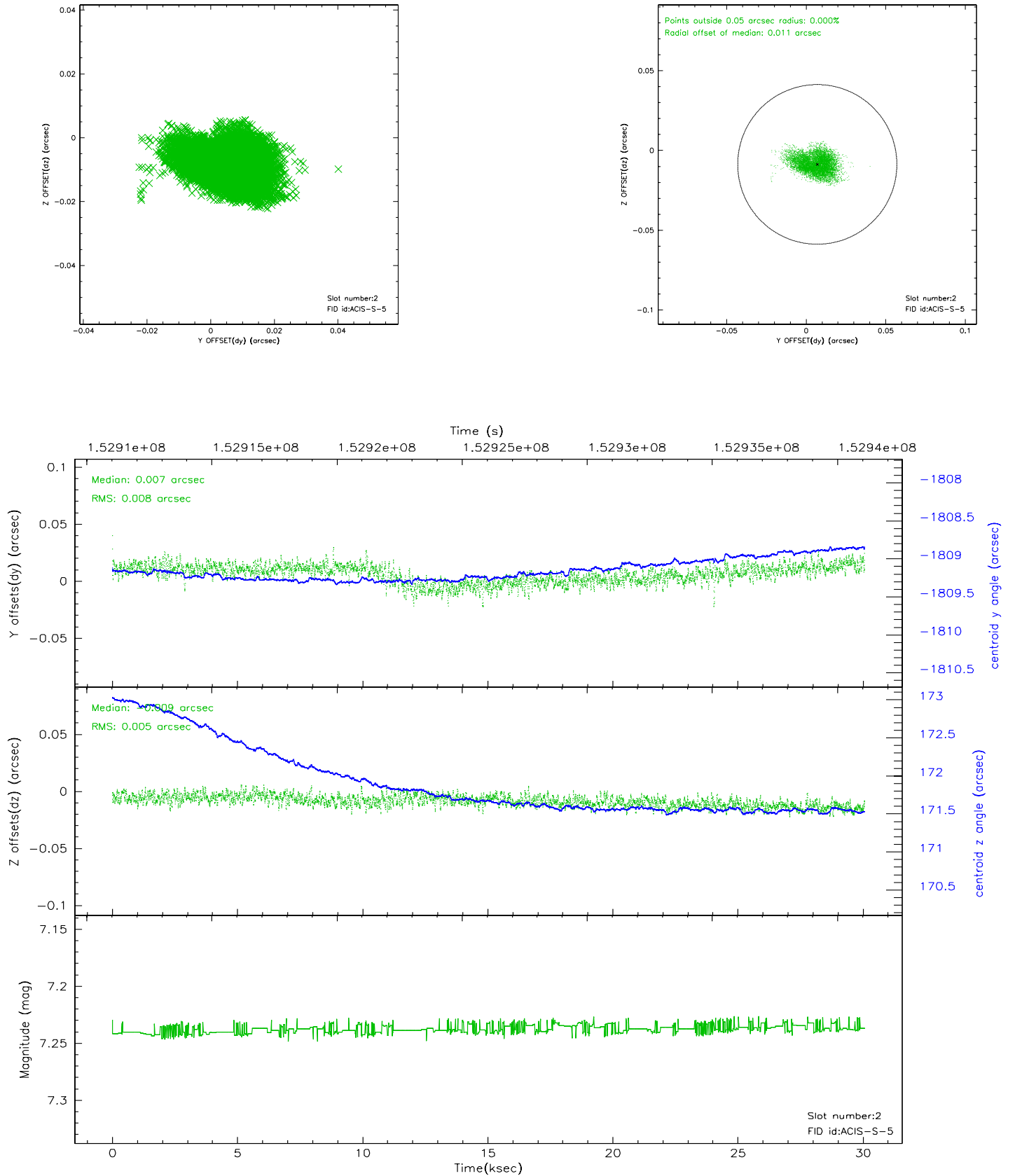
2.5.1 Slot 0



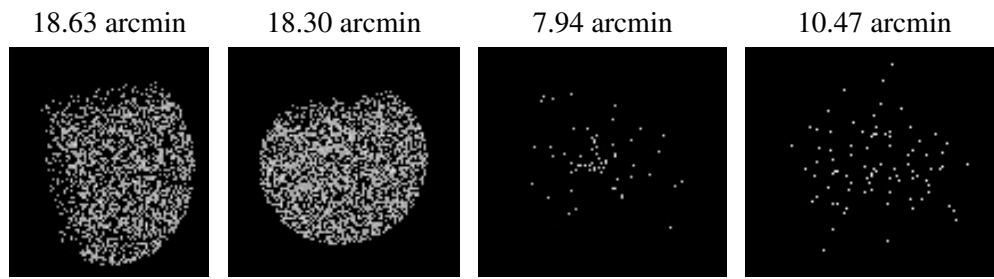
2.5.2 Slot 1



2.5.3 Slot 2



3 Point Sources



A Summary

A.1 Status

V&V Scientist	Beth Sundheim
V&V Date (YYYY-MM-DD)	2006.10.12
V&V Edition	1
V&V Disposition and Status	OK
V&V Charge Time	29.908

A.2 Comments