

V&V Reference Report

L2 ASCDS Version : 7.6.9

Observation 3223 - L2 Version 001
Chandra X-Ray Center

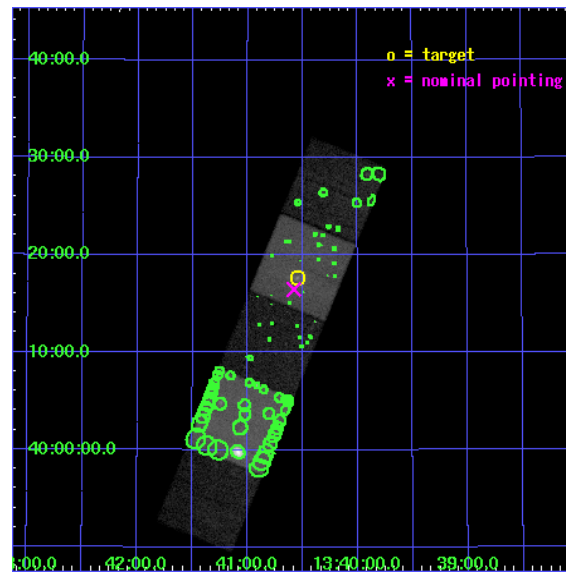
L2 Processing Date : Sep 28 2006

Contents

1	Front	2
2	OBI	3
2.1	OBI	3
2.1.1	Images	3
2.1.2	Bias	3
2.1.3	Parameters	4
2.1.4	Events	4
2.2	Compared Parameters	5
2.3	Aspect	6
2.4	Star Slots	9
2.4.1	Slot 3	9
2.4.2	Slot 4	10
2.4.3	Slot 5	11
2.4.4	Slot 6	12
2.4.5	Slot 7	13
2.5	FID Slots	14
2.5.1	Slot 0	14
2.5.2	Slot 1	15
2.5.3	Slot 2	16
3	Point Sources	17
A	Summary	18
A.1	Status	18
A.2	Comments	18

1 Front

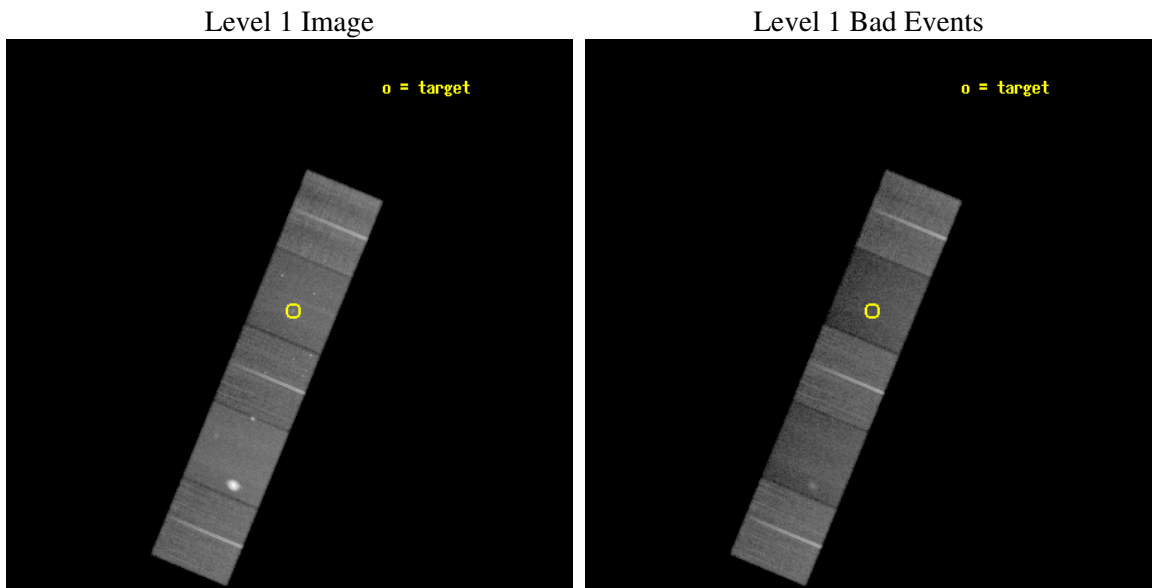
seq_num	800223
obs_id	3223
title	THE X-RAY STRUCTURE OF THE PROTOTYPE FOSSIL GROUP
observer	Dr Laurence Jones
object	RXJ1340.6+4018
dtcycle	0
cycle	P
ra_targ	205.136667
dec_targ	40.294444
ra_nom	205.14487816168
dec_nom	40.274630533692
roll_nom	292.35873703245
revision	2
ontime	47615.999908447
livetime	46993.861815254
ontime4	47603.436017692
ontime5	47615.999908447
ontime6	47606.577027798
ontime7	47615.999908447
ontime8	47606.576948047
l2events	343048



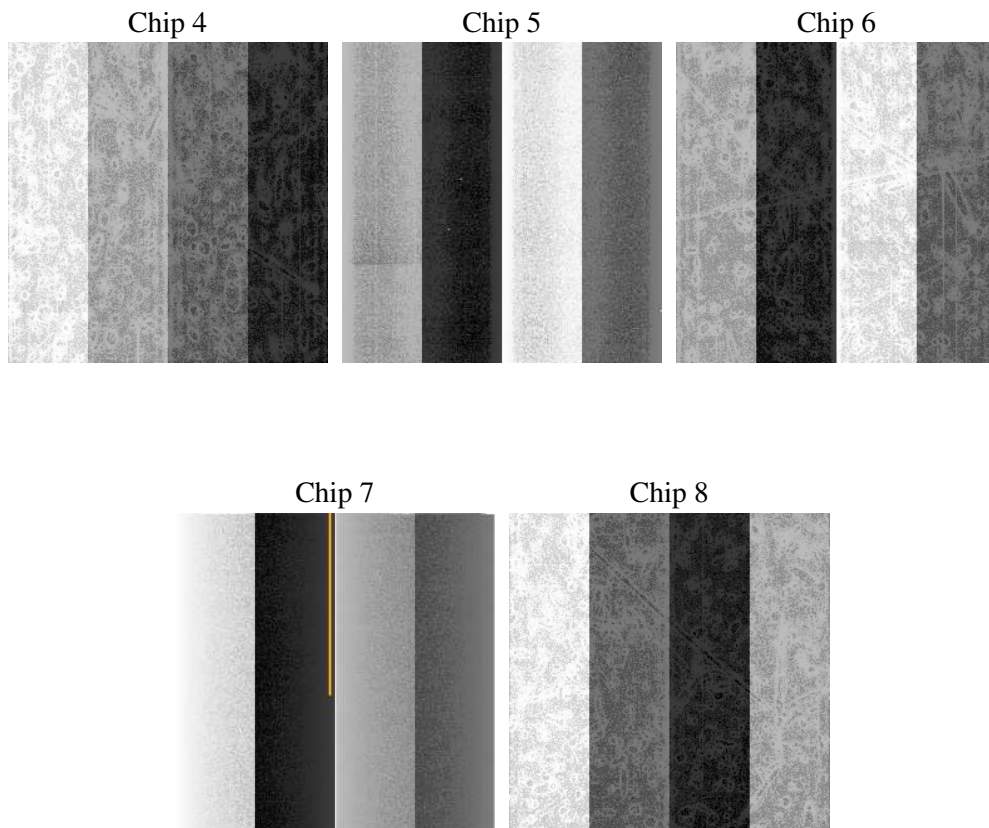
2 OBI

2.1 OBI

2.1.1 Images



2.1.2 Bias



2.1.3 Parameters

obi_num	1
ascdsver	7.6.9
caldbver	3.2.3
date	2006-09-28T21:38:23
revision	2

sched_exp_time	47455.479000
ontime	48032.166641504
ontime4	47928.51278019
ontime5	48032.166641504
ontime6	47934.798149914
ontime7	48032.166641504
ontime8	47947.362230152
llevents	1282755

2.1.4 Events

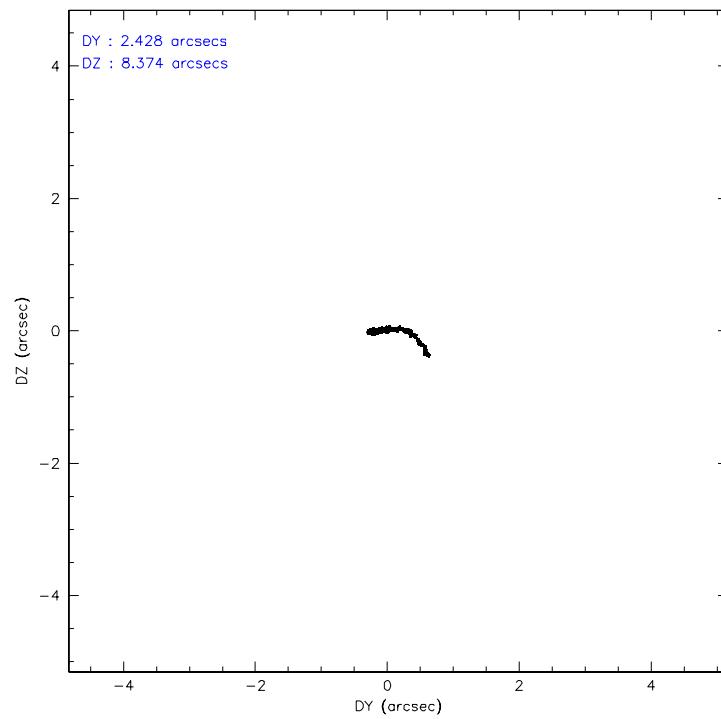
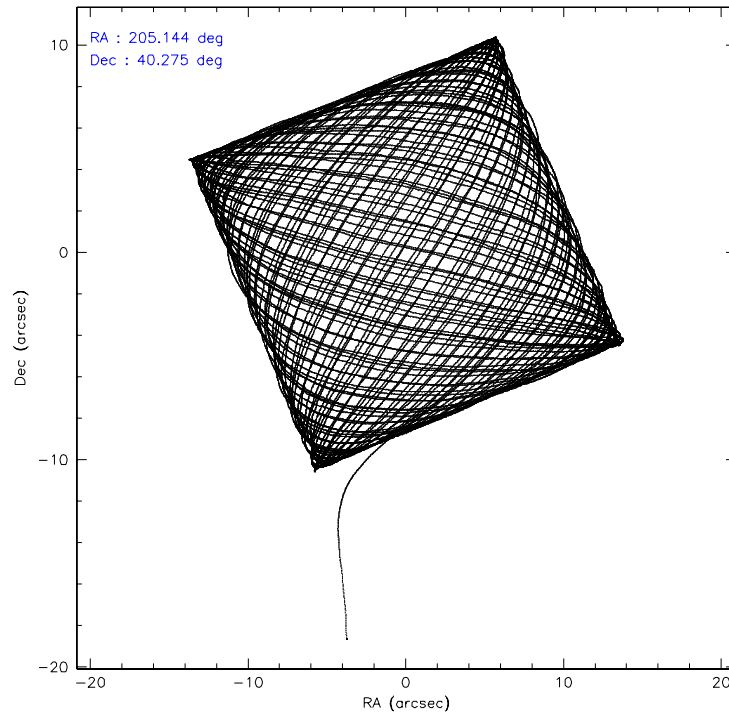
	ccd 4	ccd 5	ccd 6	ccd 7	ccd 8
level 1 events	251502	320546	225877	210077	274753
rejected events	227702	131449	201108	111195	212224
rejected %	90%	41%	89%	52%	77%

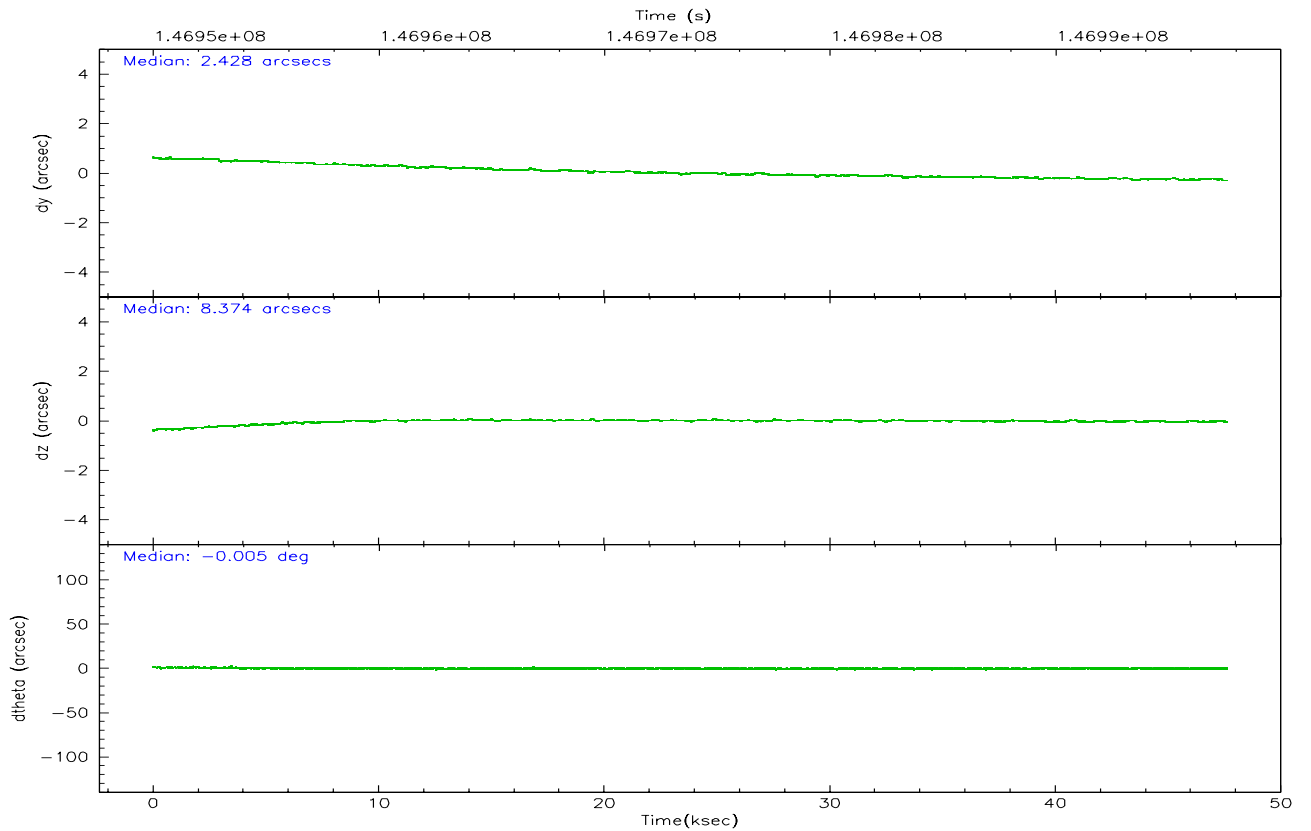
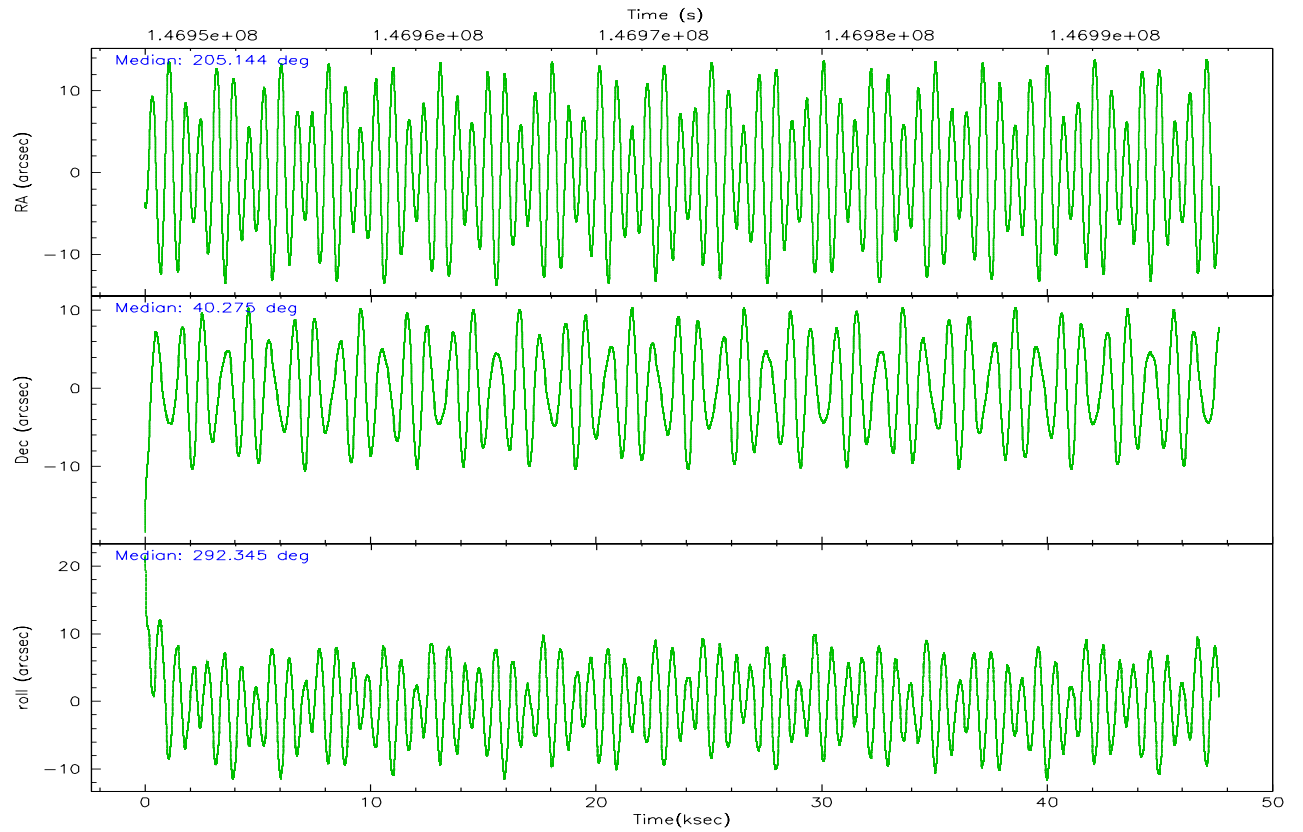
	ccd 4	ccd 5	ccd 6	ccd 7	ccd 8
grade 0 events	9770	28706	10113	8723	17701
	3%	8%	4%	4%	6%
grade 1 events	163	131	117	137	178
	0%	0%	0%	0%	0%
grade 2 events	5305	62632	5024	25242	14019
	2%	19%	2%	12%	5%
grade 3 events	2643	8233	2586	6571	7350
	1%	2%	1%	3%	2%
grade 4 events	2595	8266	2593	6431	6875
	1%	2%	1%	3%	2%
grade 5 events	6761	15494	7343	16842	10706
	2%	4%	3%	8%	3%
grade 6 events	3626	82666	4604	52714	17012
	1%	25%	2%	25%	6%
grade 7 events	220639	114418	193497	93417	200912
	87%	35%	85%	44%	73%

2.2 Compared Parameters

Parameter	Planned	Actual	Parameter	Planned	Actual
Instrument	ACIS	ACIS	Obspar format version number	6	6
Detector	ACIS-45678	ACIS-45678	Obspar file type	PREDICTED	ACTUAL
Grating	NONE	NONE	Obspar update status	NONE	UPDATED
Data mode	VFAINT	VFAINT	Number of optional ACIS chips dropped	0	0
Observation mode	POINTING	POINTING	On-chip summing requested	N	N
Pointing RA	205.116333	205.1448781616751	Subarray requested	NONE	NONE
Pointing Dec	40.290993	40.27463053369151	Alternating exposures requested	N	N
Pointing Roll	292.220561	292.3587370324486	Primary exposure time	0.000000	3.1
SIM focus pos (mm)	-0.684267	-0.6828225247311905			
SIM defocus (mm)	0	0.001444936568705701			
SIM translation stage pos (mm)	-190.132523	-190.1400660498719			
SIM translation stage offset (mm)	0	0.00754346686406393			
Observation start time	146950153.184000	146948957.64294			
Observation start date	2002-08-28T19:28:09	2002-08-28T19:09:17			
Observation end time	146997608.184000	146998422.60748			
Observation end date	2002-08-29T08:39:04	2002-08-29T08:53:42			
Read mode	TIMED	TIMED			

2.3 Aspect



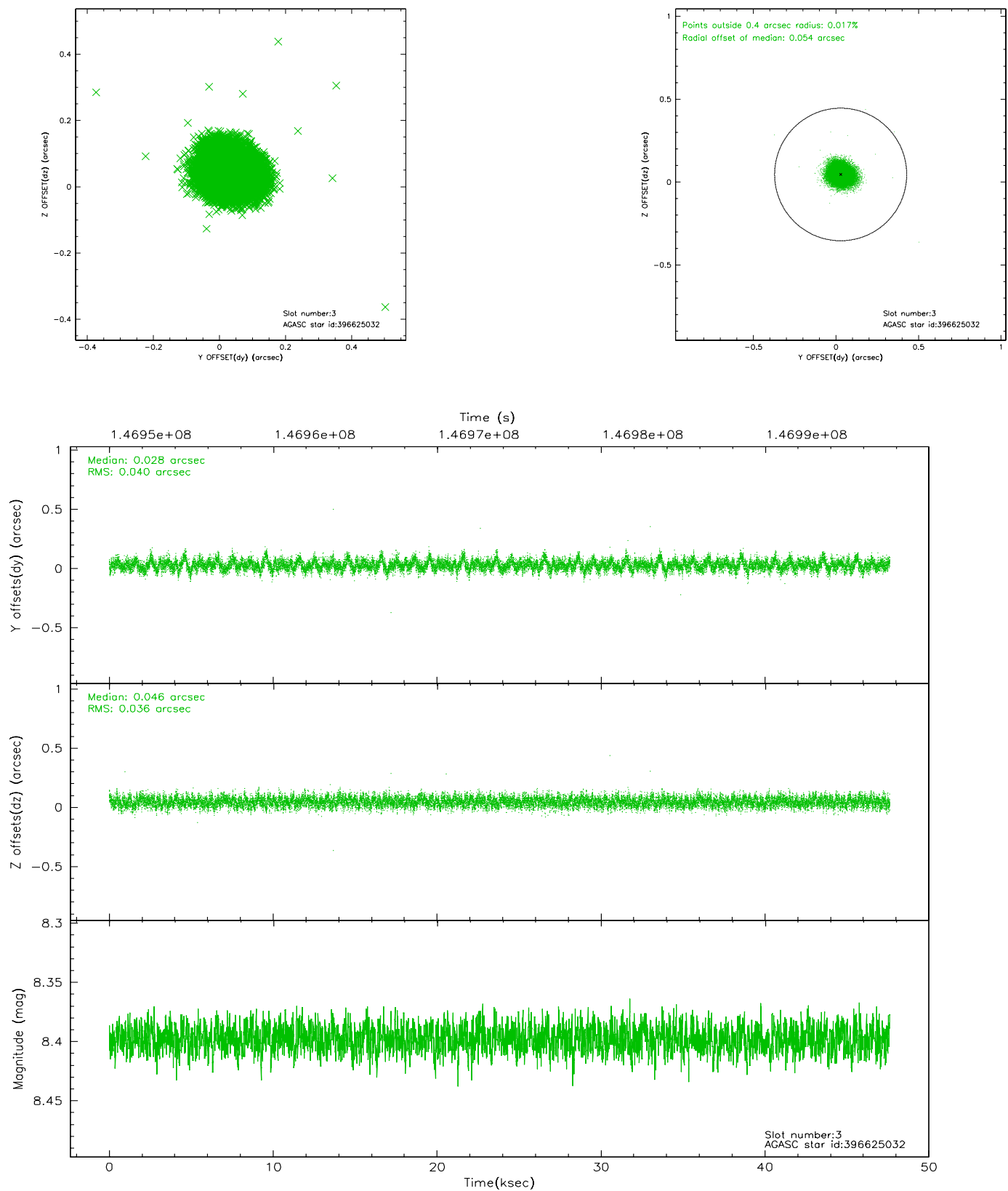


Slot Statistics

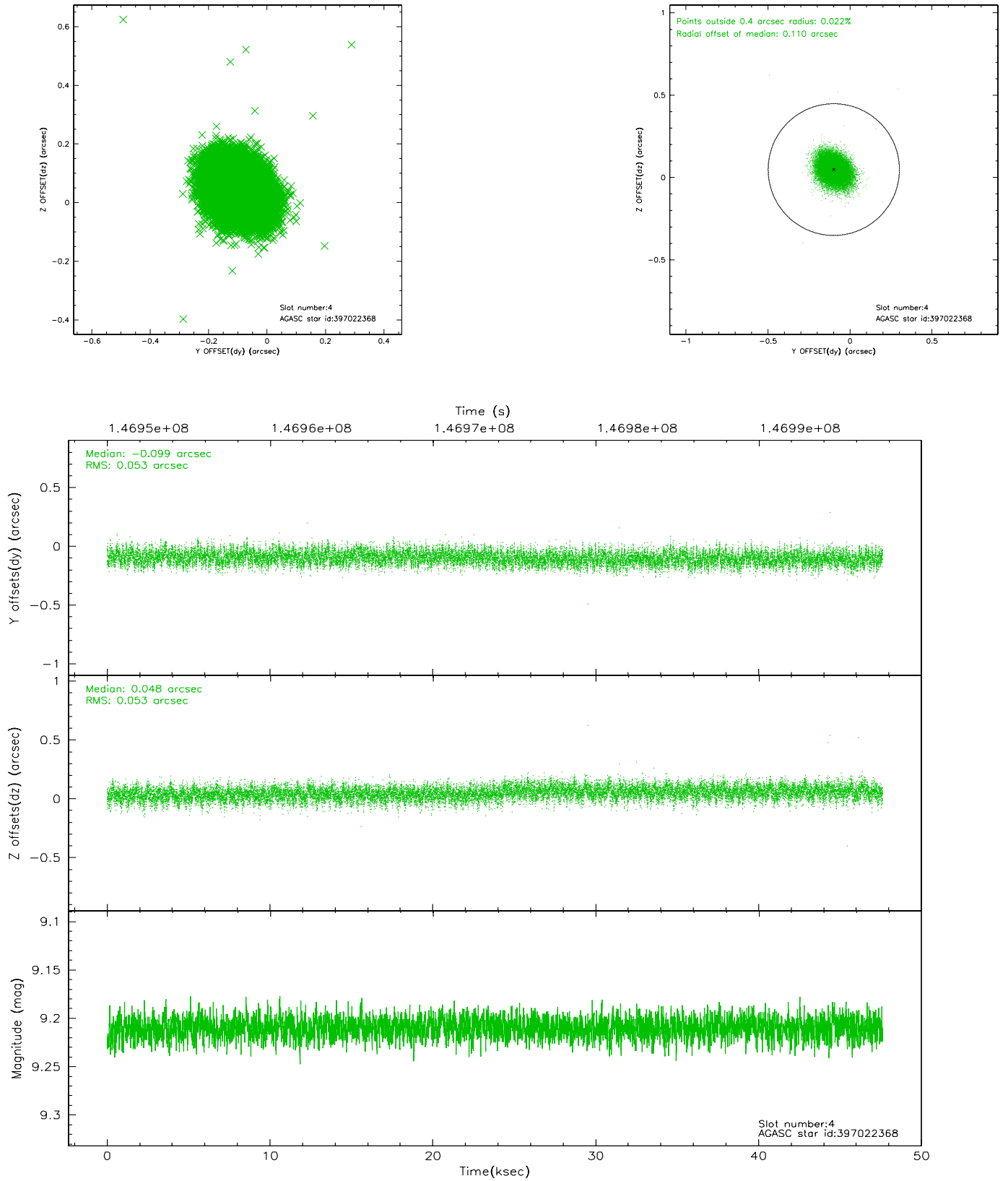
slot	status	id	mag	n_pts	med_dy	med_dz	dr1	dr2	ra	dec	mean_y	mean_z
0	FID	ACIS-S-1	7.19	11615	0.006	0.027	0.011	0.019	0.000000	0.000000	940.90	-1725.16
1	FID	ACIS-S-5	7.24	11615	0.024	0.034	0.009	0.016	0.000000	0.000000	-1808.06	172.45
2	FID	ACIS-S-6	7.36	11614	-0.053	-0.050	0.009	0.015	0.000000	0.000000	406.44	816.28
3	GUIDE	396625032	8.40	23223	0.028	0.046	0.057	0.092	205.129971	39.989839	1018.64	-373.95
4	GUIDE	397022368	9.21	23220	-0.099	0.048	0.079	0.129	205.751450	40.620809	-448.47	2058.75
5	GUIDE	396625736	9.30	23220	0.017	-0.112	0.079	0.127	205.460542	39.768240	2101.02	172.09
6	GUIDE	397022400	9.62	23210	-0.008	0.086	0.114	0.185	204.899339	40.078101	483.67	-841.73
7	GUIDE	396629184	9.58	23220	0.055	-0.073	0.110	0.183	204.749436	39.523706	2170.71	-1986.03

2.4 Star Slots

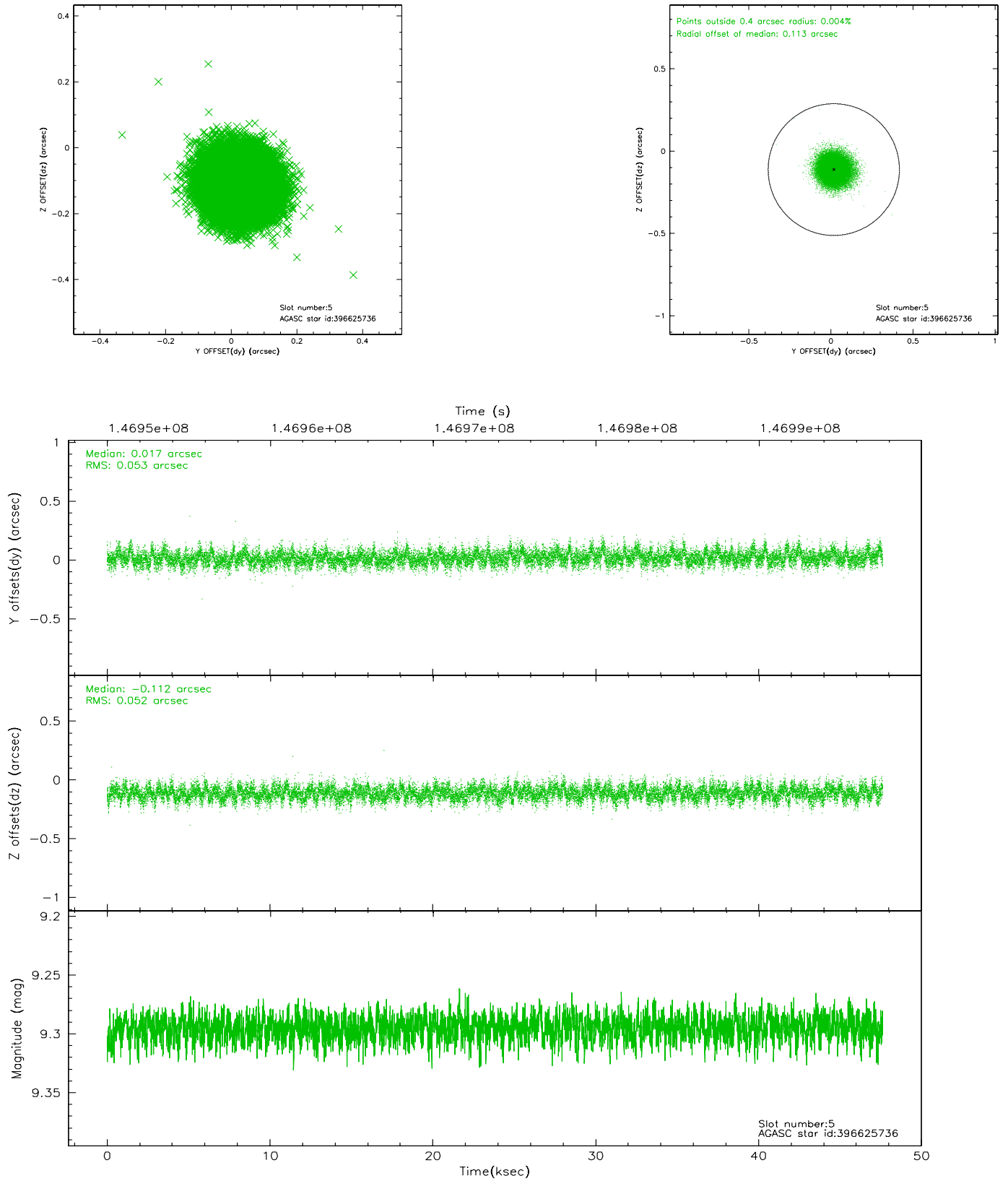
2.4.1 Slot 3



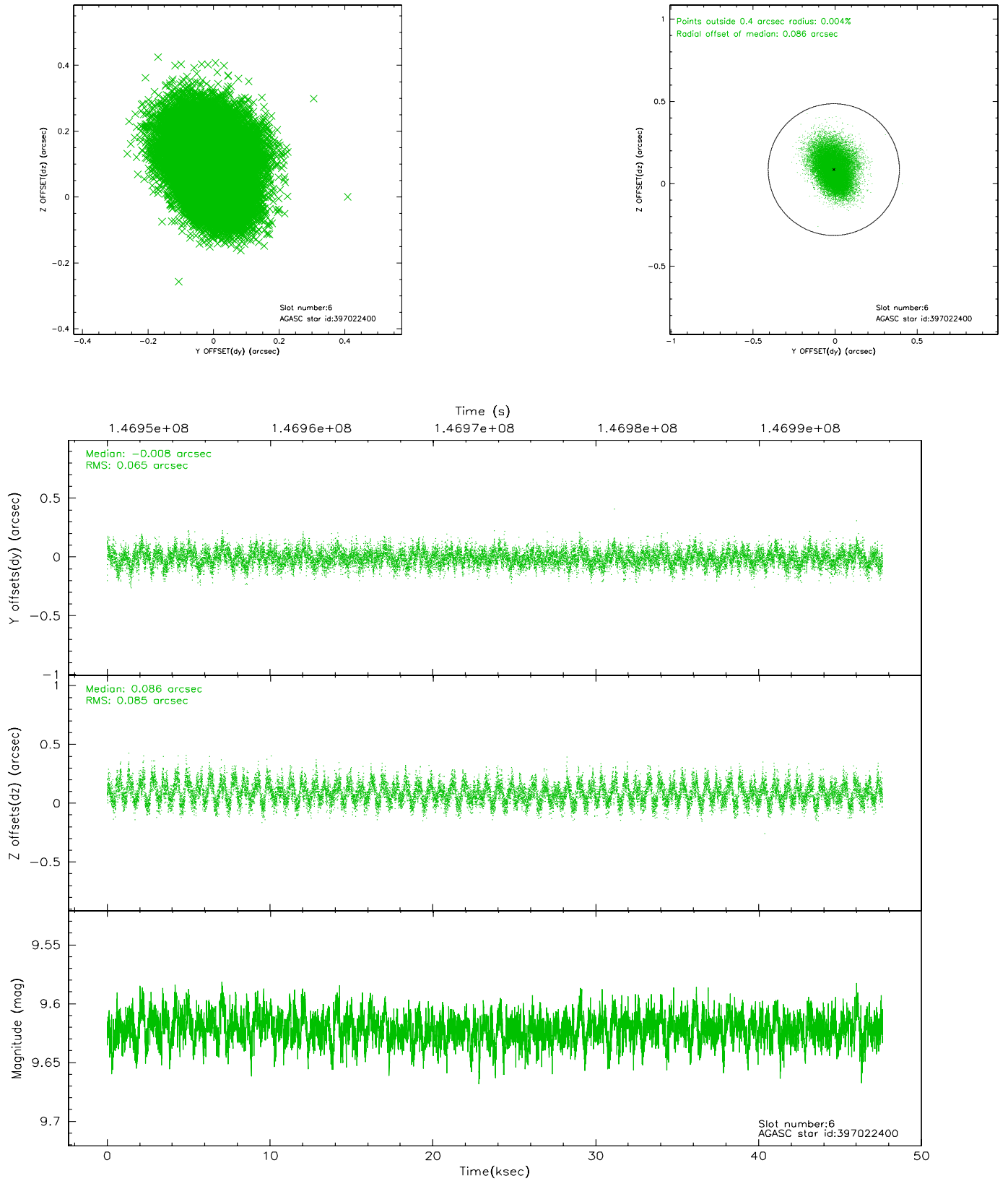
2.4.2 Slot 4



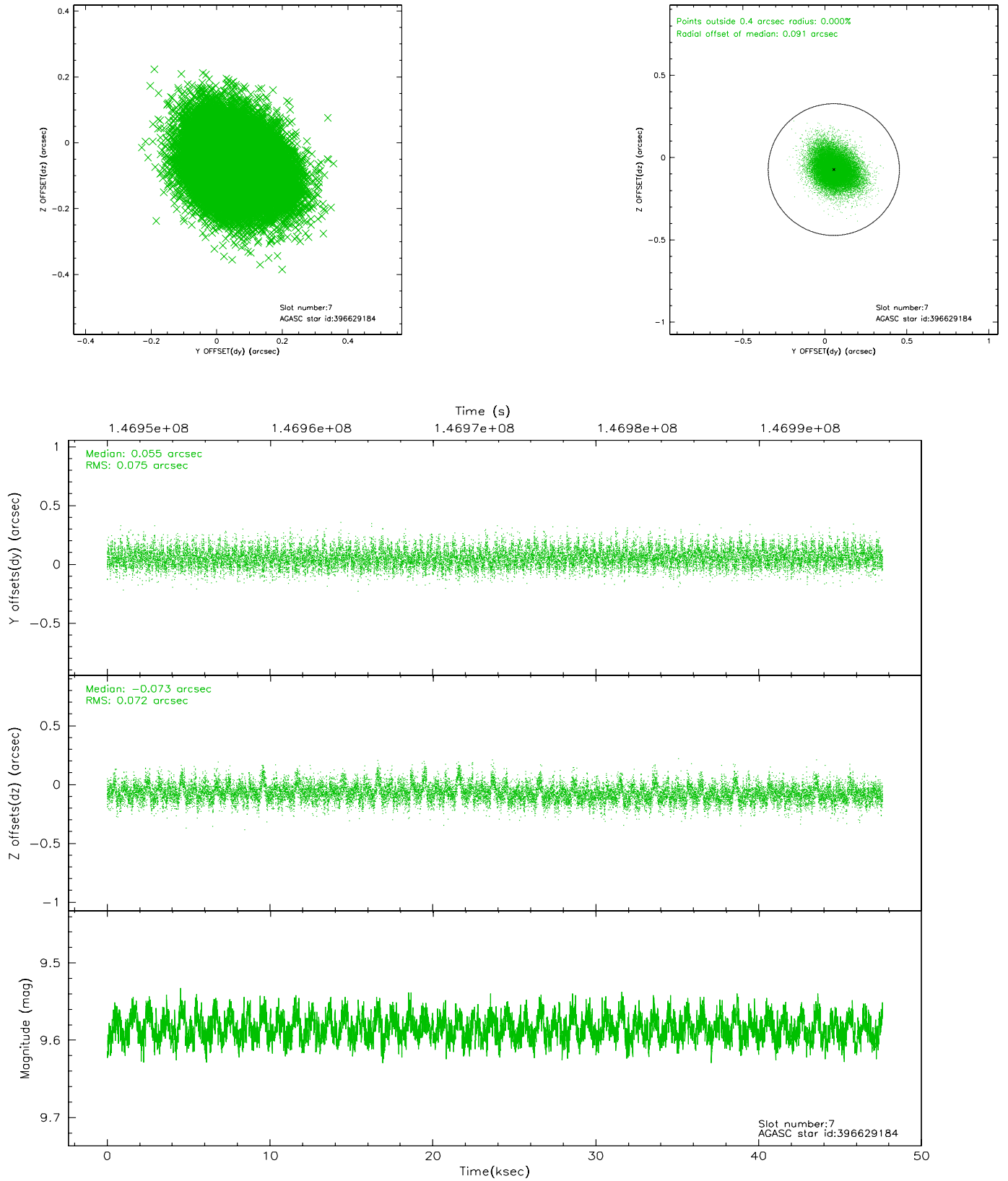
2.4.3 Slot 5



2.4.4 Slot 6

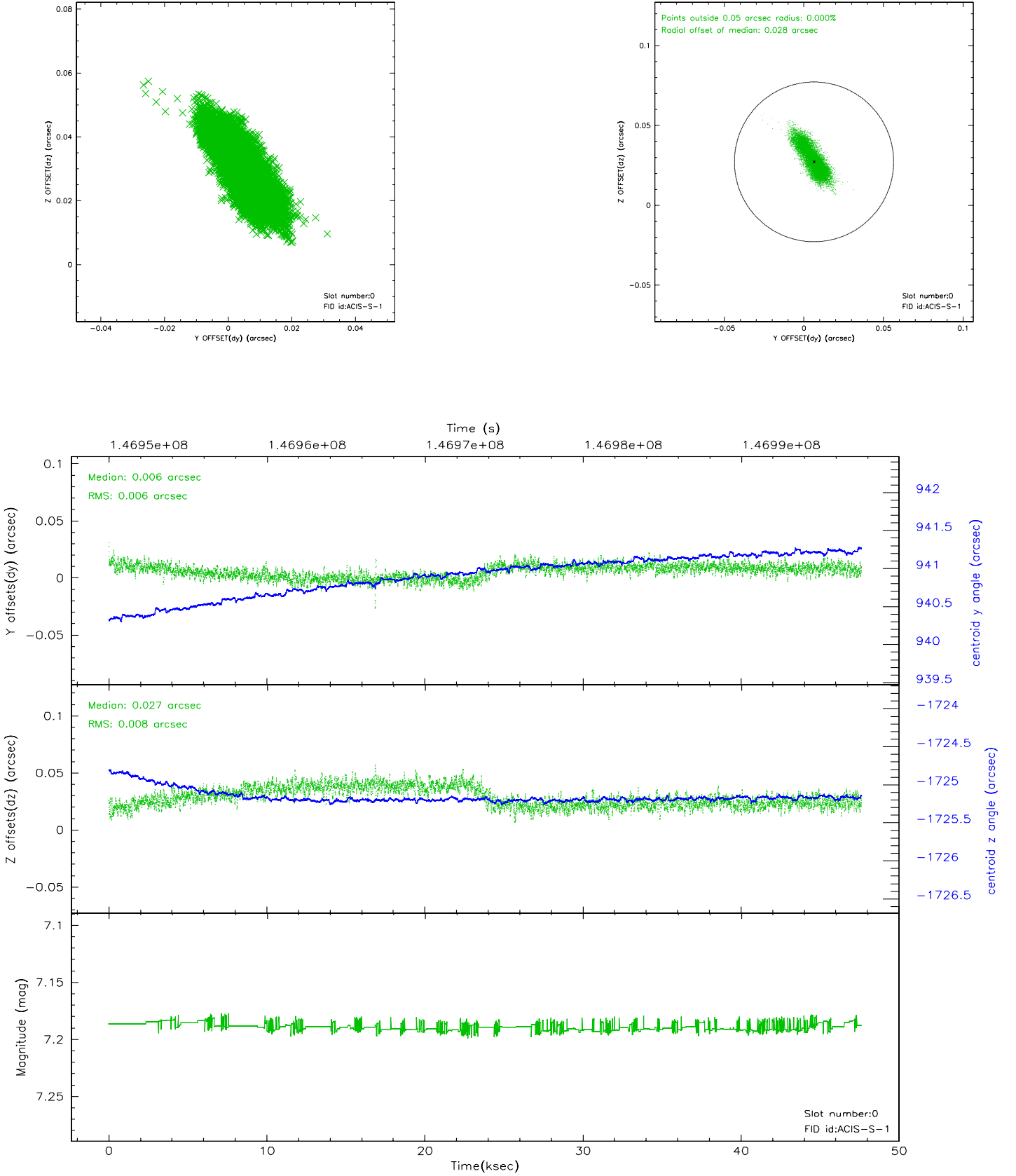


2.4.5 Slot 7

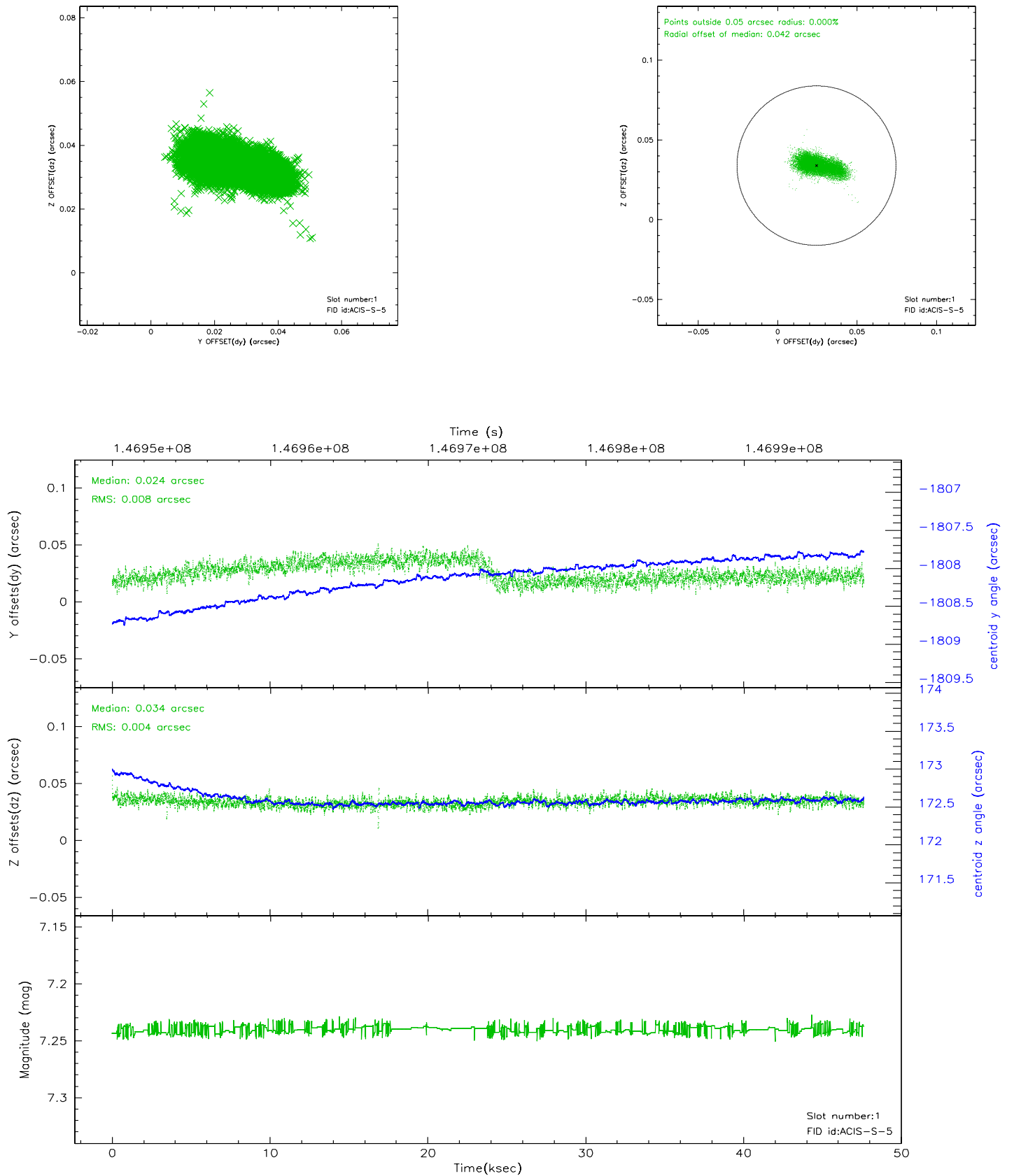


2.5 FID Slots

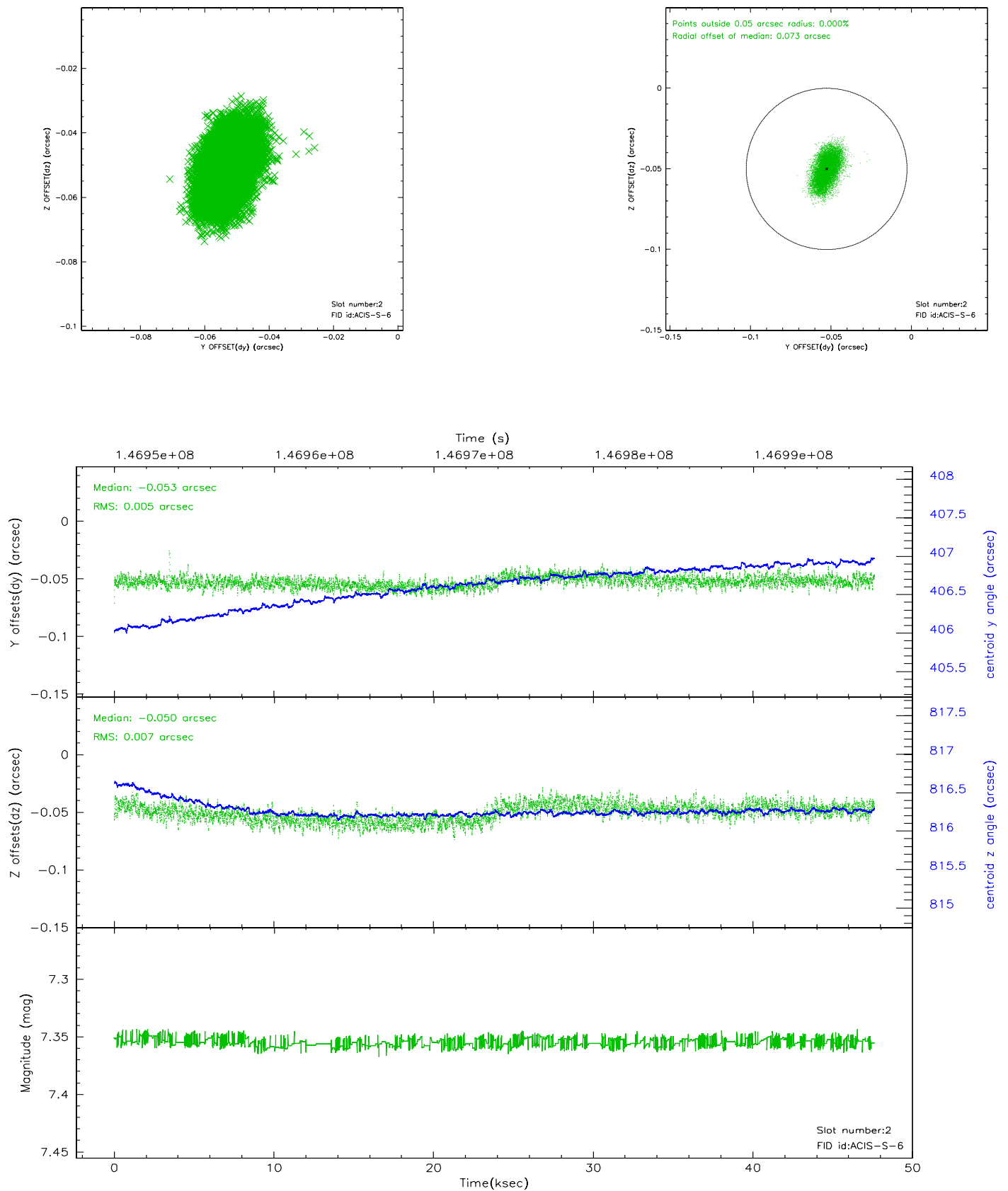
2.5.1 Slot 0



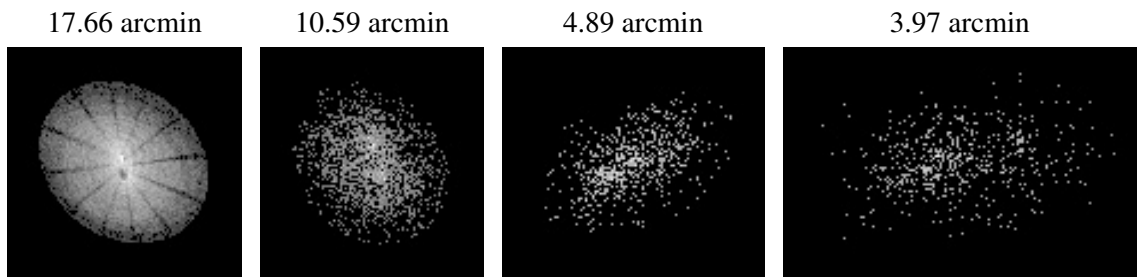
2.5.2 Slot 1



2.5.3 Slot 2



3 Point Sources



A Summary

A.1 Status

V&V Scientist	Jen Lauer
V&V Date (YYYY-MM-DD)	2006.09.29
V&V Edition	1
V&V Disposition and Status	OK
V&V Charge Time	47.615

A.2 Comments

Focal plane temperature is warmer than -118.7 C degrees during the first 2 ksec of this observation. The ACIS spectral response calibration for the front-illuminated chips is less accurate at these warmer temperatures than it is at -119.7 C. The back-illuminated chips are not affected at the focal plane temperatures recorded for this observation. Users whose science objectives depend on the most accurate spectral response (i.e.: fitting line-rich spectra) may notice an effect. Users whose science objectives do not depend on the most accurate spectral response should not notice an effect.