

# V&V Reference Report

## L2 ASCDS Version : 7.6.8.1

Observation 3203 - L2 Version 001  
Chandra X-Ray Center

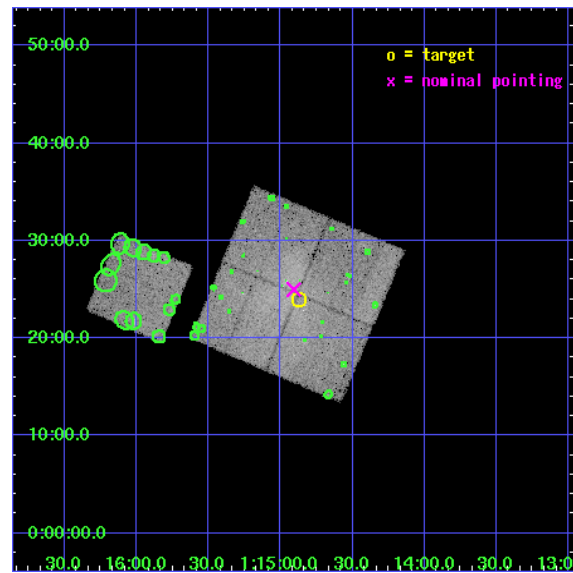
L2 Processing Date : Aug 25 2006

## Contents

<b>1</b>	<b>Front</b>	<b>2</b>
<b>2</b>	<b>OBI</b>	<b>3</b>
2.1	OBI . . . . .	3
2.1.1	Images . . . . .	3
2.1.2	Bias . . . . .	3
2.1.3	Parameters . . . . .	4
2.1.4	Events . . . . .	4
2.2	Compared Parameters . . . . .	5
2.3	Aspect . . . . .	6
2.4	Star Slots . . . . .	9
2.4.1	Slot 3 . . . . .	9
2.4.2	Slot 4 . . . . .	10
2.4.3	Slot 5 . . . . .	11
2.4.4	Slot 6 . . . . .	12
2.4.5	Slot 7 . . . . .	13
2.5	FID Slots . . . . .	14
2.5.1	Slot 0 . . . . .	14
2.5.2	Slot 1 . . . . .	15
2.5.3	Slot 2 . . . . .	16
<b>3</b>	<b>Point Sources</b>	<b>17</b>
<b>A</b>	<b>Summary</b>	<b>18</b>
A.1	Status . . . . .	18
A.2	Comments . . . . .	18

# 1 Front

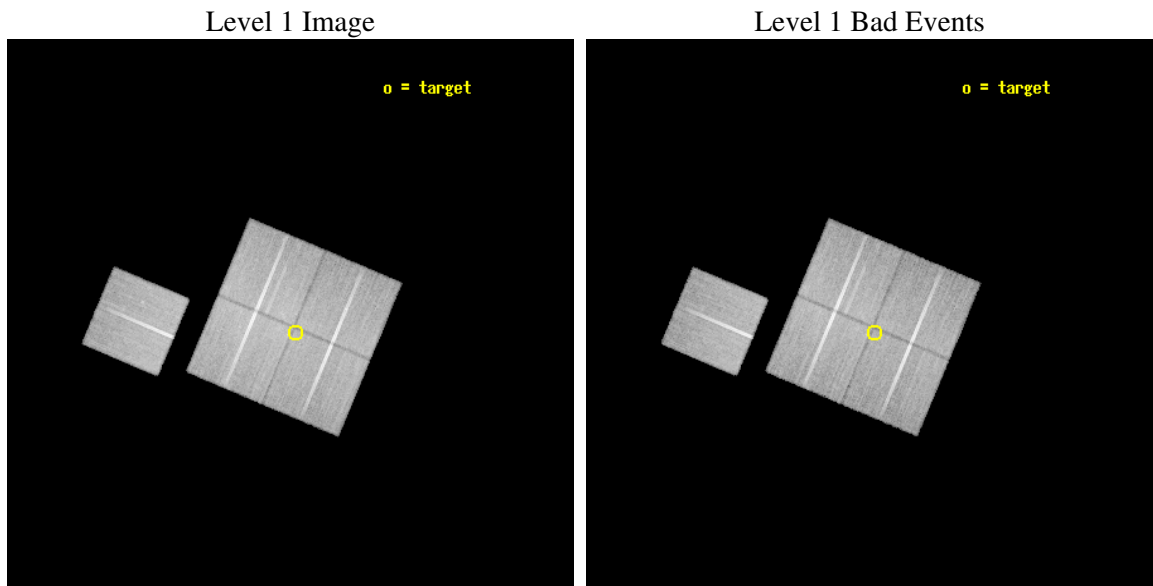
seq_num	800203
obs_id	3203
title	ABELL 168, A RARE MERGER WITH THE SIMPLEST GEOMETRY
observer	Dr Maxim Markevitch
object	A168_OFFSET1
dtcycle	0
cycle	P
ra_targ	18.717917
dec_targ	0.399444
ra_nom	18.726871261639
dec_nom	0.41653551494106
roll_nom	292.83609479632
revision	2
ontime	41118.358950689
livetime	40581.117320103
ontime0	41118.358950689
ontime1	41121.499920934
ontime2	41115.217990443
ontime3	41108.936050028
ontime6	41112.077030152
l2events	123304



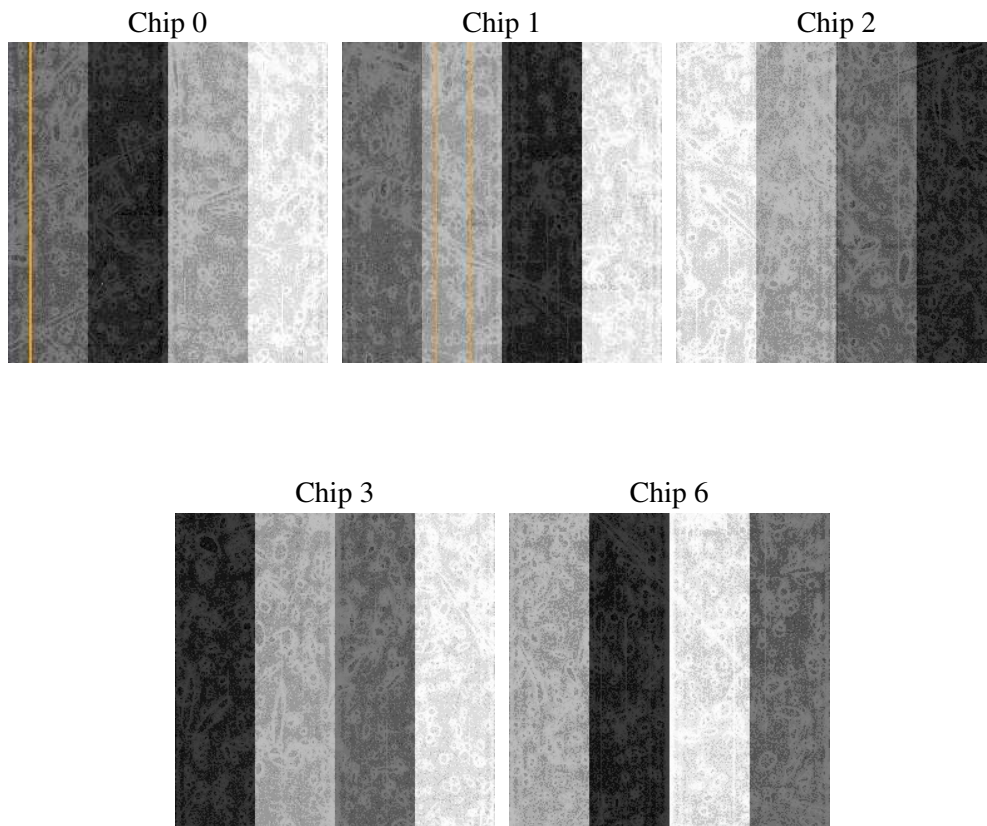
## 2 OBI

### 2.1 OBI

#### 2.1.1 Images



#### 2.1.2 Bias



### 2.1.3 Parameters

obi_num	1
ascdsver	7.6.8.1
caldbver	3.2.3
date	2006-08-25T23:17:41
revision	2

sched_exp_time	41000.000000
ontime	41121.976443216
ontime0	41121.976443216
ontime1	41125.11738354
ontime2	41118.835453048
ontime3	41112.553512633
ontime6	41115.694492757
l1events	1176770

### 2.1.4 Events

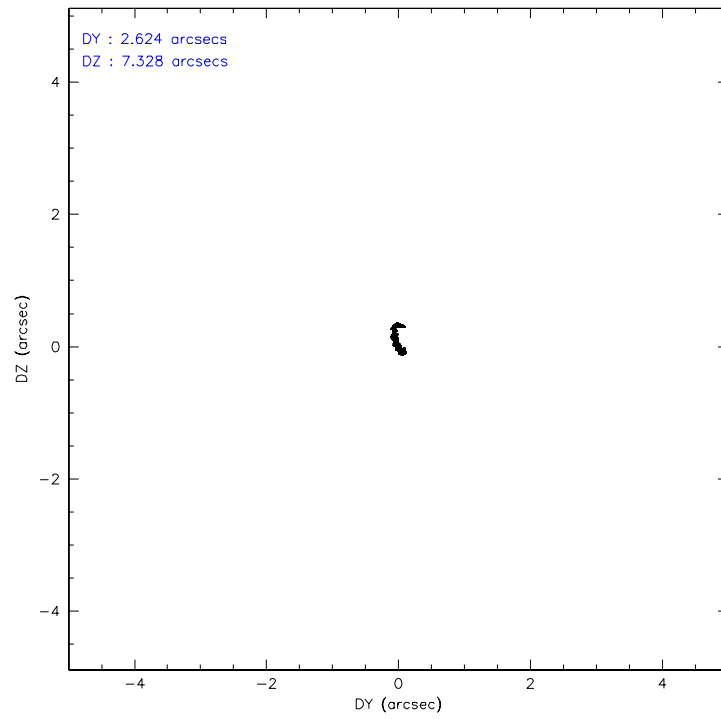
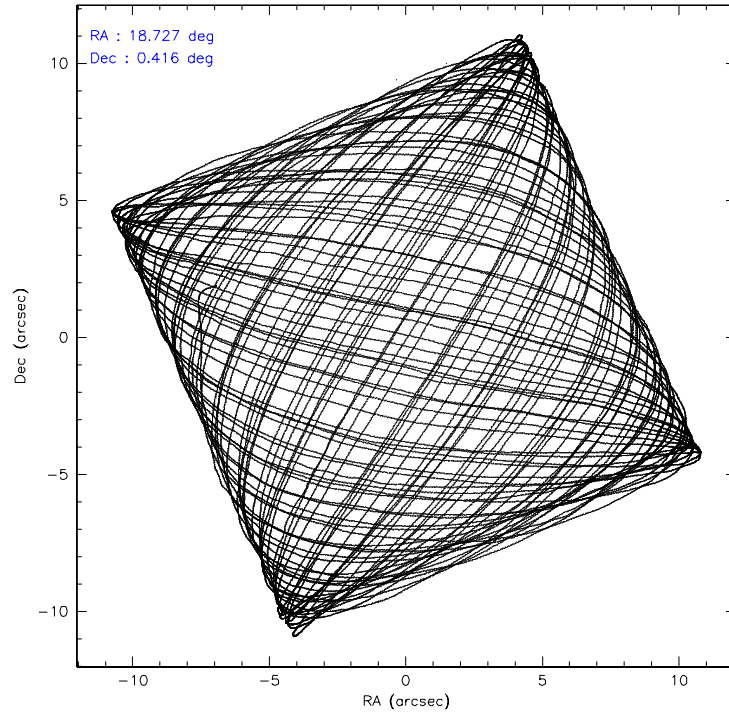
	ccd 0	ccd 1	ccd 2	ccd 3	ccd 6
level 1 events	219169	216427	259141	243558	238475
rejected events	186107	187904	220760	216674	212857
rejected %	84%	86%	85%	88%	89%

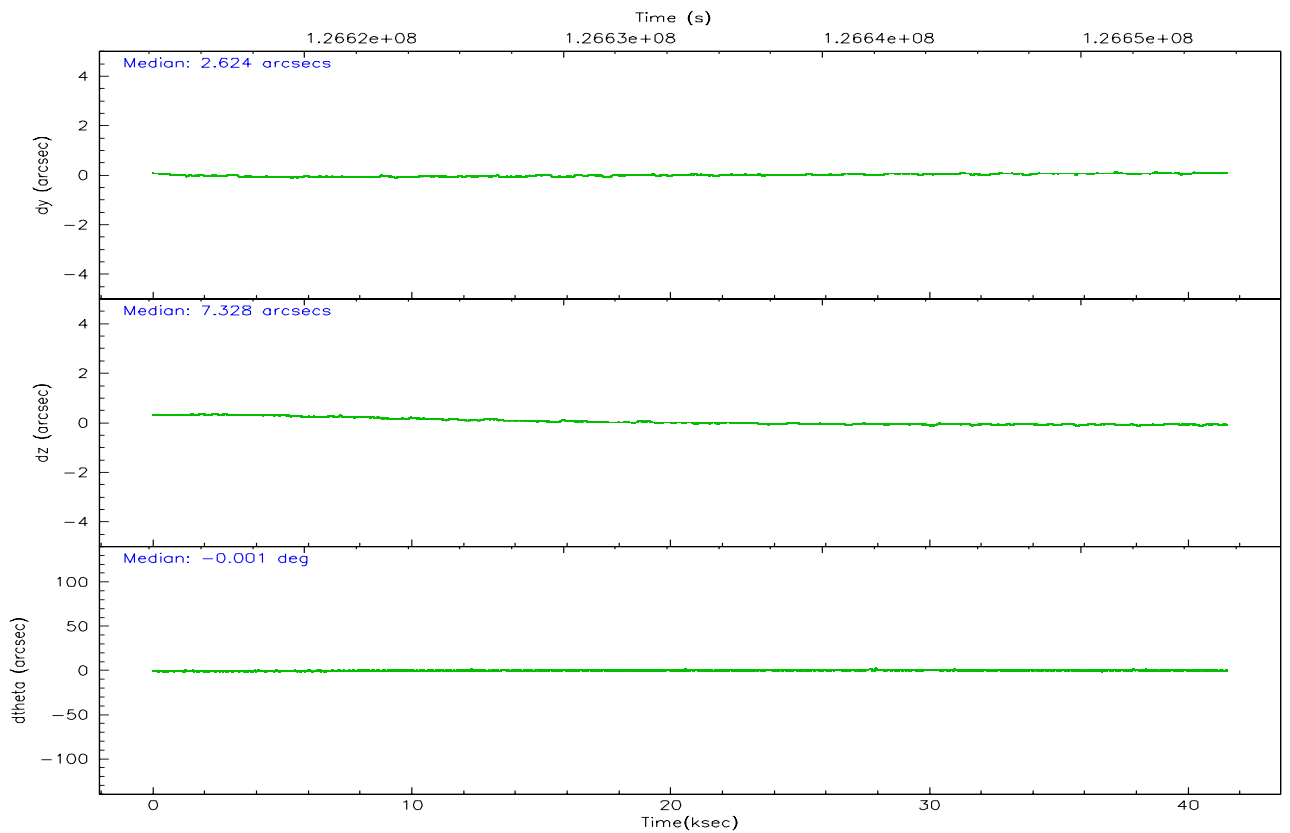
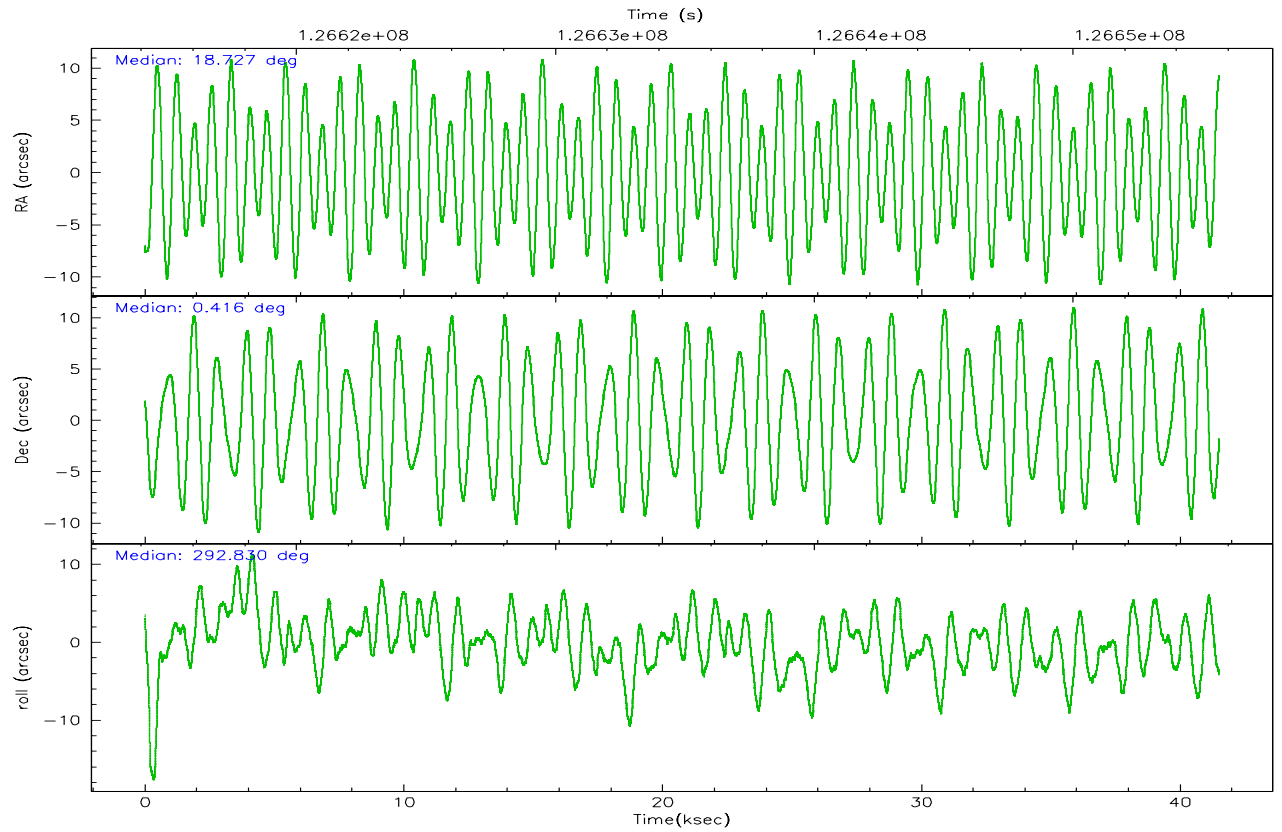
	ccd 0	ccd 1	ccd 2	ccd 3	ccd 6
grade 0 events	16490	12284	20965	12988	10162
	7%	5%	8%	5%	4%
grade 1 events	110	97	141	113	93
	0%	0%	0%	0%	0%
grade 2 events	7008	5873	7638	5002	5949
	3%	2%	2%	2%	2%
grade 3 events	2720	2896	2608	2383	2503
	1%	1%	1%	0%	1%
grade 4 events	2620	2766	2790	2369	2537
	1%	1%	1%	0%	1%
grade 5 events	6745	7477	6437	7580	7769
	3%	3%	2%	3%	3%
grade 6 events	4226	4706	4381	4148	4470
	1%	2%	1%	1%	1%
grade 7 events	179250	180328	214181	208975	204992
	81%	83%	82%	85%	85%

## 2.2 Compared Parameters

Parameter	Planned	Actual	Parameter	Planned	Actual
Instrument	ACIS	ACIS	Obspar format version number	6	6
Detector	ACIS-01236	ACIS-01236	Obspar file type	PREDICTED	ACTUAL
Grating	NONE	NONE	Obspar update status	NONE	UPDATED
Data mode	VFAINT	VFAINT	On-chip summing requested	N	N
Observation mode	POINTING	POINTING	Subarray requested	NONE	NONE
Pointing RA	18.704985	18.72687126163898	Alternating exposures requested	N	N
Pointing Dec	0.433059	0.4165355149410572	Primary exposure time	0.000000	3.1
Pointing Roll	292.627566	292.8360947963222			
SIM focus pos (mm)	-0.782348	-0.7809083437167272			
SIM defocus (mm)	0	0.001439871863259334			
SIM translation stage pos (mm)	-233.592463	-233.5874344608287			
SIM translation stage offset (mm)	0	-0.005018542100998502			
Observation start time	126614649.184000	126613529.27723			
Observation start date	2002-01-05T10:43:05	2002-01-05T10:25:29			
Observation end time	126655649.184000	126656584.40397			
Observation end date	2002-01-05T22:06:25	2002-01-05T22:23:04			
Read mode	TIMED	TIMED			

## 2.3 Aspect





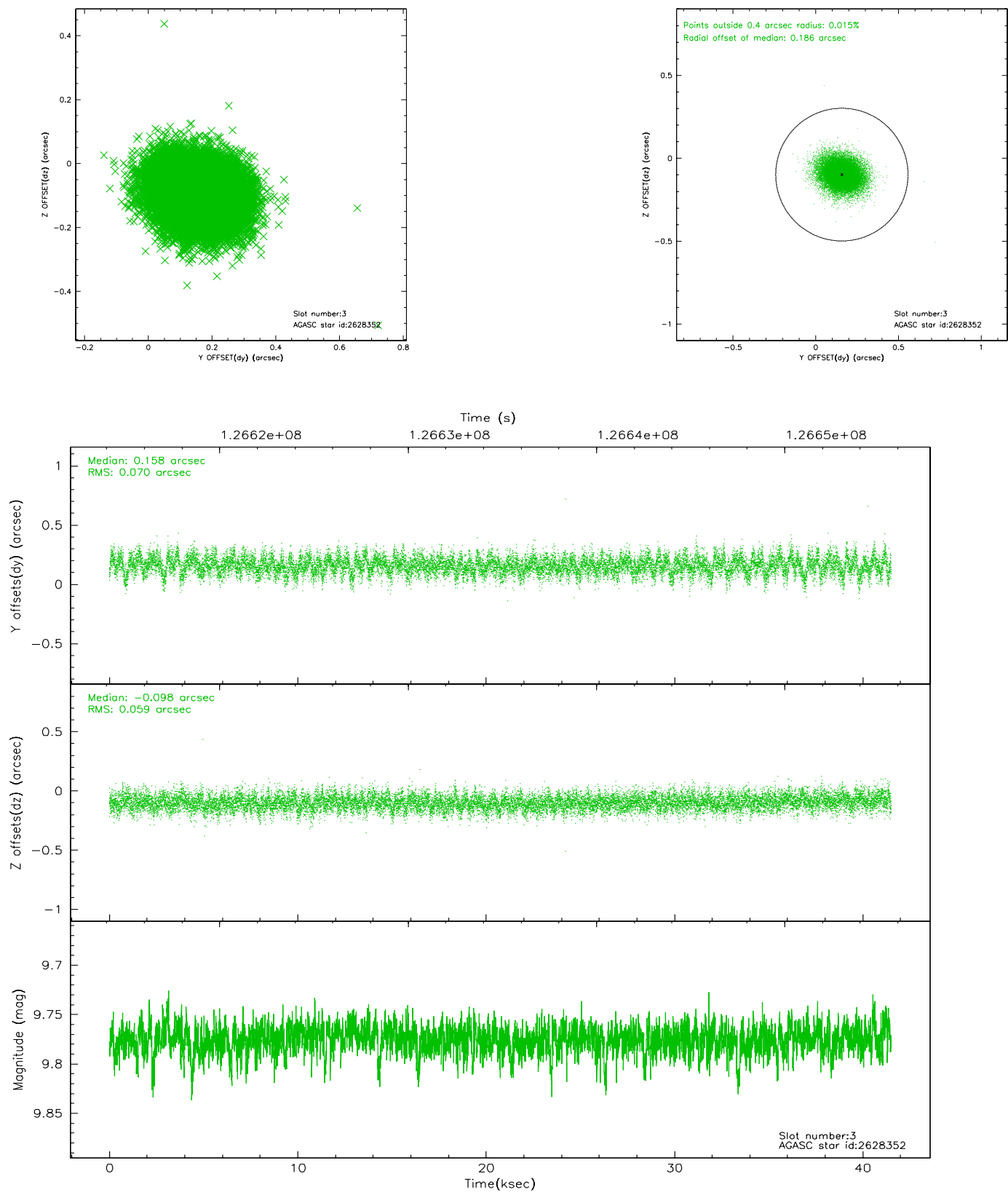
### Slot Statistics

slot	status	id	mag	n_pts	med_dy	med_dz	dr1	dr2	ra	dec	mean_y	mean_z
0	FID	ACIS-I-1	7.24	10112	-0.028	0.060	0.010	0.019	0.000000	0.000000	937.13	-830.74
1	FID	ACIS-I-5	7.24	10107	-0.010	0.042	0.007	0.013	0.000000	0.000000	-1810.92	1066.78
2	FID	ACIS-I-6	7.26	10117	-0.053	-0.032	0.008	0.015	0.000000	0.000000	402.69	1711.17
3	GUIDE	2628352	9.78	20203	0.158	-0.098	0.097	0.159	18.930347	0.017661	1691.84	172.76
4	GUIDE	2626464	7.13	20233	-0.246	0.046	0.067	0.107	18.898535	0.912454	-1326.08	1306.21
5	GUIDE	2624208	9.00	20217	0.088	-0.101	0.070	0.112	18.631908	0.152341	830.85	-632.32
6	GUIDE	2626048	9.45	20215	0.109	0.139	0.125	0.203	19.277853	0.298245	1240.54	1716.35
7	GUIDE	2621728	9.45	20219	-0.106	0.010	0.094	0.151	18.549461	0.649533	-935.56	-217.71

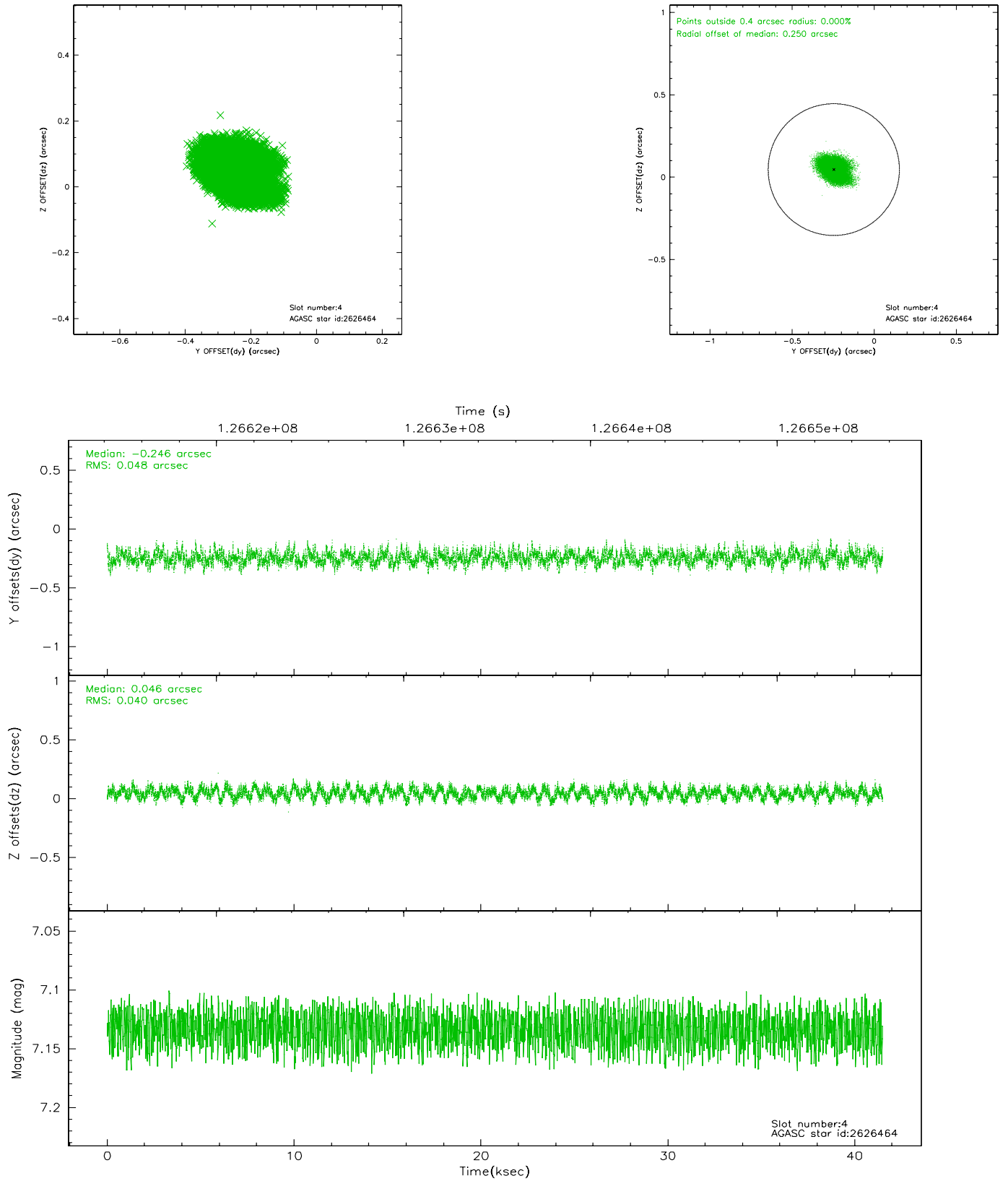


## 2.4 Star Slots

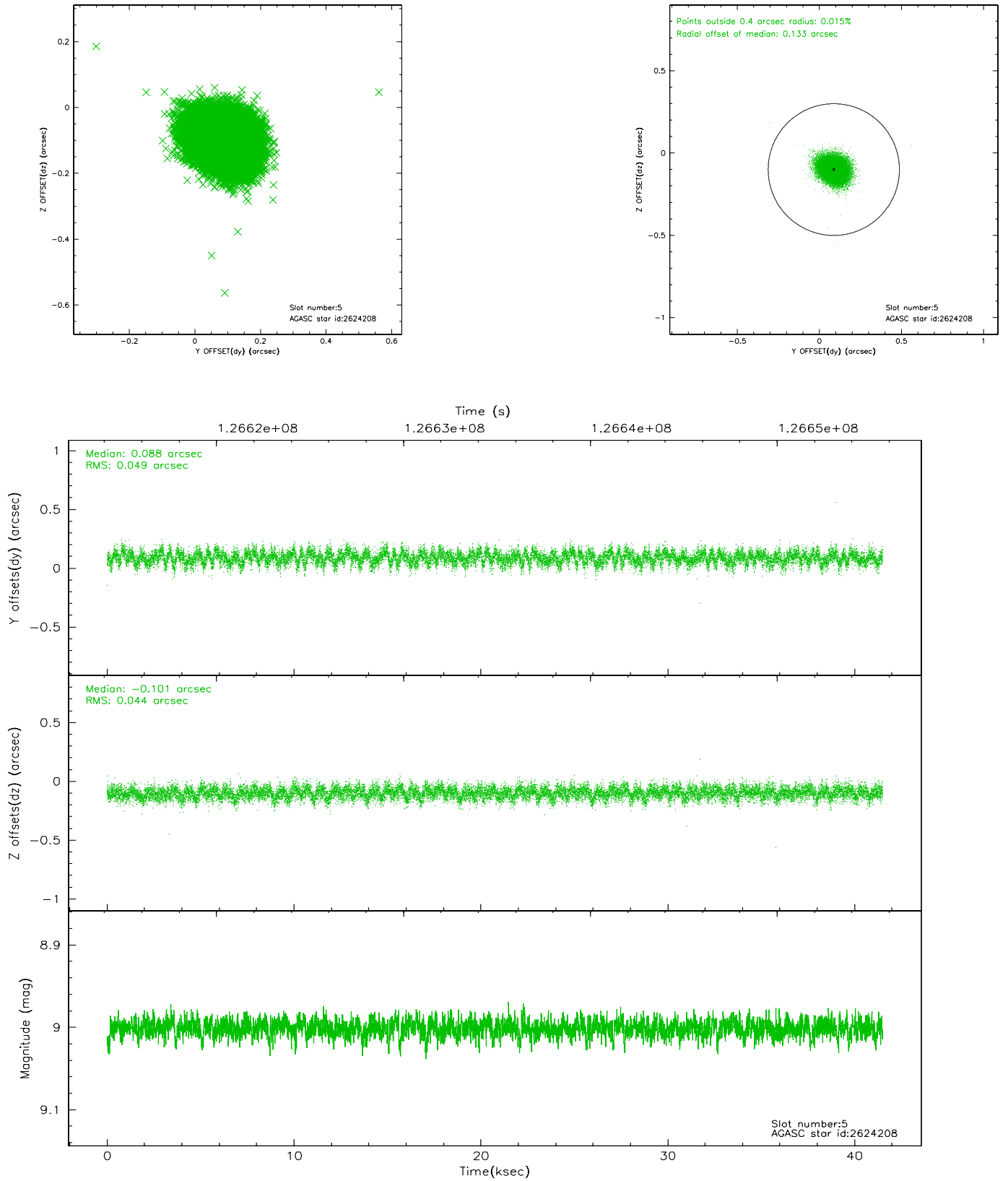
### 2.4.1 Slot 3



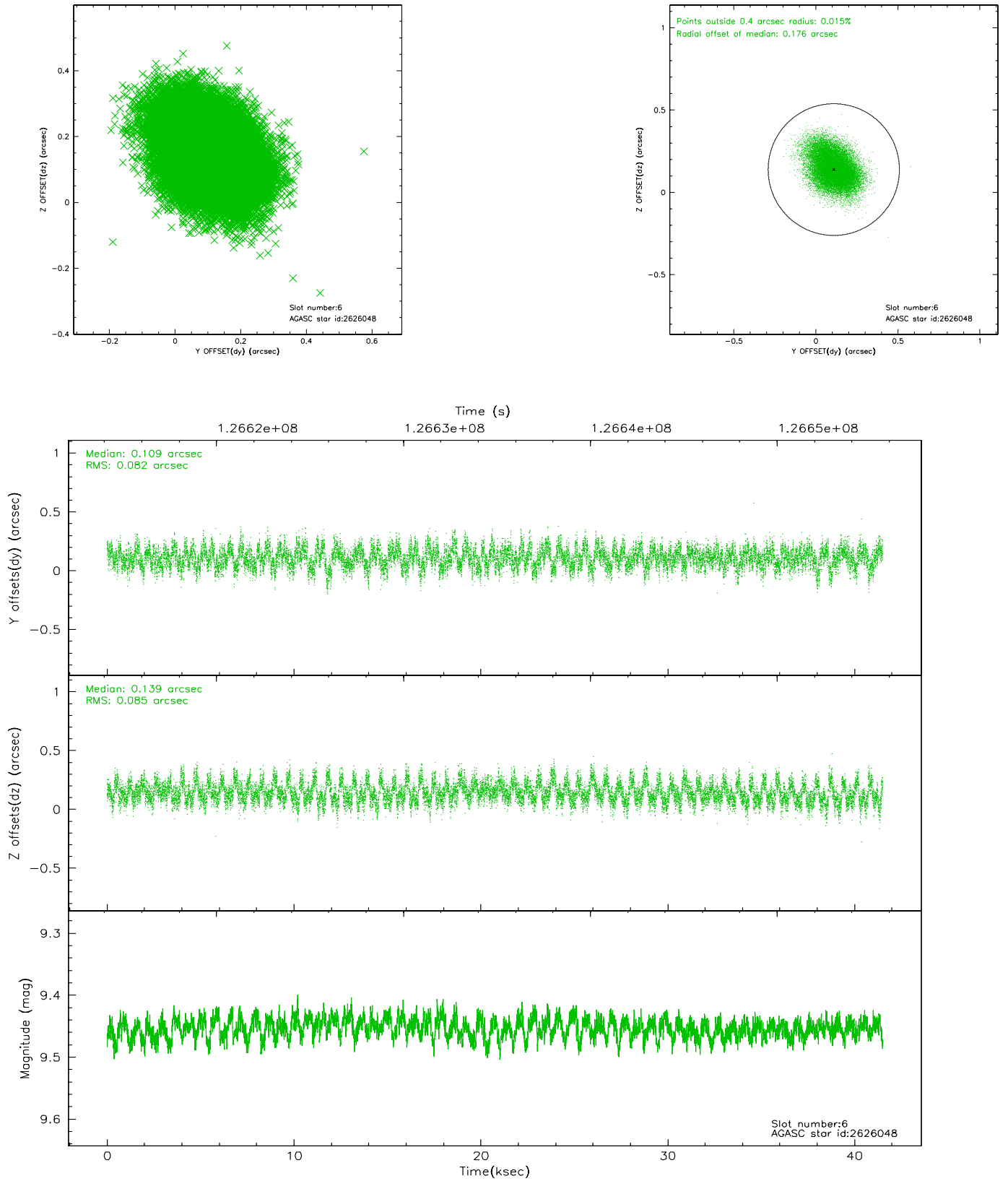
## 2.4.2 Slot 4



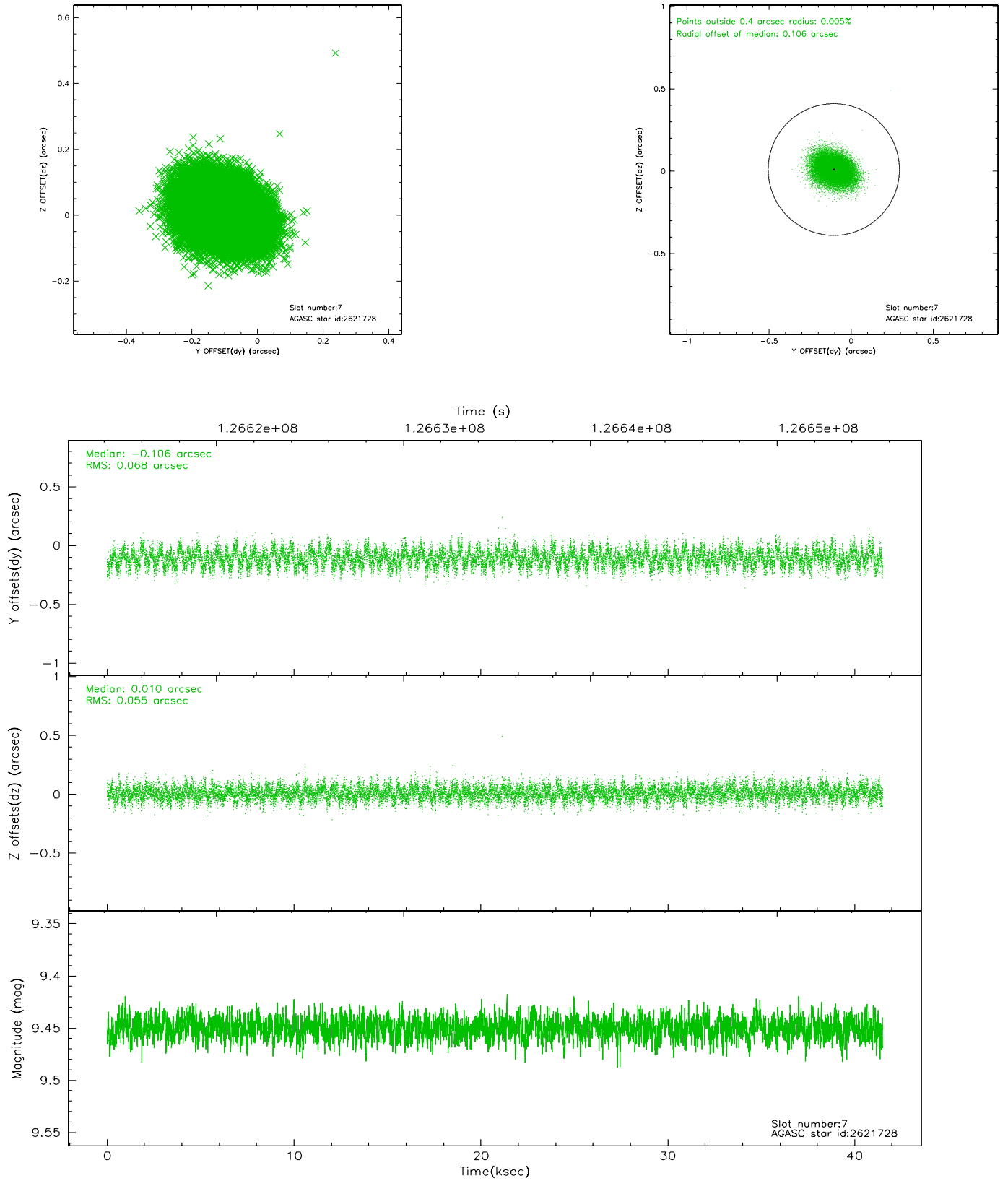
### 2.4.3 Slot 5



## 2.4.4 Slot 6

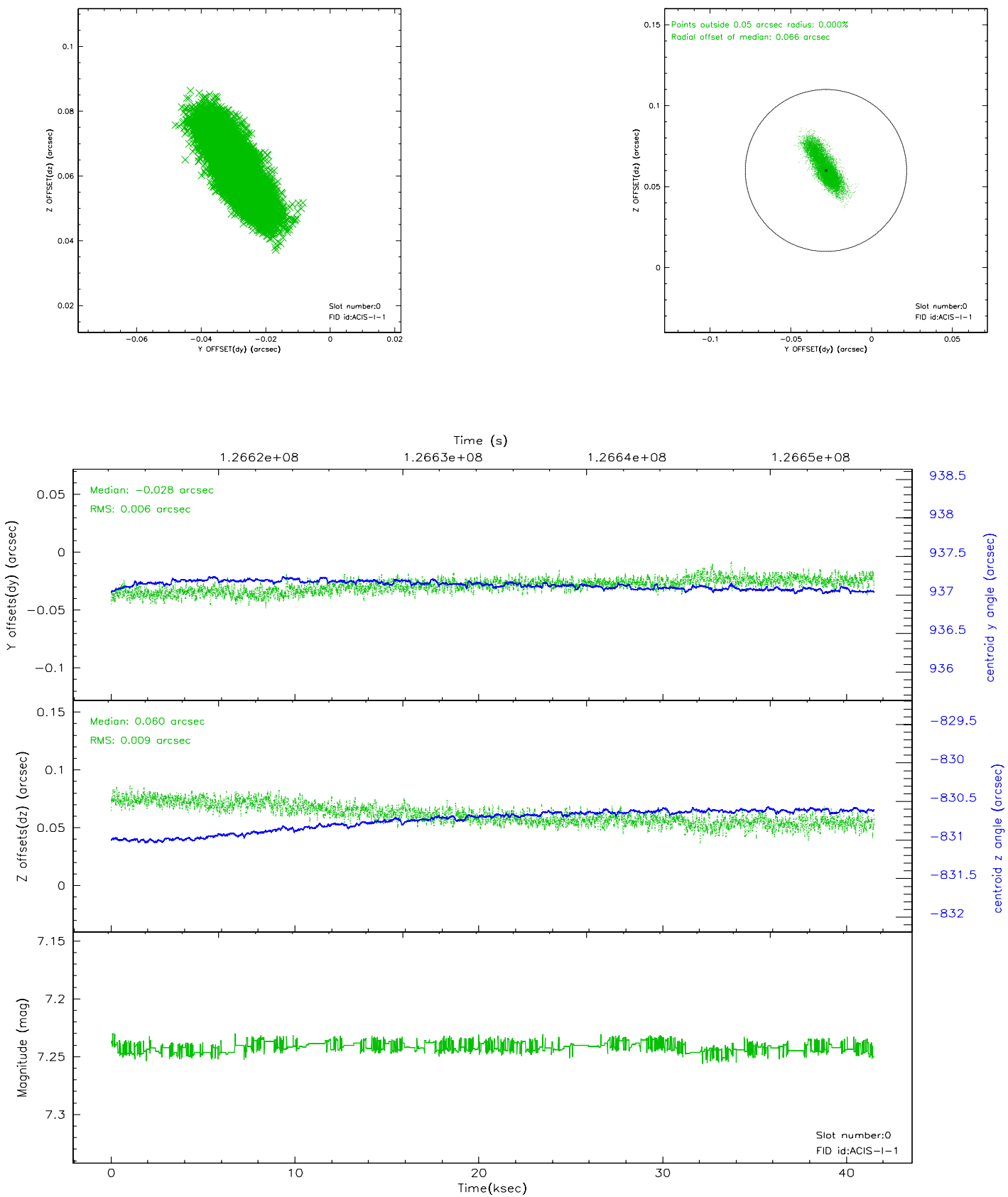


## 2.4.5 Slot 7

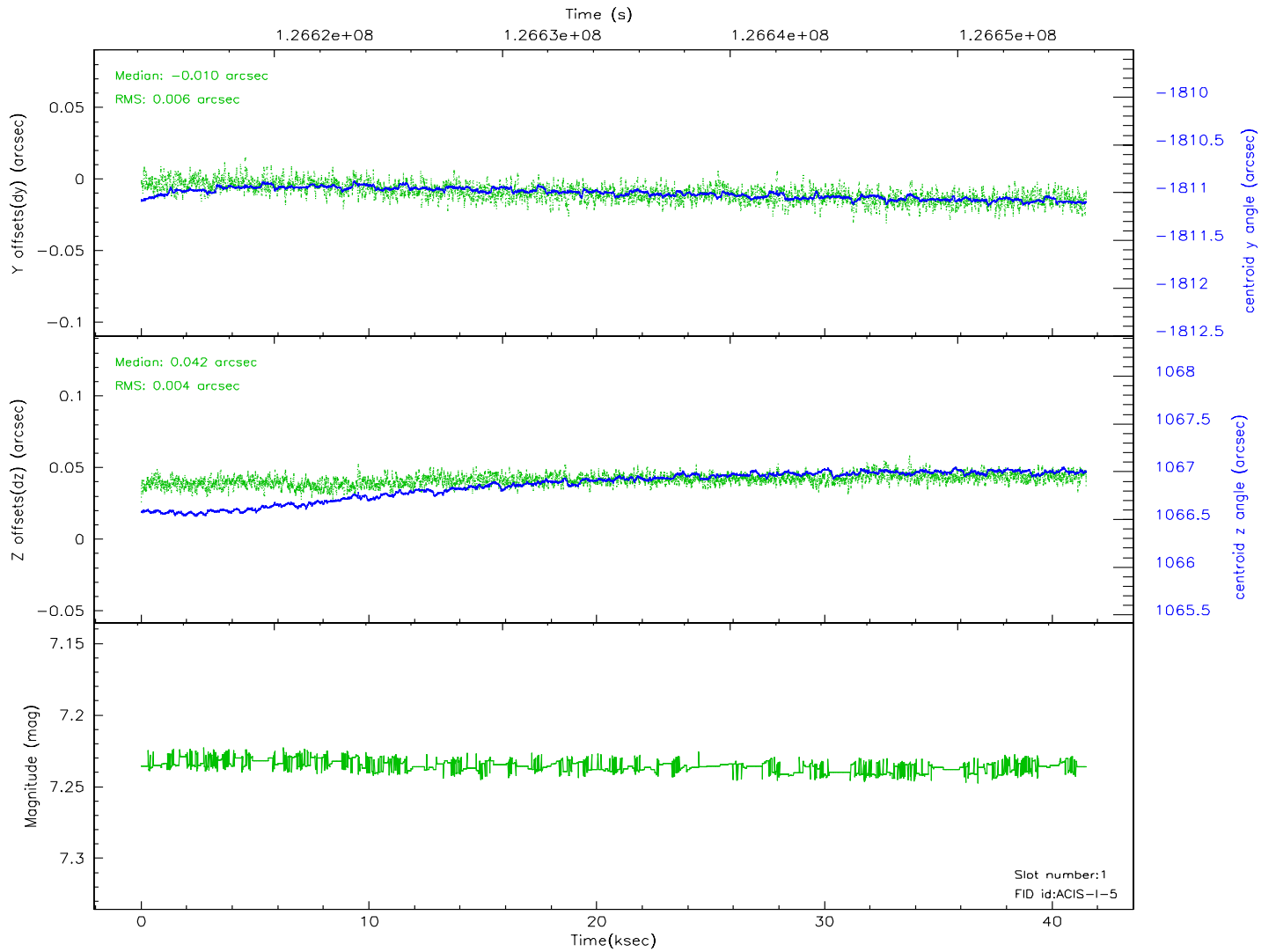
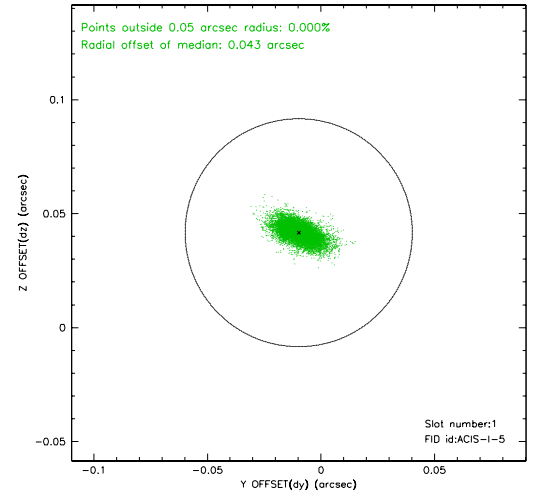
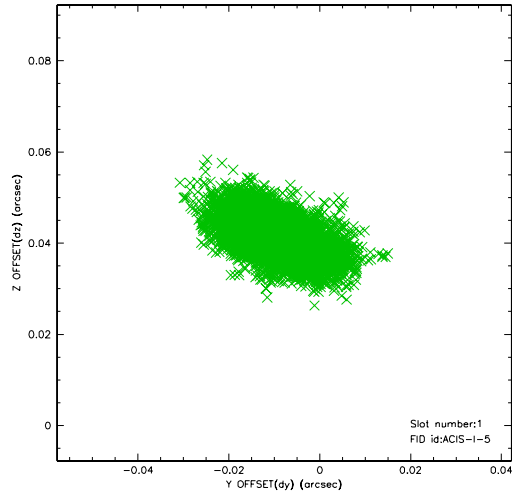


## 2.5 FID Slots

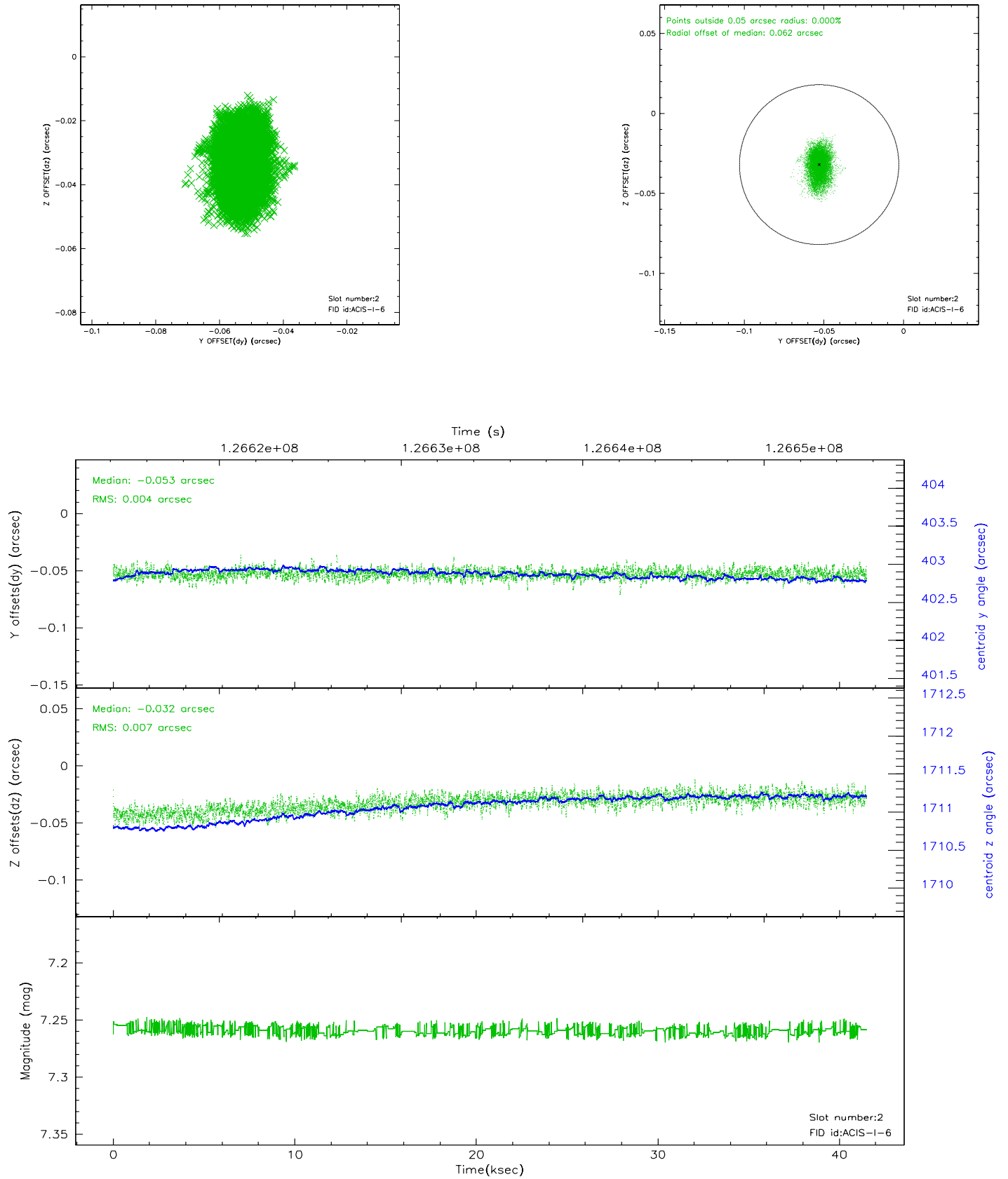
### 2.5.1 Slot 0



## 2.5.2 Slot 1

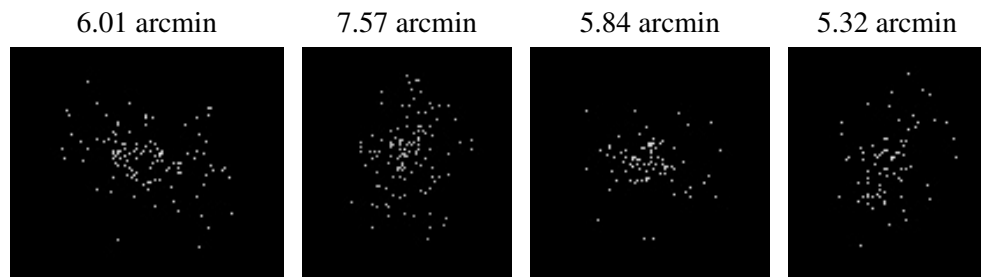


### 2.5.3 Slot 2





### 3 Point Sources



## A Summary

### A.1 Status

V&V Scientist	Jen Lauer
V&V Date (YYYY-MM-DD)	2006.08.28
V&V Edition	1
V&V Disposition and Status	OK
V&V Charge Time	41.118

### A.2 Comments