

V&V Reference Report

L2 ASCDS Version : 7.6.10

Observation 3173 - L2 Version 002
Chandra X-Ray Center

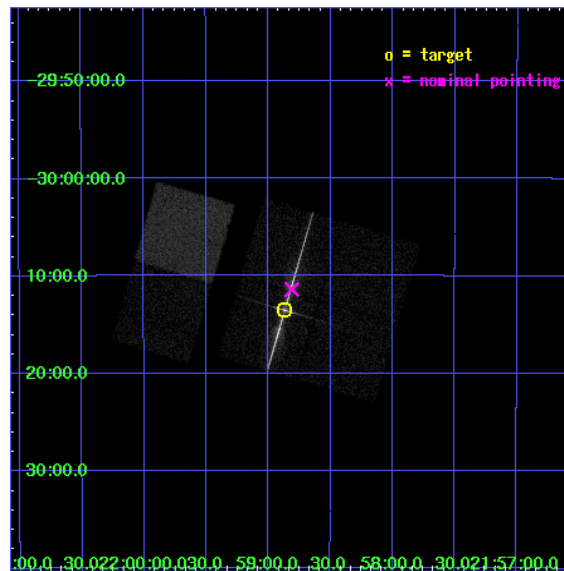
L2 Processing Date : Feb 28 2007

Contents

1	Front	2
2	OBI	3
2.1	OBI	3
2.1.1	Images	3
2.1.2	Bias	3
2.1.3	Parameters	4
2.1.4	Events	4
2.2	Compared Parameters	5
2.3	Aspect	6
2.4	Star Slots	9
2.4.1	Slot 3	9
2.4.2	Slot 4	10
2.4.3	Slot 5	11
2.4.4	Slot 6	12
2.4.5	Slot 7	13
2.5	FID Slots	14
2.5.1	Slot 0	14
2.5.2	Slot 1	15
2.5.3	Slot 2	16
3	Gratings	17
3.1	LETG Arm	17
A	Summary	19
A.1	Status	19
A.2	Comments	19

1 Front

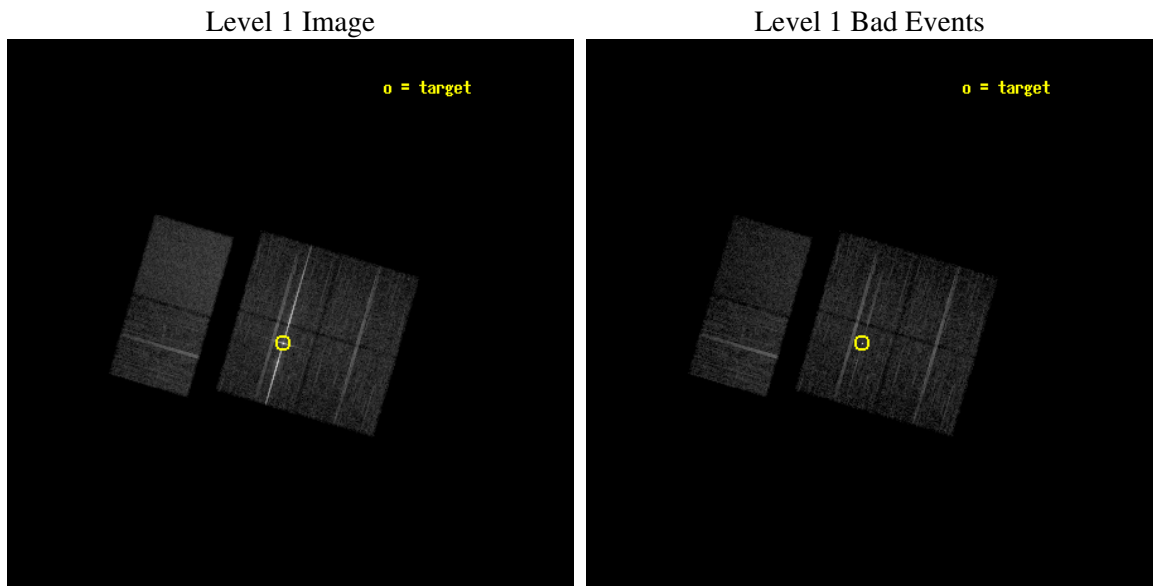
seq_num	790067
obs_id	3173
title	AO3 LETG/ACIS-I CALIBRATION OBSERVATIONS OF PKS2155-304
observer	Dr. CXC Calibration
object	PKS2155-304
dtcycle	0
cycle	P
ra_targ	329.716667
dec_targ	-30.225556
ra_nom	329.70258228452
dec_nom	-30.190148524808
roll_nom	286.39211131718
revision	4
ontime	7721.6000071913
livetime	7623.8244585109
ontime0	7721.6000071913
ontime1	7721.6000071913
ontime2	7721.6000071913
ontime3	7721.6000071913
ontime6	7721.6000071913
ontime7	7721.6000071913
l2events	107442



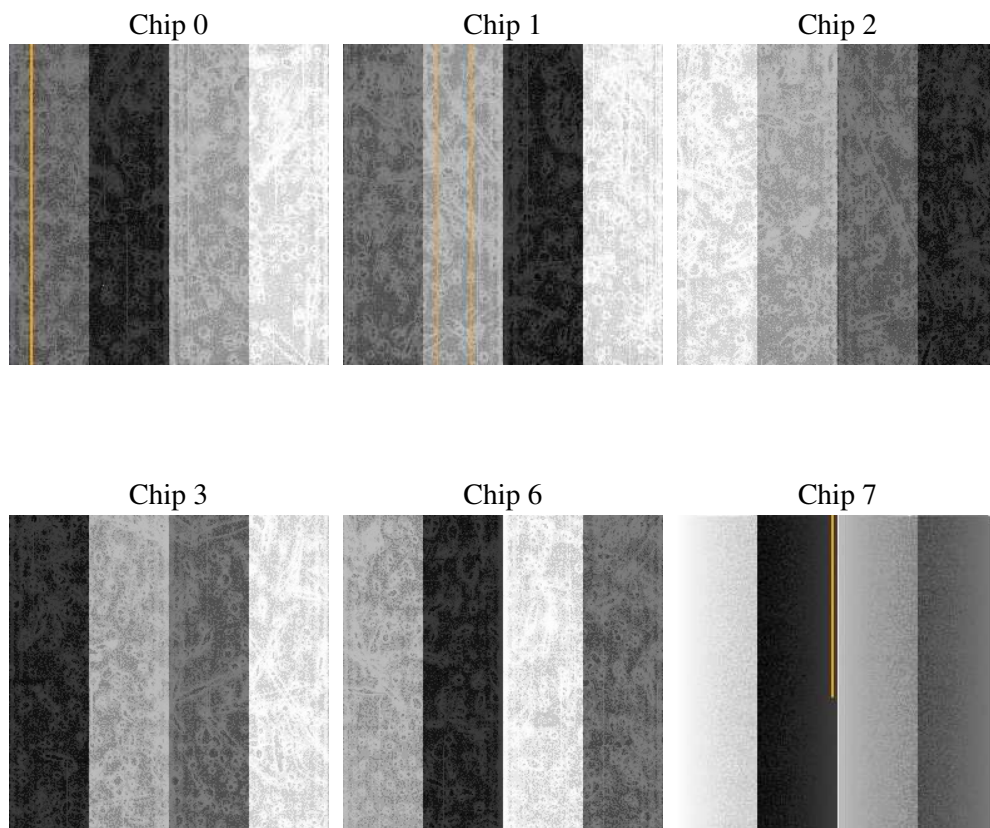
2 OBI

2.1 OBI

2.1.1 Images



2.1.2 Bias



2.1.3 Parameters

obi_num	1
ascdsver	7.6.10
caldbver	3.3.0
date	2007-01-20T10:30:07
revision	2

sched_exp_time	8000.000000
ontime	7721.6000071913
ontime0	7721.6000071913
ontime1	7721.6000071913
ontime2	7721.6000071913
ontime3	7721.6000071913
ontime6	7721.6000071913
ontime7	7721.6000071913
l1events	370862

2.1.4 Events

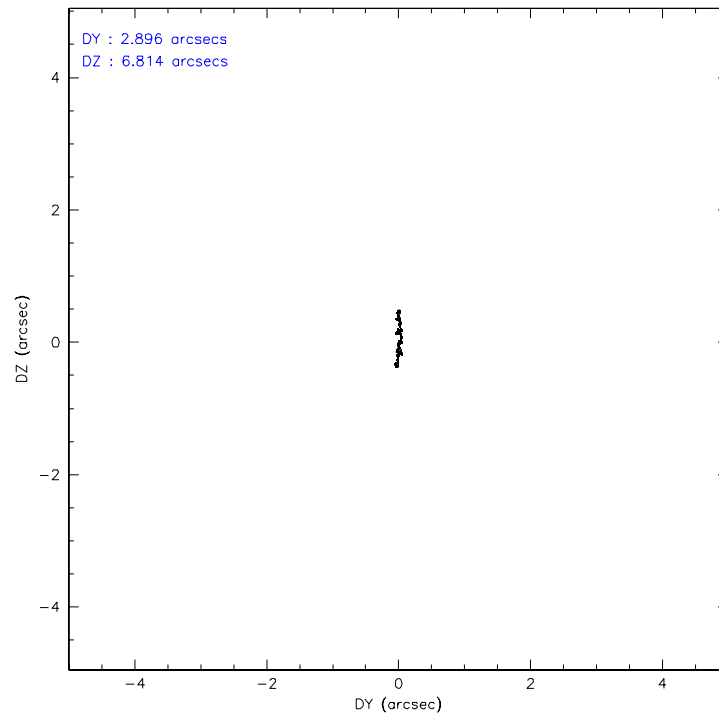
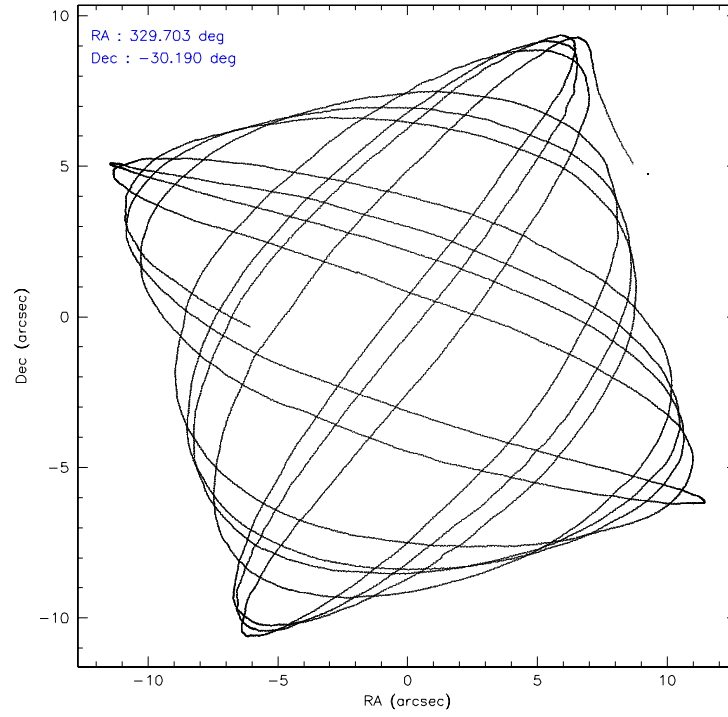
	ccd 0	ccd 1	ccd 2	ccd 3	ccd 6	ccd 7
level 1 events	46808	46918	89308	69905	53455	64468
rejected events	40764	40888	46196	43445	47522	37920
rejected %	87%	87%	51%	62%	88%	58%

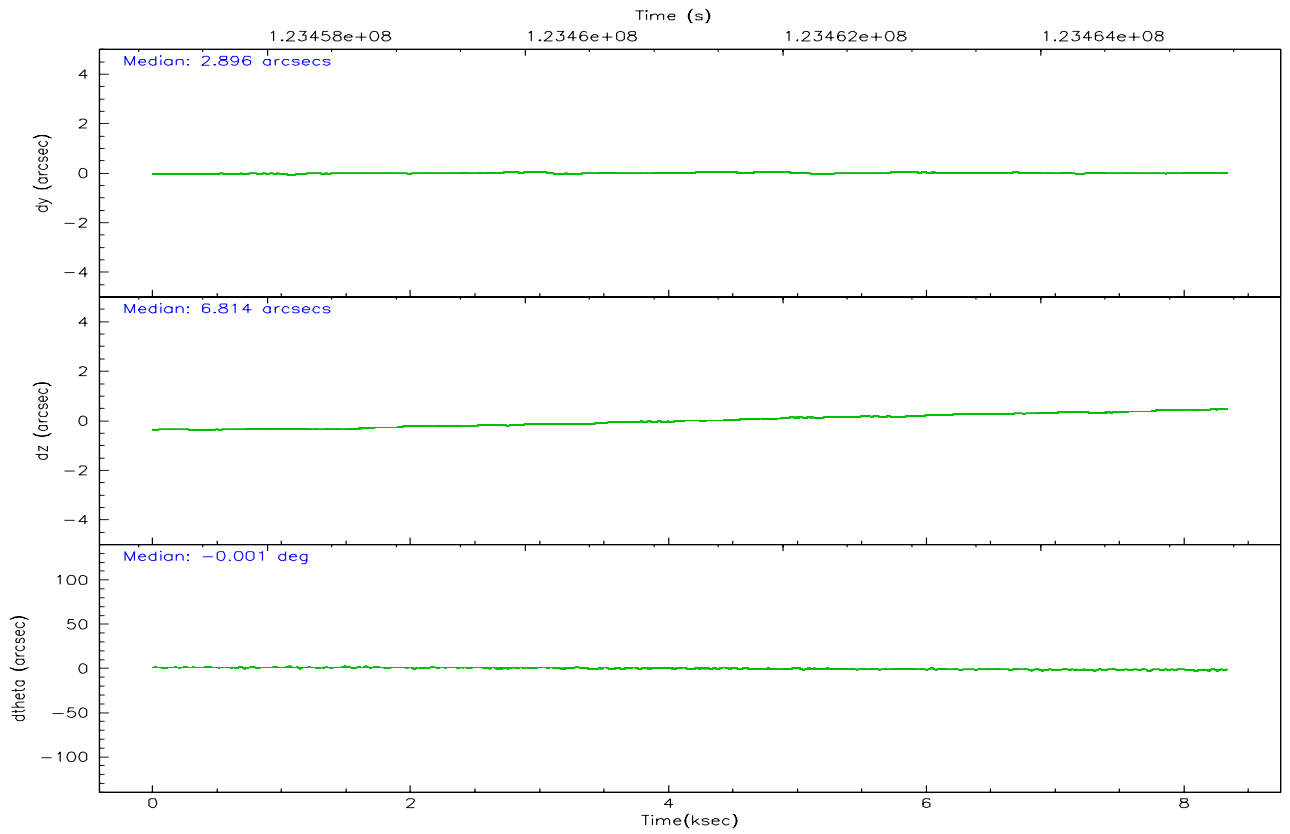
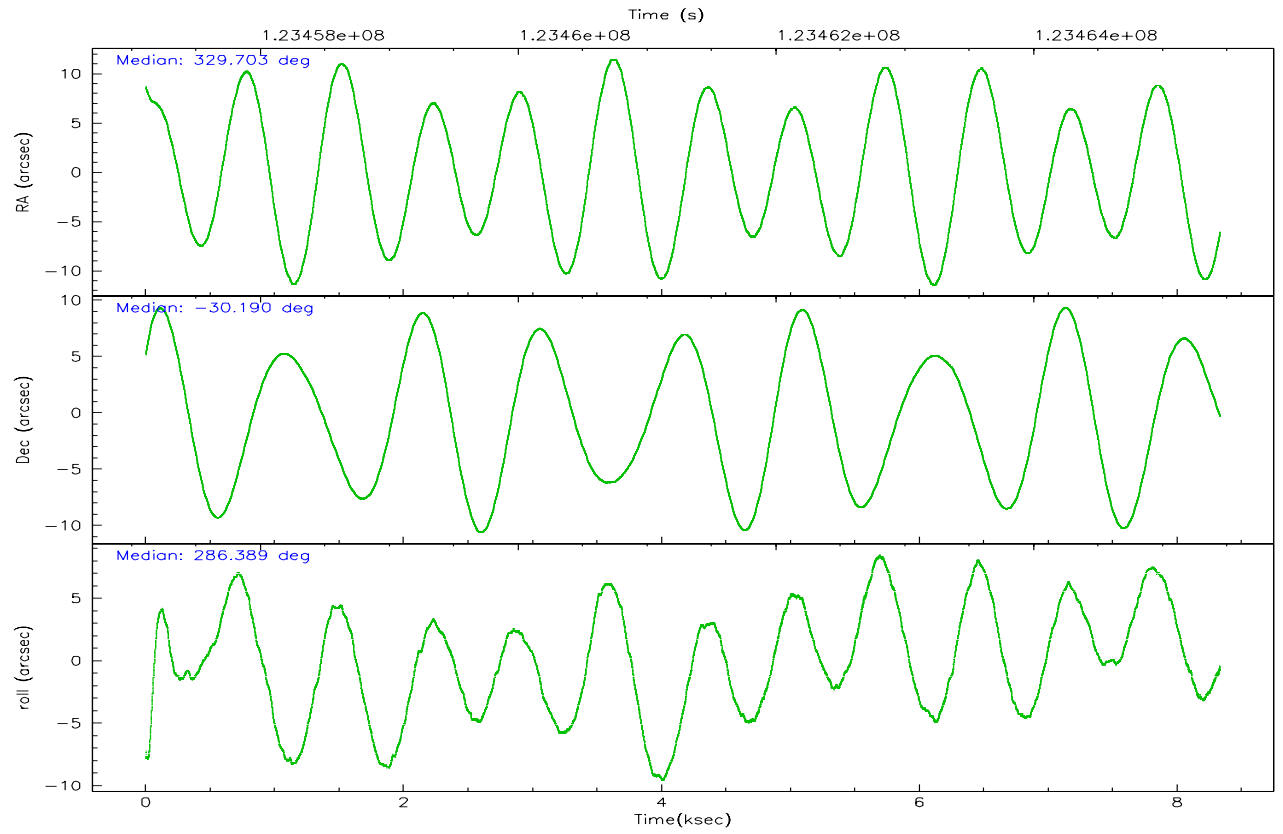
	ccd 0	ccd 1	ccd 2	ccd 3	ccd 6	ccd 7
grade 0 events	2555	2382	32852	20311	2307	2407
	5%	5%	36%	29%	4%	3%
grade 1 events	20	18	775	214	21	50
	0%	0%	0%	0%	0%	0%
grade 2 events	1324	1325	4934	2874	1225	5165
	2%	2%	5%	4%	2%	8%
grade 3 events	575	602	1677	1038	574	2456
	1%	1%	1%	1%	1%	3%
grade 4 events	564	589	1555	1051	585	2376
	1%	1%	1%	1%	1%	3%
grade 5 events	1866	1884	2432	2110	2221	6267
	3%	4%	2%	3%	4%	9%
grade 6 events	1033	1136	2127	1207	1245	14161
	2%	2%	2%	1%	2%	21%
grade 7 events	38871	38982	42956	41100	45277	31586
	83%	83%	48%	58%	84%	48%

2.2 Compared Parameters

Parameter	Planned	Actual	Parameter	Planned	Actual
Instrument	ACIS	ACIS	Obspar format version number	6	6
Detector	ACIS-012367	ACIS-012367	Obspar file type	PREDICTED	ACTUAL
Grating	LETG	LETG	Obspar update status	NONE	UPDATED
Data mode	FAINT	FAINT	Number of optional ACIS chips dropped	0	0
Observation mode	POINTING	POINTING	On-chip summing requested	N	N
Pointing RA	329.679588	329.7025822845162	Subarray requested	NONE	NONE
Pointing Dec	-30.171341	-30.19014852480838	Alternating exposures requested	N	N
Pointing Roll	286.171877	286.3921113171838	Primary exposure time	0.000000	3.2
Window start time	120960064.184000	120960064.184000			
Window stop time	126144064.184000	126144064.184000			
SIM focus pos (mm)	-0.782348	-0.7809083437167272			
SIM defocus (mm)	0	0.001439871863259334			
SIM translation stage pos (mm)	-226.272463	-226.2682626179875			
SIM translation stage offset (mm)	-7.32	-7.32419038494217			
Observation start time	123457448.184000	123456414.35069			
Observation start date	2001-11-29T21:43:04	2001-11-29T21:26:54			
Observation end time	123465448.184000	123465581.95106			
Observation end date	2001-11-29T23:56:24	2001-11-29T23:59:41			
Read mode	TIMED	TIMED			

2.3 Aspect



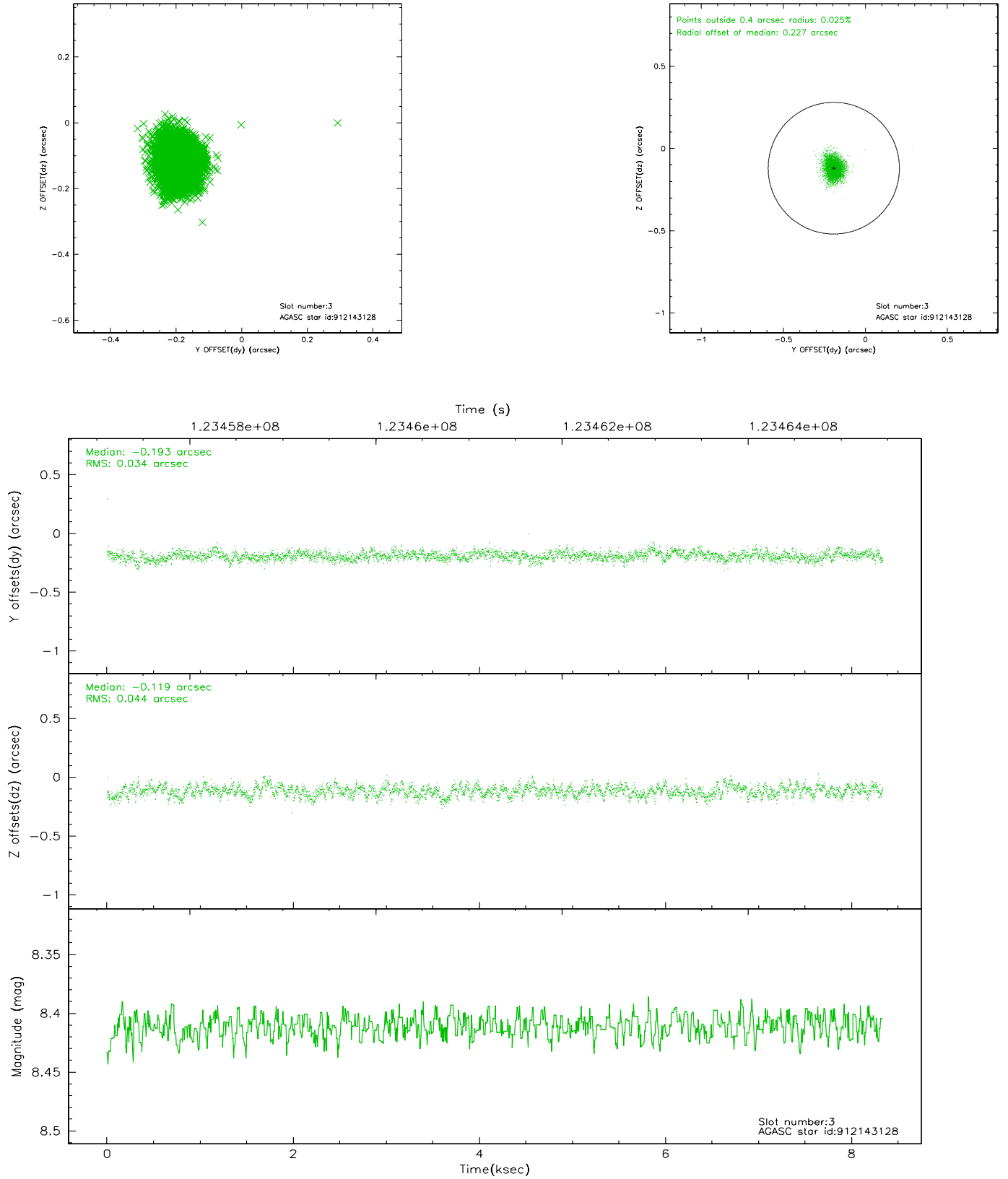


Slot Statistics

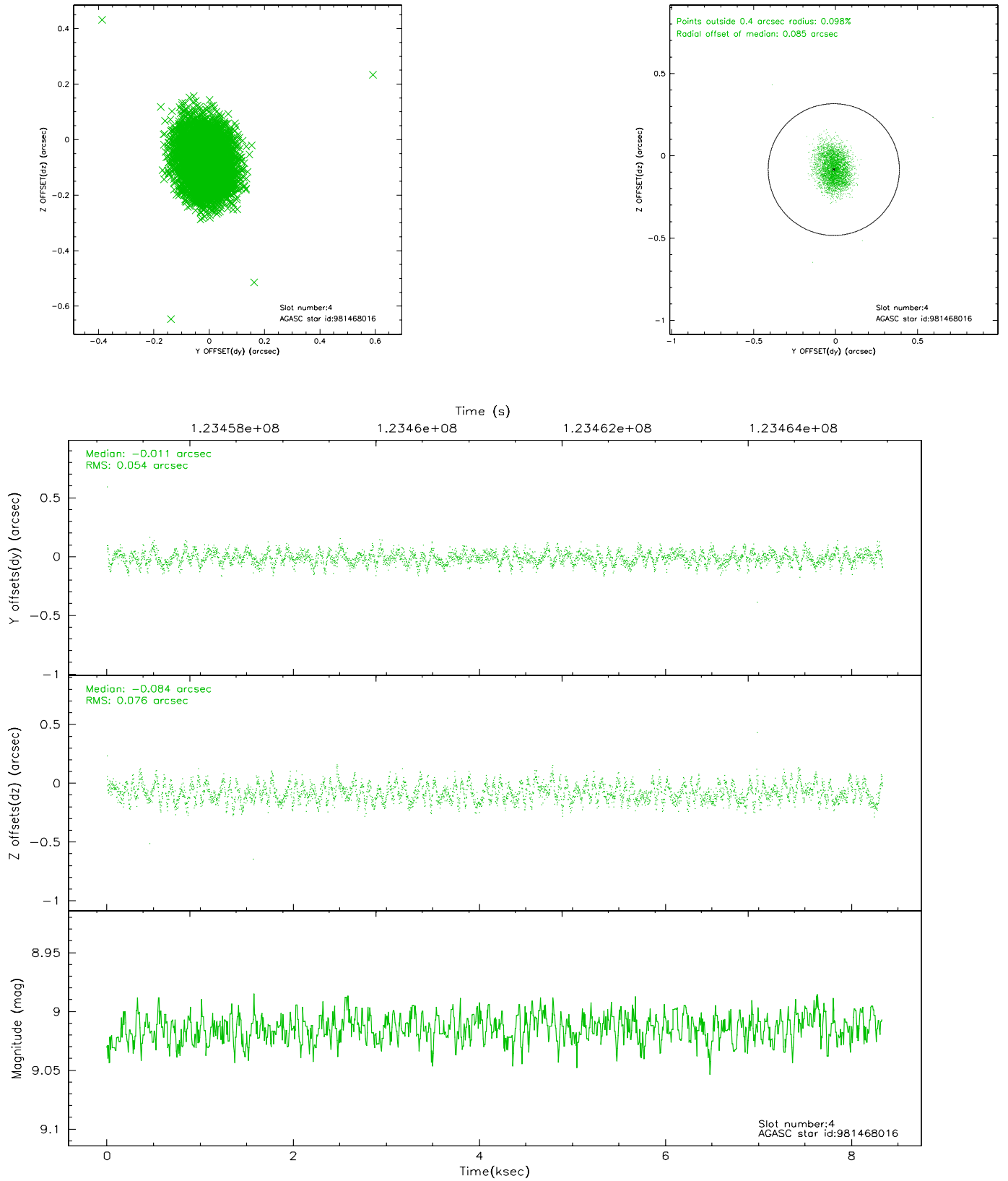
slot	status	id	mag	n_pts	med_dy	med_dz	dr1	dr2	ra	dec	mean_y	mean_z
0	FID	ACIS-I-1	7.23	2033	0.052	0.005	0.016	0.024	0.000000	0.000000	936.80	-980.57
1	FID	ACIS-I-5	7.23	2032	-0.135	0.083	0.011	0.018	0.000000	0.000000	-1811.10	916.62
2	FID	ACIS-I-6	7.26	2032	-0.007	-0.016	0.010	0.016	0.000000	0.000000	401.59	1561.77
3	GUIDE	912143128	8.41	4065	-0.193	-0.119	0.059	0.094	328.924992	-29.706140	-2257.89	-1802.36
4	GUIDE	981468016	9.01	4066	-0.011	-0.084	0.100	0.154	328.842457	-30.034984	-1189.32	-2372.44
5	GUIDE	912275088	9.04	4065	0.023	0.021	0.071	0.119	329.619228	-29.738698	-1548.61	251.77
6	GUIDE	981478152	9.41	4064	0.076	0.118	0.081	0.133	329.415589	-30.057192	-623.07	-675.86
7	GUIDE	981469488	9.59	4054	0.102	0.062	0.107	0.172	329.261199	-30.045155	-797.07	-1126.68

2.4 Star Slots

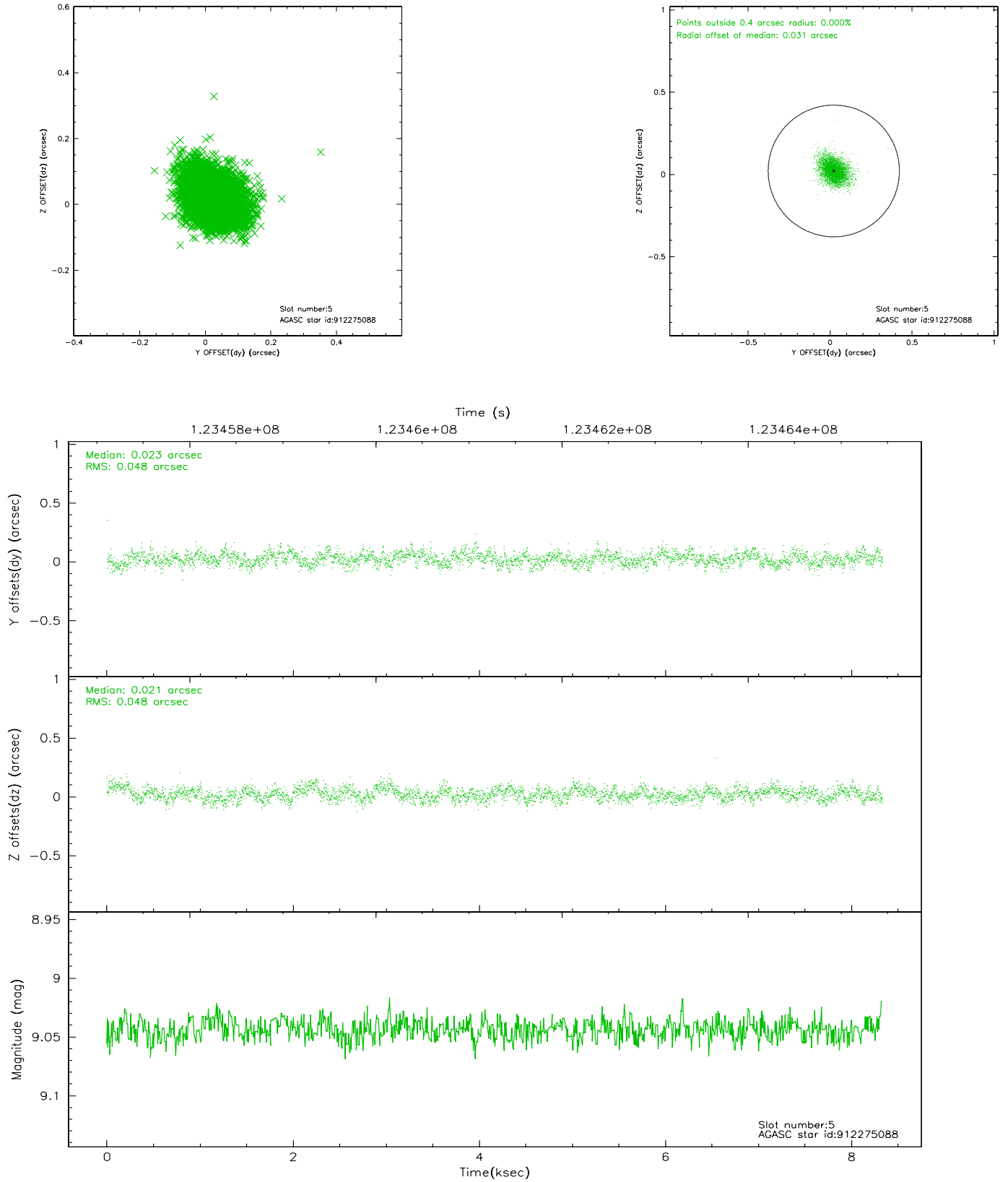
2.4.1 Slot 3



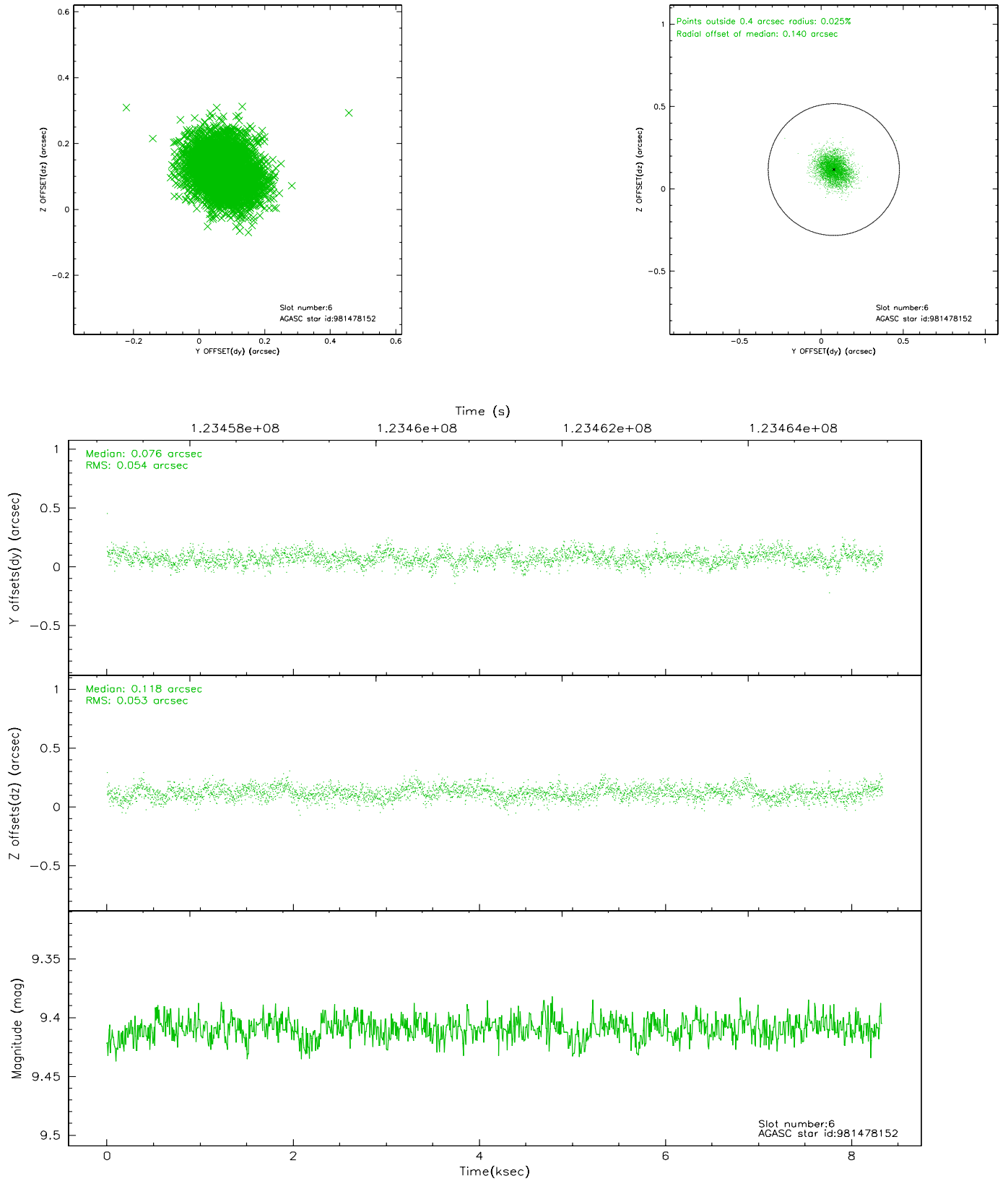
2.4.2 Slot 4



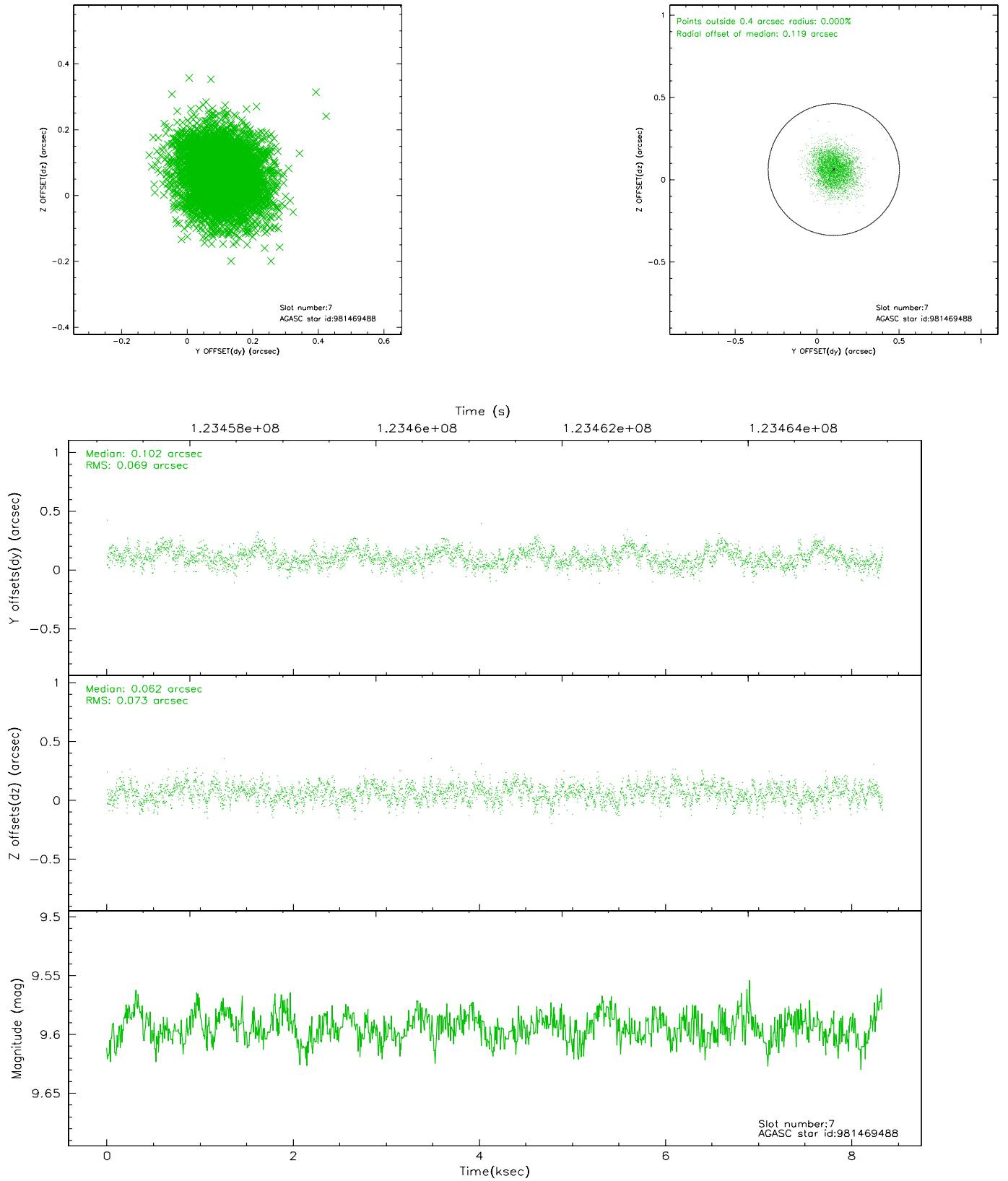
2.4.3 Slot 5



2.4.4 Slot 6

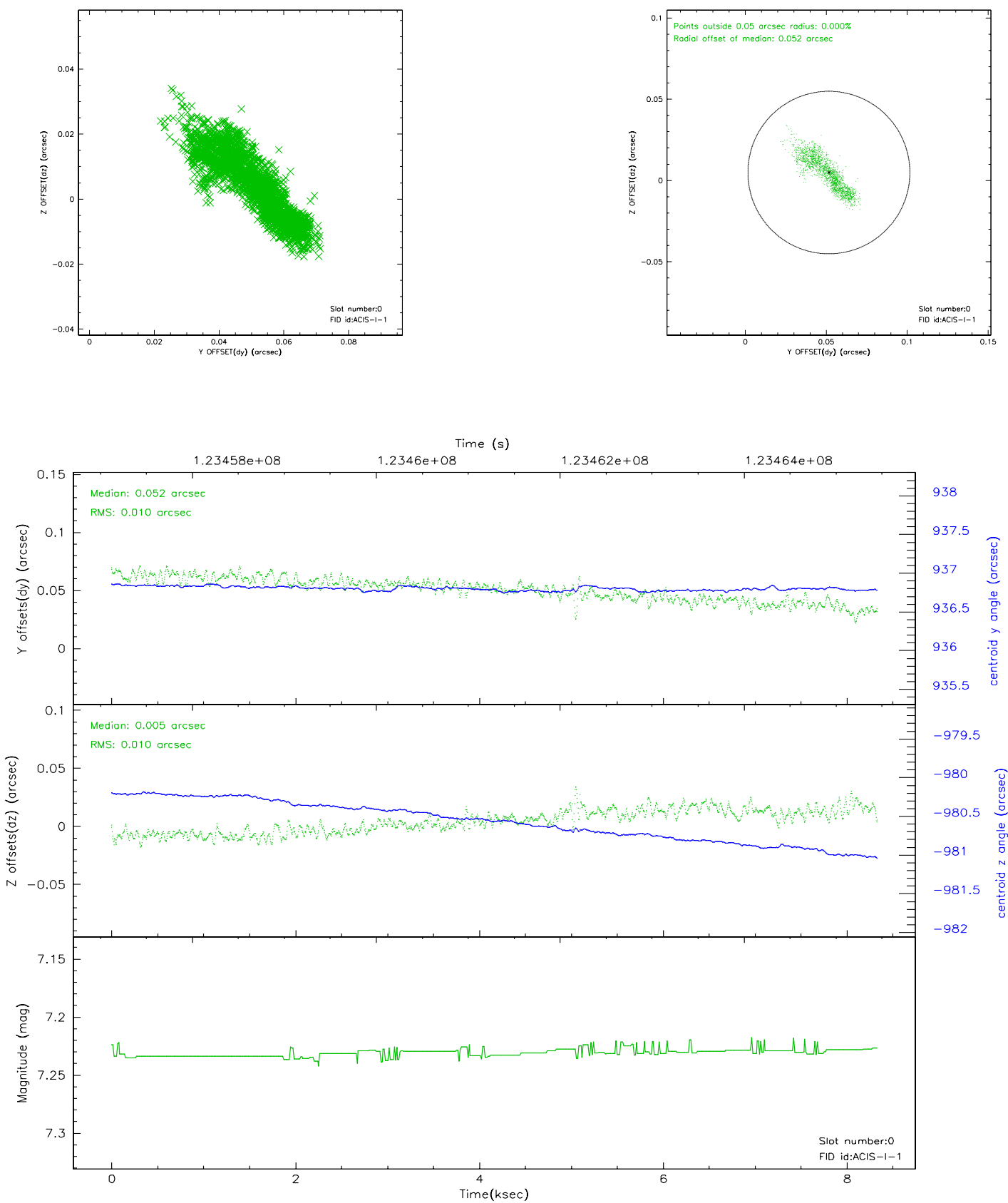


2.4.5 Slot 7

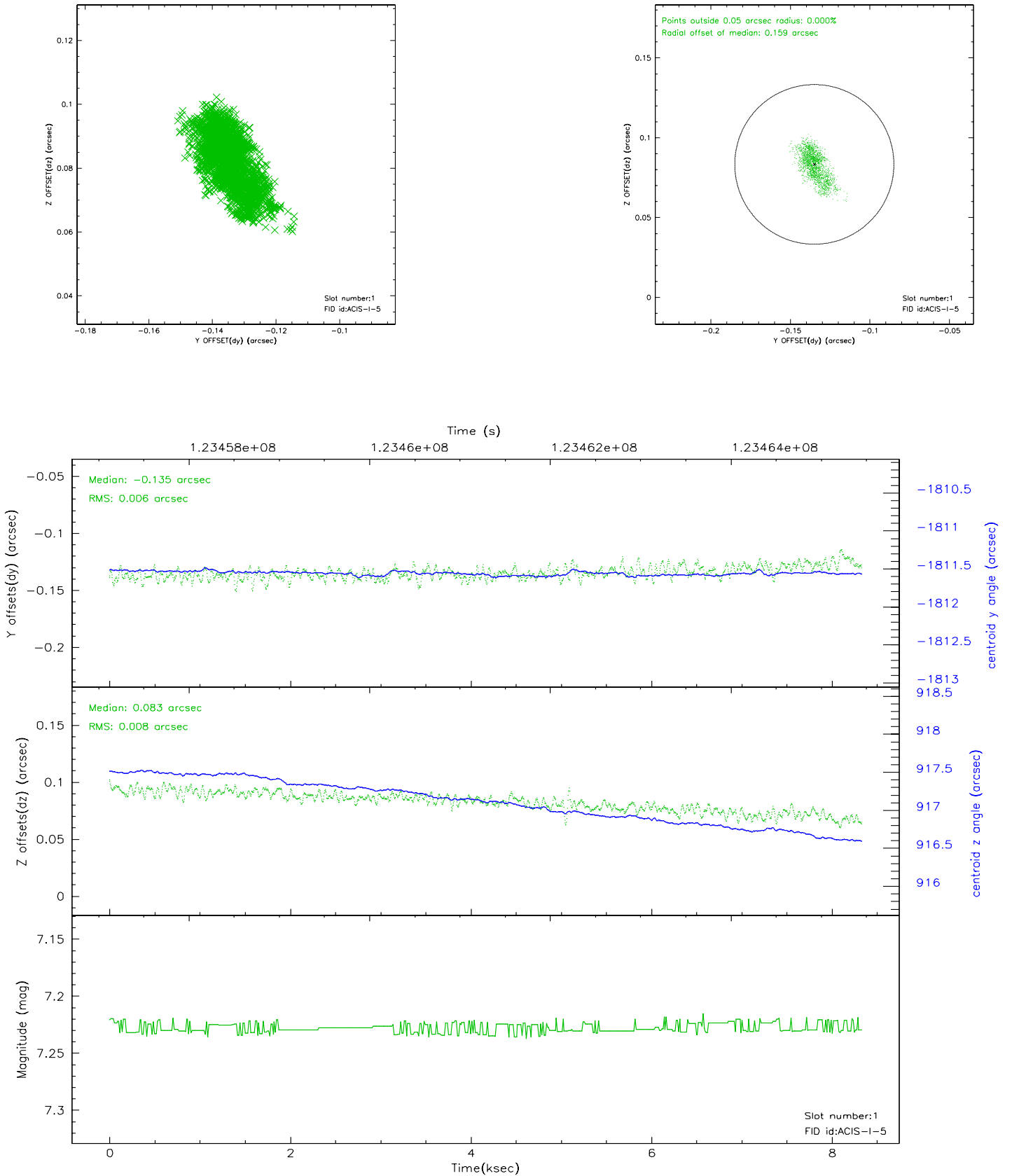


2.5 FID Slots

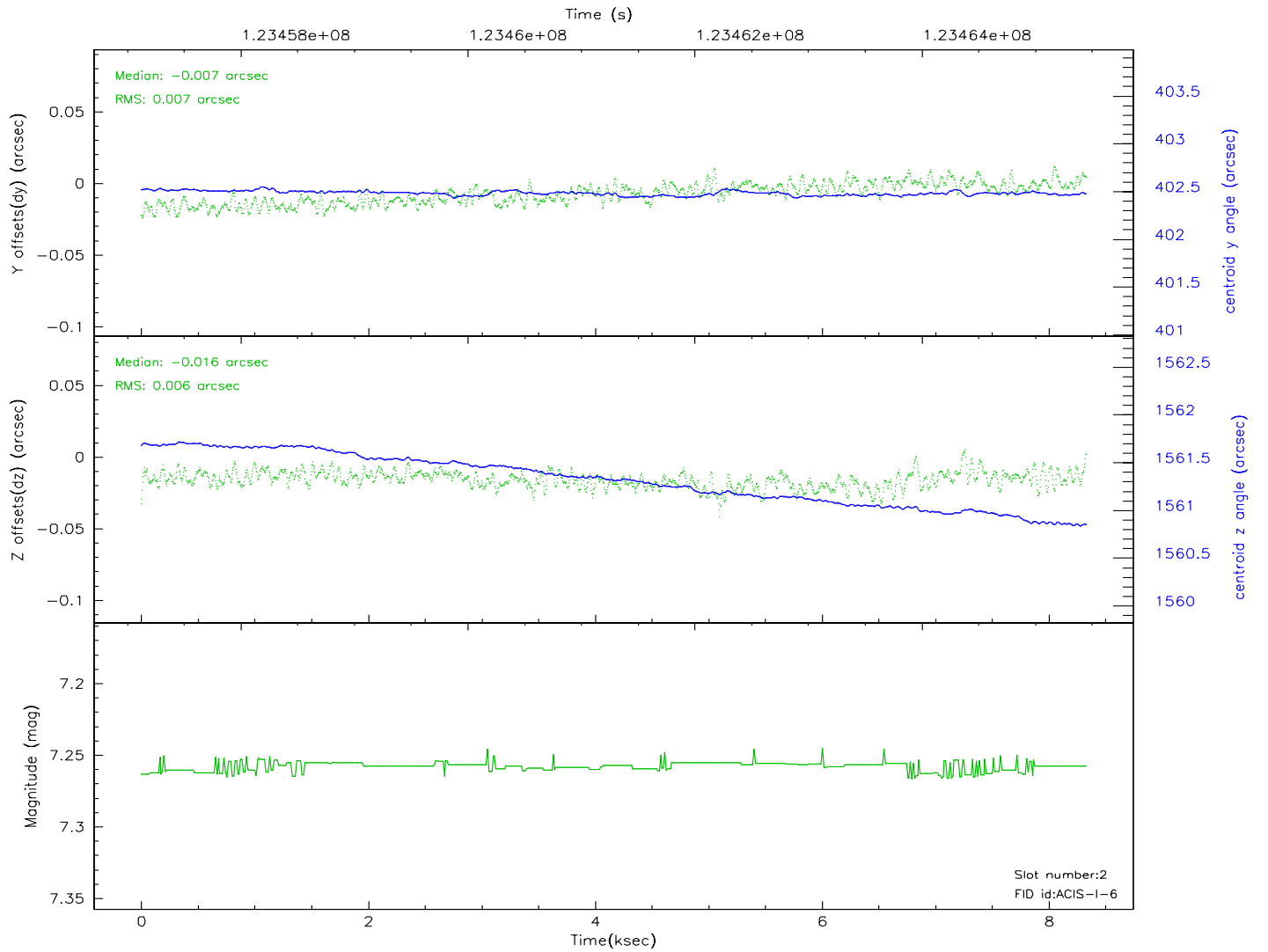
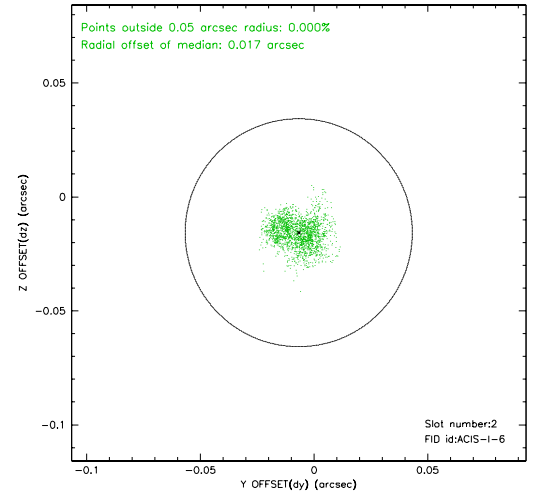
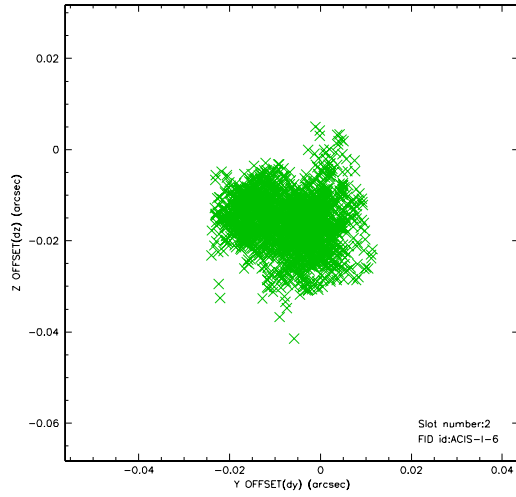
2.5.1 Slot 0



2.5.2 Slot 1

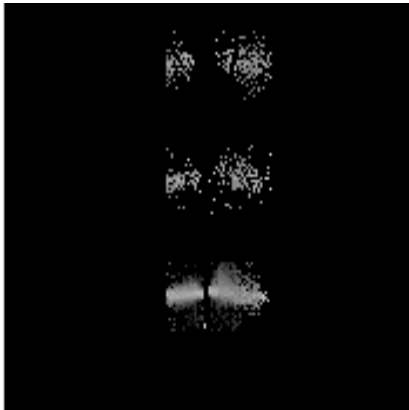


2.5.3 Slot 2

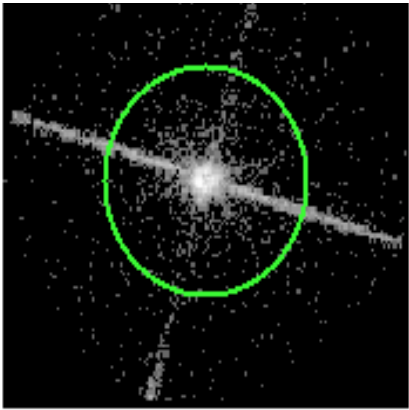


3 Gratings

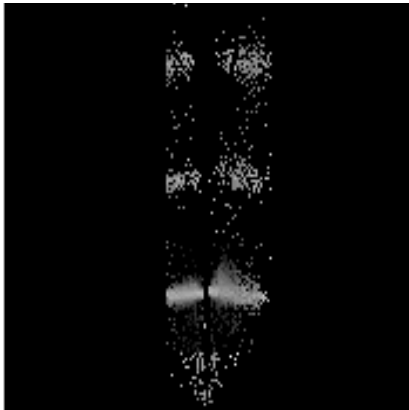
3.1 LETG Arm



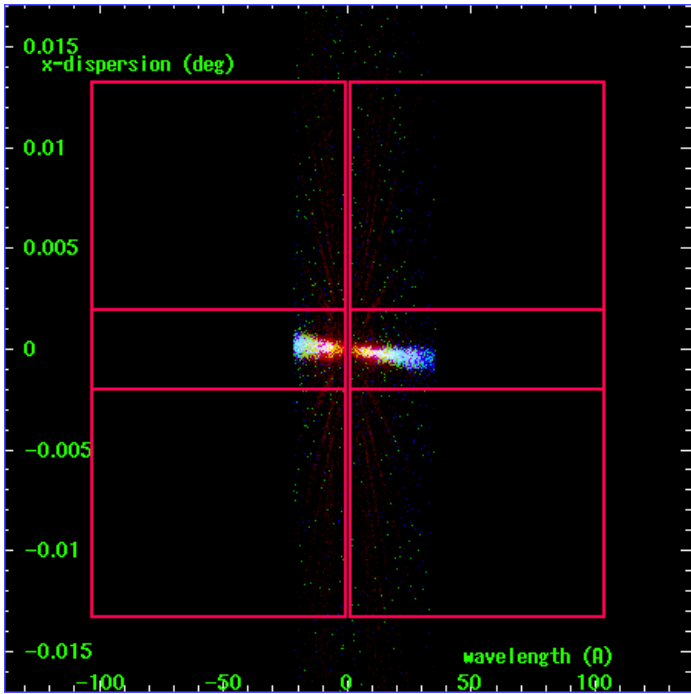
LETG Order Sort 123



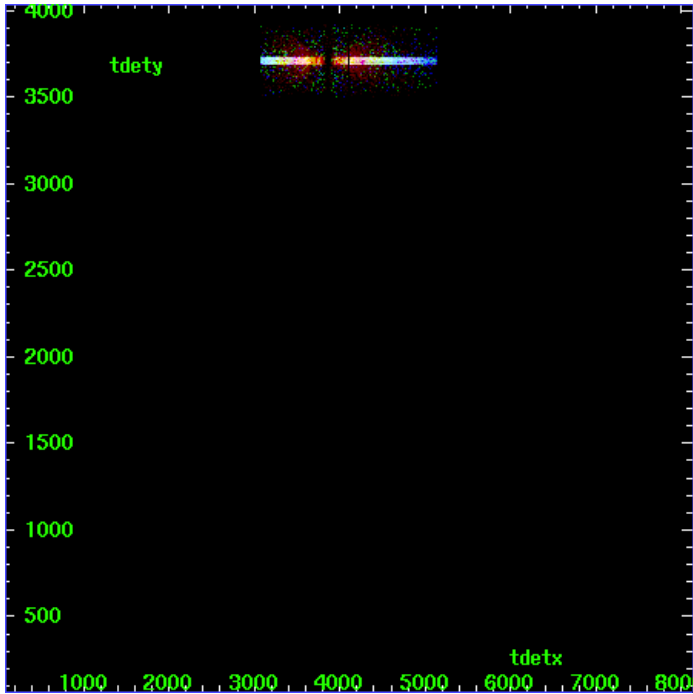
LETG Zero Order



LETG Order Sort ALL

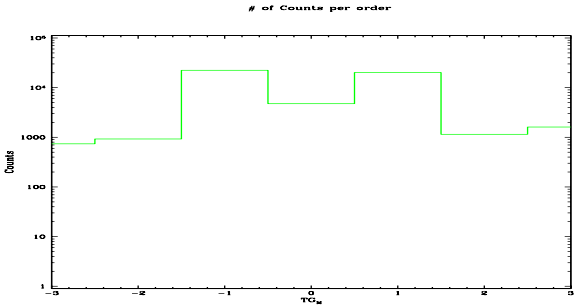


Spot Image LETG

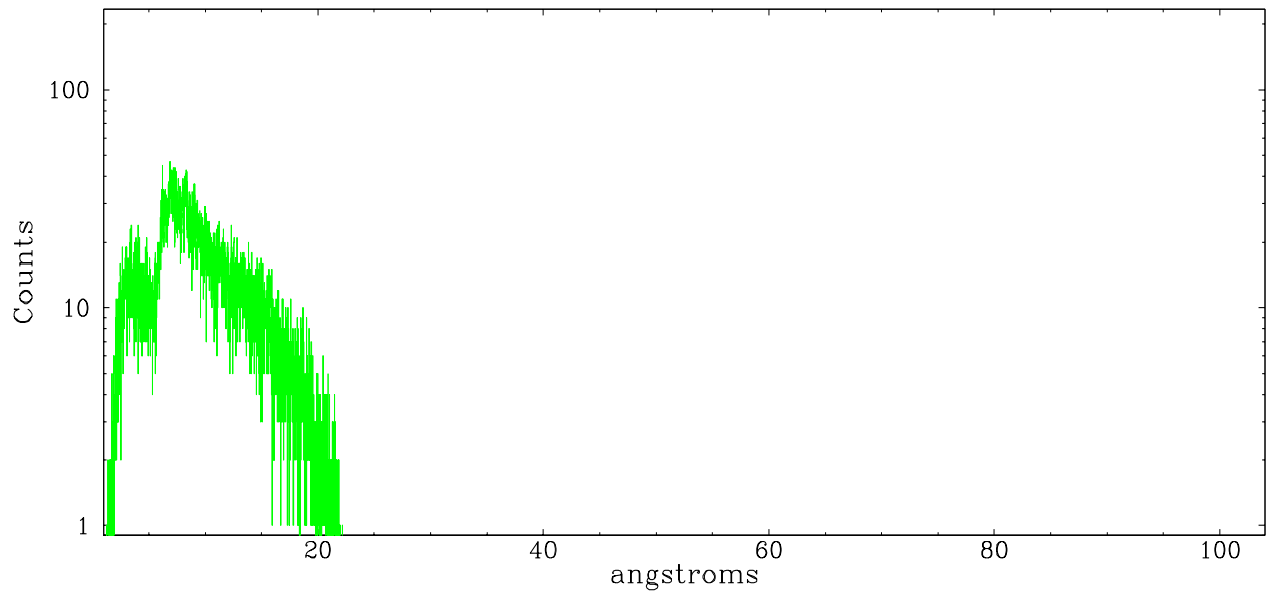


Full Detector LETG

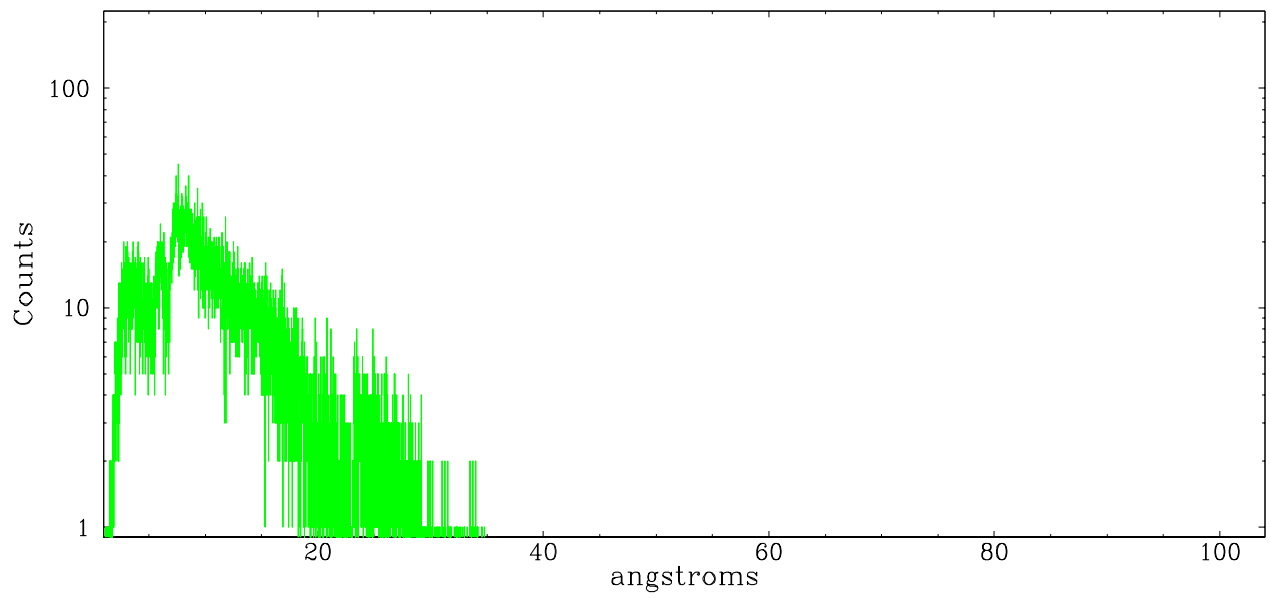
	order -3	order -2	order -1	order 0	order 1	order 2	order 3
Events	739	924	22303	4776	20137	1149	1607



leg order -1



leg order +1



A Summary

A.1 Status

V&V Scientist	David Huenemoerder
V&V Date (YYYY-MM-DD)	2007.03.02
V&V Edition	1
V&V Disposition and Status	OK
V&V Charge Time	7.724

A.2 Comments

Non-standard grating/detector combination; tg_resolve_events run with osip=NONE, since there is no order-sorting table for ACIS-I.