

# V&V Reference Report

## L2 ASCDS Version : 7.6.9

Observation 3113 - L2 Version 001  
Chandra X-Ray Center

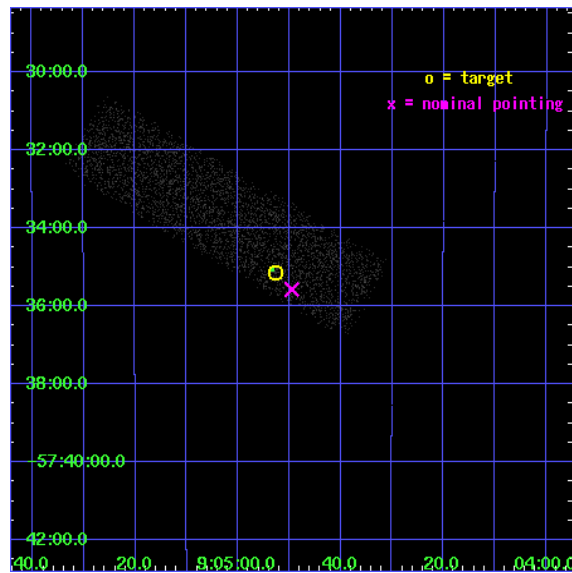
L2 Processing Date : Sep 21 2006

## Contents

<b>1</b>	<b>Front</b>	<b>2</b>
<b>2</b>	<b>OBI</b>	<b>3</b>
2.1	OBI . . . . .	3
2.1.1	Images . . . . .	3
2.1.2	Bias . . . . .	3
2.1.3	Parameters . . . . .	4
2.1.4	Events . . . . .	4
2.2	Compared Parameters . . . . .	5
2.3	Aspect . . . . .	6
2.4	Star Slots . . . . .	9
2.4.1	Slot 3 . . . . .	9
2.4.2	Slot 4 . . . . .	10
2.4.3	Slot 5 . . . . .	11
2.4.4	Slot 6 . . . . .	12
2.4.5	Slot 7 . . . . .	13
2.5	FID Slots . . . . .	14
2.5.1	Slot 0 . . . . .	14
2.5.2	Slot 1 . . . . .	15
2.5.3	Slot 2 . . . . .	16
<b>3</b>	<b>Point Sources</b>	<b>17</b>
<b>A</b>	<b>Summary</b>	<b>18</b>
A.1	Status . . . . .	18
A.2	Comments . . . . .	18

# 1 Front

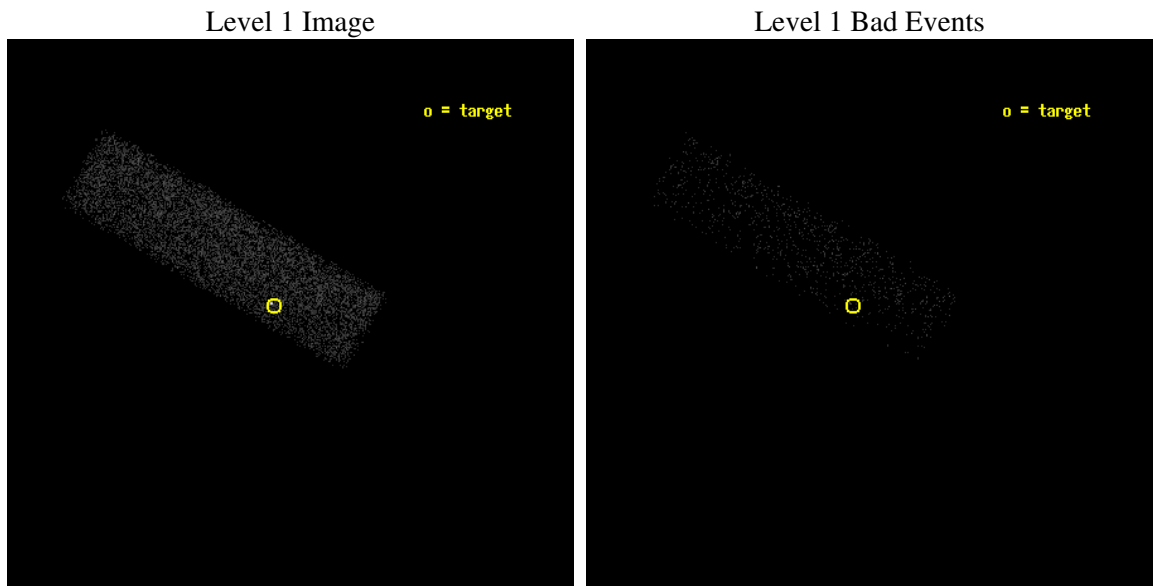
seq_num	700552
obs_id	3113
title	A COMPLETE SURVEY FOR X-RAY EMISSION FROM RADIO JETS
observer	Dr. Herman Marshall
object	0903-573
dtcycle	0
cycle	P
ra_targ	136.219167
dec_targ	-57.585833
ra_nom	136.20634765975
dec_nom	-57.593120291309
roll_nom	210.25463164262
revision	2
ontime	5187.1590672731
livetime	4934.042677897
ontime7	5187.1590672731
l2events	5269



## 2 OBI

### 2.1 OBI

#### 2.1.1 Images



#### 2.1.2 Bias

Chip 7



### 2.1.3 Parameters

obi_num	1
ascdsver	7.6.9
caldbver	3.2.3
date	2006-09-21T09:08:11
revision	2

sched_exp_time	4850.000000
ontime	5679.4738731086
ontime7	5679.4738731086
l1events	12951

### 2.1.4 Events

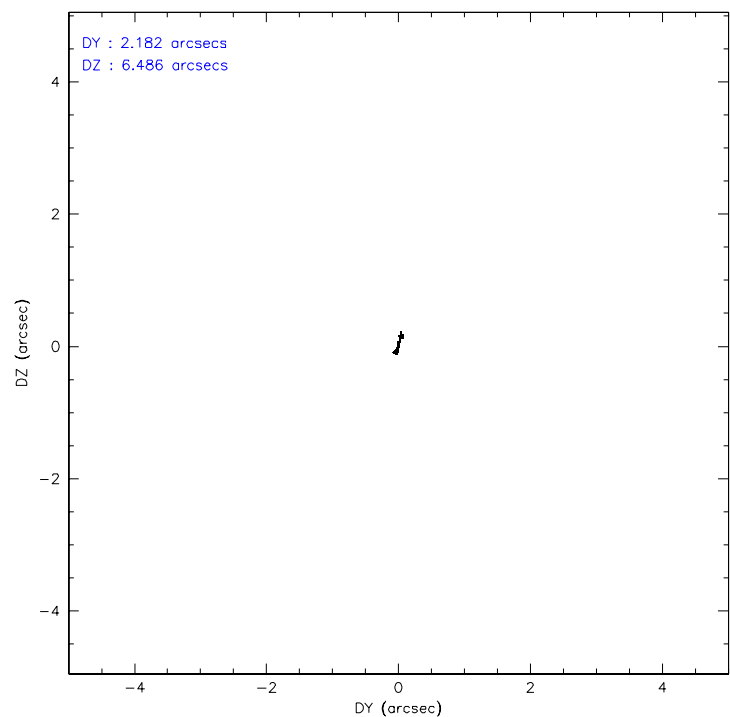
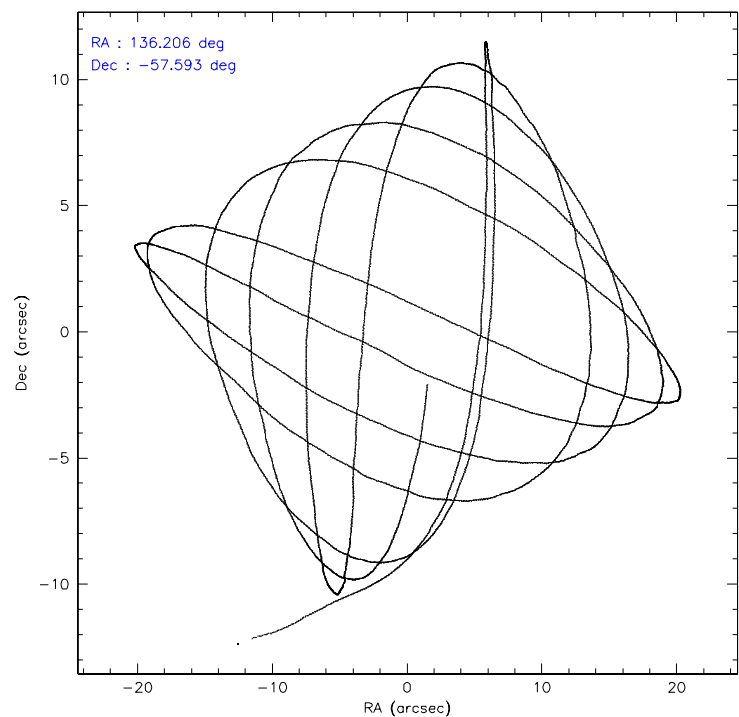
	<b>ccd 7</b>
level 1 events	12951
rejected events	7552
rejected %	58%

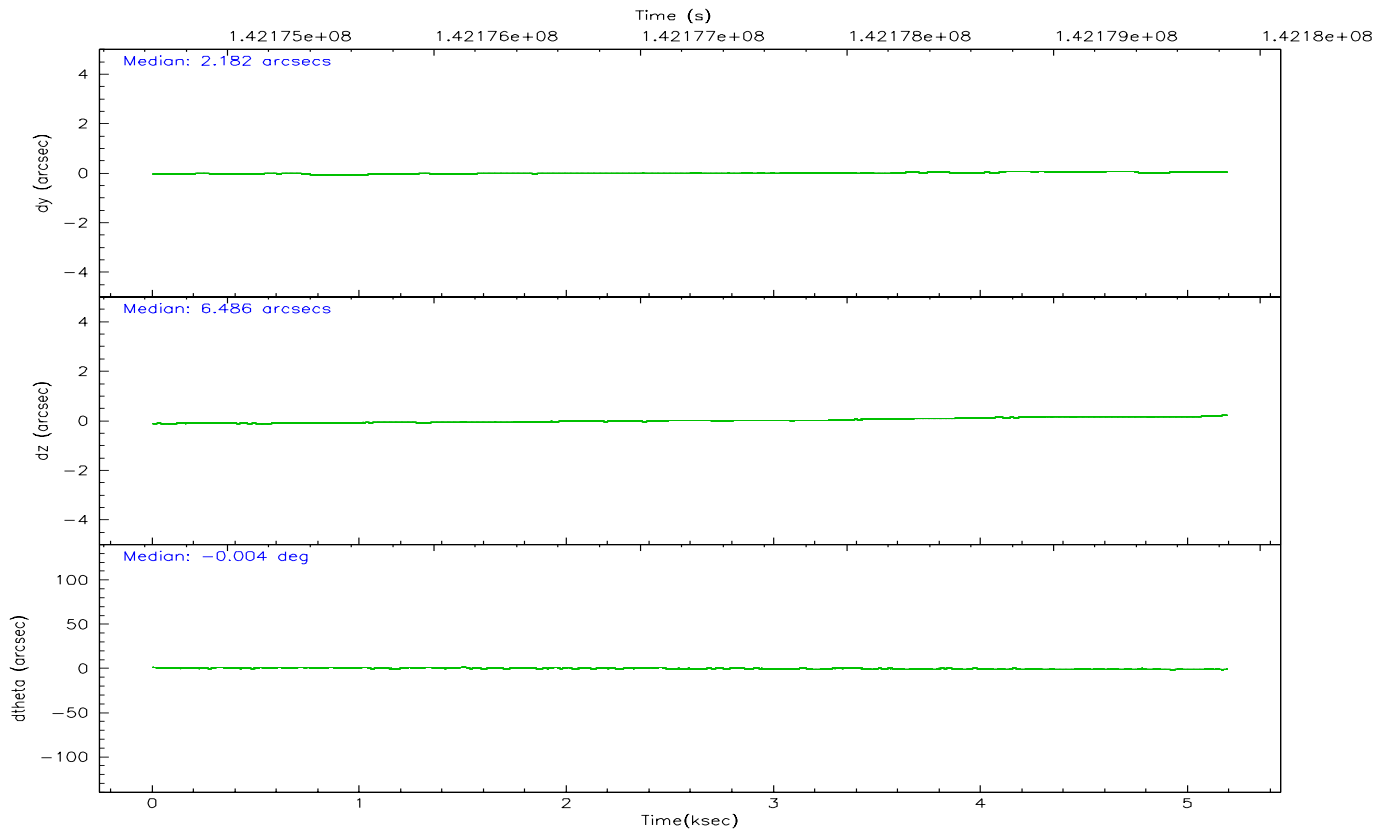
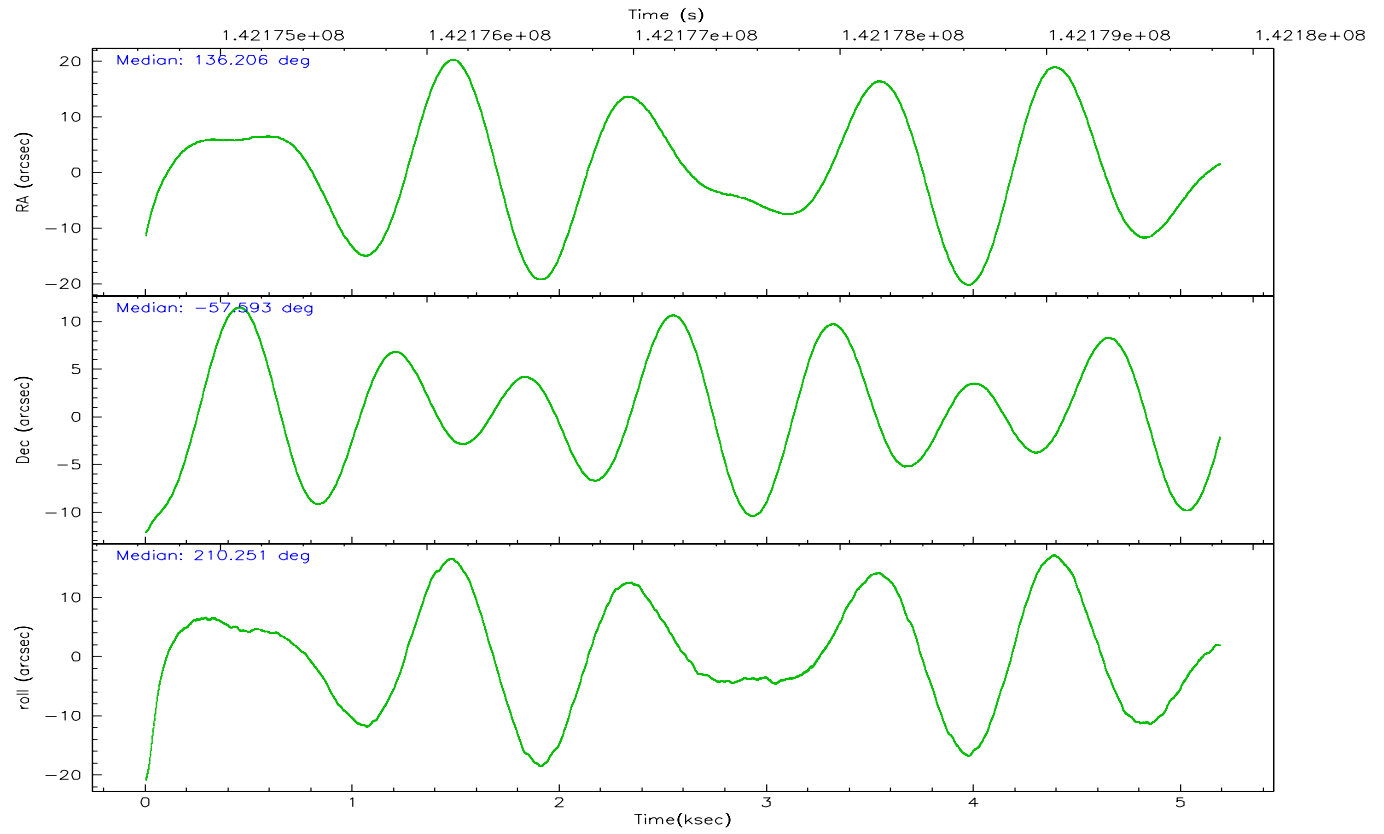
	<b>ccd 7</b>
grade 0 events	541
	4%
grade 1 events	12
	0%
grade 2 events	1293
	9%
grade 3 events	547
	4%
grade 4 events	527
	4%
grade 5 events	929
	7%
grade 6 events	2966
	22%
grade 7 events	6136
	47%

## 2.2 Compared Parameters

Parameter	Planned	Actual	Parameter	Planned	Actual
Instrument	ACIS	ACIS	Obspar format version number	6	6
Detector	ACIS-7	ACIS-7	Obspar file type	PREDICTED	ACTUAL
Grating	NONE	NONE	Obspar update status	NONE	UPDATED
Data mode	FAINT	FAINT	Number of optional ACIS chips dropped	0	0
Observation mode	POINTING	POINTING	On-chip summing requested	N	N
Pointing RA	136.230987	136.206347659753	Subarray requested	CUSTOM	1/4
Pointing Dec	-57.569187	-57.59312029130945	Subarray start row	1	1
Pointing Roll	210.118831	210.2546316426186	Subarray row count	256	256
SIM focus pos (mm)	-0.684267	-0.6828225247311905	Alternating exposures requested	N	N
SIM defocus (mm)	0	0.001444936568705701	Primary exposure time	0.000000	0.8
SIM translation stage pos (mm)	-178.632523	-178.6395878605364			
SIM translation stage offset (mm)	-11.5	-11.49293472247138			
Observation start time	142174983.184000	142173944.20898			
Observation start date	2002-07-04T13:01:59	2002-07-04T12:45:44			
Observation end time	142179833.184000	142180259.74674			
Observation end date	2002-07-04T14:22:49	2002-07-04T14:30:59			
Read mode	TIMED	TIMED			

## 2.3 Aspect





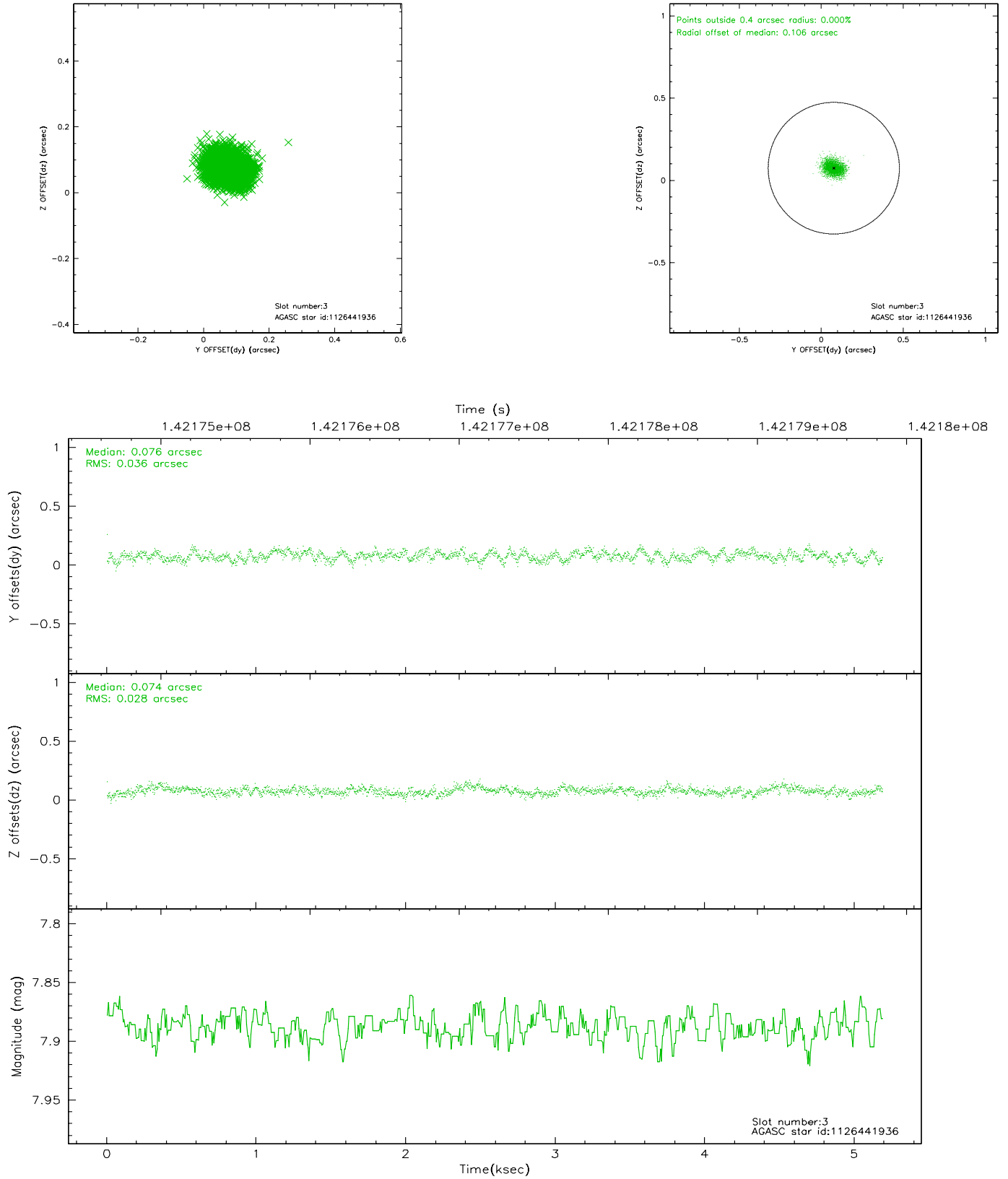
### Slot Statistics

slot	status	id	mag	n_pts	med_dy	med_dz	dr1	dr2	ra	dec	mean_y	mean_z
0	FID	ACIS-S-2	7.08	1266	-0.066	-0.311	0.008	0.013	0.000000	0.000000	-754.01	-1964.55
1	FID	ACIS-S-4	7.17	1264	0.006	0.114	0.004	0.008	0.000000	0.000000	2158.81	-57.06
2	FID	ACIS-S-5	7.22	1264	0.029	0.203	0.008	0.013	0.000000	0.000000	-1805.26	-61.97
3	GUIDE	1126441936	7.89	2527	0.076	0.074	0.049	0.077	135.744289	-58.394420	2286.23	2112.78
4	GUIDE	1125911800	8.37	2529	0.051	0.009	0.063	0.101	135.439863	-57.681289	1524.53	-405.76
5	GUIDE	1125914208	8.73	2526	-0.060	-0.047	0.071	0.110	135.425377	-57.057219	444.28	-2377.19
6	GUIDE	1126048096	8.62	2526	-0.061	0.059	0.080	0.129	137.734232	-57.665503	-2313.92	1779.57
7	GUIDE	1126046984	8.92	2528	-0.006	-0.100	0.070	0.116	136.983032	-57.461036	-1452.30	401.96

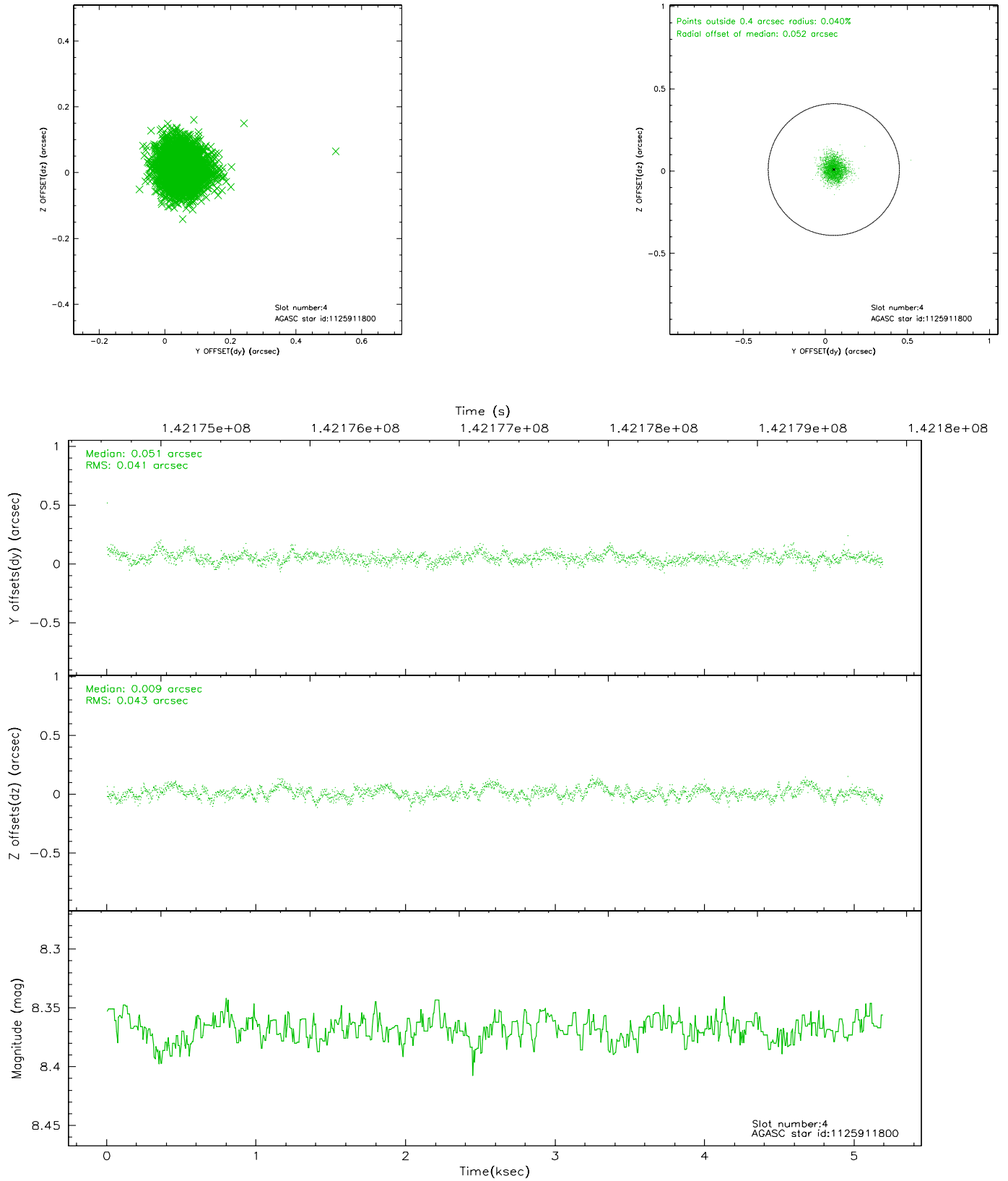


## 2.4 Star Slots

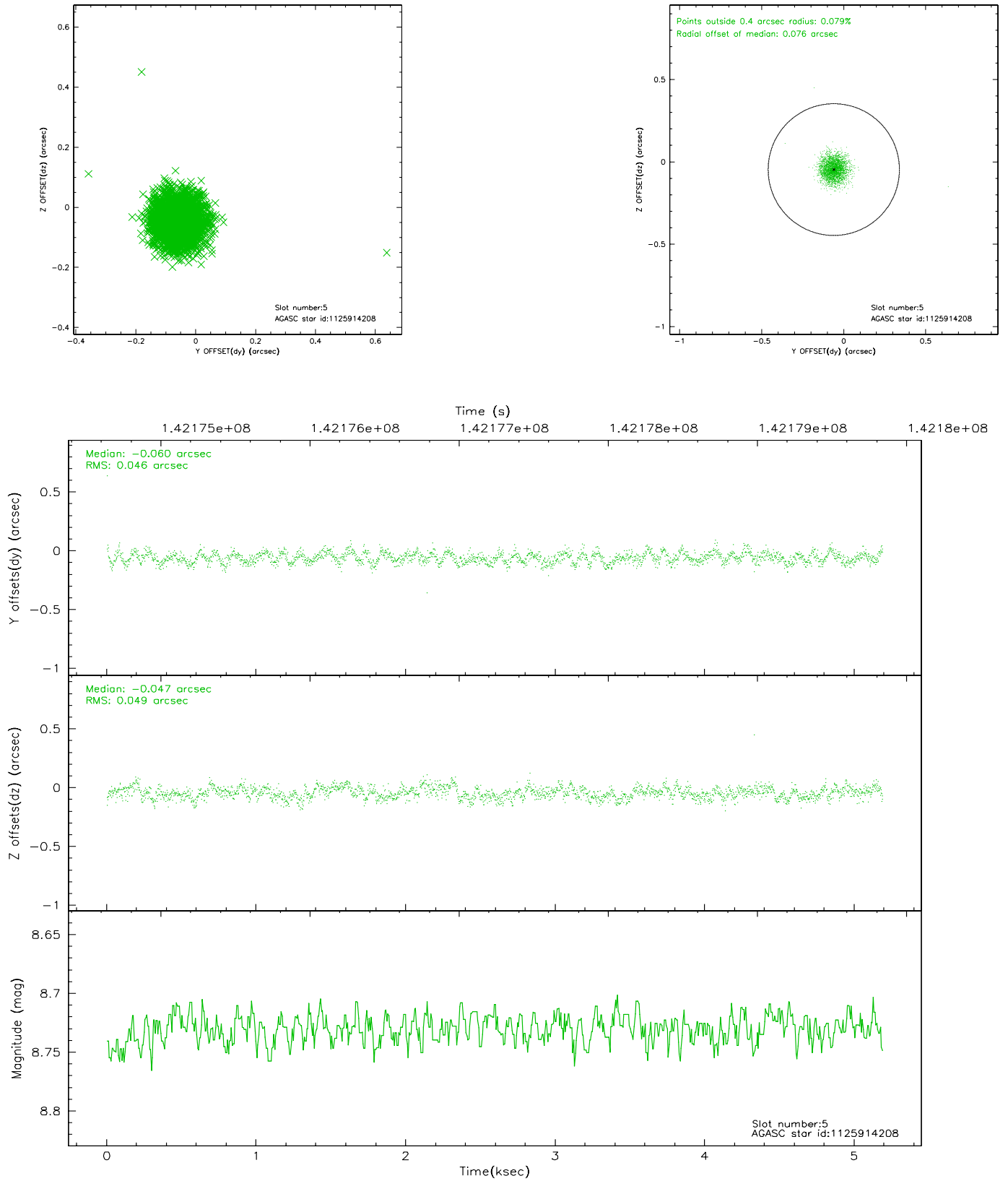
### 2.4.1 Slot 3



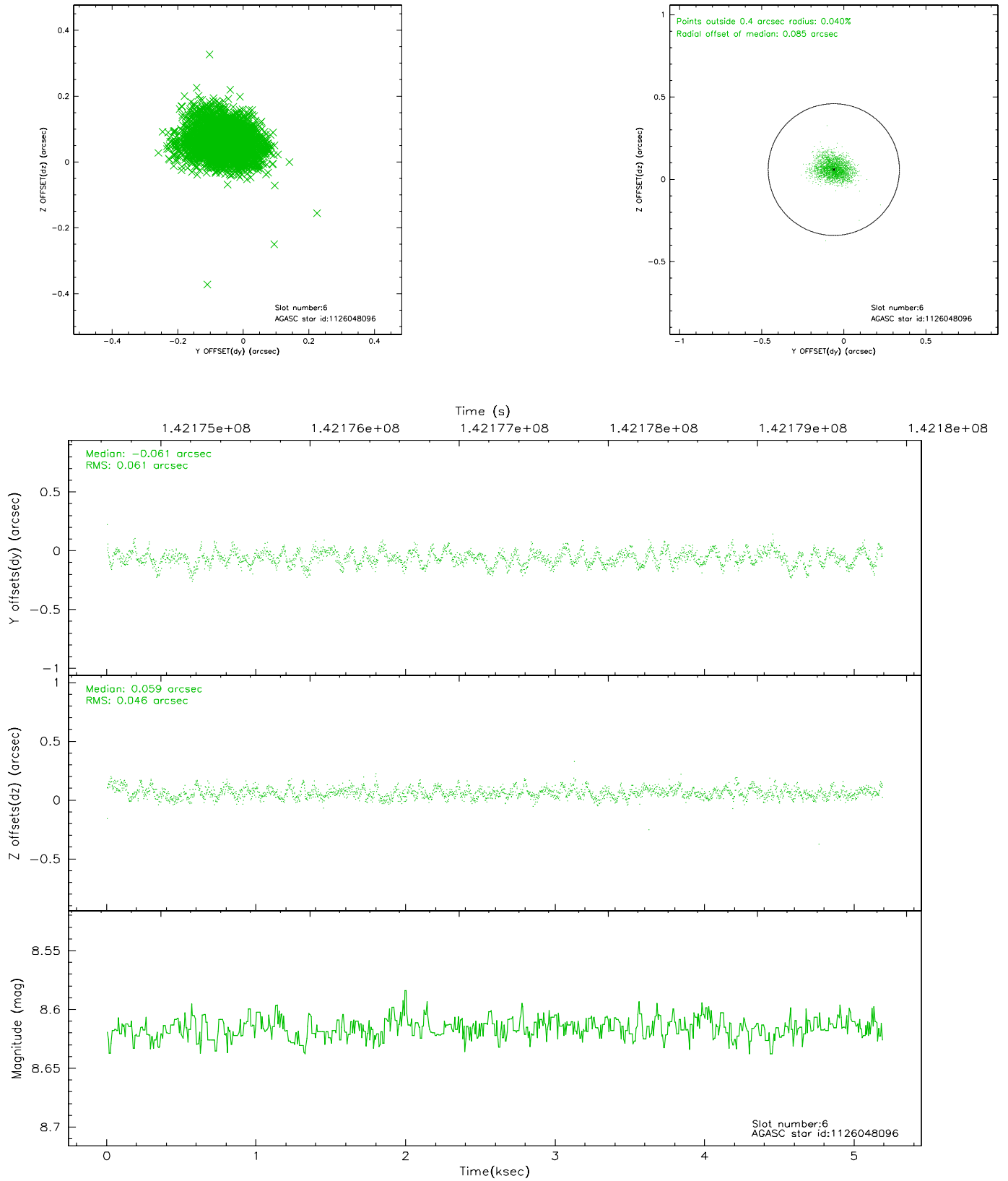
## 2.4.2 Slot 4



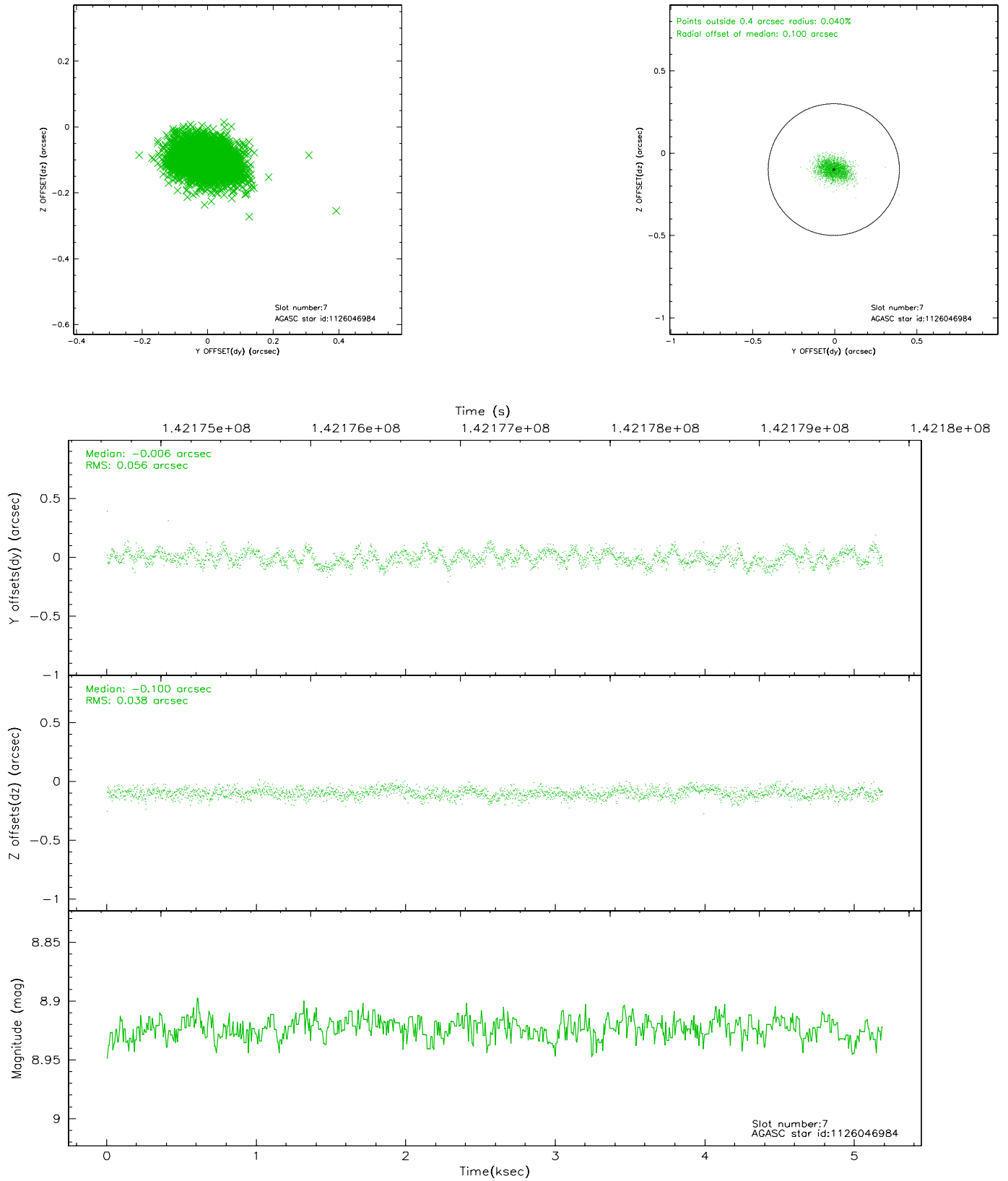
### 2.4.3 Slot 5



## 2.4.4 Slot 6

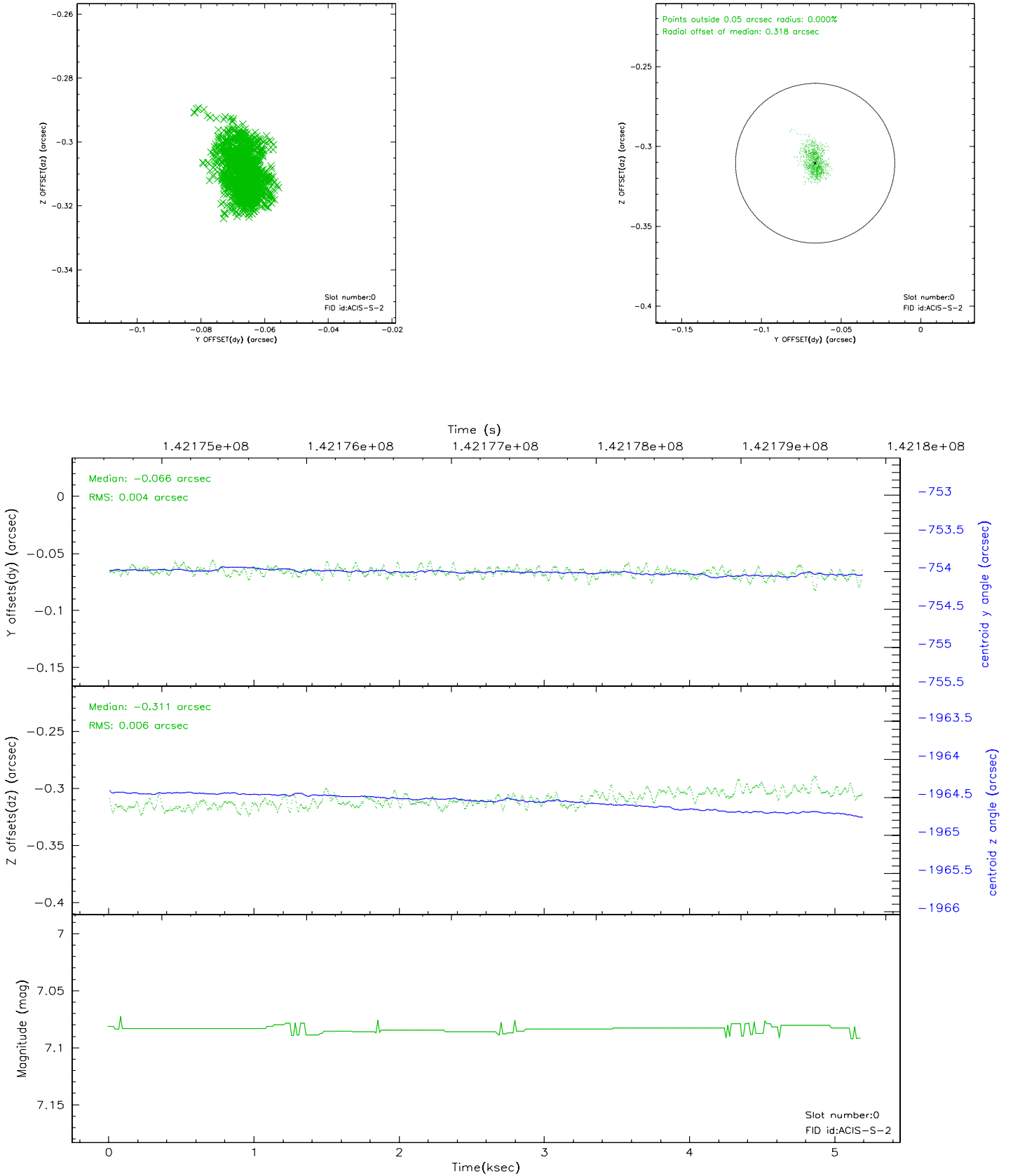


## 2.4.5 Slot 7

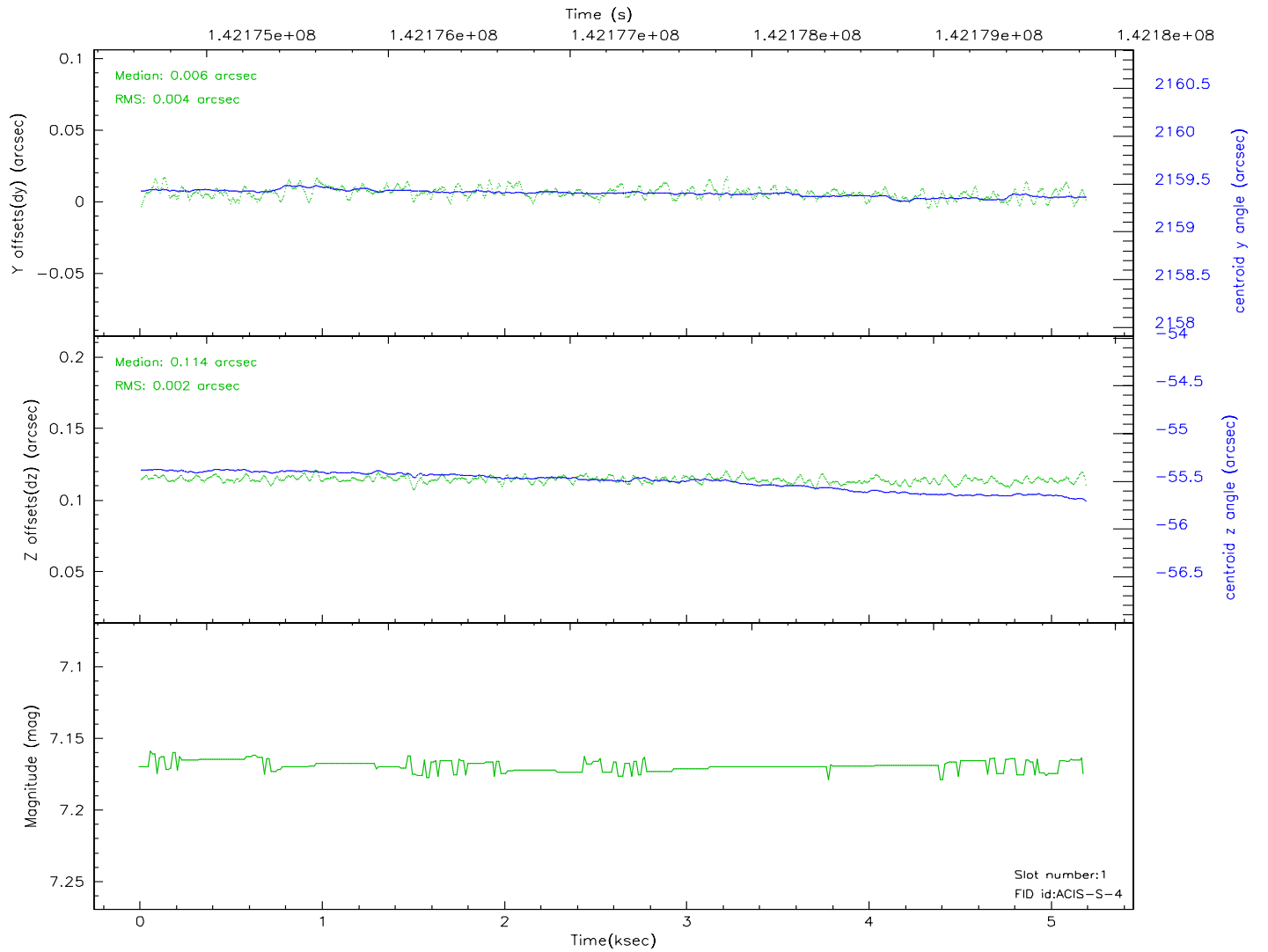
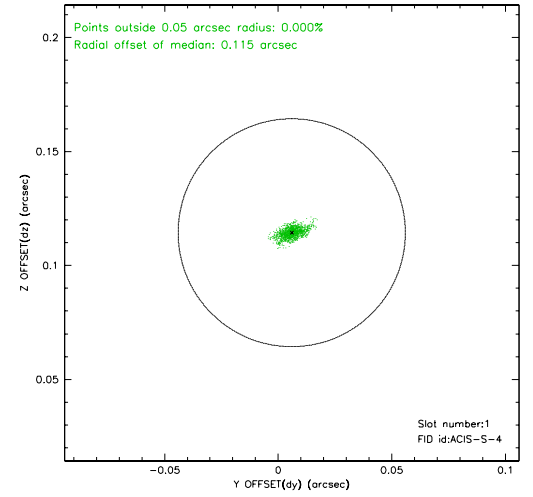
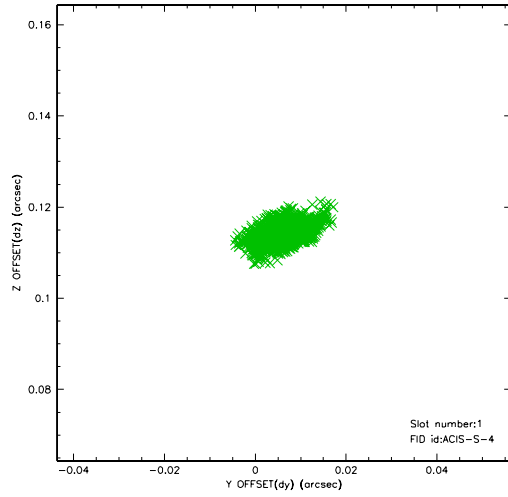


## 2.5 FID Slots

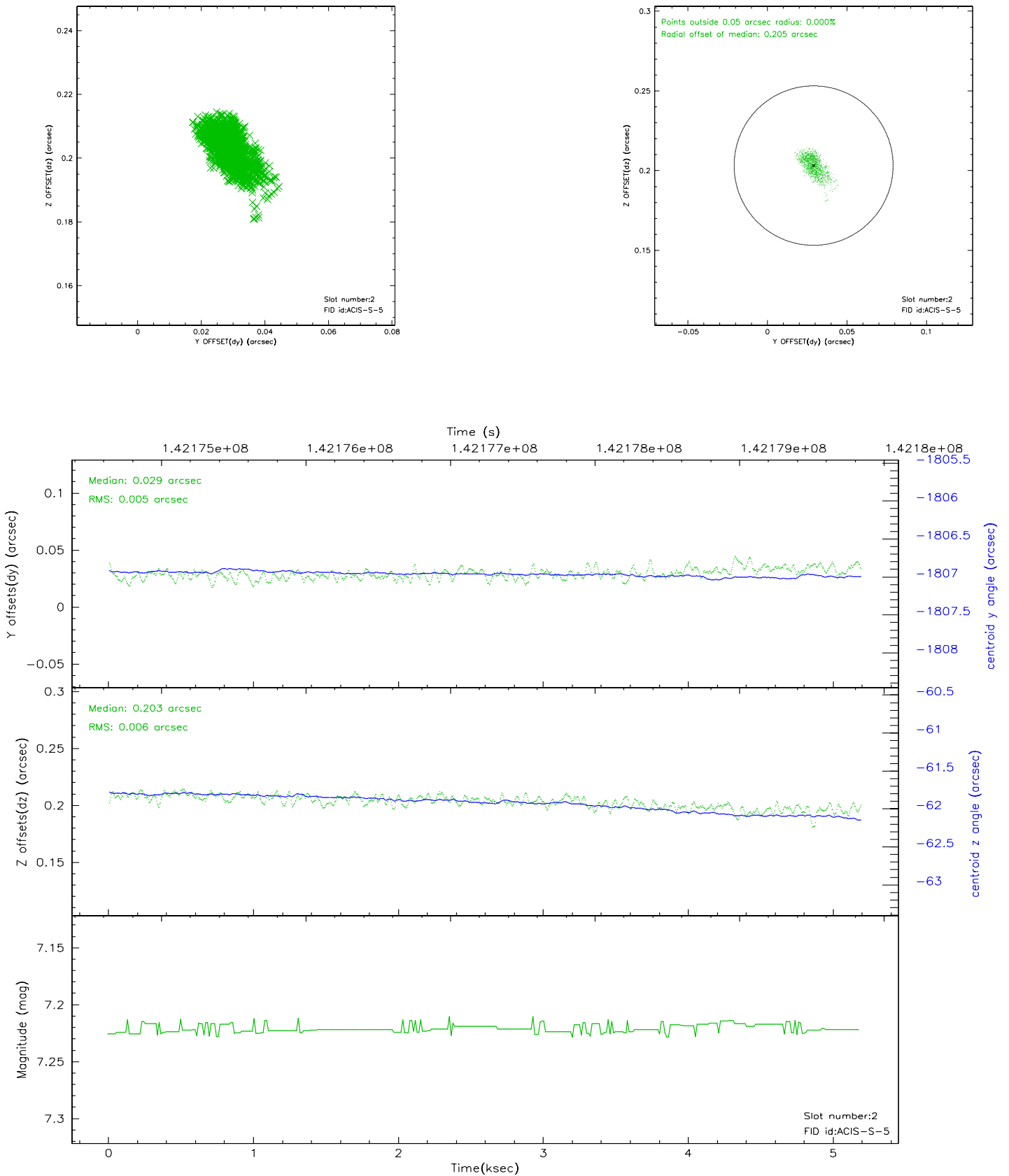
### 2.5.1 Slot 0



## 2.5.2 Slot 1



### 2.5.3 Slot 2





### 3 Point Sources

## A Summary

### A.1 Status

V&V Scientist	Beth Sundheim
V&V Date (YYYY-MM-DD)	2006.09.21
V&V Edition	1
V&V Disposition and Status	OK
V&V Charge Time	5.187

### A.2 Comments