

# V&V Reference Report

## L2 ASCDS Version : 7.6.9

Observation 3073 - L2 Version 001  
Chandra X-Ray Center

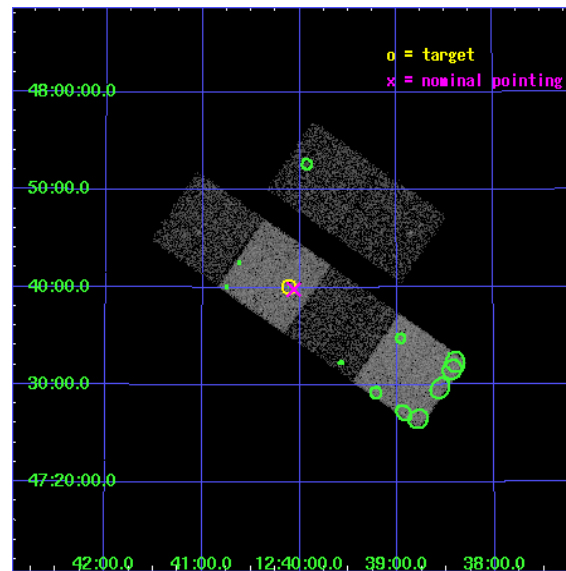
L2 Processing Date : Sep 14 2006

## Contents

<b>1</b>	<b>Front</b>	<b>2</b>
<b>2</b>	<b>OBI</b>	<b>3</b>
2.1	OBI . . . . .	3
2.1.1	Images . . . . .	3
2.1.2	Bias . . . . .	3
2.1.3	Parameters . . . . .	4
2.1.4	Events . . . . .	4
2.2	Compared Parameters . . . . .	5
2.3	Aspect . . . . .	6
2.4	Star Slots . . . . .	9
2.4.1	Slot 3 . . . . .	9
2.4.2	Slot 4 . . . . .	10
2.4.3	Slot 5 . . . . .	11
2.4.4	Slot 6 . . . . .	12
2.4.5	Slot 7 . . . . .	13
2.5	FID Slots . . . . .	14
2.5.1	Slot 0 . . . . .	14
2.5.2	Slot 1 . . . . .	15
2.5.3	Slot 2 . . . . .	16
<b>3</b>	<b>Point Sources</b>	<b>17</b>
<b>A</b>	<b>Summary</b>	<b>18</b>
A.1	Status . . . . .	18
A.2	Comments . . . . .	18

# 1 Front

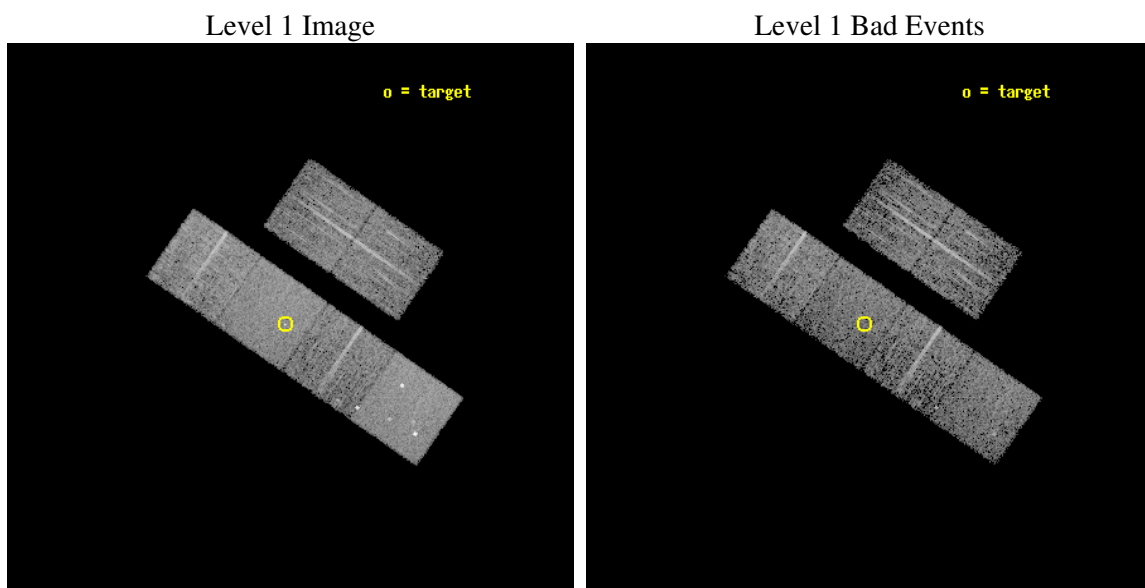
seq_num	700512
obs_id	3073
title	X-RAY WEAK BROAD-LINE QUASARS: ABSORPTION OR INTRINSIC X_RAY WEAKNESS ?
observer	Dr Guido Risaliti
object	HS 1237+4756
dtcycle	0
cycle	P
ra_targ	190.027917
dec_targ	47.667583
ra_nom	190.01493577596
dec_nom	47.663511932536
roll_nom	214.7273312866
revision	2
ontime	4751.9999822974
livetime	4691.8272972107
ontime2	4751.9999822974
ontime3	4751.9999822974
ontime5	4751.9999822974
ontime6	4751.9999822974
ontime7	4751.9999822974
ontime8	4748.7590120435
l2events	47272



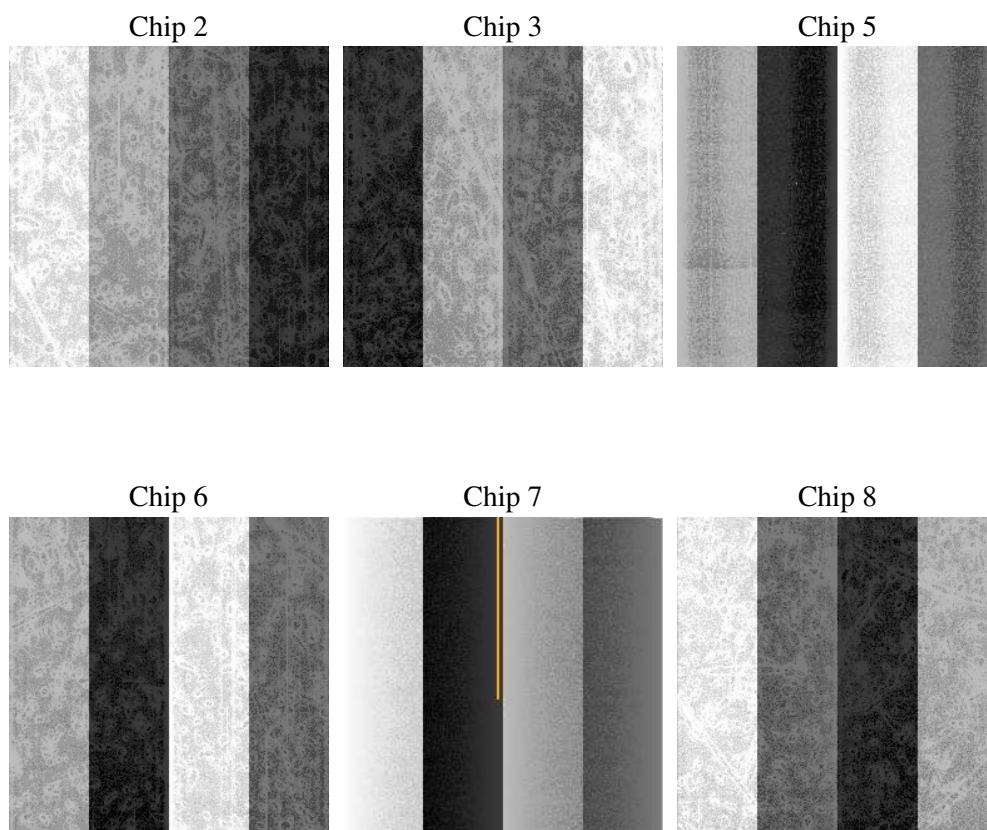
## 2 OBI

### 2.1 OBI

#### 2.1.1 Images



#### 2.1.2 Bias



### 2.1.3 Parameters

obi_num	0
ascdsver	7.6.9
caldsver	3.2.3
date	2006-09-14T20:25:08
revision	2

sched_exp_time	5000.000000
ontime	4757.7912937105
ontime2	4757.7912937105
ontime3	4761.0323037803
ontime5	4761.0323037803
ontime6	4761.0323037803
ontime7	4757.7912937105
ontime8	4757.7911940217
l1events	226138

### 2.1.4 Events

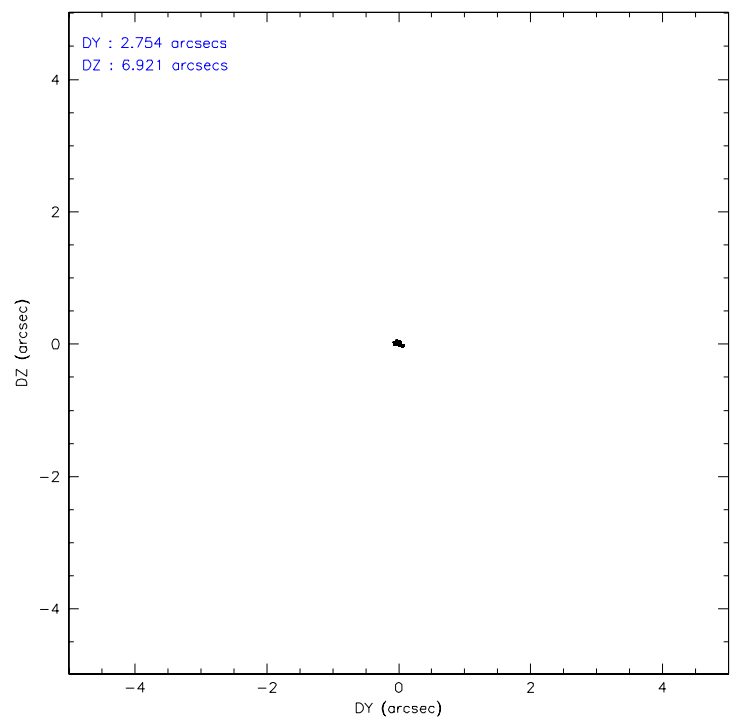
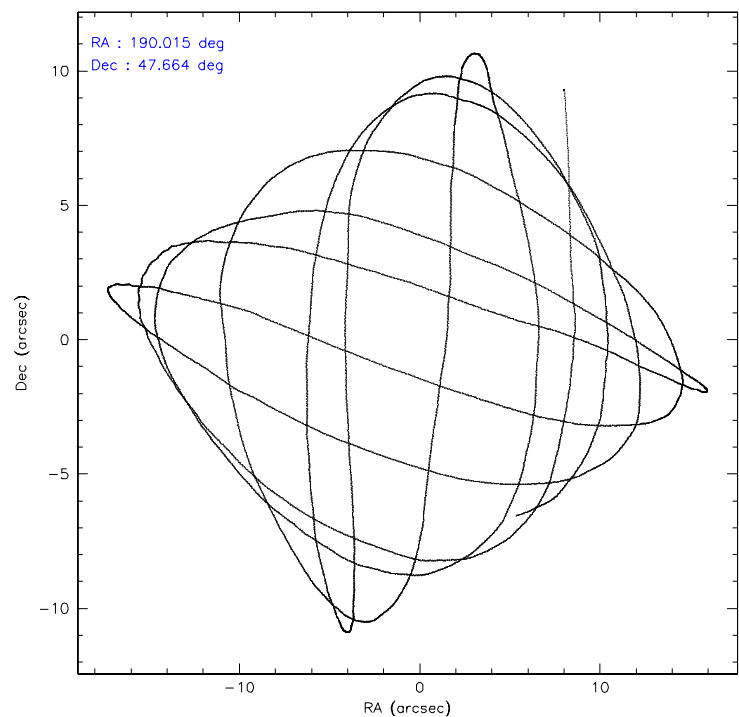
	ccd 2	ccd 3	ccd 5	ccd 6	ccd 7	ccd 8
level 1 events	31715	31112	47176	31423	41273	43439
rejected events	28148	27459	25715	27719	25271	34921
rejected %	88%	88%	54%	88%	61%	80%

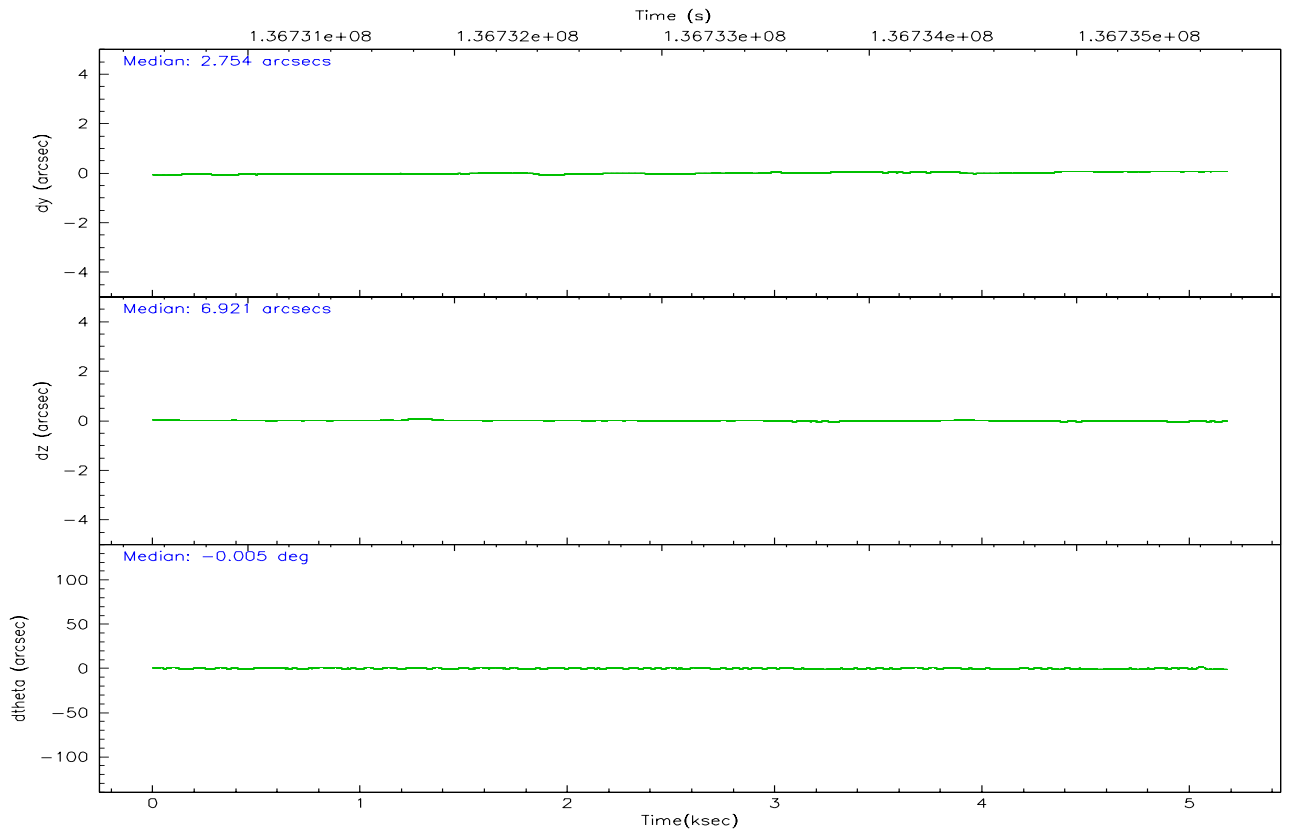
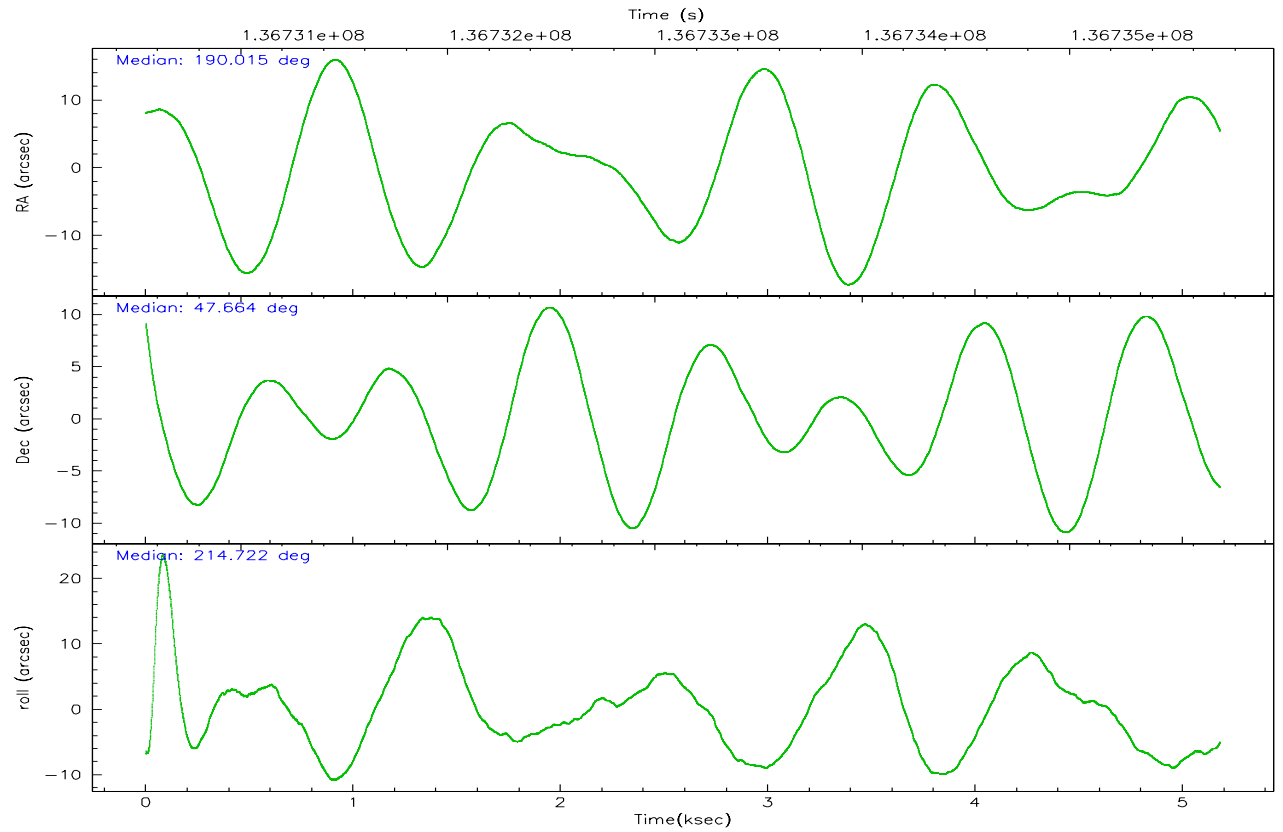
	ccd 2	ccd 3	ccd 5	ccd 6	ccd 7	ccd 8
grade 0 events	1536	1563	2671	1532	1091	2513
	4%	5%	5%	4%	2%	5%
grade 1 events	19	22	122	18	20	29
	0%	0%	0%	0%	0%	0%
grade 2 events	798	786	6545	737	3933	1864
	2%	2%	13%	2%	9%	4%
grade 3 events	311	347	464	354	828	869
	0%	1%	0%	1%	2%	2%
grade 4 events	314	316	455	361	806	881
	0%	1%	0%	1%	1%	2%
grade 5 events	1108	1252	2277	1333	2786	1715
	3%	4%	4%	4%	6%	3%
grade 6 events	615	650	11369	730	9357	2399
	1%	2%	24%	2%	22%	5%
grade 7 events	27014	26176	23273	26358	22452	33169
	85%	84%	49%	83%	54%	76%

## 2.2 Compared Parameters

Parameter	Planned	Actual	Parameter	Planned	Actual
Instrument	ACIS	ACIS	Obspar format version number	6	6
Detector	ACIS-235678	ACIS-235678	Obspar file type	PREDICTED	ACTUAL
Grating	NONE	NONE	Obspar update status	NONE	UPDATED
Data mode	FAINT	FAINT	Number of optional ACIS chips dropped	0	0
Observation mode	POINTING	POINTING	On-chip summing requested	N	N
Pointing RA	190.031632	190.0149357759591	Subarray requested	NONE	NONE
Pointing Dec	47.688333	47.6635119325363	Alternating exposures requested	N	N
Pointing Roll	214.558434	214.7273312865956	Primary exposure time	0.000000	3.2
SIM focus pos (mm)	-0.684267	-0.6828225247311905			
SIM defocus (mm)	0	0.001444936568705701			
SIM translation stage pos (mm)	-190.132523	-190.1400660498719			
SIM translation stage offset (mm)	0	0.00754346686406393			
Observation start time	136730728.184000	136730103.38652			
Observation start date	2002-05-02T12:44:24	2002-05-02T12:35:03			
Observation end time	136735728.184000	136736187.27427			
Observation end date	2002-05-02T14:07:44	2002-05-02T14:16:27			
Read mode	TIMED	TIMED			

### 2.3 Aspect





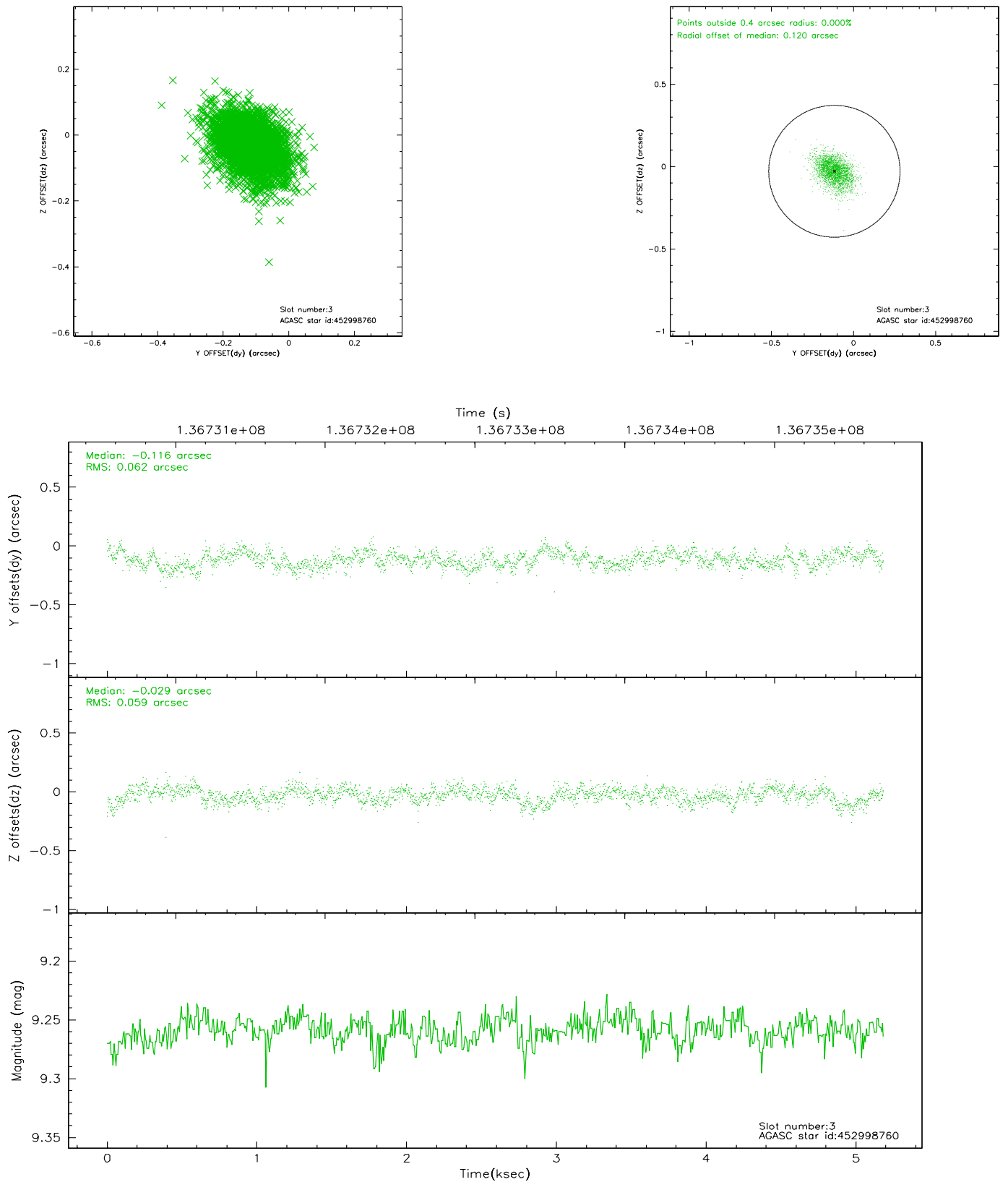
### Slot Statistics

slot	status	id	mag	n_pts	med_dy	med_dz	dr1	dr2	ra	dec	mean_y	mean_z
0	FID	ACIS-S-2	7.11	1264	-0.009	0.029	0.006	0.010	0.000000	0.000000	-755.38	-1728.06
1	FID	ACIS-S-4	7.20	1264	-0.076	-0.004	0.005	0.010	0.000000	0.000000	2157.28	179.21
2	FID	ACIS-S-5	7.24	1264	0.053	-0.017	0.006	0.011	0.000000	0.000000	-1806.67	174.16
3	GUIDE	452998760	9.26	2527	-0.116	-0.029	0.089	0.150	190.429439	47.859255	-1142.05	36.19
4	GUIDE	452998392	10.02	2526	-0.035	0.041	0.139	0.224	191.045793	47.569981	-1796.91	1734.84
5	GUIDE	452990752	10.65	2484	-0.062	0.212	0.164	0.263	189.321365	47.828909	1121.27	-1395.97
6	GUIDE	452998240	9.37	2526	-0.020	0.143	0.089	0.143	189.447374	48.065399	384.98	-1919.97
7	BAD	452994656	10.48	2409	0.240	-0.387	0.183	0.304	190.950045	47.293412	-1048.53	2430.83

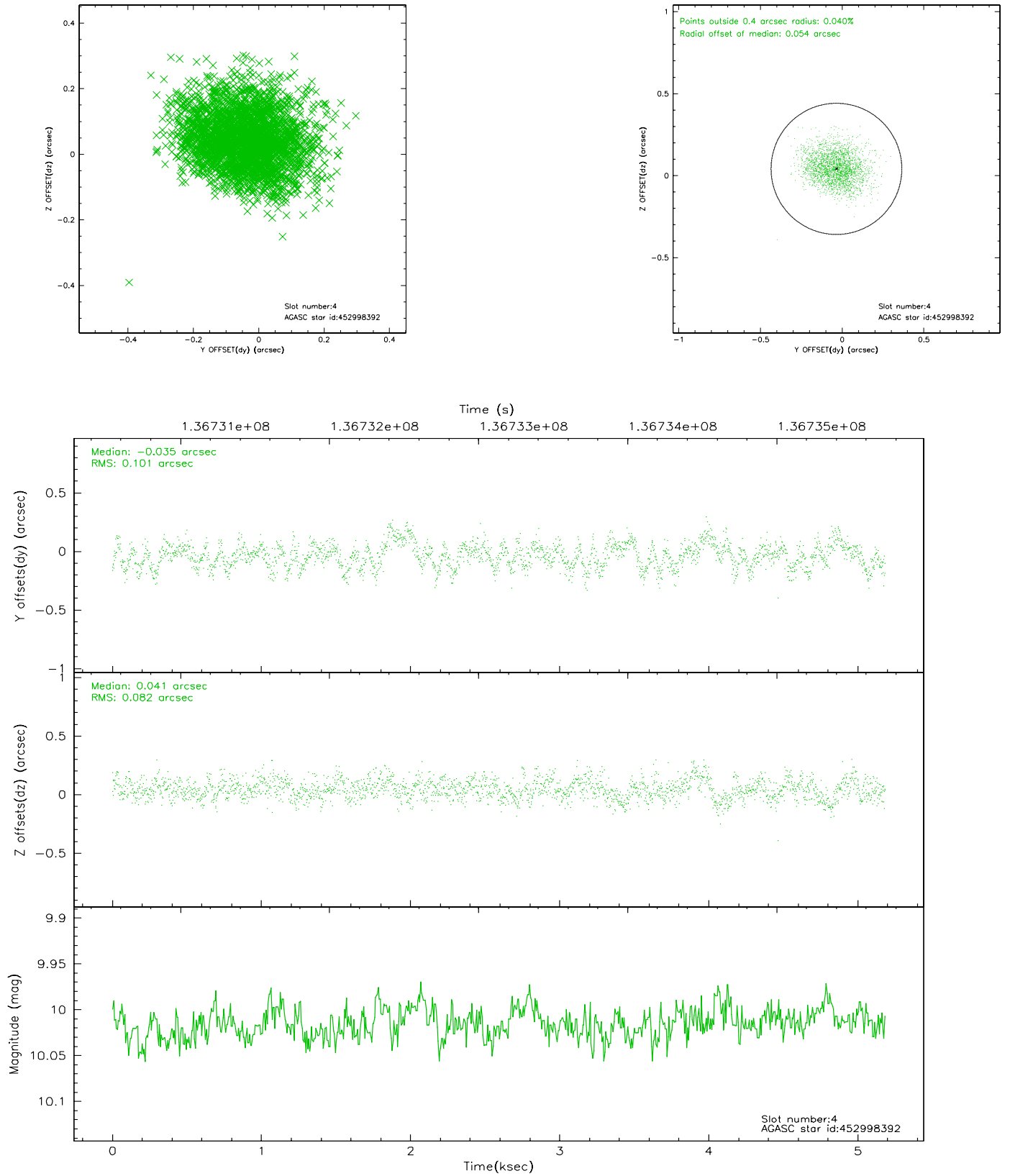


## 2.4 Star Slots

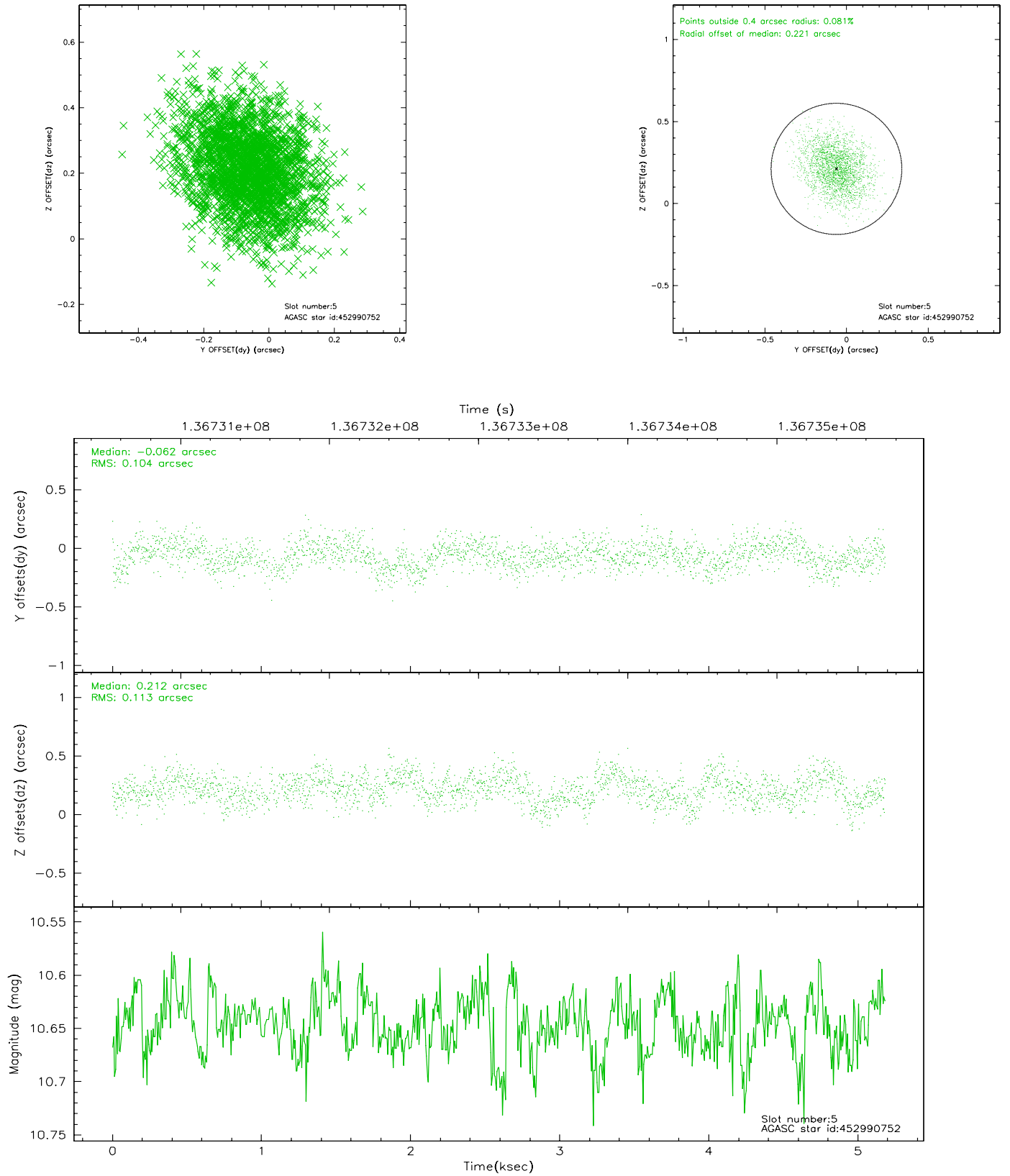
### 2.4.1 Slot 3



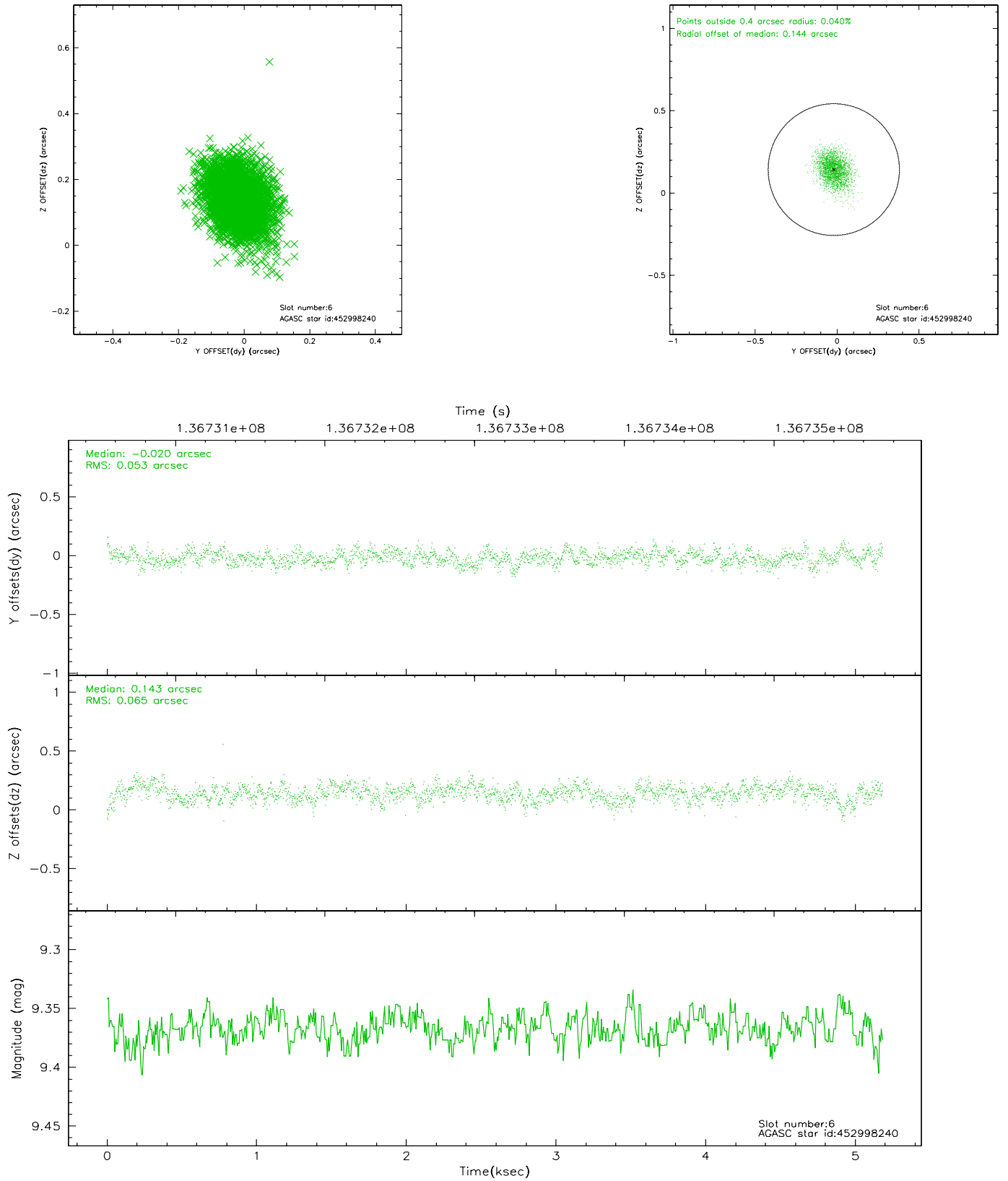
## 2.4.2 Slot 4



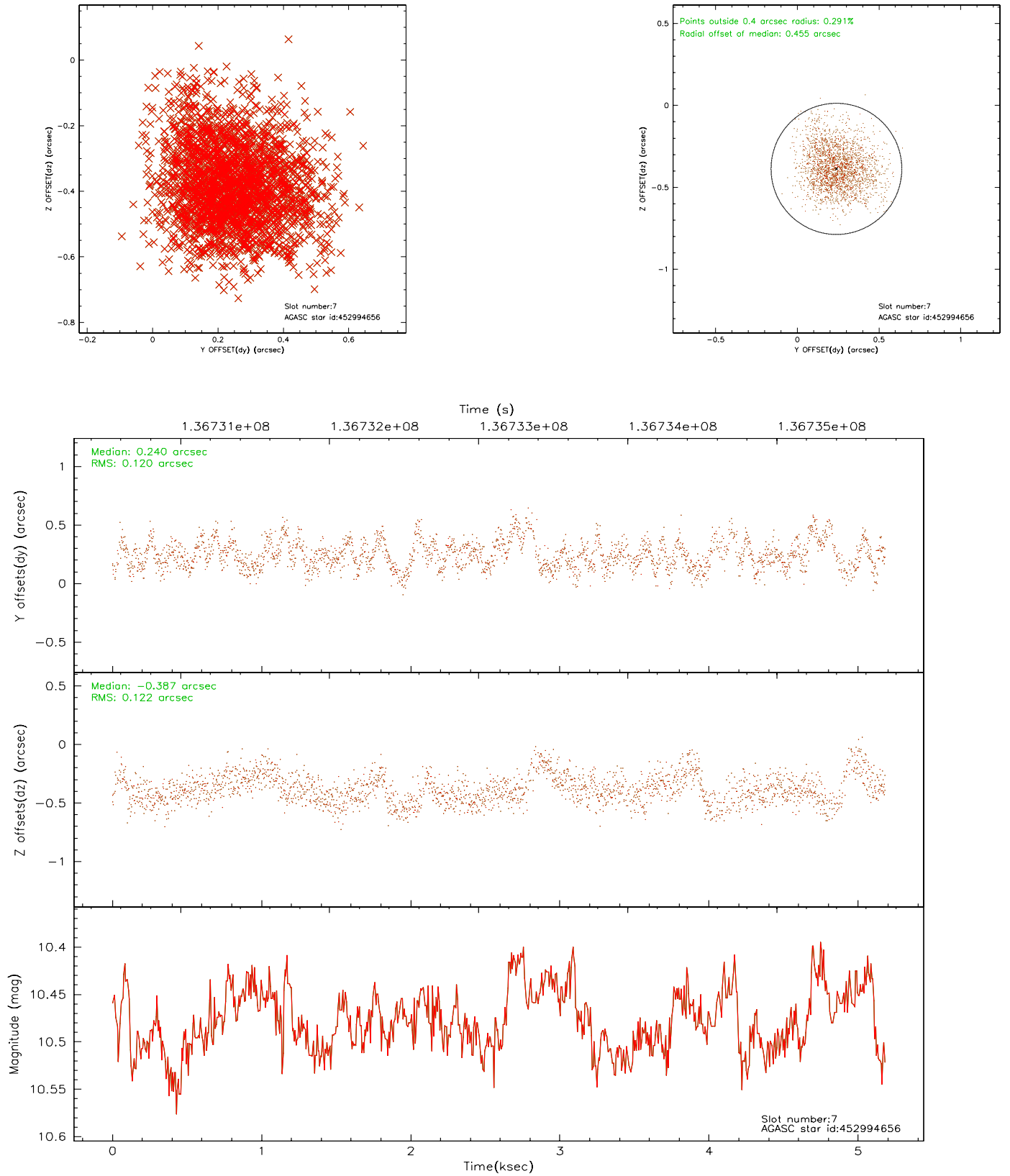
### 2.4.3 Slot 5



## 2.4.4 Slot 6

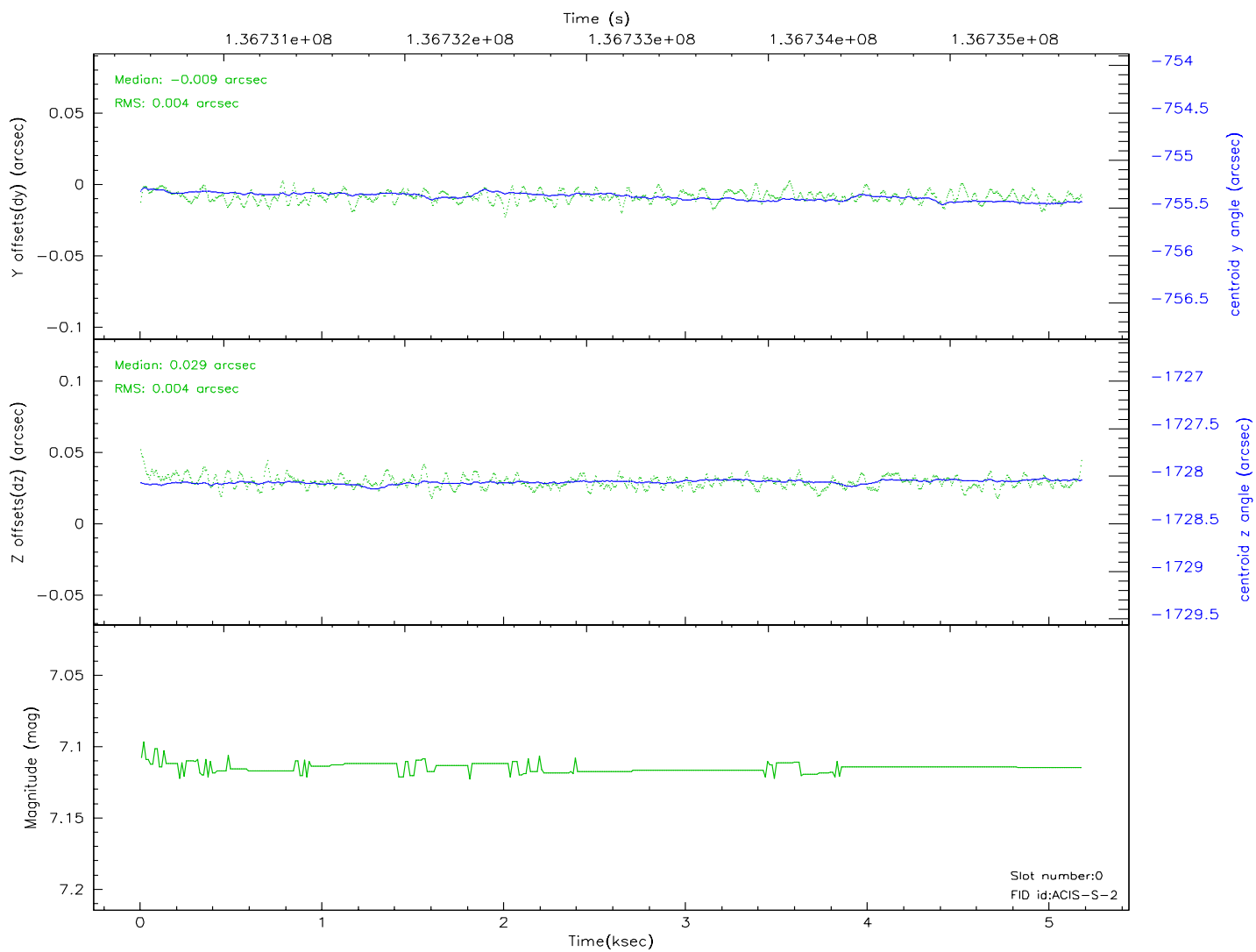
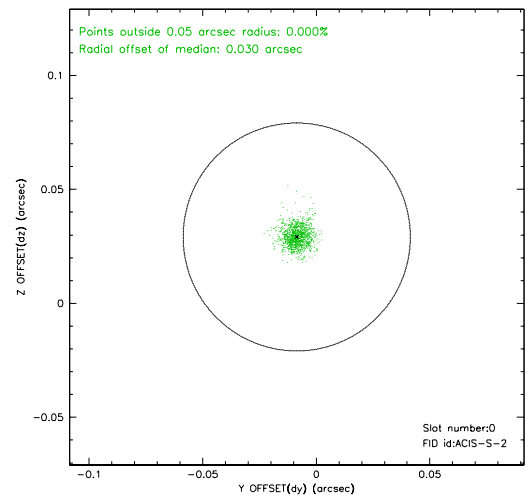
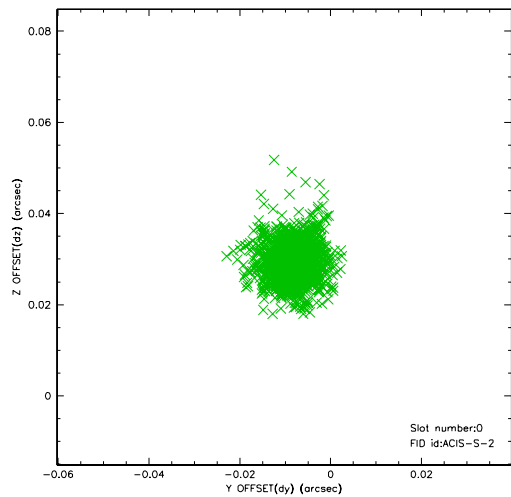


## 2.4.5 Slot 7

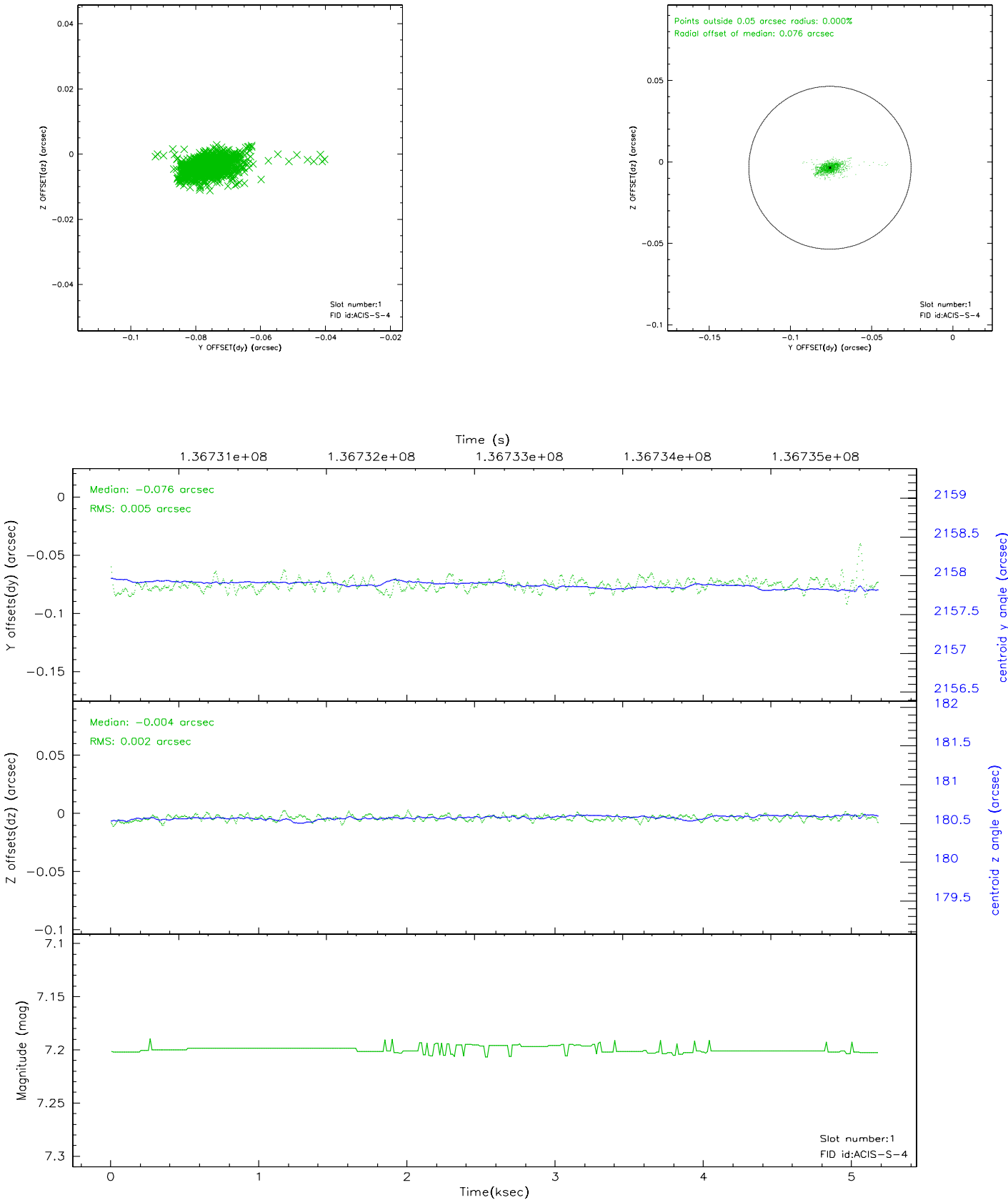


## 2.5 FID Slots

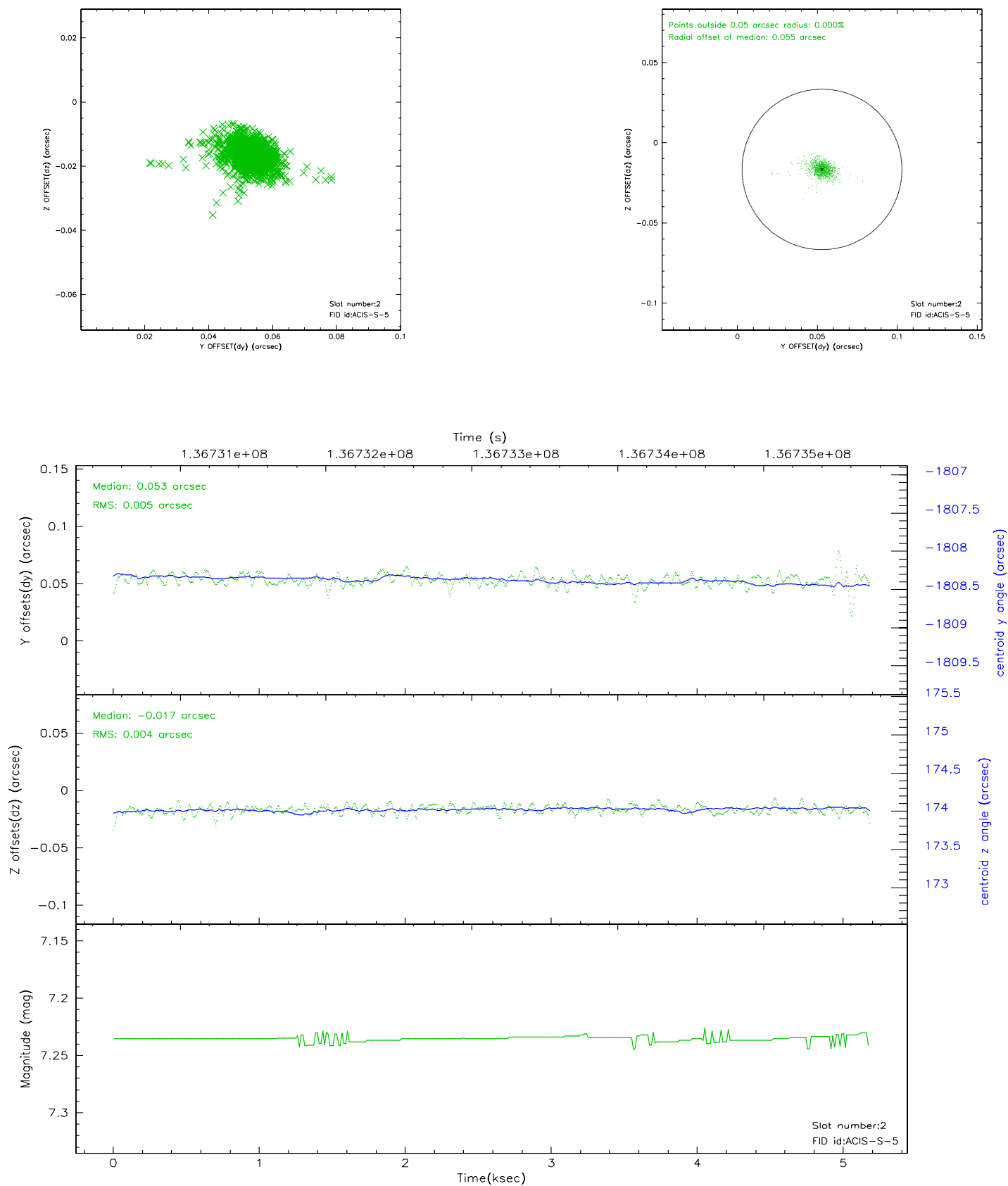
### 2.5.1 Slot 0



2.5.2 Slot 1

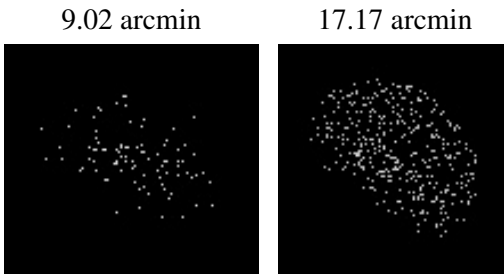


### 2.5.3 Slot 2





### 3 Point Sources



# A Summary

## A.1 Status

V&V Scientist	Jen Lauer
V&V Date (YYYY-MM-DD)	2006.09.18
V&V Edition	1
V&V Disposition and Status	OK
V&V Charge Time	4.755

## A.2 Comments

Slot 7 is only tracked for 93% of the observation and is not included in the aspect solution calculations. The aspect solution should not be degraded by the loss of one guide star.