

V&V Reference Report

L2 ASCDS Version : 7.6.8.1

Observation 3003 - L2 Version 001
Chandra X-Ray Center

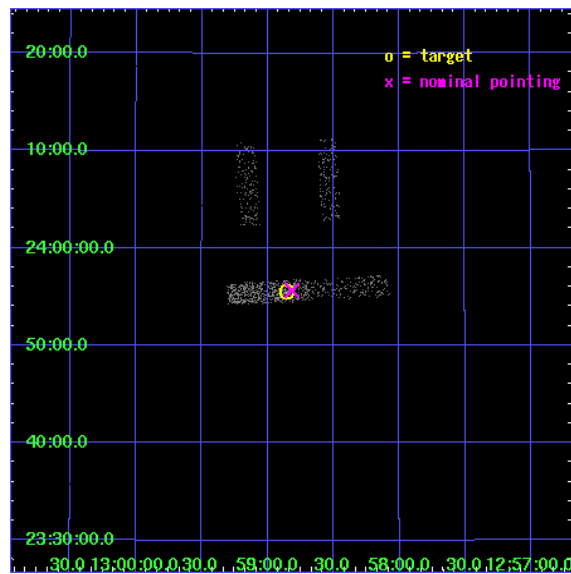
L2 Processing Date : Sep 9 2006

Contents

1	Front	2
2	OBI	3
2.1	OBI	3
2.1.1	Images	3
2.1.2	Bias	3
2.1.3	Parameters	4
2.1.4	Events	4
2.2	Compared Parameters	5
2.3	Aspect	6
2.4	Star Slots	9
2.4.1	Slot 3	9
2.4.2	Slot 4	10
2.4.3	Slot 5	11
2.4.4	Slot 6	12
2.4.5	Slot 7	13
2.5	FID Slots	14
2.5.1	Slot 0	14
2.5.2	Slot 1	15
2.5.3	Slot 2	16
3	Point Sources	17
A	Summary	18
A.1	Status	18
A.2	Comments	18

1 Front

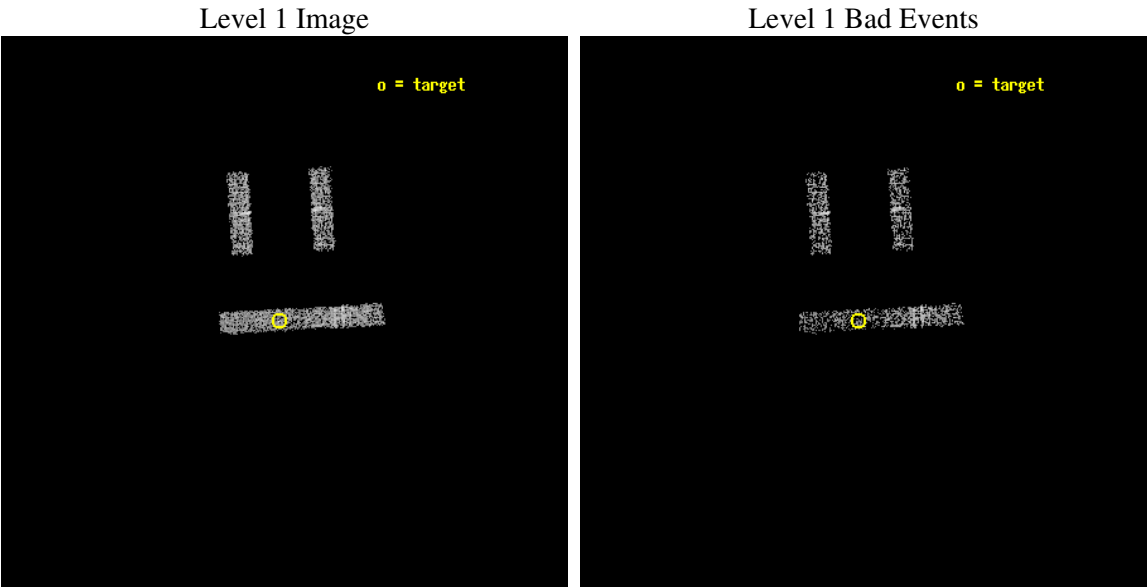
seq_num	700442
obs_id	3003
title	CHANDRA SNAPSHOT OBSERVATIONS OF SOFT X-RAY TRANSIENT AGN
observer	Dr Rick Edelson
object	RX J1258+23
dtcycle	0
cycle	P
ra_targ	194.714167
dec_targ	23.925556
ra_nom	194.70393972704
dec_nom	23.927774647078
roll_nom	176.78214386968
revision	3
ontime	2604.25
livetime	433.40600452668
ontime2	2604.25
ontime3	2604.25
ontime6	2604.25
ontime7	2604.25
l2events	1200



2 OBI

2.1 OBI

2.1.1 Images

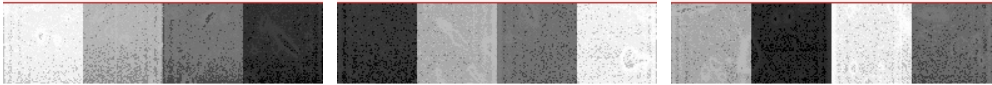


2.1.2 Bias

Chip 2

Chip 3

Chip 6



Chip 7



2.1.3 Parameters

obi_num	1
ascdsver	7.6.8.1
caldsver	3.2.3
date	2006-09-09T13:02:59
revision	3

sched_exp_time	2000.000000
ontime	2606.5897458196
ontime2	2606.5897458196
ontime3	2606.5897458196
ontime6	2606.5897458196
ontime7	2606.5897458196
l1events	11694

2.1.4 Events

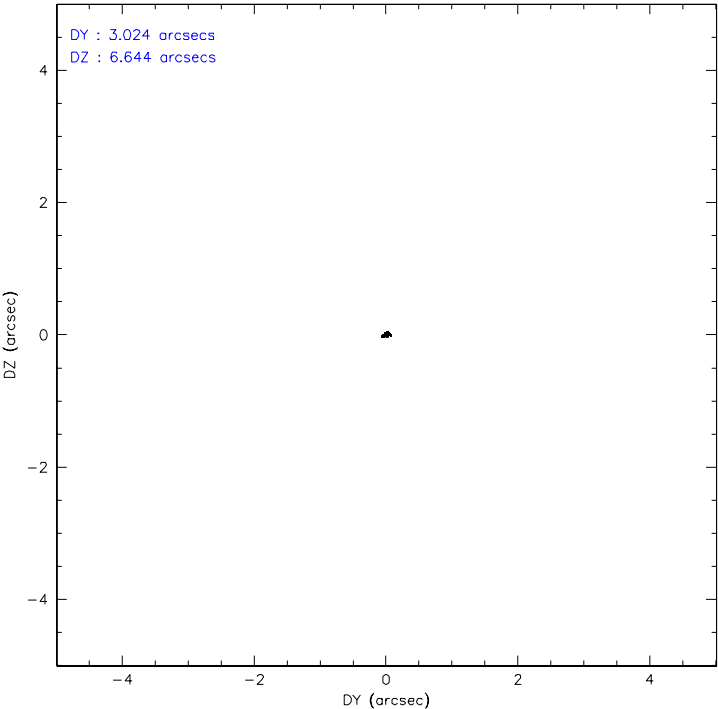
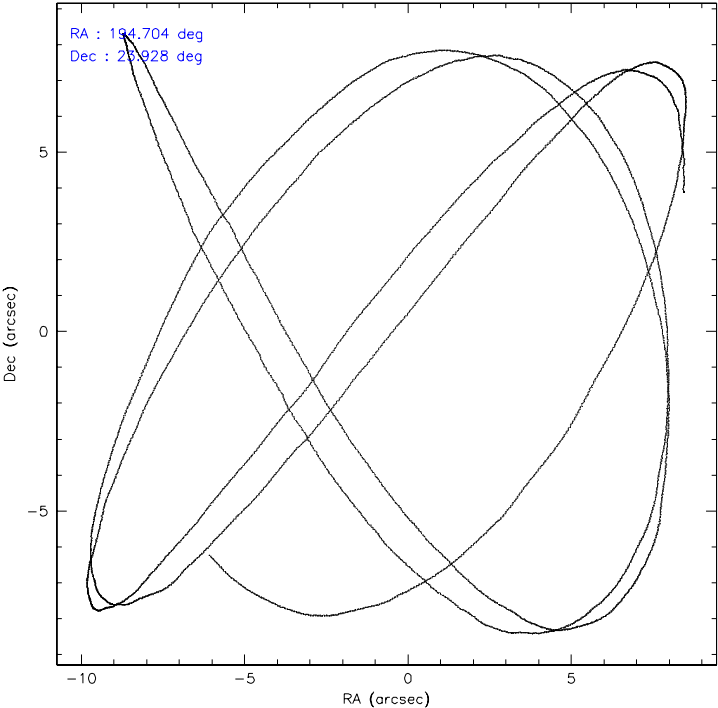
	ccd 2	ccd 3	ccd 6	ccd 7
level 1 events	2819	3136	3297	2442
rejected events	2590	2905	3035	1700
rejected %	91%	92%	92%	69%

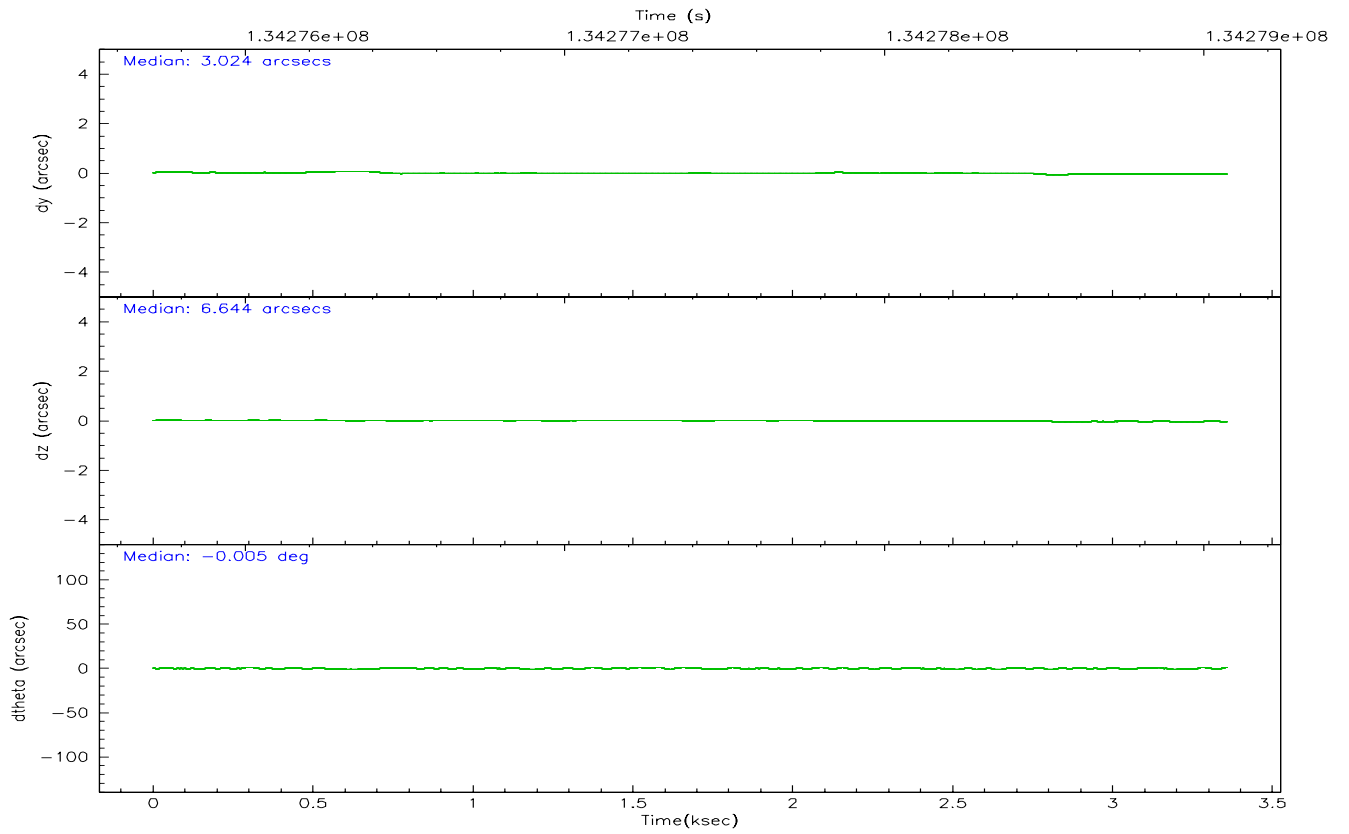
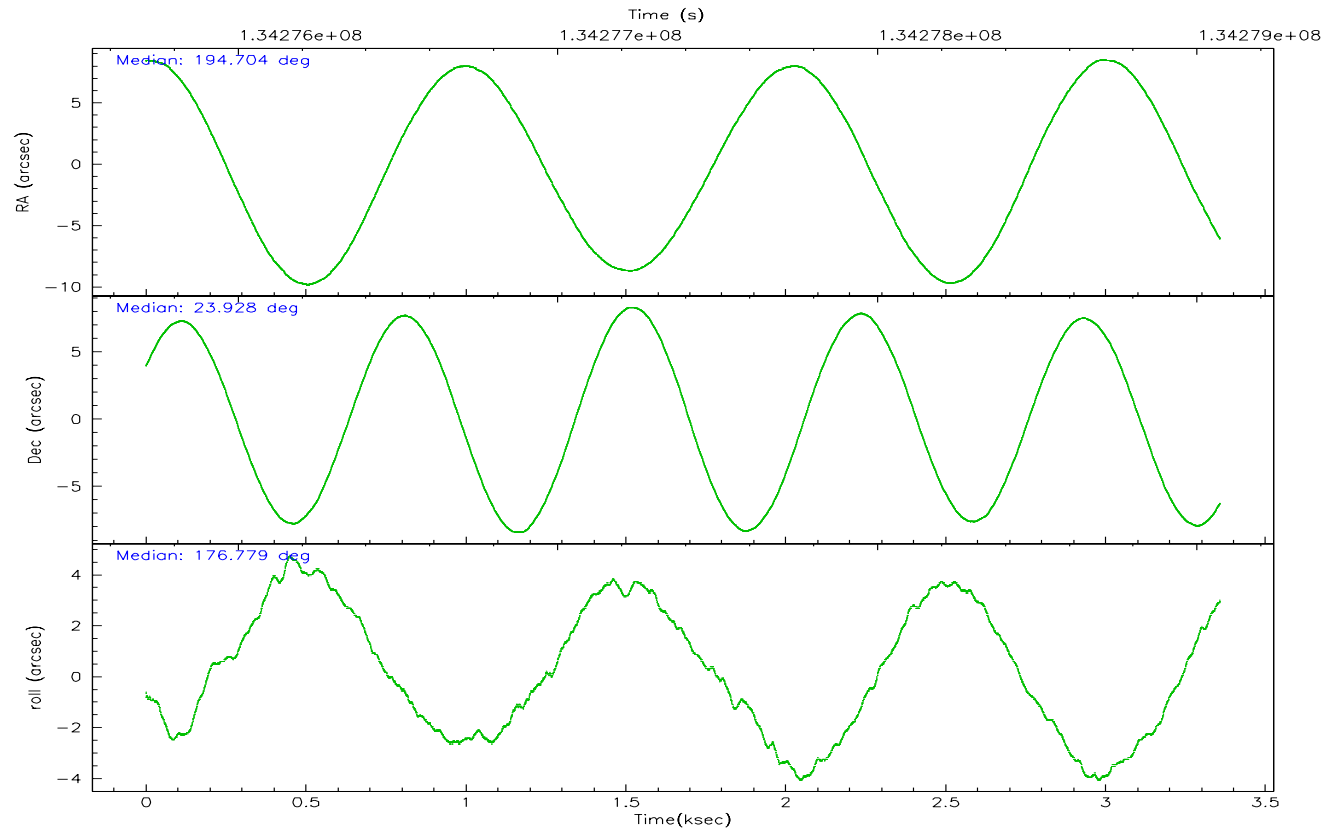
	ccd 2	ccd 3	ccd 6	ccd 7
grade 0 events	51	48	62	75
	1%	1%	1%	3%
grade 1 events	3	1	0	1
	0%	0%	0%	0%
grade 2 events	33	37	44	162
	1%	1%	1%	6%
grade 3 events	49	55	59	72
	1%	1%	1%	2%
grade 4 events	60	59	59	73
	2%	1%	1%	2%
grade 5 events	72	58	68	144
	2%	1%	2%	5%
grade 6 events	36	32	38	360
	1%	1%	1%	14%
grade 7 events	2515	2846	2967	1555
	89%	90%	89%	63%

2.2 Compared Parameters

Parameter	Planned	Actual	Parameter	Planned	Actual
Instrument	ACIS	ACIS	Obspar format version number	6	6
Detector	ACIS-2367	ACIS-2367	Obspar file type	PREDICTED	ACTUAL
Grating	NONE	NONE	Obspar update status	NONE	UPDATED
Data mode	FAINT	FAINT	On-chip summing requested	N	N
Observation mode	POINTING	POINTING	Subarray requested	1/4	1/4
Pointing RA	194.730288	194.7039397270399	Subarray start row	0	385
Pointing Dec	23.940383	23.92777464707818	Subarray row count	1024	256
Pointing Roll	176.614817	176.782143869678	Alternating exposures requested	N	N
SIM focus pos (mm)	-0.684267	-0.6828225247311905	Primary exposure time	0.000000	0.2
SIM defocus (mm)	0	0.001444936568705701			
SIM translation stage pos (mm)	-190.132523	-190.1400660498719			
SIM translation stage offset (mm)	0	0.00754346686406393			
Observation start time	134277071.184000	134275525.53667			
Observation start date	2002-04-04T03:10:07	2002-04-04T02:45:25			
Observation end time	134279071.184000	134279597.34933			
Observation end date	2002-04-04T03:43:27	2002-04-04T03:53:17			
Read mode	TIMED	TIMED			

2.3 Aspect



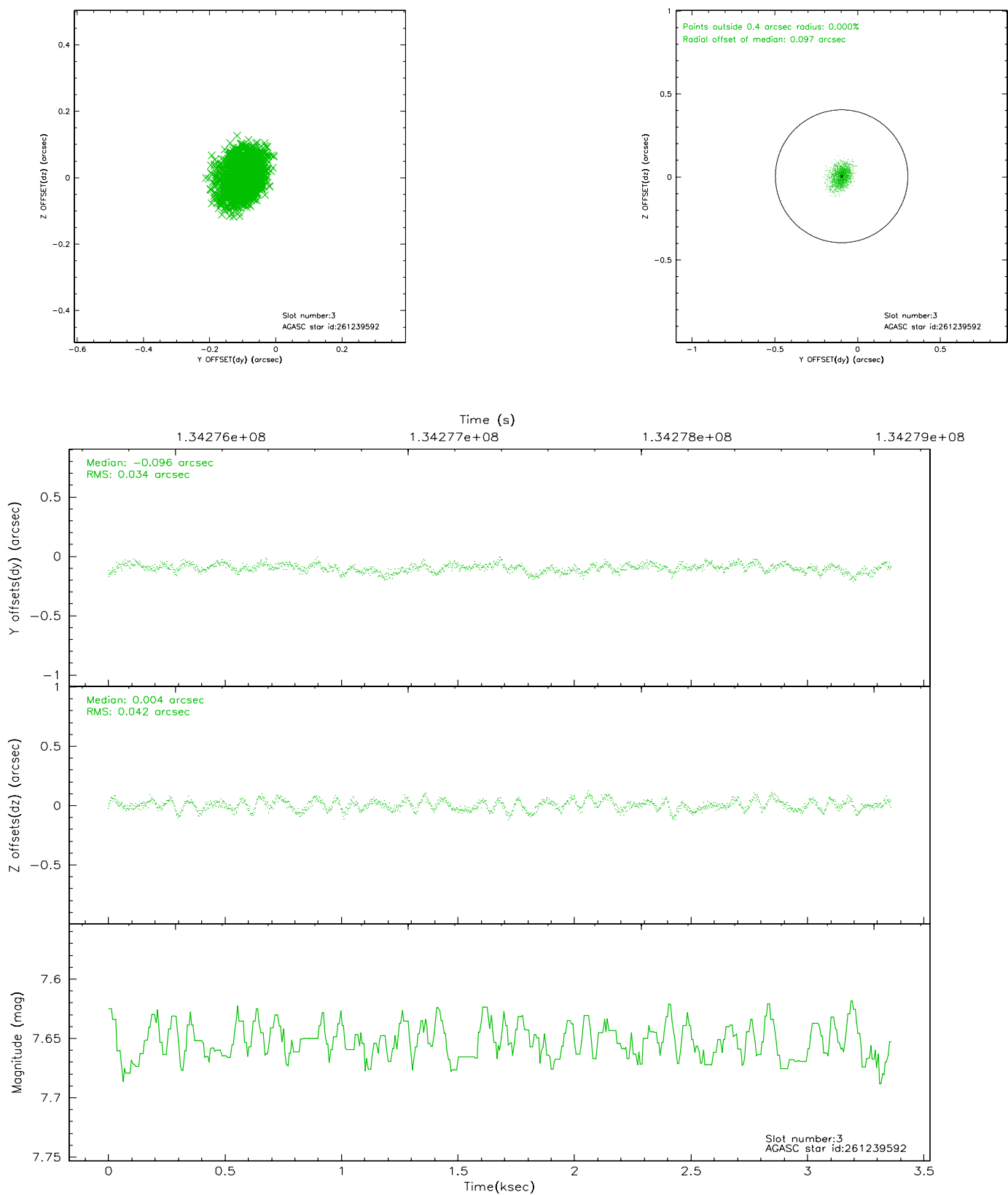


Slot Statistics

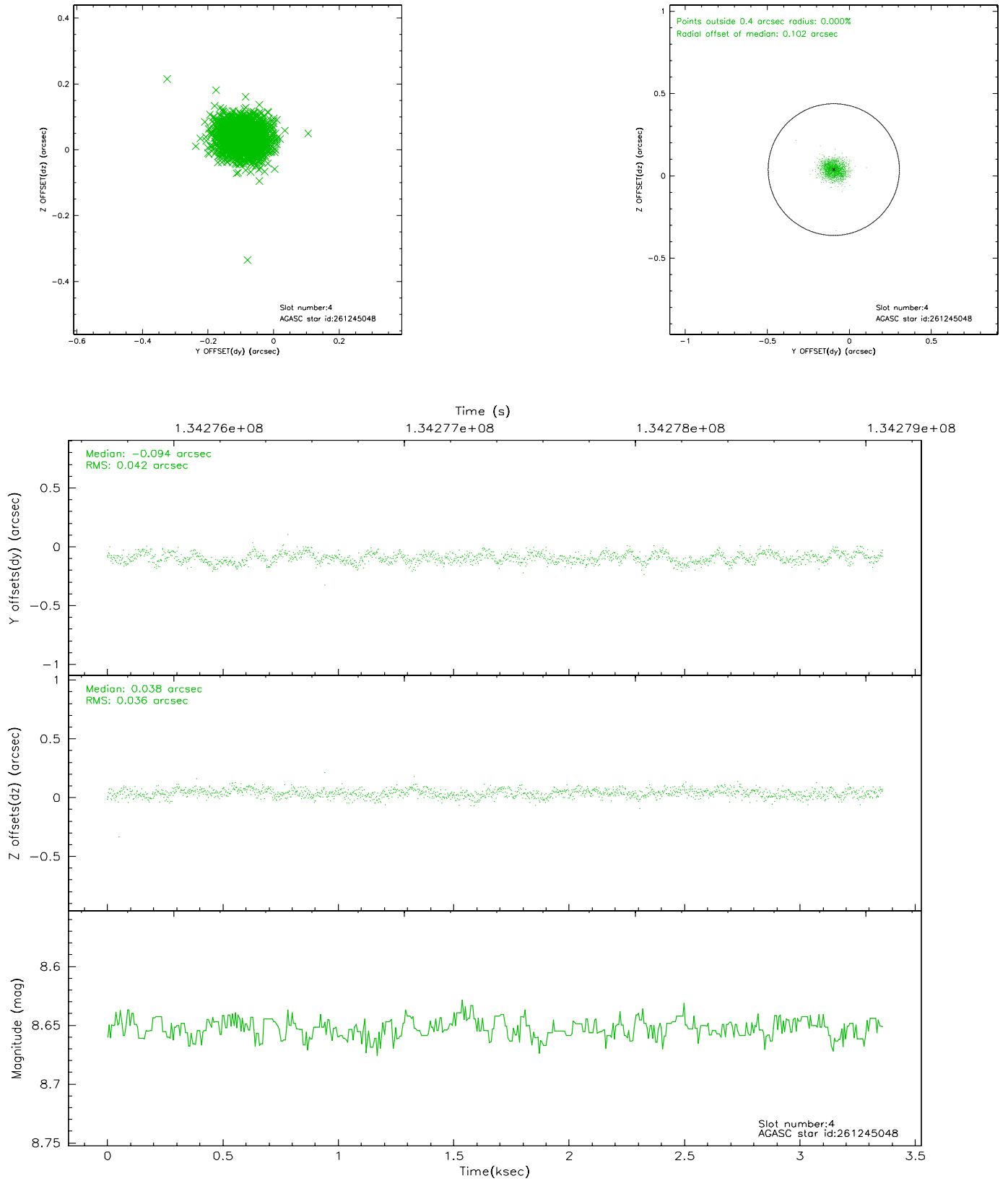
slot	status	id	mag	n_pts	med_dy	med_dz	dr1	dr2	ra	dec	mean_y	mean_z
0	FID	ACIS-S-2	7.12	820	-0.013	0.031	0.006	0.011	0.000000	0.000000	-755.66	-1727.78
1	FID	ACIS-S-4	7.20	820	-0.064	-0.002	0.005	0.009	0.000000	0.000000	2156.69	178.76
2	FID	ACIS-S-5	7.24	820	0.046	-0.020	0.006	0.010	0.000000	0.000000	-1806.03	174.51
3	GUIDE	261239592	7.65	1640	-0.096	0.004	0.058	0.094	195.264873	24.316318	-1670.03	-1457.58
4	GUIDE	261245048	8.65	1640	-0.094	0.038	0.058	0.093	194.015631	23.574141	2275.98	1449.19
5	GUIDE	261243888	8.43	1640	0.017	0.012	0.058	0.101	195.146571	23.651749	-1429.56	955.41
6	GUIDE	261237448	9.03	1638	-0.049	0.059	0.073	0.116	194.252940	24.397499	1659.52	-1551.97
7	GUIDE	261247520	9.56	1638	0.222	-0.111	0.085	0.134	195.028104	23.710956	-1026.78	764.76

2.4 Star Slots

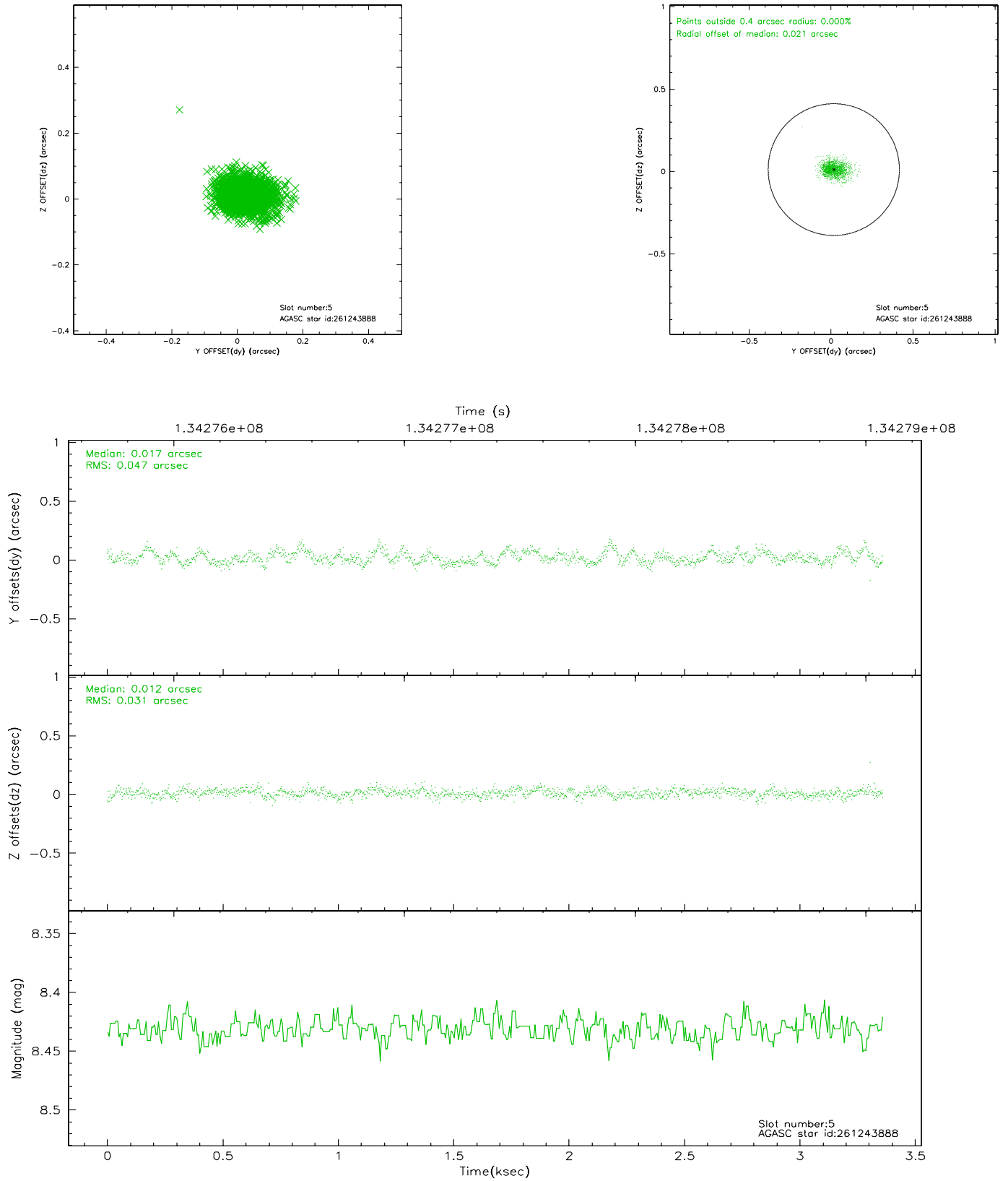
2.4.1 Slot 3



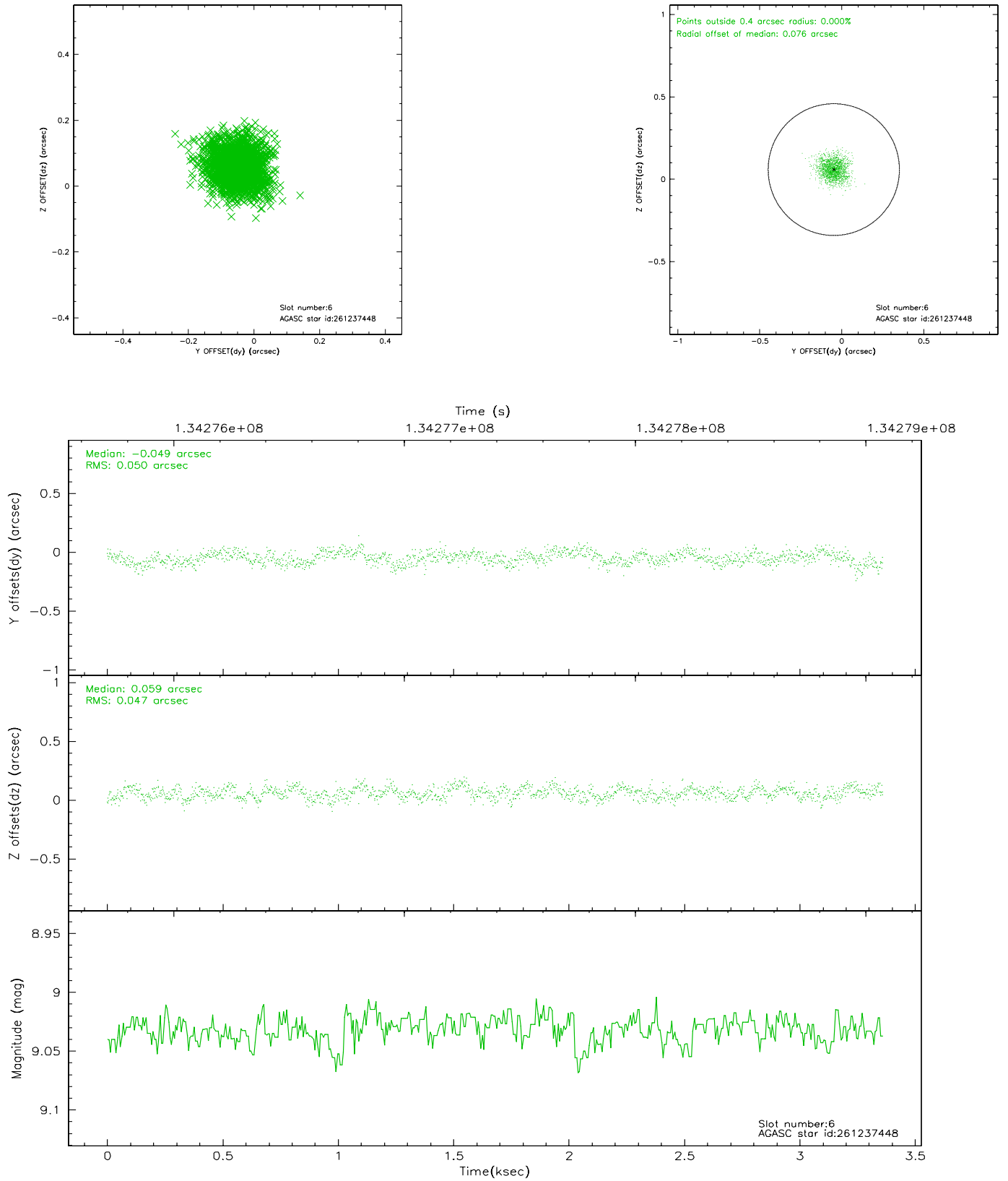
2.4.2 Slot 4



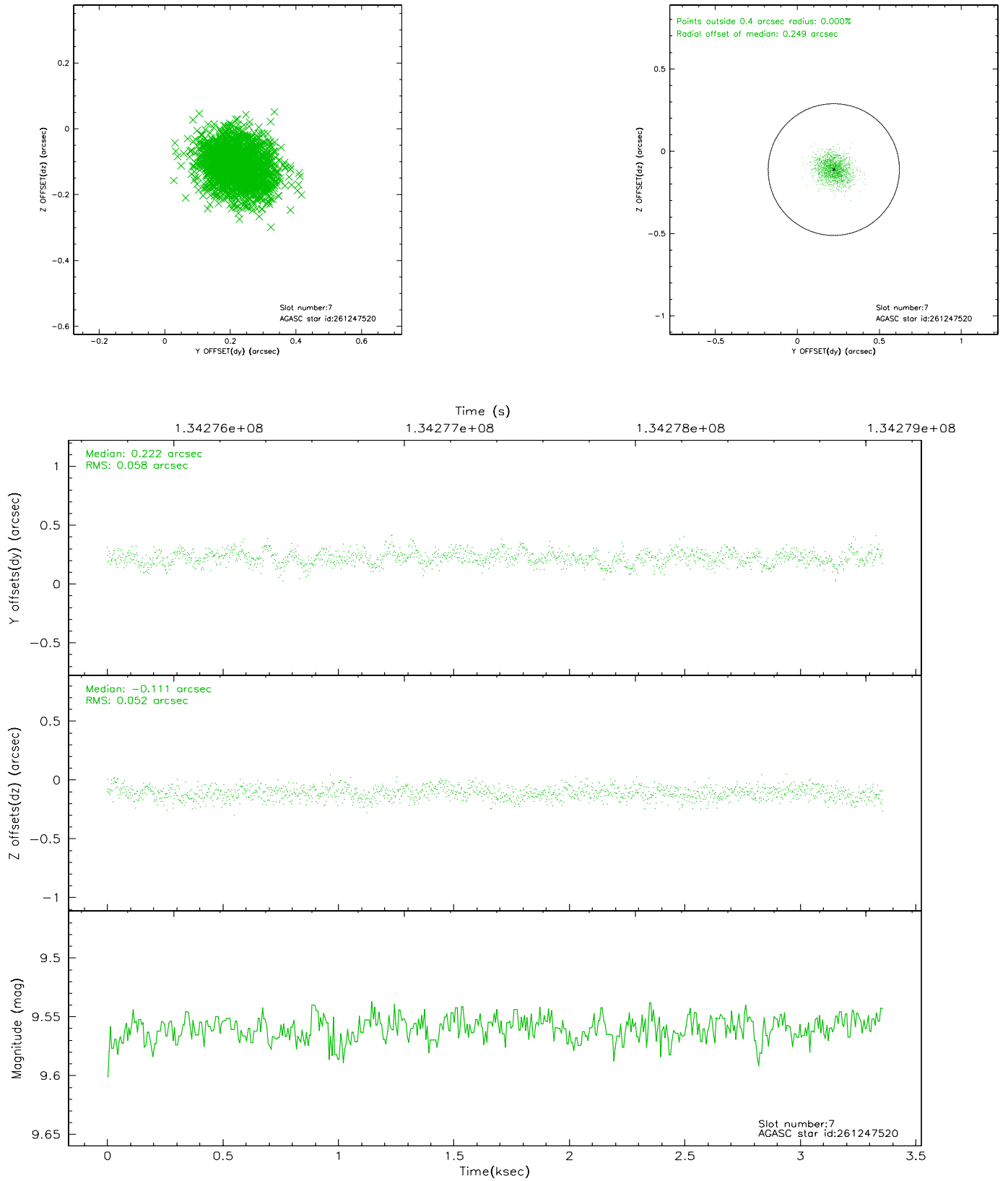
2.4.3 Slot 5



2.4.4 Slot 6

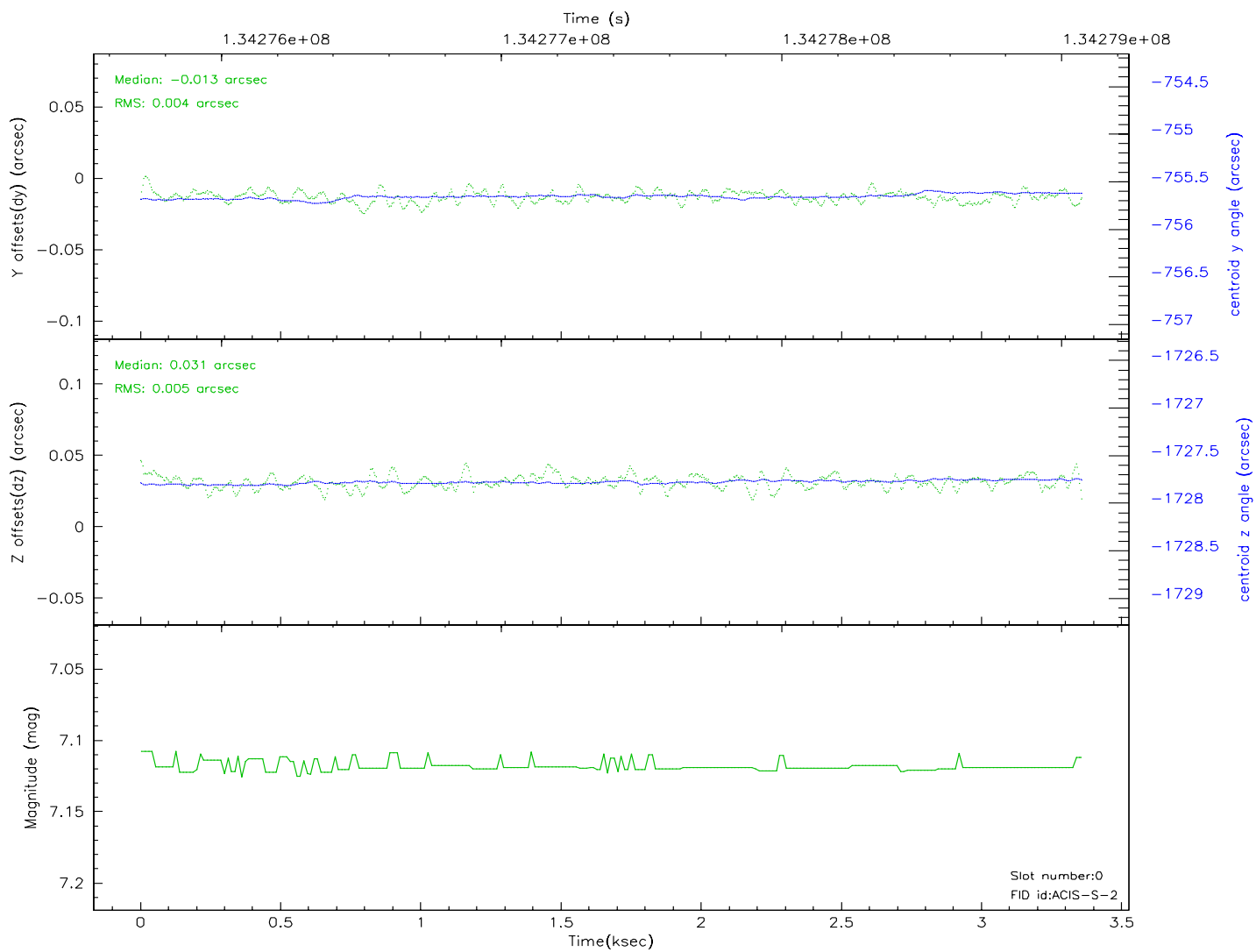
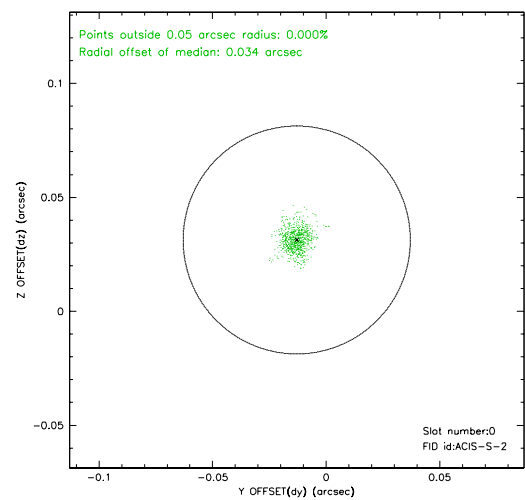
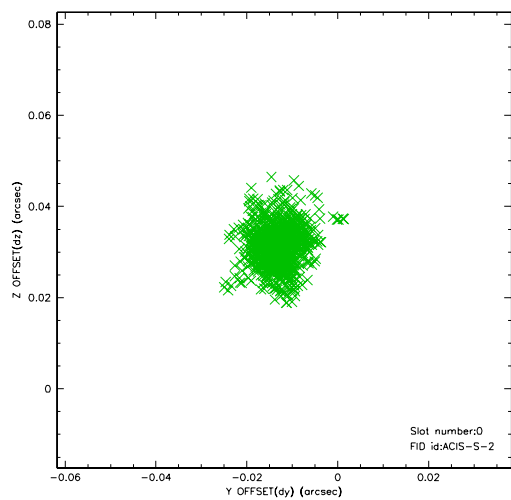


2.4.5 Slot 7

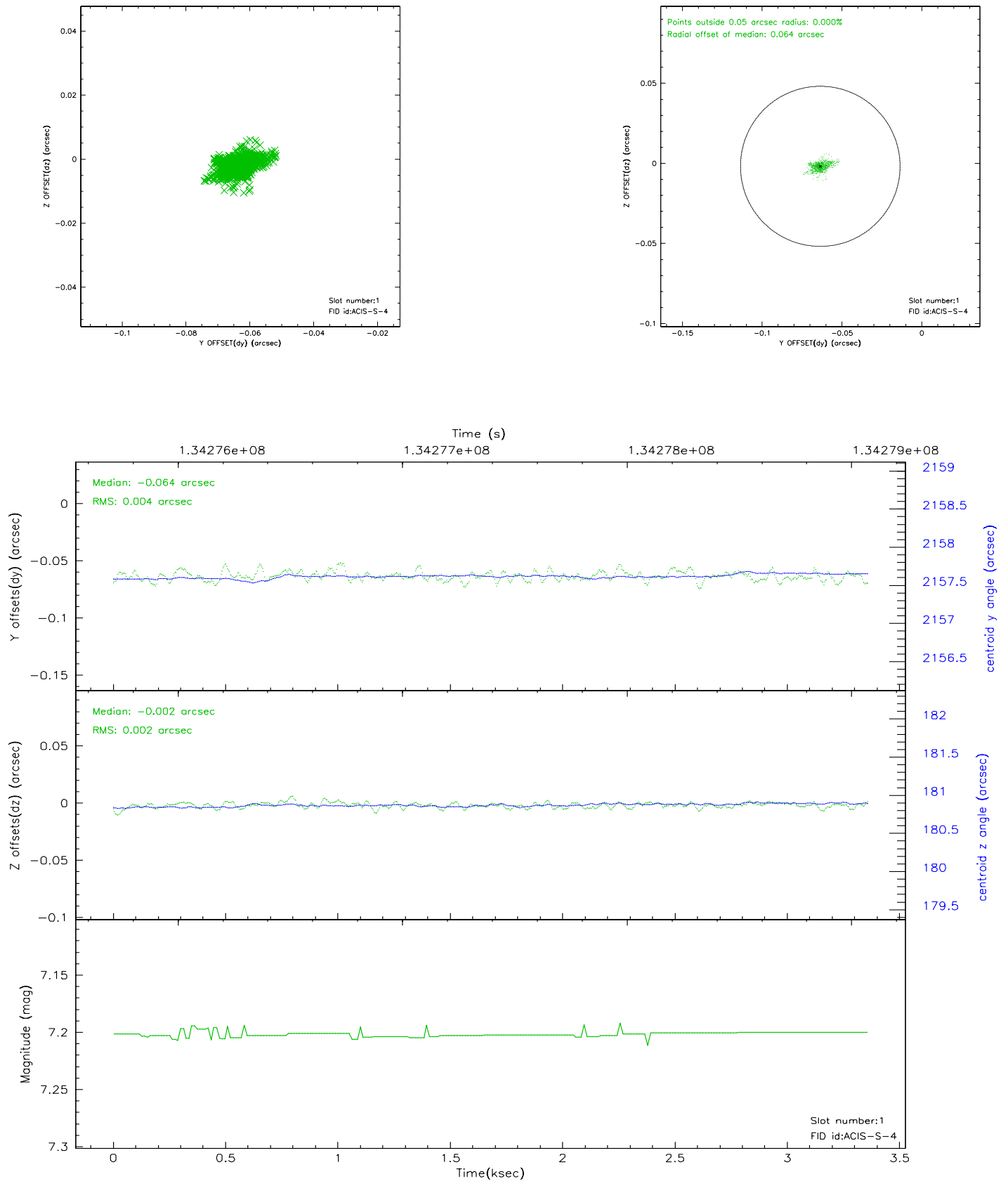


2.5 FID Slots

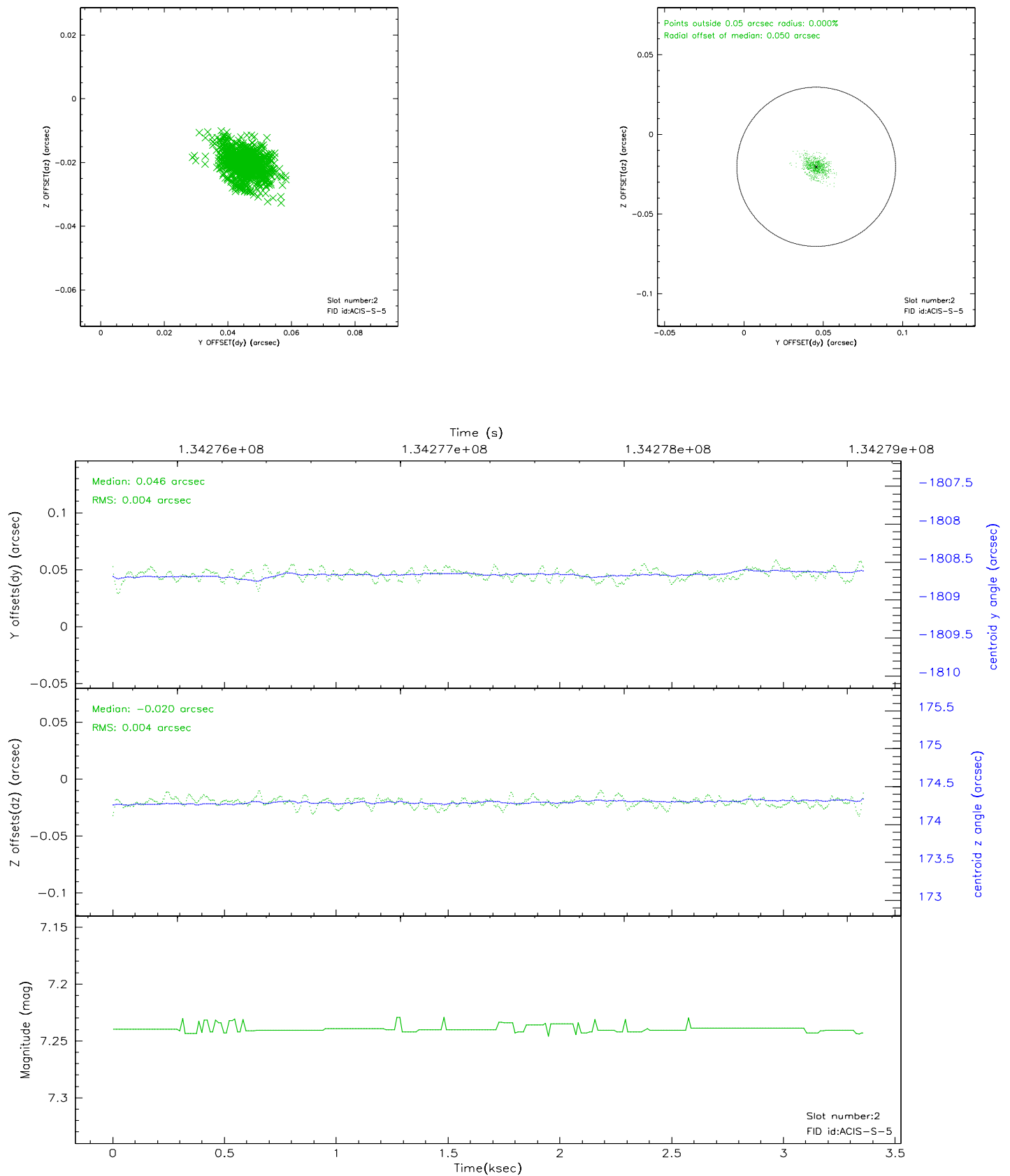
2.5.1 Slot 0



2.5.2 Slot 1



2.5.3 Slot 2



3 Point Sources

A Summary

A.1 Status

V&V Scientist	Jen Lauer
V&V Date (YYYY-MM-DD)	2006.09.10
V&V Edition	1
V&V Disposition and Status	OK
V&V Charge Time	2.604

A.2 Comments