

V&V Reference Report

L2 ASCDS Version : 7.6.9

Observation 2963 - L2 Version 001
Chandra X-Ray Center

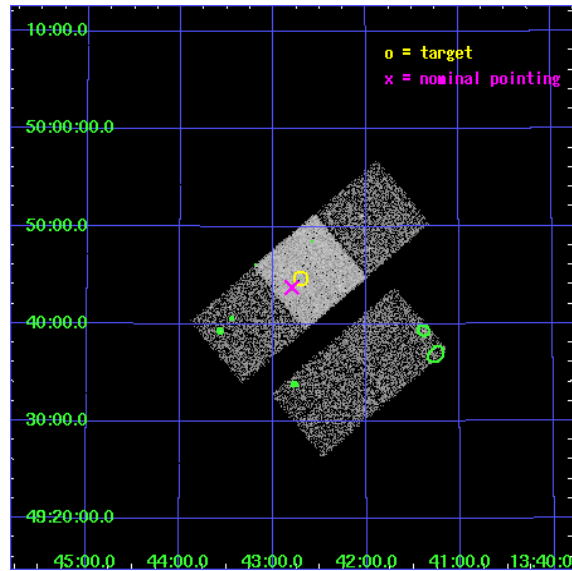
L2 Processing Date : Oct 4 2006

Contents

1	Front	2
2	OBI	3
2.1	OBI	3
2.1.1	Images	3
2.1.2	Bias	3
2.1.3	Parameters	4
2.1.4	Events	4
2.2	Compared Parameters	5
2.3	Aspect	6
2.4	Star Slots	9
2.4.1	Slot 3	9
2.4.2	Slot 4	10
2.4.3	Slot 5	11
2.4.4	Slot 6	12
2.4.5	Slot 7	13
2.5	FID Slots	14
2.5.1	Slot 0	14
2.5.2	Slot 1	15
2.5.3	Slot 2	16
3	Point Sources	17
A	Summary	18
A.1	Status	18
A.2	Comments	18

1 Front

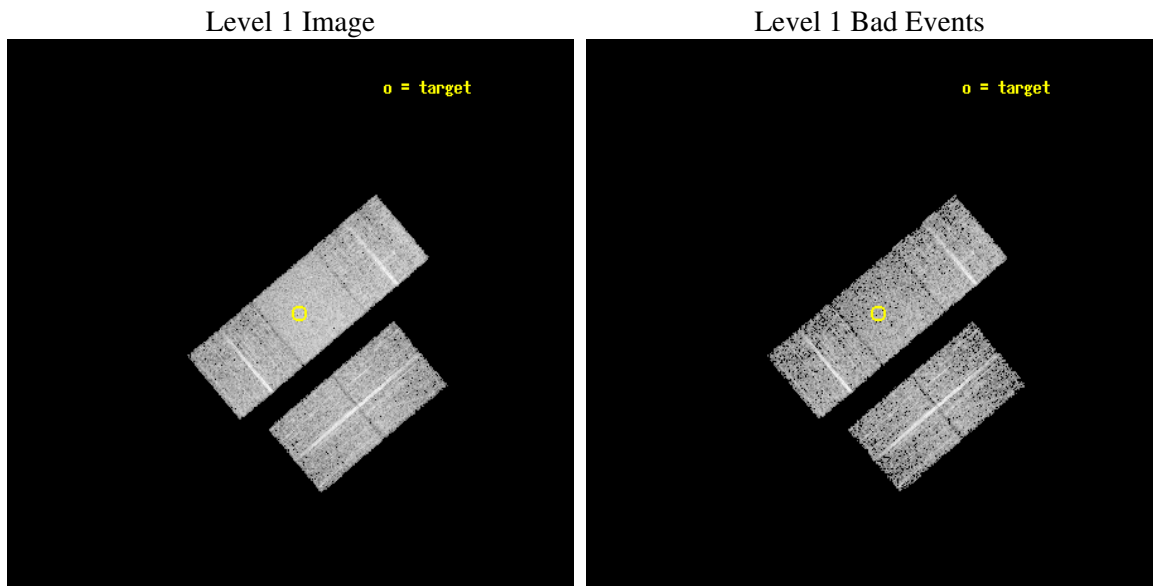
seq_num	700402
obs_id	2963
title	A SNAPSHOT SURVEY OF THE OPTICALLY SELECTED TYPE-2 QUASARS
observer	PROF. S. DJORGOVSKI
object	PSS 1342+4944
dtcycle	0
cycle	P
ra_targ	205.677083
dec_targ	49.744444
ra_nom	205.69981000191
dec_nom	49.729736068836
roll_nom	319.77096878681
revision	2
ontime	5102.5999901891
livetime	5035.9307648378
ontime2	5102.5999901891
ontime3	5102.5999901891
ontime6	5102.5999901891
ontime7	5102.5999901891
ontime8	5102.5999901891
l2events	30583



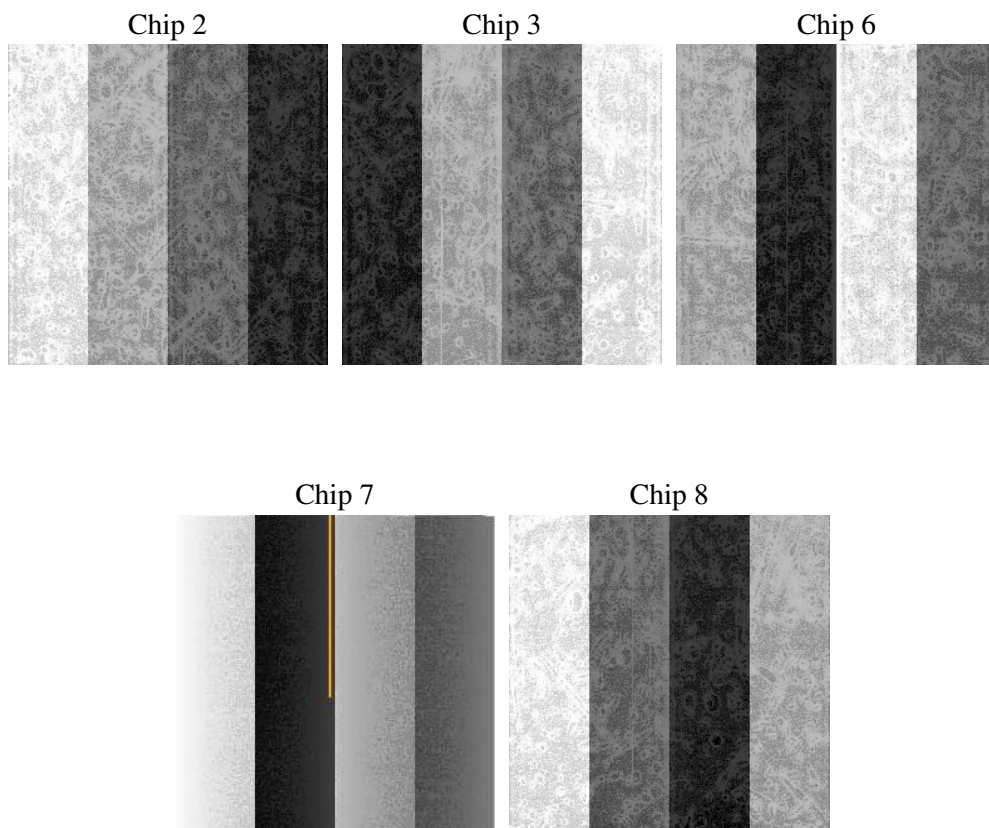
2 OBI

2.1 OBI

2.1.1 Images



2.1.2 Bias



2.1.3 Parameters

obi_num	0
ascdsver	7.6.9
caldbver	3.2.3
date	2006-10-04T09:40:35
revision	2

sched_exp_time	5000.000000
ontime	5107.2665312886
ontime2	5110.4075413942
ontime3	5107.2665013969
ontime6	5107.2665312886
ontime7	5107.2665312886
ontime8	5107.2665312886
l1events	185334

2.1.4 Events

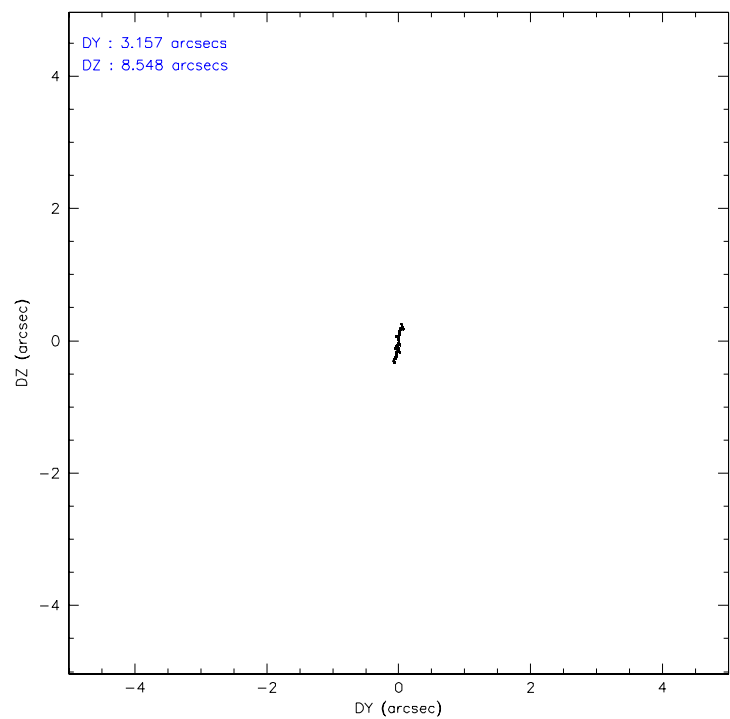
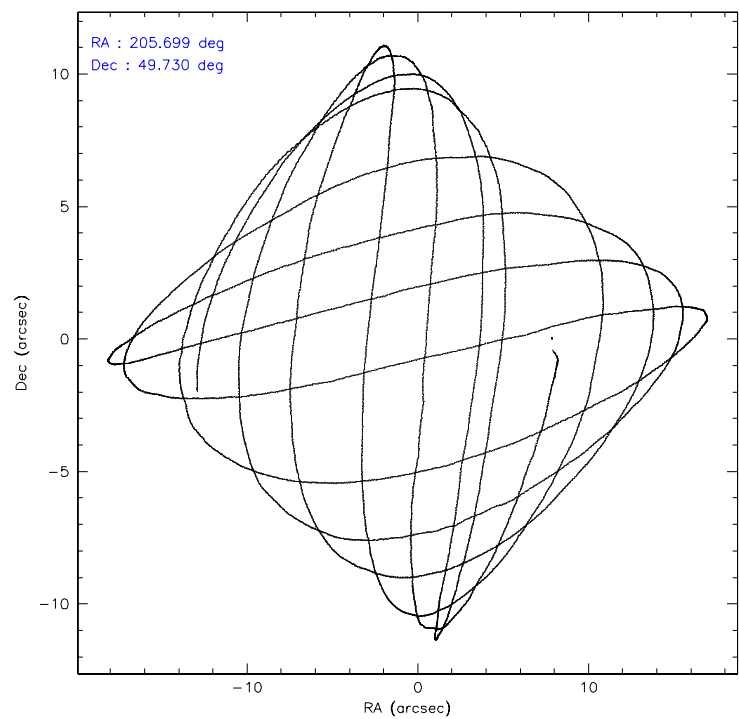
	ccd 2	ccd 3	ccd 6	ccd 7	ccd 8
level 1 events	33314	32731	33300	43984	42005
rejected events	29426	28889	29384	27010	33847
rejected %	88%	88%	88%	61%	80%

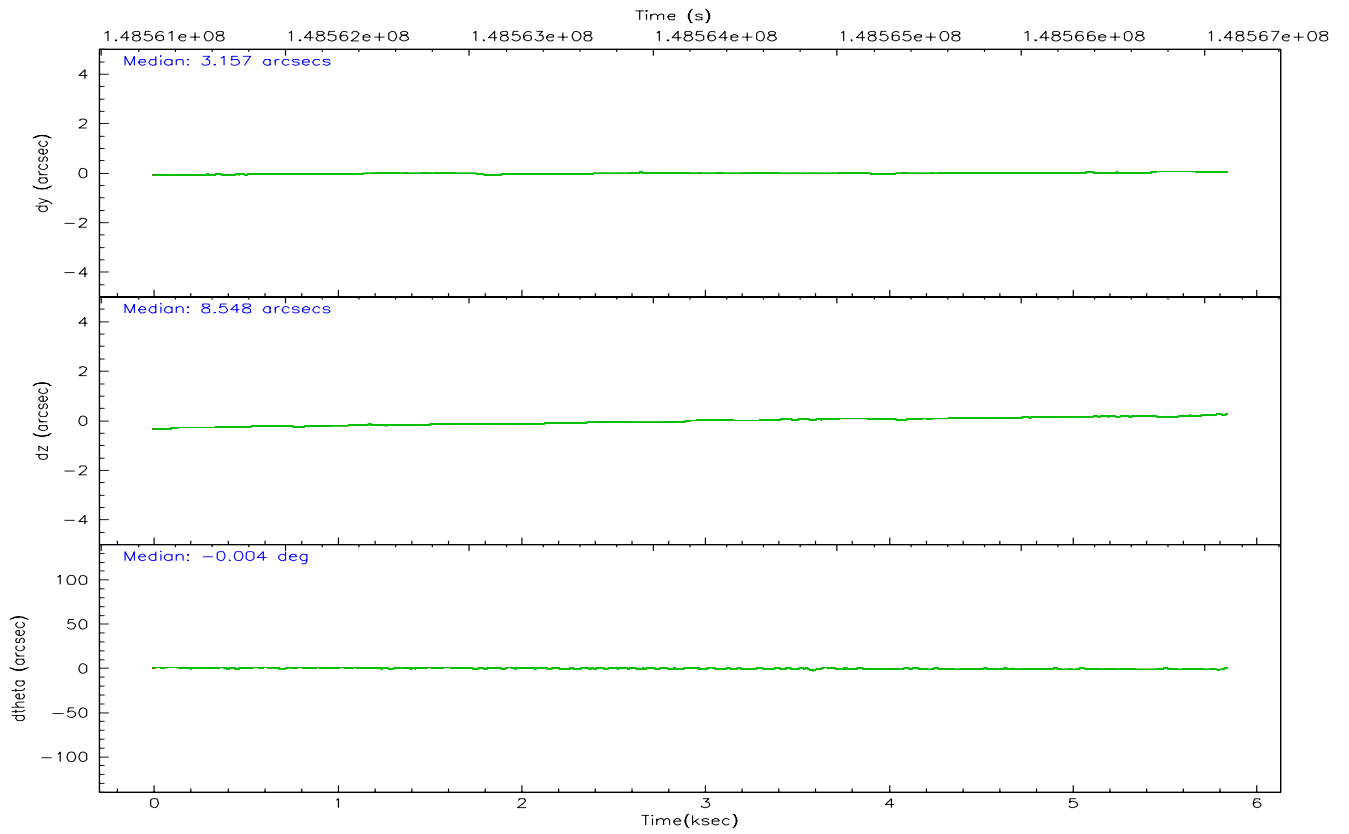
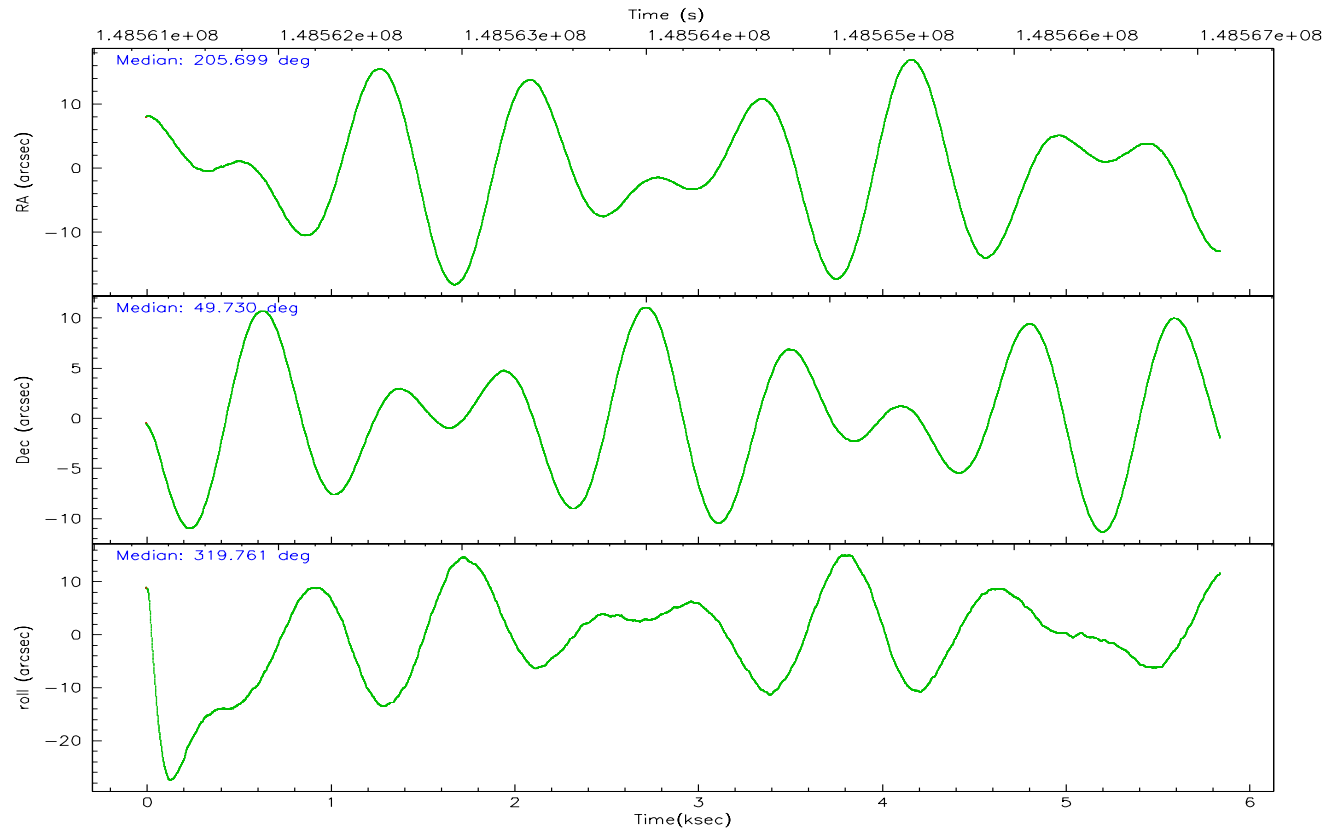
	ccd 2	ccd 3	ccd 6	ccd 7	ccd 8
grade 0 events	1716	1716	1601	1070	2630
	5%	5%	4%	2%	6%
grade 1 events	19	22	12	23	25
	0%	0%	0%	0%	0%
grade 2 events	727	705	803	4247	1652
	2%	2%	2%	9%	3%
grade 3 events	395	403	353	923	901
	1%	1%	1%	2%	2%
grade 4 events	393	386	380	879	878
	1%	1%	1%	1%	2%
grade 5 events	1233	1425	1591	2894	1893
	3%	4%	4%	6%	4%
grade 6 events	660	632	780	9869	2108
	1%	1%	2%	22%	5%
grade 7 events	28171	27442	27780	24079	31918
	84%	83%	83%	54%	75%

2.2 Compared Parameters

Parameter	Planned	Actual	Parameter	Planned	Actual
Instrument	ACIS	ACIS	Obspar format version number	6	6
Detector	ACIS-23678	ACIS-23678	Obspar file type	PREDICTED	ACTUAL
Grating	NONE	NONE	Obspar update status	NONE	UPDATED
Data mode	FAINT	FAINT	Number of optional ACIS chips dropped	0	0
Observation mode	POINTING	POINTING	On-chip summing requested	N	N
Pointing RA	205.658235	205.6998100019132	Subarray requested	NONE	NONE
Pointing Dec	49.734229	49.72973606883603	Alternating exposures requested	N	N
Pointing Roll	319.645997	319.7709687868069	Primary exposure time	0.000000	3.1
SIM focus pos (mm)	-0.684267	-0.6828225247311905			
SIM defocus (mm)	0	0.001444936568705701			
SIM translation stage pos (mm)	-190.132523	-190.1400660498719			
SIM translation stage offset (mm)	0	0.00754346686406393			
Observation start time	148562120.184000	148560833.75949			
Observation start date	2002-09-16T11:14:16	2002-09-16T10:53:53			
Observation end time	148567120.184000	148567787.35978			
Observation end date	2002-09-16T12:37:36	2002-09-16T12:49:47			
Read mode	TIMED	TIMED			

2.3 Aspect



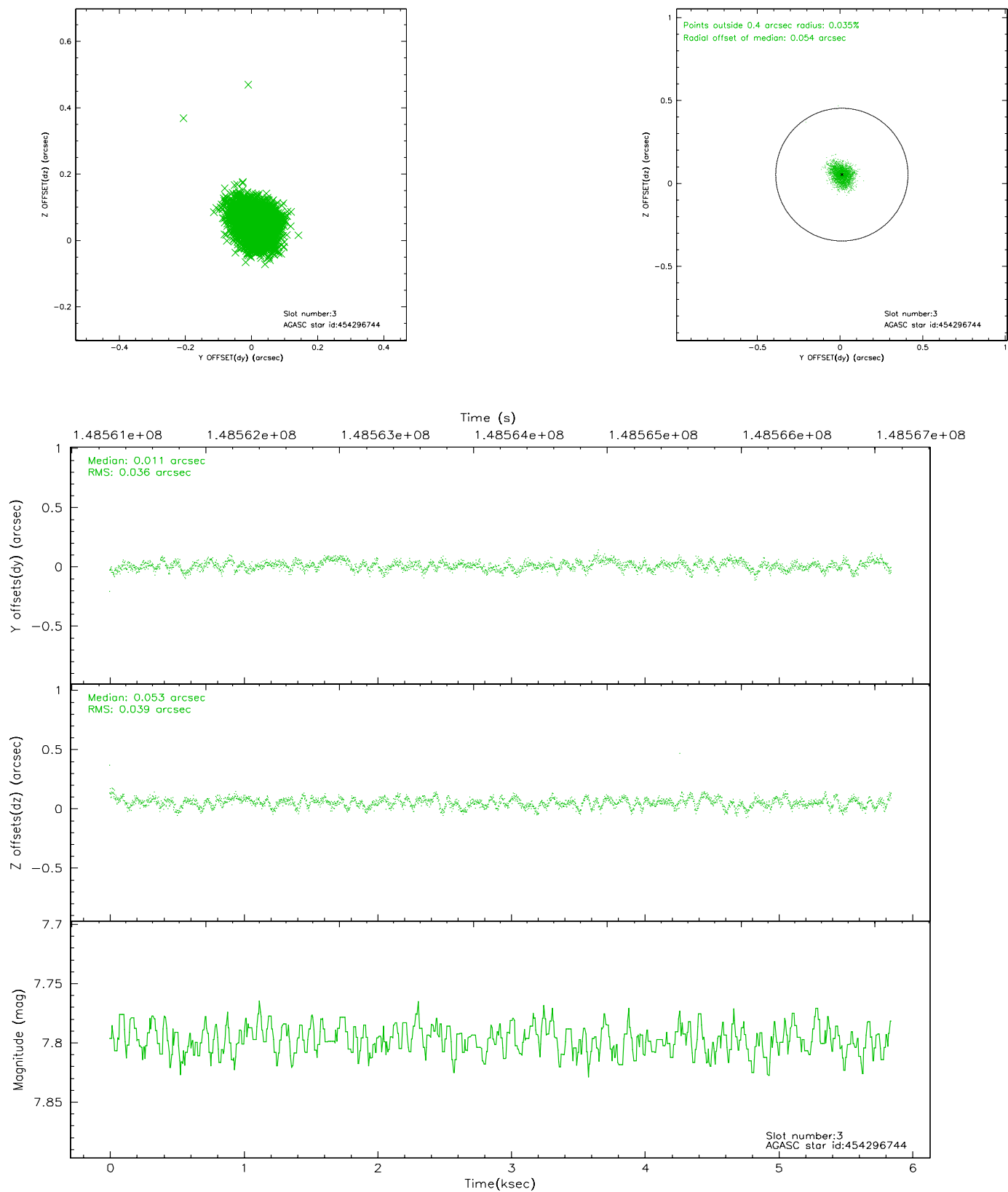


Slot Statistics

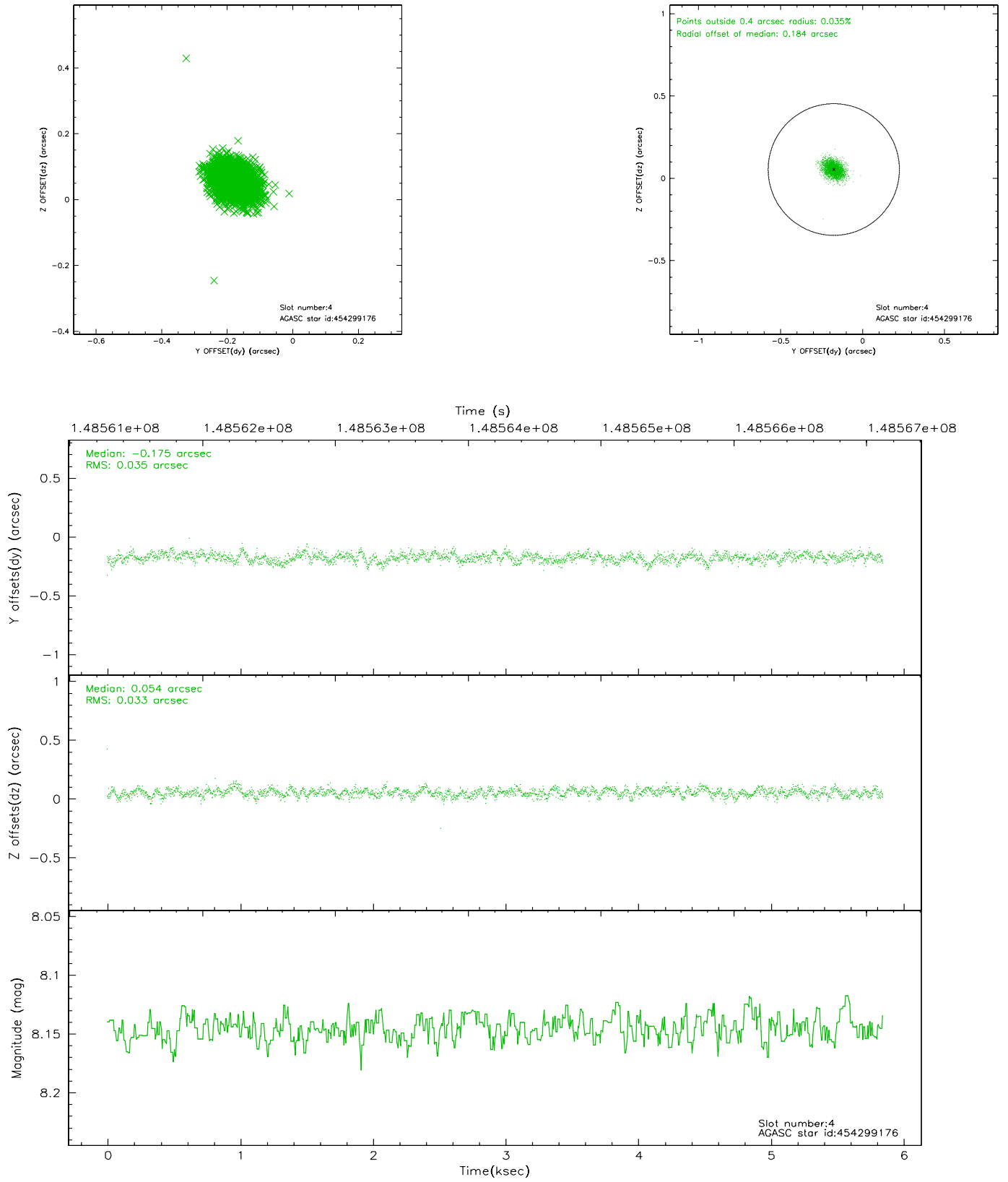
slot	status	id	mag	n_pts	med_dy	med_dz	dr1	dr2	ra	dec	mean_y	mean_z
0	FID	ACIS-S-2	7.11	1427	-0.003	0.014	0.007	0.011	0.000000	0.000000	-755.81	-1729.71
1	FID	ACIS-S-4	7.20	1427	-0.038	-0.002	0.005	0.011	0.000000	0.000000	2156.98	177.69
2	FID	ACIS-S-5	7.24	1427	0.011	-0.003	0.006	0.010	0.000000	0.000000	-1807.32	172.54
3	GUIDE	454296744	7.80	2853	0.011	0.053	0.057	0.090	205.803935	49.562276	661.18	-250.24
4	GUIDE	454299176	8.14	2853	-0.175	0.054	0.050	0.081	205.980064	49.134870	1975.29	-1151.13
5	GUIDE	454691504	8.90	2852	0.115	-0.005	0.070	0.119	205.975257	50.280822	-717.67	1973.19
6	GUIDE	454299480	9.28	2851	0.112	0.045	0.081	0.132	205.566956	49.578849	200.90	-562.57
7	GUIDE	454696696	9.43	2850	-0.066	-0.147	0.095	0.151	206.056542	50.275512	-564.12	2080.54

2.4 Star Slots

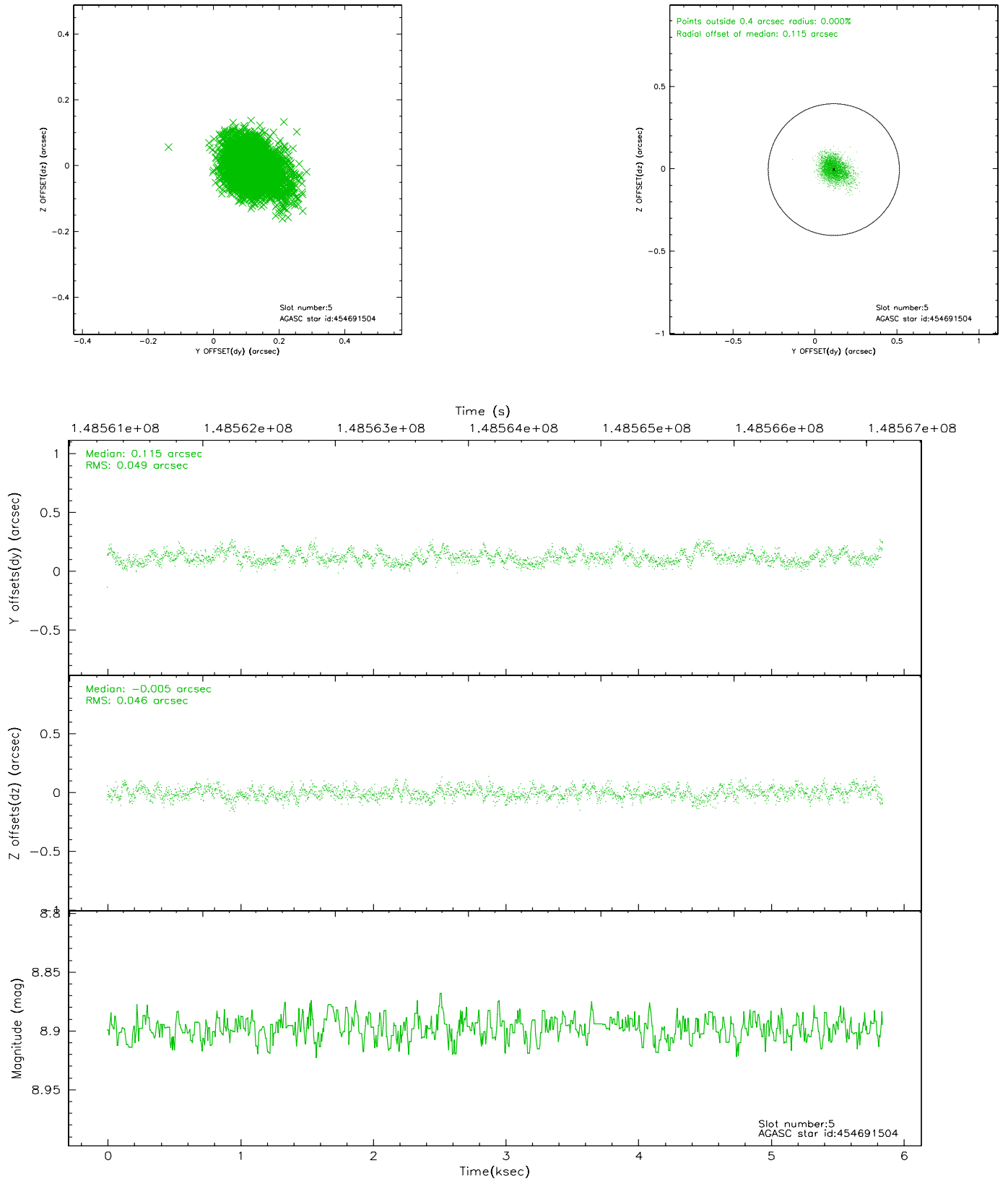
2.4.1 Slot 3



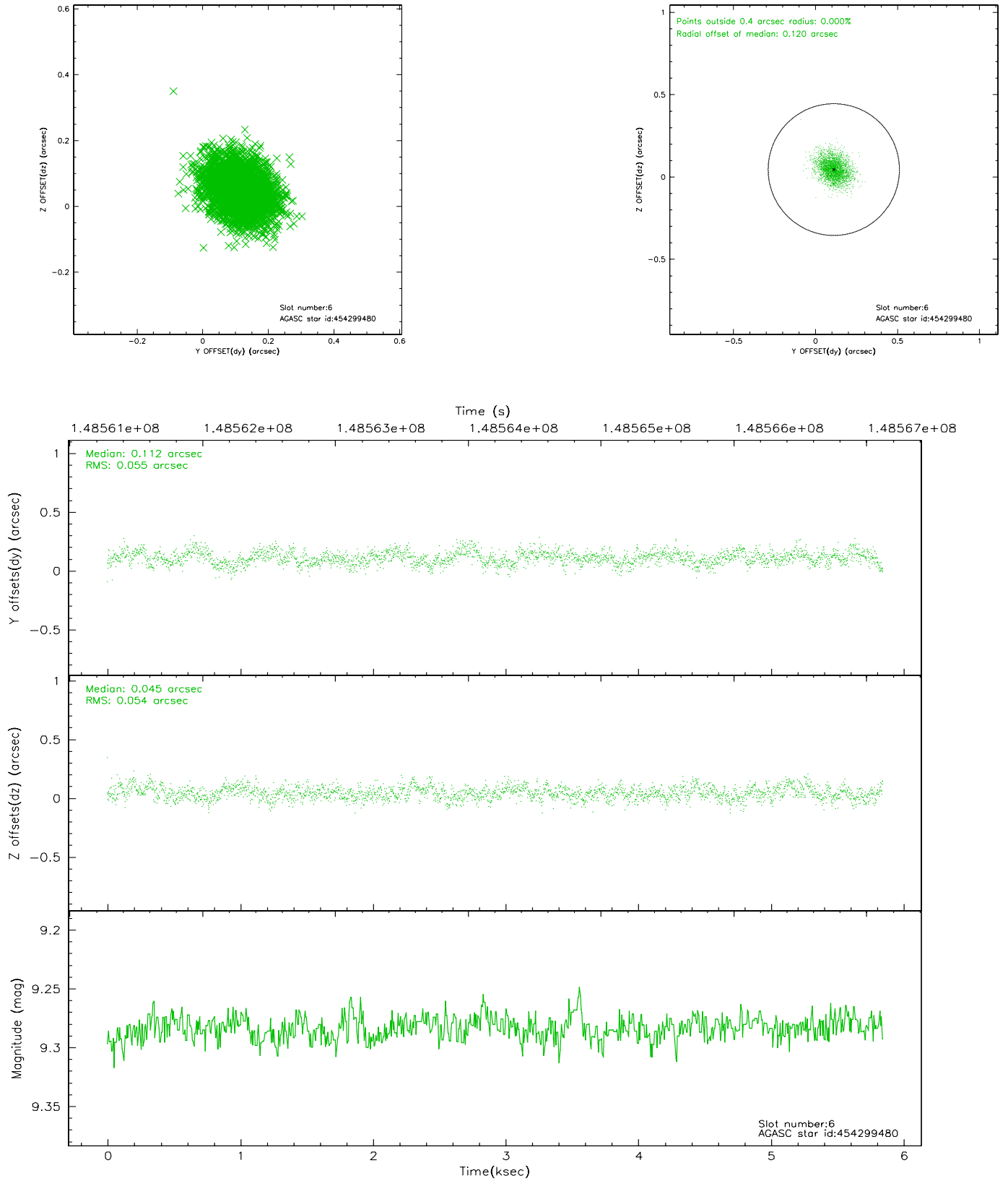
2.4.2 Slot 4



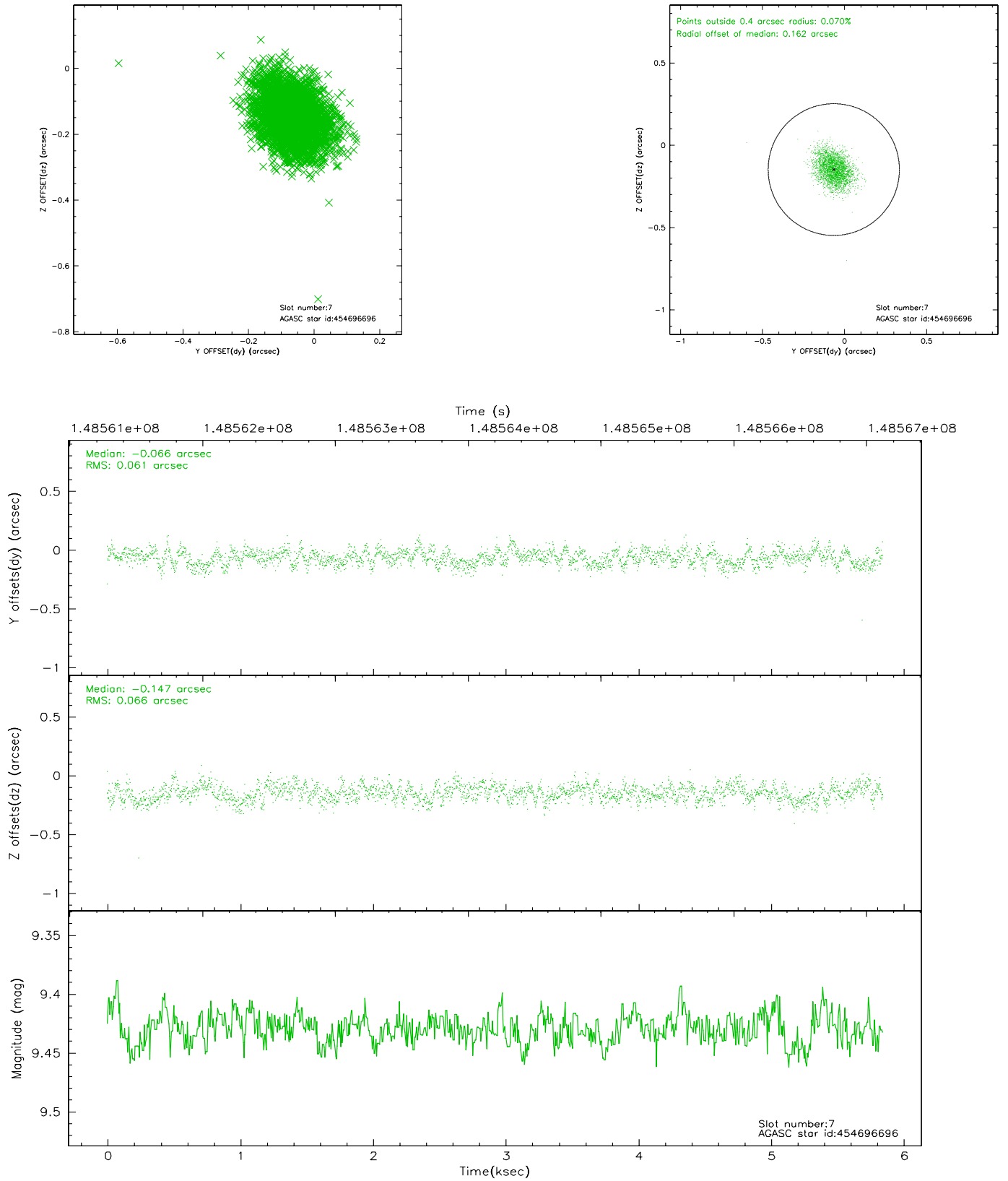
2.4.3 Slot 5



2.4.4 Slot 6

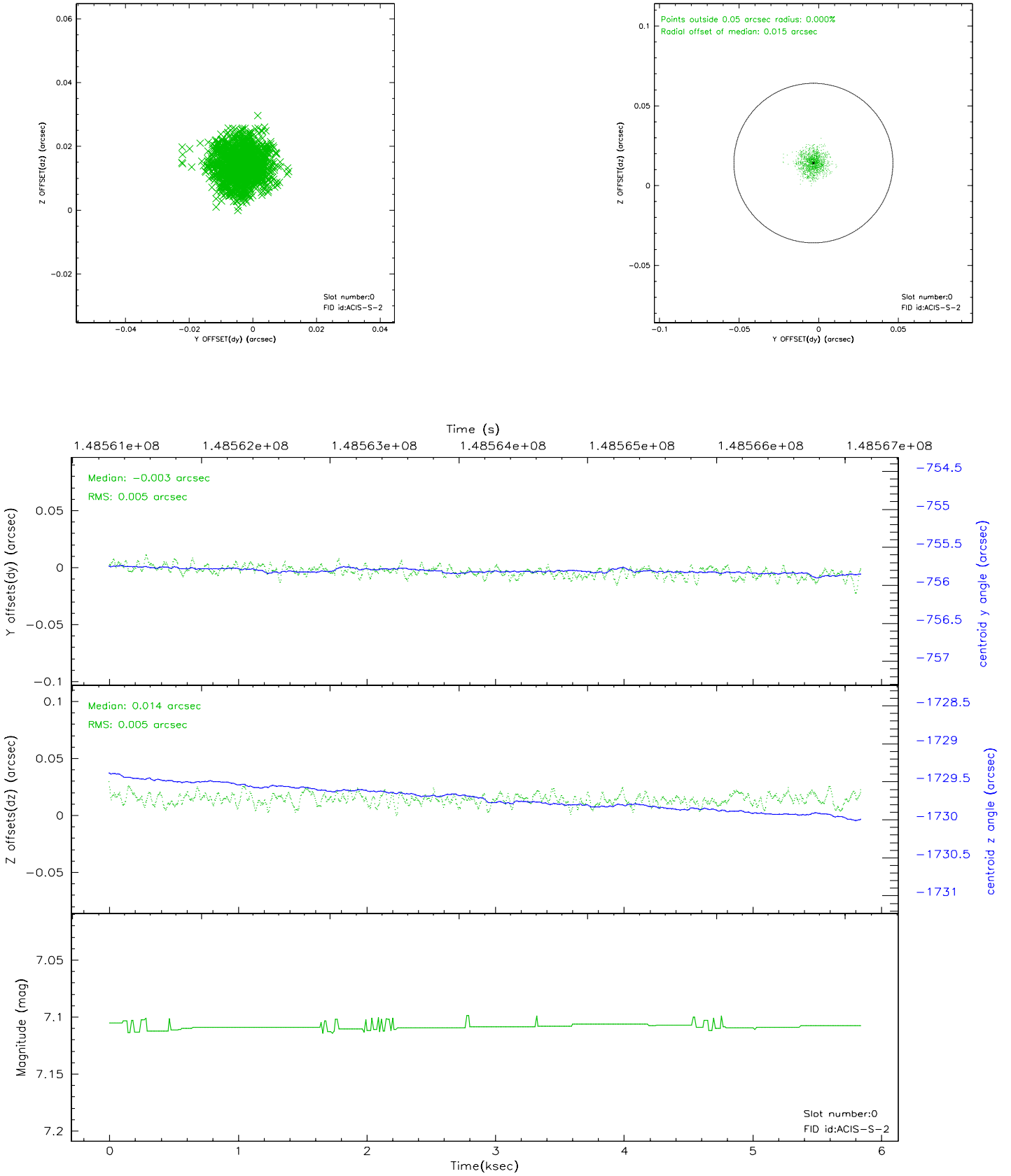


2.4.5 Slot 7

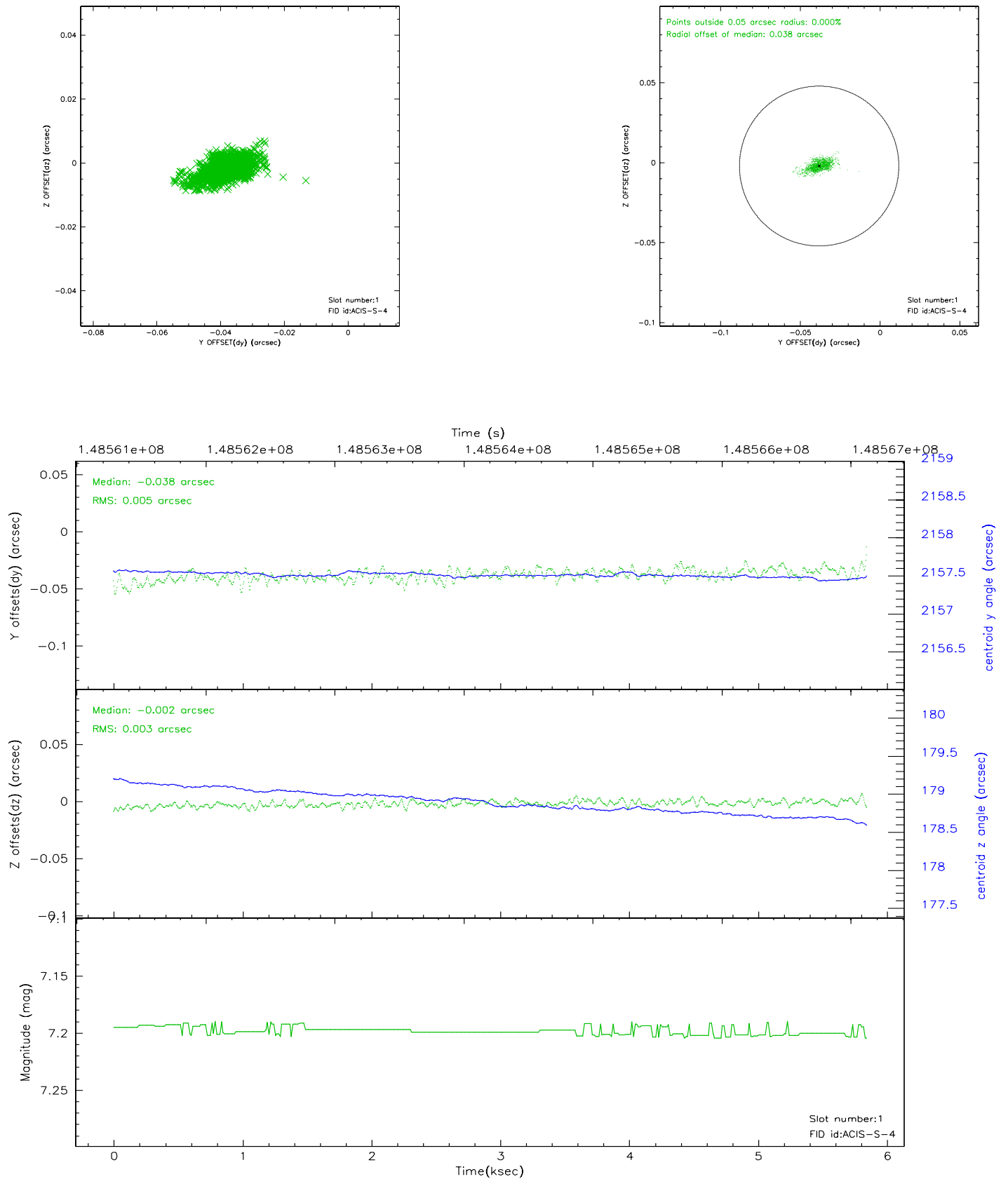


2.5 FID Slots

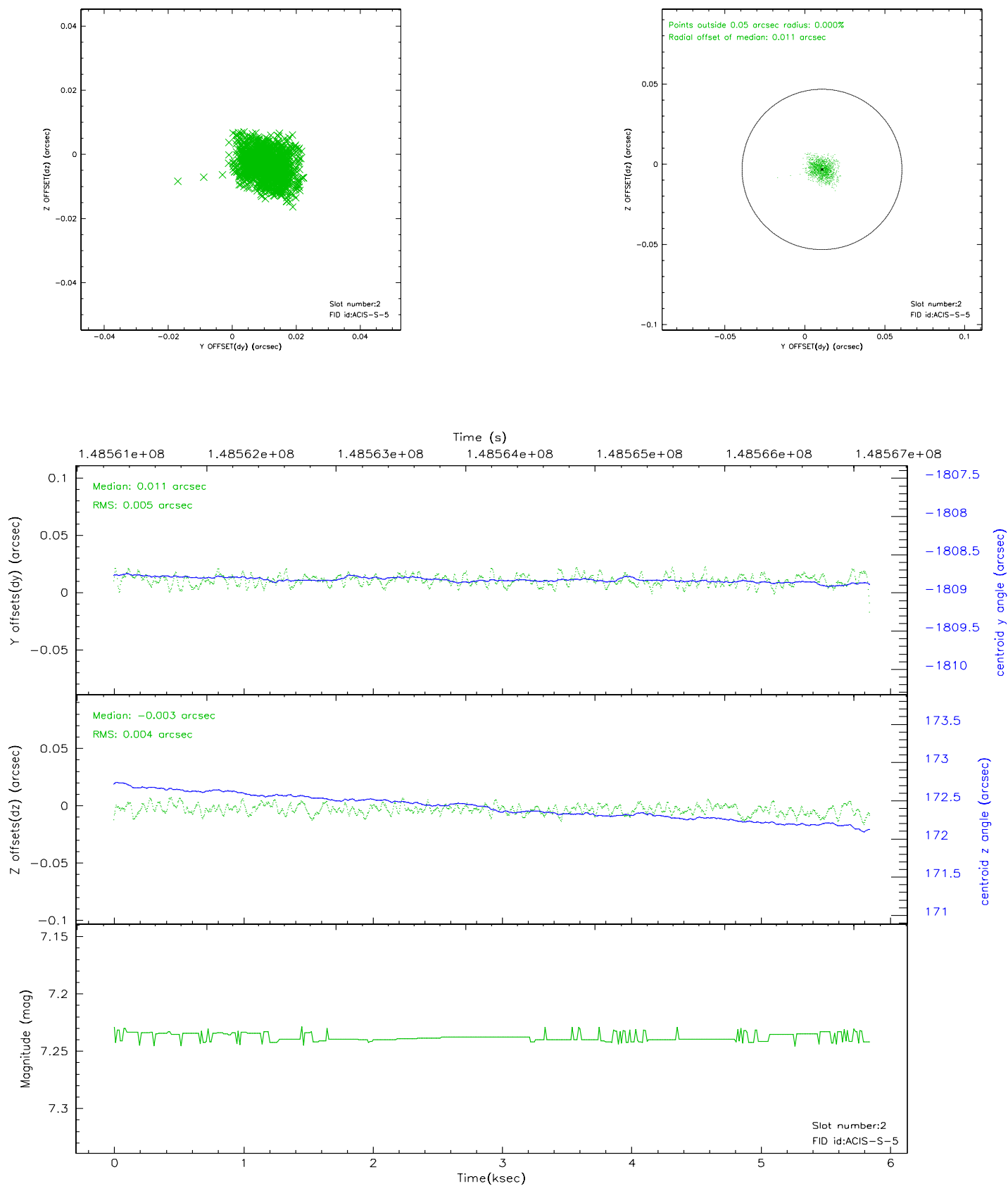
2.5.1 Slot 0



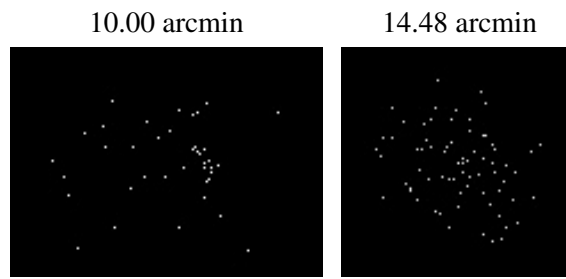
2.5.2 Slot 1



2.5.3 Slot 2



3 Point Sources



A Summary

A.1 Status

V&V Scientist	Jen Lauer
V&V Date (YYYY-MM-DD)	2006.10.04
V&V Edition	1
V&V Disposition and Status	OK
V&V Charge Time	5.102

A.2 Comments