

V&V Reference Report

L2 ASCDS Version : 7.6.9

Observation 2923 - L2 Version 001
Chandra X-Ray Center

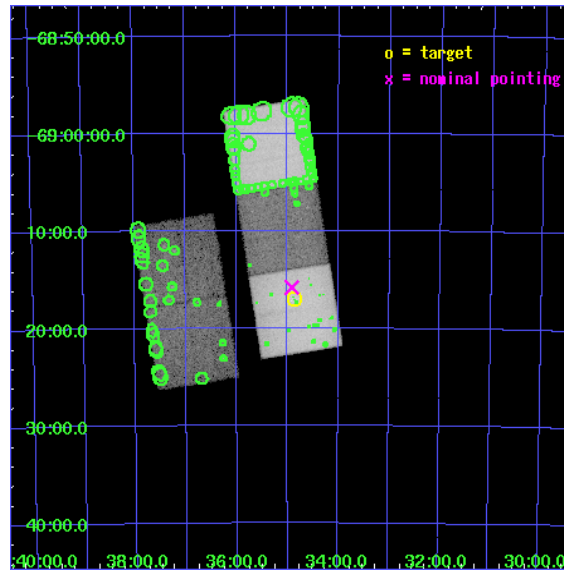
L2 Processing Date : Oct 11 2006

Contents

1	Front	2
2	OBI	3
2.1	OBI	3
2.1.1	Images	3
2.1.2	Bias	3
2.1.3	Parameters	4
2.1.4	Events	4
2.2	Compared Parameters	5
2.3	Aspect	6
2.4	Star Slots	9
2.4.1	Slot 3	9
2.4.2	Slot 4	10
2.4.3	Slot 5	11
2.4.4	Slot 6	12
2.4.5	Slot 7	13
2.5	FID Slots	14
2.5.1	Slot 0	14
2.5.2	Slot 1	15
2.5.3	Slot 2	16
3	Point Sources	17
A	Summary	18
A.1	Status	18
A.2	Comments	18

1 Front

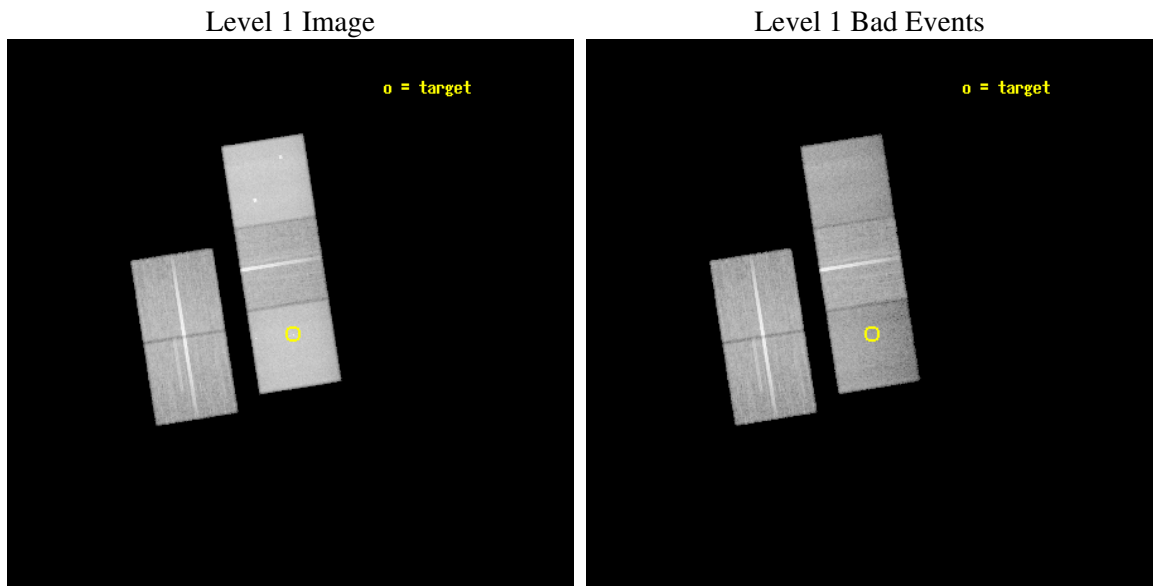
seq_num	600260
obs_id	2923
title	THE DYNAMICS OF THE HOT ISM IN EARLY-TYPE GALAXIES
observer	Dr. Laurence David
object	NGC2434
dtcycle	0
cycle	P
ra_targ	113.714167
dec_targ	-69.283611
ra_nom	113.72816100136
dec_nom	-69.263438474889
roll_nom	81.018260636884
revision	2
ontime	47305.958938807
livetime	46687.871759131
ontime2	47299.677008361
ontime3	47299.677018315
ontime5	47302.817928702
ontime6	47302.817978591
ontime7	47305.958938807
l2events	561076



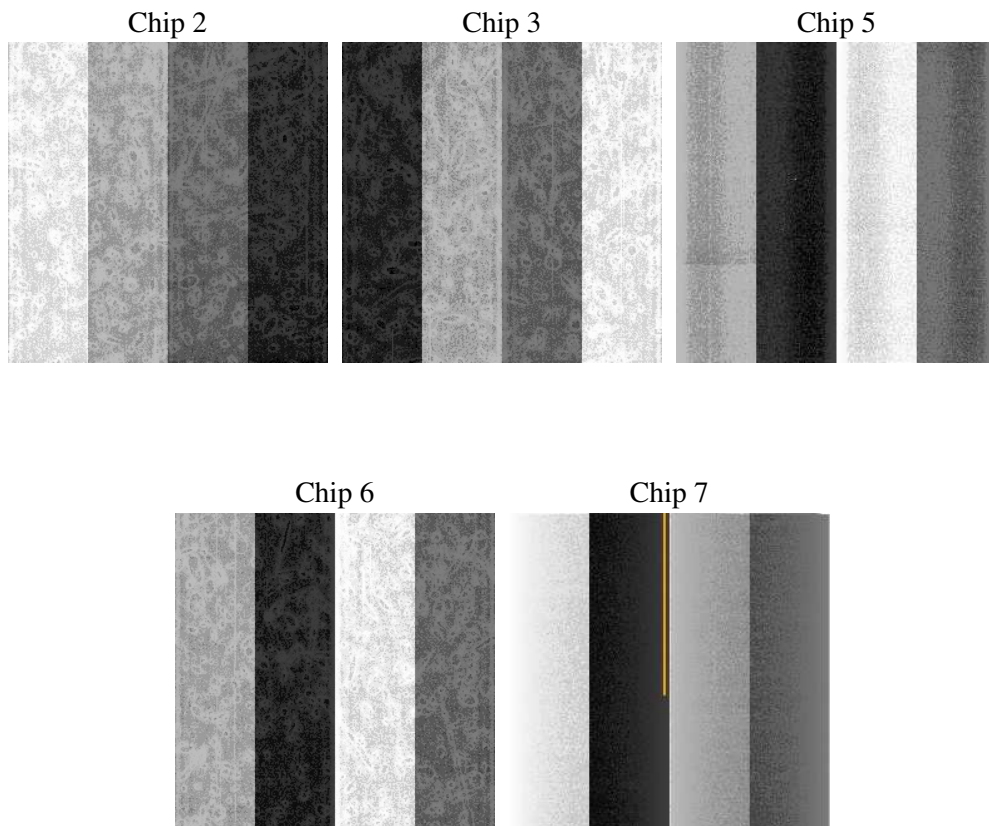
2 OBI

2.1 OBI

2.1.1 Images



2.1.2 Bias



2.1.3 Parameters

obi_num	0
ascdsver	7.6.9
caldbver	3.2.3
date	2006-10-11T22:37:03
revision	2

sched_exp_time	47148.174000
ontime	47868.861328602
ontime2	47862.579398155
ontime3	47862.579408109
ontime5	47865.720318496
ontime6	47865.720368385
ontime7	47868.861328602
l1events	1514518

2.1.4 Events

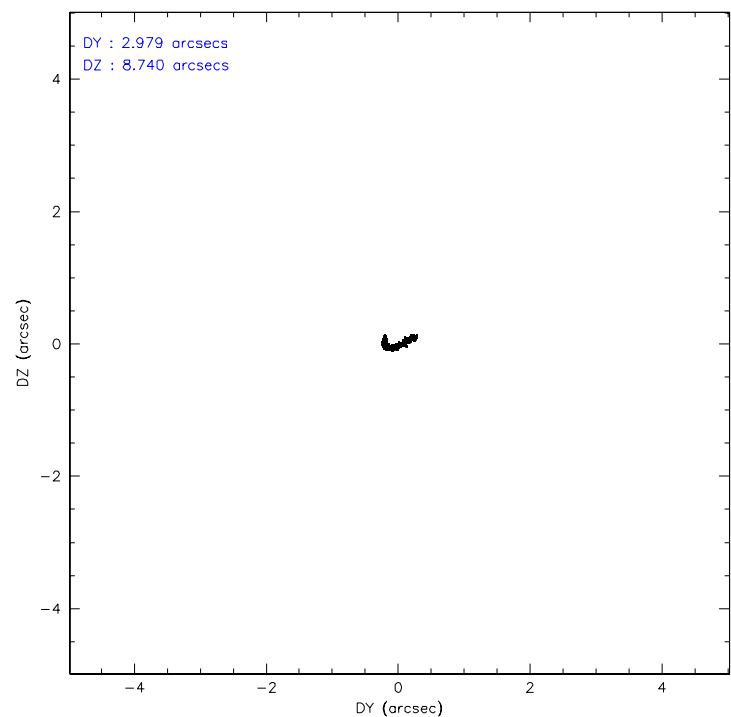
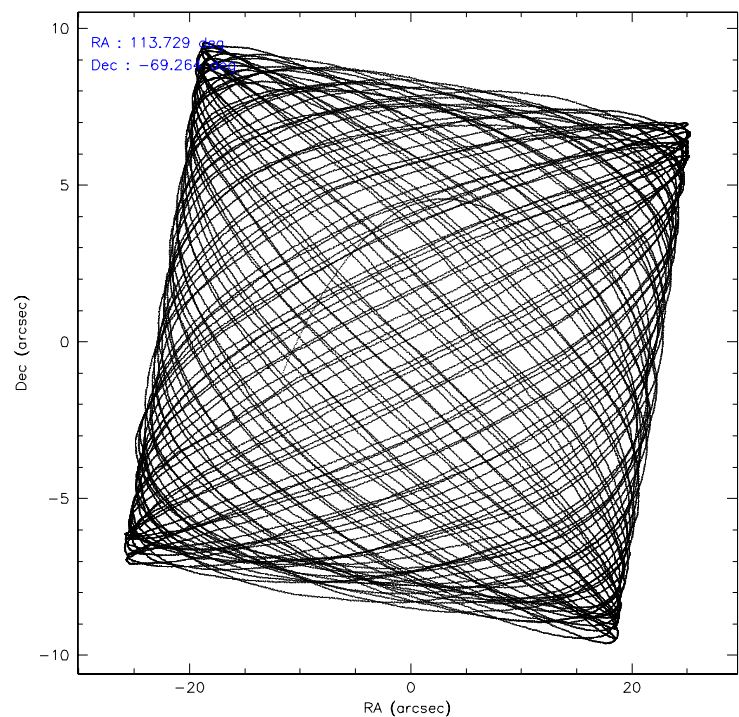
	ccd 2	ccd 3	ccd 5	ccd 6	ccd 7
level 1 events	250058	239148	410268	251921	363123
rejected events	220526	210860	158512	210716	132304
rejected %	88%	88%	38%	83%	36%

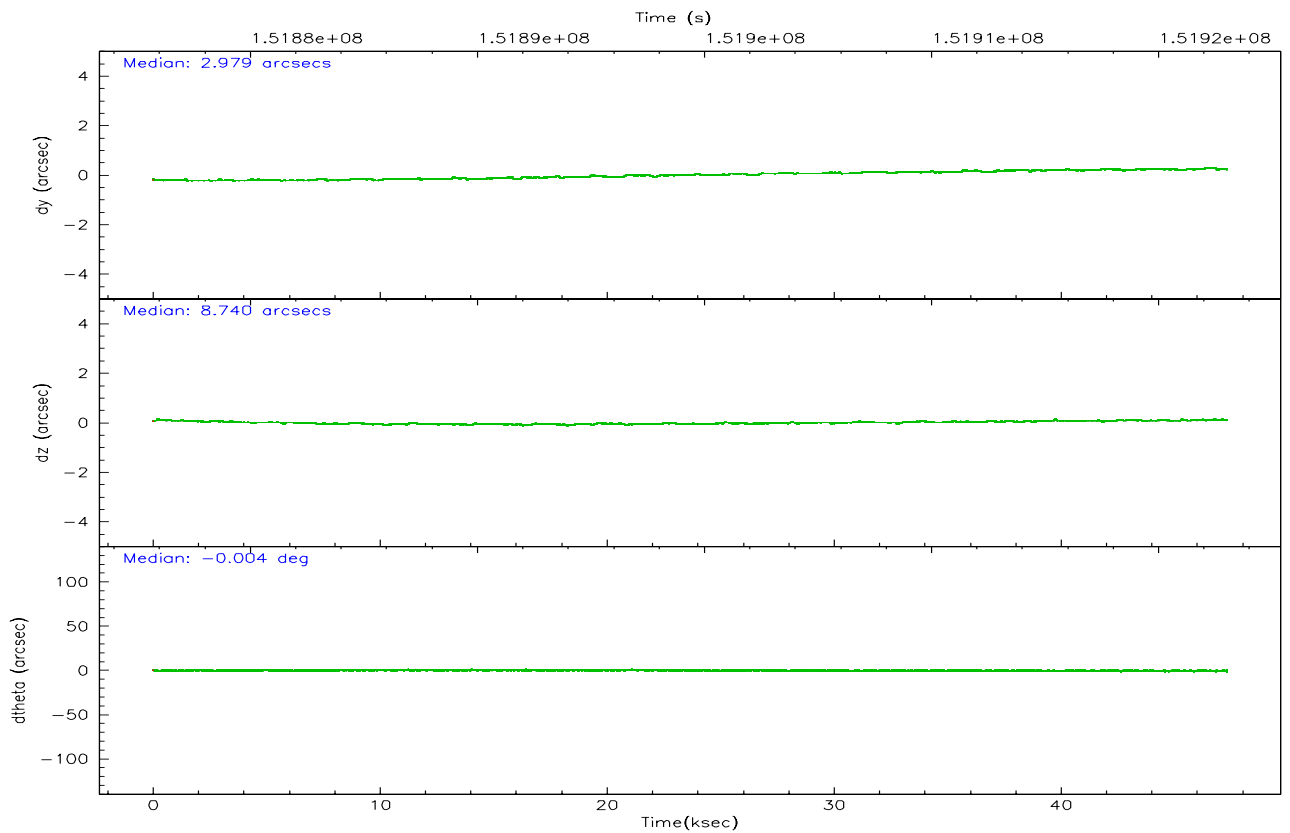
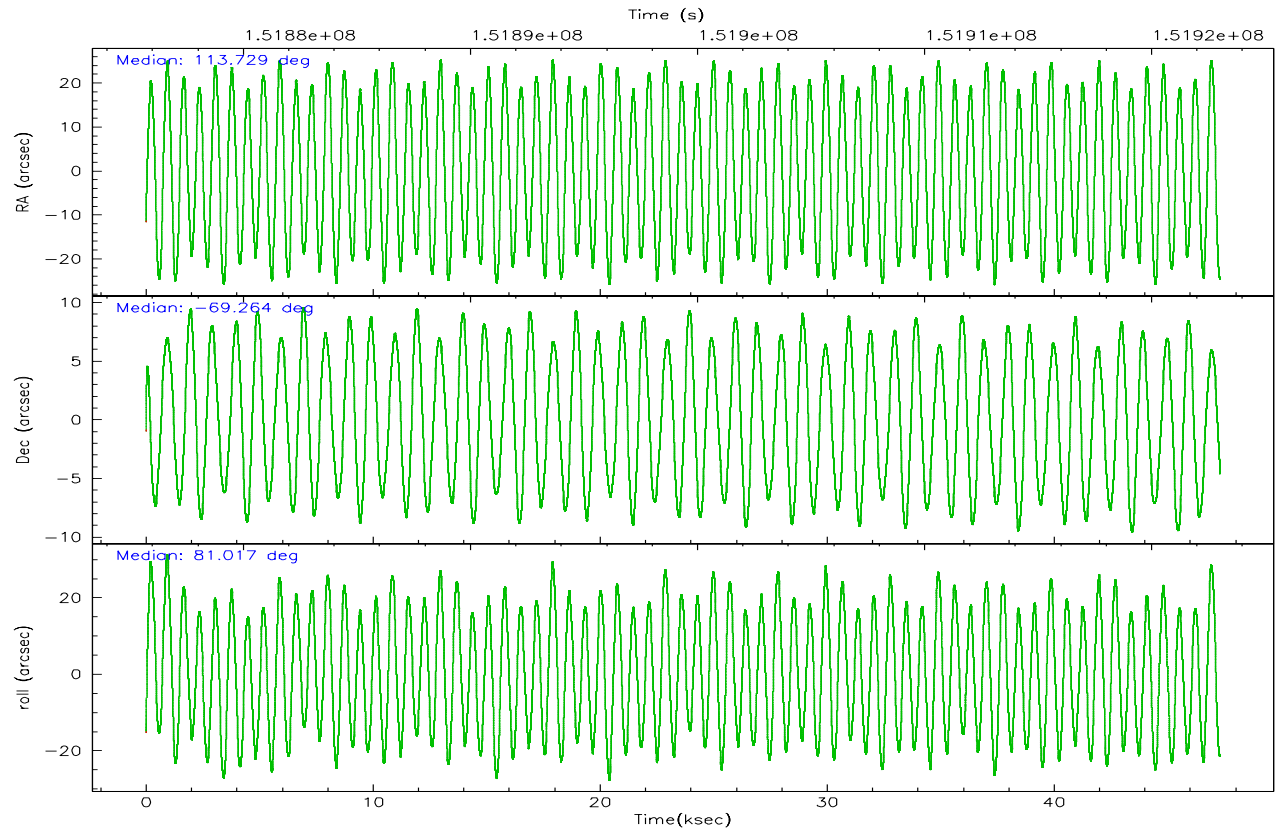
	ccd 2	ccd 3	ccd 5	ccd 6	ccd 7
grade 0 events	14653	14240	20355	24193	18989
	5%	5%	4%	9%	5%
grade 1 events	137	127	135	164	133
	0%	0%	0%	0%	0%
grade 2 events	5626	4948	82377	6463	51290
	2%	2%	20%	2%	14%
grade 3 events	2672	2714	7963	3066	14023
	1%	1%	1%	1%	3%
grade 4 events	2733	2636	7720	2972	13829
	1%	1%	1%	1%	3%
grade 5 events	6441	7527	17305	7960	19073
	2%	3%	4%	3%	5%
grade 6 events	4117	4004	134957	4810	133848
	1%	1%	32%	1%	36%
grade 7 events	213679	202952	139456	202293	111938
	85%	84%	33%	80%	30%

2.2 Compared Parameters

Parameter	Planned	Actual	Parameter	Planned	Actual
Instrument	ACIS	ACIS	Obspar format version number	6	6
Detector	ACIS-23567	ACIS-23567	Obspar file type	PREDICTED	ACTUAL
Grating	NONE	NONE	Obspar update status	NONE	UPDATED
Data mode	VFAINT	VFAINT	Number of optional ACIS chips dropped	0	0
Observation mode	POINTING	POINTING	On-chip summing requested	N	N
Pointing RA	113.756704	113.7281610013646	Subarray requested	NONE	NONE
Pointing Dec	-69.288727	-69.26343847488941	Alternating exposures requested	N	N
Pointing Roll	80.888337	81.01826063688368	Primary exposure time	0.000000	3.1
SIM focus pos (mm)	-0.684267	-0.6828225247311905			
SIM defocus (mm)	0	0.001444936568705701			
SIM translation stage pos (mm)	-190.132523	-190.1400660498719			
SIM translation stage offset (mm)	0	0.00754346686406393			
Observation start time	151875876.184000	151874610.20929			
Observation start date	2002-10-24T19:43:32	2002-10-24T19:23:30			
Observation end time	151923024.184000	151923339.22382			
Observation end date	2002-10-25T08:49:20	2002-10-25T08:55:39			
Read mode	TIMED	TIMED			

2.3 Aspect



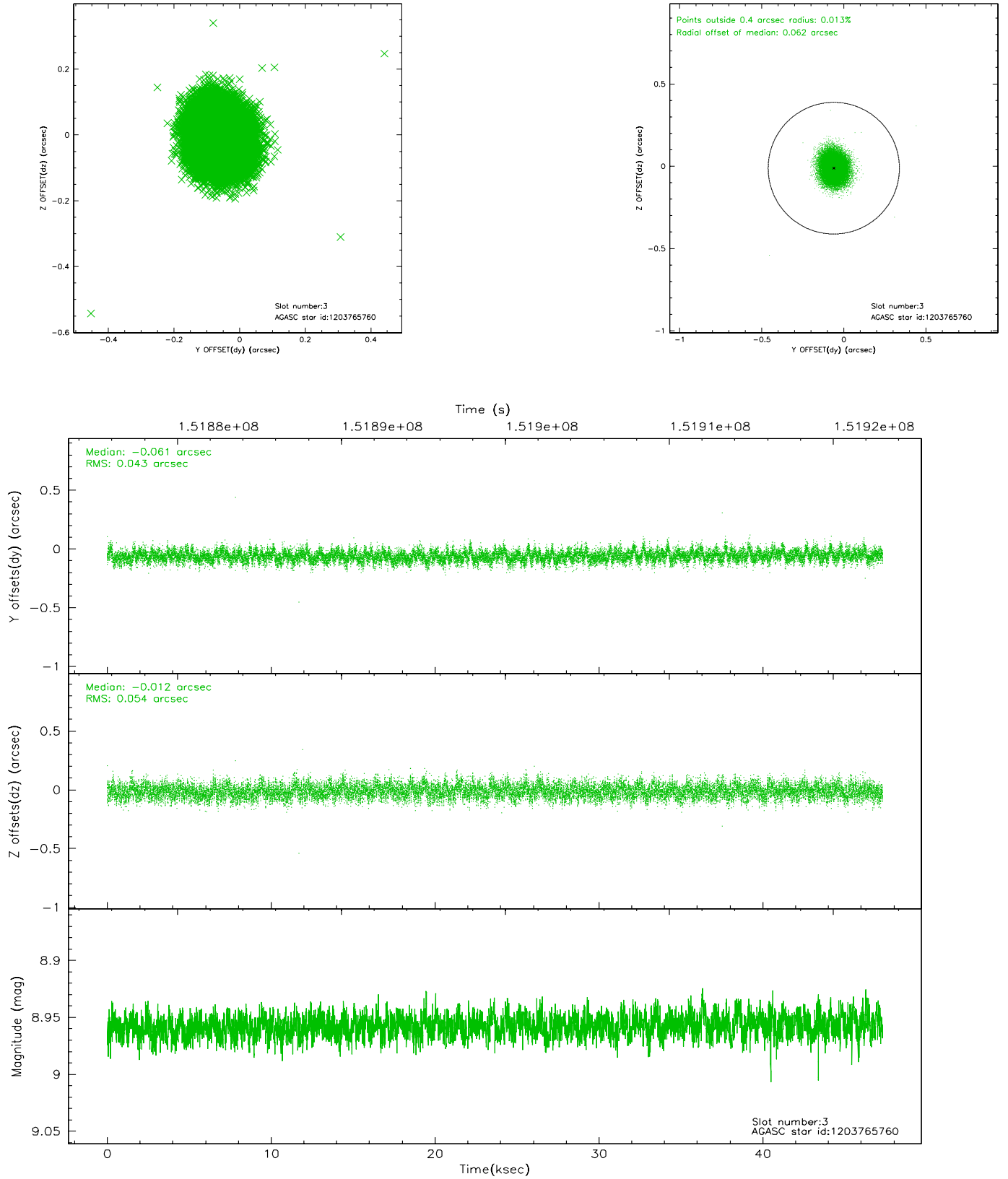


Slot Statistics

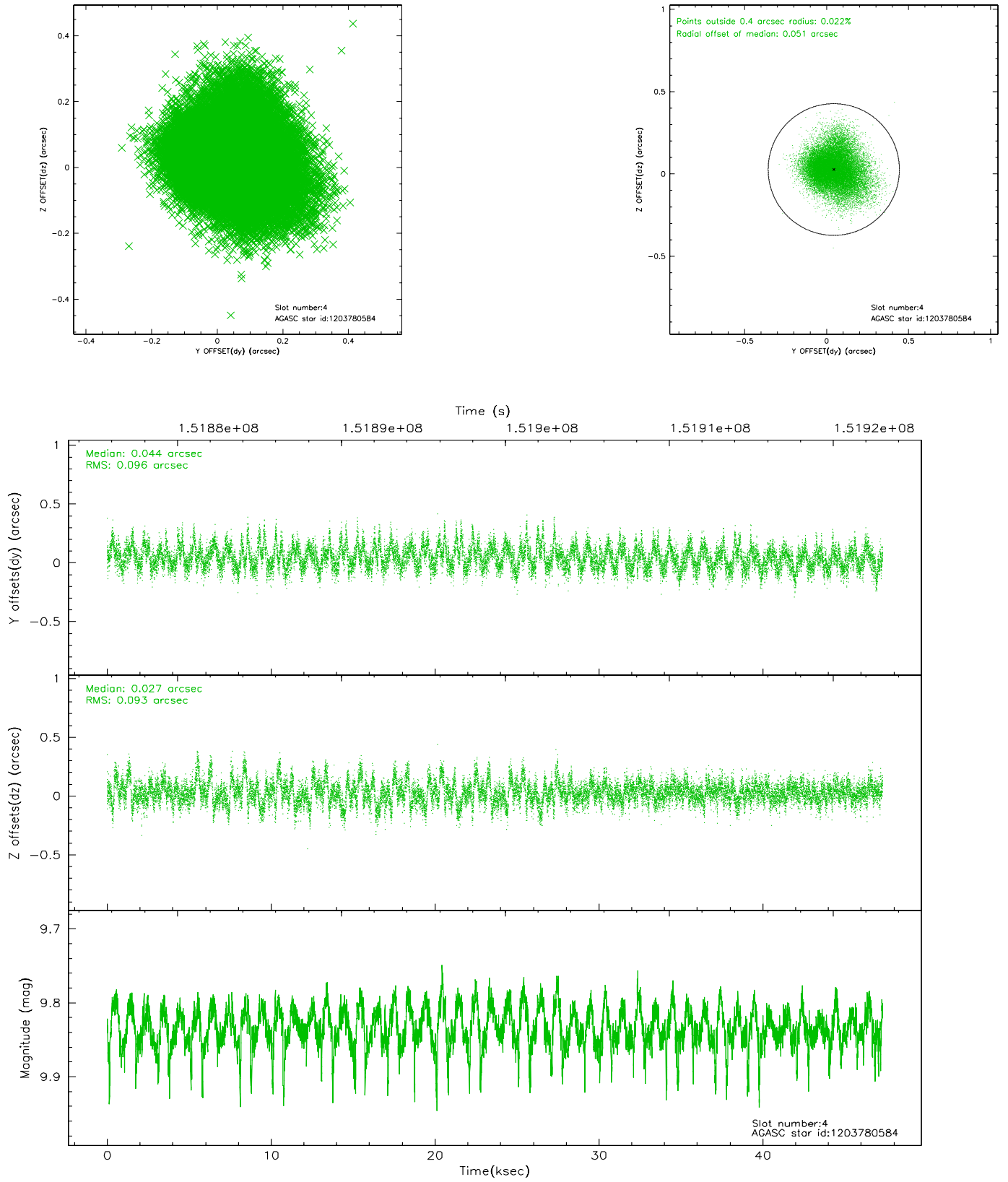
slot	status	id	mag	n_pts	med_dy	med_dz	dr1	dr2	ra	dec	mean_y	mean_z
0	FID	ACIS-S-2	7.11	11538	-0.009	0.013	0.008	0.013	0.000000	0.000000	-755.63	-1729.95
1	FID	ACIS-S-4	7.20	11536	-0.042	0.001	0.012	0.020	0.000000	0.000000	2157.62	178.53
2	FID	ACIS-S-5	7.24	11539	0.019	-0.005	0.011	0.018	0.000000	0.000000	-1808.46	172.19
3	GUIDE	1203765760	8.96	23067	-0.061	-0.012	0.074	0.118	114.370143	-69.600134	-988.48	-937.58
4	GUIDE	1203780584	9.83	23026	0.044	0.027	0.142	0.233	114.799734	-69.946918	-2146.16	-1647.67
5	GUIDE	1203123152	8.46	23070	0.078	0.068	0.070	0.111	112.228785	-68.580781	2174.10	2383.69
6	GUIDE	1203111024	9.82	22948	-0.087	-0.022	0.148	0.248	113.764307	-68.627153	2353.55	368.13
7	GUIDE	1203770160	9.22	23061	0.033	-0.063	0.078	0.131	115.049912	-69.466651	-390.32	-1715.80

2.4 Star Slots

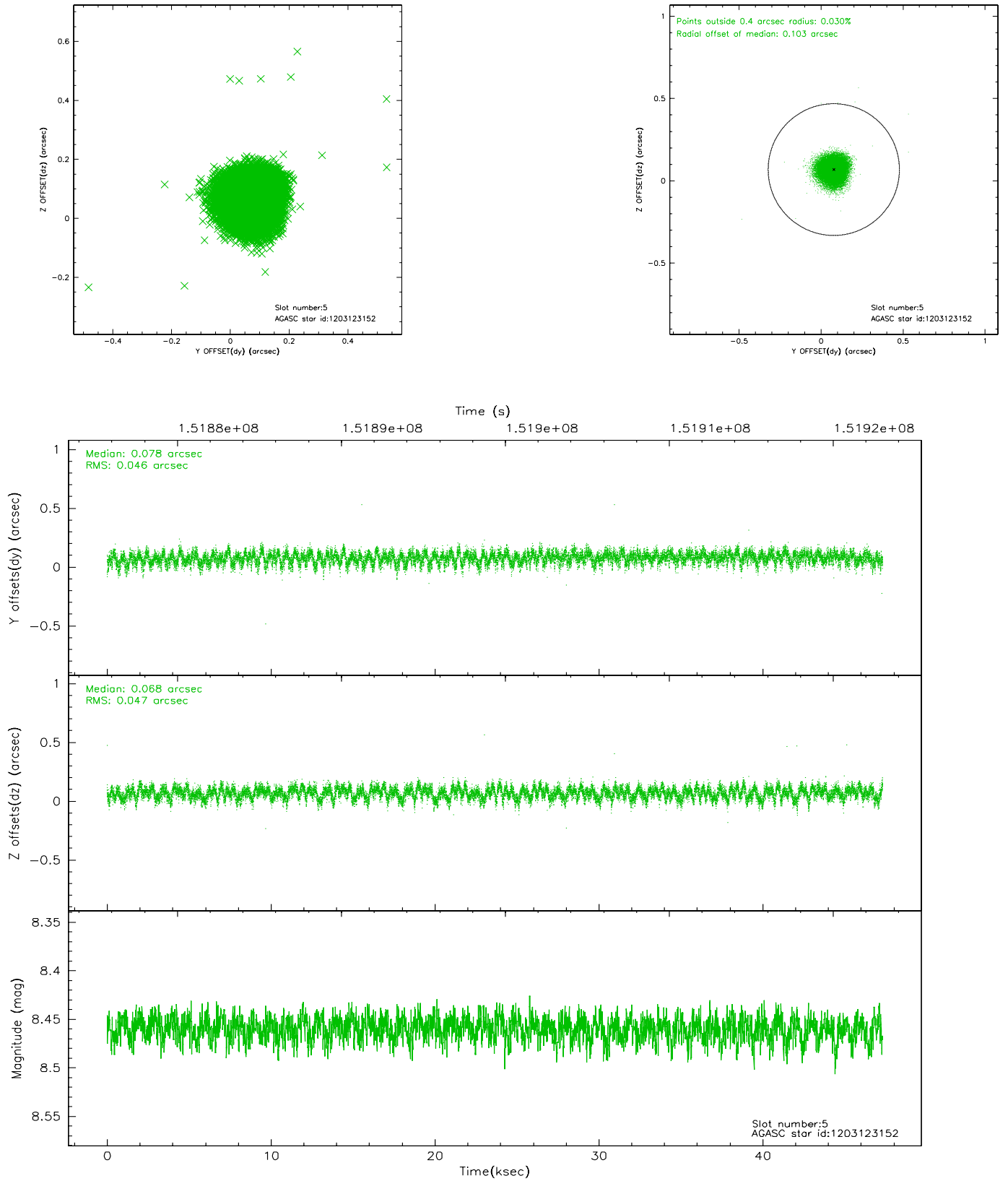
2.4.1 Slot 3



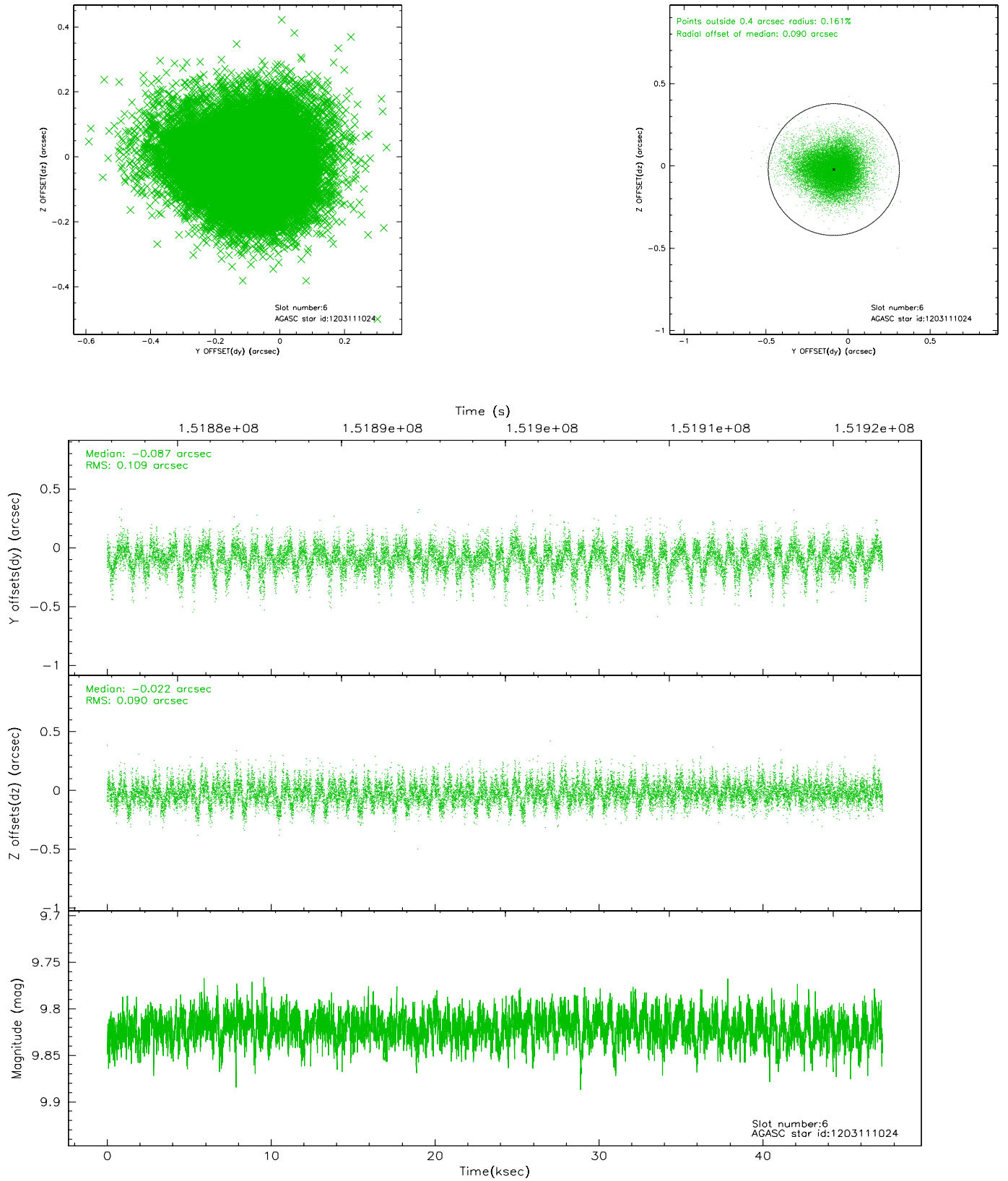
2.4.2 Slot 4



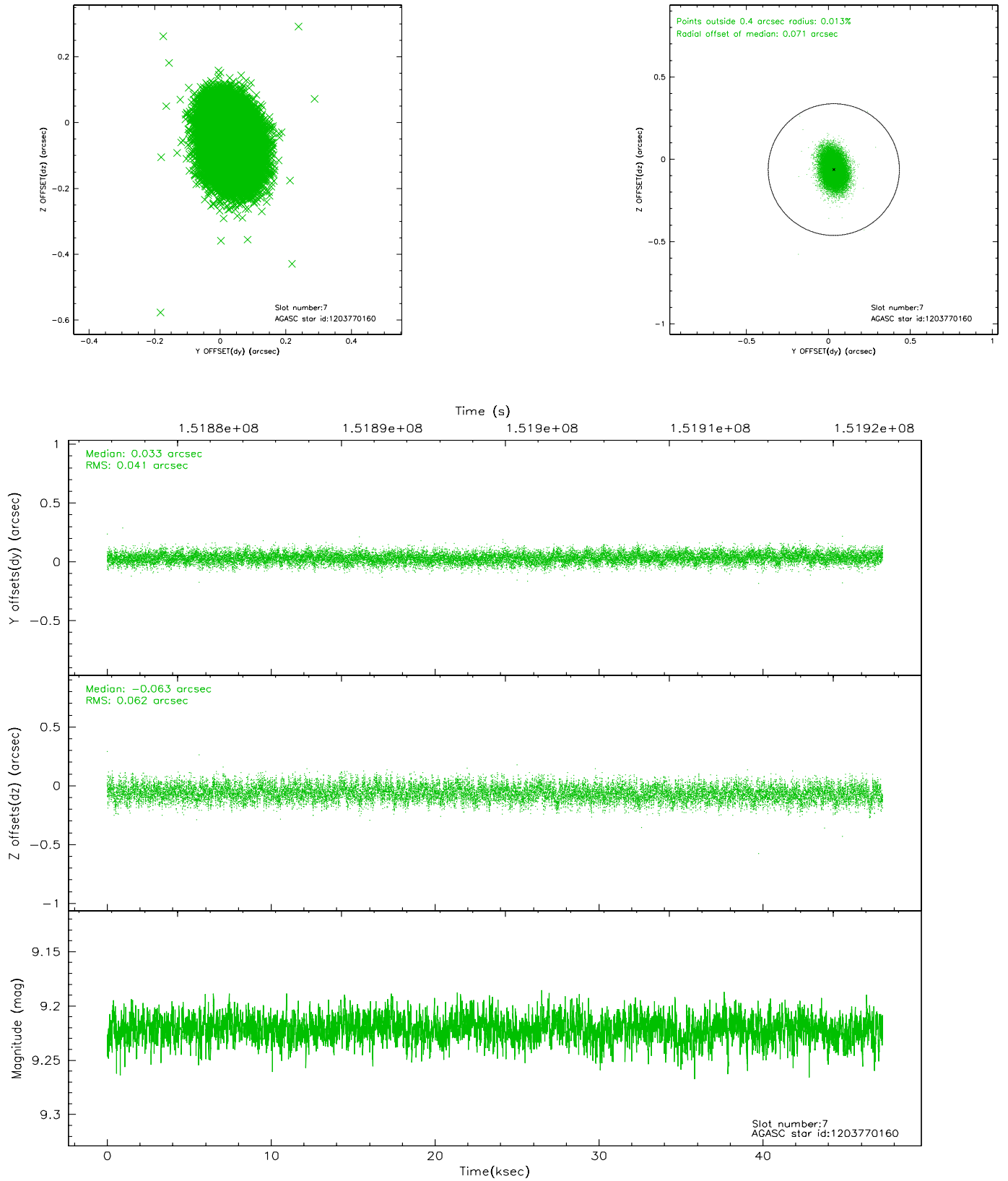
2.4.3 Slot 5



2.4.4 Slot 6

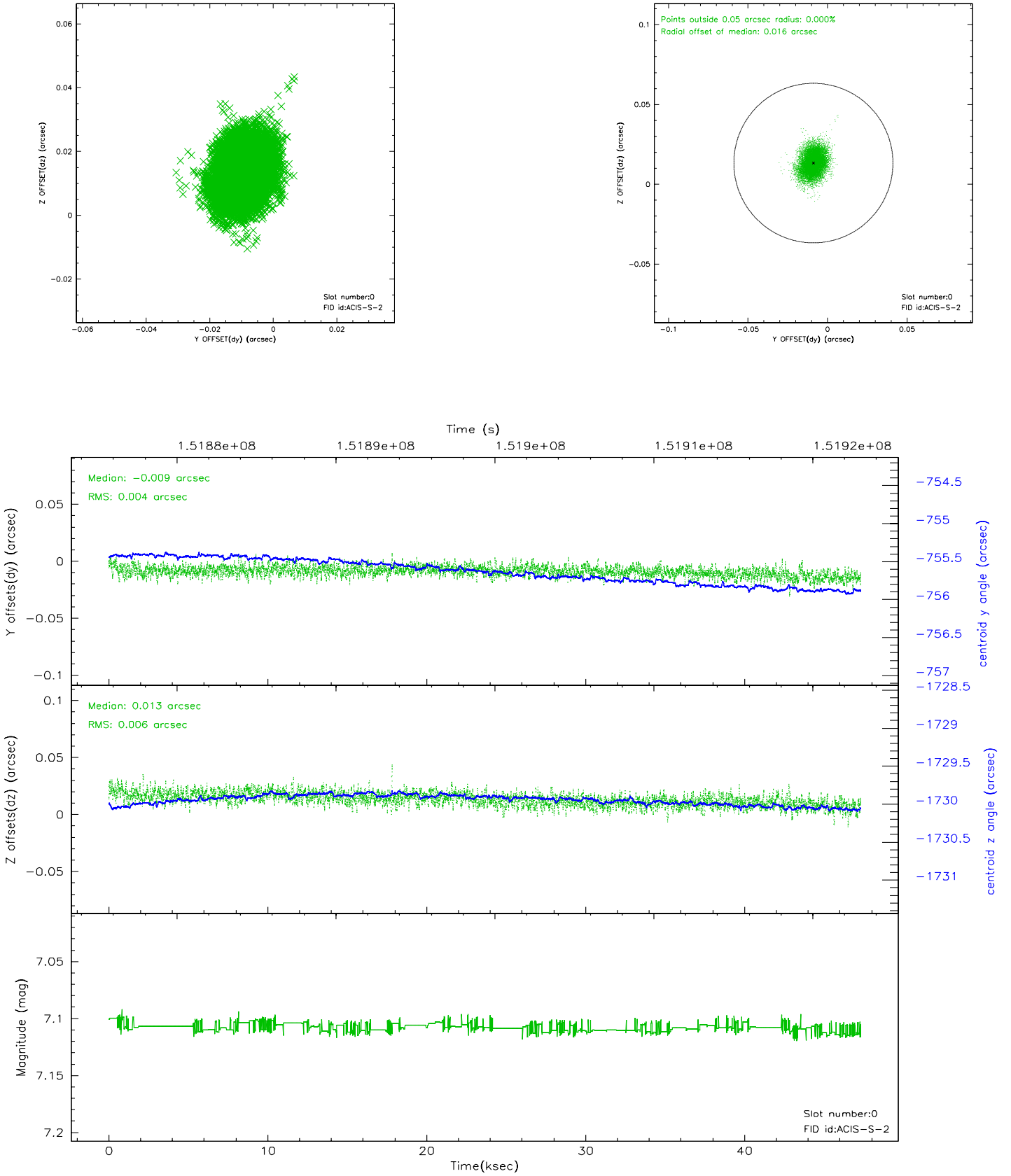


2.4.5 Slot 7

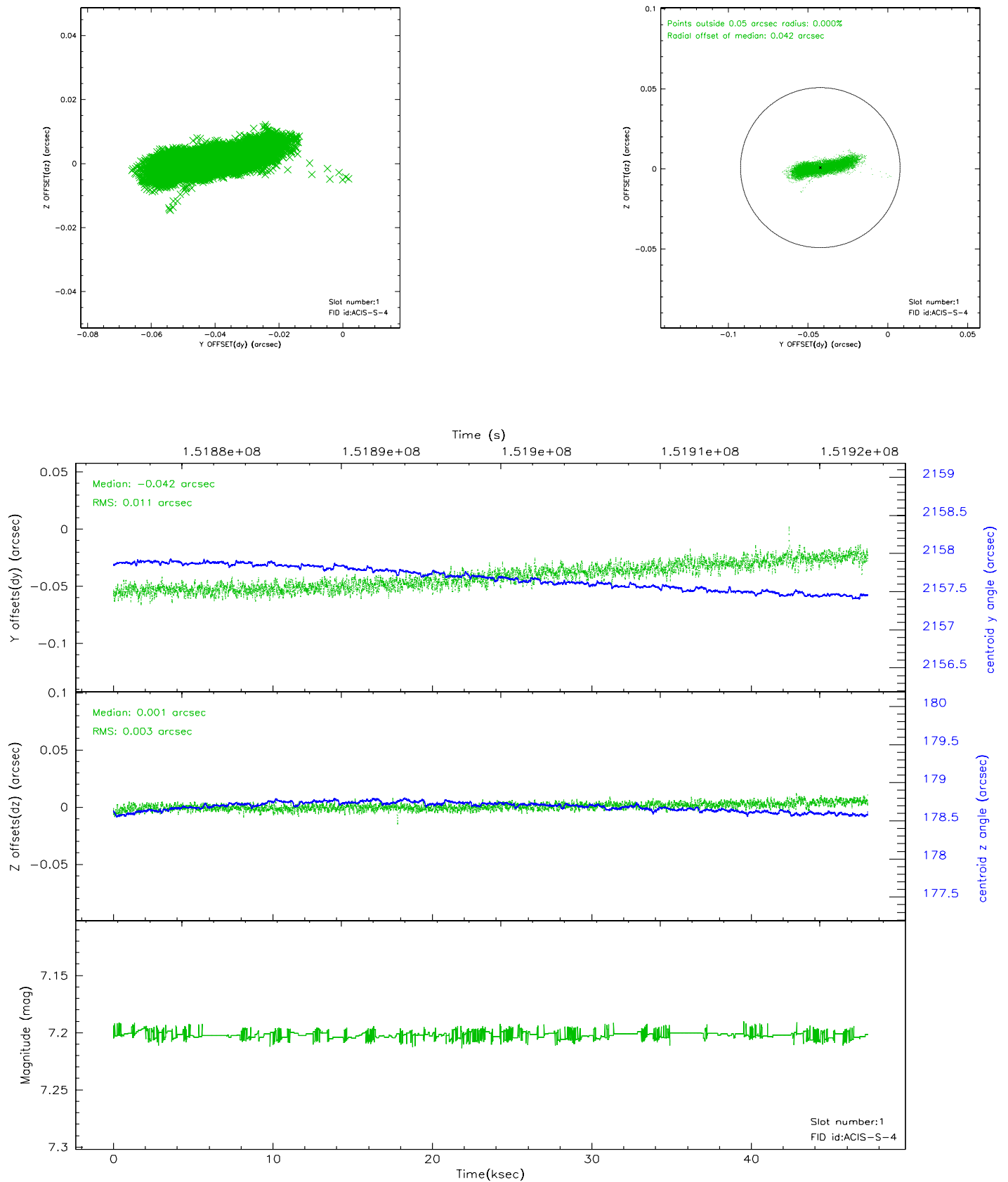


2.5 FID Slots

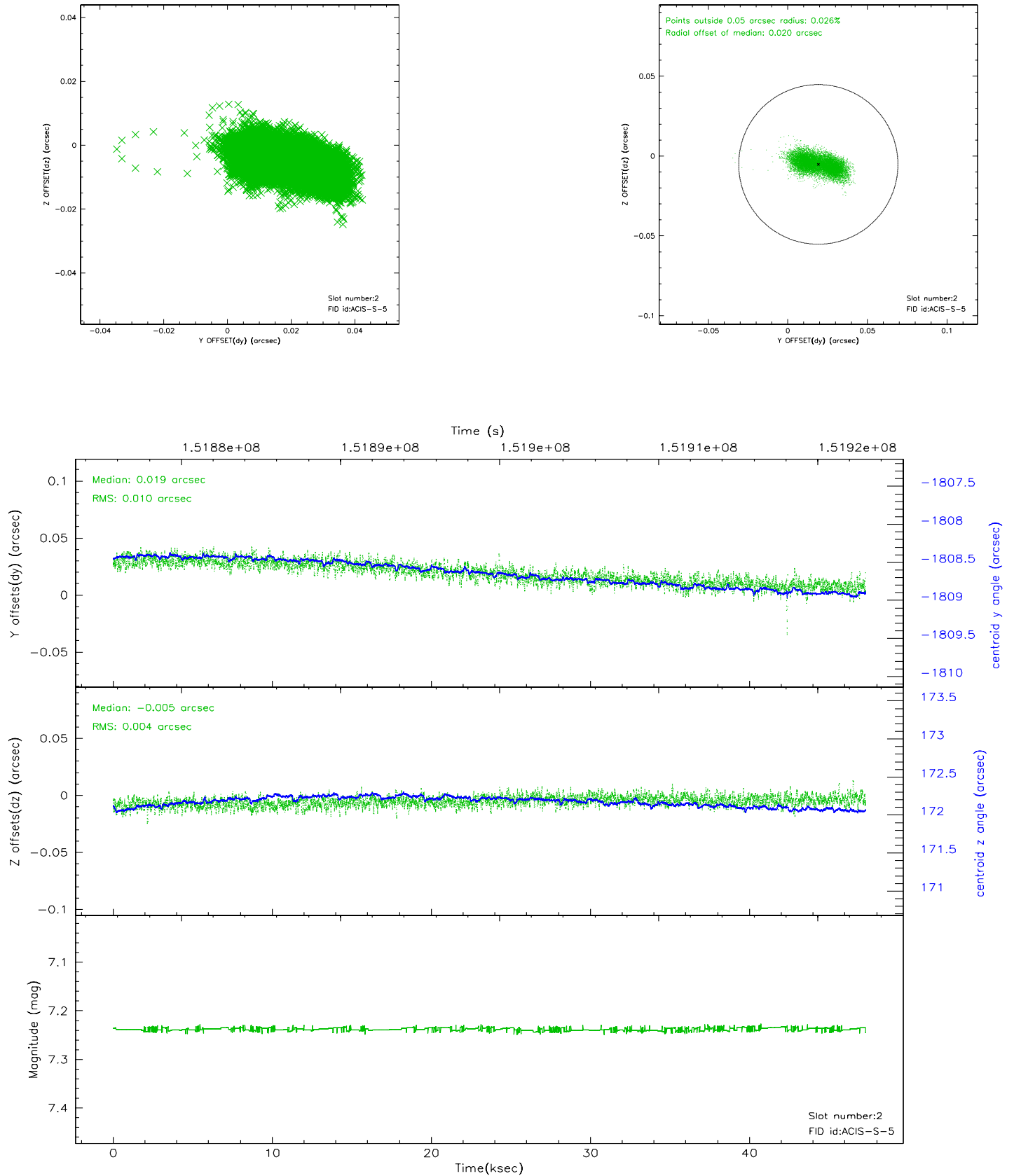
2.5.1 Slot 0



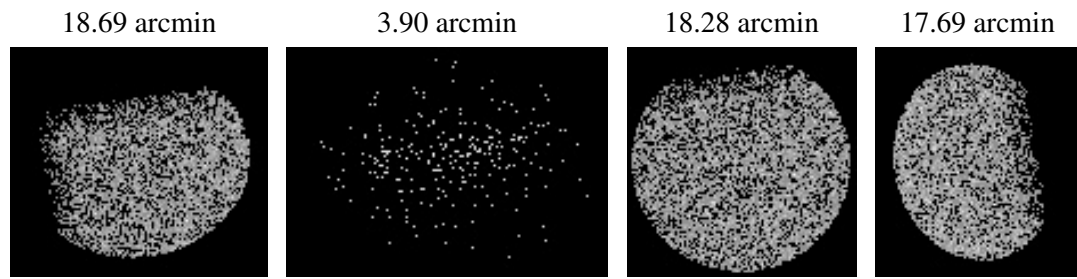
2.5.2 Slot 1



2.5.3 Slot 2



3 Point Sources



A Summary

A.1 Status

V&V Scientist	Beth Sundheim
V&V Date (YYYY-MM-DD)	2006.10.12
V&V Edition	1
V&V Disposition and Status	OK
V&V Charge Time	47.305

A.2 Comments