

V&V Reference Report

L2 ASCDS Version : 7.6.9

Observation 2863 - L2 Version 001
Chandra X-Ray Center

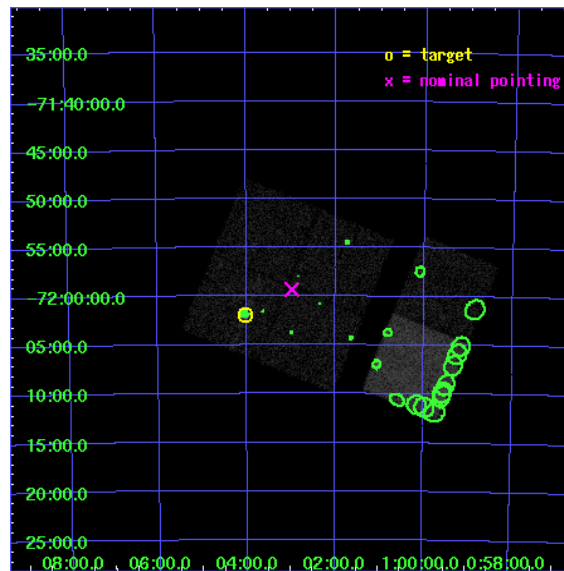
L2 Processing Date : Sep 20 2006

Contents

1	Front	2
2	OBI	3
2.1	OBI	3
2.1.1	Images	3
2.1.2	Bias	3
2.1.3	Parameters	4
2.1.4	Events	4
2.2	Compared Parameters	5
2.3	Aspect	6
2.4	Star Slots	9
2.4.1	Slot 3	9
2.4.2	Slot 4	10
2.4.3	Slot 5	11
2.4.4	Slot 6	12
2.4.5	Slot 7	13
2.5	FID Slots	14
2.5.1	Slot 0	14
2.5.2	Slot 1	15
2.5.3	Slot 2	16
3	Point Sources	17
A	Summary	18
A.1	Status	18
A.2	Comments	18

1 Front

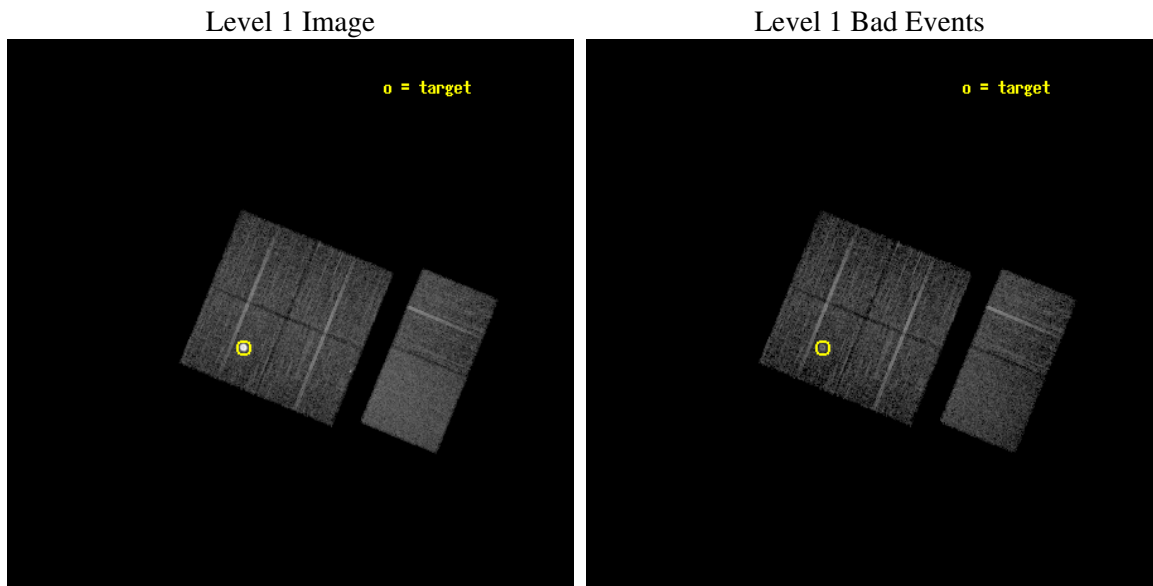
seq_num	590252
obs_id	2863
title	AO3B ACIS-I CALIBRATION OBSERVATIONS OF E0102-72
observer	Dr. CXC Calibration
object	E0102-72.3 [Chip I1, T=120, Offsets=-4,-3,0]
dtcycle	0
cycle	P
ra_targ	16.01
dec_targ	-72.032028
ra_nom	15.744869206635
dec_nom	-71.988760401505
roll_nom	112.27580531189
revision	2
ontime	7657.5999714732
livetime	7560.6348297813
ontime0	7654.3589813411
ontime1	7657.5999714732
ontime2	7654.3590112329
ontime3	7657.5999714732
ontime6	7657.5999714732
ontime7	7657.5999714732
l2events	74801



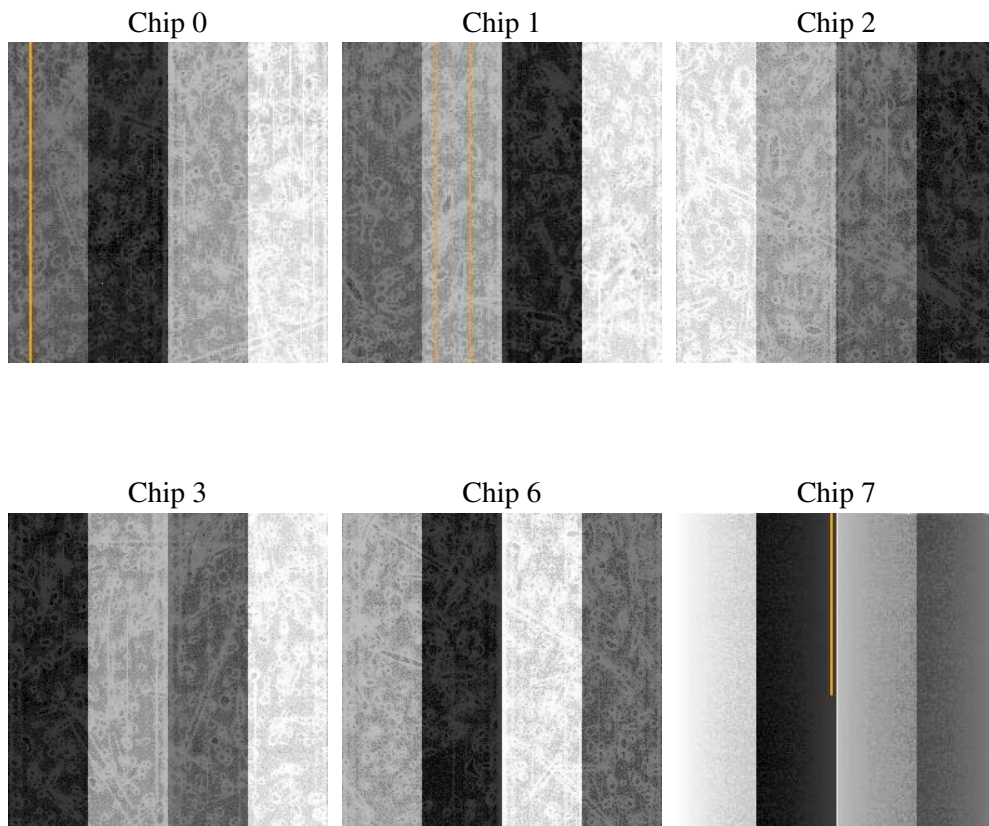
2 OBI

2.1 OBI

2.1.1 Images



2.1.2 Bias



2.1.3 Parameters

obi_num	0
ascdsver	7.6.9
caldbver	3.2.3
date	2006-09-20T22:42:44
revision	2

sched_exp_time	7900.000000
ontime	7661.725653708
ontime0	7661.7256537676
ontime1	7661.725653708
ontime2	7658.4847133756
ontime3	7661.725653708
ontime6	7661.725653708
ontime7	7661.725653708
l1events	334218

2.1.4 Events

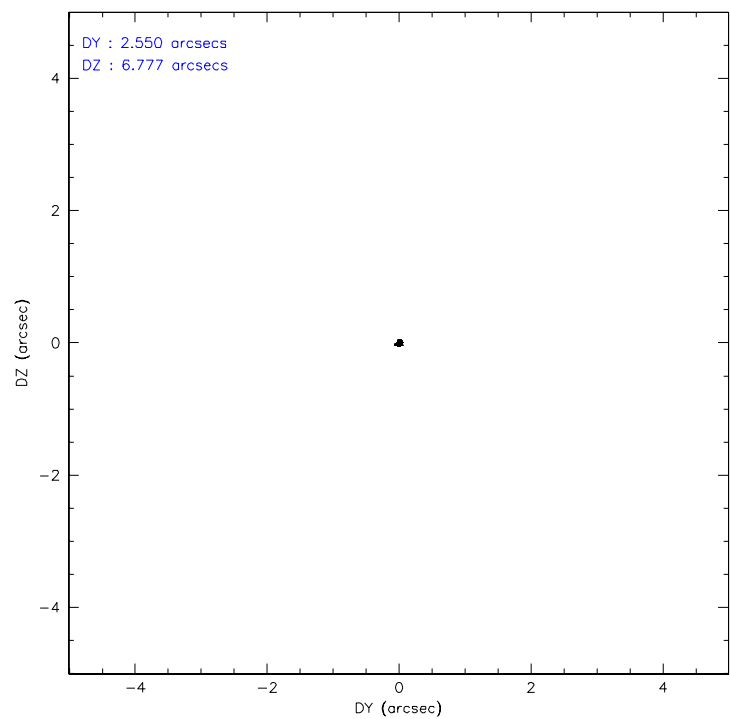
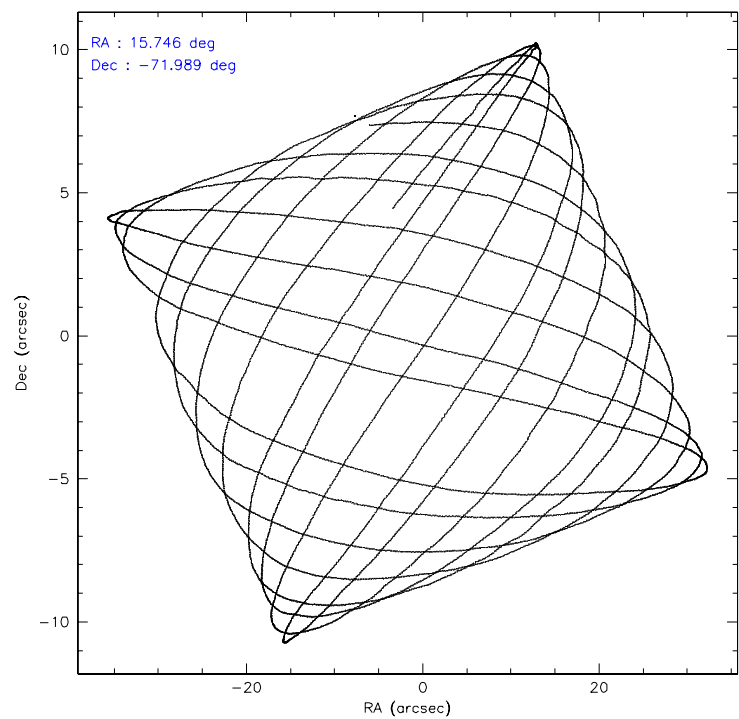
	ccd 0	ccd 1	ccd 2	ccd 3	ccd 6	ccd 7
level 1 events	45642	71424	49321	48729	52859	66243
rejected events	39771	40219	43227	42509	46790	40910
rejected %	87%	56%	87%	87%	88%	61%

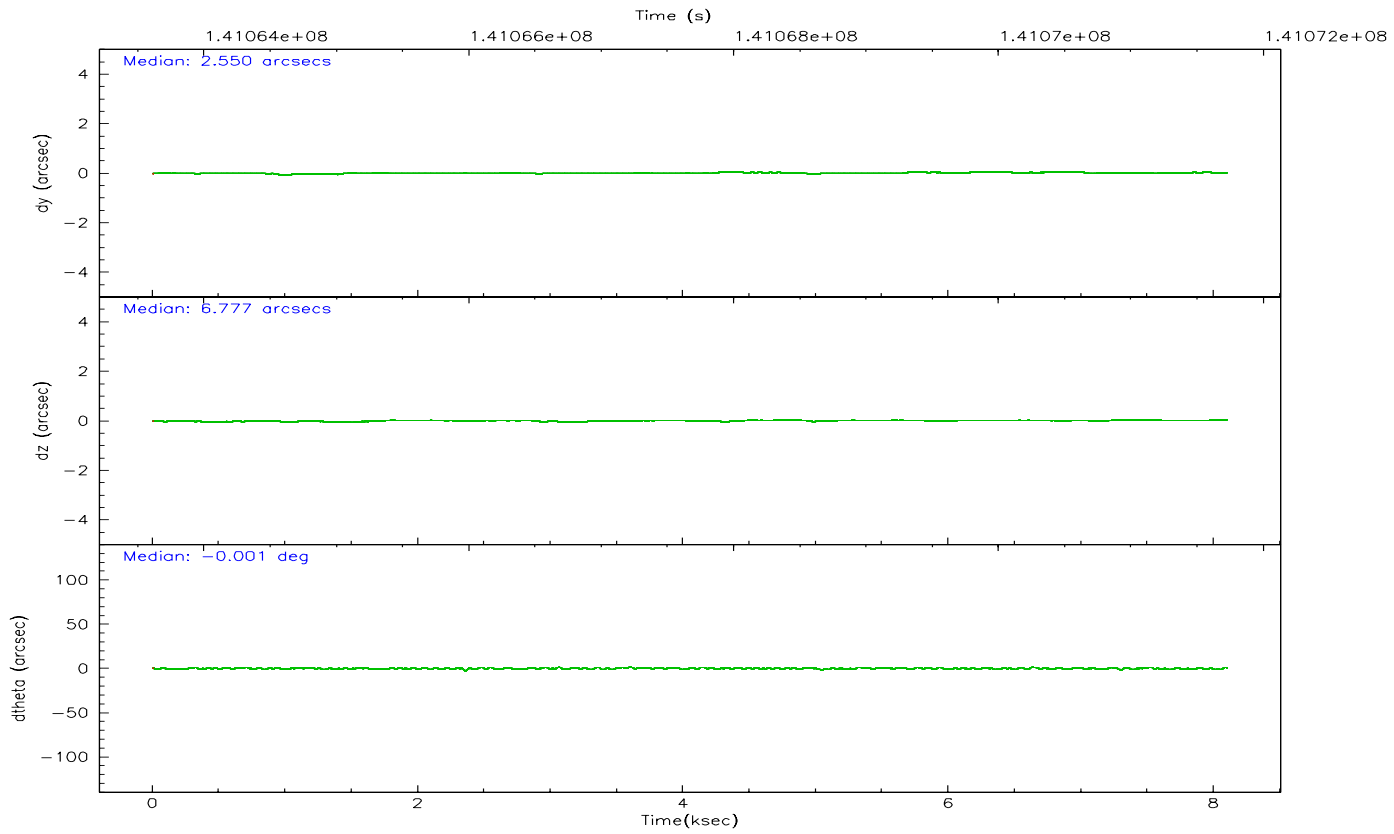
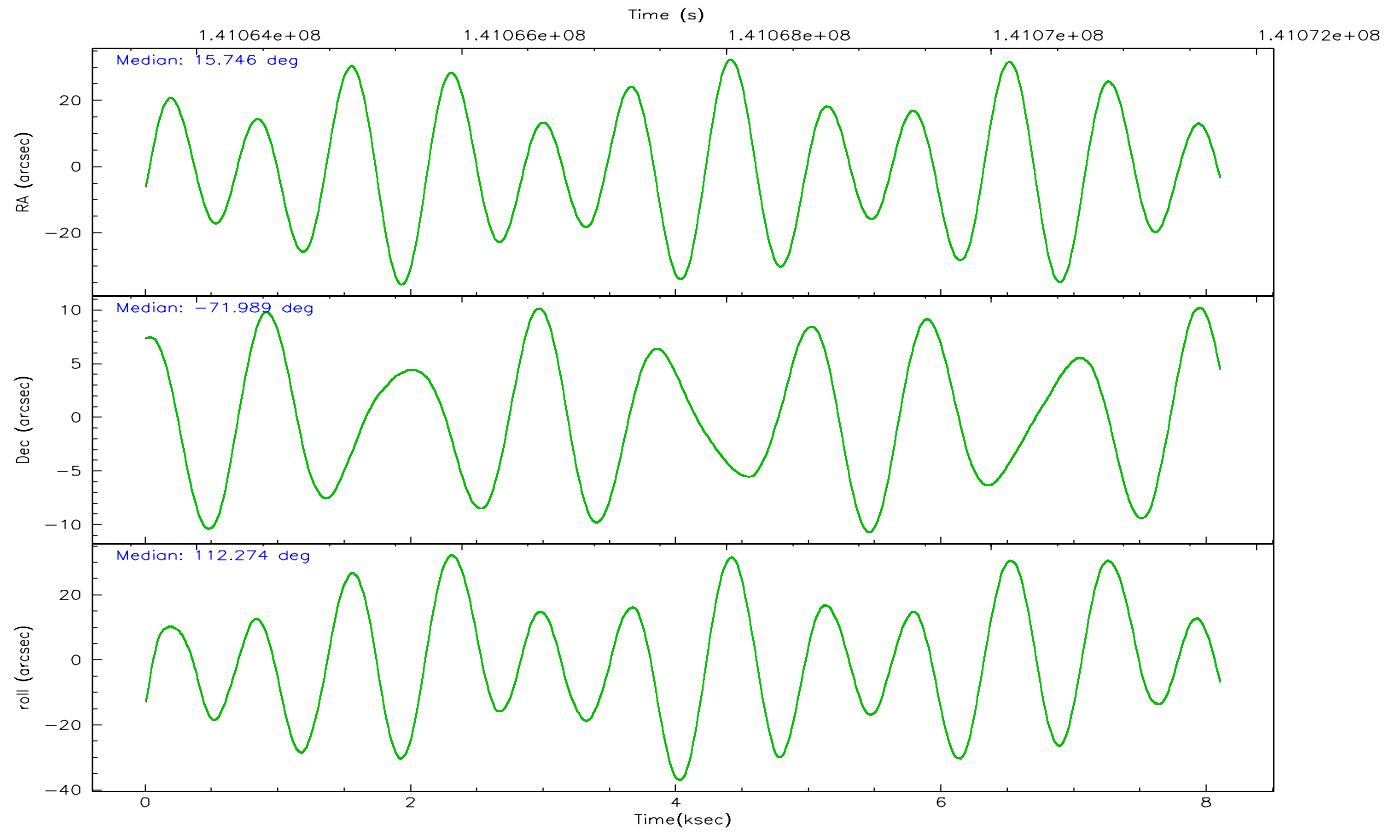
	ccd 0	ccd 1	ccd 2	ccd 3	ccd 6	ccd 7
grade 0 events	2506	24885	2801	2852	2497	1712
	5%	34%	5%	5%	4%	2%
grade 1 events	24	231	26	20	23	38
	0%	0%	0%	0%	0%	0%
grade 2 events	1267	3035	1254	1171	1212	6321
	2%	4%	2%	2%	2%	9%
grade 3 events	575	1049	504	585	610	1348
	1%	1%	1%	1%	1%	2%
grade 4 events	536	971	532	584	584	1387
	1%	1%	1%	1%	1%	2%
grade 5 events	1799	2066	1690	2001	2268	4504
	3%	2%	3%	4%	4%	6%
grade 6 events	995	1289	1005	1034	1173	14587
	2%	1%	2%	2%	2%	22%
grade 7 events	37940	37898	41509	40482	44492	36346
	83%	53%	84%	83%	84%	54%

2.2 Compared Parameters

Parameter	Planned	Actual	Parameter	Planned	Actual
Instrument	ACIS	ACIS	Obspar format version number	6	6
Detector	ACIS-012367	ACIS-012367	Obspar file type	PREDICTED	ACTUAL
Grating	NONE	NONE	Obspar update status	NONE	UPDATED
Data mode	FAINT	FAINT	Number of optional ACIS chips dropped	0	0
Observation mode	POINTING	POINTING	On-chip summing requested	N	N
Pointing RA	15.815056	15.74486920663456	Subarray requested	NONE	NONE
Pointing Dec	-72.005469	-71.98876040150522	Alternating exposures requested	N	N
Pointing Roll	112.133855	112.2758053118891	Primary exposure time	0.000000	3.2
Window start time	139276864.184000	139276864.184000			
Window stop time	141782464.184000	141782464.184000			
SIM focus pos (mm)	-0.782348	-0.7809083437167272			
SIM defocus (mm)	0	0.001439871863259334			
SIM translation stage pos (mm)	-233.592463	-233.5874344608287			
SIM translation stage offset (mm)	0	-0.005018542100998502			
Observation start time	141063823.184000	141063446.86346			
Observation start date	2002-06-21T16:22:39	2002-06-21T16:17:26			
Observation end time	141071723.184000	141071856.98881			
Observation end date	2002-06-21T18:34:19	2002-06-21T18:37:36			
Read mode	TIMED	TIMED			

2.3 Aspect



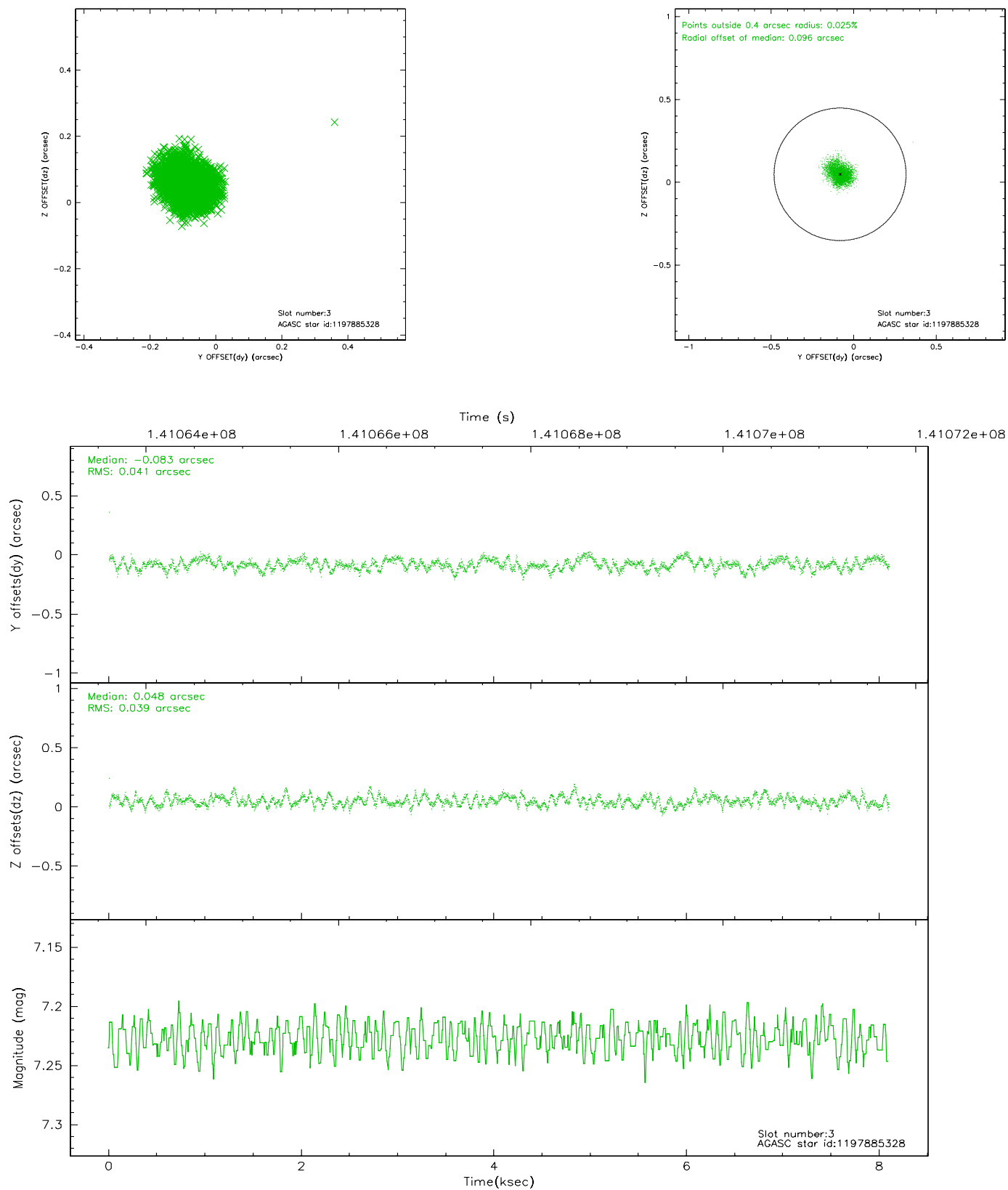


Slot Statistics

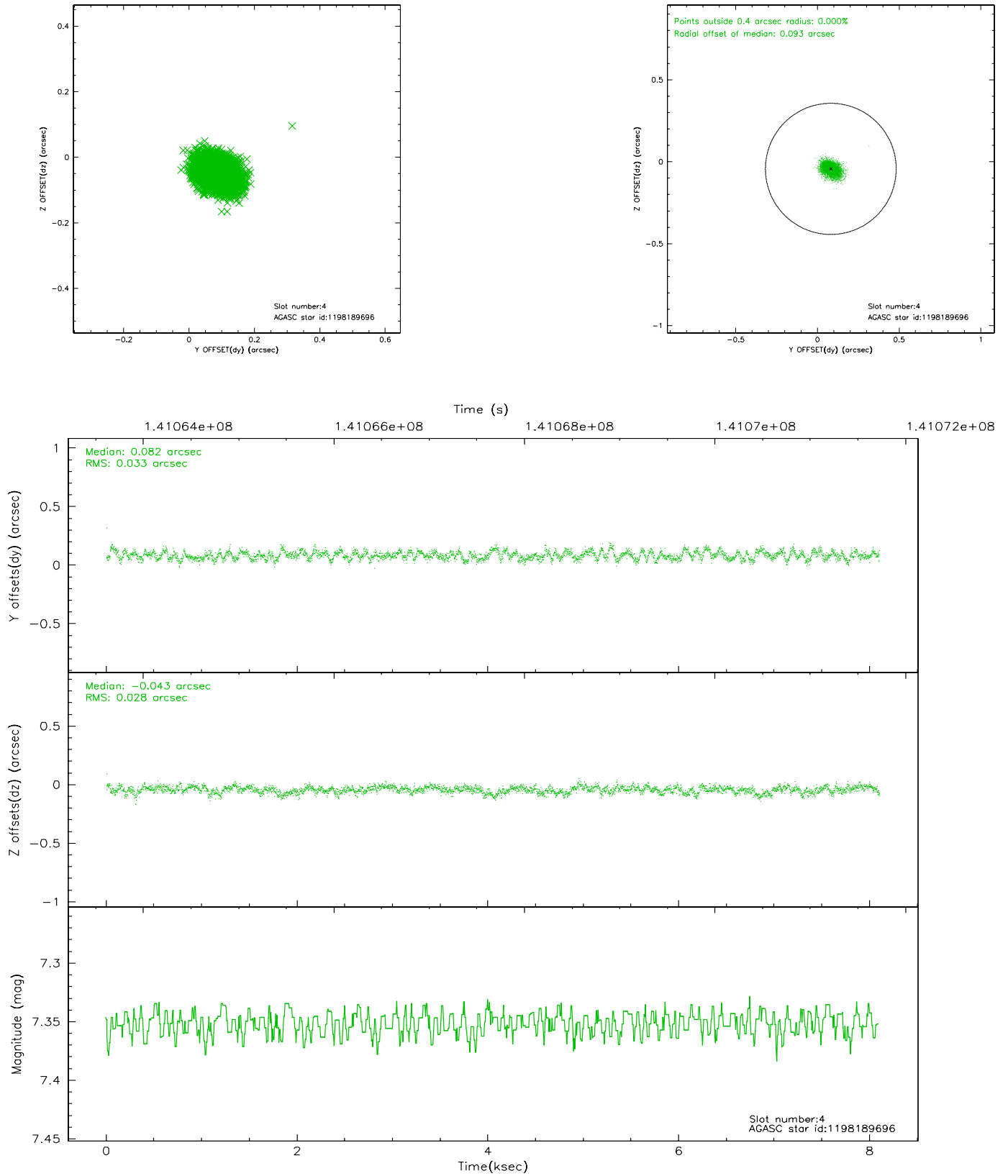
slot	status	id	mag	n_pts	med_dy	med_dz	dr1	dr2	ra	dec	mean_y	mean_z
0	FID	ACIS-I-1	7.24	1976	-0.044	-0.038	0.006	0.011	0.000000	0.000000	937.19	-830.22
1	FID	ACIS-I-3	7.45	1976	0.020	0.193	0.006	0.011	0.000000	0.000000	55.14	-963.62
2	FID	ACIS-I-6	7.26	1975	-0.064	-0.088	0.005	0.010	0.000000	0.000000	402.96	1711.15
3	GUIDE	1197885328	7.23	3952	-0.083	0.048	0.061	0.096	16.283090	-71.733943	705.13	-856.11
4	GUIDE	1198189696	7.35	3952	0.082	-0.043	0.046	0.075	15.223750	-72.697522	-2071.44	1526.79
5	GUIDE	1197750936	7.58	3952	-0.107	0.104	0.057	0.090	15.387940	-71.549550	1701.95	-165.61
6	GUIDE	1197749416	10.27	3887	0.010	-0.062	0.137	0.220	13.610513	-71.871242	1336.87	2122.35
7	GUIDE	1197749664	9.57	3949	0.092	-0.050	0.082	0.137	15.809015	-72.366369	-1200.03	496.82

2.4 Star Slots

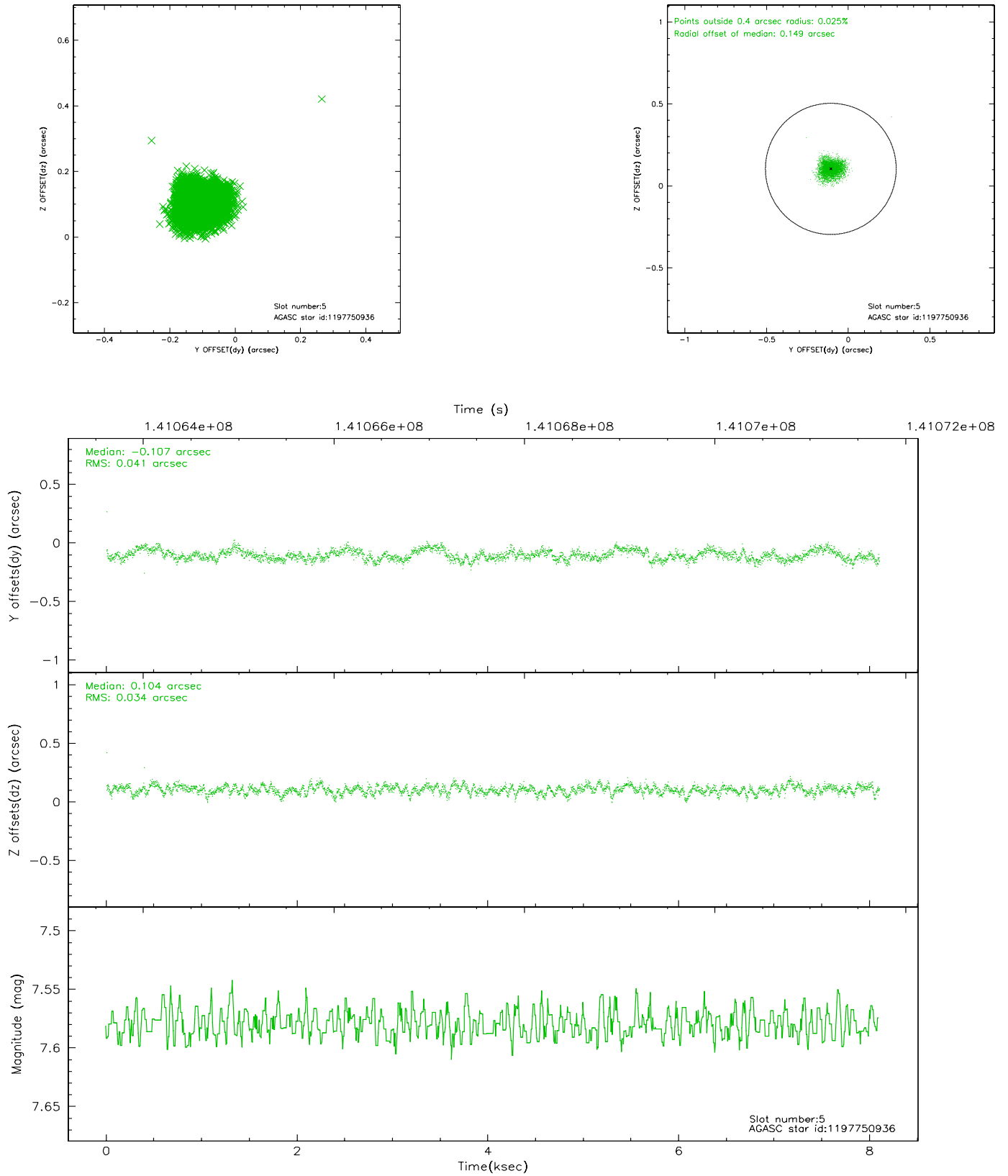
2.4.1 Slot 3



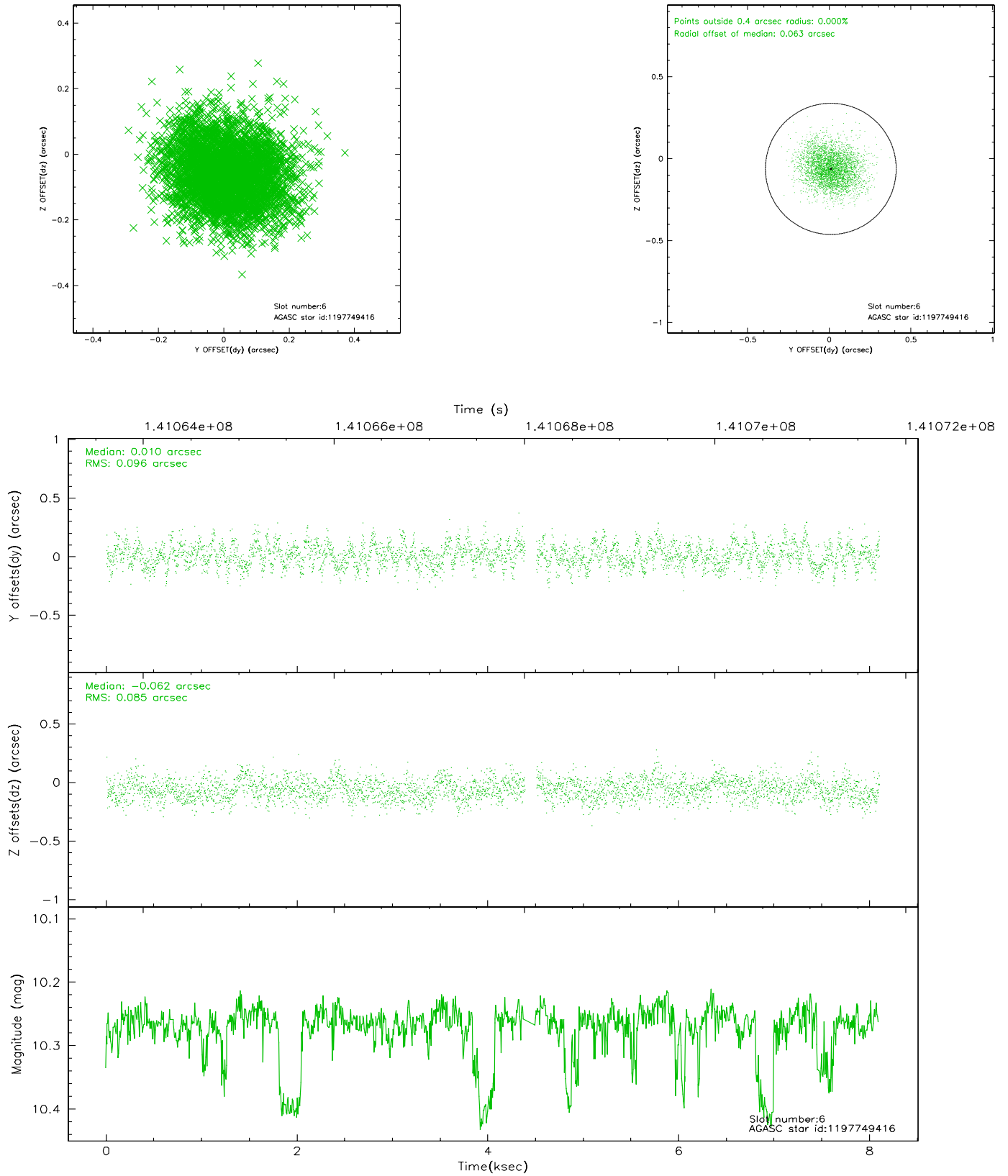
2.4.2 Slot 4



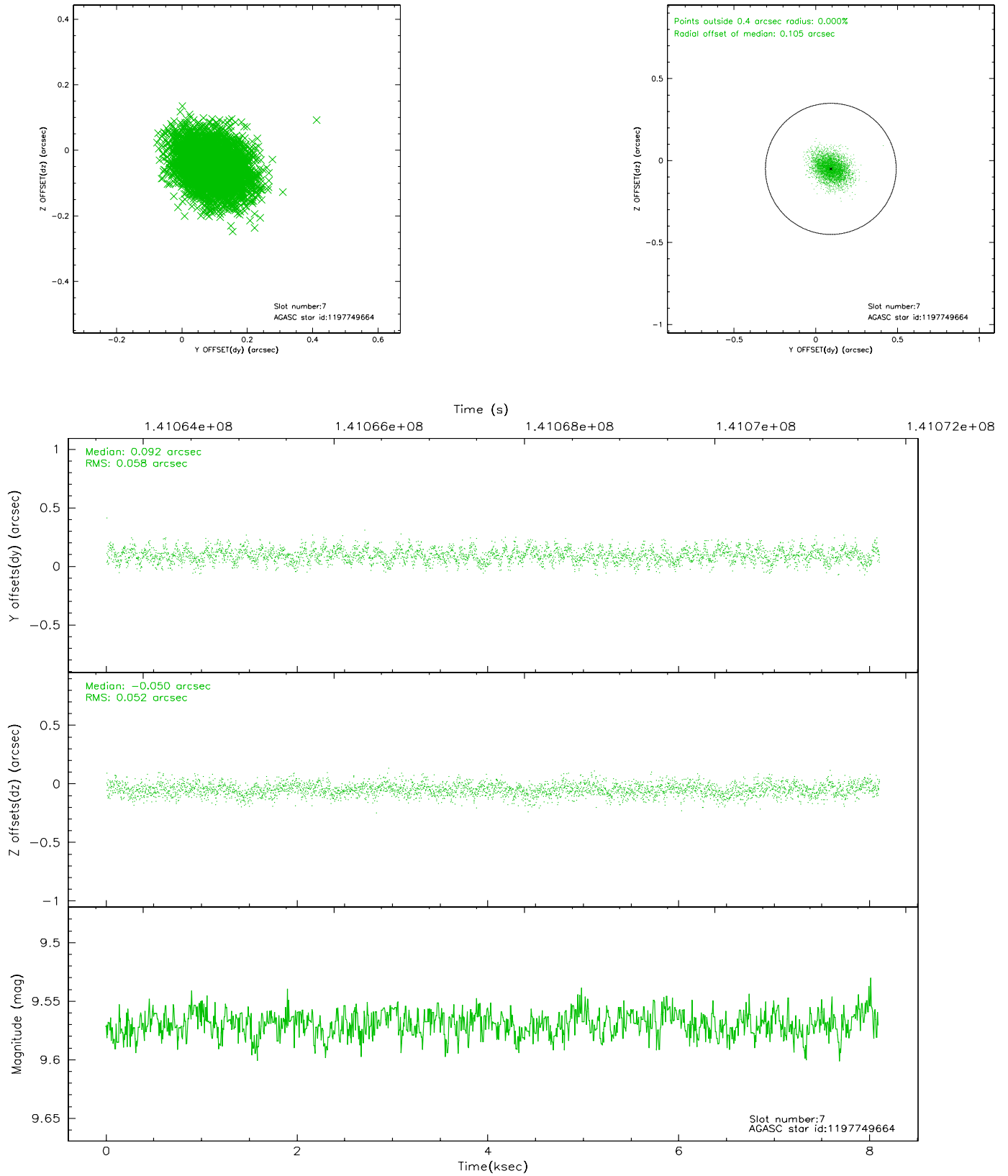
2.4.3 Slot 5



2.4.4 Slot 6

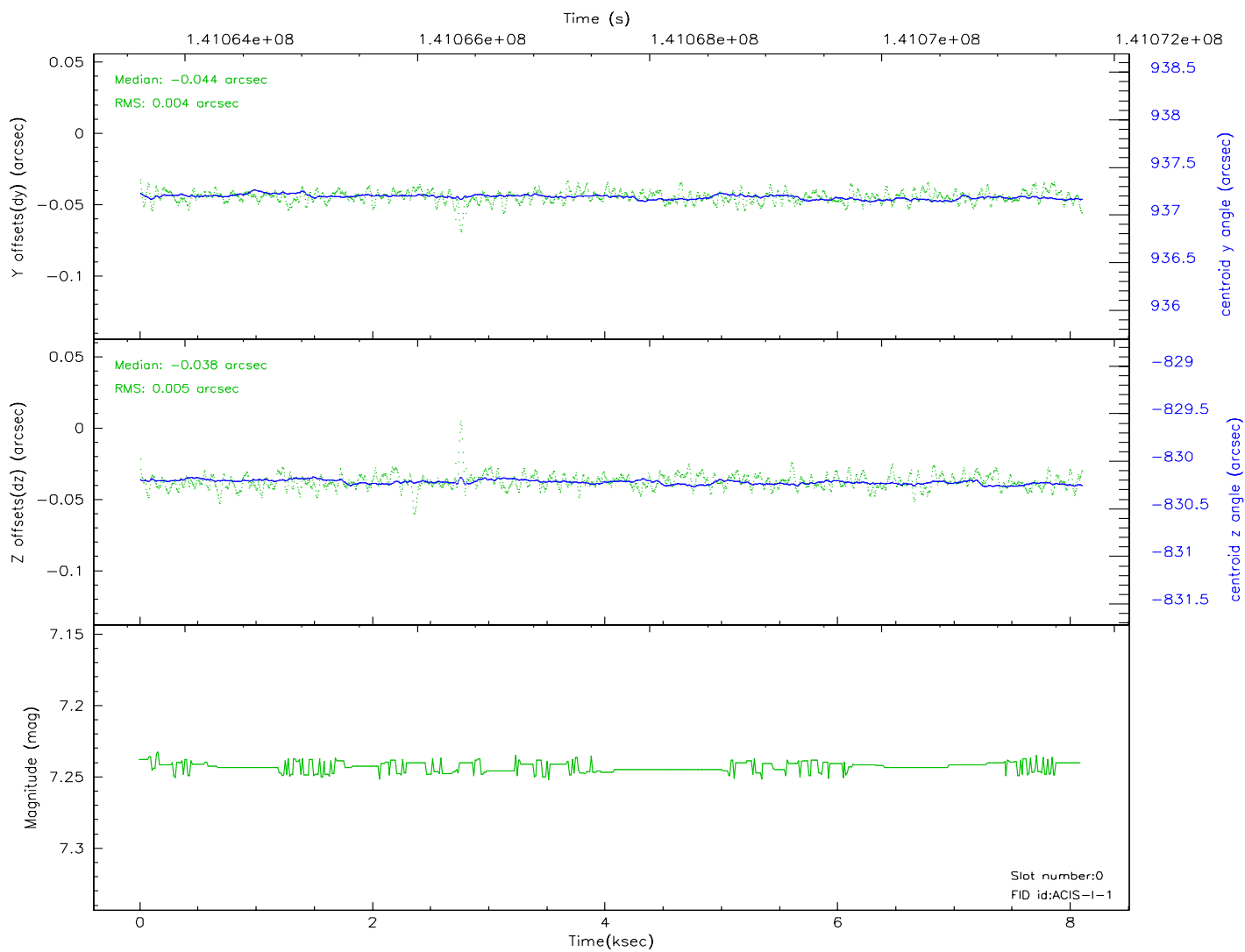
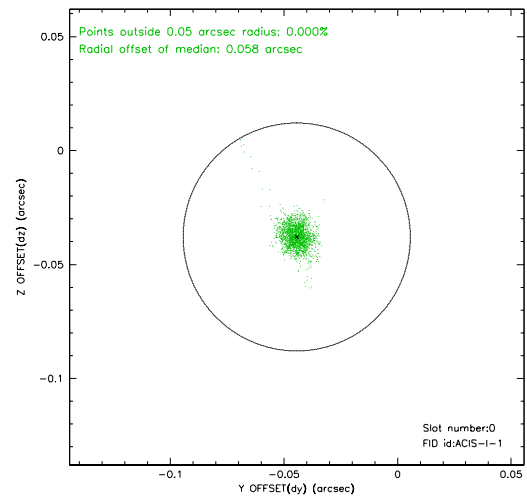
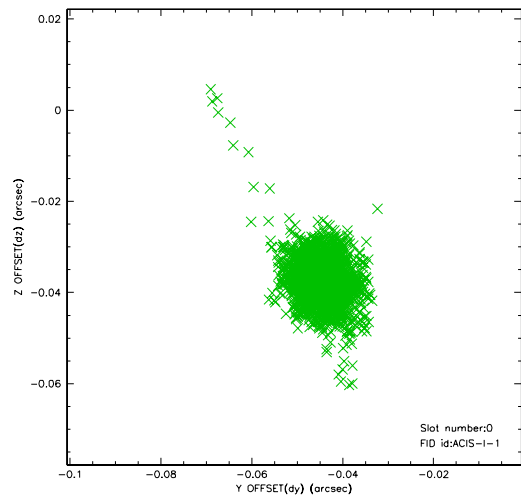


2.4.5 Slot 7

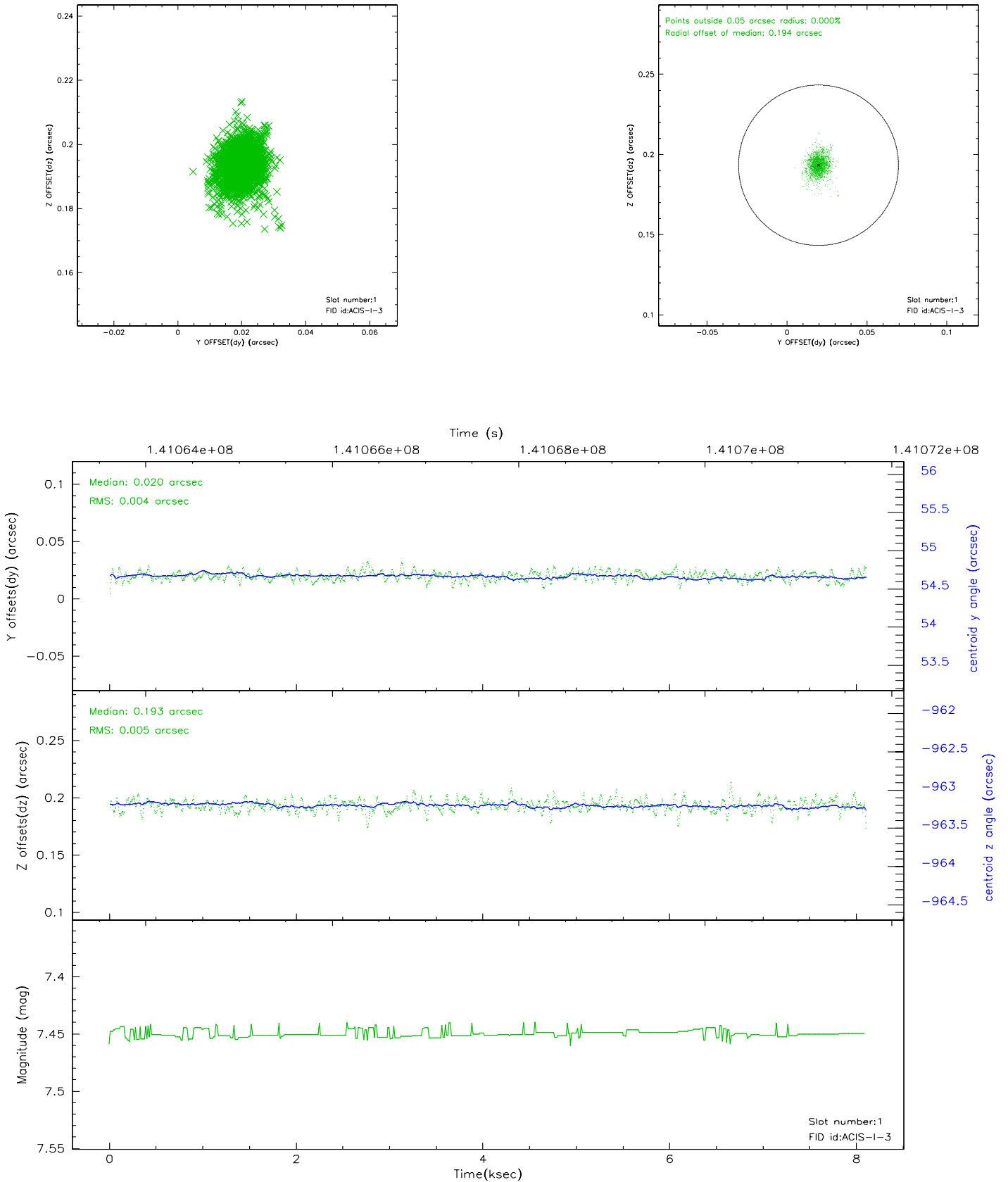


2.5 FID Slots

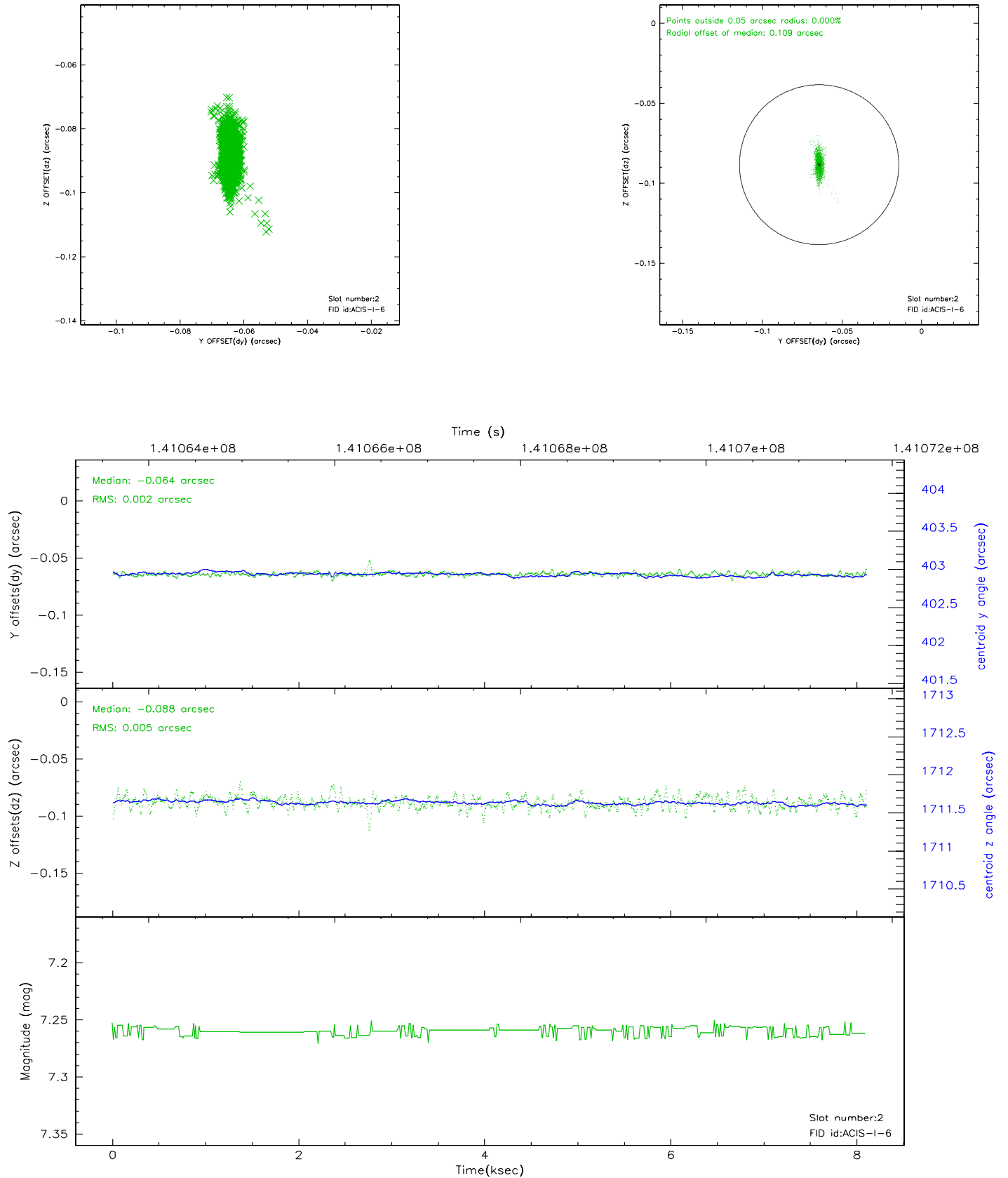
2.5.1 Slot 0



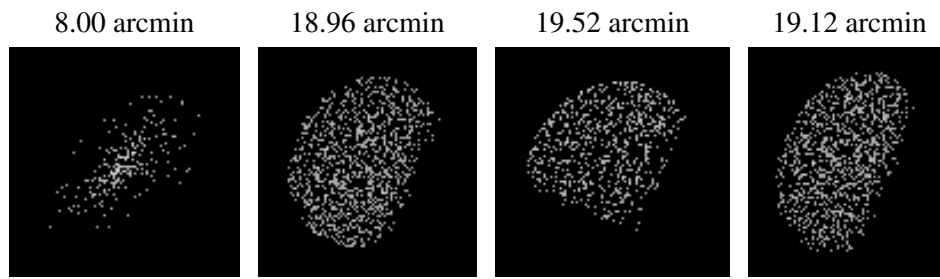
2.5.2 Slot 1



2.5.3 Slot 2



3 Point Sources



A Summary

A.1 Status

V&V Scientist	Beth Sundheim
V&V Date (YYYY-MM-DD)	2006.09.21
V&V Edition	1
V&V Disposition and Status	OK
V&V Charge Time	7.66

A.2 Comments

Window constraint satisfied.