

V&V Reference Report

L2 ASCDS Version : 8.4.5

Observation 2143 - L2 Version 3
Chandra X-Ray Center

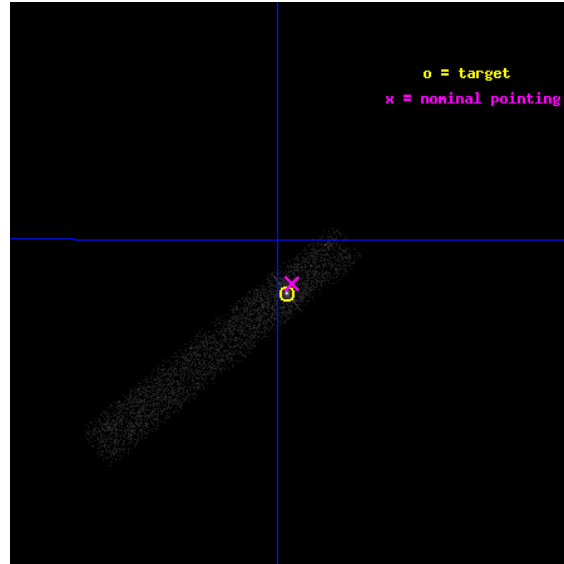
L2 Processing Date : Sep 15 2012

Contents

1	Front	2
2	OBI	3
2.1	OBI	3
2.1.1	Images	3
2.1.2	Bias	3
2.1.3	Parameters	4
2.1.4	Events	4
2.2	Compared Parameters	5
2.3	Aspect	6
2.4	Star Slots	9
2.4.1	Slot 3	9
2.4.2	Slot 4	10
2.4.3	Slot 5	11
2.4.4	Slot 6	12
2.4.5	Slot 7	13
2.5	FID Slots	14
2.5.1	Slot 0	14
2.5.2	Slot 1	15
2.5.3	Slot 2	16
A	Summary	17
A.1	Status	17
A.2	Comments	17

1 Front

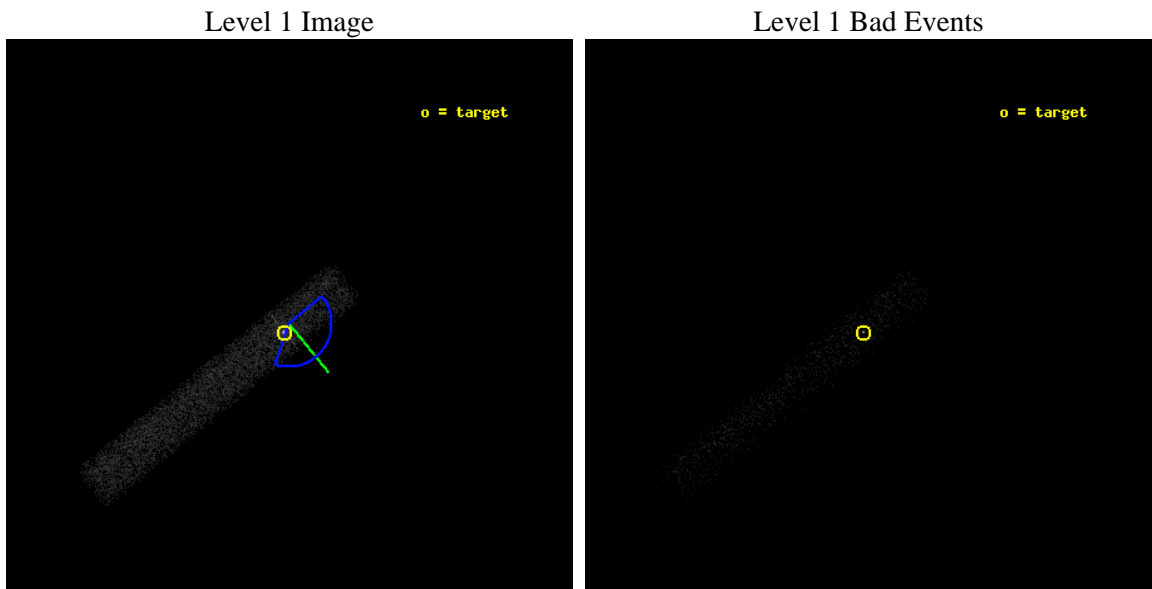
seq_num	700333	Sequence number
obs_id	2143	Observation id
title	AN UNBIASED SURVEY OF X-RAY AND OPTICAL EMISSION FROM EXTENDED RADIO JETS IN AGN	Proposal title
observer	Dr. Rita Sambruna	Principal investigator
object	1641+399	Source name
dtcycle	0	
cycle	P	events from which exps? Prim/Second/Both
ra_targ	250.745	Observer's specified target RA [deg]
dec_targ	39.810278	Observer's specified target Dec [deg]
ra_nom	250.74220883991	Nominal RA [deg]
dec_nom	39.814215858091	Nominal Dec [deg]
roll_nom	141.04098564428	Nominal Roll [deg]
revision	3	Processing version of data
ontime	9984.8001487851	Sum of GTIs [s]
livetime	9055.6866939825	Livetime [s]
ontime7	9984.8001487851	Sum of GTIs [s]
l2events	12746	Number of level 2 events



2 OBI

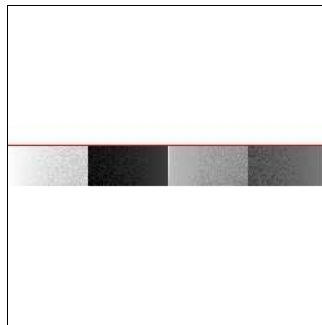
2.1 OBI

2.1.1 Images



2.1.2 Bias

Chip 7



2.1.3 Parameters

obi_num	2	Obi number	sched_exp_time	9400.000000	[s] Scheduled observation exposure time
ascdsver	8.4.5	Processing system revision	ontime	9984.8001487851	Sum of GTIs [s]
caldsver	4.5.1.1	 	ontime7	9984.8001487851	Sum of GTIs [s]
date	2012-09-15T15:28:48	Date and time of file creation	l1events	20364	Number of level 1 events
revision	3	Processing version of data			

2.1.4 Events

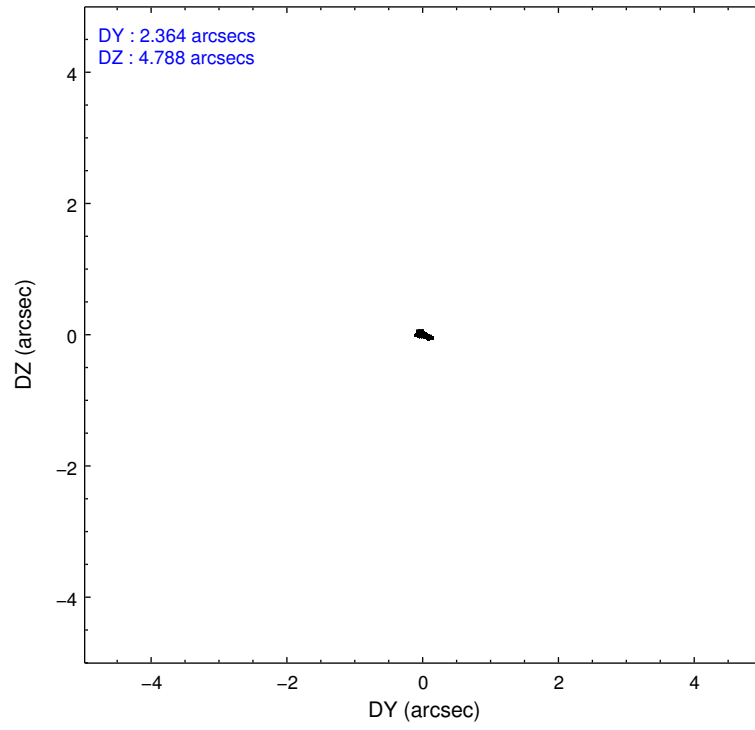
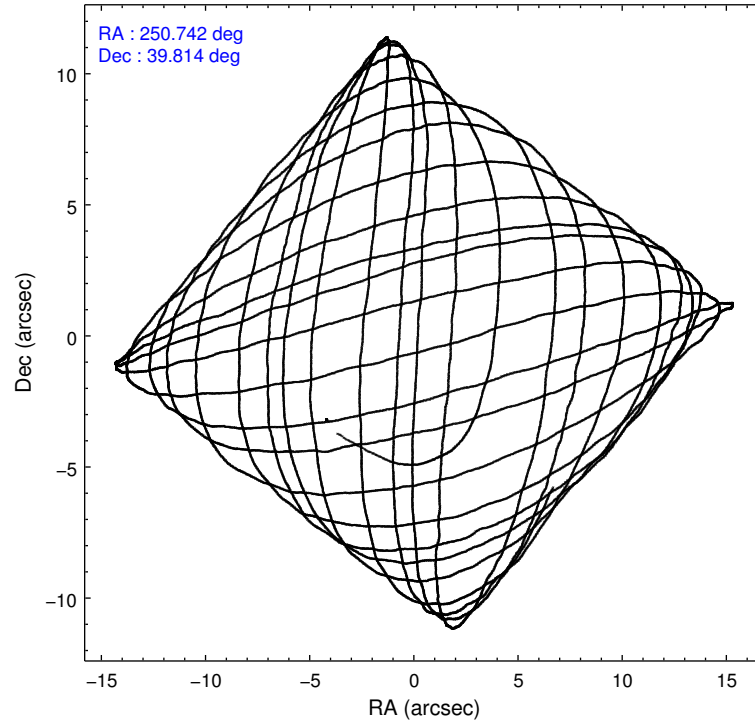
	ccd 7
level 1 events	20364
rejected events	7043
rejected %	34%

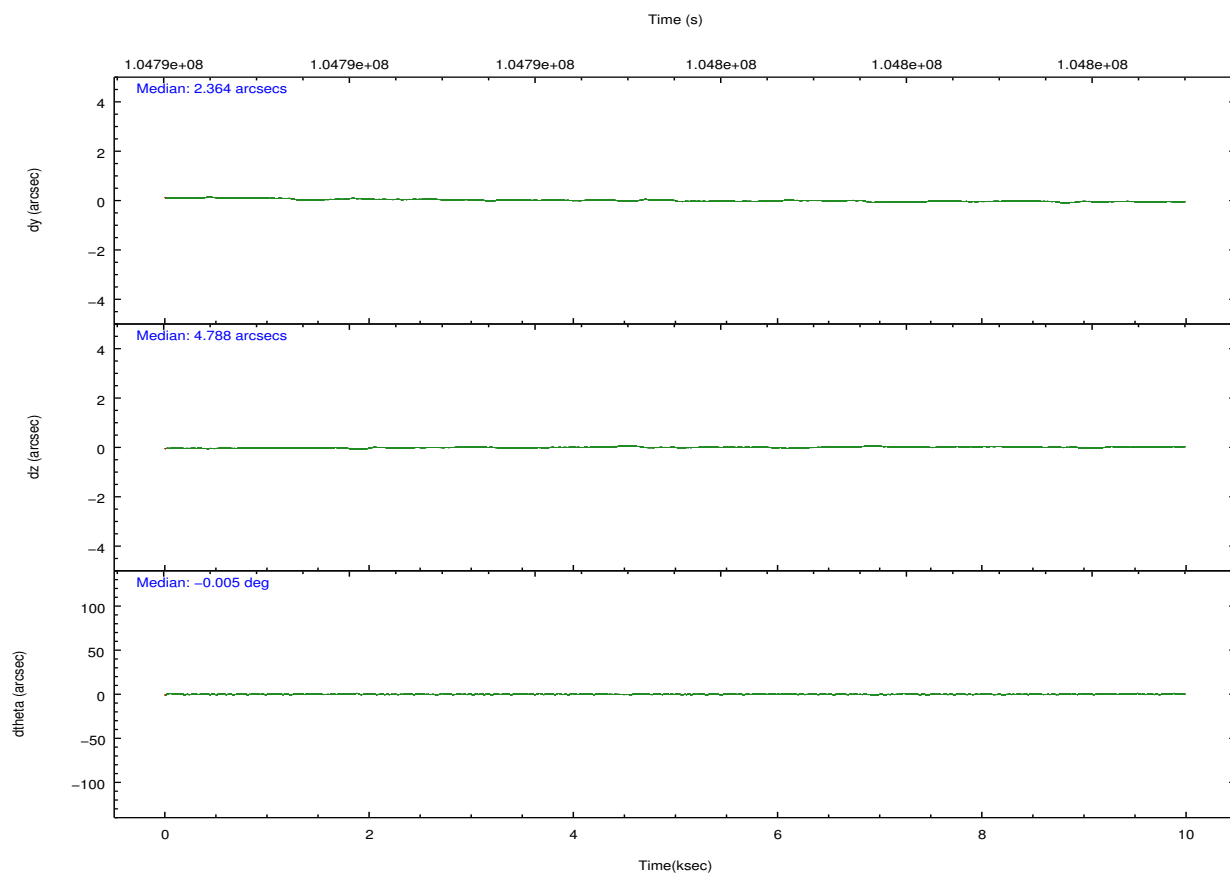
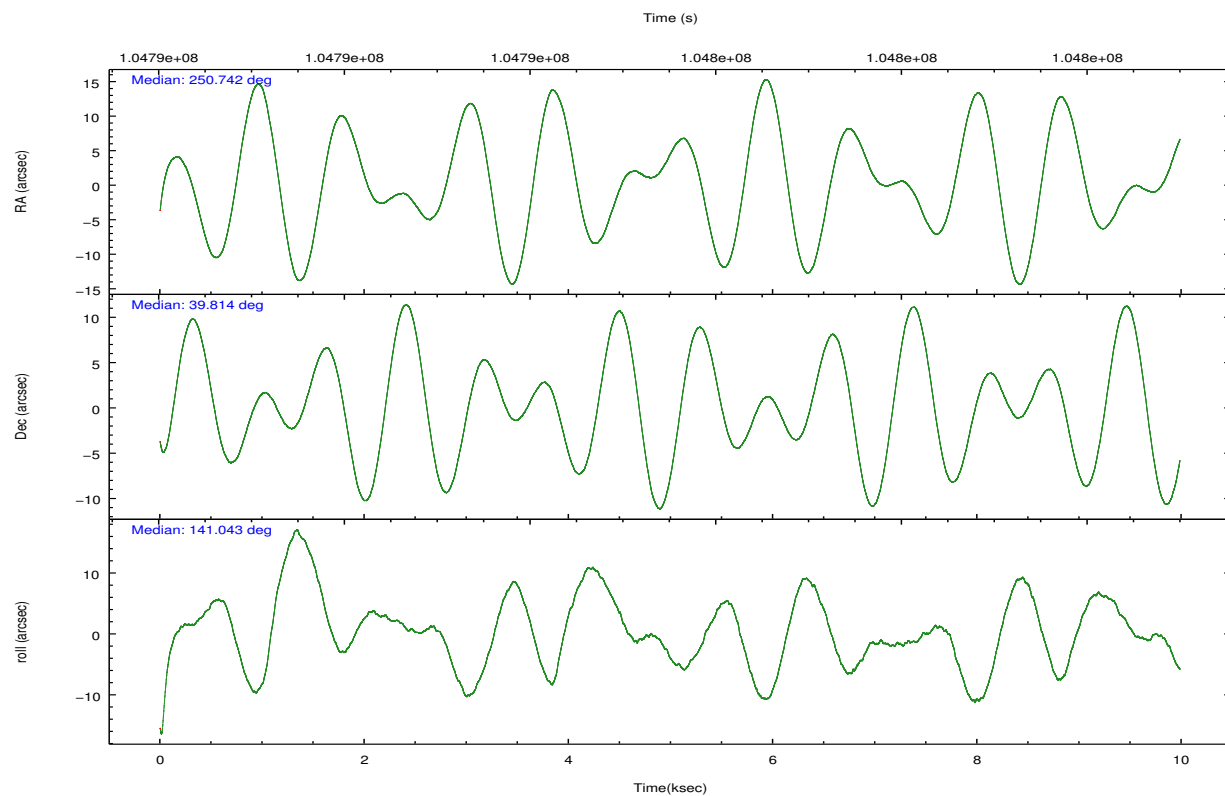
	ccd 7
grade 0 events	3355
	16%
grade 1 events	93
	0%
grade 2 events	2938
	14%
grade 3 events	1646
	8%
grade 4 events	1591
	7%
grade 5 events	1332
	6%
grade 6 events	4027
	19%
grade 7 events	5382
	26%

2.2 Compared Parameters

Parameter	Planned	Actual	Parameter	Planned	Actual
Instrument	ACIS	ACIS	Obspar format version number	7	7
Detector	ACIS-7	ACIS-7	Obspar file type	PREDICTED	ACTUAL
Grating	NONE	NONE	Obspar update status	NONE	UPDATED
Data mode	FAINT	FAINT	Number of optional ACIS chips dropped	0	0
Observation mode	POINTING	POINTING	On-chip summing requested	N	N
[deg] Pointing RA	250.777387	250.7422088399122	Subarray requested	CUSTOM	1/8
[deg] Pointing Dec	39.810225	39.81421585809051	Subarray start row	449	449
[deg] Pointing Roll	140.861848	141.0409856442784	Subarray row count	128	128
[deg] Roll angle	125.000000	125.000000	Alternating exposures requested	N	N
[deg] Roll tolerance	74.000000	74.000000	[s] Primary exposure time	0.000000	0.4
Roll constraint allows 180D rotation	N	N			
[mm] SIM focus pos	-0.684267	-0.6828225247311905			
[mm] SIM defocus	0	0.001444936568705701			
[mm] SIM translation stage pos	-190.132523	-190.1425803651734			
[mm] SIM translation stage offset	0	0.01005778216563158			
[s] Observation start time (MET)	104791102.184000	104789942.32841			
Observation start date	2001-04-27T20:37:18	2001-04-27T20:19:02			
[s] Observation end time (MET)	104800502.184000	104801107.14135			
Observation end date	2001-04-27T23:13:58	2001-04-27T23:25:07			
Read mode	TIMED	TIMED			

2.3 Aspect



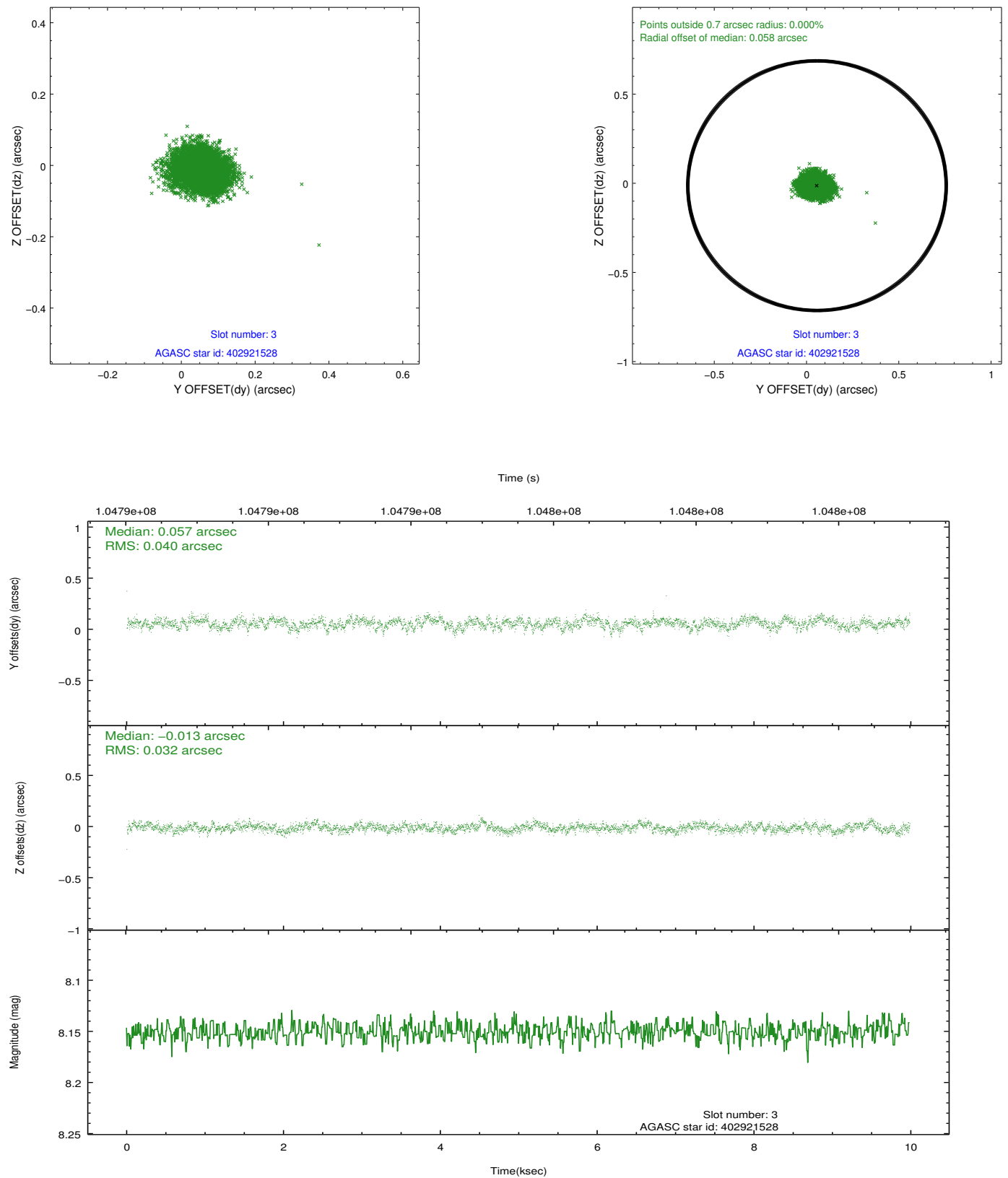


Slot Statistics

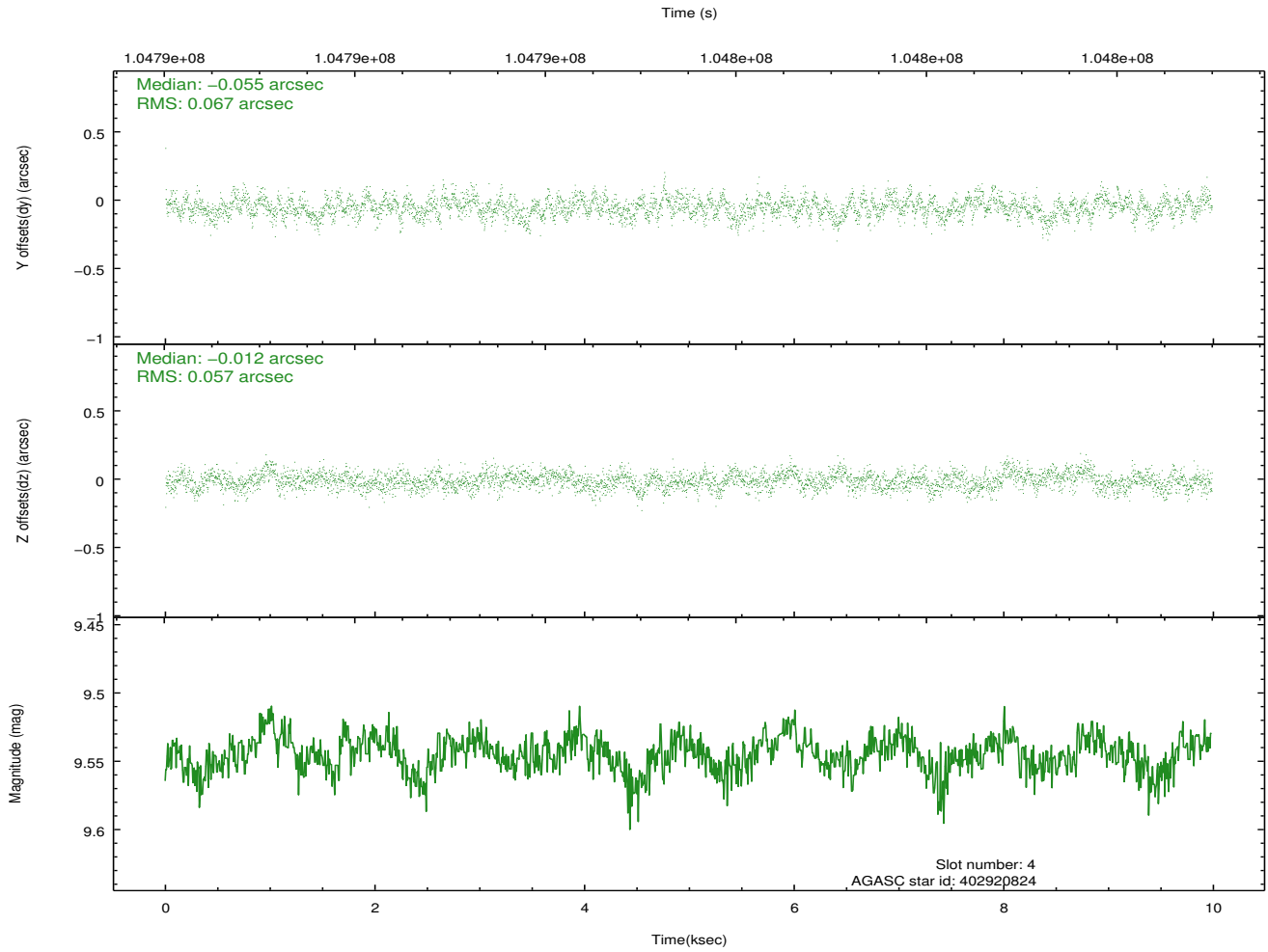
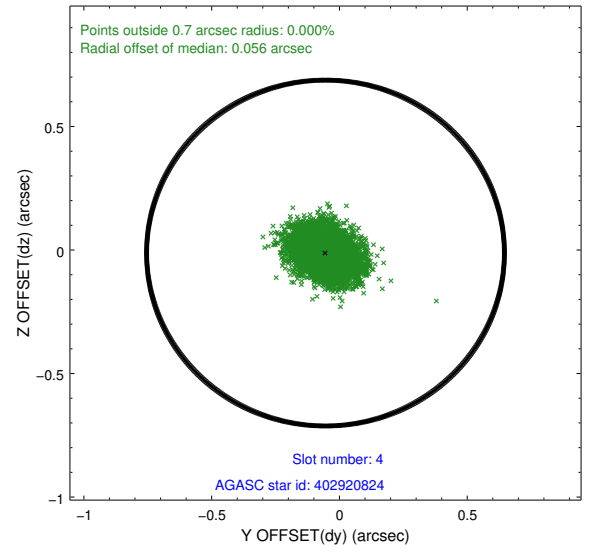
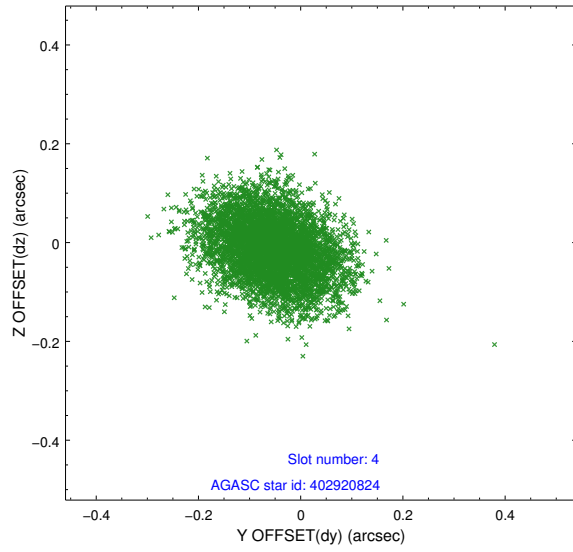
slot	status	id	mag	n_pts	med_dy	med_dz	dr1	dr2	ra	dec	mean_y	mean_z
0	FID	ACIS-S-2	7.11	2436	-0.025	-0.009	0.006	0.010	0.000000	0.000000	-754.99	-1725.86
1	FID	ACIS-S-4	7.20	2435	-0.034	0.014	0.005	0.009	0.000000	0.000000	2158.01	182.15
2	FID	ACIS-S-5	7.24	2435	0.028	0.003	0.006	0.010	0.000000	0.000000	-1807.13	176.34
3	GUIDE	402921528	8.15	4870	0.057	-0.013	0.054	0.087	251.380069	39.383044	-2268.17	129.92
4	GUIDE	402920824	9.54	4872	-0.055	-0.012	0.094	0.153	250.008594	39.833340	1705.88	1269.73
5	GUIDE	402924200	9.43	4868	0.071	-0.093	0.094	0.151	250.233038	39.972708	1536.97	490.70
6	GUIDE	402916000	9.99	4842	-0.123	0.103	0.114	0.177	250.243765	40.282386	2212.10	-396.76
7	GUIDE	402403488	8.66	4870	0.049	0.012	0.064	0.102	251.156604	39.143387	-2334.93	1191.93

2.4 Star Slots

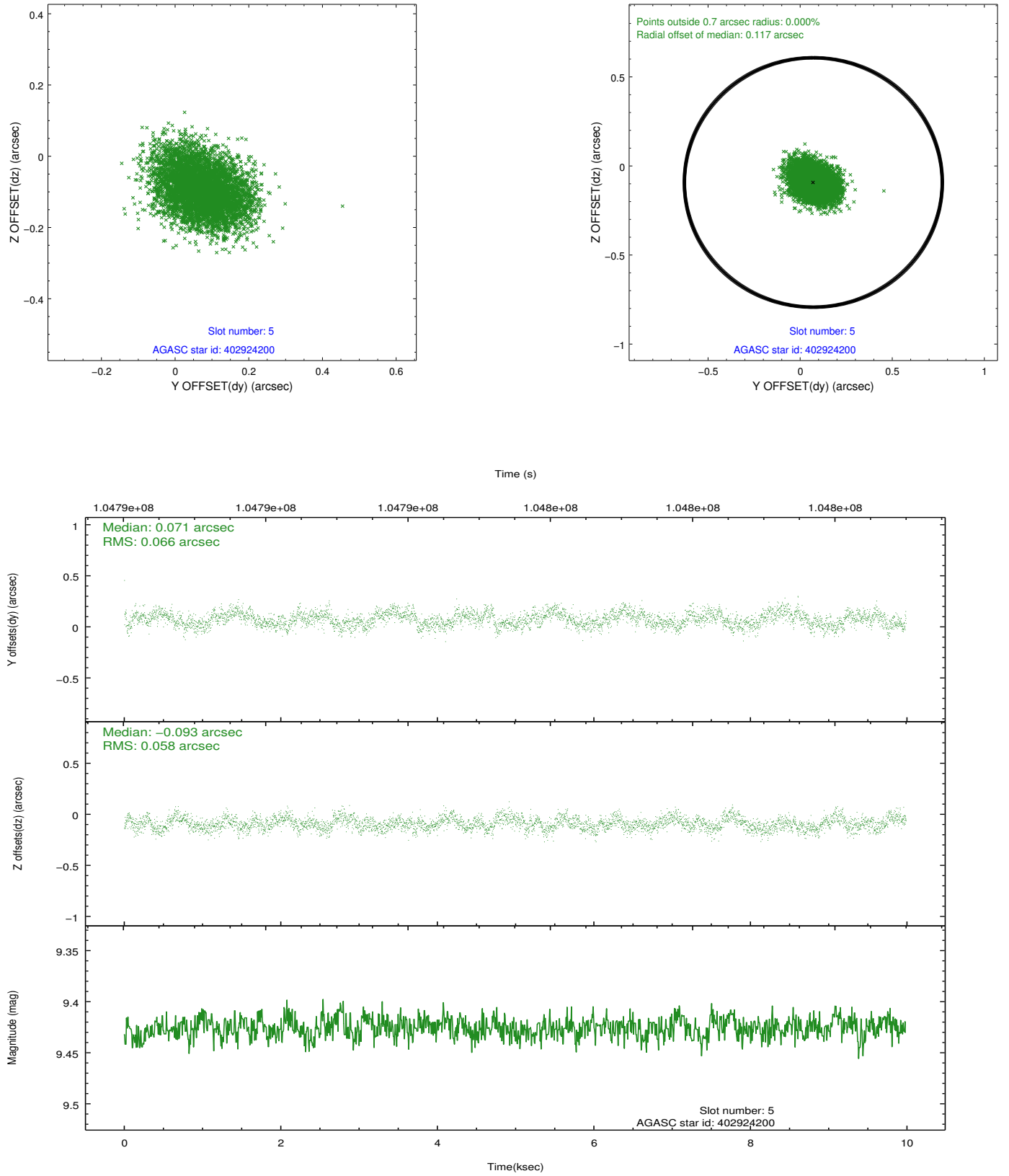
2.4.1 Slot 3



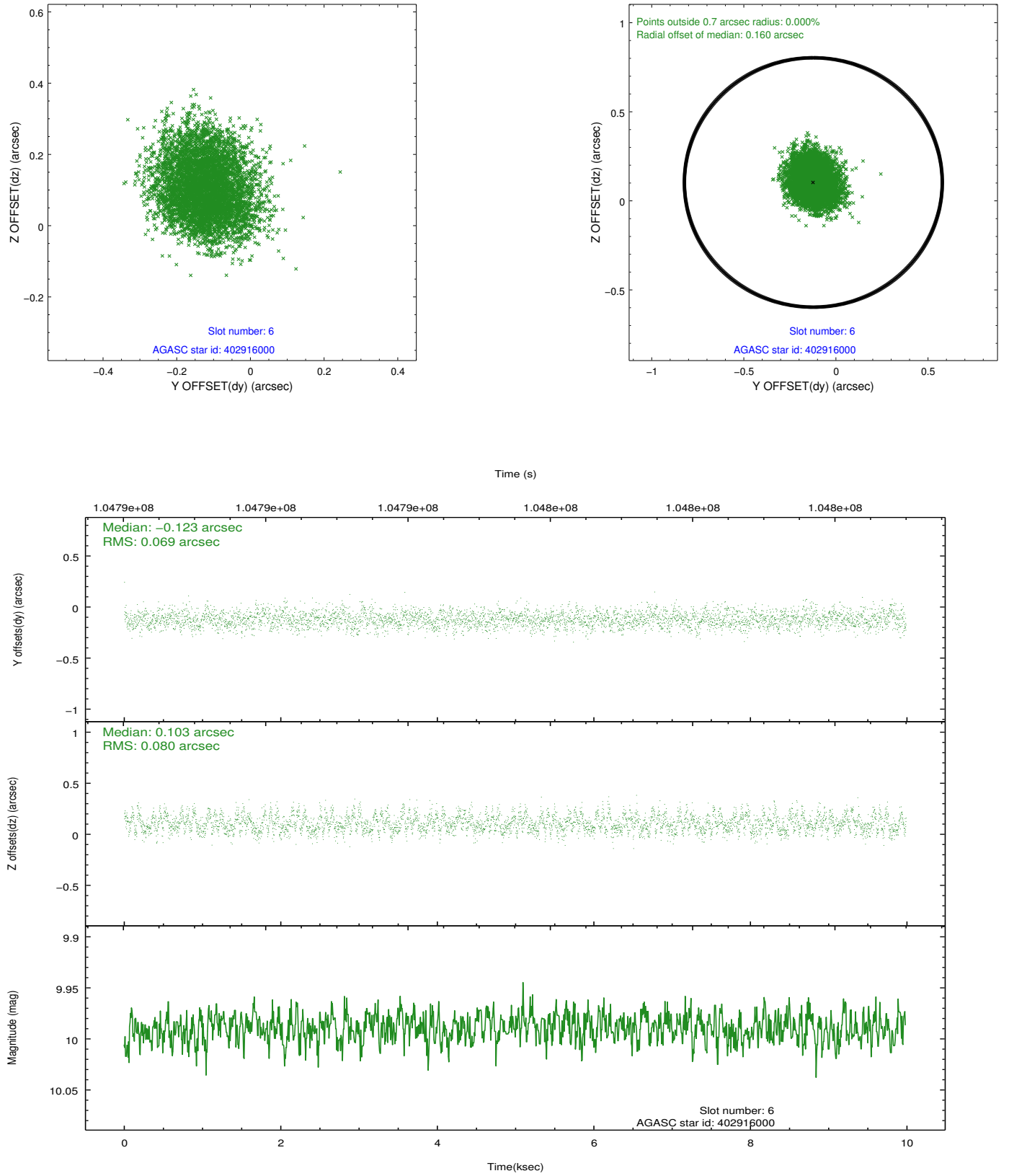
2.4.2 Slot 4



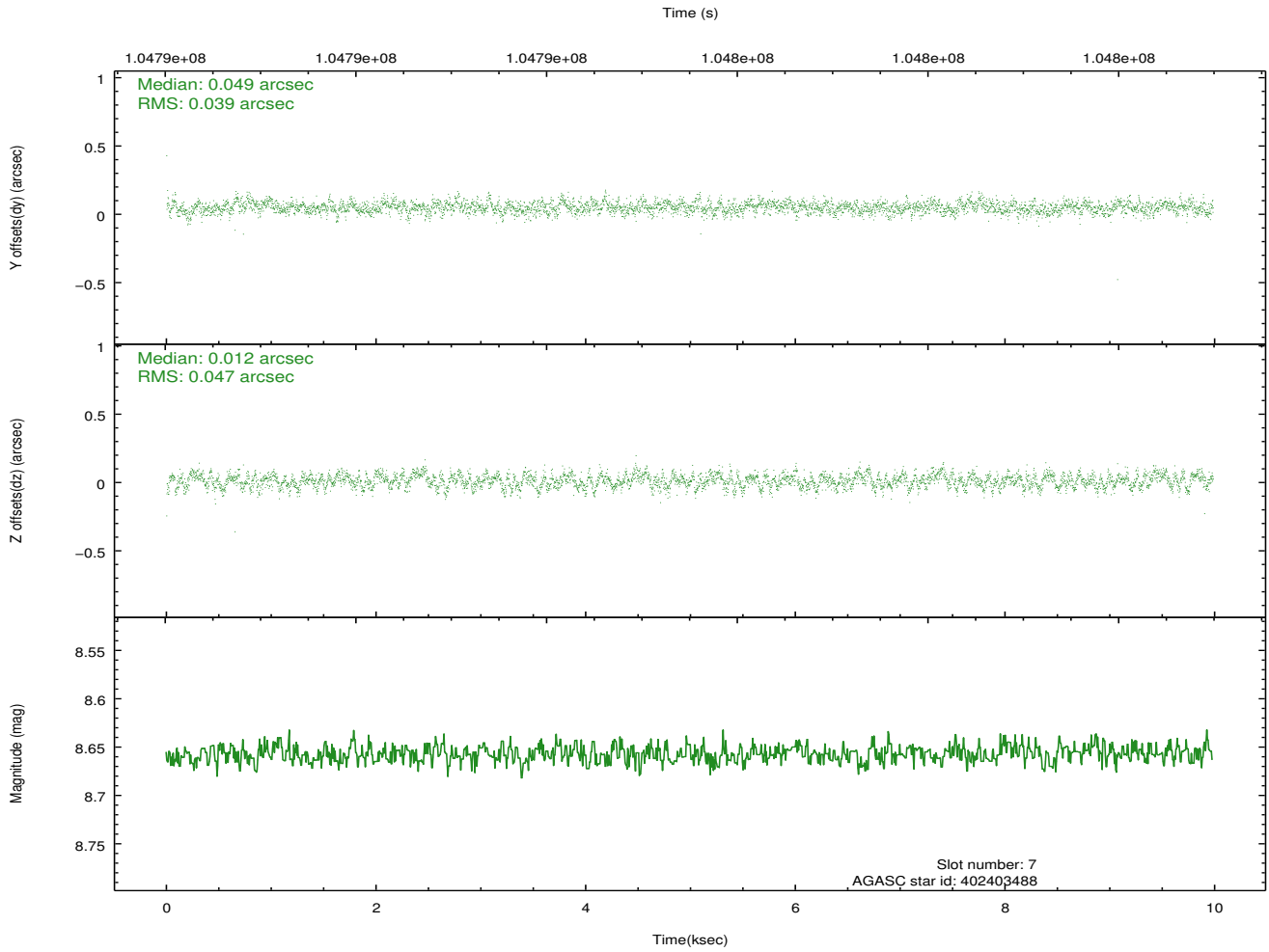
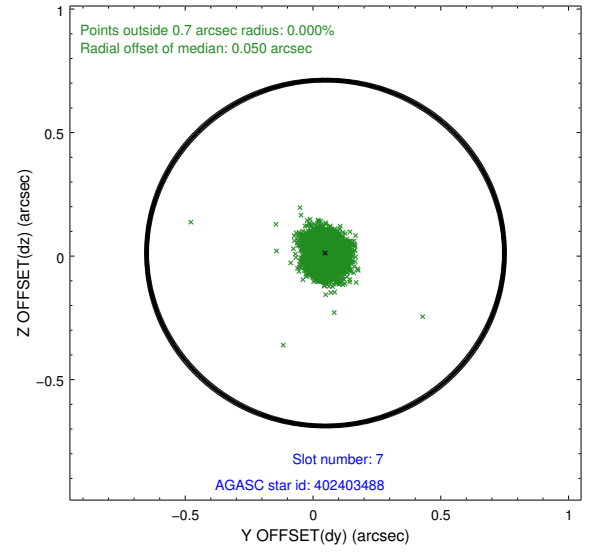
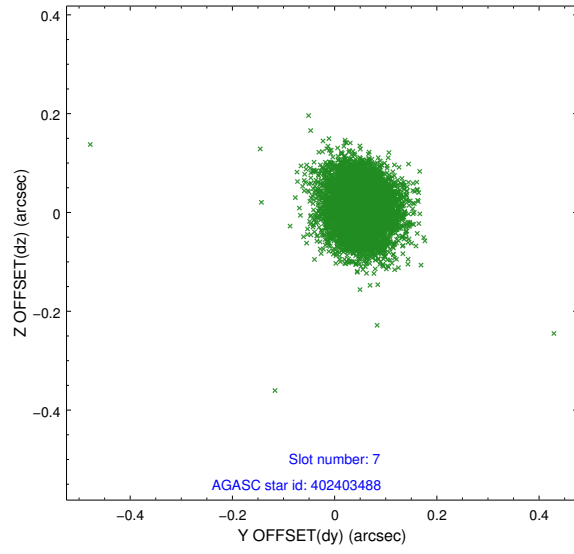
2.4.3 Slot 5



2.4.4 Slot 6

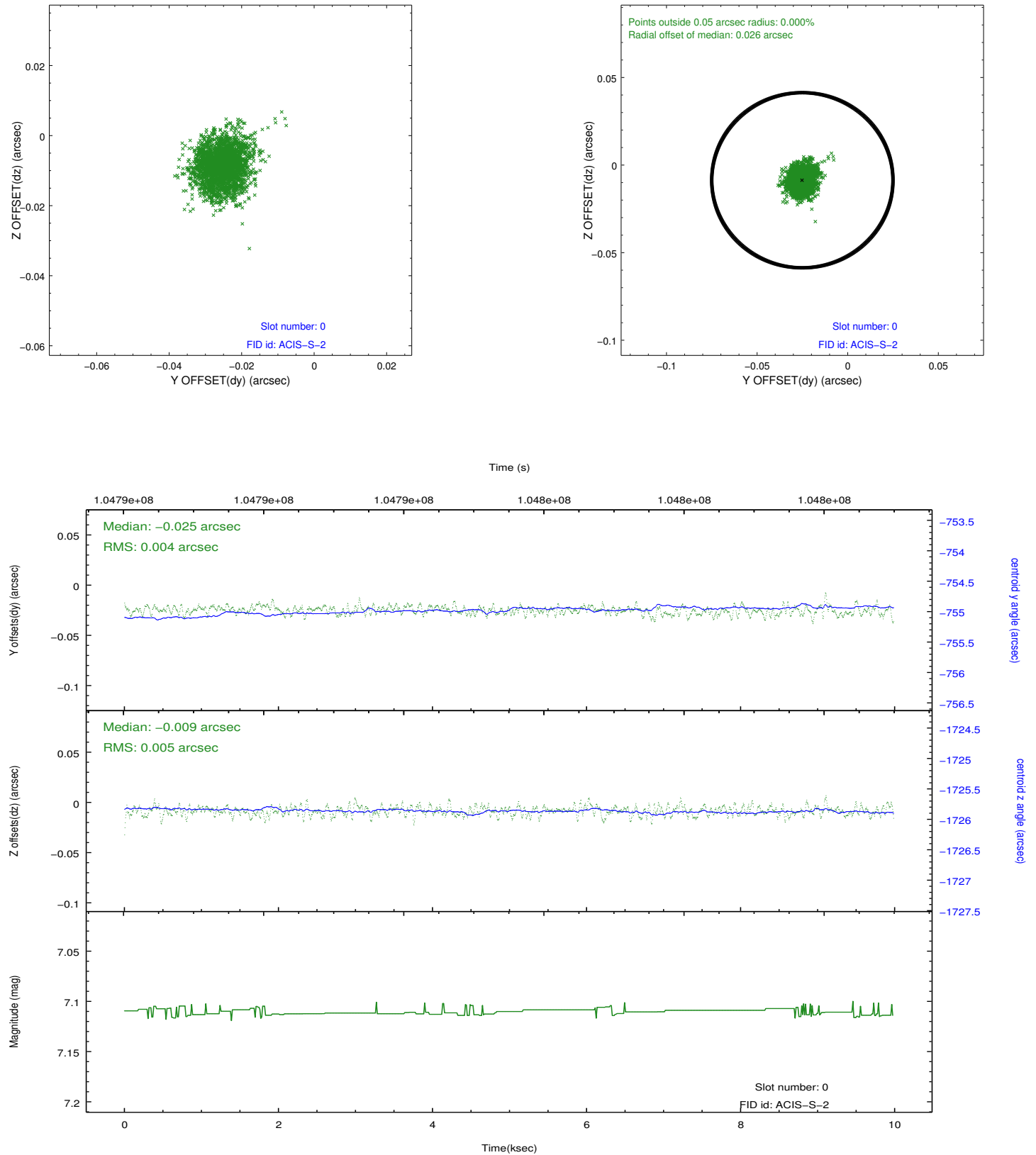


2.4.5 Slot 7

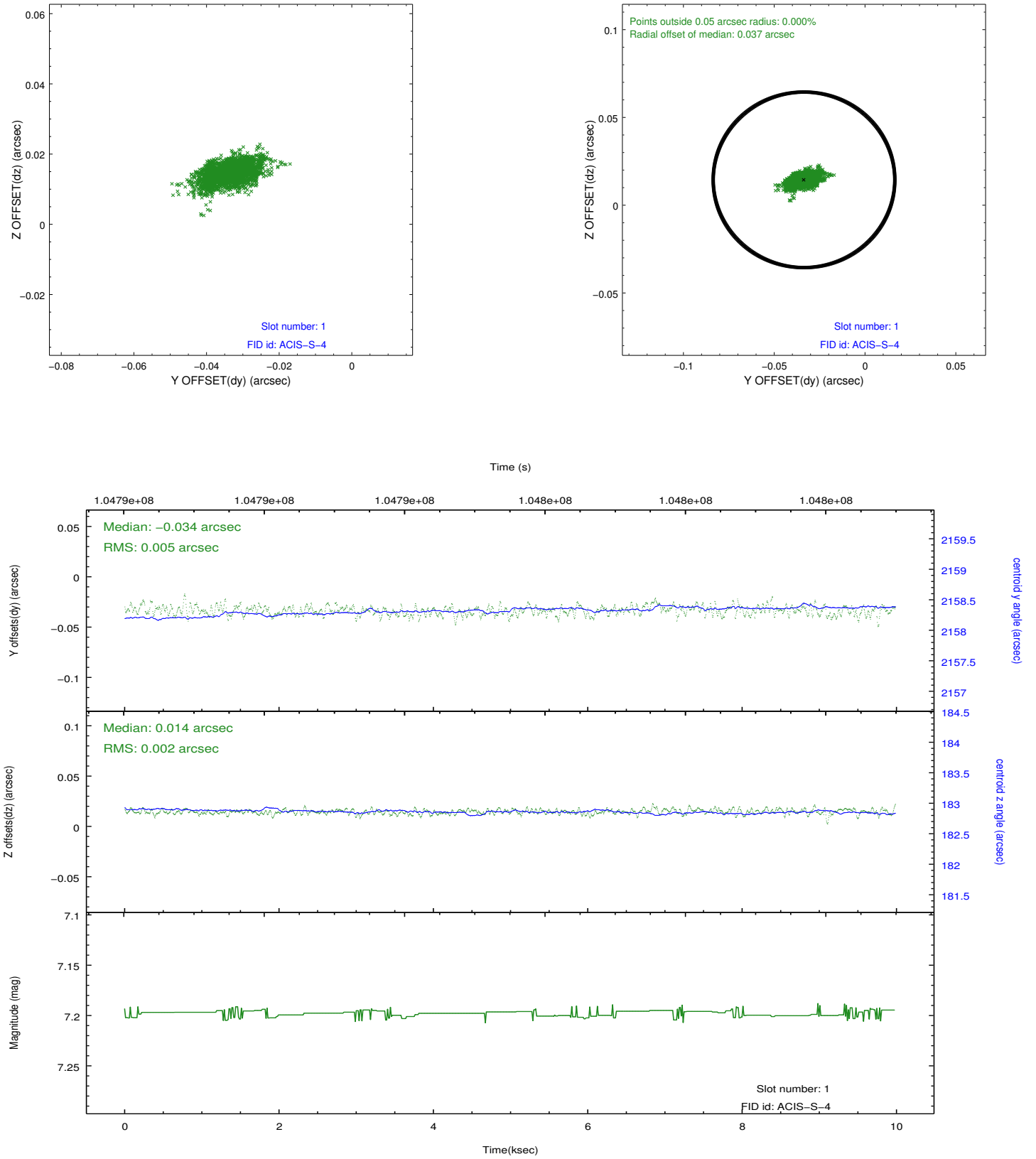


2.5 FID Slots

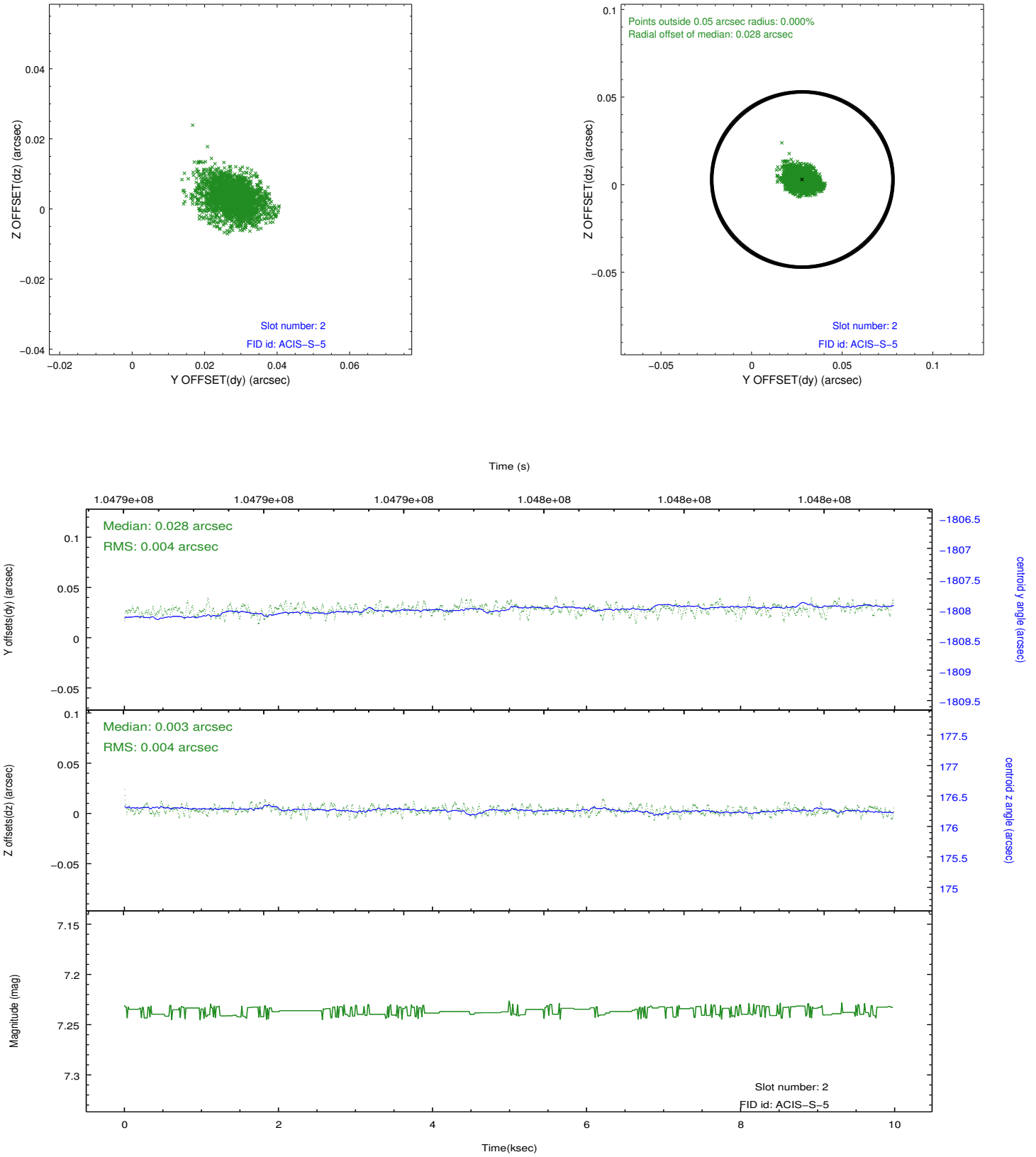
2.5.1 Slot 0



2.5.2 Slot 1



2.5.3 Slot 2



A Summary

A.1 Status

V&V Scientist	Jen Lauer
V&V Date (YYYY-MM-DD)	2012.09.18
V&V Edition	1
V&V Disposition and Status	OK
V&V Charge Time	9.984

A.2 Comments

Roll constraint met.