

V&V Reference Report

L2 ASCDS Version : 7.6.9

Observation 2143 - L2 Version 001
Chandra X-Ray Center

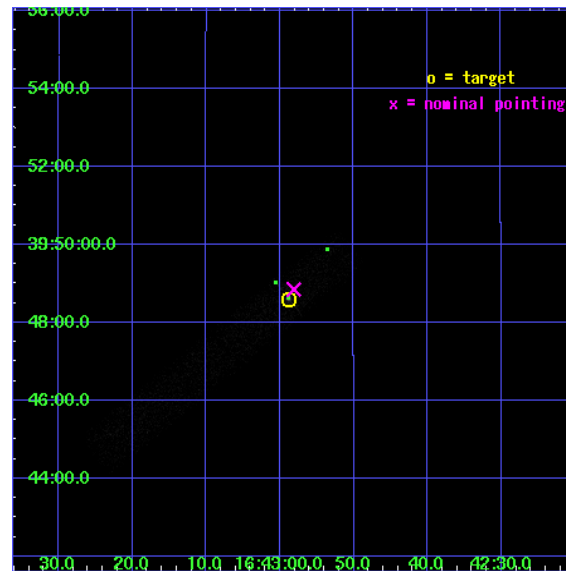
L2 Processing Date : Nov 29 2006

Contents

| | | |
|----------|-------------------------------|-----------|
| 1 | Front | 2 |
| 2 | OBI | 3 |
| 2.1 | OBI | 3 |
| 2.1.1 | Images | 3 |
| 2.1.2 | Bias | 3 |
| 2.1.3 | Parameters | 4 |
| 2.1.4 | Events | 4 |
| 2.2 | Compared Parameters | 5 |
| 2.3 | Aspect | 6 |
| 2.4 | Star Slots | 9 |
| 2.4.1 | Slot 3 | 9 |
| 2.4.2 | Slot 4 | 10 |
| 2.4.3 | Slot 5 | 11 |
| 2.4.4 | Slot 6 | 12 |
| 2.4.5 | Slot 7 | 13 |
| 2.5 | FID Slots | 14 |
| 2.5.1 | Slot 0 | 14 |
| 2.5.2 | Slot 1 | 15 |
| 2.5.3 | Slot 2 | 16 |
| 3 | Point Sources | 17 |
| A | Summary | 18 |
| A.1 | Status | 18 |
| A.2 | Comments | 18 |

1 Front

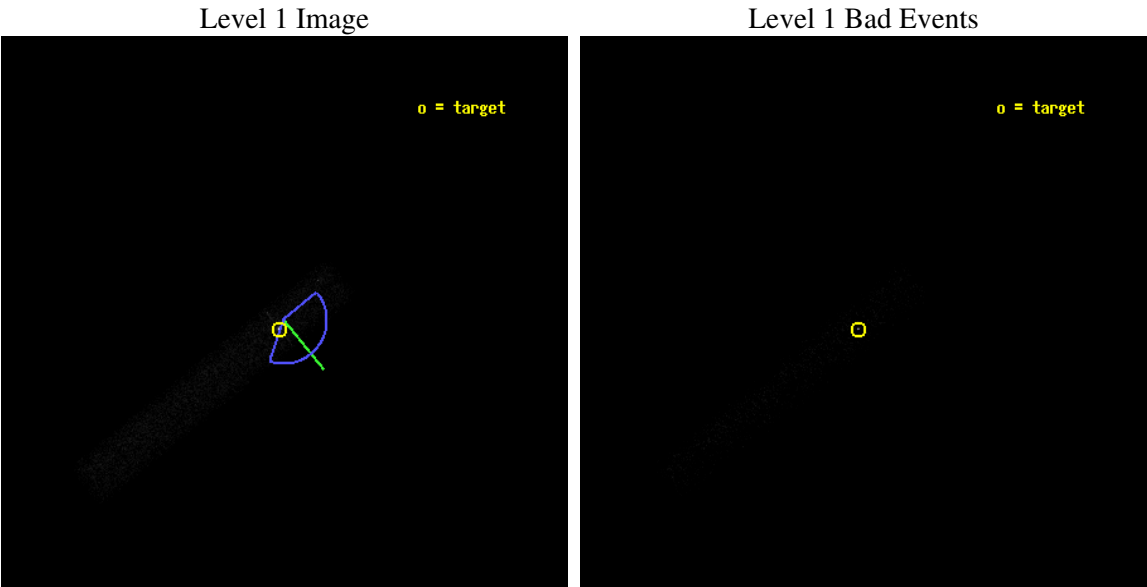
| | |
|----------|--|
| seq_num | 700333 |
| obs_id | 2143 |
| title | AN UNBIASED SURVEY OF X-RAY AND OPTICAL EMISSION FROM EXTENDED RADIO JETS IN AGN |
| observer | Dr. Rita Sambruna |
| object | 1641+399 |
| dtcycle | 0 |
| cycle | P |
| ra_targ | 250.745 |
| dec_targ | 39.810278 |
| ra_nom | 250.74220883991 |
| dec_nom | 39.814215858091 |
| roll_nom | 141.04098564428 |
| revision | 2 |
| ontime | 9984.8001487851 |
| livetime | 9055.6866939825 |
| ontime7 | 9984.8001487851 |
| l2events | 12482 |



2 OBI

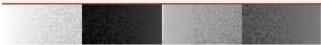
2.1 OBI

2.1.1 Images



2.1.2 Bias

Chip 7



2.1.3 Parameters

| | |
|----------|---------------------|
| obi_num | 2 |
| ascdsver | 7.6.9 |
| caldbver | 3.2.4 |
| date | 2006-11-29T11:55:31 |
| revision | 2 |

| | |
|----------------|-----------------|
| sched_exp_time | 9400.000000 |
| ontime | 10248.324467421 |
| ontime7 | 10248.324467421 |
| l1events | 20364 |

2.1.4 Events

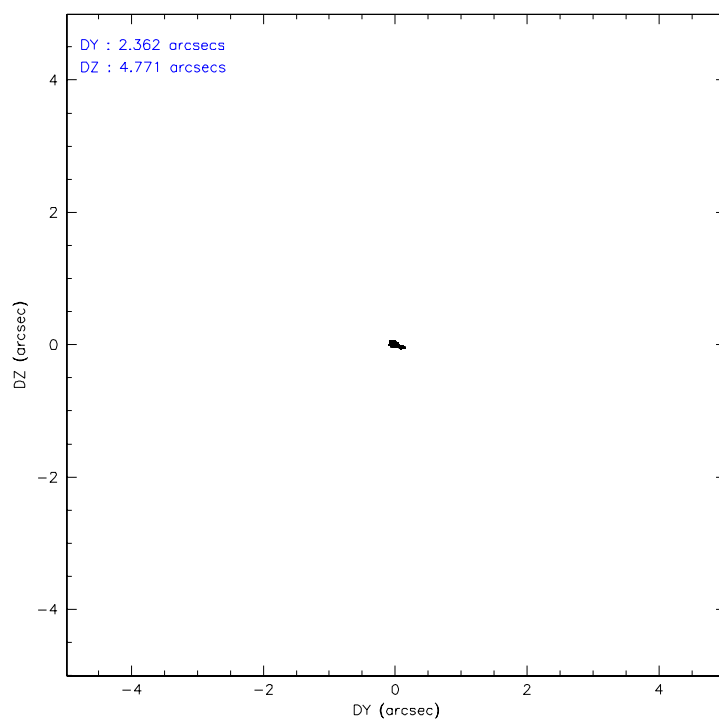
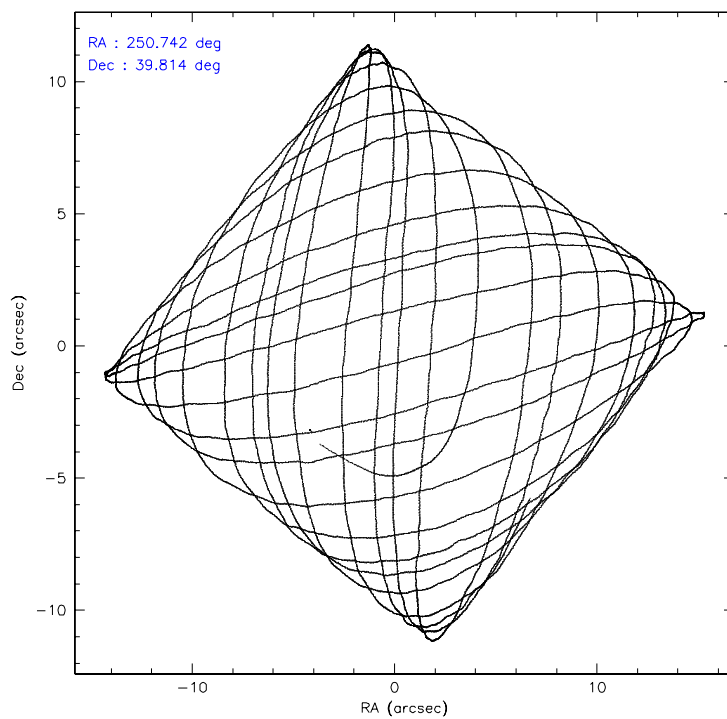
| | |
|-----------------|--------------|
| | ccd 7 |
| level 1 events | 20364 |
| rejected events | 7316 |
| rejected % | 35% |

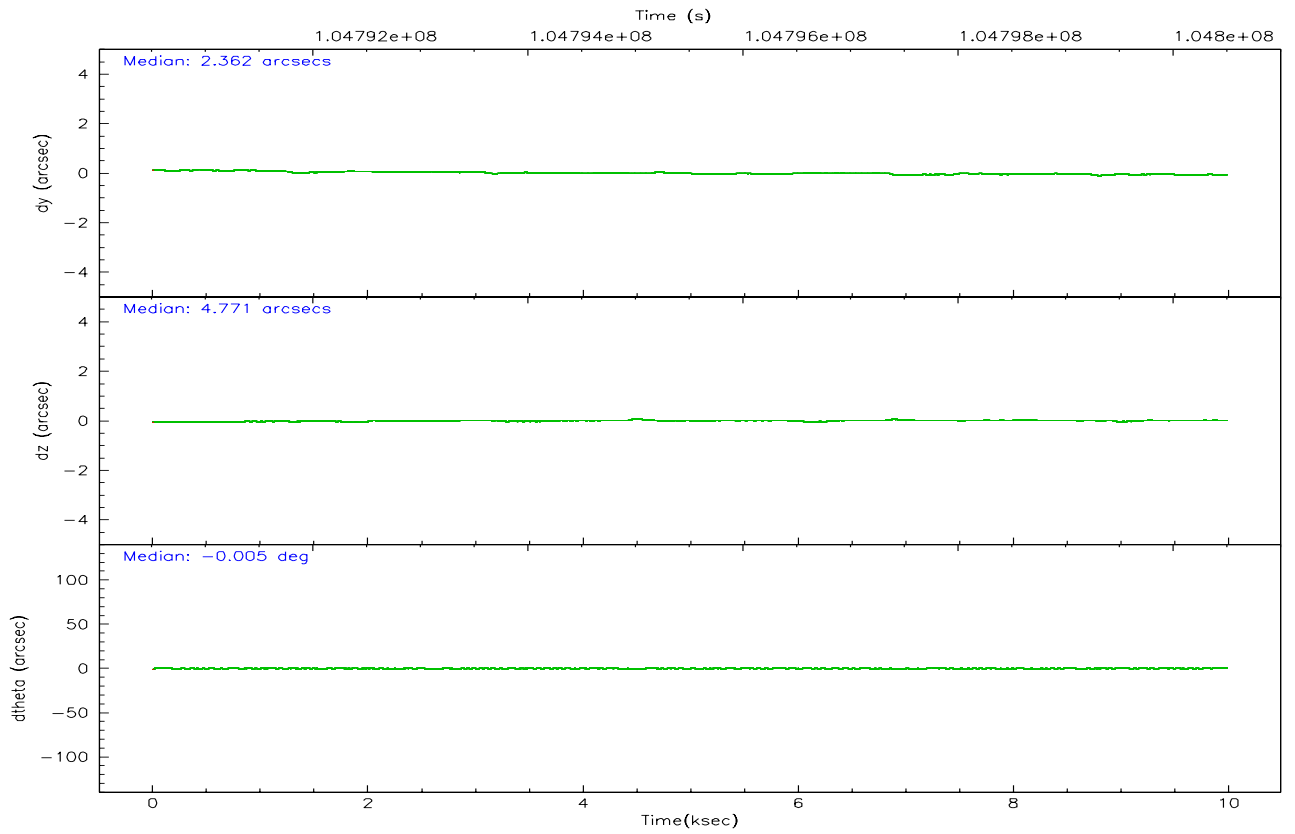
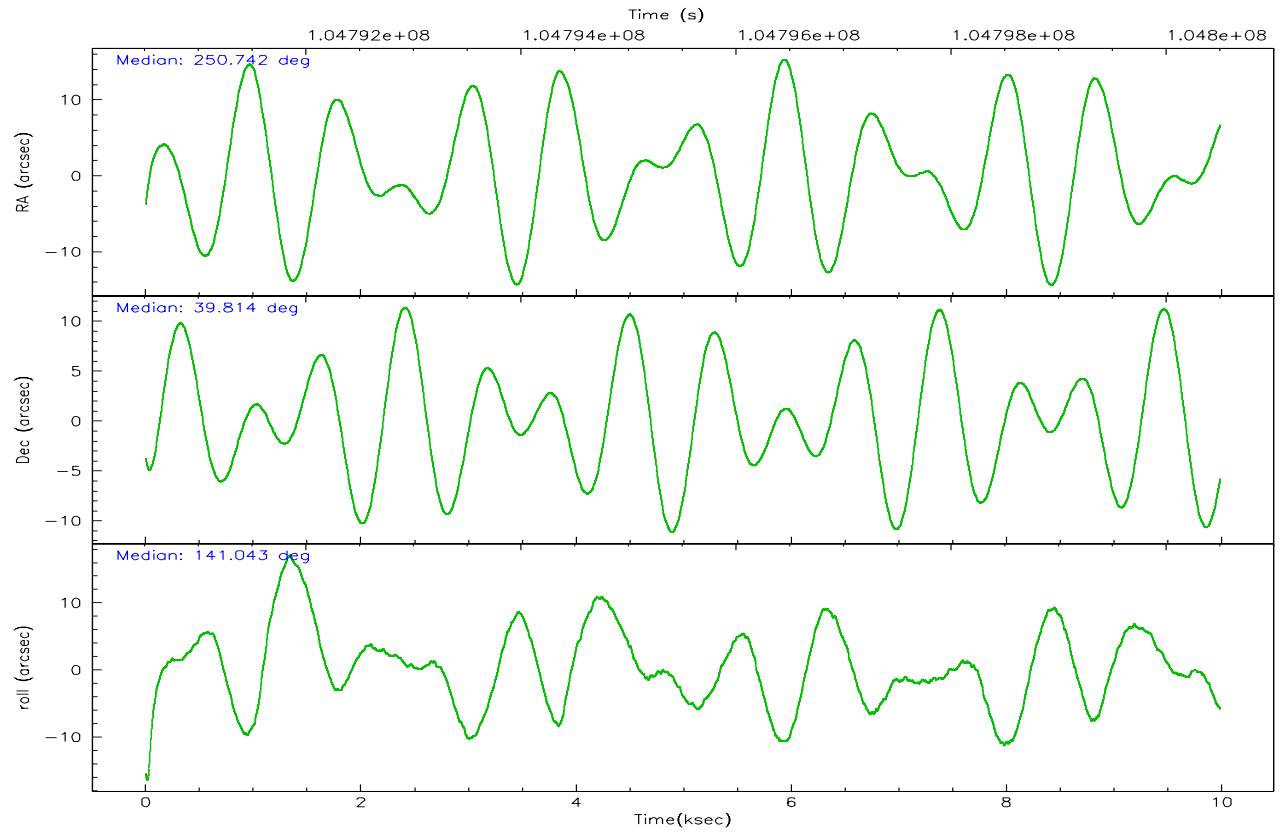
| | |
|----------------|--------------|
| | ccd 7 |
| grade 0 events | 3061 |
| | 15% |
| grade 1 events | 79 |
| | 0% |
| grade 2 events | 3122 |
| | 15% |
| grade 3 events | 1469 |
| | 7% |
| grade 4 events | 1428 |
| | 7% |
| grade 5 events | 1081 |
| | 5% |
| grade 6 events | 4201 |
| | 20% |
| grade 7 events | 5923 |
| | 29% |

2.2 Compared Parameters

| Parameter | Planned | Actual | Parameter | Planned | Actual |
|--------------------------------------|---------------------|----------------------|---------------------------------------|-----------|---------|
| Instrument | ACIS | ACIS | Obspar format version number | 6 | 6 |
| Detector | ACIS-7 | ACIS-7 | Obspar file type | PREDICTED | ACTUAL |
| Grating | NONE | NONE | Obspar update status | NONE | UPDATED |
| Data mode | FAINT | FAINT | Number of optional ACIS chips dropped | 0 | 0 |
| Observation mode | POINTING | POINTING | On-chip summing requested | N | N |
| Pointing RA | 250.777387 | 250.7422088399119 | Subarray requested | 1/8 | 1/8 |
| Pointing Dec | 39.810225 | 39.81421585809063 | Subarray start row | 0 | 449 |
| Pointing Roll | 140.861848 | 141.0409856442785 | Subarray row count | 1024 | 128 |
| Roll angle | 125.000000 | 125.000000 | Alternating exposures requested | N | N |
| Roll tolerance | 74.000000 | 74.000000 | Primary exposure time | 0.000000 | 0.4 |
| Roll constraint allows 180D rotation | N | N | | | |
| SIM focus pos (mm) | -0.684267 | -0.6828225247311905 | | | |
| SIM defocus (mm) | 0 | 0.001444936568705701 | | | |
| SIM translation stage pos (mm) | -190.132523 | -190.1425803651734 | | | |
| SIM translation stage offset (mm) | 0 | 0.01005778216563158 | | | |
| Observation start time | 104791102.184000 | 104789942.32841 | | | |
| Observation start date | 2001-04-27T20:37:18 | 2001-04-27T20:19:02 | | | |
| Observation end time | 104800502.184000 | 104801107.14135 | | | |
| Observation end date | 2001-04-27T23:13:58 | 2001-04-27T23:25:07 | | | |
| Read mode | TIMED | TIMED | | | |

2.3 Aspect



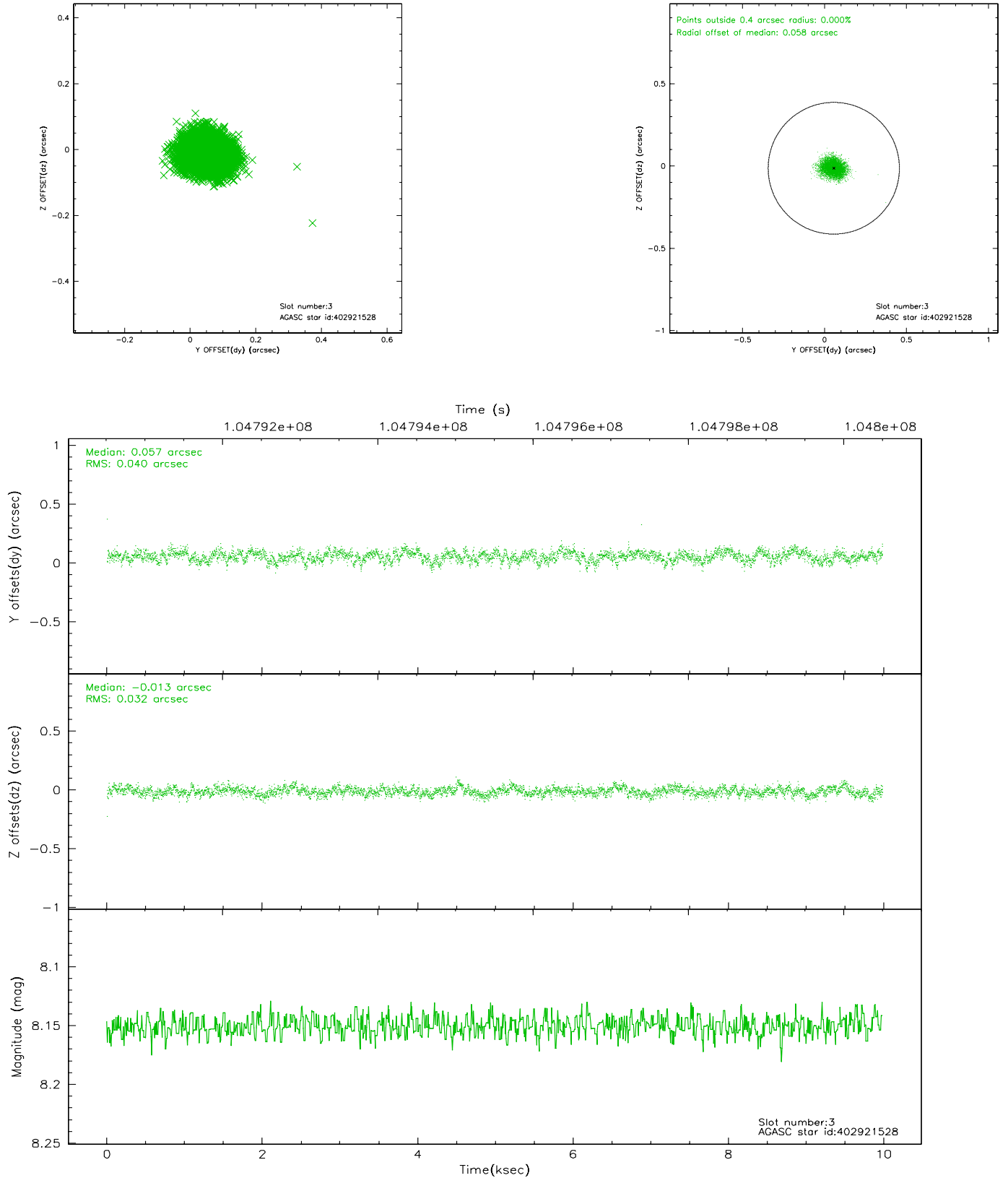


Slot Statistics

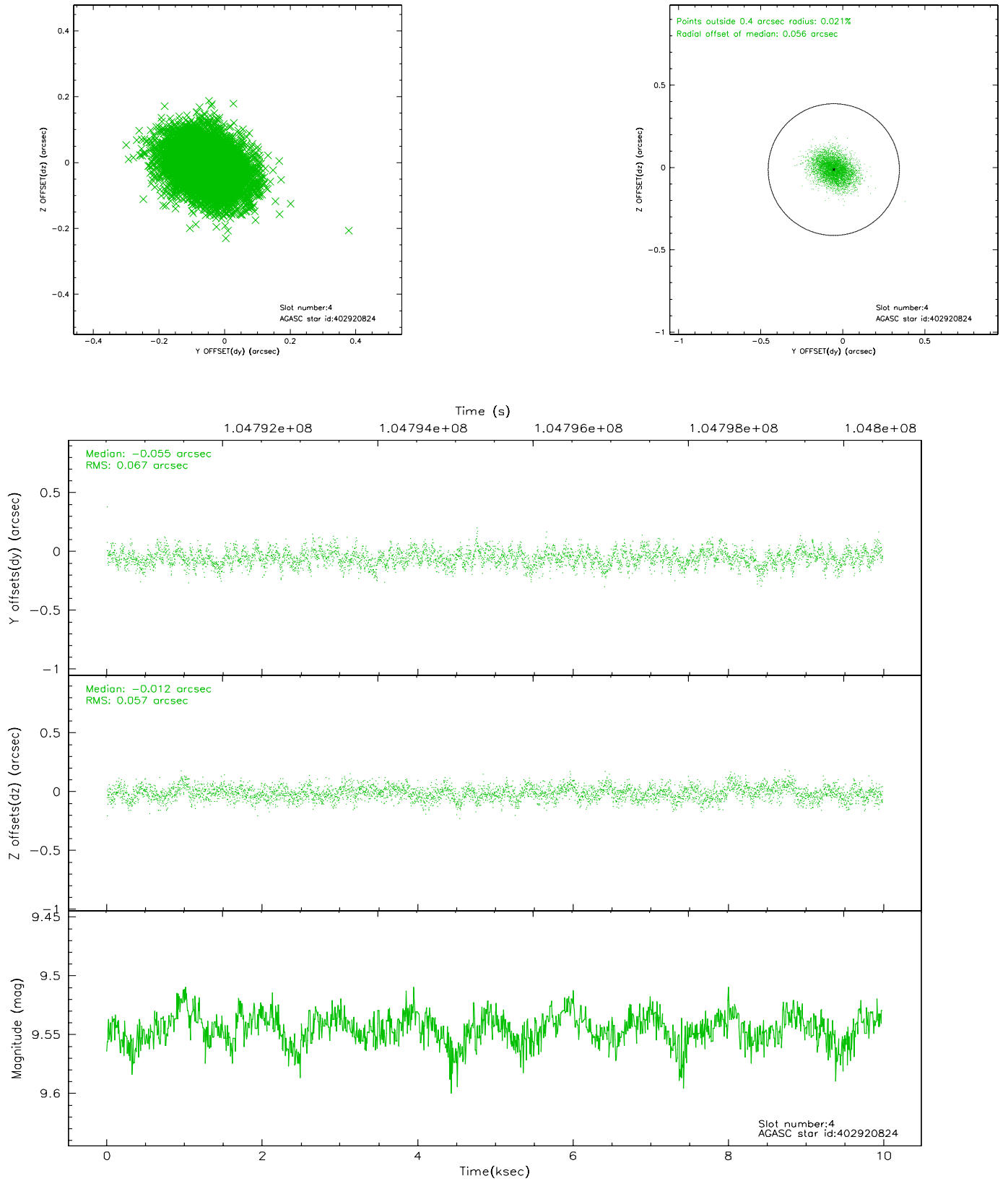
| slot | status | id | mag | n_pts | med_dy | med_dz | dr1 | dr2 | ra | dec | mean_y | mean_z |
|------|--------|-----------|------|-------|--------|--------|-------|-------|------------|-----------|----------|----------|
| 0 | FID | ACIS-S-2 | 7.11 | 2436 | -0.014 | 0.015 | 0.006 | 0.010 | 0.000000 | 0.000000 | -754.97 | -1725.82 |
| 1 | FID | ACIS-S-4 | 7.20 | 2435 | -0.076 | 0.003 | 0.005 | 0.008 | 0.000000 | 0.000000 | 2157.97 | 182.16 |
| 2 | FID | ACIS-S-5 | 7.24 | 2435 | 0.059 | -0.009 | 0.006 | 0.010 | 0.000000 | 0.000000 | -1807.09 | 176.35 |
| 3 | GUIDE | 402921528 | 8.15 | 4870 | 0.057 | -0.013 | 0.054 | 0.087 | 251.380069 | 39.383044 | -2268.17 | 129.92 |
| 4 | GUIDE | 402920824 | 9.54 | 4872 | -0.055 | -0.012 | 0.094 | 0.153 | 250.008594 | 39.833340 | 1705.88 | 1269.73 |
| 5 | GUIDE | 402924200 | 9.43 | 4868 | 0.071 | -0.093 | 0.094 | 0.151 | 250.233038 | 39.972708 | 1536.97 | 490.70 |
| 6 | GUIDE | 402916000 | 9.99 | 4842 | -0.123 | 0.103 | 0.114 | 0.177 | 250.243765 | 40.282386 | 2212.10 | -396.76 |
| 7 | GUIDE | 402403488 | 8.66 | 4870 | 0.049 | 0.012 | 0.064 | 0.102 | 251.156604 | 39.143387 | -2334.93 | 1191.93 |

2.4 Star Slots

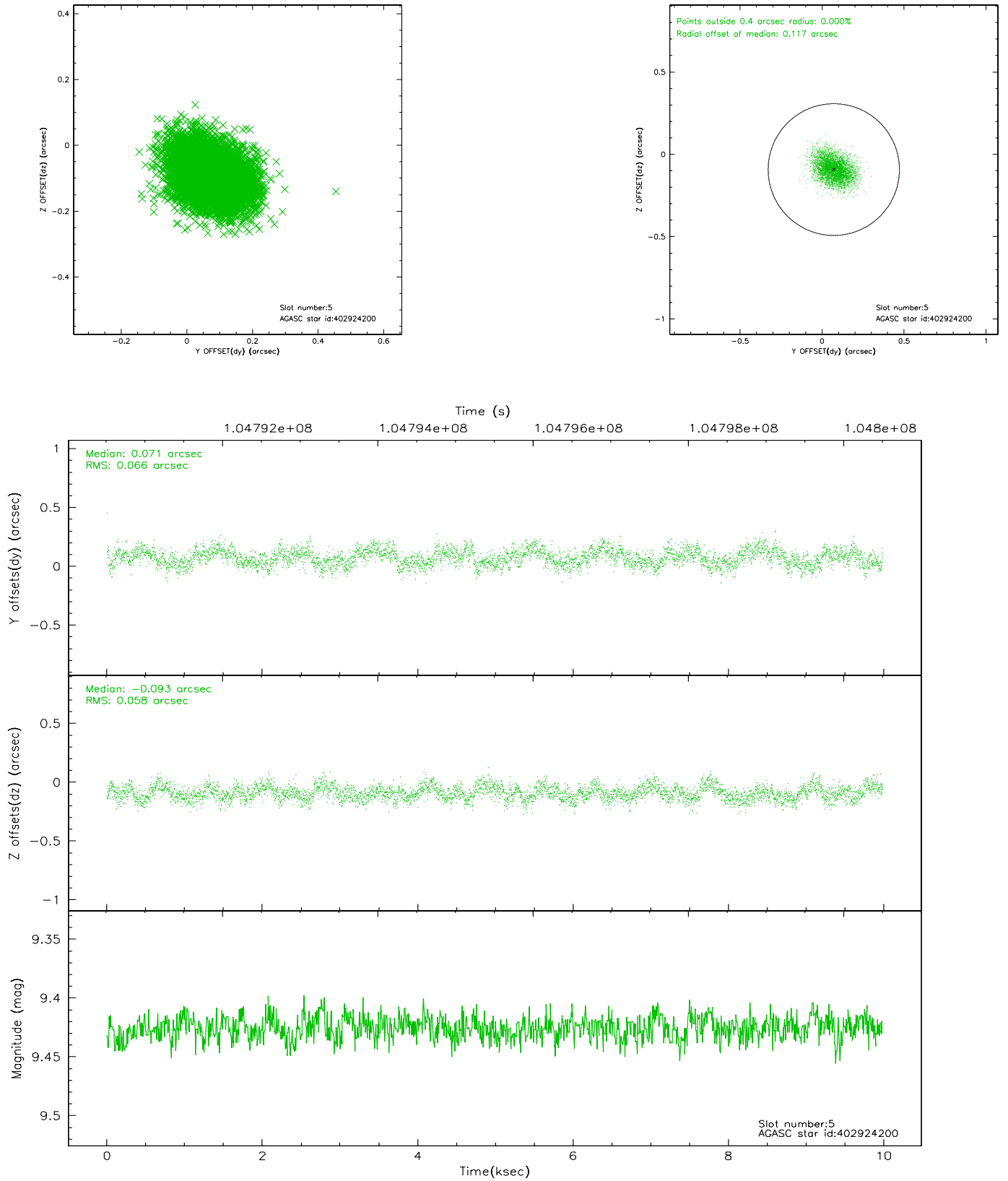
2.4.1 Slot 3



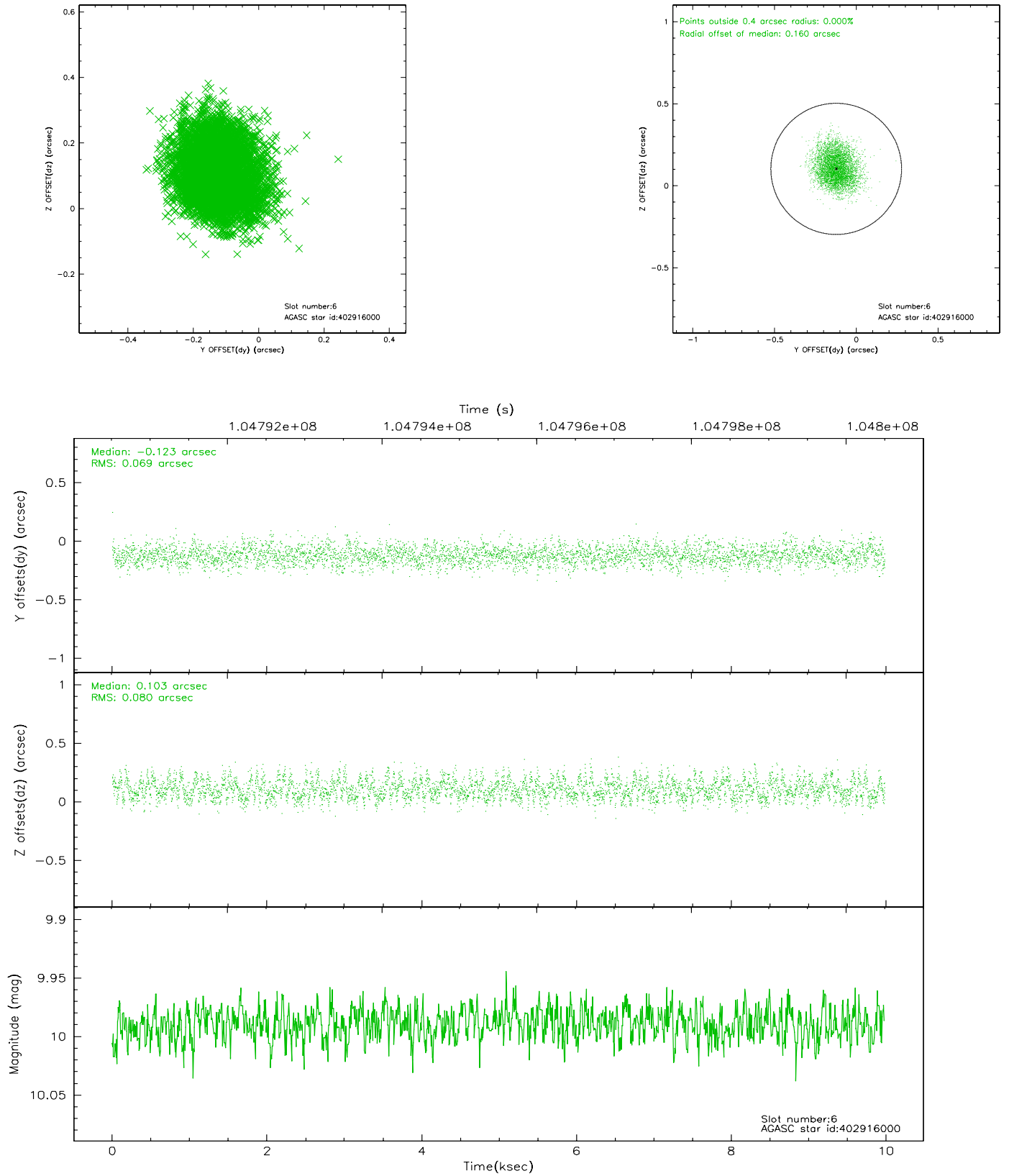
2.4.2 Slot 4



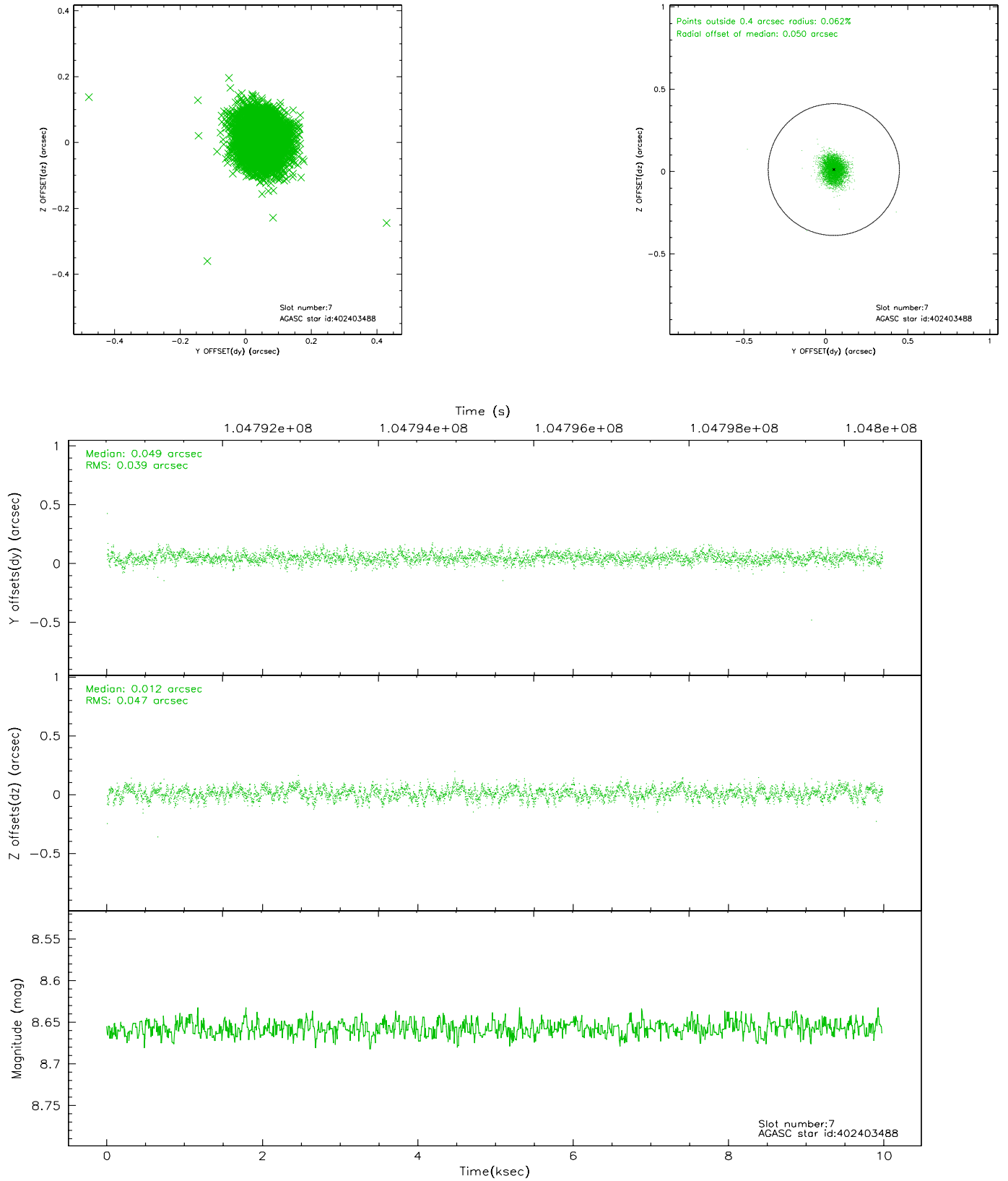
2.4.3 Slot 5



2.4.4 Slot 6

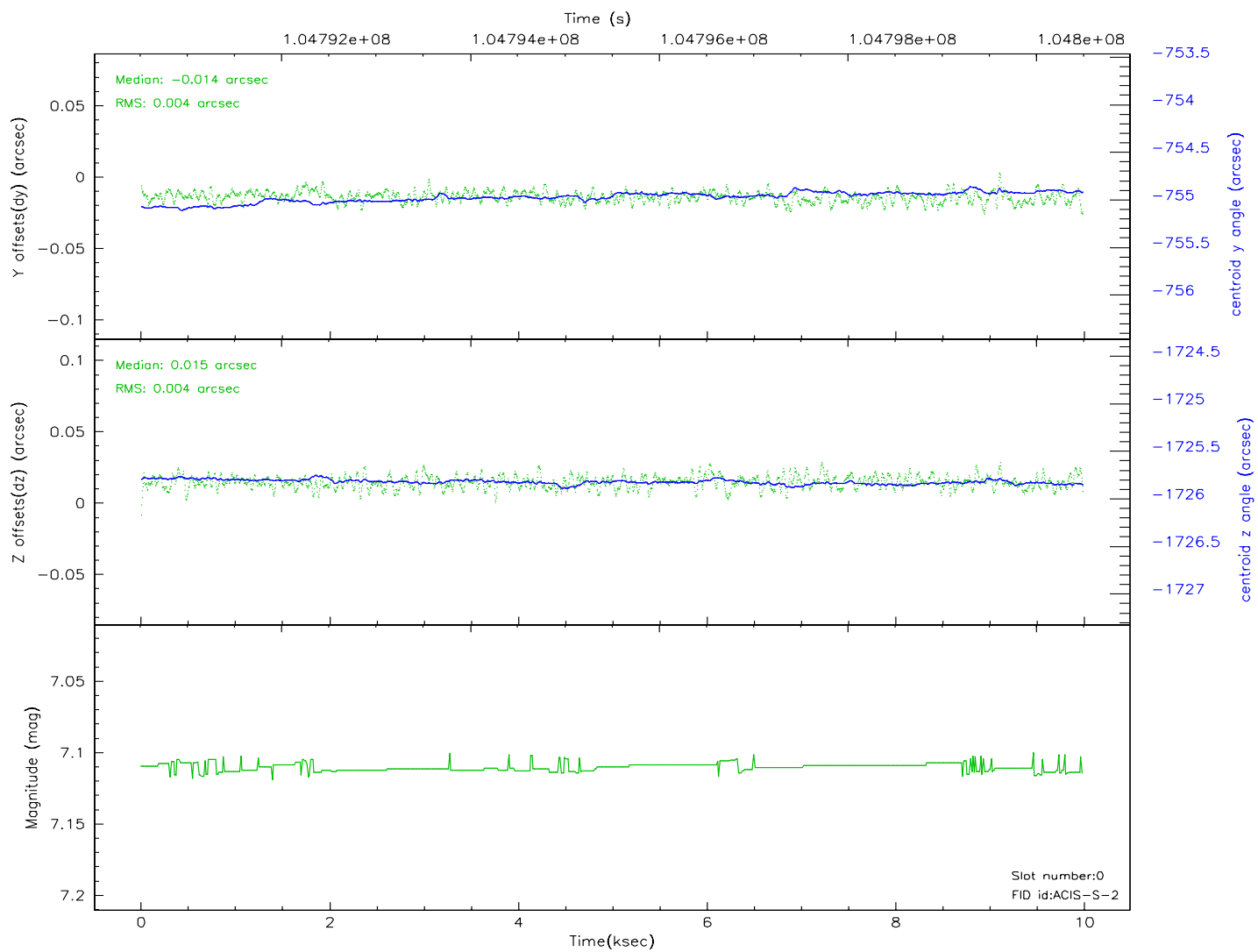
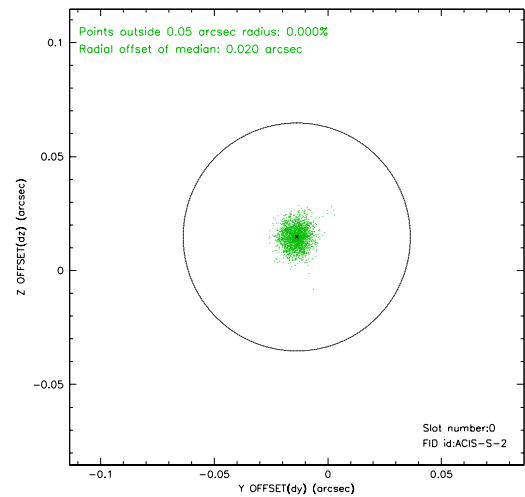
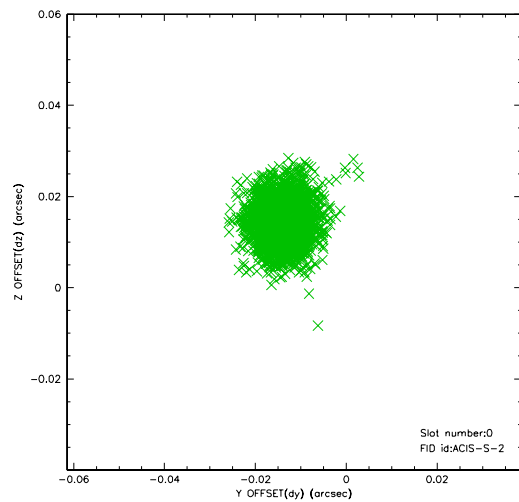


2.4.5 Slot 7

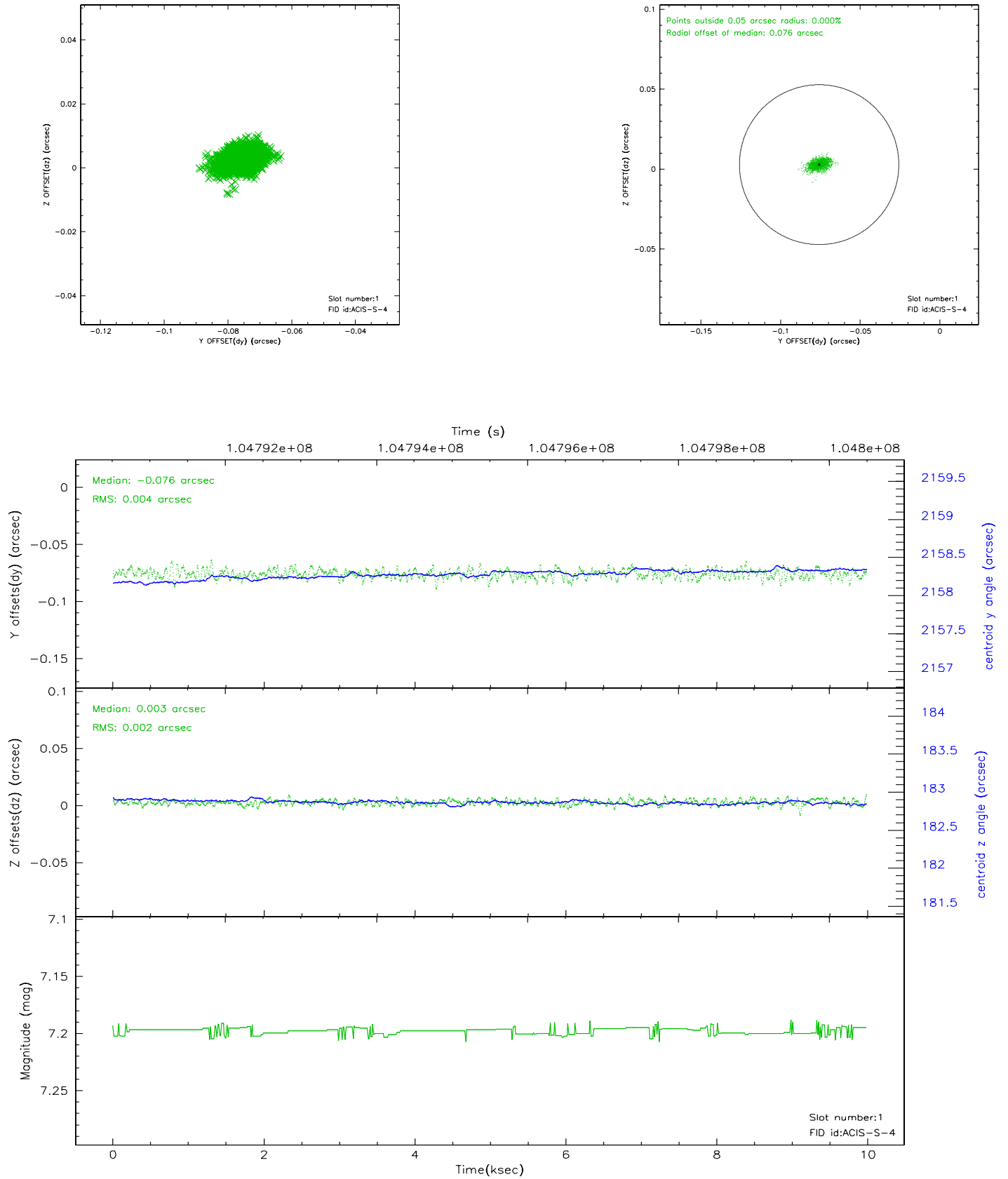


2.5 FID Slots

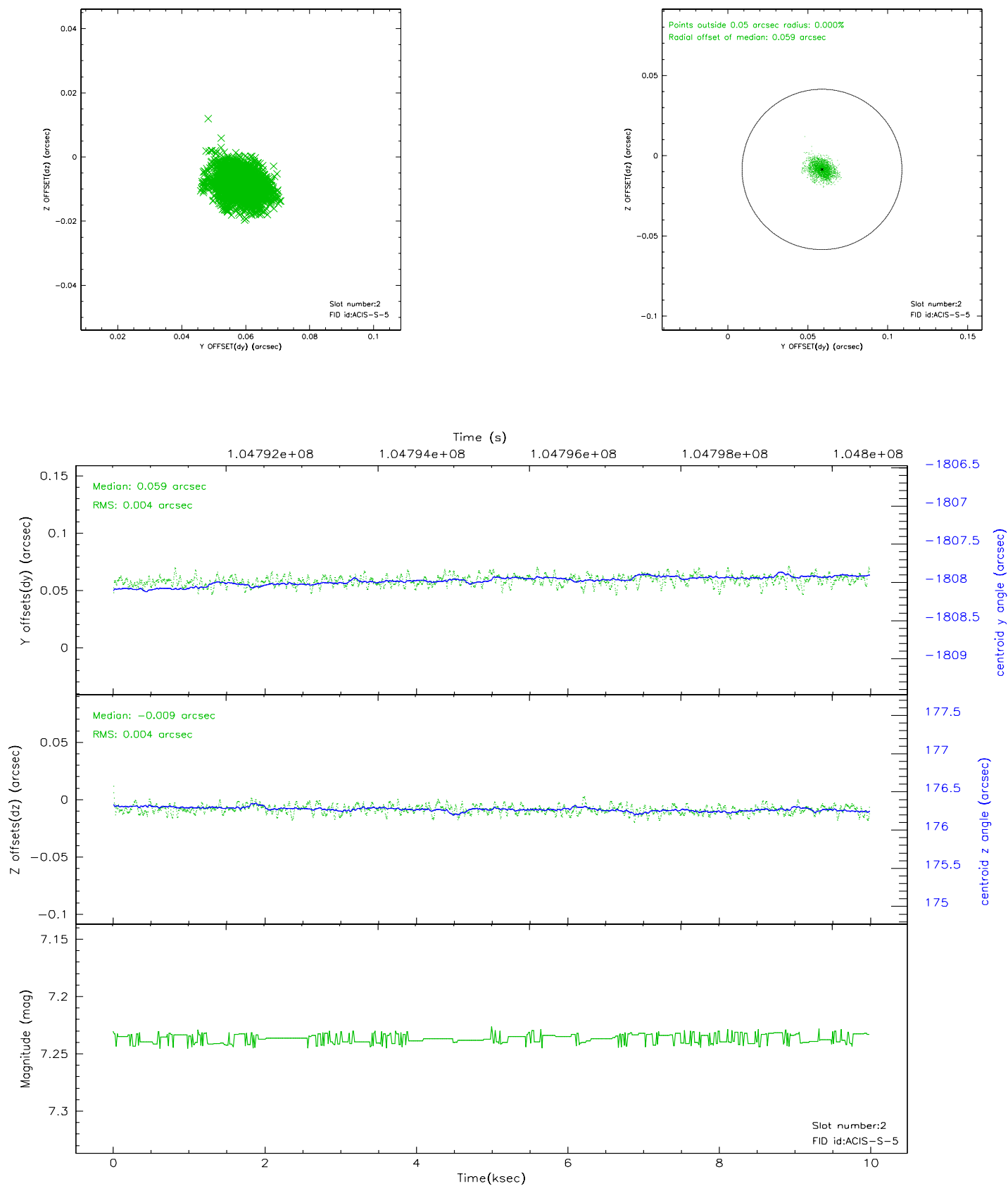
2.5.1 Slot 0



2.5.2 Slot 1



2.5.3 Slot 2



3 Point Sources

A Summary

A.1 Status

| | |
|----------------------------|------------|
| V&V Scientist | Jen Lauer |
| V&V Date (YYYY-MM-DD) | 2006.11.29 |
| V&V Edition | 1 |
| V&V Disposition and Status | OK |
| V&V Charge Time | 9.984 |

A.2 Comments

Roll constraint met.