

V&V Reference Report

L2 ASCDS Version : 8.4.5

Observation 2103 - L2 Version 3
Chandra X-Ray Center

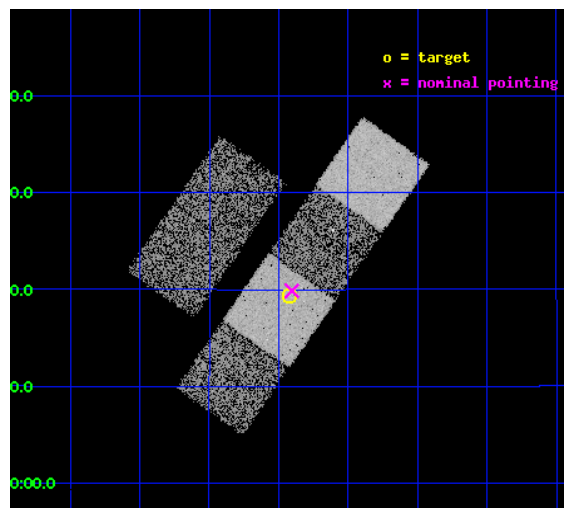
L2 Processing Date : Oct 3 2012

Contents

1	Front	2
2	OBI	3
2.1	OBI	3
2.1.1	Images	3
2.1.2	Bias	3
2.1.3	Parameters	4
2.1.4	Events	4
2.2	Compared Parameters	5
2.3	Aspect	6
2.4	Star Slots	9
2.4.1	Slot 3	9
2.4.2	Slot 4	10
2.4.3	Slot 5	11
2.4.4	Slot 6	12
2.4.5	Slot 7	13
2.5	FID Slots	14
2.5.1	Slot 0	14
2.5.2	Slot 1	15
2.5.3	Slot 2	16
A	Summary	17
A.1	Status	17
A.2	Comments	17

1 Front

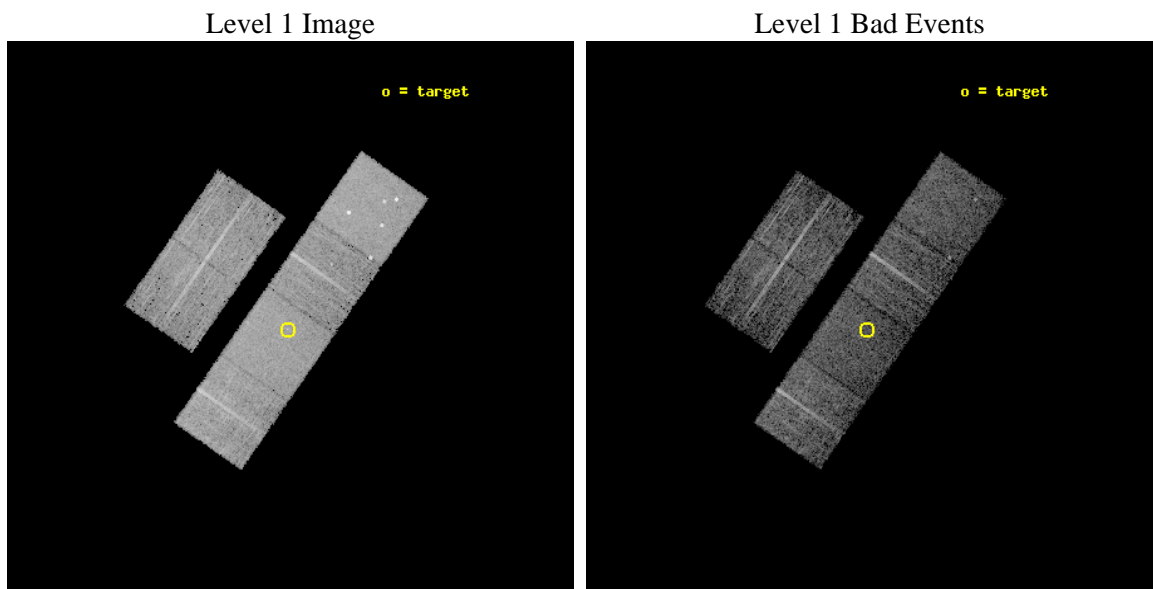
seq_num	700293	Sequence number
obs_id	2103	Observation id
title	PUBLIC OBSERVATIONS OF A WELL-DEFINED SAMPLE OF BAL QSOs FROM THE LARGE BRIGHT QUASAR SURVEY: REMOVING THE BARRIERS	Proposal title
observer	Prof. William Brandt	Principal investigator
object	LBQS 1205+1436	Source name
dtcycle	0	
cycle	P	events from which exps? Prim/Second/Both
ra_targ	182.105417	Observer's specified target RA [deg]
dec_targ	14.322306	Observer's specified target Dec [deg]
ra_nom	182.10122651447	Nominal RA [deg]
dec_nom	14.331114174252	Nominal Dec [deg]
roll_nom	124.86443003074	Nominal Roll [deg]
revision	3	Processing version of data
ontime	5756.8000053465	Sum of GTIs [s]
livetime	5683.90393735	Livetime [s]
ontime2	5756.8000053465	Sum of GTIs [s]
ontime3	5756.6798212379	Sum of GTIs [s]
ontime5	5756.7619012296	Sum of GTIs [s]
ontime6	5756.7208612412	Sum of GTIs [s]
ontime7	5756.8000053465	Sum of GTIs [s]
ontime8	5753.3976913989	Sum of GTIs [s]
l2events	60729	Number of level 2 events



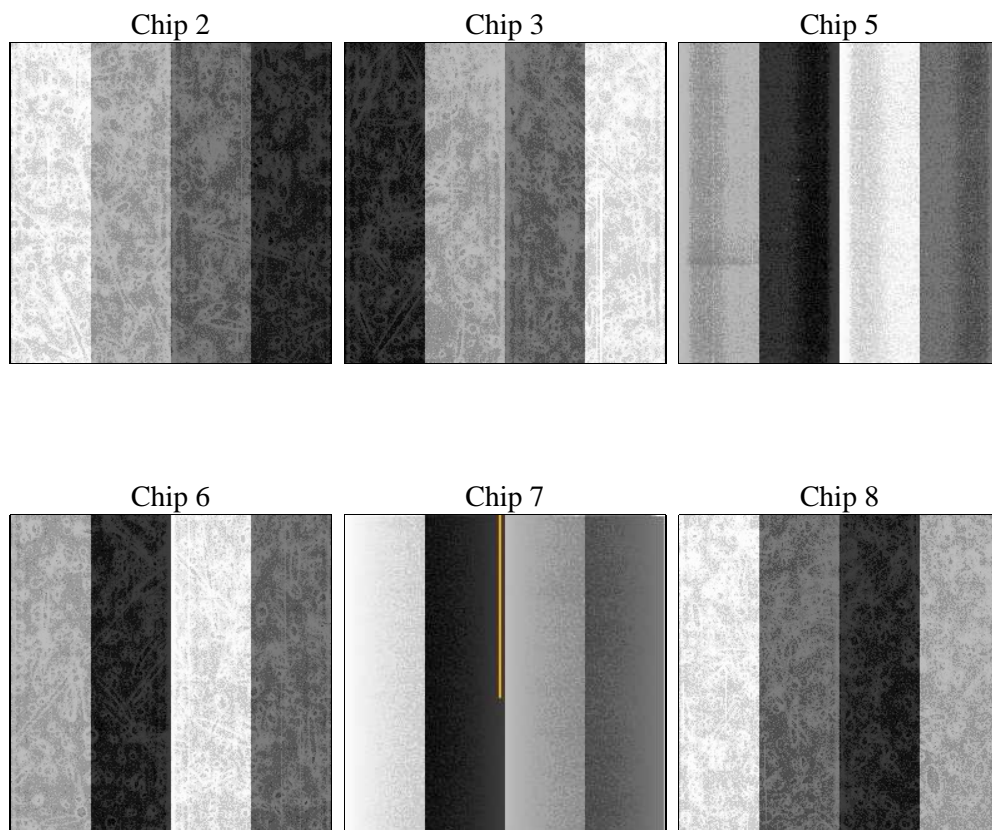
2 OBI

2.1 OBI

2.1.1 Images



2.1.2 Bias



2.1.3 Parameters

obi_num	4	Obi number	sched_exp_time	6000.000000	[s] Scheduled observation exposure time
ascdsver	8.4.5	Processing system revision	ontime	5756.8000053465	Sum of GTIs [s]
caldsver	4.5.2	 	ontime2	5756.8000053465	Sum of GTIs [s]
date	2012-10-03T03:37:46	Date and time of file creation	ontime3	5756.6798212379	Sum of GTIs [s]
revision	3	Processing version of data	ontime5	5756.7619012296	Sum of GTIs [s]
			ontime6	5756.7208612412	Sum of GTIs [s]
			ontime7	5756.8000053465	Sum of GTIs [s]
			ontime8	5753.3976913989	Sum of GTIs [s]
			l1events	284098	Number of level 1 events

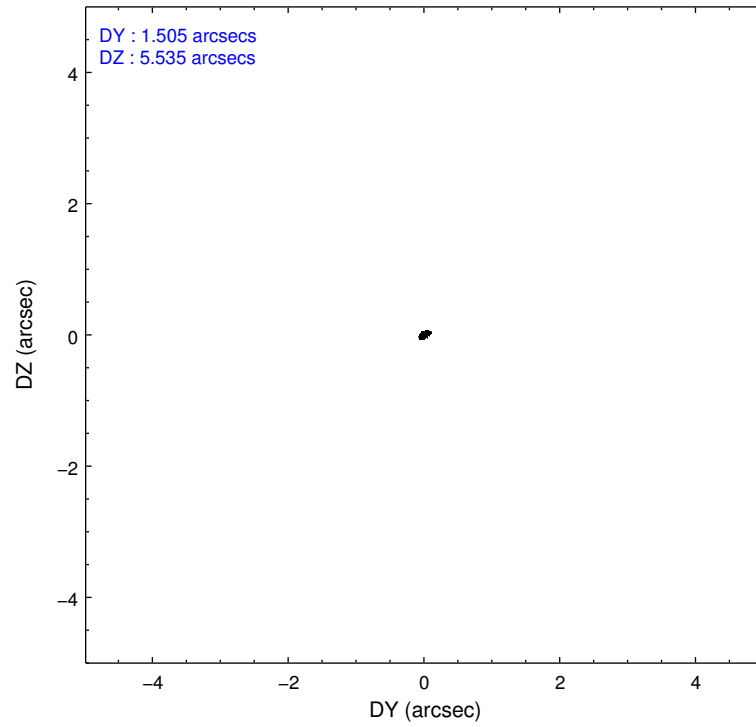
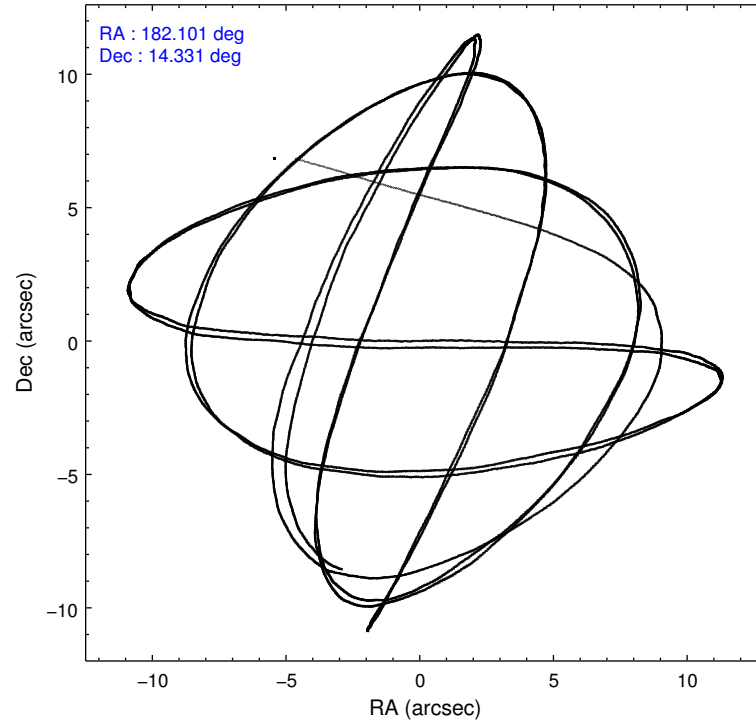
2.1.4 Events

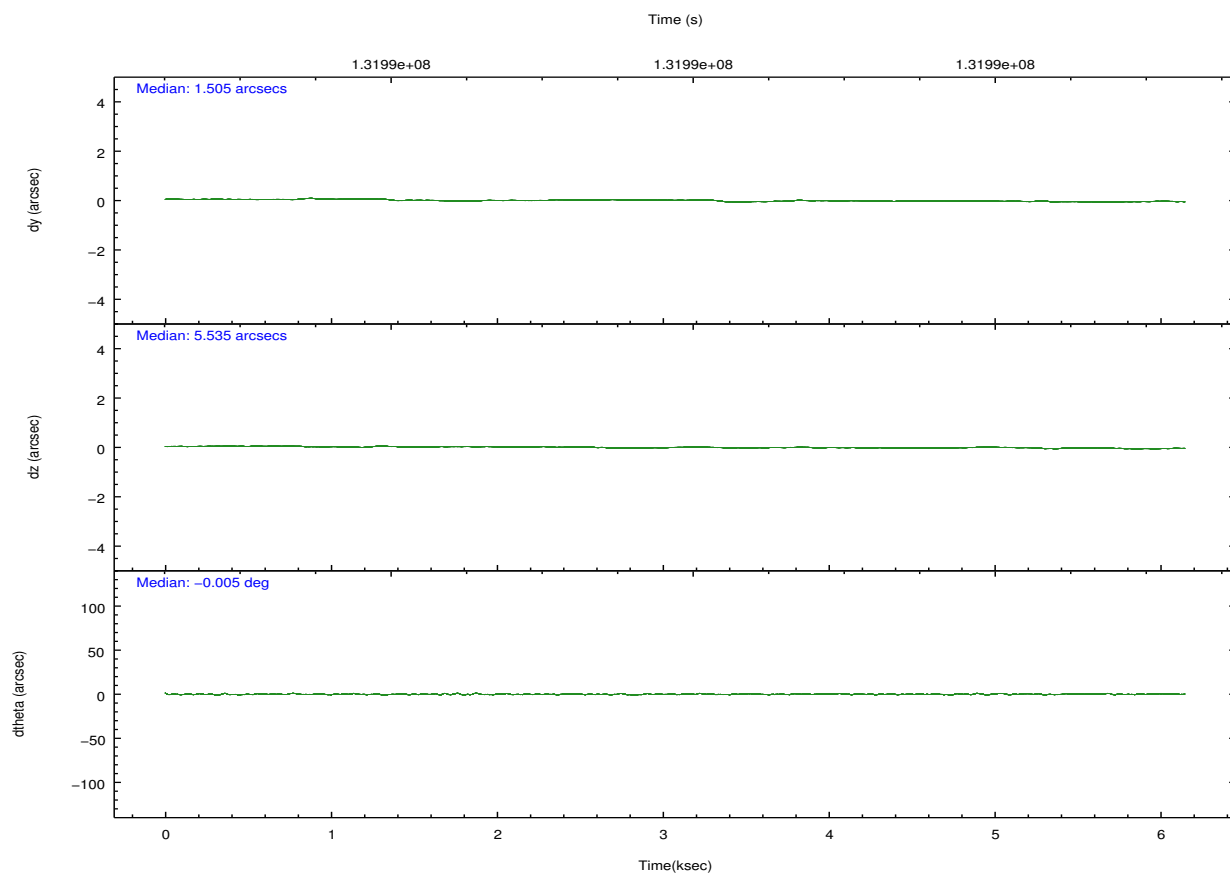
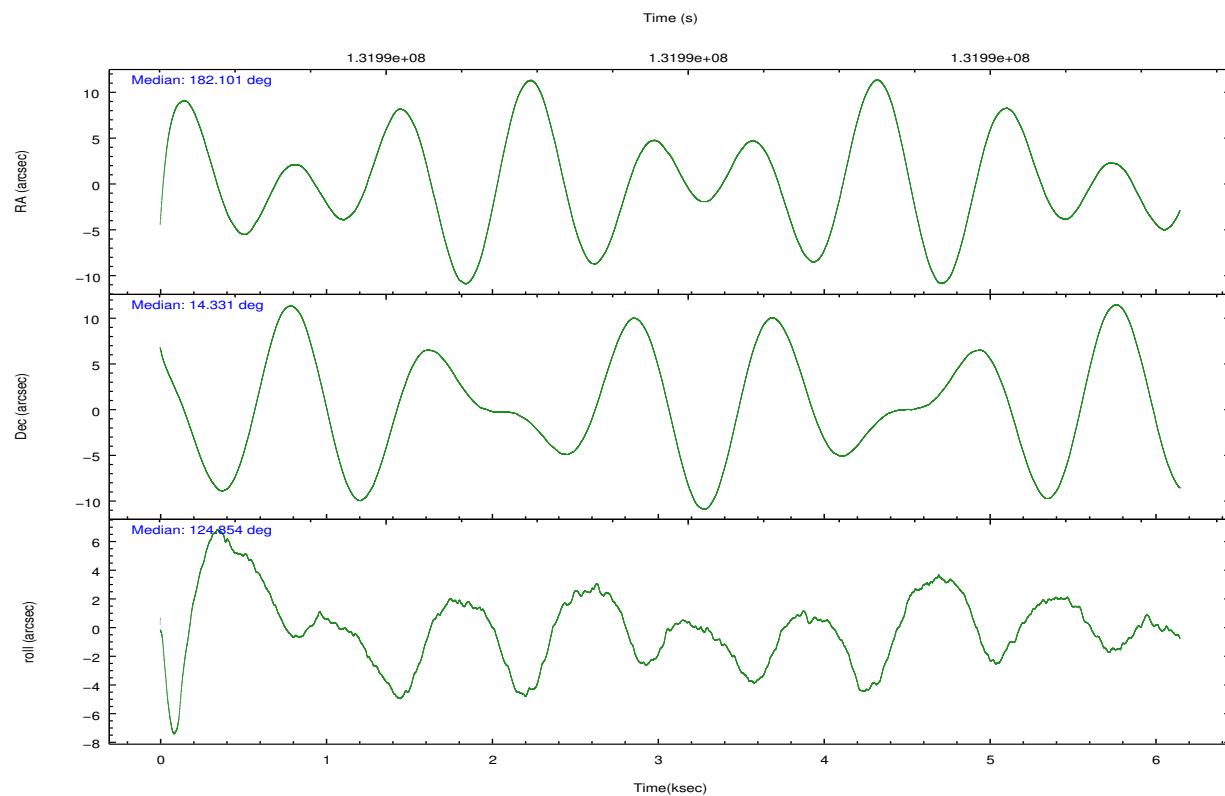
	ccd 2	ccd 3	ccd 5	ccd 6	ccd 7	ccd 8		ccd 2	ccd 3	ccd 5	ccd 6	ccd 7	ccd 8
level 1 events	42143	38884	60277	39551	50652	52591	grade 0 events	1830	1825	5637	1972	1993	3474
rejected events	37586	34538	31328	34823	29431	41580		4%	4%	9%	4%	3%	6%
rejected %	89%	88%	51%	88%	58%	79%	grade 1 events	20	16	329	13	44	41
								0%	0%	0%	0%	0%	0%
							grade 2 events	1073	890	7628	959	4233	2321
								2%	2%	12%	2%	8%	4%
							grade 3 events	423	439	1083	451	1888	1260
								1%	1%	1%	1%	3%	2%
							grade 4 events	442	401	1129	437	1939	1131
								1%	1%	1%	1%	3%	2%
							grade 5 events	1463	1519	4426	1698	4845	2126
								3%	3%	7%	4%	9%	4%
							grade 6 events	794	797	13523	914	11182	2829
								1%	2%	22%	2%	22%	5%
							grade 7 events	36098	32997	26522	33107	24528	39409
								85%	84%	44%	83%	48%	74%

2.2 Compared Parameters

Parameter	Planned	Actual	Parameter	Planned	Actual
Instrument	ACIS	ACIS	Obspar format version number	7	7
Detector	ACIS-235678	ACIS-235678	Obspar file type	PREDICTED	ACTUAL
Grating	NONE	NONE	Obspar update status	NONE	UPDATED
Data mode	FAINT	FAINT	Number of optional ACIS chips dropped	0	0
Observation mode	POINTING	POINTING	On-chip summing requested	N	N
[deg] Pointing RA	182.126833	182.1012265144668	Subarray requested	NONE	NONE
[deg] Pointing Dec	14.319853	14.33111417425248	Alternating exposures requested	N	N
[deg] Pointing Roll	124.701451	124.8644300307448	[s] Primary exposure time	0.000000	3.2
[mm] SIM focus pos	-0.684267	-0.6828225247311905			
[mm] SIM defocus	0	0.001444936568705701			
[mm] SIM translation stage pos	-190.132523	-190.1400660498719			
[mm] SIM translation stage offset	0	0.00754346686406393			
[s] Observation start time (MET)	131988953.184000	131987942.74397			
Observation start date	2002-03-08T15:34:49	2002-03-08T15:19:02			
[s] Observation end time (MET)	131994953.184000	131996056.1318			
Observation end date	2002-03-08T17:14:49	2002-03-08T17:34:16			
Read mode	TIMED	TIMED			

2.3 Aspect



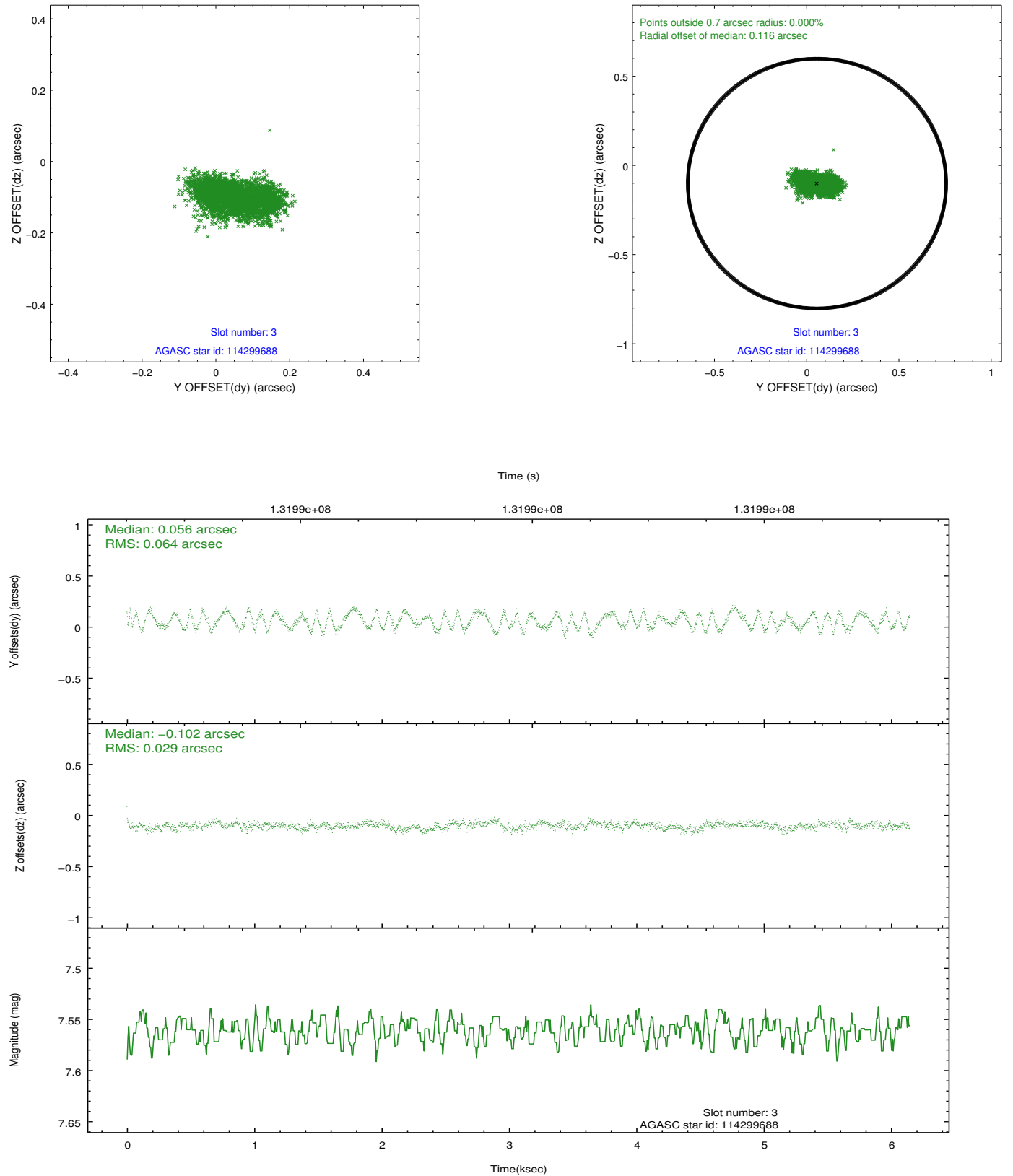


Slot Statistics

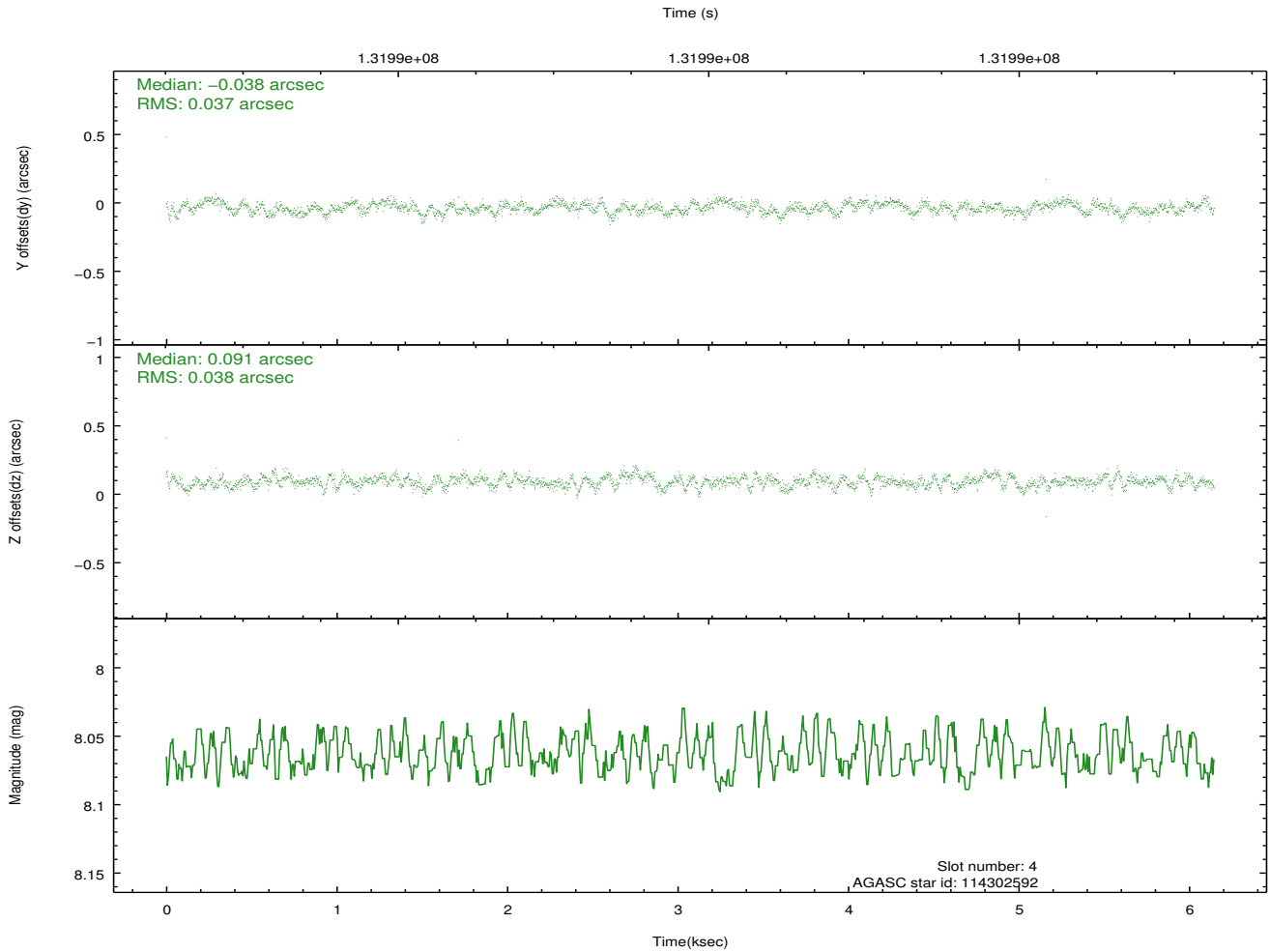
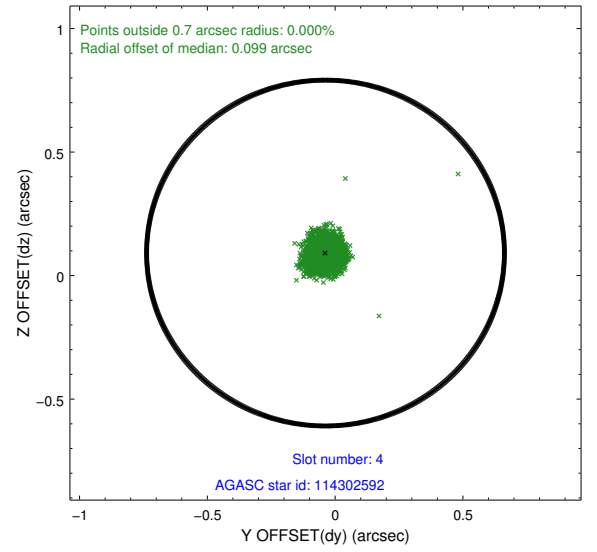
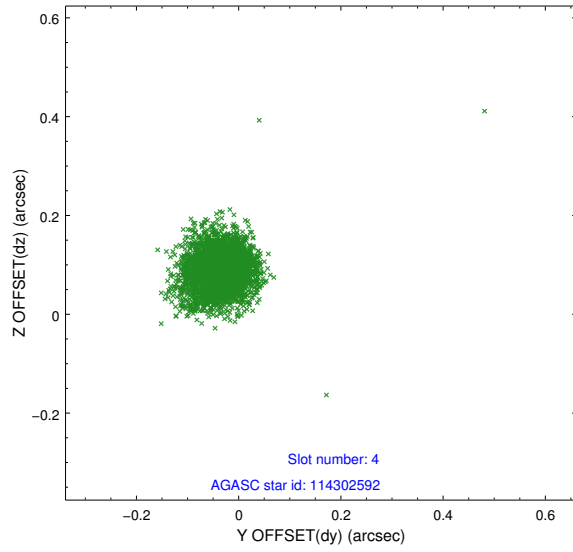
slot	status	id	mag	n_pts	med_dy	med_dz	dr1	dr2	ra	dec	mean_y	mean_z
0	FID	ACIS-S-2	7.11	1500	-0.055	0.002	0.006	0.010	0.000000	0.000000	-754.12	-1726.68
1	FID	ACIS-S-4	7.21	1500	-0.007	0.026	0.005	0.009	0.000000	0.000000	2158.72	180.91
2	FID	ACIS-S-5	7.24	1500	0.031	-0.019	0.006	0.010	0.000000	0.000000	-1805.68	175.53
3	GUIDE	114299688	7.56	3000	0.056	-0.102	0.078	0.119	181.899671	13.516936	-1923.74	2299.39
4	GUIDE	114302592	8.06	3000	-0.038	0.091	0.056	0.089	182.751254	14.424375	-927.94	-2004.32
5	GUIDE	114302168	7.94	2999	-0.060	0.034	0.064	0.106	182.308899	14.829820	1148.76	-1565.85
6	GUIDE	114302432	9.07	2999	0.069	-0.055	0.076	0.121	182.559600	14.527486	-242.08	-1666.15
7	GUIDE	189019688	9.48	2999	-0.032	0.032	0.118	0.192	182.106927	15.124220	2420.31	-1591.13

2.4 Star Slots

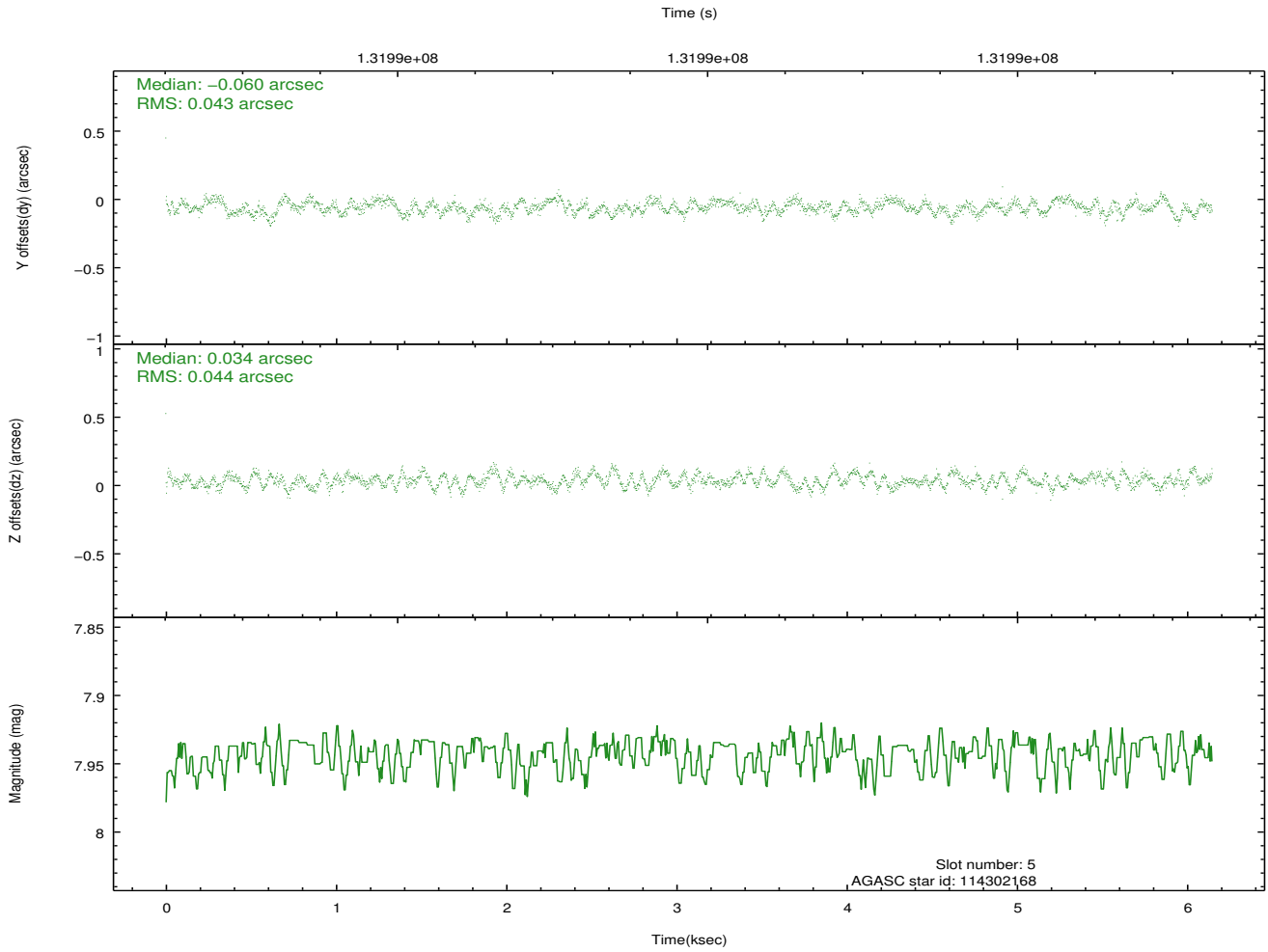
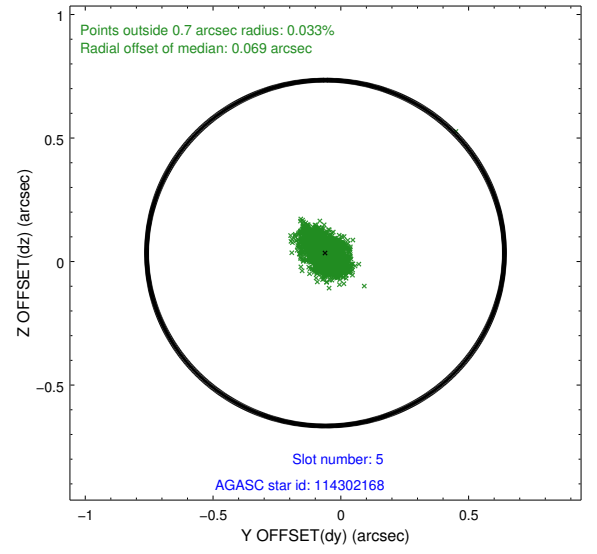
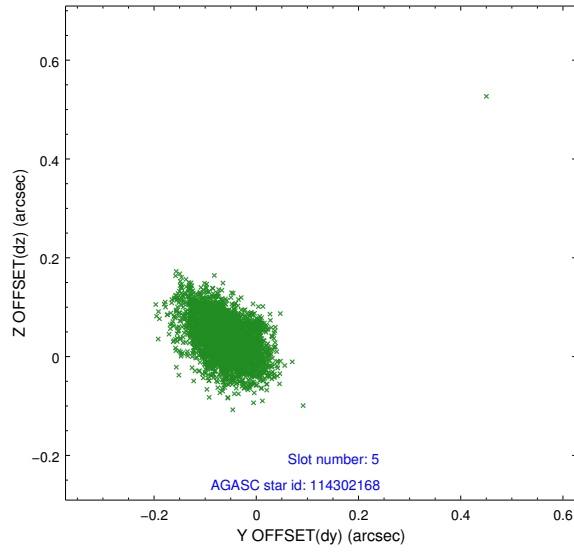
2.4.1 Slot 3



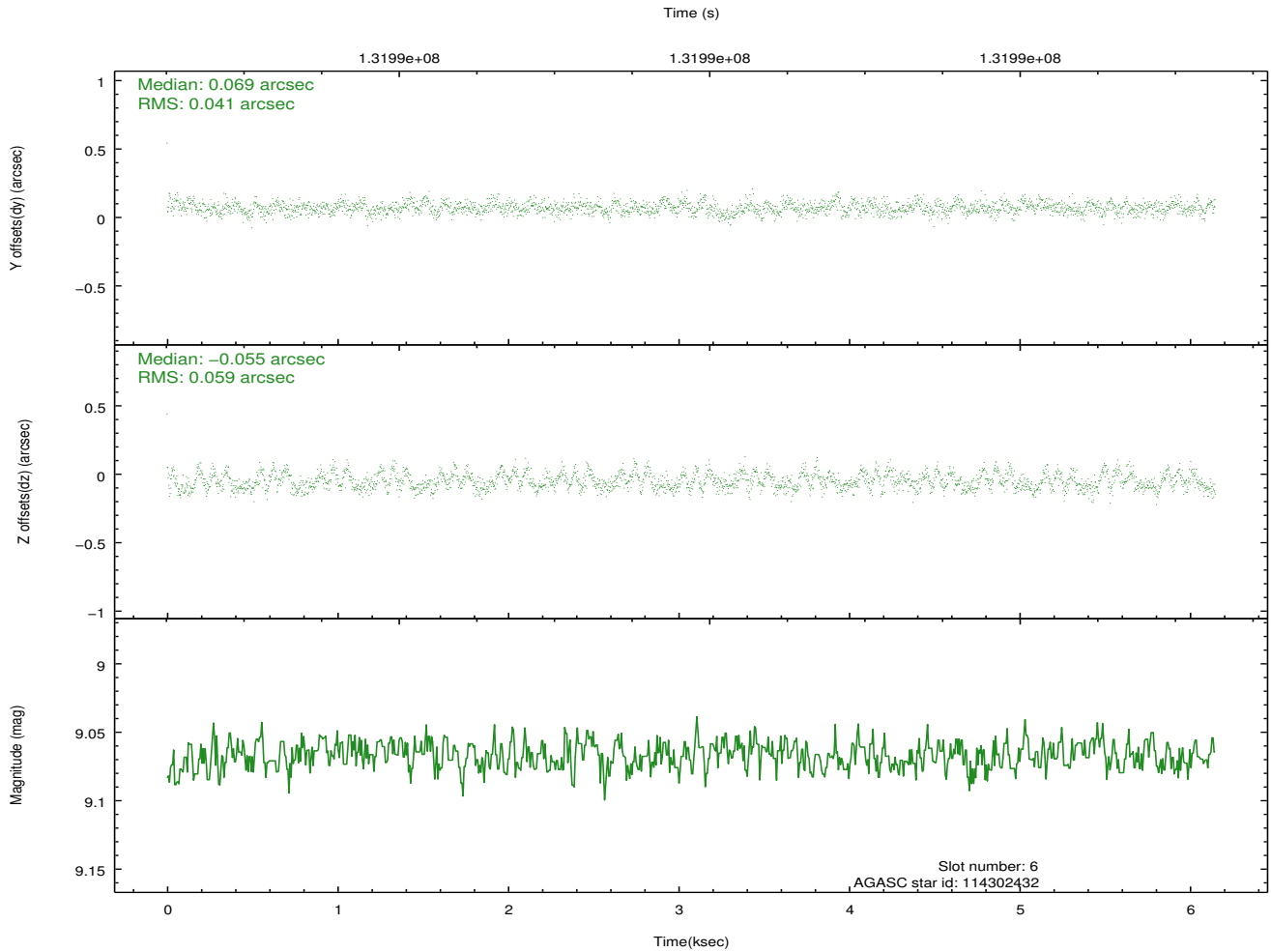
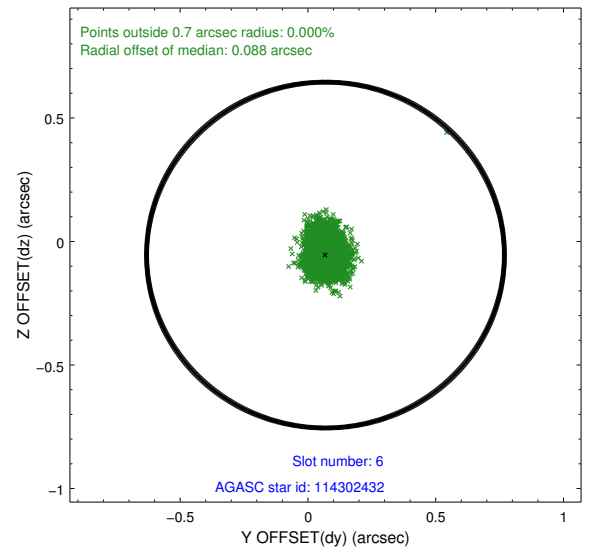
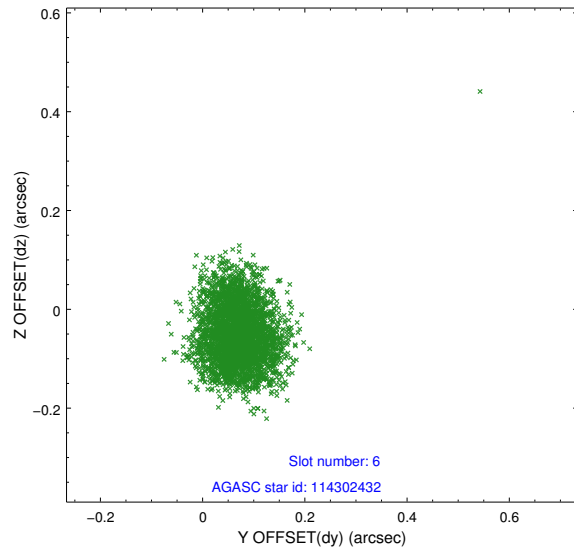
2.4.2 Slot 4



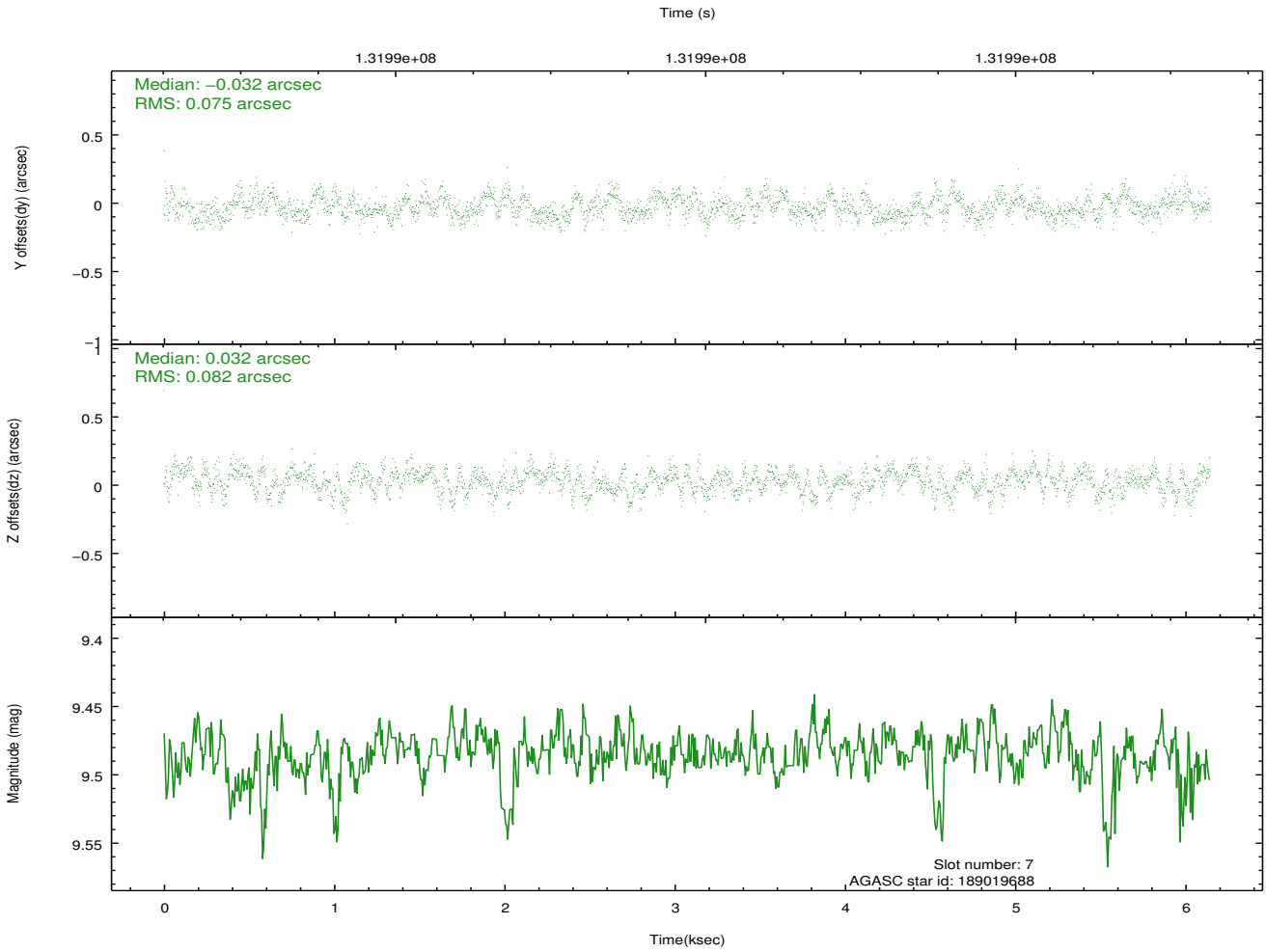
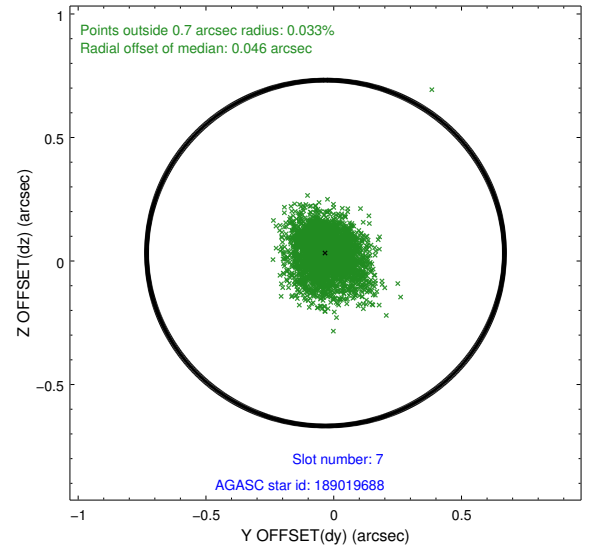
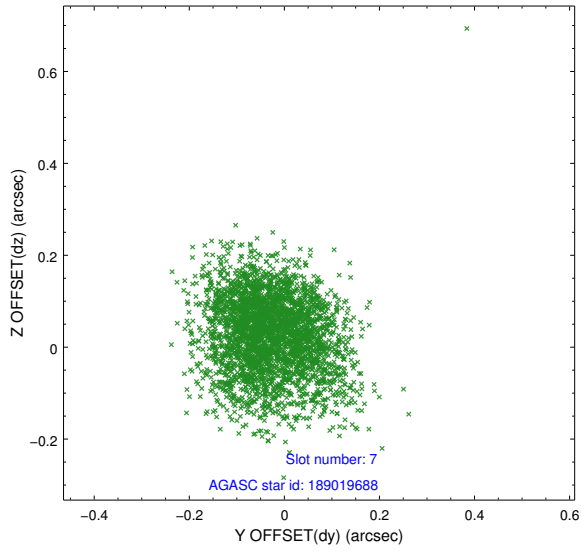
2.4.3 Slot 5



2.4.4 Slot 6

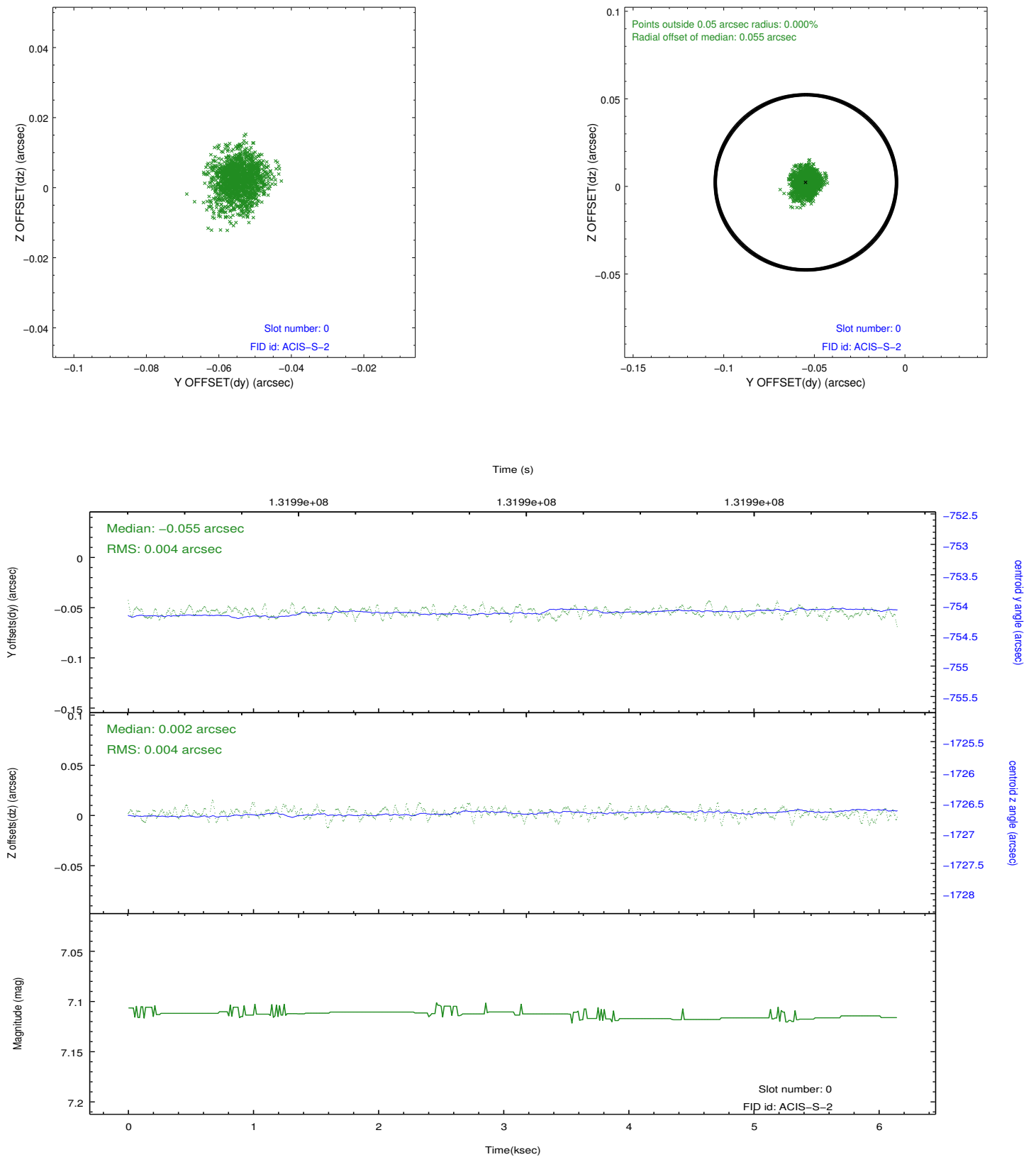


2.4.5 Slot 7

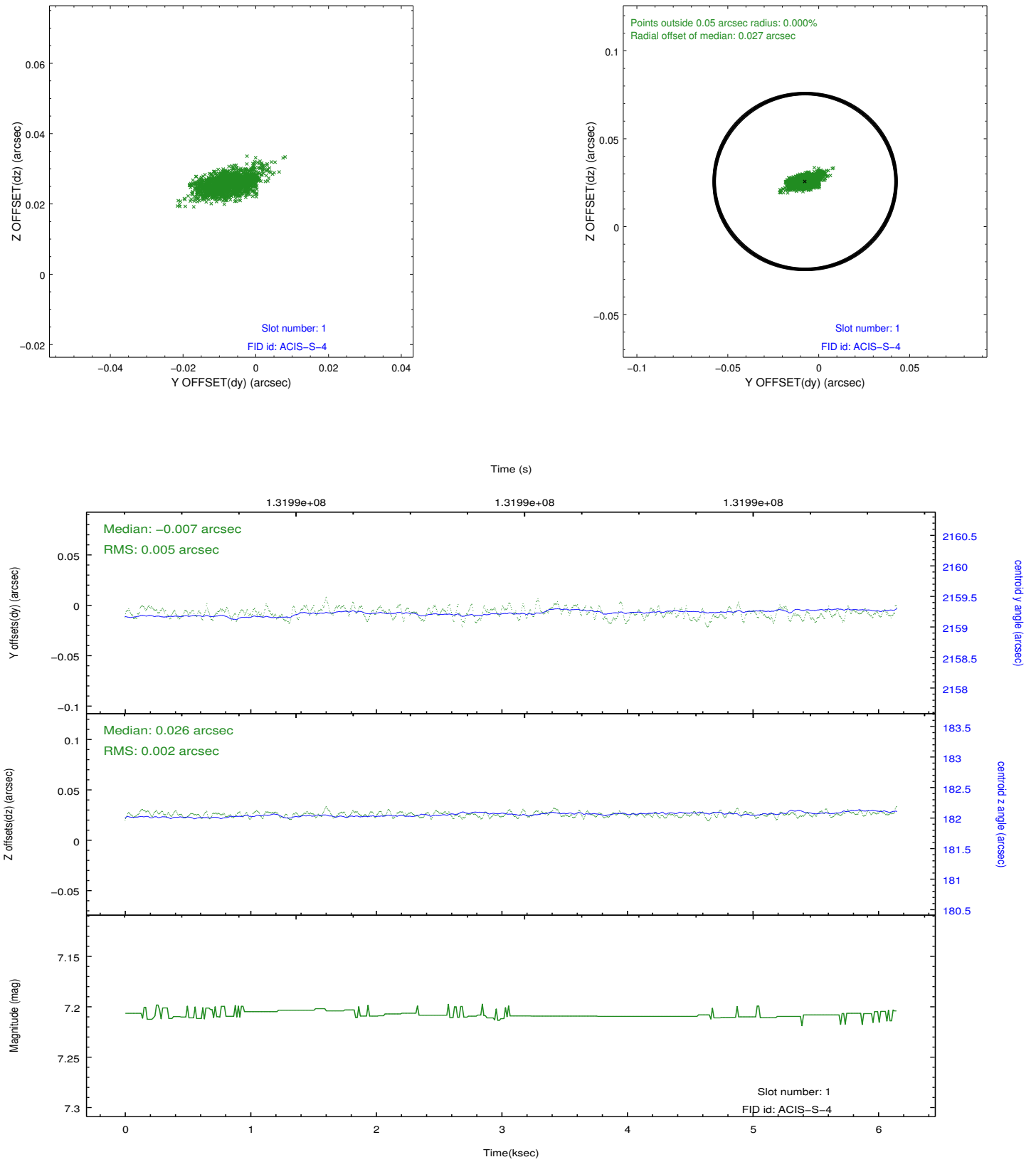


2.5 FID Slots

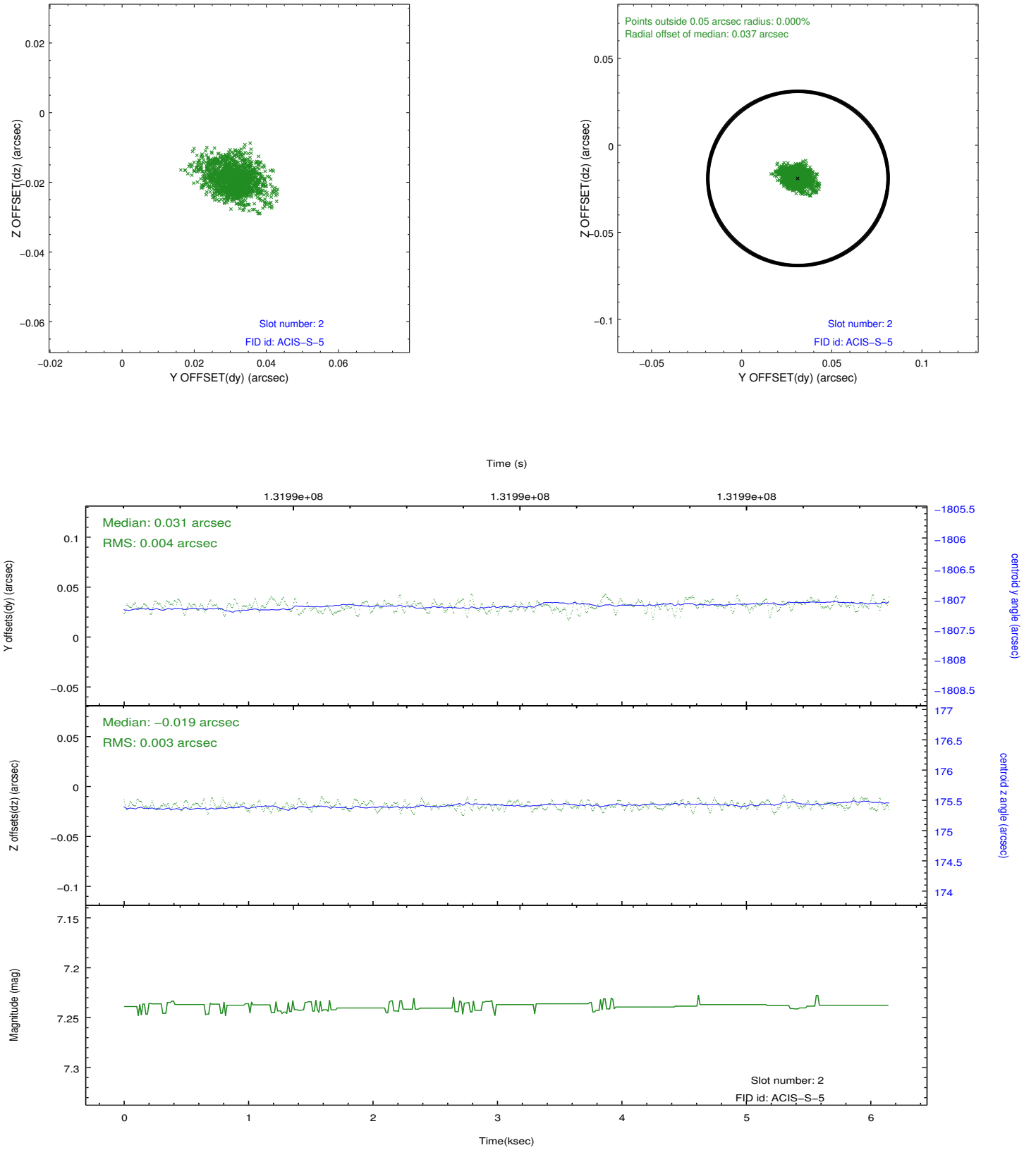
2.5.1 Slot 0



2.5.2 Slot 1



2.5.3 Slot 2



A Summary

A.1 Status

V&V Scientist	Beth Sundheim
V&V Date (YYYY-MM-DD)	2012.10.04
V&V Edition	1
V&V Disposition and Status	OK
V&V Charge Time	5.76

A.2 Comments