

# V&V Reference Report

## L2 ASCDS Version : 7.6.9

Observation 2063 - L2 Version 001  
Chandra X-Ray Center

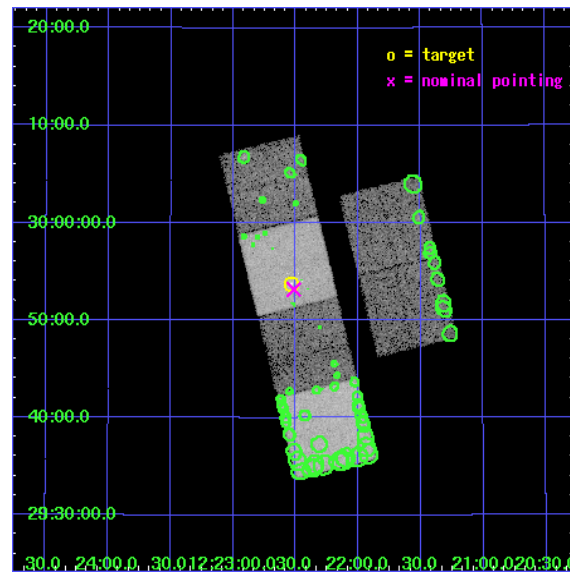
L2 Processing Date : Dec 8 2006

## Contents

<b>1</b>	<b>Front</b>	<b>2</b>
<b>2</b>	<b>OBI</b>	<b>3</b>
2.1	OBI . . . . .	3
2.1.1	Images . . . . .	3
2.1.2	Bias . . . . .	3
2.1.3	Parameters . . . . .	4
2.1.4	Events . . . . .	4
2.2	Compared Parameters . . . . .	5
2.3	Aspect . . . . .	6
2.4	Star Slots . . . . .	9
2.4.1	Slot 3 . . . . .	9
2.4.2	Slot 4 . . . . .	10
2.4.3	Slot 5 . . . . .	11
2.4.4	Slot 6 . . . . .	12
2.4.5	Slot 7 . . . . .	13
2.5	FID Slots . . . . .	14
2.5.1	Slot 0 . . . . .	14
2.5.2	Slot 1 . . . . .	15
2.5.3	Slot 2 . . . . .	16
<b>3</b>	<b>Point Sources</b>	<b>17</b>
<b>A</b>	<b>Summary</b>	<b>18</b>
A.1	Status . . . . .	18
A.2	Comments . . . . .	18

# 1 Front

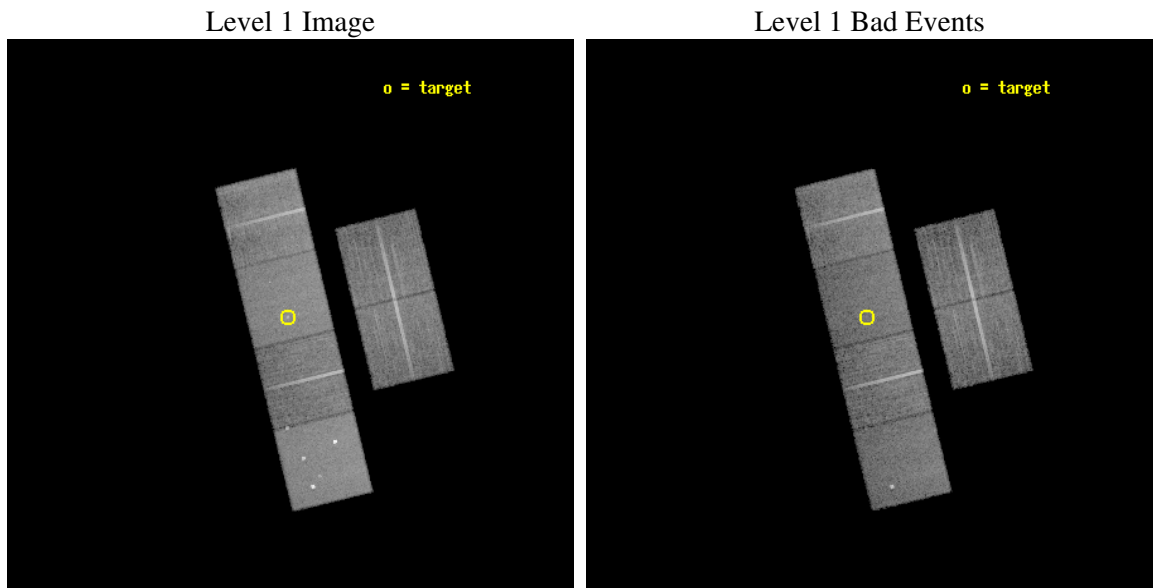
seq_num	600197
obs_id	2063
title	THE X-RAY POINT SOURCE POPULATION IN SPIRAL GALAXIES
observer	Dr. Andrea Prestwich
object	NGC 4314
dtcycle	0
cycle	P
ra_targ	185.633333
dec_targ	29.895278
ra_nom	185.6287503324
dec_nom	29.88636982043
roll_nom	256.35383101092
revision	3
ontime	16249.559054881
livetime	16043.797353819
ontime2	16249.559084788
ontime3	16246.318114549
ontime5	16249.559054881
ontime6	16249.559054881
ontime7	16249.559054881
ontime8	16246.318094641
l2events	162850



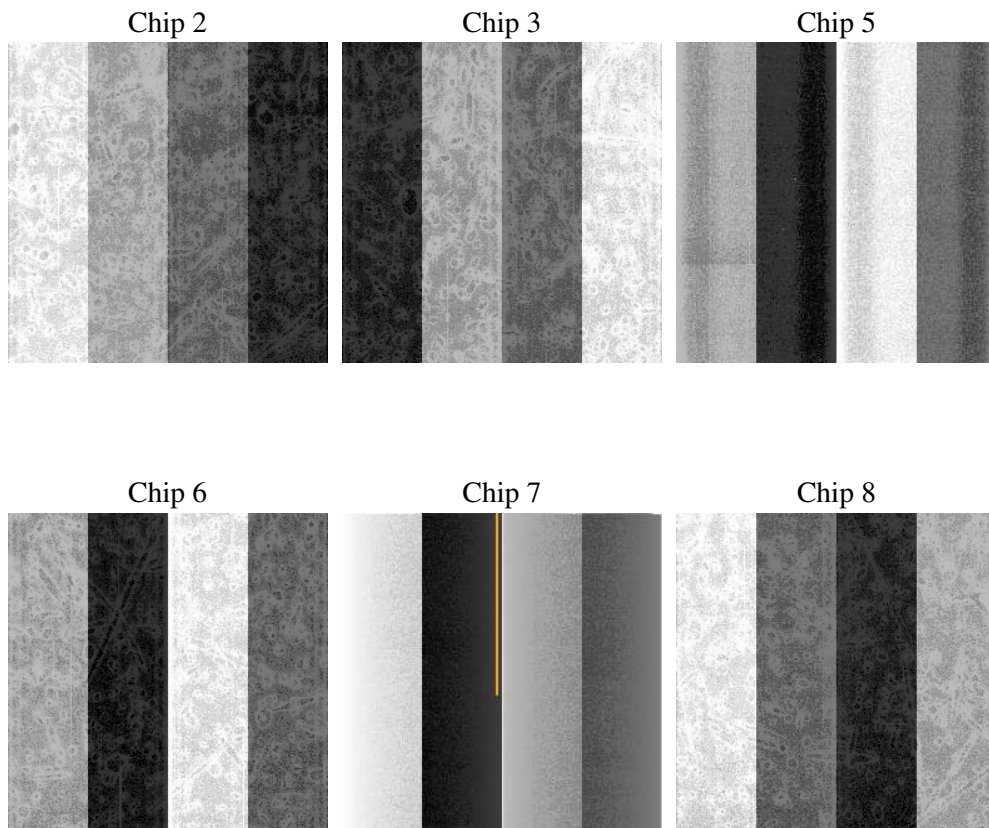
## 2 OBI

### 2.1 OBI

#### 2.1.1 Images



#### 2.1.2 Bias



### 2.1.3 Parameters

obi_num	0
ascdsver	7.6.9
caldsver	3.2.4
date	2006-12-08T12:53:42
revision	3

sched_exp_time	16500.000000
ontime	16256.850313738
ontime2	16256.850313738
ontime3	16253.609343484
ontime5	16256.850313738
ontime6	16256.850313738
ontime7	16256.850313738
ontime8	16253.609213904
l1events	751928

### 2.1.4 Events

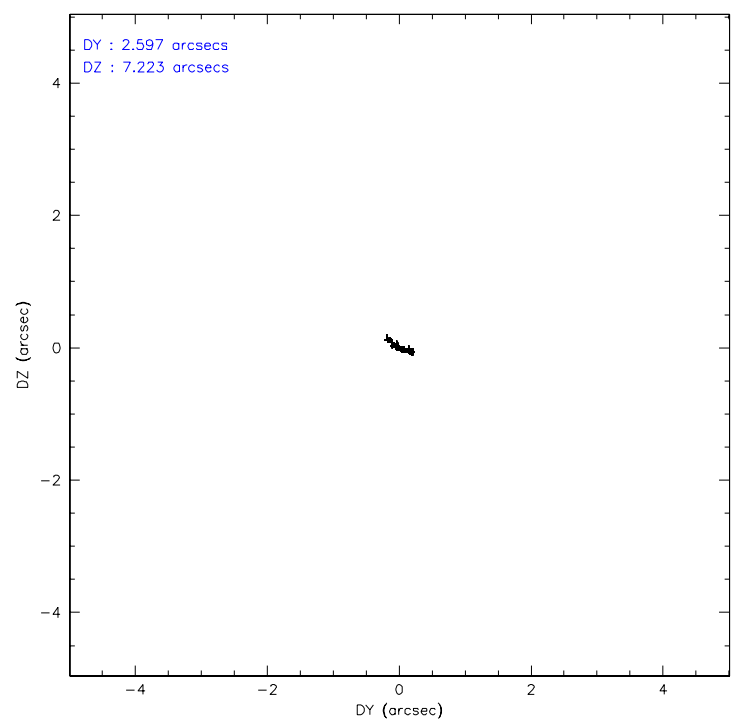
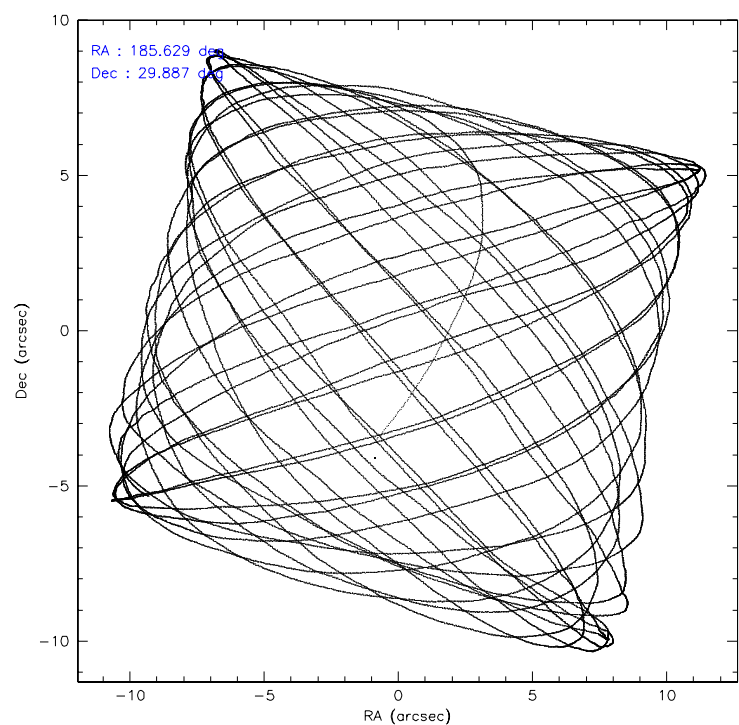
	ccd 2	ccd 3	ccd 5	ccd 6	ccd 7	ccd 8
level 1 events	107456	103538	157568	107233	138783	137350
rejected events	94998	91339	84351	94561	83147	110457
rejected %	88%	88%	53%	88%	59%	80%

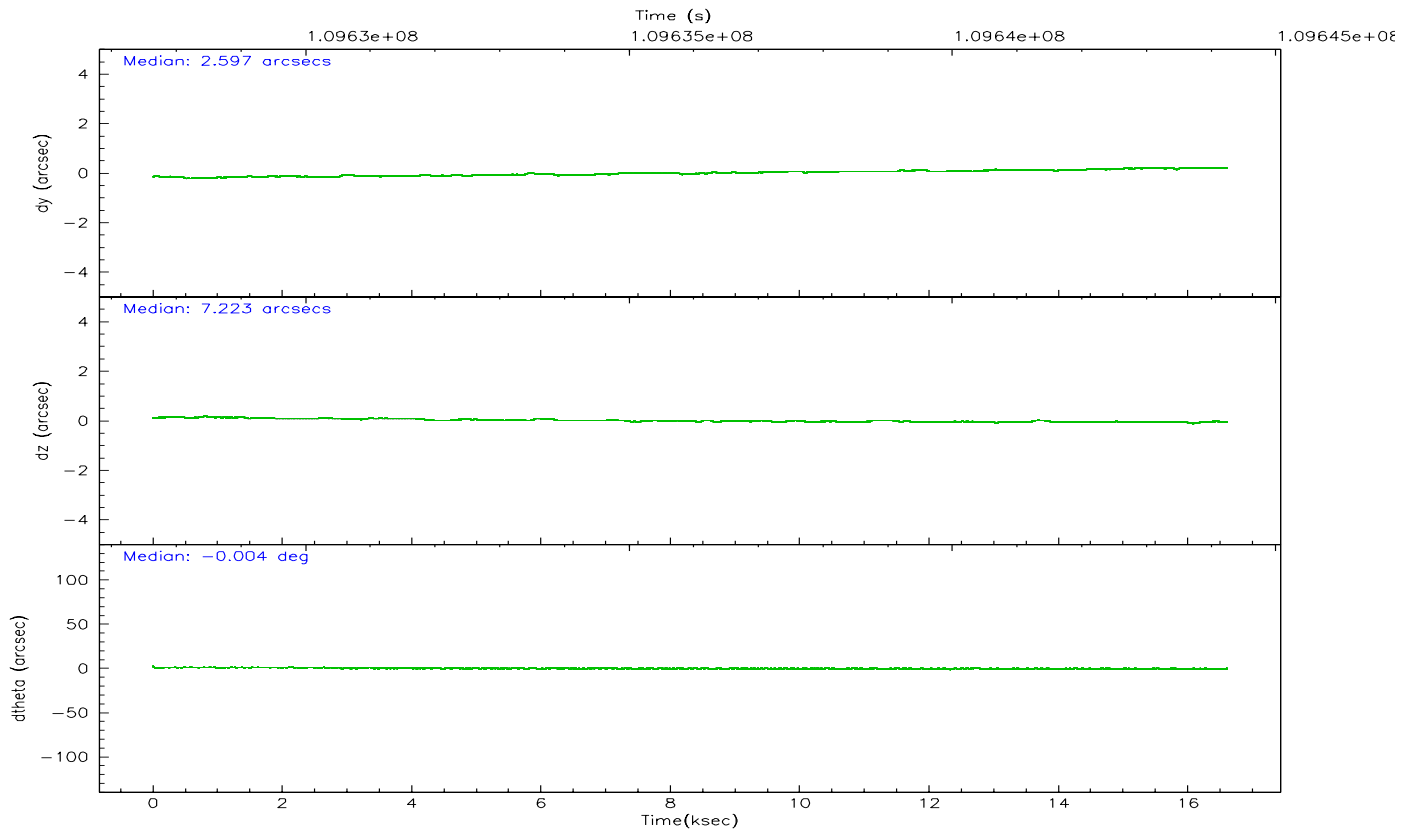
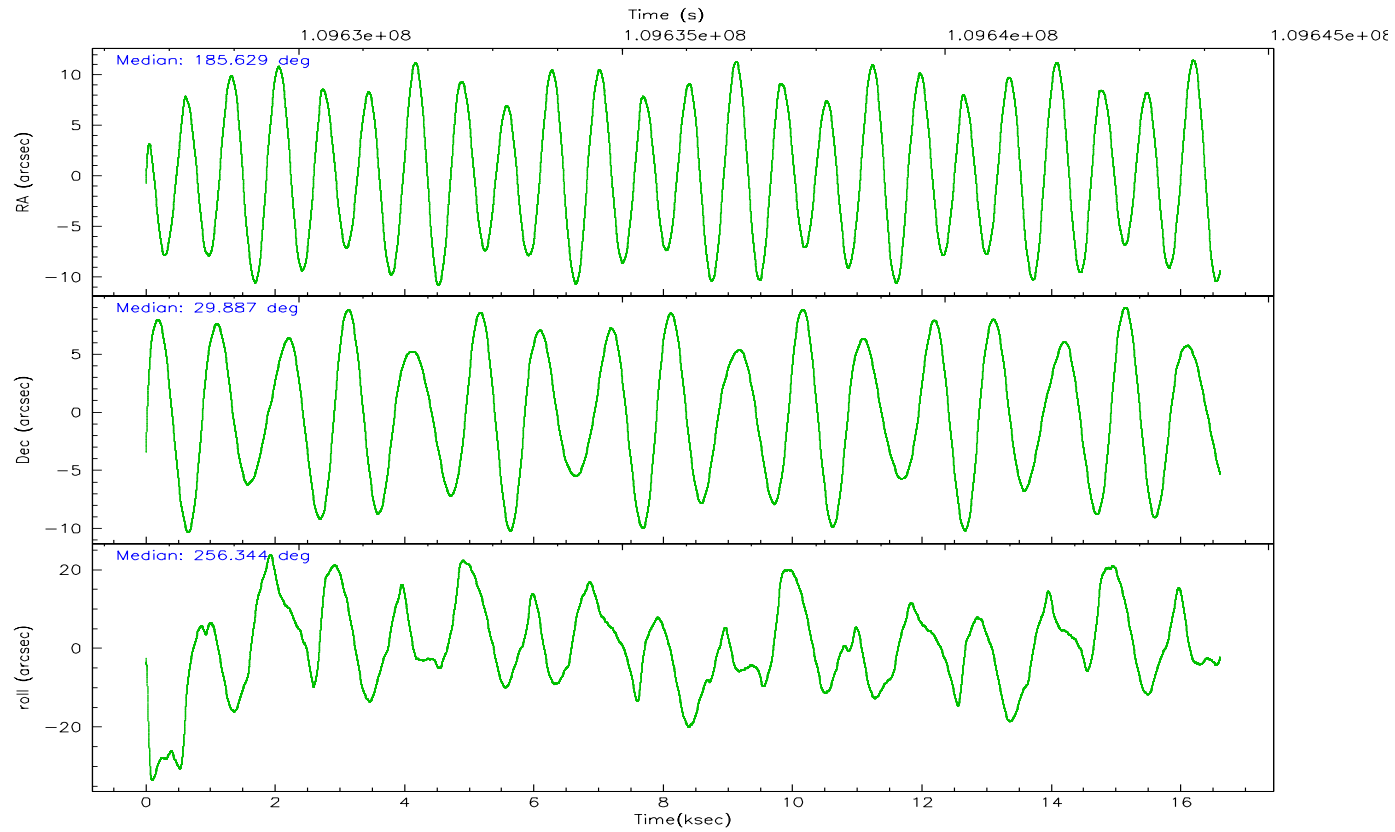
	ccd 2	ccd 3	ccd 5	ccd 6	ccd 7	ccd 8
grade 0 events	5393	5247	9448	5116	3995	8761
	5%	5%	5%	4%	2%	6%
grade 1 events	47	48	138	51	86	89
	0%	0%	0%	0%	0%	0%
grade 2 events	2499	2446	22319	2491	13716	5717
	2%	2%	14%	2%	9%	4%
grade 3 events	1176	1140	1588	1288	3077	2898
	1%	1%	1%	1%	2%	2%
grade 4 events	1164	1179	1540	1256	3024	2713
	1%	1%	0%	1%	2%	1%
grade 5 events	3714	4065	7515	4312	9471	5595
	3%	3%	4%	4%	6%	4%
grade 6 events	2229	2193	38353	2530	31846	6839
	2%	2%	24%	2%	22%	4%
grade 7 events	91234	87220	76667	90189	73568	104738
	84%	84%	48%	84%	53%	76%

## 2.2 Compared Parameters

Parameter	Planned	Actual	Parameter	Planned	Actual
Instrument	ACIS	ACIS	Obspar format version number	6	6
Detector	ACIS-235678	ACIS-235678	Obspar file type	PREDICTED	ACTUAL
Grating	NONE	NONE	Obspar update status	NONE	UPDATED
Data mode	FAINT	FAINT	Number of optional ACIS chips dropped	0	0
Observation mode	POINTING	POINTING	On-chip summing requested	N	N
Pointing RA	185.619584	185.628750332401	Subarray requested	NONE	NONE
Pointing Dec	29.912449	29.88636982042968	Alternating exposures requested	N	N
Pointing Roll	256.201740	256.3538310109165	Primary exposure time	0.000000	3.2
SIM focus pos (mm)	-0.684267	-0.6828225247311905			
SIM defocus (mm)	0	0.001444936568705701			
SIM translation stage pos (mm)	-190.132523	-190.1400660498719			
SIM translation stage offset (mm)	0	0.00754346686406393			
Observation start time	109627751.184000	109626457.8041			
Observation start date	2001-06-22T20:08:07	2001-06-22T19:47:37			
Observation end time	109644251.184000	109645000.05483			
Observation end date	2001-06-23T00:43:07	2001-06-23T00:56:40			
Read mode	TIMED	TIMED			

## 2.3 Aspect





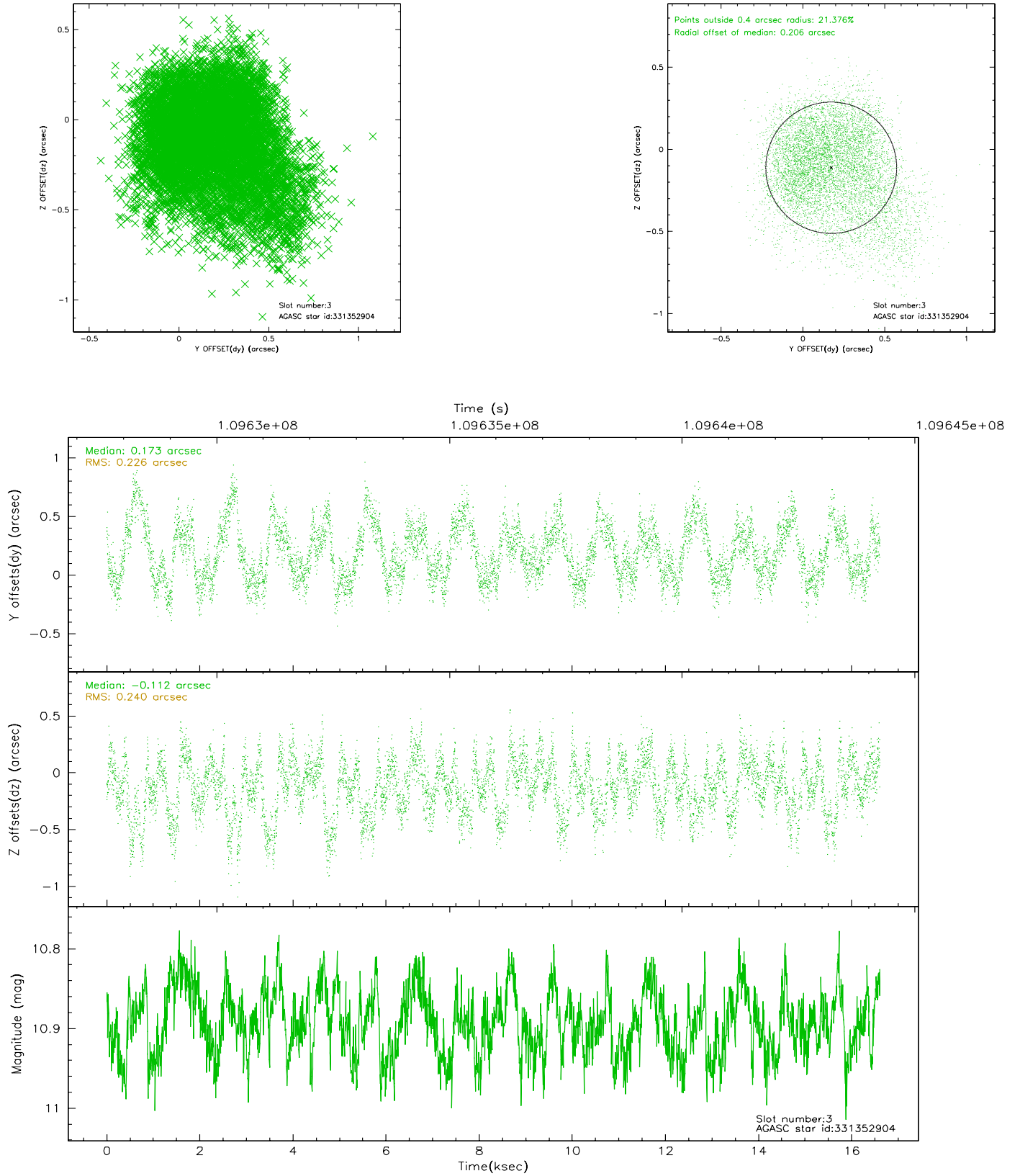
### Slot Statistics

slot	status	id	mag	n_pts	med_dy	med_dz	dr1	dr2	ra	dec	mean_y	mean_z
0	FID	ACIS-S-2	7.12	4050	0.001	0.018	0.006	0.011	0.000000	0.000000	-755.23	-1728.39
1	FID	ACIS-S-4	7.20	4050	-0.094	-0.005	0.006	0.010	0.000000	0.000000	2157.83	179.80
2	FID	ACIS-S-5	7.24	4050	0.062	-0.004	0.007	0.011	0.000000	0.000000	-1807.68	173.76
3	GUIDE	331352904	10.89	7836	0.173	-0.112	0.346	0.576	184.922261	30.006180	186.72	-2193.63
4	GUIDE	260966048	10.33	8085	-0.028	-0.054	0.249	0.412	185.169624	29.533581	1659.80	-1044.73
5	GUIDE	331355312	7.77	8100	-0.327	-0.222	0.096	0.154	184.992302	30.486549	-1546.37	-2385.27
6	GUIDE	260964592	9.76	8095	-0.125	0.112	0.124	0.207	186.307418	29.951441	-653.30	2047.74
7	GUIDE	260965688	10.24	7966	0.321	0.278	0.155	0.276	186.109030	29.135383	2348.13	2161.47

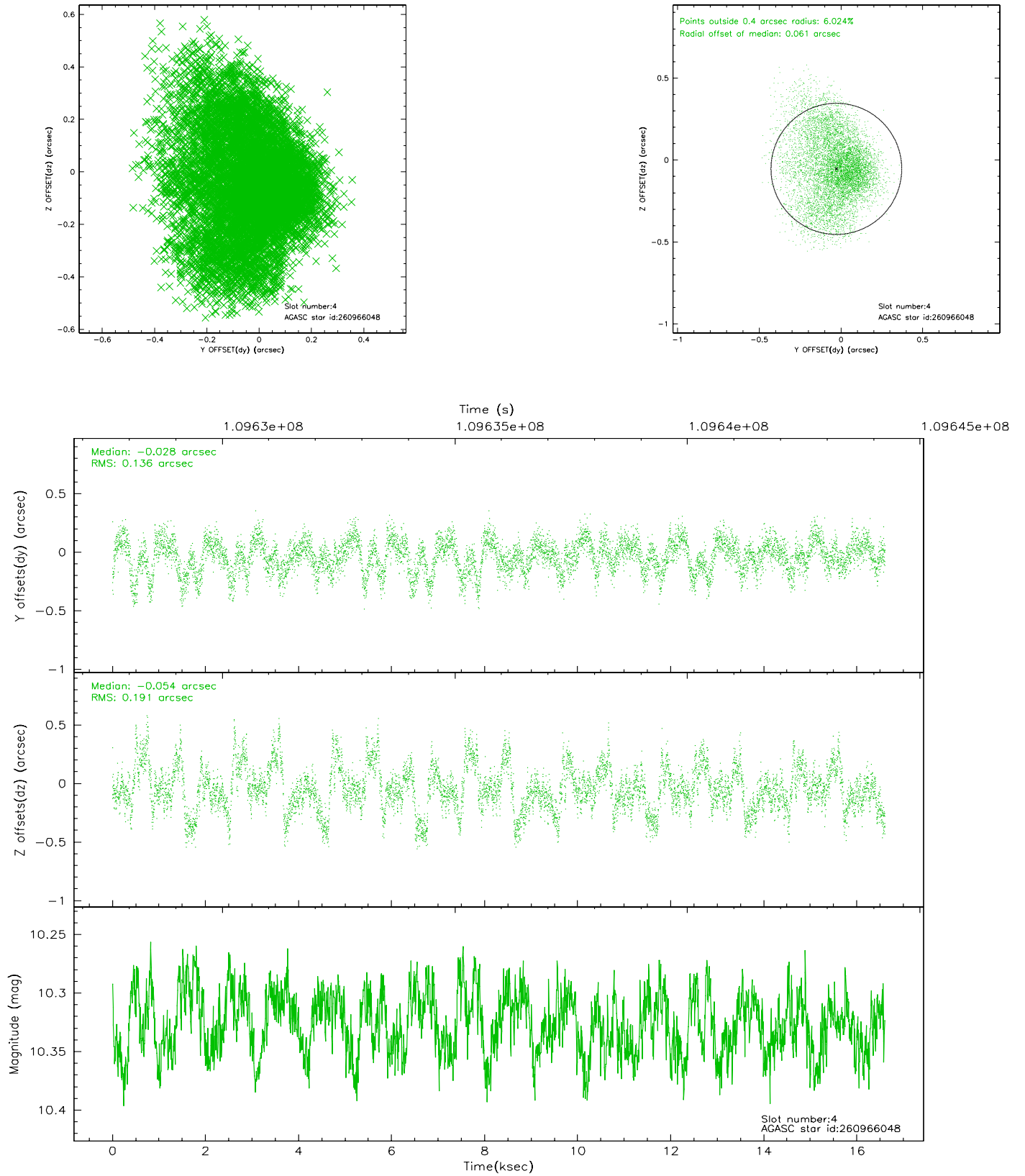


## 2.4 Star Slots

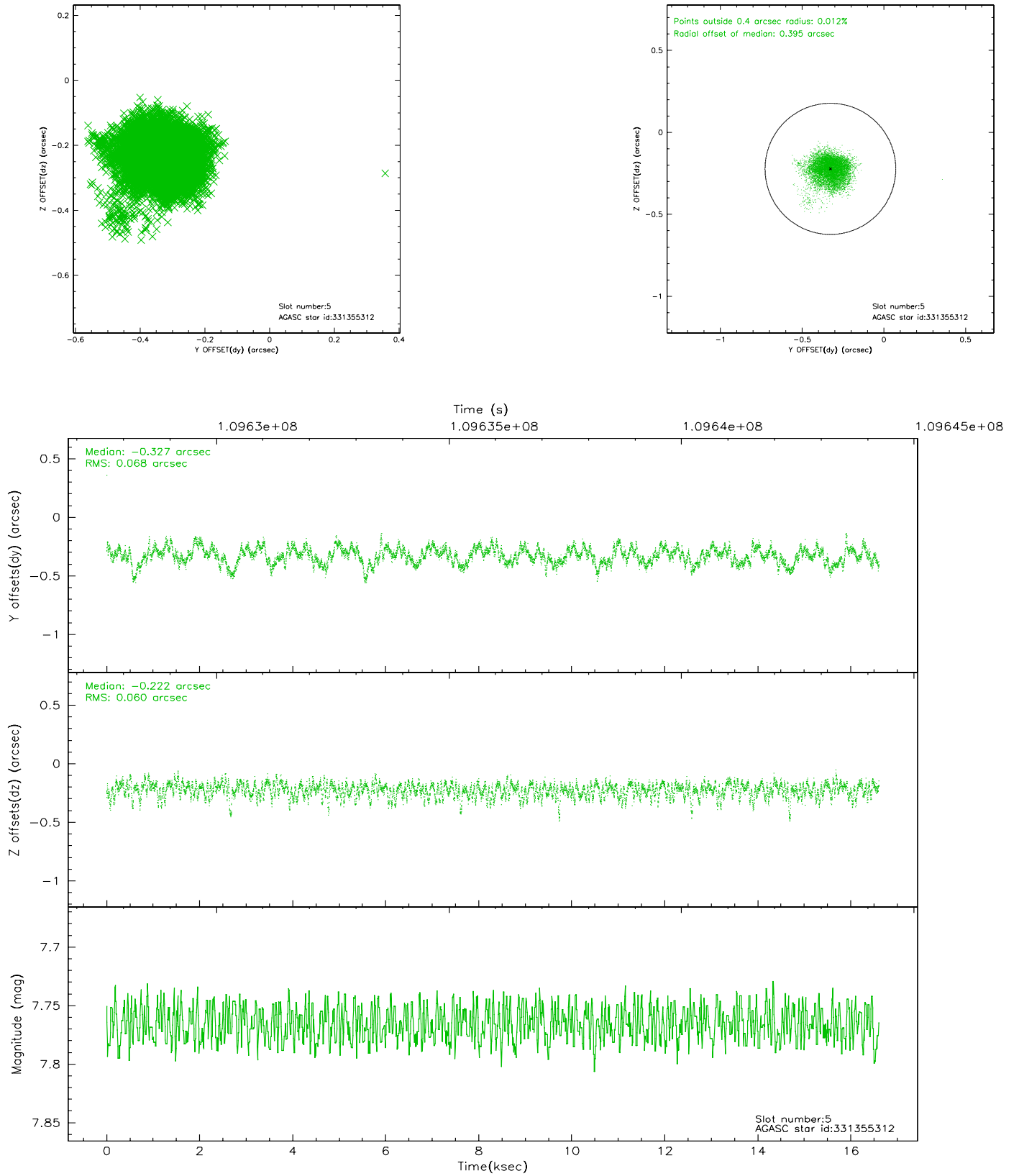
### 2.4.1 Slot 3



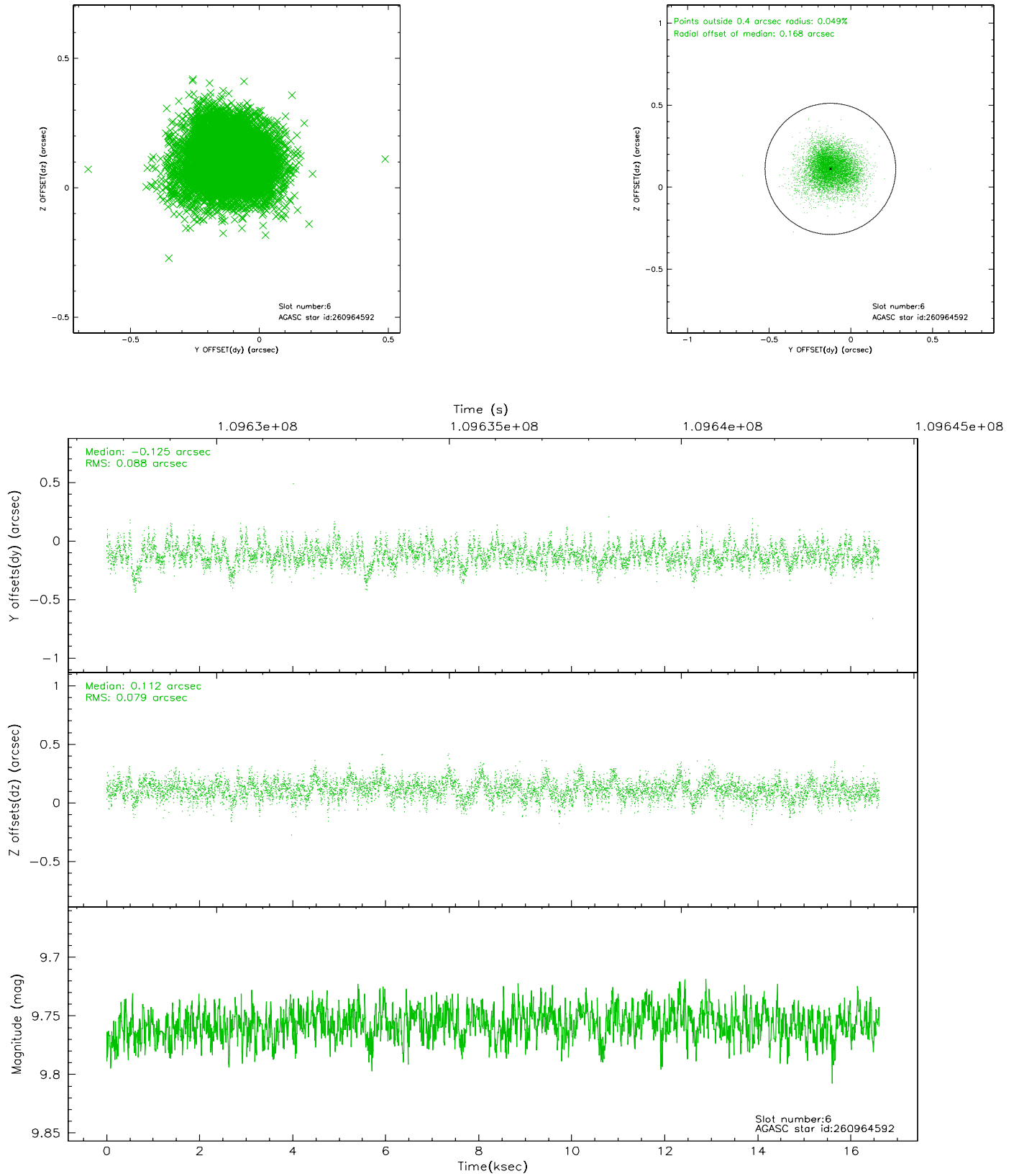
## 2.4.2 Slot 4



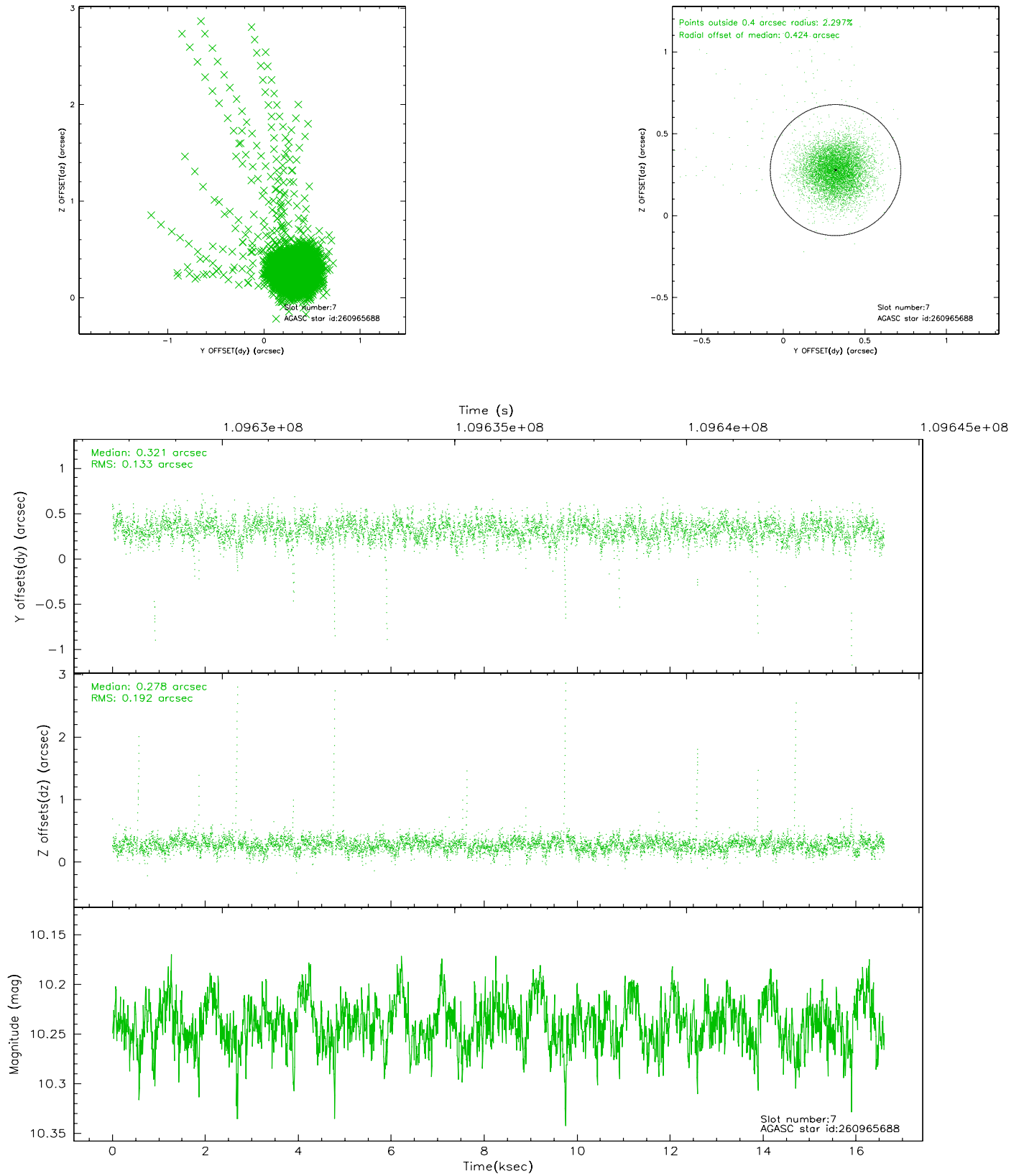
### 2.4.3 Slot 5



## 2.4.4 Slot 6

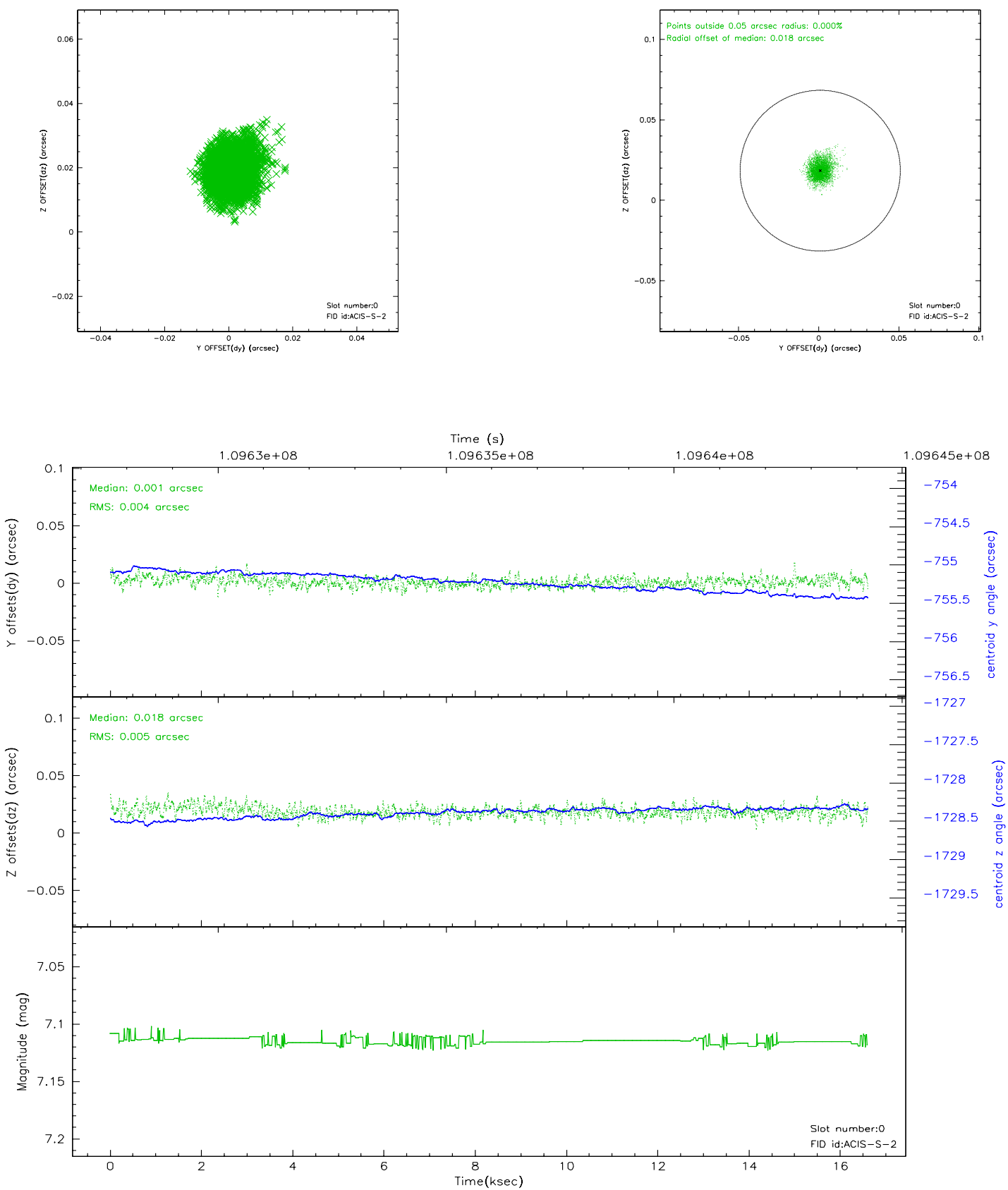


## 2.4.5 Slot 7

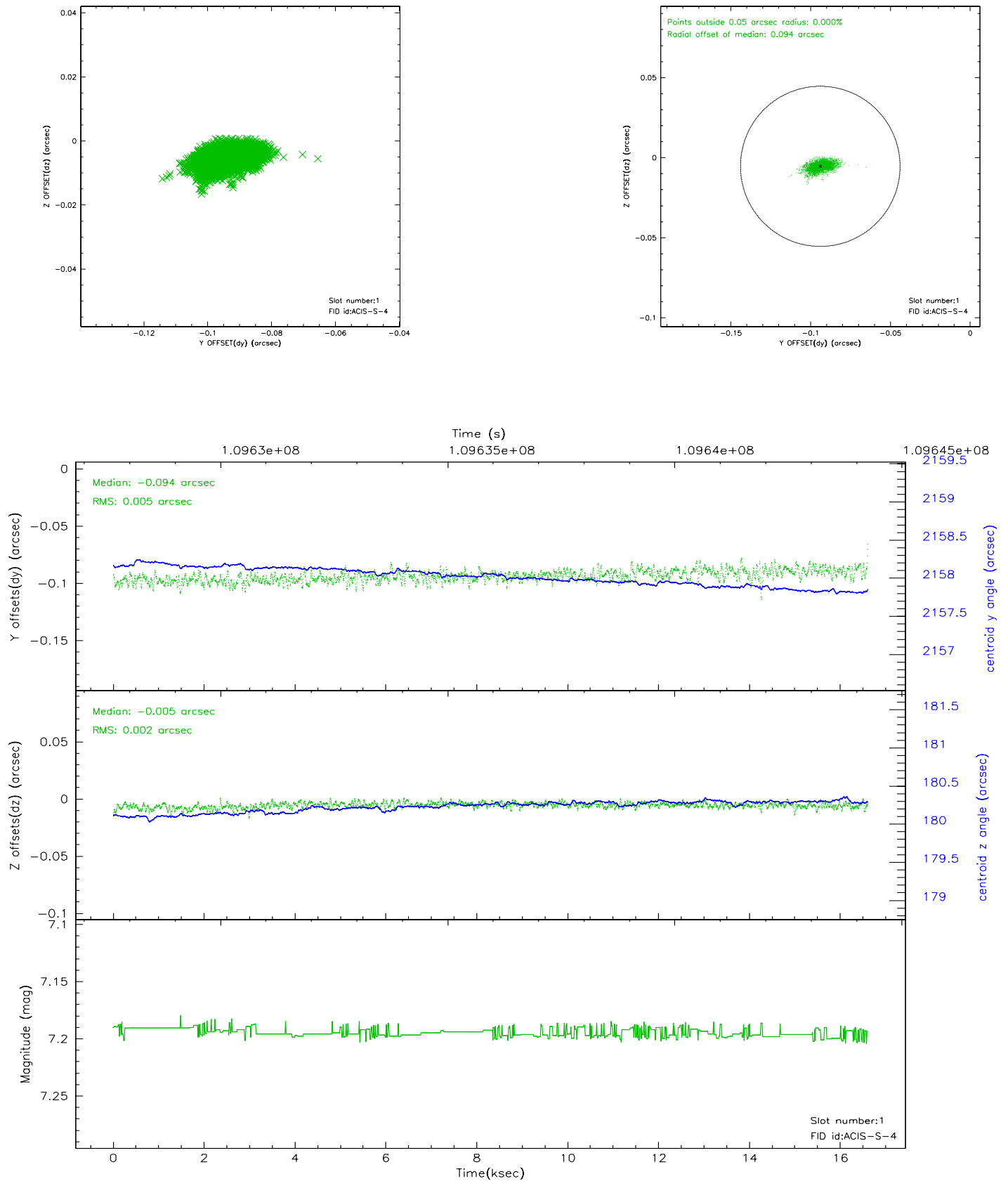


## 2.5 FID Slots

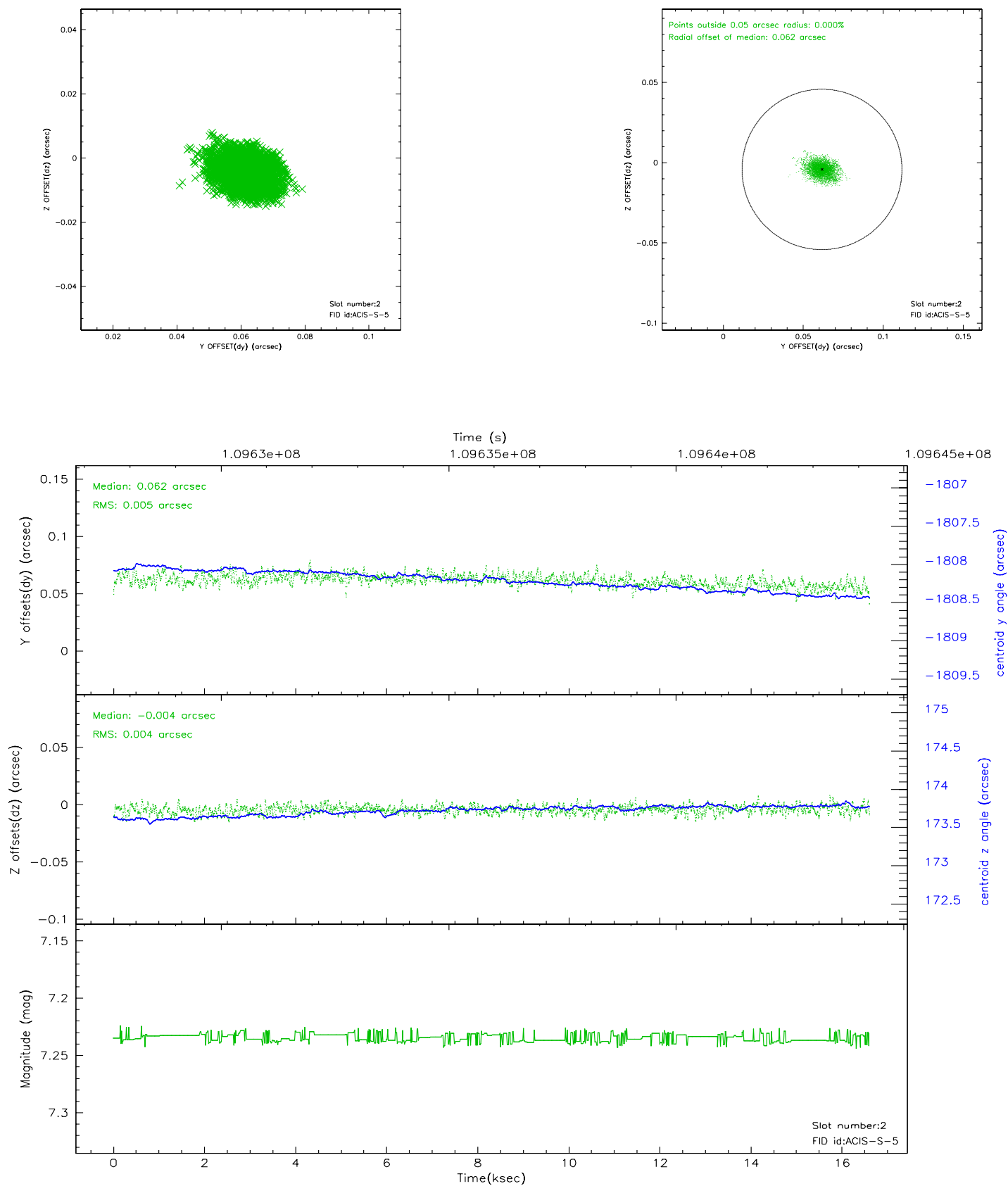
### 2.5.1 Slot 0



## 2.5.2 Slot 1

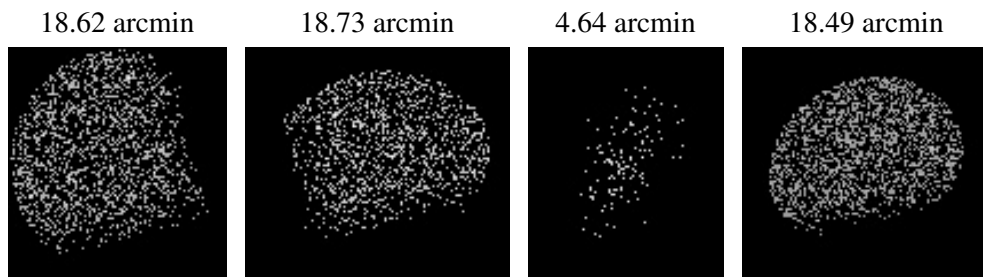


## 2.5.3 Slot 2





### 3 Point Sources



## A Summary

### A.1 Status

V&V Scientist	Beth Sundheim
V&V Date (YYYY-MM-DD)	2006.12.08
V&V Edition	1
V&V Disposition and Status	OK
V&V Charge Time	16.249

### A.2 Comments