

# V&V Reference Report

## L2 ASCDS Version : 8.4.5

Observation 1853 - L2 Version 7  
Chandra X-Ray Center

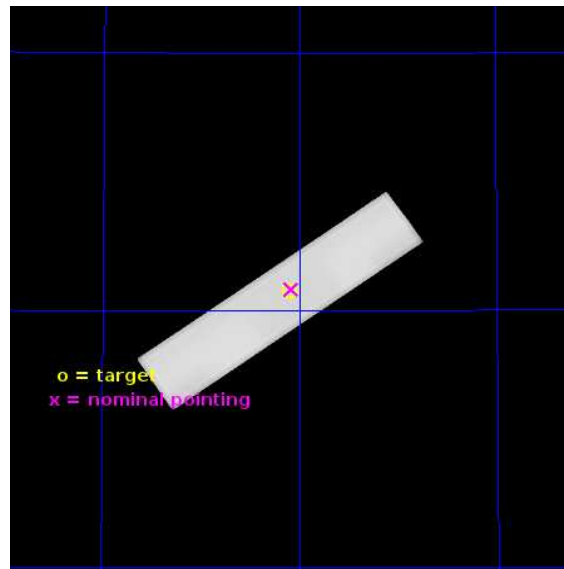
L2 Processing Date : Jun 28 2013

## Contents

<b>1</b>	<b>Front</b>	<b>2</b>
<b>2</b>	<b>OBI</b>	<b>3</b>
2.1	OBI . . . . .	3
2.1.1	Images . . . . .	3
2.1.2	Parameters . . . . .	4
2.1.3	Events . . . . .	4
2.2	Compared Parameters . . . . .	5
2.3	Aspect . . . . .	6
2.4	Star Slots . . . . .	9
2.4.1	Slot 3 . . . . .	9
2.4.2	Slot 4 . . . . .	10
2.4.3	Slot 5 . . . . .	11
2.4.4	Slot 6 . . . . .	12
2.4.5	Slot 7 . . . . .	13
2.5	FID Slots . . . . .	14
2.5.1	Slot 0 . . . . .	14
2.5.2	Slot 1 . . . . .	15
2.5.3	Slot 2 . . . . .	16
<b>A</b>	<b>Summary</b>	<b>17</b>
A.1	Status . . . . .	17
A.2	Comments . . . . .	17

# 1 Front

seq_num	400114	Sequence number
obs_id	1853	Observation id
title	THE BINARY MS-PULSAR PSR J0218+4232 AND ITS PROBABLE SYNCHROTRON NEBULA	Proposal title
observer	Mr. Lucien Kuiper	Principal investigator
object	PSR J0218+4232	Source name
ra_targ	34.52625	Observer's specified target RA [deg]
dec_targ	42.538167	Observer's specified target Dec [deg]
ra_nom	34.521009711727	Nominal RA [deg]
dec_nom	42.541114636793	Nominal Dec [deg]
roll_nom	145.04328470989	Nominal Roll [deg]
revision	7	Processing version of data
ontime	73541.702775404	[s]
livetime	72095.508637593	Ontime multiplied by DTCOR
l2events	3130983	Number of level 2 events

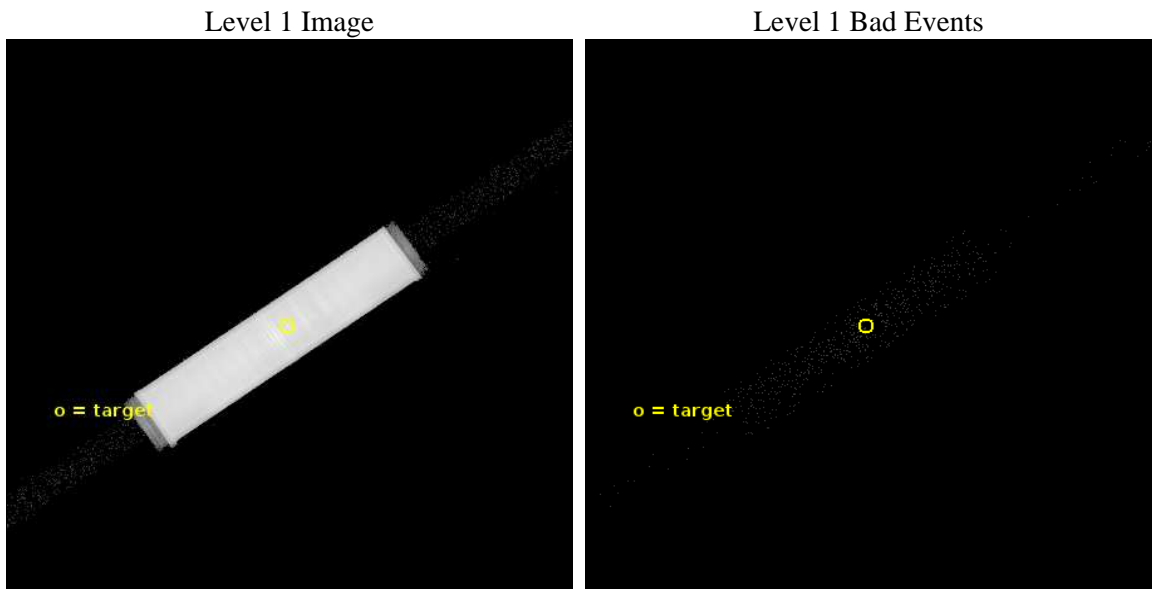




## 2 OBI

### 2.1 OBI

#### 2.1.1 Images



### 2.1.2 Parameters

obi_num	0	Obi number	sched_exp_time	73400.000000	[s] Scheduled observation exposure time
ascdsver	10	Processing system revision	ontime	73541.702776402	[s]
caldsver	4.5.7	&#160	l1events	4308670	Number of level 1 events
date	2013-06-28T23:22:17	Date and time of file creation			
revision	6	Processing version of data			

### 2.1.3 Events

Level 1 Events

	segment 1	segment 2	segment 3
level 1 events	5862	4301348	1460
rejected events	1433	29774	1452
rejected %	24%	0%	99%

## 2.2 Compared Parameters

Parameter	Planned	Actual
Instrument	HRC	HRC
Detector	HRC-S	HRC-S
Grating	NONE	NONE
Data mode	OBSERVING	OBSERVING
Observation mode	POINTING	POINTING
[deg] Pointing RA	34.559936	34.52100971172678
[deg] Pointing Dec	42.539900	42.54111463679268
[deg] Pointing Roll	144.949635	145.043284709892
[mm] SIM focus pos	-1.429586	-1.428180813131781
[mm] SIM defocus	0.1037507710433287	0.1051558262725154
[mm] SIM translation stage pos	250.455976	250.466033080201
[mm] SIM translation stage offset	0	-0.01005468664627074
[s] Observation start time (MET)	87138097.184000	87137247.126352
Observation start date	2000-10-05T13:00:33	2000-10-05T12:47:27
[s] Observation end time (MET)	87211497.184000	87212325.816686
Observation end date	2000-10-06T09:23:53	2000-10-06T09:38:45

Parameter	Planned	Actual
Obspar format version number	7	7
Obspar file type	PREDICTED	ACTUAL
Obspar update status	NONE	UPDATED

## 2.3 Aspect

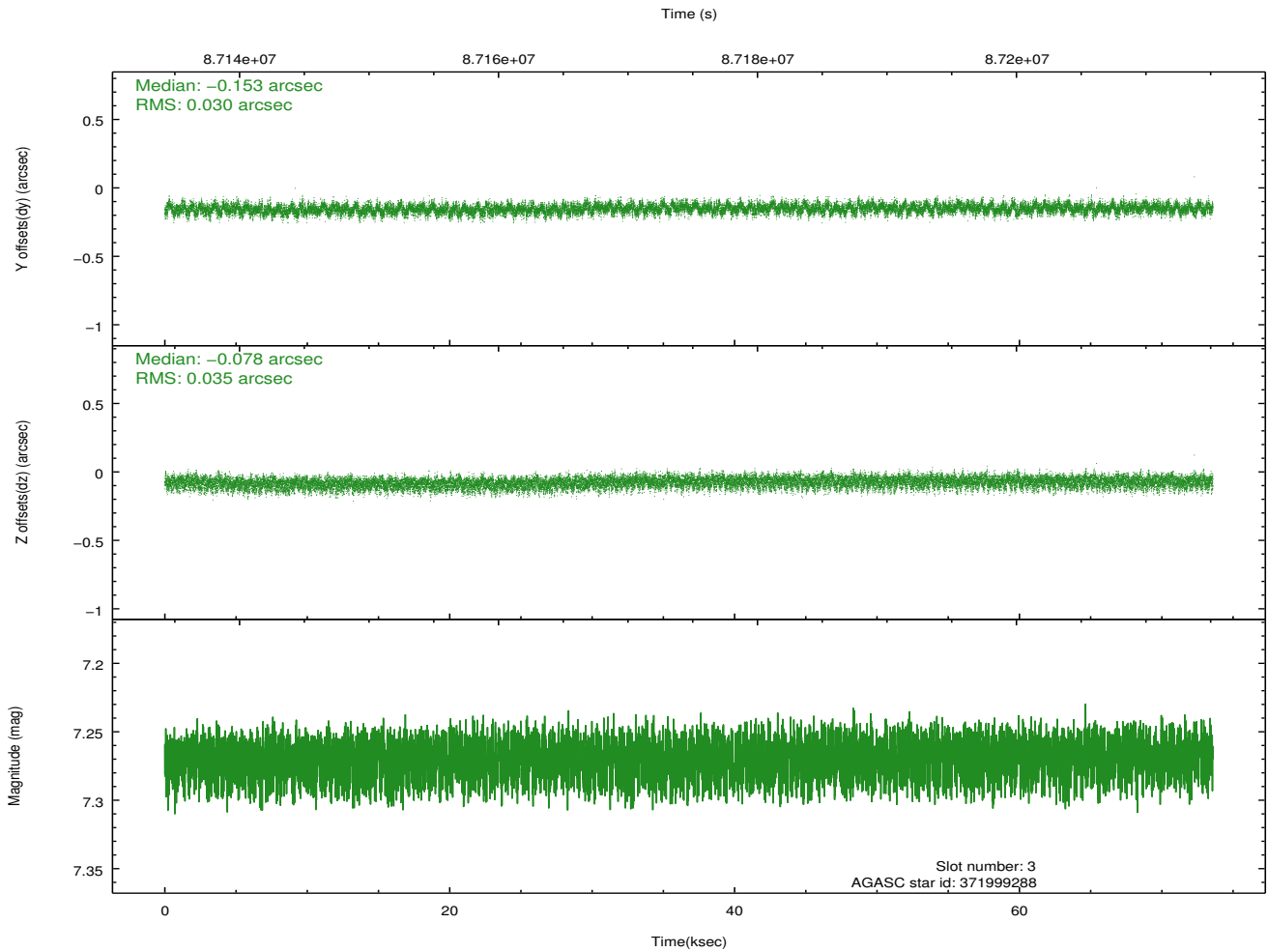
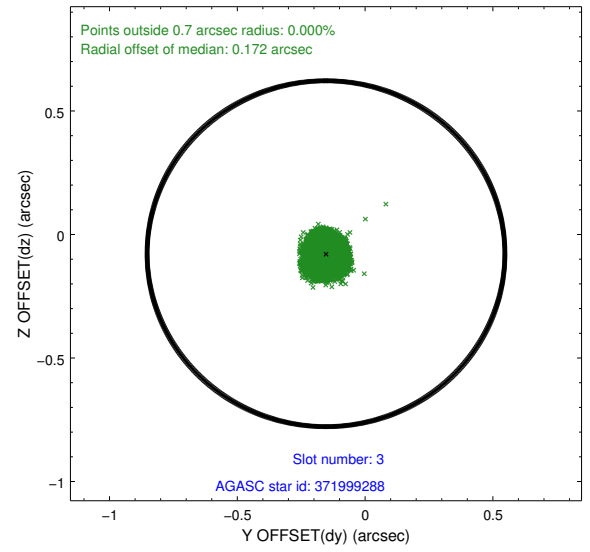
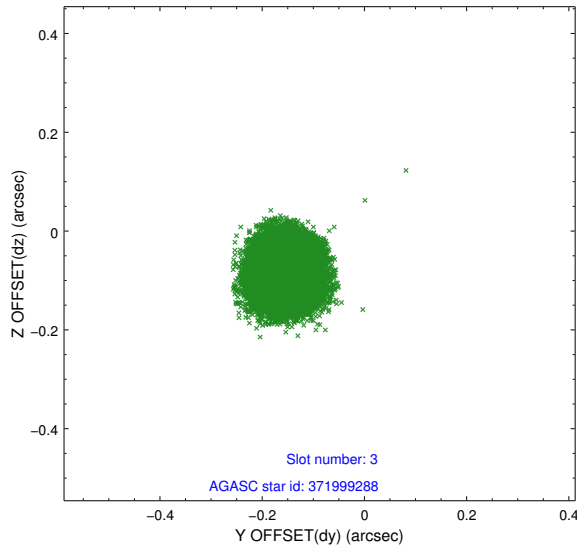


### Slot Statistics

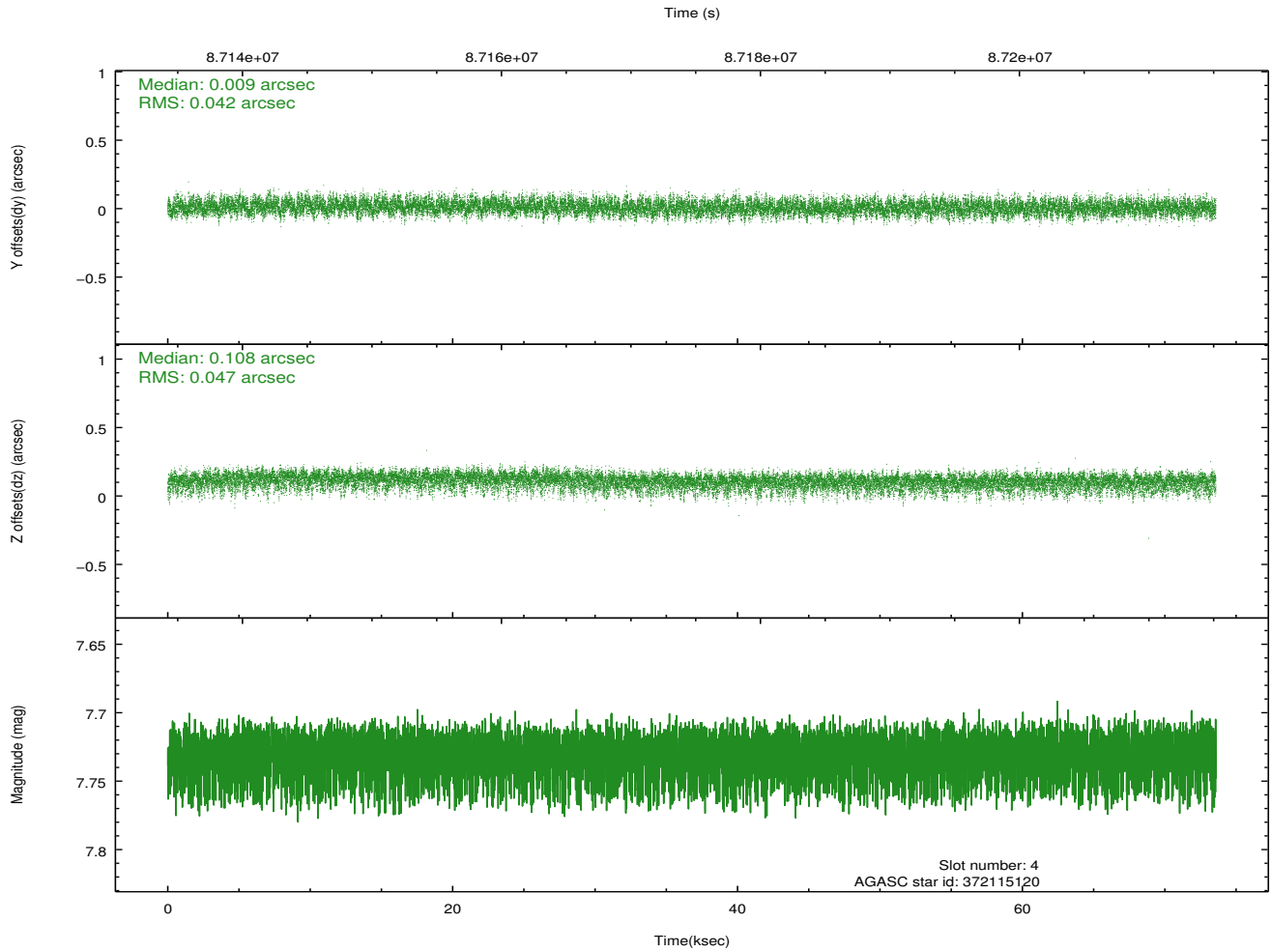
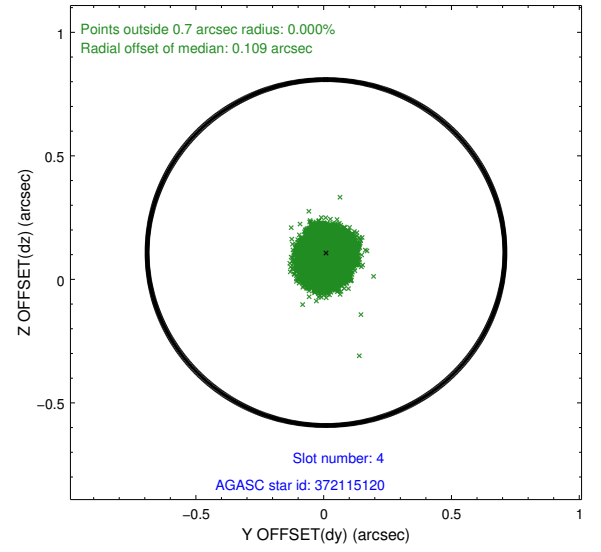
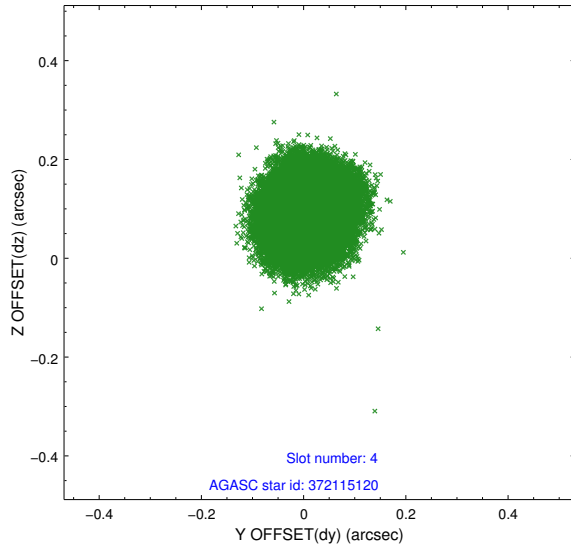
slot	status	id	mag	n_pts	med_dy	med_dz	dr1	dr2	ra	dec	mean_y	mean_z
0	FID	HRC-S-2	7.01	17947	0.115	-0.116	0.011	0.020	0.000000	0.000000	1242.54	-444.81
1	FID	HRC-S-3	7.03	17947	0.138	-0.107	0.014	0.024	0.000000	0.000000	-1159.76	577.37
2	FID	HRC-S-4	6.98	17947	0.150	-0.072	0.014	0.022	0.000000	0.000000	1241.10	579.99
3	GUIDE	371999288	7.27	35893	-0.153	-0.078	0.049	0.078	33.938913	42.468266	1205.61	1153.77
4	GUIDE	372115120	7.73	35878	0.009	0.108	0.068	0.110	35.261123	42.943957	-672.29	-2257.75
5	GUIDE	371995224	8.44	35890	0.040	-0.071	0.058	0.096	34.007826	42.696854	1523.51	372.92
6	GUIDE	372125032	8.73	35889	0.090	0.050	0.080	0.123	35.265346	42.773671	-1037.64	-1765.31
7	GUIDE	371995152	8.93	35888	0.012	-0.003	0.068	0.114	34.346568	42.362602	98.80	848.31

## 2.4 Star Slots

### 2.4.1 Slot 3

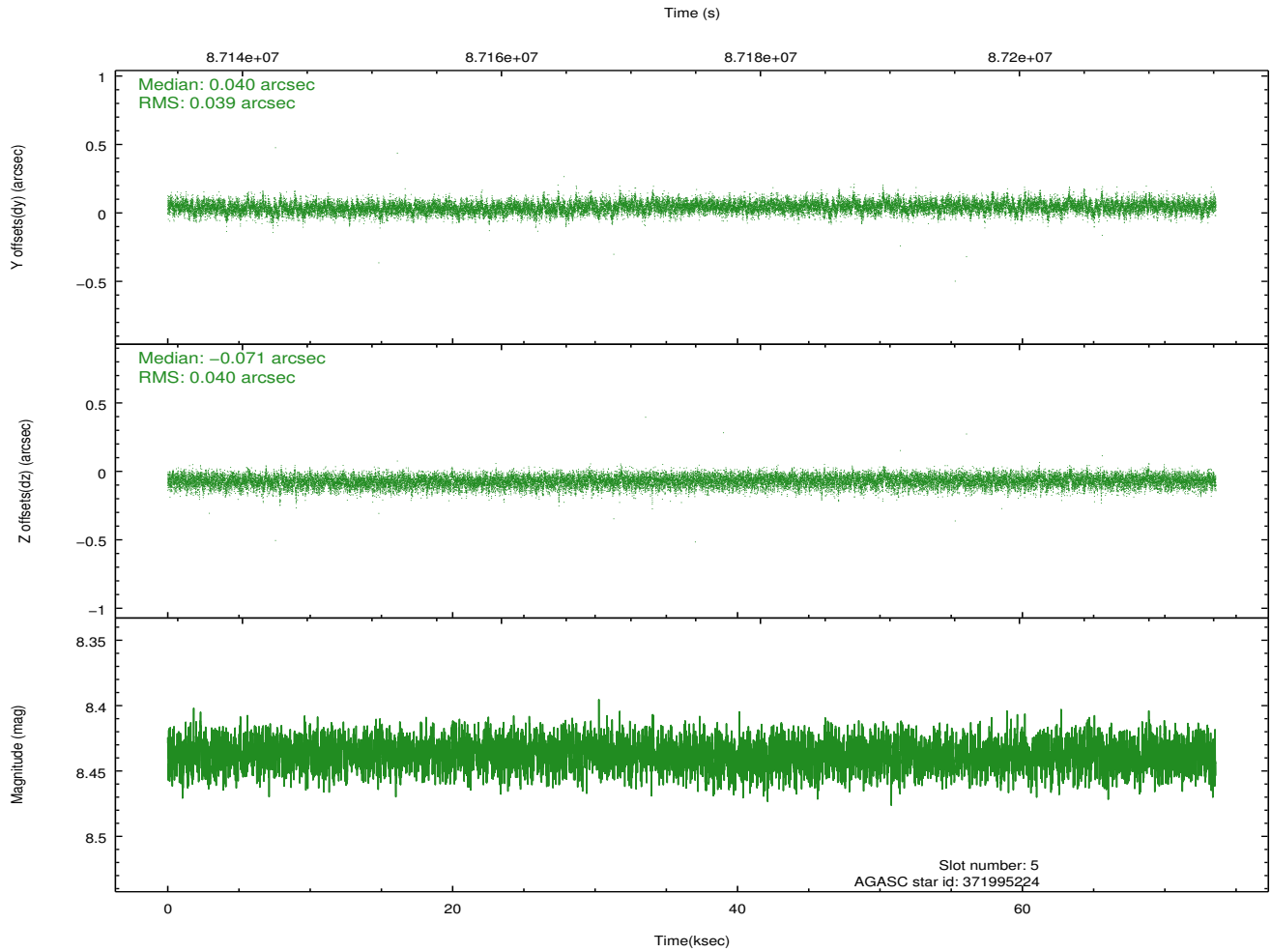
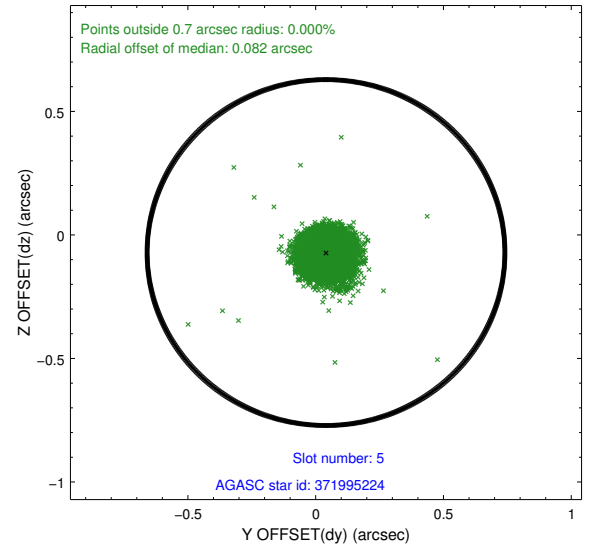
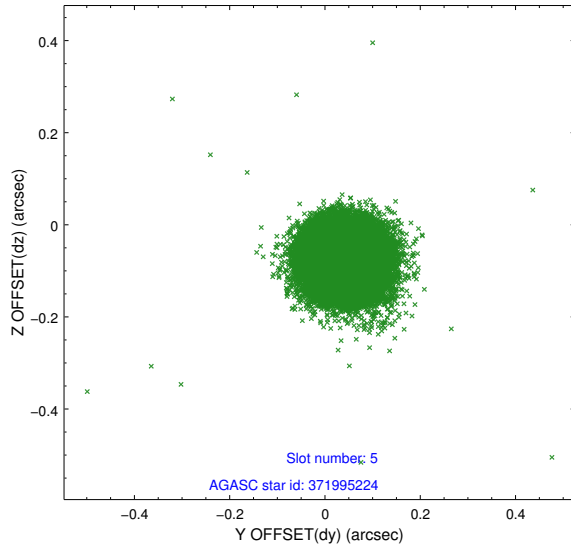


## 2.4.2 Slot 4

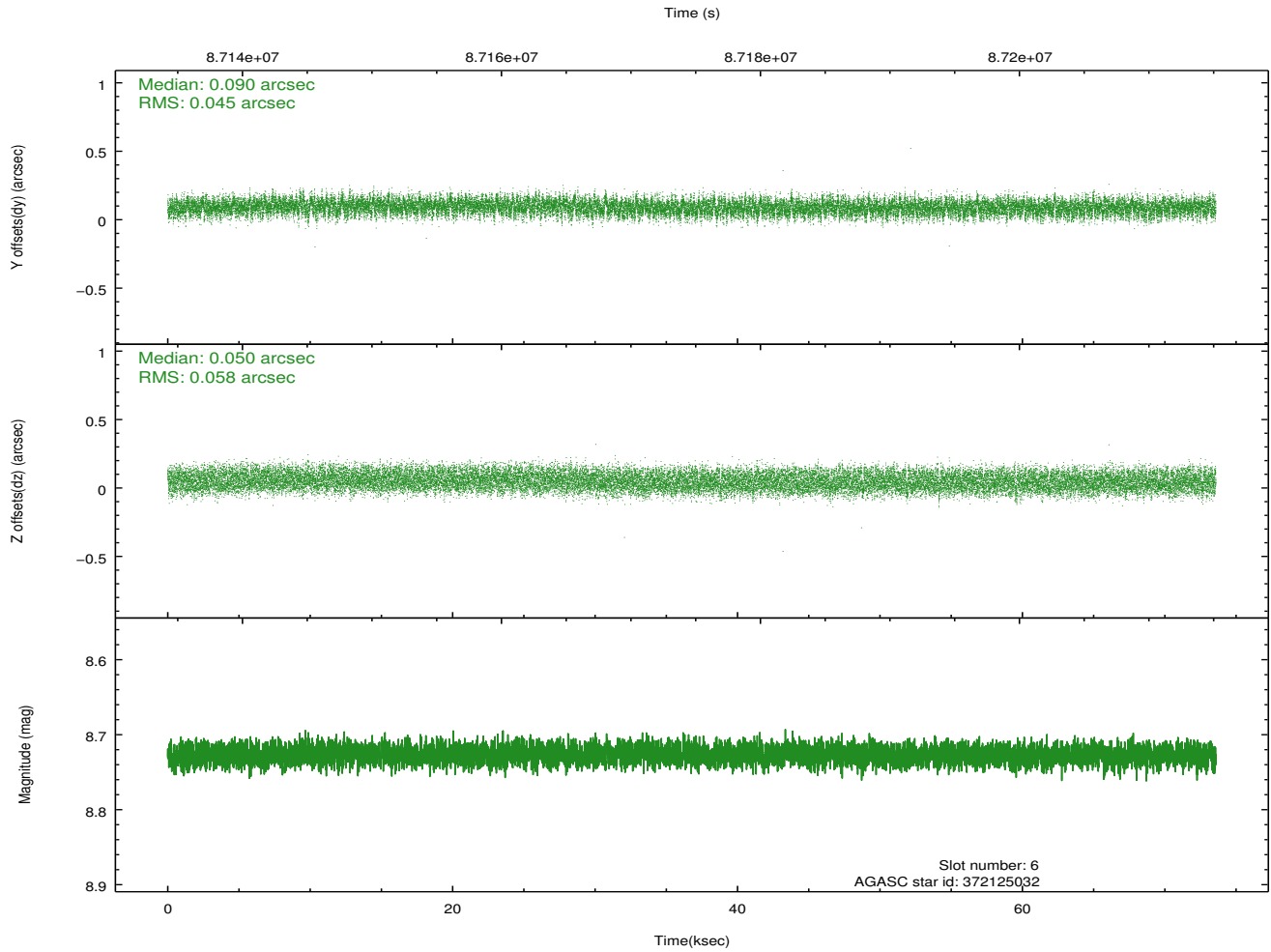
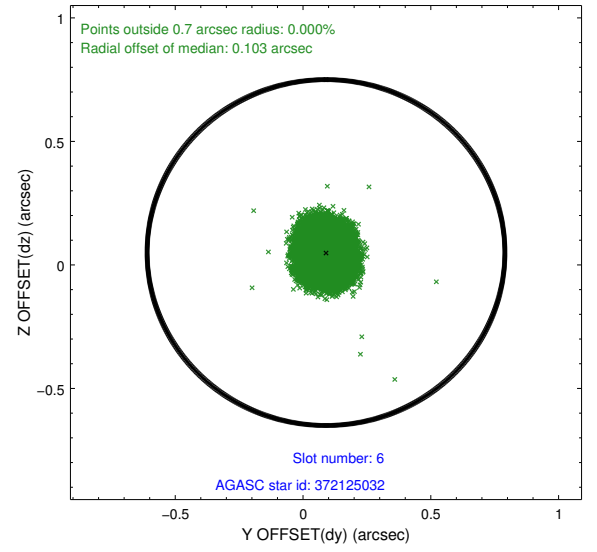
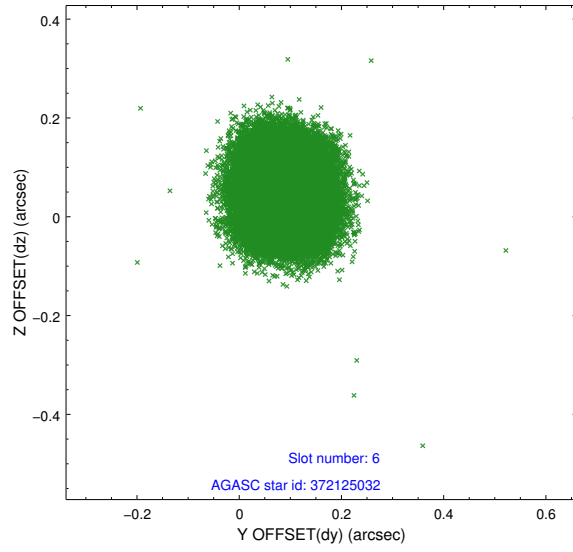




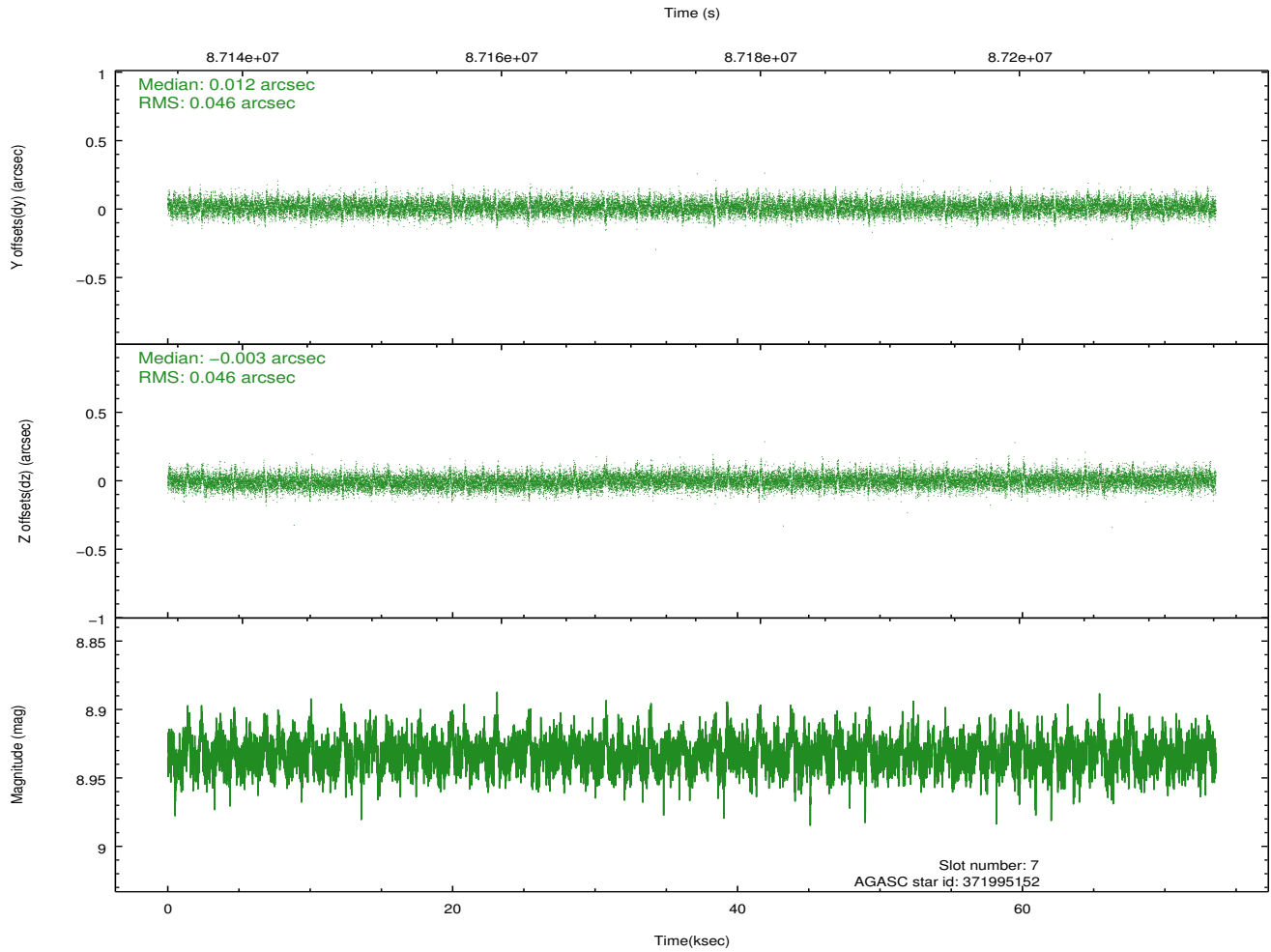
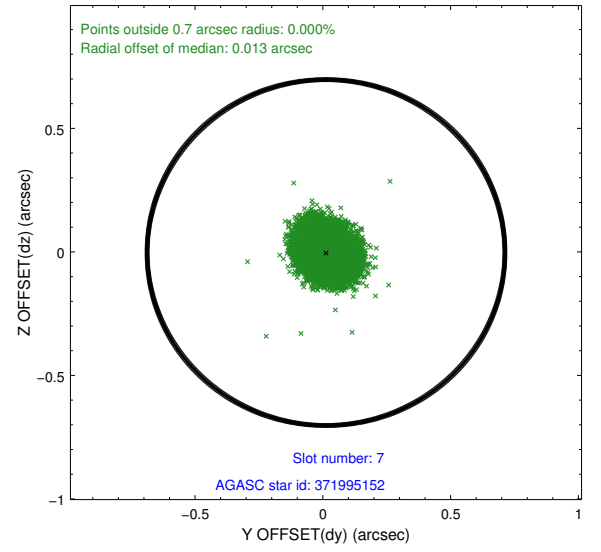
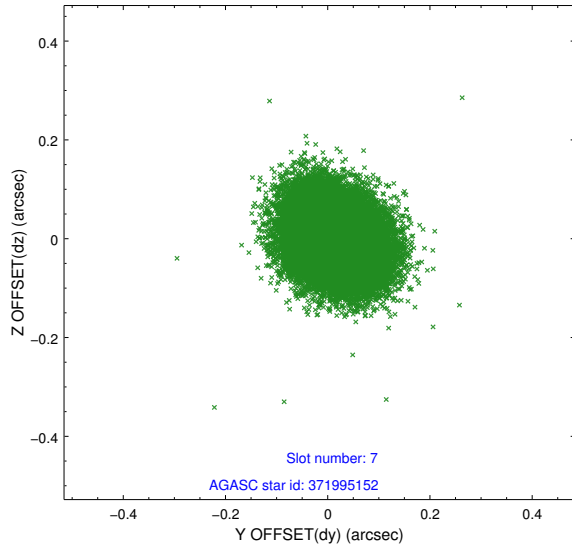
### 2.4.3 Slot 5



## 2.4.4 Slot 6

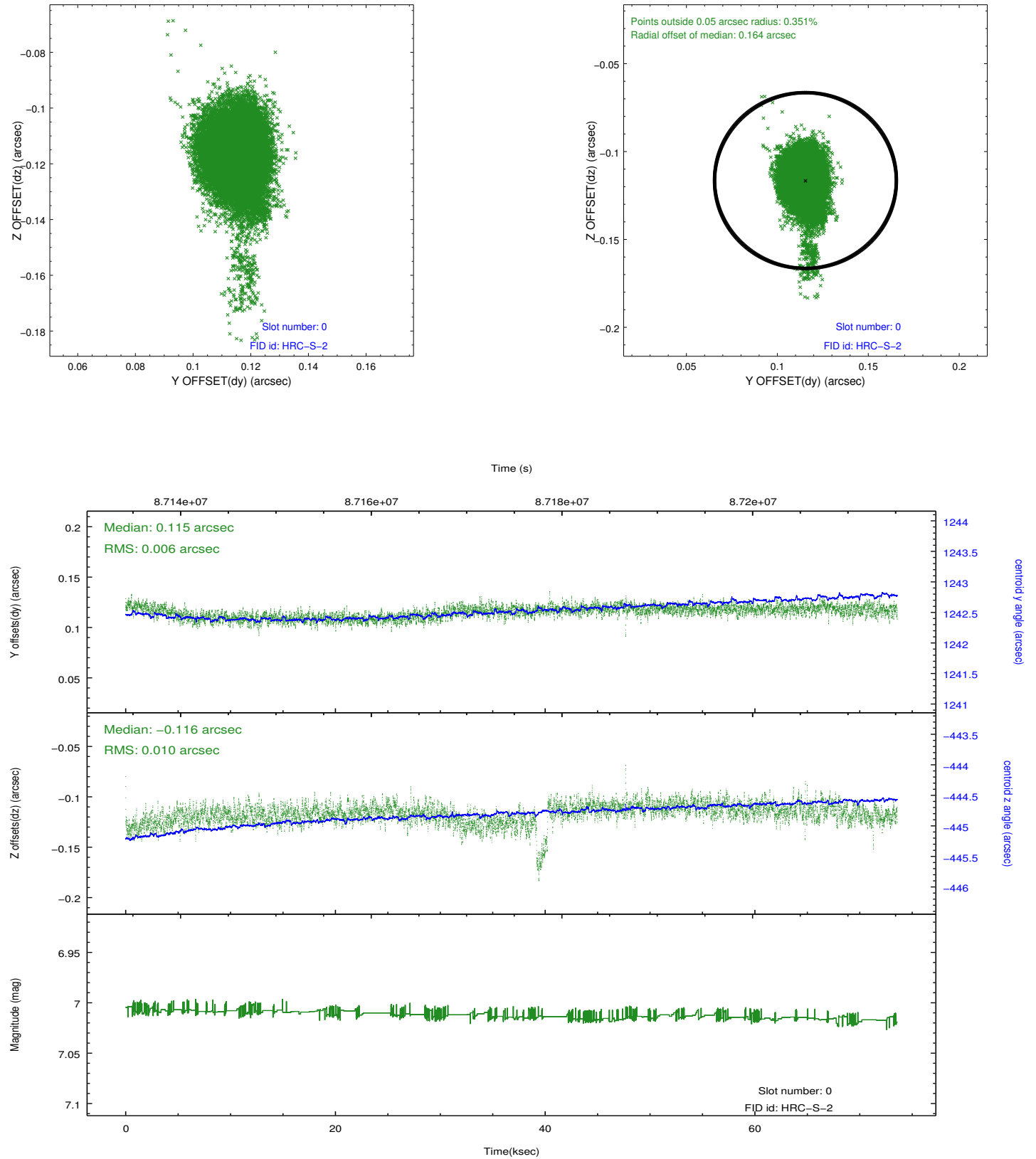


## 2.4.5 Slot 7

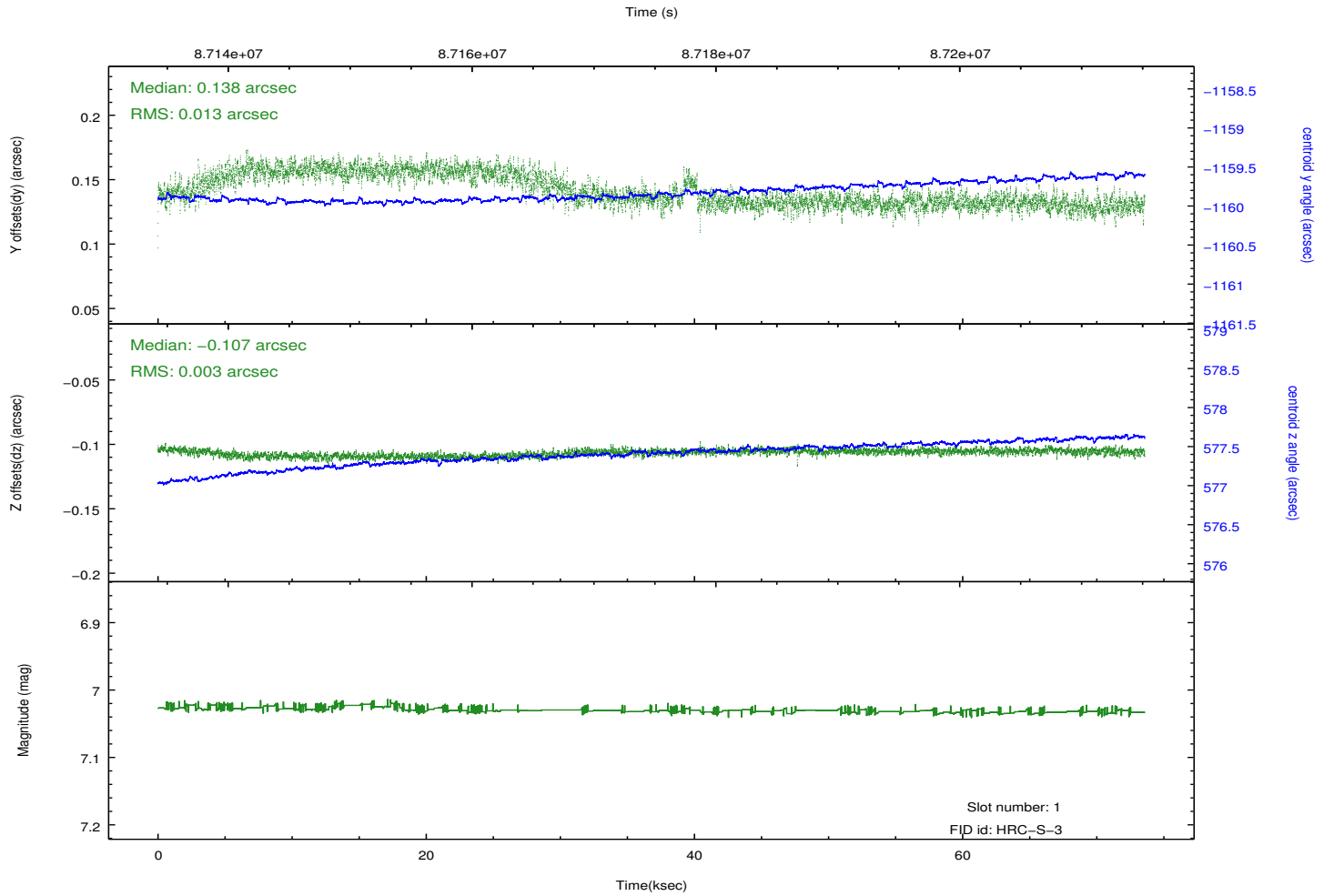
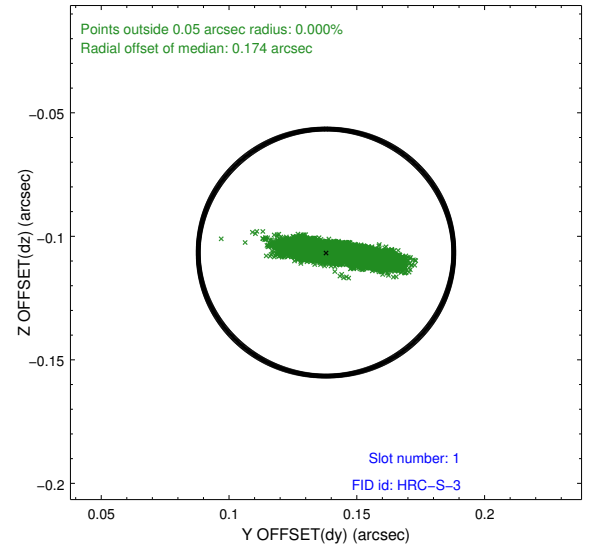
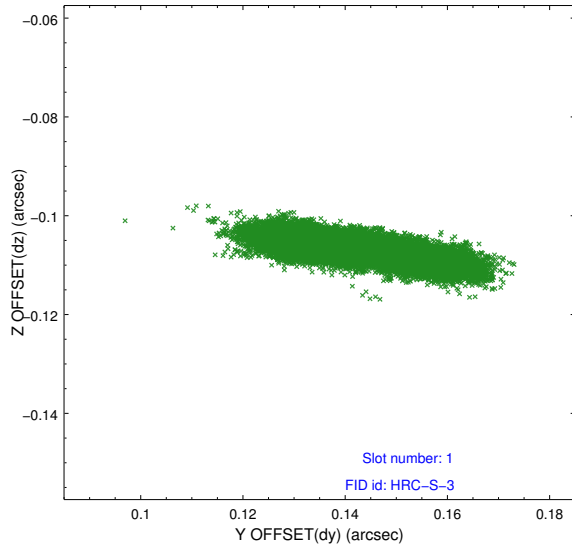


## 2.5 FID Slots

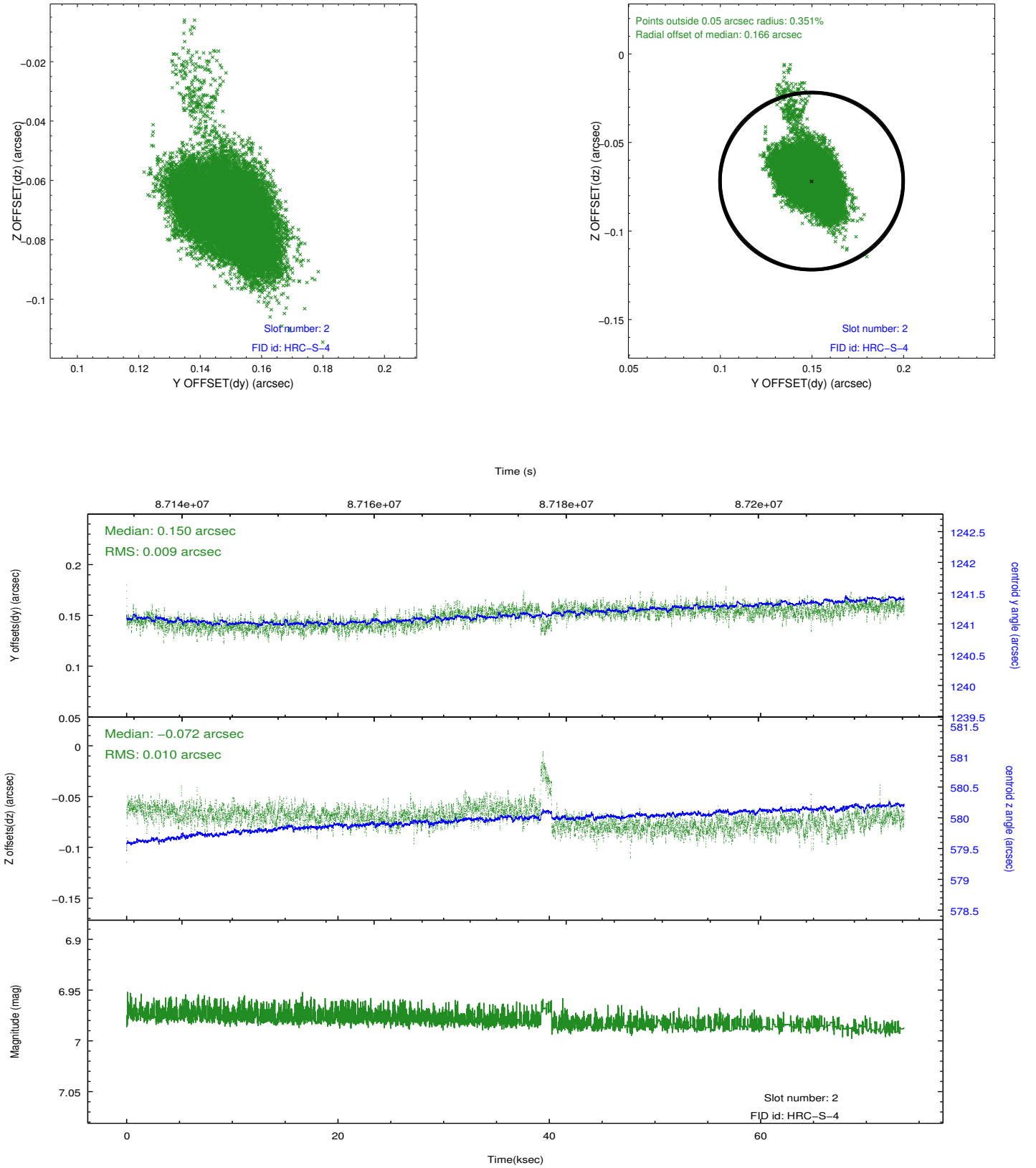
### 2.5.1 Slot 0



## 2.5.2 Slot 1



### 2.5.3 Slot 2



## A Summary

### A.1 Status

V&V Scientist	Beth Sundheim
V&V Date (YYYY-MM-DD)	2013.07.02
V&V Edition	1
V&V Disposition and Status	OK
V&V Charge Time	73.494

### A.2 Comments