

V&V Reference Report

L2 ASCDS Version : 7.6.10

Observation 1853 - L2 Version 001
Chandra X-Ray Center

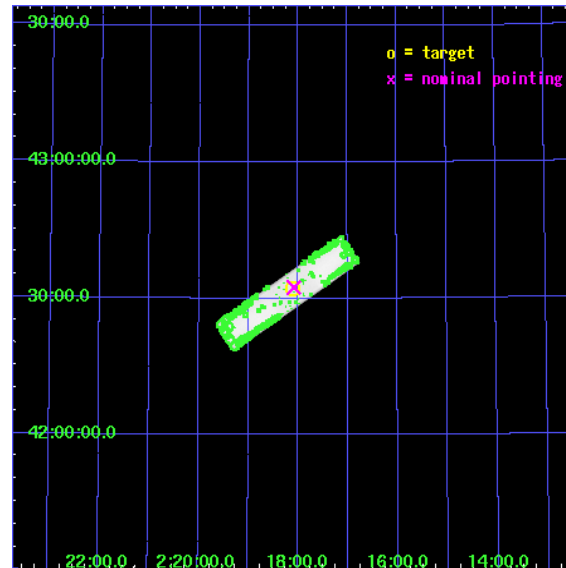
L2 Processing Date : Jun 9 2007

Contents

1	Front	2
2	OBI	3
2.1	OBI	3
2.1.1	Images	3
2.1.2	Parameters	4
2.1.3	Events	4
2.2	Compared Parameters	5
2.3	Aspect	6
2.4	Star Slots	9
2.4.1	Slot 3	9
2.4.2	Slot 4	10
2.4.3	Slot 5	11
2.4.4	Slot 6	12
2.4.5	Slot 7	13
2.5	FID Slots	14
2.5.1	Slot 0	14
2.5.2	Slot 1	15
2.5.3	Slot 2	16
3	Point Sources	17
A	Summary	18
A.1	Status	18
A.2	Comments	18

1 Front

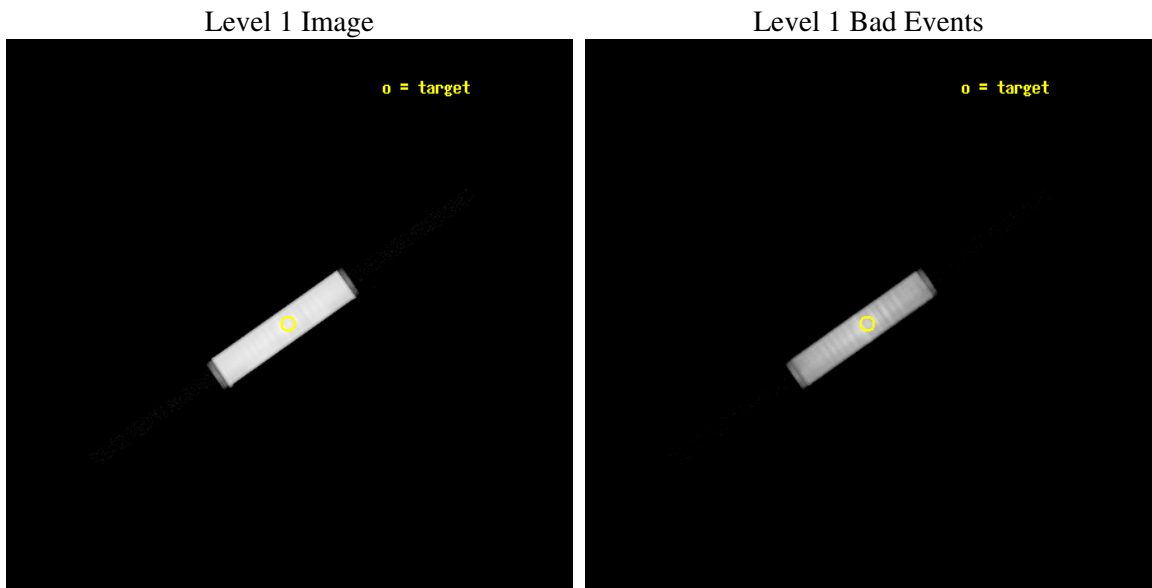
seq_num	400114
obs_id	1853
title	THE BINARY MS-PULSAR PSR J0218+4232 AND ITS PROBABLE SYNCHROTRON NEBULA
observer	Mr. Lucien Kuiper
object	PSR J0218+4232
ra_targ	34.52625
dec_targ	42.538167
ra_nom	34.521009711727
dec_nom	42.541114636793
roll_nom	145.04328470989
revision	5
ontime	73541.702775404
livetime	73250.552359608
l2events	2962948



2 OBI

2.1 OBI

2.1.1 Images



2.1.2 Parameters

obi_num	0
ascdsver	7.6.10
caldbver	3.4.0
date	2007-06-09T21:00:30
revision	4

sched_exp_time	73400.000000
ontime	73541.702776402
l1events	4308670

2.1.3 Events

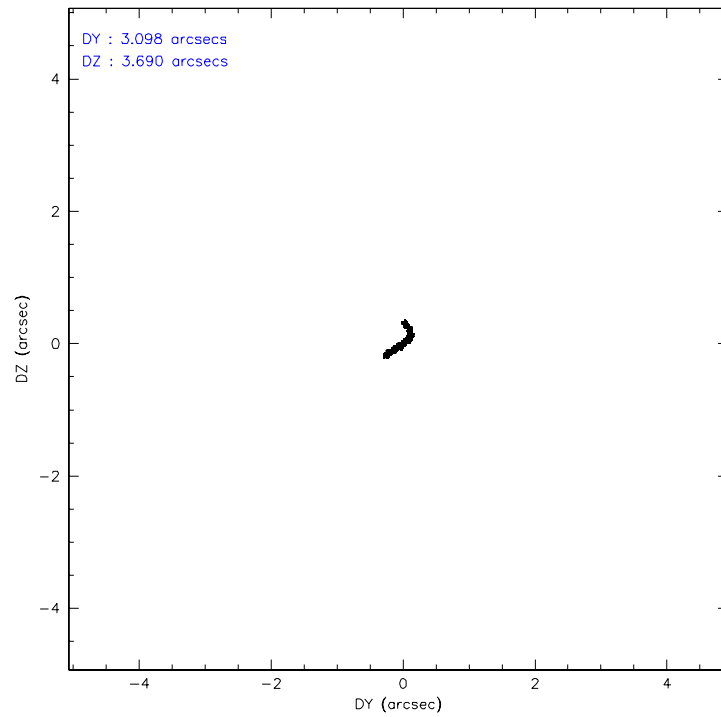
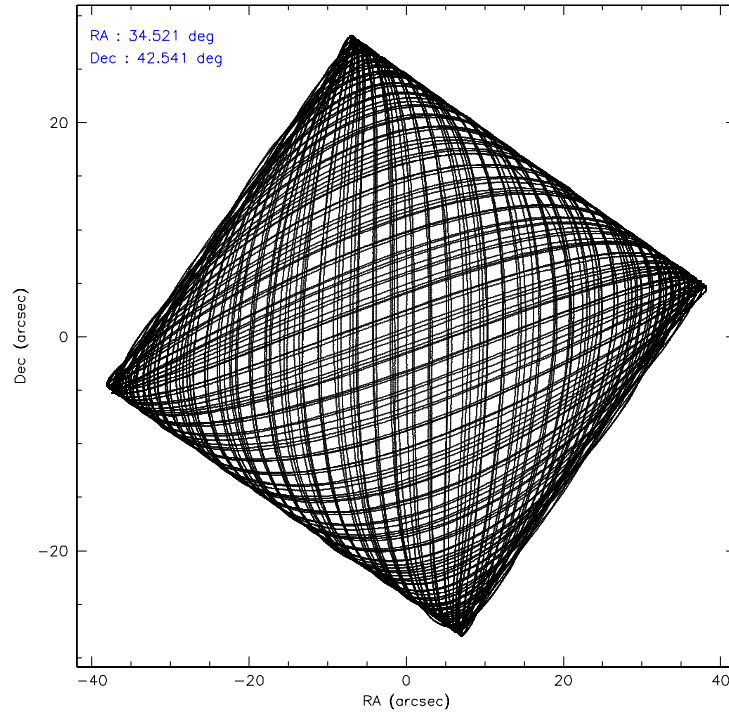
Level 1 Events

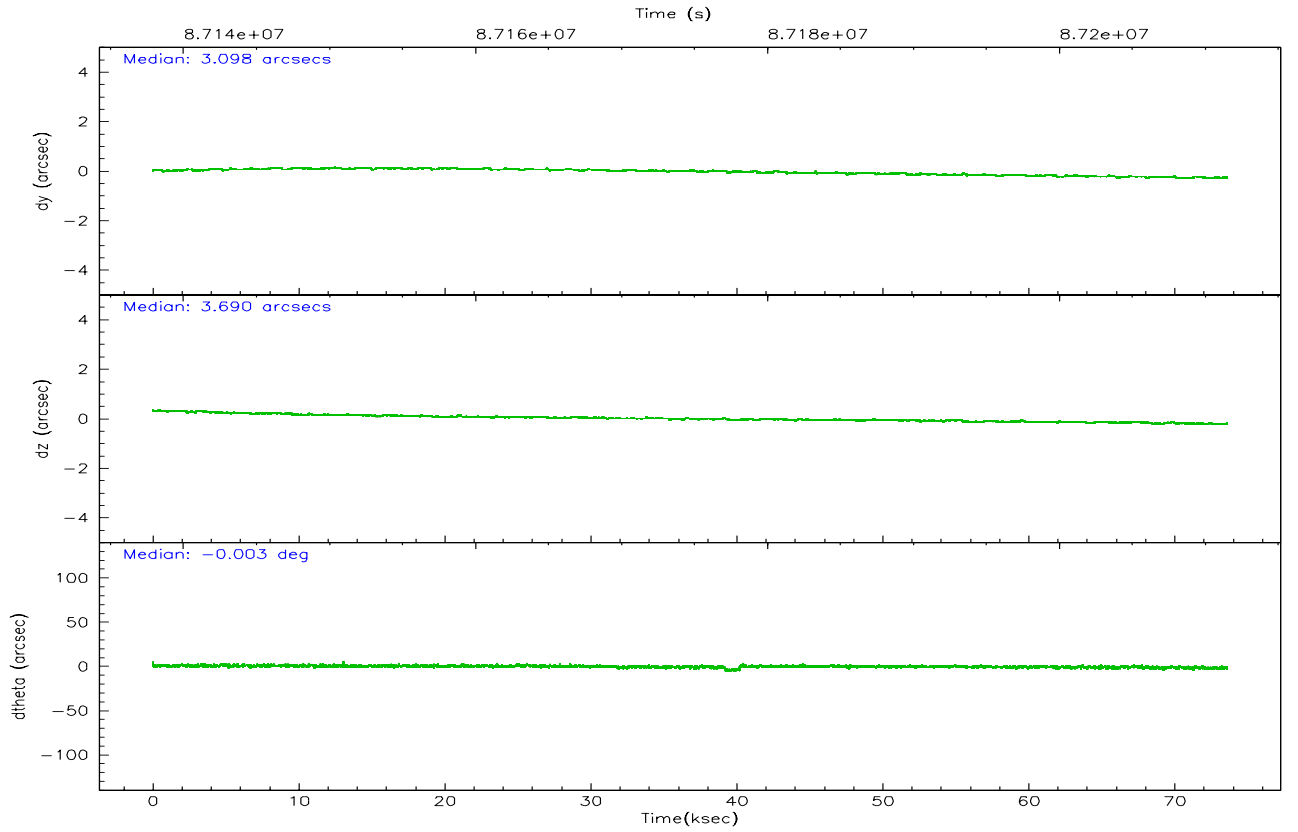
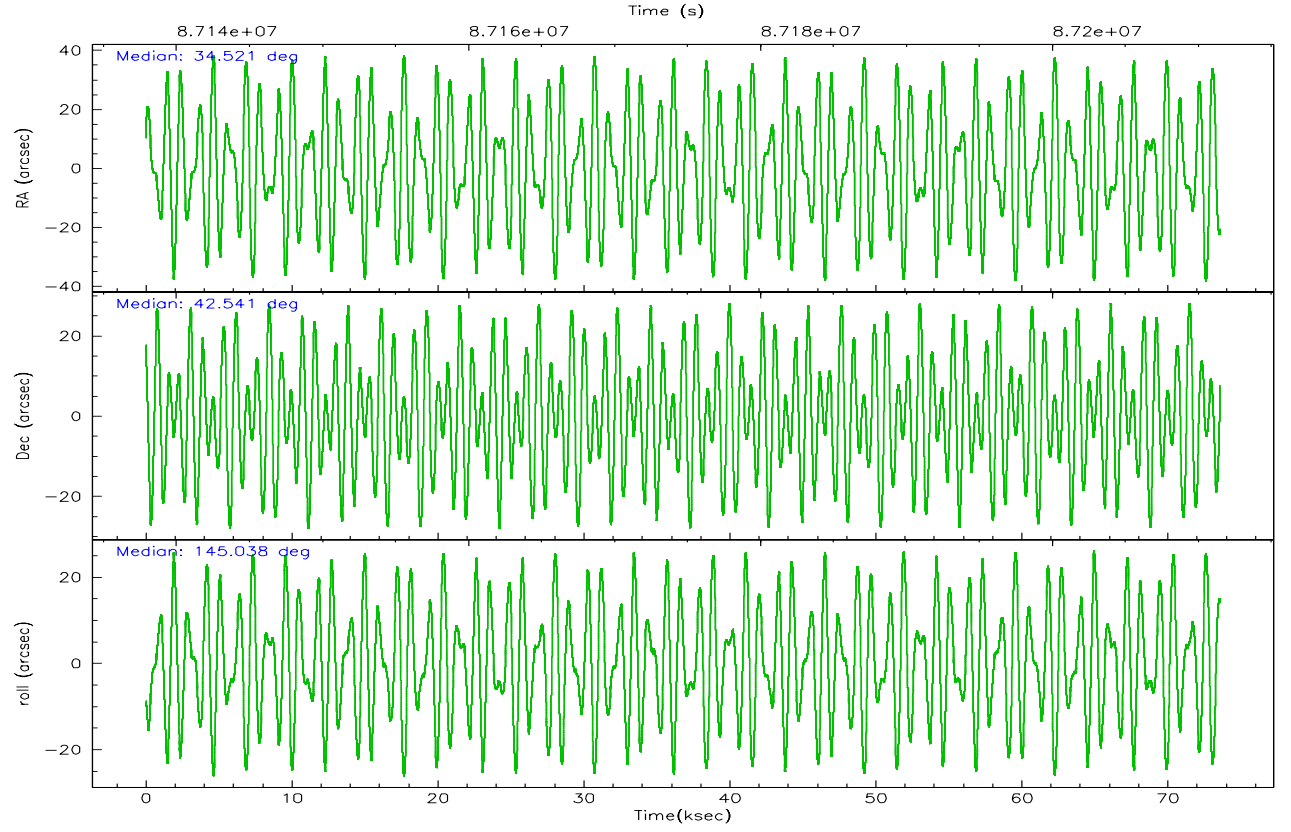
	segment 1	segment 2	segment 3
level 1 events	5862	4301348	1460
rejected events	5558	1181216	1460
rejected %	94%	27%	100%

2.2 Compared Parameters

Parameter	Planned	Actual	Parameter	Planned	Actual
Instrument	HRC	HRC	Obspar format version number	6	6
Detector	HRC-S	HRC-S	Obspar file type	PREDICTED	ACTUAL
Grating	NONE	NONE	Obspar update status	NONE	UPDATED
Data mode	OBSERVING	OBSERVING			
Observation mode	POINTING	POINTING			
Pointing RA	34.559936	34.52100971172681			
Pointing Dec	42.539900	42.54111463679268			
Pointing Roll	144.949635	145.0432847098919			
SIM focus pos (mm)	-1.429586	-1.428180813131781			
SIM defocus (mm)	0.1037507710433287	0.1051558262725154			
SIM translation stage pos (mm)	250.455976	250.466033080201			
SIM translation stage offset (mm)	0	-0.01005468664627074			
Observation start time	87138097.184000	87137247.126352			
Observation start date	2000-10-05T13:00:33	2000-10-05T12:47:27			
Observation end time	87211497.184000	87212325.816686			
Observation end date	2000-10-06T09:23:53	2000-10-06T09:38:45			

2.3 Aspect



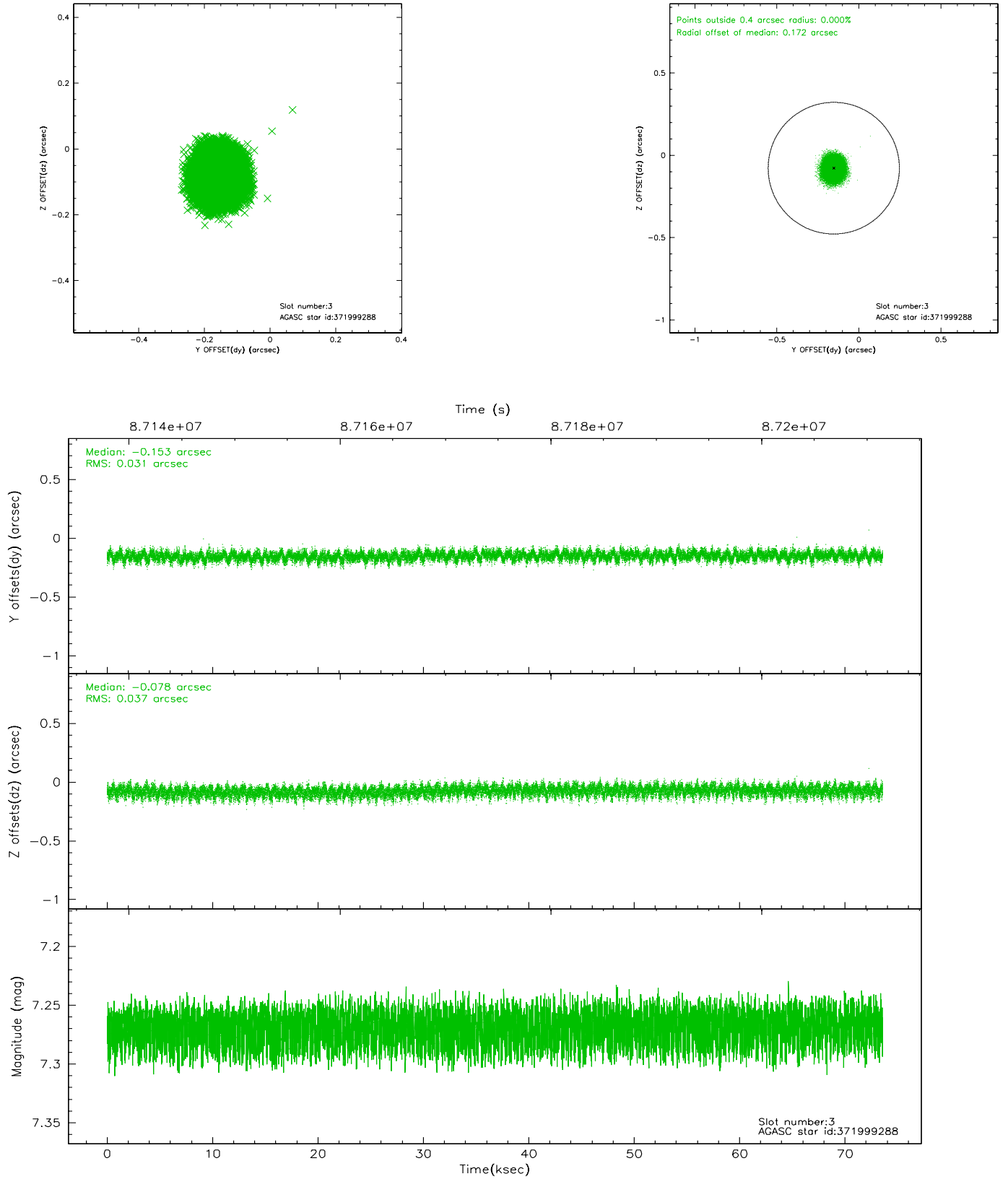


Slot Statistics

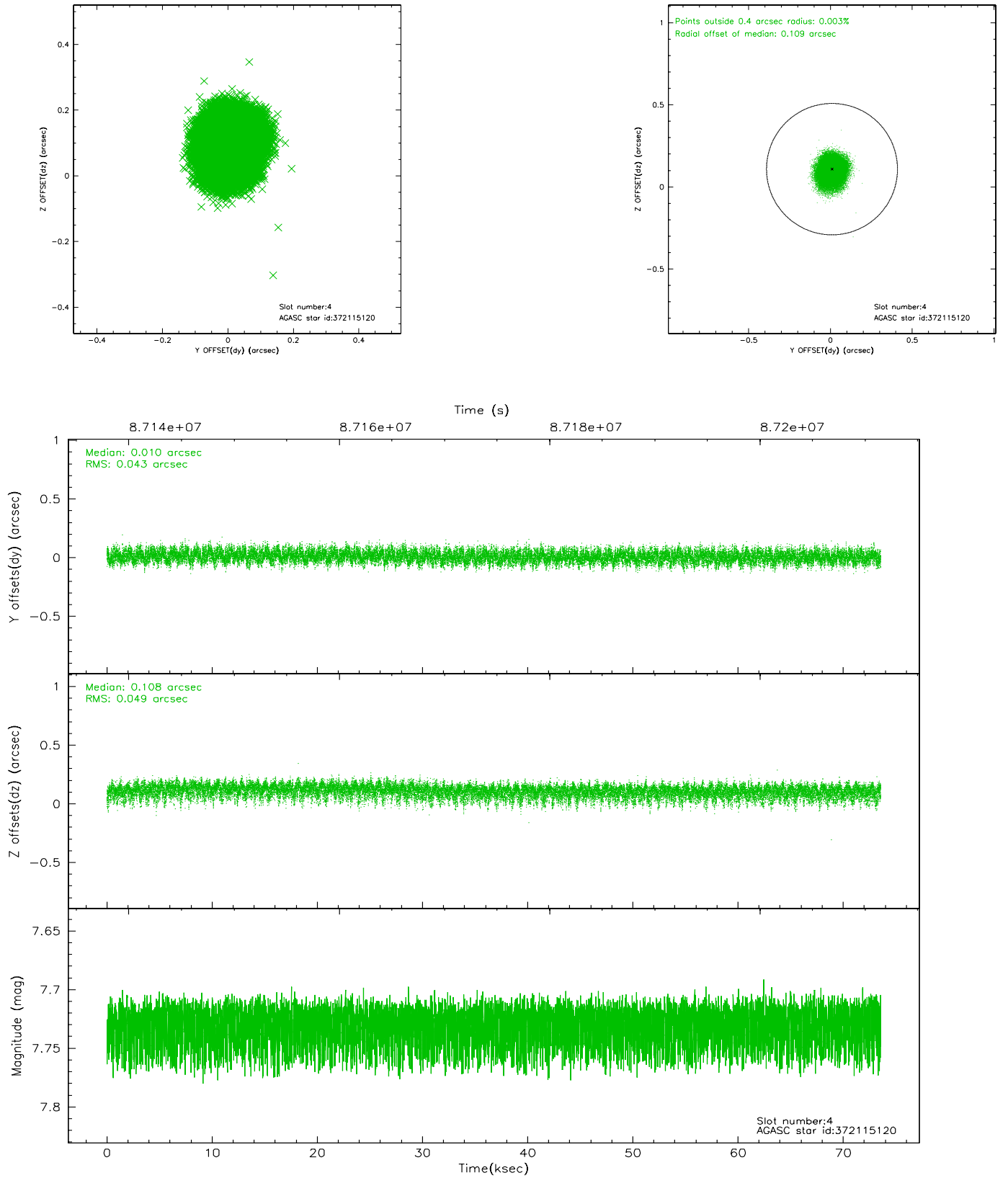
slot	status	id	mag	n_pts	med_dy	med_dz	dr1	dr2	ra	dec	mean_y	mean_z
0	FID	HRC-S-2	7.01	17947	0.115	-0.116	0.011	0.020	0.000000	0.000000	1242.54	-444.81
1	FID	HRC-S-3	7.03	17947	0.138	-0.107	0.014	0.024	0.000000	0.000000	-1159.76	577.37
2	FID	HRC-S-4	6.98	17947	0.150	-0.072	0.014	0.022	0.000000	0.000000	1241.10	579.99
3	GUIDE	371999288	7.27	35893	-0.153	-0.078	0.052	0.083	33.938913	42.468266	1205.61	1153.77
4	GUIDE	372115120	7.73	35878	0.010	0.108	0.069	0.113	35.261123	42.943957	-672.29	-2257.75
5	GUIDE	371995224	8.44	35890	0.040	-0.072	0.060	0.098	34.007826	42.696854	1523.51	372.92
6	GUIDE	372125032	8.73	35889	0.090	0.050	0.081	0.125	35.265346	42.773671	-1037.64	-1765.31
7	GUIDE	371995152	8.93	35888	0.013	-0.002	0.070	0.116	34.346568	42.362602	98.80	848.31

2.4 Star Slots

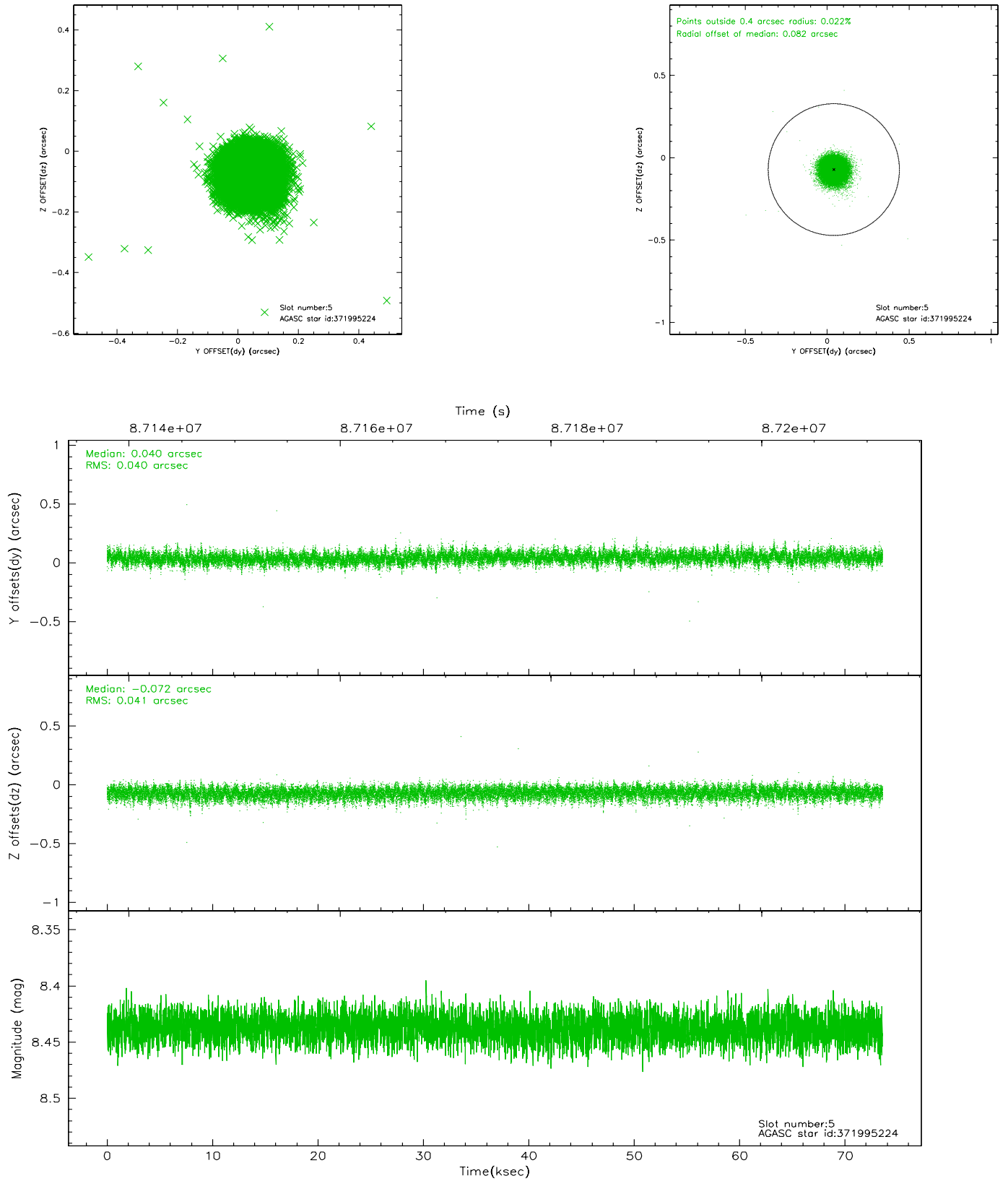
2.4.1 Slot 3



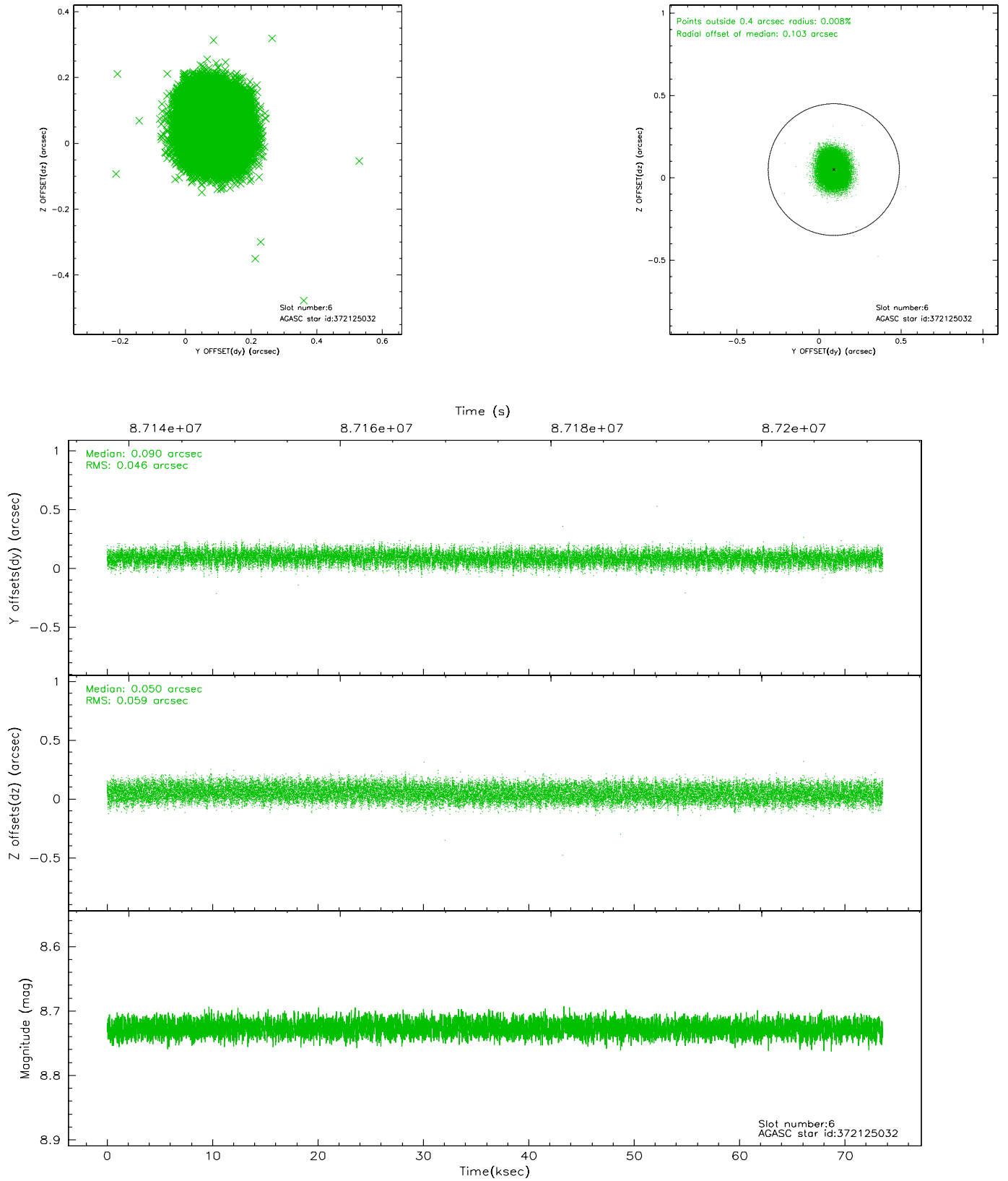
2.4.2 Slot 4



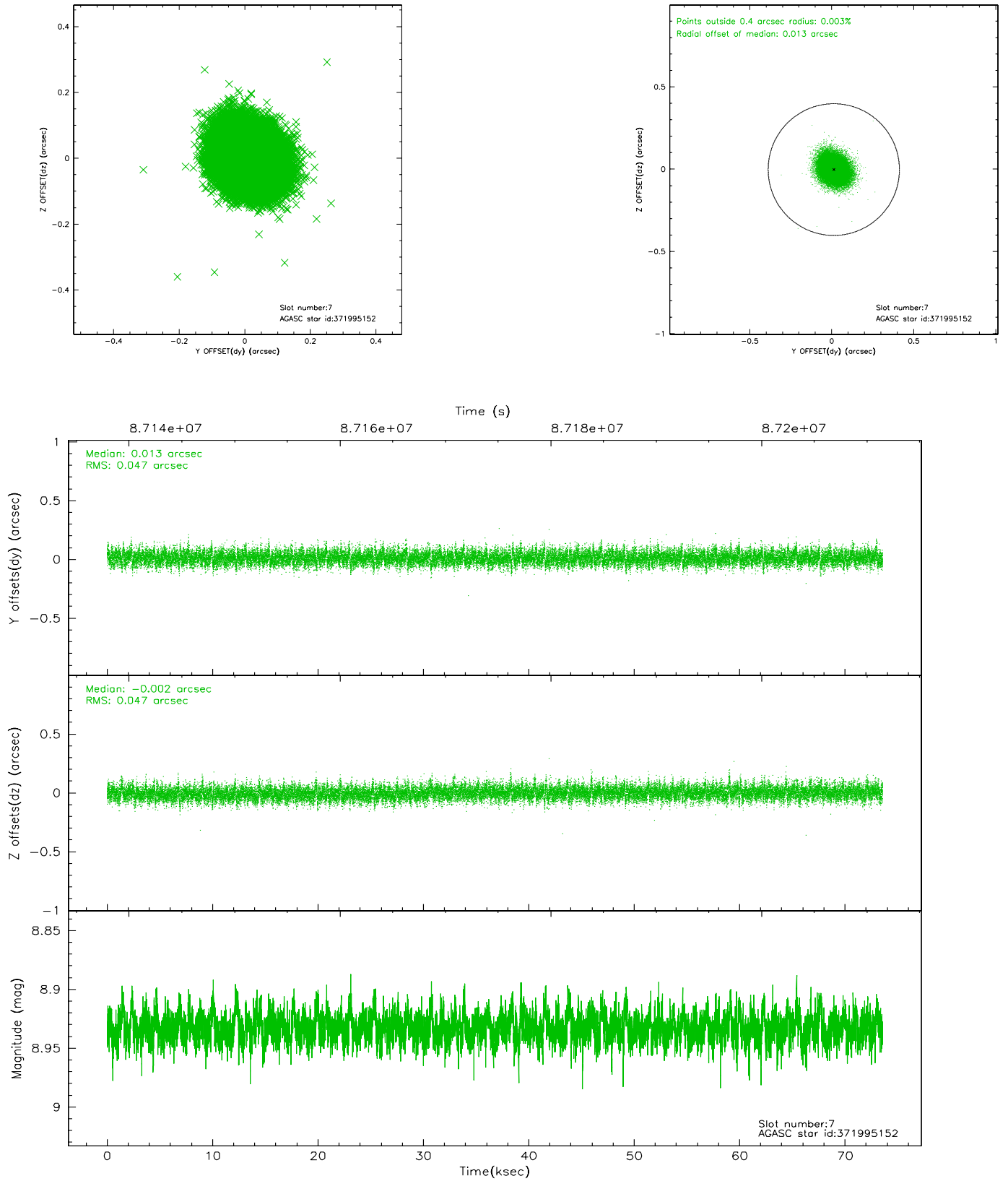
2.4.3 Slot 5



2.4.4 Slot 6

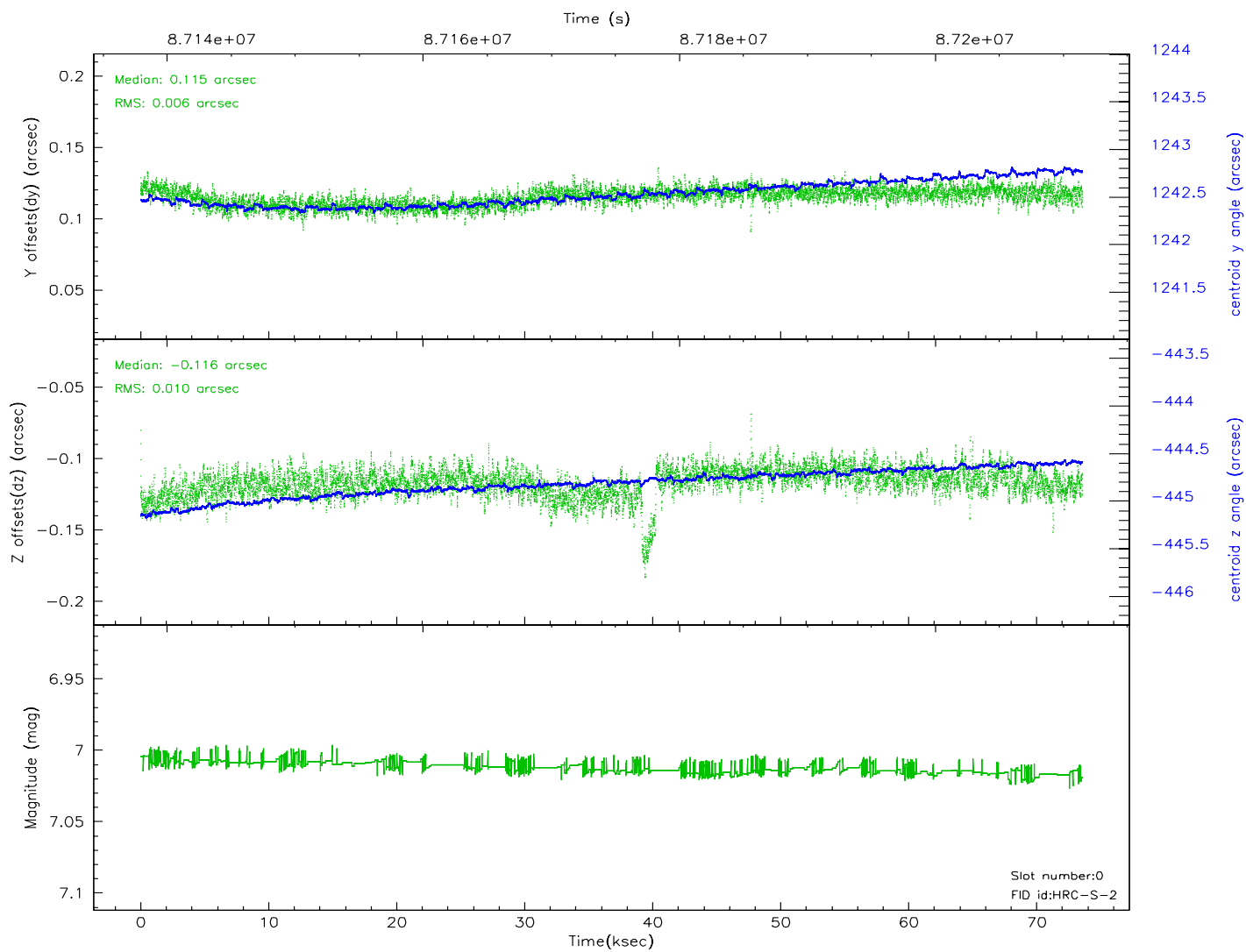
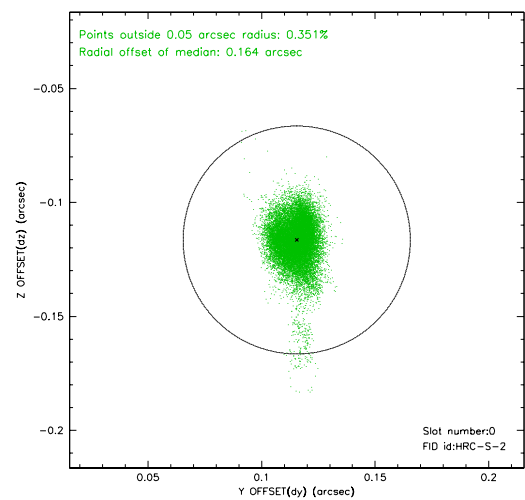
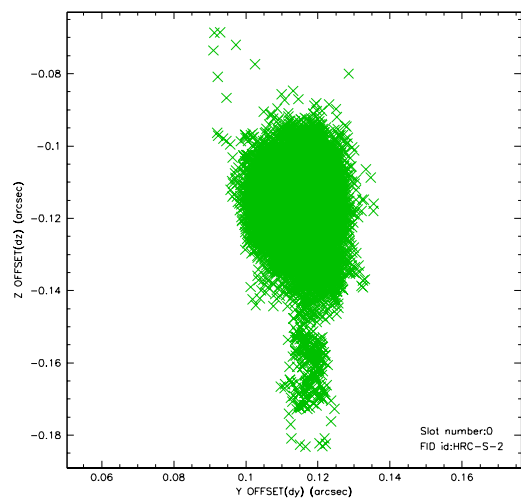


2.4.5 Slot 7

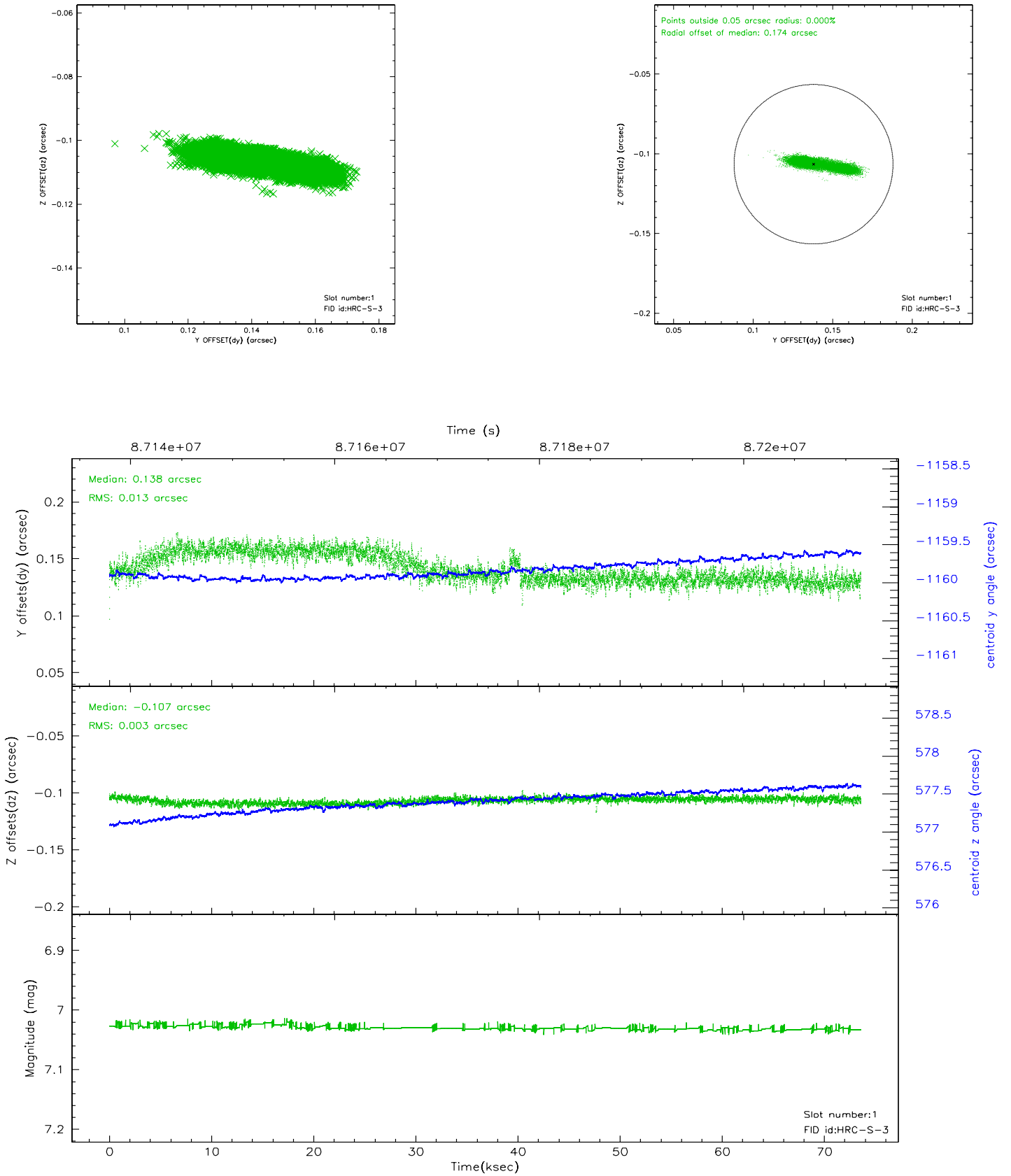


2.5 FID Slots

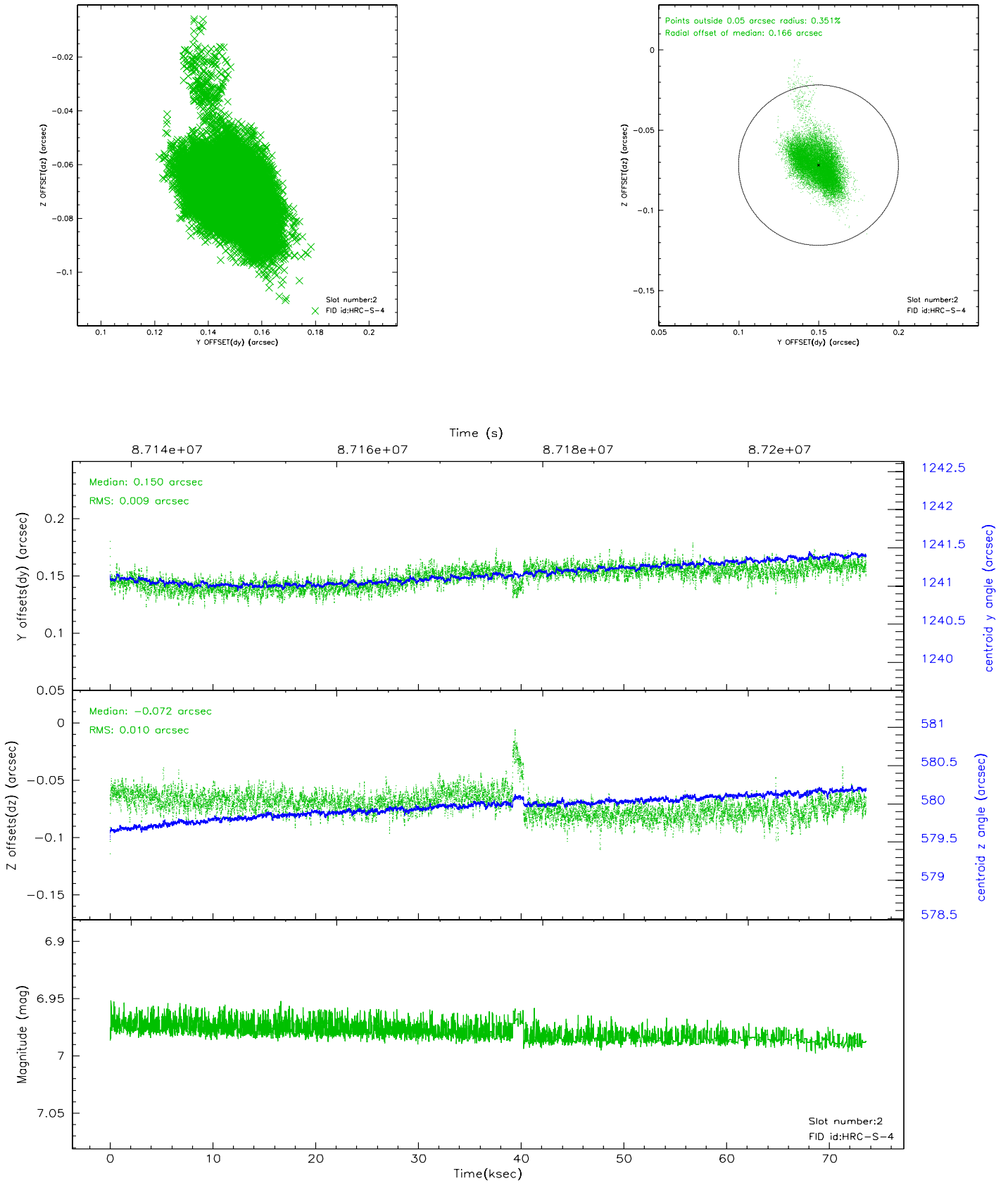
2.5.1 Slot 0



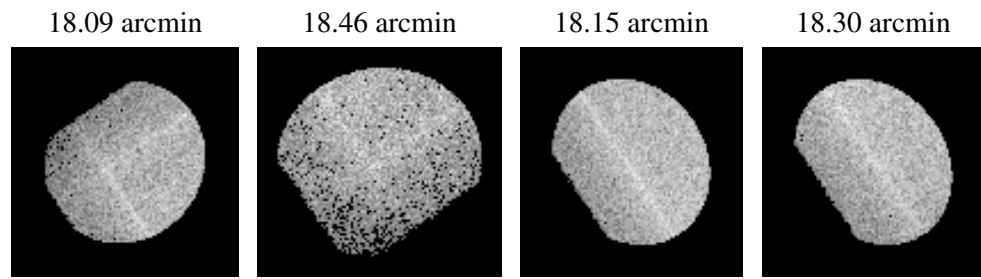
2.5.2 Slot 1



2.5.3 Slot 2



3 Point Sources



A Summary

A.1 Status

V&V Scientist	Beth Sundheim
V&V Date (YYYY-MM-DD)	2007.06.12
V&V Edition	1
V&V Disposition and Status	OK
V&V Charge Time	73.494

A.2 Comments