

V&V Reference Report

L2 ASCDS Version : 10.4.3.1

Observation 18433 - L2 Version 1
Chandra X-Ray Center

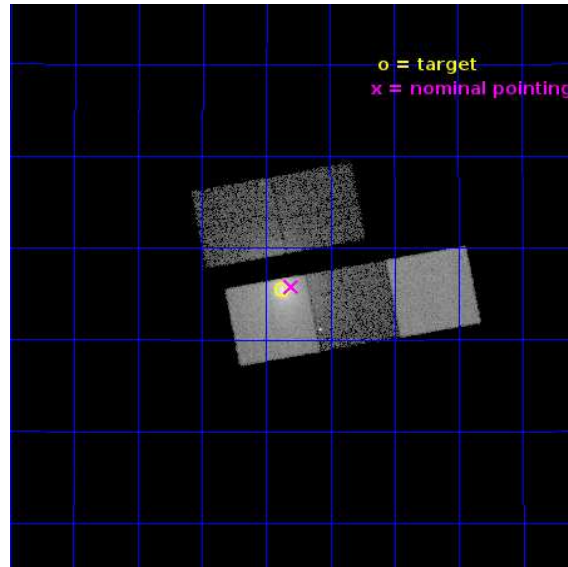
L2 Processing Date : Apr 12 2016

Contents

1	Front	2
2	OBI	3
2.1	OBI	3
2.1.1	Images	3
2.1.2	Bias	3
2.1.3	Parameters	4
2.1.4	Events	4
2.2	Compared Parameters	5
2.3	Aspect	6
2.4	Star Slots	9
2.4.1	Slot 3	9
2.4.2	Slot 4	10
2.4.3	Slot 5	11
2.4.4	Slot 6	12
2.4.5	Slot 7	13
2.5	FID Slots	14
2.5.1	Slot 0	14
2.5.2	Slot 1	15
2.5.3	Slot 2	16
A	Summary	17
A.1	Status	17
A.2	Comments	17

1 Front

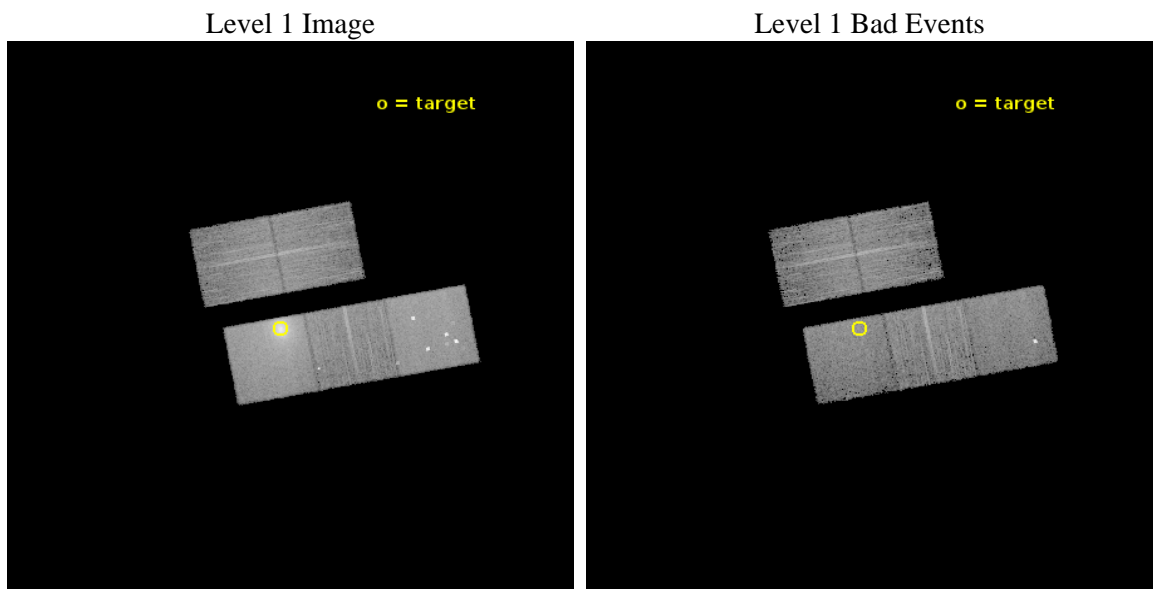
seq_num	890126	Sequence number
obs_id	18433	Observation id
title	AO-17 Calibration Observations of A1795	Proposal title
observer	Dr. CXC Calibration	Principal investigator
object	A1795	Source name
dtcycle	0	
cycle	P	events from which exps? Prim/Second/Both
ra_targ	207.219583	Observer's specified target RA [deg]
dec_targ	26.590833	Observer's specified target Dec [deg]
ra_nom	207.20091781967	Nominal RA [deg]
dec_nom	26.596452598959	Nominal Dec [deg]
roll_nom	169.37968497629	Nominal Roll [deg]
revision	1	Processing version of data
ontime	10056.400077462	Sum of GTIs [s]
livetime	9925.0058070361	Livetime [s]
ontime2	10053.259017467	Sum of GTIs [s]
ontime3	10056.400077462	Sum of GTIs [s]
ontime5	10056.400077462	Sum of GTIs [s]
ontime6	10056.400077462	Sum of GTIs [s]
ontime7	10056.400077462	Sum of GTIs [s]
l2events	159266	Number of level 2 events



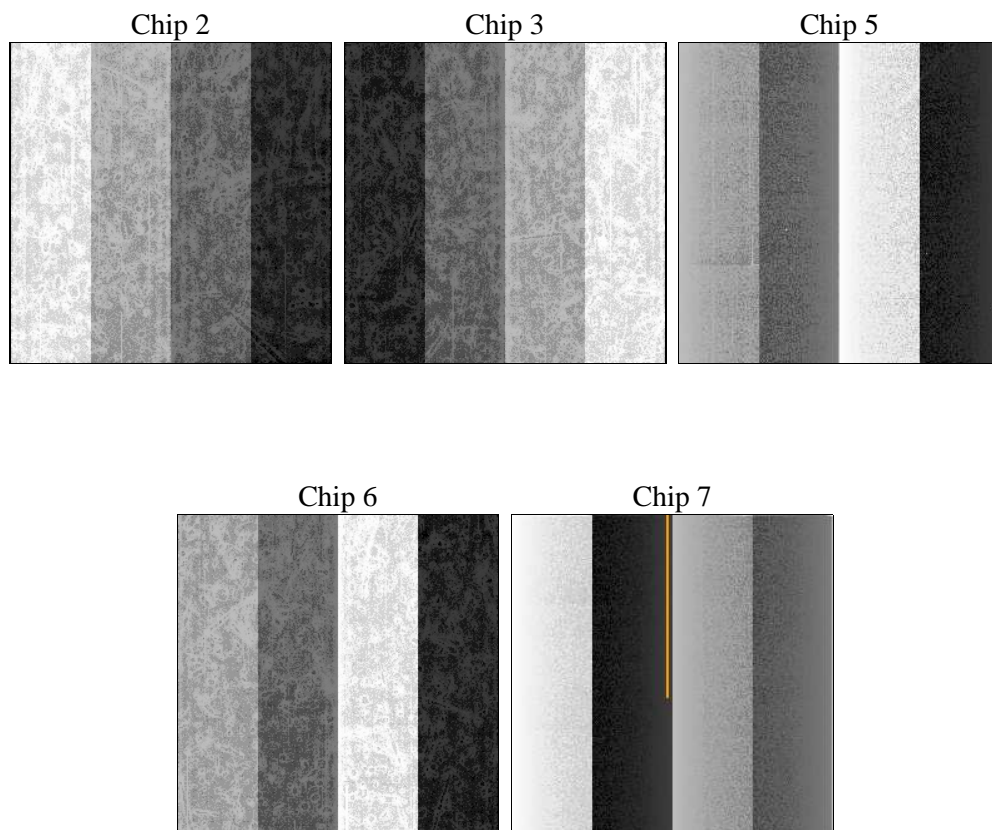
2 OBI

2.1 OBI

2.1.1 Images



2.1.2 Bias



2.1.3 Parameters

obi_num	0	Obi number	sched_exp_time	10000.000000	[s] Scheduled observation exposure time
ascdsver	10.4.3.1	Processing system revision	ontime	10056.400077462	Sum of GTIs [s]
caldsver	4.7.1	 	ontime2	10053.259017467	Sum of GTIs [s]
date	2016-04-12T20:34:05	Date and time of file creation	ontime3	10056.400077462	Sum of GTIs [s]
revision	1	Processing version of data	ontime5	10056.400077462	Sum of GTIs [s]
			ontime6	10056.400077462	Sum of GTIs [s]
			ontime7	10056.400077462	Sum of GTIs [s]
			l1events	442346	Number of level 1 events

2.1.4 Events

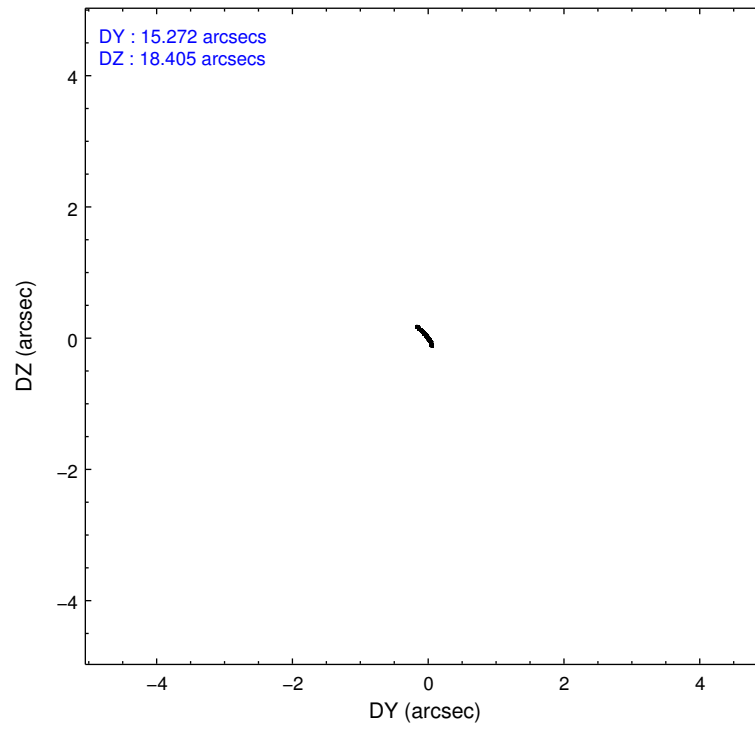
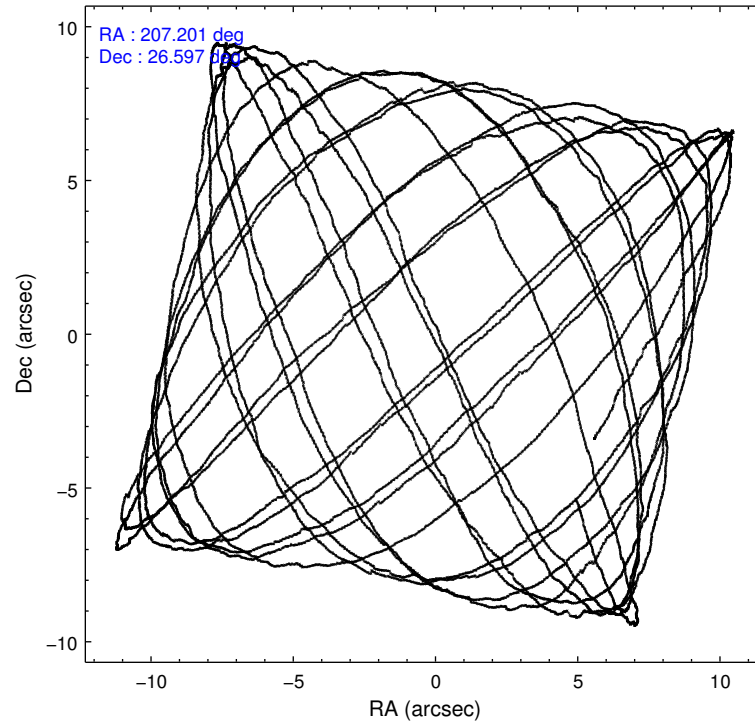
	ccd 2	ccd 3	ccd 5	ccd 6	ccd 7
level 1 events	62709	62200	111381	68706	137350
rejected events	54282	52718	54479	56868	47973
rejected %	86%	84%	48%	82%	34%

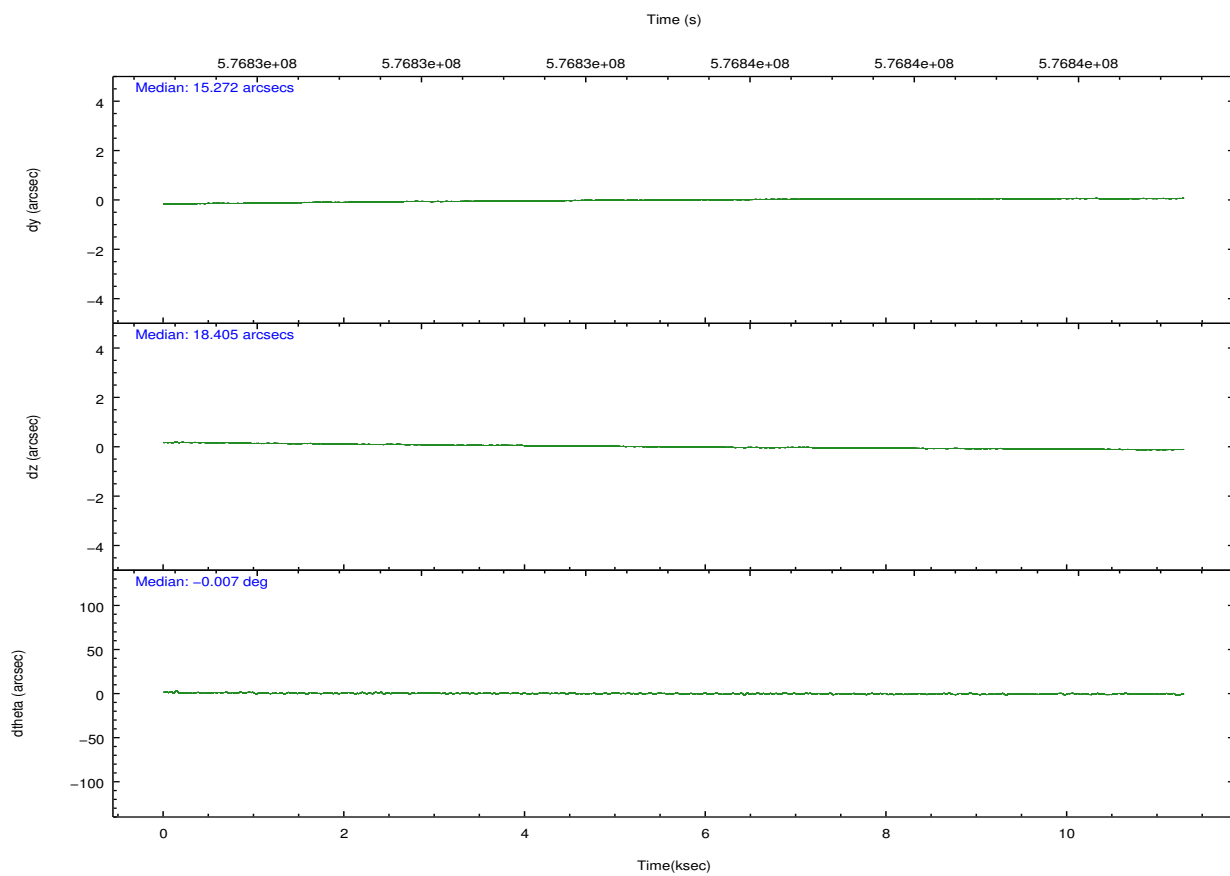
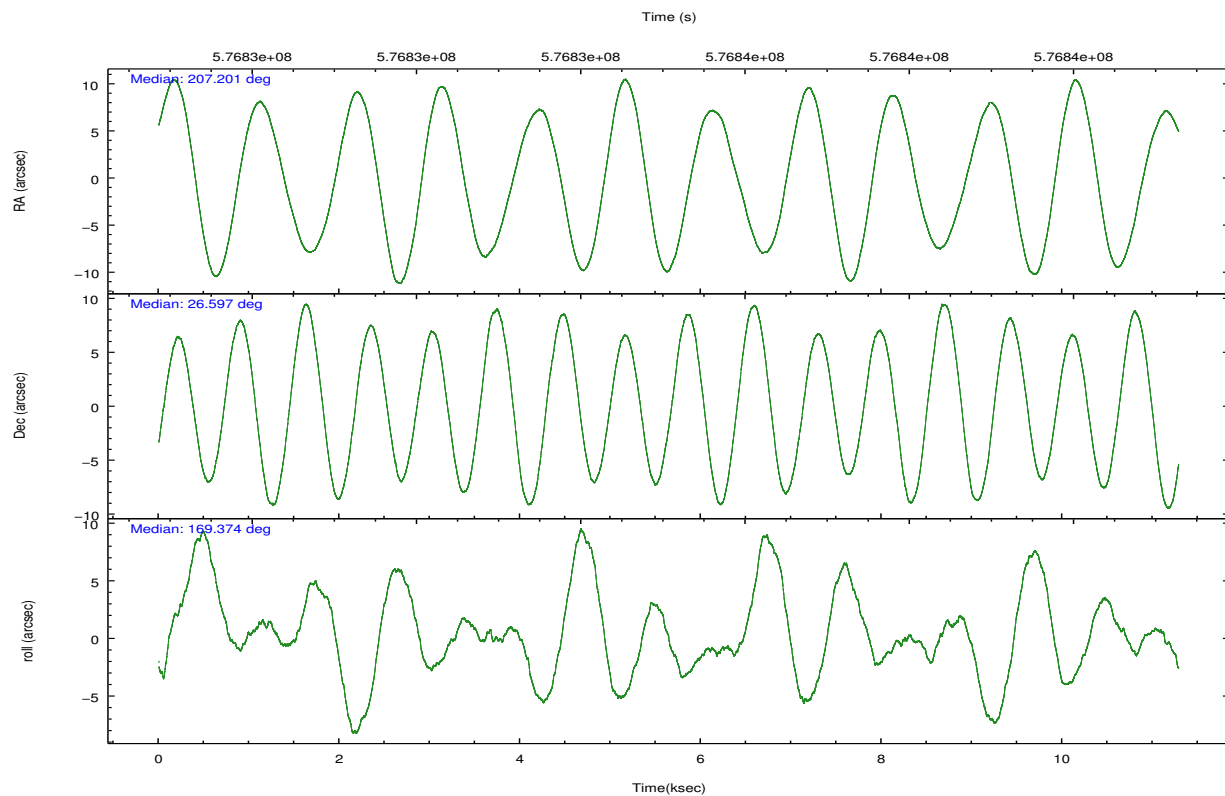
	ccd 2	ccd 3	ccd 5	ccd 6	ccd 7
grade 0 events	3790	4642	12577	6050	17200
	6%	7%	11%	8%	12%
grade 1 events	44	47	225	46	113
	0%	0%	0%	0%	0%
grade 2 events	1796	1714	15135	2216	21982
	2%	2%	13%	3%	16%
grade 3 events	746	867	1467	832	8663
	1%	1%	1%	1%	6%
grade 4 events	743	827	1320	859	8603
	1%	1%	1%	1%	6%
grade 5 events	2482	3024	7113	2996	8344
	3%	4%	6%	4%	6%
grade 6 events	1357	1437	26417	1886	32946
	2%	2%	23%	2%	23%
grade 7 events	51751	49642	47127	53821	39499
	82%	79%	42%	78%	28%

2.2 Compared Parameters

Parameter	Planned	Actual	Parameter	Planned	Actual
Instrument	ACIS	ACIS	Obspar format version number	7	7
Detector	ACIS-23567	ACIS-23567	Obspar file type	PREDICTED	ACTUAL
Grating	NONE	NONE	Obspar update status	NONE	UPDATED
Data mode	VFAINT	VFAINT	Number of optional ACIS chips dropped	0	0
Observation mode	POINTING	POINTING	On-chip summing requested	N	N
[deg] Pointing RA	207.229689	207.2009178196737	Subarray requested	NONE	NONE
[deg] Pointing Dec	26.605916	26.59645259895879	Alternating exposures requested	N	N
[deg] Pointing Roll	169.210176	169.3796849762908	[s] Primary exposure time	0.000000	3.1
[s] Window start time (MET)	575856068.184000	575856068.184000			
[s] Window stop time (MET)	578361668.184000	578361668.184000			
[mm] SIM focus pos	-0.684267	-0.6828225247311905			
[mm] SIM defocus	0	0.001444936568705701			
[mm] SIM translation stage pos	-199.932523	-199.9408670953528			
[mm] SIM translation stage offset	9.8000000000000001	9.808344512344945			
[s] Observation start time (MET)	576830735.184000	576829243.47849			
Observation start date	2016-04-12T06:44:27	2016-04-12T06:20:43			
[s] Observation end time (MET)	576840735.184000	576840869.5416501			
Observation end date	2016-04-12T09:31:07	2016-04-12T09:34:29			
Read mode	TIMED	TIMED			

2.3 Aspect



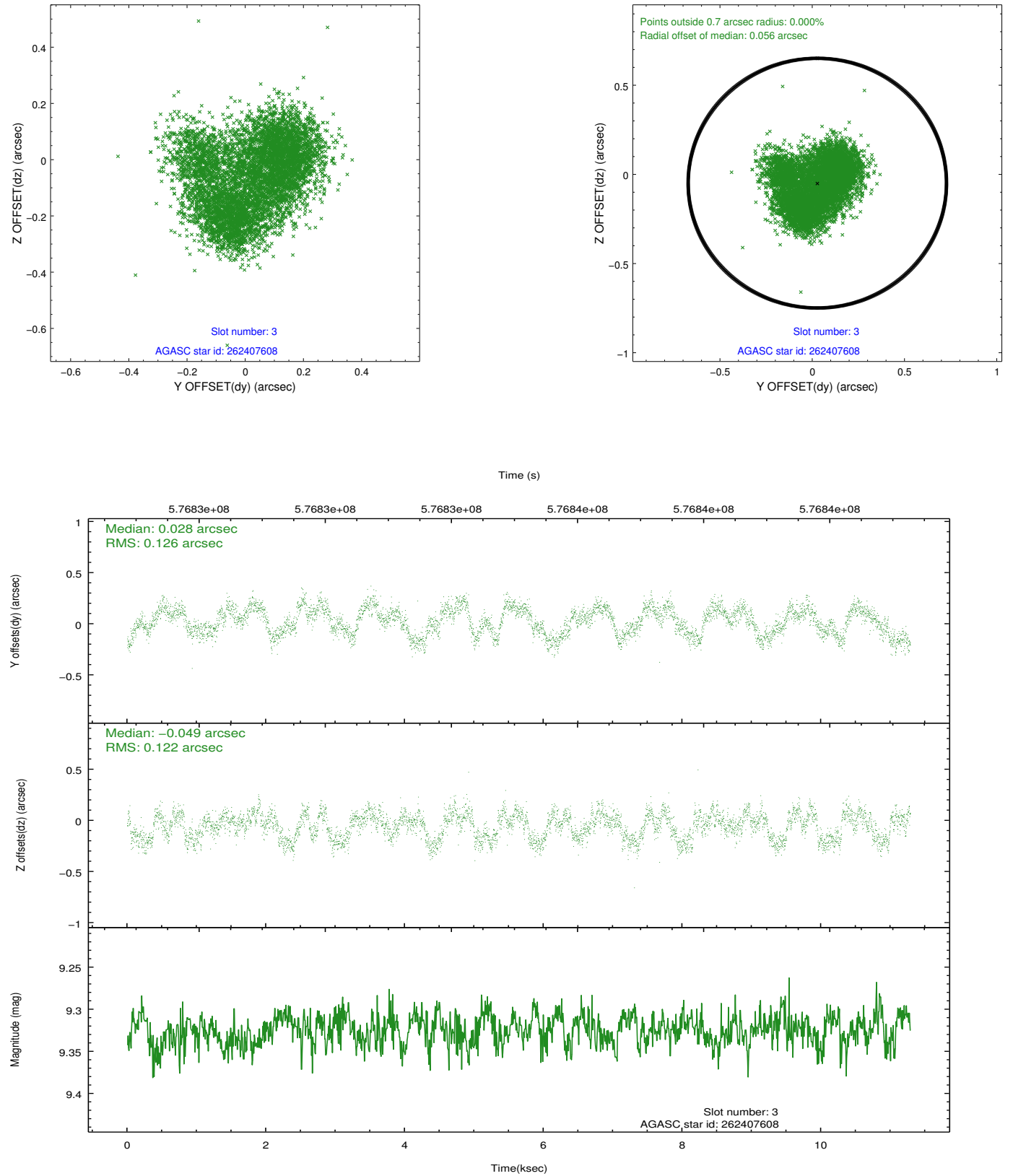


Slot Statistics

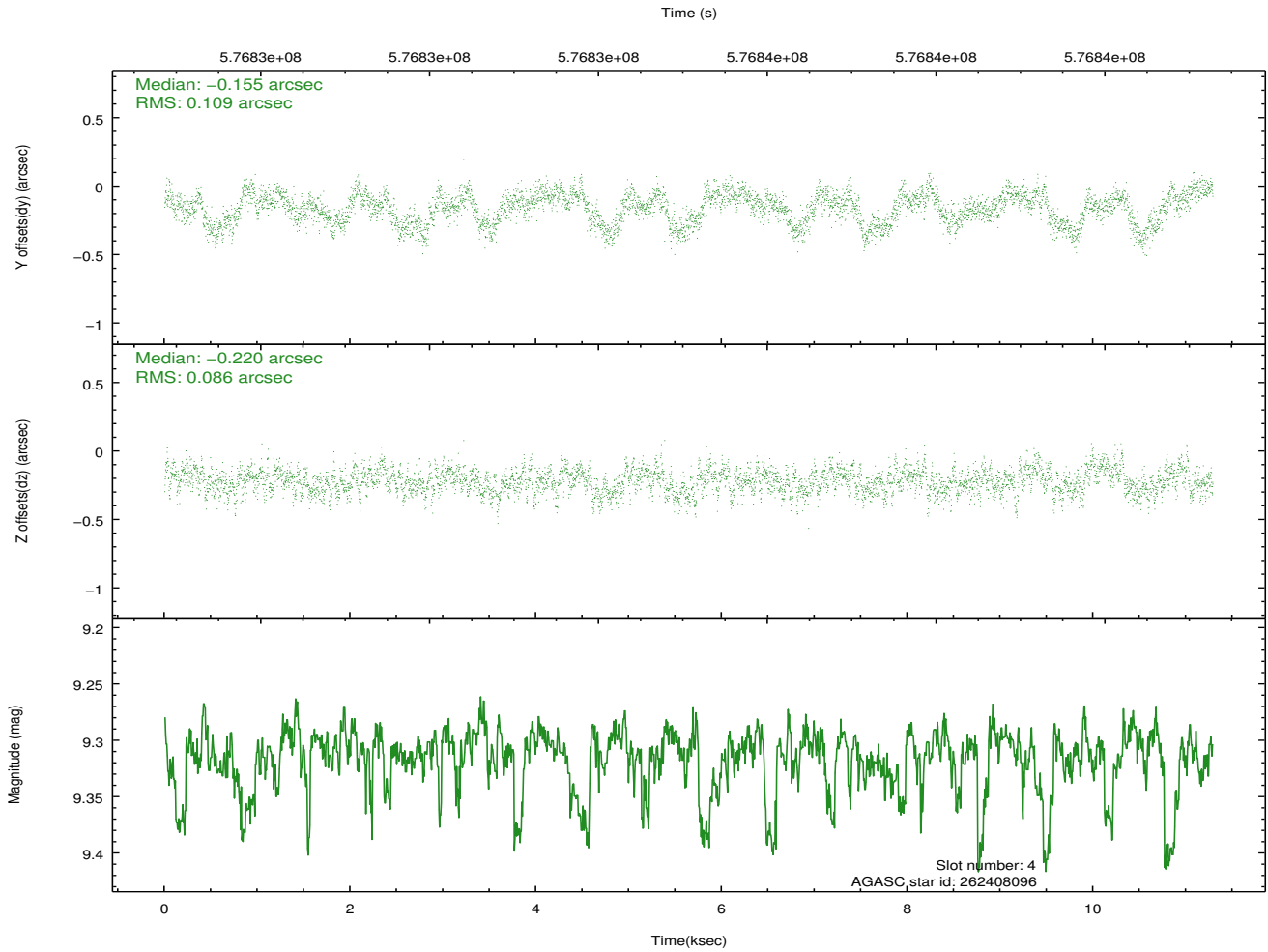
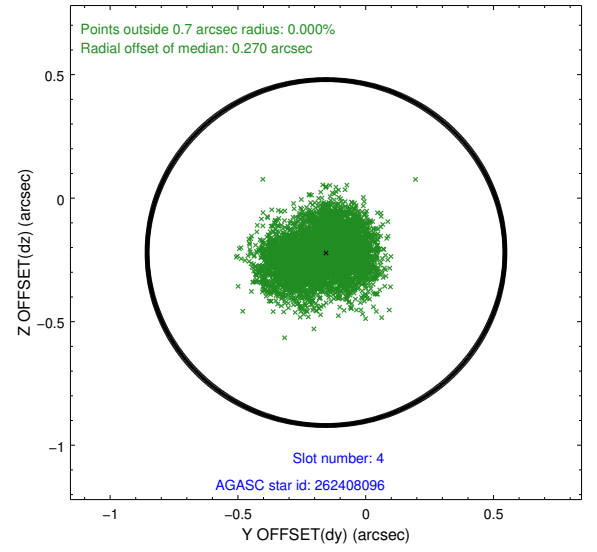
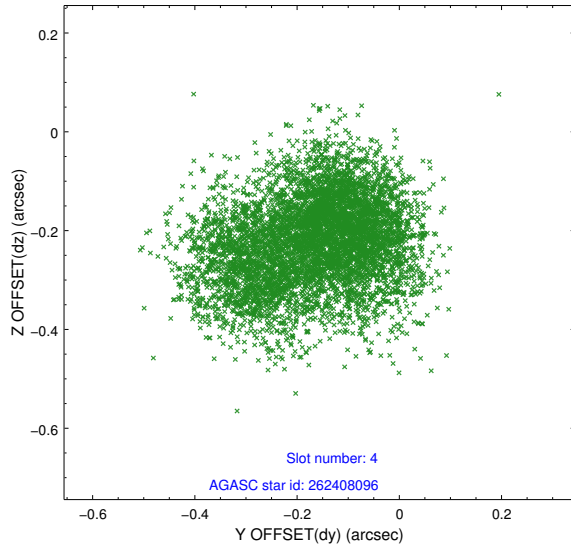
slot	status	used	id	mag	n_pts	med_dy	med_dz	dr1	dr2	ra	dec	mean_y	mean_z
0	FID		ACIS-S-1	7.22	2753	0.071	-0.197	0.007	0.012	0.000000	0.000000	927.32	-1533.52
1	FID		ACIS-S-5	7.25	2754	-0.198	-0.010	0.006	0.011	0.000000	0.000000	-1821.73	363.79
2	FID		ACIS-S-6	7.30	2753	0.106	0.219	0.007	0.012	0.000000	0.000000	392.37	1008.53
3	GUIDE	used	262407608	9.32	5506	0.028	-0.049	0.194	0.274	207.378401	26.435507	-585.41	512.88
4	GUIDE	used	262408096	9.31	5500	-0.155	-0.220	0.151	0.238	207.011678	26.515421	629.83	451.06
5	GUIDE	used	262408512	7.96	5506	0.090	0.212	0.097	0.183	207.800210	27.128796	-1441.52	-2194.86
6	GUIDE	used	262408936	9.62	5500	-0.038	0.080	0.158	0.278	207.154731	26.726554	318.04	-381.39
7	GUIDE	used	262409552	8.18	5505	0.083	-0.006	0.125	0.205	206.584269	27.192805	2427.73	-1692.98

2.4 Star Slots

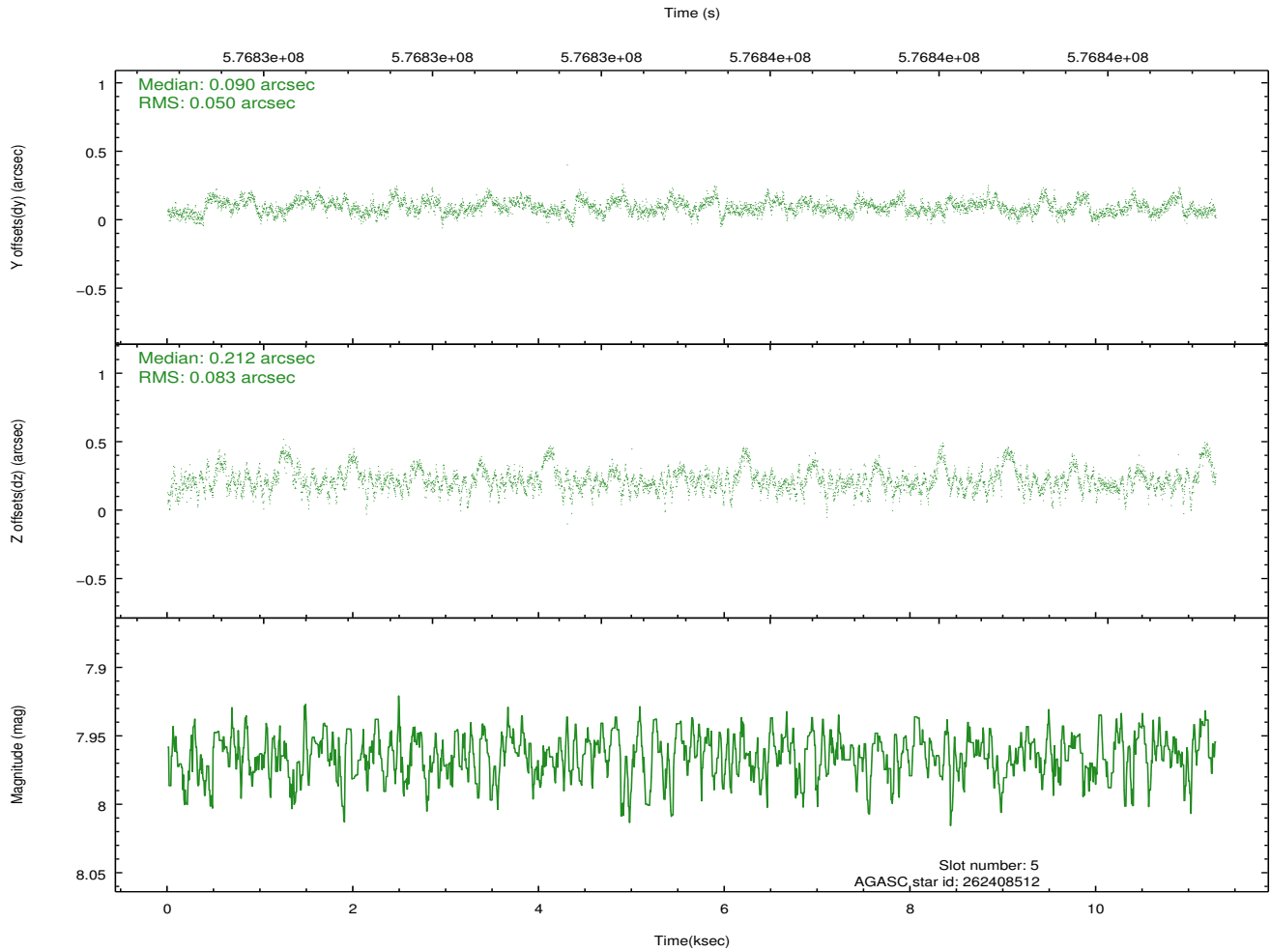
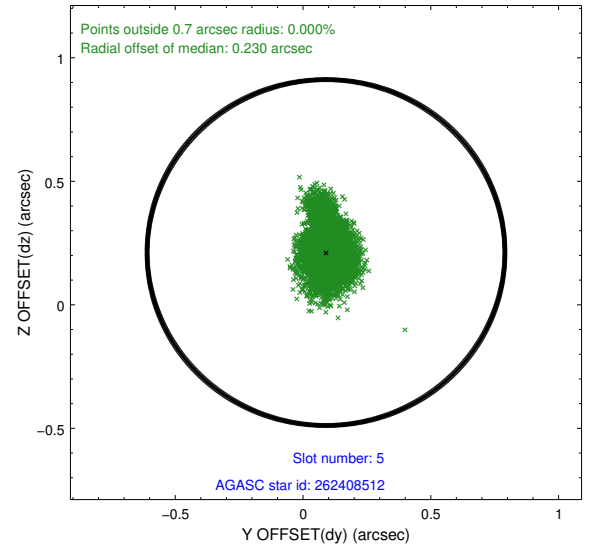
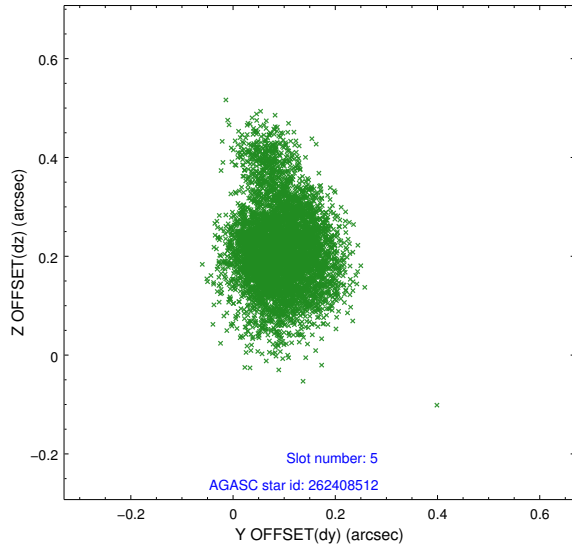
2.4.1 Slot 3



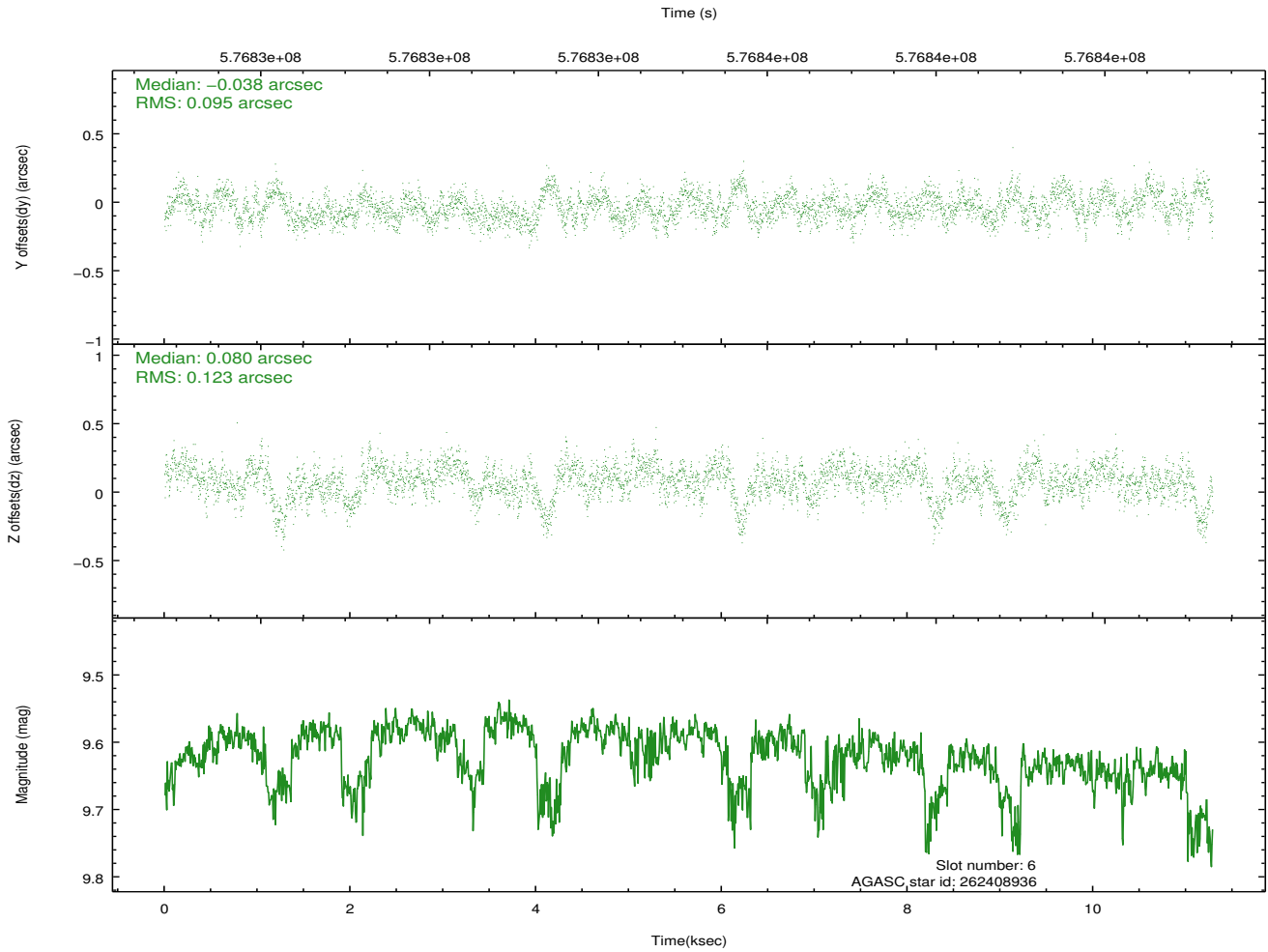
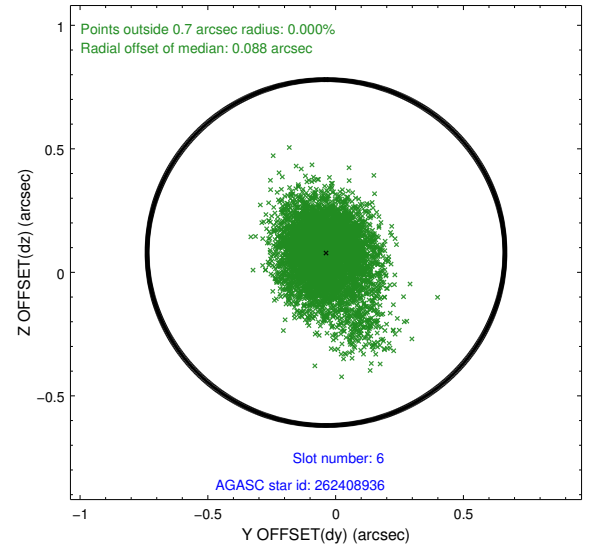
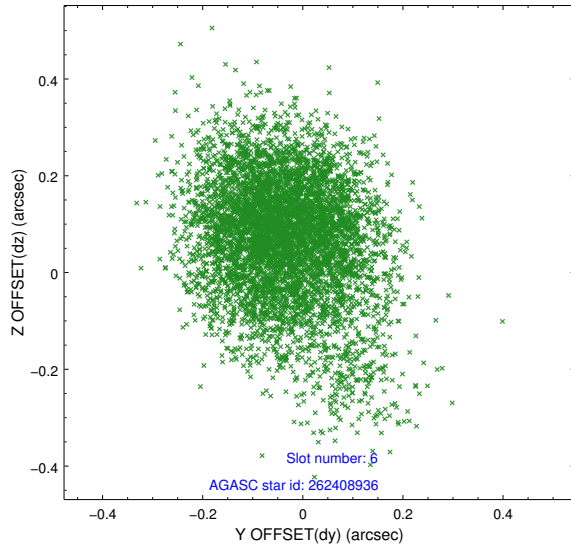
2.4.2 Slot 4



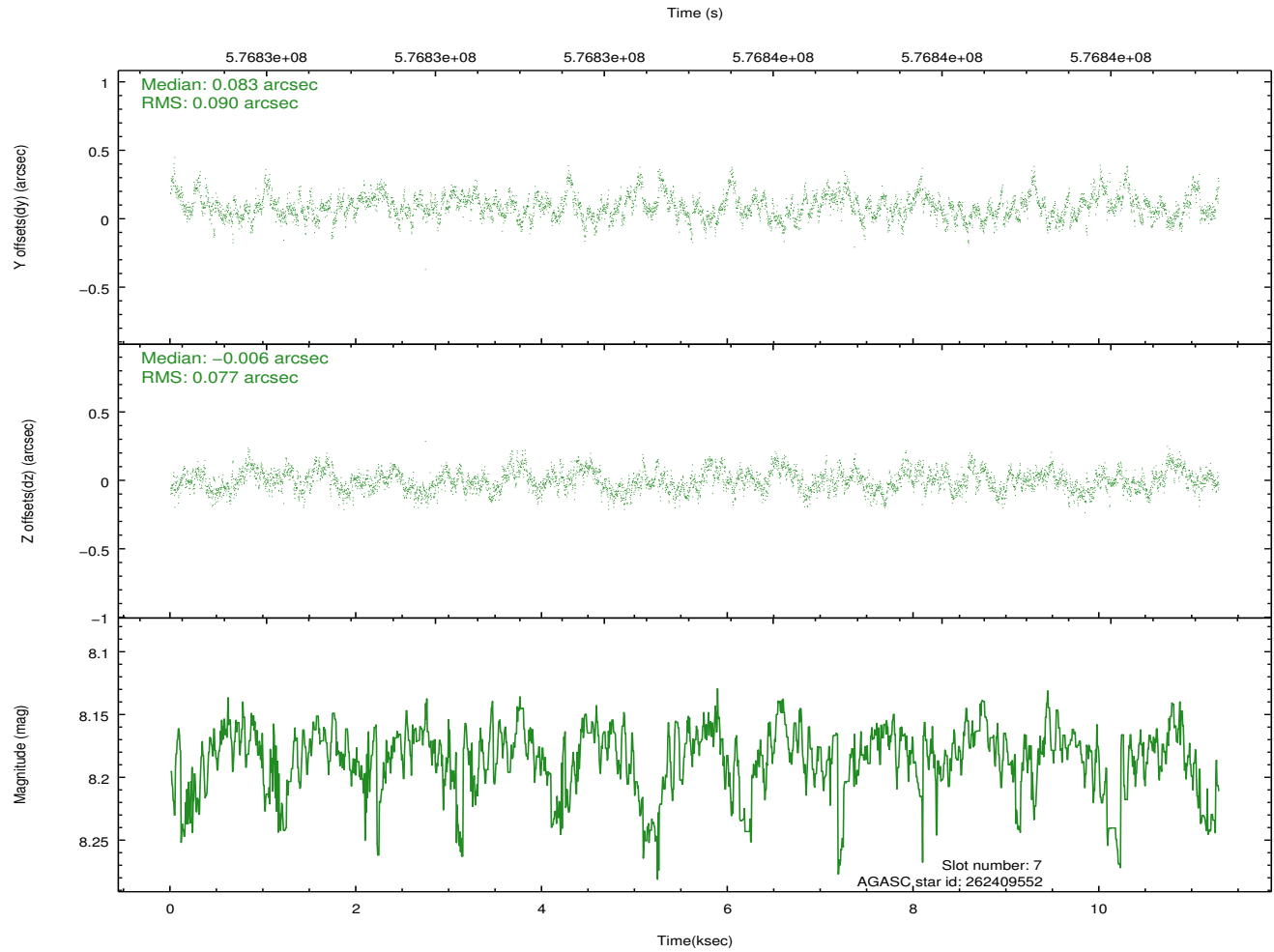
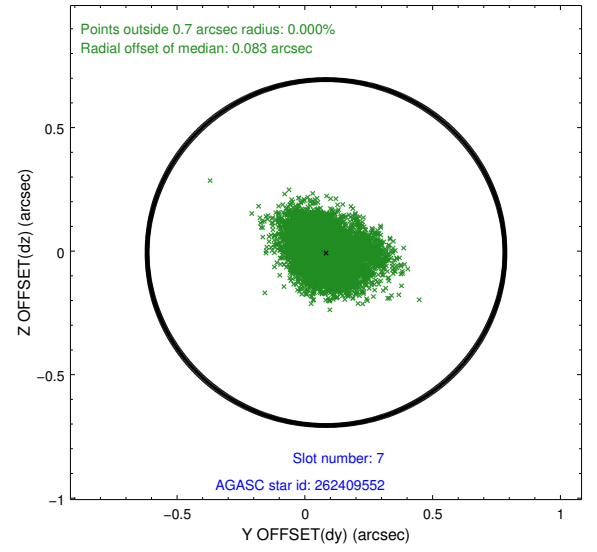
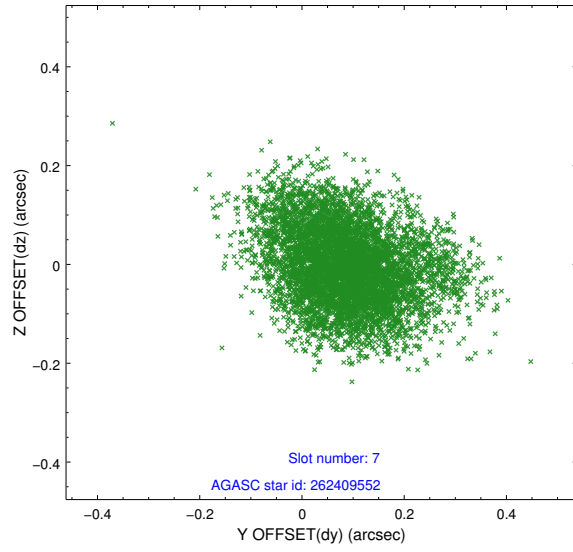
2.4.3 Slot 5



2.4.4 Slot 6

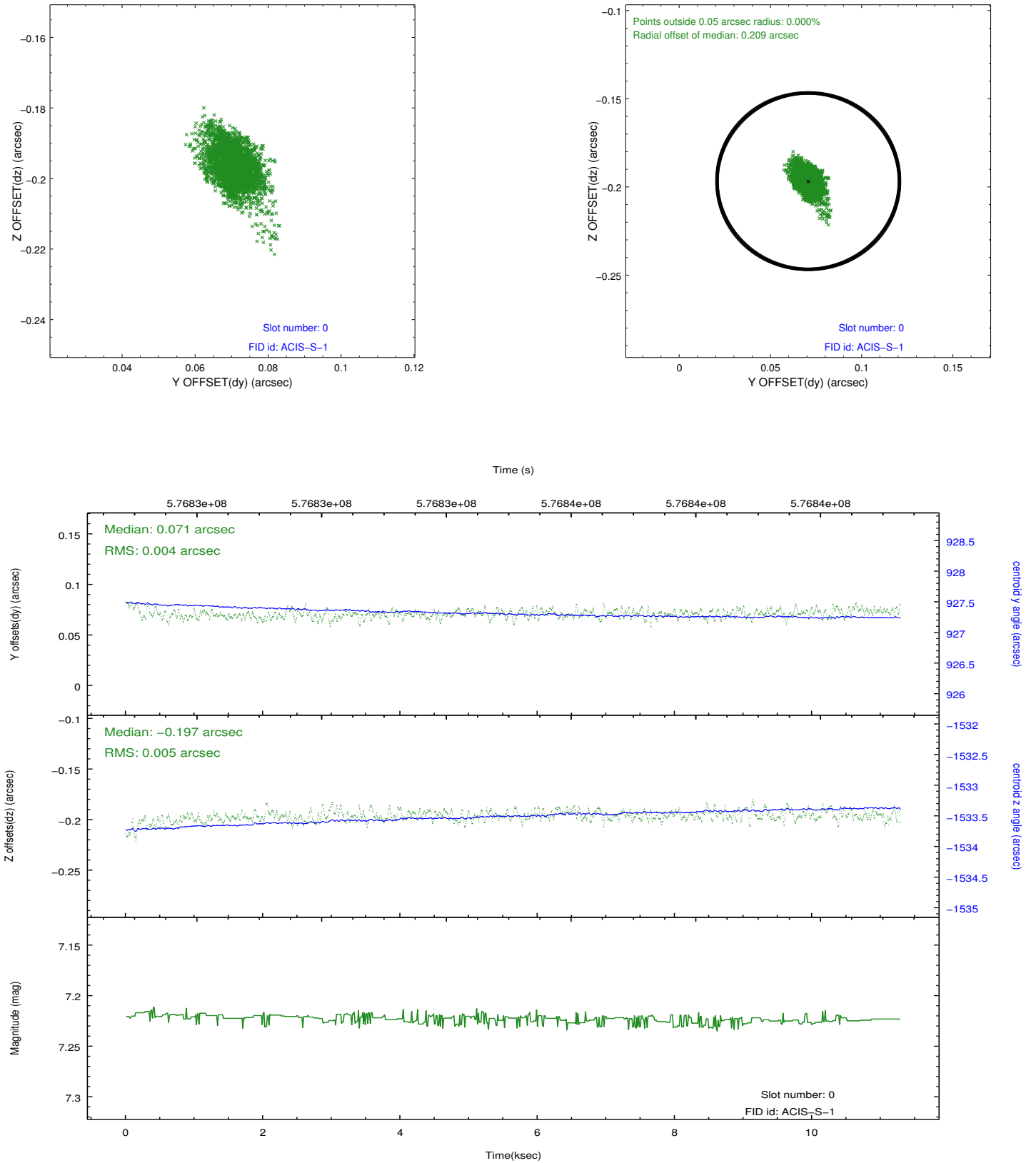


2.4.5 Slot 7

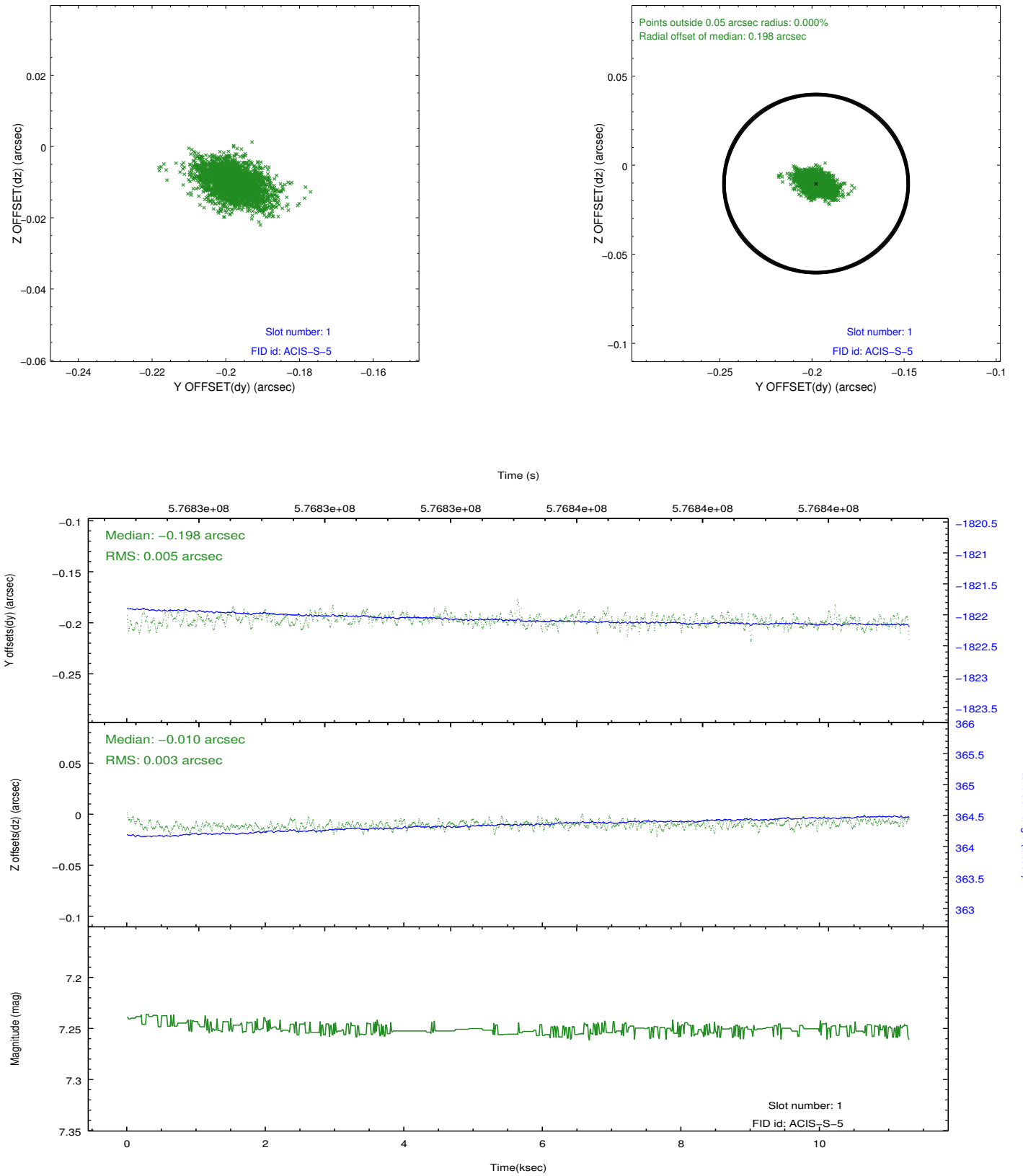


2.5 FID Slots

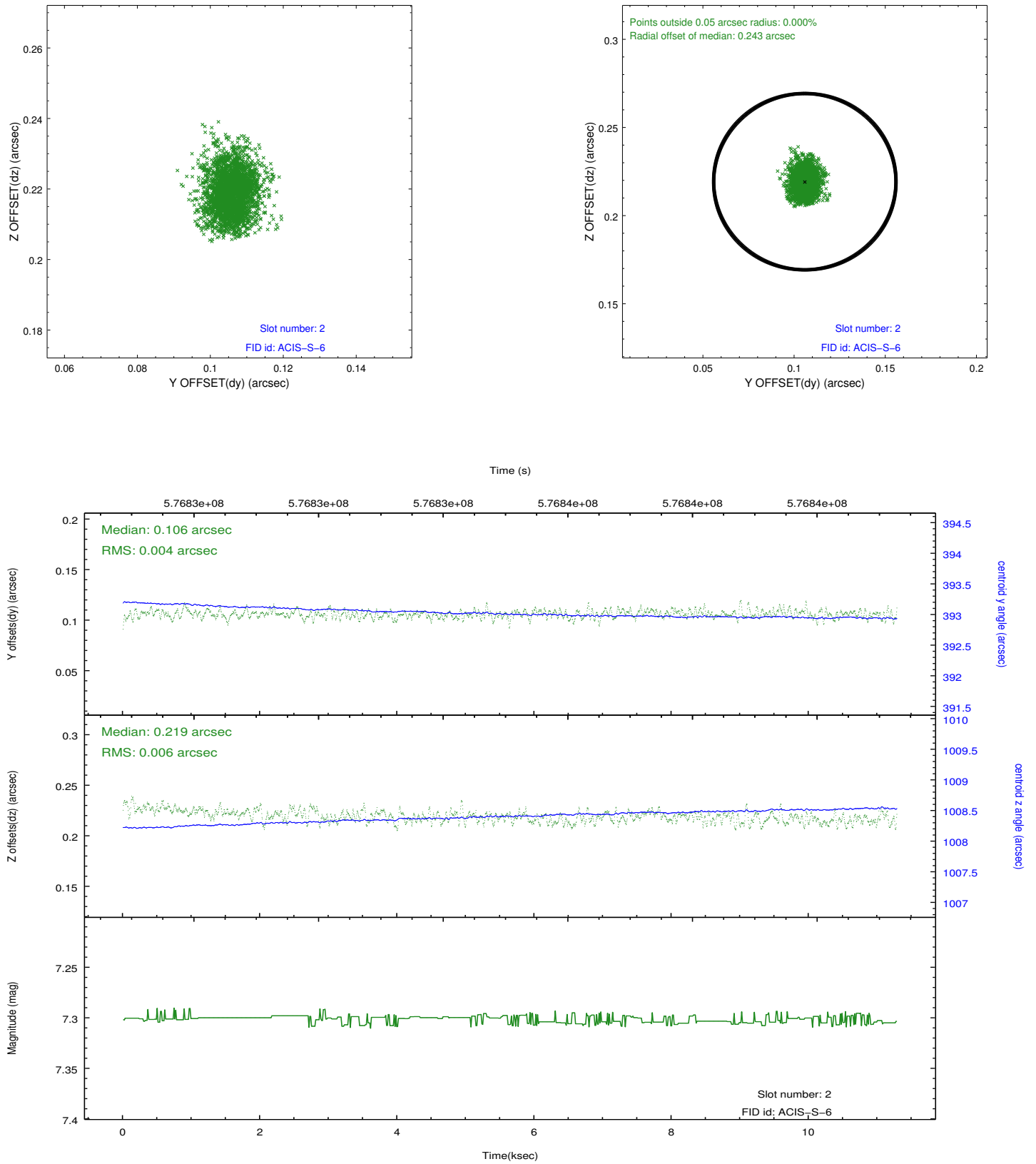
2.5.1 Slot 0



2.5.2 Slot 1



2.5.3 Slot 2



A Summary

A.1 Status

V&V Scientist	Joy Nichols
V&V Date (YYYY-MM-DD)	2016.04.13
V&V Edition	1
V&V Disposition and Status	OK
V&V Charge Time	10.056400077462

A.2 Comments