

V&V Reference Report

L2 ASCDS Version : 7.6.10

Observation 1773 - L2 Version 4
Chandra X-Ray Center

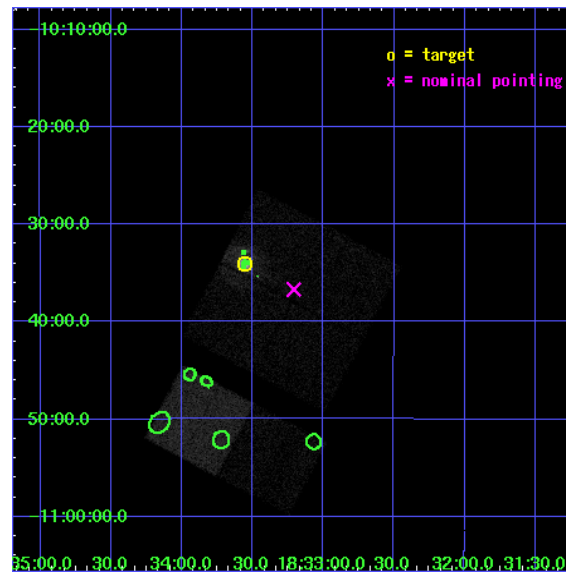
L2 Processing Date : Nov 18 2008

Contents

1	Front	2
2	OBI	3
2.1	OBI	3
2.1.1	Images	3
2.1.2	Bias	3
2.1.3	Parameters	4
2.1.4	Events	4
2.2	Compared Parameters	5
2.3	Aspect	6
2.4	Star Slots	9
2.4.1	Slot 3	9
2.4.2	Slot 4	10
2.4.3	Slot 5	11
2.4.4	Slot 6	12
2.4.5	Slot 7	13
2.5	FID Slots	14
2.5.1	Slot 0	14
2.5.2	Slot 1	15
2.5.3	Slot 2	16
3	Point Sources	17
A	Summary	18
A.1	Status	18
A.2	Comments	18

1 Front

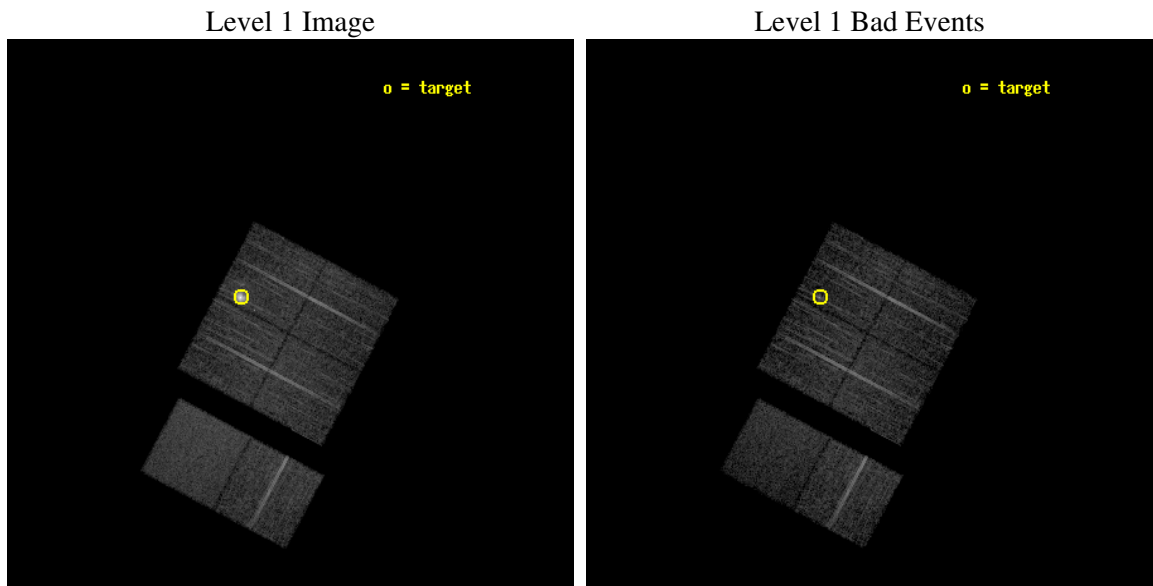
seq_num	590199
obs_id	1773
title	HRC RESPONSE TO CONTINUUM SOURCE.
observer	Dr. CXC Calibration
object	G21.5-0.9 [Chip I1, T=110, Offsets=-5,0,-1]
dtcycle	0
cycle	P
ra_targ	278.389583
dec_targ	-10.568528
ra_nom	278.30196698826
dec_nom	-10.611546311939
roll_nom	207.87174266115
revision	4
ontime	7315.2000068128
livetime	7222.5705396419
ontime0	7315.2000068128
ontime1	7315.2000068128
ontime2	7315.2000068128
ontime3	7315.2000068128
ontime6	7315.2000068128
ontime7	7315.2000068128
l2events	66726



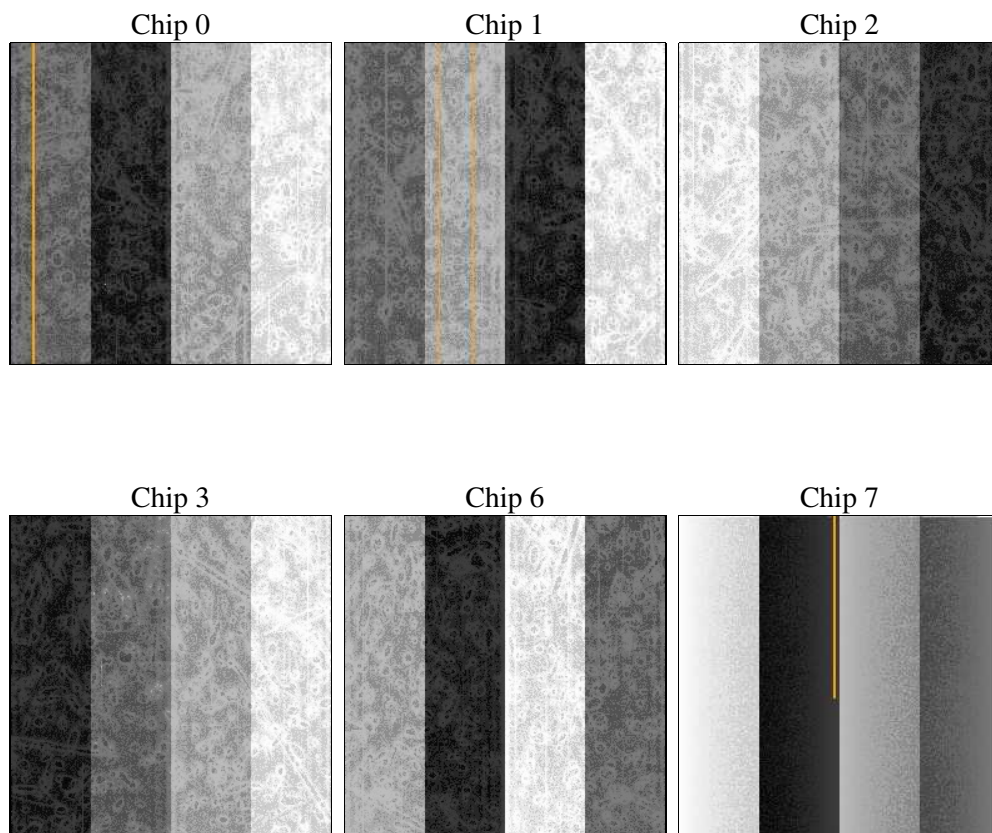
2 OBI

2.1 OBI

2.1.1 Images



2.1.2 Bias



2.1.3 Parameters

obi_num	0
ascdsver	7.6.11.9
caldbver	3.5.0
date	2008-11-18T18:00:27
revision	4

sched_exp_time	7560.000000
ontime	7315.2000068128
ontime0	7315.2000068128
ontime1	7315.2000068128
ontime2	7315.2000068128
ontime3	7315.2000068128
ontime6	7315.2000068128
ontime7	7315.2000068128
l1events	328307

2.1.4 Events

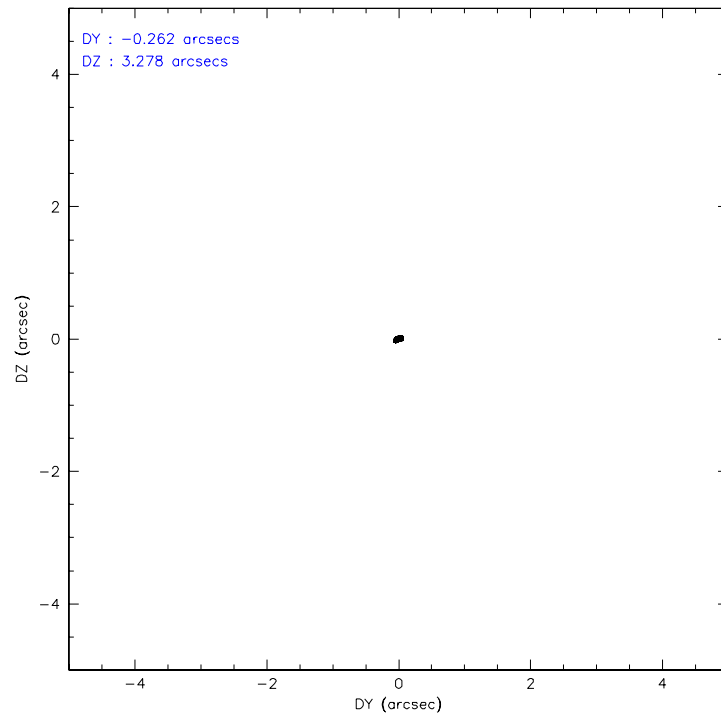
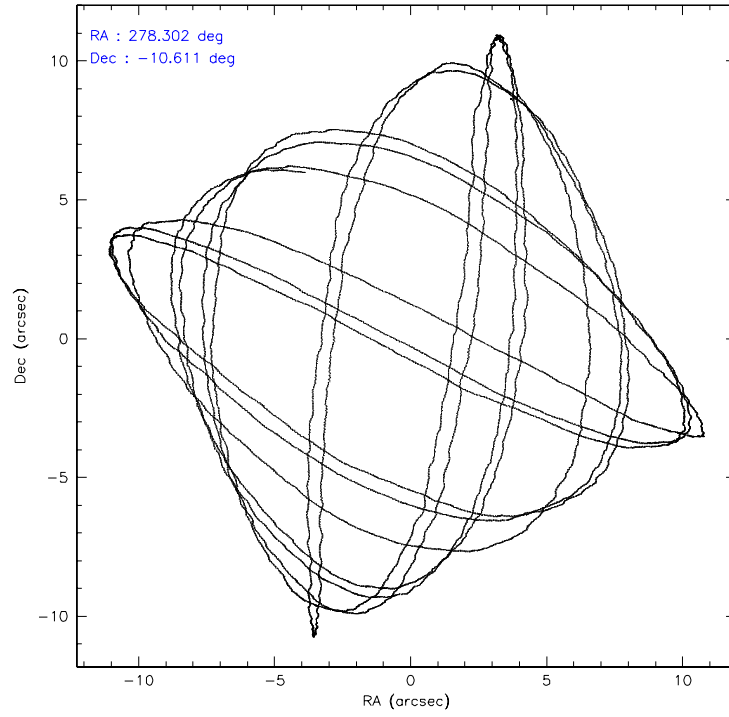
	ccd 0	ccd 1	ccd 2	ccd 3	ccd 6	ccd 7
level 1 events	45535	68908	51643	52767	52949	56505
rejected events	40052	42405	46580	46519	47681	35380
rejected %	87%	61%	90%	88%	90%	62%

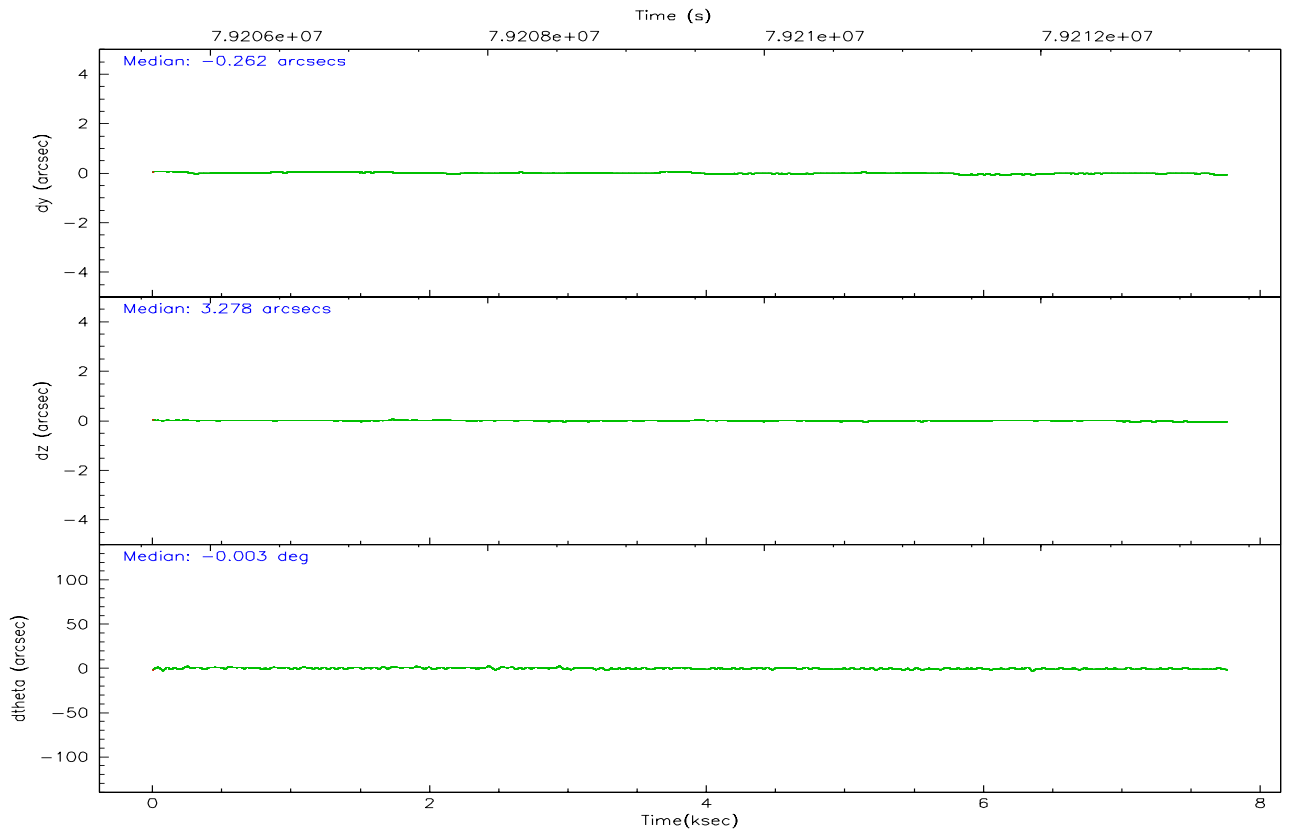
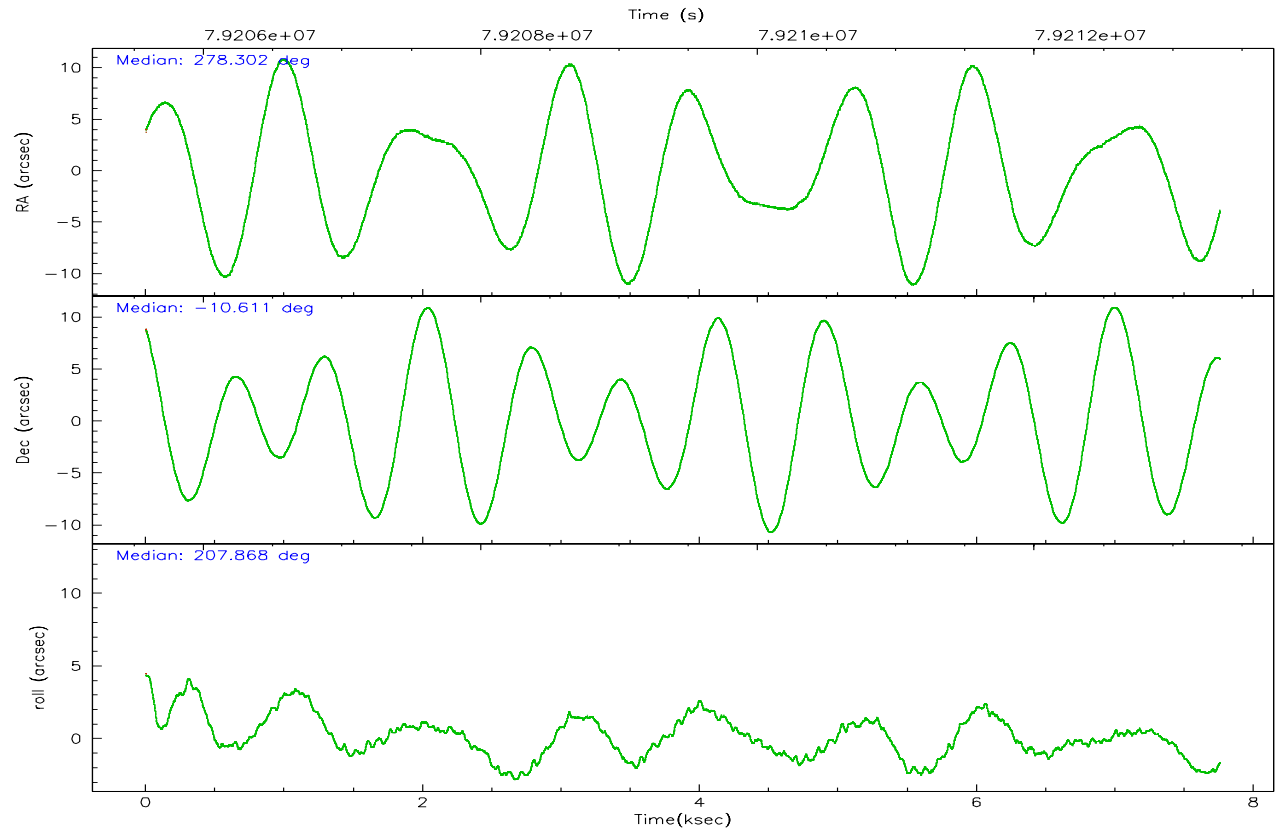
	ccd 0	ccd 1	ccd 2	ccd 3	ccd 6	ccd 7
grade 0 events	1463	15887	1136	1904	1028	1153
	3%	23%	2%	3%	1%	2%
grade 1 events	14	110	15	17	6	34
	0%	0%	0%	0%	0%	0%
grade 2 events	2059	5335	2048	2314	2106	4509
	4%	7%	3%	4%	3%	7%
grade 3 events	384	1280	325	360	339	1256
	0%	1%	0%	0%	0%	2%
grade 4 events	338	1319	334	325	303	1087
	0%	1%	0%	0%	0%	1%
grade 5 events	1010	1246	919	1118	1243	3497
	2%	1%	1%	2%	2%	6%
grade 6 events	1242	2693	1222	1351	1492	13132
	2%	3%	2%	2%	2%	23%
grade 7 events	39025	41038	45644	45378	46432	31837
	85%	59%	88%	85%	87%	56%

2.2 Compared Parameters

Parameter	Planned	Actual	Parameter	Planned	Actual
Instrument	ACIS	ACIS	Obspar format version number	6	6
Detector	ACIS-012367	ACIS-012367	Obspar file type	PREDICTED	ACTUAL
Grating	NONE	NONE	Obspar update status	NONE	UPDATED
Data mode	FAINT	FAINT	Number of optional ACIS chips dropped	0	0
Observation mode	POINTING	POINTING	On-chip summing requested	N	N
Pointing RA	278.317008	278.3019669882644	Subarray requested	NONE	NONE
Pointing Dec	-10.588244	-10.61154631193923	Alternating exposures requested	N	N
Pointing Roll	207.665819	207.8717426611496	Primary exposure time	0.000000	3.2
SIM focus pos (mm)	-0.782348	-0.7809083437167272			
SIM defocus (mm)	0	0.001439871863259334			
SIM translation stage pos (mm)	-238.277263	-238.2741181829365			
SIM translation stage offset (mm)	4.6848	4.681665180006831			
Observation start time	79205786.184000	79205409.892314			
Observation start date	2000-07-05T17:35:22	2000-07-05T17:30:09			
Observation end time	79213346.184000	79213479.717611			
Observation end date	2000-07-05T19:41:22	2000-07-05T19:44:39			
Read mode	TIMED	TIMED			

2.3 Aspect



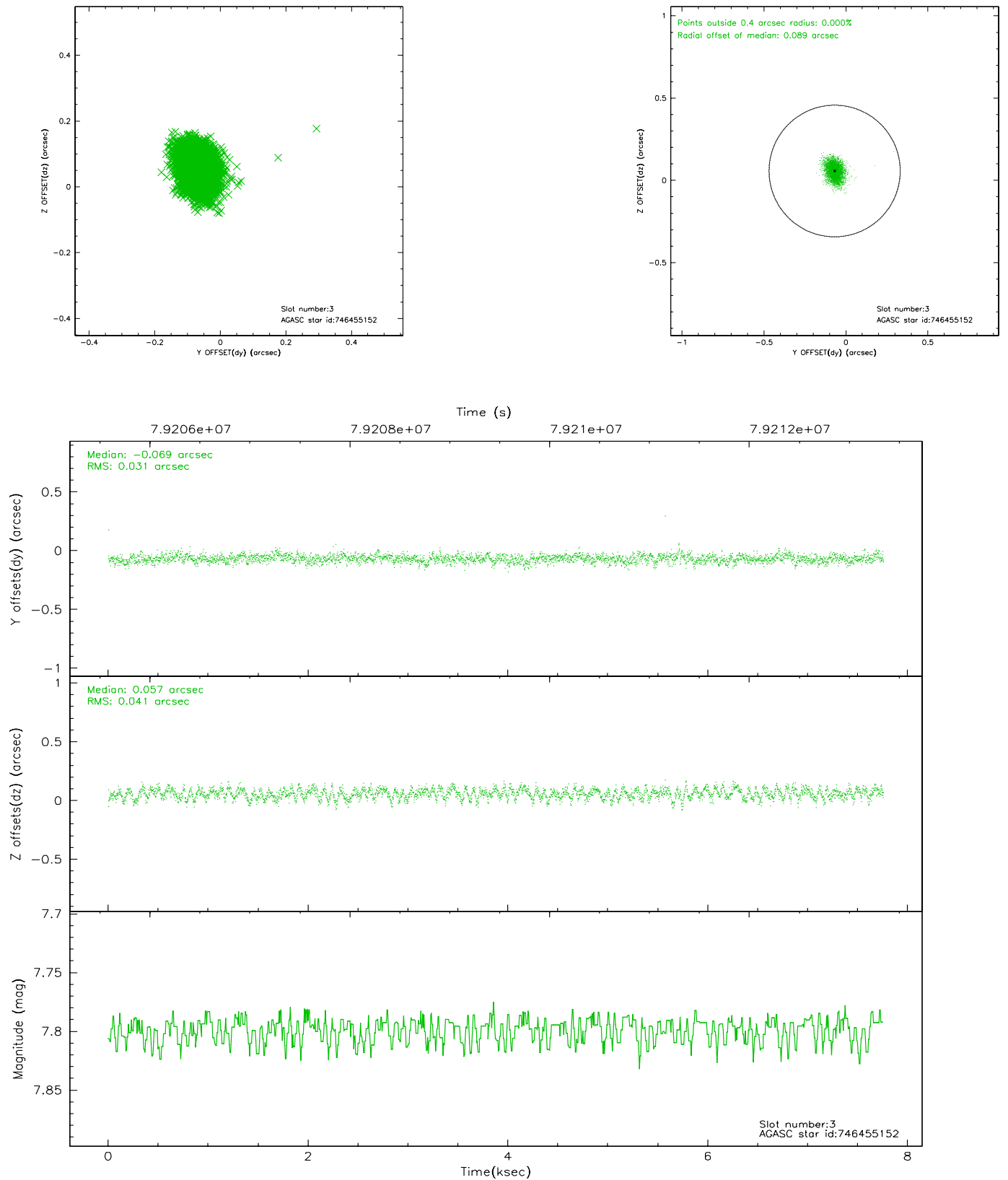


Slot Statistics

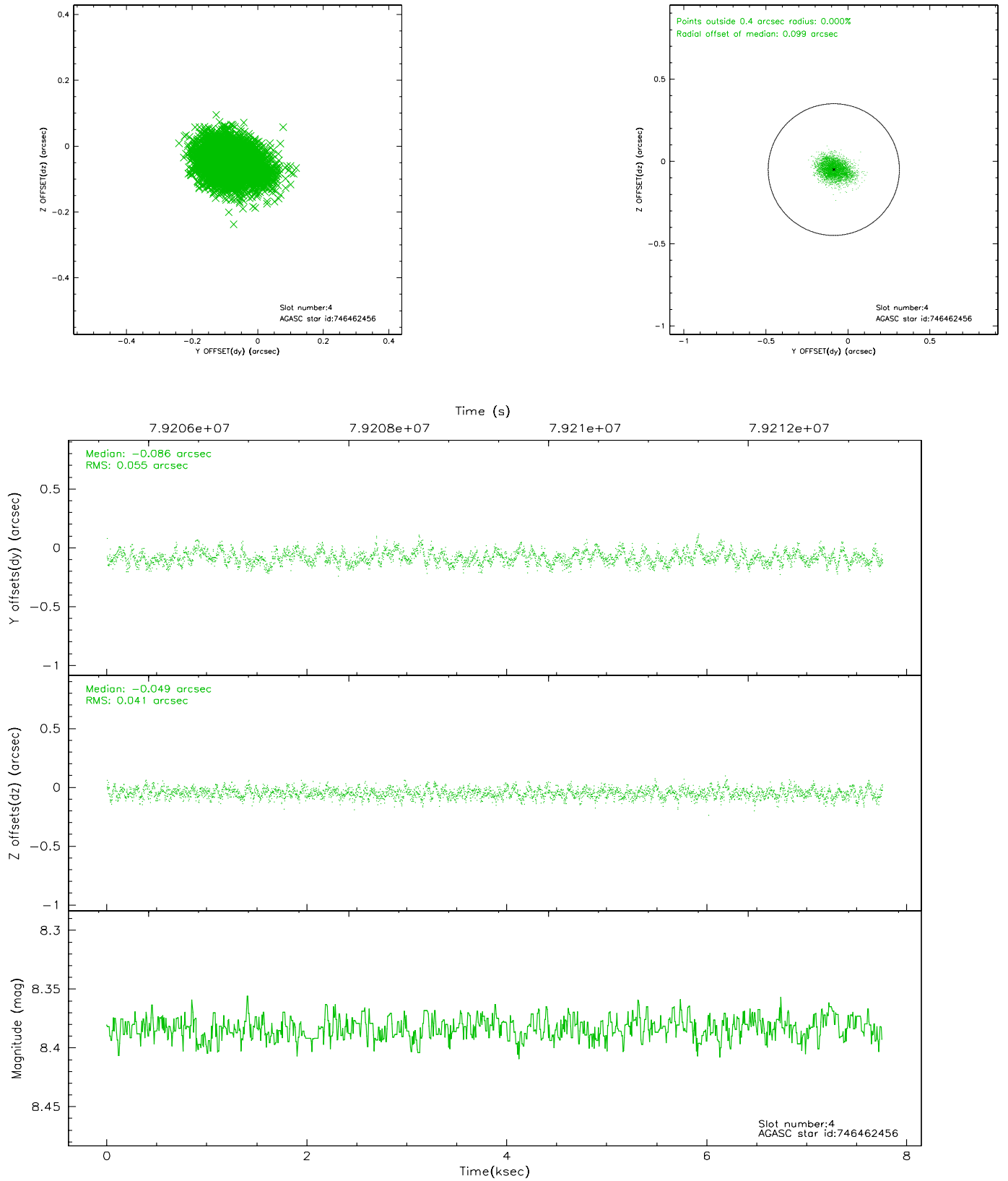
slot	status	id	mag	n_pts	med_dy	med_dz	dr1	dr2	ra	dec	mean_y	mean_z
0	FID	ACIS-I-2	7.17	1891	-0.047	-0.053	0.011	0.018	0.000000	0.000000	-753.72	-737.36
1	FID	ACIS-I-4	7.20	1893	-0.059	0.048	0.007	0.013	0.000000	0.000000	2159.98	1168.70
2	FID	ACIS-I-5	7.24	1893	0.006	0.073	0.009	0.016	0.000000	0.000000	-1806.84	1167.91
3	GUIDE	746455152	7.80	3785	-0.069	0.057	0.054	0.089	278.447893	-9.976732	-1433.27	-1733.61
4	GUIDE	746462456	8.38	3785	-0.086	-0.049	0.073	0.118	278.652171	-10.530173	-1148.02	366.35
5	GUIDE	746455112	8.93	3783	0.191	-0.084	0.064	0.108	278.266531	-10.703234	350.06	284.42
6	GUIDE	746460328	9.81	3785	0.013	0.019	0.089	0.146	278.603974	-9.898096	-2054.72	-1726.93
7	GUIDE	746995400	9.51	3783	-0.053	0.058	0.087	0.142	278.078957	-11.289885	1916.51	1847.60

2.4 Star Slots

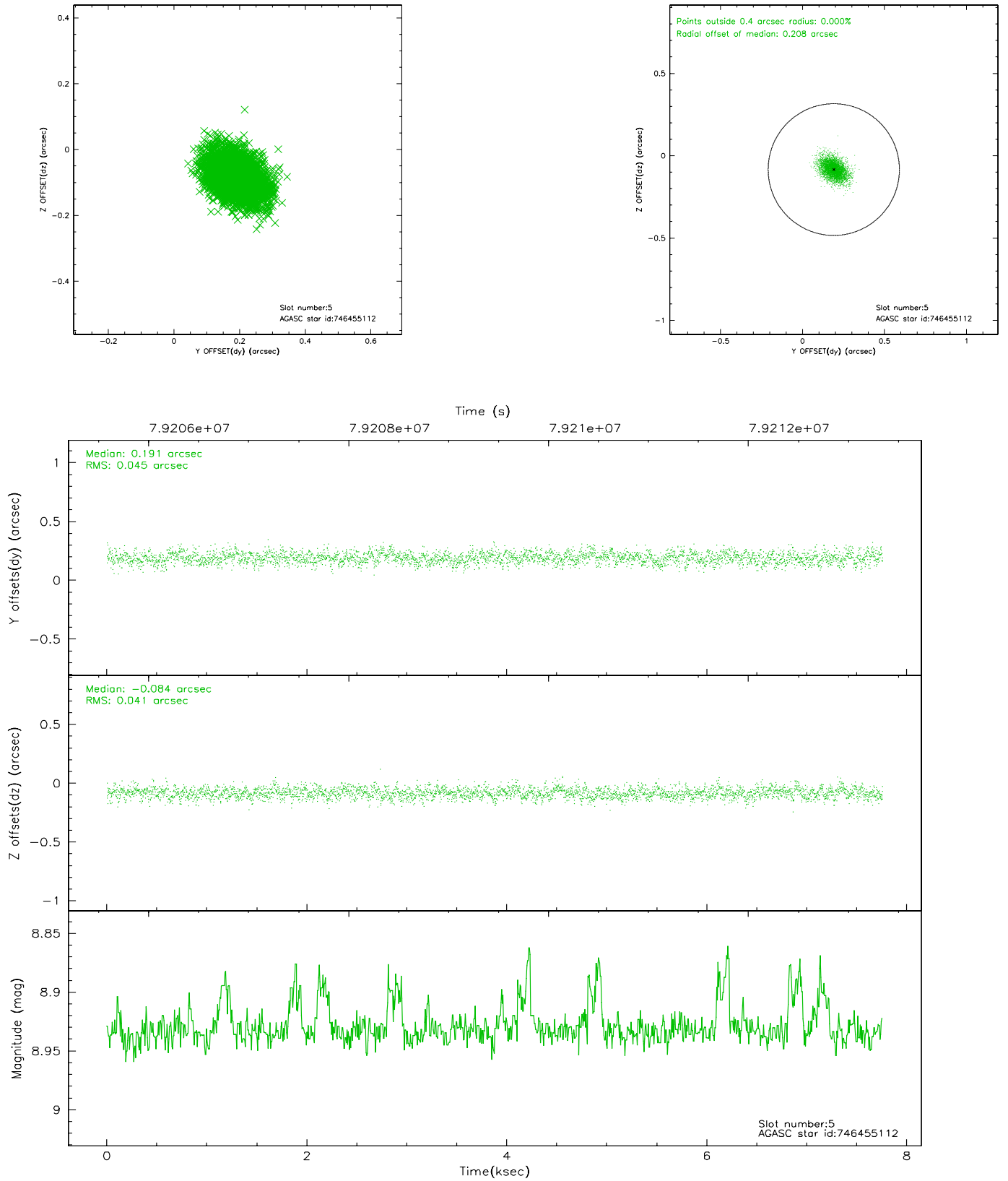
2.4.1 Slot 3



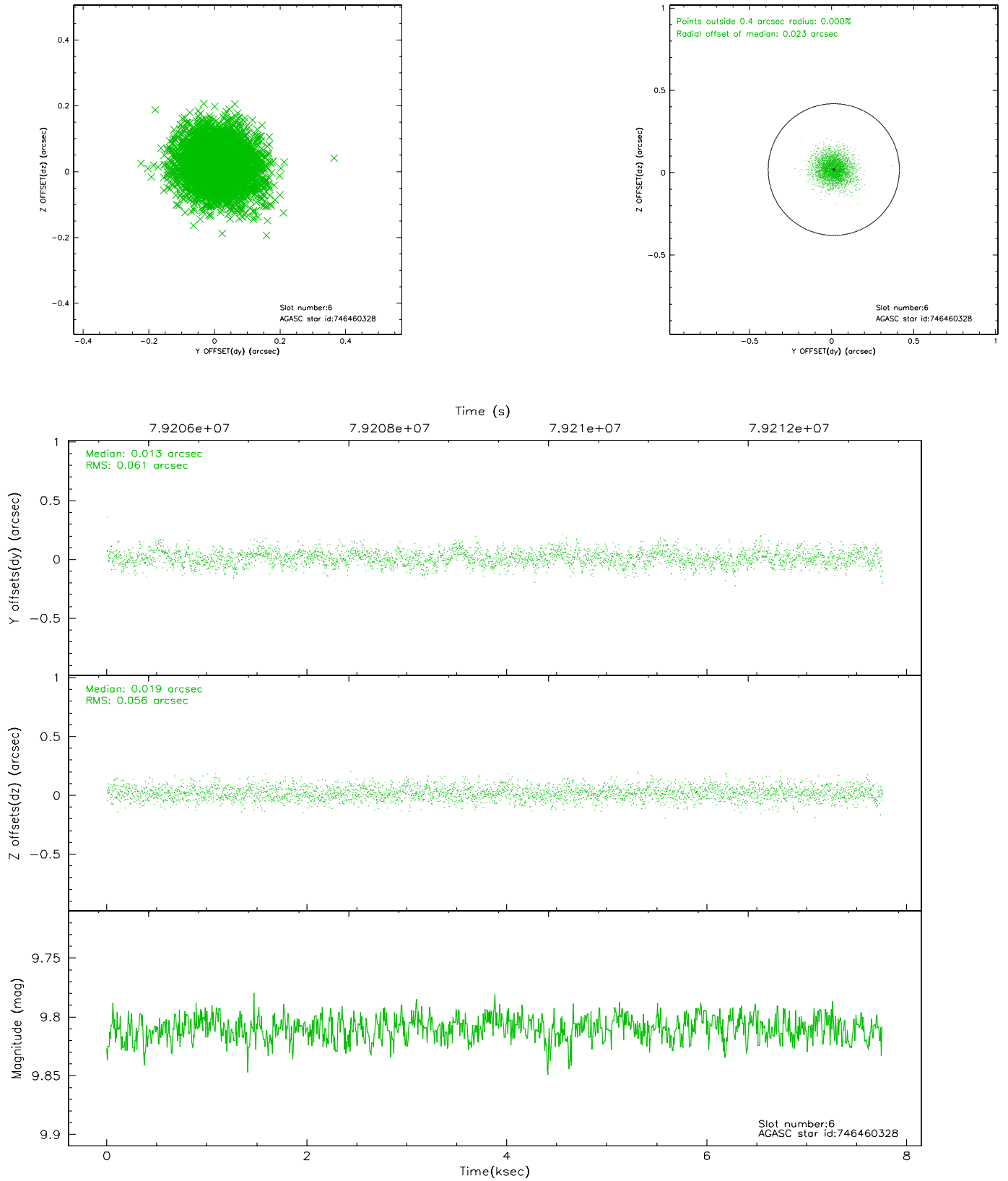
2.4.2 Slot 4



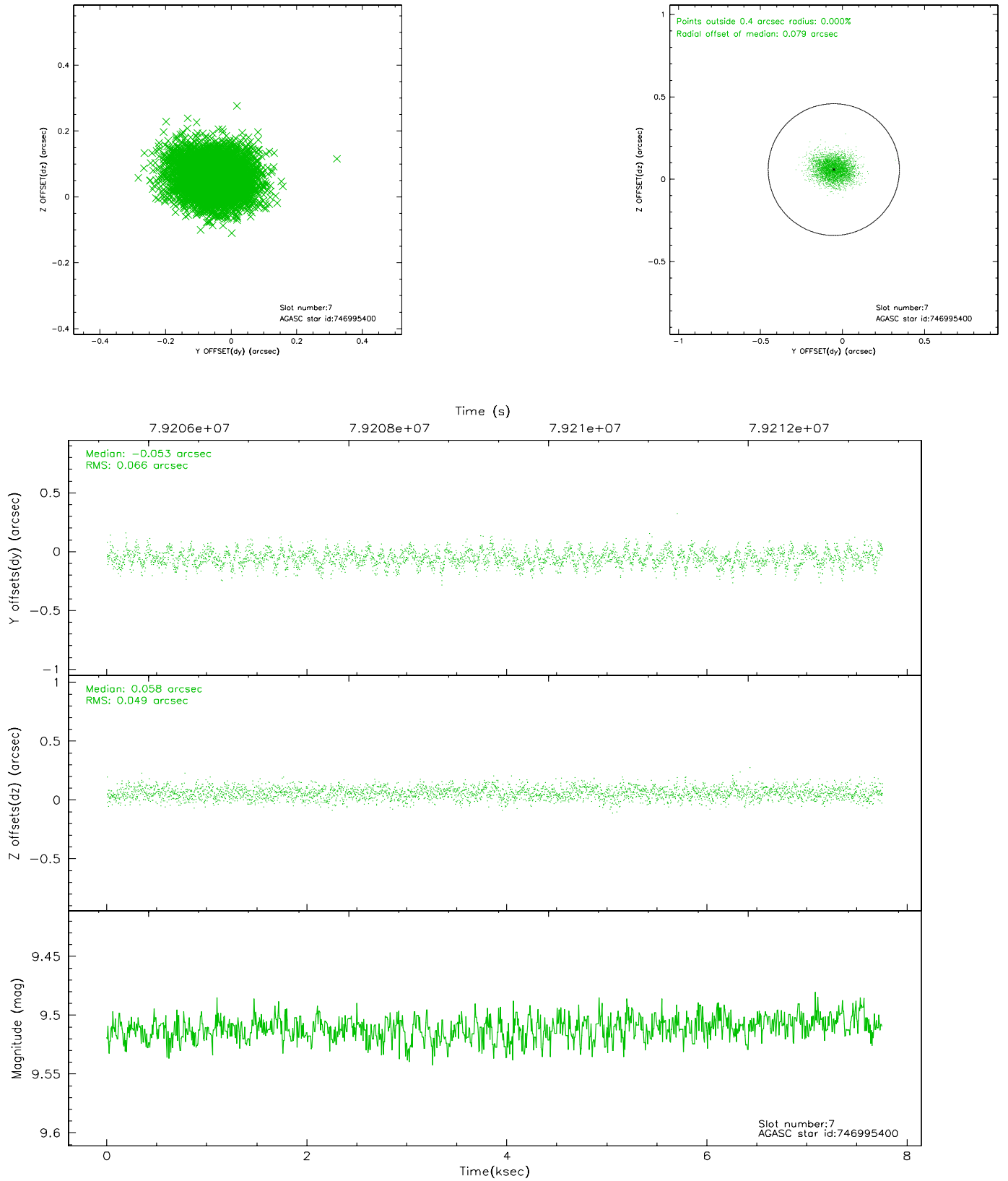
2.4.3 Slot 5



2.4.4 Slot 6

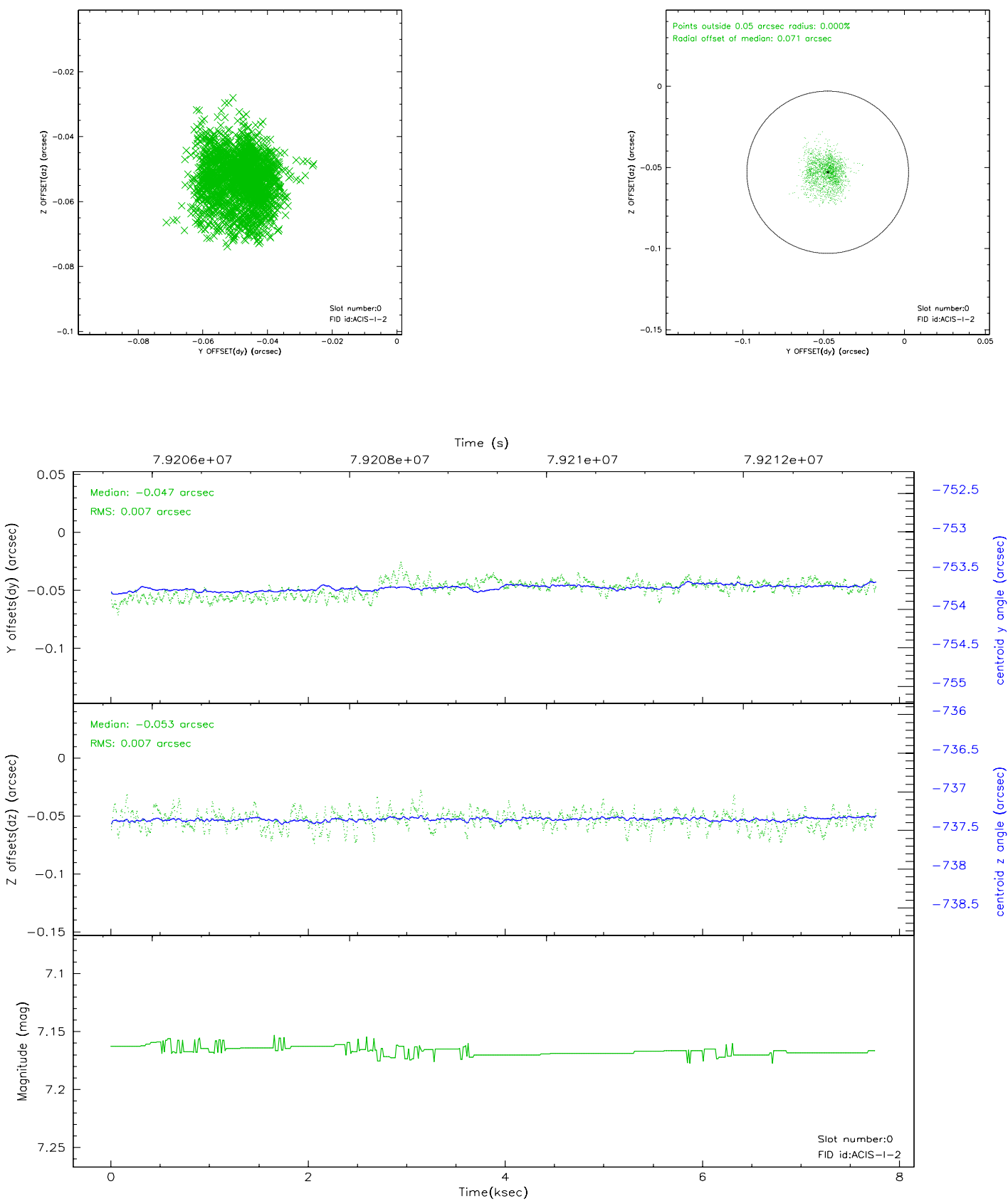


2.4.5 Slot 7

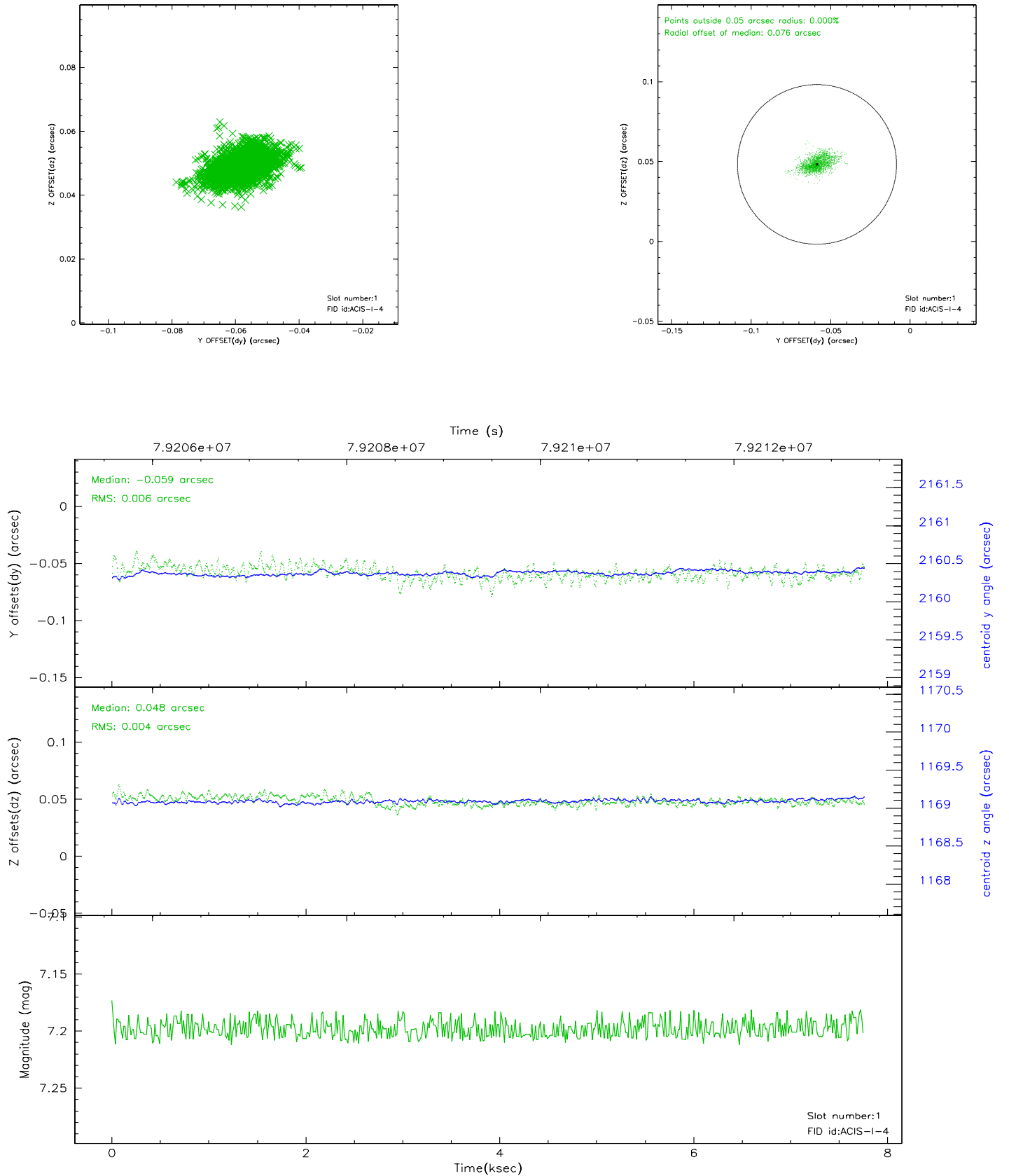


2.5 FID Slots

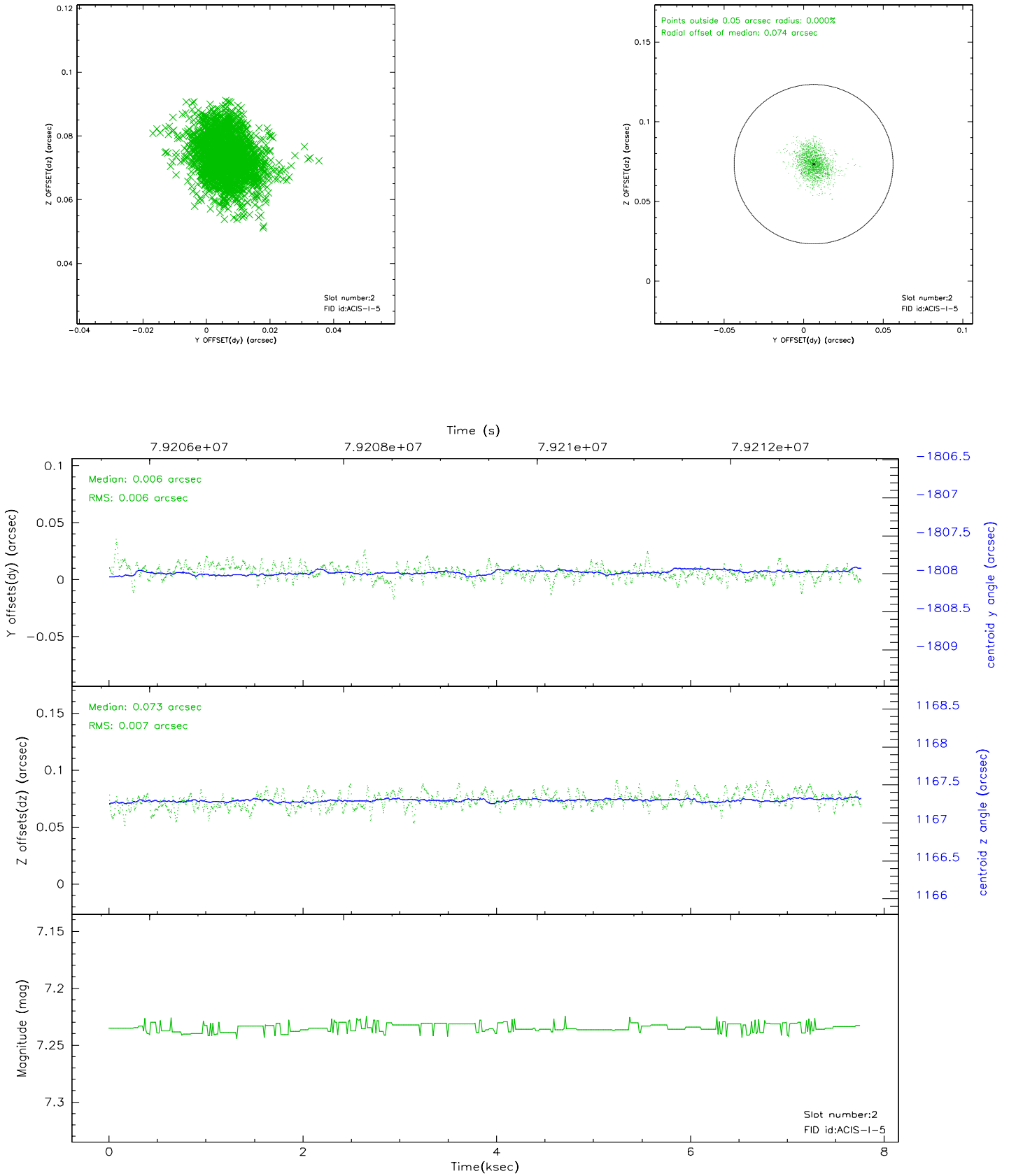
2.5.1 Slot 0



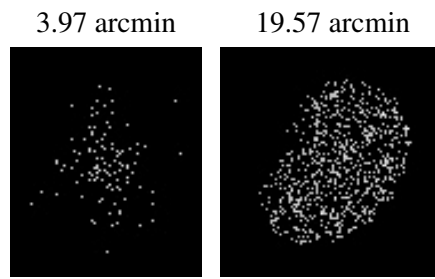
2.5.2 Slot 1



2.5.3 Slot 2



3 Point Sources



A Summary

A.1 Status

V&V Scientist	Joy Nichols
V&V Date (YYYY-MM-DD)	2008.11.20
V&V Edition	2
V&V Disposition and Status	OK
V&V Charge Time	7.315

A.2 Comments

This calibration observation was acquired with the focal plane temperature raised from -120C to -110C, for attempted recalibration of ACIS for the

1999-09-16 through 2000-01-28 period.

=====

This reprocessing of the data applies no

CTI correction because none is available for that temperature.

=====

Focal plane temperature is warmer than -118.7 C degrees during the entire

observation. This temperature is the upper limit of the verified ACIS calibration for the front-illuminated chips. The focal plane temperature

is warmer than -116.7 degrees C for approximately the entire observation.

This temperature is the upper limit of the verified ACIS calibration for the back-illuminated chips.

The ACIS spectral response calibration is less accurate at these warmer temperatures than it is at -119.7 C. Users whose science objectives depend

on the most accurate spectral response (ie: fitting line-rich spectra) may

notice an effect. Users whose science objectives do not depend on the most accurate spectral response should not notice an effect.