

V&V Reference Report

L2 ASCDS Version : 8.2.1

Observation 173 - L2 Version 4

Chandra X-Ray Center

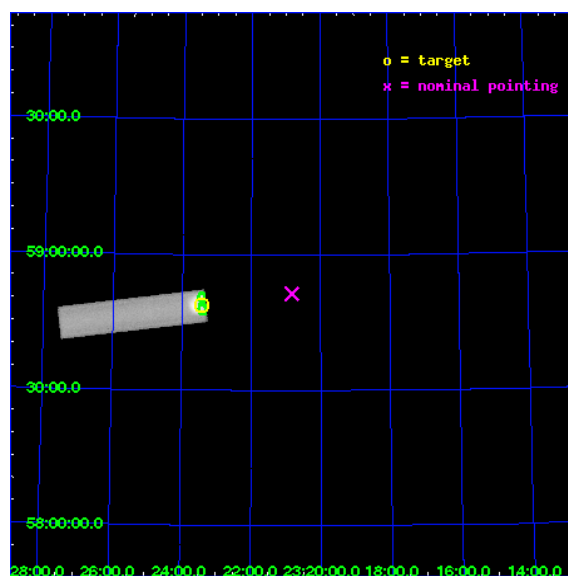
L2 Processing Date : Jan 13 2010

Contents

1	Front	2
2	OBI	3
2.1	OBI	3
2.1.1	Images	3
2.1.2	Parameters	4
2.1.3	Events	4
2.2	Compared Parameters	5
2.3	Aspect	6
2.4	Star Slots	9
2.4.1	Slot 3	9
2.4.2	Slot 4	10
2.4.3	Slot 5	11
2.4.4	Slot 6	12
2.4.5	Slot 7	13
2.5	FID Slots	14
2.5.1	Slot 0	14
2.5.2	Slot 1	15
2.5.3	Slot 2	16
3	Point Sources	17
A	Summary	18
A.1	Status	18
A.2	Comments	18

1 Front

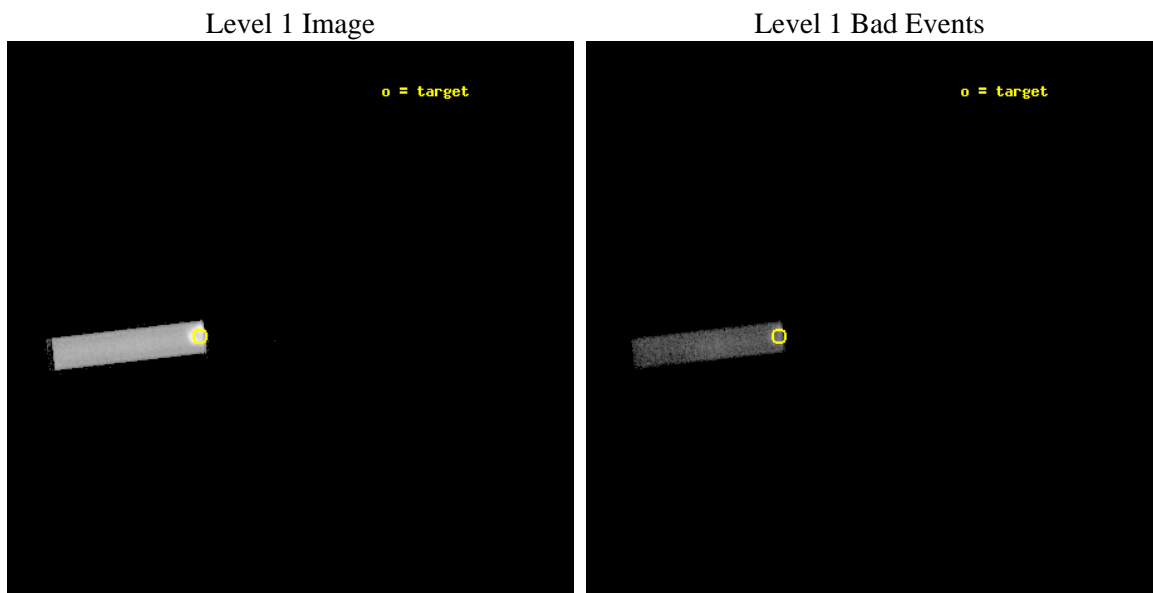
seq_num	590041	Sequence number
obs_id	173	Observation id
title	HRC RESPONSE TO CASA	Proposal title
observer	Dr. CXC Calibration	Principal investigator
object	CAS A [HRC-S, Offsets=-20,0,0 +Y MCP]	Source name
ra_targ	350.8575	Observer's specified target RA
dec_targ	58.814833	Observer's specified target Dec
ra_nom	350.20763987237	Nominal RA
dec_nom	58.856889092082	Nominal Dec
roll_nom	173.31250927773	Nominal Roll
revision	4	Processing version of data
ontime	1724.3063119128	[s]
livetime	1698.5240687224	Ontime multiplied by DTCOR
l2events	159867	Number of level 2 events



2 OBI

2.1 OBI

2.1.1 Images



2.1.2 Parameters

obi_num	0	Obi number	sched_exp_time	2000.000000	Scheduled observation exposure time
ascdsver	8.2.1	Processing system revision	ontime	1724.3063119128	[s]
caldbver	4.1.5	 	l1events	202533	Number of level 1 events
date	2010-01-13T04:37:54	Date and time of file creation			
revision	3	Processing version of data			

2.1.3 Events

Level 1 Events

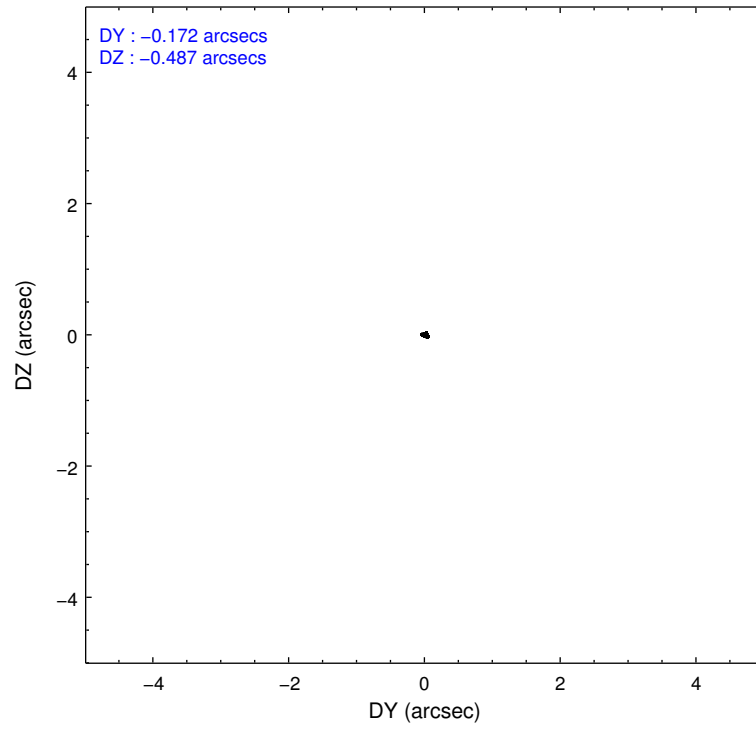
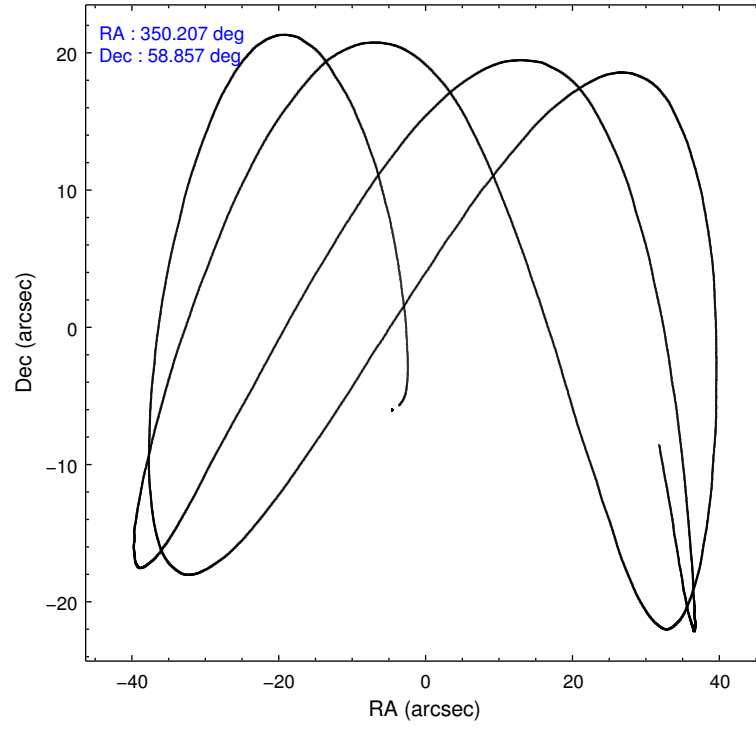
	segment 1	segment 2	segment 3
level 1 events	202485	48	0
rejected events	29007	11	0
rejected %	14%	22%	0%

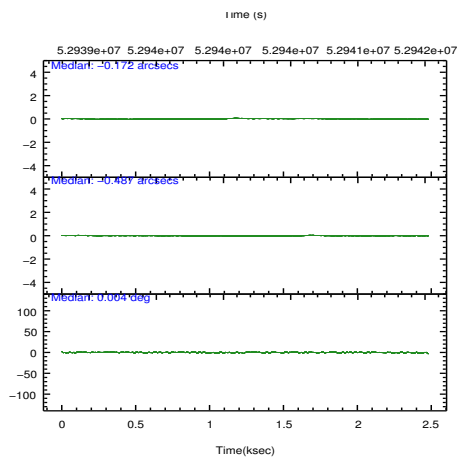
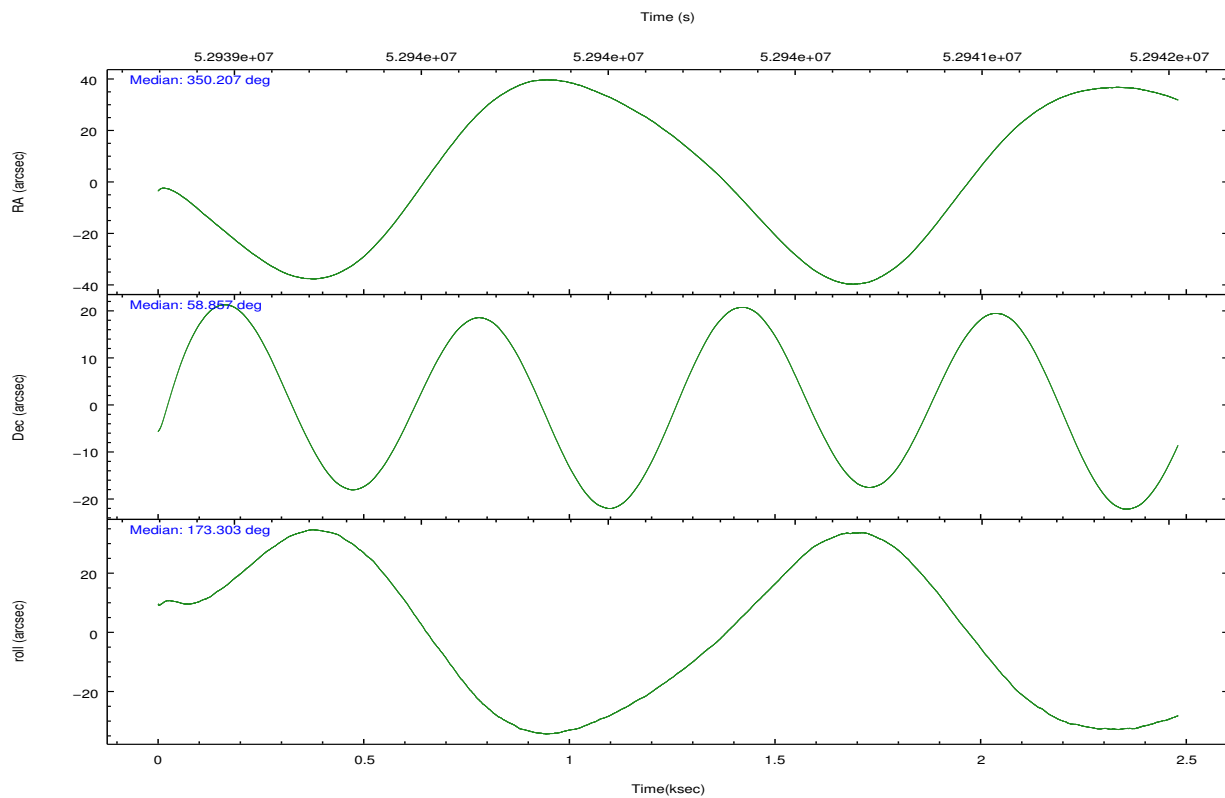
2.2 Compared Parameters

Parameter	Planned	Actual
Instrument	HRC	HRC
Detector	HRC-S	HRC-S
Grating	NONE	NONE
Data mode	OBSERVING	OBSERVING
Observation mode	POINTING	POINTING
Pointing RA	350.258921	350.2076398723663
Pointing Dec	58.868952	58.8568890920816
Pointing Roll	173.201227	173.3125092777267
SIM focus pos (mm)	-1.429586	-1.370509375638239
SIM defocus (mm)	0.1037507710433287	0.1628272637660579
SIM translation stage pos (mm)	250.455976	250.466033080201
SIM translation stage offset (mm)	0	-0.01005468664627074
Observation start time	52939400.184000	52938245.864443
Observation start date	1999-09-05T17:22:16	1999-09-05T17:04:05
Observation end time	52941400.184000	52941533.552061
Observation end date	1999-09-05T17:55:36	1999-09-05T17:58:53

Parameter	Planned	Actual
Obspar format version number	6	6
Obspar file type	PREDICTED	ACTUAL
Obspar update status	NONE	UPDATED

2.3 Aspect



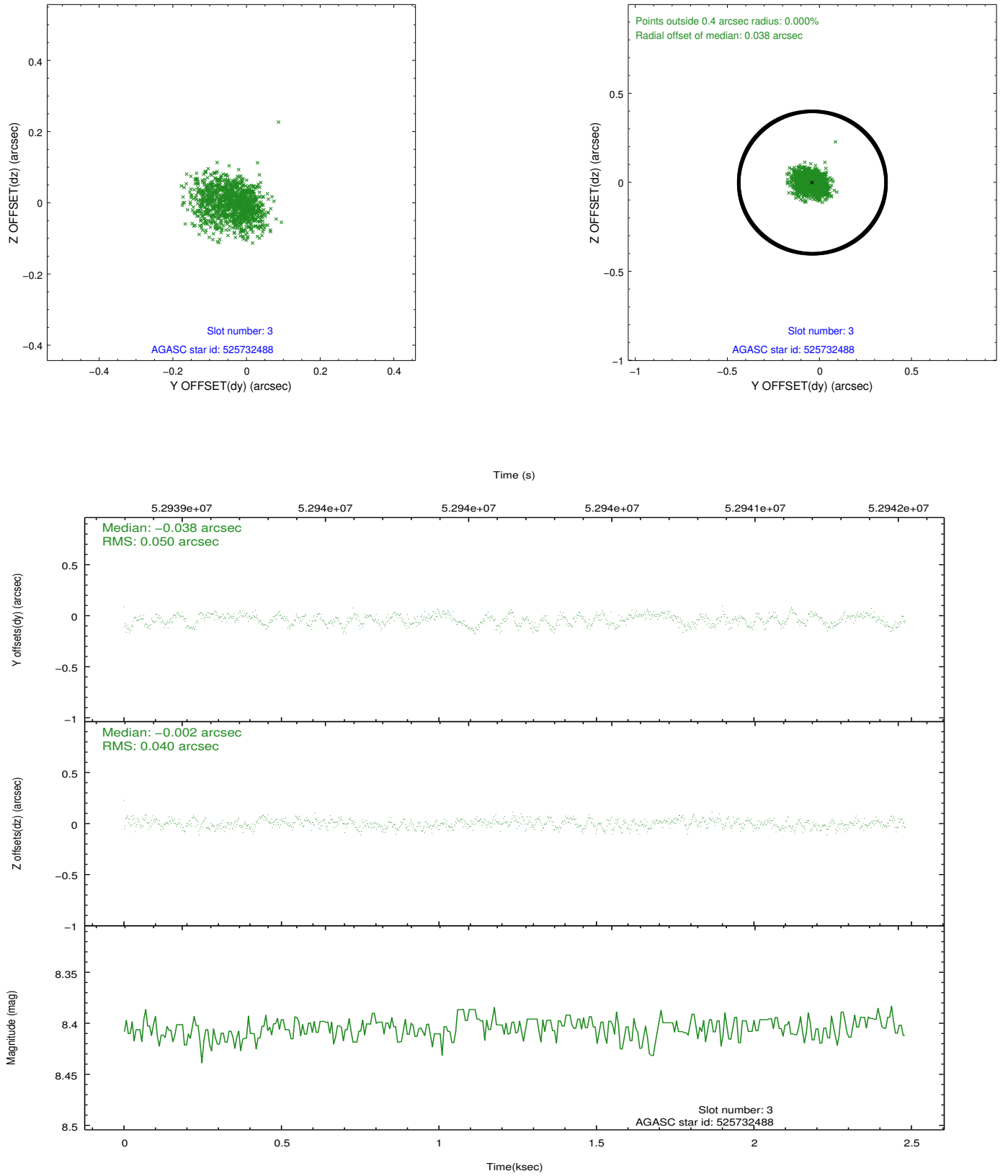


Slot Statistics

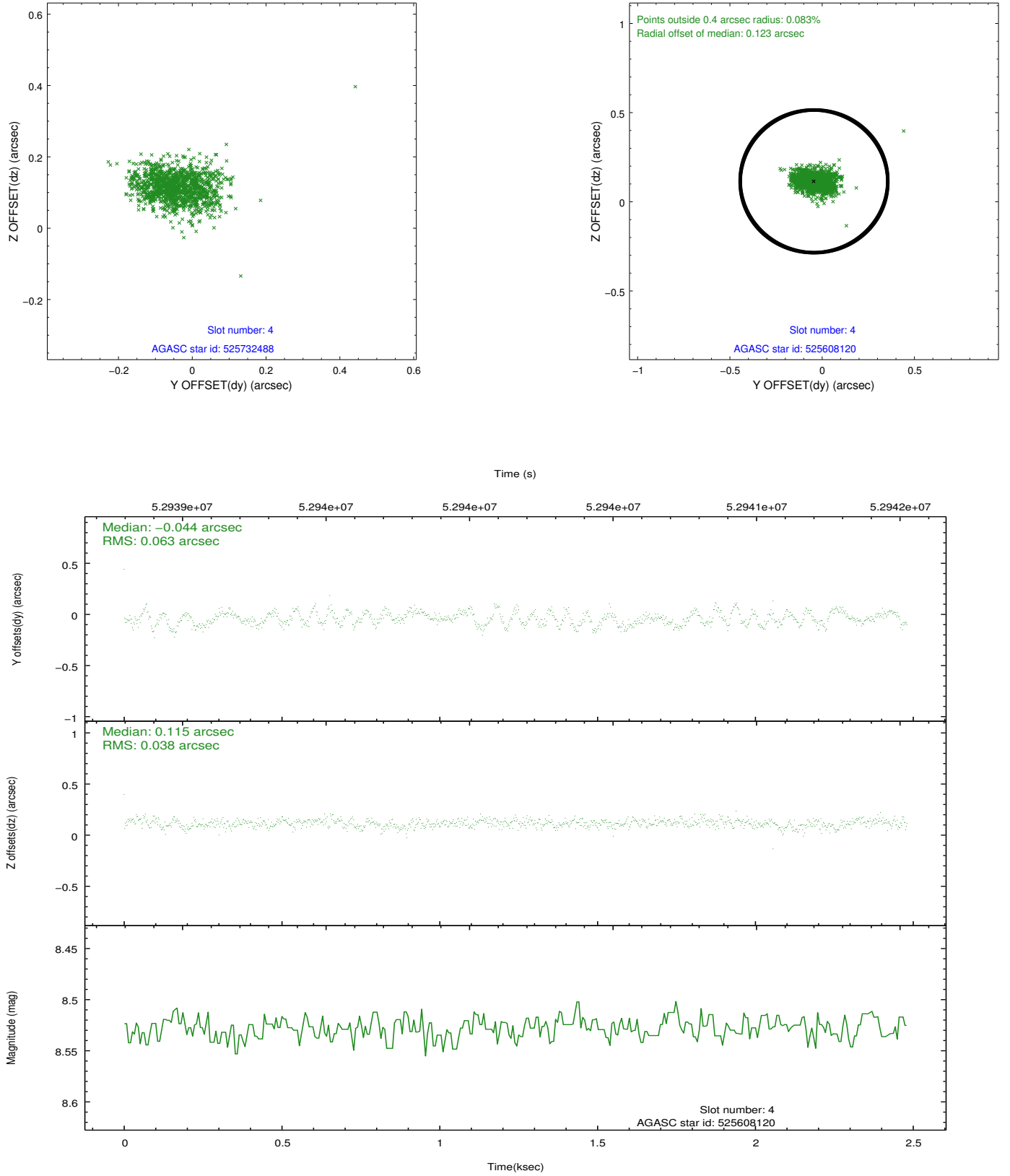
slot	status	id	mag	n_pts	med_dy	med_dz	dr1	dr2	ra	dec	mean_y	mean_z
0	FID	HRC-S-1	7.00	1211	0.150	-0.064	0.007	0.014	0.000000	0.000000	-1153.87	-447.63
1	FID	HRC-S-3	7.01	1211	0.089	-0.124	0.008	0.017	0.000000	0.000000	-1157.47	581.48
2	FID	HRC-S-4	6.99	1211	0.149	-0.109	0.005	0.009	0.000000	0.000000	1243.58	584.60
3	GUIDE	525732488	8.40	1211	-0.038	-0.002	0.068	0.110	350.087090	58.516915	169.45	1296.54
4	GUIDE	525608120	8.53	1211	-0.044	0.115	0.076	0.123	349.602222	59.477956	1451.88	-2039.06
5	GUIDE	525735976	8.85	1211	0.012	-0.165	0.079	0.128	350.142956	58.277622	-34.28	2138.01
6	GUIDE	525734296	9.51	1208	0.137	-0.061	0.124	0.193	351.276372	58.418153	-2096.37	1371.58
7	GUIDE	525601208	9.21	1210	-0.066	0.113	0.092	0.145	349.910779	59.483724	891.65	-2122.27

2.4 Star Slots

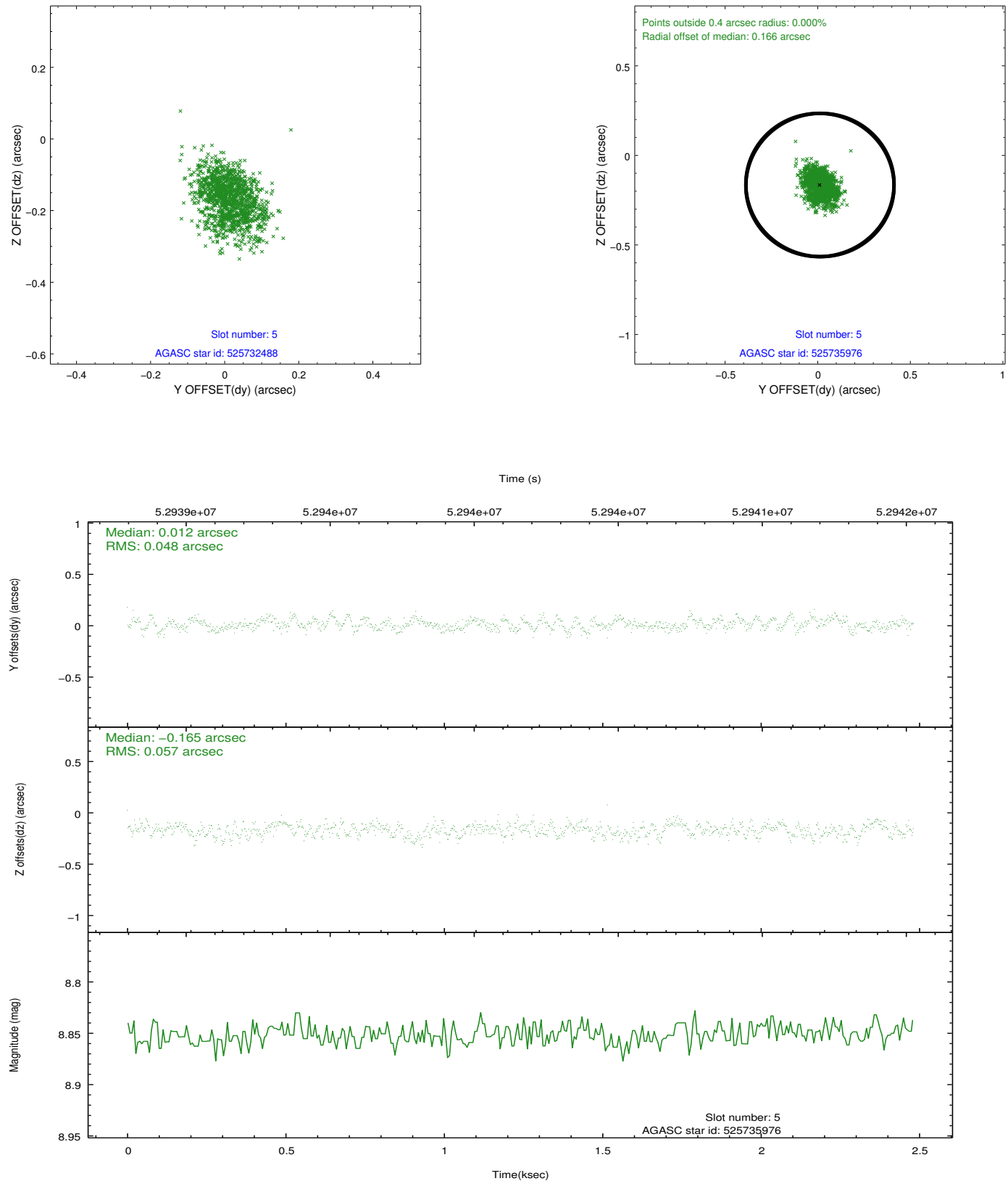
2.4.1 Slot 3



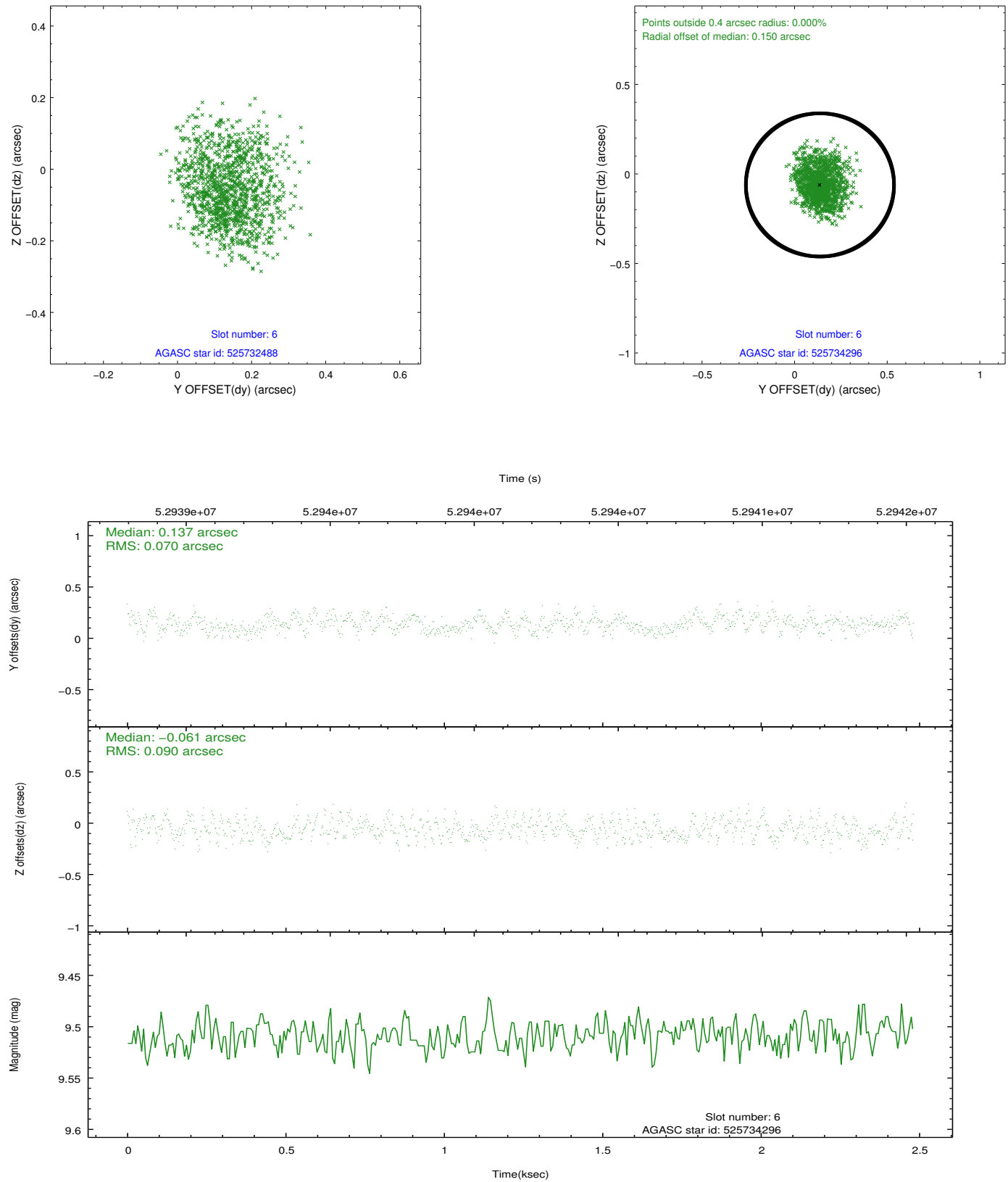
2.4.2 Slot 4



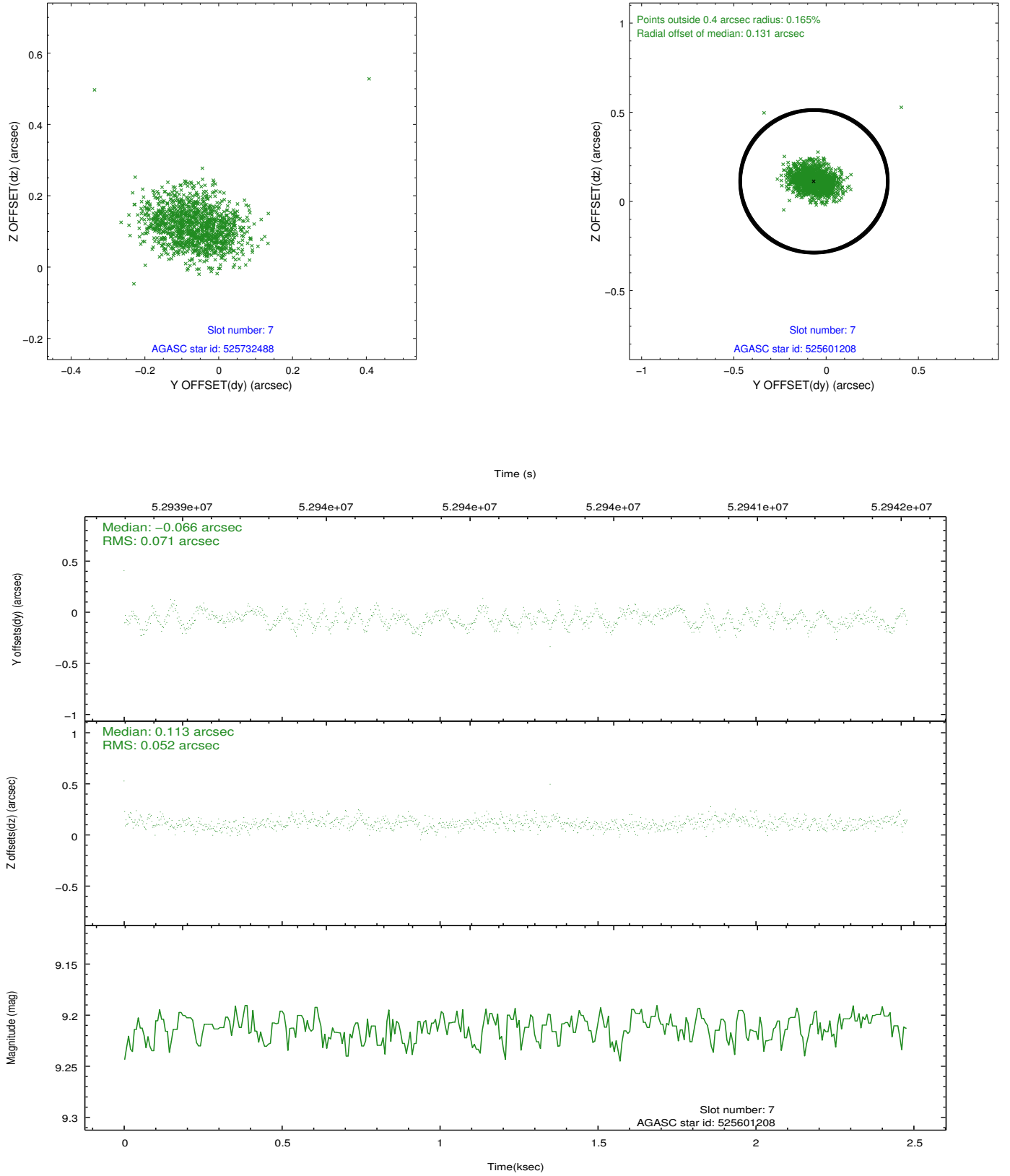
2.4.3 Slot 5



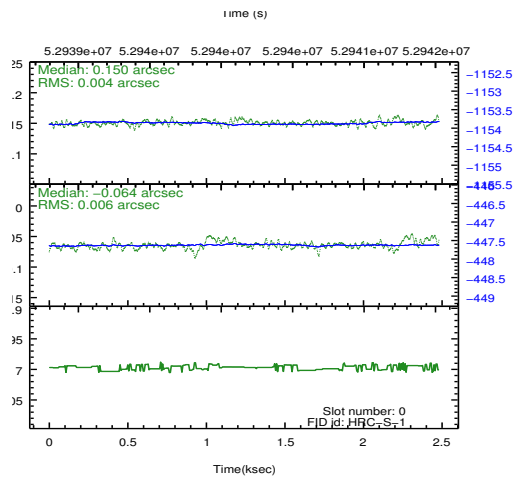
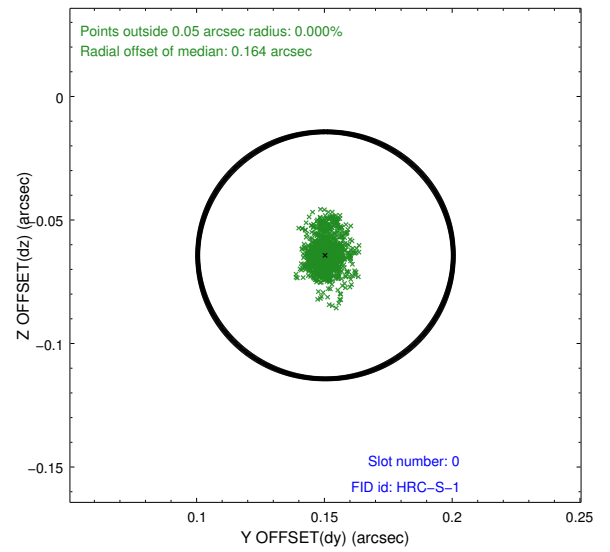
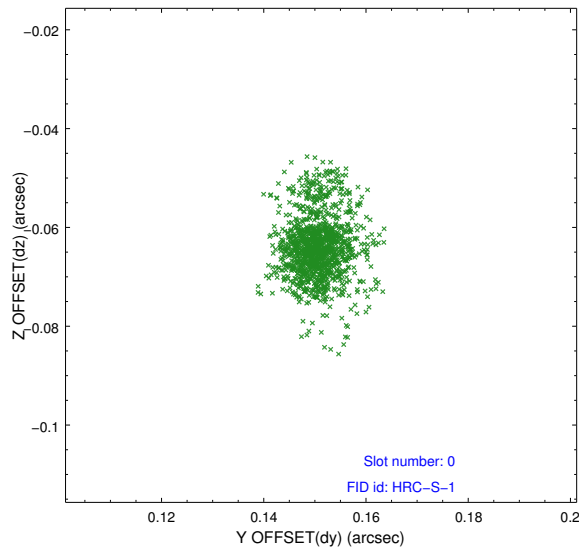
2.4.4 Slot 6



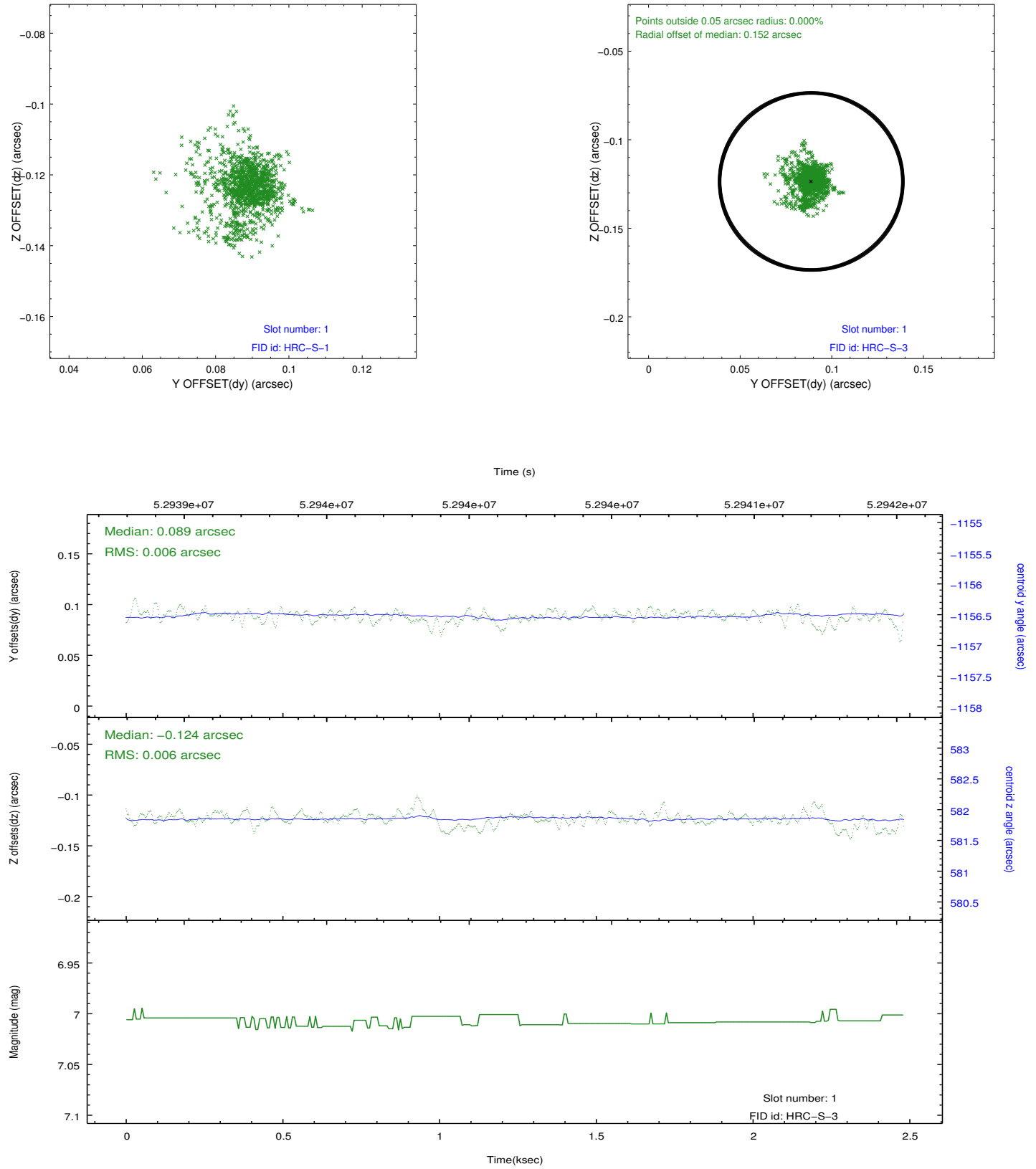
2.4.5 Slot 7



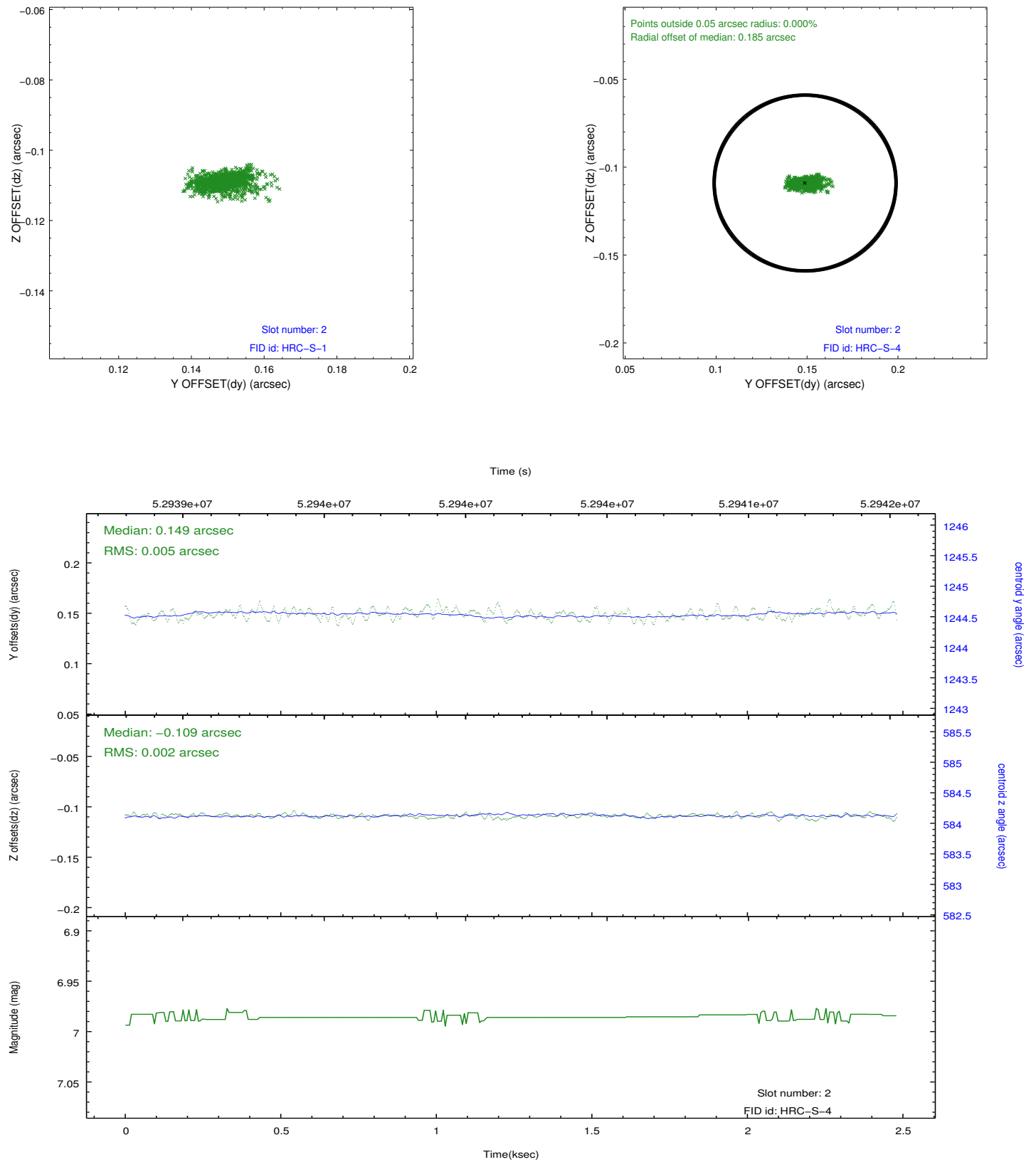
2.5.1 Slot 0



2.5.2 Slot 1



2.5.3 Slot 2



3 Point Sources

A Summary

A.1 Status

V&V Scientist	Beth Sundheim
V&V Date (YYYY-MM-DD)	2010.02.01
V&V Edition	1
V&V Disposition and Status	OK
V&V Charge Time	1.724

A.2 Comments