

# V&V Reference Report

## L2 ASCDS Version : 7.6.10

Observation 1643 - L2 Version 001  
Chandra X-Ray Center

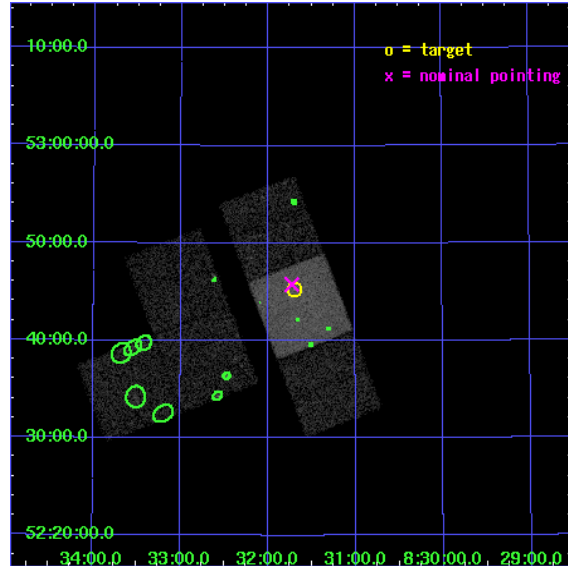
L2 Processing Date : Jun 12 2007

## Contents

<b>1</b>	<b>Front</b>	<b>2</b>
<b>2</b>	<b>OBI</b>	<b>3</b>
2.1	OBI . . . . .	3
2.1.1	Images . . . . .	3
2.1.2	Bias . . . . .	3
2.1.3	Parameters . . . . .	4
2.1.4	Events . . . . .	4
2.2	Compared Parameters . . . . .	5
2.3	Aspect . . . . .	6
2.4	Star Slots . . . . .	9
2.4.1	Slot 3 . . . . .	9
2.4.2	Slot 4 . . . . .	10
2.4.3	Slot 5 . . . . .	11
2.4.4	Slot 6 . . . . .	12
2.4.5	Slot 7 . . . . .	13
2.5	FID Slots . . . . .	14
2.5.1	Slot 0 . . . . .	14
2.5.2	Slot 1 . . . . .	15
2.5.3	Slot 2 . . . . .	16
<b>3</b>	<b>Point Sources</b>	<b>17</b>
<b>A</b>	<b>Summary</b>	<b>18</b>
A.1	Status . . . . .	18
A.2	Comments . . . . .	18

# 1 Front

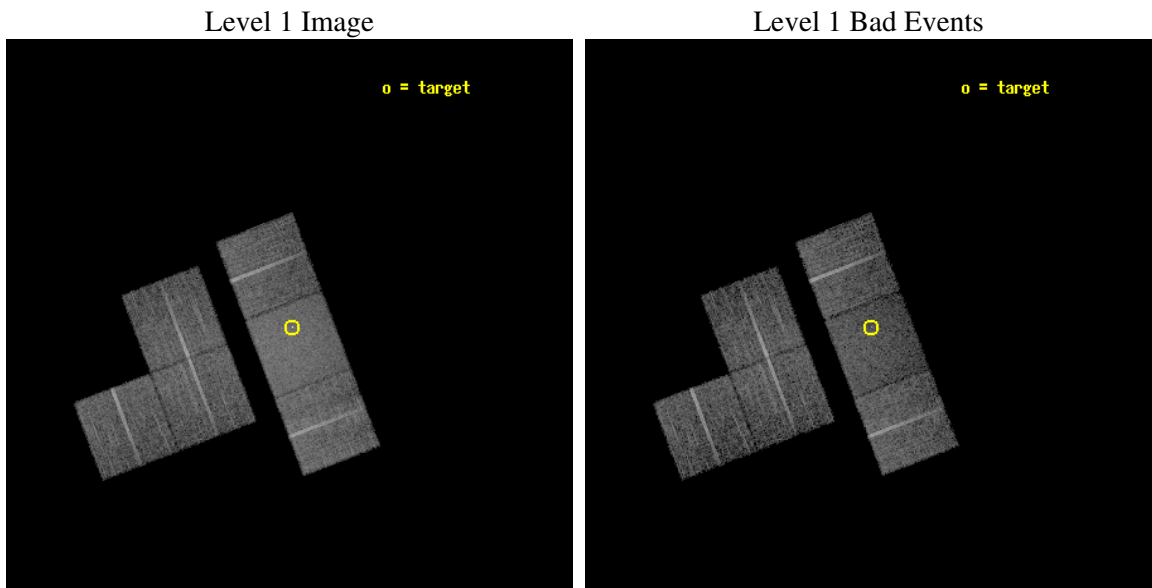
seq_num	700259
obs_id	1643
title	CHANDRA OBSERVATIONS OF GRAVITATIONALLY LENSED QUASARS WITH INTRINSIC ABSORPTION
observer	Prof. Gordon Garmire
object	APM08279+5255
dtcycle	0
cycle	P
ra_targ	127.923333
dec_targ	52.754667
ra_nom	127.93177208999
dec_nom	52.76306479345
roll_nom	69.086536648144
revision	2
ontime	9251.2000086159
livetime	9134.0557437029
ontime1	9251.2000086159
ontime2	9251.2000086159
ontime3	9251.2000086159
ontime6	9247.9591680616
ontime7	9251.2000086159
ontime8	9251.2000086159
l2events	64331



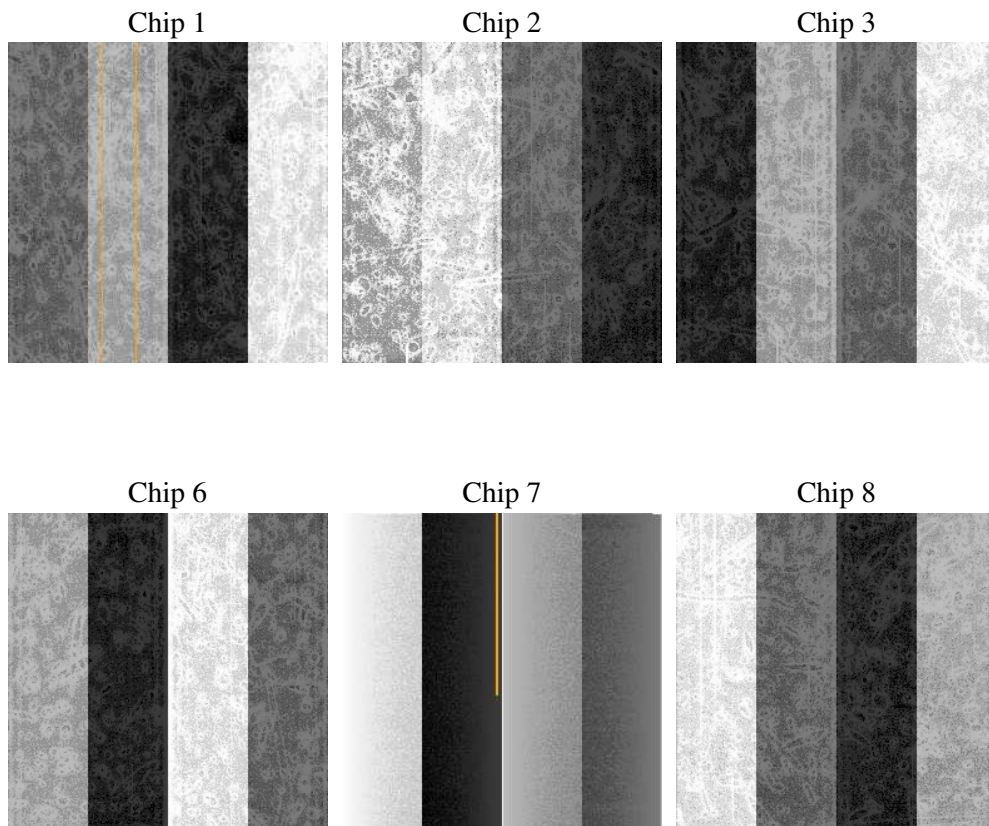
## 2 OBI

### 2.1 OBI

#### 2.1.1 Images



#### 2.1.2 Bias



### 2.1.3 Parameters

obi_num	0
ascdsver	7.6.10
caldsver	3.4.0
date	2007-06-12T07:05:36
revision	2

sched_exp_time	9300.000000
ontime	9251.2000086159
ontime1	9251.2000086159
ontime2	9251.2000086159
ontime3	9251.2000086159
ontime6	9247.9591680616
ontime7	9251.2000086159
ontime8	9251.2000086159
l1events	383454

### 2.1.4 Events

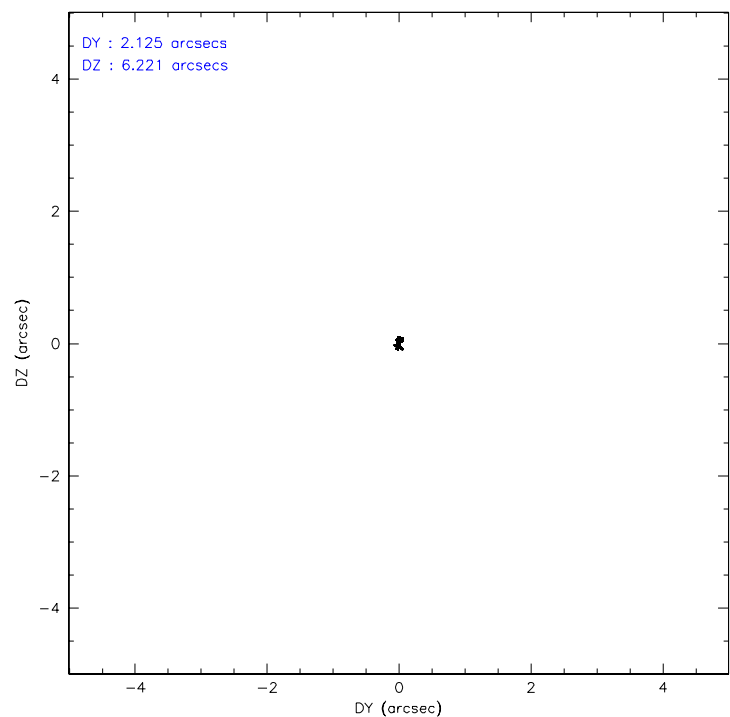
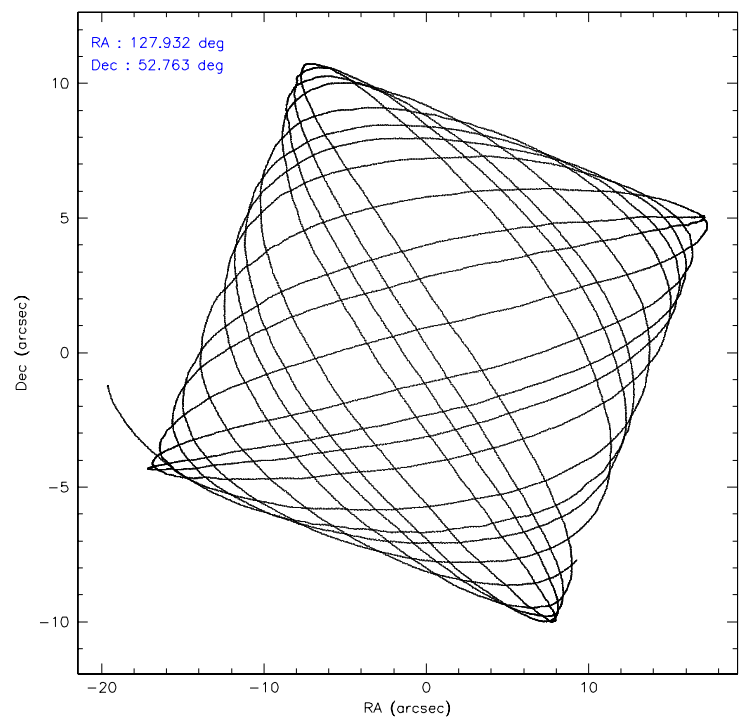
	ccd 1	ccd 2	ccd 3	ccd 6	ccd 7	ccd 8
level 1 events	55947	57356	58506	60076	77741	73828
rejected events	48841	50842	51995	53209	42163	58985
rejected %	87%	88%	88%	88%	54%	79%

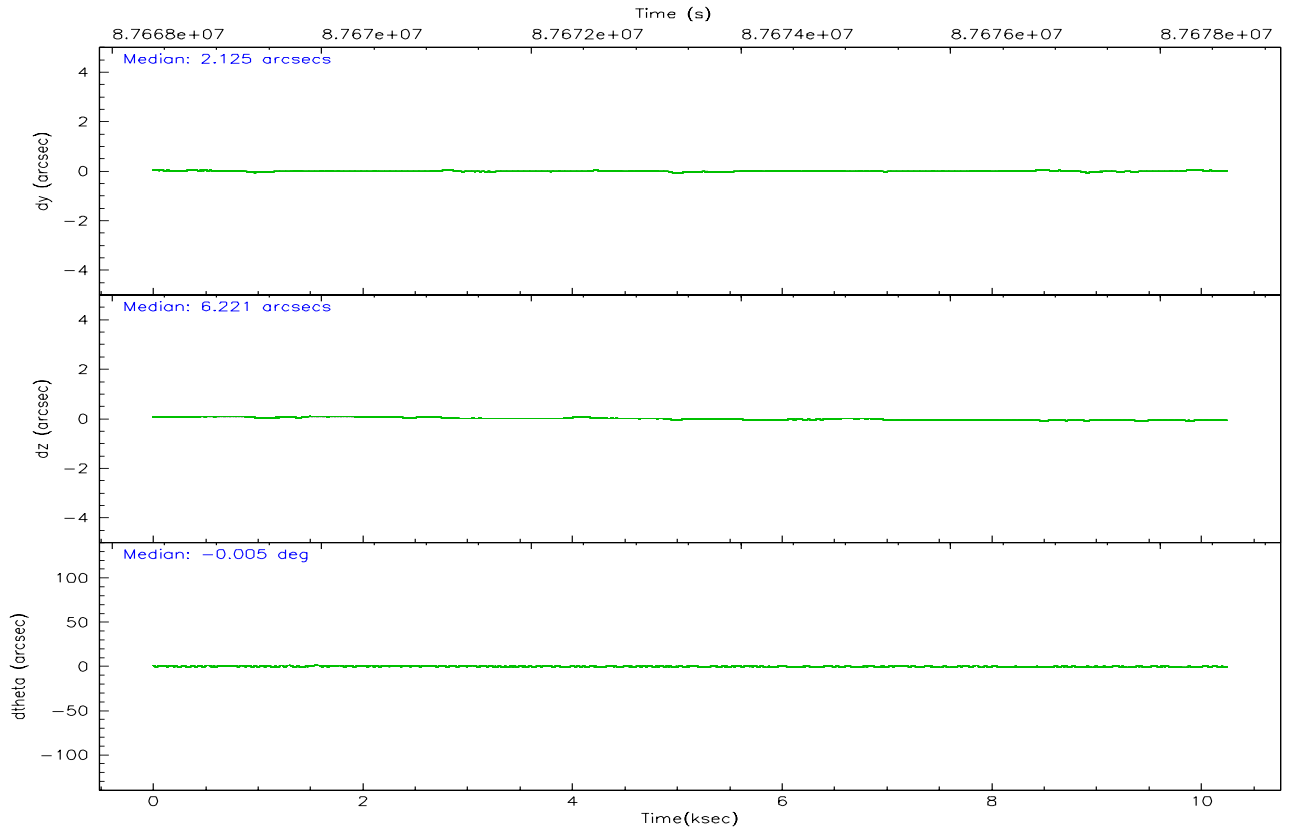
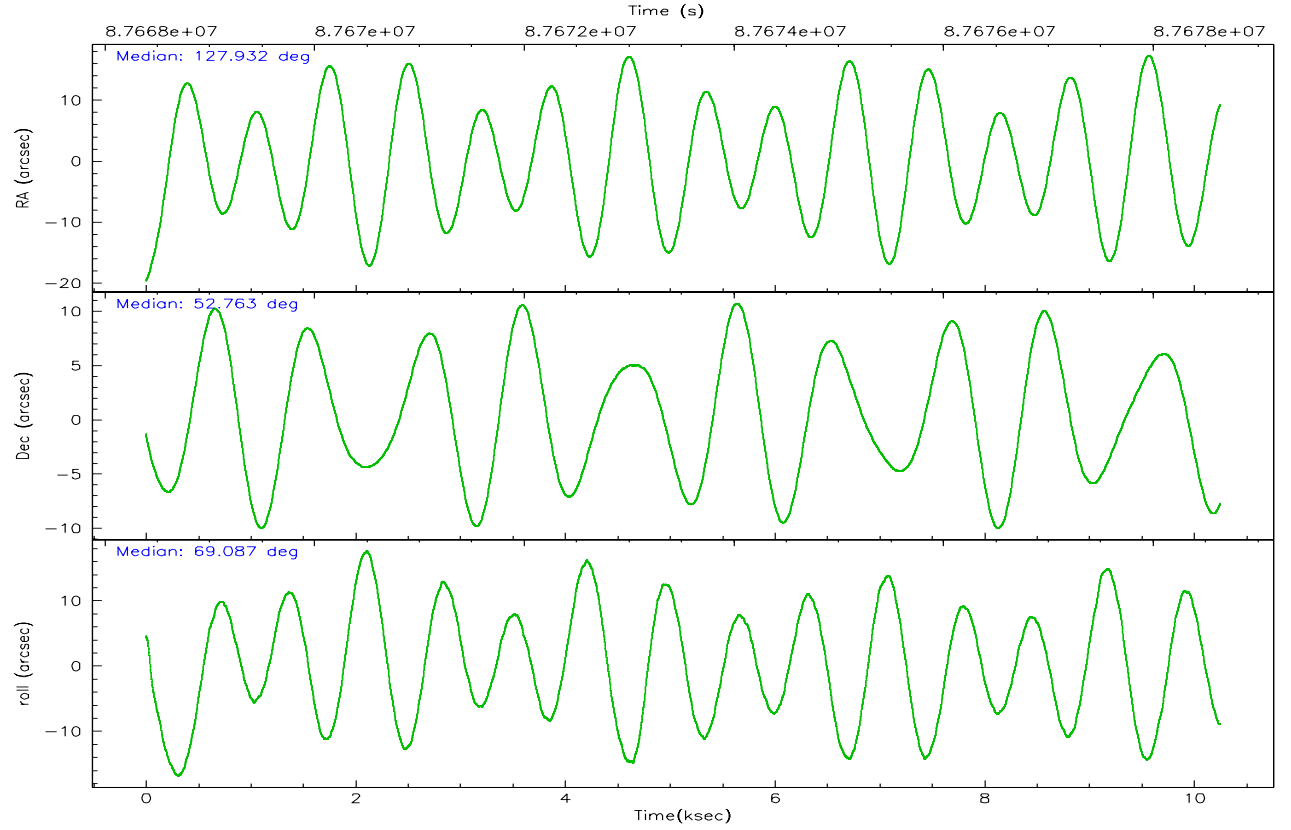
	ccd 1	ccd 2	ccd 3	ccd 6	ccd 7	ccd 8
grade 0 events	2907	2854	2893	2909	3871	4873
	5%	4%	4%	4%	4%	6%
grade 1 events	32	24	30	27	76	38
	0%	0%	0%	0%	0%	0%
grade 2 events	1442	1331	1307	1328	7045	3011
	2%	2%	2%	2%	9%	4%
grade 3 events	708	578	622	675	3248	1619
	1%	1%	1%	1%	4%	2%
grade 4 events	722	629	628	623	3157	1447
	1%	1%	1%	1%	4%	1%
grade 5 events	2181	1805	1971	2385	6984	2864
	3%	3%	3%	3%	8%	3%
grade 6 events	1331	1126	1064	1335	18278	3936
	2%	1%	1%	2%	23%	5%
grade 7 events	46624	49009	49991	50794	35082	56040
	83%	85%	85%	84%	45%	75%

## 2.2 Compared Parameters

Parameter	Planned	Actual	Parameter	Planned	Actual
Instrument	ACIS	ACIS	Obspar format version number	6	6
Detector	ACIS-123678	ACIS-123678	Obspar file type	PREDICTED	ACTUAL
Grating	NONE	NONE	Obspar update status	NONE	UPDATED
Data mode	FAINT	FAINT	Number of optional ACIS chips dropped	0	0
Observation mode	POINTING	POINTING	On-chip summing requested	N	N
Pointing RA	127.939272	127.9317720899874	Subarray requested	NONE	NONE
Pointing Dec	52.736126	52.76306479345033	Alternating exposures requested	N	N
Pointing Roll	68.923944	69.08653664814406	Primary exposure time	0.000000	3.2
SIM focus pos (mm)	-0.684267	-0.6828225247311905			
SIM defocus (mm)	0	0.001444936568705701			
SIM translation stage pos (mm)	-190.132523	-190.1425803651734			
SIM translation stage offset (mm)	0	0.01005778216563158			
Observation start time	87669338.184000	87667996.758889			
Observation start date	2000-10-11T16:34:34	2000-10-11T16:13:16			
Observation end time	87678638.184000	87679481.371823			
Observation end date	2000-10-11T19:09:34	2000-10-11T19:24:41			
Read mode	TIMED	TIMED			

## 2.3 Aspect





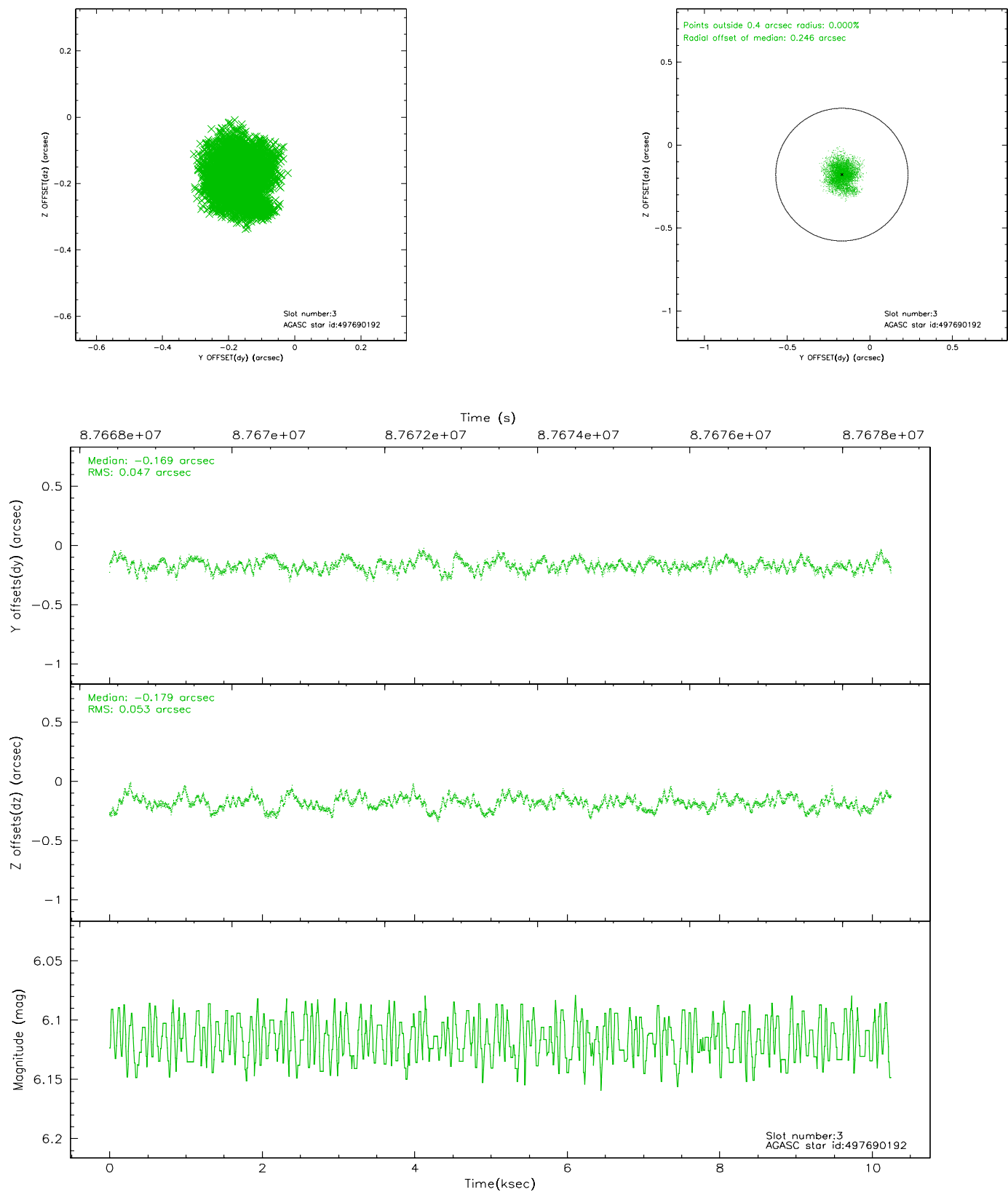
### Slot Statistics

slot	status	id	mag	n_pts	med_dy	med_dz	dr1	dr2	ra	dec	mean_y	mean_z
0	FID	ACIS-S-2	7.11	2500	-0.027	0.025	0.007	0.011	0.000000	0.000000	-754.75	-1727.30
1	FID	ACIS-S-4	7.20	2500	-0.061	0.006	0.005	0.009	0.000000	0.000000	2158.24	180.67
2	FID	ACIS-S-5	7.24	2500	0.057	-0.023	0.006	0.010	0.000000	0.000000	-1806.87	174.85
3	GUIDE	497690192	6.12	5001	-0.169	-0.179	0.076	0.122	128.139362	53.114846	1427.79	87.32
4	GUIDE	497690224	7.84	5000	-0.196	-0.003	0.076	0.124	127.850163	53.122165	1227.53	679.90
5	GUIDE	497694904	9.26	5000	-0.066	-0.097	0.086	0.143	127.234002	52.830882	-226.33	1557.20
6	GUIDE	448532272	10.49	4931	0.246	0.067	0.255	0.423	128.003569	52.087402	-2127.91	-971.77
7	GUIDE	448529208	10.23	4994	0.193	0.205	0.131	0.218	128.453979	51.954933	-2210.23	-2075.01

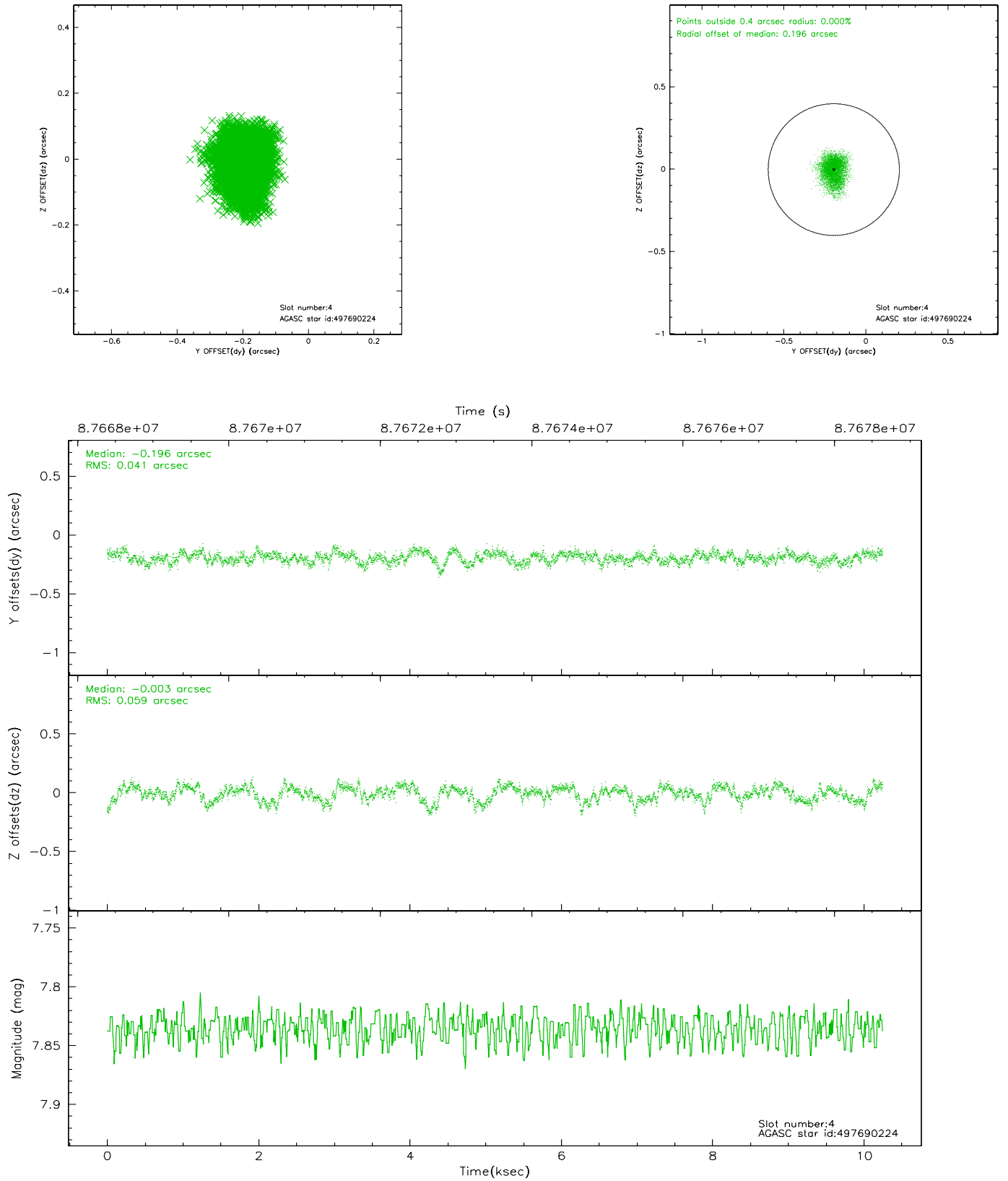


## 2.4 Star Slots

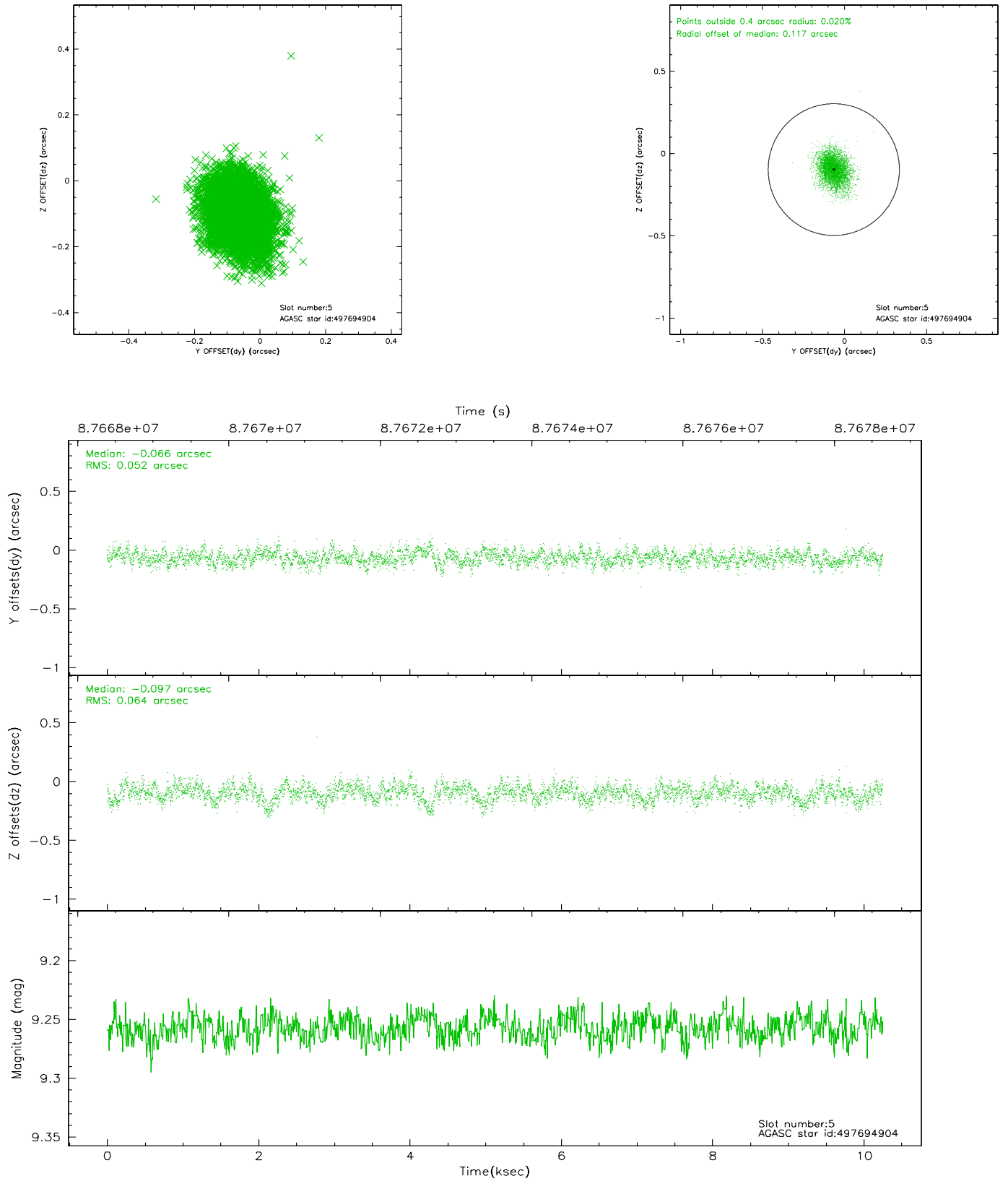
### 2.4.1 Slot 3



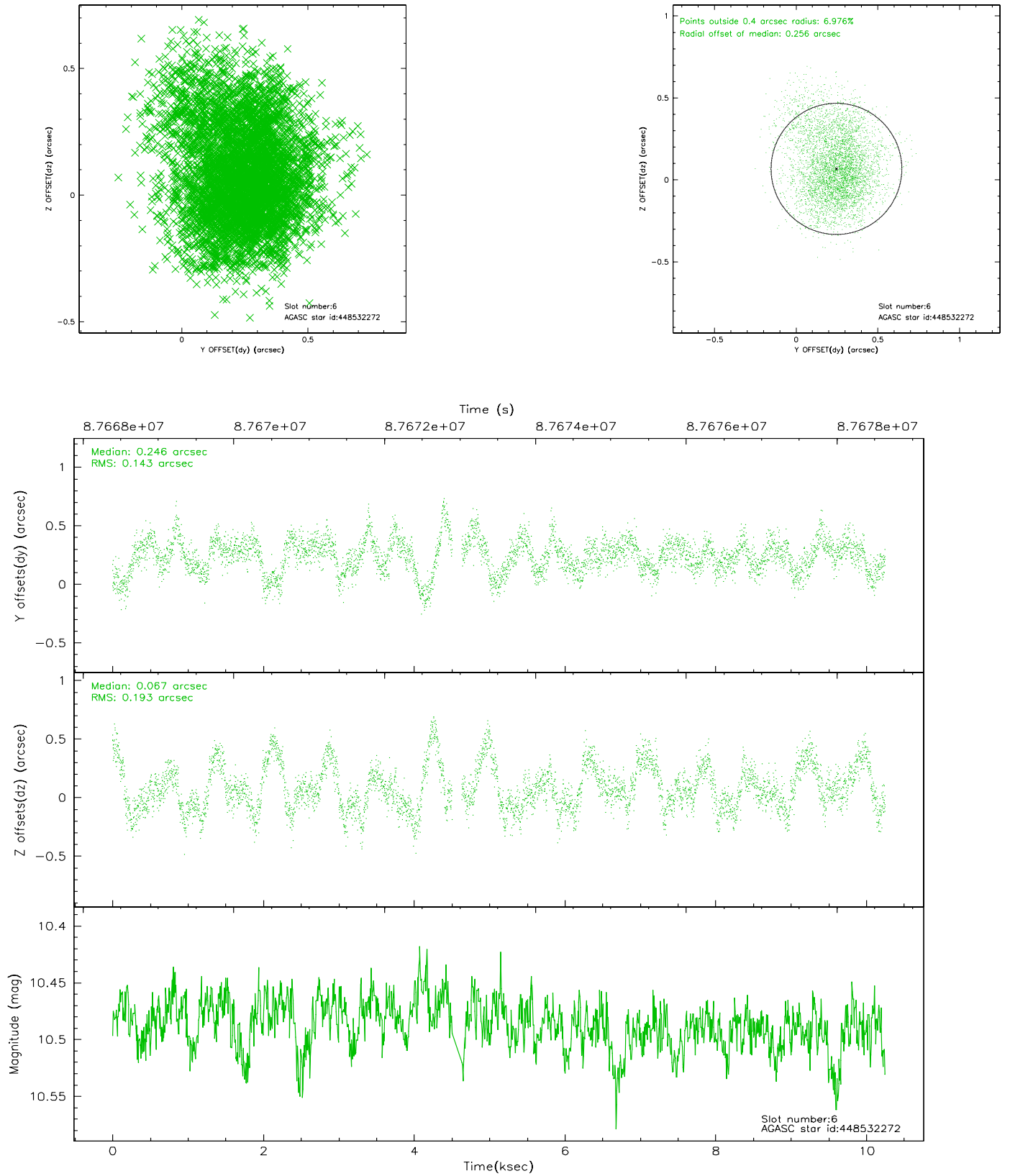
## 2.4.2 Slot 4



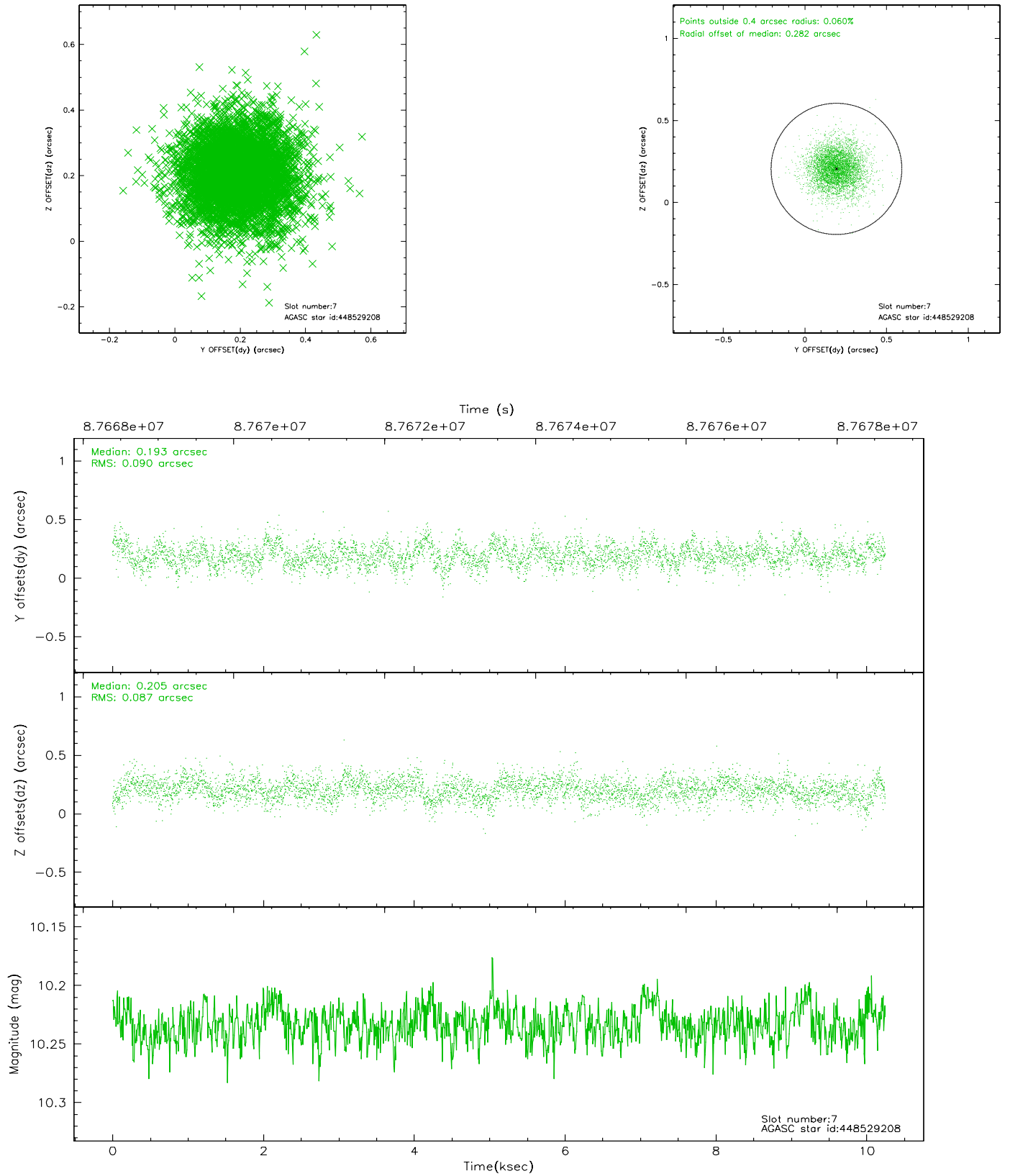
### 2.4.3 Slot 5



## 2.4.4 Slot 6

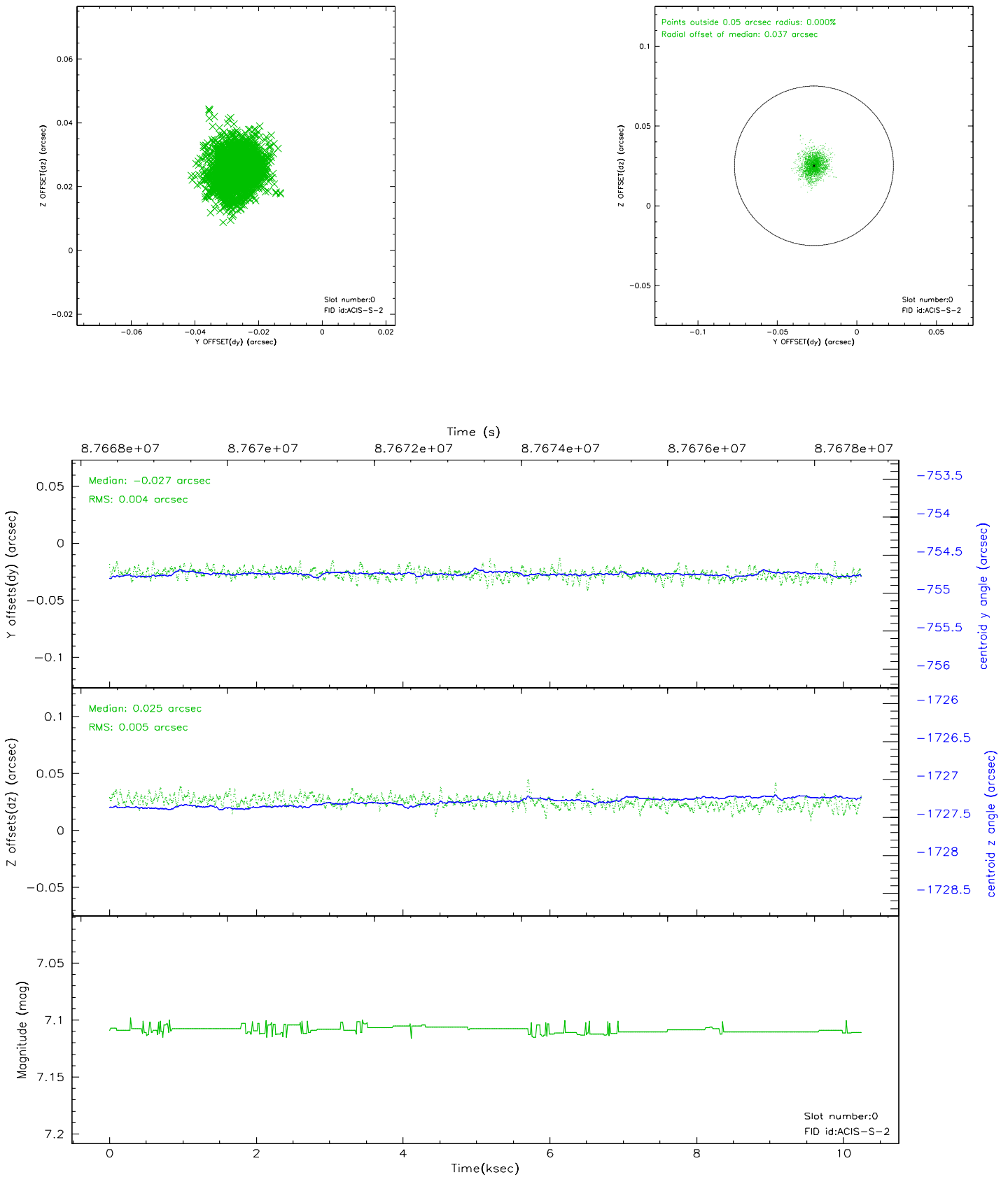


## 2.4.5 Slot 7

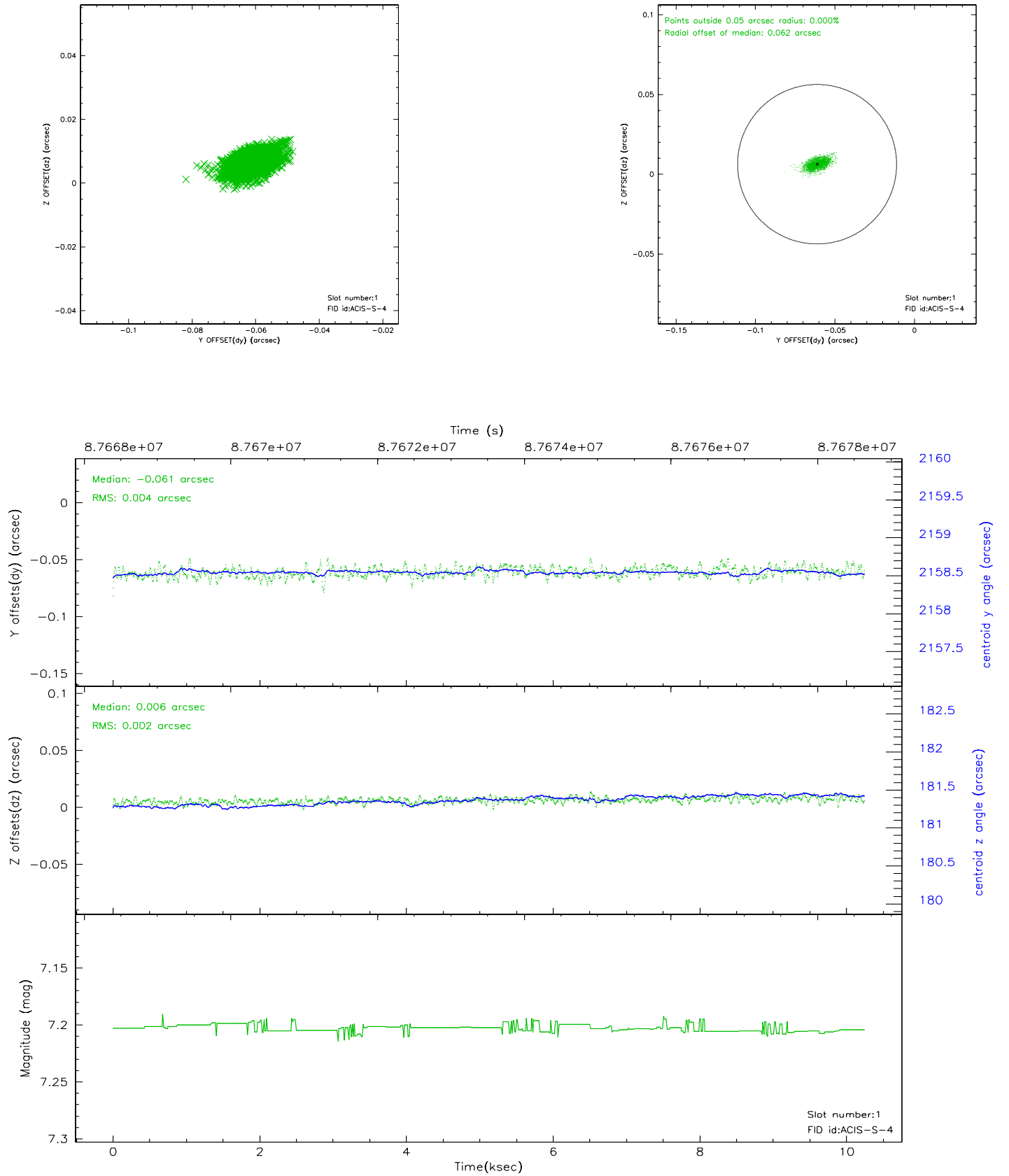


## 2.5 FID Slots

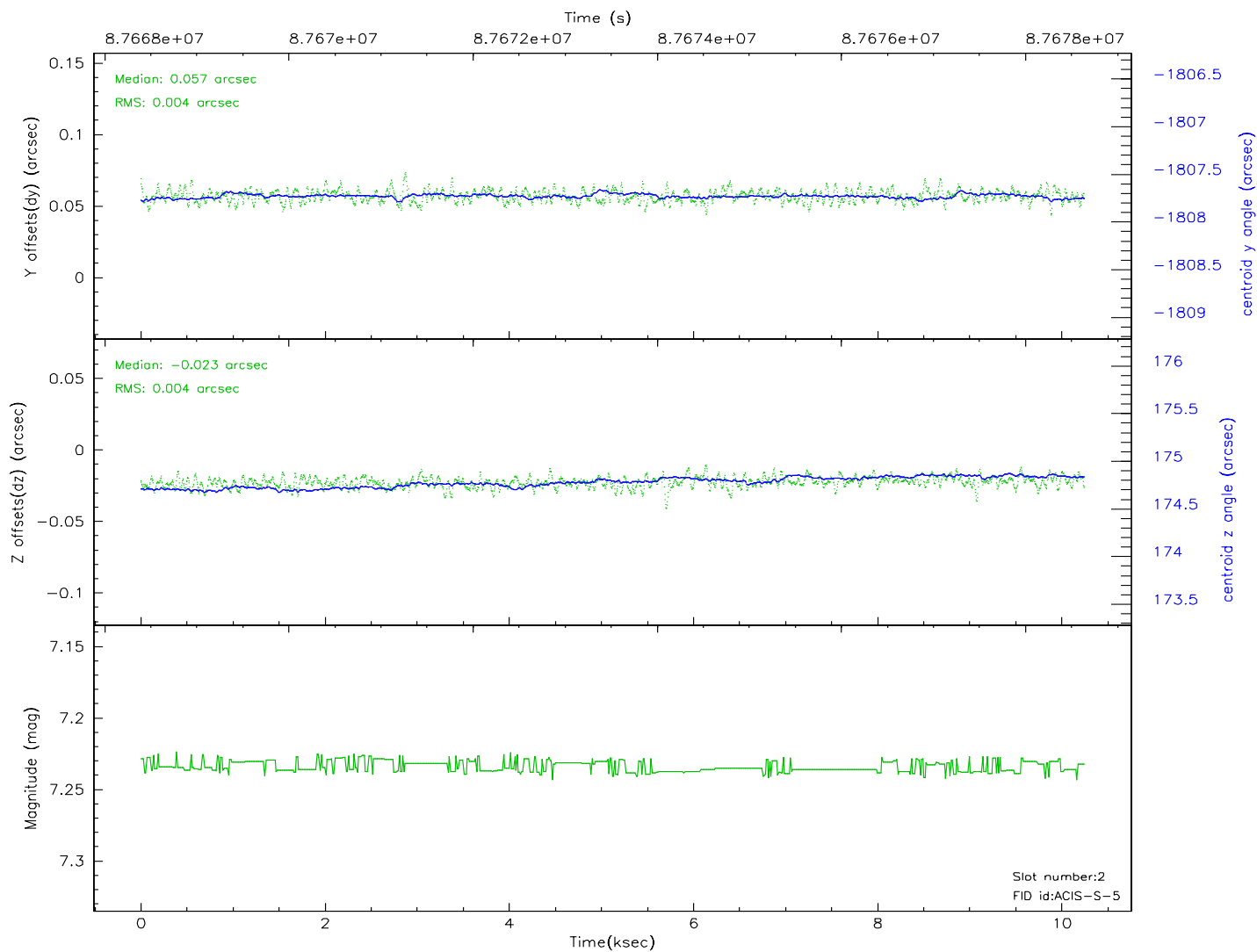
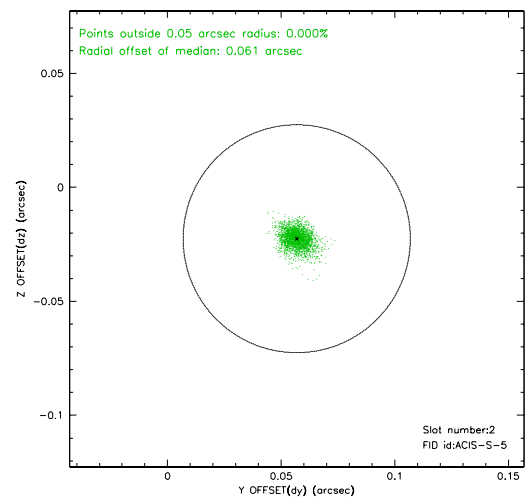
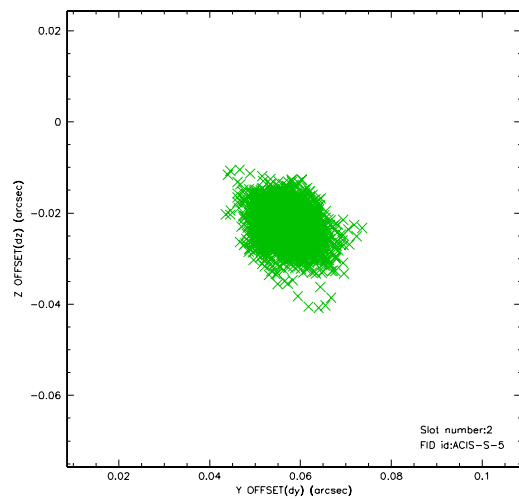
### 2.5.1 Slot 0



## 2.5.2 Slot 1

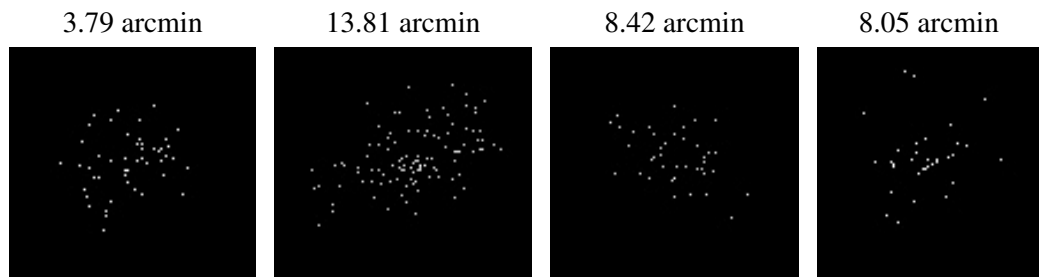


### 2.5.3 Slot 2





### 3 Point Sources



## A Summary

### A.1 Status

V&V Scientist	Jen Lauer
V&V Date (YYYY-MM-DD)	2007.06.12
V&V Edition	1
V&V Disposition and Status	OK
V&V Charge Time	9.254

### A.2 Comments