

V&V Reference Report

L2 ASCDS Version : 10.2.4

Observation 16143 - L2 Version 1
Chandra X-Ray Center

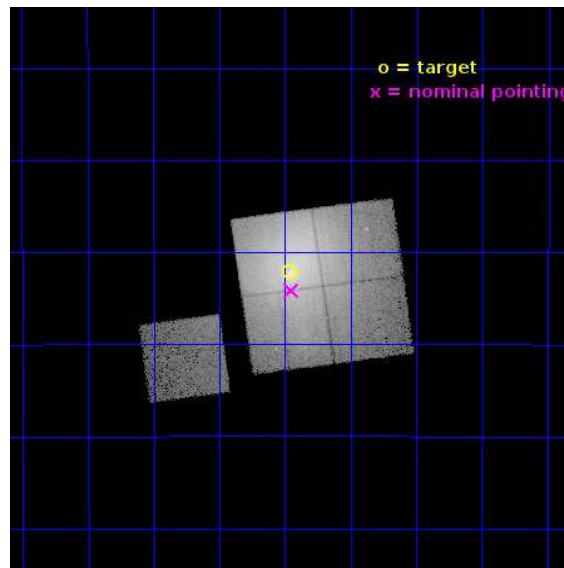
L2 Processing Date : Jul 14 2014

Contents

1	Front	2
2	OBI	3
2.1	OBI	3
2.1.1	Images	3
2.1.2	Bias	3
2.1.3	Parameters	4
2.1.4	Events	4
2.2	Compared Parameters	5
2.3	Aspect	6
2.4	Star Slots	9
2.4.1	Slot 3	9
2.4.2	Slot 4	10
2.4.3	Slot 5	11
2.4.4	Slot 6	12
2.4.5	Slot 7	13
2.5	FID Slots	14
2.5.1	Slot 0	14
2.5.2	Slot 1	15
2.5.3	Slot 2	16
A	Summary	17
A.1	Status	17
A.2	Comments	17

1 Front

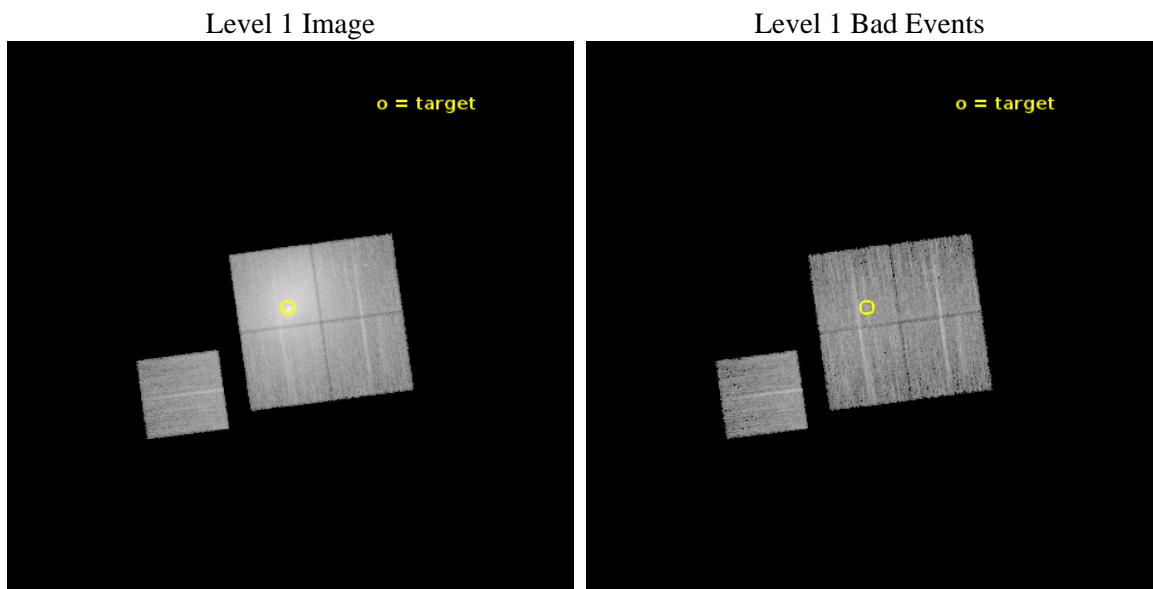
seq_num	801396	Sequence number
obs_id	16143	Observation id
title	A deep study of ram-pressure stripping, metal ridges, and AGN feedback in the Ophiuchus Cluster	Proposal title
observer	Steven Allen	Principal investigator
object	Ophiuchus Cluster	Source name
dtcycle	0	
cycle	P	events from which exps? Prim/Second/Both
ra_targ	258.115417	Observer's specified target RA [deg]
dec_targ	-23.368611	Observer's specified target Dec [deg]
ra_nom	258.1130264594	Nominal RA [deg]
dec_nom	-23.402270661186	Nominal Dec [deg]
roll_nom	262.20774424229	Nominal Roll [deg]
revision	1	Processing version of data
ontime	15083.410205603	Sum of GTIs [s]
livetime	14886.334347021	Livetime [s]
ontime0	15083.287085593	Sum of GTIs [s]
ontime1	15083.328125596	Sum of GTIs [s]
ontime2	15083.369165599	Sum of GTIs [s]
ontime3	15083.410205603	Sum of GTIs [s]
ontime6	15083.246045589	Sum of GTIs [s]
l2events	443415	Number of level 2 events



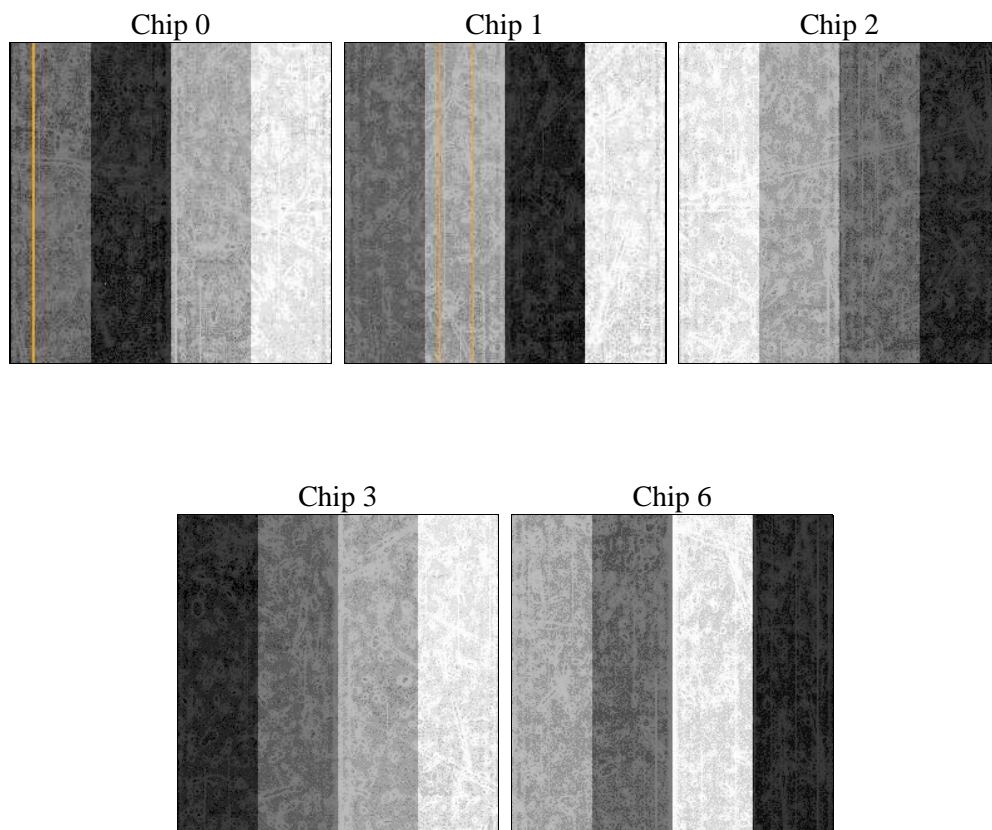
2 OBI

2.1 OBI

2.1.1 Images



2.1.2 Bias



2.1.3 Parameters

obi_num	1	Obi number	sched_exp_time	15000.000000	[s] Scheduled observation exposure time
ascdsver	10.2.4	Processing system revision	ontime	15083.410205603	Sum of GTIs [s]
caldsver	4.6.2	 	ontime0	15083.287085593	Sum of GTIs [s]
date	2014-07-14T11:37:48	Date and time of file creation	ontime1	15083.328125596	Sum of GTIs [s]
revision	1	Processing version of data	ontime2	15083.369165599	Sum of GTIs [s]
			ontime3	15083.410205603	Sum of GTIs [s]
			ontime6	15083.246045589	Sum of GTIs [s]
			l1events	777990	Number of level 1 events

2.1.4 Events

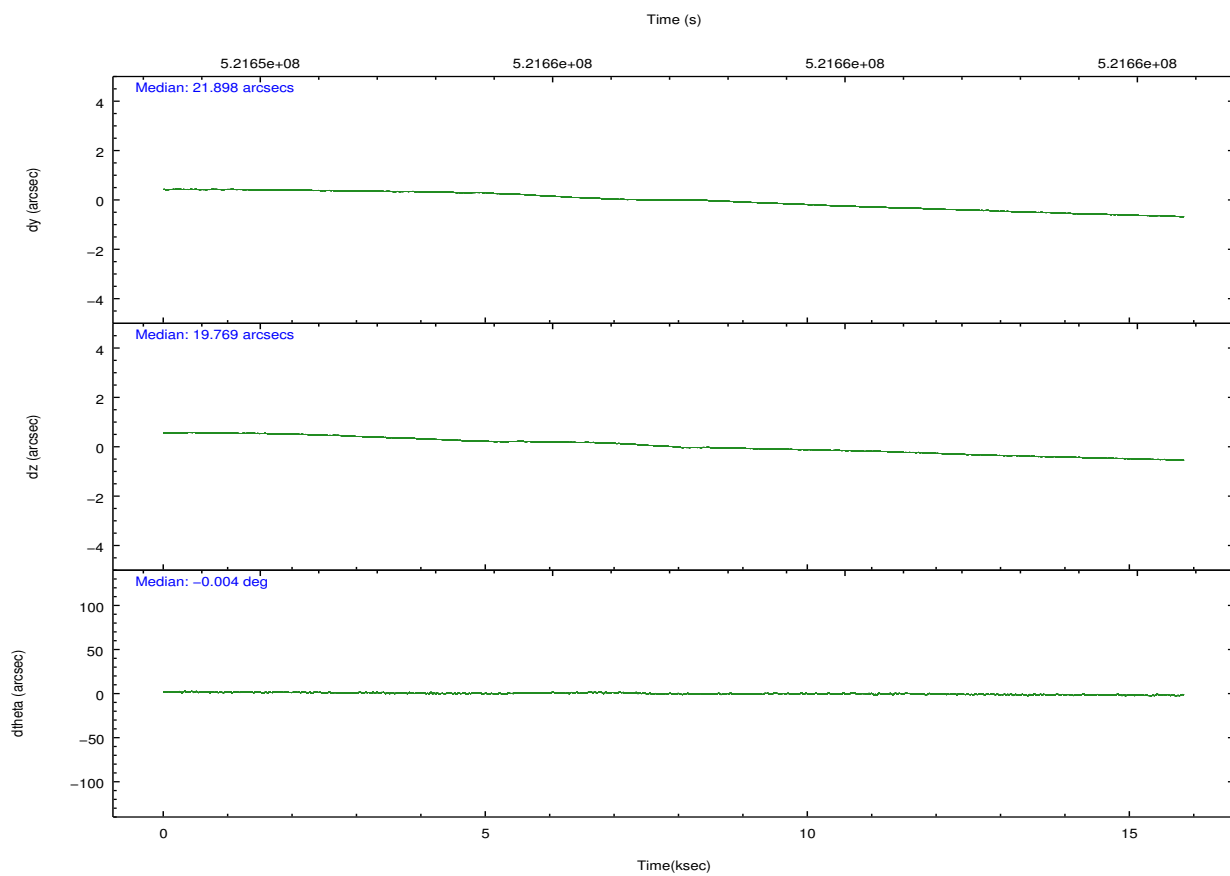
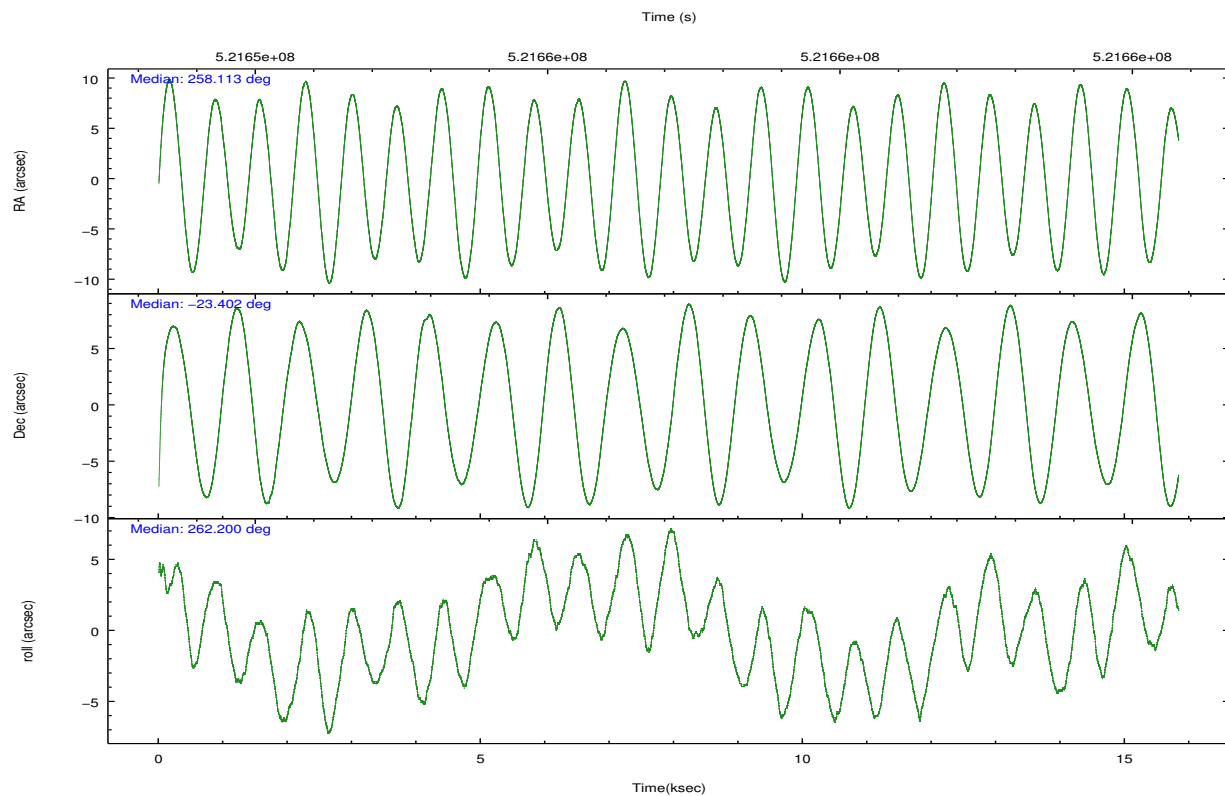
	ccd 0	ccd 1	ccd 2	ccd 3	ccd 6
level 1 events	95346	138638	146851	316841	80314
rejected events	57161	58160	63988	66478	63186
rejected %	59%	41%	43%	20%	78%

	ccd 0	ccd 1	ccd 2	ccd 3	ccd 6
grade 0 events	26199	57940	61300	191834	9676
	27%	41%	41%	60%	12%
grade 1 events	120	237	286	813	54
	0%	0%	0%	0%	0%
grade 2 events	5357	10783	10142	28795	2829
	5%	7%	6%	9%	3%
grade 3 events	1920	3532	3604	9720	1181
	2%	2%	2%	3%	1%
grade 4 events	1898	3436	3511	9734	1121
	1%	2%	2%	3%	1%
grade 5 events	3620	3952	3511	4800	3736
	3%	2%	2%	1%	4%
grade 6 events	2821	4830	4343	10382	2325
	2%	3%	2%	3%	2%
grade 7 events	53411	53928	60154	60763	59392
	56%	38%	40%	19%	73%

2.2 Compared Parameters

Parameter	Planned	Actual	Parameter	Planned	Actual
Instrument	ACIS	ACIS	Obspar format version number	7	7
Detector	ACIS-01236	ACIS-01236	Obspar file type	PREDICTED	ACTUAL
Grating	NONE	NONE	Obspar update status	NONE	UPDATED
Data mode	FAINT	FAINT	CCD I0 on	Y	Y
Observation mode	POINTING	POINTING	CCD I1 on	Y	Y
[deg] Pointing RA	258.101519	258.1130264594001	CCD I2 on	Y	Y
[deg] Pointing Dec	-23.376750	-23.40227066118629	CCD I3 on	Y	Y
[deg] Pointing Roll	261.994485	262.2077442422924	CCD S0 on	N	N
[mm] SIM focus pos	-0.782348	-0.7809083437167272	CCD S1 on	N	N
[mm] SIM defocus	0	0.001439871863259334	CCD S2 on	O1	Y
[mm] SIM translation stage pos	-226.282463	-226.2858628250985	CCD S3 on	N	N
[mm] SIM translation stage offset	-7.31	-7.306590177831225	CCD S4 on	N	N
[s] Observation start time (MET)	521649996.184000	521648143.25399	CCD S5 on	N	N
Observation start date	2014-07-13T14:45:29	2014-07-13T14:15:43	Number of optional ACIS chips dropped	0	0
[s] Observation end time (MET)	521664996.184000	521665807.59246	On-chip summing requested	N	N
Observation end date	2014-07-13T18:55:29	2014-07-13T19:10:07	Subarray requested	NONE	NONE
Read mode	TIMED	TIMED	Alternating exposures requested	N	N
			[s] Primary exposure time	0.000000	3.1

2.3 Aspect

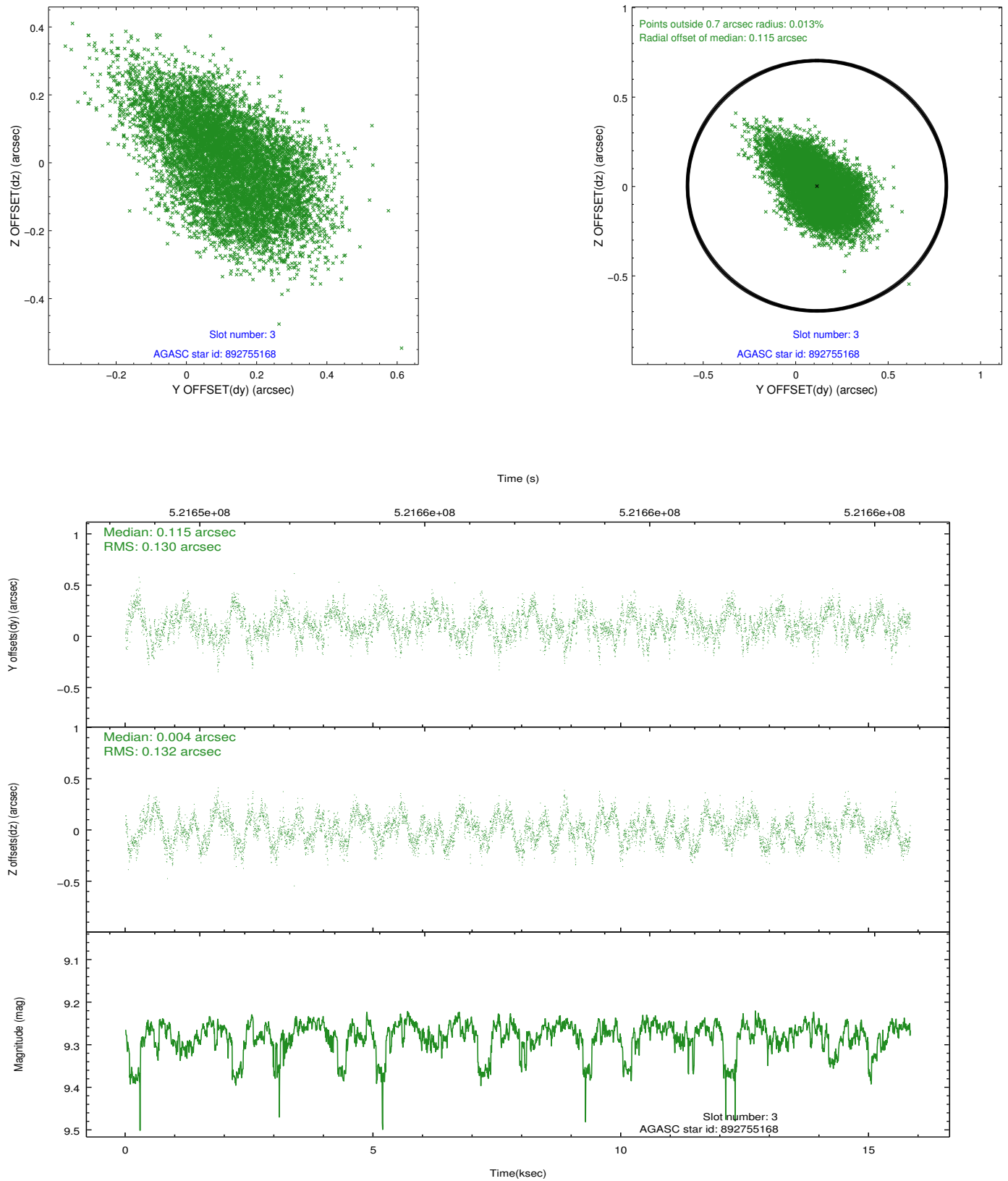


Slot Statistics

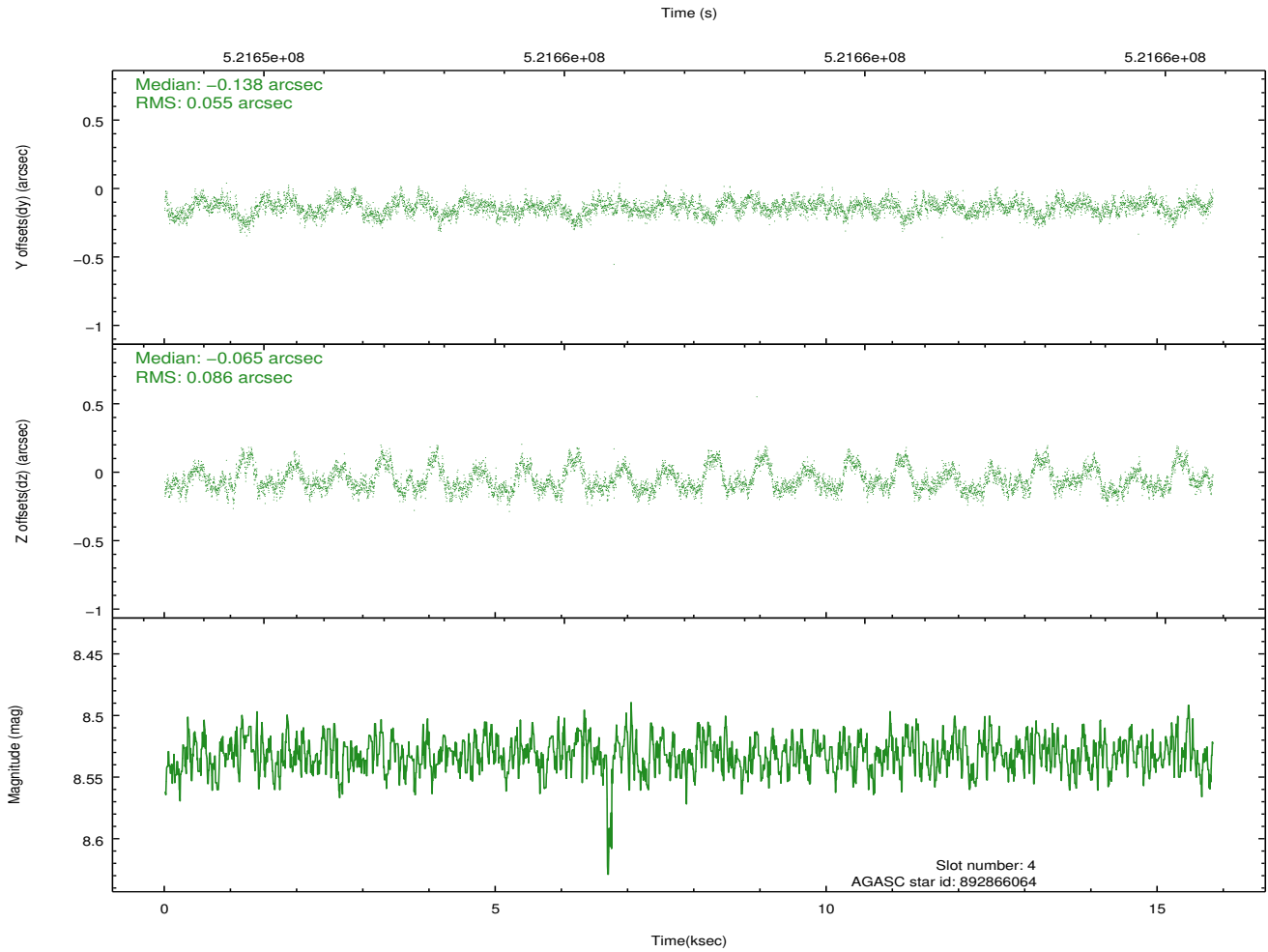
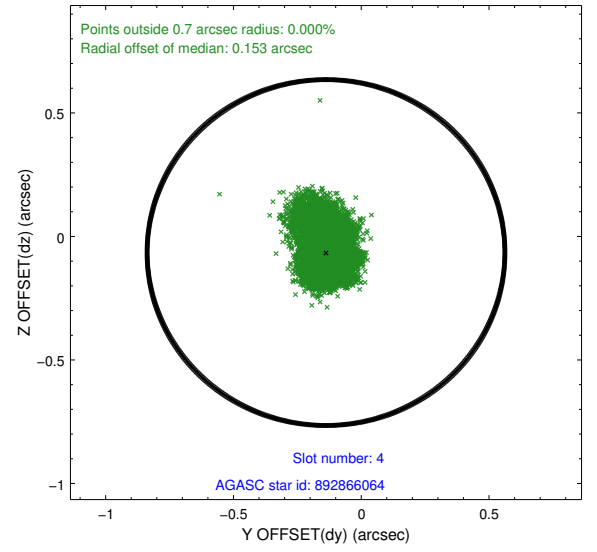
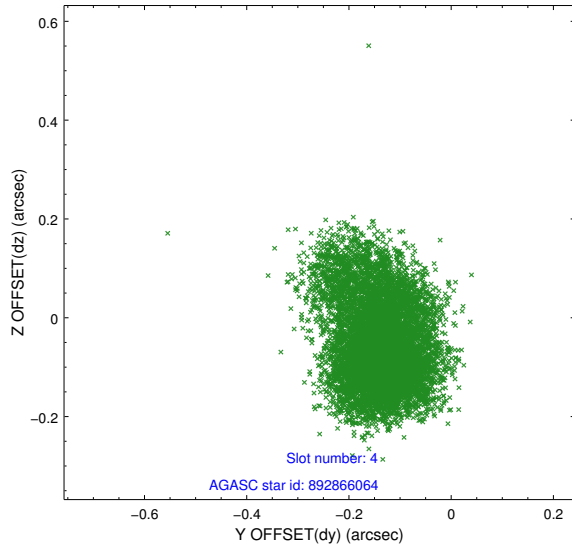
slot	status	id	mag	n_pts	med_dy	med_dz	dr1	dr2	ra	dec	mean_y	mean_z
0	FID	ACIS-I-1	7.08	3862	0.147	-0.103	0.016	0.030	0.000000	0.000000	917.46	-993.58
1	FID	ACIS-I-5	7.07	3862	-0.351	0.104	0.011	0.017	0.000000	0.000000	-1831.07	903.83
2	FID	ACIS-I-6	7.07	3862	0.112	0.067	0.011	0.020	0.000000	0.000000	382.57	1548.70
3	GUIDE	892755168	9.28	7718	0.115	0.004	0.196	0.320	257.345207	-23.908184	2248.77	-2197.52
4	GUIDE	892866064	8.53	7722	-0.138	-0.065	0.105	0.188	258.346240	-23.232516	-625.60	728.81
5	GUIDE	892867312	9.10	7720	0.389	0.041	0.112	0.179	258.441623	-24.052318	2254.69	1446.36
6	GUIDE	892867776	8.48	7721	-0.231	-0.146	0.084	0.136	258.697515	-24.060278	2168.35	2283.57
7	GUIDE	892865624	9.20	7716	-0.131	0.151	0.171	0.253	257.483794	-23.531864	842.28	-1940.30

2.4 Star Slots

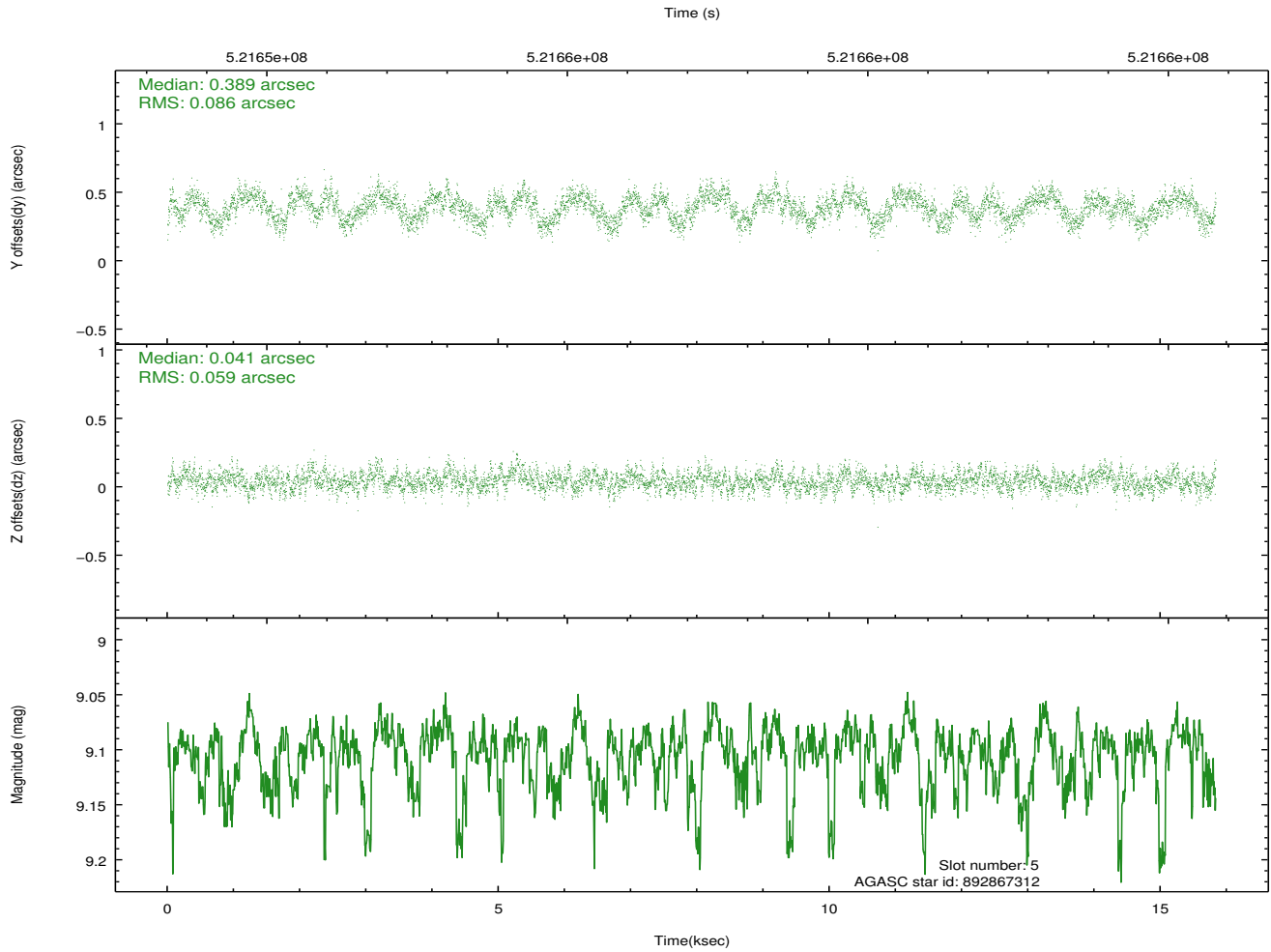
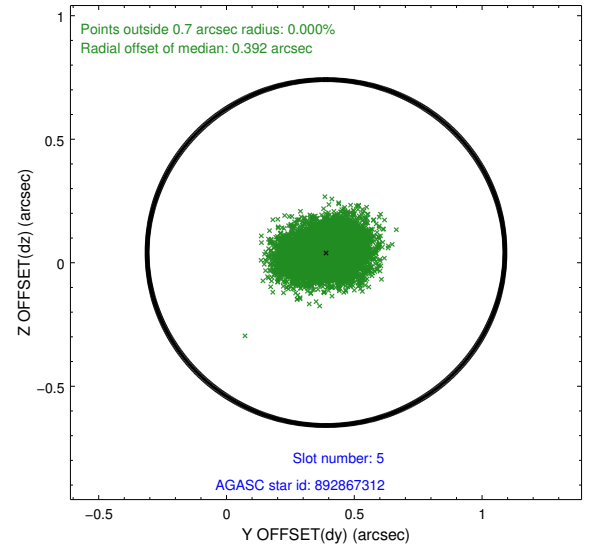
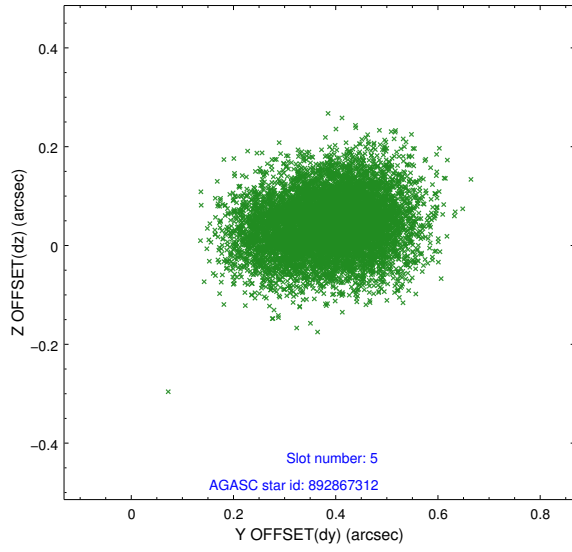
2.4.1 Slot 3



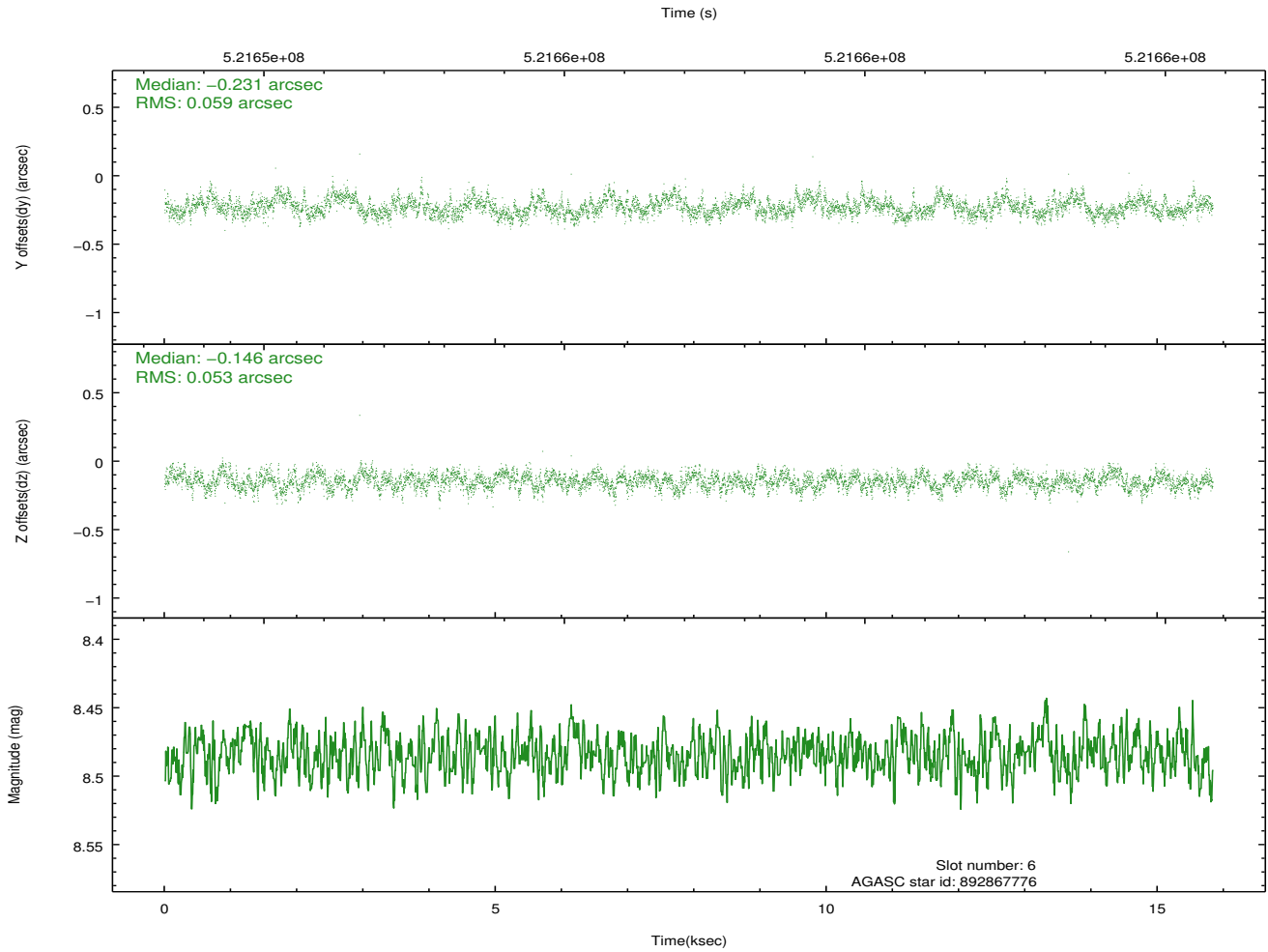
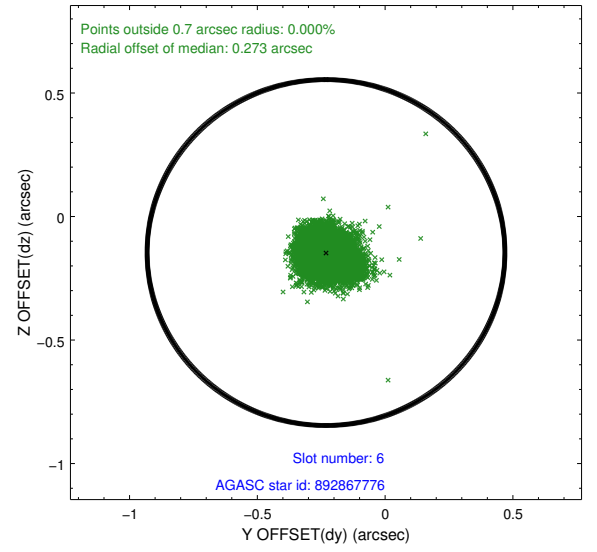
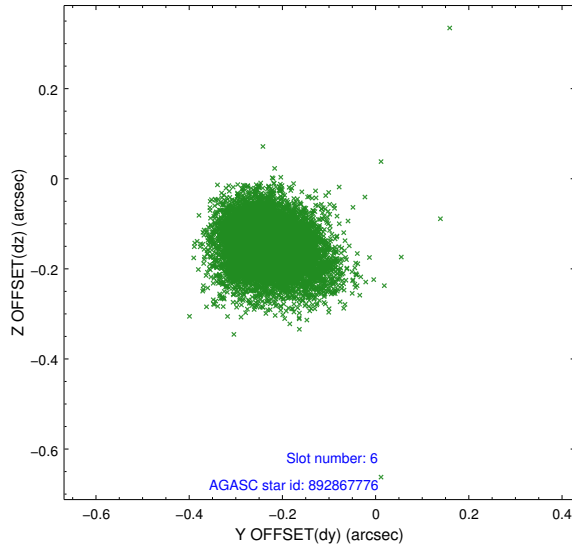
2.4.2 Slot 4



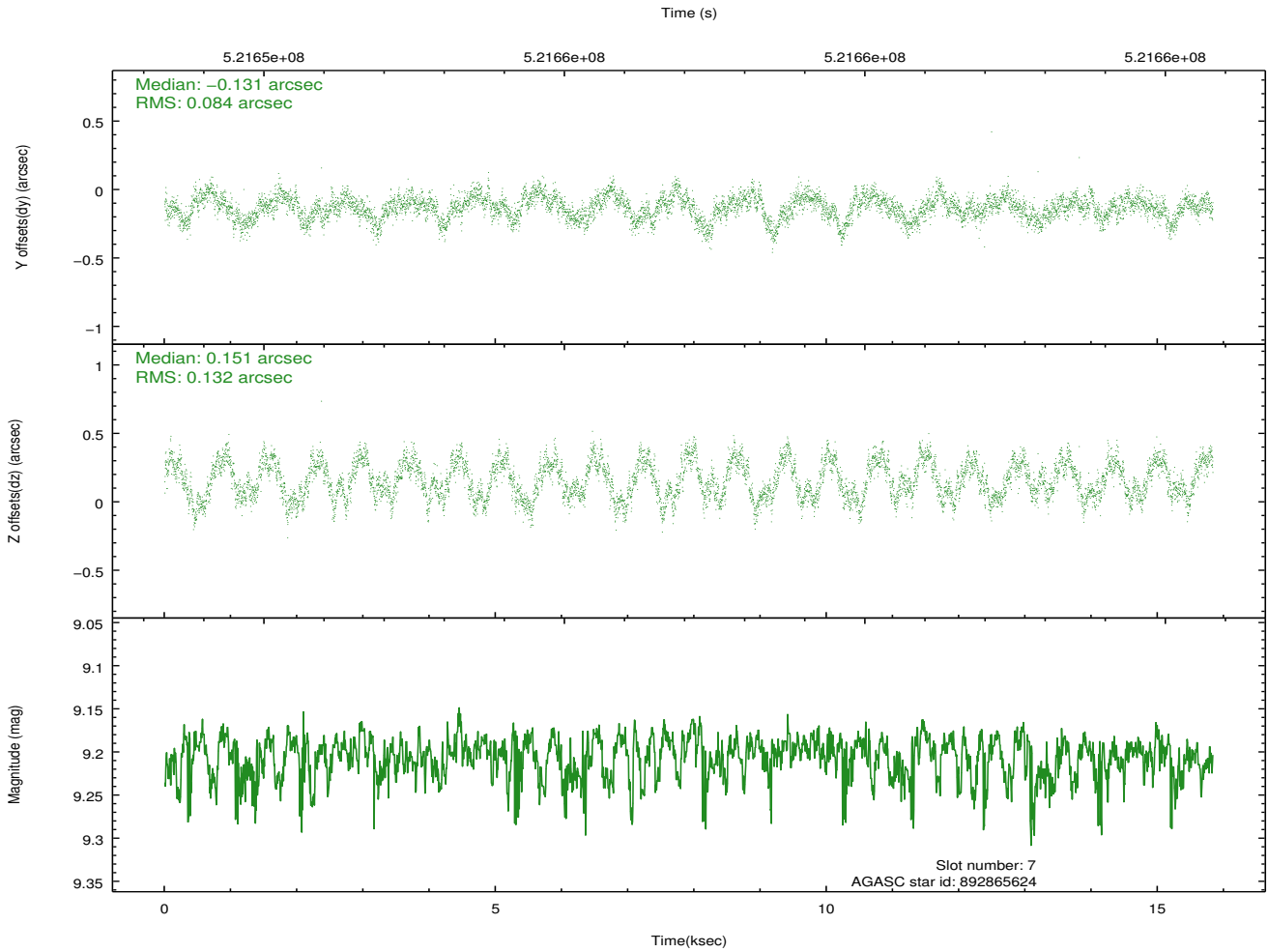
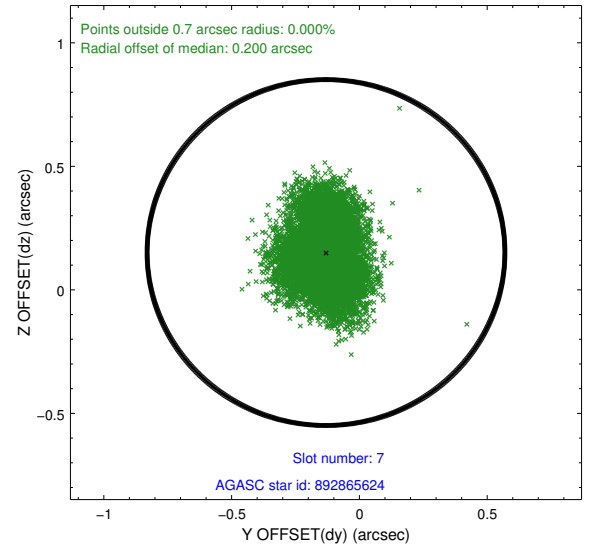
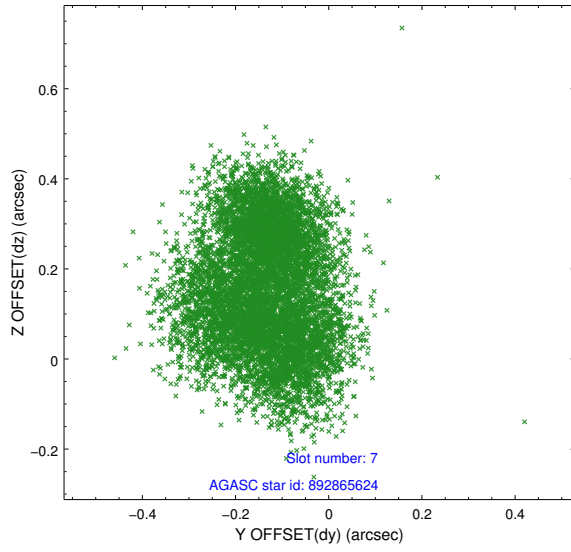
2.4.3 Slot 5



2.4.4 Slot 6

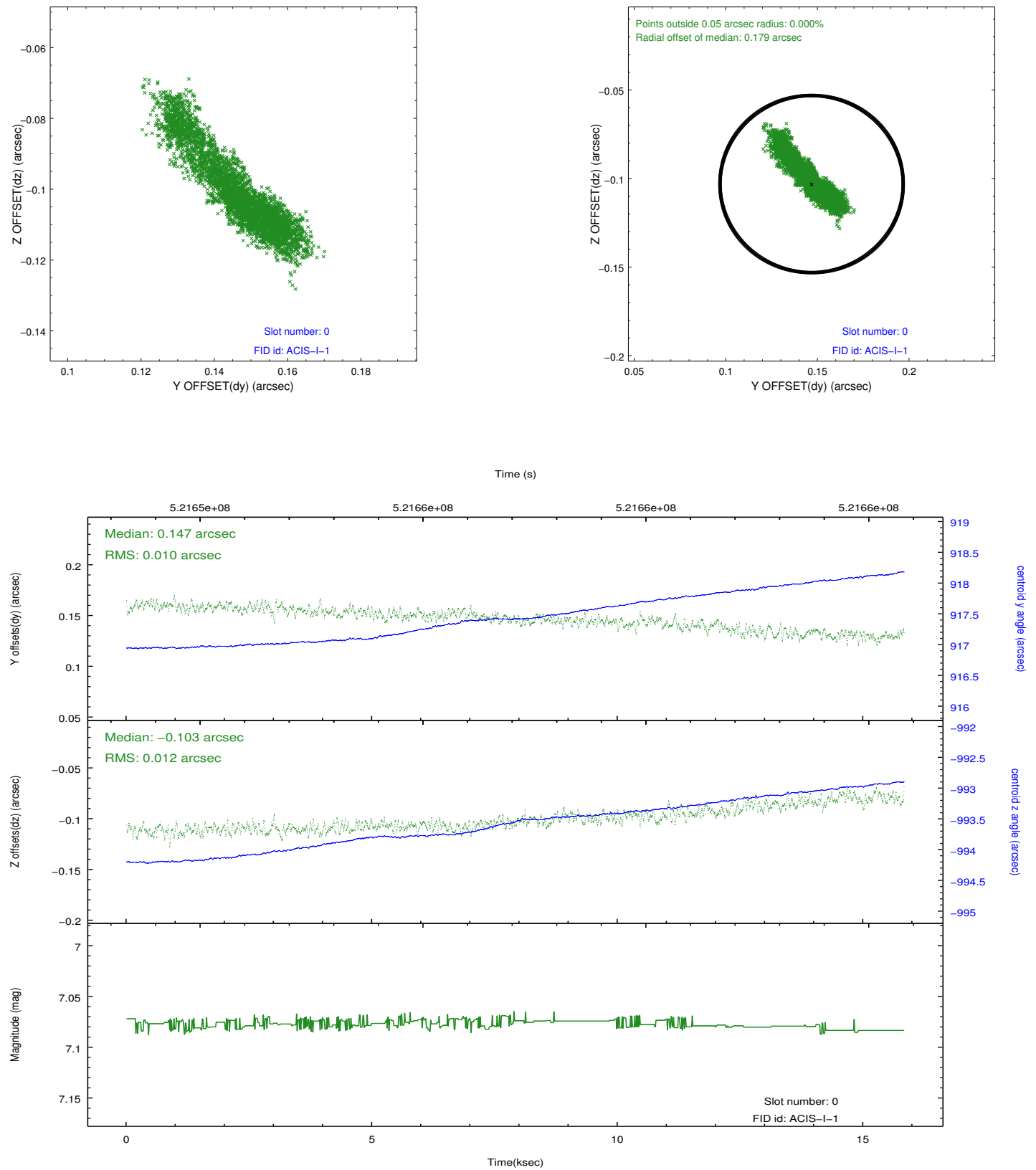


2.4.5 Slot 7

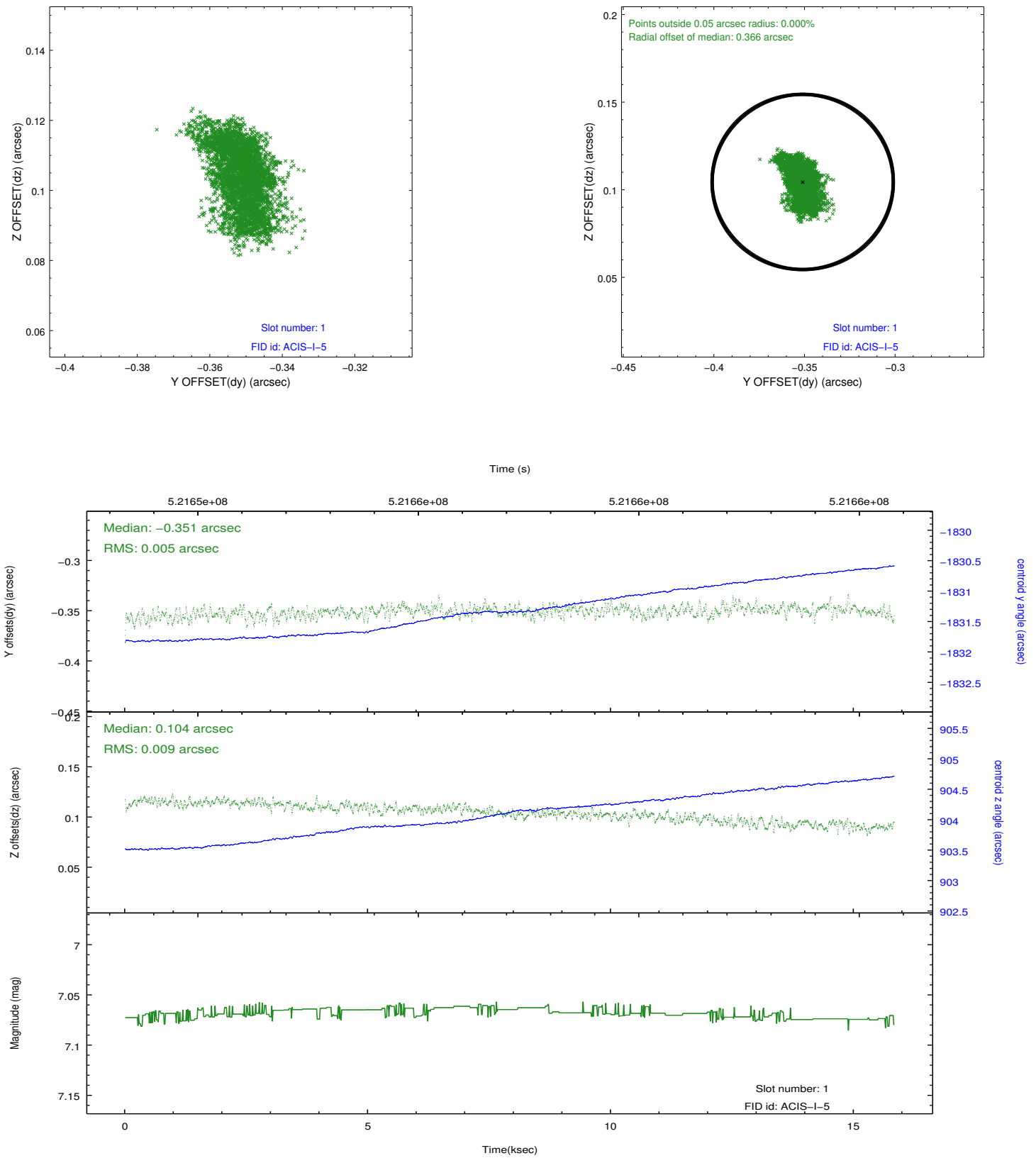


2.5 FID Slots

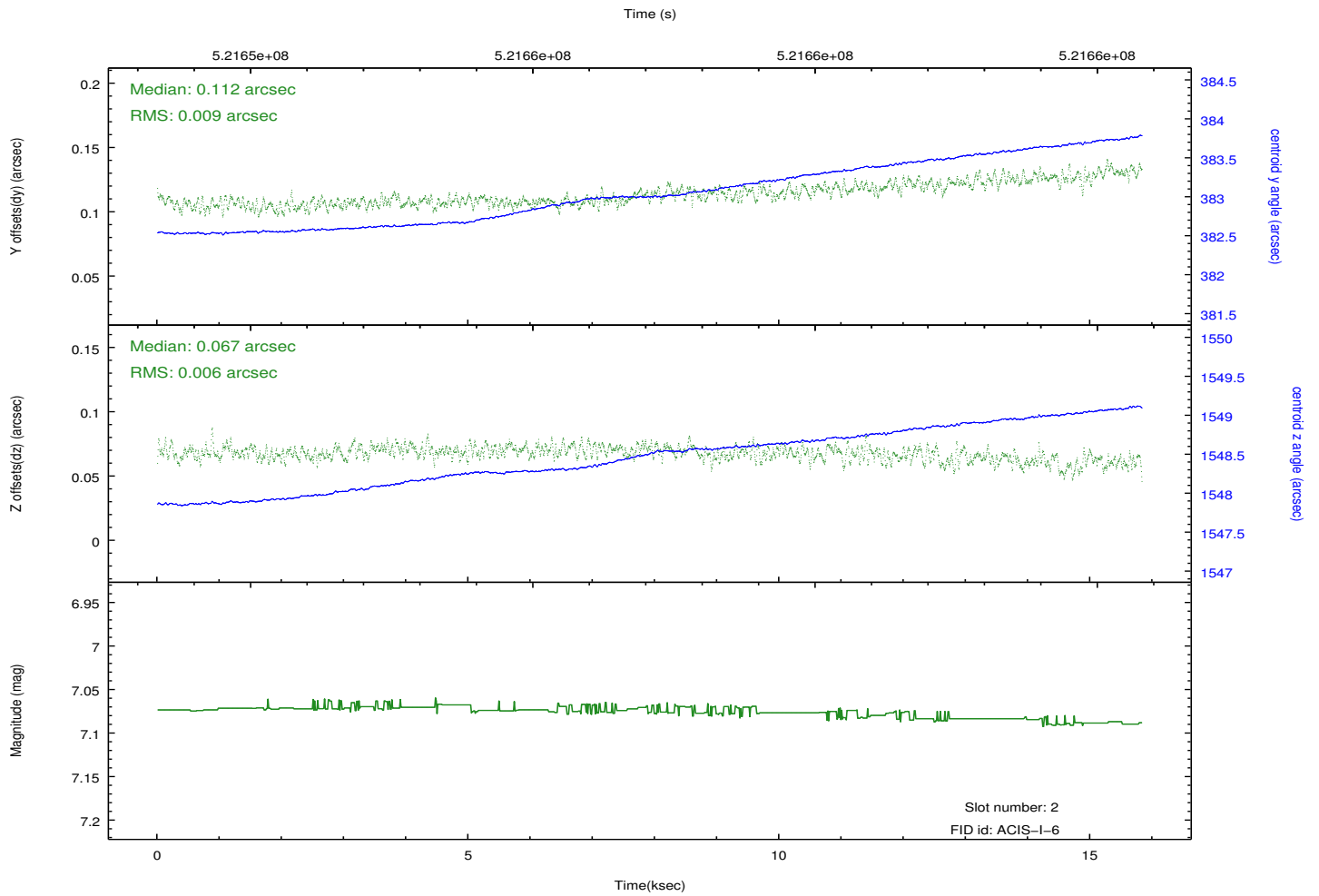
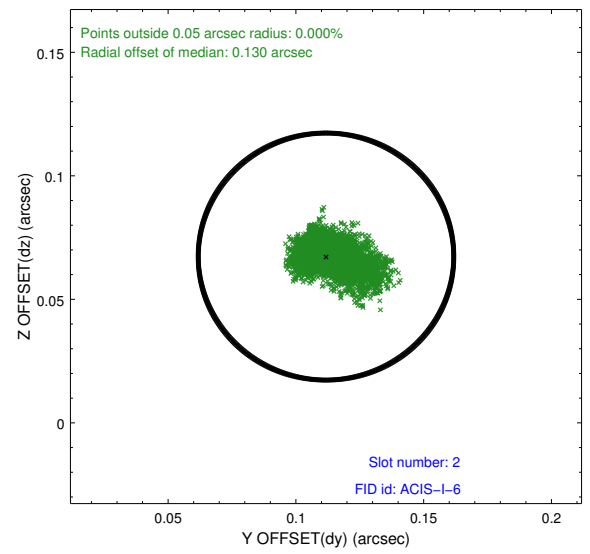
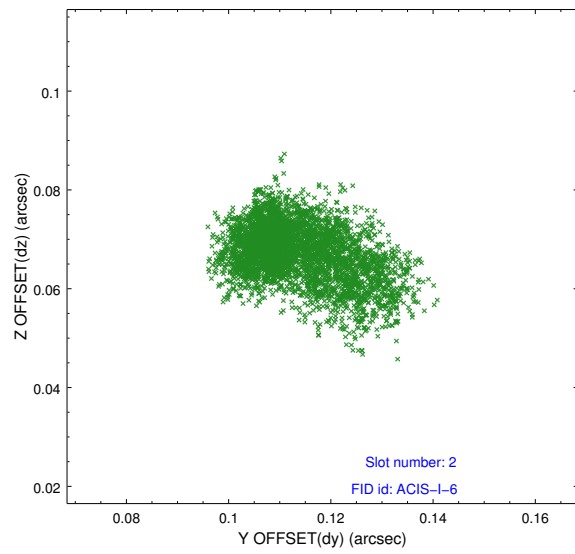
2.5.1 Slot 0



2.5.2 Slot 1



2.5.3 Slot 2



A Summary

A.1 Status

V&V Scientist	Jen Lauer
V&V Date (YYYY-MM-DD)	2014.07.14
V&V Edition	1
V&V Disposition and Status	OK
V&V Charge Time	15.083410205603

A.2 Comments

Joint Proposal: NRAO