

V&V Reference Report

L2 ASCDS Version : 10.2.4

Observation 15993 - L2 Version 1
Chandra X-Ray Center

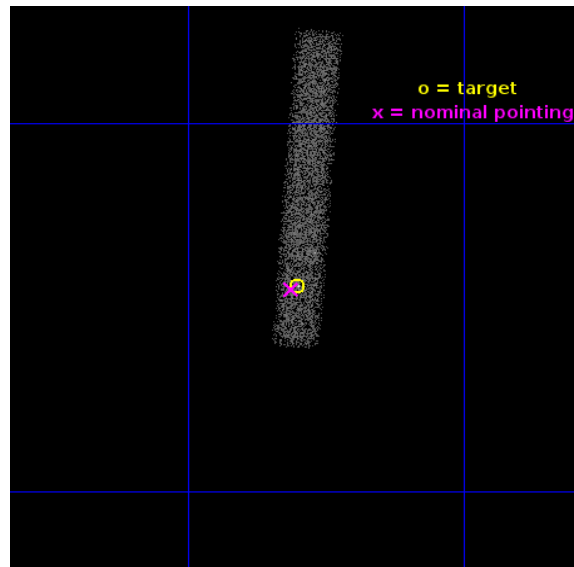
L2 Processing Date : Oct 12 2014

Contents

1	Front	2
2	OBI	3
2.1	OBI	3
2.1.1	Images	3
2.1.2	Bias	3
2.1.3	Parameters	4
2.1.4	Events	4
2.2	Compared Parameters	5
2.3	Aspect	6
2.4	Star Slots	9
2.4.1	Slot 3	9
2.4.2	Slot 4	10
2.4.3	Slot 5	11
2.4.4	Slot 6	12
2.4.5	Slot 7	13
2.5	FID Slots	14
2.5.1	Slot 0	14
2.5.2	Slot 1	15
2.5.3	Slot 2	16
A	Summary	17
A.1	Status	17
A.2	Comments	17

1 Front

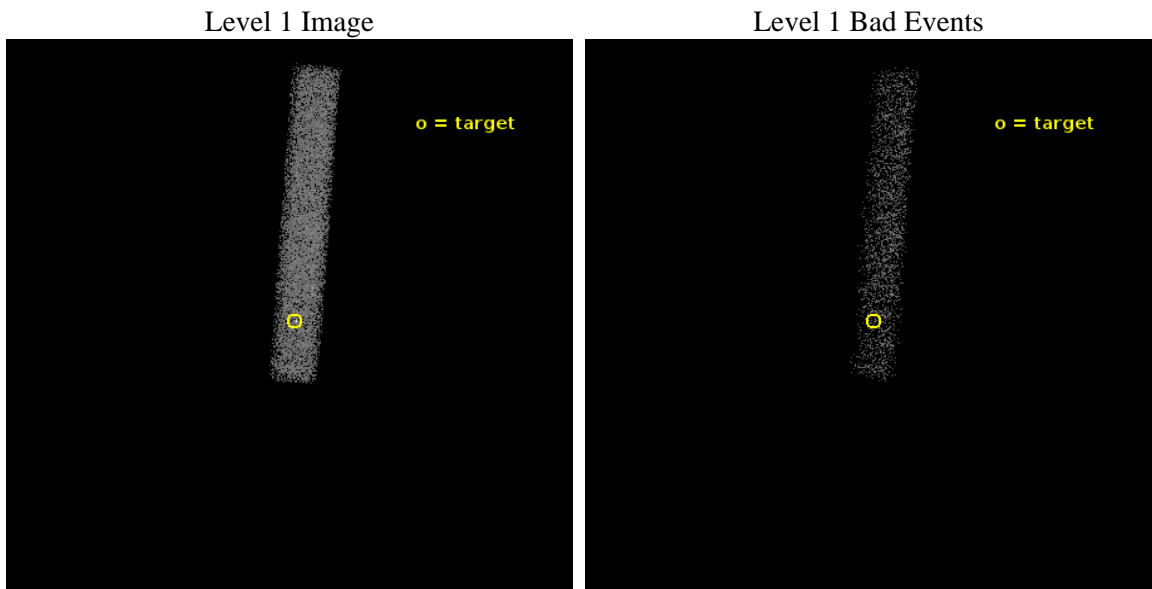
seq_num	502226	Sequence number
obs_id	15993	Observation id
title	What is the Magnetic Field of Magnetar Swift J1822.3-1606?	Proposa
observer	Professor Victoria Kaspi	Principal investigator
object	Swift J1822.3-1606	Source name
dtcycle	0	
cycle	P	events from which exps? Prim/Second/Both
ra_targ	275.575417	Observer's specified target RA [deg]
dec_targ	-16.07375	Observer's specified target Dec [deg]
ra_nom	275.57821300483	Nominal RA [deg]
dec_nom	-16.075261563604	Nominal Dec [deg]
roll_nom	274.09910121159	Nominal Roll [deg]
revision	1	Processing version of data
ontime	20068.798803806	Sum of GTIs [s]
livetime	18201.341196995	Livetime [s]
ontime7	20068.798803806	Sum of GTIs [s]
l2events	9478	Number of level 2 events



2 OBI

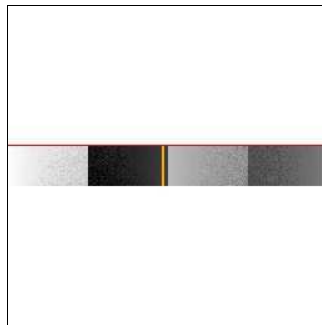
2.1 OBI

2.1.1 Images



2.1.2 Bias

Chip 7



2.1.3 Parameters

obi_num	0	Obi number	sched_exp_time	20000.000000	[s] Scheduled observation exposure time
ascdsver	10.2.4	Processing system revision	ontime	20068.798803806	Sum of GTIs [s]
caldsver	4.6.3	 	ontime7	20068.798803806	Sum of GTIs [s]
date	2014-10-12T18:20:42	Date and time of file creation	l1events	19307	Number of level 1 events
revision	1	Processing version of data			

2.1.4 Events

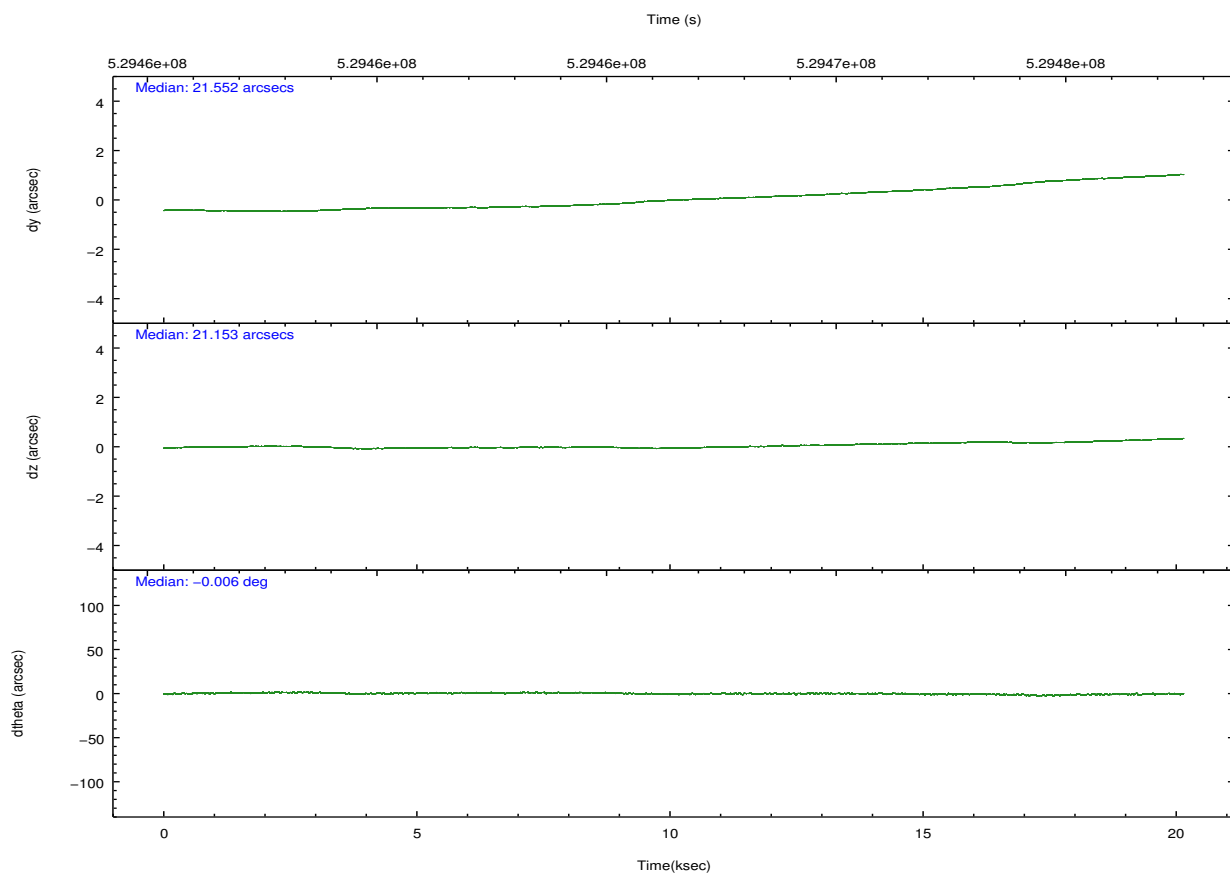
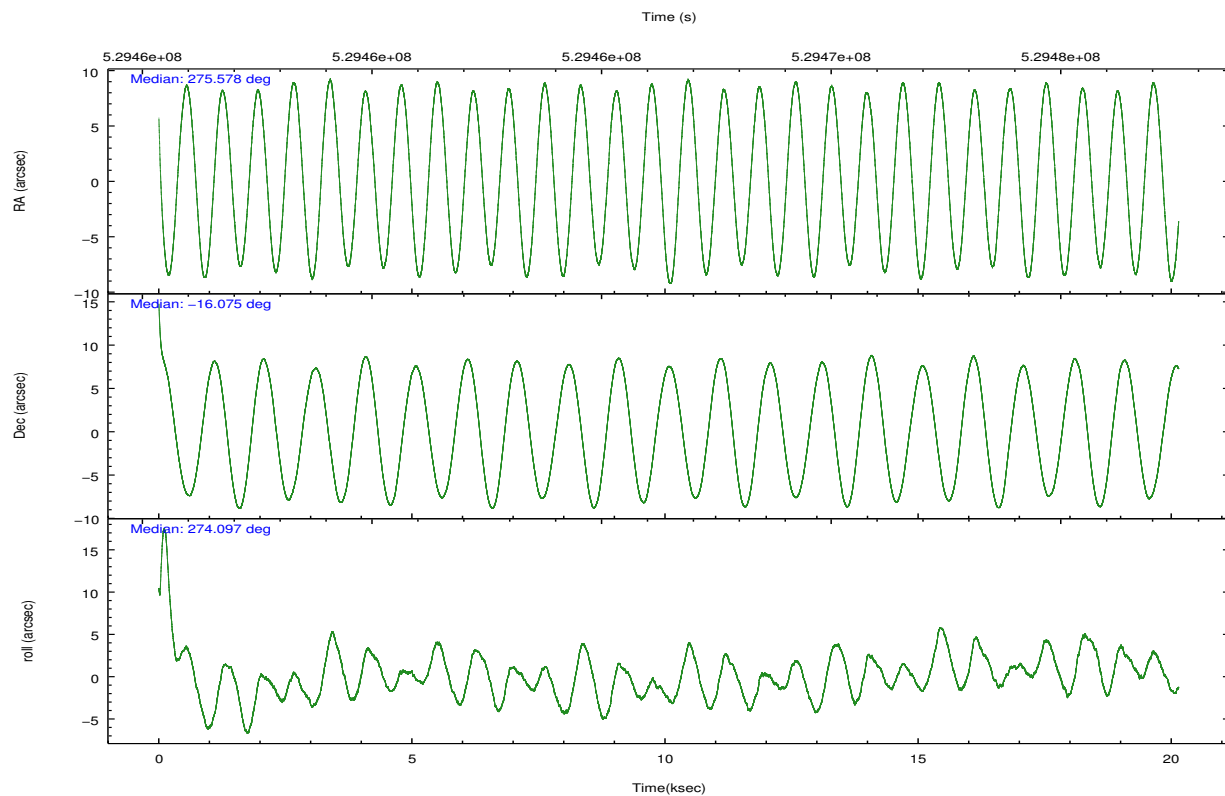
	ccd 7
level 1 events	19307
rejected events	9435
rejected %	48%

	ccd 7
grade 0 events	1191
	6%
grade 1 events	21
	0%
grade 2 events	2057
	10%
grade 3 events	1268
	6%
grade 4 events	1228
	6%
grade 5 events	1961
	10%
grade 6 events	4129
	21%
grade 7 events	7452
	38%

2.2 Compared Parameters

Parameter	Planned	Actual	Parameter	Planned	Actual
Instrument	ACIS	ACIS	Obspar format version number	7	7
Detector	ACIS-7	ACIS-7	Obspar file type	PREDICTED	ACTUAL
Grating	NONE	NONE	Obspar update status	NONE	UPDATED
Data mode	VFAINT	VFAINT	Number of optional ACIS chips dropped	0	0
Observation mode	POINTING	POINTING	On-chip summing requested	N	N
[deg] Pointing RA	275.561920	275.5782130048304	Subarray requested	CUSTOM	1/8
[deg] Pointing Dec	-16.052758	-16.07526156360411	Subarray start row	449	449
[deg] Pointing Roll	273.937975	274.0991012115858	Subarray row count	128	128
[mm] SIM focus pos	-0.684267	-0.6828225247311905	Alternating exposures requested	N	N
[mm] SIM defocus	0	0.001444936568705701	[s] Primary exposure time	0.000000	0.4
[mm] SIM translation stage pos	-190.132523	-190.1400660498719			
[mm] SIM translation stage offset	0	0.00754346686406393			
[s] Observation start time (MET)	529456532.184000	529455320.63714			
Observation start date	2014-10-11T23:14:25	2014-10-11T22:55:20			
[s] Observation end time (MET)	529476532.184000	529477380.17587			
Observation end date	2014-10-12T04:47:45	2014-10-12T05:03:00			
Read mode	TIMED	TIMED			

2.3 Aspect

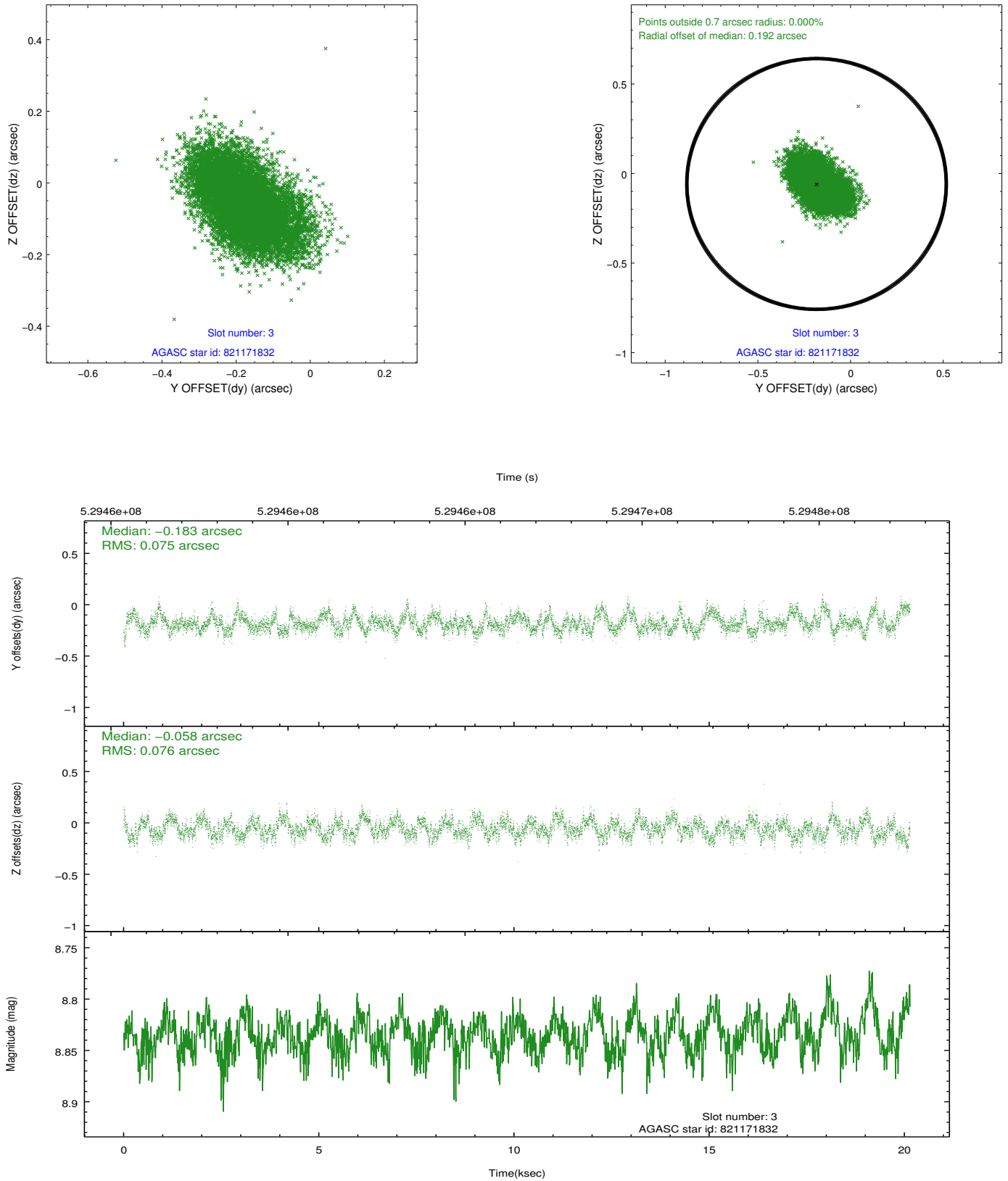


Slot Statistics

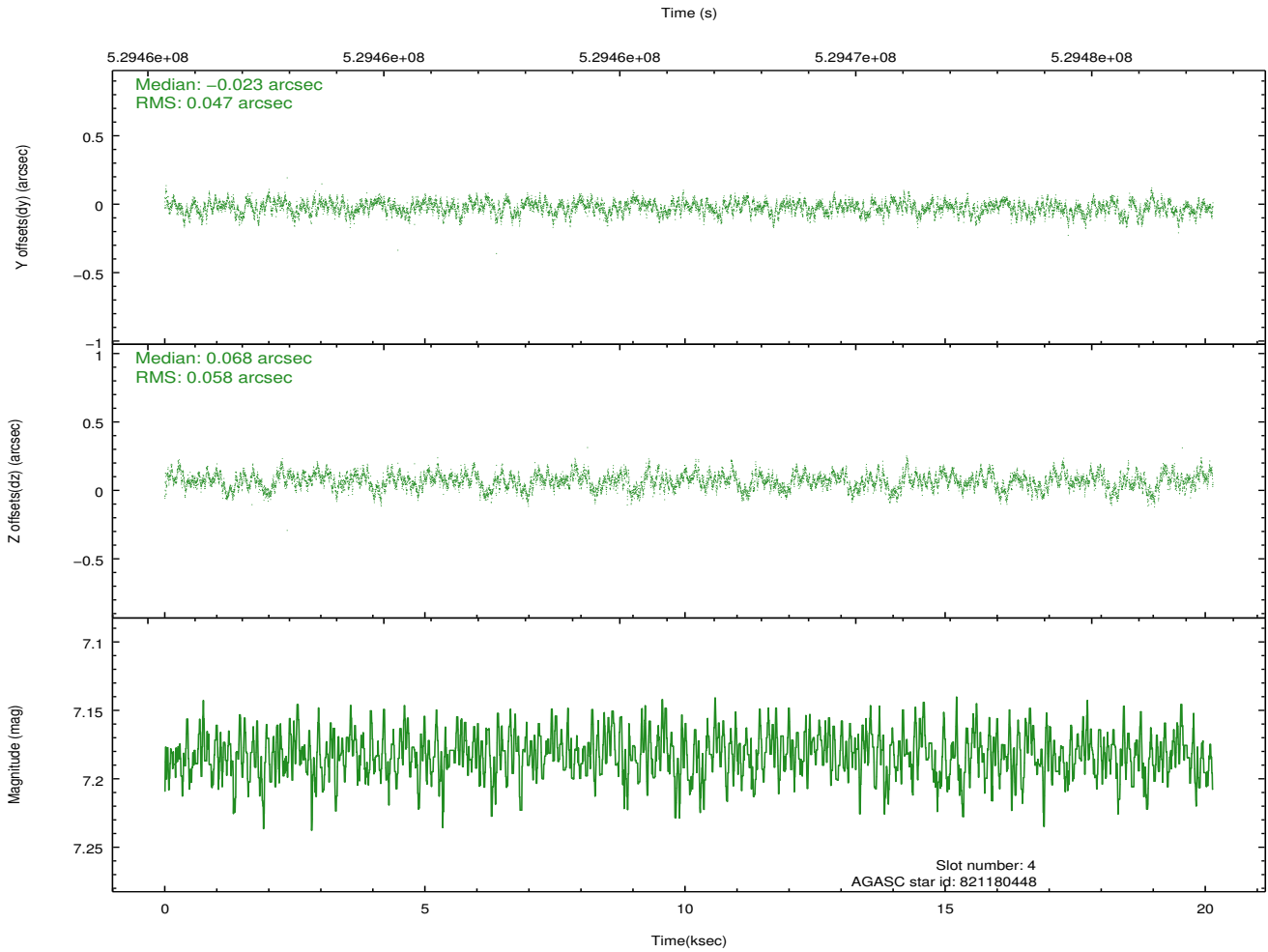
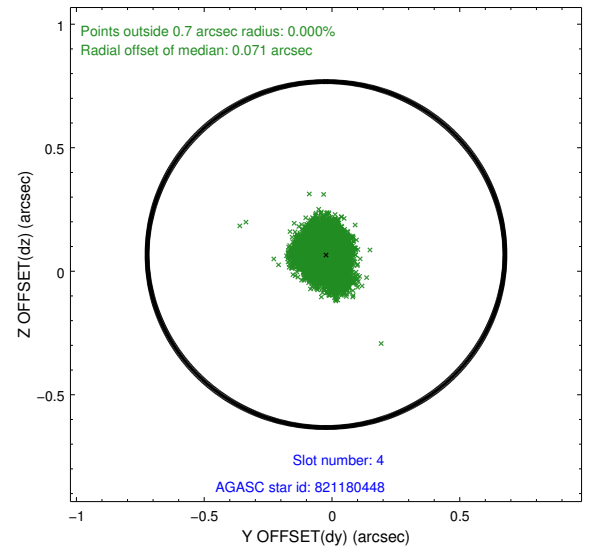
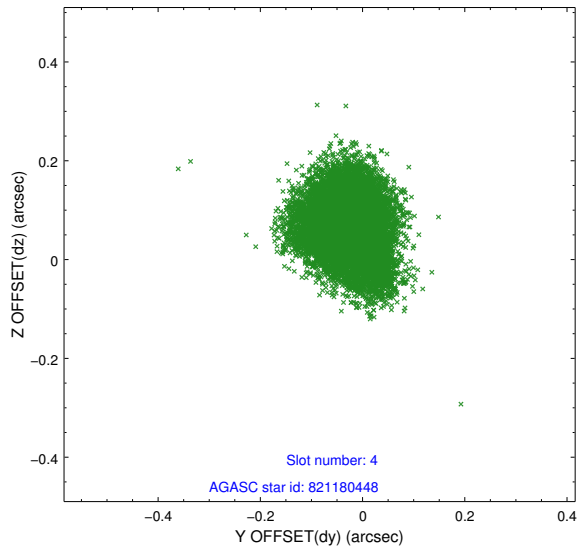
slot	status	id	mag	n_pts	med_dy	med_dz	dr1	dr2	ra	dec	mean_y	mean_z
0	FID	ACIS-S-1	7.00	4914	0.058	-0.057	0.015	0.023	0.000000	0.000000	921.34	-1738.42
1	FID	ACIS-S-5	7.05	4913	-0.115	0.032	0.017	0.041	0.000000	0.000000	-1827.75	159.00
2	FID	ACIS-S-6	7.15	4914	0.038	0.038	0.010	0.022	0.000000	0.000000	386.65	803.20
3	GUIDE	821171832	8.83	9822	-0.183	-0.058	0.115	0.187	275.792275	-15.610164	-1534.10	906.36
4	GUIDE	821180448	7.18	9828	-0.023	0.068	0.080	0.126	275.453560	-16.324585	950.91	-440.23
5	GUIDE	821183768	9.22	9820	0.146	-0.116	0.110	0.177	275.638665	-16.595886	1969.52	130.06
6	GUIDE	821179256	7.39	9828	0.013	0.084	0.074	0.115	274.840900	-15.612800	-1746.85	-2385.31
7	GUIDE	821181752	7.60	9827	0.048	0.023	0.067	0.107	275.331456	-16.373905	1099.50	-873.49

2.4 Star Slots

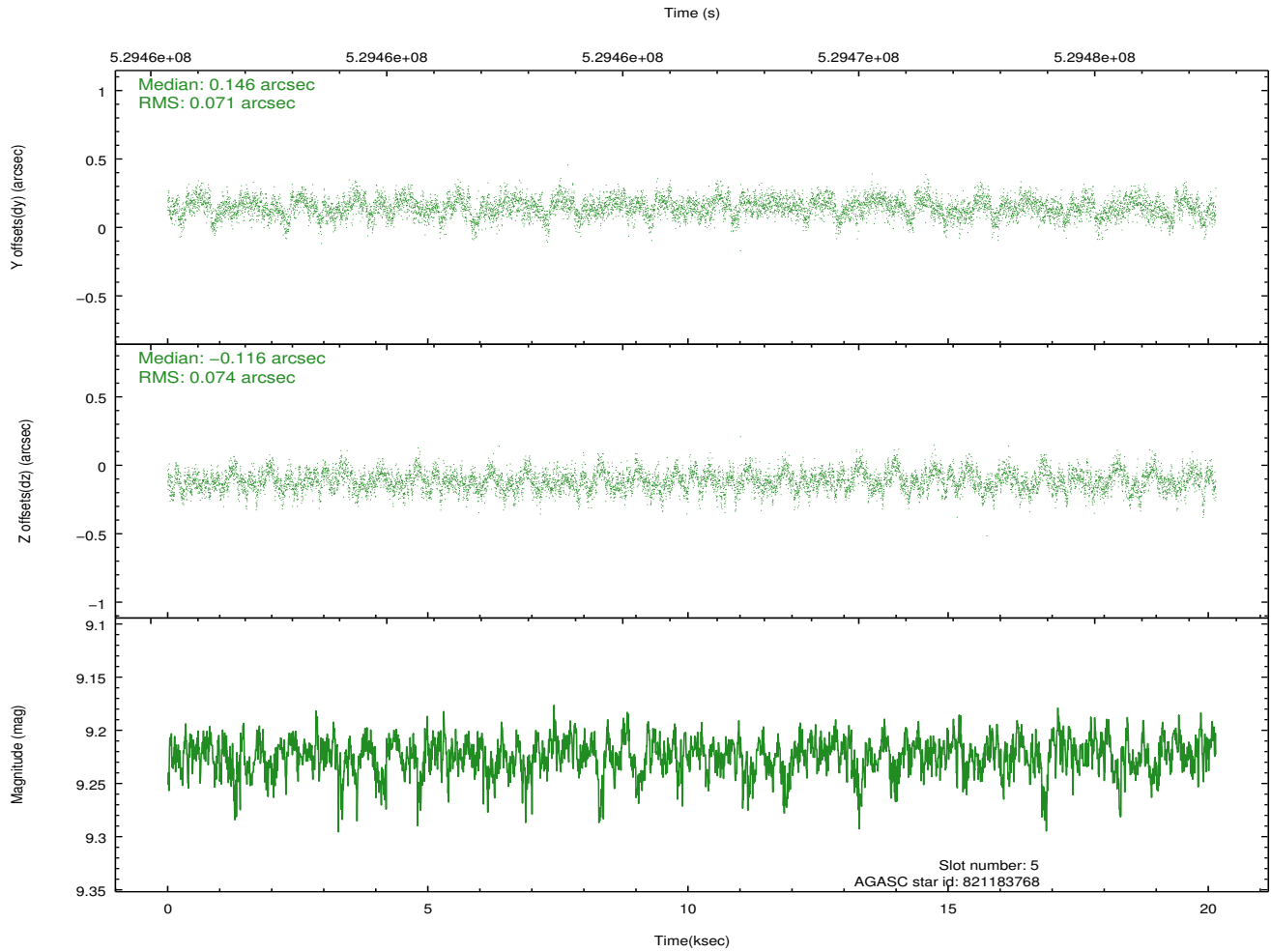
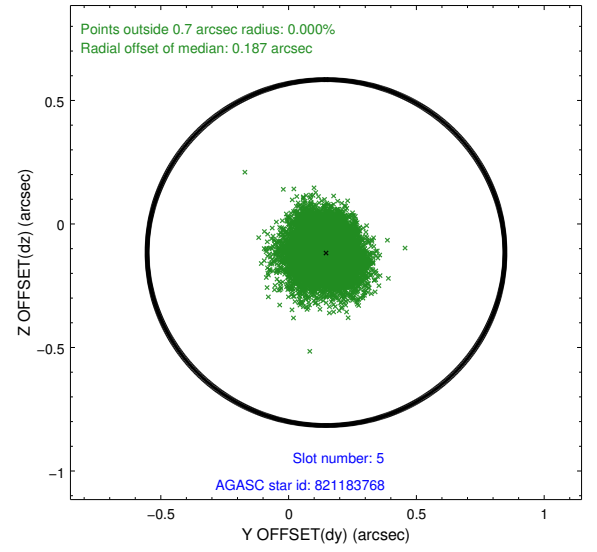
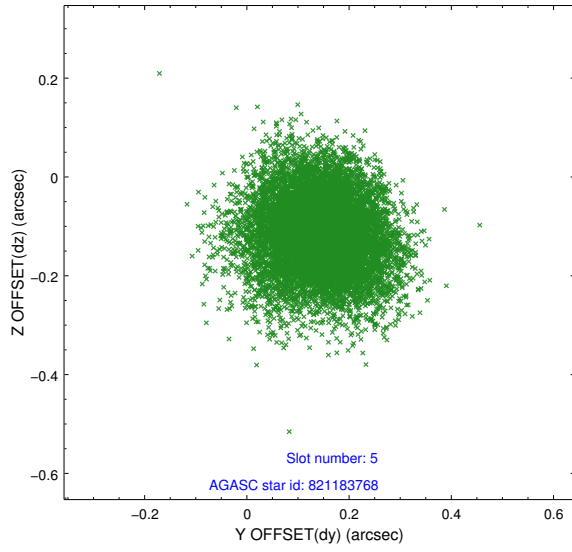
2.4.1 Slot 3



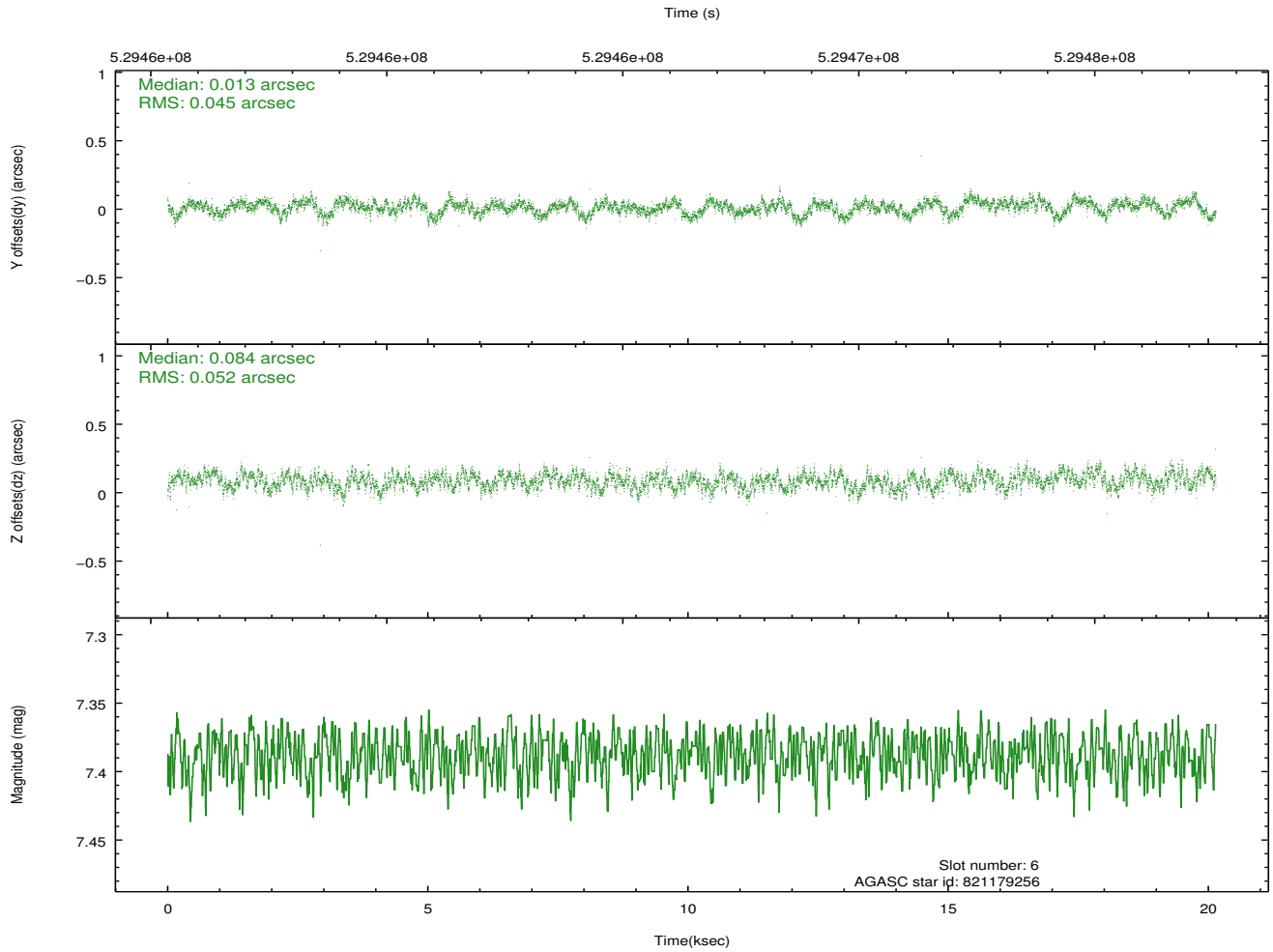
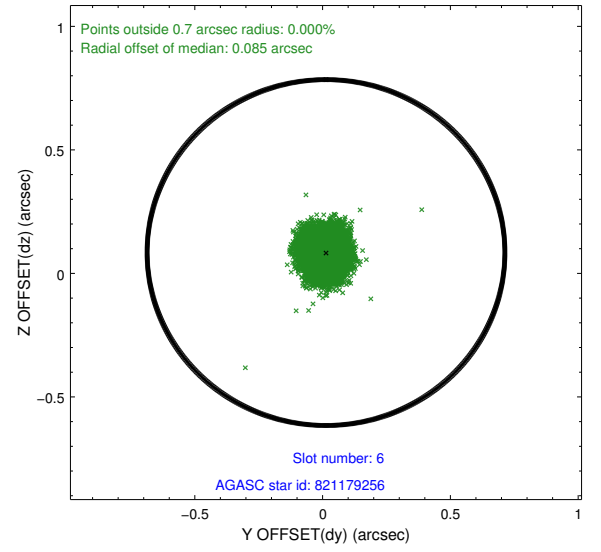
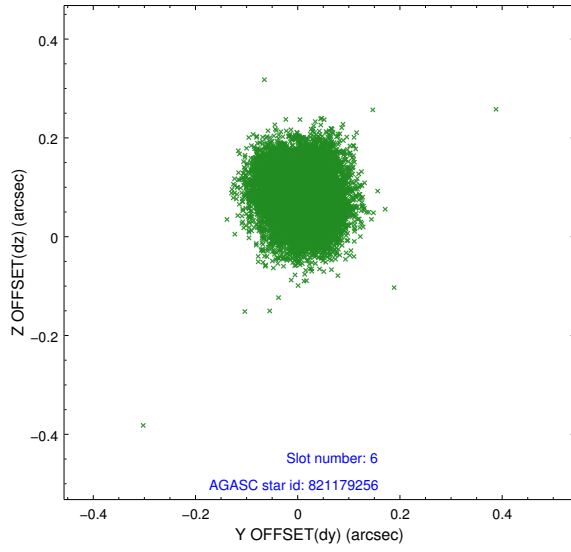
2.4.2 Slot 4



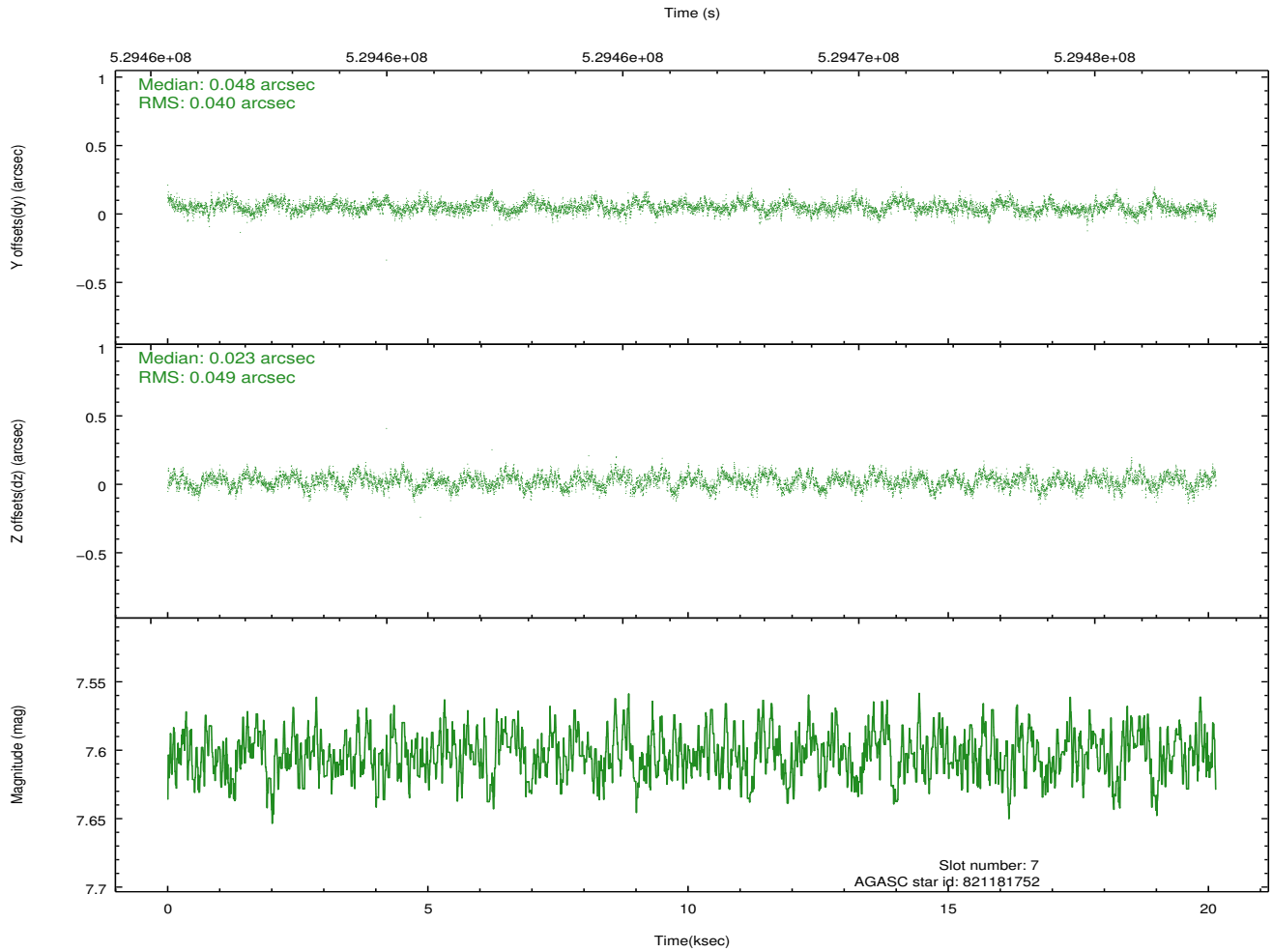
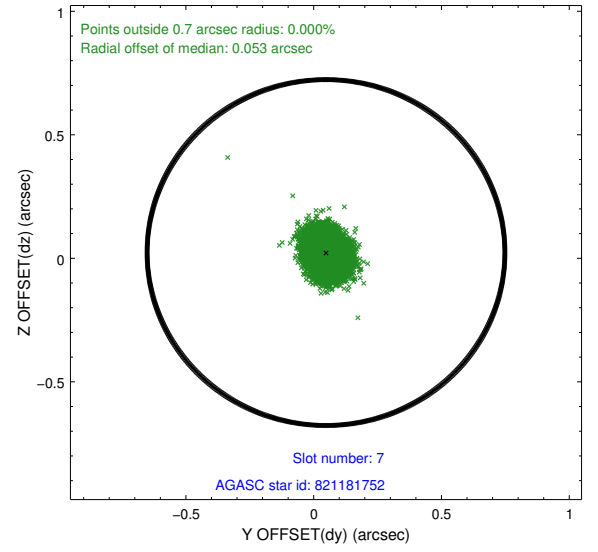
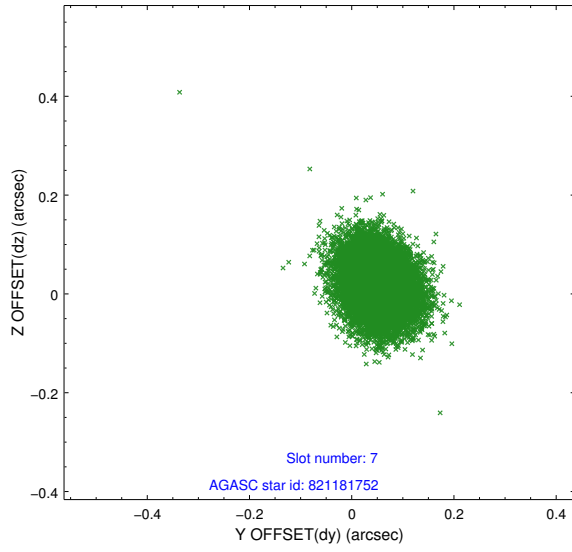
2.4.3 Slot 5



2.4.4 Slot 6

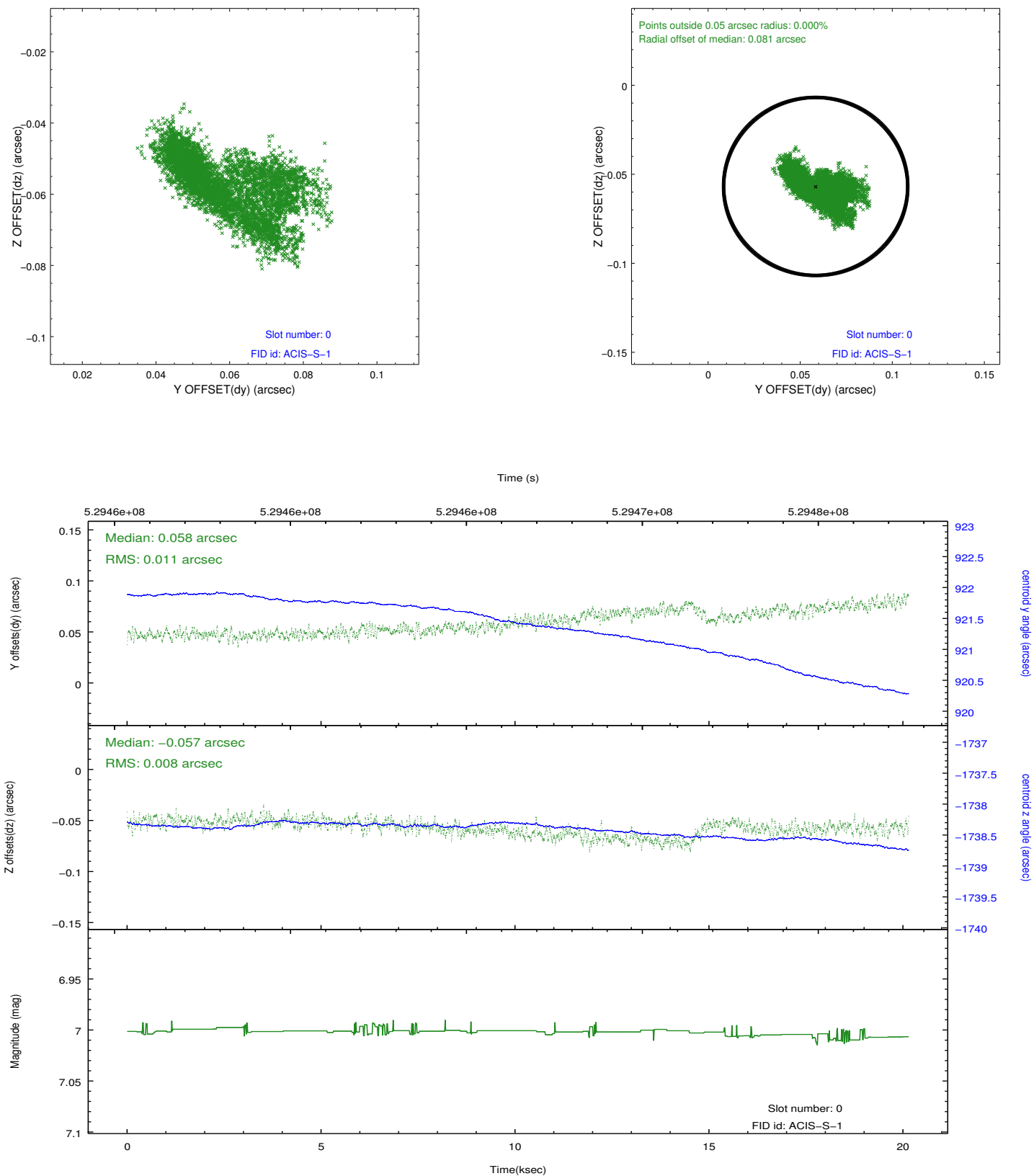


2.4.5 Slot 7

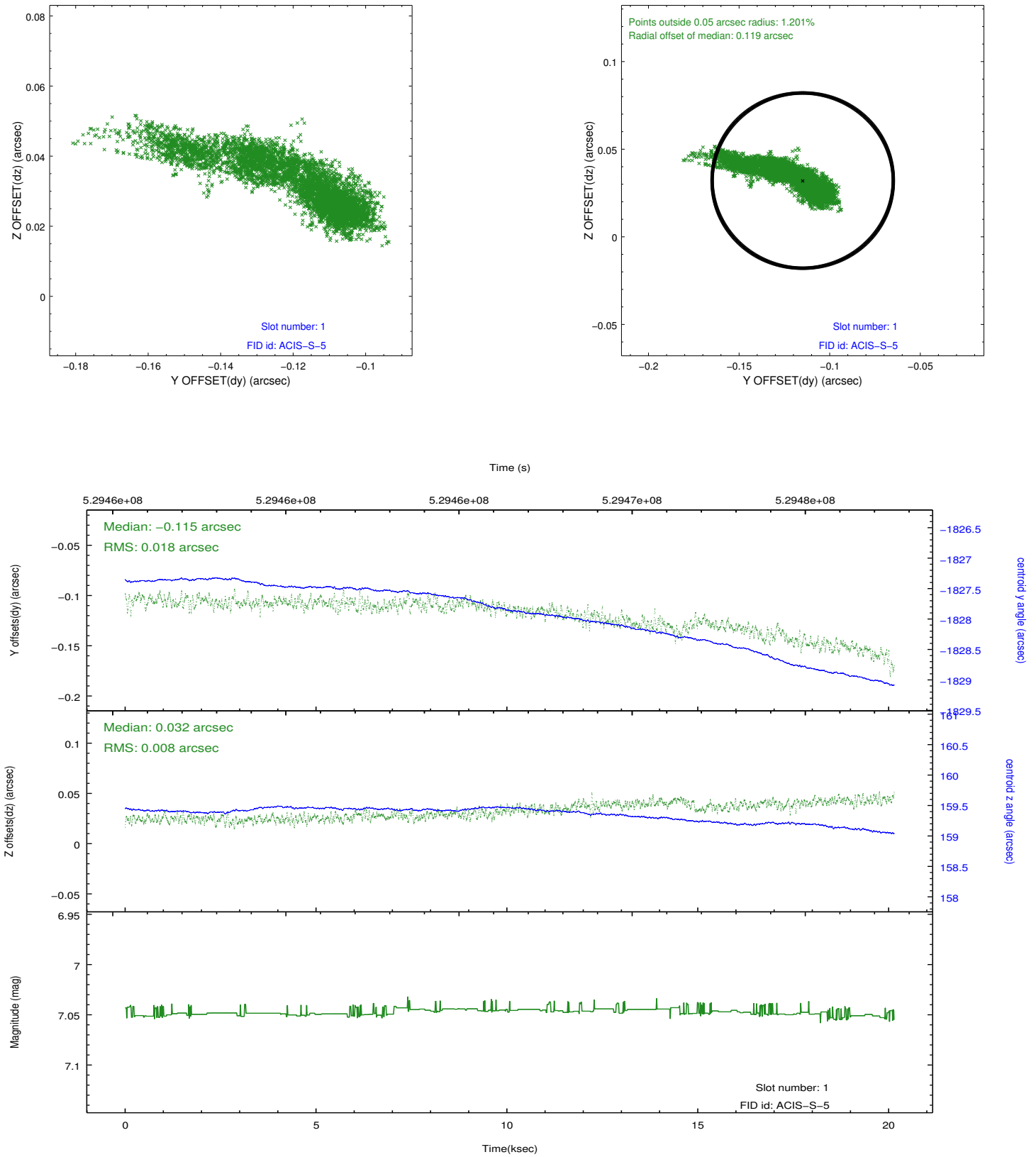


2.5 FID Slots

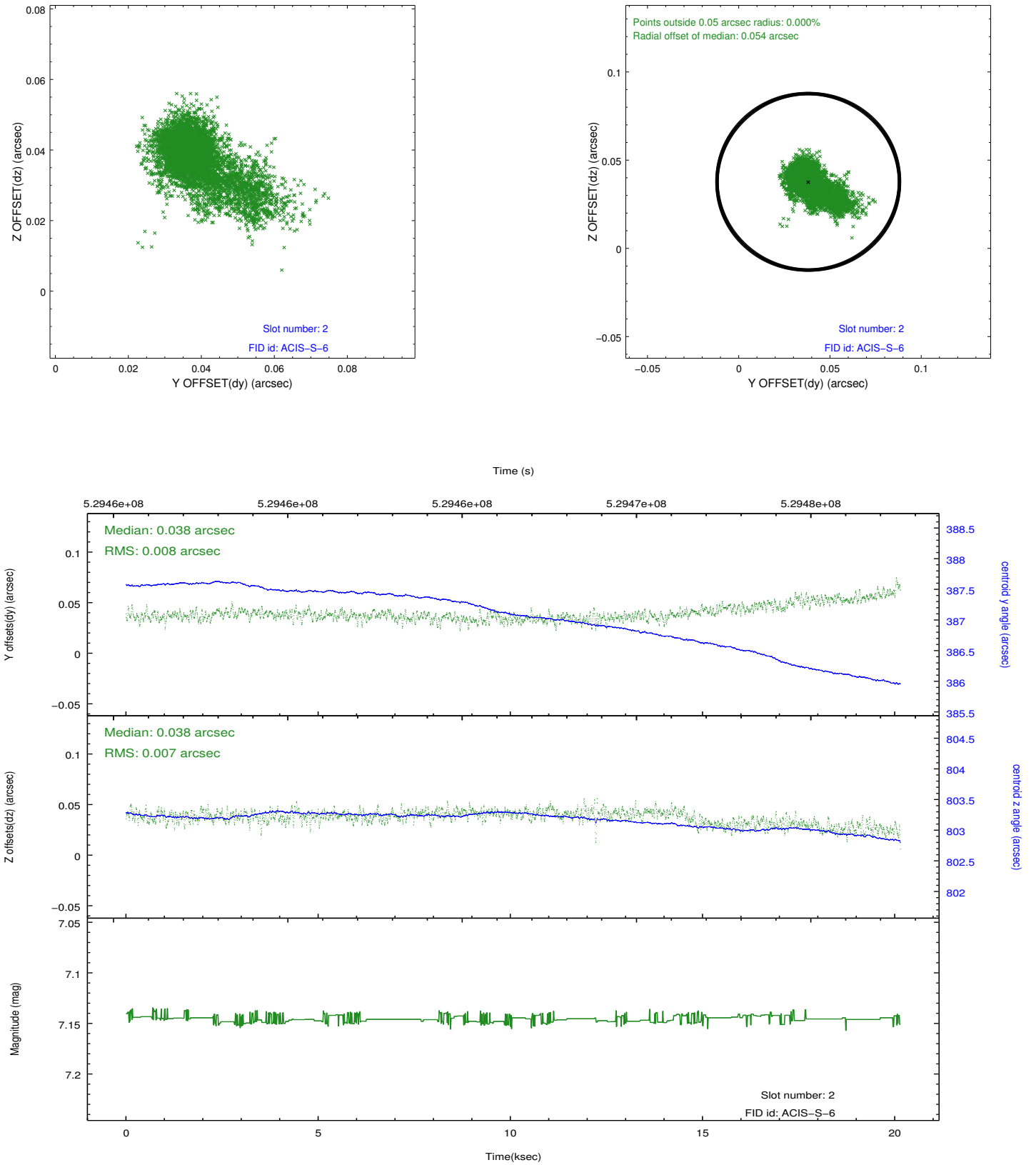
2.5.1 Slot 0



2.5.2 Slot 1



2.5.3 Slot 2



A Summary

A.1 Status

V&V Scientist	Beth Sundheim
V&V Date (YYYY-MM-DD)	2014.10.13
V&V Edition	1
V&V Disposition and Status	OK
V&V Charge Time	20.068798803806

A.2 Comments