

V&V Reference Report

L2 ASCDS Version : 8.4.5

Observation 1593 - L2 Version 3
Chandra X-Ray Center

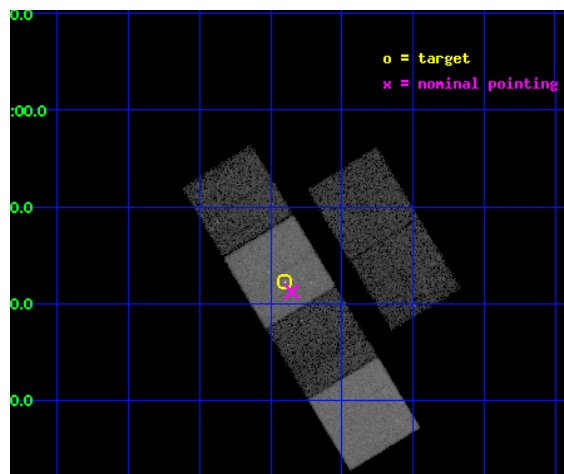
L2 Processing Date : Sep 16 2012

Contents

1	Front	2
2	OBI	3
2.1	OBI	3
2.1.1	Images	3
2.1.2	Bias	3
2.1.3	Parameters	4
2.1.4	Events	4
2.2	Compared Parameters	5
2.3	Aspect	6
2.4	Star Slots	9
2.4.1	Slot 3	9
2.4.2	Slot 4	10
2.4.3	Slot 5	11
2.4.4	Slot 6	12
2.4.5	Slot 7	13
2.5	FID Slots	14
2.5.1	Slot 0	14
2.5.2	Slot 1	15
2.5.3	Slot 2	16
A	Summary	17
A.1	Status	17
A.2	Comments	17

1 Front

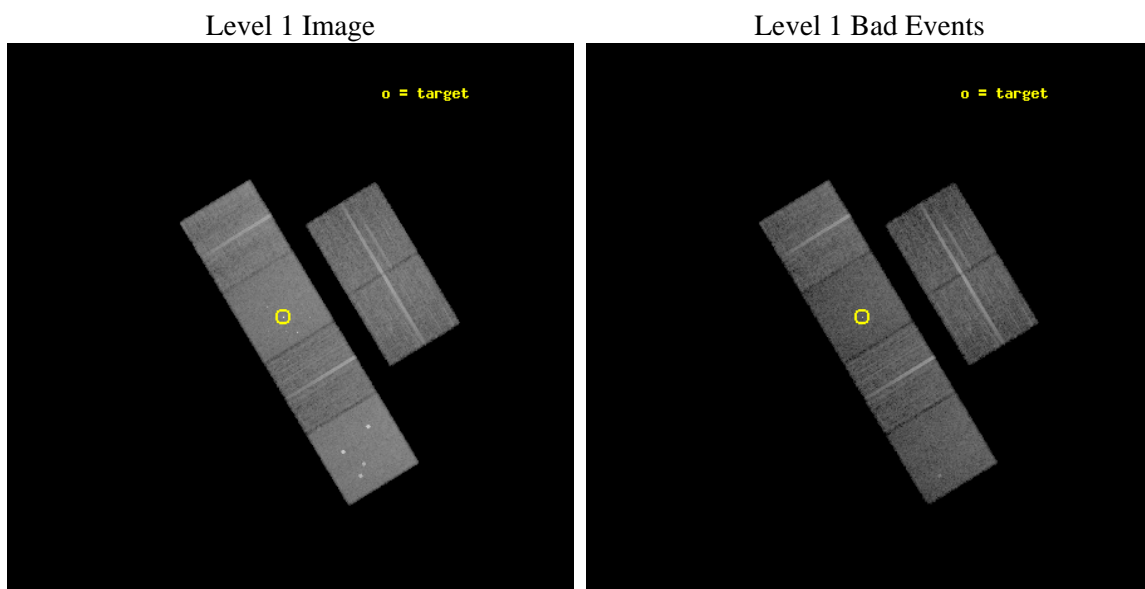
seq_num	700209	Sequence number
obs_id	1593	Observation id
title	THE NATURE OF THE EXTENDED X-RAY EMISSION AROUND THE QUASAR 3C281	
observer	Professor Andrew Fabian	Principal investigator
object	3C281	Source name
dtcycle	0	
cycle	P	events from which exps? Prim/Second/Both
ra_targ	196.975	Observer's specified target RA [deg]
dec_targ	6.703889	Observer's specified target Dec [deg]
ra_nom	196.96269471255	Nominal RA [deg]
dec_nom	6.6870245864238	Nominal Dec [deg]
roll_nom	238.84548328536	Nominal Roll [deg]
revision	3	Processing version of data
ontime	16051.200014934	Sum of GTIs [s]
livetime	15847.950055473	Livetime [s]
ontime2	16051.200014934	Sum of GTIs [s]
ontime3	16051.200014934	Sum of GTIs [s]
ontime5	16051.200014934	Sum of GTIs [s]
ontime6	16051.200014934	Sum of GTIs [s]
ontime7	16051.200014934	Sum of GTIs [s]
ontime8	16051.200014934	Sum of GTIs [s]
l2events	160346	Number of level 2 events



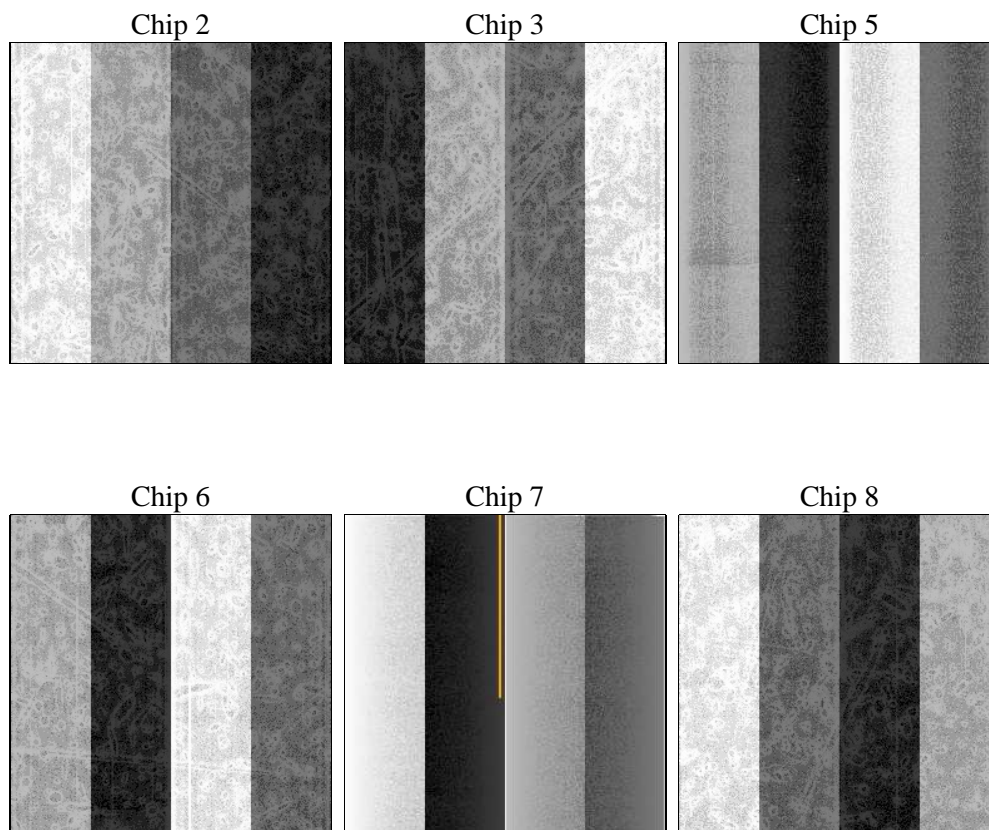
2 OBI

2.1 OBI

2.1.1 Images



2.1.2 Bias



2.1.3 Parameters

obi_num	0	Obi number	sched_exp_time	16100.000000	[s] Scheduled observation exposure time
ascdsver	8.4.5	Processing system revision	ontime	16051.200014934	Sum of GTIs [s]
caldsver	4.5.1.1	 	ontime2	16051.200014934	Sum of GTIs [s]
date	2012-09-17T01:23:10	Date and time of file creation	ontime3	16051.200014934	Sum of GTIs [s]
revision	3	Processing version of data	ontime5	16051.200014934	Sum of GTIs [s]
			ontime6	16051.200014934	Sum of GTIs [s]
			ontime7	16051.200014934	Sum of GTIs [s]
			ontime8	16051.200014934	Sum of GTIs [s]
			l1events	725934	Number of level 1 events

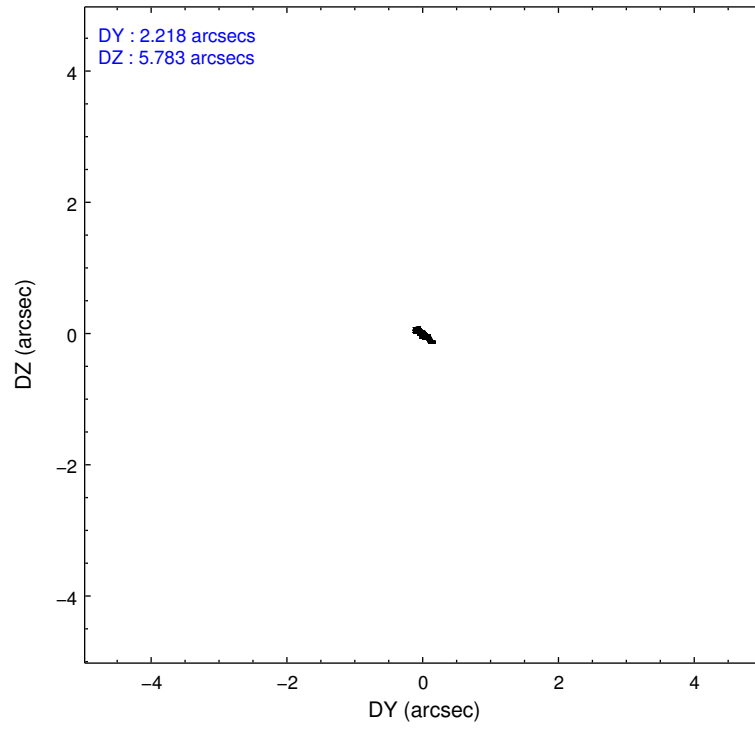
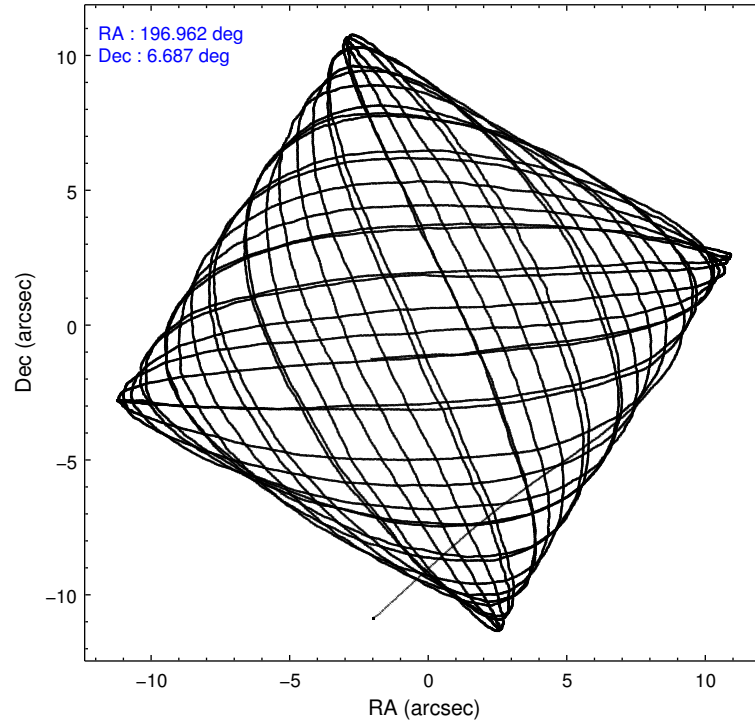
2.1.4 Events

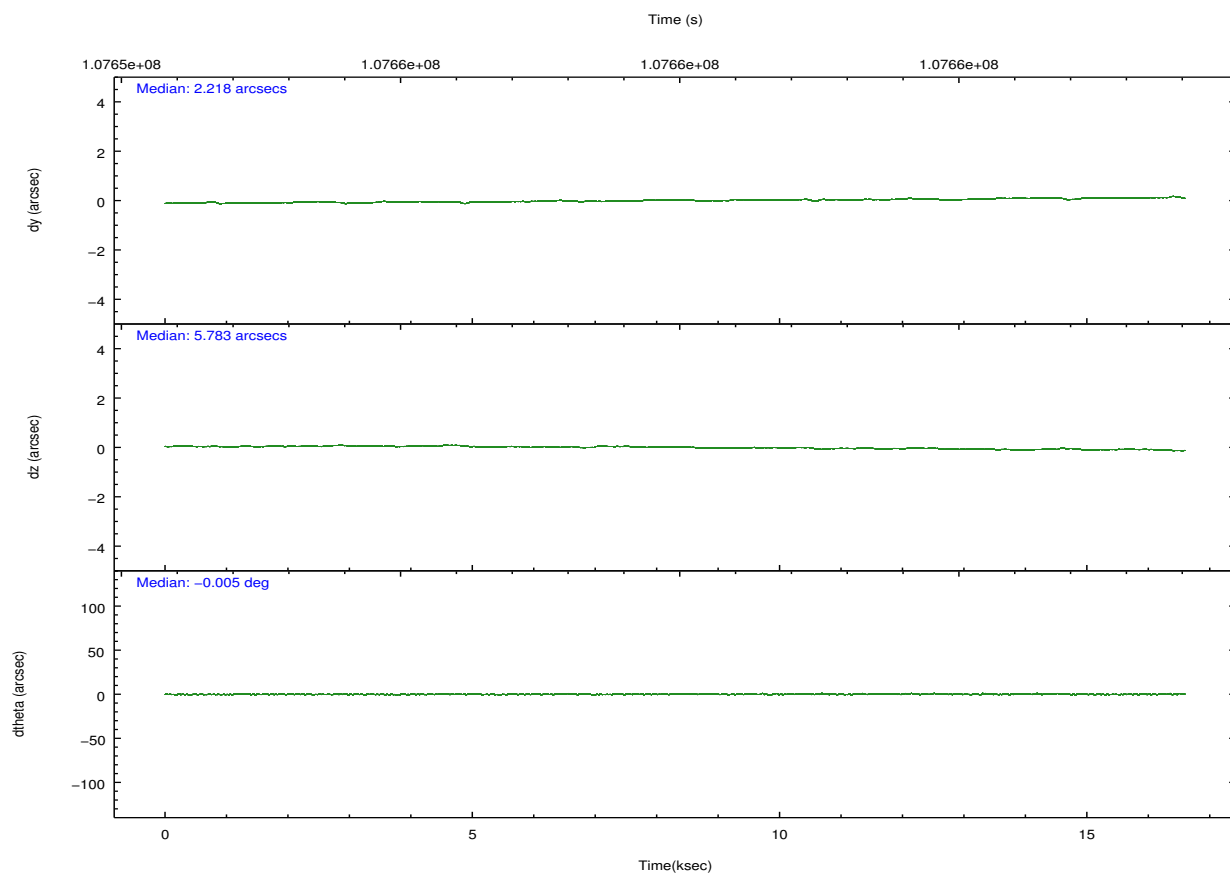
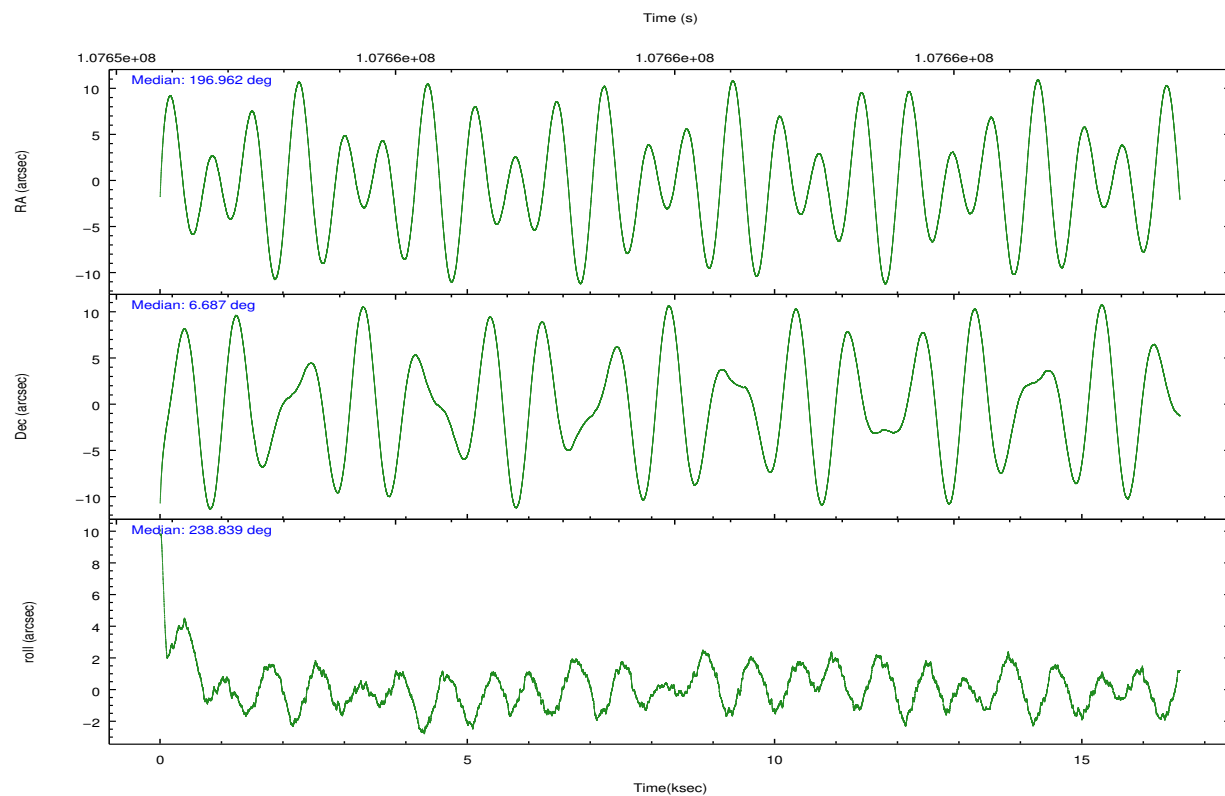
	ccd 2	ccd 3	ccd 5	ccd 6	ccd 7	ccd 8		ccd 2	ccd 3	ccd 5	ccd 6	ccd 7	ccd 8
level 1 events	106594	98244	151577	102614	135506	131399	grade 0 events	5001	5050	14033	5038	6570	7833
rejected events	94871	86700	78600	90711	76707	106487		4%	5%	9%	4%	4%	5%
rejected %	89%	88%	51%	88%	56%	81%	grade 1 events	50	48	163	37	210	77
								0%	0%	0%	0%	0%	0%
							grade 2 events	2515	2317	19477	2361	11775	5518
								2%	2%	12%	2%	8%	4%
							grade 3 events	1112	1140	2822	1094	5418	2527
								1%	1%	1%	1%	3%	1%
							grade 4 events	1121	1044	2640	1162	5376	2360
								1%	1%	1%	1%	3%	1%
							grade 5 events	3626	3883	11011	4184	12723	5342
								3%	3%	7%	4%	9%	4%
							grade 6 events	1976	1994	34029	2253	29672	6677
								1%	2%	22%	2%	21%	5%
							grade 7 events	91193	82768	67402	86485	63762	101065
								85%	84%	44%	84%	47%	76%

2.2 Compared Parameters

Parameter	Planned	Actual	Parameter	Planned	Actual
Instrument	ACIS	ACIS	Obspar format version number	7	7
Detector	ACIS-235678	ACIS-235678	Obspar file type	PREDICTED	ACTUAL
Grating	NONE	NONE	Obspar update status	NONE	UPDATED
Data mode	FAINT	FAINT	Number of optional ACIS chips dropped	0	0
Observation mode	POINTING	POINTING	On-chip summing requested	N	N
[deg] Pointing RA	196.962918	196.9626947125482	Subarray requested	NONE	NONE
[deg] Pointing Dec	6.714304	6.687024586423795	Alternating exposures requested	N	N
[deg] Pointing Roll	238.688827	238.8454832853553	[s] Primary exposure time	0.000000	3.2
[mm] SIM focus pos	-0.684267	-0.6828225247311905			
[mm] SIM defocus	0	0.001444936568705701			
[mm] SIM translation stage pos	-190.132523	-190.1400660498719			
[mm] SIM translation stage offset	0	0.00754346686406393			
[s] Observation start time (MET)	107652113.184000	107650986.50211			
Observation start date	2001-05-30T23:20:49	2001-05-30T23:03:06			
[s] Observation end time (MET)	107668213.184000	107668691.3278			
Observation end date	2001-05-31T03:49:09	2001-05-31T03:58:11			
Read mode	TIMED	TIMED			

2.3 Aspect



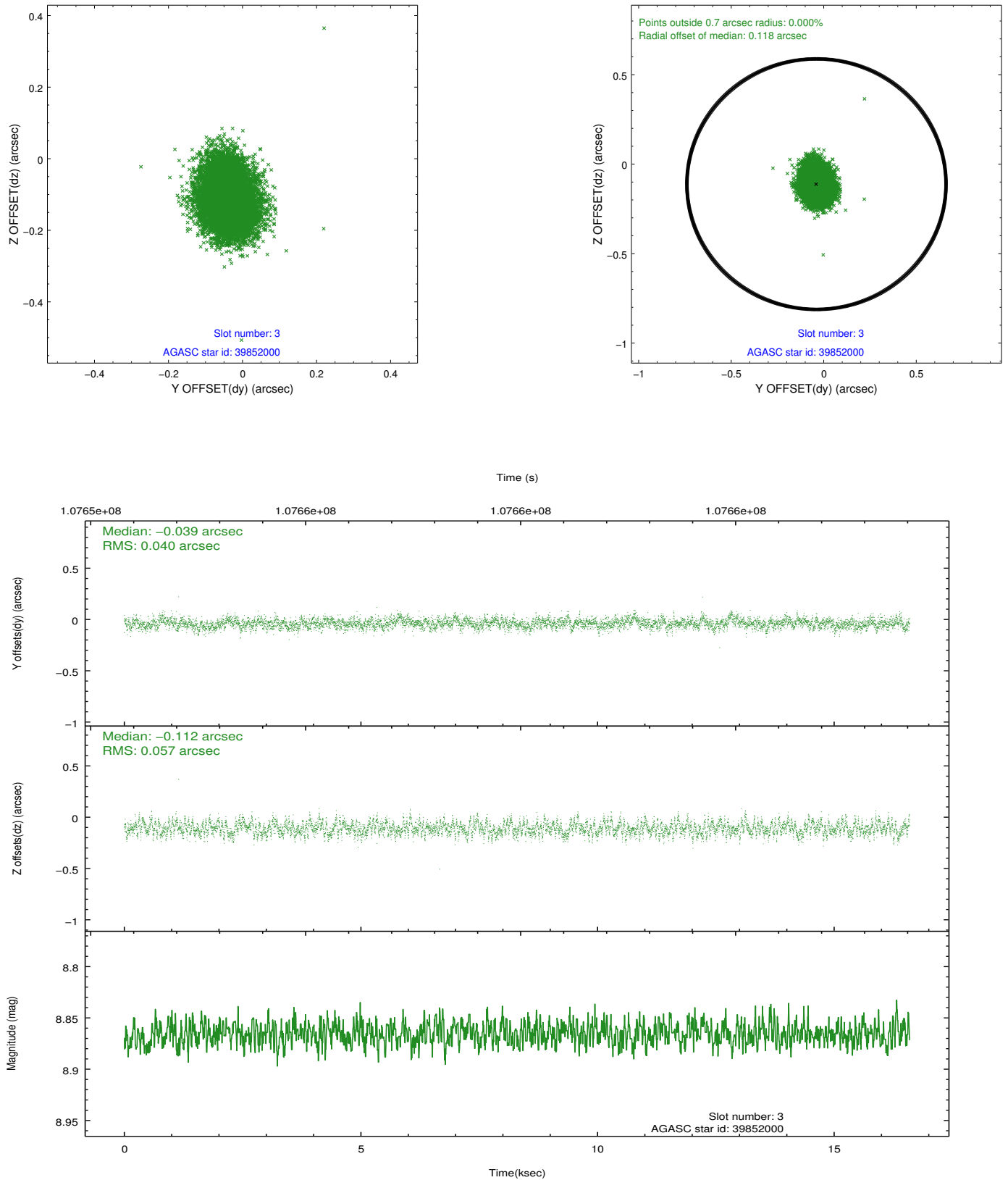


Slot Statistics

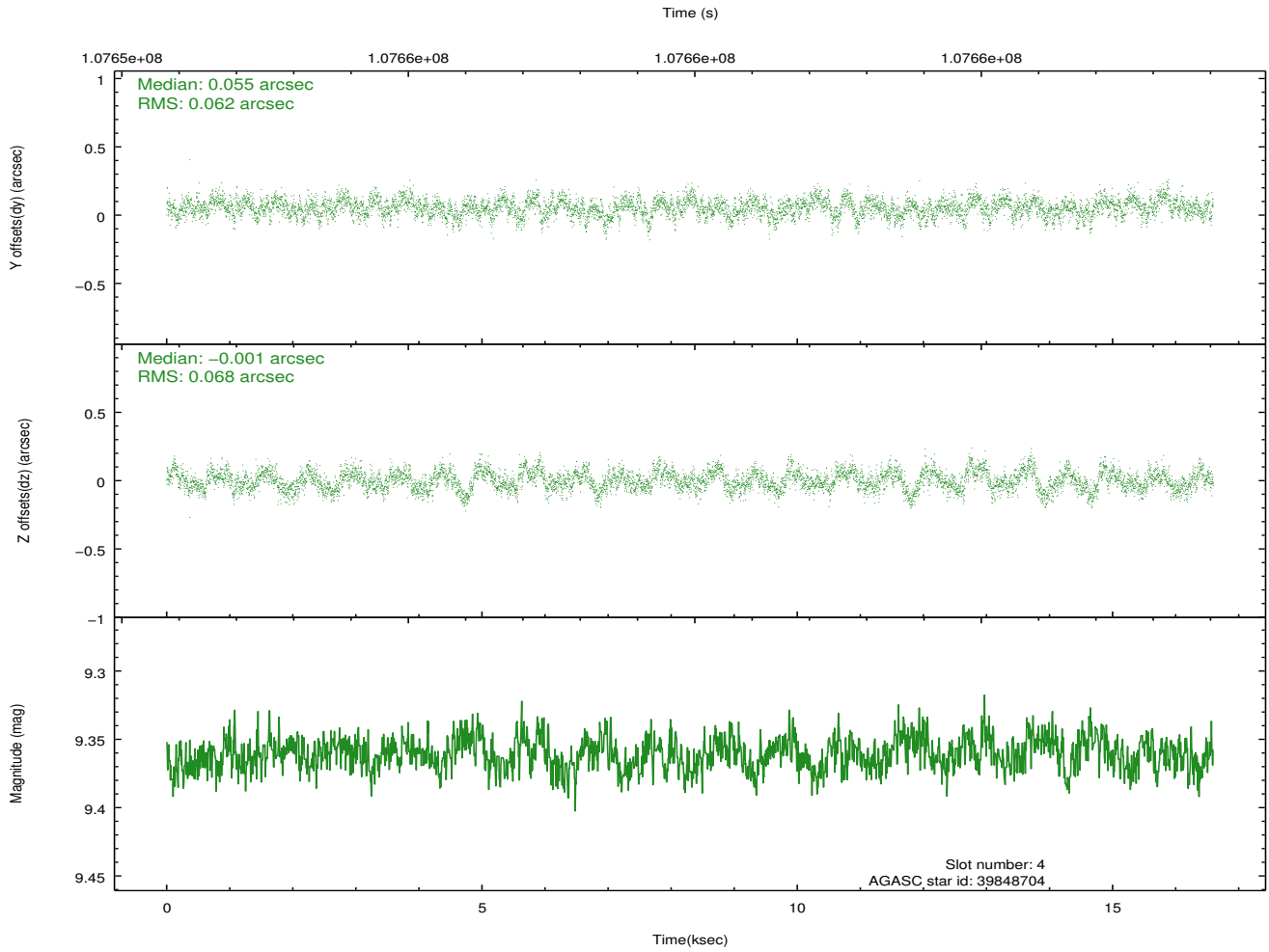
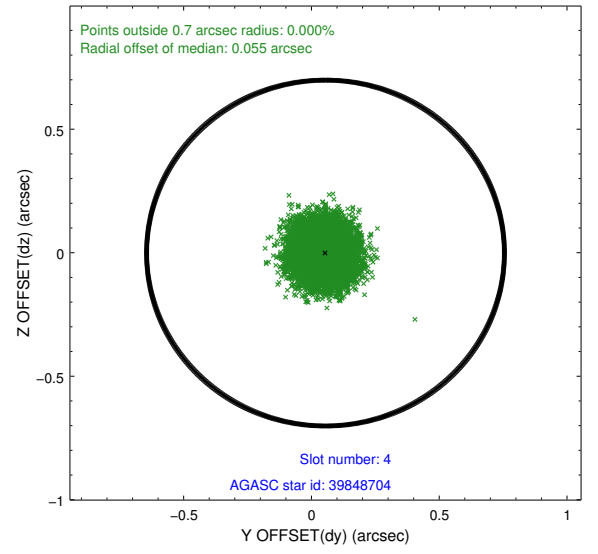
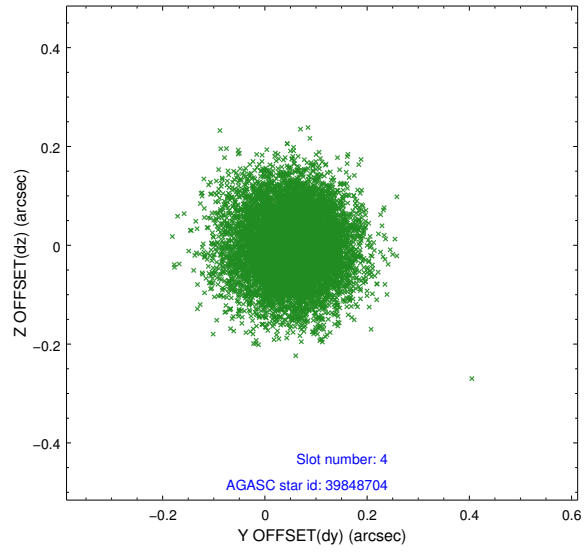
slot	status	id	mag	n_pts	med_dy	med_dz	dr1	dr2	ra	dec	mean_y	mean_z
0	FID	ACIS-S-3	7.36	4044	-0.081	-0.057	0.007	0.012	0.000000	0.000000	58.31	-1856.03
1	FID	ACIS-S-4	7.20	4047	-0.008	0.070	0.006	0.011	0.000000	0.000000	2158.51	181.38
2	FID	ACIS-S-5	7.24	4048	0.061	-0.003	0.007	0.011	0.000000	0.000000	-1807.29	175.25
3	GUIDE	39852000	8.87	8092	-0.039	-0.112	0.075	0.120	196.677623	7.146715	-801.11	-1679.24
4	GUIDE	39848704	9.36	8095	0.055	-0.001	0.099	0.157	196.315302	6.502866	1852.31	-1583.52
5	GUIDE	39853824	9.44	8089	-0.049	0.124	0.075	0.122	197.293822	6.828629	-967.26	797.07
6	GUIDE	39853600	9.28	8089	-0.055	0.047	0.075	0.122	197.267632	6.709572	-552.88	940.35
7	GUIDE	39847472	9.72	8087	0.089	-0.060	0.100	0.164	196.863666	6.535727	733.12	31.88

2.4 Star Slots

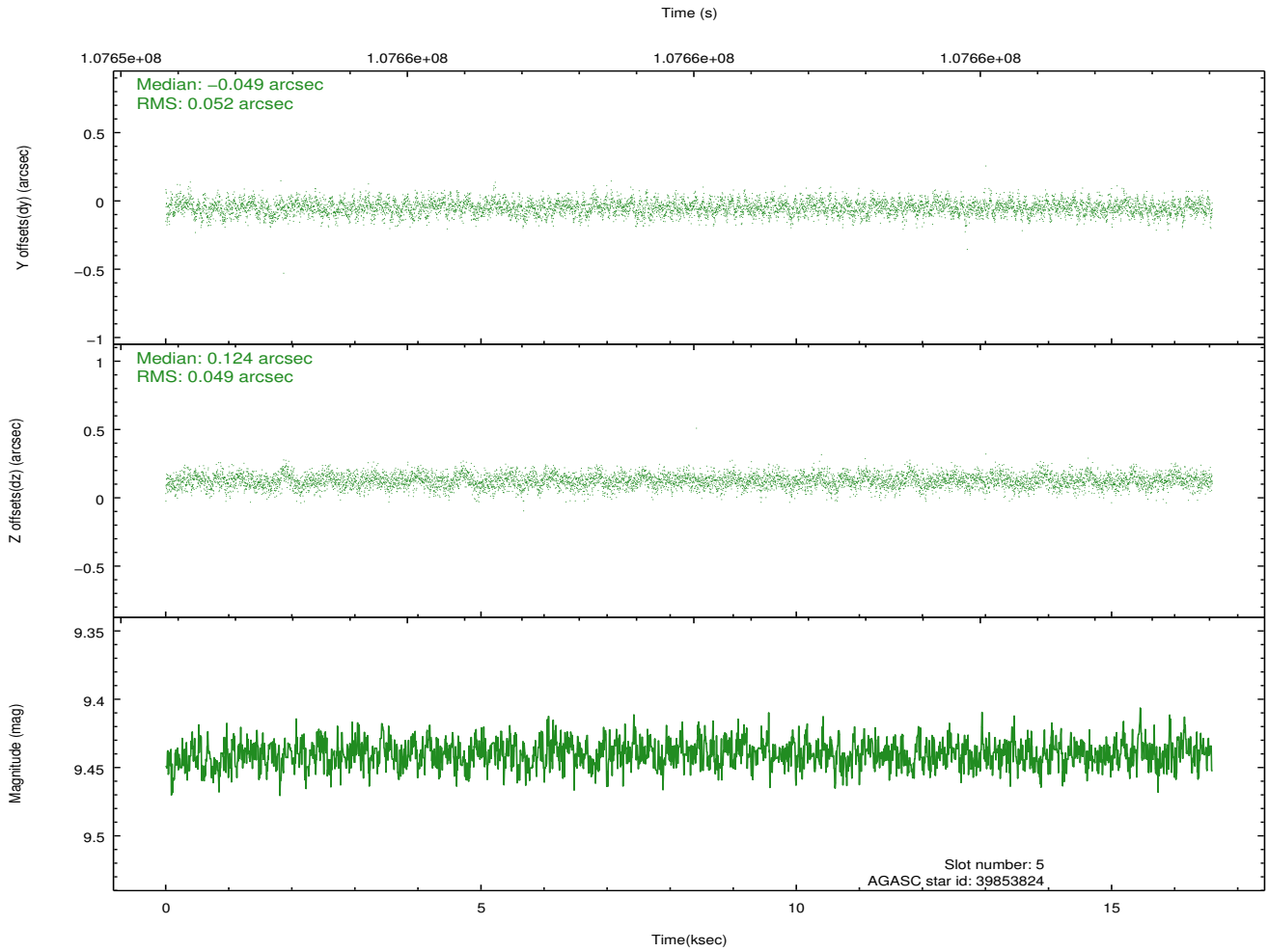
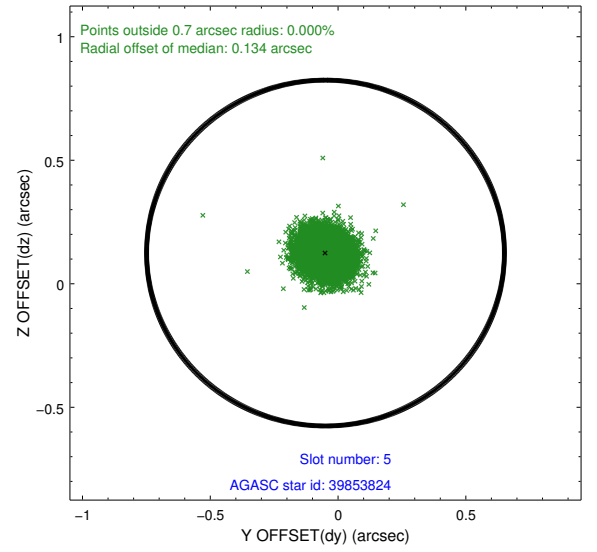
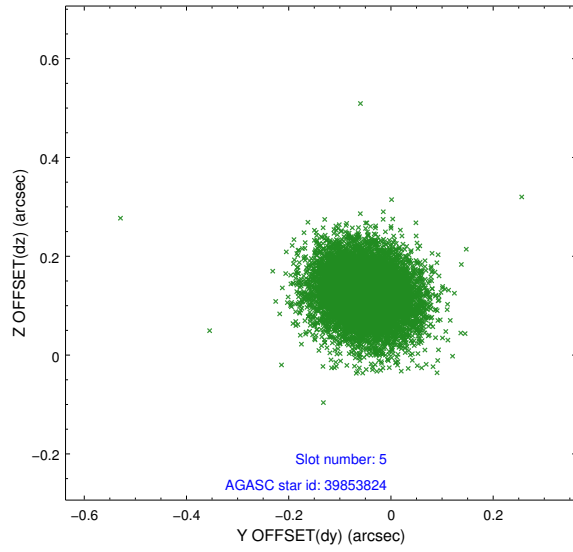
2.4.1 Slot 3



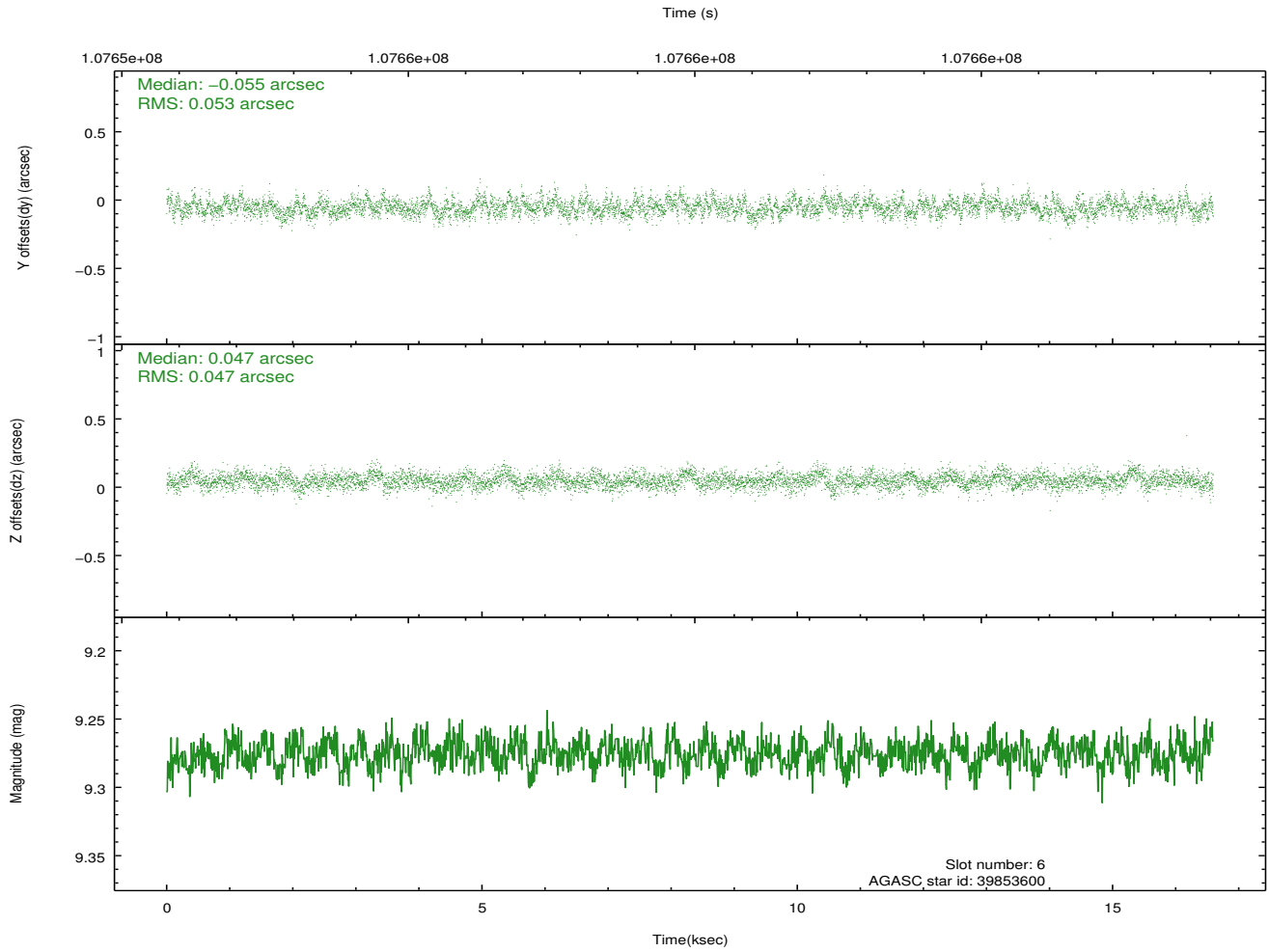
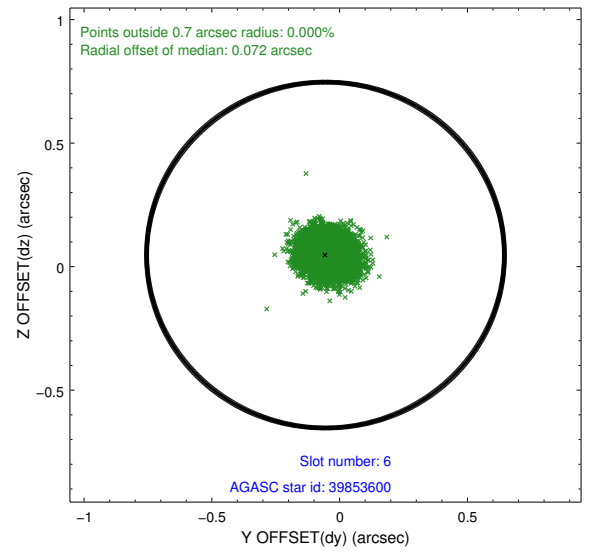
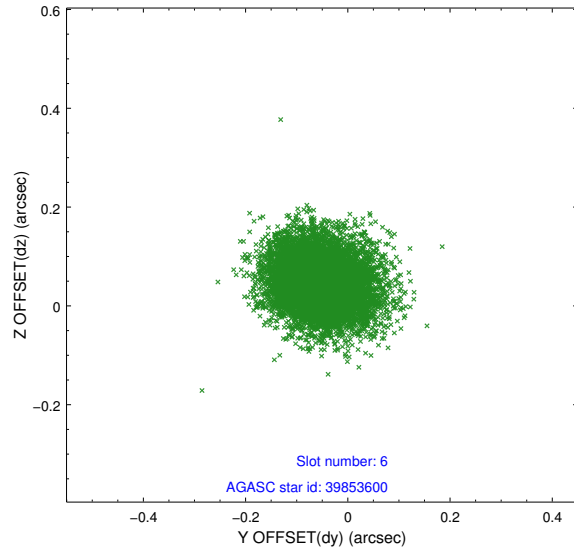
2.4.2 Slot 4



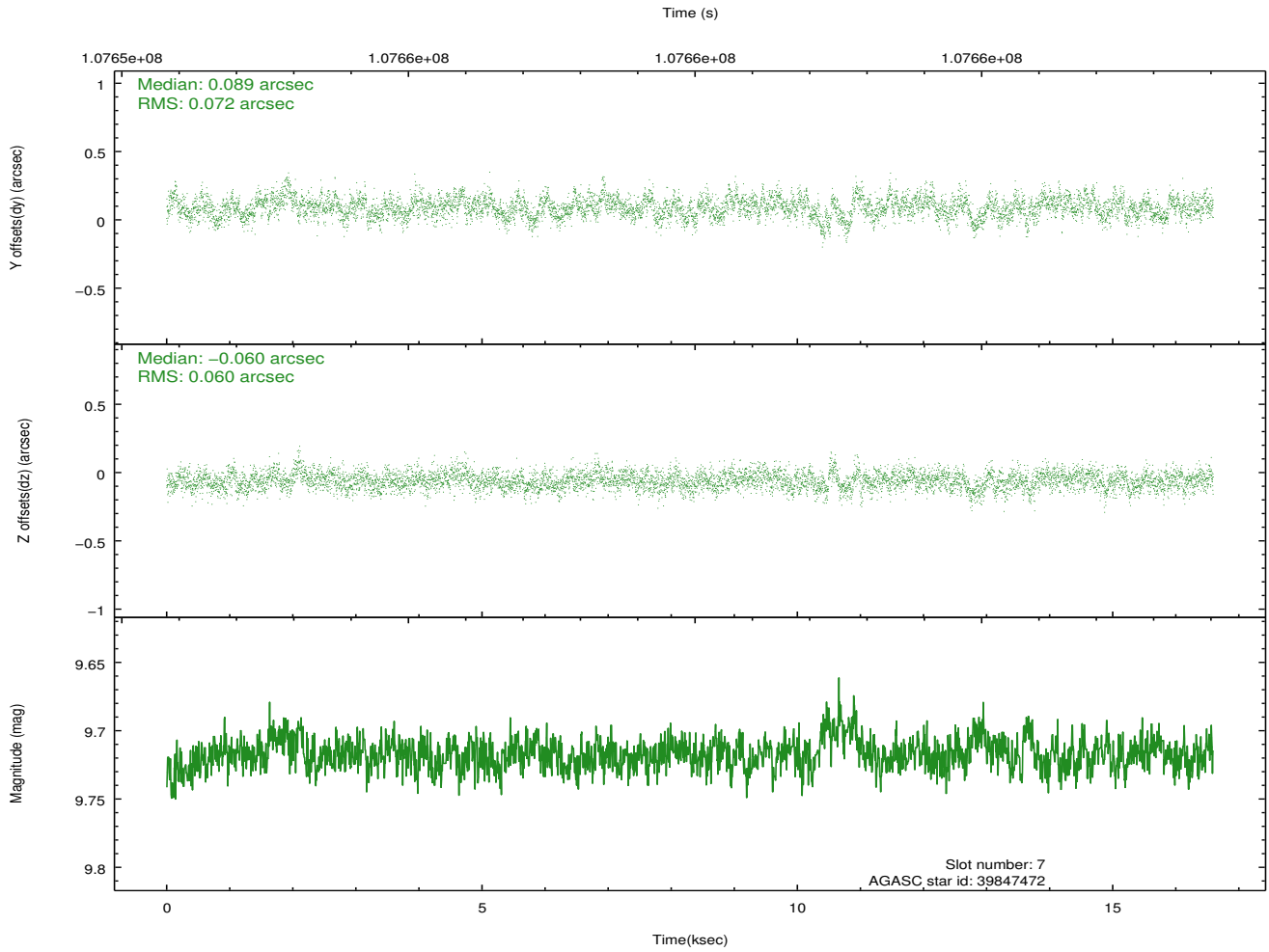
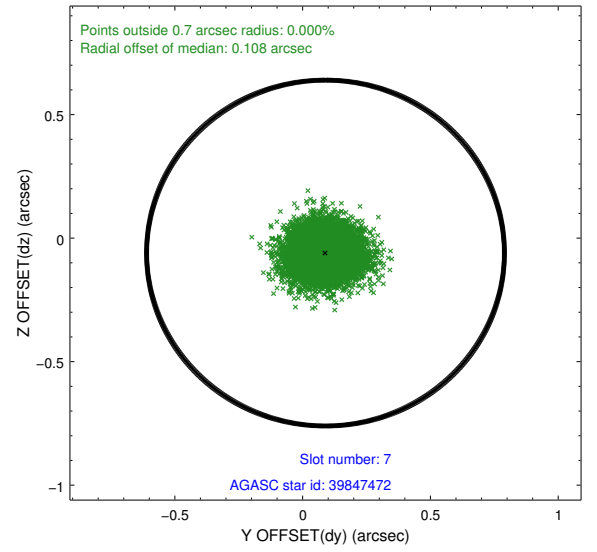
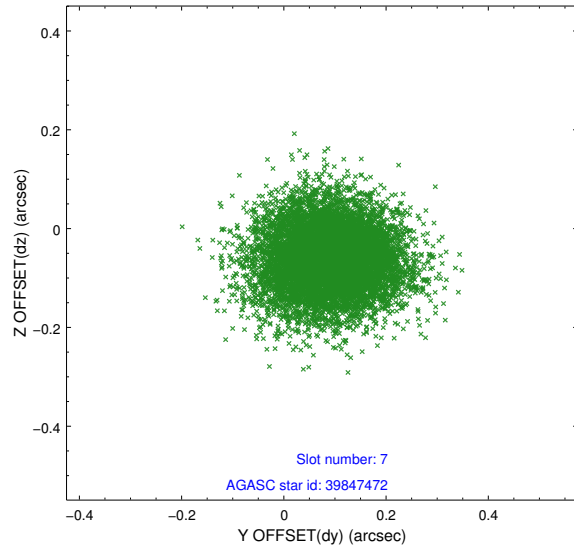
2.4.3 Slot 5



2.4.4 Slot 6

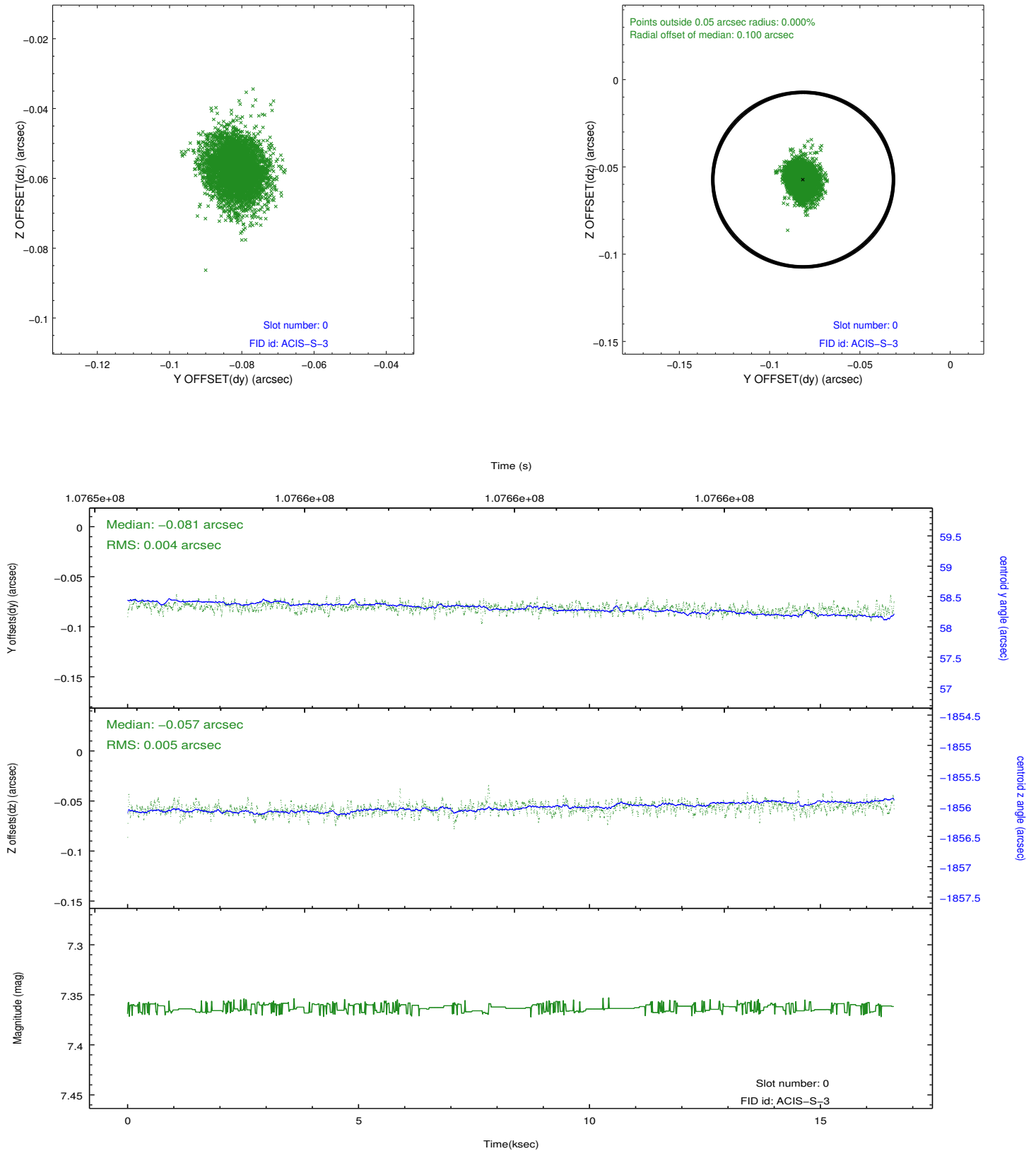


2.4.5 Slot 7

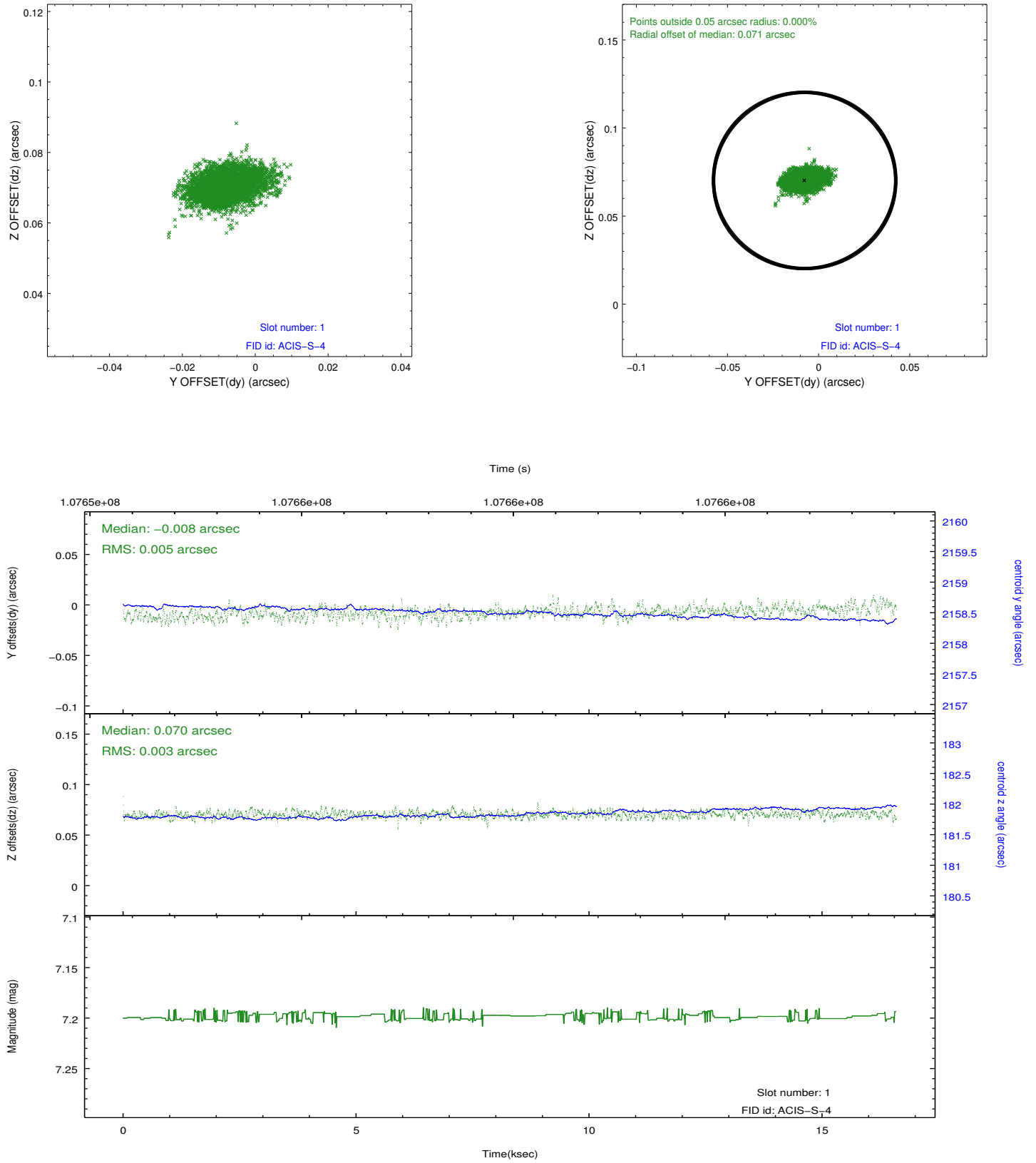


2.5 FID Slots

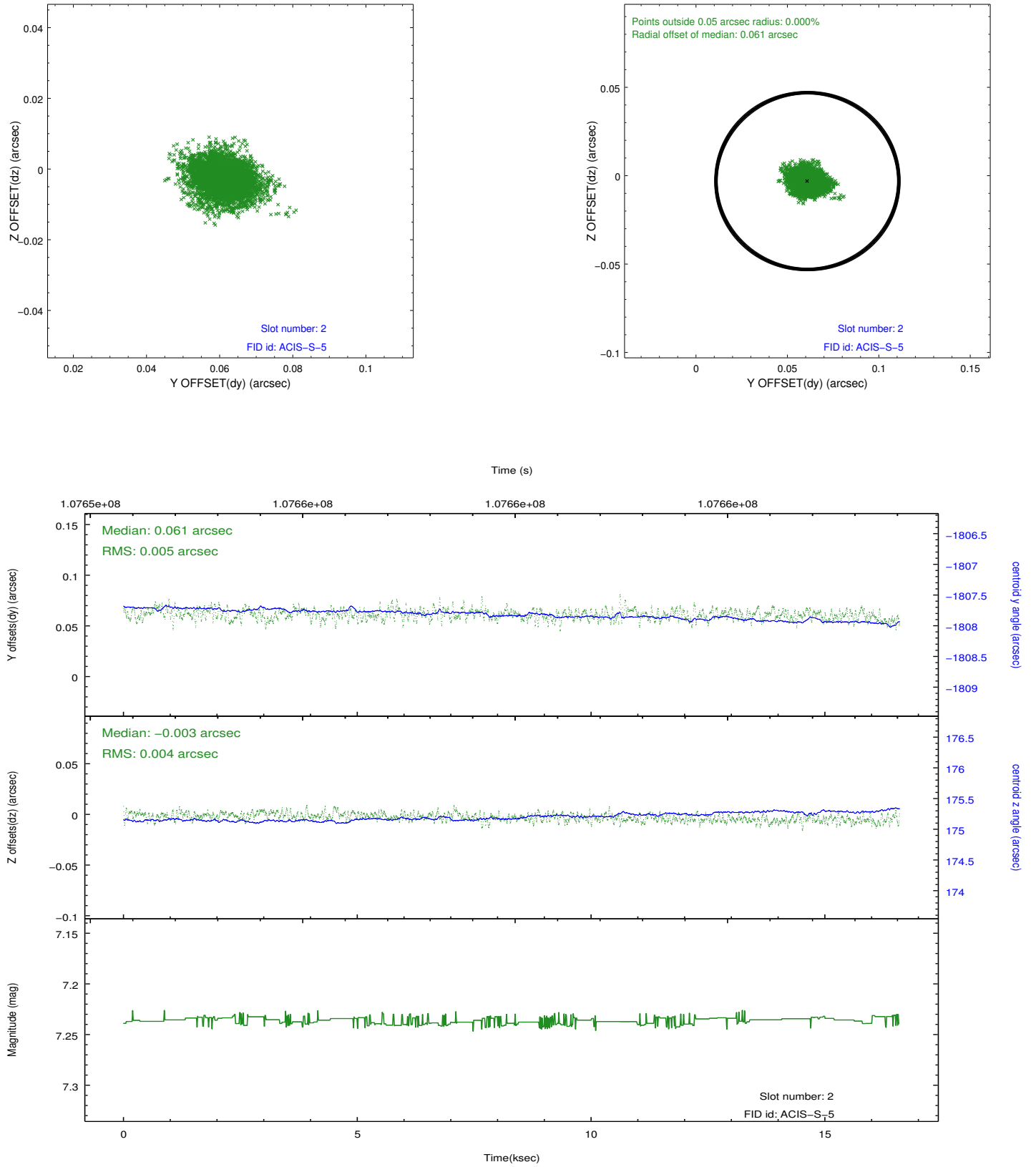
2.5.1 Slot 0



2.5.2 Slot 1



2.5.3 Slot 2



A Summary

A.1 Status

V&V Scientist	Jen Lauer
V&V Date (YYYY-MM-DD)	2012.09.19
V&V Edition	1
V&V Disposition and Status	OK
V&V Charge Time	16

A.2 Comments

Charge time for this ObsId remains at previous value of 16 ks although with the current processing the charge time would have been 16.05 ksec.