

V&V Reference Report

L2 ASCDS Version : 7.6.9

Observation 1593 - L2 Version 001
Chandra X-Ray Center

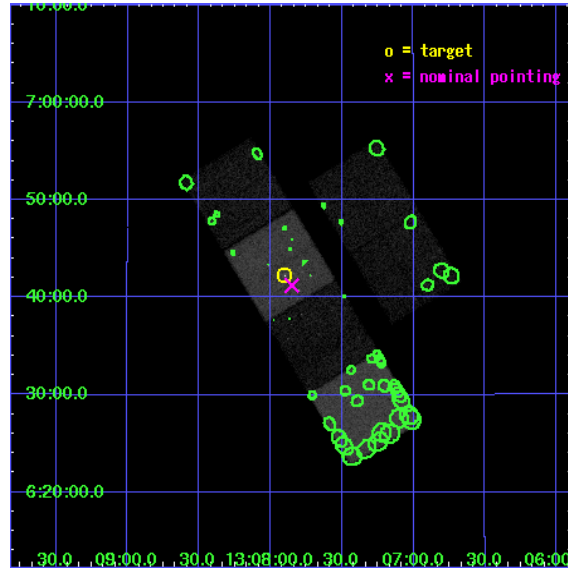
L2 Processing Date : Nov 25 2006

Contents

1	Front	2
2	OBI	3
2.1	OBI	3
2.1.1	Images	3
2.1.2	Bias	3
2.1.3	Parameters	4
2.1.4	Events	4
2.2	Compared Parameters	5
2.3	Aspect	6
2.4	Star Slots	9
2.4.1	Slot 3	9
2.4.2	Slot 4	10
2.4.3	Slot 5	11
2.4.4	Slot 6	12
2.4.5	Slot 7	13
2.5	FID Slots	14
2.5.1	Slot 0	14
2.5.2	Slot 1	15
2.5.3	Slot 2	16
3	Point Sources	17
A	Summary	18
A.1	Status	18
A.2	Comments	18

1 Front

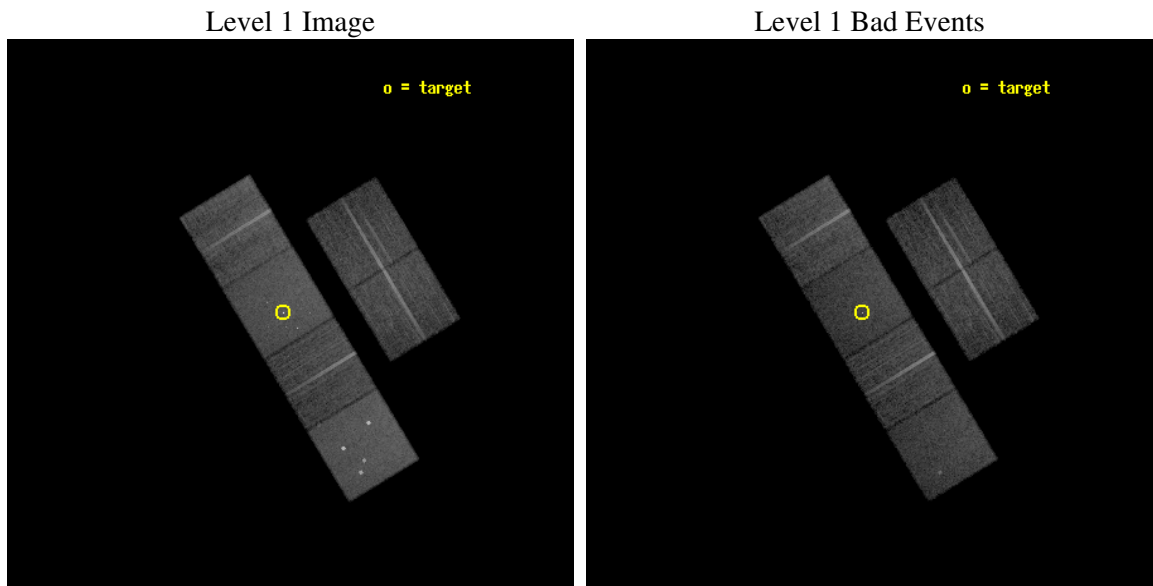
seq_num	700209
obs_id	1593
title	THE NATURE OF THE EXTENDED X-RAY EMISSION AROUND THE QUASAR 3C281
observer	Prof Andrew Fabian
object	3C281
dtcycle	0
cycle	P
ra_targ	196.975
dec_targ	6.703889
ra_nom	196.96269470969
dec_nom	6.6870245907438
roll_nom	238.84548328518
revision	2
ontime	16051.200014949
livetime	15847.950055487
ontime2	16051.200014949
ontime3	16051.200014949
ontime5	16051.200014949
ontime6	16051.200014949
ontime7	16051.200014949
ontime8	16051.200014949
l2events	154096



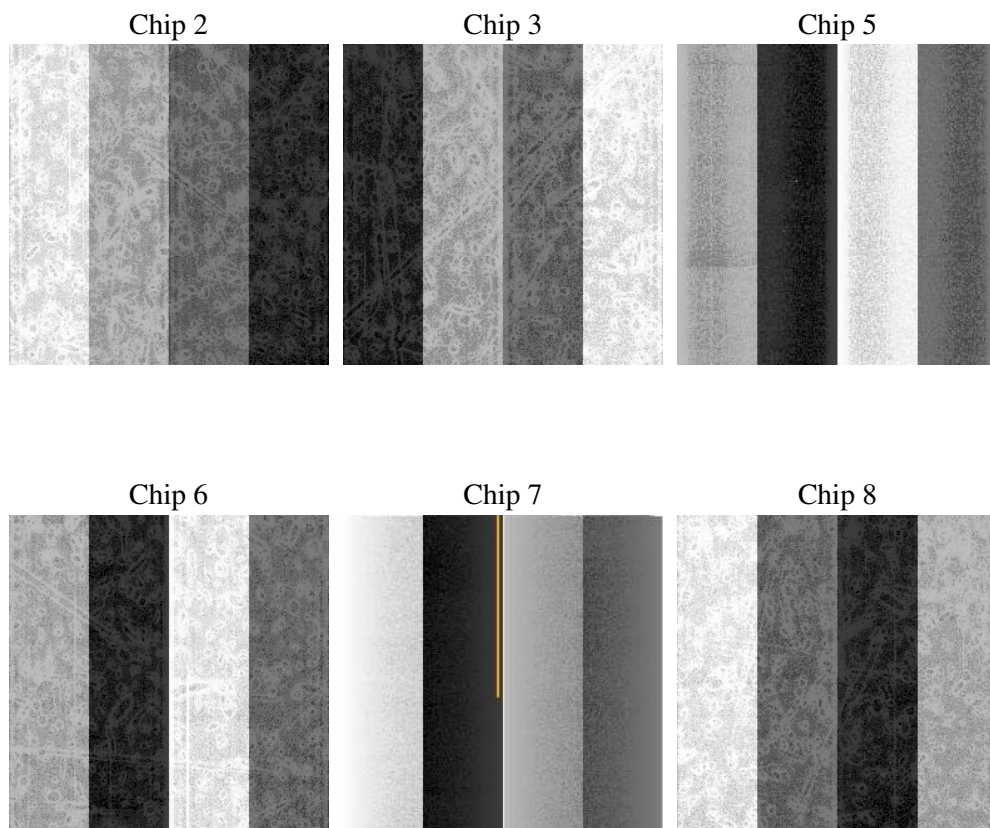
2 OBI

2.1 OBI

2.1.1 Images



2.1.2 Bias



2.1.3 Parameters

obi_num	0
ascdsver	7.6.9
caldsver	3.2.4
date	2006-11-25T03:43:23
revision	2

sched_exp_time	16100.000000
ontime	16055.912765488
ontime2	16055.912765488
ontime3	16055.912745565
ontime5	16055.912765488
ontime6	16055.912765488
ontime7	16055.912765488
ontime8	16055.912765488
l1events	725934

2.1.4 Events

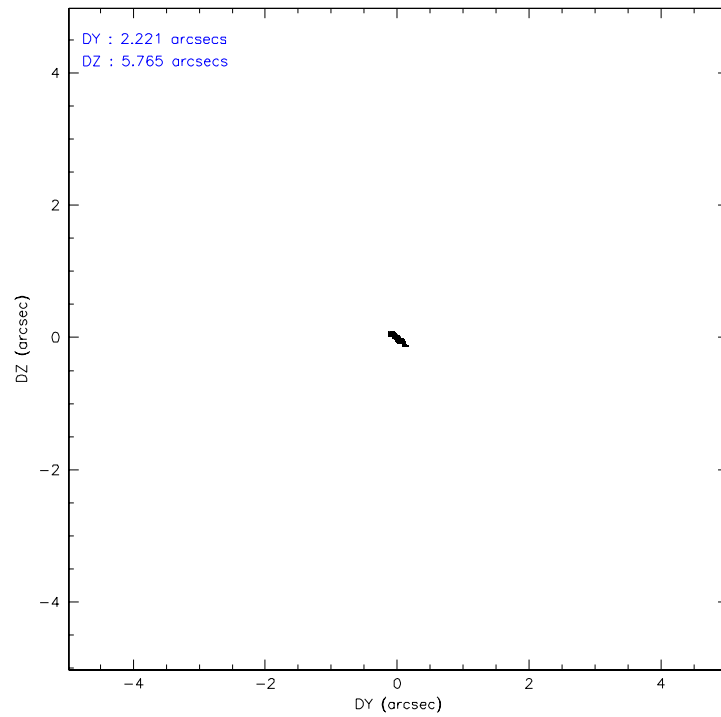
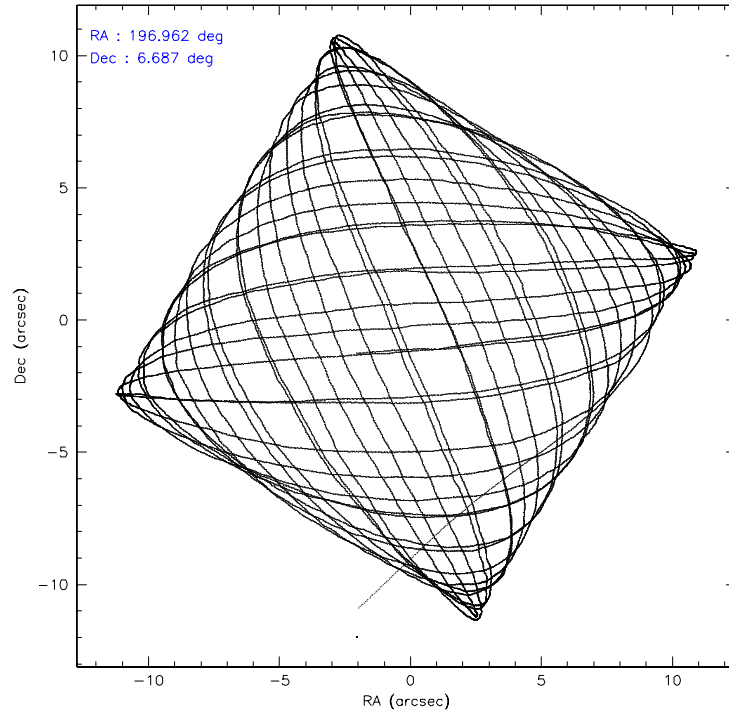
	ccd 2	ccd 3	ccd 5	ccd 6	ccd 7	ccd 8
level 1 events	106594	98244	151577	102614	135506	131399
rejected events	94874	86703	80765	90716	81125	106490
rejected %	89%	88%	53%	88%	59%	81%

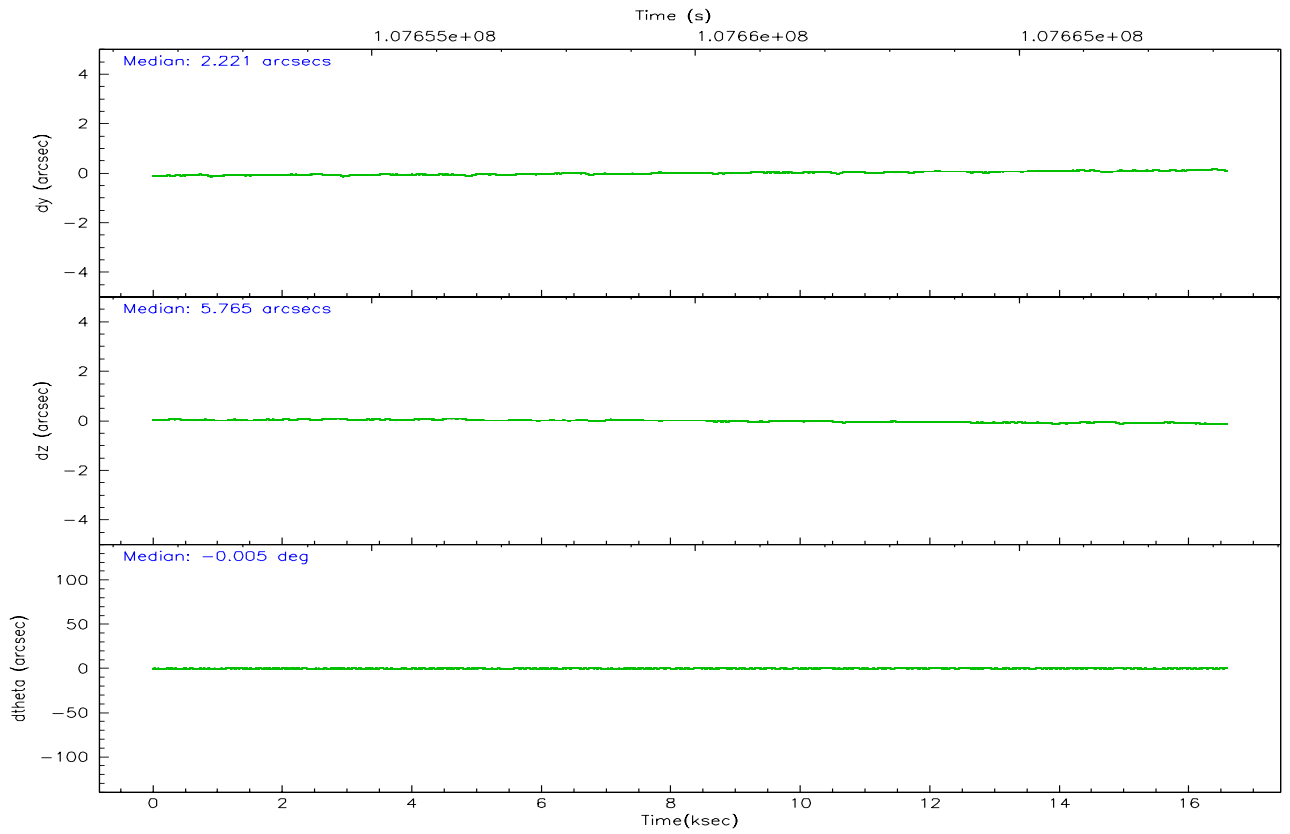
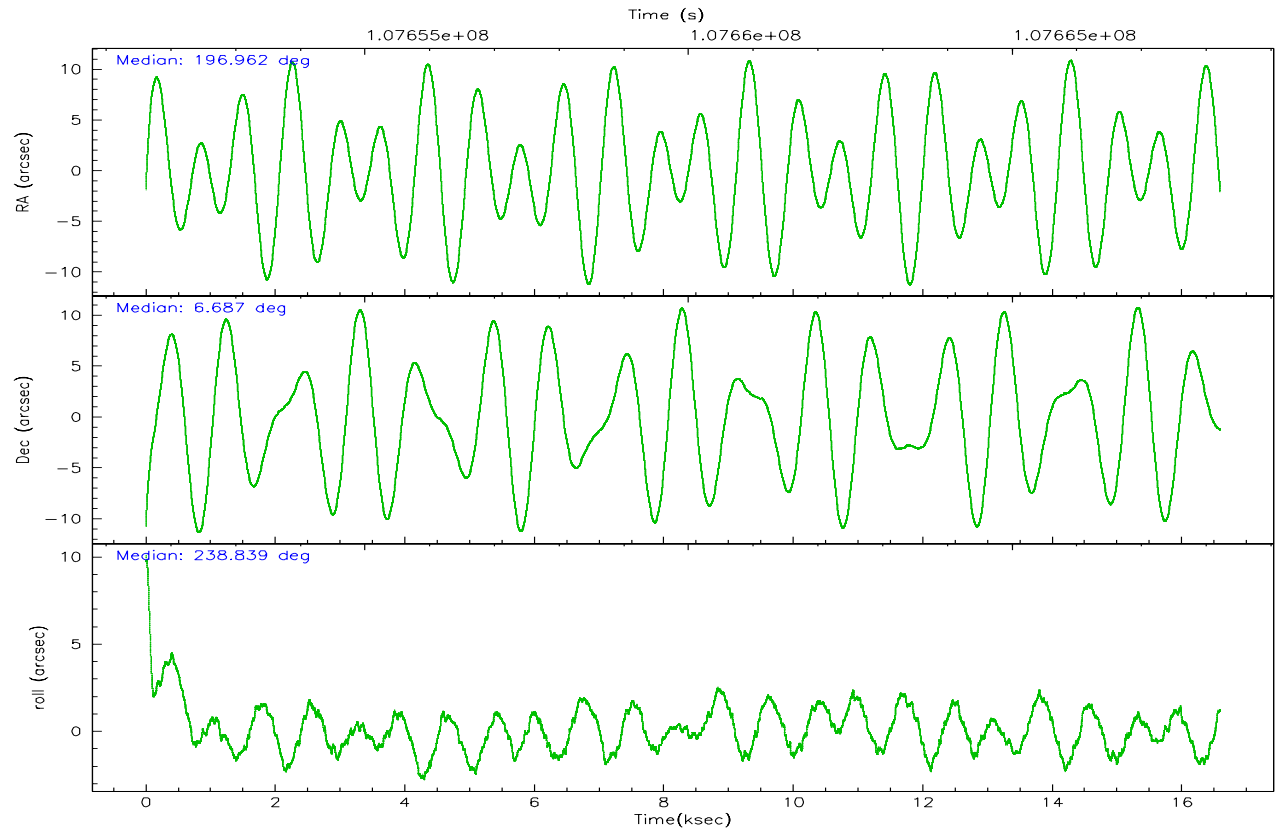
	ccd 2	ccd 3	ccd 5	ccd 6	ccd 7	ccd 8
grade 0 events	5001	5050	12314	5038	4479	7834
	4%	5%	8%	4%	3%	5%
grade 1 events	50	48	105	37	160	77
	0%	0%	0%	0%	0%	0%
grade 2 events	2515	2317	19767	2361	13379	5517
	2%	2%	13%	2%	9%	4%
grade 3 events	1112	1140	1537	1094	3163	2527
	1%	1%	1%	1%	2%	1%
grade 4 events	1121	1044	1419	1162	3026	2360
	1%	1%	0%	1%	2%	1%
grade 5 events	3626	3883	7109	4184	9026	5343
	3%	3%	4%	4%	6%	4%
grade 6 events	1976	1994	35816	2253	30353	6676
	1%	2%	23%	2%	22%	5%
grade 7 events	91193	82768	73510	86485	71920	101065
	85%	84%	48%	84%	53%	76%

2.2 Compared Parameters

Parameter	Planned	Actual	Parameter	Planned	Actual
Instrument	ACIS	ACIS	Obspar format version number	6	6
Detector	ACIS-235678	ACIS-235678	Obspar file type	PREDICTED	ACTUAL
Grating	NONE	NONE	Obspar update status	NONE	UPDATED
Data mode	FAINT	FAINT	Number of optional ACIS chips dropped	0	0
Observation mode	POINTING	POINTING	On-chip summing requested	N	N
Pointing RA	196.962918	196.9626947096907	Subarray requested	NONE	NONE
Pointing Dec	6.714304	6.687024590743819	Alternating exposures requested	N	N
Pointing Roll	238.688827	238.8454832851828	Primary exposure time	0.000000	3.2
SIM focus pos (mm)	-0.684267	-0.6828225247311905			
SIM defocus (mm)	0	0.001444936568705701			
SIM translation stage pos (mm)	-190.132523	-190.1400660498719			
SIM translation stage offset (mm)	0	0.00754346686406393			
Observation start time	107652113.184000	107650986.50211			
Observation start date	2001-05-30T23:20:49	2001-05-30T23:03:06			
Observation end time	107668213.184000	107668691.3278			
Observation end date	2001-05-31T03:49:09	2001-05-31T03:58:11			
Read mode	TIMED	TIMED			

2.3 Aspect



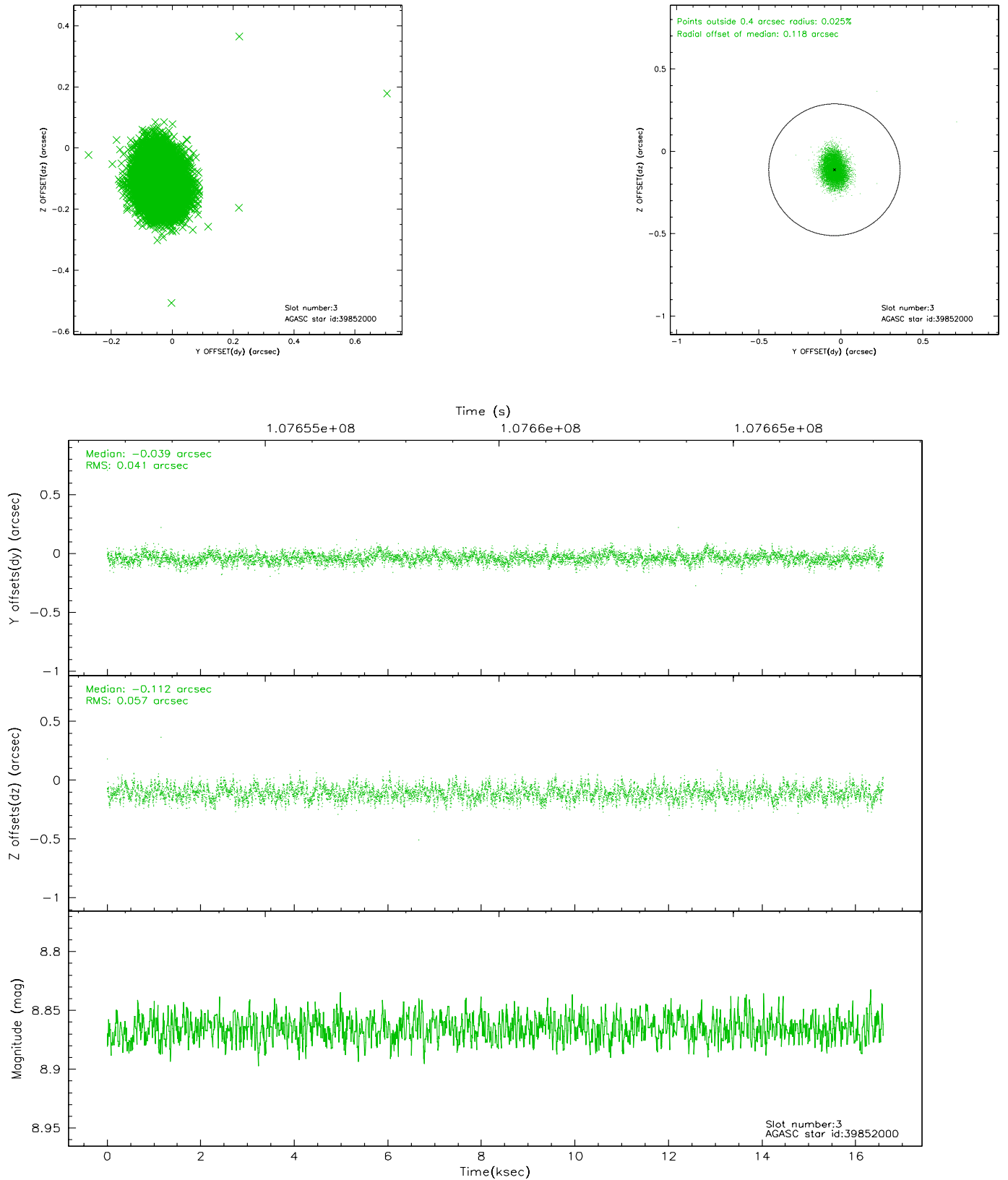


Slot Statistics

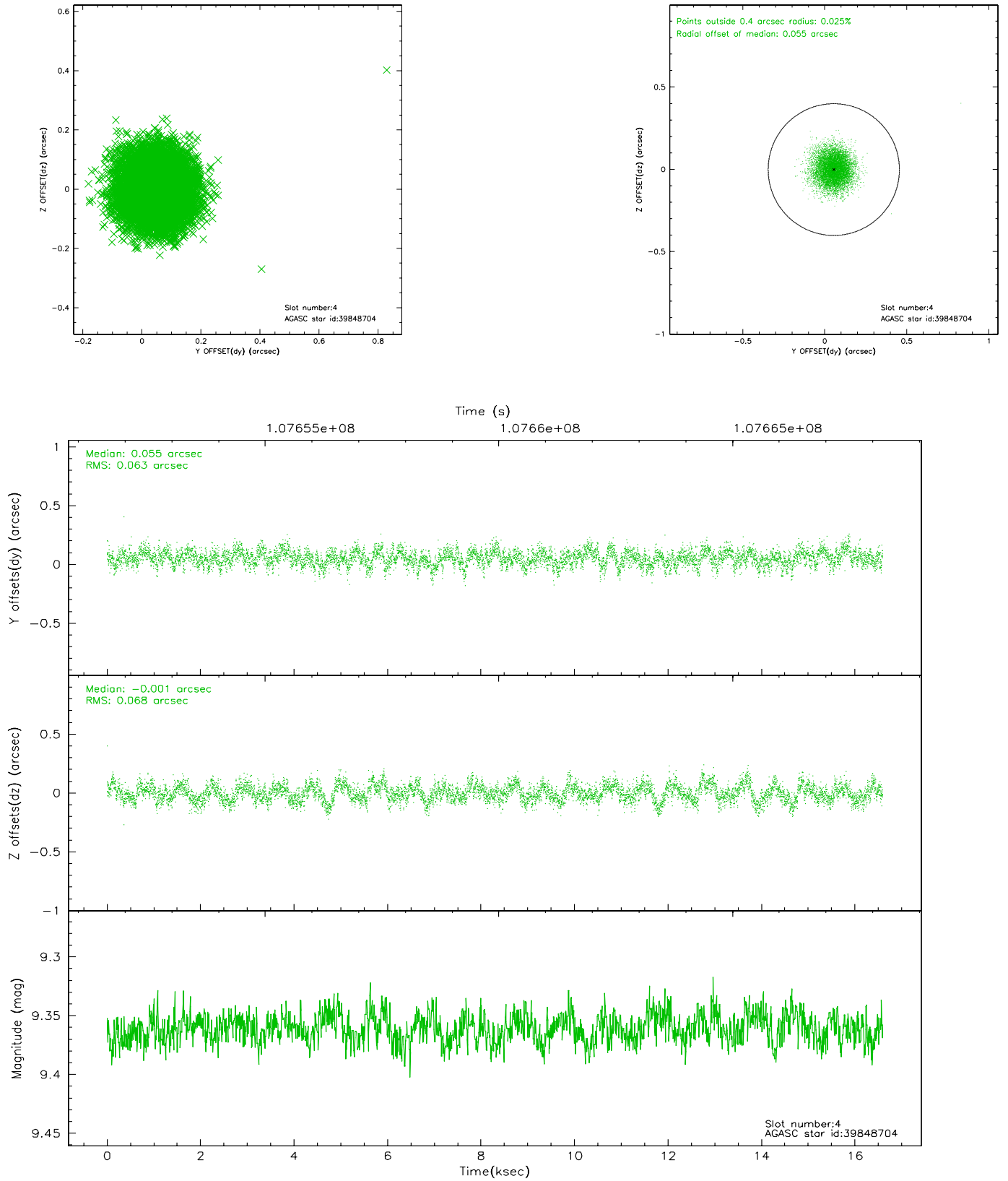
slot	status	id	mag	n_pts	med_dy	med_dz	dr1	dr2	ra	dec	mean_y	mean_z
0	FID	ACIS-S-3	7.36	4044	-0.080	-0.032	0.007	0.012	0.000000	0.000000	58.31	-1855.98
1	FID	ACIS-S-4	7.20	4047	-0.045	0.058	0.006	0.010	0.000000	0.000000	2158.47	181.39
2	FID	ACIS-S-5	7.24	4048	0.097	-0.015	0.006	0.010	0.000000	0.000000	-1807.26	175.25
3	GUIDE	39852000	8.87	8092	-0.039	-0.112	0.075	0.120	196.677623	7.146715	-801.11	-1679.24
4	GUIDE	39848704	9.36	8095	0.055	-0.001	0.099	0.157	196.315302	6.502866	1852.31	-1583.52
5	GUIDE	39853824	9.44	8089	-0.049	0.124	0.075	0.122	197.293822	6.828629	-967.26	797.07
6	GUIDE	39853600	9.28	8089	-0.055	0.047	0.075	0.123	197.267632	6.709572	-552.88	940.35
7	GUIDE	39847472	9.72	8087	0.089	-0.060	0.100	0.164	196.863666	6.535727	733.12	31.88

2.4 Star Slots

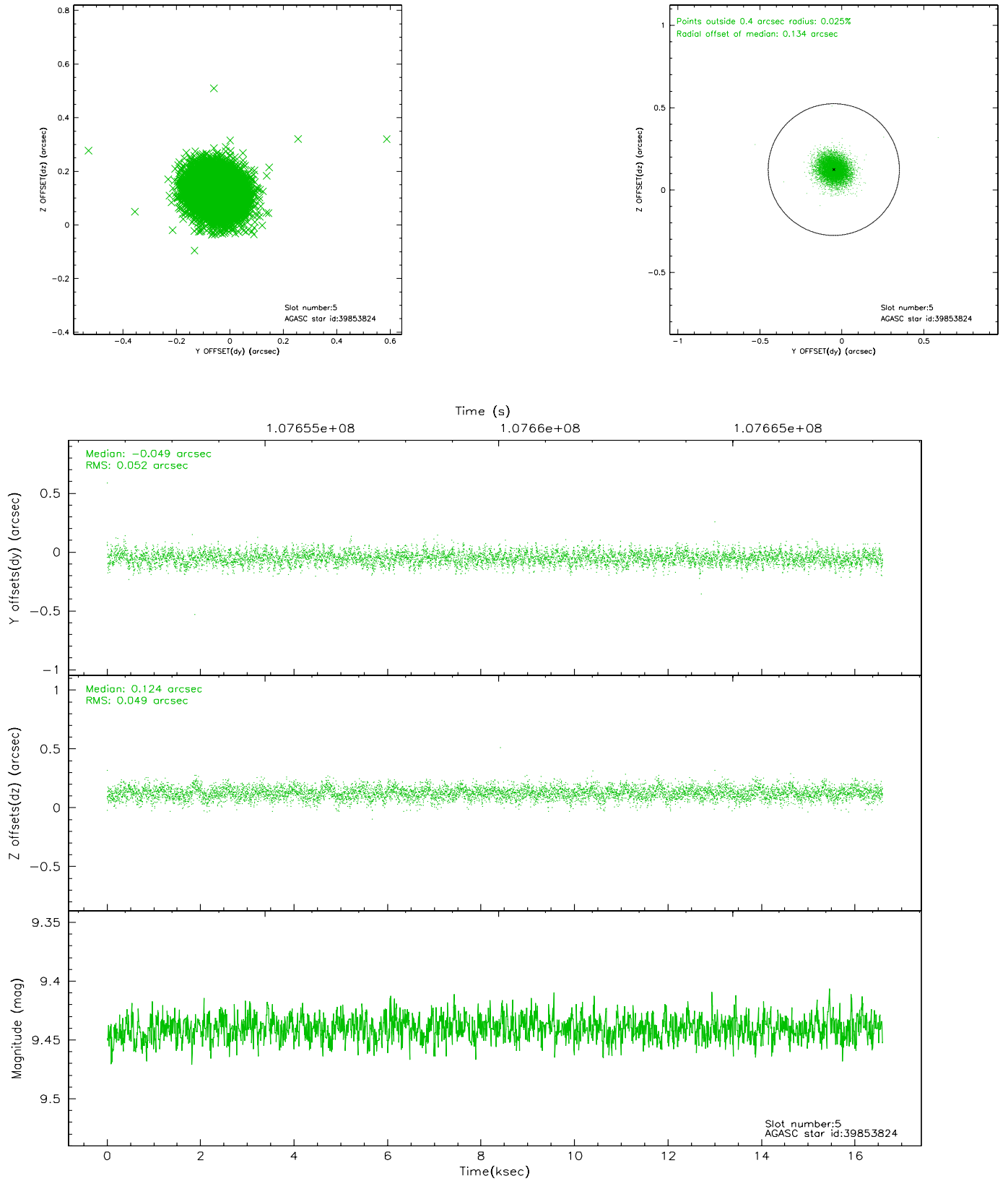
2.4.1 Slot 3



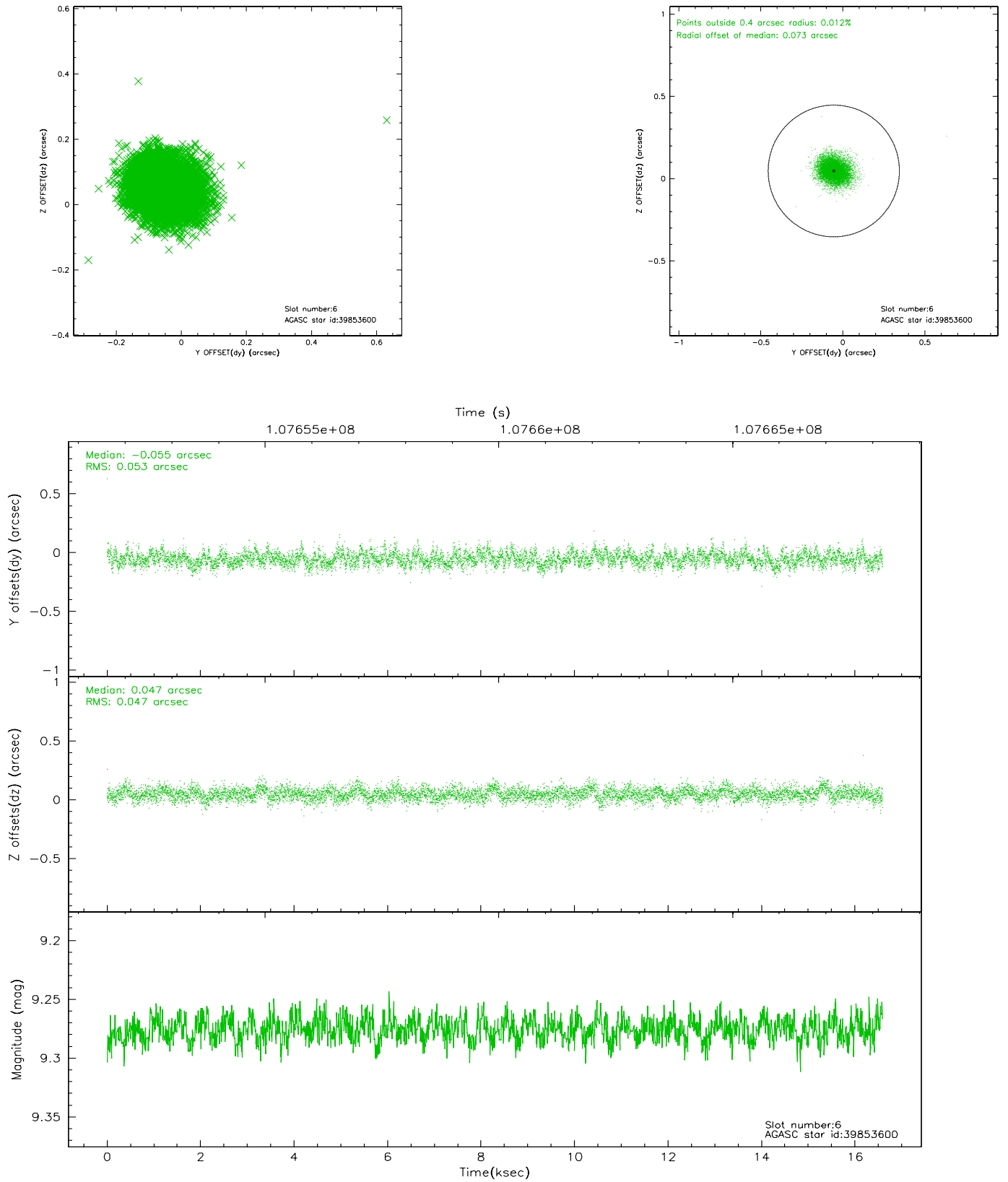
2.4.2 Slot 4



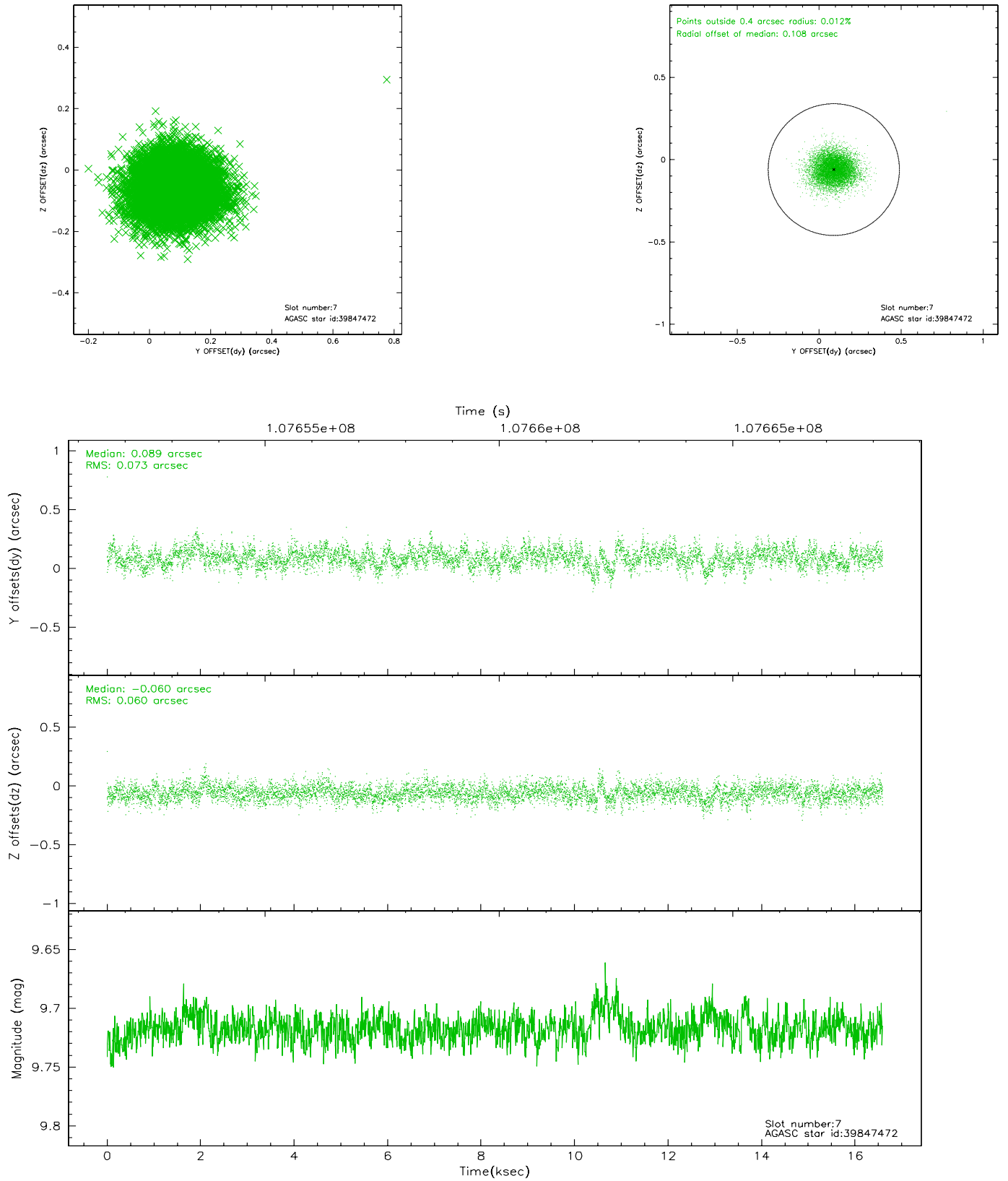
2.4.3 Slot 5



2.4.4 Slot 6

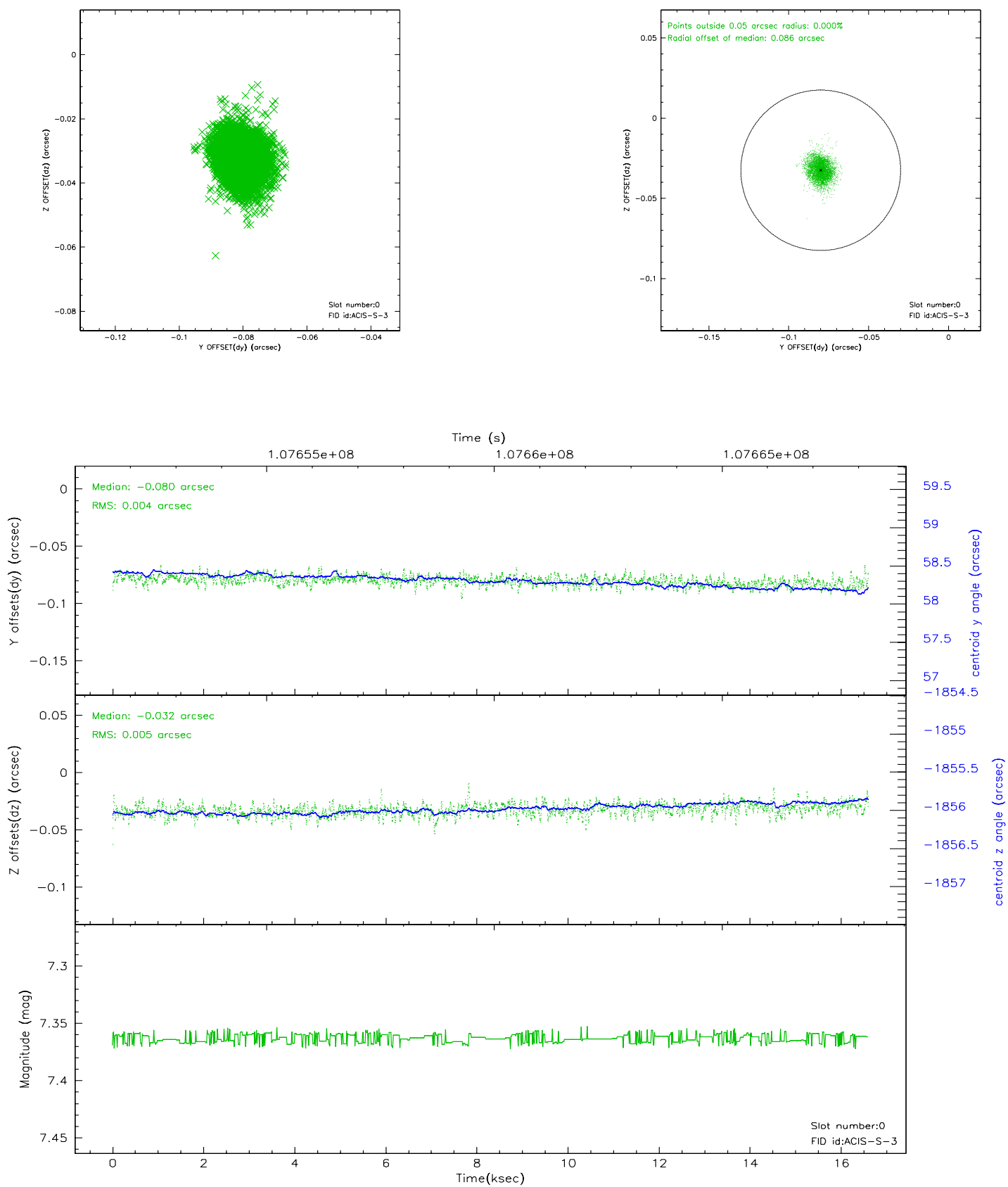


2.4.5 Slot 7

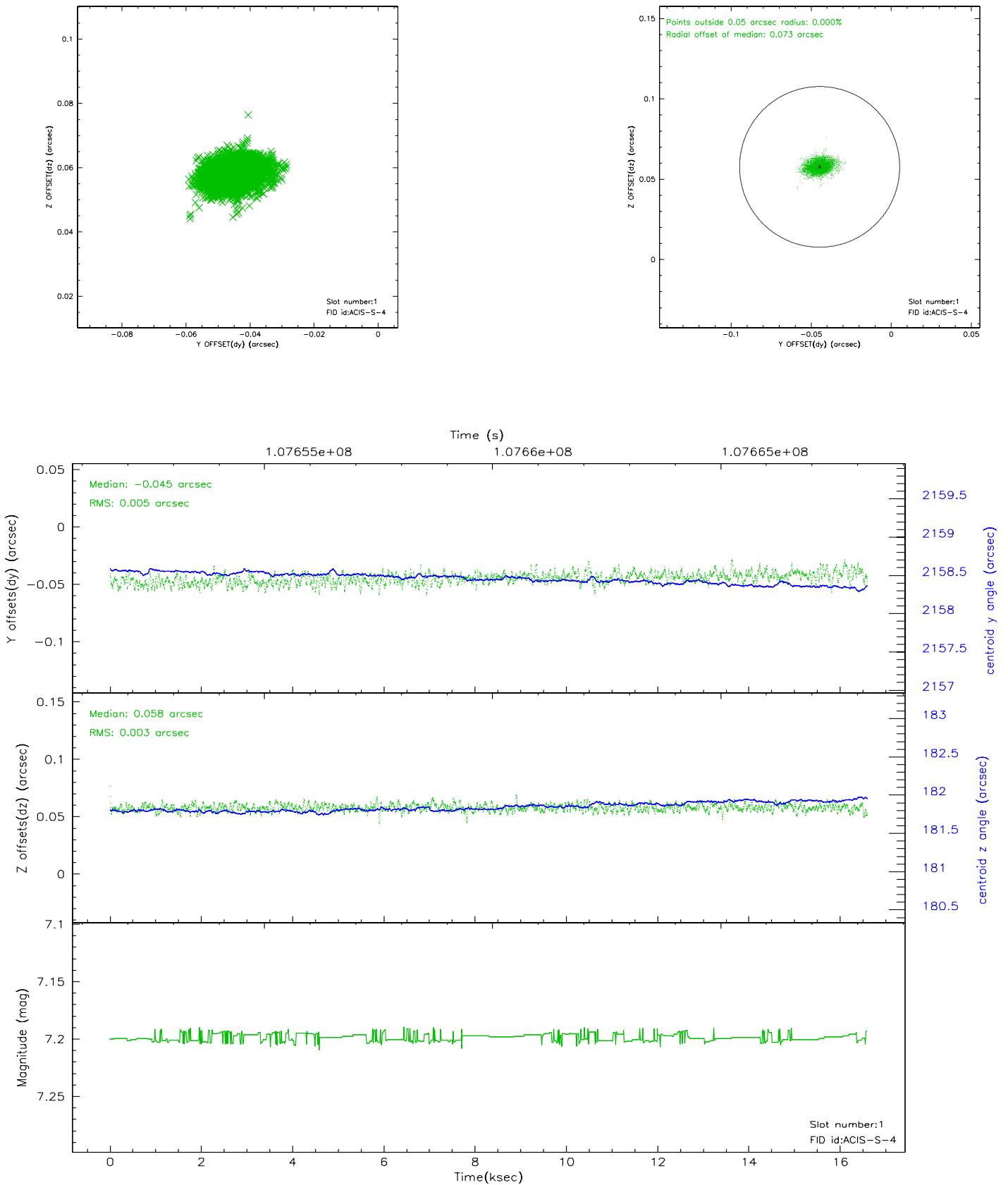


2.5 FID Slots

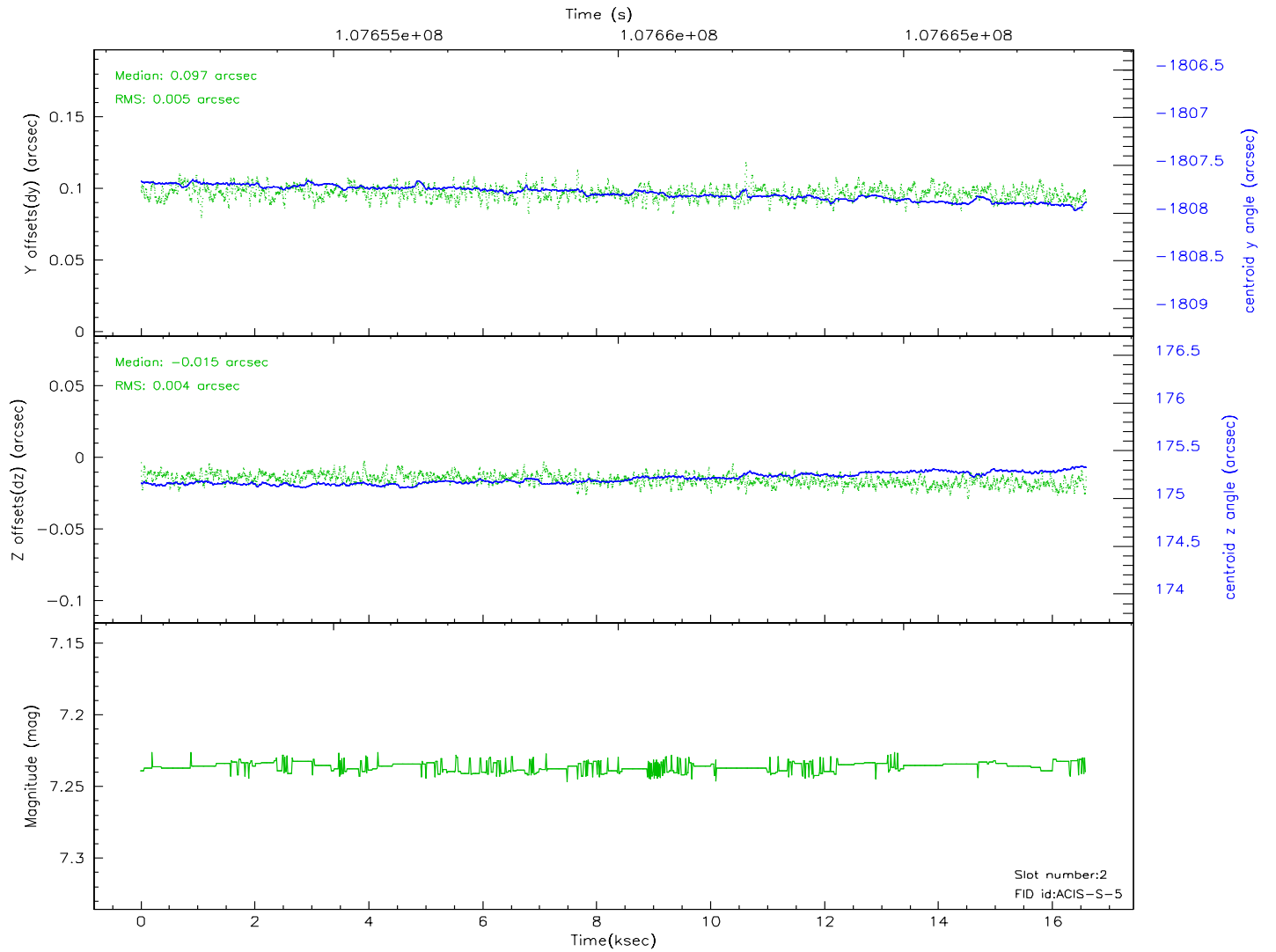
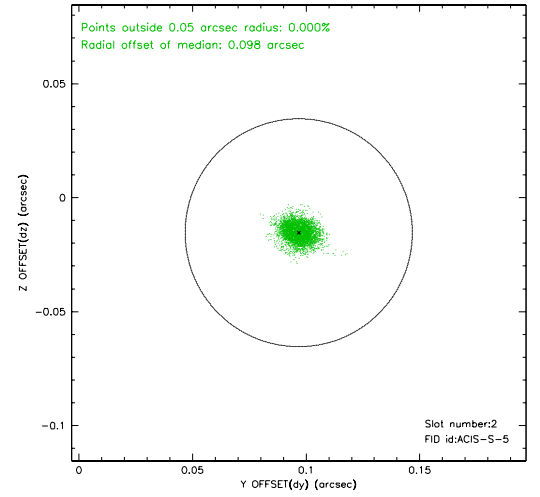
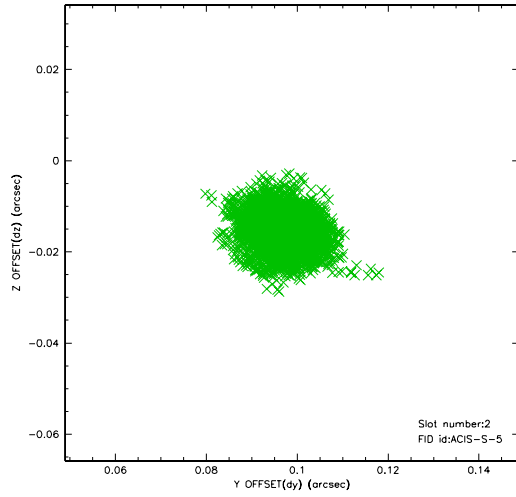
2.5.1 Slot 0



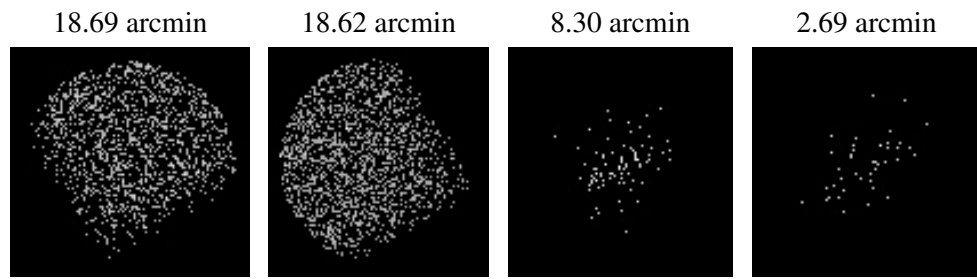
2.5.2 Slot 1



2.5.3 Slot 2



3 Point Sources



A Summary

A.1 Status

V&V Scientist	Jen Lauer
V&V Date (YYYY-MM-DD)	2006.11.27
V&V Edition	1
V&V Disposition and Status	OK
V&V Charge Time	16

A.2 Comments