

V&V Reference Report

L2 ASCDS Version : 8.1.1

Observation 1453 - L2 Version 3

Chandra X-Ray Center

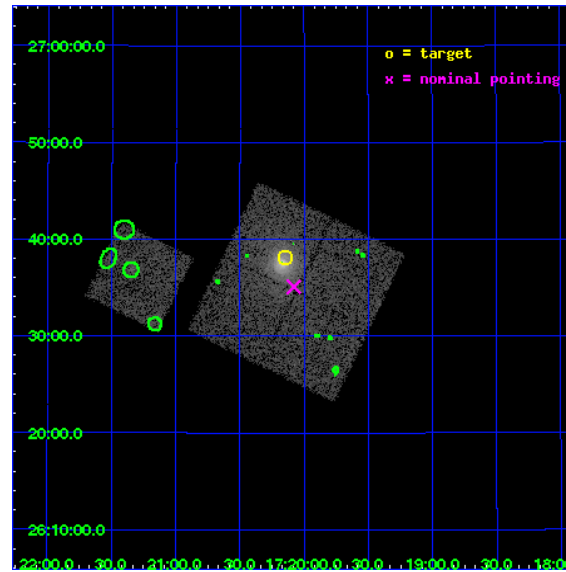
L2 Processing Date : Nov 20 2009

Contents

1	Front	2
2	OBI	3
2.1	OBI	3
2.1.1	Images	3
2.1.2	Bias	3
2.1.3	Parameters	4
2.1.4	Events	4
2.2	Compared Parameters	5
2.3	Aspect	6
2.4	Star Slots	9
2.4.1	Slot 3	9
2.4.2	Slot 4	10
2.4.3	Slot 5	11
2.4.4	Slot 6	12
2.4.5	Slot 7	13
2.5	FID Slots	14
2.5.1	Slot 0	14
2.5.2	Slot 1	15
2.5.3	Slot 2	16
3	Point Sources	17
A	Summary	18
A.1	Status	18
A.2	Comments	18

1 Front

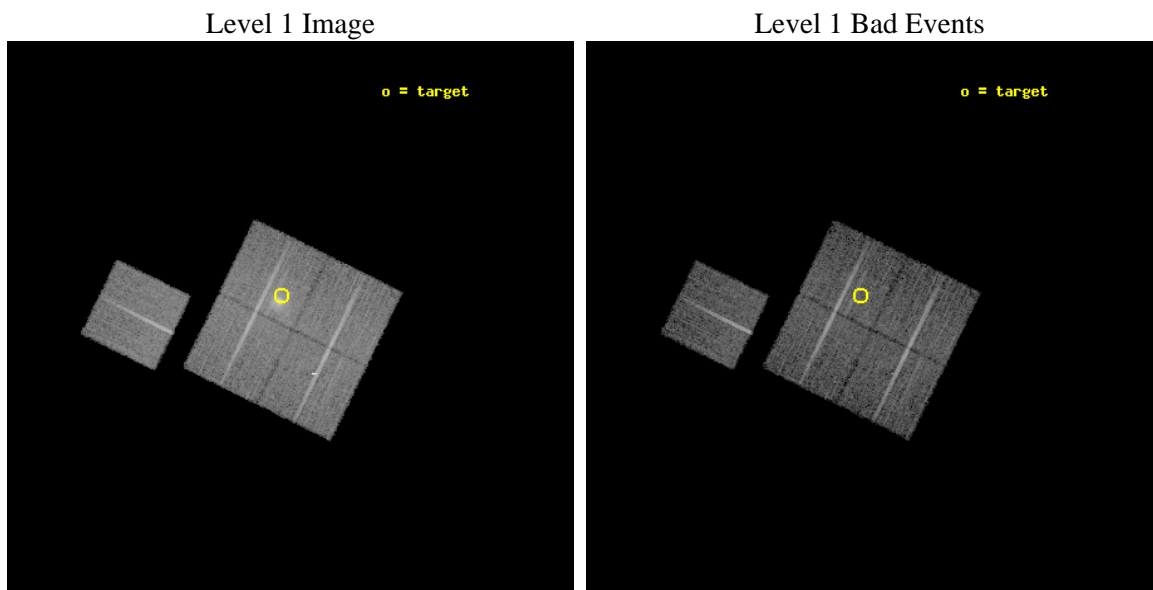
seq_num	800057	Sequence number
obs_id	1453	Observation id
title	DETERMINATION OF H0/Q0	Proposal title
observer	DR. LEON VANSPEYBROECK	Principal investigator
object	RX J1720.1+2638	Source name
dtcycle	0	
cycle	P	events from which exps? Prim/Second/Both
ra_targ	260.037083	Observer's specified target RA
dec_targ	26.635	Observer's specified target Dec
ra_nom	260.01971431882	Nominal RA
dec_nom	26.584935263305	Nominal Dec
roll_nom	296.12104771531	Nominal Roll
revision	3	Processing version of data
ontime	7890.5865852237	Sum of GTIs [s]
livetime	7790.6712267407	Livetime [s]
ontime0	7890.750745222	Sum of GTIs [s]
ontime1	7890.7097052187	Sum of GTIs [s]
ontime2	7890.6686652228	Sum of GTIs [s]
ontime3	7890.5865852237	Sum of GTIs [s]
ontime6	7887.3866450787	Sum of GTIs [s]
l2events	51799	Number of level 2 events



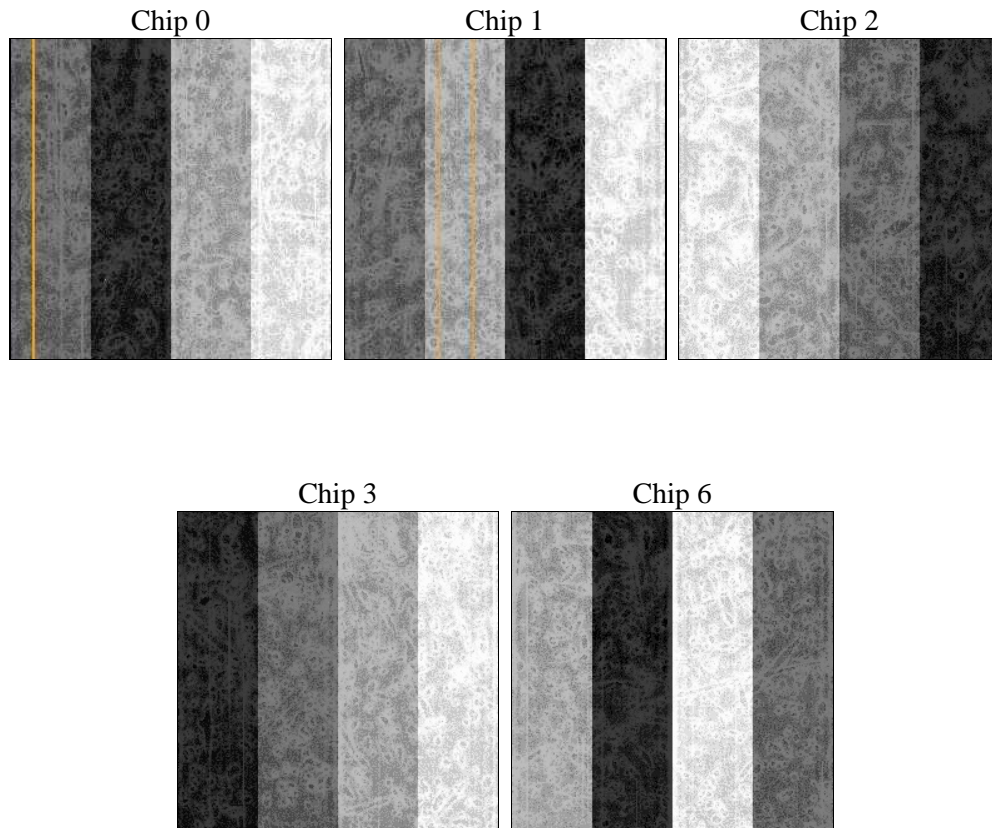
2 OBI

2.1 OBI

2.1.1 Images



2.1.2 Bias



2.1.3 Parameters

obi_num	0	Obi number	sched_exp_time	9160.000000	Scheduled observation exposure time
ascdsver	8.1.1	ASCDS version number	ontime	7890.5865852237	Sum of GTIs [s]
caldsver	4.1.4	 	ontime0	7890.750745222	Sum of GTIs [s]
date	2009-11-20T11:12:22	Date and time of file creation	ontime1	7890.7097052187	Sum of GTIs [s]
revision	3	Processing version of data	ontime2	7890.6686652228	Sum of GTIs [s]
			ontime3	7890.5865852237	Sum of GTIs [s]
			ontime6	7887.3866450787	Sum of GTIs [s]
			l1events	368428	Number of level 1 events

2.1.4 Events

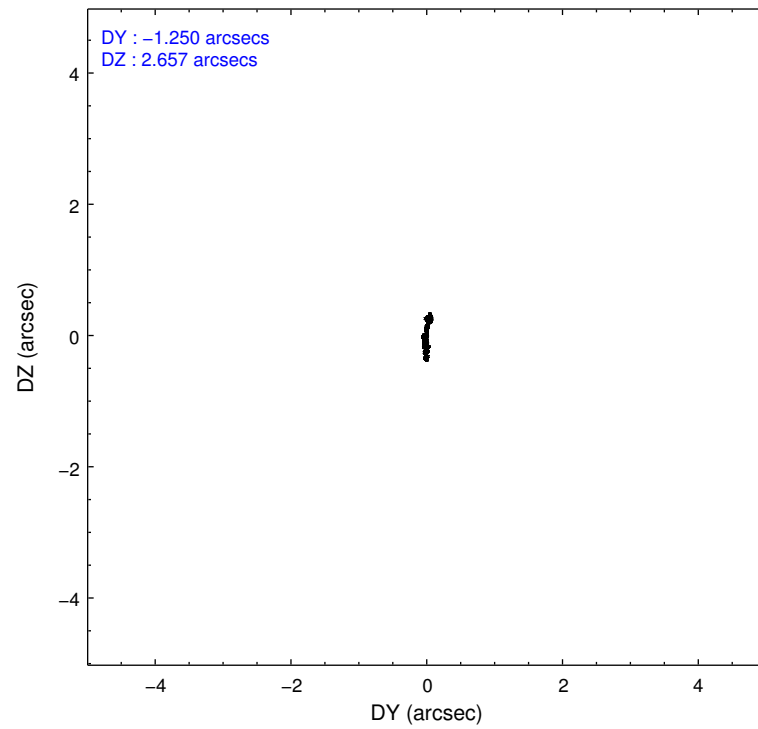
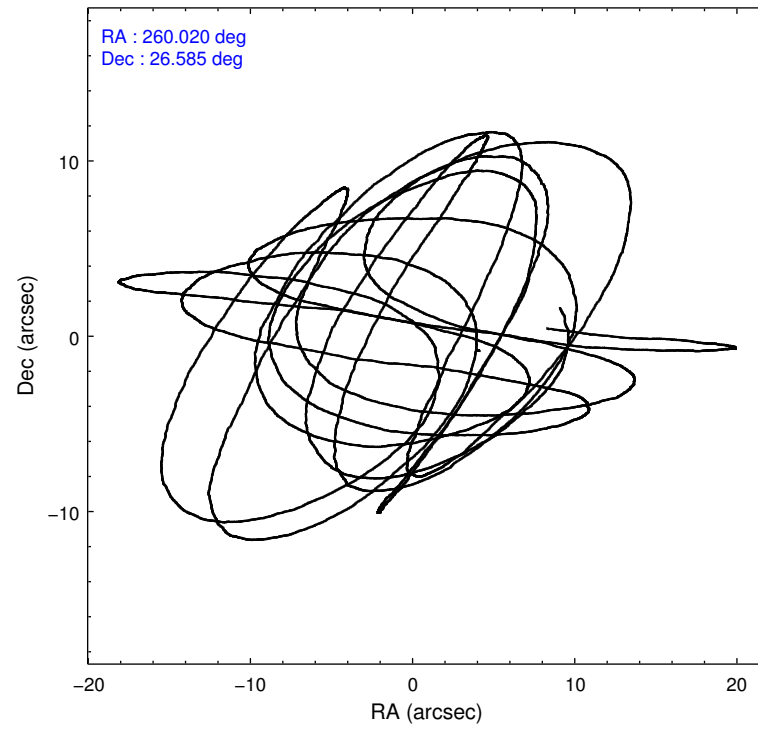
	ccd 0	ccd 1	ccd 2	ccd 3	ccd 6
level 1 events	72237	70098	70752	84835	70506
rejected events	60964	62323	63433	62742	63621
rejected %	84%	88%	89%	73%	90%

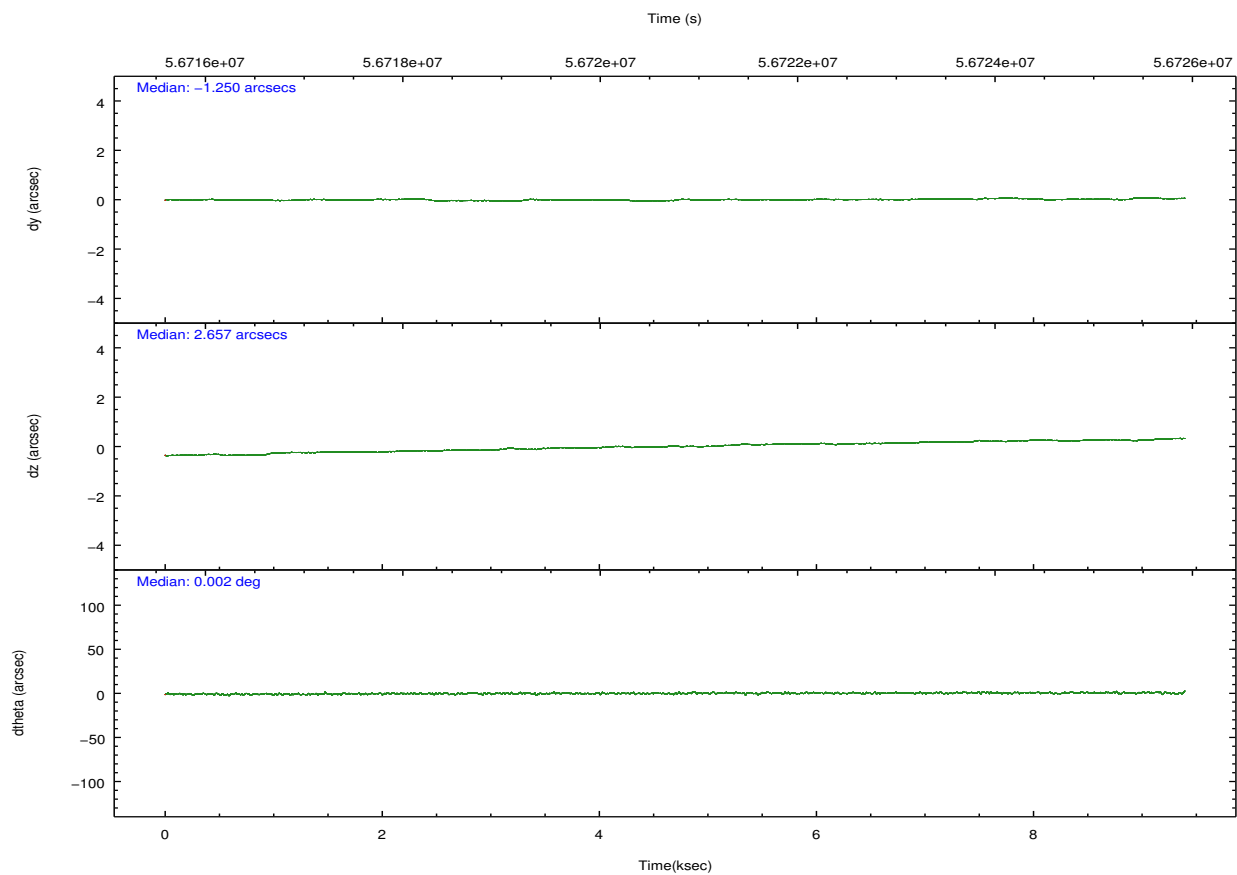
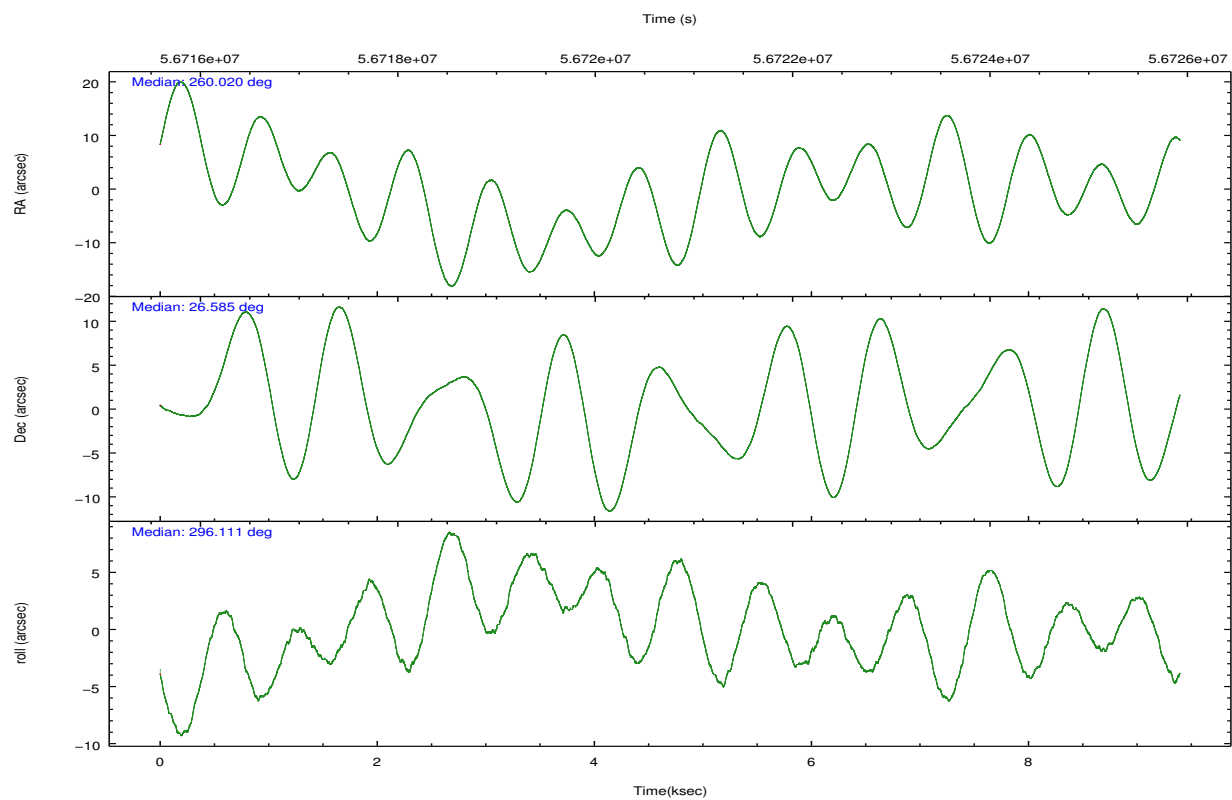
	ccd 0	ccd 1	ccd 2	ccd 3	ccd 6
grade 0 events	5097	2052	2035	10282	1471
	7%	2%	2%	12%	2%
grade 1 events	95	16	14	43	15
	0%	0%	0%	0%	0%
grade 2 events	3330	2806	2822	8251	2701
	4%	4%	3%	9%	3%
grade 3 events	607	579	436	730	460
	0%	0%	0%	0%	0%
grade 4 events	561	551	442	648	424
	0%	0%	0%	0%	0%
grade 5 events	1389	1407	1195	1355	1378
	1%	2%	1%	1%	1%
grade 6 events	1680	1789	1586	2193	1831
	2%	2%	2%	2%	2%
grade 7 events	59478	60898	62222	61333	62226
	82%	86%	87%	72%	88%

2.2 Compared Parameters

Parameter	Planned	Actual	Parameter	Planned	Actual
Instrument	ACIS	ACIS	Obspar format version number	6	6
Detector	ACIS-01236	ACIS-01236	Obspar file type	PREDICTED	ACTUAL
Grating	NONE	NONE	Obspar update status	NONE	UPDATED
Data mode	FAINT	FAINT	Number of optional ACIS chips dropped	0	0
Observation mode	POINTING	POINTING	On-chip summing requested	N	N
Pointing RA	259.994631	260.0197143188165	Subarray requested	NONE	NONE
Pointing Dec	26.600990	26.58493526330491	Alternating exposures requested	N	N
Pointing Roll	295.923603	296.1210477153053	Primary exposure time	0.000000	3.2
SIM focus pos (mm)	-0.782348	-0.7809083437167272			
SIM defocus (mm)	0	0.001439871863259334			
SIM translation stage pos (mm)	-233.592463	-233.5874344608287			
SIM translation stage offset (mm)	0	-0.005018542100998502			
Observation start time	56716294.184000	56716058.780625			
Observation start date	1999-10-19T10:30:30	1999-10-19T10:27:38			
Observation end time	56725454.184000	56726076.105985			
Observation end date	1999-10-19T13:03:10	1999-10-19T13:14:36			
Read mode	TIMED	TIMED			

2.3 Aspect



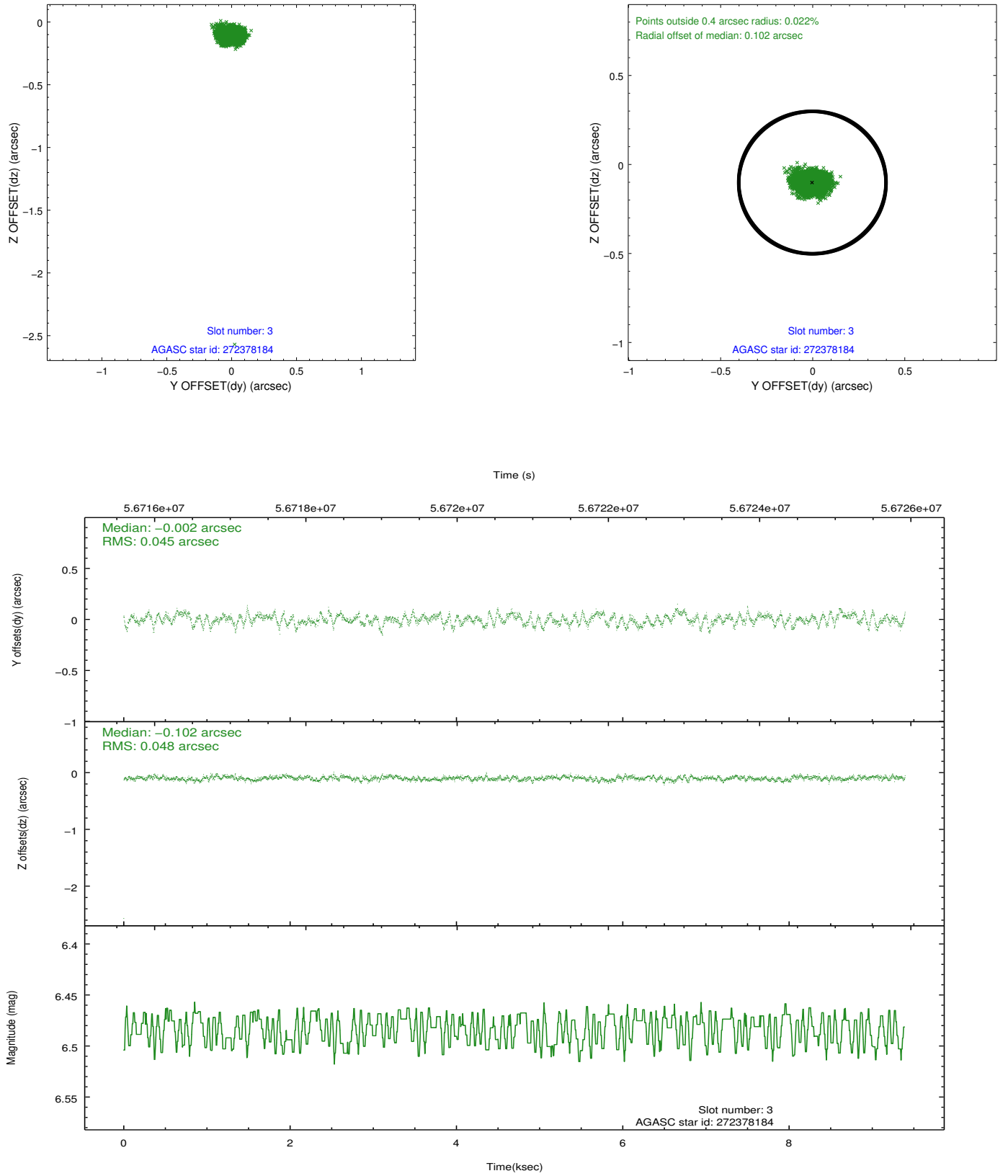


Slot Statistics

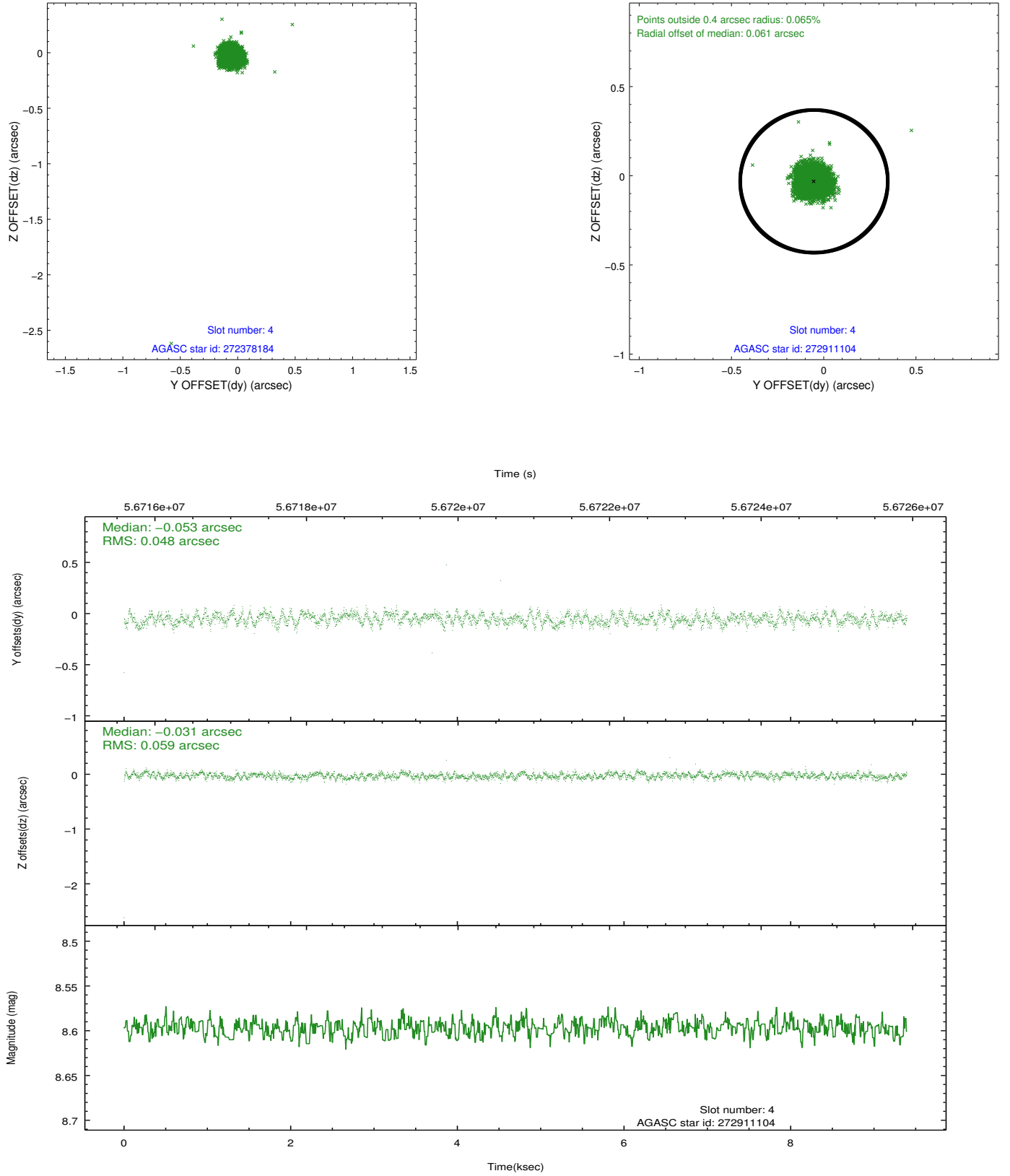
slot	status	id	mag	n_pts	med_dy	med_dz	dr1	dr2	ra	dec	mean_y	mean_z
0	FID	ACIS-I-2	7.20	4584	-0.056	0.030	0.010	0.017	0.000000	0.000000	-753.13	-832.21
1	FID	ACIS-I-4	7.22	4584	0.129	0.030	0.006	0.011	0.000000	0.000000	2161.15	1073.67
2	FID	ACIS-I-5	7.23	4584	-0.173	0.008	0.009	0.015	0.000000	0.000000	-1806.67	1071.99
3	GUIDE	272378184	6.48	4584	-0.002	-0.102	0.057	0.094	259.624547	25.808001	2041.80	-2326.80
4	GUIDE	272911104	8.60	4584	-0.053	-0.031	0.069	0.108	260.699049	26.523786	1236.11	1920.66
5	GUIDE	272905040	9.12	4582	-0.091	0.053	0.065	0.110	260.363769	26.943354	-592.52	1604.49
6	GUIDE	272907776	9.24	4576	0.042	0.118	0.075	0.122	260.539378	26.537075	969.98	1478.70
7	GUIDE	272370688	9.38	4575	0.105	-0.039	0.080	0.127	260.078386	26.214743	1368.86	-364.97

2.4 Star Slots

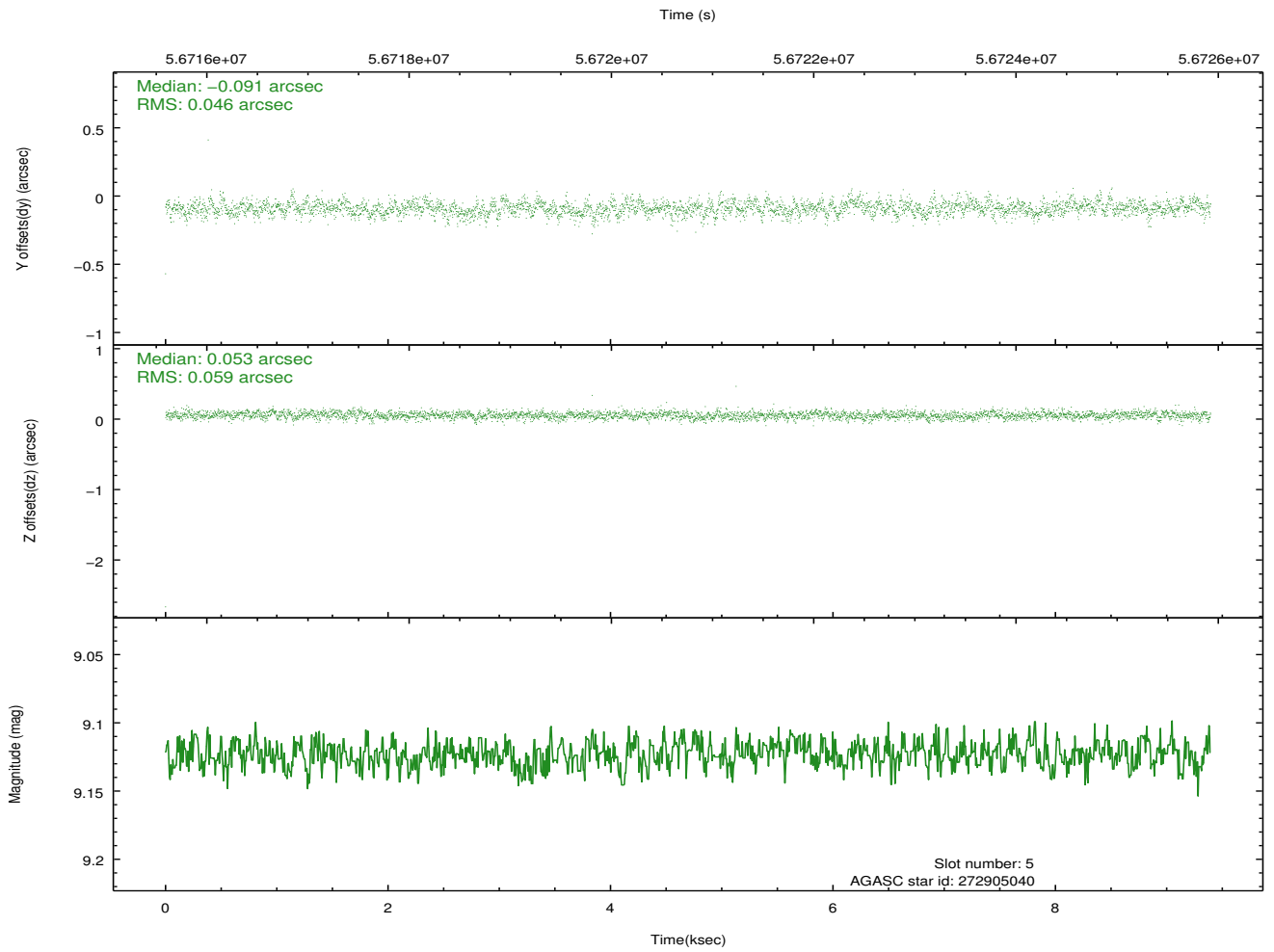
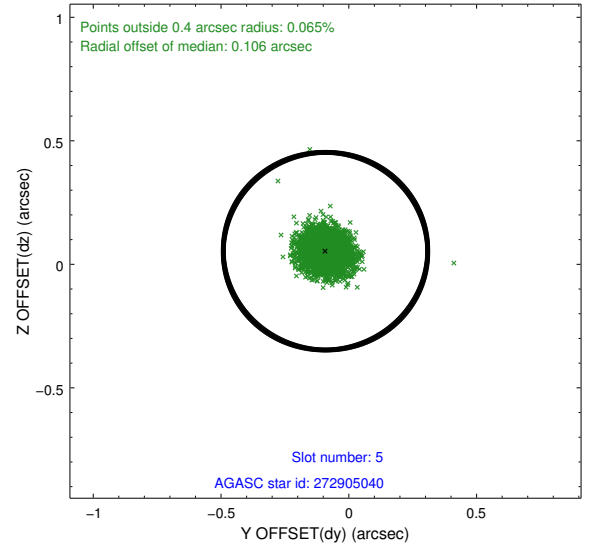
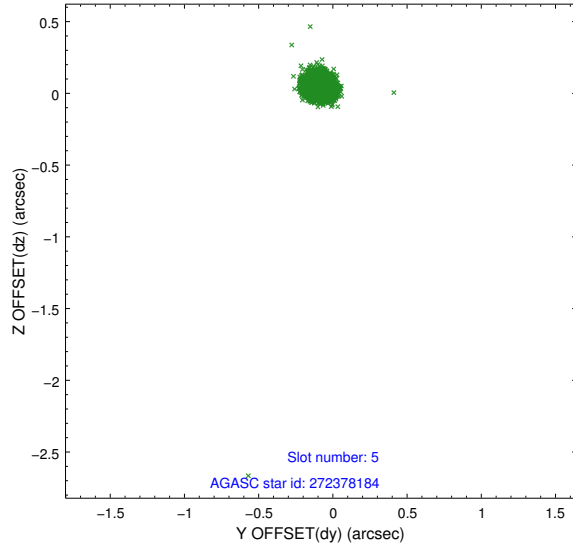
2.4.1 Slot 3



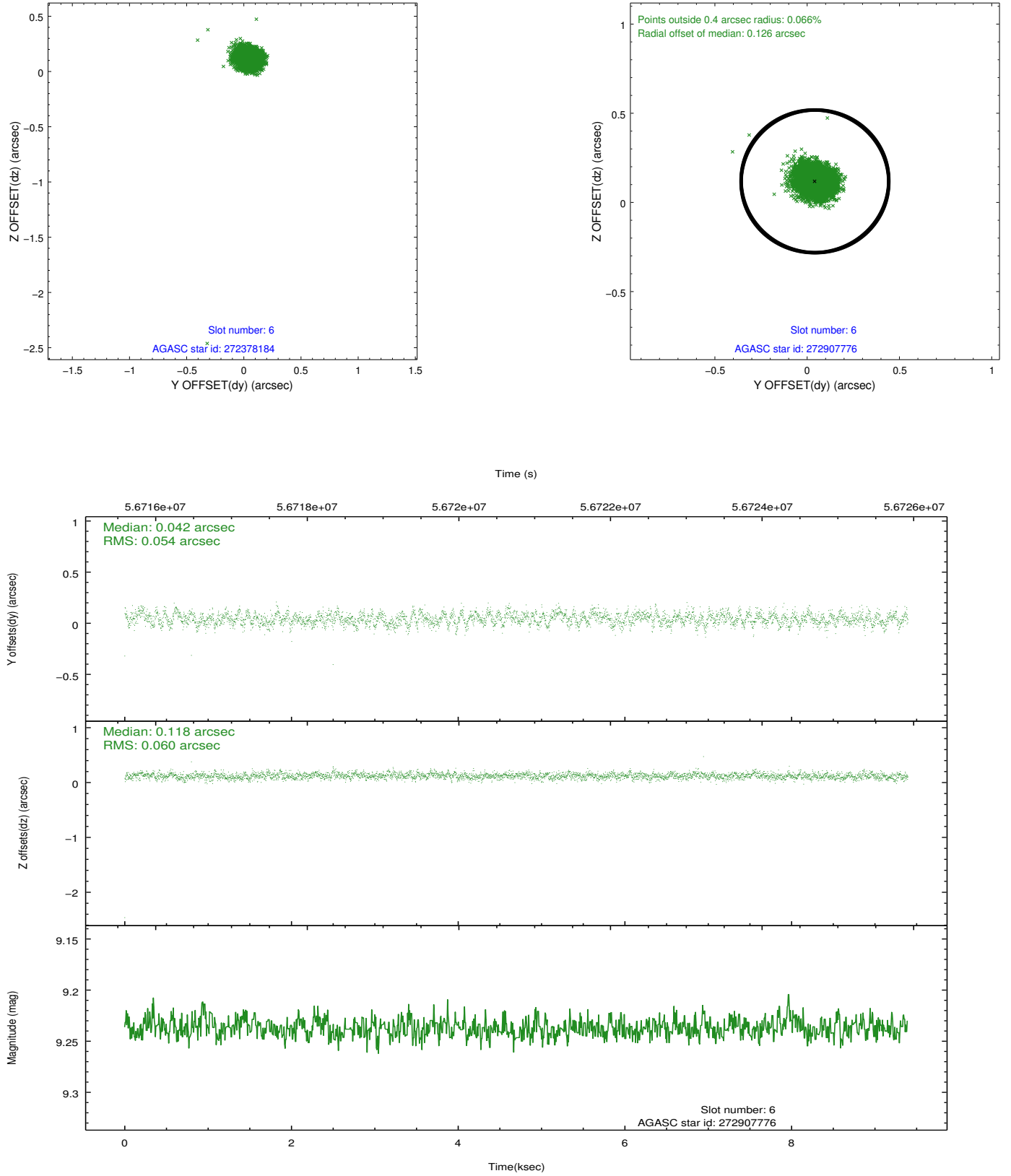
2.4.2 Slot 4



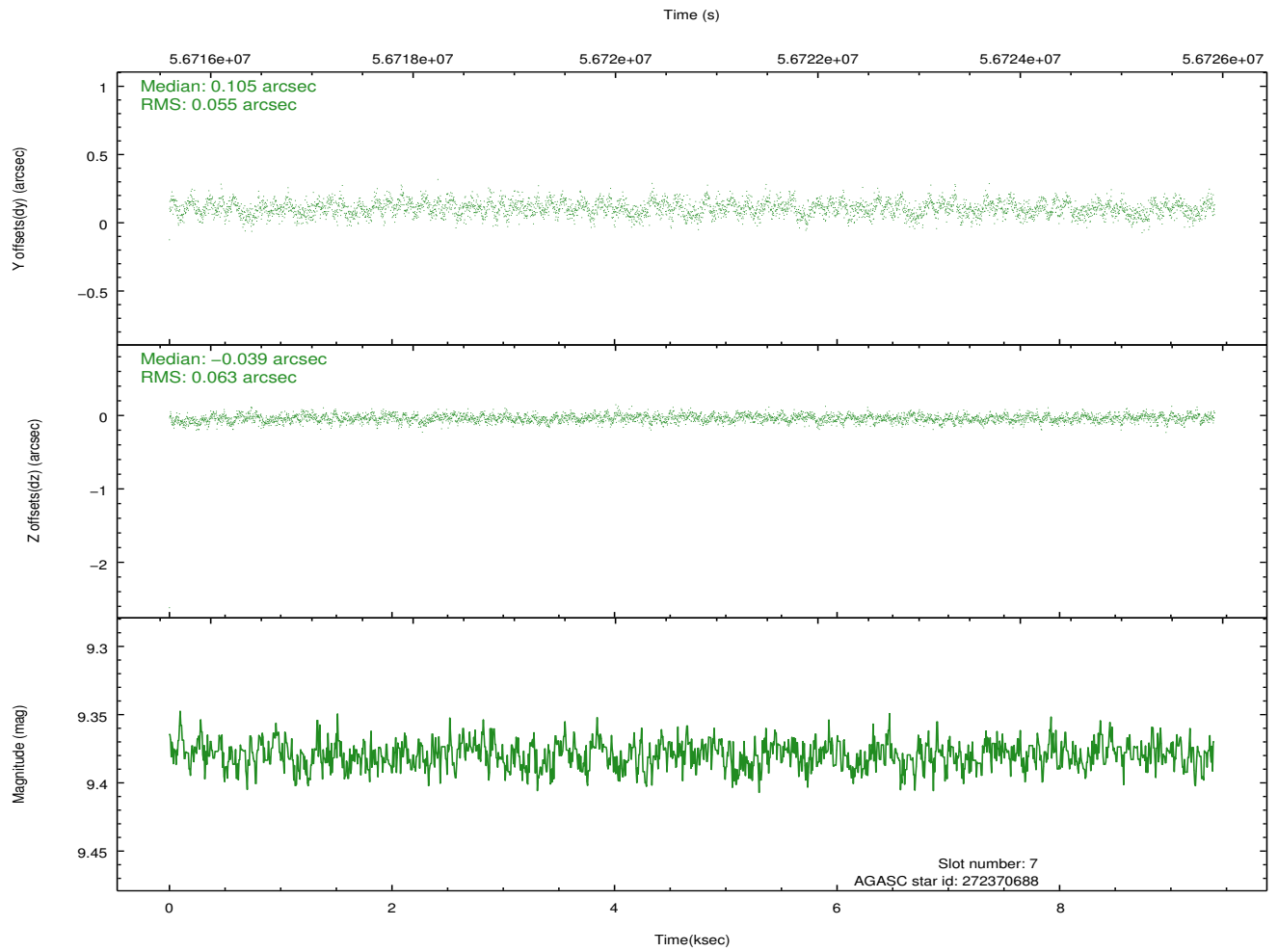
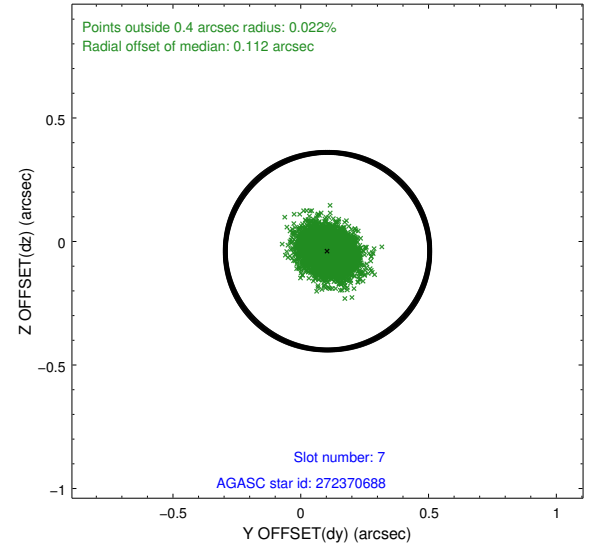
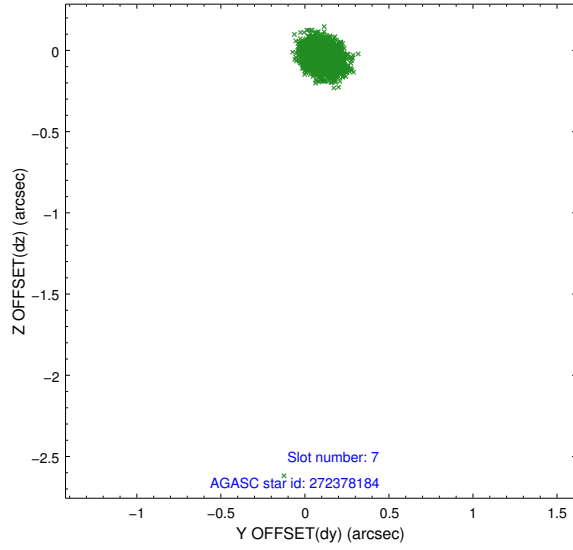
2.4.3 Slot 5



2.4.4 Slot 6

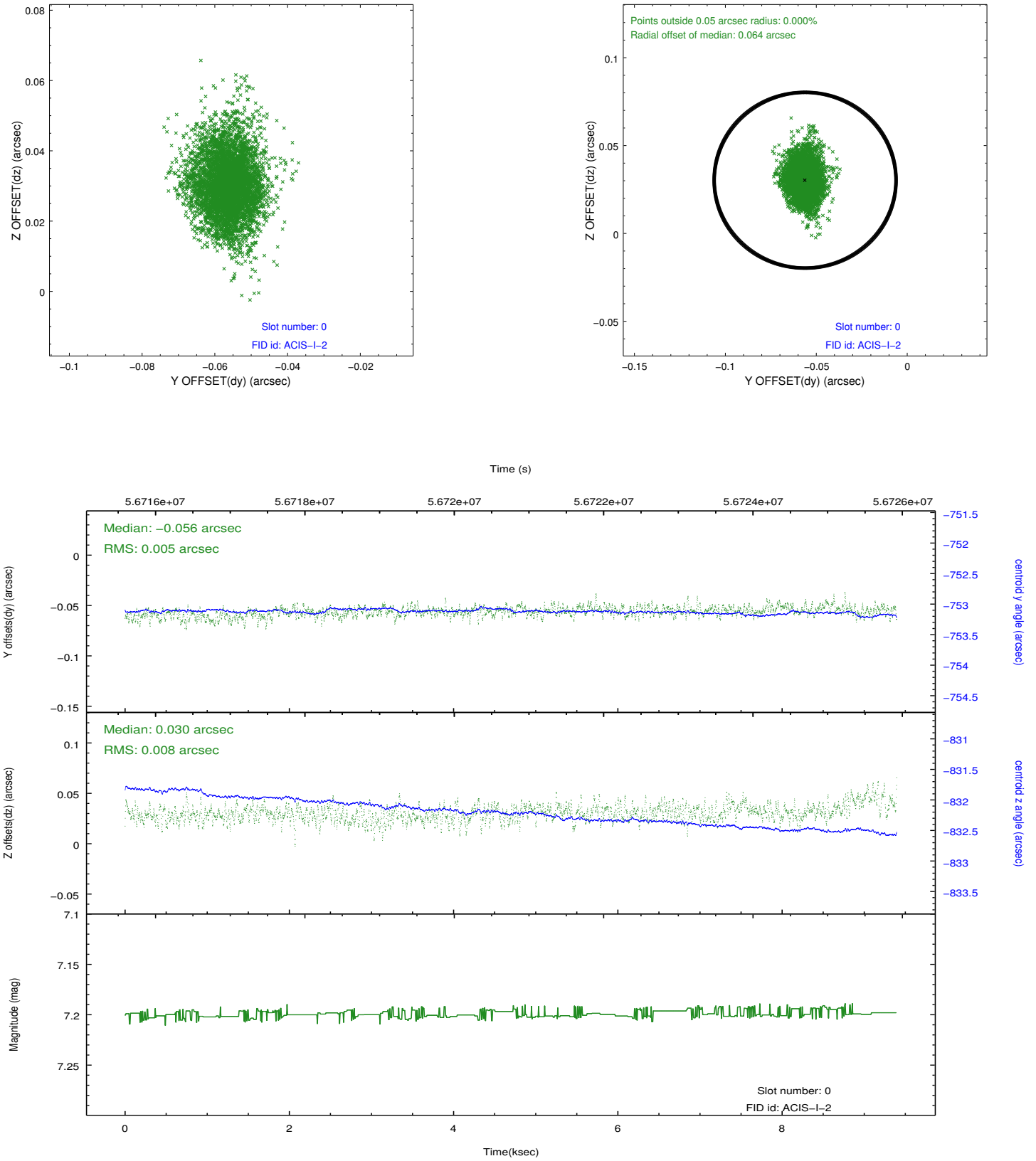


2.4.5 Slot 7

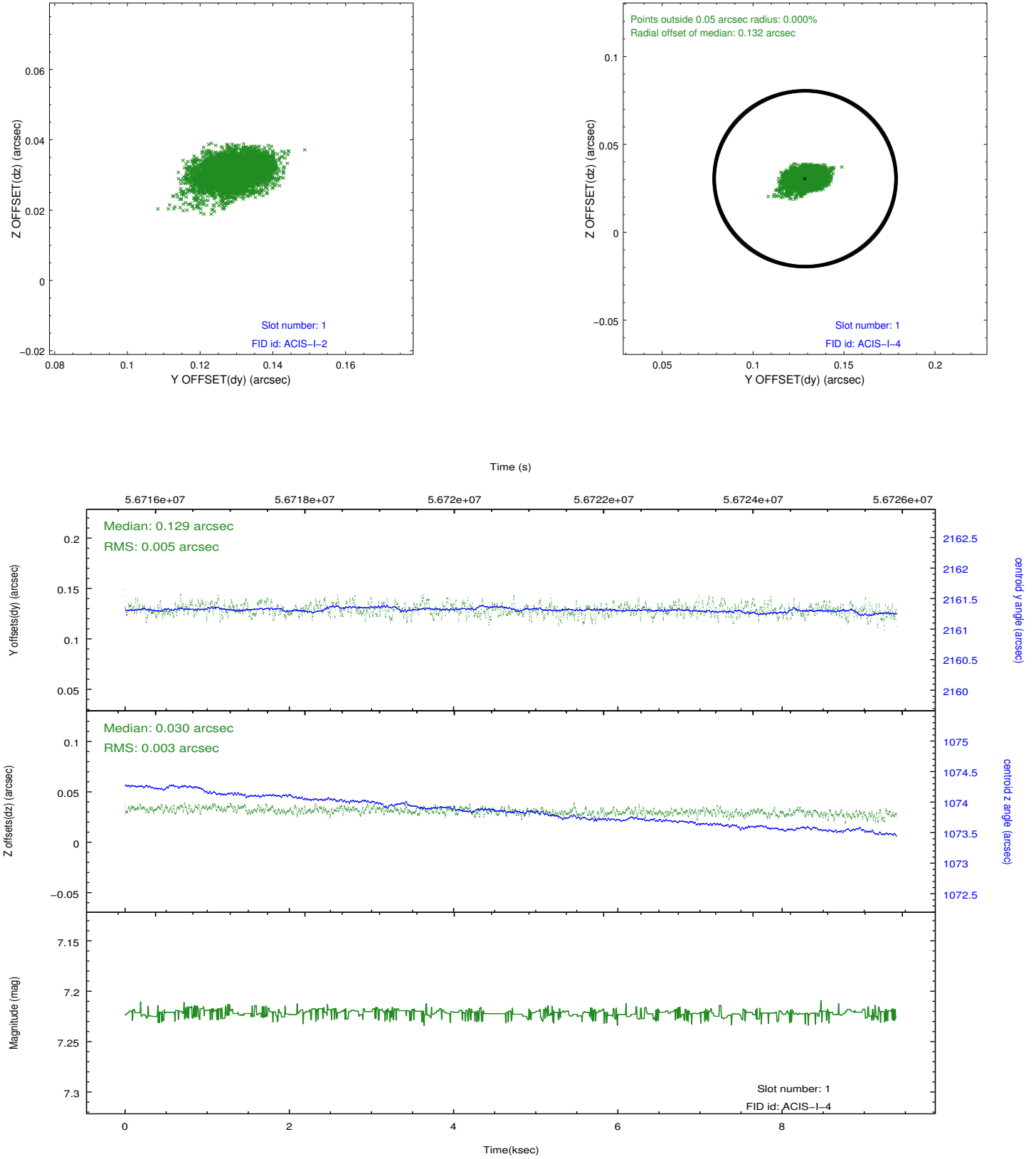


2.5 FID Slots

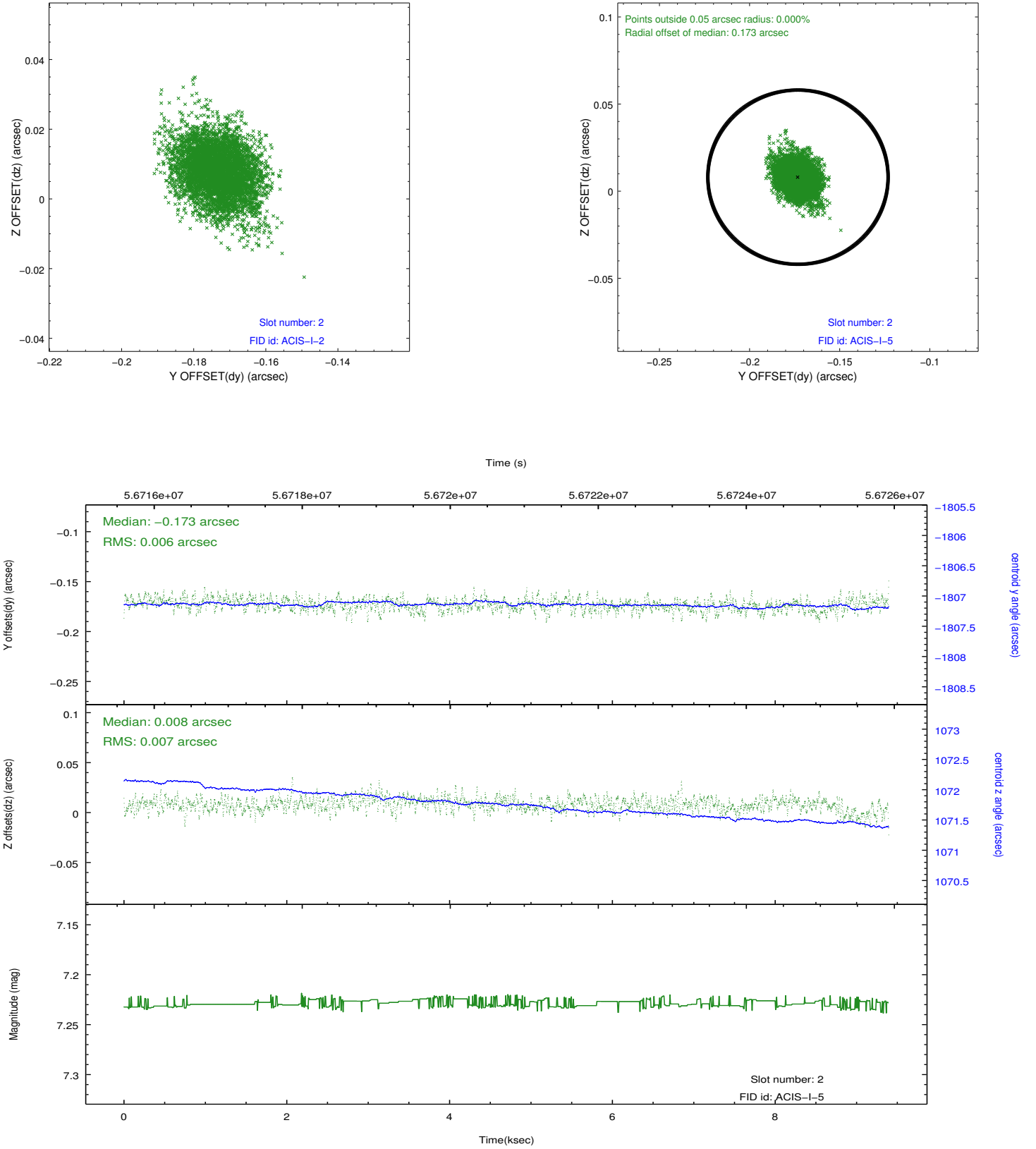
2.5.1 Slot 0



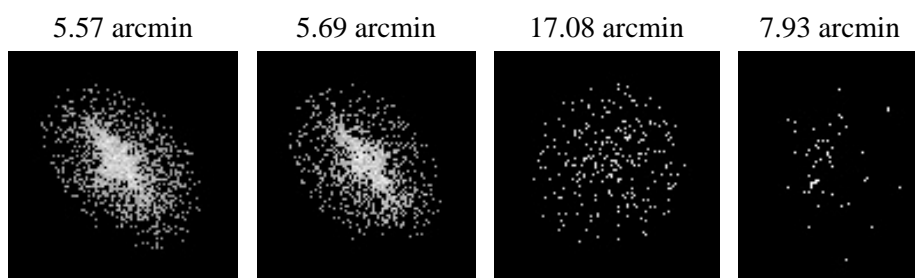
2.5.2 Slot 1



2.5.3 Slot 2



3 Point Sources



A Summary

A.1 Status

V&V Scientist	Joy Nichols
V&V Date (YYYY-MM-DD)	2010.01.22
V&V Edition	1
V&V Disposition and Status	OK
V&V Charge Time	7.891

A.2 Comments

The focal plane temperature is approximately -110C during this observation. This reprocessing of the data applies no CTI correction because none is available for this temperature at present.

The ACIS CTI correction has not been calibrated at this temperature, because it was early in the mission, and ACIS had not yet been lowered to the standard -119.7 C. Both front and back illuminated chips are affected. However a T_GAIN correction has been applied to the BI chips (ACIS-5 and ACIS-7) data included here.

The ACIS spectral response calibration is less accurate at these warmer temperatures than it is at -119.7 C. Users whose science objectives depend on the most accurate spectral response (ie: fitting line-rich spectra) may notice an effect. Users whose science objectives do not depend on the most accurate spectral response should not notice an effect.