

V&V Reference Report

L2 ASCDS Version : 8.4.3

Observation 13603 - L2 Version 2
Chandra X-Ray Center

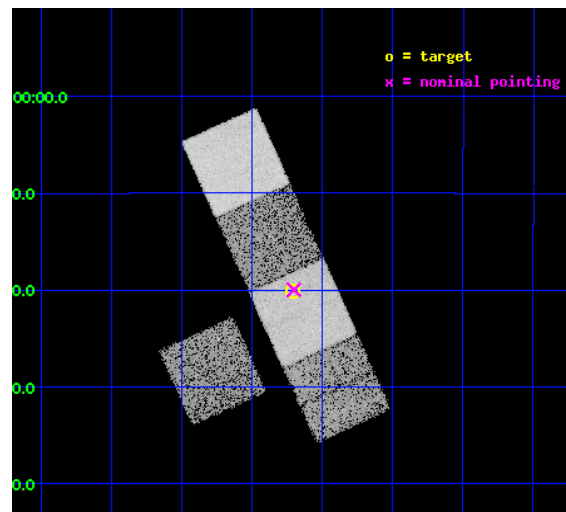
L2 Processing Date : Feb 28 2012

Contents

1	Front	2
2	OBI	3
2.1	OBI	3
2.1.1	Images	3
2.1.2	Bias	3
2.1.3	Parameters	4
2.1.4	Events	4
2.2	Compared Parameters	5
2.3	Aspect	6
2.4	Star Slots	9
2.4.1	Slot 3	9
2.4.2	Slot 4	10
2.4.3	Slot 5	11
2.4.4	Slot 6	12
2.4.5	Slot 7	13
2.5	FID Slots	14
2.5.1	Slot 0	14
2.5.2	Slot 1	15
2.5.3	Slot 2	16
A	Summary	17
A.1	Status	17
A.2	Comments	17

1 Front

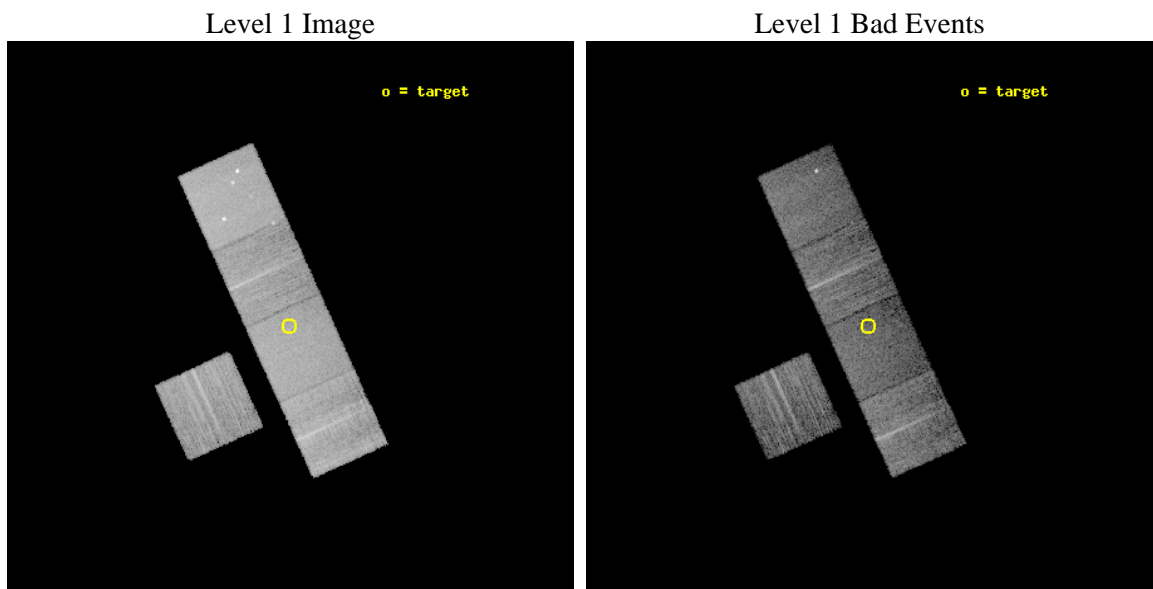
seq_num	200758	Sequence number
obs_id	13603	Observation id
title	Are Convective Dynamos Super-Saturated at High Rotation Velocities?	
observer	Prof. Edo Berger	Principal investigator
object	GJ3622	Source name
dtcycle	0	
cycle	P	events from which exps? Prim/Second/Both
ra_targ	162.0525	Observer's specified target RA [deg]
dec_targ	-11.335611	Observer's specified target Dec [deg]
ra_nom	162.05083361981	Nominal RA [deg]
dec_nom	-11.333085466142	Nominal Dec [deg]
roll_nom	65.556305293496	Nominal Roll [deg]
revision	2	Processing version of data
ontime	10760.100082755	Sum of GTIs [s]
livetime	10619.511453703	Livetime [s]
ontime3	10760.100082755	Sum of GTIs [s]
ontime5	10760.100082755	Sum of GTIs [s]
ontime6	10760.100082755	Sum of GTIs [s]
ontime7	10760.100082755	Sum of GTIs [s]
ontime8	10760.100082755	Sum of GTIs [s]
l2events	112678	Number of level 2 events



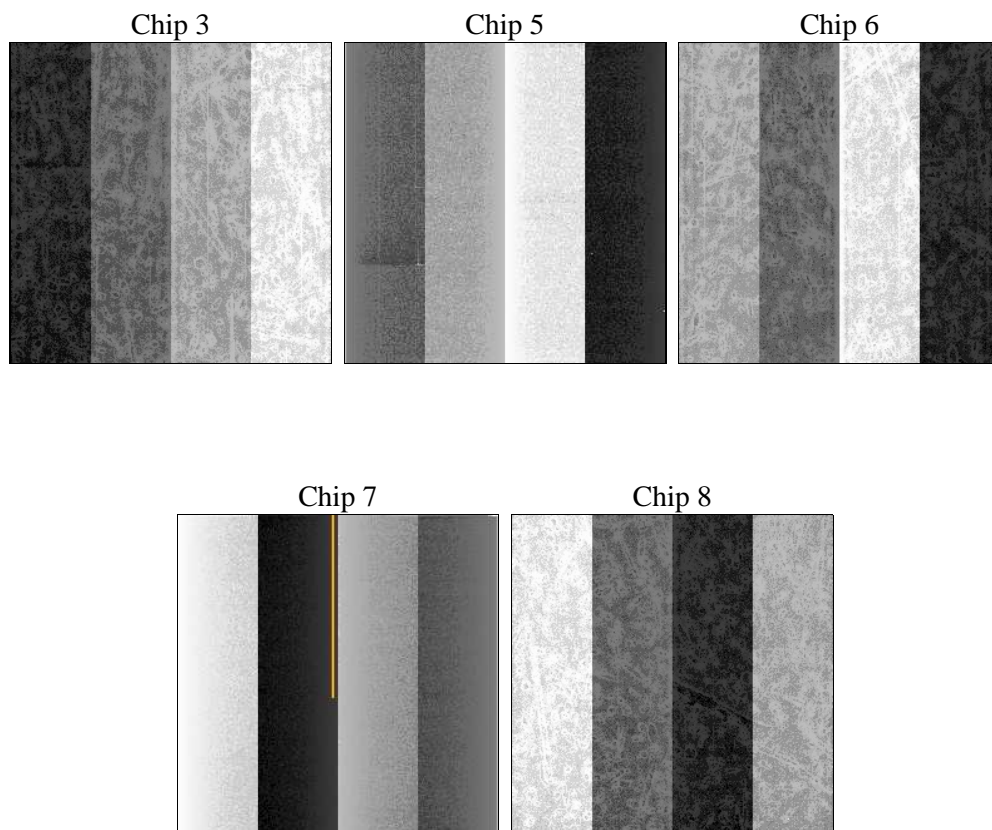
2 OBI

2.1 OBI

2.1.1 Images



2.1.2 Bias



2.1.3 Parameters

obi_num	0	Obi number	sched_exp_time	10718.639000	[s] Scheduled observation exposure time
ascdsver	8.4.3	Processing system revision	ontime	10760.100082755	Sum of GTIs [s]
caldsver	4.4.8	 	ontime3	10760.100082755	Sum of GTIs [s]
date	2012-02-28T16:36:45	Date and time of file creation	ontime5	10760.100082755	Sum of GTIs [s]
revision	2	Processing version of data	ontime6	10760.100082755	Sum of GTIs [s]
			ontime7	10760.100082755	Sum of GTIs [s]
			ontime8	10760.100082755	Sum of GTIs [s]
			l1events	436862	Number of level 1 events

2.1.4 Events

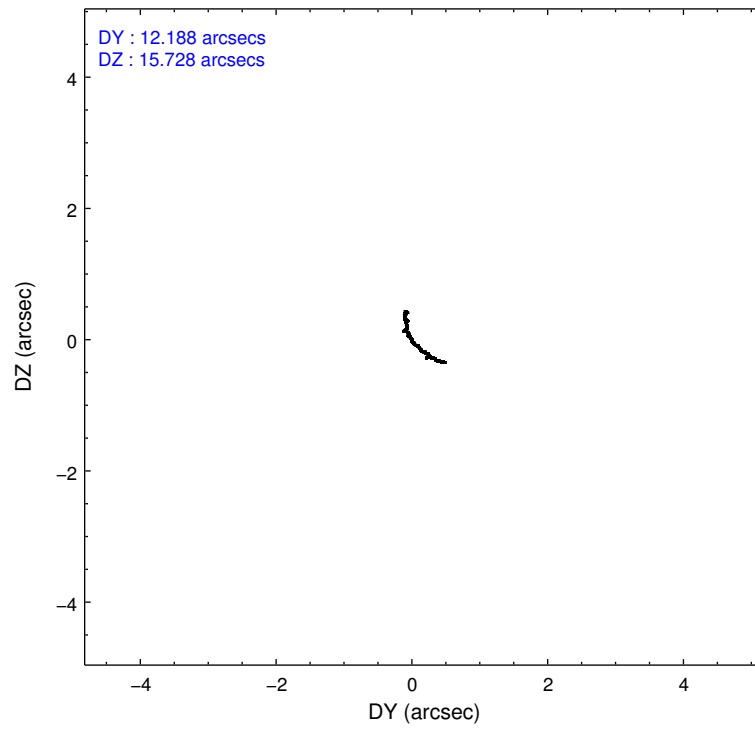
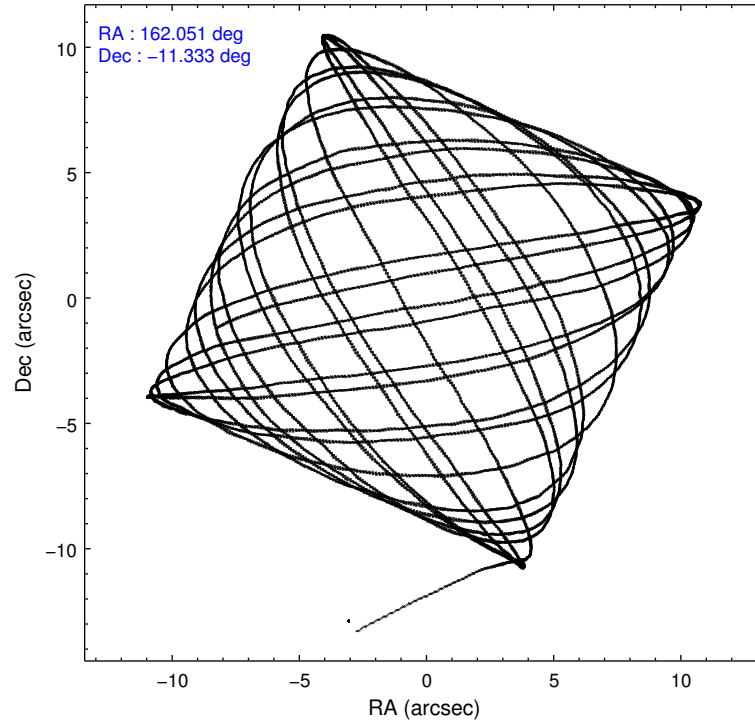
	ccd 3	ccd 5	ccd 6	ccd 7	ccd 8
level 1 events	67845	113904	71226	90127	93760
rejected events	60332	57984	63047	49831	69647
rejected %	88%	50%	88%	55%	74%

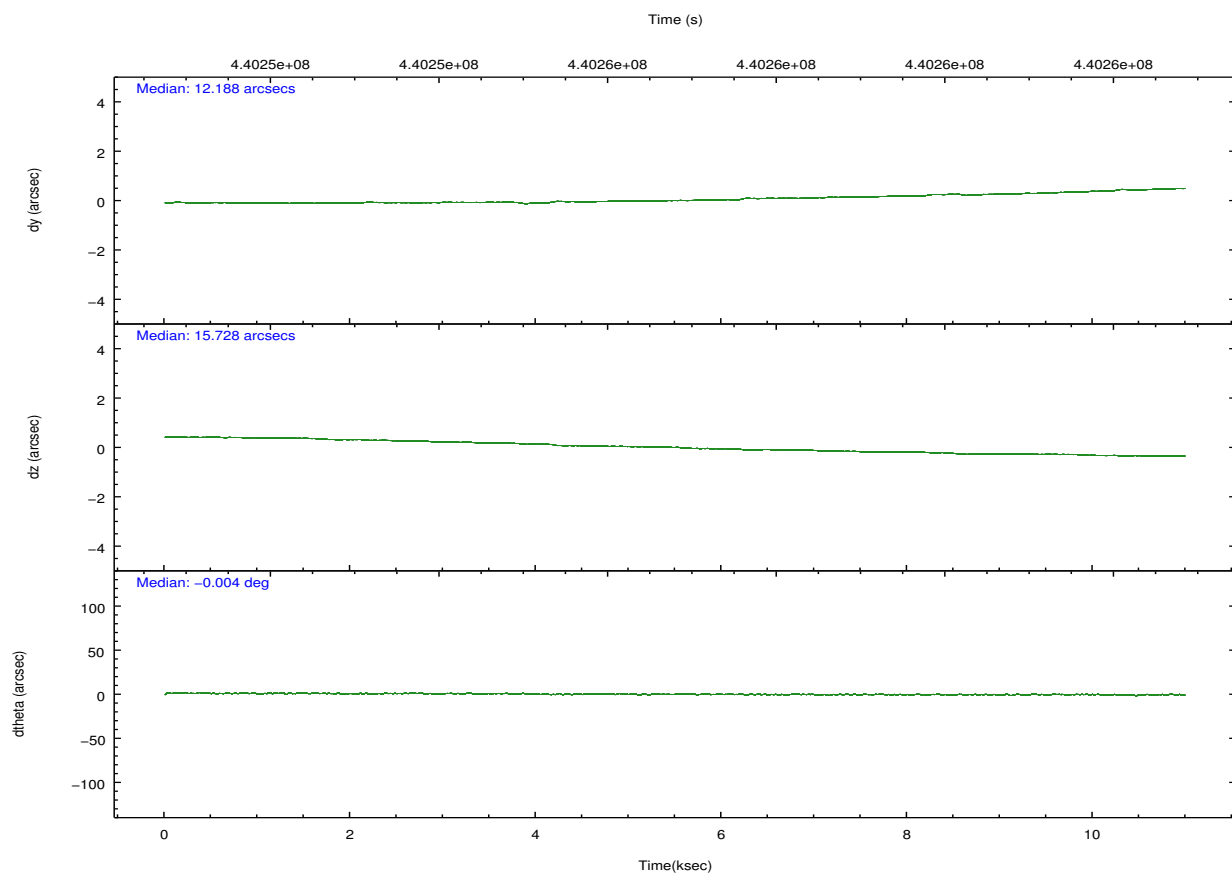
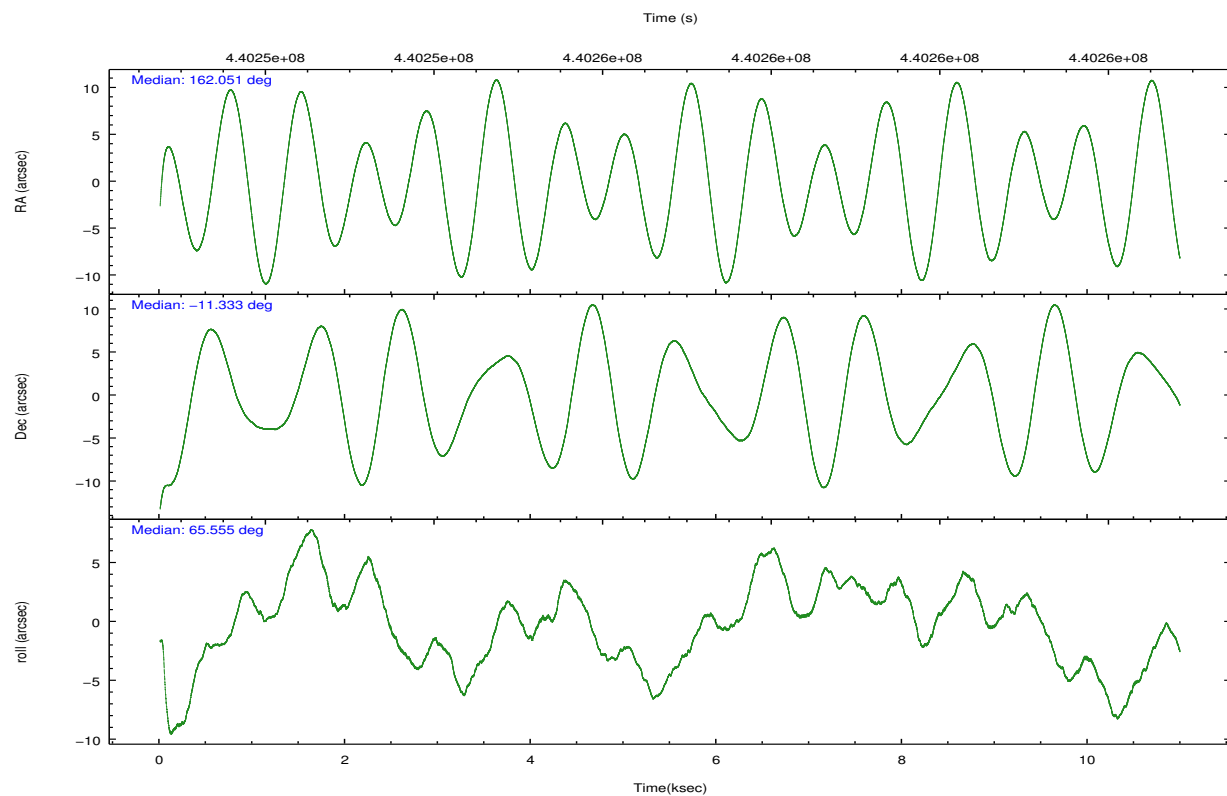
	ccd 3	ccd 5	ccd 6	ccd 7	ccd 8
grade 0 events	2638	6166	2789	3644	7124
	3%	5%	3%	4%	7%
grade 1 events	29	276	35	114	74
	0%	0%	0%	0%	0%
grade 2 events	1692	16943	1838	8080	5937
	2%	14%	2%	8%	6%
grade 3 events	822	2196	837	3565	2352
	1%	1%	1%	3%	2%
grade 4 events	844	1845	838	3492	2214
	1%	1%	1%	3%	2%
grade 5 events	3256	8919	3439	9180	4955
	4%	7%	4%	10%	5%
grade 6 events	1518	28789	1879	21526	6490
	2%	25%	2%	23%	6%
grade 7 events	57046	48770	59571	40526	64614
	84%	42%	83%	44%	68%

2.2 Compared Parameters

Parameter	Planned	Actual	Parameter	Planned	Actual
Instrument	ACIS	ACIS	Obspar format version number	7	7
Detector	ACIS-35678	ACIS-35678	Obspar file type	PREDICTED	ACTUAL
Grating	NONE	NONE	Obspar update status	NONE	UPDATED
Data mode	VFAINT	VFAINT	CCD I0 on	N	N
Observation mode	POINTING	POINTING	CCD I1 on	N	N
[deg] Pointing RA	162.053893	162.0508336198095	CCD I2 on	N	N
[deg] Pointing Dec	-11.360247	-11.33308546614206	CCD I3 on	O1	Y
[deg] Pointing Roll	65.400272	65.55630529349638	CCD S0 on	N	N
[mm] SIM focus pos	-0.684267	-0.6828225247311905	CCD S1 on	Y	Y
[mm] SIM defocus	0	0.001444936568705701	CCD S2 on	Y	Y
[mm] SIM translation stage pos	-190.132523	-190.1425803651734	CCD S3 on	Y	Y
[mm] SIM translation stage offset	0	0.01005778216563158	CCD S4 on	Y	Y
[s] Observation start time (MET)	440251579.184000	440250589.26593	CCD S5 on	N	N
Observation start date	2011-12-14T12:05:13	2011-12-14T11:49:49	Number of optional ACIS chips dropped	0	0
[s] Observation end time (MET)	440262298.184000	440262523.34156	On-chip summing requested	N	N
Observation end date	2011-12-14T15:03:52	2011-12-14T15:08:43	Subarray requested	NONE	NONE
Read mode	TIMED	TIMED	Alternating exposures requested	N	N
			[s] Primary exposure time	0.000000	3.1

2.3 Aspect



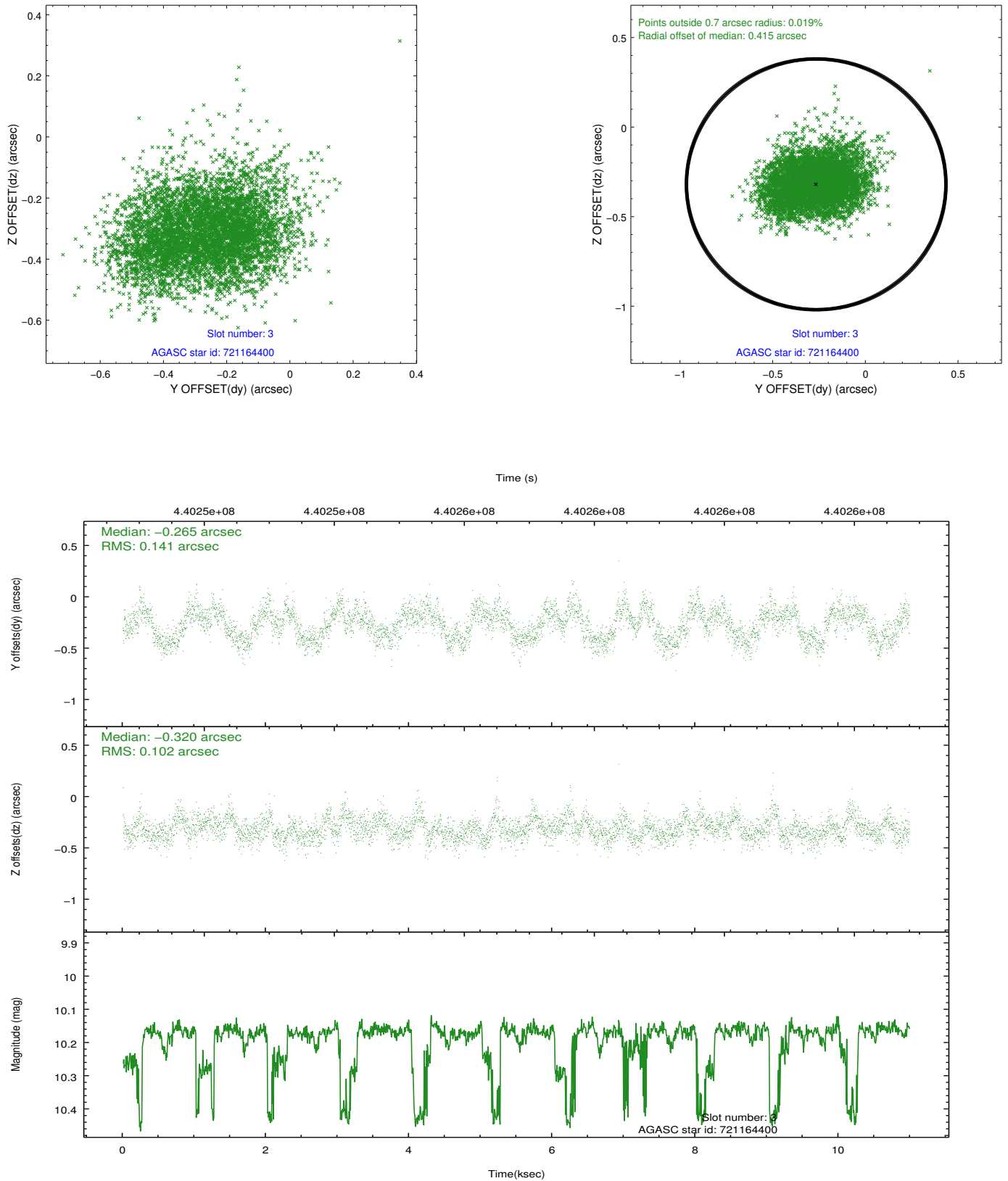


Slot Statistics

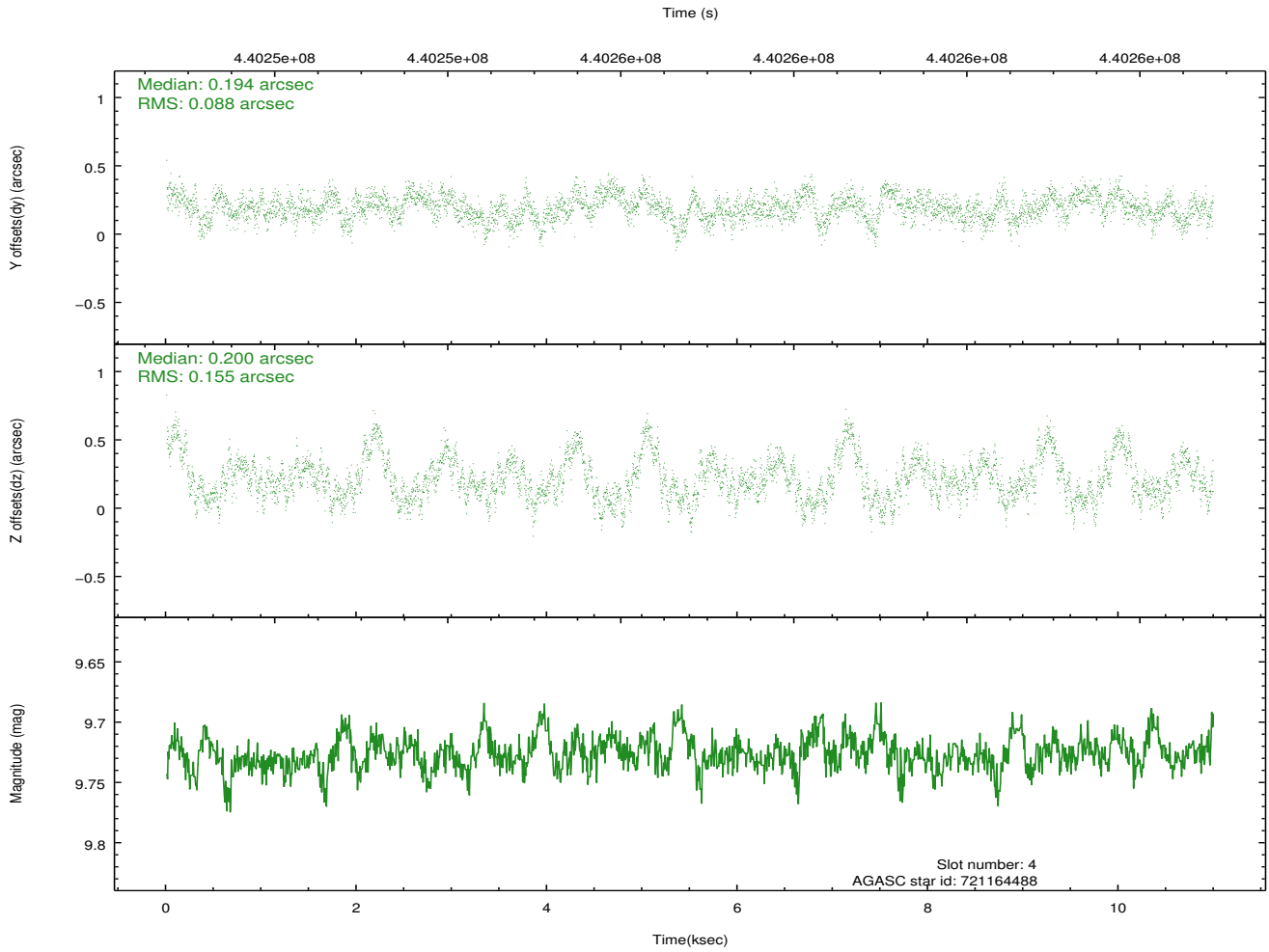
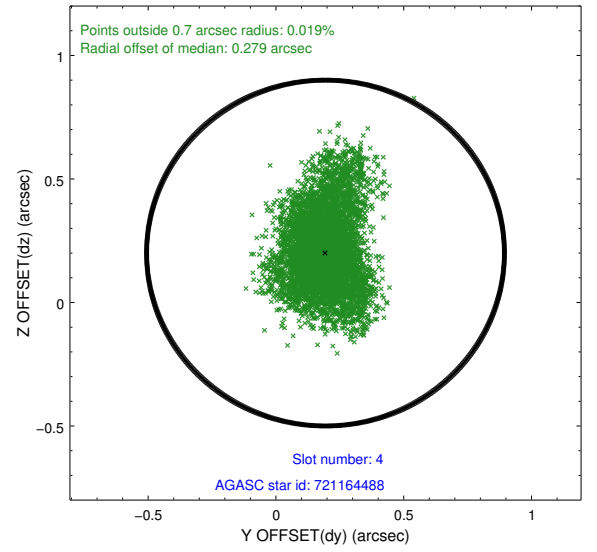
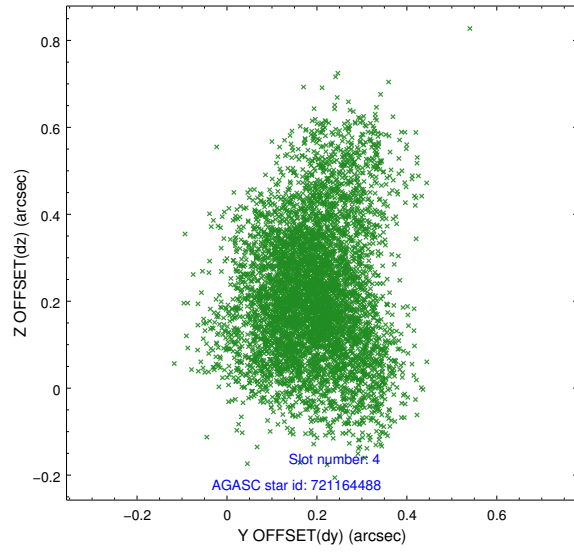
slot	status	id	mag	n_pts	med_dy	med_dz	dr1	dr2	ra	dec	mean_y	mean_z
0	FID	ACIS-S-2	6.90	2679	-0.055	-0.007	0.007	0.011	0.000000	0.000000	-765.20	-1737.10
1	FID	ACIS-S-4	6.98	2680	0.184	0.028	0.009	0.019	0.000000	0.000000	2148.09	170.95
2	FID	ACIS-S-5	7.02	2680	-0.161	-0.013	0.009	0.016	0.000000	0.000000	-1817.56	165.09
3	GUIDE	721164400	10.18	5303	-0.265	-0.320	0.186	0.295	161.735978	-10.602767	2010.74	2158.00
4	GUIDE	721164488	9.73	5353	0.194	0.200	0.186	0.329	162.256070	-12.013478	-1841.13	-1625.74
5	GUIDE	721165352	7.98	5355	0.047	0.179	0.096	0.152	162.386880	-11.960984	-1479.29	-1966.52
6	GUIDE	721168480	9.71	5346	-0.130	0.097	0.145	0.231	162.432536	-11.110537	1373.38	-842.38
7	GUIDE	721170736	9.83	5350	0.151	-0.204	0.160	0.277	161.706822	-11.781063	-1886.77	480.71

2.4 Star Slots

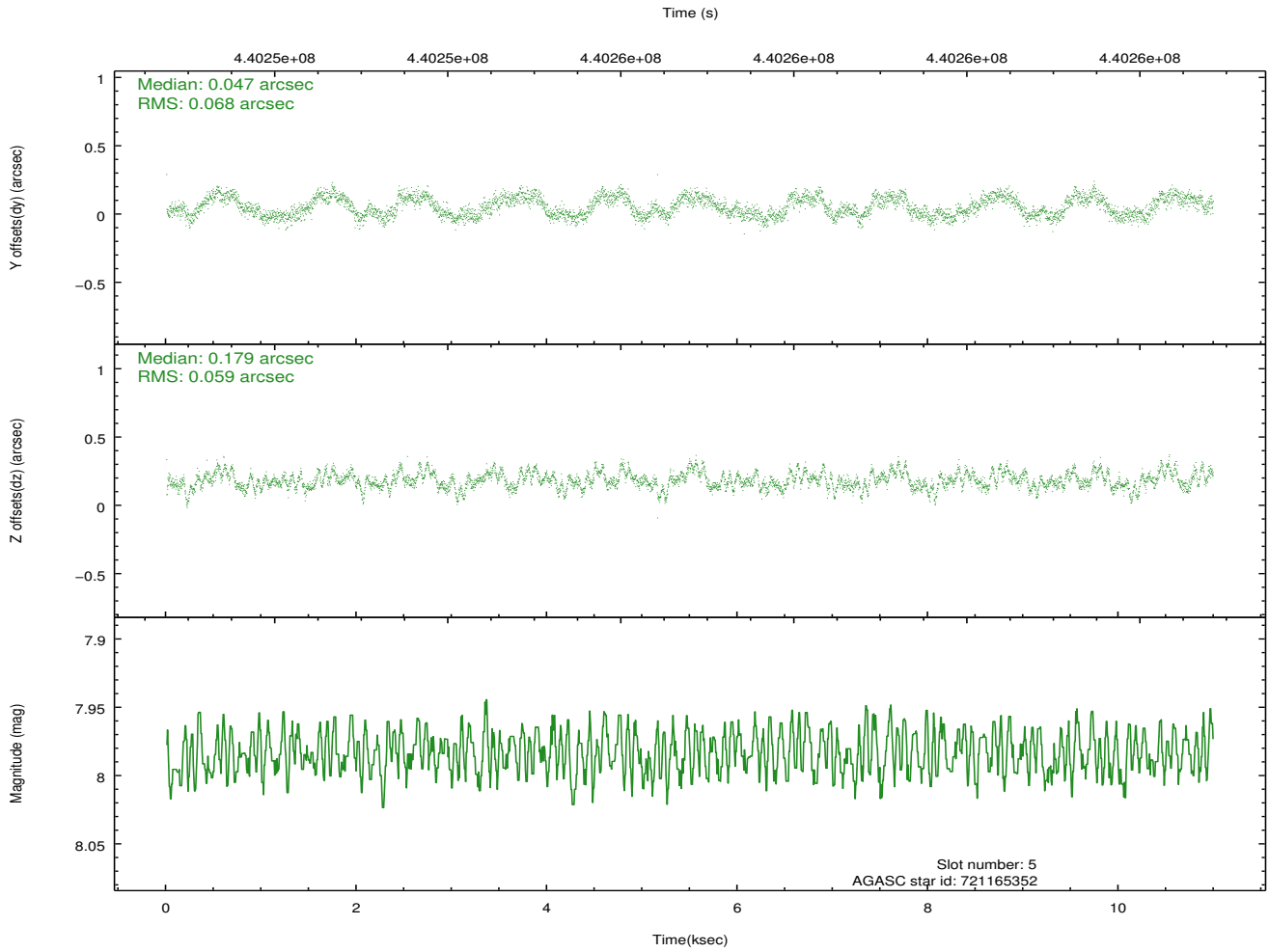
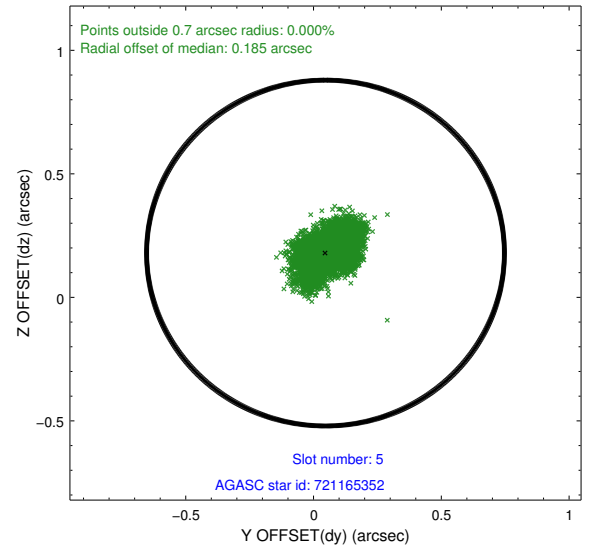
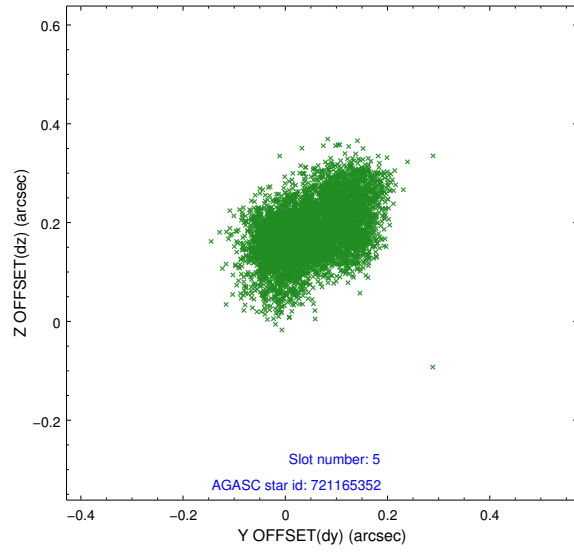
2.4.1 Slot 3



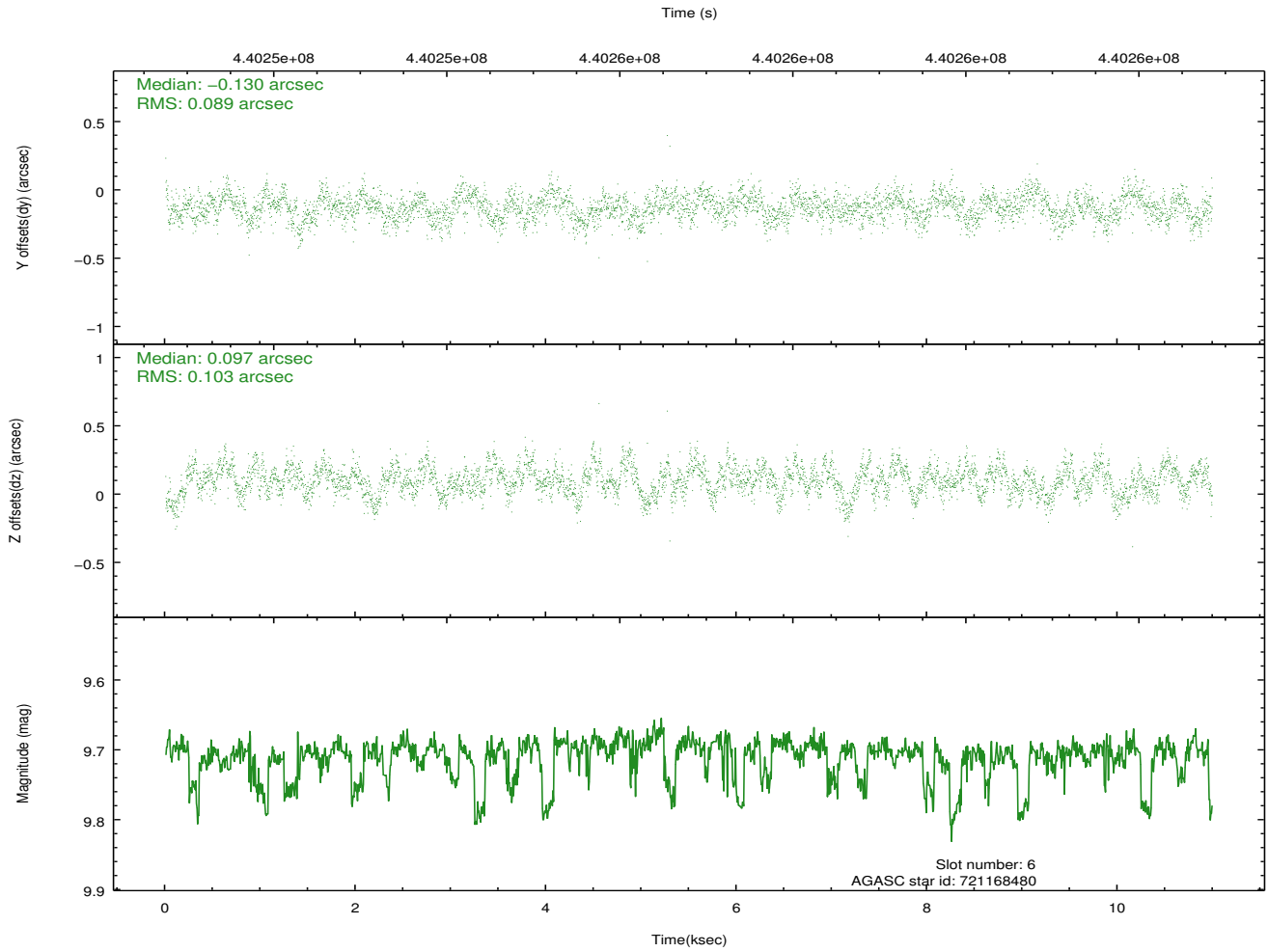
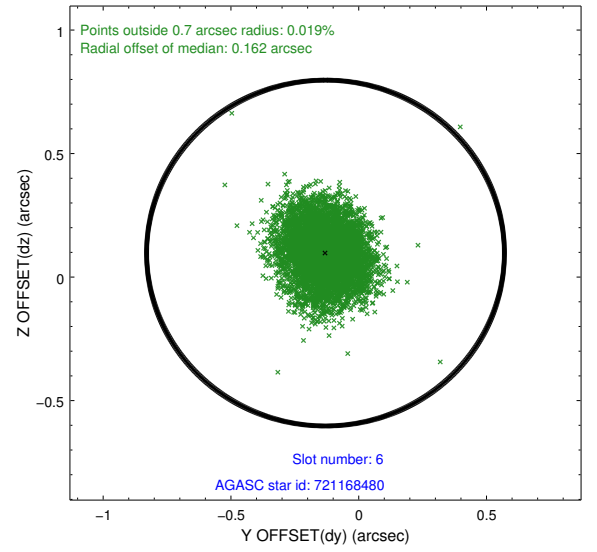
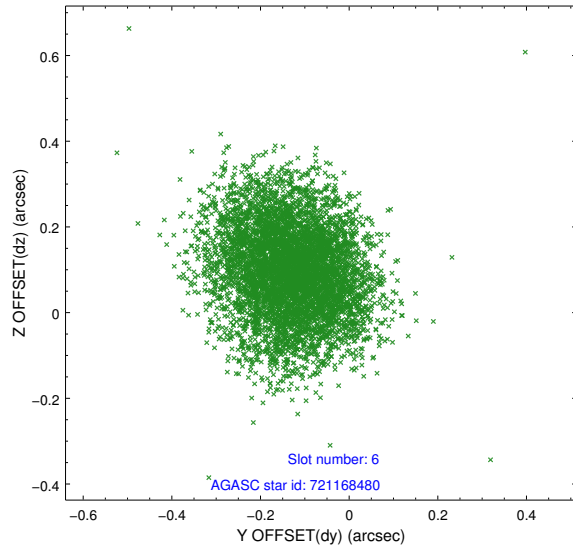
2.4.2 Slot 4



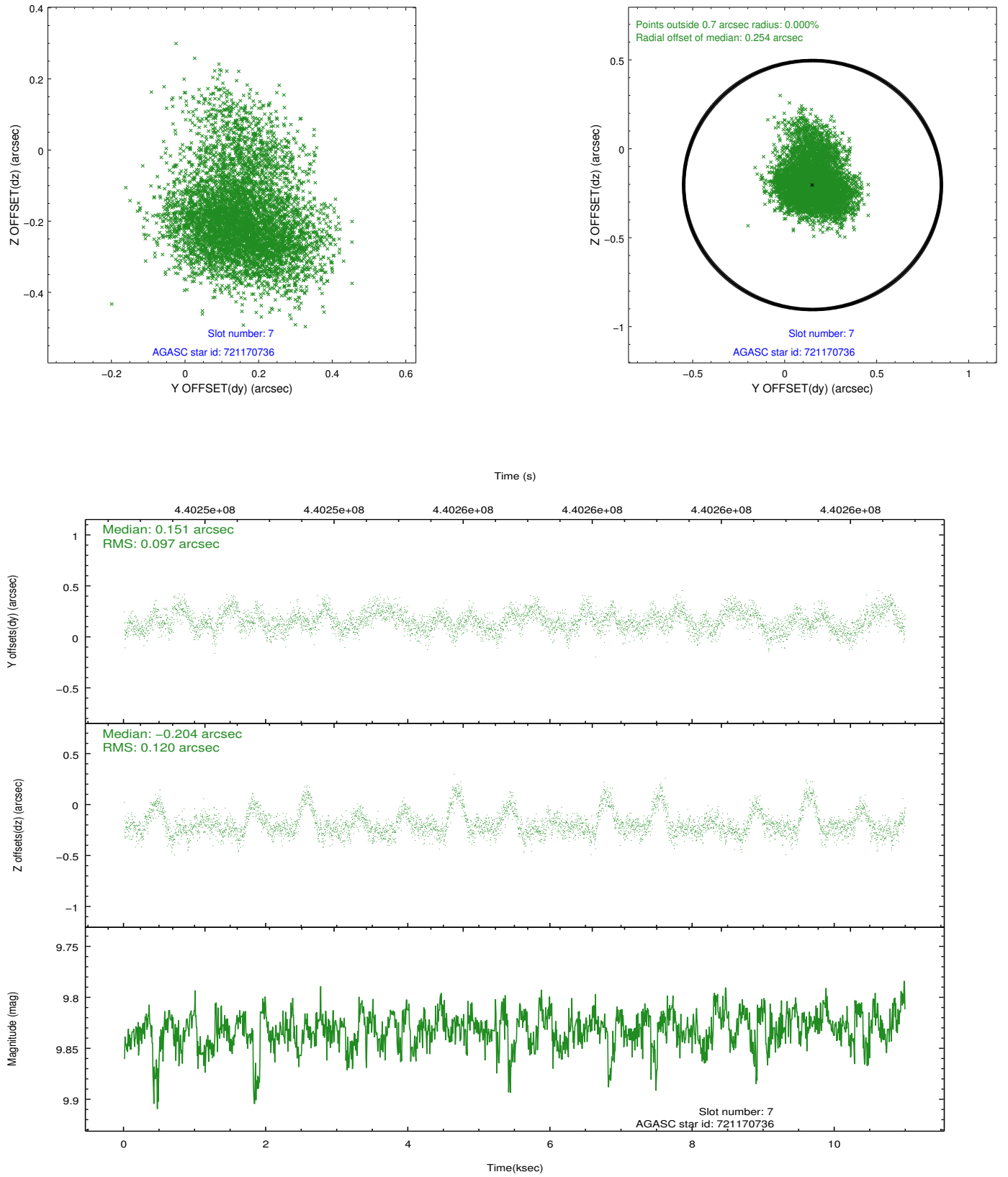
2.4.3 Slot 5



2.4.4 Slot 6

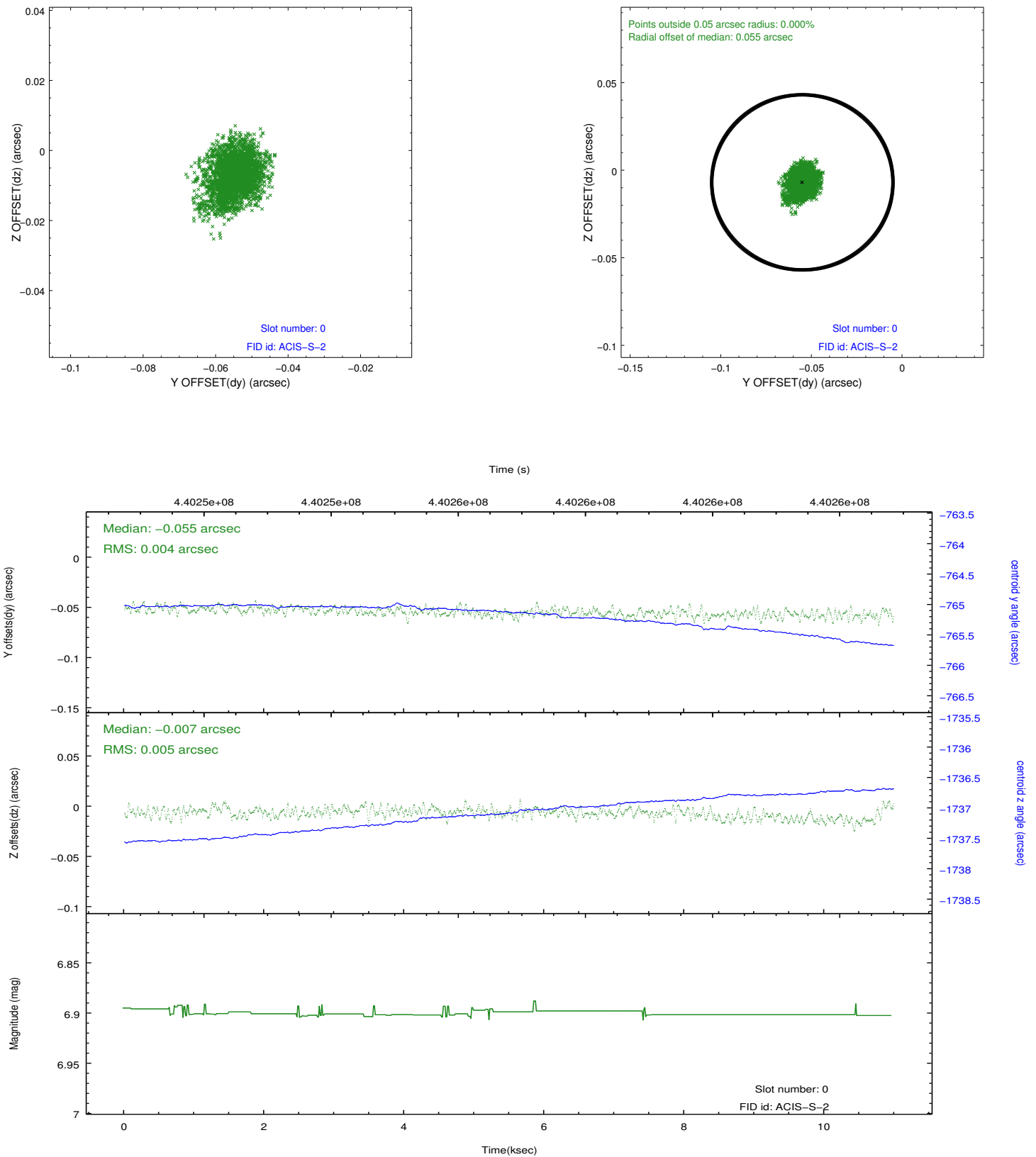


2.4.5 Slot 7

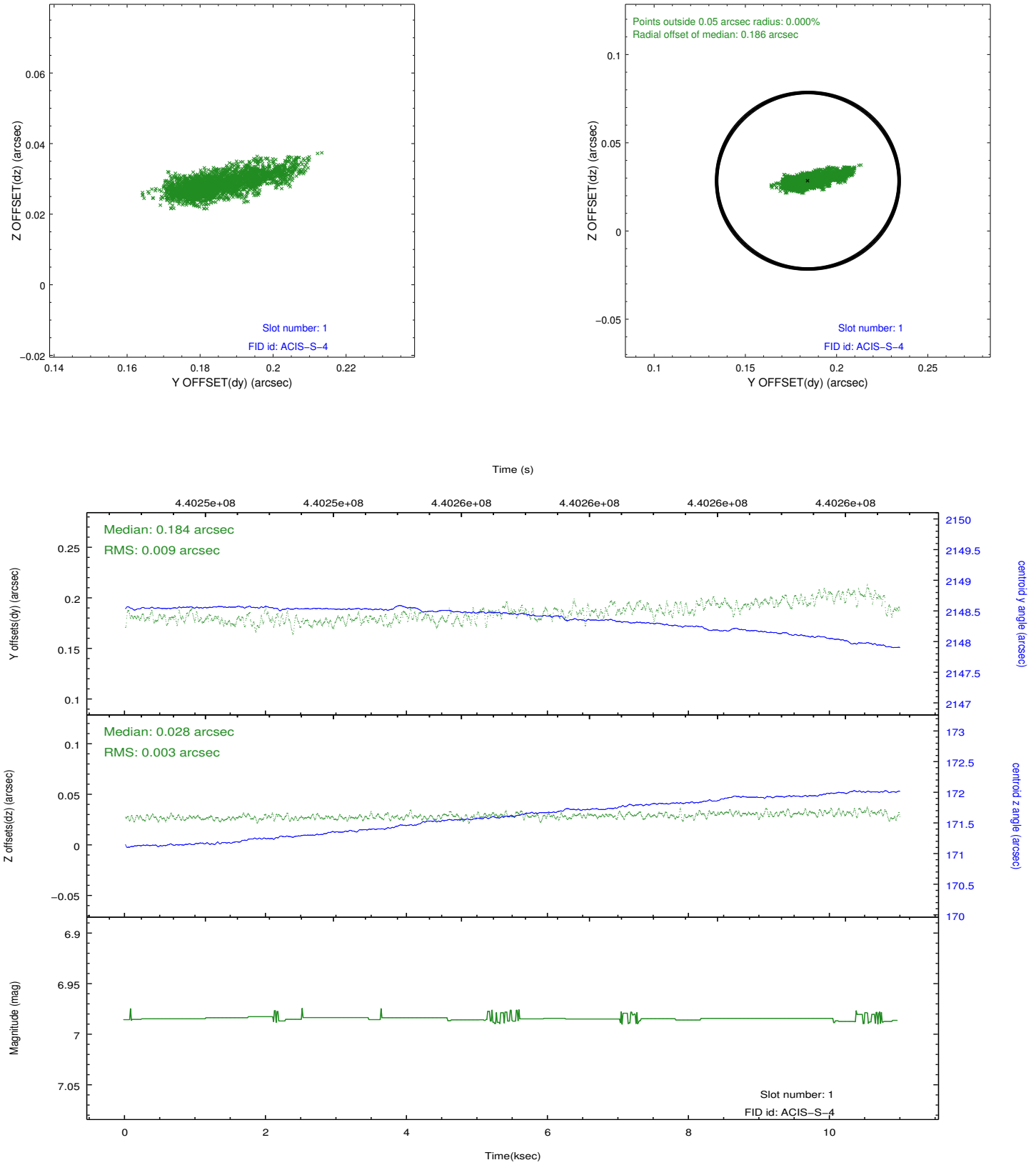


2.5 FID Slots

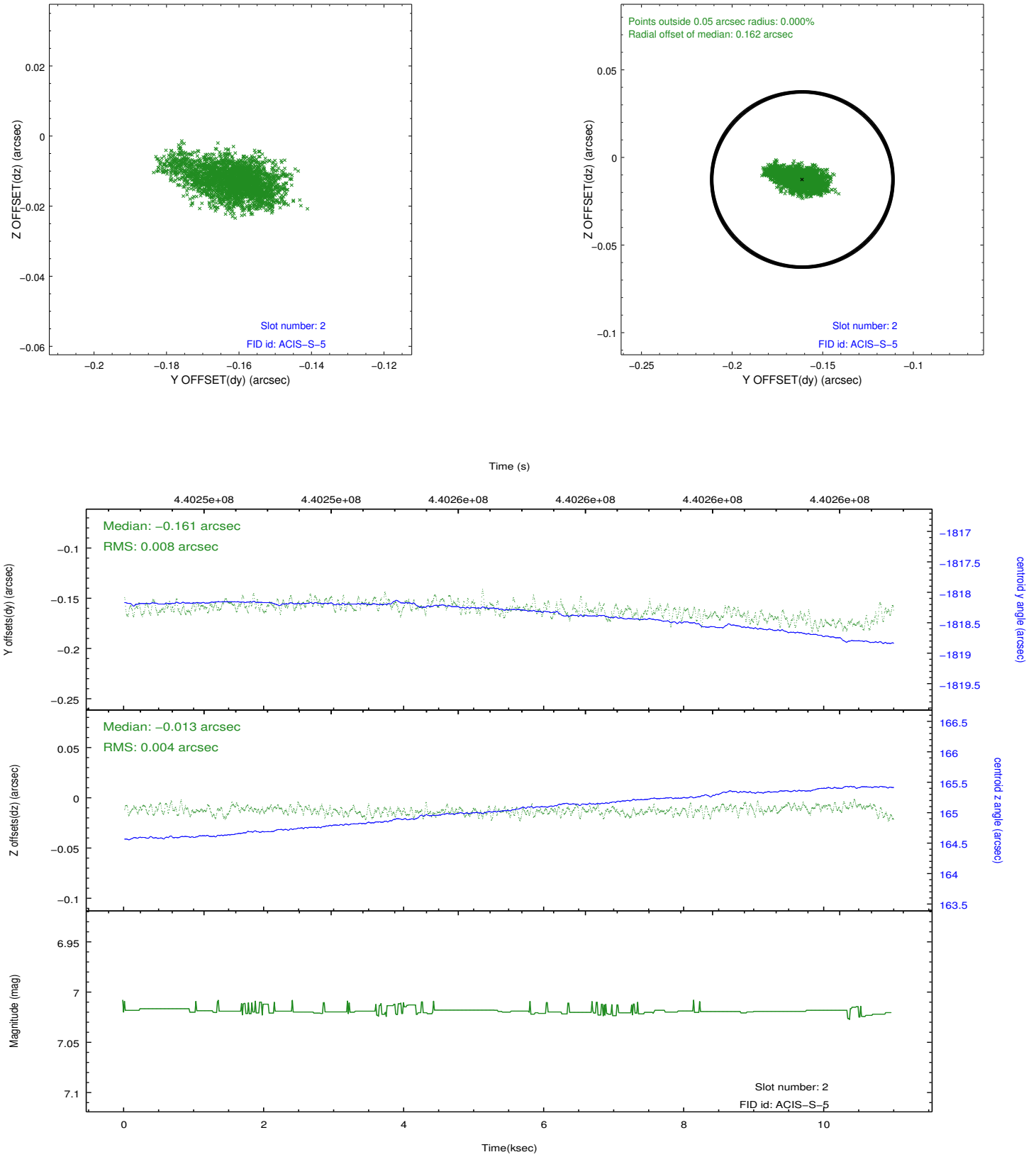
2.5.1 Slot 0



2.5.2 Slot 1



2.5.3 Slot 2



A Summary

A.1 Status

V&V Scientist	Jen Lauer
V&V Date (YYYY-MM-DD)	2012.02.29
V&V Edition	1
V&V Disposition and Status	OK
V&V Charge Time	10.760100082755

A.2 Comments