

V&V Reference Report

L2 ASCDS Version : 8.4.5

Observation 12433 - L2 Version 2
Chandra X-Ray Center

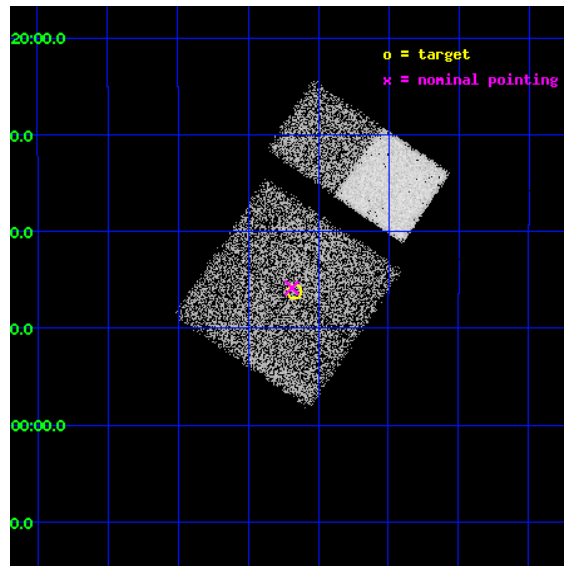
L2 Processing Date : Jul 8 2012

Contents

1	Front	2
2	OBI	3
2.1	OBI	3
2.1.1	Images	3
2.1.2	Bias	3
2.1.3	Parameters	4
2.1.4	Events	4
2.2	Compared Parameters	5
2.3	Aspect	6
2.4	Star Slots	9
2.4.1	Slot 3	9
2.4.2	Slot 4	10
2.4.3	Slot 5	11
2.4.4	Slot 6	12
2.4.5	Slot 7	13
2.5	FID Slots	14
2.5.1	Slot 0	14
2.5.2	Slot 1	15
2.5.3	Slot 2	16
A	Summary	17
A.1	Status	17
A.2	Comments	17

1 Front

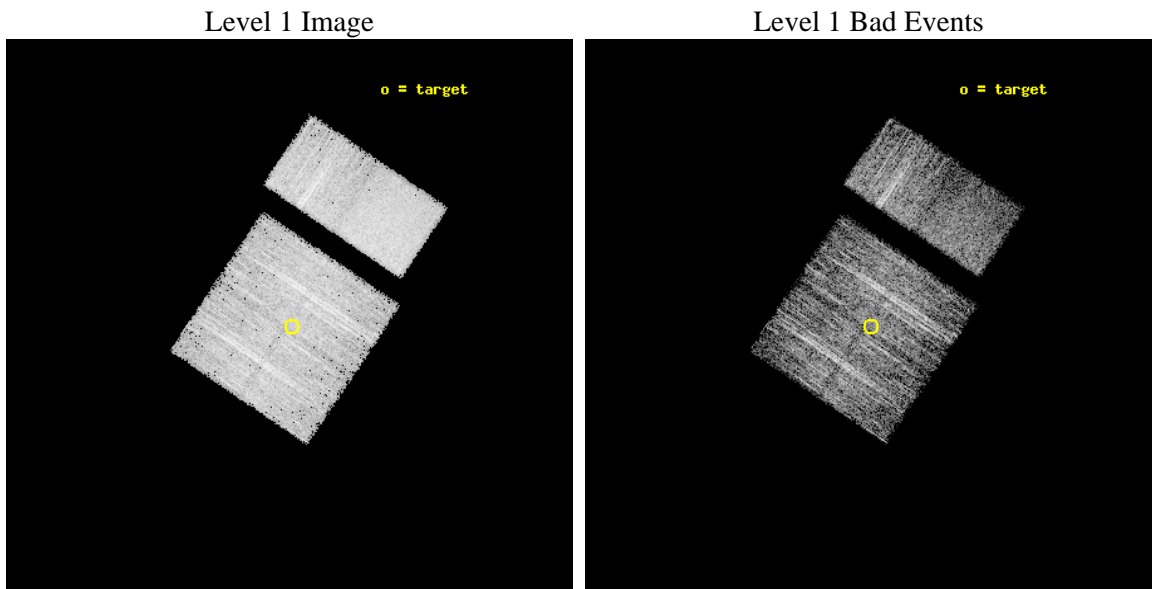
seq_num	401174	Sequence number
obs_id	12433	Observation id
title	The Nature of INTEGRAL Sources in the Galactic Plane	Proposal titl
observer	Dr. John Tomsick	Principal investigator
object	IGR J06552-1146	Source name
dtcycle	0	
cycle	P	events from which exps? Prim/Second/Both
ra_targ	103.792083	Observer's specified target RA [deg]
dec_targ	-11.77	Observer's specified target Dec [deg]
ra_nom	103.79709027181	Nominal RA [deg]
dec_nom	-11.763819163683	Nominal Dec [deg]
roll_nom	34.093087993178	Nominal Roll [deg]
revision	2	Processing version of data
ontime	5049.5999812484	Sum of GTIs [s]
livetime	4985.6589057817	Livetime [s]
ontime0	5049.5057145953	Sum of GTIs [s]
ontime1	5049.5467545986	Sum of GTIs [s]
ontime2	5049.5877946019	Sum of GTIs [s]
ontime3	5049.5999812484	Sum of GTIs [s]
ontime6	5049.5999812484	Sum of GTIs [s]
ontime7	5049.5999812484	Sum of GTIs [s]
l2events	36176	Number of level 2 events



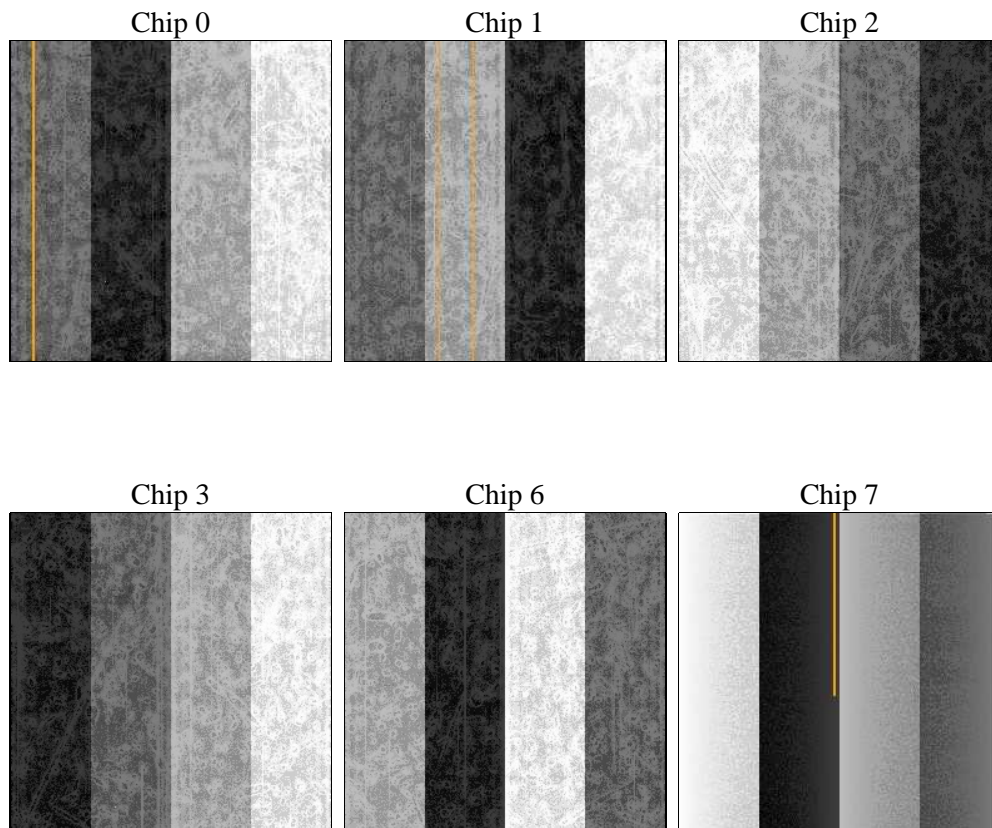
2 OBI

2.1 OBI

2.1.1 Images



2.1.2 Bias



2.1.3 Parameters

obi_num	0	Obi number	sched_exp_time	5000.000000	[s] Scheduled observation exposure time
ascdsver	8.4.5	Processing system revision	ontime	5049.5999812484	Sum of GTIs [s]
caldsver	4.5.0	 	ontime0	5049.5057145953	Sum of GTIs [s]
date	2012-07-08T04:15:46	Date and time of file creation	ontime1	5049.5467545986	Sum of GTIs [s]
revision	2	Processing version of data	ontime2	5049.5877946019	Sum of GTIs [s]
			ontime3	5049.5999812484	Sum of GTIs [s]
			ontime6	5049.5999812484	Sum of GTIs [s]
			ontime7	5049.5999812484	Sum of GTIs [s]
			l1events	222137	Number of level 1 events

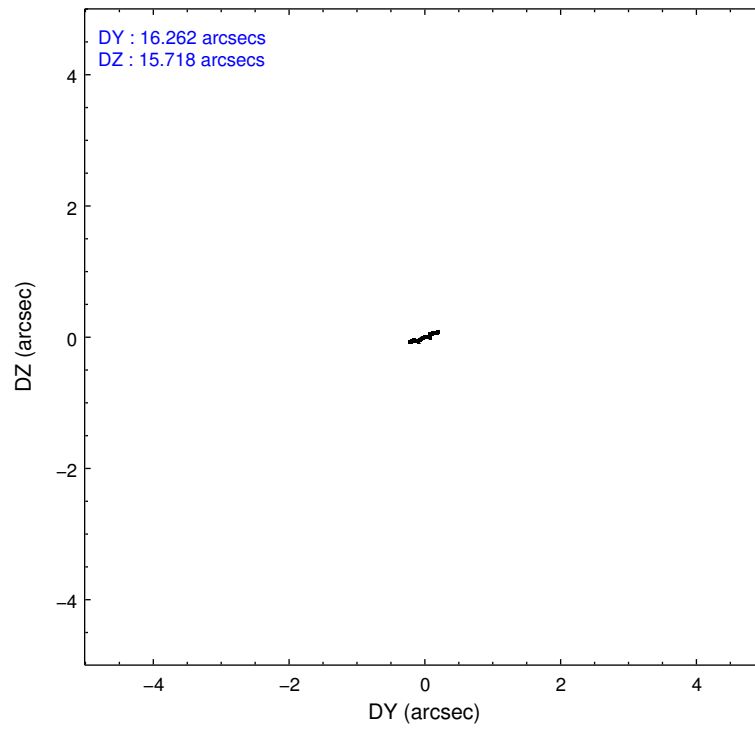
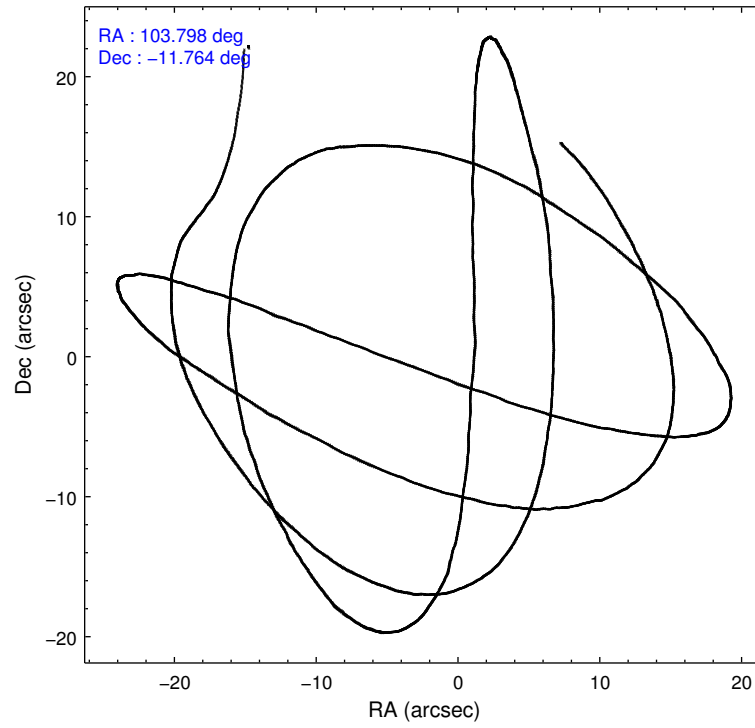
2.1.4 Events

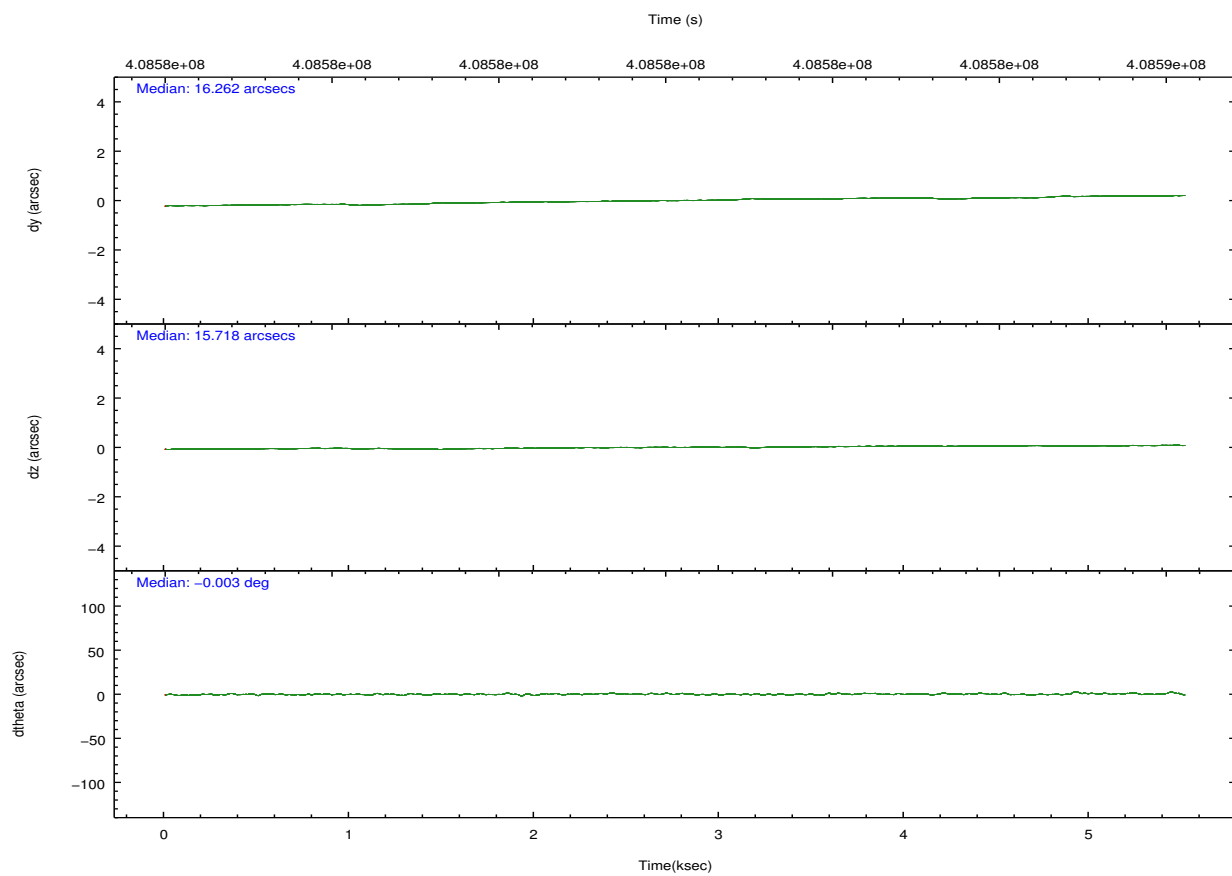
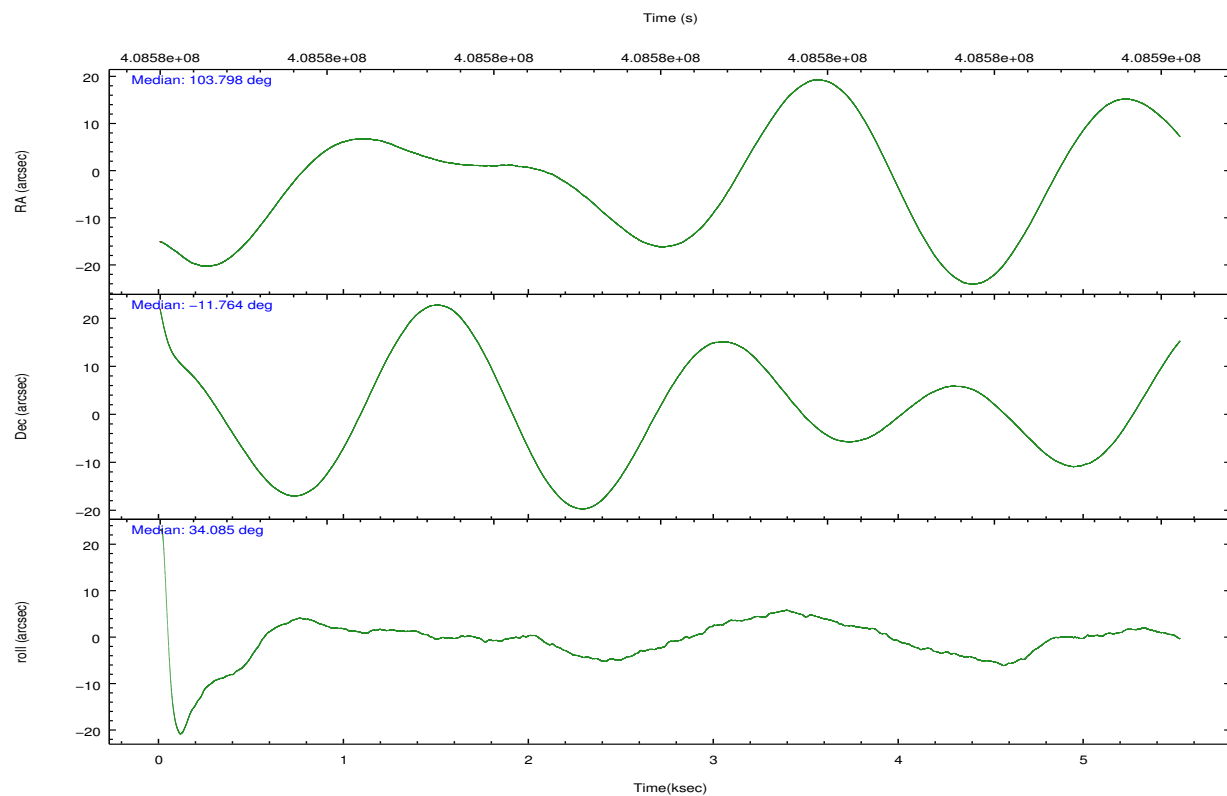
	ccd 0	ccd 1	ccd 2	ccd 3	ccd 6	ccd 7		ccd 0	ccd 1	ccd 2	ccd 3	ccd 6	ccd 7
level 1 events	34486	33854	35041	35656	38149	44951	grade 0 events	1437	1502	1500	1303	1440	1841
rejected events	30411	29670	31055	31959	34009	24928		4%	4%	4%	3%	3%	4%
rejected %	88%	87%	88%	89%	89%	55%	grade 1 events	16	23	20	20	26	59
								0%	0%	0%	0%	0%	0%
							grade 2 events	1003	965	918	808	959	4121
								2%	2%	2%	2%	2%	9%
							grade 3 events	414	419	412	417	413	1777
								1%	1%	1%	1%	1%	3%
							grade 4 events	394	411	422	406	433	1749
								1%	1%	1%	1%	1%	3%
							grade 5 events	1542	1472	1389	1720	1635	4728
								4%	4%	3%	4%	4%	10%
							grade 6 events	830	890	741	769	899	10560
								2%	2%	2%	2%	2%	23%
							grade 7 events	28850	28172	29639	30213	32344	20116
								83%	83%	84%	84%	84%	44%

2.2 Compared Parameters

Parameter	Planned	Actual	Parameter	Planned	Actual
Instrument	ACIS	ACIS	Obspar format version number	7	7
Detector	ACIS-012367	ACIS-012367	Obspar file type	PREDICTED	ACTUAL
Grating	NONE	NONE	Obspar update status	NONE	UPDATED
Data mode	FAINT	FAINT	CCD I0 on	Y	Y
Observation mode	POINTING	POINTING	CCD I1 on	Y	Y
[deg] Pointing RA	103.785059	103.7970902718148	CCD I2 on	Y	Y
[deg] Pointing Dec	-11.788466	-11.7638191636832	CCD I3 on	Y	Y
[deg] Pointing Roll	33.881819	34.09308799317841	CCD S0 on	N	N
[mm] SIM focus pos	-0.782348	-0.7809083437167272	CCD S1 on	N	N
[mm] SIM defocus	0	0.001439871863259334	CCD S2 on	O1	Y
[mm] SIM translation stage pos	-233.592463	-233.5874344608287	CCD S3 on	O2	Y
[mm] SIM translation stage offset	0	-0.005018542100998502	CCD S4 on	N	N
[s] Observation start time (MET)	408580812.184000	408579642.10005	CCD S5 on	N	N
Observation start date	2010-12-12T22:39:06	2010-12-12T22:20:42	Number of optional ACIS chips dropped	0	0
[s] Observation end time (MET)	408585812.184000	408586755.08791	On-chip summing requested	N	N
Observation end date	2010-12-13T00:02:26	2010-12-13T00:19:15	Subarray requested	NONE	NONE
Read mode	TIMED	TIMED	Alternating exposures requested	N	N
			[s] Primary exposure time	0.000000	3.2

2.3 Aspect



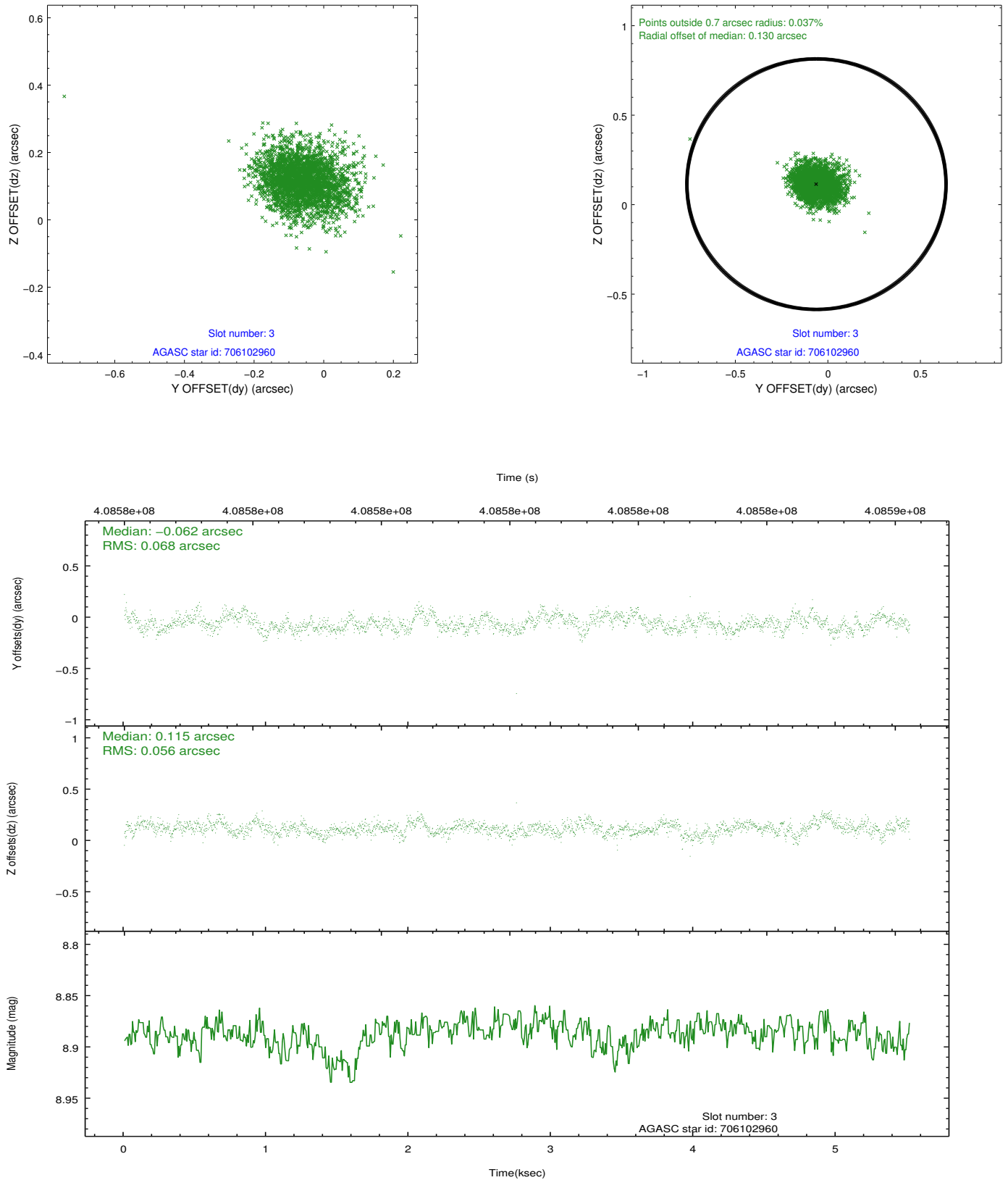


Slot Statistics

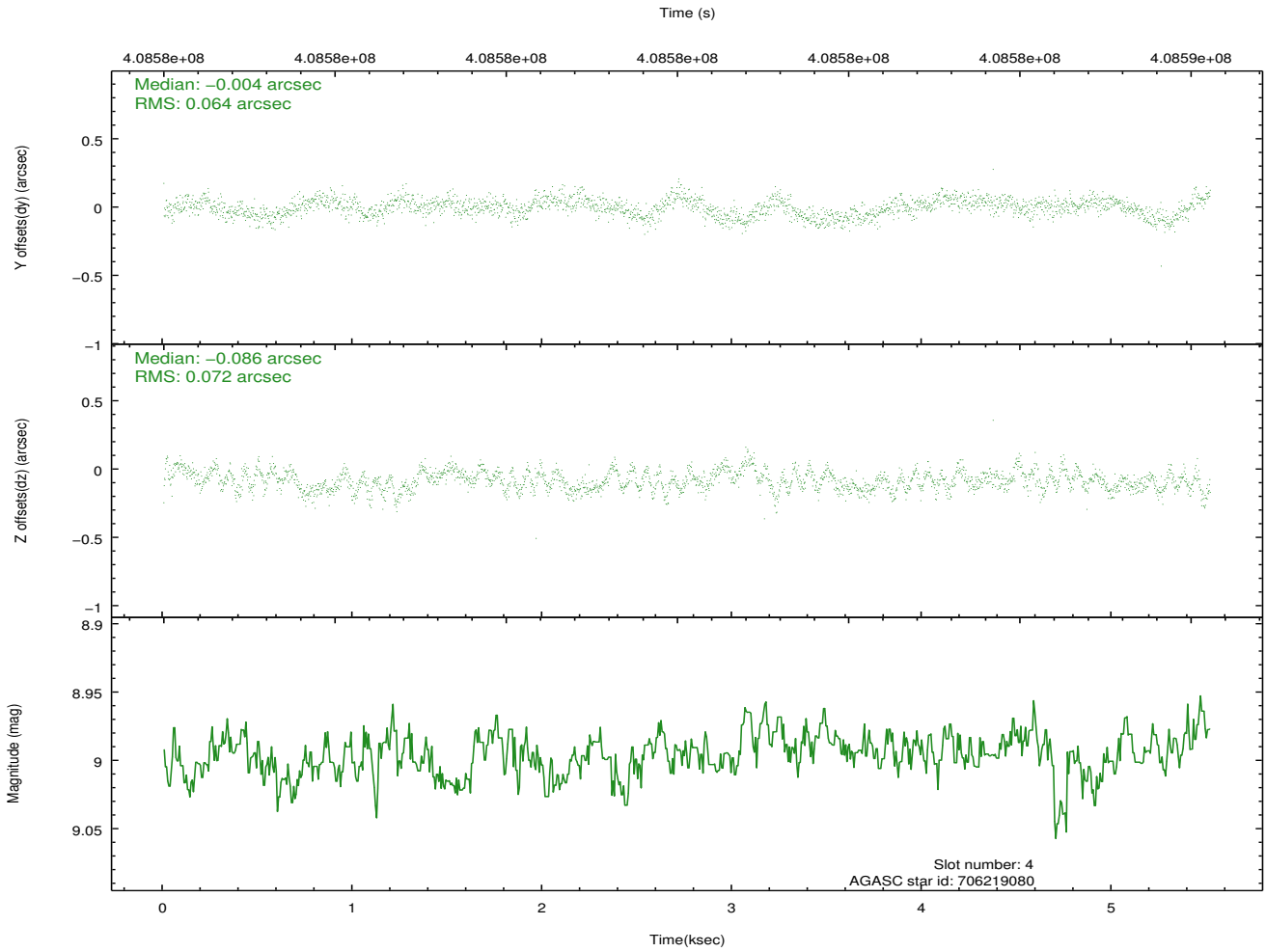
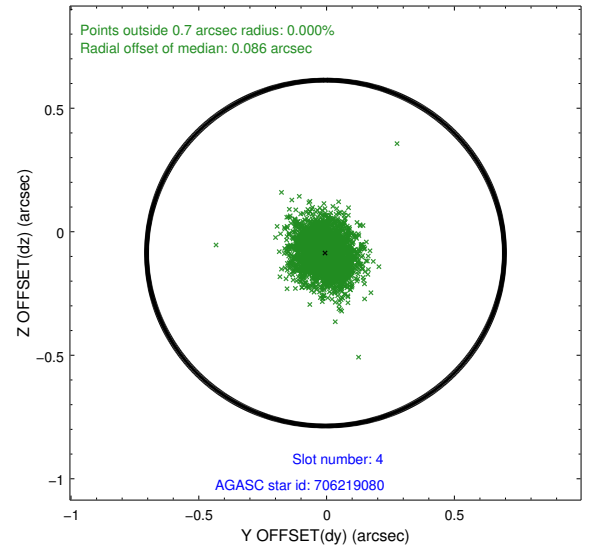
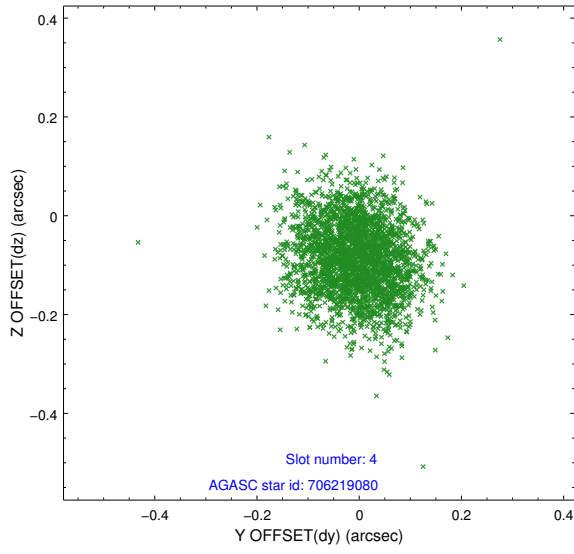
slot	status	id	mag	n_pts	med_dy	med_dz	dr1	dr2	ra	dec	mean_y	mean_z
0	FID	ACIS-I-1	7.06	1346	-0.015	-0.049	0.009	0.016	0.000000	0.000000	923.17	-839.37
1	FID	ACIS-I-4	6.98	1345	0.135	0.065	0.010	0.019	0.000000	0.000000	2143.94	1060.02
2	FID	ACIS-I-5	7.05	1346	-0.219	0.055	0.008	0.017	0.000000	0.000000	-1823.67	1059.04
3	GUIDE	706102960	8.89	2688	-0.062	0.115	0.092	0.152	103.075511	-11.538926	-1578.09	2138.58
4	GUIDE	706219080	9.00	2688	-0.004	-0.086	0.103	0.162	103.784252	-11.432826	711.53	1065.46
5	GUIDE	706219176	8.75	2689	-0.002	-0.088	0.097	0.159	103.641441	-11.391530	376.85	1469.33
6	GUIDE	706222320	9.29	2684	0.105	-0.123	0.127	0.209	103.998816	-11.539274	1127.13	324.96
7	GUIDE	706228776	9.56	2686	-0.044	0.188	0.144	0.238	104.516279	-11.806267	2103.17	-1491.72

2.4 Star Slots

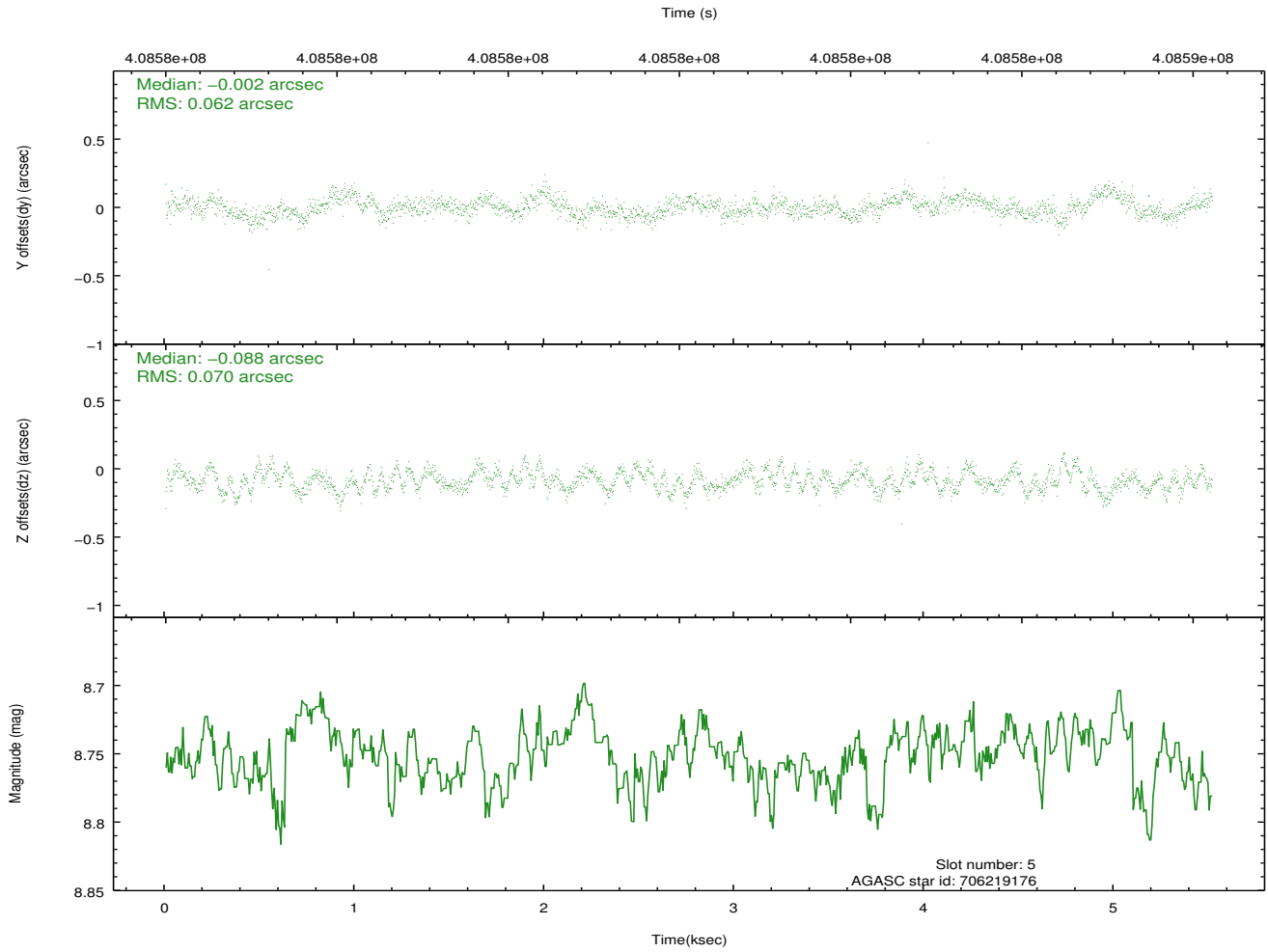
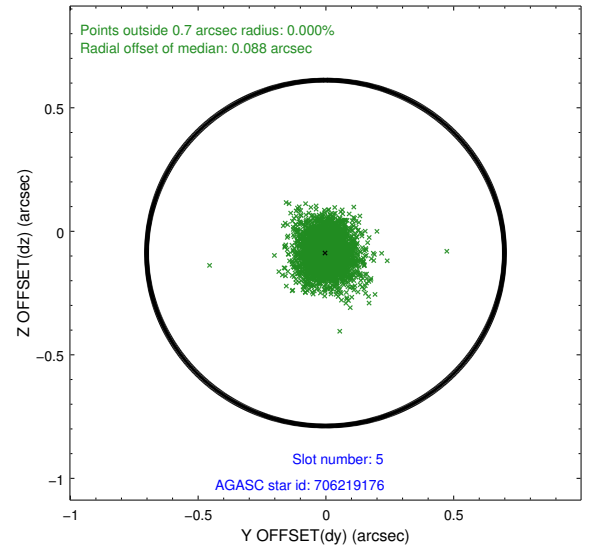
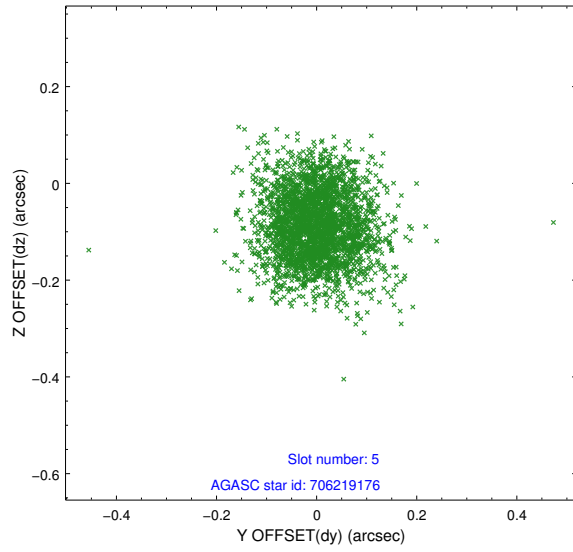
2.4.1 Slot 3



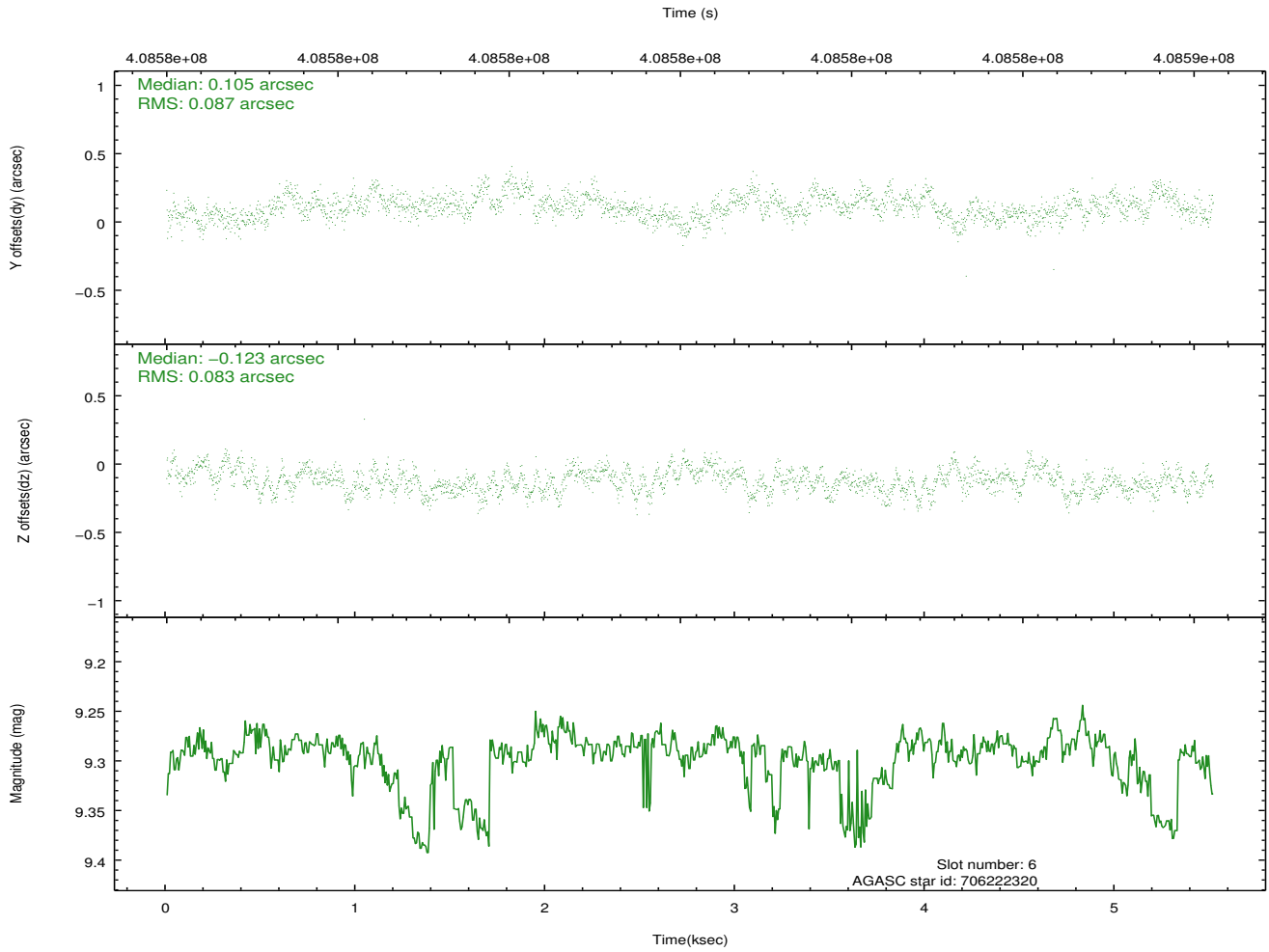
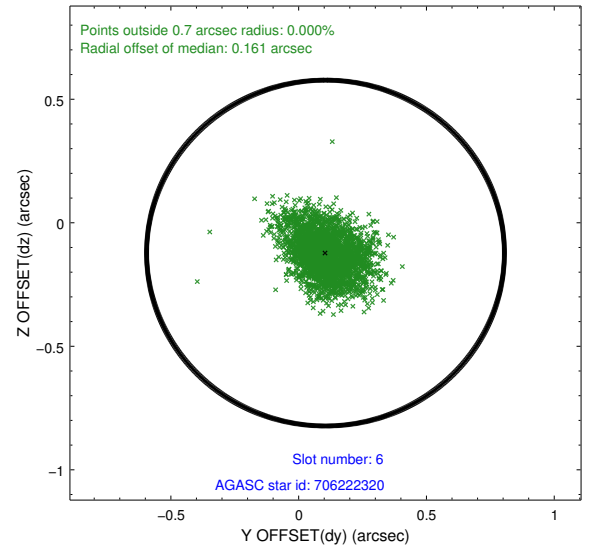
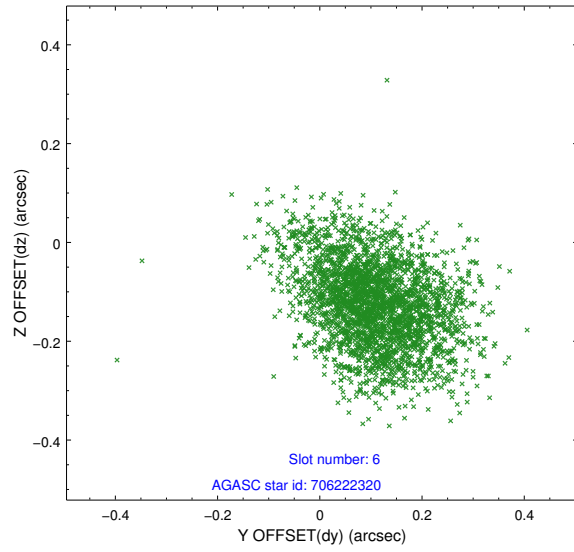
2.4.2 Slot 4



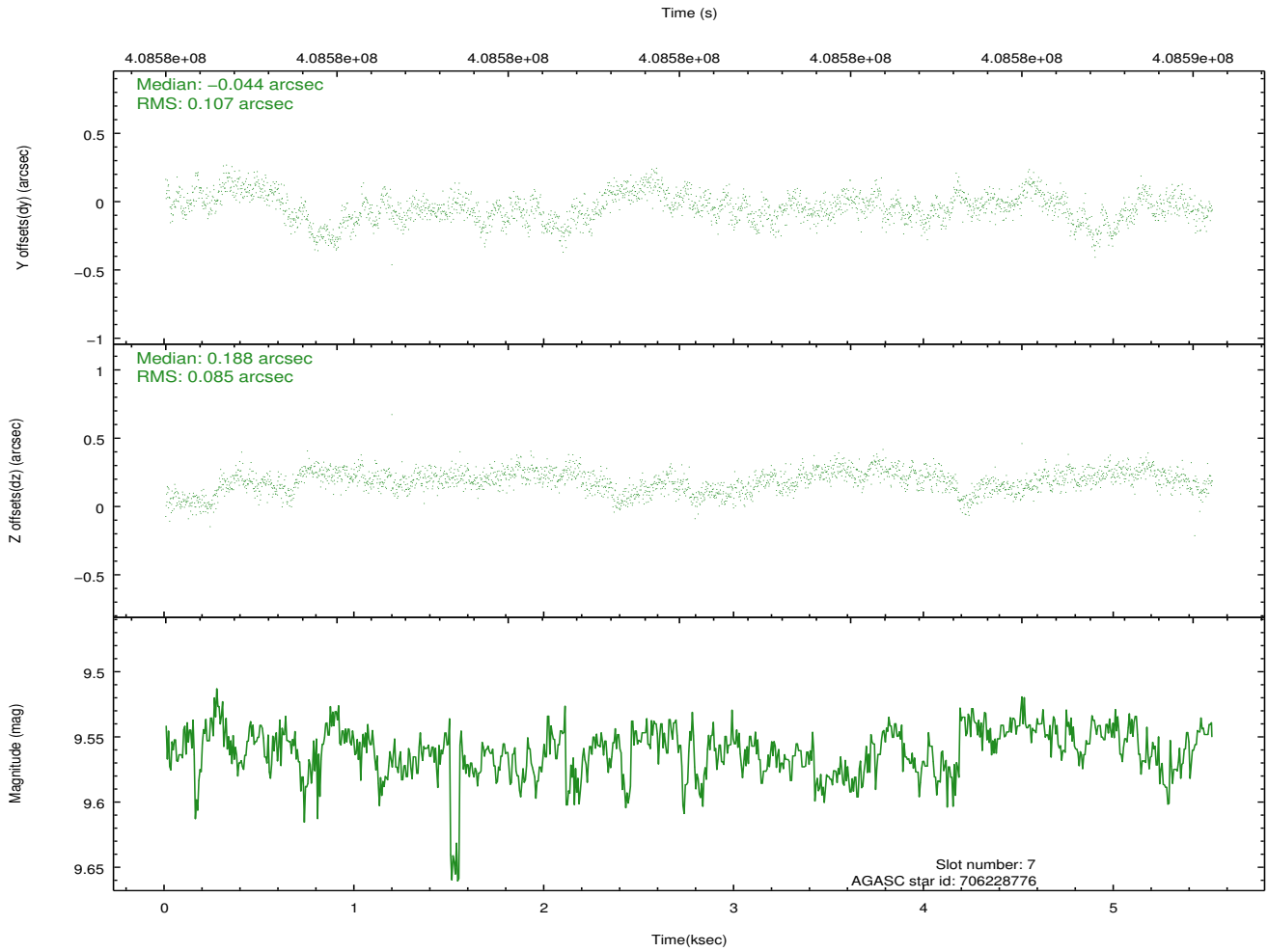
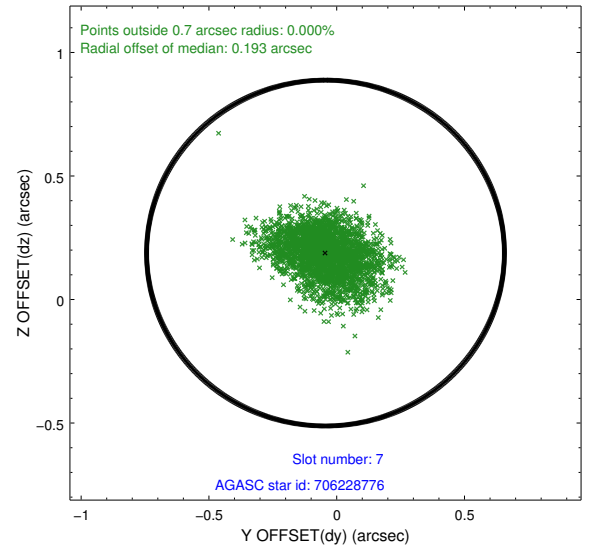
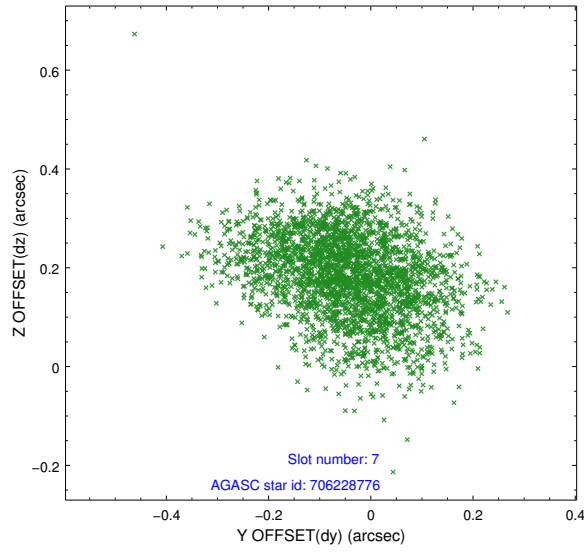
2.4.3 Slot 5



2.4.4 Slot 6

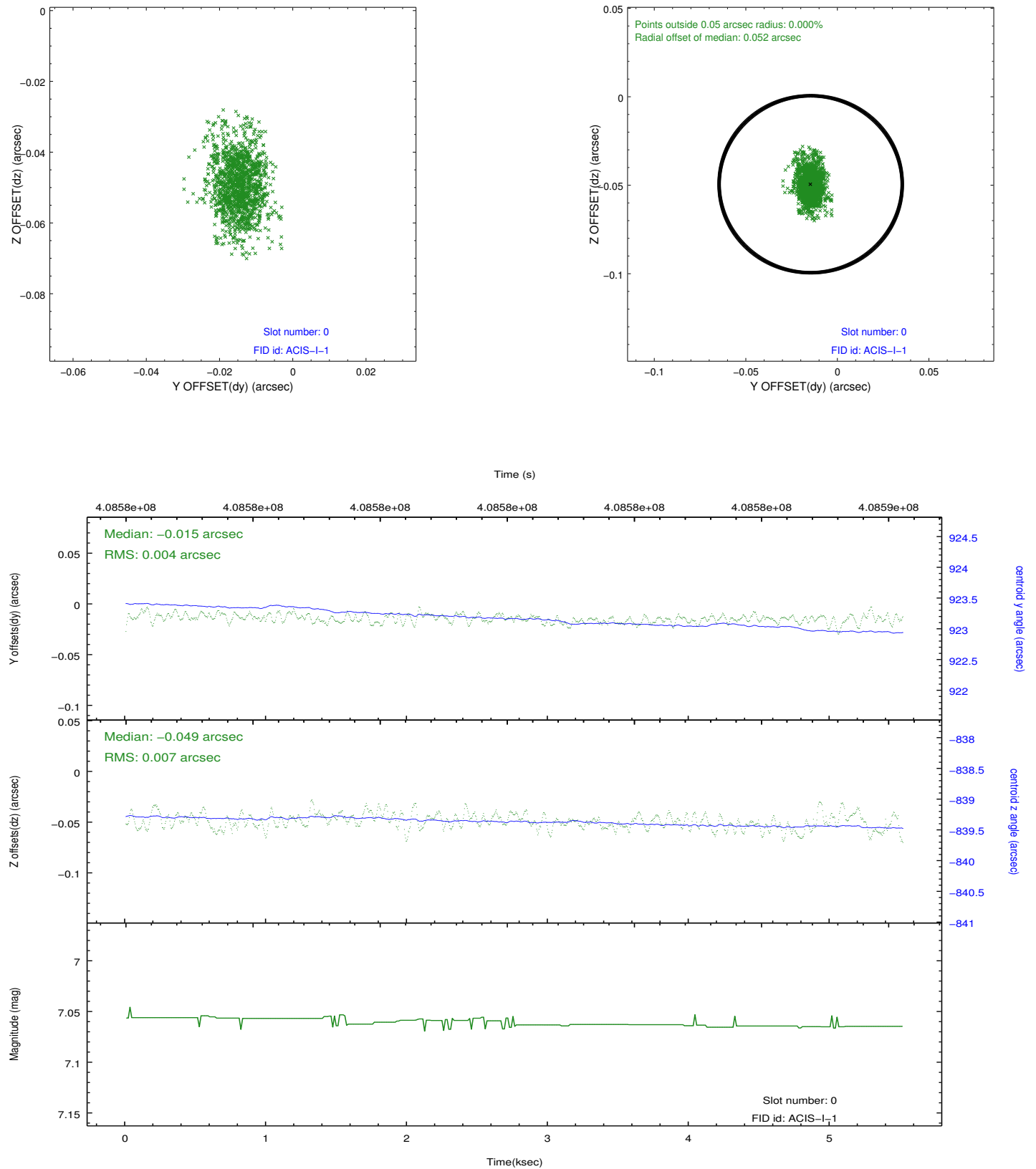


2.4.5 Slot 7

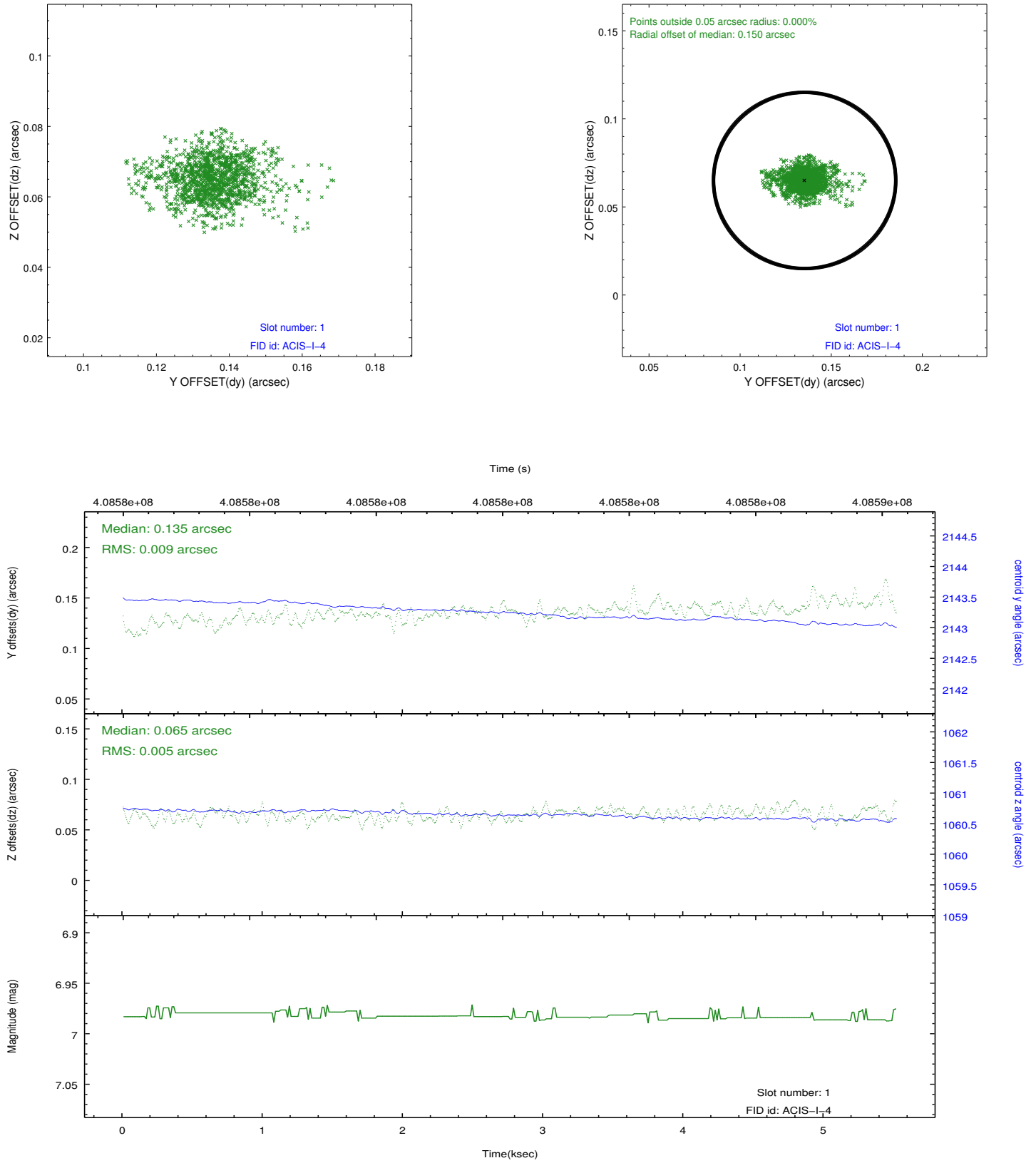


2.5 FID Slots

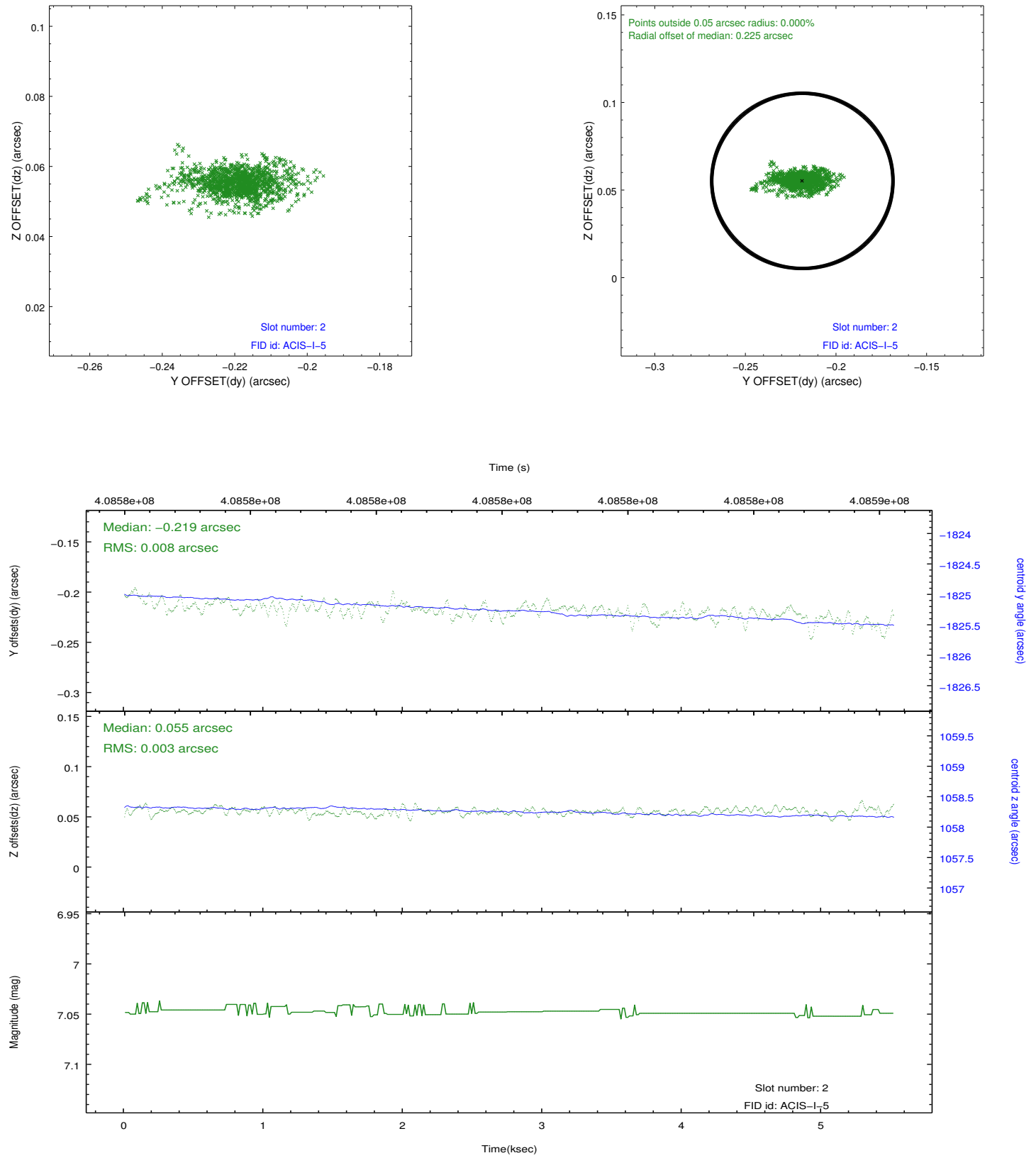
2.5.1 Slot 0



2.5.2 Slot 1



2.5.3 Slot 2



A Summary

A.1 Status

V&V Scientist	Jen Lauer
V&V Date (YYYY-MM-DD)	2012.07.17
V&V Edition	1
V&V Disposition and Status	OK
V&V Charge Time	5.0495999812484

A.2 Comments