

V&V Reference Report

L2 ASCDS Version : 8.4.5

Observation 12243 - L2 Version 2
Chandra X-Ray Center

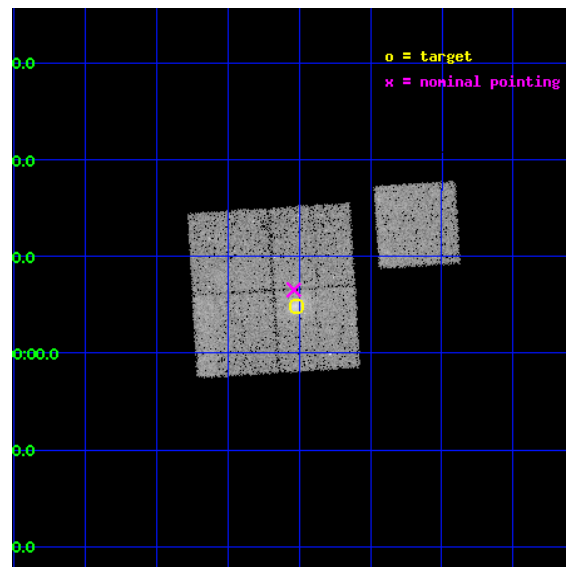
L2 Processing Date : Jul 3 2012

Contents

1	Front	2
2	OBI	3
2.1	OBI	3
2.1.1	Images	3
2.1.2	Bias	3
2.1.3	Parameters	4
2.1.4	Events	4
2.2	Compared Parameters	5
2.3	Aspect	6
2.4	Star Slots	9
2.4.1	Slot 3	9
2.4.2	Slot 4	10
2.4.3	Slot 5	11
2.4.4	Slot 6	12
2.4.5	Slot 7	13
2.5	FID Slots	14
2.5.1	Slot 0	14
2.5.2	Slot 1	15
2.5.3	Slot 2	16
A	Summary	17
A.1	Status	17
A.2	Comments	17

1 Front

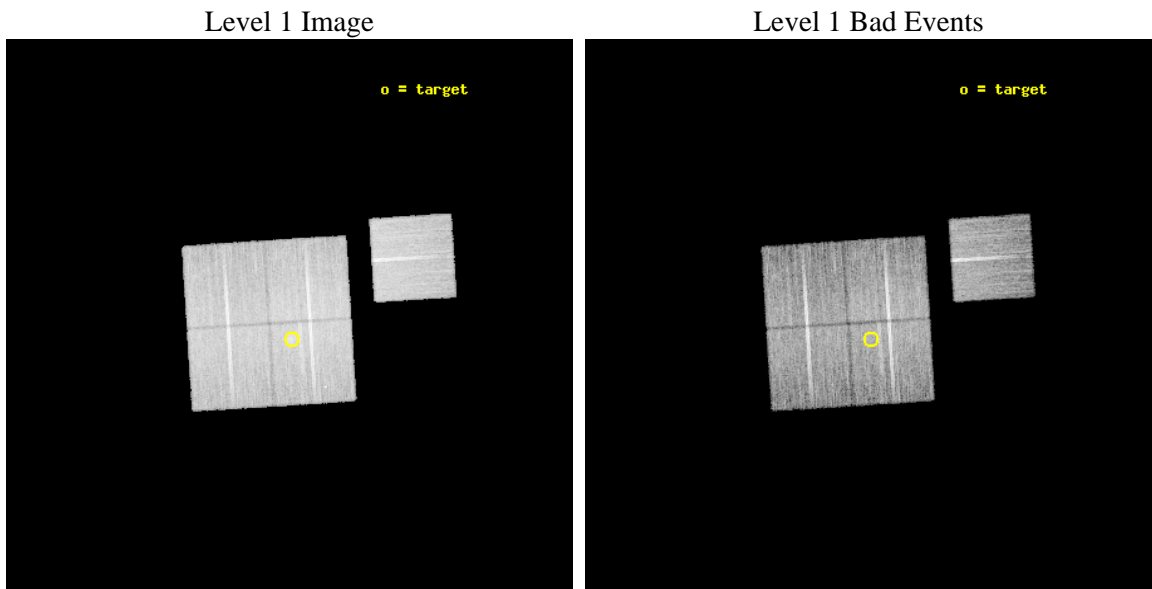
seq_num	800965	Sequence number
obs_id	12243	Observation id
title	The Bullet Cluster Reloaded? An in-depth study of two post-collision cluster mergers	Proposal title
observer	Dr. Harald Ebeling	Principal investigator
object	MACSJ0140.0-0555	Source name
dtcycle	0	
cycle	P	events from which exps? Prim/Second/Both
ra_targ	25.005833	Observer's specified target RA [deg]
dec_targ	-5.918611	Observer's specified target Dec [deg]
ra_nom	25.009389984169	Nominal RA [deg]
dec_nom	-5.8910795080249	Nominal Dec [deg]
roll_nom	86.416450799112	Nominal Roll [deg]
revision	2	Processing version of data
ontime	19551.654651821	Sum of GTIs [s]
livetime	19296.197890076	Livetime [s]
ontime0	19548.390521526	Sum of GTIs [s]
ontime1	19548.431551576	Sum of GTIs [s]
ontime2	19551.613611817	Sum of GTIs [s]
ontime3	19551.654651821	Sum of GTIs [s]
ontime6	19548.349481583	Sum of GTIs [s]
l2events	68705	Number of level 2 events



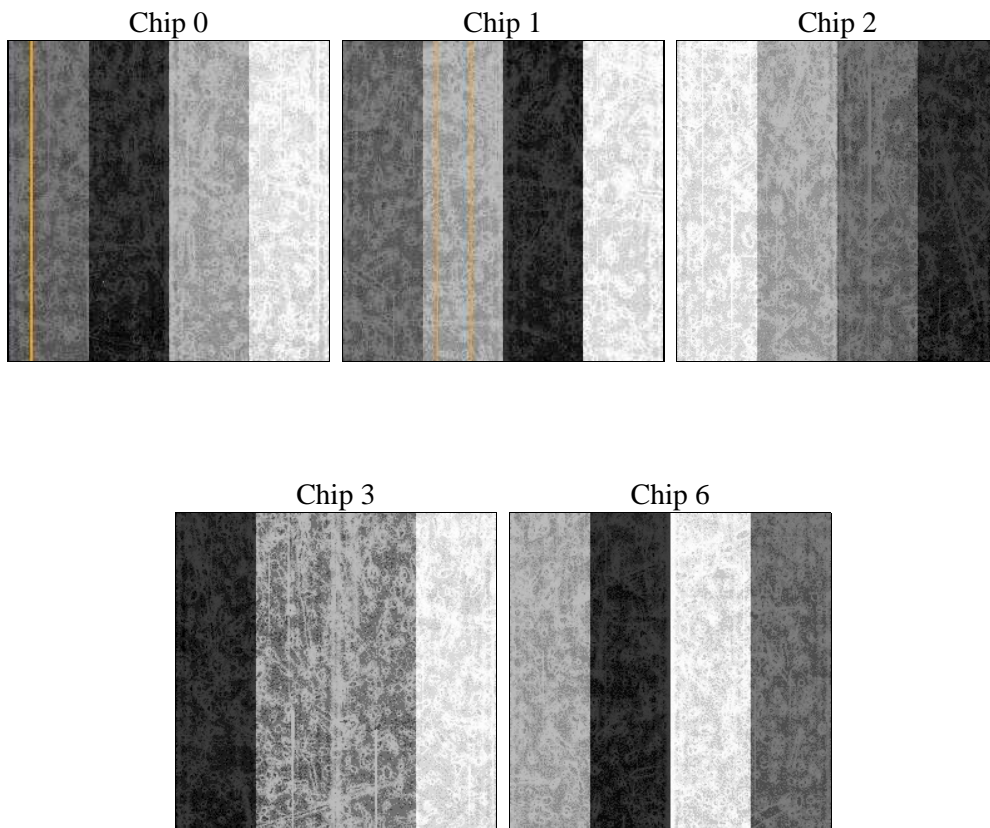
2 OBI

2.1 OBI

2.1.1 Images



2.1.2 Bias



2.1.3 Parameters

obi_num	0	Obi number	sched_exp_time	19496.740000	[s] Scheduled observation exposure time
ascdsver	8.4.5	Processing system revision	ontime	19551.654651821	Sum of GTIs [s]
caldsver	4.5.0	 	ontime0	19548.390521526	Sum of GTIs [s]
date	2012-07-03T08:09:12	Date and time of file creation	ontime1	19548.431551576	Sum of GTIs [s]
revision	2	Processing version of data	ontime2	19551.613611817	Sum of GTIs [s]
			ontime3	19551.654651821	Sum of GTIs [s]
			ontime6	19548.349481583	Sum of GTIs [s]
			l1events	690416	Number of level 1 events

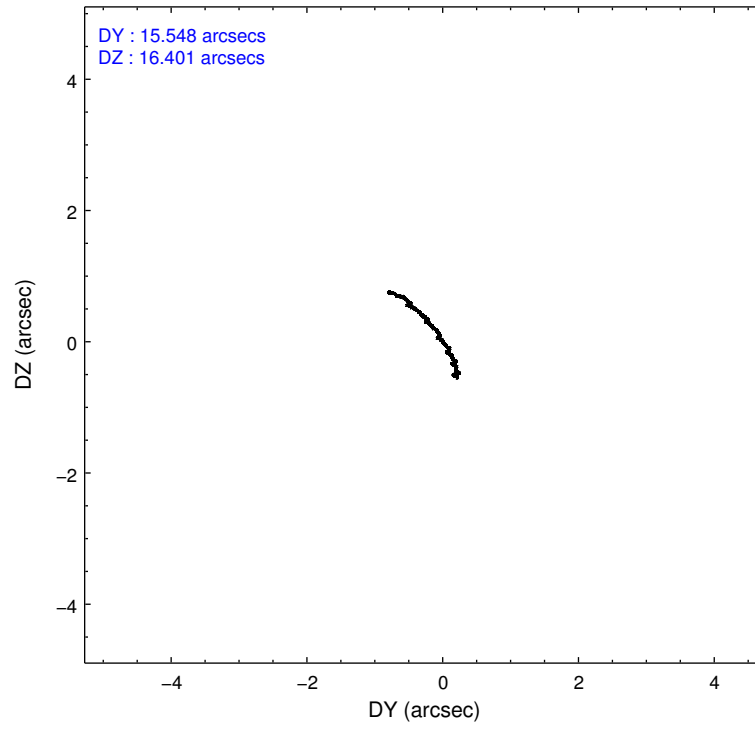
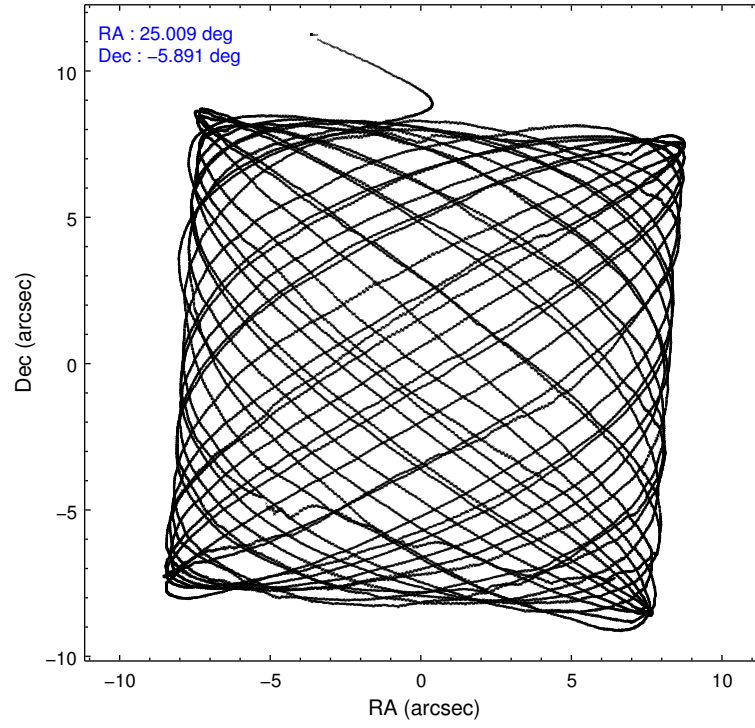
2.1.4 Events

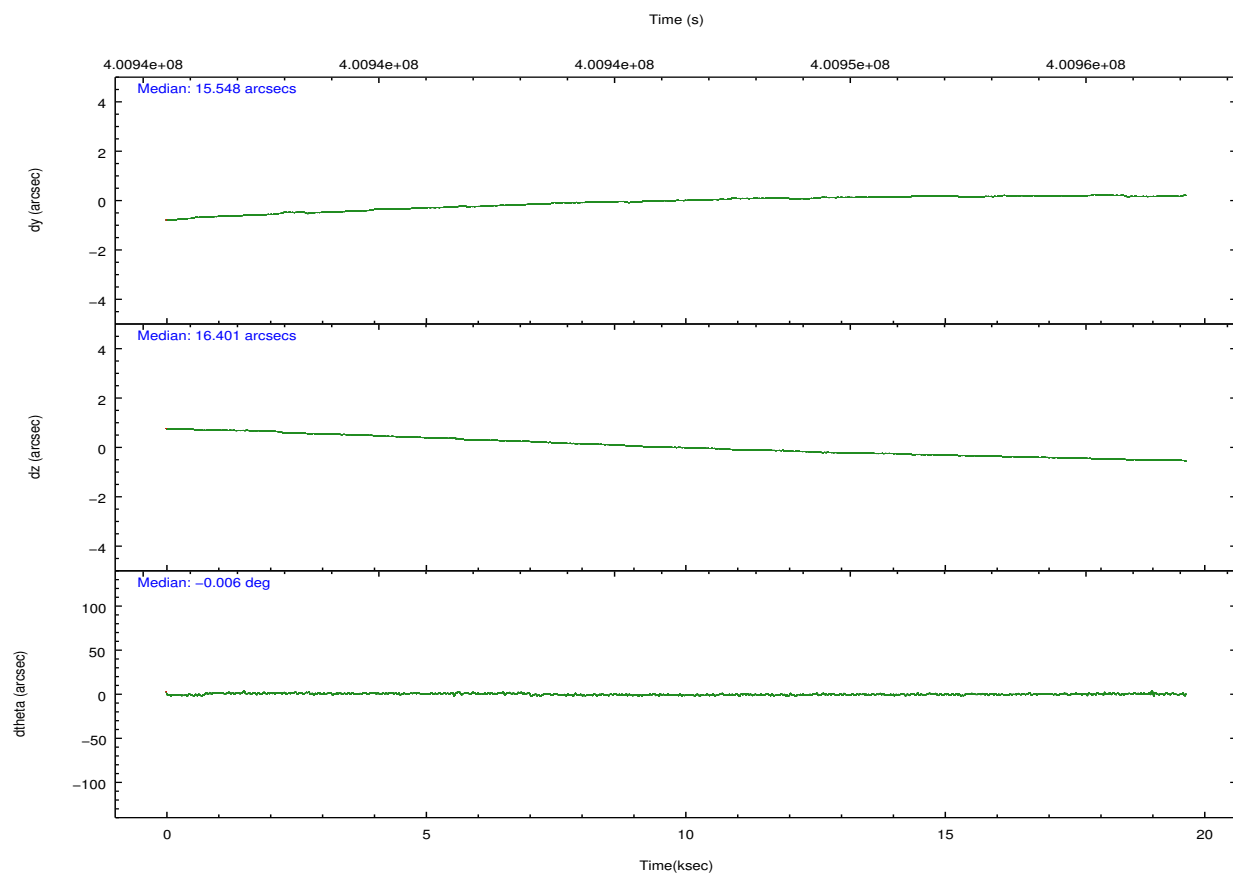
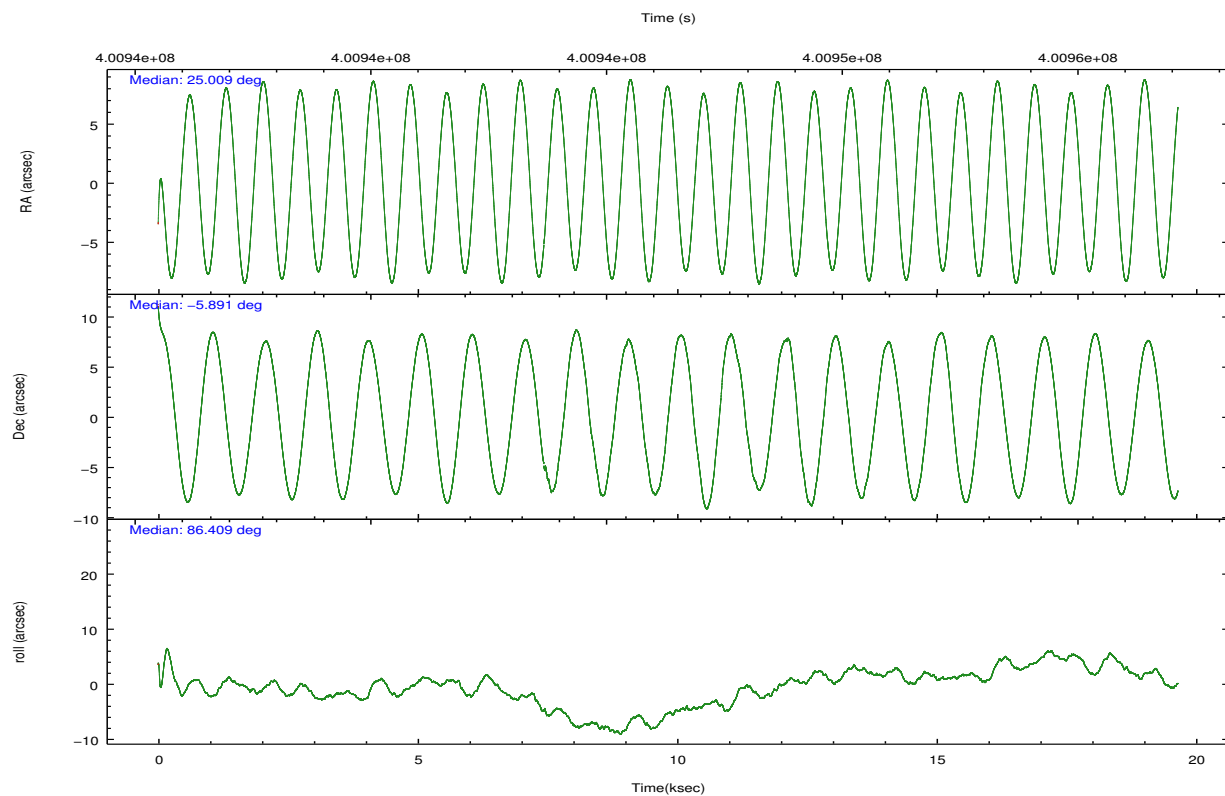
	ccd 0	ccd 1	ccd 2	ccd 3	ccd 6		ccd 0	ccd 1	ccd 2	ccd 3	ccd 6
level 1 events	127209	132031	146621	144306	140249	grade 0 events	5274	5955	5446	8026	5327
rejected events	111677	114912	131312	126343	124636		4%	4%	3%	5%	3%
rejected %	87%	87%	89%	87%	88%	grade 1 events	78	93	98	97	80
							0%	0%	0%	0%	0%
						grade 2 events	3927	4092	3762	3458	3475
							3%	3%	2%	2%	2%
						grade 3 events	1690	1780	1533	1719	1723
							1%	1%	1%	1%	1%
						grade 4 events	1586	1742	1566	1730	1641
							1%	1%	1%	1%	1%
						grade 5 events	5757	6253	5410	6556	6473
							4%	4%	3%	4%	4%
						grade 6 events	3056	3552	3002	3031	3450
							2%	2%	2%	2%	2%
						grade 7 events	105841	108564	125804	119689	118080
							83%	82%	85%	82%	84%

2.2 Compared Parameters

Parameter	Planned	Actual	Parameter	Planned	Actual
Instrument	ACIS	ACIS	Obspar format version number	7	7
Detector	ACIS-01236	ACIS-01236	Obspar file type	PREDICTED	ACTUAL
Grating	NONE	NONE	Obspar update status	NONE	UPDATED
Data mode	VFAINT	VFAINT	Number of optional ACIS chips dropped	0	0
Observation mode	POINTING	POINTING	On-chip summing requested	N	N
[deg] Pointing RA	25.021809	25.00938998416941	Subarray requested	NONE	NONE
[deg] Pointing Dec	-5.915654	-5.891079508024911	Alternating exposures requested	N	N
[deg] Pointing Roll	86.209036	86.41645079911179	[s] Primary exposure time	0.000000	3.1
[mm] SIM focus pos	-0.782348	-0.7809083437167272			
[mm] SIM defocus	0	0.001439871863259334			
[mm] SIM translation stage pos	-229.442463	-229.4438428438578			
[mm] SIM translation stage offset	-4.15	-4.148610159071865			
[s] Observation start time (MET)	400936620.184000	400935480.75668			
Observation start date	2010-09-15T11:15:54	2010-09-15T10:58:00			
[s] Observation end time (MET)	400956117.184000	400956352.83275			
Observation end date	2010-09-15T16:40:51	2010-09-15T16:45:52			
Read mode	TIMED	TIMED			

2.3 Aspect



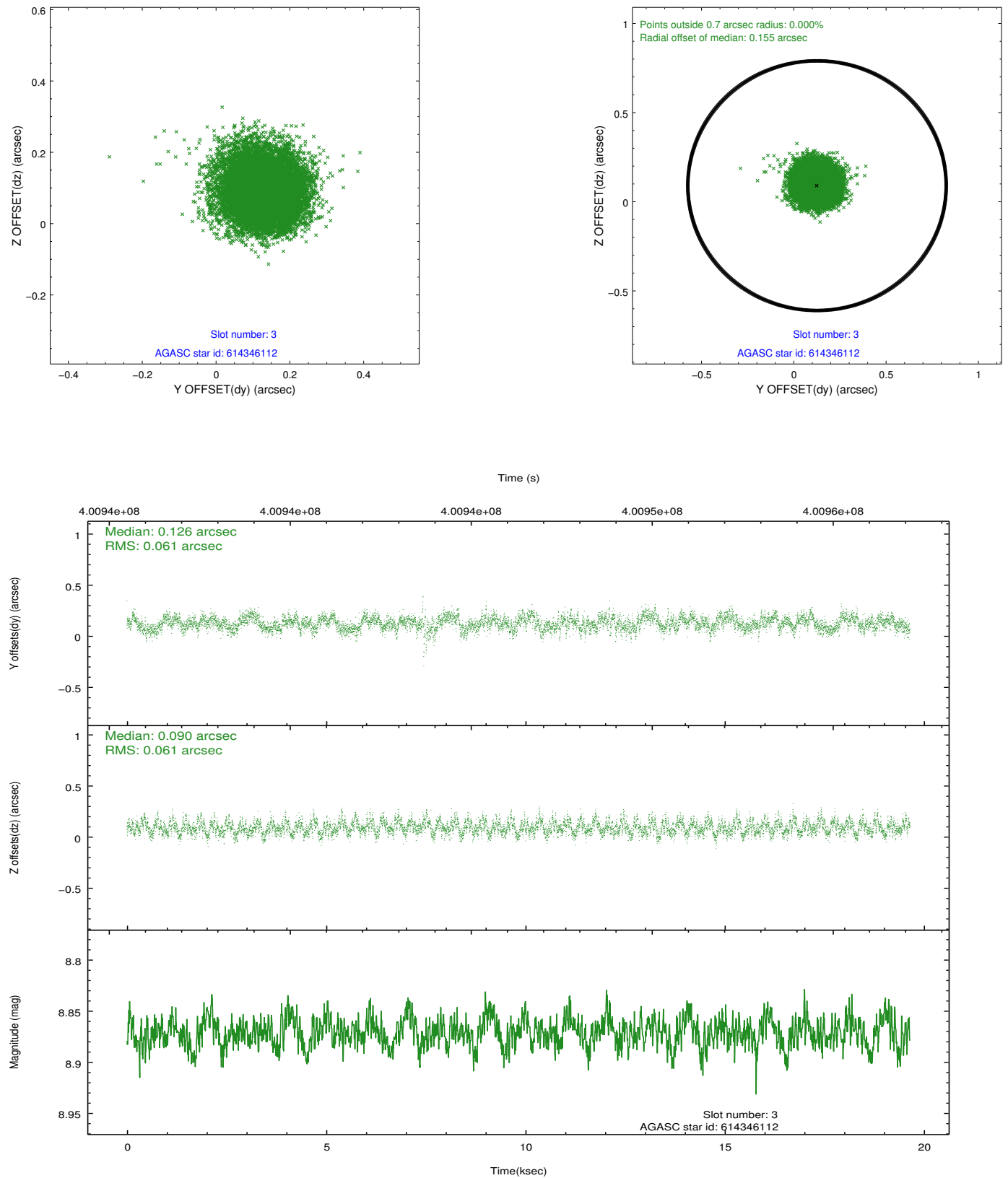


Slot Statistics

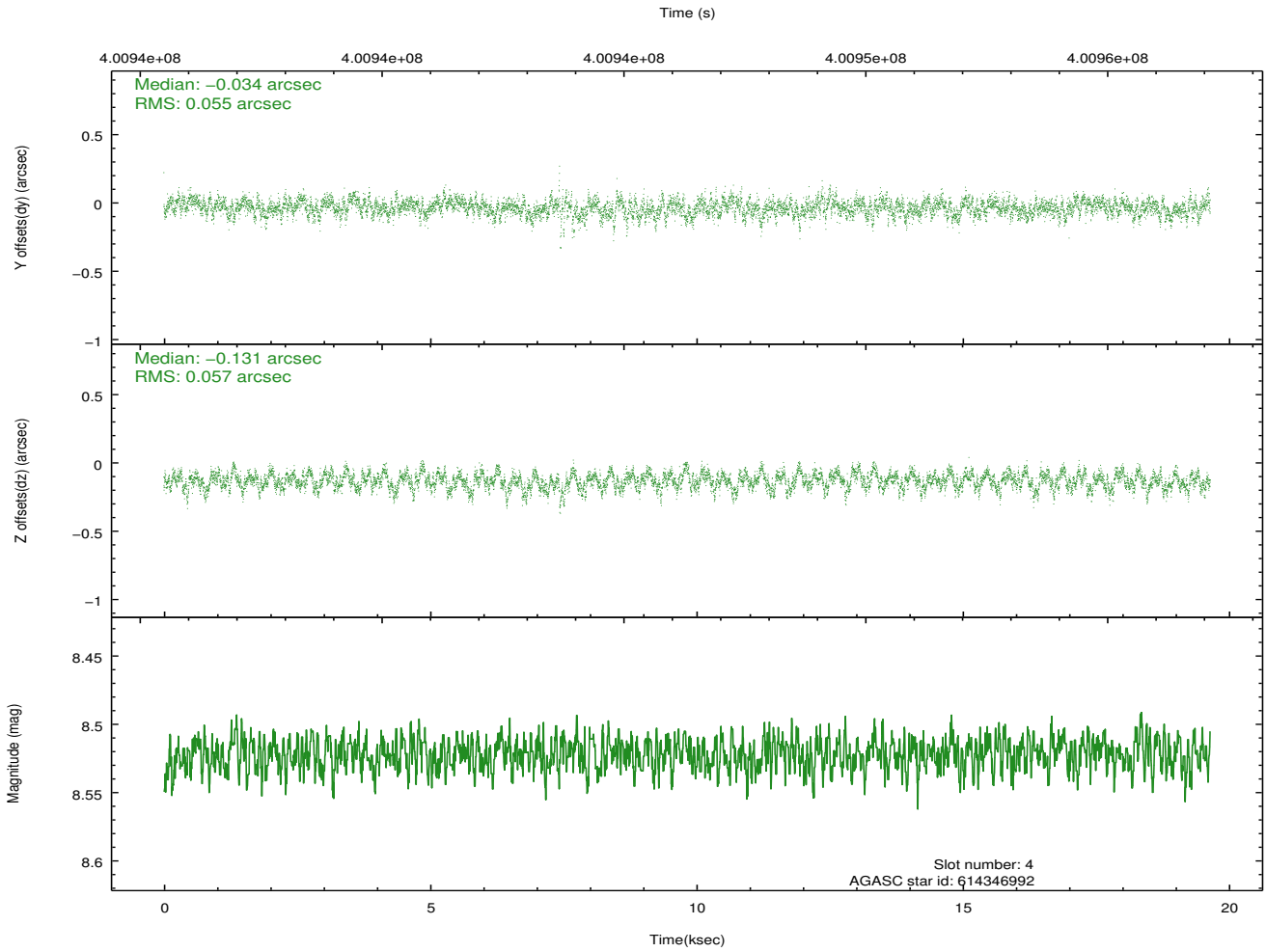
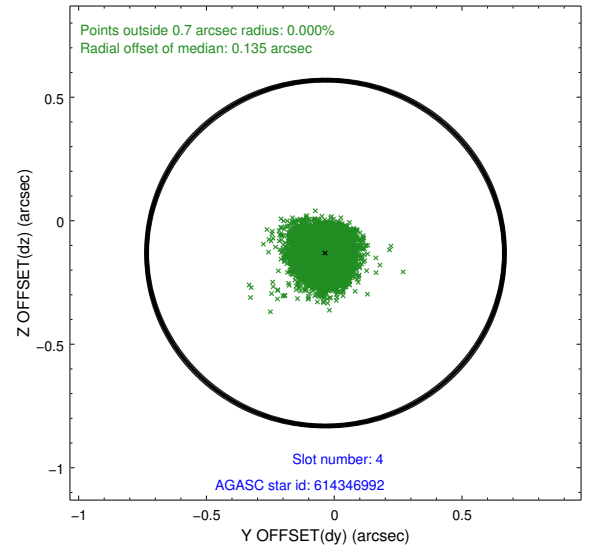
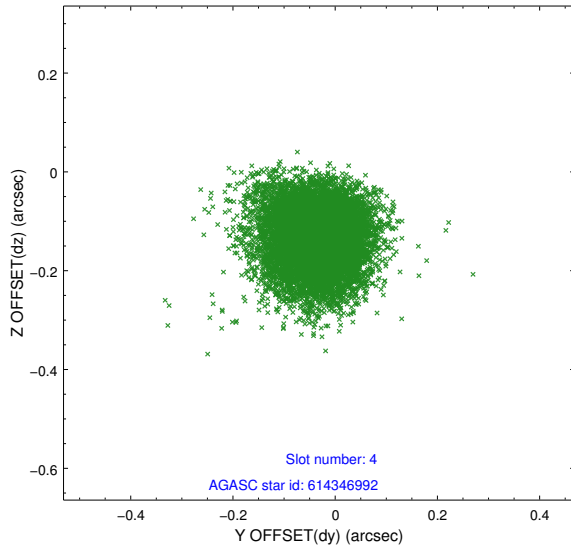
slot	status	id	mag	n_pts	med_dy	med_dz	dr1	dr2	ra	dec	mean_y	mean_z
0	FID	ACIS-I-1	7.02	4794	-0.073	-0.075	0.018	0.034	0.000000	0.000000	923.90	-925.22
1	FID	ACIS-I-4	6.94	4793	-0.040	0.116	0.014	0.027	0.000000	0.000000	2143.73	975.24
2	FID	ACIS-I-6	7.02	4793	0.014	0.025	0.012	0.019	0.000000	0.000000	389.99	1616.94
3	GUIDE	614346112	8.87	9575	0.126	0.090	0.092	0.146	25.317381	-6.037294	-366.80	-1085.00
4	GUIDE	614346992	8.52	9583	-0.034	-0.131	0.083	0.137	25.244875	-5.403615	1891.98	-675.12
5	GUIDE	614350824	9.51	9573	-0.230	-0.225	0.138	0.212	24.504265	-5.663226	783.33	1909.90
6	GUIDE	614351496	8.14	9584	0.029	0.181	0.074	0.119	25.217205	-6.162663	-840.89	-756.26
7	GUIDE	614351744	9.33	9574	0.110	0.084	0.124	0.193	25.201325	-5.984188	-203.44	-657.90

2.4 Star Slots

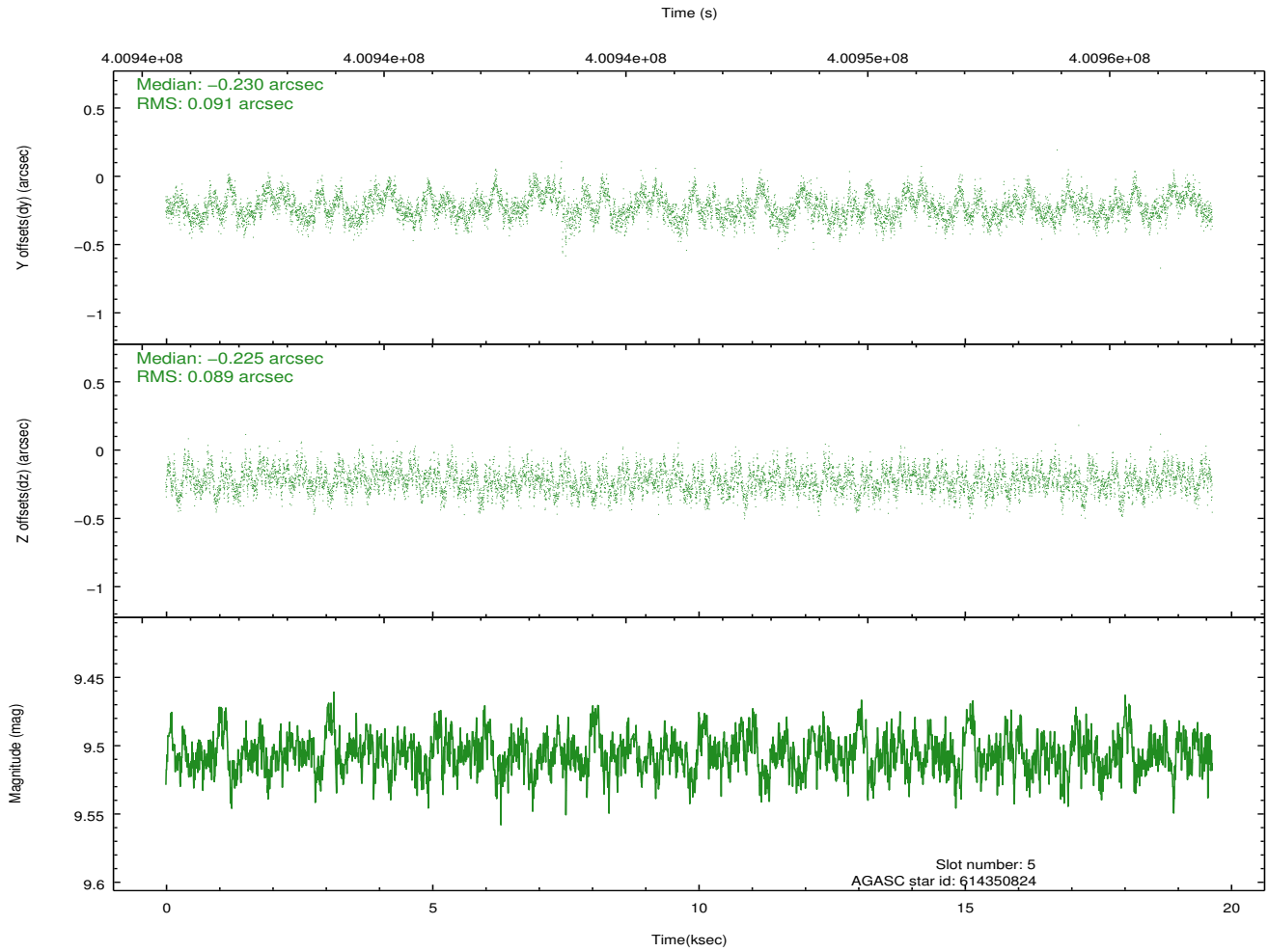
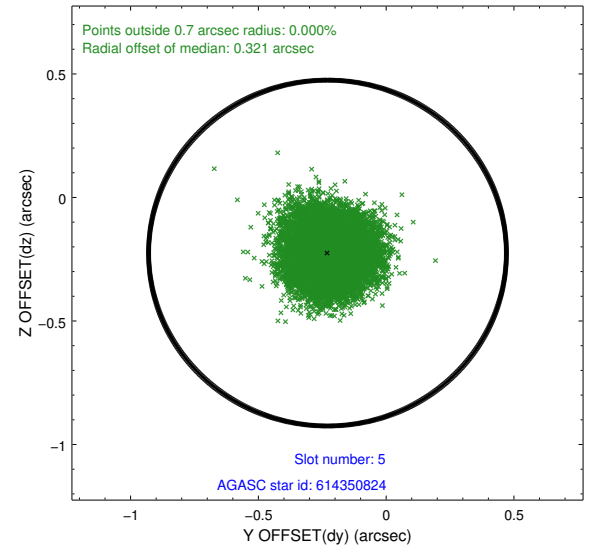
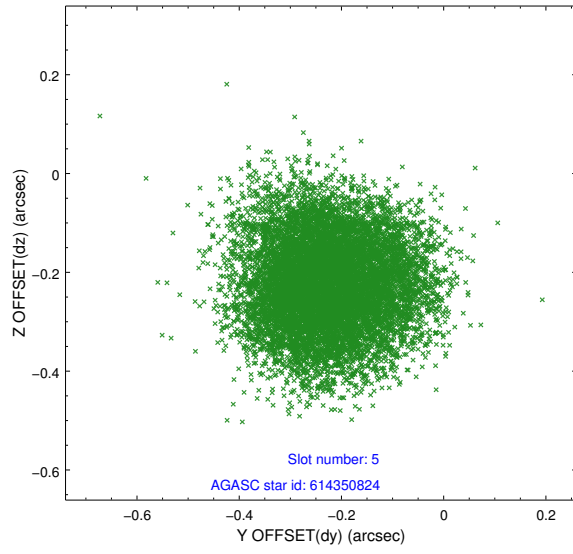
2.4.1 Slot 3



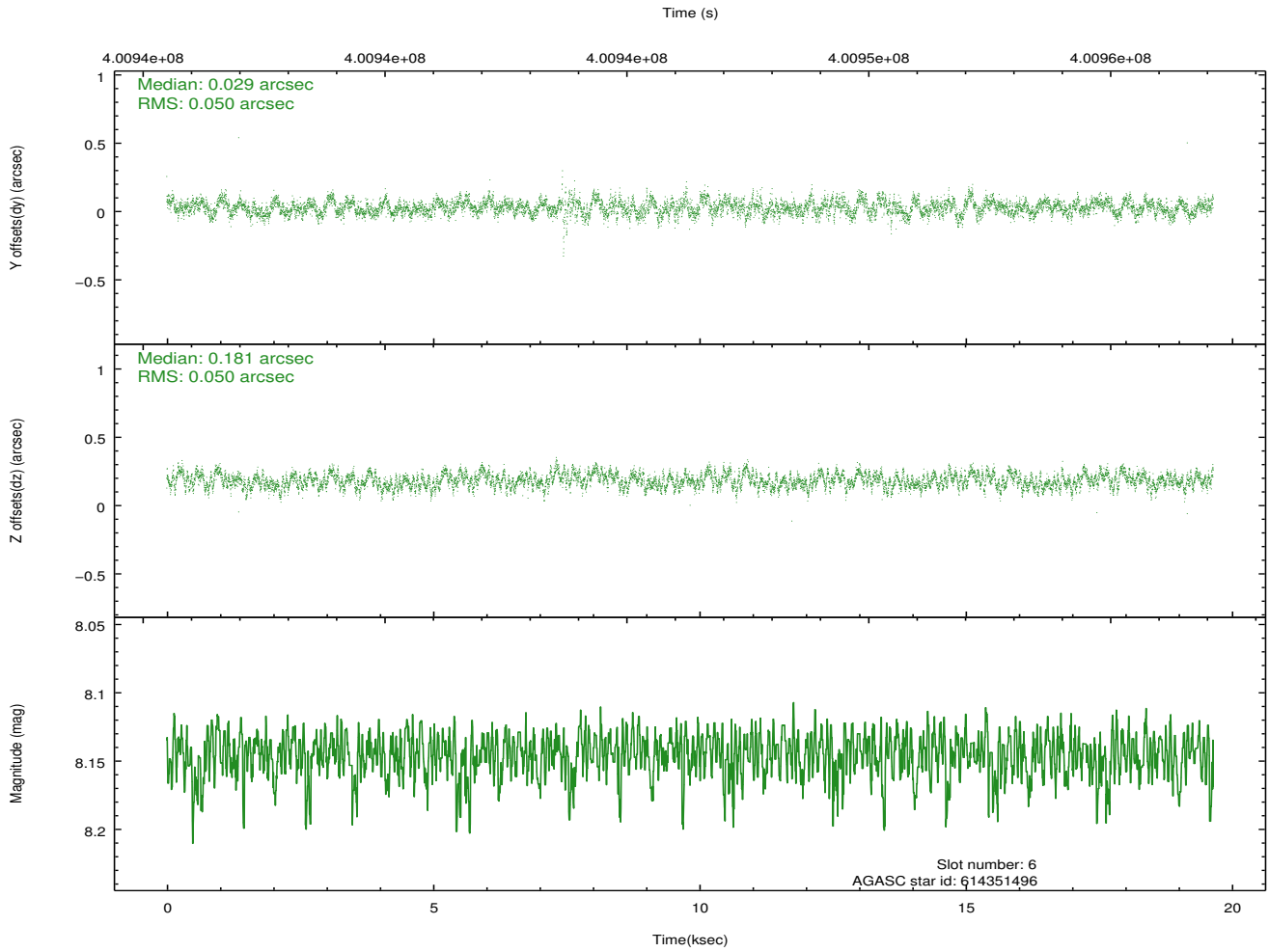
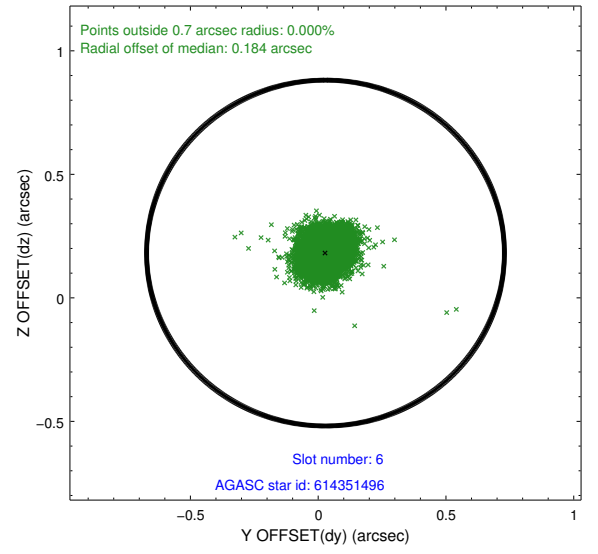
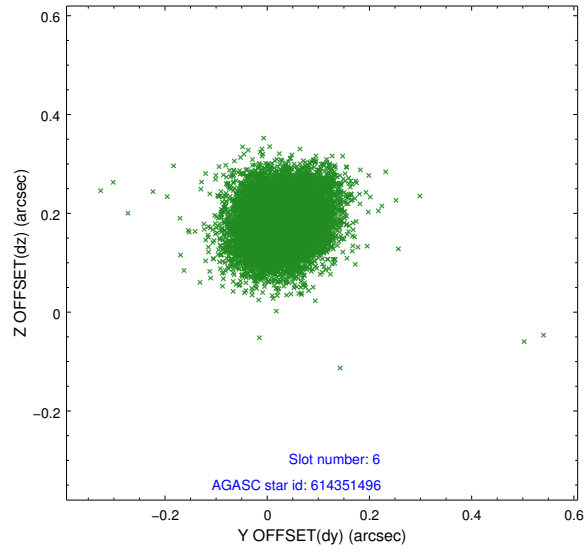
2.4.2 Slot 4



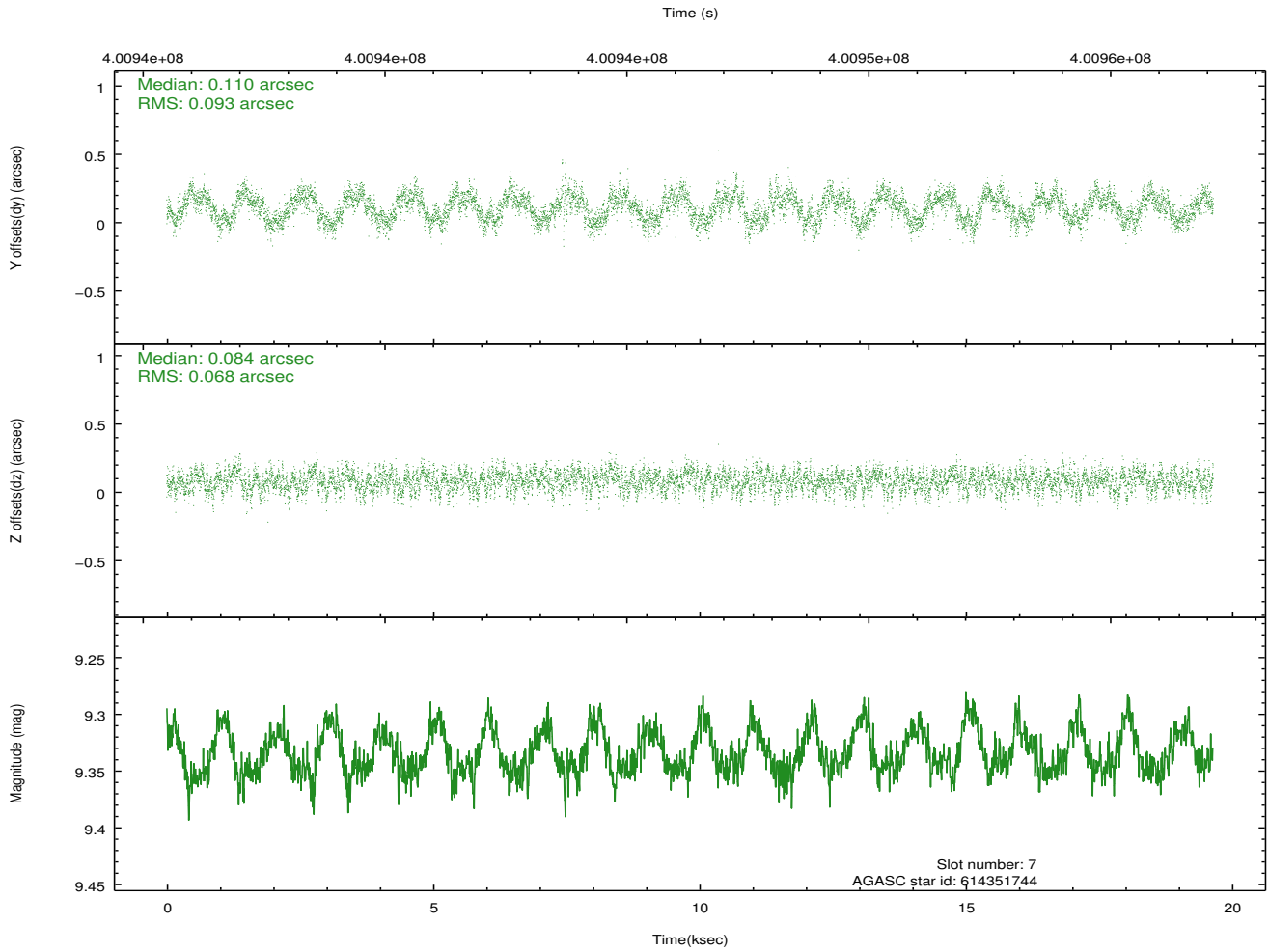
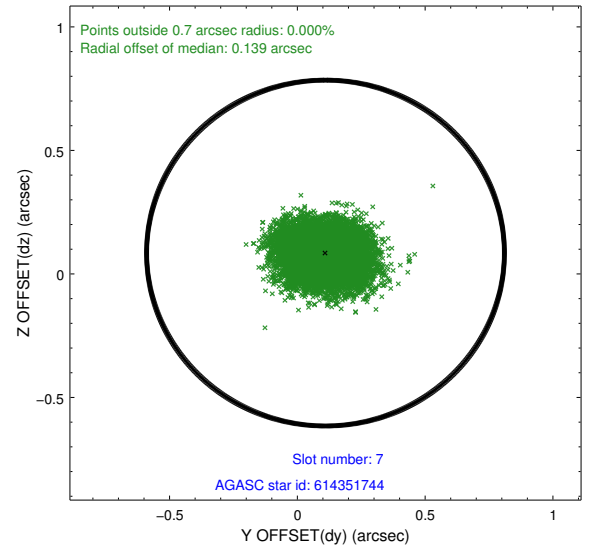
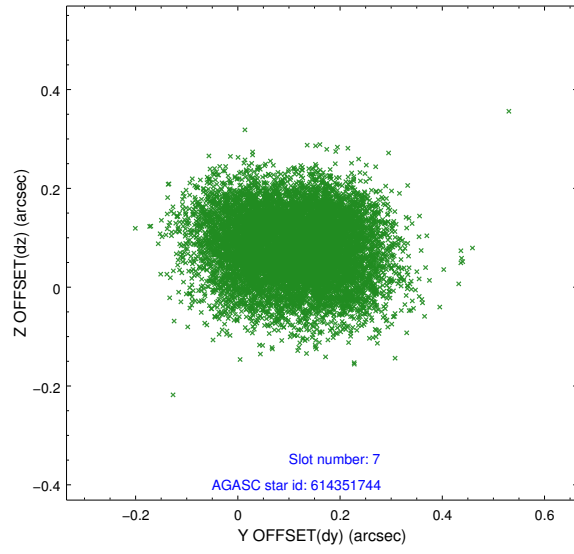
2.4.3 Slot 5



2.4.4 Slot 6

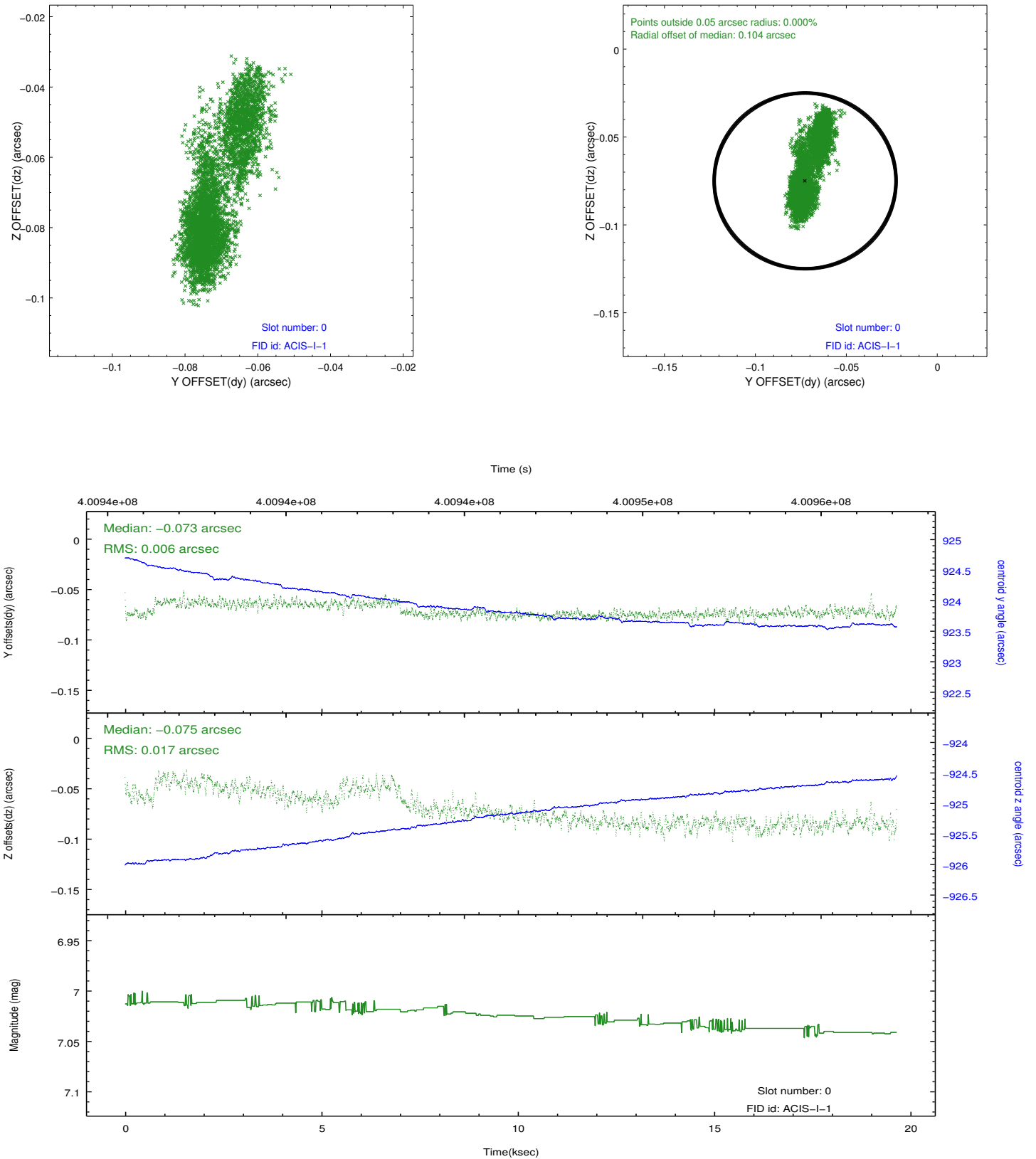


2.4.5 Slot 7

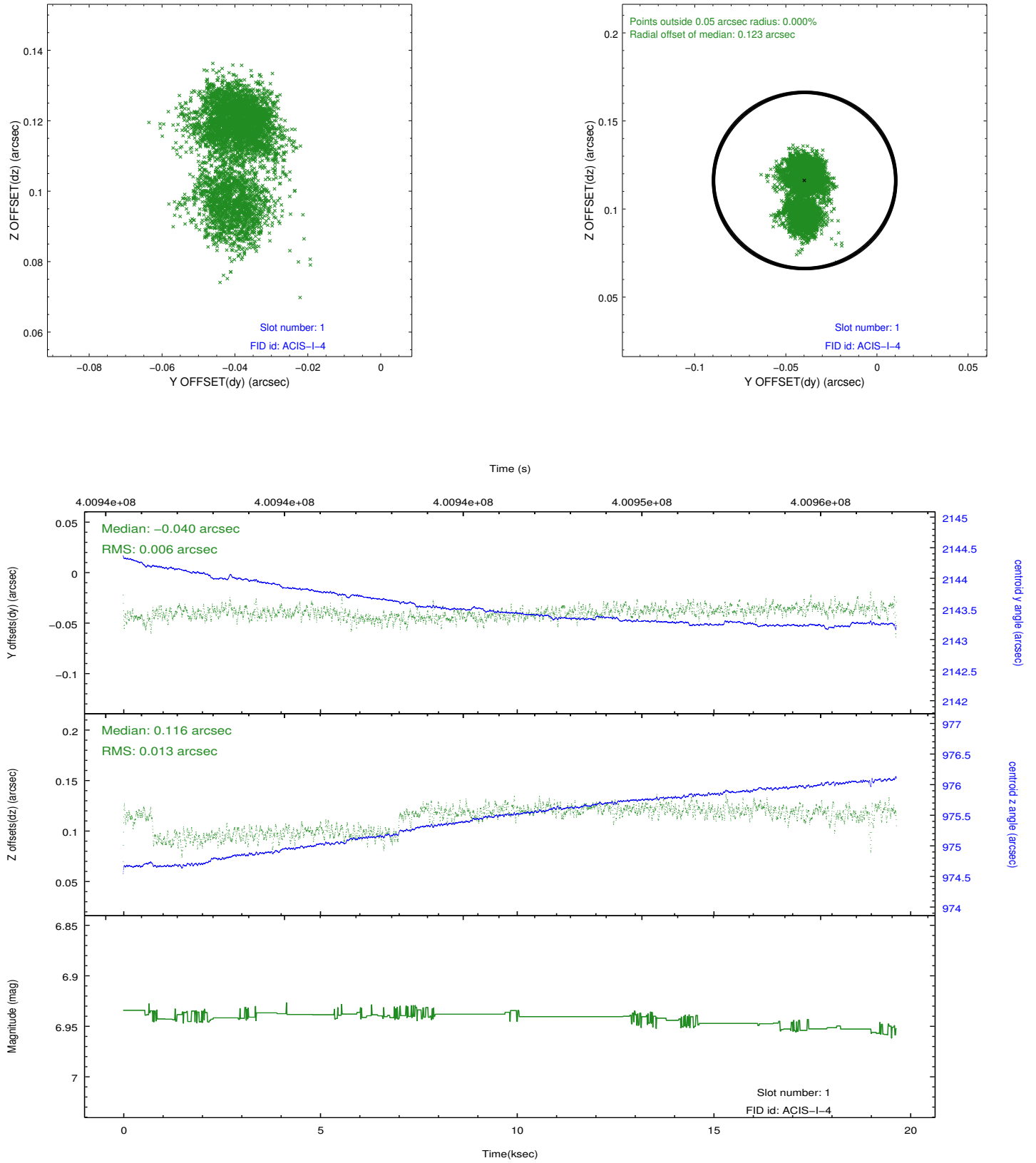


2.5 FID Slots

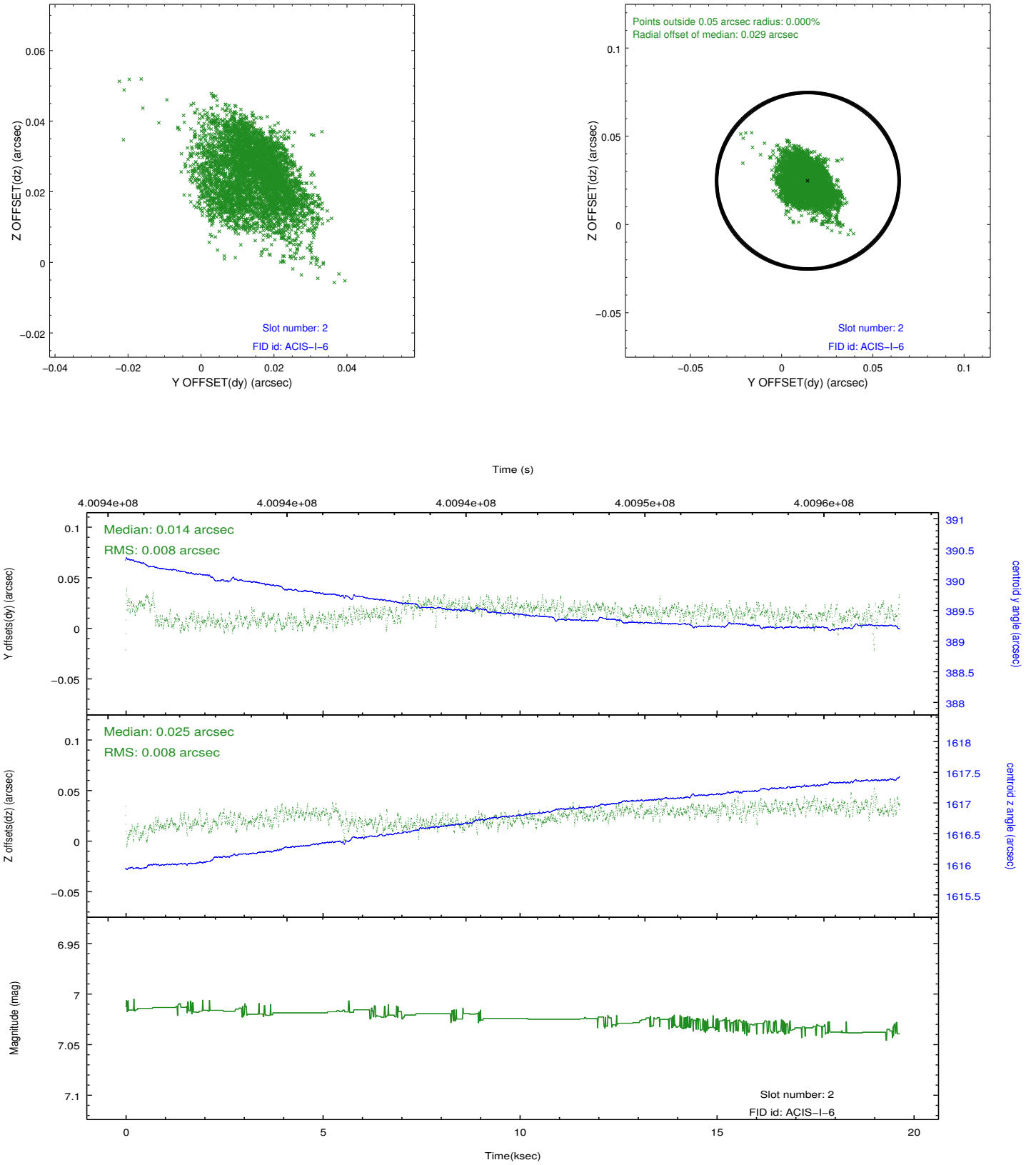
2.5.1 Slot 0



2.5.2 Slot 1



2.5.3 Slot 2



A Summary

A.1 Status

V&V Scientist	Jen Lauer
V&V Date (YYYY-MM-DD)	2012.07.11
V&V Edition	1
V&V Disposition and Status	OK
V&V Charge Time	19.551654655159

A.2 Comments

Joint proposal with HST.