

V&V Reference Report

L2 ASCDS Version : 8.4.5

Observation 12143 - L2 Version 2
Chandra X-Ray Center

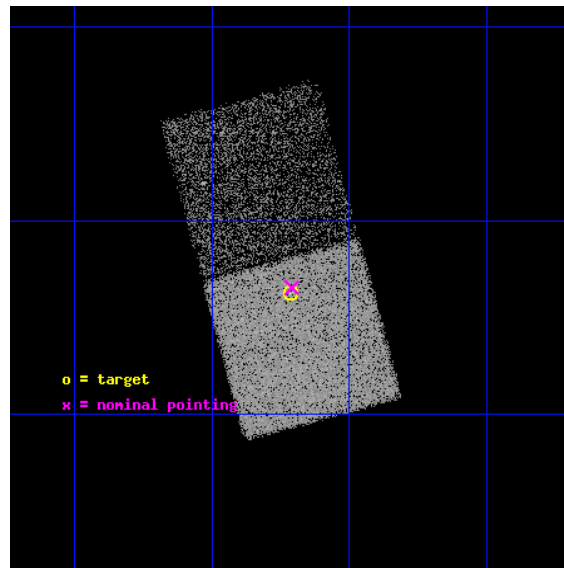
L2 Processing Date : Jul 4 2012

Contents

1	Front	2
2	OBI	3
2.1	OBI	3
2.1.1	Images	3
2.1.2	Bias	3
2.1.3	Parameters	4
2.1.4	Events	4
2.2	Compared Parameters	5
2.3	Aspect	6
2.4	Star Slots	9
2.4.1	Slot 3	9
2.4.2	Slot 4	10
2.4.3	Slot 5	11
2.4.4	Slot 6	12
2.4.5	Slot 7	13
2.5	FID Slots	14
2.5.1	Slot 0	14
2.5.2	Slot 1	15
2.5.3	Slot 2	16
A	Summary	17
A.1	Status	17
A.2	Comments	17

1 Front

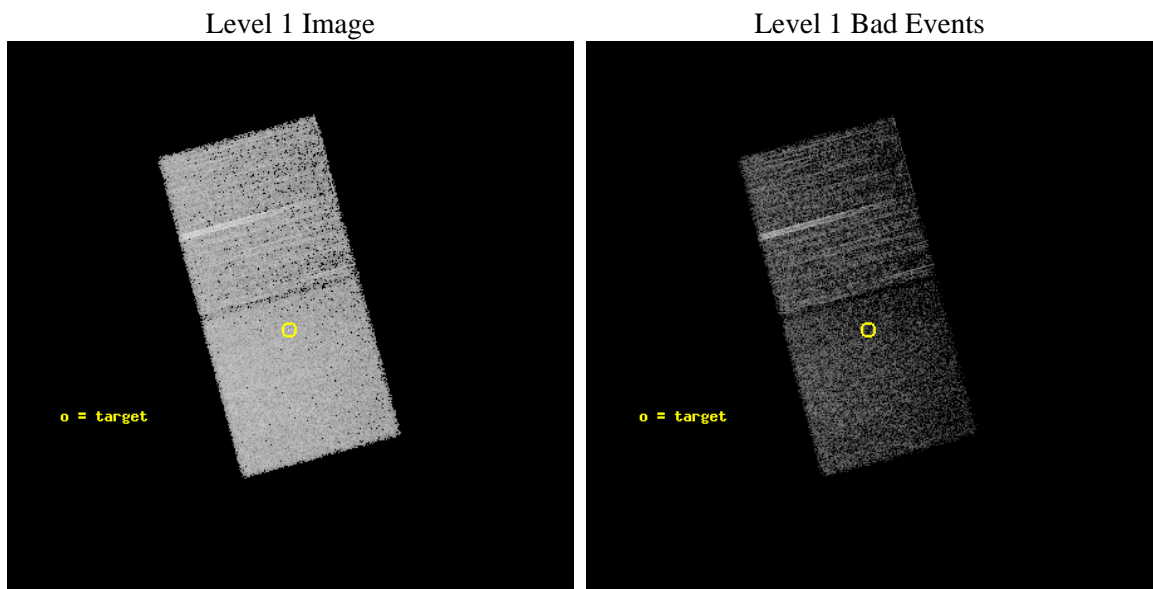
seq_num	401139	Sequence number
obs_id	12143	Observation id
title	Chandra follow-up of X-ray sources in interacting galaxies	Proposa
observer	Dr Jelle Kaastra	Principal investigator
object	SDSSJ085312.3+162619	Source name
dtcycle	0	
cycle	P	events from which exps? Prim/Second/Both
ra_targ	133.30375	Observer's specified target RA [deg]
dec_targ	16.437639	Observer's specified target Dec [deg]
ra_nom	133.3023459695	Nominal RA [deg]
dec_nom	16.442289897793	Nominal Dec [deg]
roll_nom	74.90758085947	Nominal Roll [deg]
revision	2	Processing version of data
ontime	10068.0	Sum of GTIs [s]
livetime	9932.1284823613	Livetime [s]
ontime6	10068.0	Sum of GTIs [s]
ontime7	10068.0	Sum of GTIs [s]
l2events	46794	Number of level 2 events



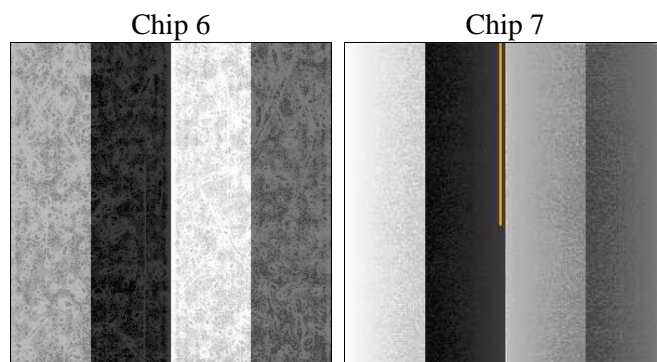
2 OBI

2.1 OBI

2.1.1 Images



2.1.2 Bias



2.1.3 Parameters

obi_num	0	Obi number	sched_exp_time	10000.000000	[s] Scheduled observation exposure time
ascdsver	8.4.5	Processing system revision	ontime	10068.0	Sum of GTIs [s]
caldsver	4.5.0	 	ontime6	10068.0	Sum of GTIs [s]
date	2012-07-04T15:29:37	Date and time of file creation	ontime7	10068.0	Sum of GTIs [s]
revision	2	Processing version of data	l1events	161962	Number of level 1 events

2.1.4 Events

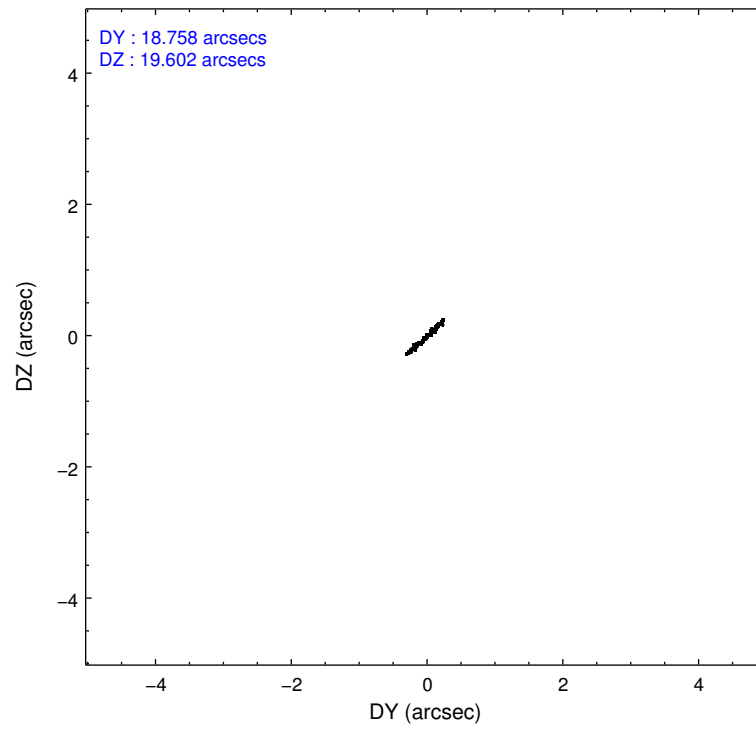
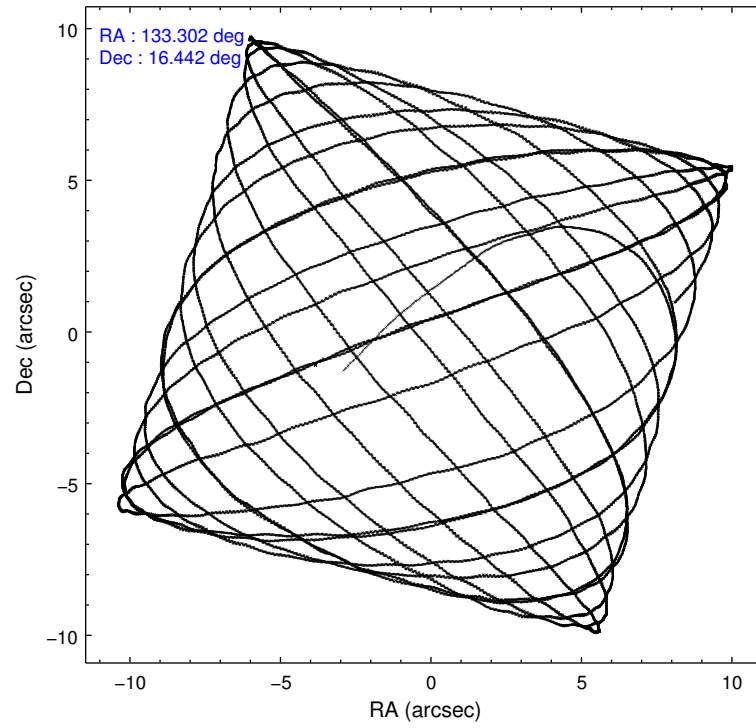
	ccd 6	ccd 7
level 1 events	72425	89537
rejected events	64154	48990
rejected %	88%	54%

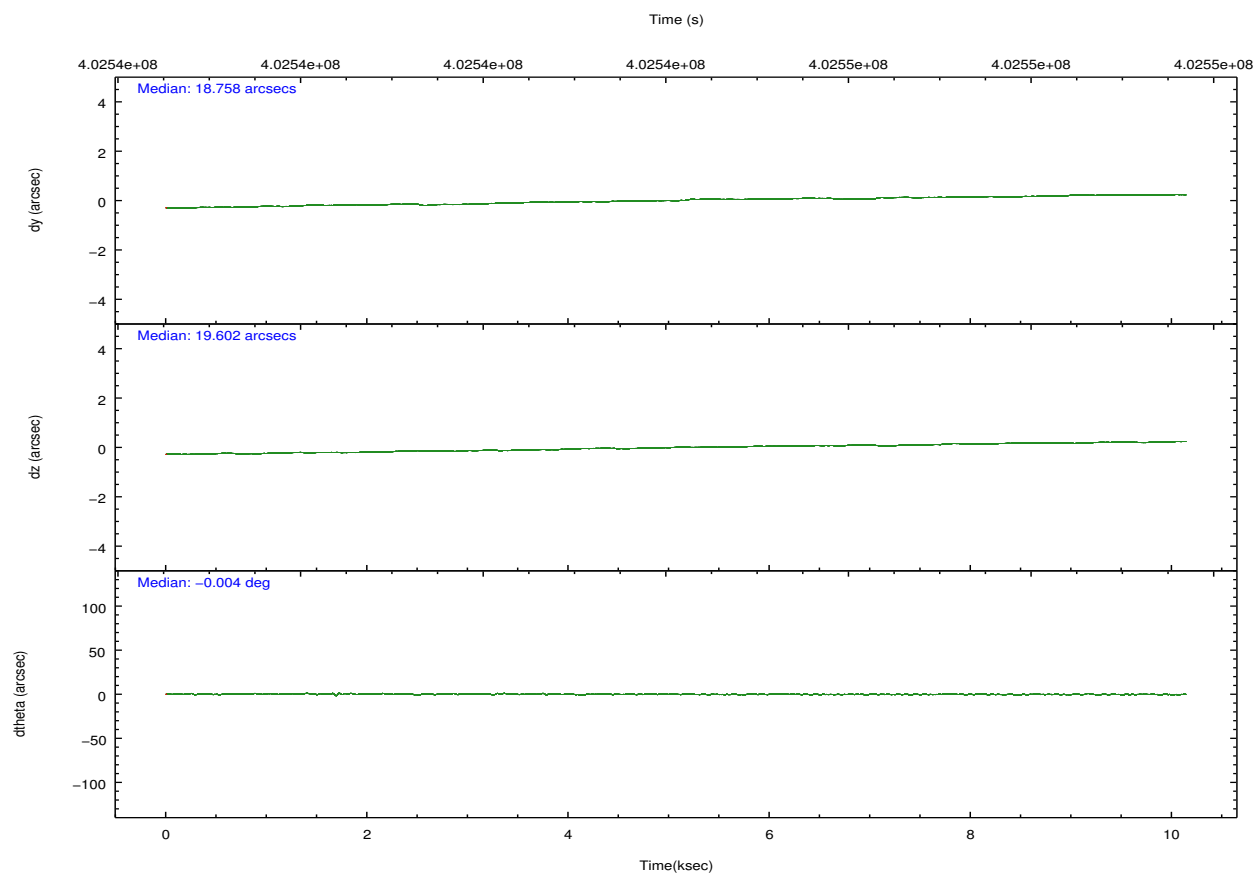
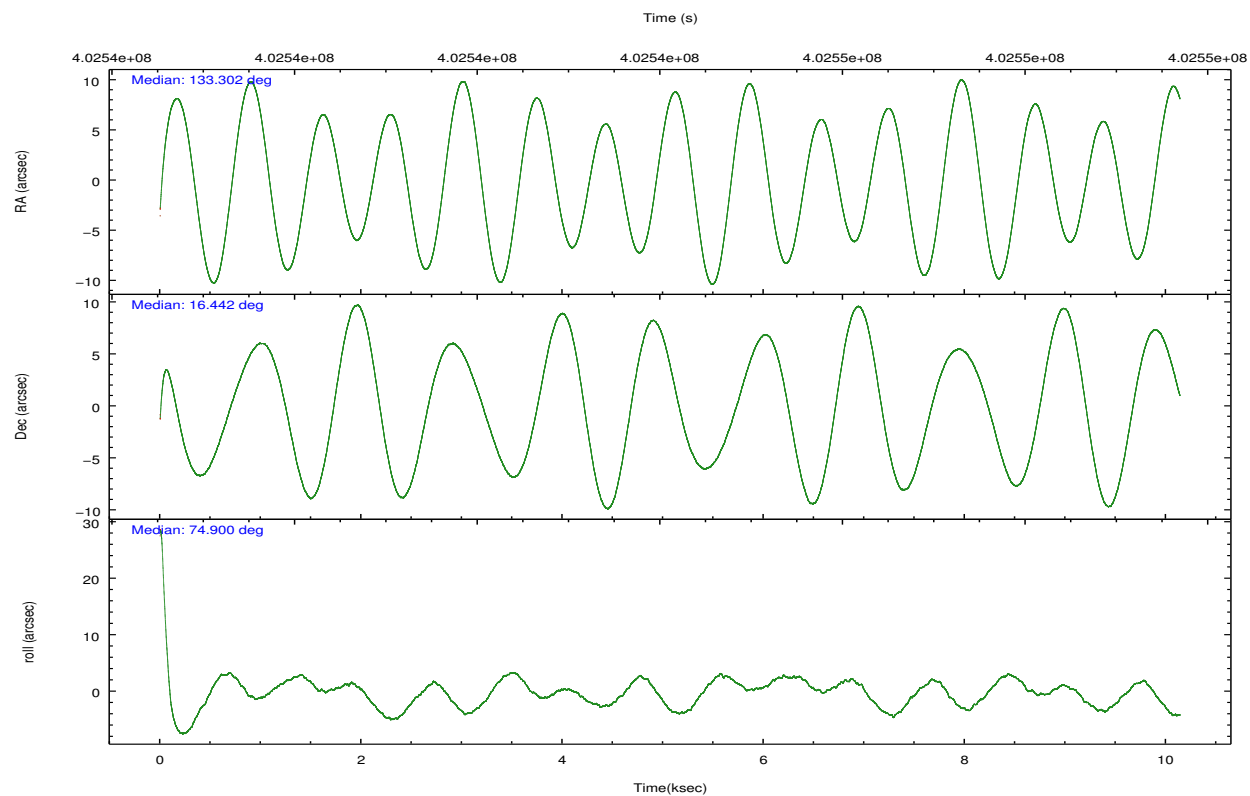
	ccd 6	ccd 7
grade 0 events	2839	3793
	3%	4%
grade 1 events	29	115
	0%	0%
grade 2 events	1835	8380
	2%	9%
grade 3 events	880	3687
	1%	4%
grade 4 events	899	3574
	1%	3%
grade 5 events	3368	9480
	4%	10%
grade 6 events	1820	21129
	2%	23%
grade 7 events	60755	39379
	83%	43%

2.2 Compared Parameters

Parameter	Planned	Actual	Parameter	Planned	Actual
Instrument	ACIS	ACIS	Obspar format version number	7	7
Detector	ACIS-67	ACIS-67	Obspar file type	PREDICTED	ACTUAL
Grating	NONE	NONE	Obspar update status	NONE	UPDATED
Data mode	VFAINT	VFAINT	CCD I0 on	N	N
Observation mode	POINTING	POINTING	CCD I1 on	N	N
[deg] Pointing RA	133.310015	133.3023459695032	CCD I2 on	N	N
[deg] Pointing Dec	16.415958	16.44228989779282	CCD I3 on	N	N
[deg] Pointing Roll	74.748757	74.90758085946983	CCD S0 on	N	N
[mm] SIM focus pos	-0.684267	-0.6828225247311905	CCD S1 on	N	N
[mm] SIM defocus	0	0.001444936568705701	CCD S2 on	O1	Y
[mm] SIM translation stage pos	-190.132523	-190.1400660498719	CCD S3 on	Y	Y
[mm] SIM translation stage offset	0	0.00754346686406393	CCD S4 on	N	N
[s] Observation start time (MET)	402539184.184000	402537956.10144	CCD S5 on	N	N
Observation start date	2010-10-04T00:25:18	2010-10-04T00:05:56	Number of optional ACIS chips dropped	0	0
[s] Observation end time (MET)	402549184.184000	402549619.57704	On-chip summing requested	N	N
Observation end date	2010-10-04T03:11:58	2010-10-04T03:20:19	Subarray requested	NONE	NONE
Read mode	TIMED	TIMED	Alternating exposures requested	N	N
			[s] Primary exposure time	0.000000	3

2.3 Aspect



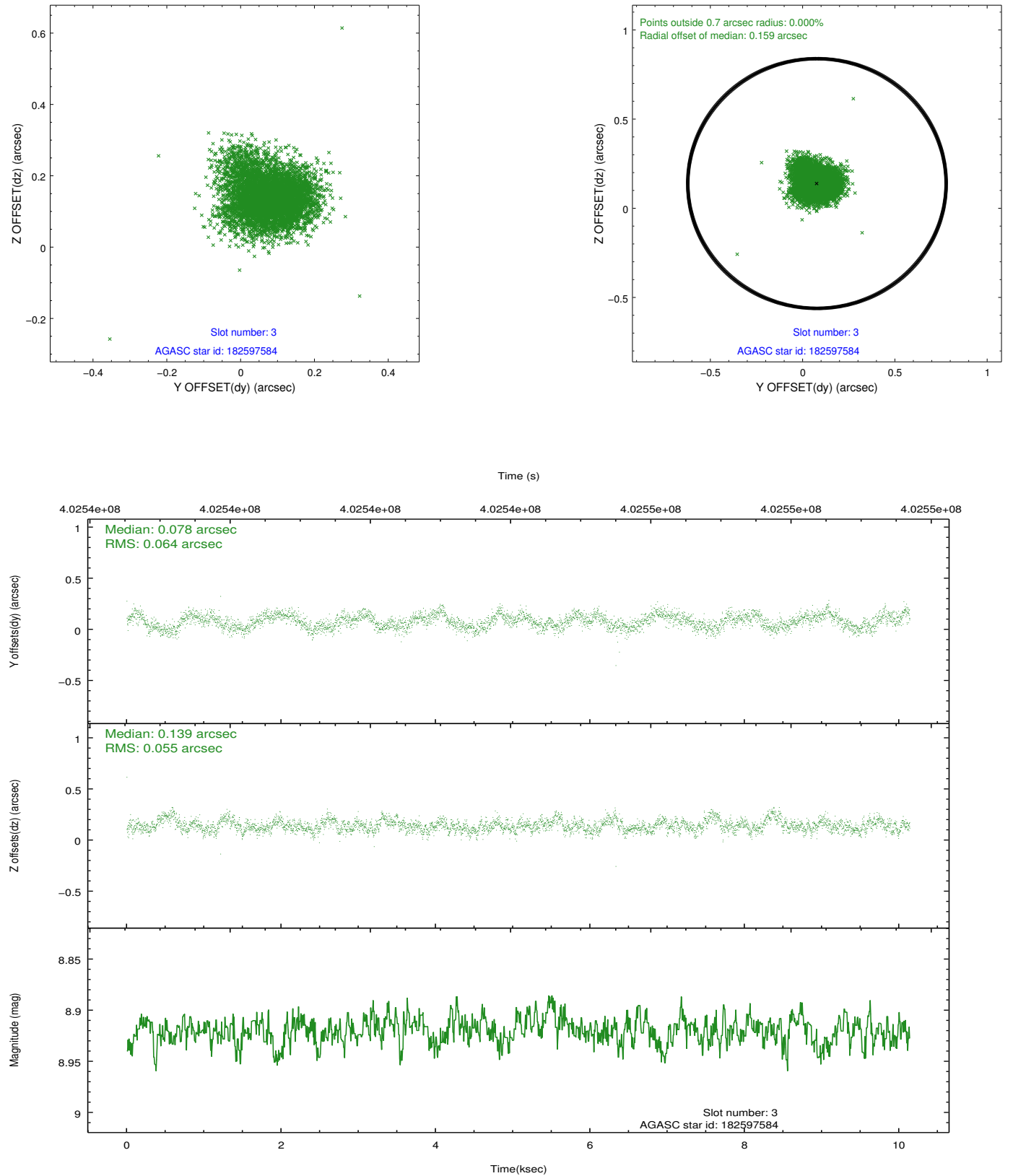


Slot Statistics

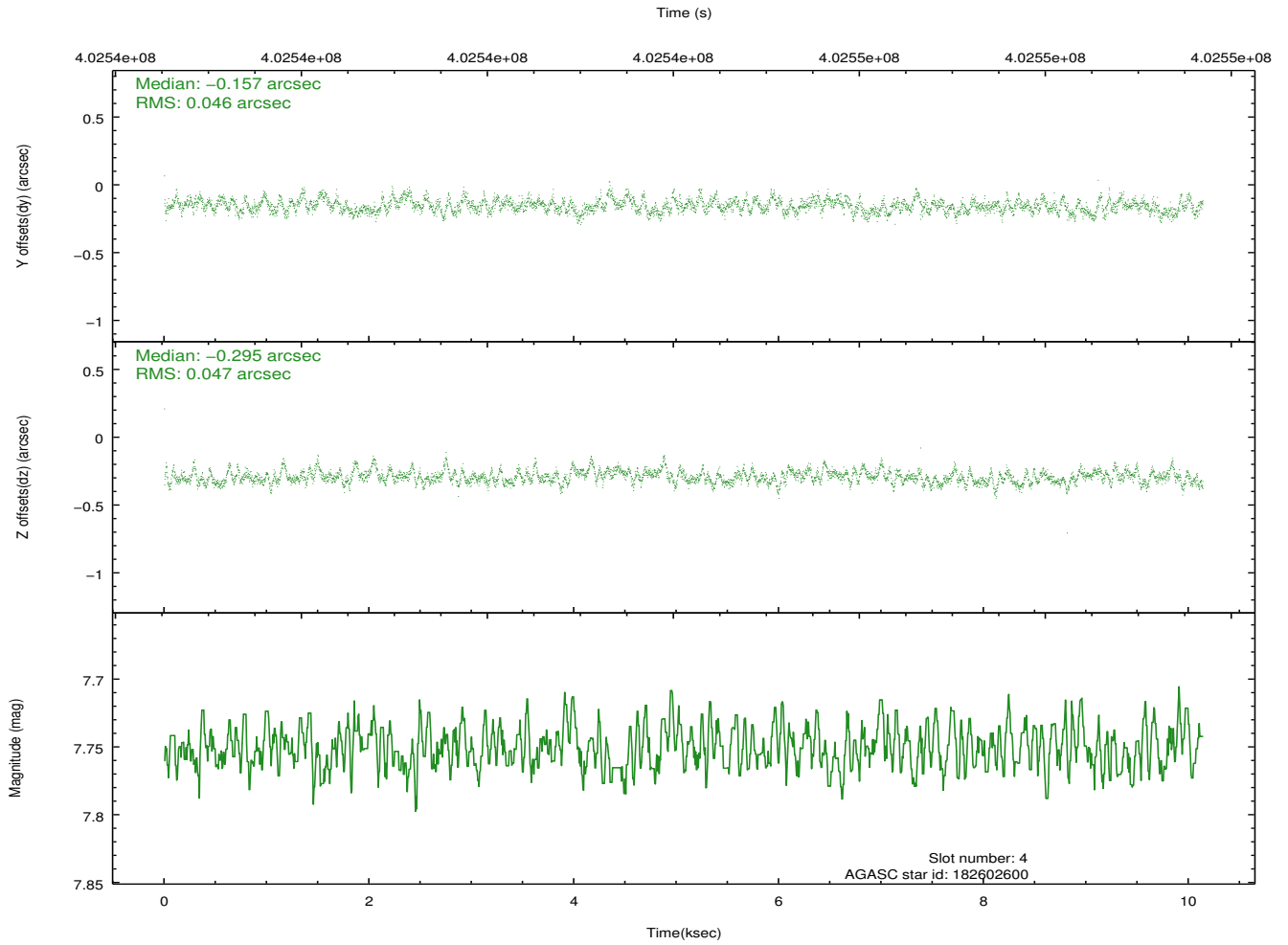
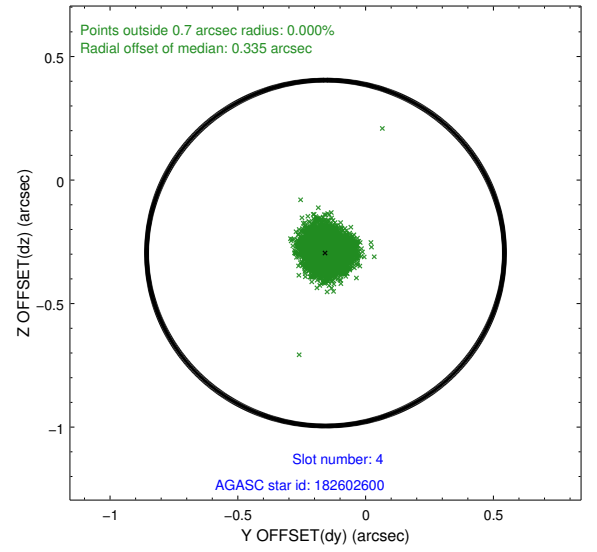
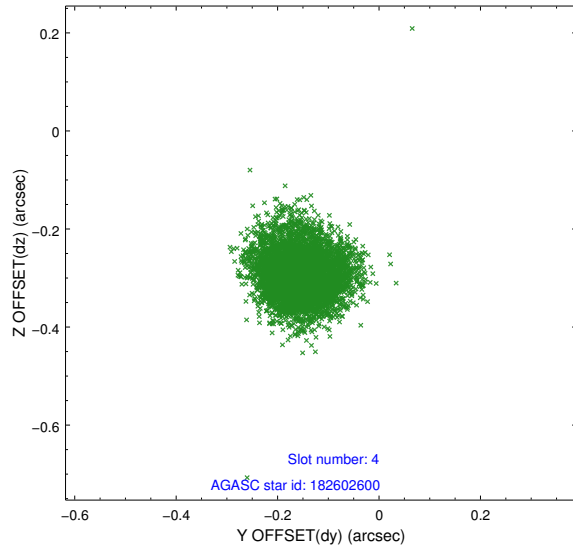
slot	status	id	mag	n_pts	med_dy	med_dz	dr1	dr2	ra	dec	mean_y	mean_z
0	FID	ACIS-S-2	6.88	2474	-0.092	-0.028	0.012	0.020	0.000000	0.000000	-771.92	-1741.11
1	FID	ACIS-S-4	6.96	2474	0.218	0.051	0.007	0.014	0.000000	0.000000	2141.43	166.90
2	FID	ACIS-S-5	6.99	2474	-0.158	-0.016	0.012	0.021	0.000000	0.000000	-1824.15	161.10
3	GUIDE	182597584	8.92	4945	0.078	0.139	0.089	0.144	133.231559	15.817132	-2151.03	-304.51
4	GUIDE	182602600	7.75	4943	-0.157	-0.295	0.069	0.113	133.244753	16.356877	-265.28	161.71
5	GUIDE	182717472	8.95	4943	0.069	0.237	0.090	0.139	133.637610	15.681948	-2249.60	-1789.62
6	GUIDE	182719208	8.50	4944	0.046	0.120	0.086	0.135	133.811207	16.211642	-252.00	-1864.04
7	GUIDE	182597712	8.77	4941	-0.035	-0.206	0.070	0.119	132.739270	15.901123	-2305.89	1419.33

2.4 Star Slots

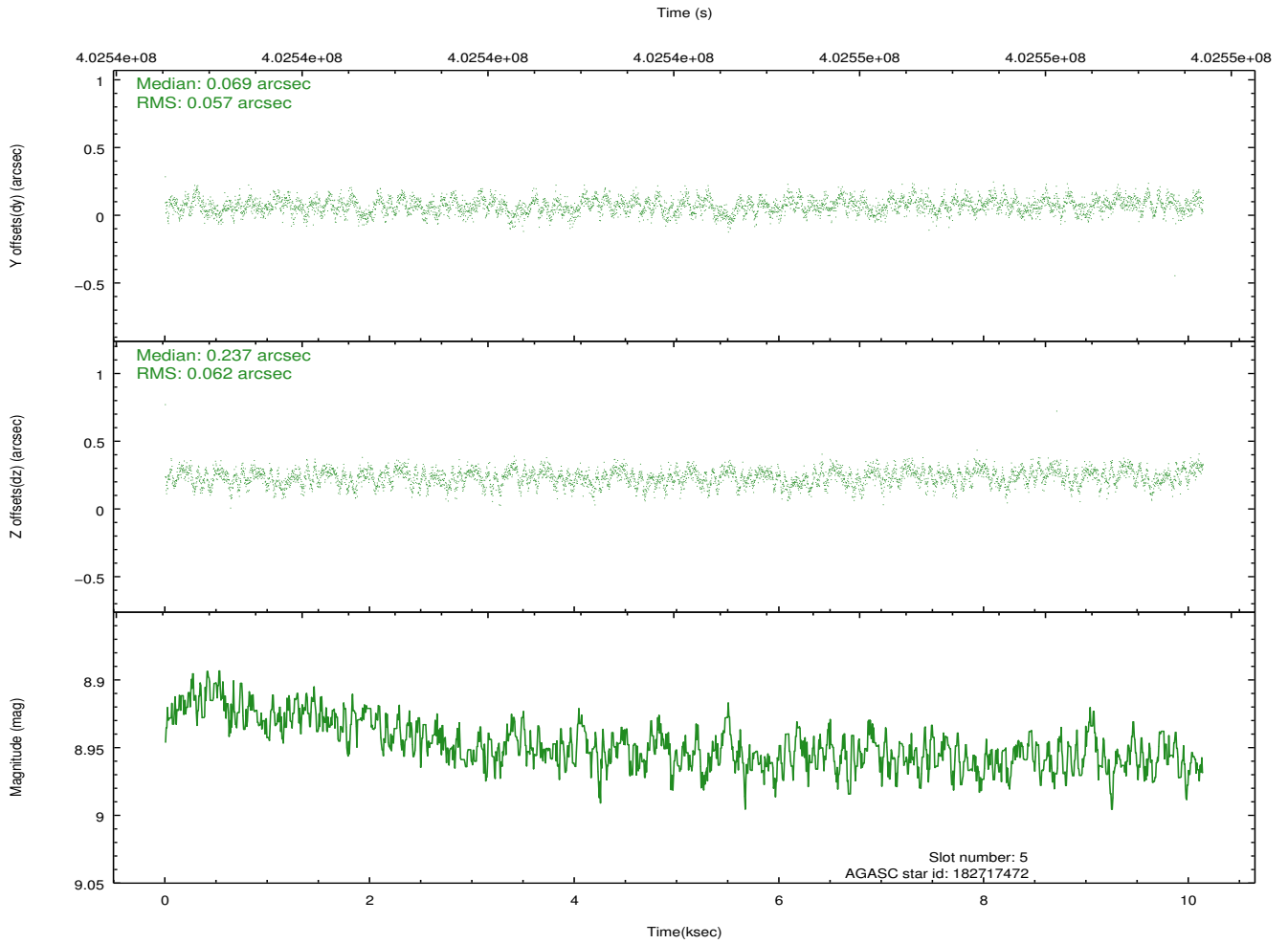
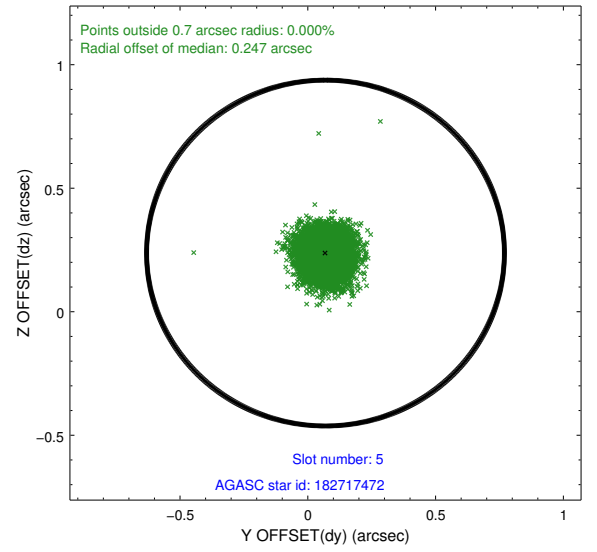
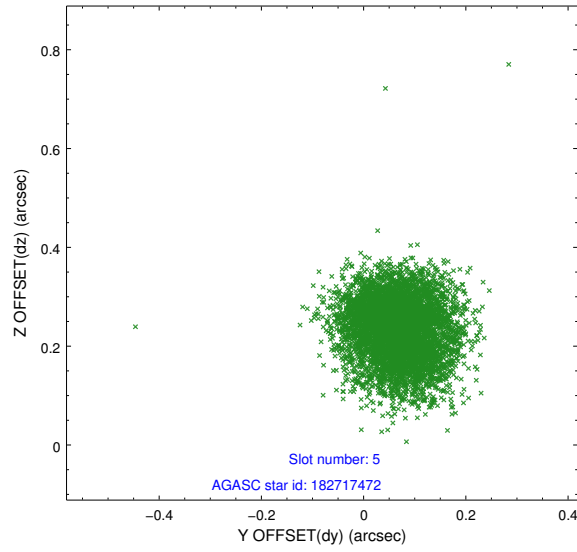
2.4.1 Slot 3



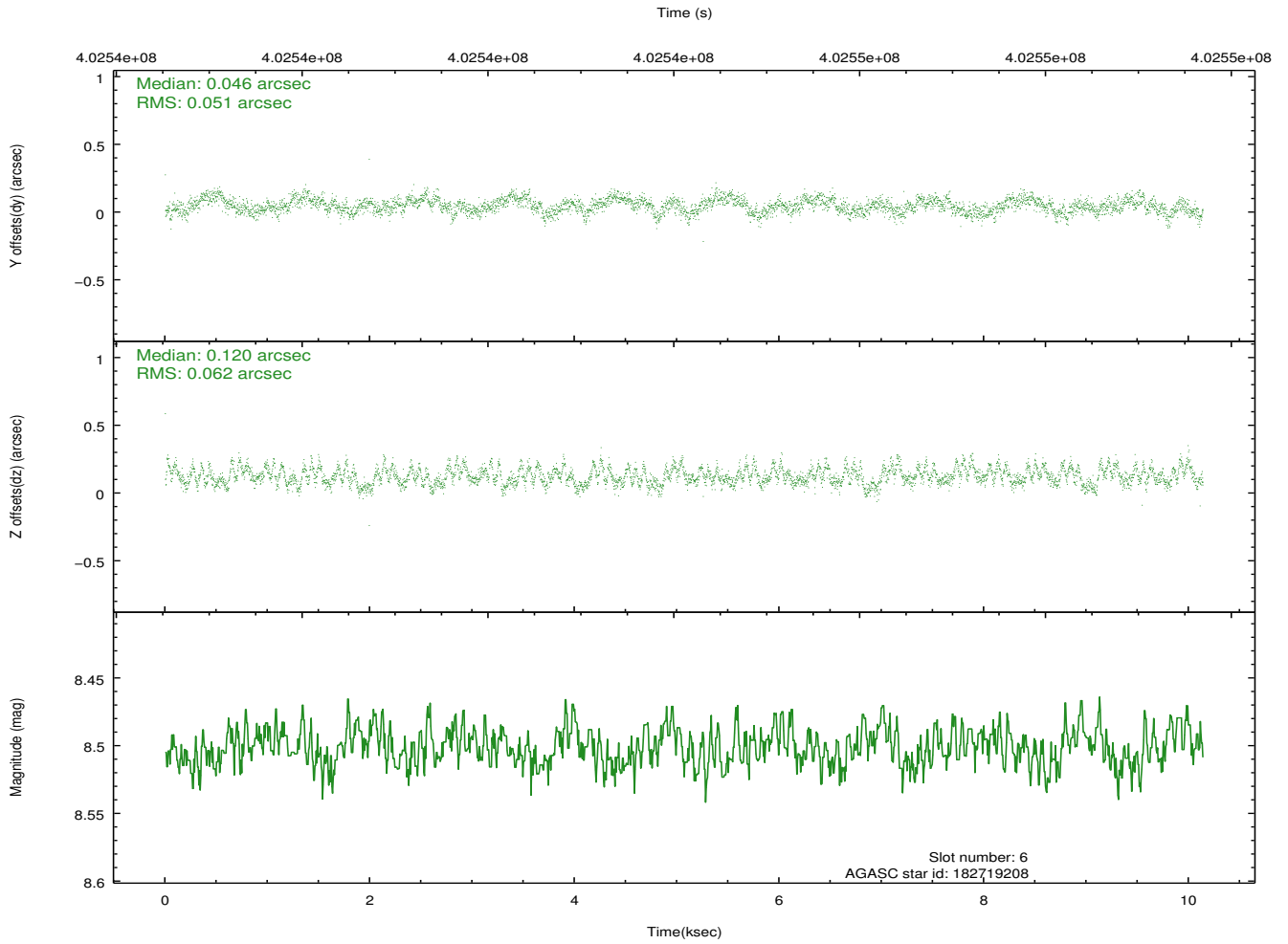
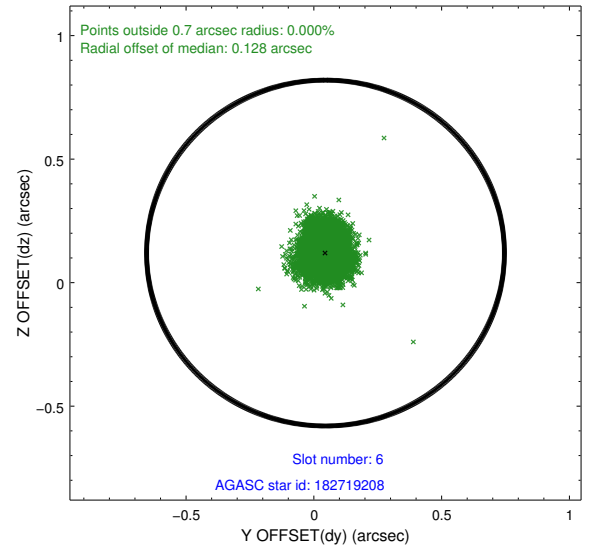
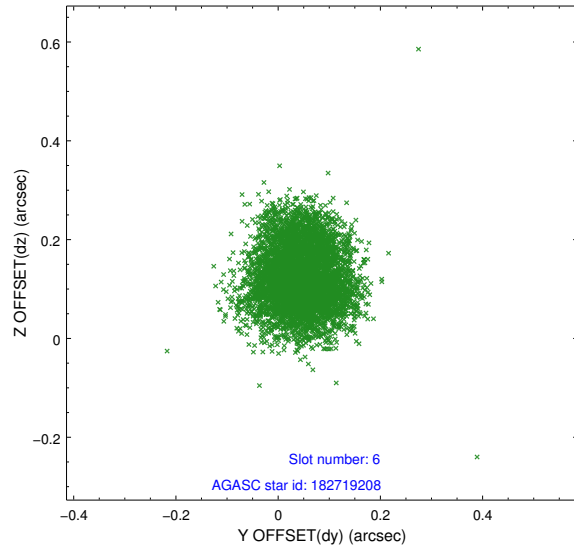
2.4.2 Slot 4



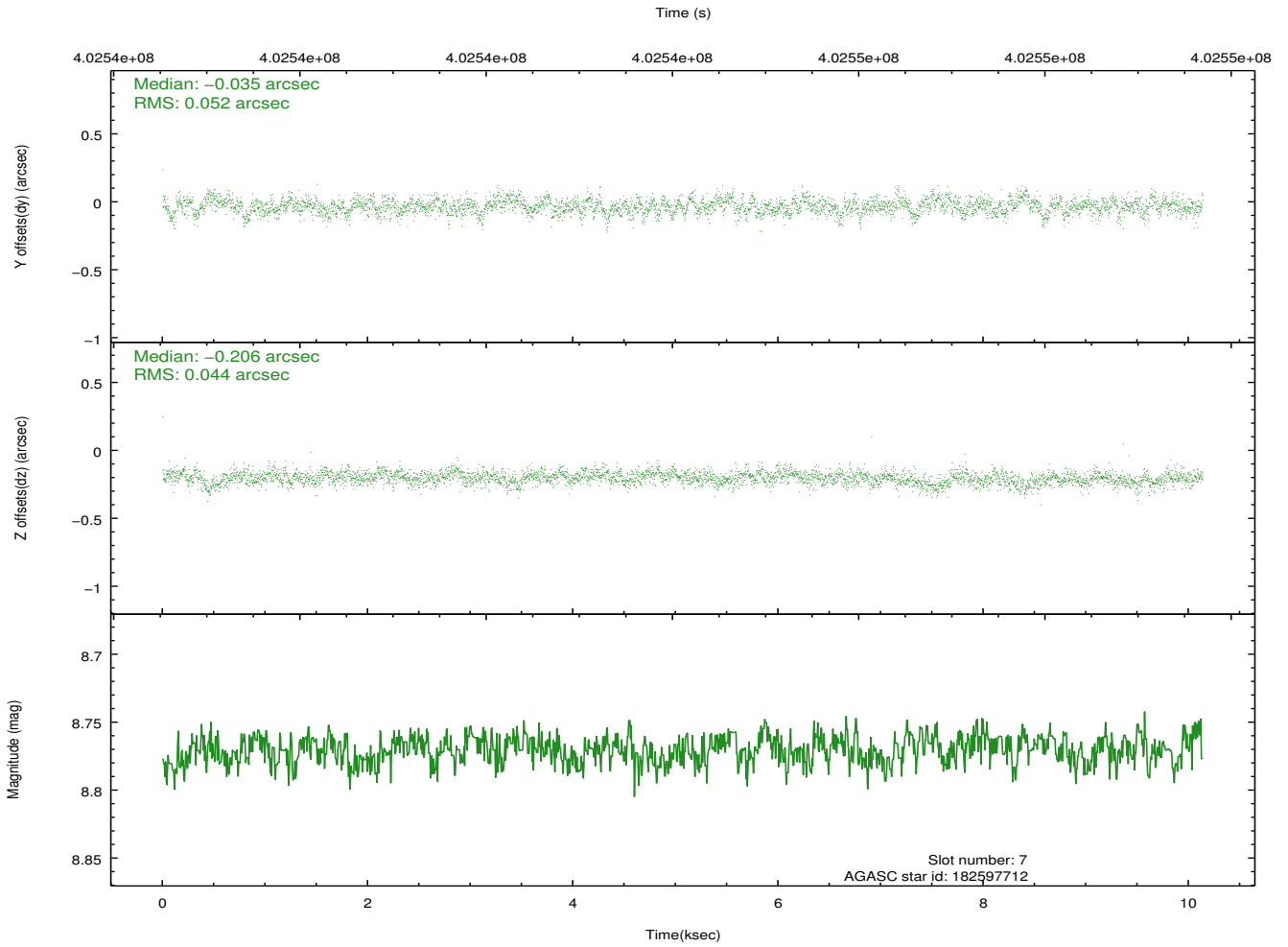
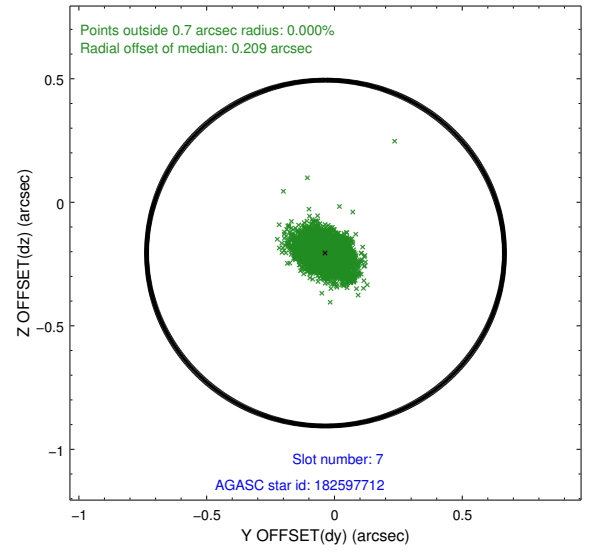
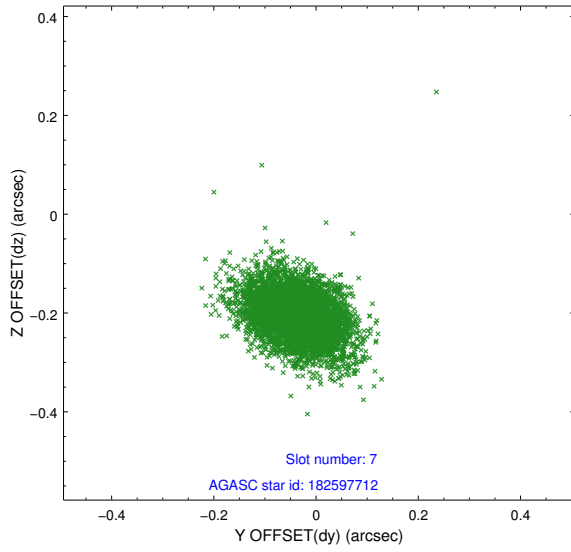
2.4.3 Slot 5



2.4.4 Slot 6

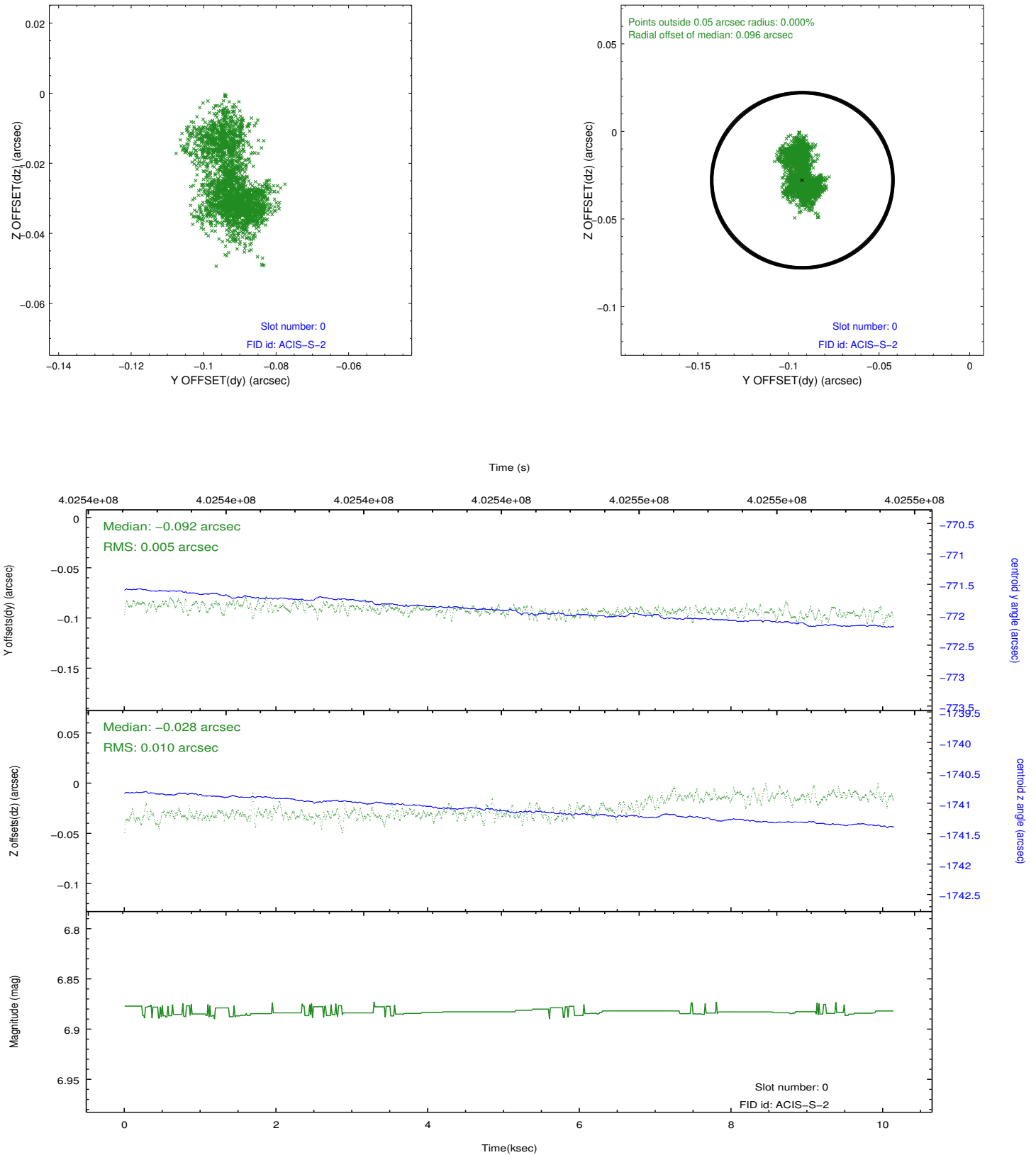


2.4.5 Slot 7

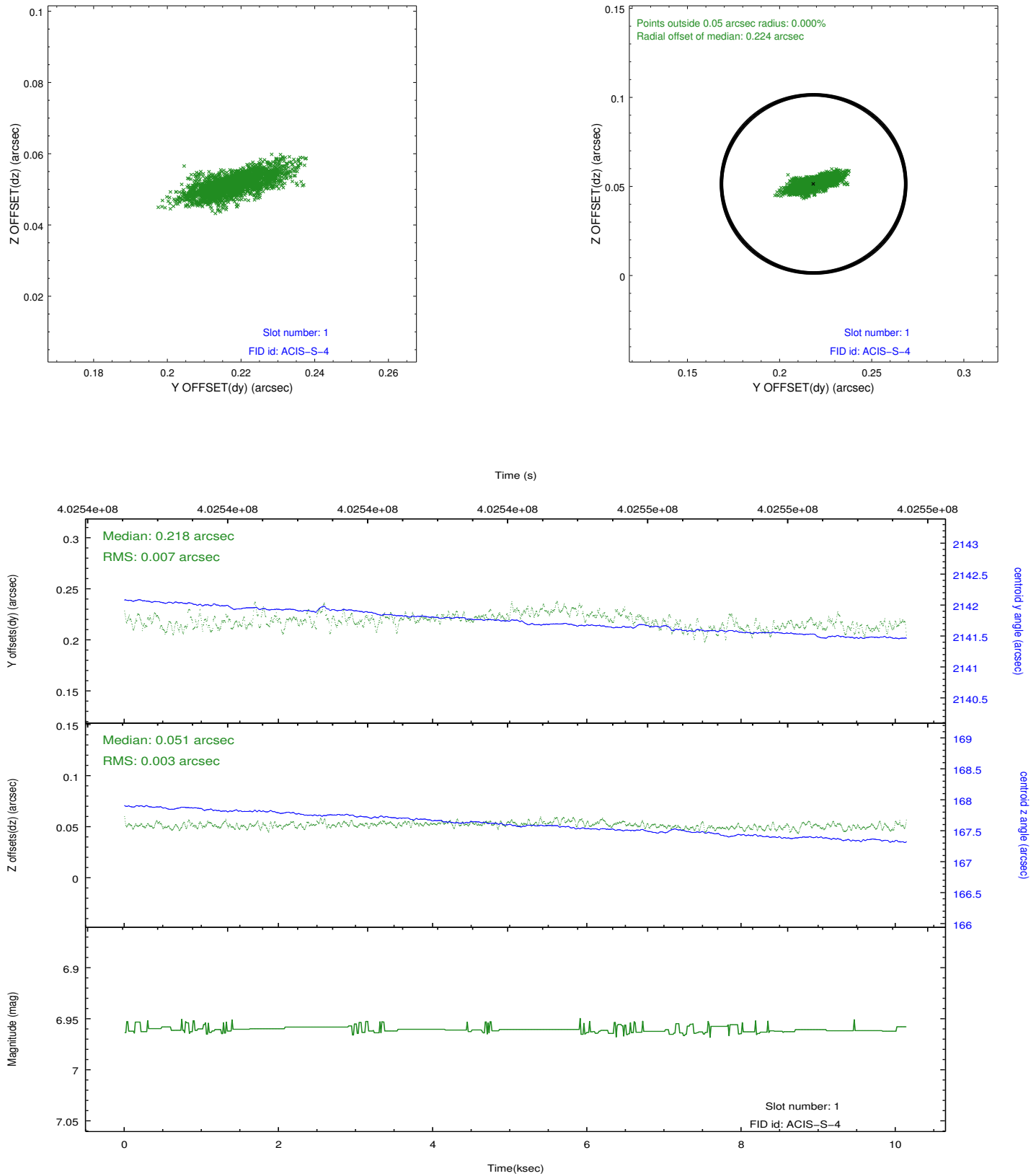


2.5 FID Slots

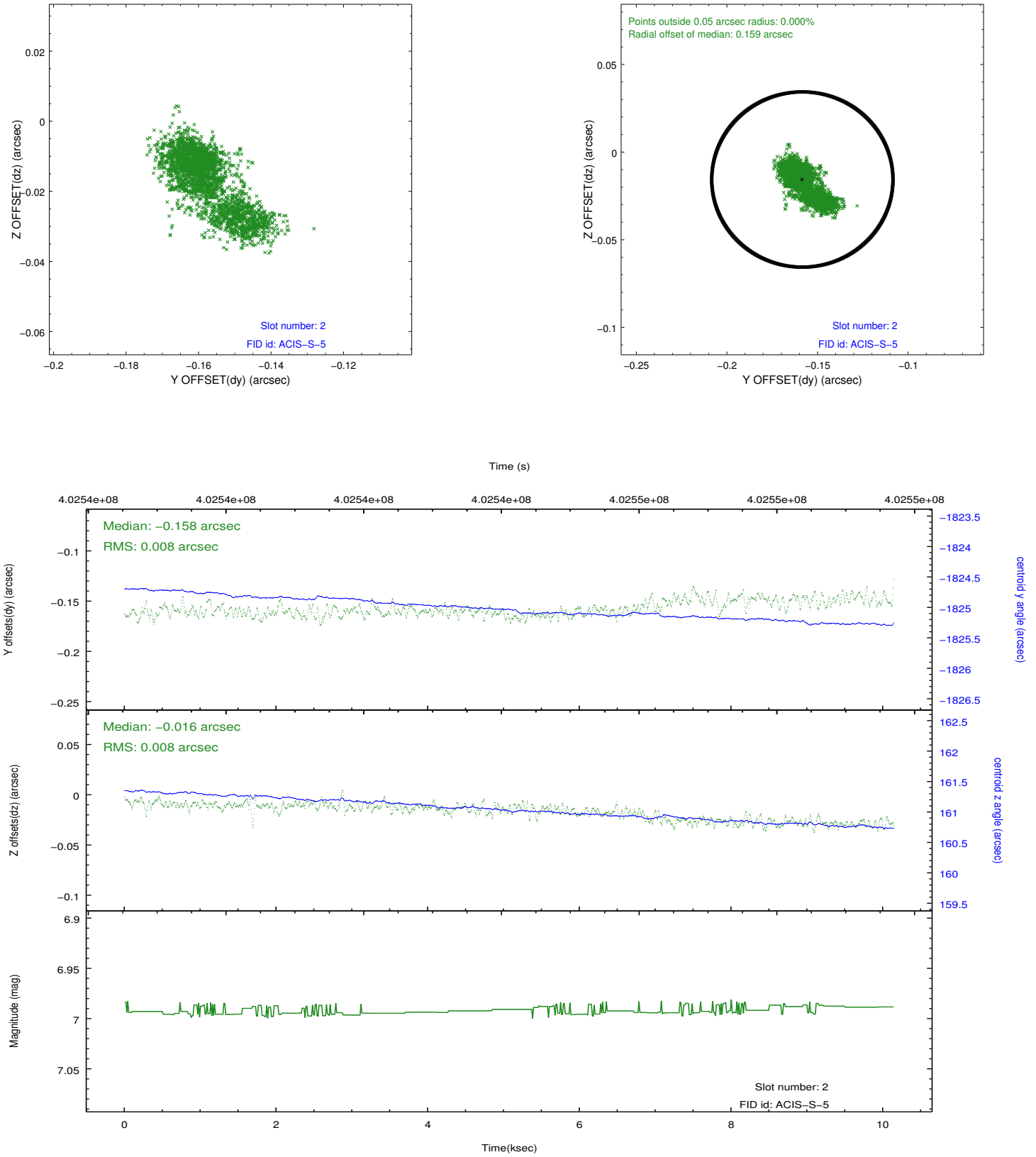
2.5.1 Slot 0



2.5.2 Slot 1



2.5.3 Slot 2



A Summary

A.1 Status

V&V Scientist	Jen Lauer
V&V Date (YYYY-MM-DD)	2012.07.12
V&V Edition	1
V&V Disposition and Status	OK
V&V Charge Time	10.068

A.2 Comments