

V&V Reference Report

L2 ASCDS Version : 8.4.5

Observation 11853 - L2 Version 2
Chandra X-Ray Center

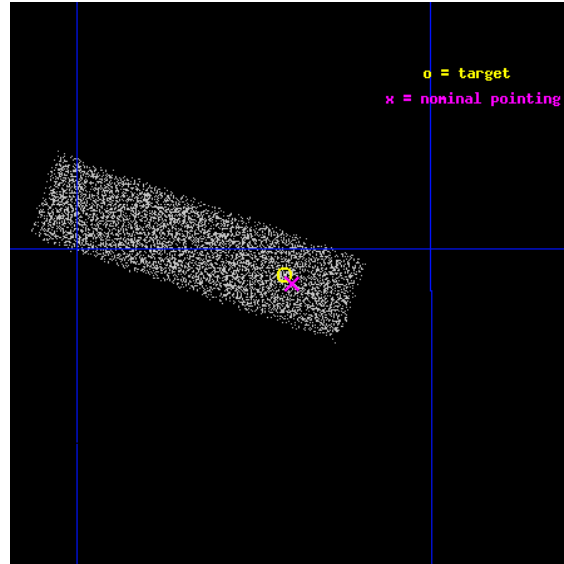
L2 Processing Date : Jun 29 2012

Contents

1	Front	2
2	OBI	3
2.1	OBI	3
2.1.1	Images	3
2.1.2	Bias	3
2.1.3	Parameters	4
2.1.4	Events	4
2.2	Compared Parameters	5
2.3	Aspect	6
2.4	Star Slots	9
2.4.1	Slot 3	9
2.4.2	Slot 4	10
2.4.3	Slot 5	11
2.4.4	Slot 6	12
2.4.5	Slot 7	13
2.5	FID Slots	14
2.5.1	Slot 0	14
2.5.2	Slot 1	15
2.5.3	Slot 2	16
A	Summary	17
A.1	Status	17
A.2	Comments	17

1 Front

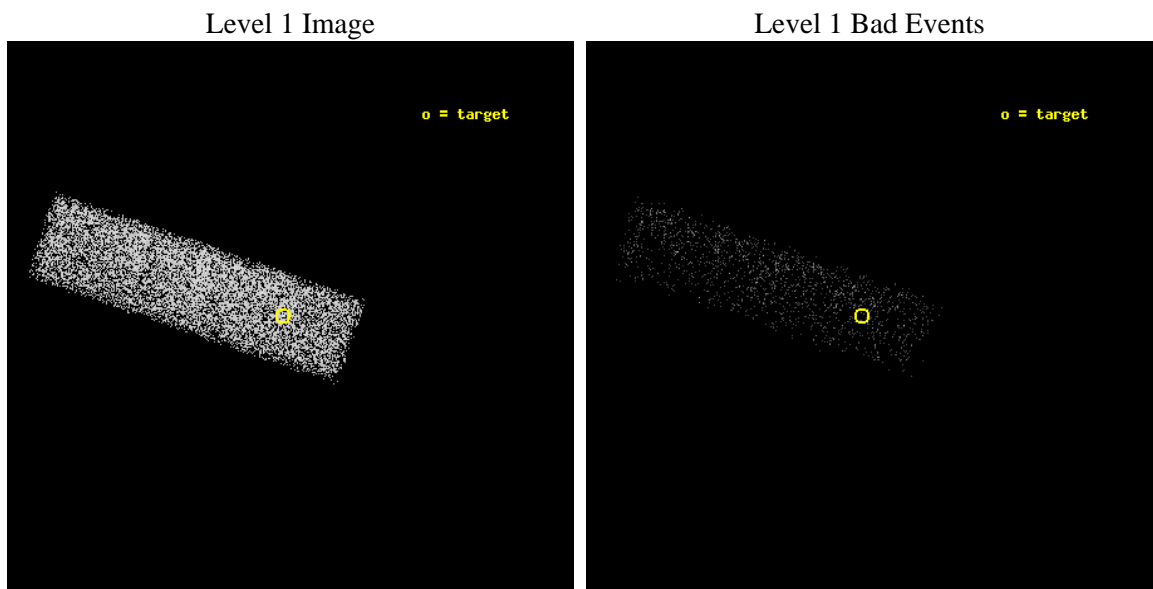
seq_num	702300	Sequence number
obs_id	11853	Observation id
title	A Survey of X-ray Variability in Bright Broad Absorption Line Quasars Over Multi-Year Timescales	Proposal title
observer	Professor Gordon Garmire	Principal investigator
object	PG 1700+518	Source name
dtcycle	0	
cycle	P	events from which exps? Prim/Second/Both
ra_targ	255.353333	Observer's specified target RA [deg]
dec_targ	51.822222	Observer's specified target Dec [deg]
ra_nom	255.3483382843	Nominal RA [deg]
dec_nom	51.818451800802	Nominal Dec [deg]
roll_nom	198.97339988438	Nominal Roll [deg]
revision	2	Processing version of data
ontime	7027.200104773	Sum of GTIs [s]
livetime	6684.2957336375	Livetime [s]
ontime7	7027.200104773	Sum of GTIs [s]
l2events	7856	Number of level 2 events



2 OBI

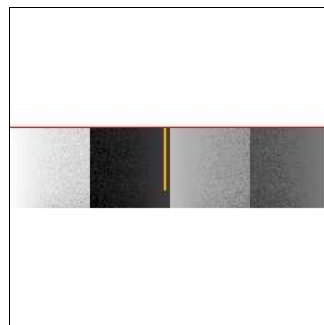
2.1 OBI

2.1.1 Images



2.1.2 Bias

Chip 7



2.1.3 Parameters

obi_num	0	Obi number	sched_exp_time	7000.000000	[s] Scheduled observation exposure time
ascdsver	8.4.5	Processing system revision	ontime	7027.200104773	Sum of GTIs [s]
caldsver	4.5.0	 	ontime7	7027.200104773	Sum of GTIs [s]
date	2012-06-29T09:33:44	Date and time of file creation	l1events	16609	Number of level 1 events
revision	2	Processing version of data			

2.1.4 Events

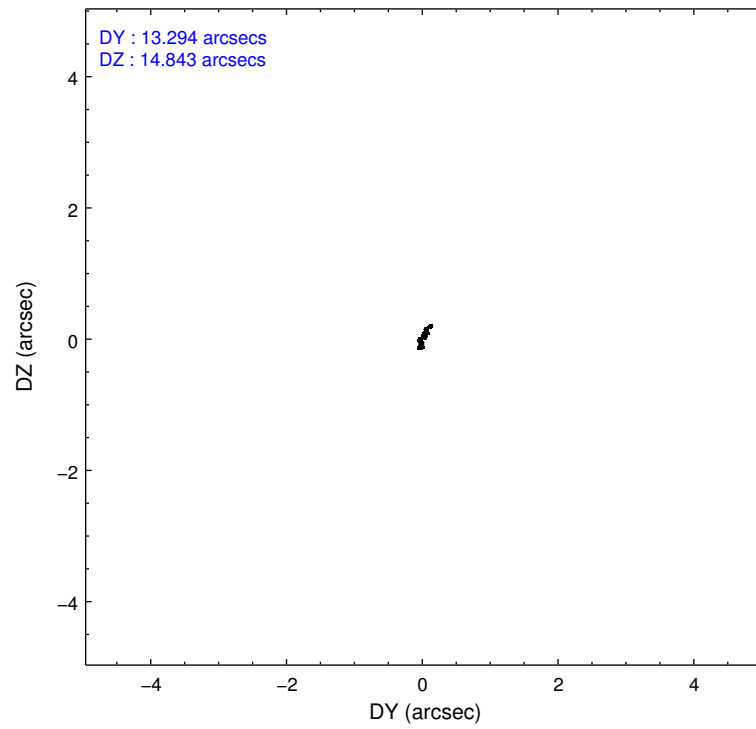
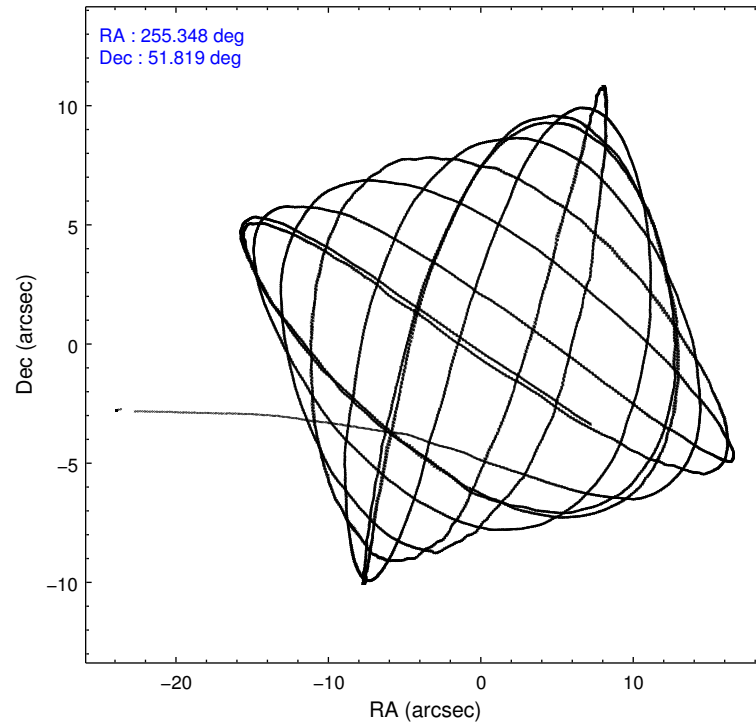
	ccd 7
level 1 events	16609
rejected events	8442
rejected %	50%

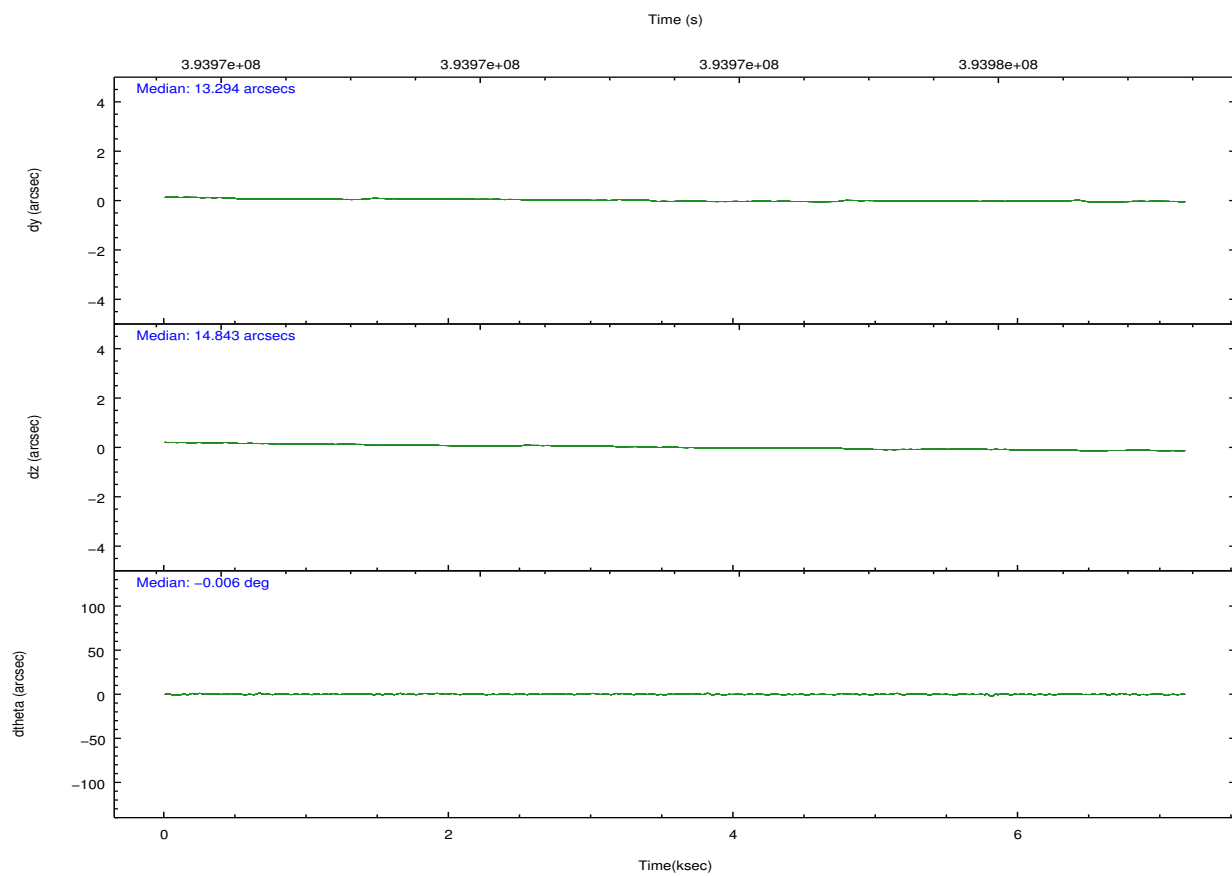
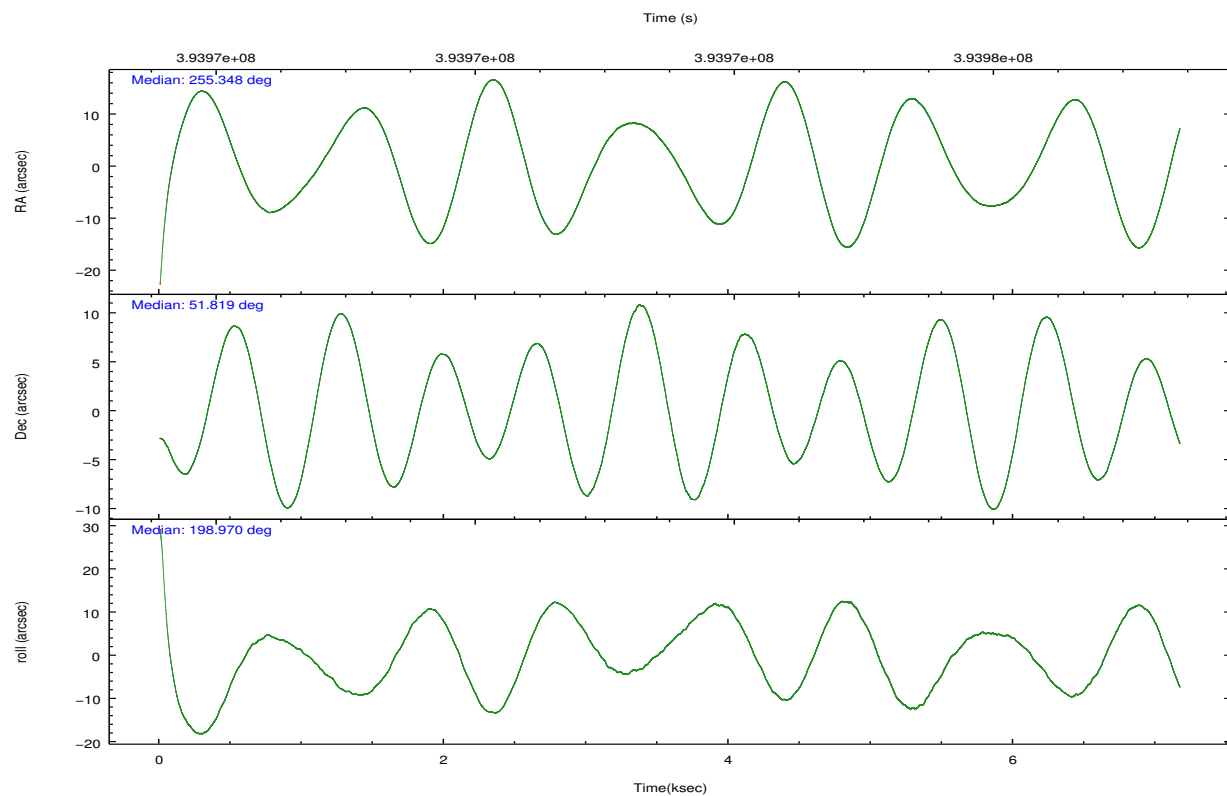
	ccd 7
grade 0 events	807
	4%
grade 1 events	21
	0%
grade 2 events	1622
	9%
grade 3 events	934
	5%
grade 4 events	891
	5%
grade 5 events	1728
	10%
grade 6 events	3914
	23%
grade 7 events	6692
	40%

2.2 Compared Parameters

Parameter	Planned	Actual	Parameter	Planned	Actual
Instrument	ACIS	ACIS	Obspar format version number	7	7
Detector	ACIS-7	ACIS-7	Obspar file type	PREDICTED	ACTUAL
Grating	NONE	NONE	Obspar update status	NONE	UPDATED
Data mode	FAINT	FAINT	Number of optional ACIS chips dropped	0	0
Observation mode	POINTING	POINTING	On-chip summing requested	N	N
[deg] Pointing RA	255.376965	255.3483382842956	Subarray requested	CUSTOM	1/4
[deg] Pointing Dec	51.839339	51.81845180080176	Subarray start row	385	385
[deg] Pointing Roll	198.794231	198.9733998843838	Subarray row count	256	256
[mm] SIM focus pos	-0.684267	-0.6828225247311905	Alternating exposures requested	N	N
[mm] SIM defocus	0	0.001444936568705701	[s] Primary exposure time	0.000000	0.8
[mm] SIM translation stage pos	-190.132523	-190.1425803651734			
[mm] SIM translation stage offset	0	0.01005778216563158			
[s] Observation start time (MET)	393970096.184000	393969089.42518			
Observation start date	2010-06-26T20:07:10	2010-06-26T19:51:29			
[s] Observation end time (MET)	393977096.184000	393978368.75066			
Observation end date	2010-06-26T22:03:50	2010-06-26T22:26:08			
Read mode	TIMED	TIMED			

2.3 Aspect



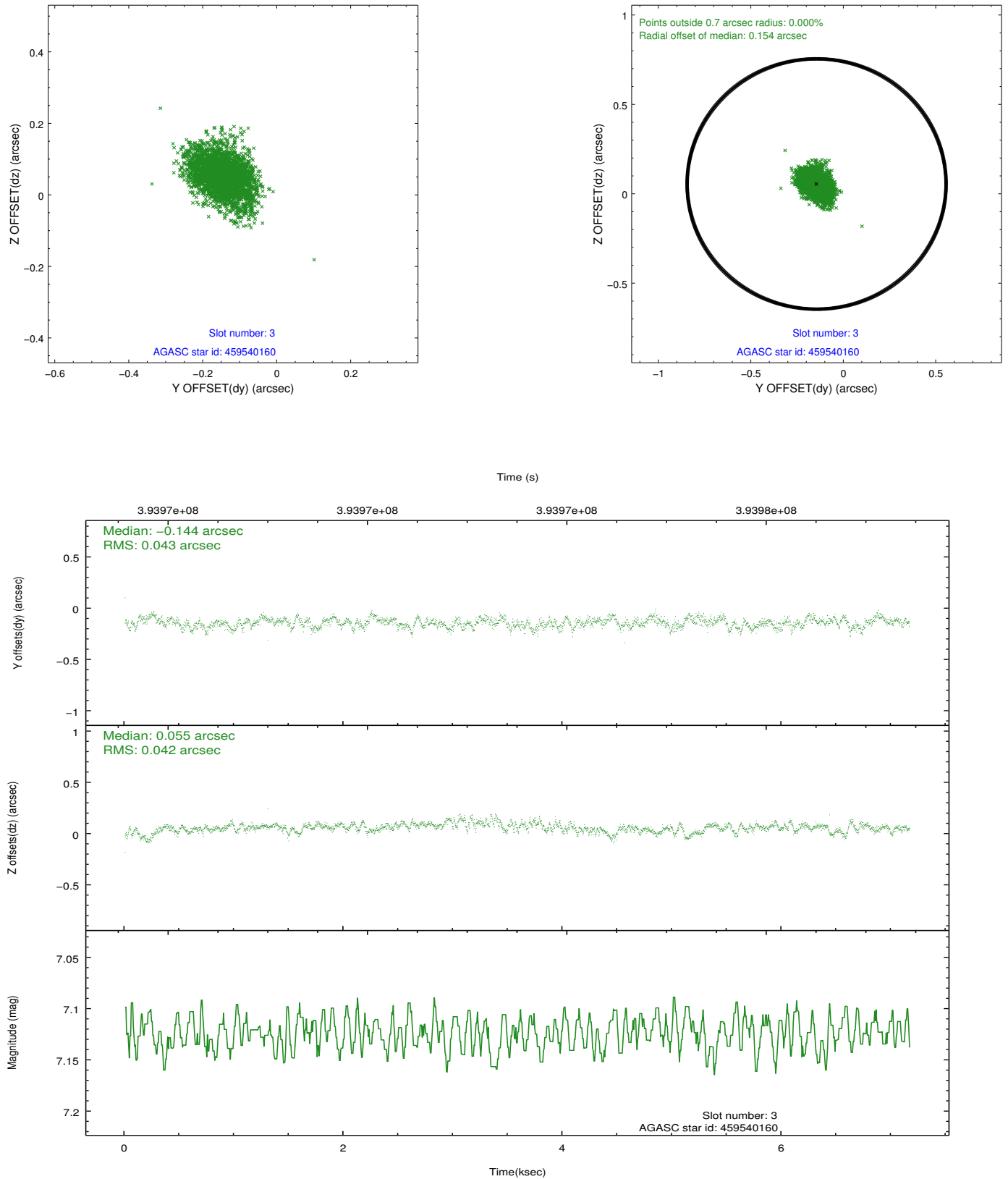


Slot Statistics

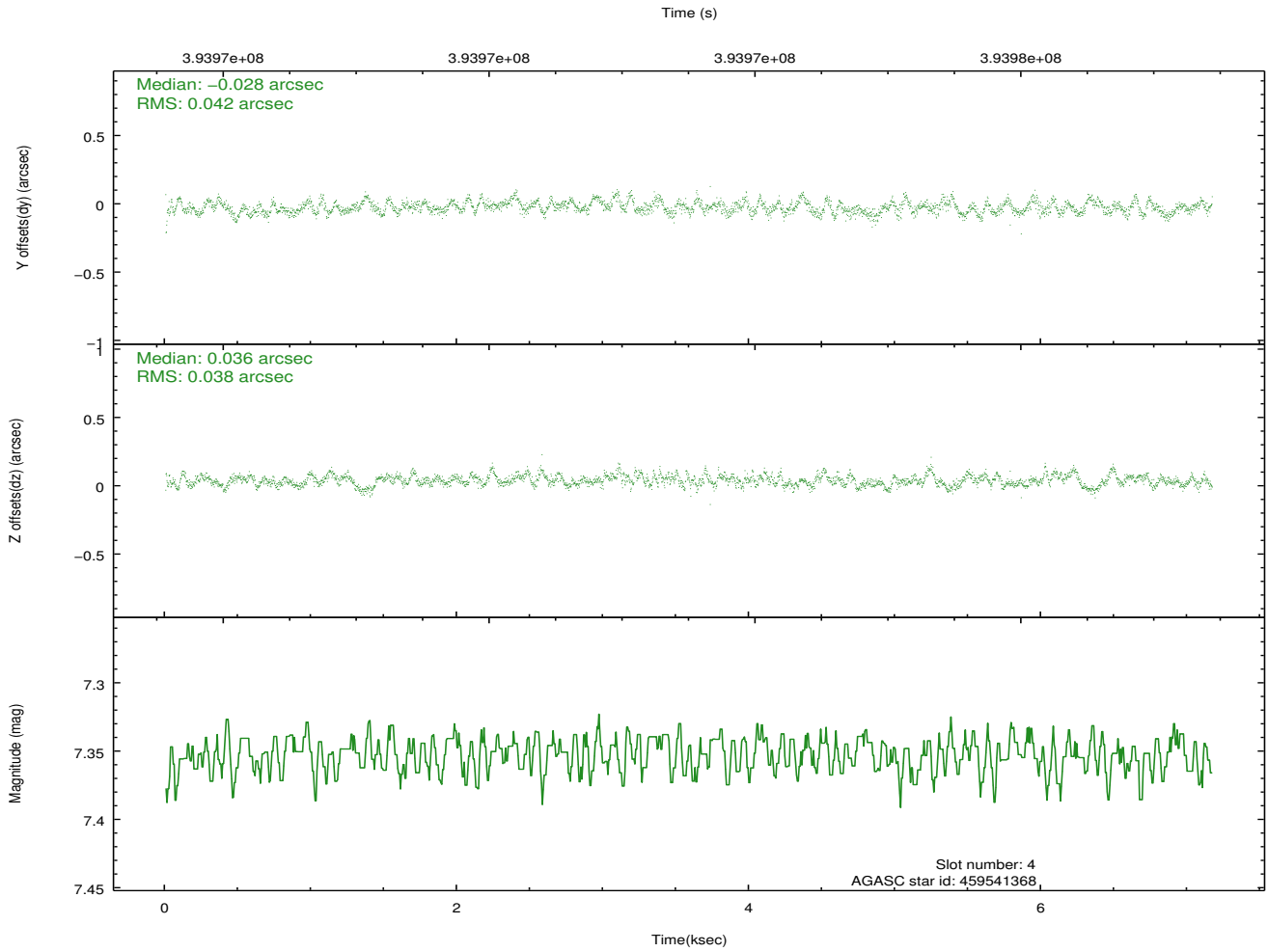
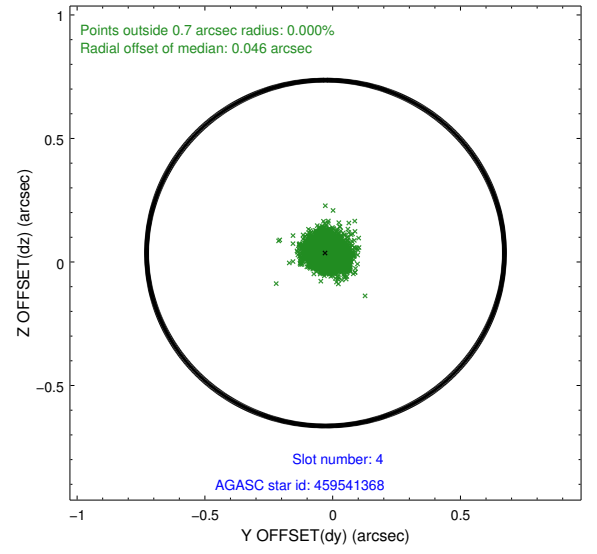
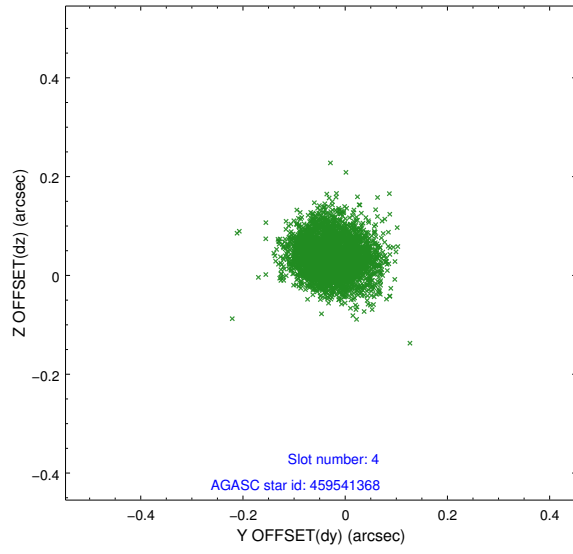
slot	status	id	mag	n_pts	med_dy	med_dz	dr1	dr2	ra	dec	mean_y	mean_z
0	FID	ACIS-S-1	6.99	1749	0.074	-0.043	0.007	0.011	0.000000	0.000000	929.91	-1731.84
1	FID	ACIS-S-5	7.02	1749	-0.166	0.040	0.006	0.010	0.000000	0.000000	-1818.91	164.93
2	FID	ACIS-S-6	7.12	1749	0.070	0.016	0.008	0.013	0.000000	0.000000	394.55	809.81
3	GUIDE	459540160	7.12	3497	-0.144	0.055	0.062	0.110	254.292396	51.899035	2205.91	-996.37
4	GUIDE	459541368	7.35	3497	-0.028	0.036	0.061	0.096	254.740520	52.309862	779.45	-2060.64
5	GUIDE	459670288	8.67	3495	-0.022	0.041	0.069	0.112	256.126653	52.161685	-1943.24	-574.29
6	GUIDE	459672144	8.97	3494	0.090	-0.179	0.074	0.117	255.593658	51.982291	-621.14	-332.98
7	GUIDE	459681600	8.20	3495	0.104	0.047	0.069	0.110	255.534425	51.942325	-449.90	-238.07

2.4 Star Slots

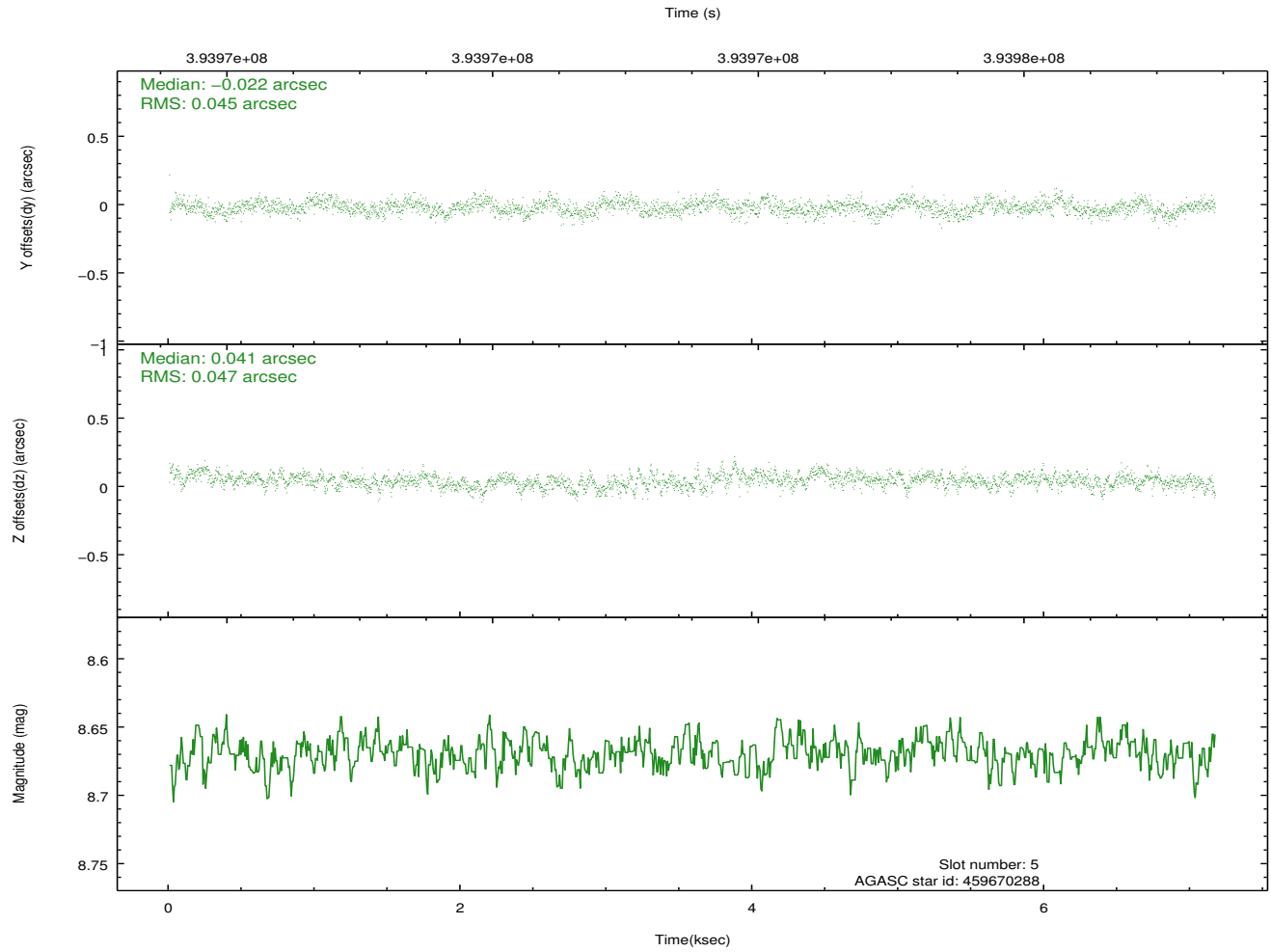
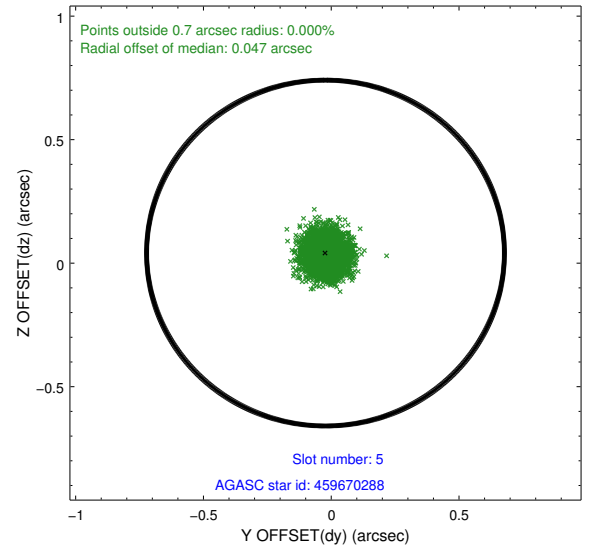
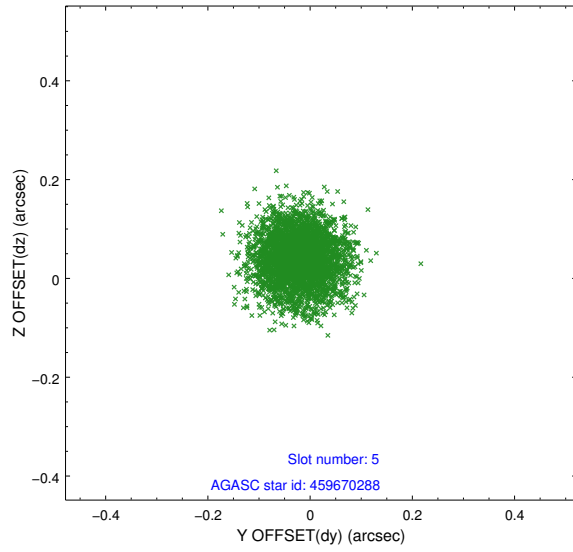
2.4.1 Slot 3



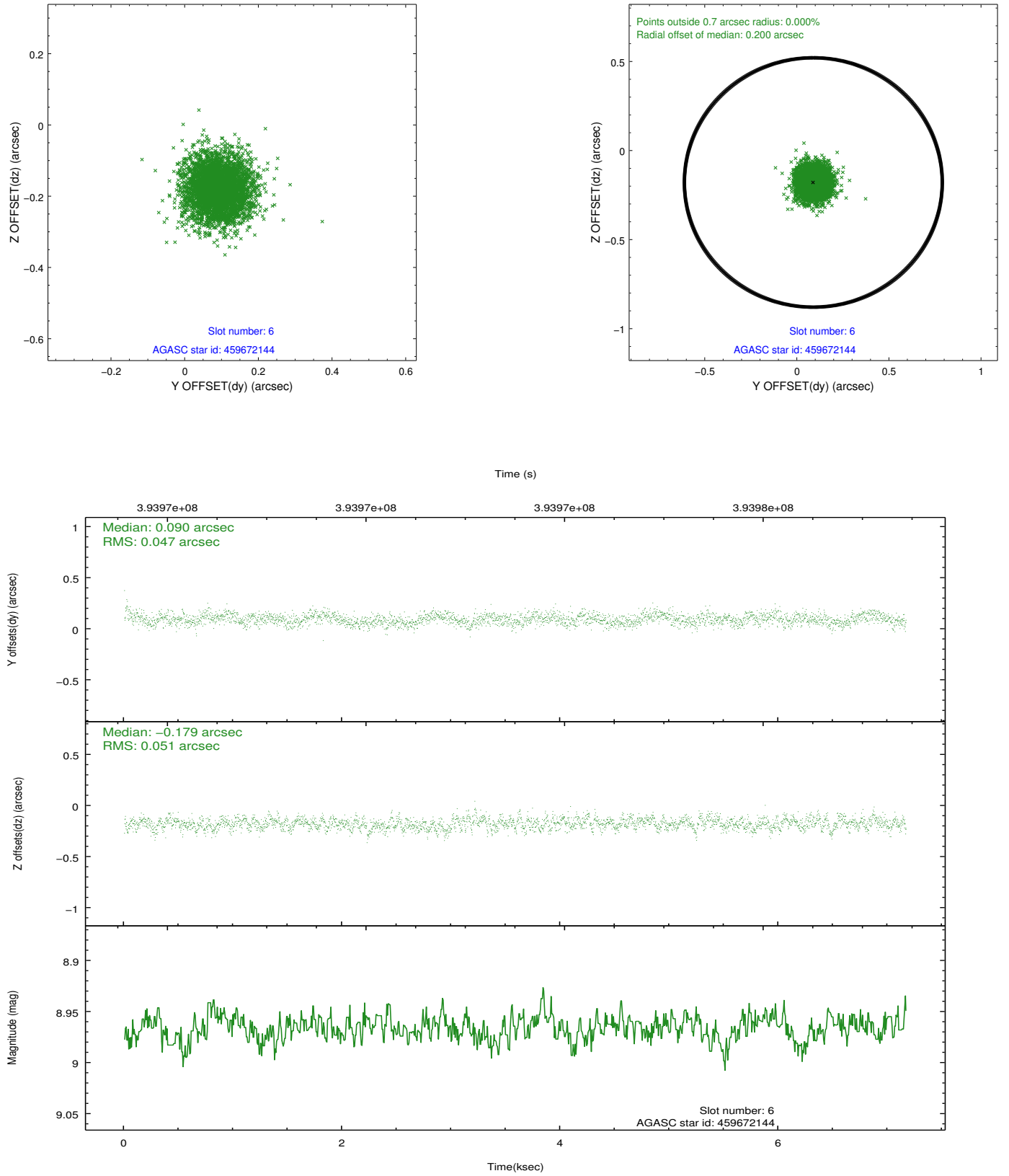
2.4.2 Slot 4



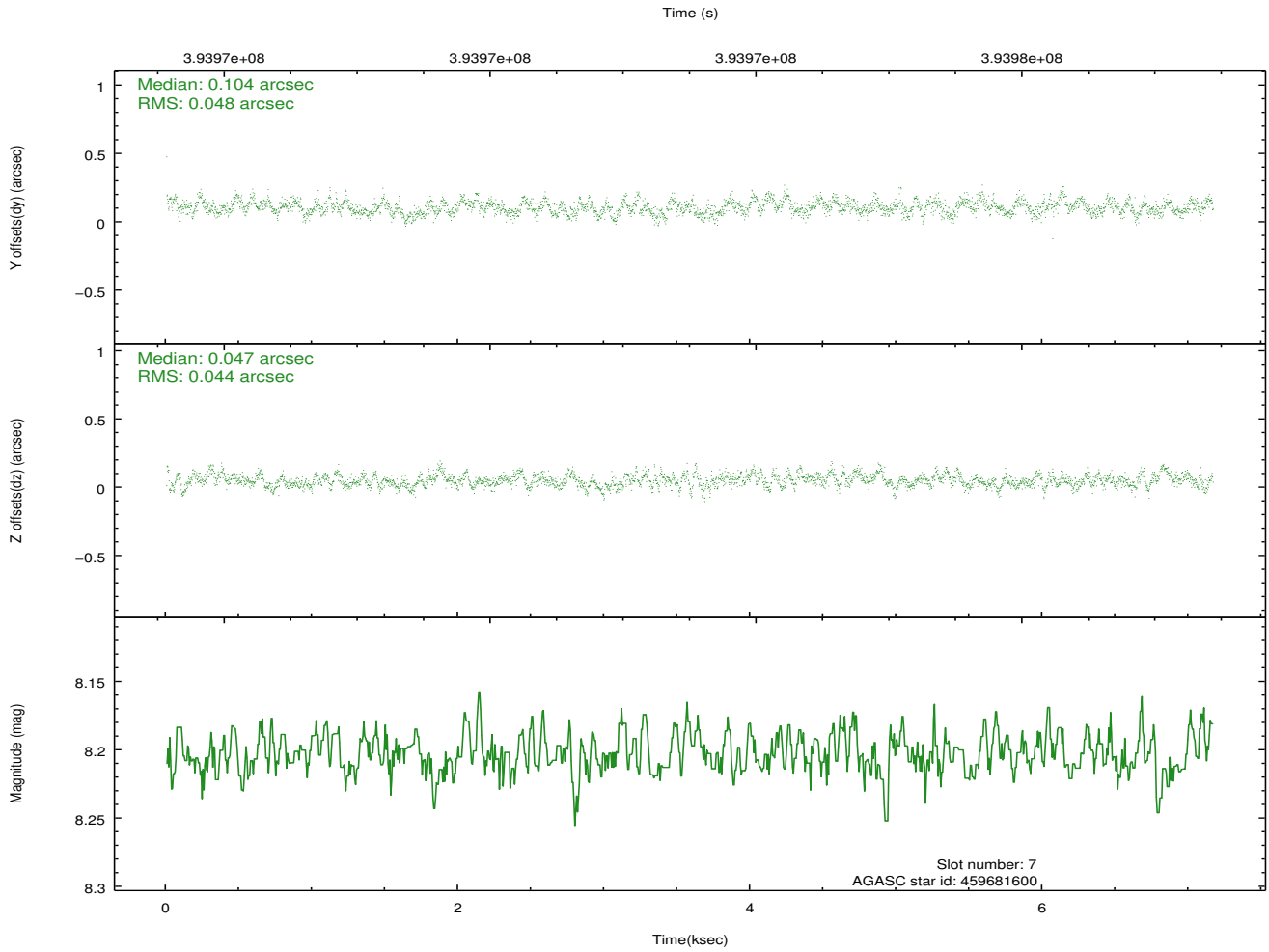
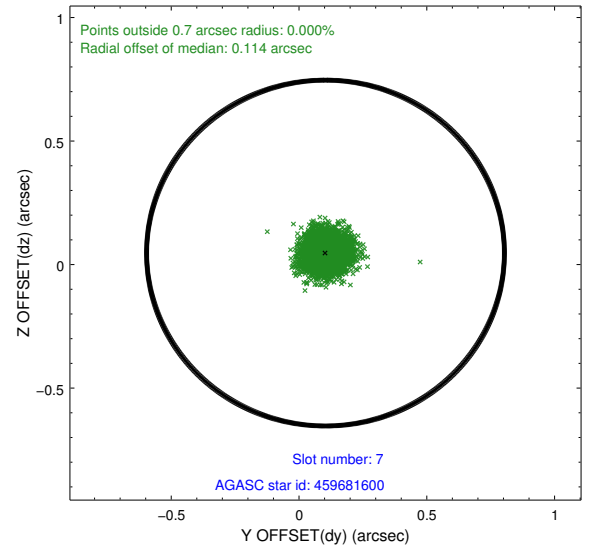
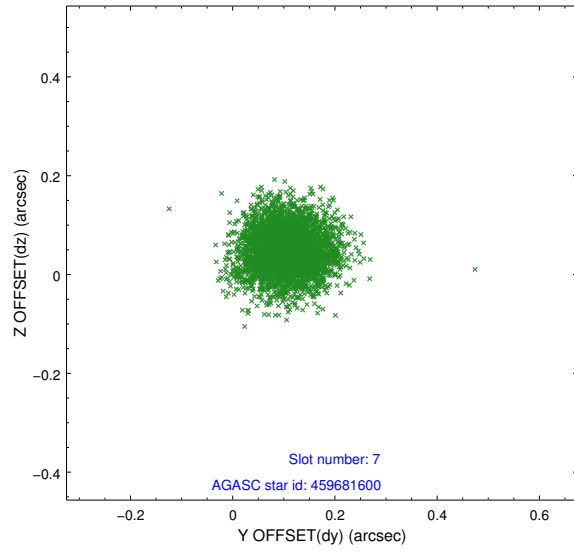
2.4.3 Slot 5



2.4.4 Slot 6

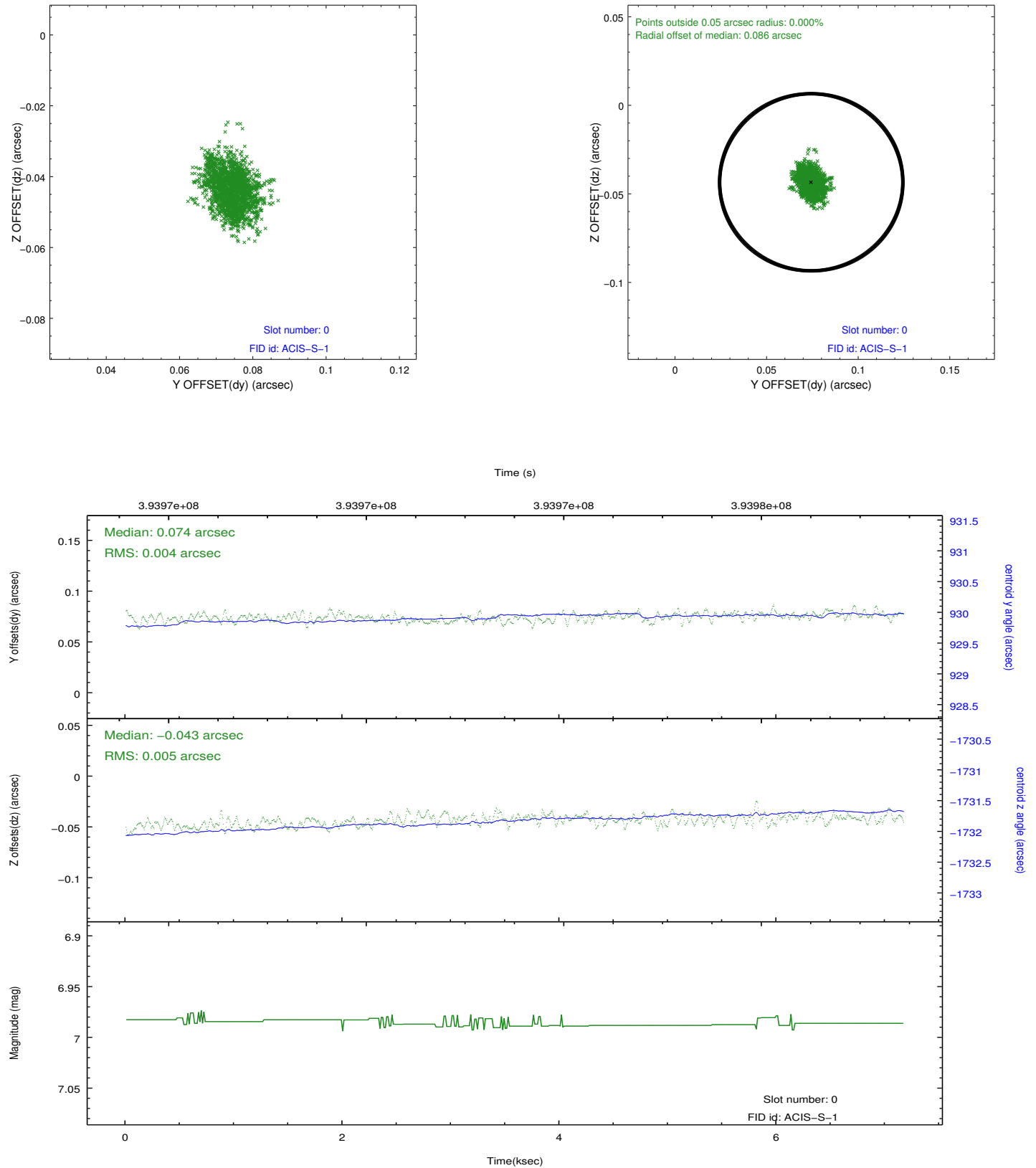


2.4.5 Slot 7

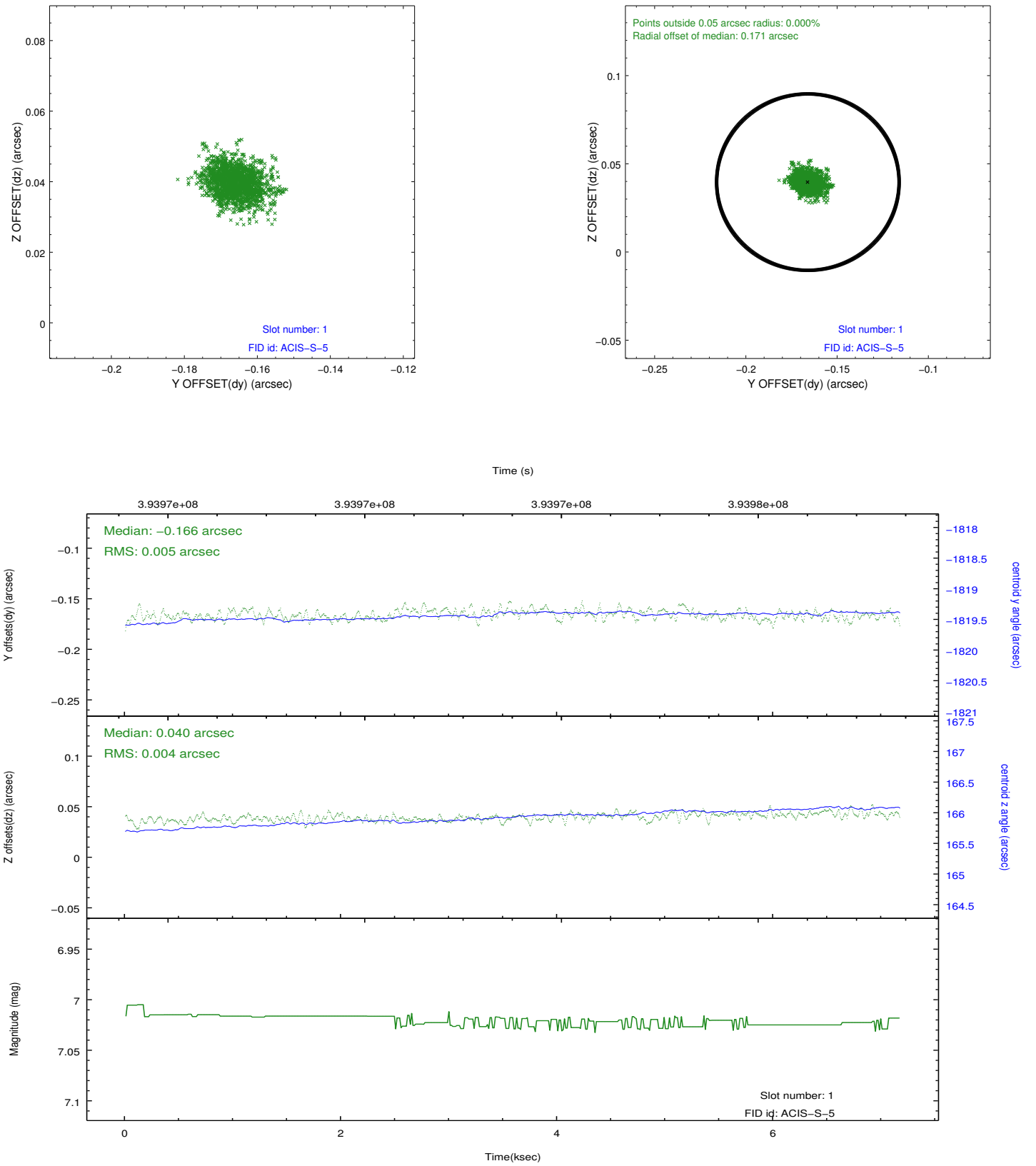


2.5 FID Slots

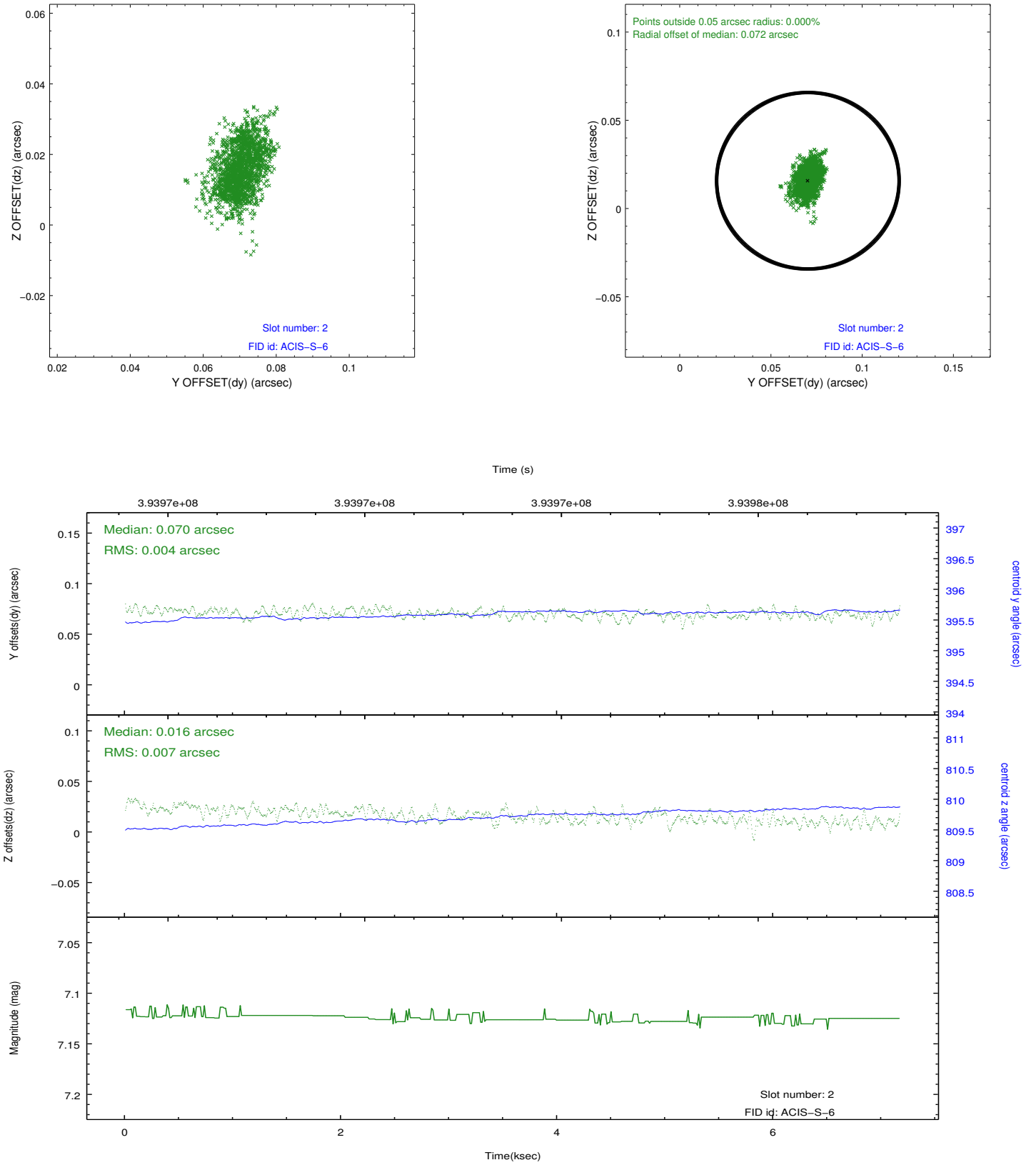
2.5.1 Slot 0



2.5.2 Slot 1



2.5.3 Slot 2



A Summary

A.1 Status

V&V Scientist	Jen Lauer
V&V Date (YYYY-MM-DD)	2012.07.06
V&V Edition	1
V&V Disposition and Status	OK
V&V Charge Time	7.027200104773

A.2 Comments