

V&V Reference Report

L2 ASCDS Version : 8.4.5

Observation 11383 - L2 Version 2
Chandra X-Ray Center

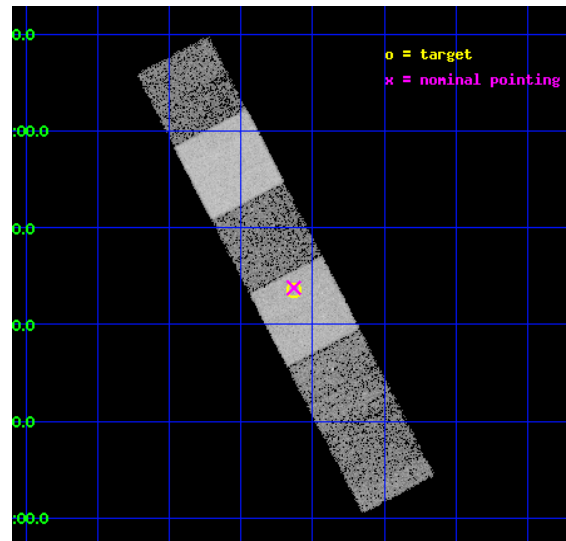
L2 Processing Date : Jun 19 2012

Contents

1	Front	2
2	OBI	3
2.1	OBI	3
2.1.1	Images	3
2.1.2	Bias	3
2.1.3	Parameters	4
2.1.4	Events	4
2.2	Compared Parameters	5
2.3	Aspect	6
2.4	Star Slots	9
2.4.1	Slot 3	9
2.4.2	Slot 4	10
2.4.3	Slot 5	11
2.4.4	Slot 6	12
2.4.5	Slot 7	13
2.5	FID Slots	14
2.5.1	Slot 0	14
2.5.2	Slot 1	15
2.5.3	Slot 2	16
A	Summary	17
A.1	Status	17
A.2	Comments	17

1 Front

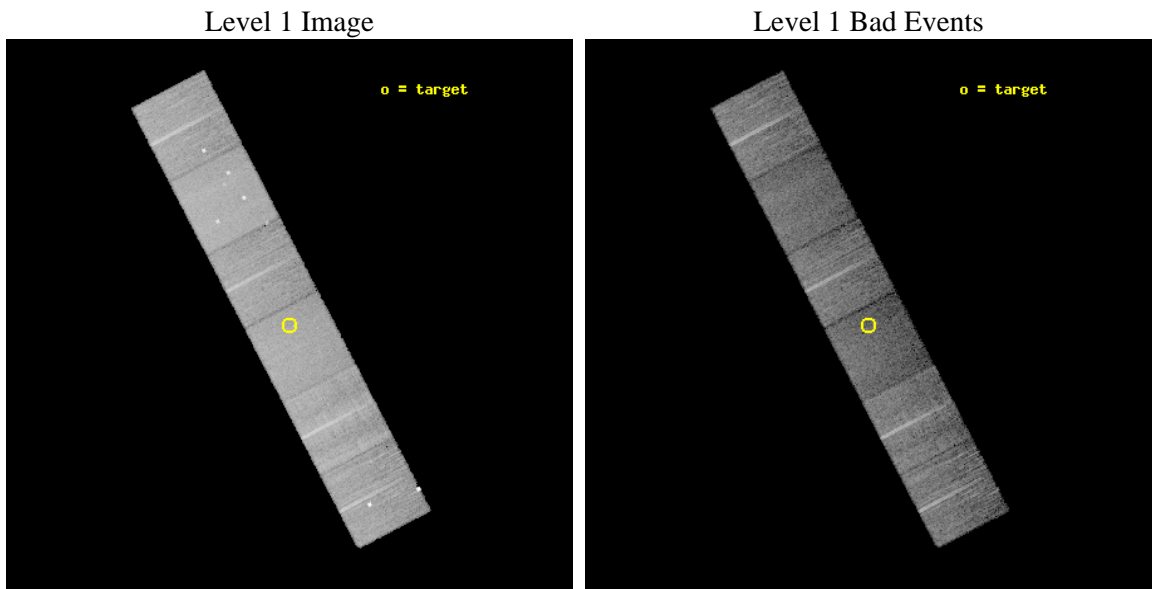
seq_num	600902	Sequence number
obs_id	11383	Observation id
title	Accretion onto nuclear black holes in early type galaxies: comparing field vs. clusters	Proposal title
observer	Elena Gallo	Principal investigator
object	SDSSJ150907.83+004329.7	Source name
dtcycle	0	
cycle	P	events from which exps? Prim/Second/Both
ra_targ	227.283	Observer's specified target RA [deg]
dec_targ	0.72477	Observer's specified target Dec [deg]
ra_nom	227.282641959	Nominal RA [deg]
dec_nom	0.72958726560886	Nominal Dec [deg]
roll_nom	62.449709413915	Nominal Roll [deg]
revision	2	Processing version of data
ontime	9475.0827370286	Sum of GTIs [s]
livetime	9355.1035342025	Livetime [s]
ontime4	9475.1237770319	Sum of GTIs [s]
ontime5	9475.0416970253	Sum of GTIs [s]
ontime6	9468.5187163949	Sum of GTIs [s]
ontime7	9475.0827370286	Sum of GTIs [s]
ontime8	9471.7186466455	Sum of GTIs [s]
ontime9	9474.9185770154	Sum of GTIs [s]
l2events	131048	Number of level 2 events



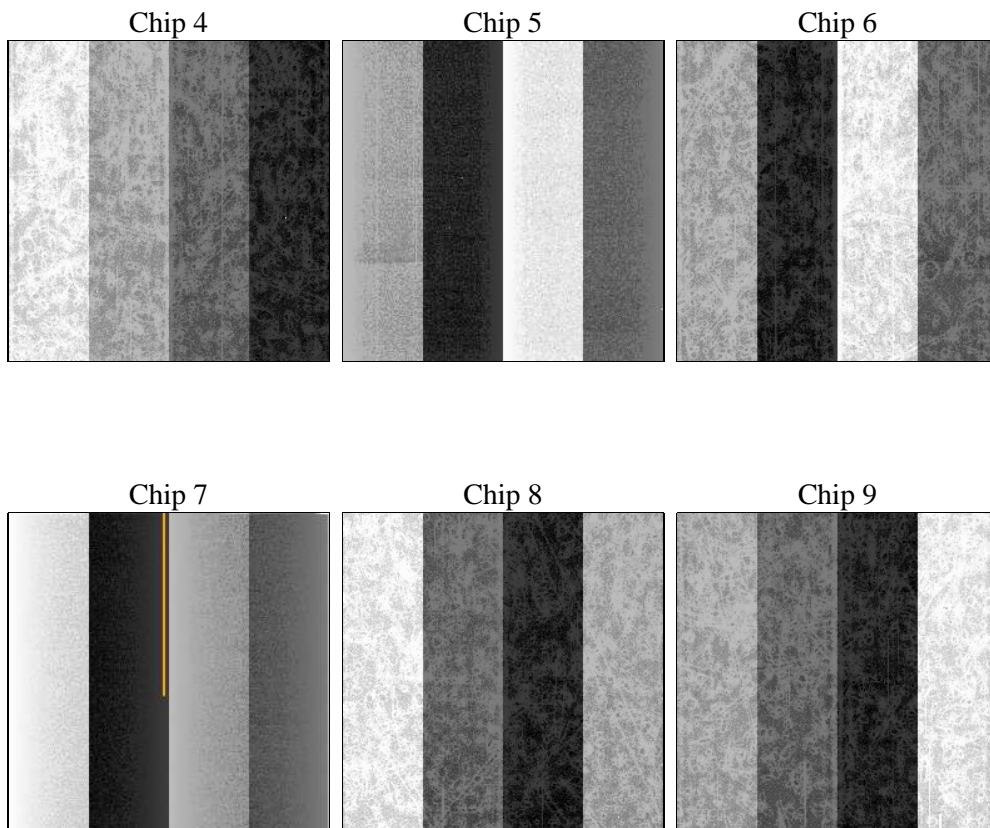
2 OBI

2.1 OBI

2.1.1 Images



2.1.2 Bias



2.1.3 Parameters

obi_num	0	Obi number	sched_exp_time	9720.819000	[s] Scheduled observation exposure time
ascdsver	8.4.5	Processing system revision	ontime	9475.0827370286	Sum of GTIs [s]
caldsver	4.4.10	 	ontime4	9475.1237770319	Sum of GTIs [s]
date	2012-06-19T07:13:55	Date and time of file creation	ontime5	9475.0416970253	Sum of GTIs [s]
revision	2	Processing version of data	ontime6	9468.5187163949	Sum of GTIs [s]
			ontime7	9475.0827370286	Sum of GTIs [s]
			ontime8	9471.7186466455	Sum of GTIs [s]
			ontime9	9474.9185770154	Sum of GTIs [s]
			l1events	590366	Number of level 1 events

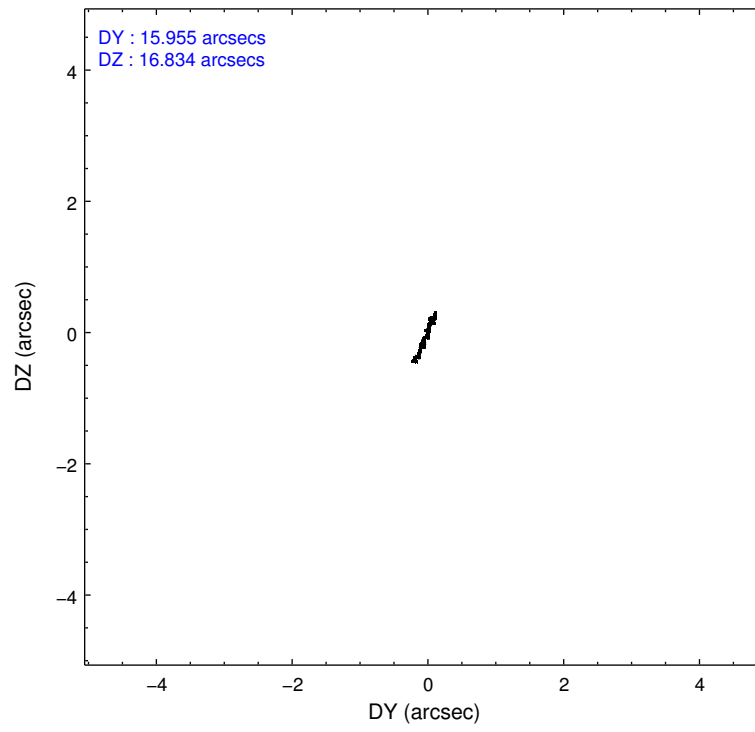
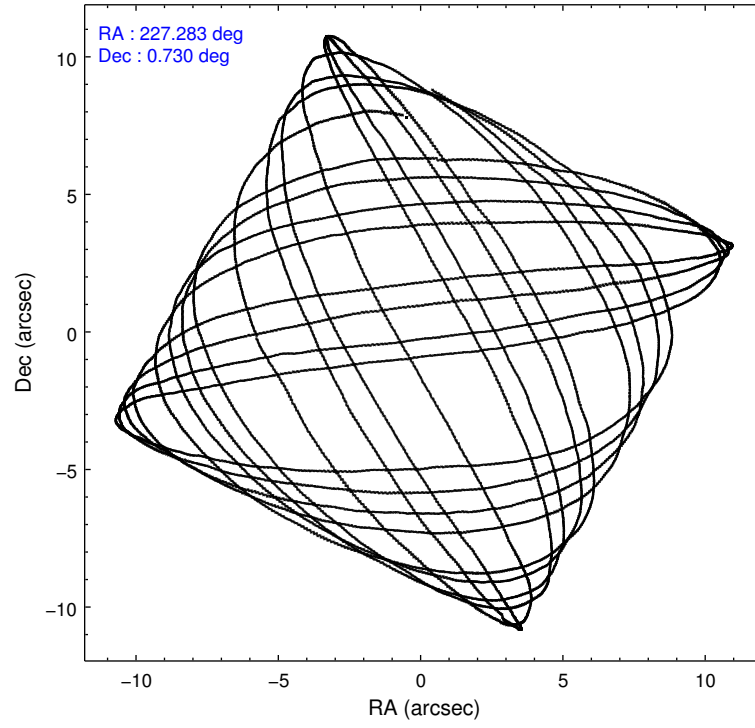
2.1.4 Events

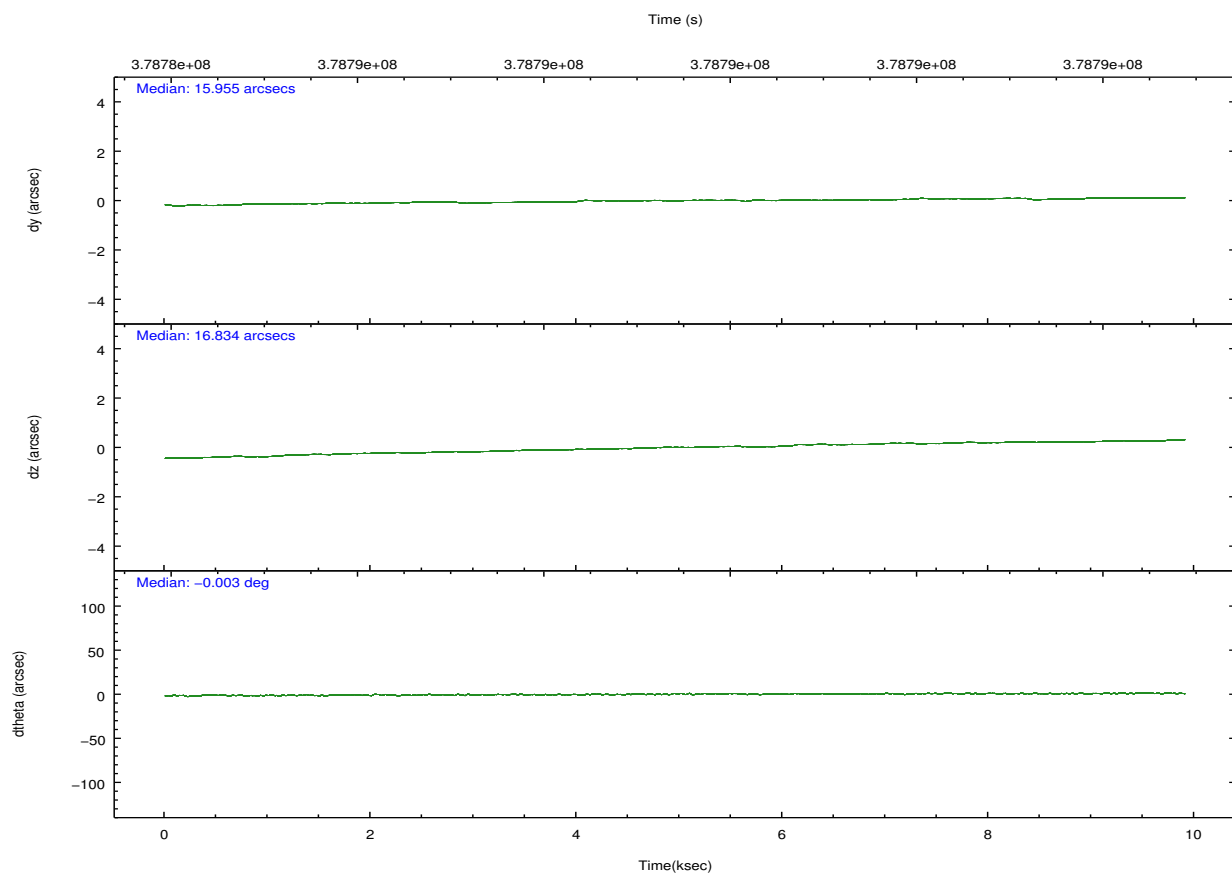
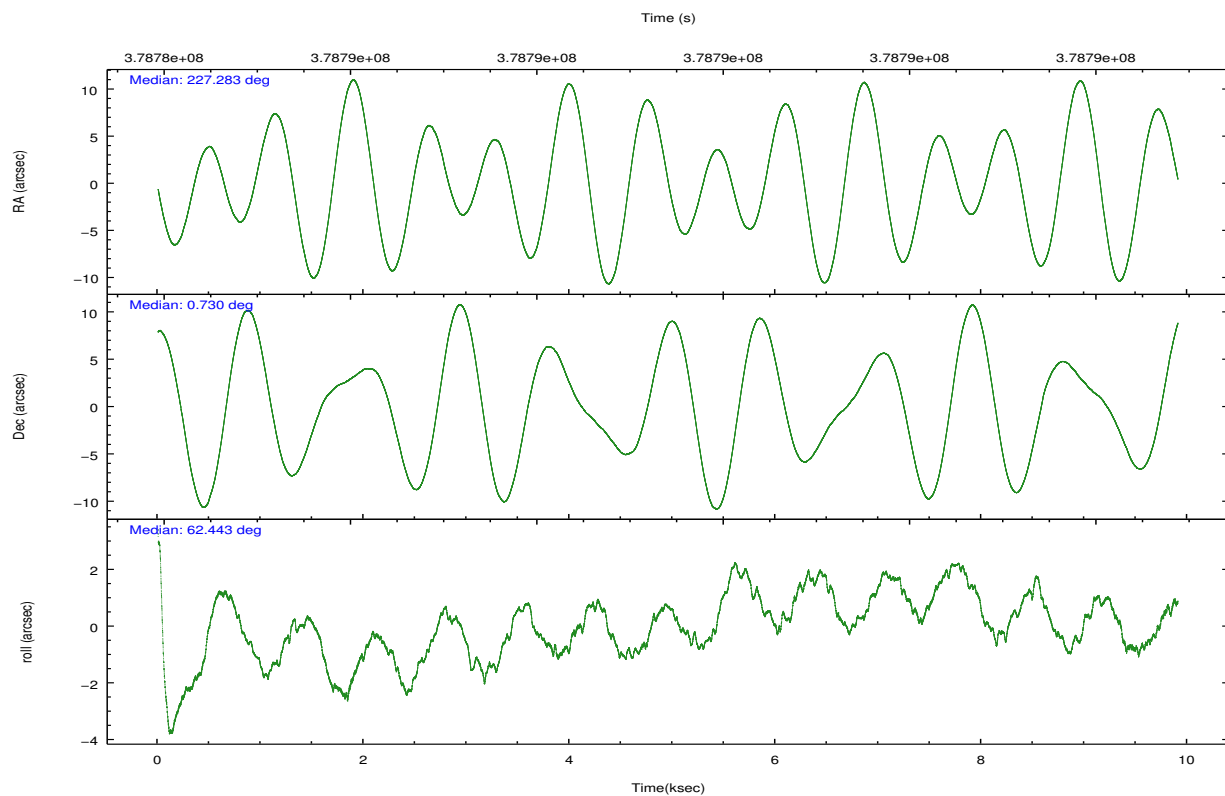
	ccd 4	ccd 5	ccd 6	ccd 7	ccd 8	ccd 9		ccd 4	ccd 5	ccd 6	ccd 7	ccd 8	ccd 9
level 1 events	93885	119885	84104	95351	108780	88361	grade 0 events	5270	7404	3336	4231	8470	9022
rejected events	82943	59161	75037	51693	81326	73400		5%	6%	3%	4%	7%	10%
rejected %	88%	49%	89%	54%	74%	83%	grade 1 events	77	239	54	154	93	88
								0%	0%	0%	0%	0%	0%
							grade 2 events	2158	17936	1962	9007	6305	1988
								2%	14%	2%	9%	5%	2%
							grade 3 events	1006	2366	943	3907	2858	1015
								1%	1%	1%	4%	2%	1%
							grade 4 events	906	2194	958	3925	2563	961
								0%	1%	1%	4%	2%	1%
							grade 5 events	3374	9102	3338	9604	4986	3713
								3%	7%	3%	10%	4%	4%
							grade 6 events	1608	30863	1876	22599	7271	1987
								1%	25%	2%	23%	6%	2%
							grade 7 events	79486	49781	71637	41924	76234	69587
								84%	41%	85%	43%	70%	78%

2.2 Compared Parameters

Parameter	Planned	Actual	Parameter	Planned	Actual
Instrument	ACIS	ACIS	Obspar format version number	7	7
Detector	ACIS-456789	ACIS-456789	Obspar file type	PREDICTED	ACTUAL
Grating	NONE	NONE	Obspar update status	NONE	UPDATED
Data mode	VFAINT	VFAINT	CCD I0 on	N	N
Observation mode	POINTING	POINTING	CCD I1 on	N	N
[deg] Pointing RA	227.284189	227.2826419589984	CCD I2 on	N	N
[deg] Pointing Dec	0.702307	0.7295872656088551	CCD I3 on	N	N
[deg] Pointing Roll	62.293064	62.44970941391545	CCD S0 on	O1	Y
[mm] SIM focus pos	-0.684267	-0.6828225247311905	CCD S1 on	Y	Y
[mm] SIM defocus	0	0.001444936568705701	CCD S2 on	Y	Y
[mm] SIM translation stage pos	-190.132523	-190.1425803651734	CCD S3 on	Y	Y
[mm] SIM translation stage offset	0	0.01005778216563158	CCD S4 on	Y	Y
[s] Observation start time (MET)	378784644.184000	378784268.1789	CCD S5 on	O2	Y
Observation start date	2010-01-02T01:56:18	2010-01-02T01:51:08	Number of optional ACIS chips dropped	0	0
[s] Observation end time (MET)	378794365.184000	378794589.41693	On-chip summing requested	N	N
Observation end date	2010-01-02T04:38:19	2010-01-02T04:43:09	Subarray requested	NONE	NONE
Read mode	TIMED	TIMED	Alternating exposures requested	N	N
			[s] Primary exposure time	0.000000	3.2

2.3 Aspect



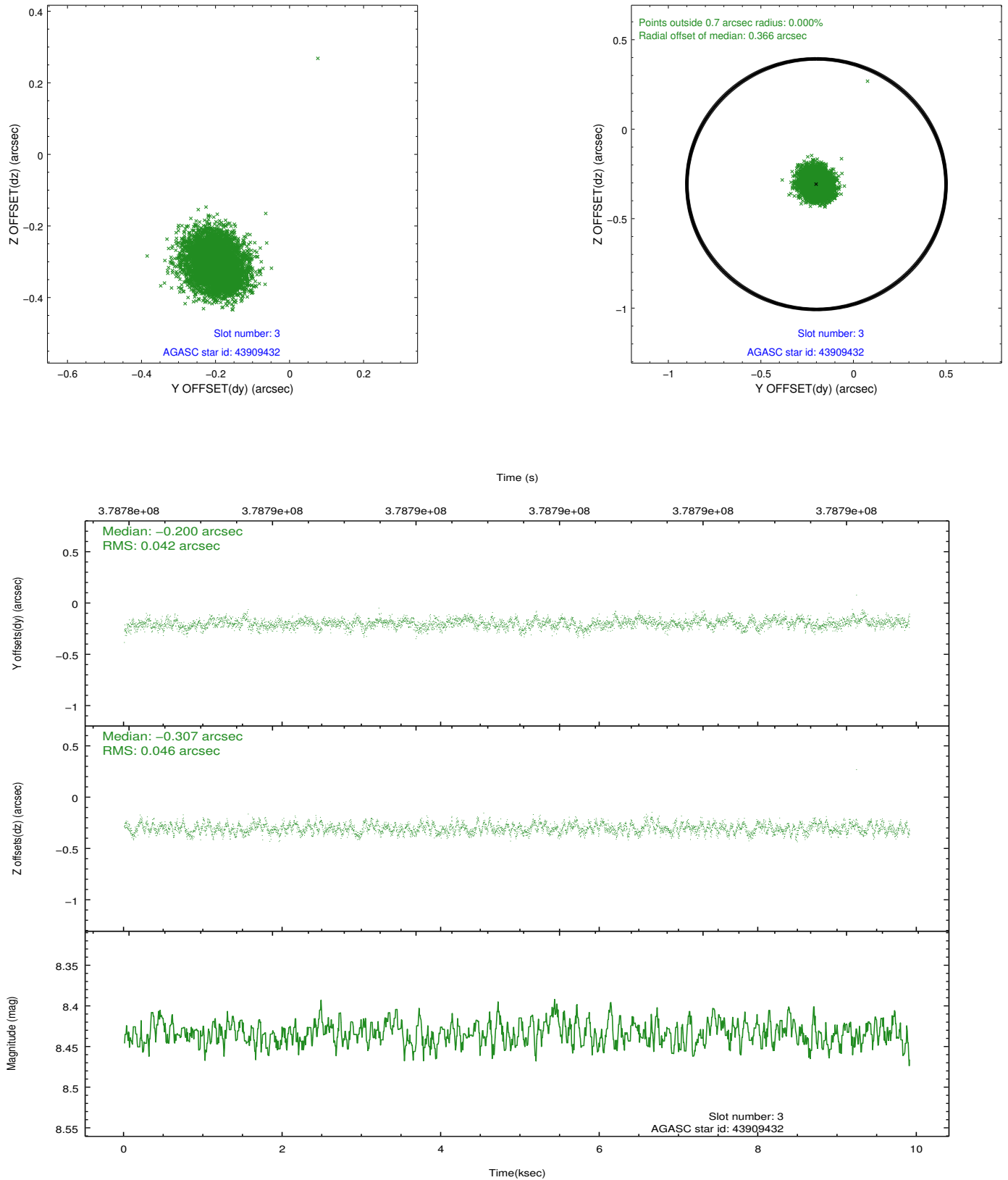


Slot Statistics

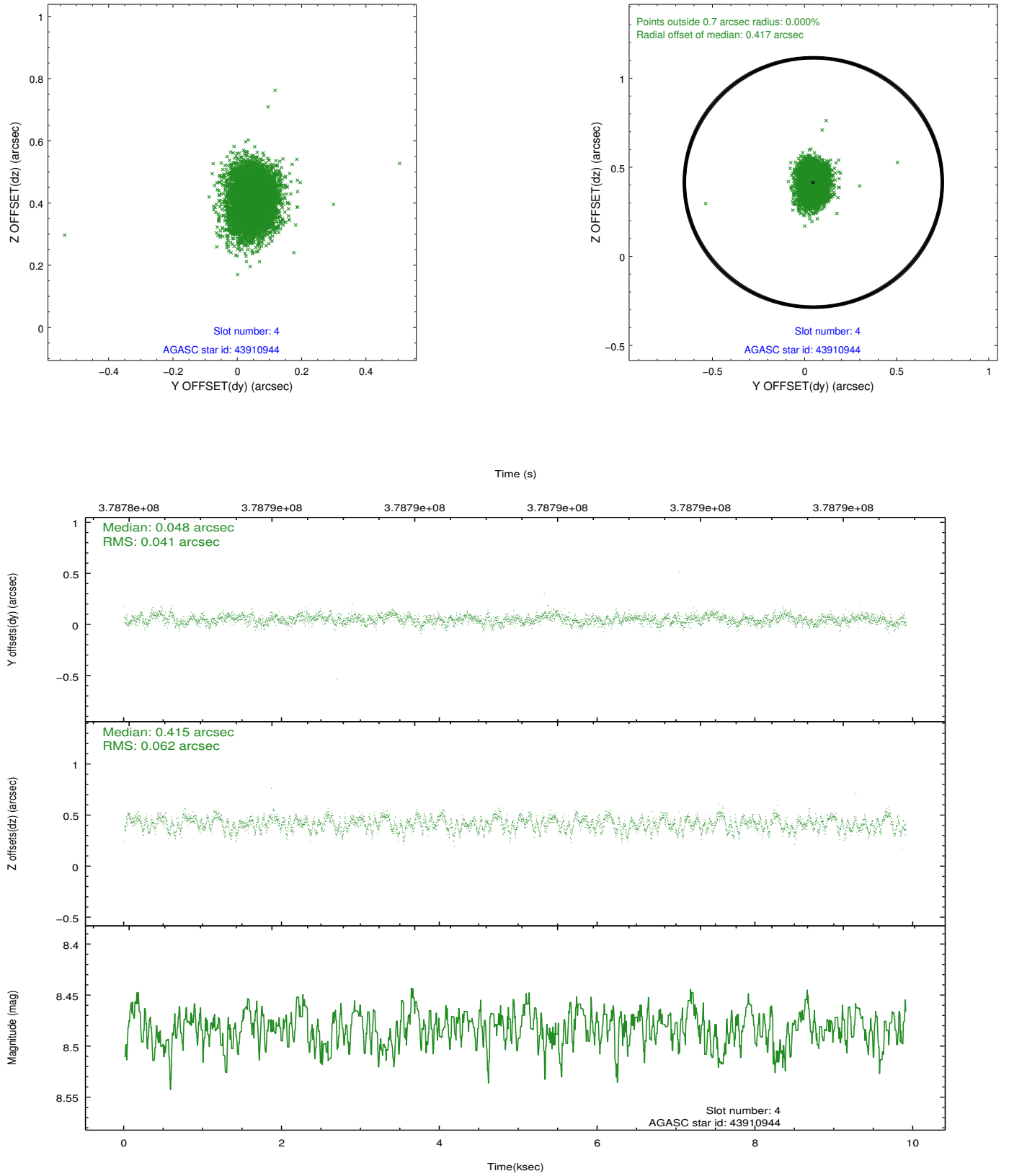
slot	status	id	mag	n_pts	med_dy	med_dz	dr1	dr2	ra	dec	mean_y	mean_z
0	FID	ACIS-S-2	6.90	2416	-0.073	-0.022	0.010	0.017	0.000000	0.000000	-769.03	-1738.19
1	FID	ACIS-S-4	6.98	2416	0.160	0.041	0.007	0.013	0.000000	0.000000	2144.26	169.76
2	FID	ACIS-S-5	7.01	2416	-0.117	-0.011	0.010	0.016	0.000000	0.000000	-1821.20	164.04
3	GUIDE	43909432	8.43	4832	-0.200	-0.307	0.067	0.103	227.032488	1.308525	1510.80	1816.68
4	GUIDE	43910944	8.48	4828	0.048	0.415	0.078	0.125	227.692284	0.133576	-1129.08	-2251.86
5	GUIDE	43914248	7.61	4832	0.014	0.283	0.067	0.109	227.423769	0.723096	299.91	-410.06
6	GUIDE	43914912	10.17	4824	-0.016	0.030	0.149	0.241	227.041952	0.534950	-938.63	491.88
7	GUIDE	43779416	8.80	4827	0.154	-0.418	0.088	0.142	226.465052	0.567068	-1802.16	2383.84

2.4 Star Slots

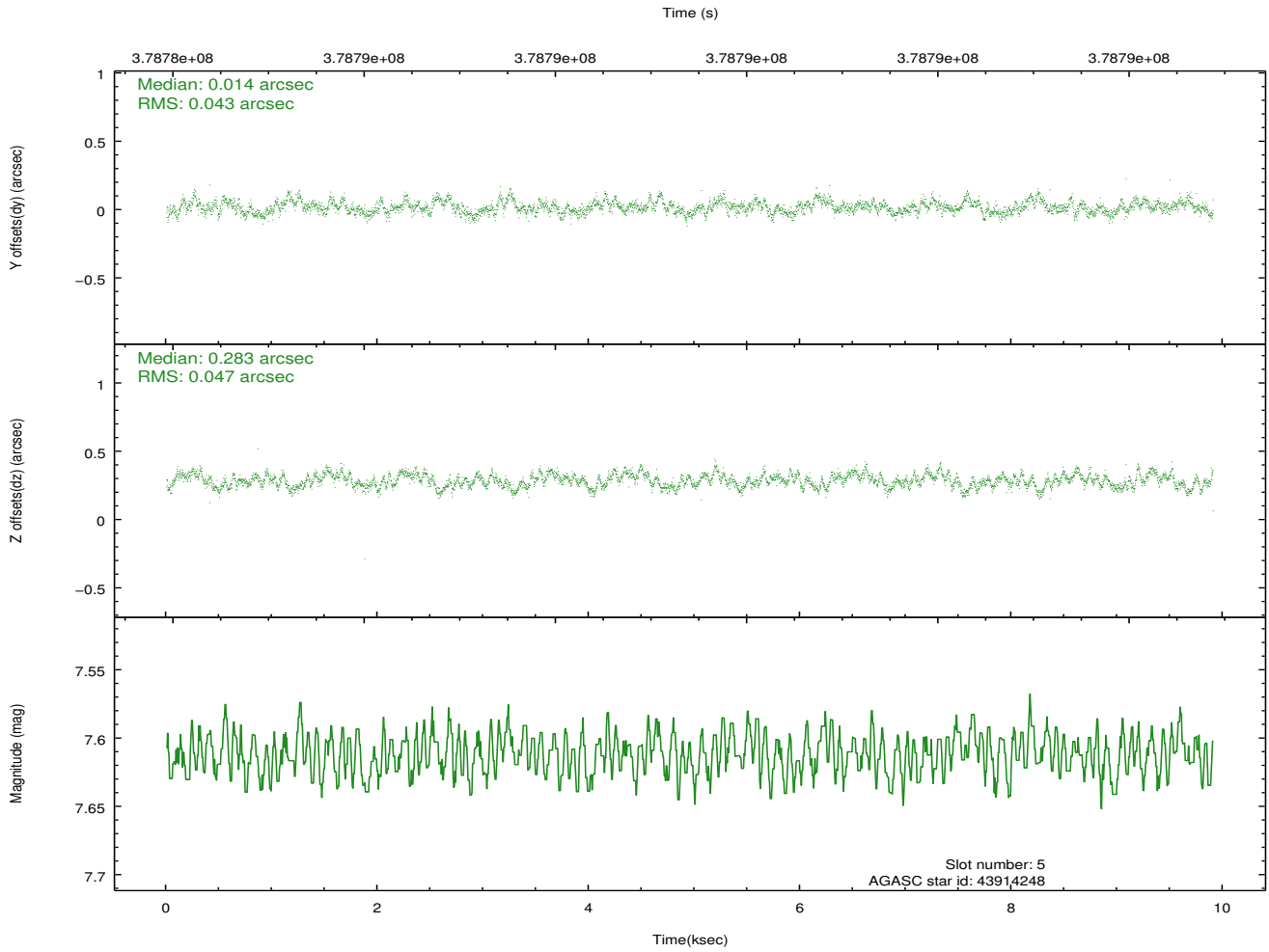
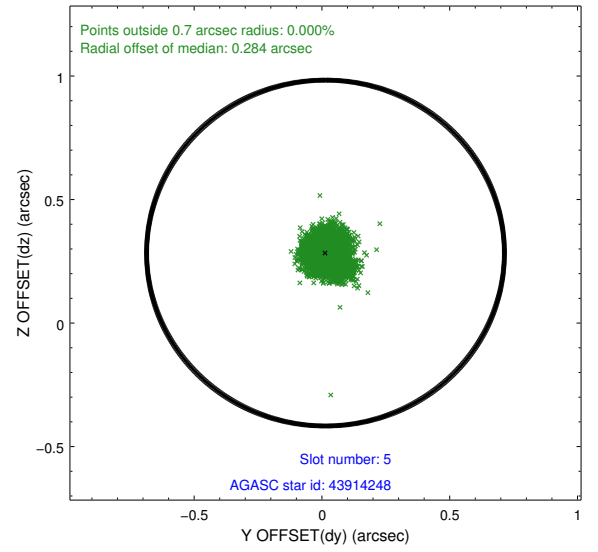
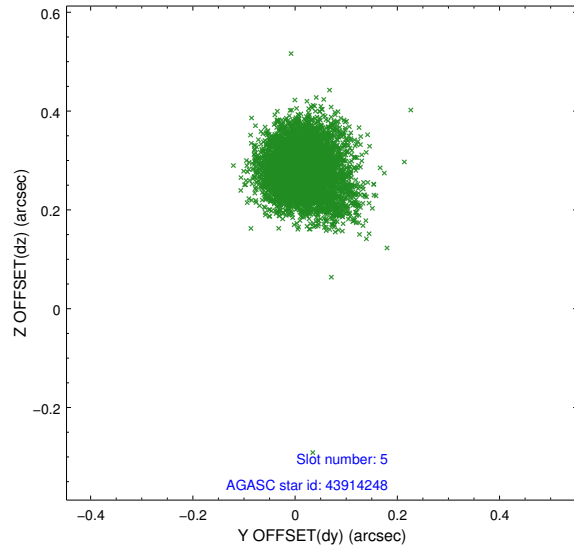
2.4.1 Slot 3



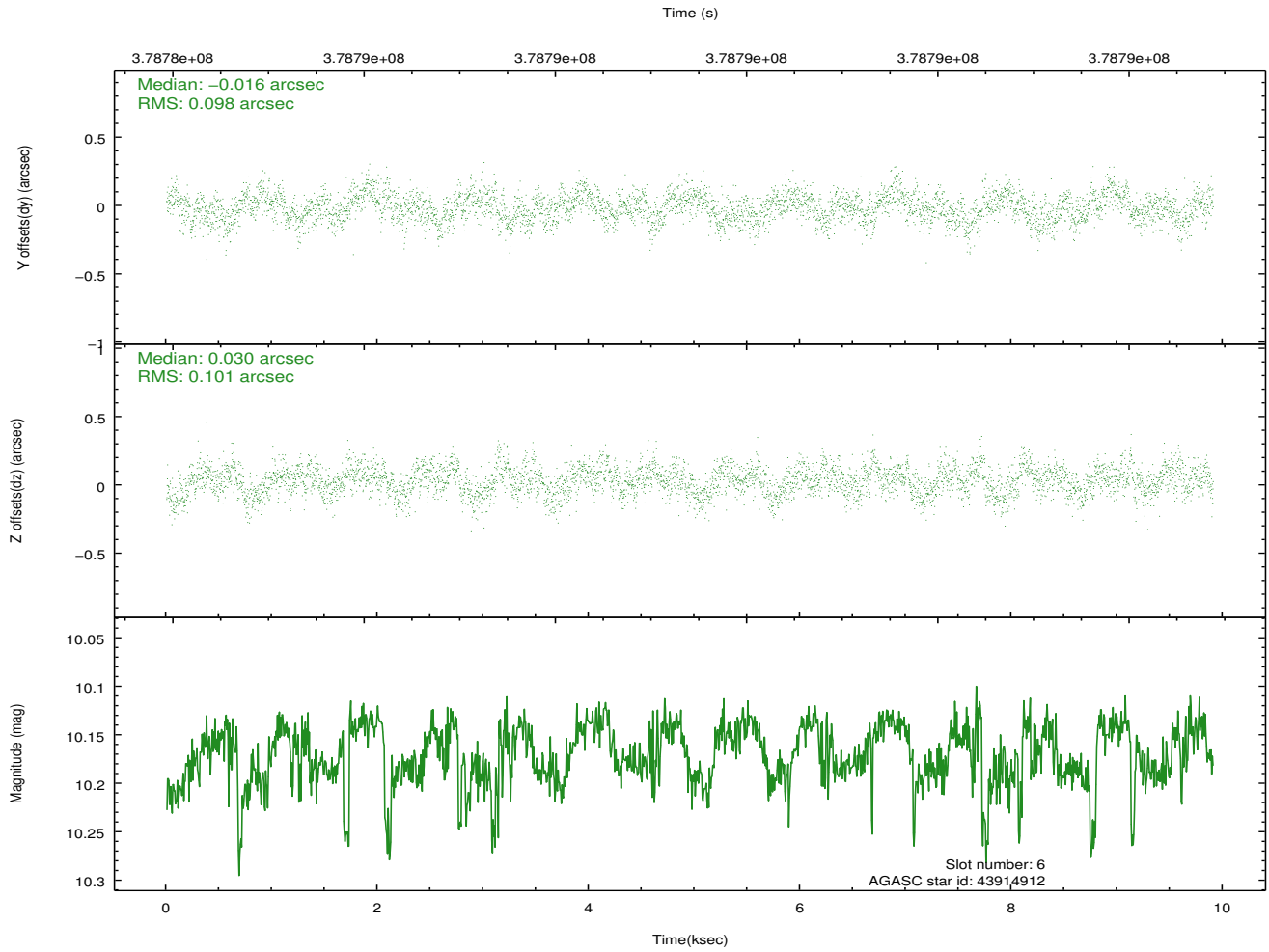
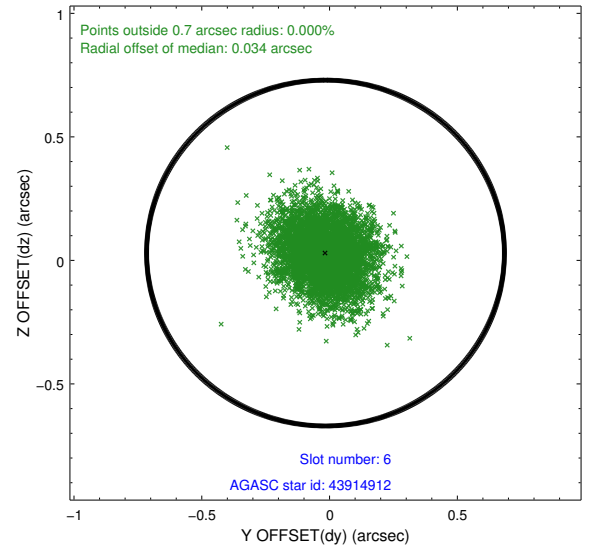
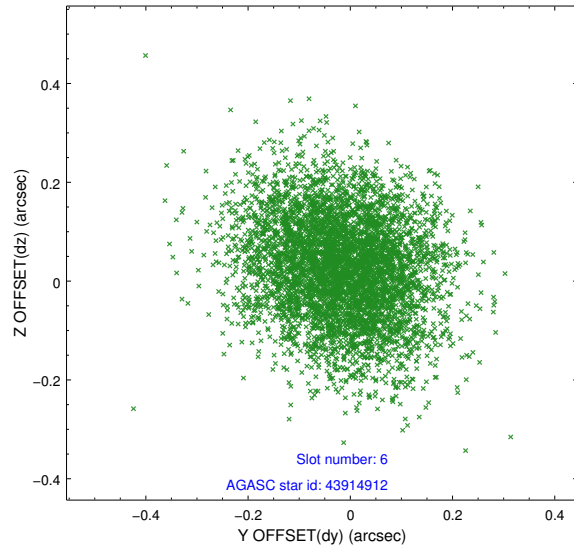
2.4.2 Slot 4



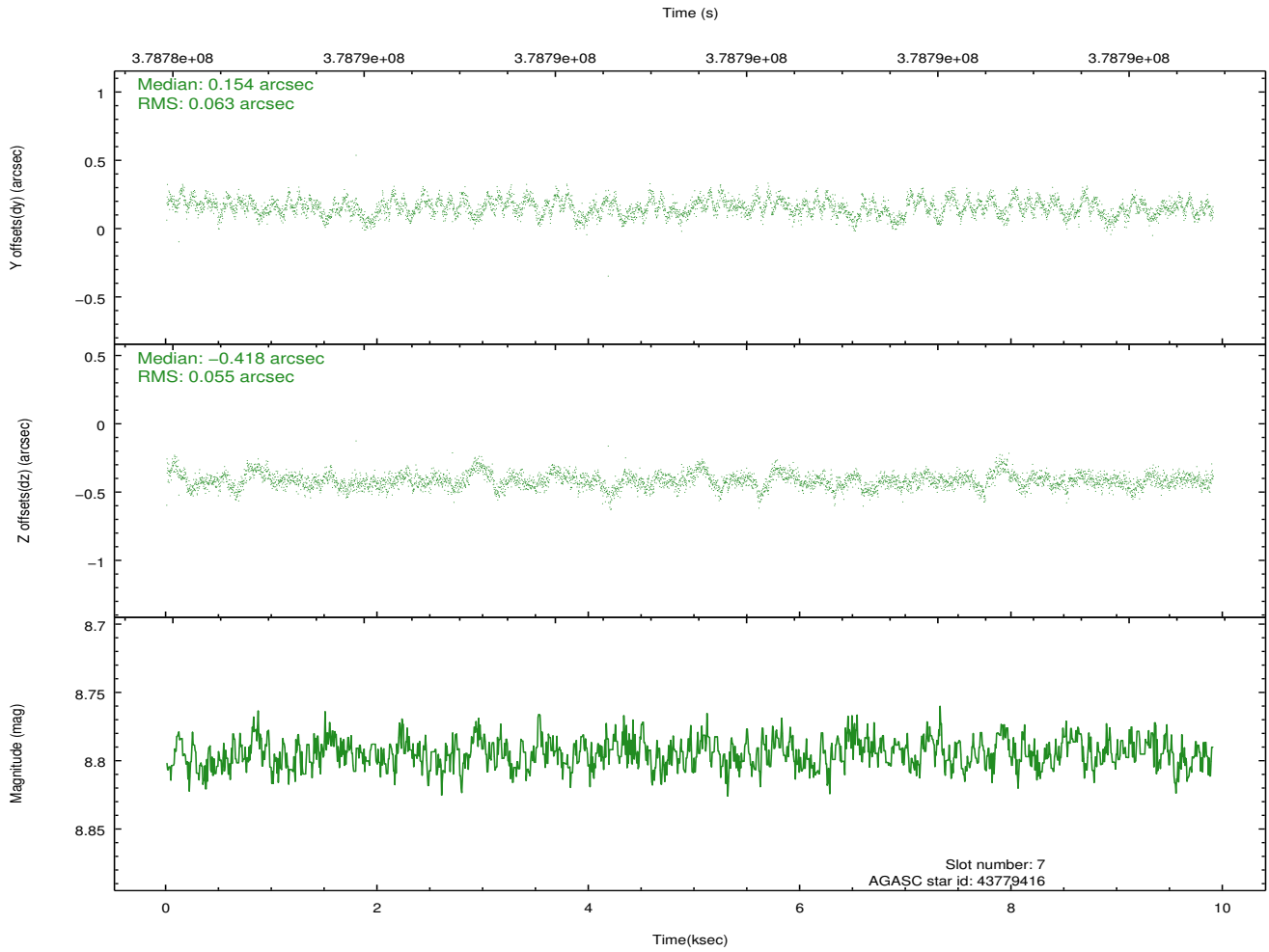
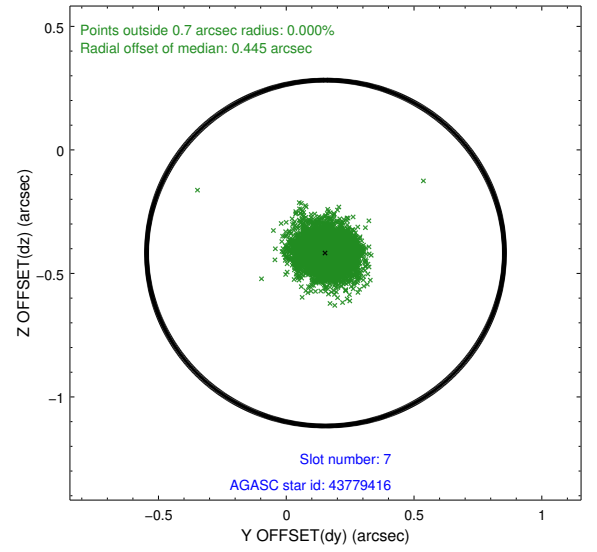
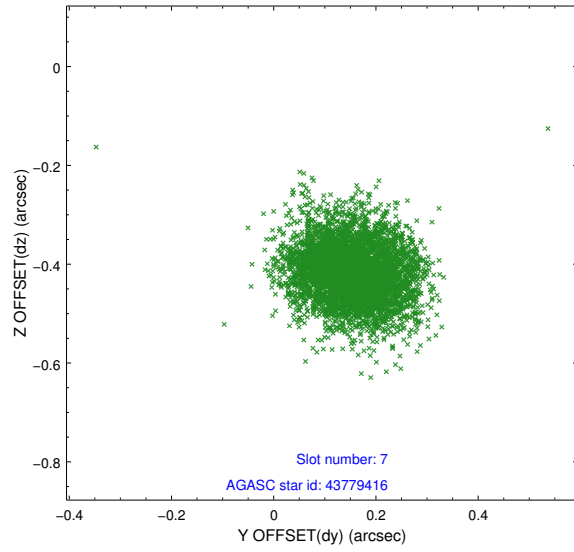
2.4.3 Slot 5



2.4.4 Slot 6

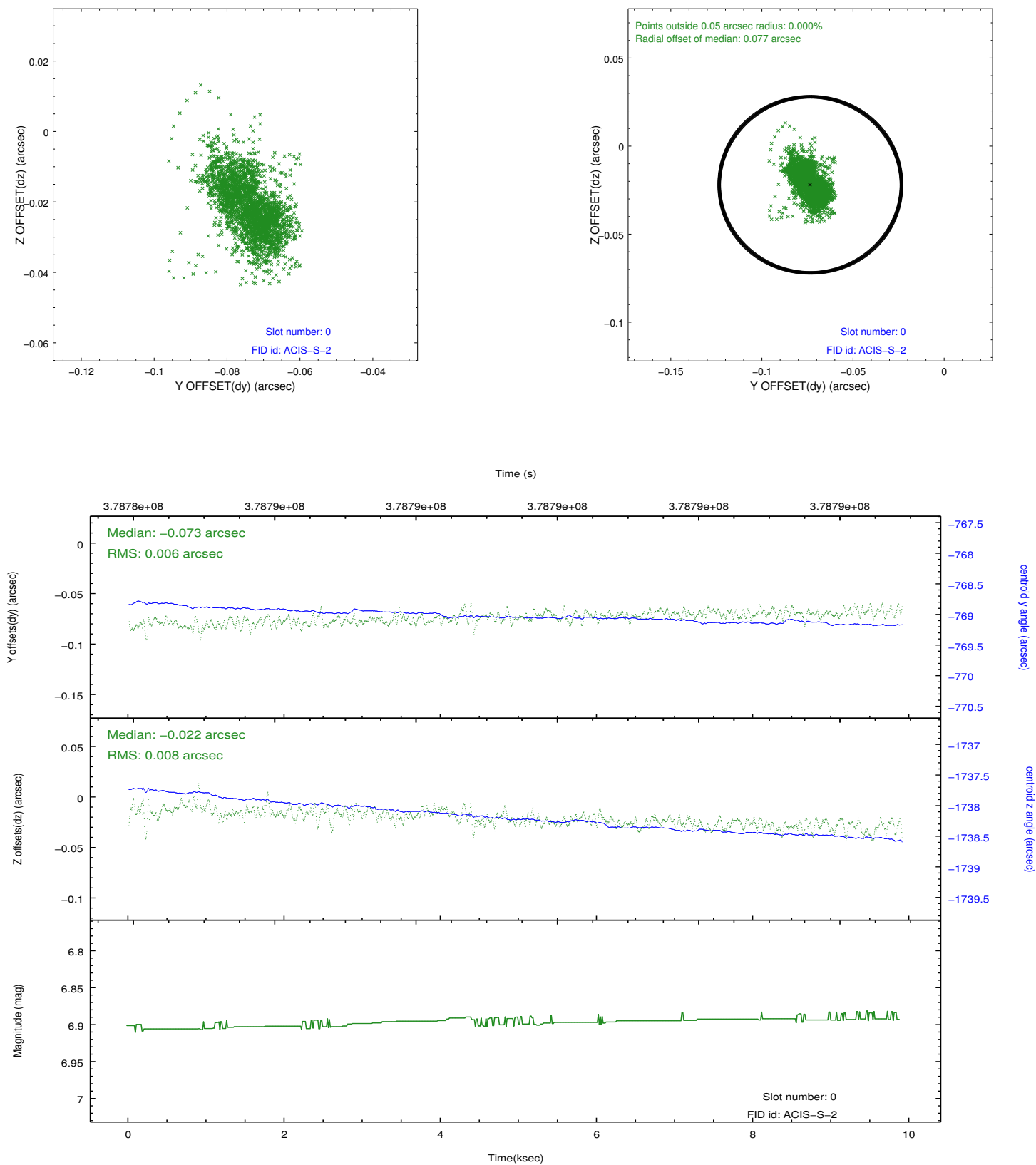


2.4.5 Slot 7

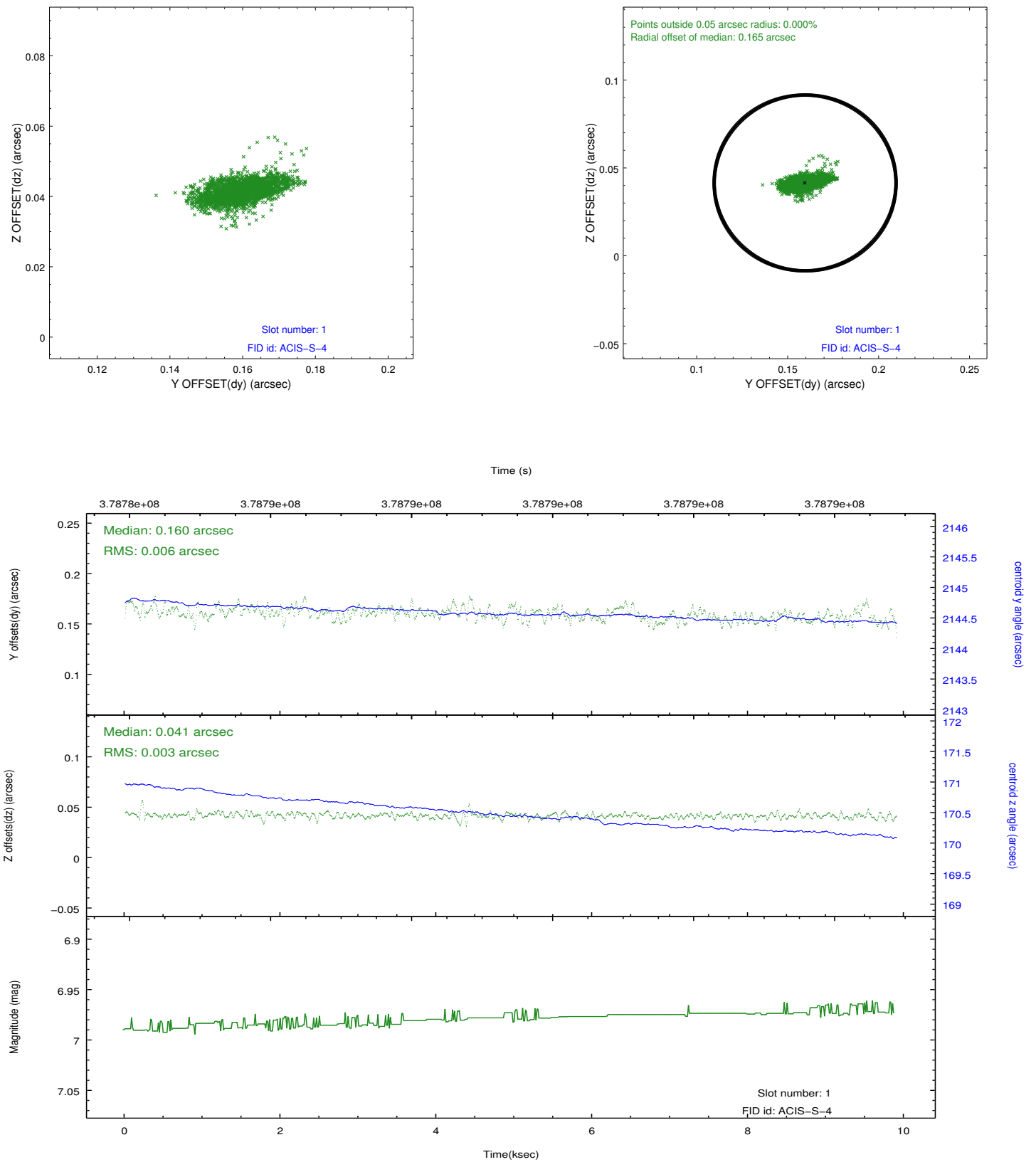


2.5 FID Slots

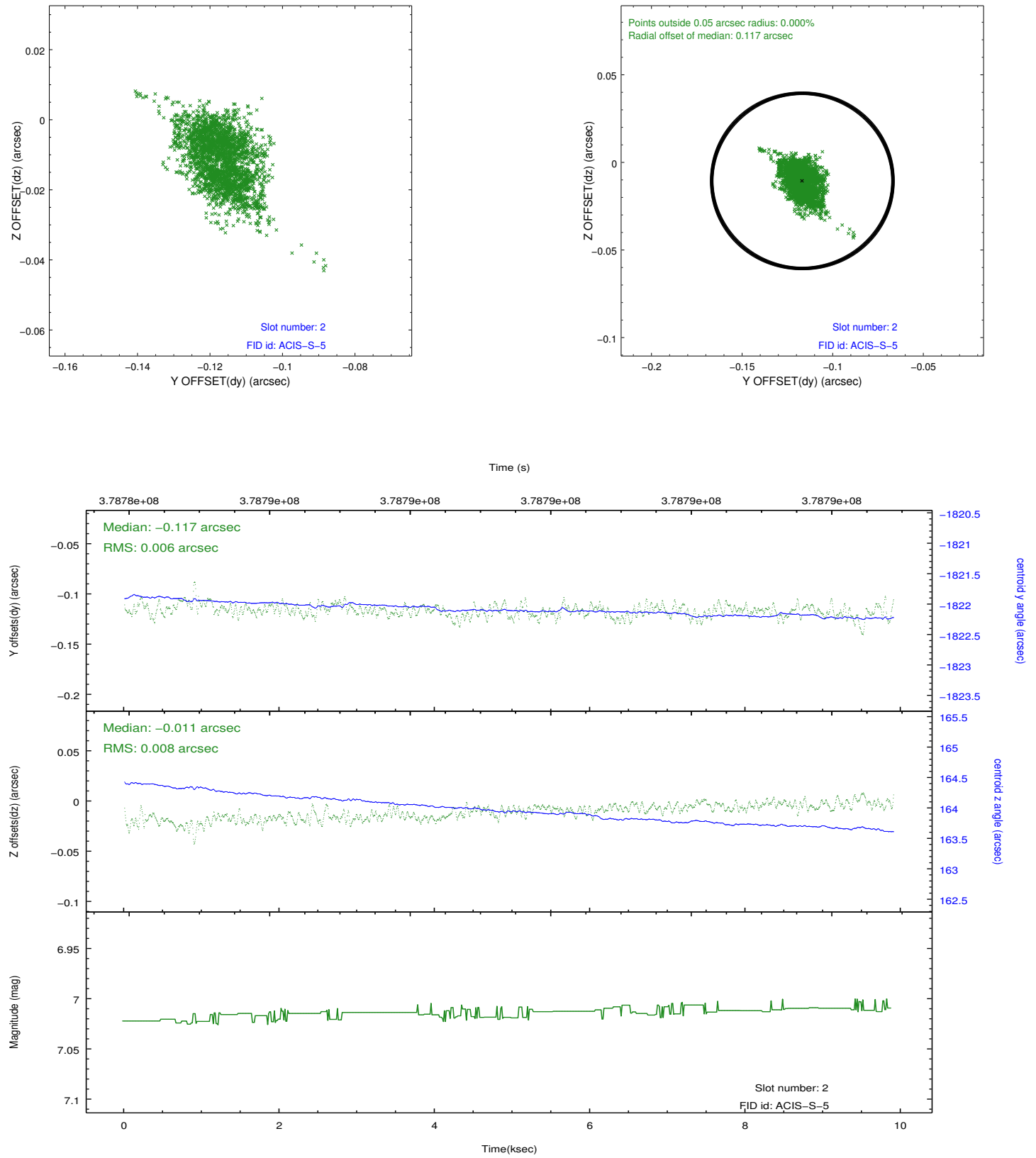
2.5.1 Slot 0



2.5.2 Slot 1



2.5.3 Slot 2



A Summary

A.1 Status

V&V Scientist	Jen Lauer
V&V Date (YYYY-MM-DD)	2012.06.25
V&V Edition	1
V&V Disposition and Status	OK
V&V Charge Time	9.4750827410817

A.2 Comments