

V&V Reference Report

L2 ASCDS Version : 7.6.10

Observation 1023 - L2 Version 001
Chandra X-Ray Center

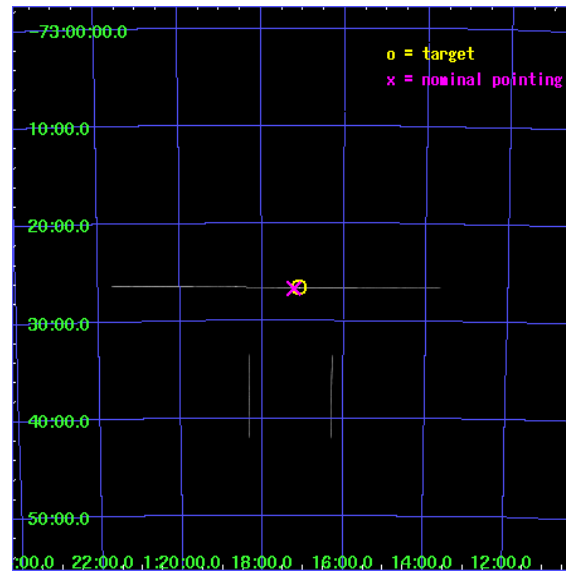
L2 Processing Date : Jun 12 2007

Contents

1	Front	2
2	OBI	3
2.1	OBI	3
2.1.1	Images	3
2.1.2	Bias	3
2.1.3	Parameters	4
2.1.4	Events	4
2.2	Compared Parameters	5
2.3	Aspect	6
2.4	Star Slots	9
2.4.1	Slot 3	9
2.4.2	Slot 4	10
2.4.3	Slot 5	11
2.4.4	Slot 6	12
2.4.5	Slot 7	13
2.5	FID Slots	14
2.5.1	Slot 0	14
2.5.2	Slot 1	15
2.5.3	Slot 2	16
A	Summary	17
A.1	Status	17
A.2	Comments	17

1 Front

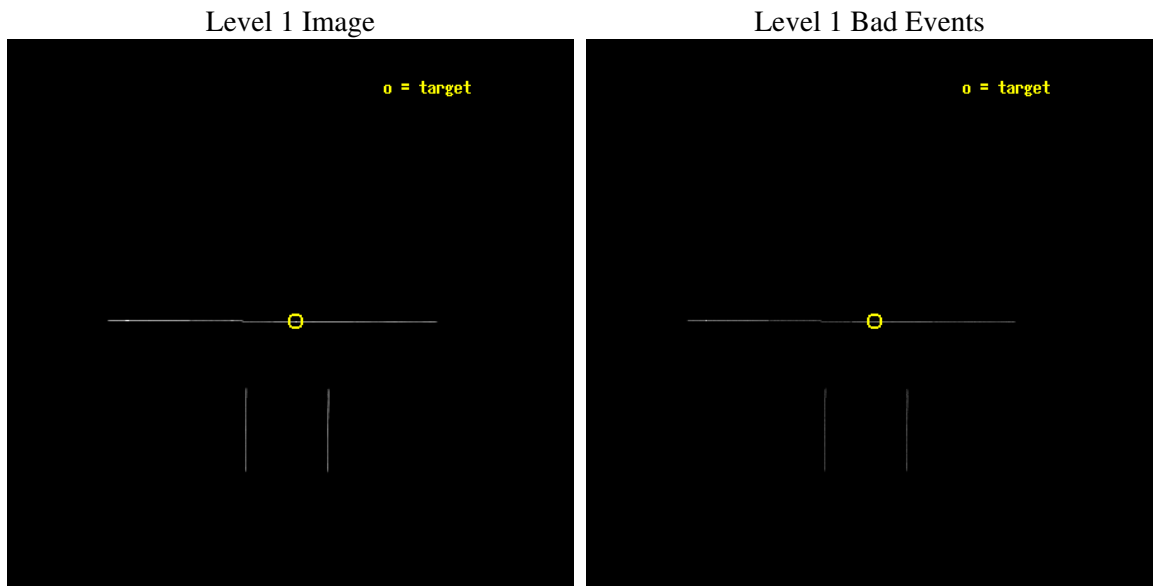
seq_num	400101
obs_id	1023
title	HIGH RESOLUTION UV/X-RAY SPECTROSCOPY OF SMC X-1
observer	Dr. Saeqa Vrtilek
object	SMC X-1
ra_targ	19.271667
dec_targ	-73.442944
ra_nom	19.305904464388
dec_nom	-73.444673289092
roll_nom	0.29053367484242
revision	3
ontime	6190.5
livetime	6166.318359375
ontime2	6190.5
ontime3	6190.5
ontime5	6190.5
ontime6	6190.5
ontime7	6190.5
ontime8	6190.5
l2events	71426



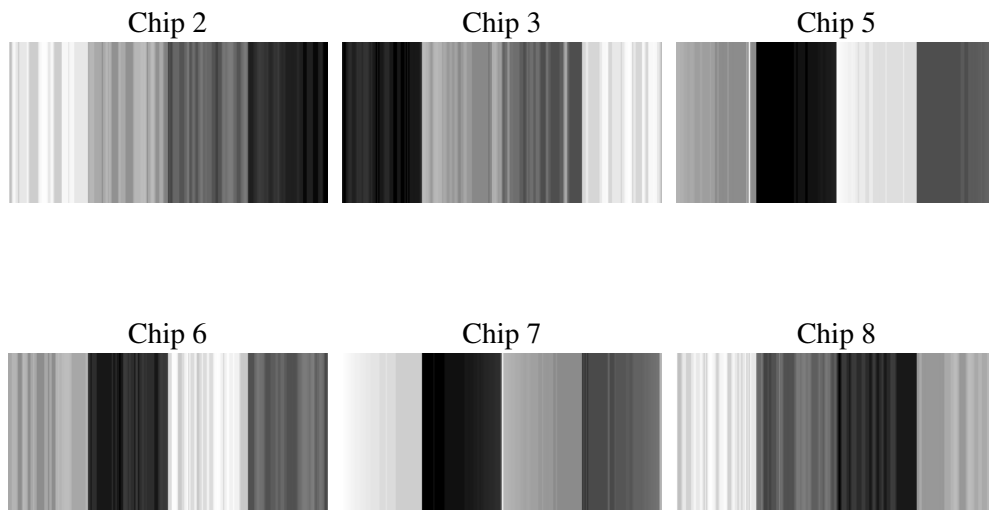
2 OBI

2.1 OBI

2.1.1 Images



2.1.2 Bias



2.1.3 Parameters

obi_num	0
ascdsver	7.6.10
caldsver	3.4.0
date	2007-06-12T07:16:57
revision	3

sched_exp_time	6000.000000
ontime	6190.5
ontime2	6190.5
ontime3	6190.5
ontime5	6190.5
ontime6	6190.5
ontime7	6190.5
ontime8	6190.5
l1events	120222

2.1.4 Events

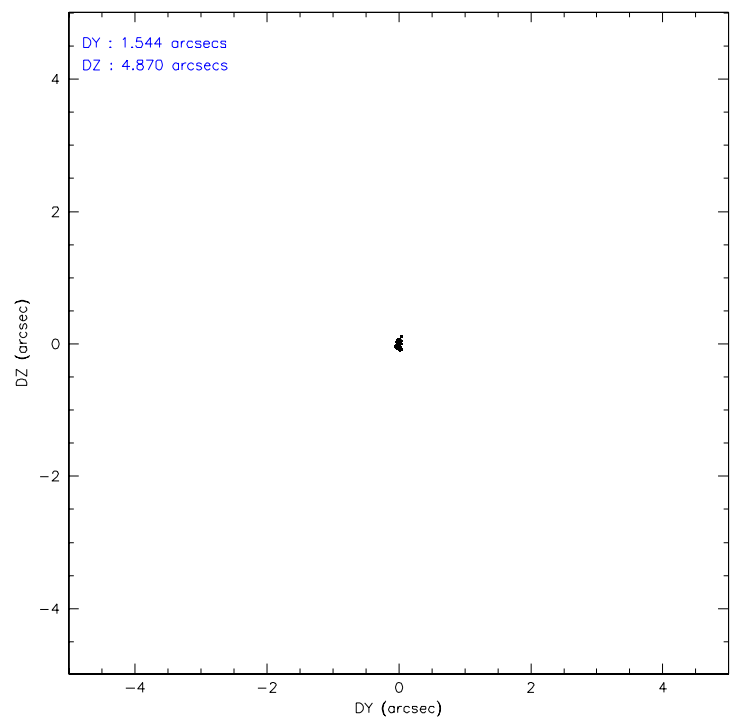
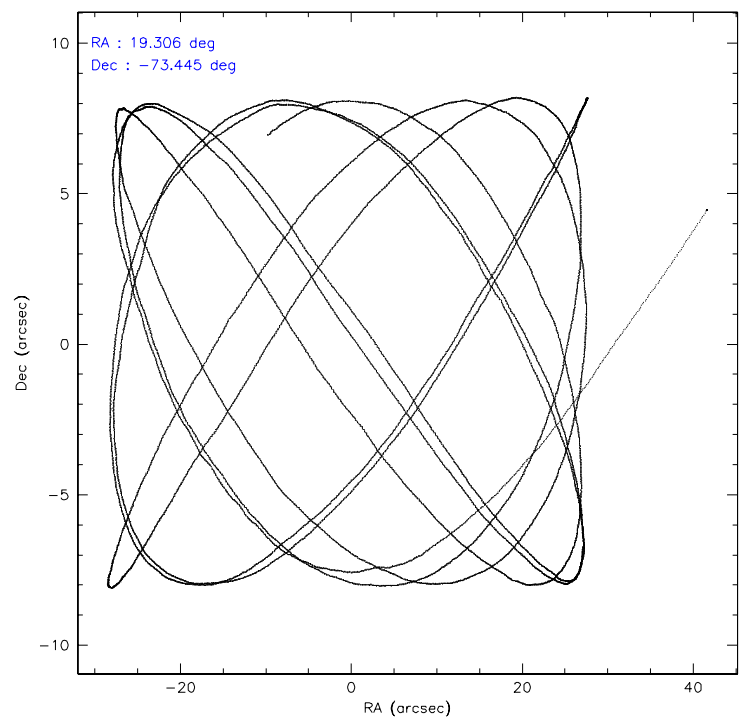
	ccd 2	ccd 3	ccd 5	ccd 6	ccd 7	ccd 8
level 1 events	8277	8899	43079	9924	33792	16251
rejected events	2269	2475	8776	2538	7643	3777
rejected %	27%	27%	20%	25%	22%	23%

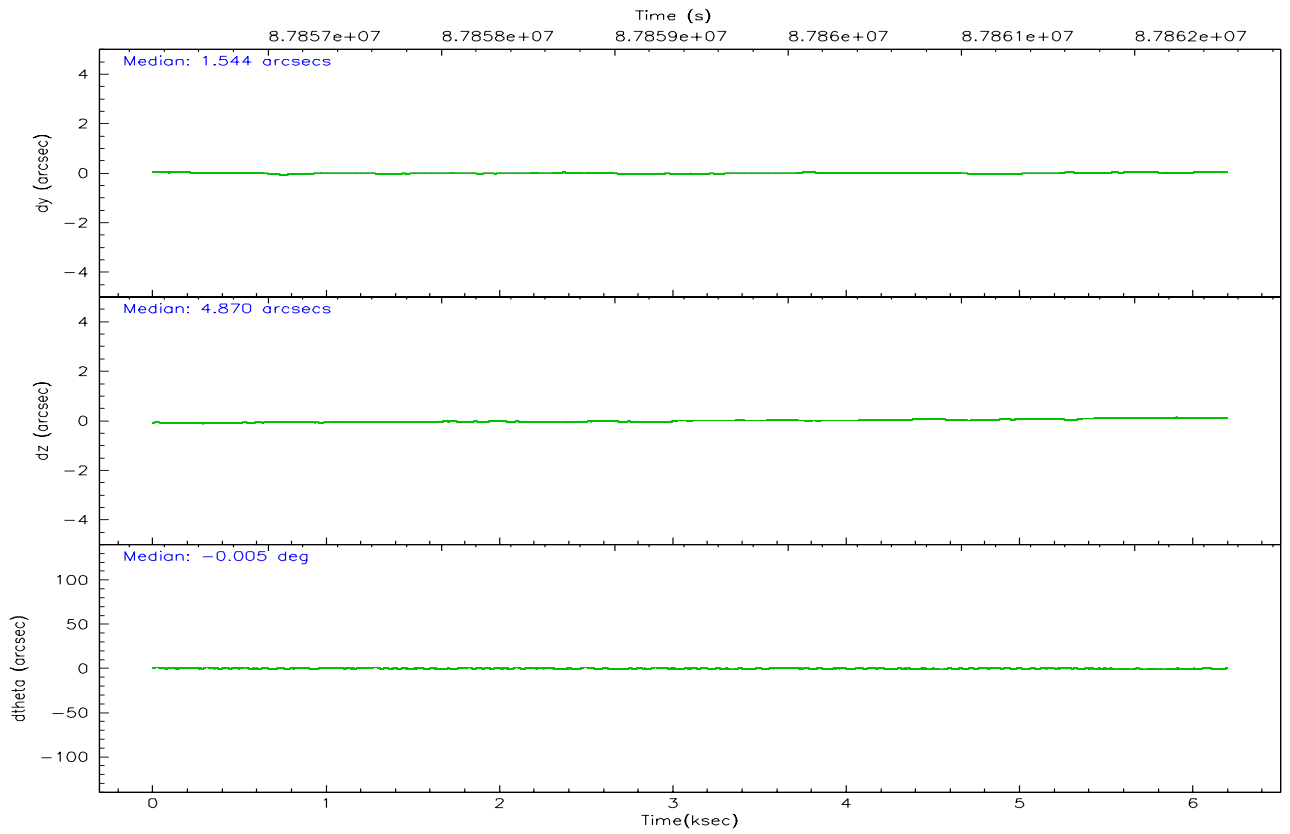
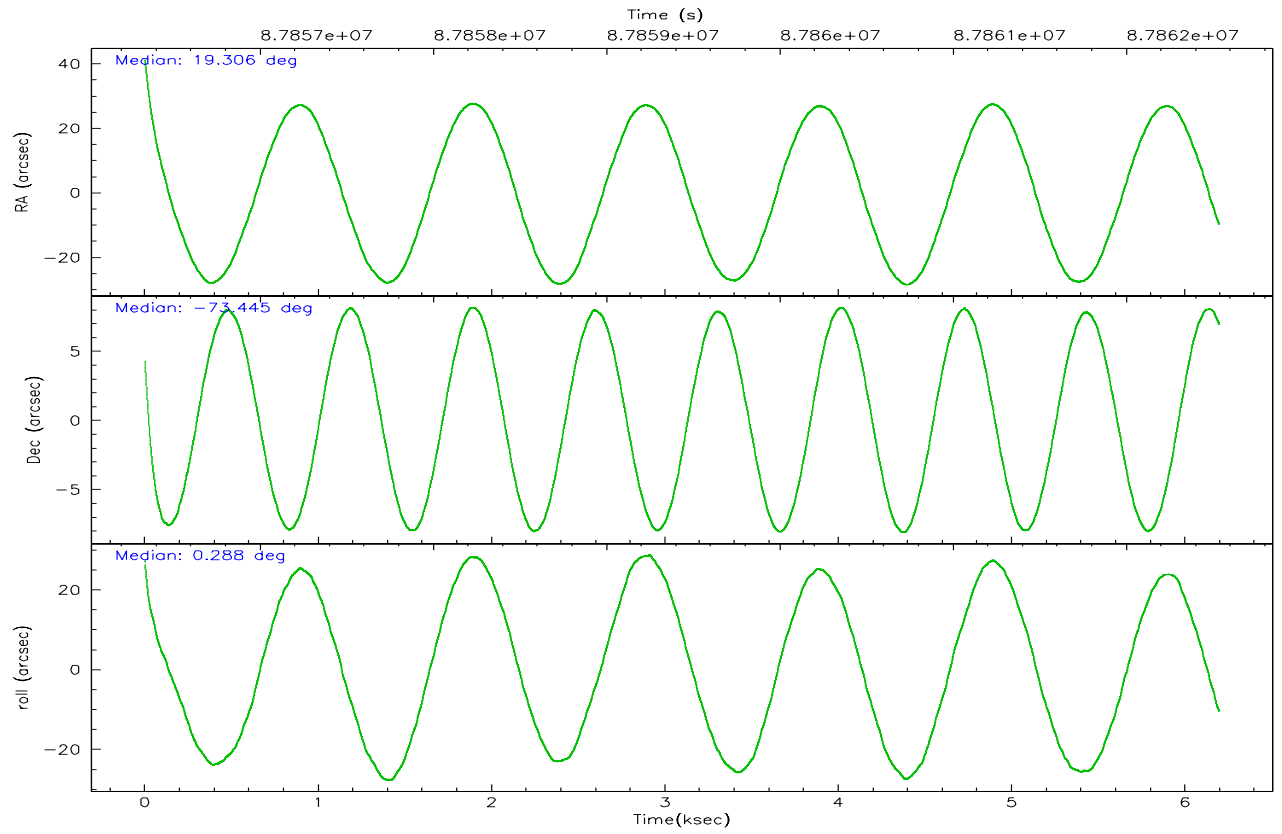
	ccd 2	ccd 3	ccd 5	ccd 6	ccd 7	ccd 8
grade 0 events	915	986	12566	975	4559	2740
	11%	11%	29%	9%	13%	16%
grade 1 events	25	29	50	28	57	50
	0%	0%	0%	0%	0%	0%
grade 2 events	2525	2645	10004	3386	7055	4238
	30%	29%	23%	34%	20%	26%
grade 3 events	1038	1227	892	1171	2579	1871
	12%	13%	2%	11%	7%	11%
grade 4 events	1084	1052	862	1129	2625	1719
	13%	11%	2%	11%	7%	10%
grade 5 events	1387	1429	3734	1525	4685	2143
	16%	16%	8%	15%	13%	13%
grade 6 events	1303	1531	14971	1710	12232	3490
	15%	17%	34%	17%	36%	21%
grade 7 events	0	0	0	0	0	0
	0%	0%	0%	0%	0%	0%

2.2 Compared Parameters

Parameter	Planned	Actual	Parameter	Planned	Actual
Instrument	ACIS	ACIS	Obspar format version number	6	6
Detector	ACIS-235678	ACIS-235678	Obspar file type	PREDICTED	ACTUAL
Grating	NONE	NONE	Obspar update status	NONE	UPDATED
Data mode	CC33_FAINT	CC33_FAINT	Number of optional ACIS chips dropped	0	0
Observation mode	POINTING	POINTING	On-chip summing requested	N	N
Pointing RA	19.223183	19.30590446438758	Subarray requested	NONE	NONE
Pointing Dec	-73.458651	-73.44467328909168	Alternating exposures requested	N	N
Pointing Roll	0.054624	0.2905336748424167	Primary exposure time	0.000000	0
SIM focus pos (mm)	-0.684267	-0.6828225247311905			
SIM defocus (mm)	0	0.001444936568705701			
SIM translation stage pos (mm)	-190.132523	-190.1400660498719			
SIM translation stage offset (mm)	0	0.00754346686406393			
Phase constraints	Y	Y			
Phase period	3.892000	3.892000			
Phase epoch	50141.466800	50141.466800			
Phase start	0.000000	0.000000			
Phase end	0.800000	0.800000			
Phase start error	0.050000	0.050000			
Phase end error	0.050000	0.050000			
Observation start time	87856534.184000	87855442.61596701			
Observation start date	2000-10-13T20:34:30	2000-10-13T20:17:22			
Observation end time	87862534.184000	87863222.87876			
Observation end date	2000-10-13T22:14:30	2000-10-13T22:27:02			
Read mode	CONTINUOUS	CONTINUOUS			

2.3 Aspect



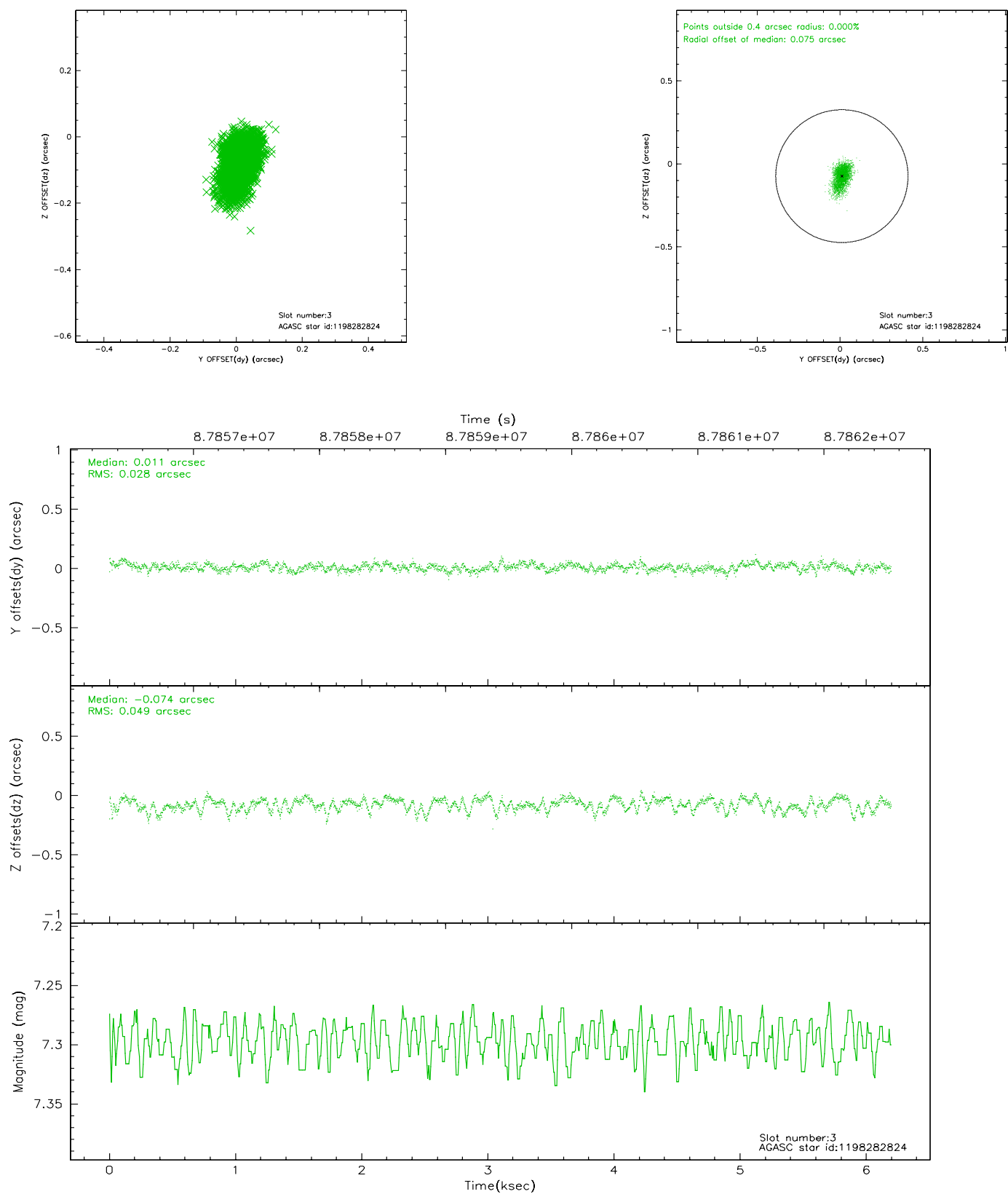


Slot Statistics

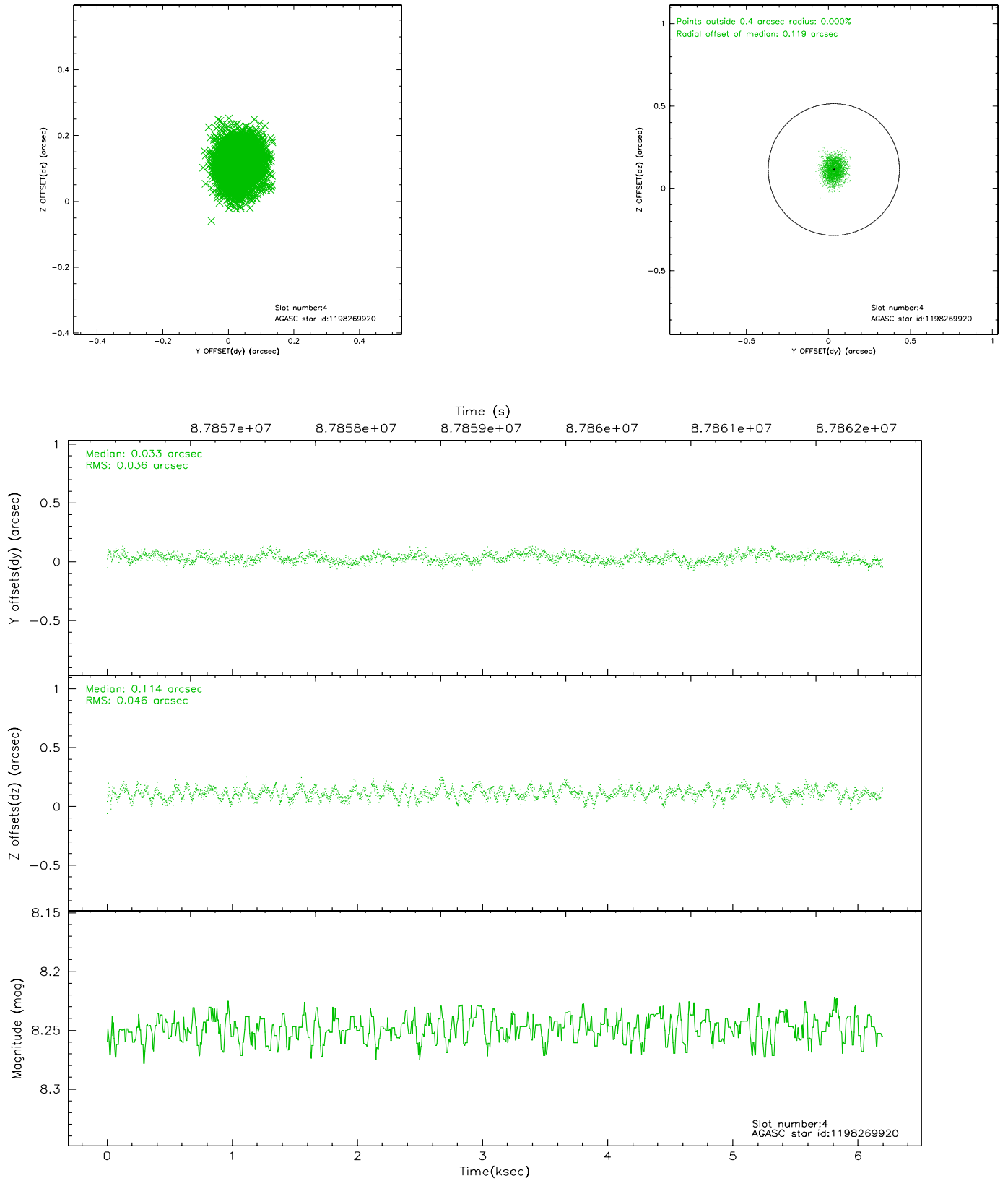
slot	status	id	mag	n_pts	med_dy	med_dz	dr1	dr2	ra	dec	mean_y	mean_z
0	FID	ACIS-S-2	7.12	1512	-0.031	0.015	0.006	0.010	0.000000	0.000000	-754.16	-1725.98
1	FID	ACIS-S-4	7.21	1512	-0.049	0.011	0.005	0.009	0.000000	0.000000	2158.65	181.56
2	FID	ACIS-S-5	7.24	1512	0.049	-0.017	0.006	0.010	0.000000	0.000000	-1805.71	176.24
3	GUIDE	1198282824	7.30	3024	0.011	-0.074	0.059	0.101	18.044095	-73.907062	-1178.06	-1624.71
4	GUIDE	1198269920	8.25	3024	0.033	0.114	0.063	0.099	20.316466	-73.033728	1149.42	1517.97
5	GUIDE	1198264832	9.52	3021	0.075	0.150	0.103	0.170	20.353668	-72.974637	1193.54	1730.99
6	BAD	1198270632	10.27	2890	-0.235	-0.285	0.119	0.204	18.734673	-73.773529	-492.25	-1134.20
7	GUIDE	1198283072	10.43	3017	0.116	0.093	0.185	0.283	18.377128	-73.336207	-873.10	435.32

2.4 Star Slots

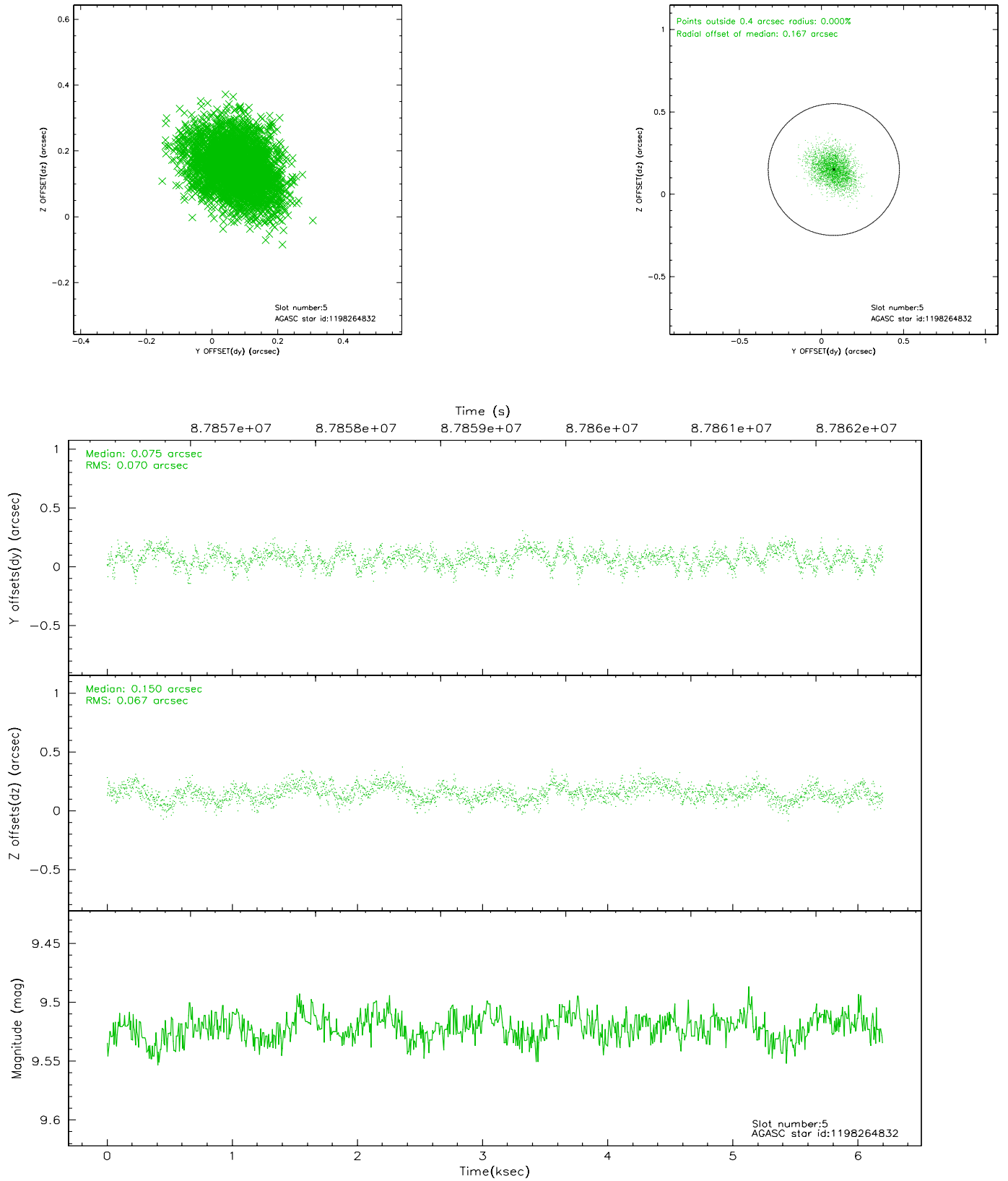
2.4.1 Slot 3



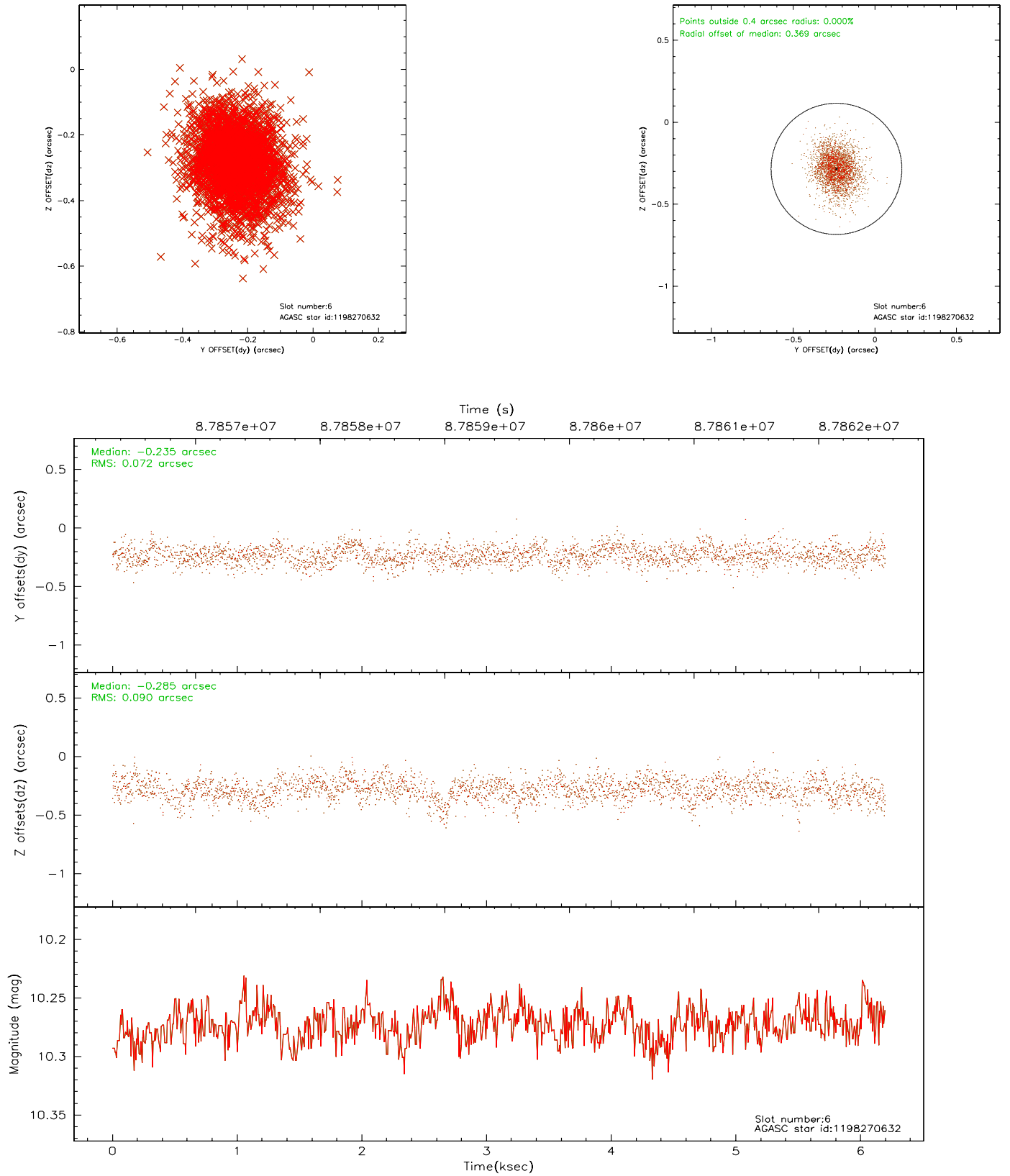
2.4.2 Slot 4



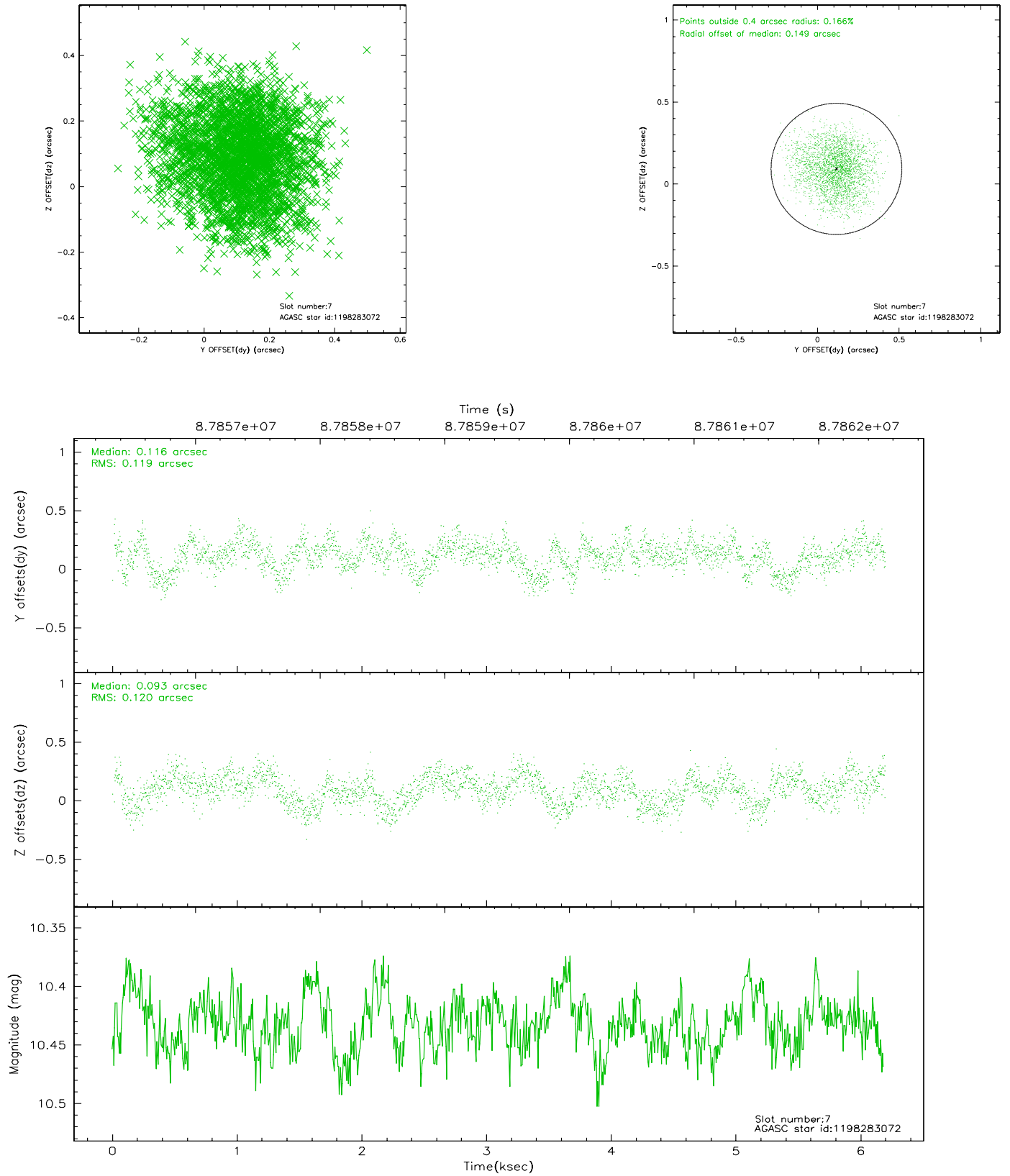
2.4.3 Slot 5



2.4.4 Slot 6

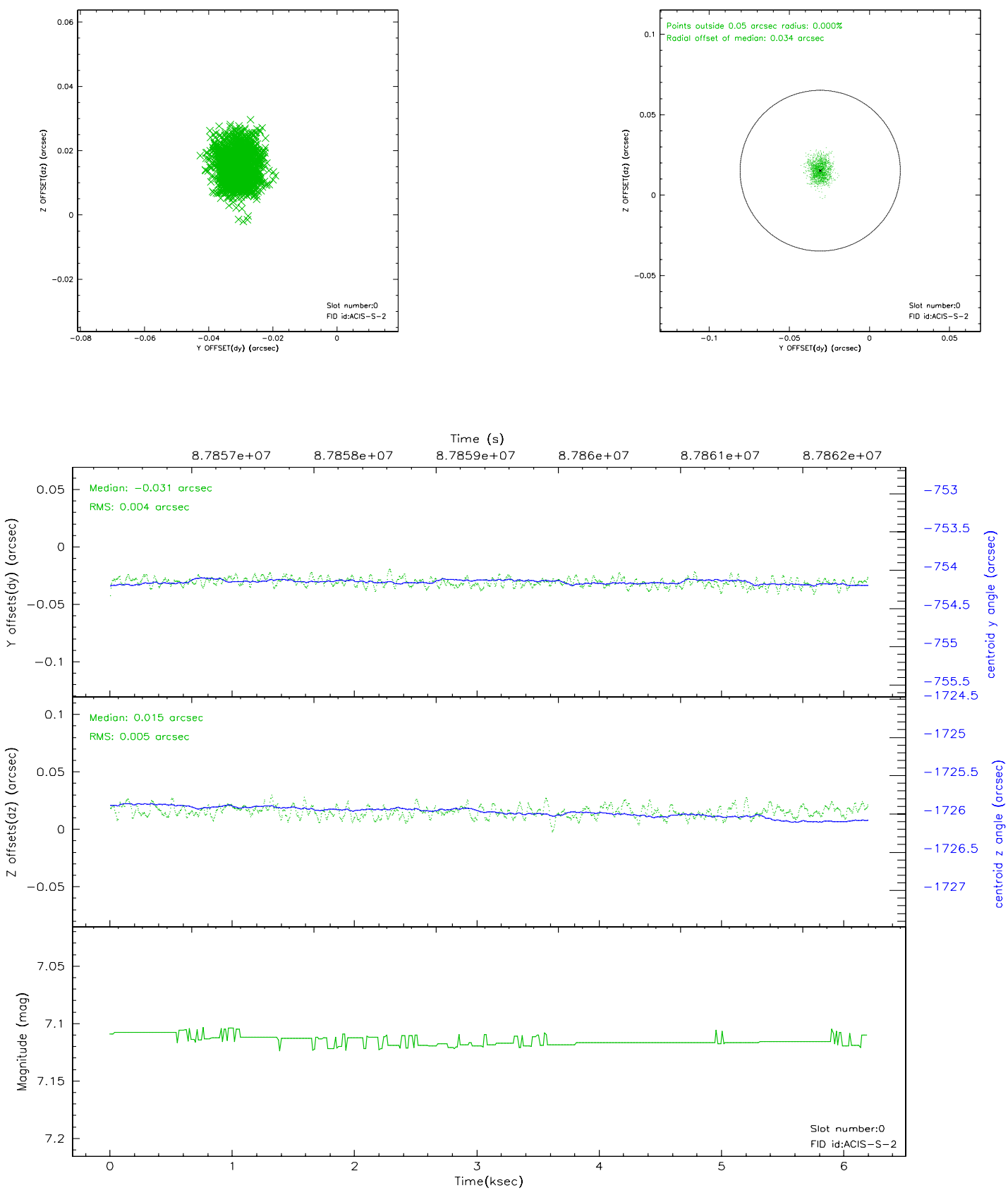


2.4.5 Slot 7

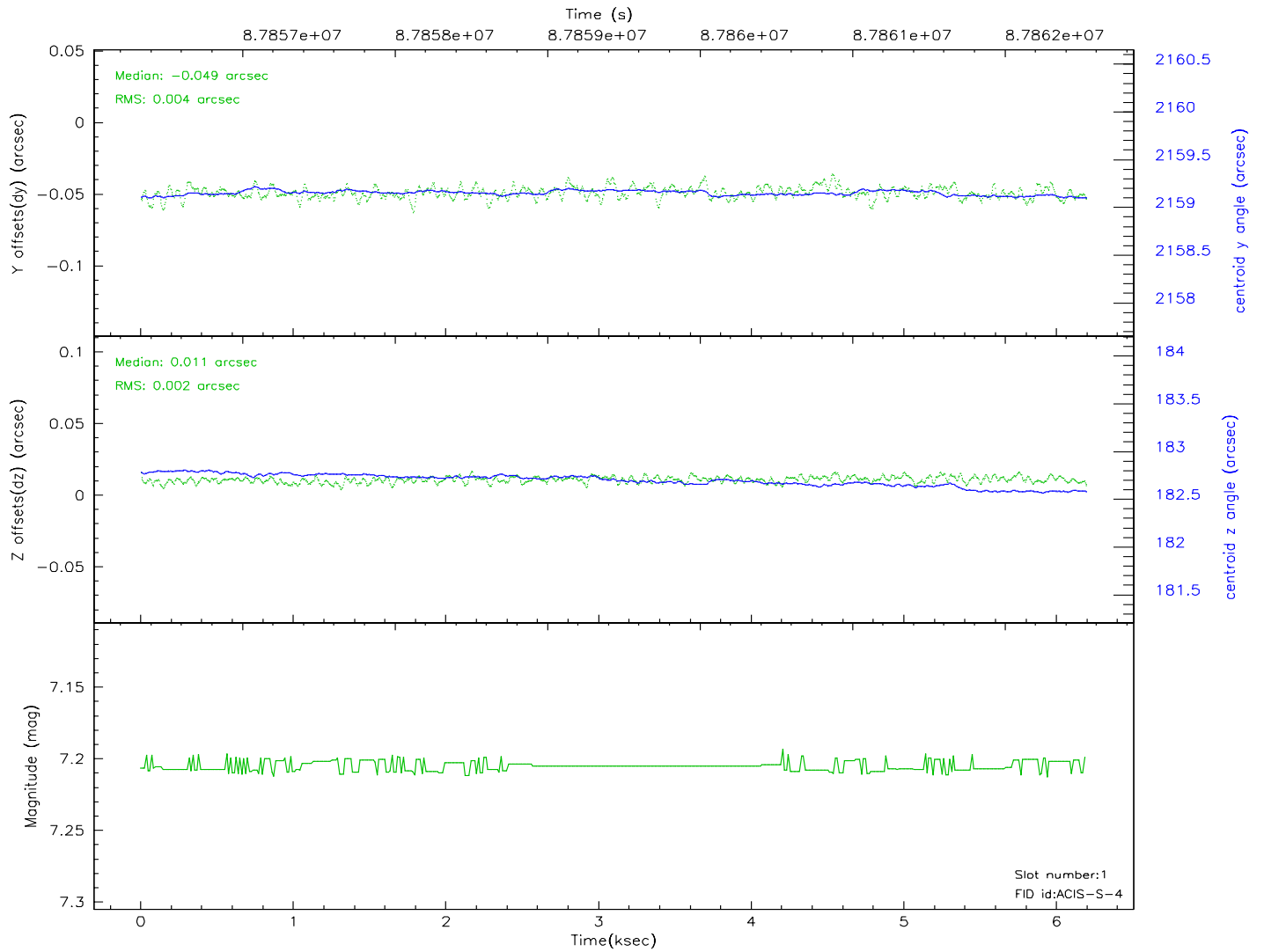
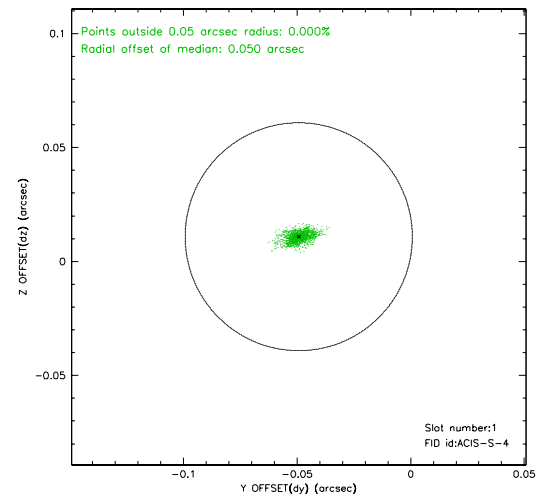
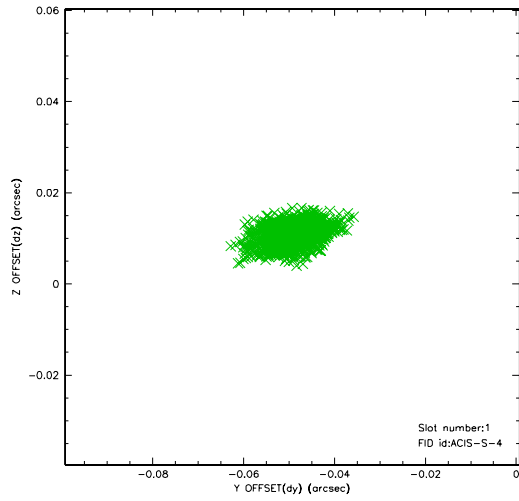


2.5 FID Slots

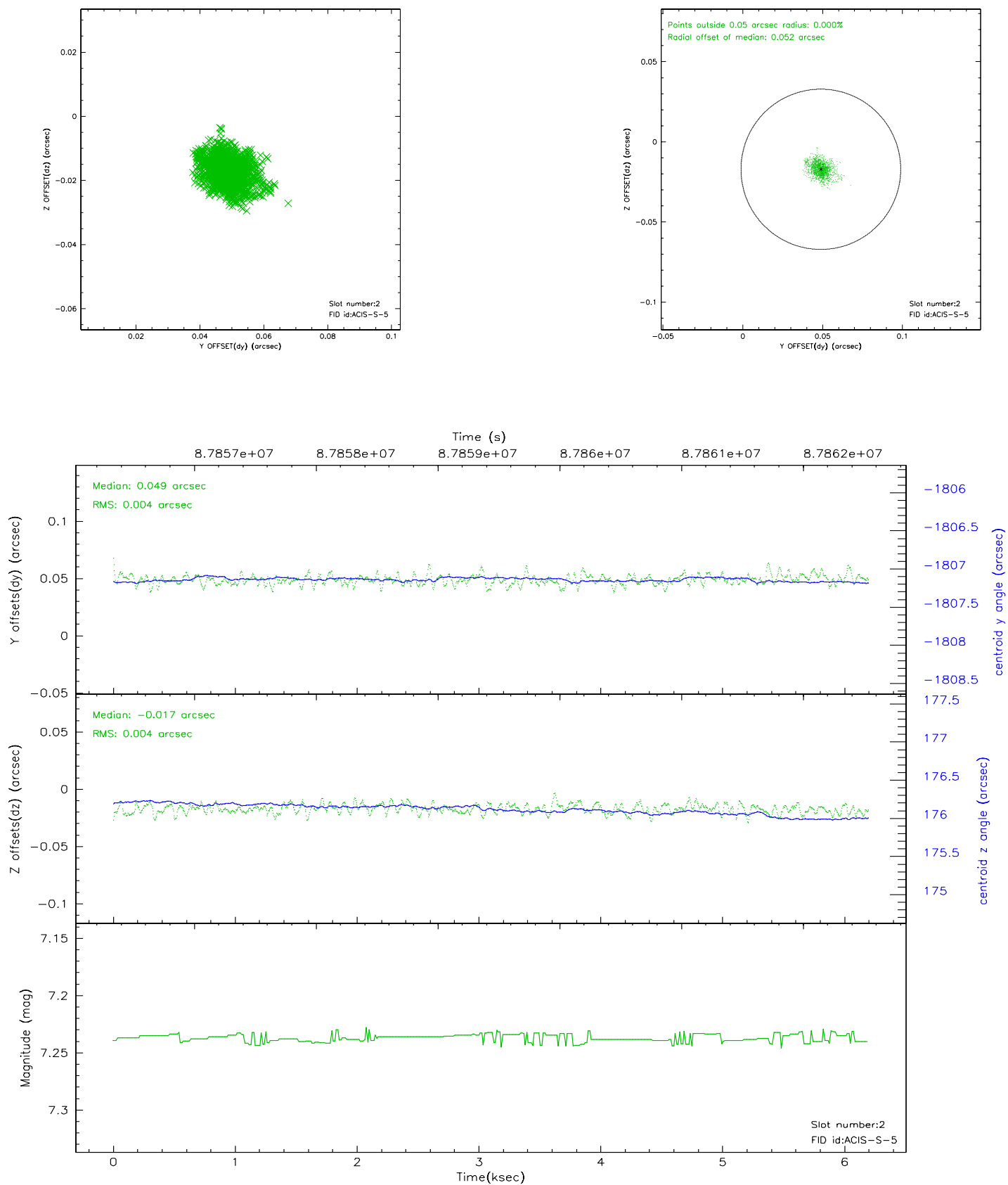
2.5.1 Slot 0



2.5.2 Slot 1



2.5.3 Slot 2



A Summary

A.1 Status

V&V Scientist	David Huenemoerder
V&V Date (YYYY-MM-DD)	2007.06.12
V&V Edition	1
V&V Disposition and Status	OK
V&V Charge Time	6.194

A.2 Comments